



# Full wwPDB X-ray Structure Validation Report ⓘ

Sep 3, 2023 – 05:32 PM EDT

PDB ID : 3T24  
Title : Crystal structure of Pseudomonas aeruginosa OpdQ  
Authors : van den Berg, B.; Eren, E.  
Deposited on : 2011-07-22  
Resolution : 2.40 Å(reported)

This is a Full wwPDB X-ray Structure Validation Report for a publicly released PDB entry.

We welcome your comments at [validation@mail.wwpdb.org](mailto:validation@mail.wwpdb.org)

A user guide is available at

<https://www.wwpdb.org/validation/2017/XrayValidationReportHelp>

with specific help available everywhere you see the ⓘ symbol.

The types of validation reports are described at

<http://www.wwpdb.org/validation/2017/FAQs#types>.

---

The following versions of software and data (see [references ⓘ](#)) were used in the production of this report:

MolProbity : 4.02b-467  
Mogul : 1.8.5 (274361), CSD as541be (2020)  
Xtriage (Phenix) : 1.13  
EDS : 2.35  
buster-report : 1.1.7 (2018)  
Percentile statistics : 20191225.v01 (using entries in the PDB archive December 25th 2019)  
Refmac : 5.8.0158  
CCP4 : 7.0.044 (Gargrove)  
Ideal geometry (proteins) : Engh & Huber (2001)  
Ideal geometry (DNA, RNA) : Parkinson et al. (1996)  
Validation Pipeline (wwPDB-VP) : 2.35

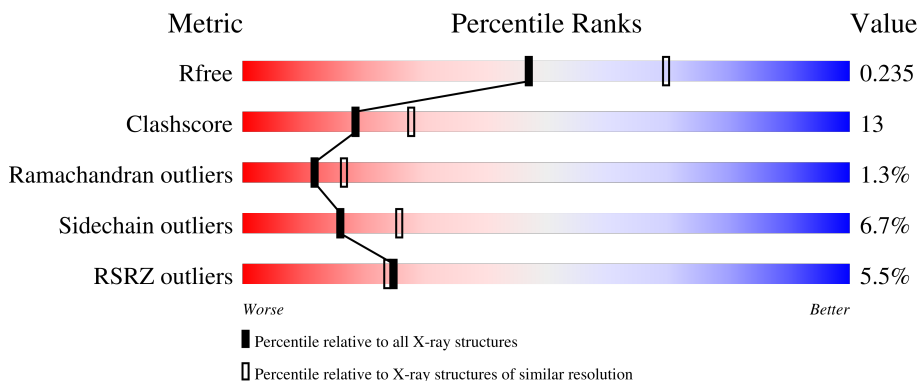
# 1 Overall quality at a glance

The following experimental techniques were used to determine the structure:

*X-RAY DIFFRACTION*

The reported resolution of this entry is 2.40 Å.

Percentile scores (ranging between 0-100) for global validation metrics of the entry are shown in the following graphic. The table shows the number of entries on which the scores are based.



Metric	Whole archive (#Entries)	Similar resolution (#Entries, resolution range(Å))
$R_{free}$	130704	3907 (2.40-2.40)
Clashscore	141614	4398 (2.40-2.40)
Ramachandran outliers	138981	4318 (2.40-2.40)
Sidechain outliers	138945	4319 (2.40-2.40)
RSRZ outliers	127900	3811 (2.40-2.40)

The table below summarises the geometric issues observed across the polymeric chains and their fit to the electron density. The red, orange, yellow and green segments of the lower bar indicate the fraction of residues that contain outliers for  $\geq 3$ , 2, 1 and 0 types of geometric quality criteria respectively. A grey segment represents the fraction of residues that are not modelled. The numeric value for each fraction is indicated below the corresponding segment, with a dot representing fractions  $\leq 5\%$ . The upper red bar (where present) indicates the fraction of residues that have poor fit to the electron density. The numeric value is given above the bar.

Mol	Chain	Length	Quality of chain
1	A	401	 71% 19% 6%
1	B	401	 66% 23% 8%
1	C	401	 70% 18% 8%

The following table lists non-polymeric compounds, carbohydrate monomers and non-standard residues in protein, DNA, RNA chains that are outliers for geometric or electron-density-fit criteria:

Mol	Type	Chain	Res	Chirality	Geometry	Clashes	Electron density
2	SO4	B	395	-	-	X	-
2	SO4	C	395	-	-	X	-
3	C8E	A	403	-	-	X	-

## 2 Entry composition [i](#)

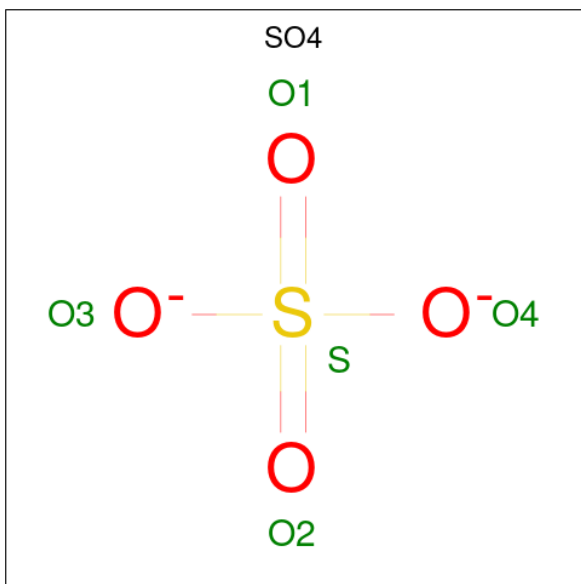
There are 4 unique types of molecules in this entry. The entry contains 9050 atoms, of which 0 are hydrogens and 0 are deuteriums.

In the tables below, the ZeroOcc column contains the number of atoms modelled with zero occupancy, the AltConf column contains the number of residues with at least one atom in alternate conformation and the Trace column contains the number of residues modelled with at most 2 atoms.

- Molecule 1 is a protein called porin.

Mol	Chain	Residues	Atoms					ZeroOcc	AltConf	Trace
			Total	C	N	O	S			
1	A	377	Total 2955	C 1869	N 501	O 577	S 8	0	0	0
1	B	368	Total 2846	C 1799	N 482	O 557	S 8	0	0	0
1	C	367	Total 2777	C 1745	N 474	O 550	S 8	0	0	0

- Molecule 2 is SULFATE ION (three-letter code: SO4) (formula: O<sub>4</sub>S).



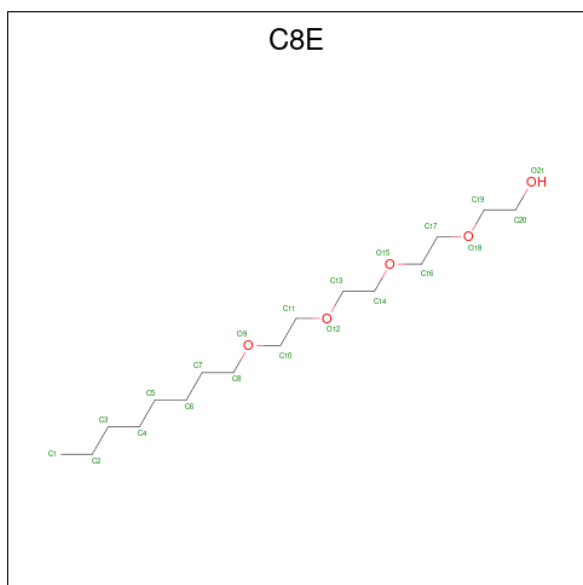
Mol	Chain	Residues	Atoms			ZeroOcc	AltConf
			Total	O	S		
2	A	1	Total 5	O 4	S 1	0	0
2	A	1	Total 5	O 4	S 1	0	0
2	A	1	Total 5	O 4	S 1	0	0

*Continued on next page...*

Continued from previous page...

Mol	Chain	Residues	Atoms			ZeroOcc	AltConf
2	A	1	Total	O	S	0	0
			5	4	1		
2	A	1	Total	O	S	0	0
			5	4	1		
2	A	1	Total	O	S	0	0
			5	4	1		
2	B	1	Total	O	S	0	0
			5	4	1		
2	B	1	Total	O	S	0	0
			5	4	1		
2	B	1	Total	O	S	0	0
			5	4	1		
2	C	1	Total	O	S	0	0
			5	4	1		
2	C	1	Total	O	S	0	0
			5	4	1		
2	C	1	Total	O	S	0	0
			5	4	1		

- Molecule 3 is (HYDROXYETHYLOXY)TRI(ETHYLOXY)OCTANE (three-letter code: C8E) (formula:  $C_{16}H_{34}O_5$ ).



Mol	Chain	Residues	Atoms			ZeroOcc	AltConf
3	A	1	Total	C	O	0	0
			18	14	4		
3	A	1	Total	C	O	0	0
			10	6	4		

Continued on next page...

*Continued from previous page...*

Mol	Chain	Residues	Atoms			ZeroOcc	AltConf
3	A	1	Total	C	O	0	0
			16	11	5		
3	A	1	Total	C	O	0	0
			12	10	2		
3	A	1	Total	C	O	0	0
			15	10	5		
3	B	1	Total	C	O	0	0
			19	14	5		
3	B	1	Total	C	O	0	0
			20	15	5		
3	B	1	Total	C	O	0	0
			10	6	4		
3	B	1	Total	C	O	0	0
			11	10	1		
3	B	1	Total	C	O	0	0
			18	14	4		
3	C	1	Total	C	O	0	0
			14	10	4		
3	C	1	Total	C	O	0	0
			11	9	2		

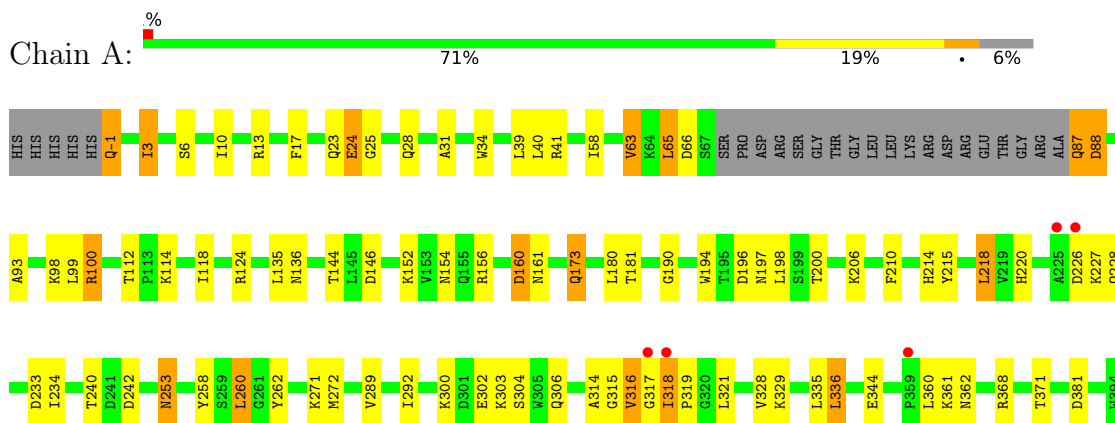
- Molecule 4 is water.

Mol	Chain	Residues	Atoms		ZeroOcc	AltConf
4	A	118	Total	O	0	0
			118	118		
4	B	82	Total	O	0	0
			82	82		
4	C	38	Total	O	0	0
			38	38		

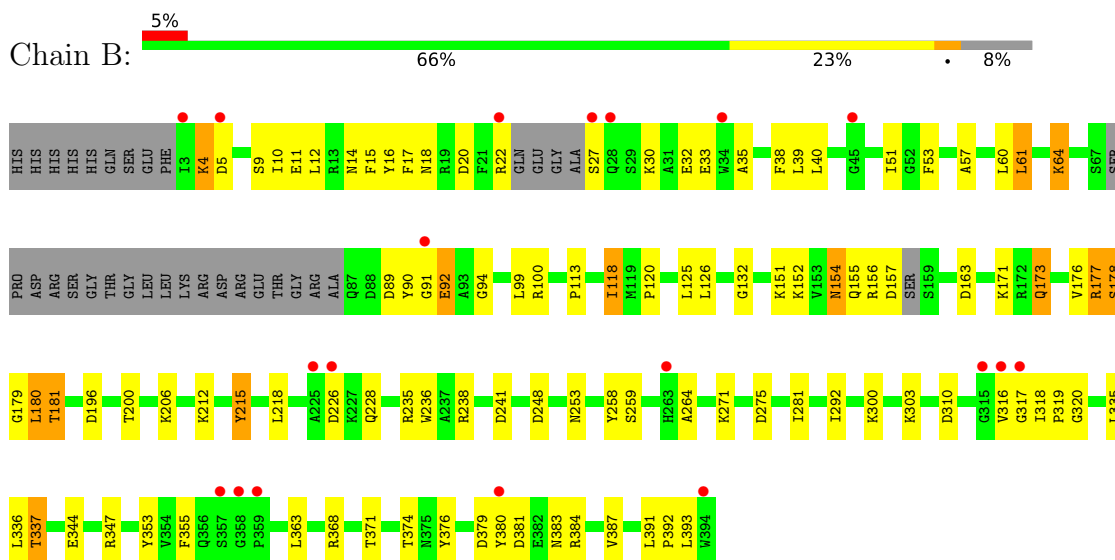
### 3 Residue-property plots [i](#)

These plots are drawn for all protein, RNA, DNA and oligosaccharide chains in the entry. The first graphic for a chain summarises the proportions of the various outlier classes displayed in the second graphic. The second graphic shows the sequence view annotated by issues in geometry and electron density. Residues are color-coded according to the number of geometric quality criteria for which they contain at least one outlier: green = 0, yellow = 1, orange = 2 and red = 3 or more. A red dot above a residue indicates a poor fit to the electron density ( $RSRZ > 2$ ). Stretches of 2 or more consecutive residues without any outlier are shown as a green connector. Residues present in the sample, but not in the model, are shown in grey.

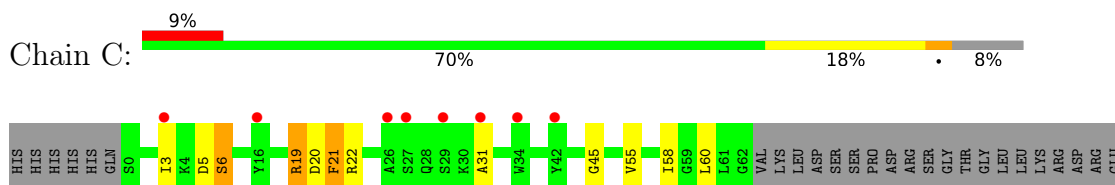
- Molecule 1: porin

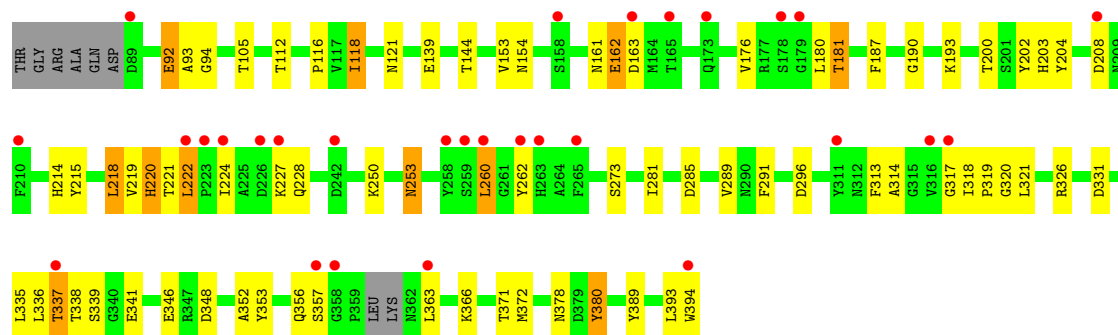


- Molecule 1: porin



- Molecule 1: porin







## 4 Data and refinement statistics

Property	Value	Source
Space group	P 1	Depositor
Cell constants a, b, c, $\alpha$ , $\beta$ , $\gamma$	64.72Å 78.46Å 97.52Å 77.76° 81.50° 70.04°	Depositor
Resolution (Å)	14.98 – 2.40 40.77 – 2.39	Depositor EDS
% Data completeness (in resolution range)	98.3 (14.98-2.40) 92.9 (40.77-2.39)	Depositor EDS
$R_{merge}$	(Not available)	Depositor
$R_{sym}$	0.08	Depositor
$\langle I/\sigma(I) \rangle$ <sup>1</sup>	2.05 (at 2.39Å)	Xtrriage
Refinement program	PHENIX (phenix.refine: 1.7.1_743)	Depositor
R, $R_{free}$	0.203 , 0.242 0.195 , 0.235	Depositor DCC
$R_{free}$ test set	2000 reflections (2.93%)	wwPDB-VP
Wilson B-factor (Å <sup>2</sup> )	42.1	Xtrriage
Anisotropy	0.204	Xtrriage
Bulk solvent $k_{sol}$ (e/Å <sup>3</sup> ), $B_{sol}$ (Å <sup>2</sup> )	0.33 , 61.5	EDS
L-test for twinning <sup>2</sup>	$\langle  L  \rangle = 0.50$ , $\langle L^2 \rangle = 0.33$	Xtrriage
Estimated twinning fraction	No twinning to report.	Xtrriage
$F_o, F_c$ correlation	0.94	EDS
Total number of atoms	9050	wwPDB-VP
Average B, all atoms (Å <sup>2</sup> )	56.0	wwPDB-VP

Xtrriage's analysis on translational NCS is as follows: *The largest off-origin peak in the Patterson function is 5.03% of the height of the origin peak. No significant pseudotranslation is detected.*

<sup>1</sup>Intensities estimated from amplitudes.

<sup>2</sup>Theoretical values of  $\langle |L| \rangle$ ,  $\langle L^2 \rangle$  for acentric reflections are 0.5, 0.333 respectively for untwinned datasets, and 0.375, 0.2 for perfectly twinned datasets.

## 5 Model quality [i](#)

### 5.1 Standard geometry [i](#)

Bond lengths and bond angles in the following residue types are not validated in this section: C8E, SO4

The Z score for a bond length (or angle) is the number of standard deviations the observed value is removed from the expected value. A bond length (or angle) with  $|Z| > 5$  is considered an outlier worth inspection. RMSZ is the root-mean-square of all Z scores of the bond lengths (or angles).

Mol	Chain	Bond lengths		Bond angles	
		RMSZ	# Z  >5	RMSZ	# Z  >5
1	A	0.47	0/3019	0.60	0/4080
1	B	0.43	0/2906	0.58	1/3927 (0.0%)
1	C	0.35	0/2836	0.50	0/3837
All	All	0.42	0/8761	0.56	1/11844 (0.0%)

There are no bond length outliers.

All (1) bond angle outliers are listed below:

Mol	Chain	Res	Type	Atoms	Z	Observed( $^{\circ}$ )	Ideal( $^{\circ}$ )
1	B	180	LEU	CA-CB-CG	5.20	127.27	115.30

There are no chirality outliers.

There are no planarity outliers.

### 5.2 Too-close contacts [i](#)

In the following table, the Non-H and H(model) columns list the number of non-hydrogen atoms and hydrogen atoms in the chain respectively. The H(added) column lists the number of hydrogen atoms added and optimized by MolProbity. The Clashes column lists the number of clashes within the asymmetric unit, whereas Symm-Clashes lists symmetry-related clashes.

Mol	Chain	Non-H	H(model)	H(added)	Clashes	Symm-Clashes
1	A	2955	0	2813	86	0
1	B	2846	0	2665	75	0
1	C	2777	0	2534	63	0
2	A	30	0	0	2	0
2	B	15	0	0	2	0
2	C	15	0	0	2	0
3	A	71	0	103	10	0

*Continued on next page...*

Continued from previous page...

Mol	Chain	Non-H	H(model)	H(added)	Clashes	Symm-Clashes
3	B	78	0	112	6	0
3	C	25	0	30	4	0
4	A	118	0	0	6	0
4	B	82	0	0	3	0
4	C	38	0	0	2	0
All	All	9050	0	8257	226	0

The all-atom clashscore is defined as the number of clashes found per 1000 atoms (including hydrogen atoms). The all-atom clashscore for this structure is 13.

All (226) close contacts within the same asymmetric unit are listed below, sorted by their clash magnitude.

Atom-1	Atom-2	Interatomic distance (Å)	Clash overlap (Å)
1:C:22:ARG:NH1	2:C:395:SO4:O1	1.94	1.00
1:A:100:ARG:HG2	1:A:100:ARG:HH11	1.34	0.92
1:A:-1:GLN:O	1:A:3:ILE:HG22	1.76	0.84
1:A:24:GLU:HG2	1:A:25:GLY:H	1.44	0.83
1:B:228:GLN:OE1	1:B:258:TYR:OH	1.96	0.82
1:B:374:THR:OG1	4:B:436:HOH:O	1.99	0.79
1:B:163:ASP:HB3	1:B:181:THR:HG23	1.64	0.79
1:A:173:GLN:HB2	1:A:336:LEU:HD21	1.65	0.78
1:A:368:ARG:NH1	4:A:482:HOH:O	2.16	0.77
1:C:220:HIS:CE1	1:C:222:LEU:HD22	2.20	0.76
1:A:100:ARG:NH1	4:A:443:HOH:O	2.20	0.74
1:C:363:LEU:HD12	1:C:389:TYR:HB2	1.67	0.73
1:A:24:GLU:CG	1:A:25:GLY:H	2.01	0.73
2:A:399:SO4:O3	4:A:520:HOH:O	2.08	0.72
1:A:220:HIS:HE1	3:A:403:C8E:H191	1.55	0.71
1:A:100:ARG:HH11	1:A:100:ARG:CG	2.02	0.70
1:A:316:VAL:HG23	1:A:317:GLY:N	2.05	0.70
1:A:306:GLN:HB2	1:A:328:VAL:HG22	1.73	0.70
1:A:87:GLN:O	1:A:88:ASP:HB2	1.91	0.70
1:A:41:ARG:HG2	1:A:58:ILE:CD1	2.22	0.69
1:C:92:GLU:HG3	1:C:93:ALA:H	1.58	0.69
1:A:253:ASN:HB2	1:A:289:VAL:HG22	1.74	0.69
2:A:398:SO4:O1	4:A:454:HOH:O	2.08	0.68
1:A:112:THR:HG23	1:A:112:THR:O	1.92	0.68
1:B:376:TYR:N	4:B:436:HOH:O	2.26	0.68
1:B:200:THR:HB	3:B:398:C8E:H61	1.76	0.68
1:A:173:GLN:HG2	1:A:300:LYS:HD2	1.77	0.67
1:A:98:LYS:C	1:A:99:LEU:HD12	2.15	0.67

Continued on next page...

*Continued from previous page...*

Atom-1	Atom-2	Interatomic distance (Å)	Clash overlap (Å)
1:A:63:VAL:HA	1:A:88:ASP:O	1.96	0.66
1:A:160:ASP:OD1	1:A:160:ASP:N	2.27	0.66
1:B:200:THR:OG1	3:B:398:C8E:H81	1.97	0.65
1:C:363:LEU:CD1	1:C:389:TYR:HB2	2.27	0.64
1:A:100:ARG:HG2	1:A:100:ARG:NH1	2.07	0.64
1:A:10:ILE:HD13	1:A:40:LEU:HG	1.78	0.64
1:C:92:GLU:HG3	1:C:93:ALA:N	2.13	0.63
1:B:371:THR:HG23	1:B:381:ASP:OD2	1.99	0.63
1:B:53:PHE:CE1	1:B:99:LEU:HD13	2.35	0.62
3:A:404:C8E:H42	3:A:404:C8E:H81	1.82	0.62
1:B:173:GLN:O	1:B:173:GLN:HG3	1.99	0.62
1:B:20:ASP:O	1:B:380:TYR:HB2	2.00	0.61
1:C:116:PRO:HG2	1:C:203:HIS:CD2	2.35	0.61
1:A:13:ARG:NH1	1:A:124:ARG:O	2.32	0.61
1:A:23:GLN:O	1:A:24:GLU:HB3	2.00	0.60
1:B:335:LEU:O	1:B:337:THR:N	2.33	0.60
1:B:90:TYR:CE1	1:B:126:LEU:HD12	2.36	0.60
1:A:318:ILE:HG22	1:A:321:LEU:HB3	1.82	0.60
1:B:17:PHE:HD1	1:B:384:ARG:HG2	1.66	0.60
1:C:22:ARG:NH1	2:C:395:SO4:S	2.75	0.60
1:B:215:TYR:HE2	1:B:235:ARG:HB3	1.68	0.59
1:A:173:GLN:O	1:A:173:GLN:HG3	2.03	0.59
1:C:319:PRO:HB2	1:C:356:GLN:OE1	2.03	0.59
1:A:316:VAL:HG23	1:A:317:GLY:H	1.67	0.58
1:B:35:ALA:HB1	1:B:125:LEU:HD22	1.85	0.58
1:B:156:ARG:O	4:B:485:HOH:O	2.17	0.58
1:C:227:LYS:O	1:C:260:LEU:HA	2.03	0.58
1:A:318:ILE:HG22	1:A:321:LEU:CB	2.34	0.58
1:B:51:ILE:CG2	1:B:99:LEU:HD11	2.34	0.58
1:B:379:ASP:O	1:B:380:TYR:HB3	2.03	0.58
1:A:198:LEU:HD23	3:A:403:C8E:H132	1.85	0.57
1:C:260:LEU:HD13	1:C:260:LEU:O	2.04	0.57
1:C:224:ILE:HD11	1:C:228:GLN:HG2	1.85	0.57
1:B:10:ILE:HG12	1:B:393:LEU:HD21	1.85	0.57
1:C:163:ASP:HB3	1:C:181:THR:HG23	1.85	0.57
1:A:197:ASN:HB2	3:A:403:C8E:H202	1.87	0.57
1:C:336:LEU:O	1:C:337:THR:CB	2.53	0.57
1:A:23:GLN:OE1	1:A:28:GLN:HG2	2.05	0.57
1:A:24:GLU:CG	1:A:25:GLY:N	2.67	0.57
1:B:173:GLN:HG2	1:B:300:LYS:HD2	1.86	0.57
1:B:218:LEU:C	1:B:218:LEU:HD23	2.26	0.57

*Continued on next page...*

*Continued from previous page...*

Atom-1	Atom-2	Interatomic distance (Å)	Clash overlap (Å)
1:A:24:GLU:HG2	1:A:25:GLY:N	2.17	0.56
1:A:41:ARG:HG2	1:A:58:ILE:HD11	1.87	0.56
1:C:317:GLY:C	1:C:319:PRO:HD3	2.26	0.56
1:C:154:ASN:HB2	1:C:161:ASN:OD1	2.06	0.55
1:B:178:SER:OG	2:B:395:SO4:O3	2.24	0.55
1:C:19:ARG:HB2	1:C:31:ALA:HB3	1.89	0.55
1:A:271:LYS:HD3	1:A:303:LYS:CG	2.36	0.55
1:C:112:THR:O	1:C:112:THR:HG23	2.07	0.54
1:C:202:TYR:OH	1:C:214:HIS:ND1	2.40	0.54
1:C:393:LEU:O	1:C:394:TRP:HB3	2.07	0.54
1:A:258:TYR:HE2	1:A:260:LEU:HD23	1.72	0.54
1:A:41:ARG:HG2	1:A:58:ILE:HD12	1.88	0.54
1:B:344:GLU:HB3	1:B:374:THR:HG22	1.89	0.54
1:C:331:ASP:HB2	1:C:341:GLU:OE1	2.08	0.54
1:A:99:LEU:HD12	1:A:99:LEU:N	2.24	0.53
1:A:335:LEU:O	1:A:336:LEU:HB2	2.08	0.53
1:A:24:GLU:OE2	1:A:25:GLY:N	2.42	0.53
1:A:262:TYR:CE2	1:A:315:GLY:HA2	2.44	0.52
1:A:31:ALA:HB2	1:B:179:GLY:HA3	1.90	0.52
1:B:163:ASP:CB	1:B:181:THR:HG23	2.38	0.52
1:B:57:ALA:HA	1:B:94:GLY:O	2.09	0.52
1:B:271:LYS:HE2	1:B:303:LYS:HE2	1.90	0.52
1:B:18:ASN:OD1	1:B:383:ASN:HB2	2.09	0.52
1:B:132:GLY:HA2	3:B:401:C8E:H102	1.92	0.52
1:C:253:ASN:HB2	1:C:289:VAL:HG22	1.92	0.52
1:A:124:ARG:HG2	1:A:156:ARG:NH1	2.24	0.52
1:C:262:TYR:CE1	1:C:314:ALA:HB3	2.45	0.52
1:B:27:SER:OG	1:B:30:LYS:HE3	2.10	0.52
1:B:61:LEU:HD11	3:B:400:C8E:H171	1.91	0.52
1:A:124:ARG:HG3	1:A:156:ARG:HD2	1.92	0.51
1:A:39:LEU:N	1:A:39:LEU:HD12	2.26	0.51
1:A:124:ARG:CG	1:A:156:ARG:HD2	2.41	0.51
1:A:173:GLN:CB	1:A:336:LEU:HD21	2.39	0.51
1:A:214:HIS:HD2	4:A:516:HOH:O	1.93	0.51
1:C:21:PHE:CD1	1:C:378:ASN:HB3	2.46	0.51
1:B:91:GLY:O	1:B:92:GLU:HB2	2.10	0.51
1:B:173:GLN:O	1:B:173:GLN:CG	2.59	0.51
1:C:326:ARG:HG2	1:C:348:ASP:HB2	1.93	0.51
1:A:228:GLN:OE1	1:A:258:TYR:OH	2.26	0.51
1:B:200:THR:CB	3:B:398:C8E:H61	2.41	0.50
1:B:316:VAL:HG23	1:B:318:ILE:HD12	1.93	0.50

*Continued on next page...*

*Continued from previous page...*

Atom-1	Atom-2	Interatomic distance (Å)	Clash overlap (Å)
1:C:60:LEU:N	1:C:92:GLU:O	2.36	0.50
1:A:318:ILE:H	1:A:319:PRO:HD3	1.75	0.50
1:C:250:LYS:HB2	1:C:273:SER:HB2	1.93	0.50
1:B:10:ILE:HB	1:B:391:LEU:HD21	1.94	0.50
1:C:21:PHE:CE1	1:C:378:ASN:HB3	2.47	0.49
1:C:228:GLN:HG3	1:C:260:LEU:HB3	1.93	0.49
1:B:39:LEU:HG	1:B:60:LEU:HD22	1.94	0.49
1:C:200:THR:CB	3:C:399:C8E:H132	2.43	0.49
1:A:258:TYR:CE2	1:A:260:LEU:HD23	2.47	0.49
1:C:139:GLU:HB3	3:C:398:C8E:H132	1.94	0.48
1:B:16:TYR:OH	1:B:32:GLU:OE2	2.31	0.48
1:C:338:THR:HG22	1:C:339:SER:N	2.28	0.48
1:B:10:ILE:HD11	1:B:40:LEU:HD13	1.96	0.48
1:B:320:GLY:O	1:B:353:TYR:HA	2.14	0.48
1:C:20:ASP:O	1:C:380:TYR:HA	2.13	0.47
1:C:200:THR:HB	3:C:399:C8E:H132	1.96	0.47
1:A:194:TRP:CZ2	3:A:403:C8E:H81	2.49	0.47
1:A:262:TYR:CD2	1:A:315:GLY:HA2	2.49	0.47
1:A:112:THR:O	1:A:112:THR:CG2	2.63	0.47
1:A:173:GLN:O	1:A:173:GLN:CG	2.63	0.47
1:A:220:HIS:CE1	3:A:403:C8E:H191	2.44	0.47
1:B:61:LEU:CD1	3:B:400:C8E:H171	2.45	0.47
1:A:314:ALA:C	1:A:316:VAL:N	2.68	0.46
1:B:33:GLU:OE2	1:B:64:LYS:HD3	2.14	0.46
1:C:200:THR:OG1	3:C:399:C8E:H132	2.16	0.46
1:A:135:LEU:O	1:A:146:ASP:HA	2.15	0.46
1:C:262:TYR:HE1	1:C:314:ALA:HB3	1.80	0.46
1:B:22:ARG:HD2	1:B:381:ASP:OD1	2.16	0.46
1:B:264:ALA:HB3	1:B:310:ASP:HB2	1.97	0.46
1:B:14:ASN:HB2	1:B:387:VAL:HB	1.97	0.46
1:C:356:GLN:O	1:C:357:SER:HB3	2.16	0.46
1:B:39:LEU:HD12	1:B:39:LEU:N	2.31	0.45
1:B:60:LEU:HB3	1:B:126:LEU:HD22	1.97	0.45
1:C:181:THR:O	4:C:430:HOH:O	2.21	0.45
1:B:9:SER:O	1:B:10:ILE:HD13	2.17	0.45
1:C:346:GLU:HA	1:C:371:THR:O	2.16	0.45
1:A:234:ILE:HD12	1:A:234:ILE:N	2.31	0.45
1:B:53:PHE:CD1	1:B:99:LEU:HD13	2.52	0.45
1:B:317:GLY:C	1:B:319:PRO:HD3	2.37	0.45
1:A:87:GLN:O	1:A:88:ASP:CB	2.59	0.45
1:A:314:ALA:C	1:A:316:VAL:H	2.19	0.45

*Continued on next page...*

*Continued from previous page...*

Atom-1	Atom-2	Interatomic distance (Å)	Clash overlap (Å)
1:C:176:VAL:CG1	1:C:180:LEU:HB3	2.47	0.45
1:A:371:THR:HG23	1:A:381:ASP:OD2	2.17	0.45
1:B:236:TRP:CH2	1:B:238:ARG:HB2	2.51	0.45
1:B:368:ARG:HB2	1:B:384:ARG:HB2	1.99	0.45
1:C:218:LEU:HD12	1:C:218:LEU:C	2.37	0.45
1:C:313:PHE:HD2	1:C:321:LEU:O	1.99	0.45
1:A:31:ALA:HB2	1:B:179:GLY:CA	2.48	0.44
1:A:206:LYS:HE3	1:A:242:ASP:OD2	2.17	0.44
1:B:15:PHE:CZ	1:B:17:PHE:HB2	2.52	0.44
1:A:58:ILE:O	1:A:93:ALA:HA	2.18	0.44
1:C:218:LEU:HD12	1:C:219:VAL:N	2.33	0.44
1:A:304:SER:HA	1:A:329:LYS:O	2.18	0.44
1:A:154:ASN:HB2	1:A:161:ASN:OD1	2.18	0.44
1:C:58:ILE:O	1:C:94:GLY:N	2.47	0.44
1:A:200:THR:HG22	1:A:218:LEU:HD22	1.99	0.44
1:B:113:PRO:O	1:B:120:PRO:CD	2.65	0.44
1:B:177:ARG:NH1	2:B:395:SO4:O1	2.51	0.44
1:B:206:LYS:CD	1:B:212:LYS:HG2	2.47	0.44
1:C:187:PHE:HA	1:C:204:TYR:O	2.17	0.44
1:A:23:GLN:HB3	1:A:28:GLN:OE1	2.18	0.43
1:A:34:TRP:CE2	1:A:65:LEU:HD23	2.53	0.43
1:B:228:GLN:HA	1:B:259:SER:O	2.18	0.43
1:C:352:ALA:HB2	1:C:366:LYS:HE3	2.00	0.43
1:A:124:ARG:HB3	4:A:511:HOH:O	2.17	0.43
1:C:144:THR:O	1:C:190:GLY:HA2	2.18	0.43
1:C:319:PRO:HB2	1:C:356:GLN:CD	2.39	0.43
1:A:198:LEU:CD2	3:A:403:C8E:H132	2.47	0.43
1:A:262:TYR:CD2	1:A:315:GLY:CA	3.02	0.43
1:C:321:LEU:HB2	1:C:353:TYR:CD1	2.54	0.43
1:C:320:GLY:O	1:C:353:TYR:HA	2.19	0.43
1:A:226:ASP:HA	1:A:227:LYS:HA	1.43	0.43
1:B:155:GLN:OE1	1:B:155:GLN:HA	2.18	0.43
1:C:3:ILE:O	1:C:6:SER:HB2	2.19	0.43
1:C:220:HIS:HD2	4:C:412:HOH:O	2.01	0.43
1:C:193:LYS:HB3	1:C:193:LYS:HE2	1.67	0.43
1:A:197:ASN:CB	3:A:403:C8E:H202	2.48	0.42
1:A:233:ASP:C	1:A:234:ILE:HD12	2.40	0.42
1:B:4:LYS:HA	1:B:5:ASP:C	2.40	0.42
1:C:121:ASN:ND2	1:C:285:ASP:OD1	2.52	0.42
1:C:378:ASN:HB2	1:C:380:TYR:CZ	2.54	0.42
1:A:65:LEU:O	1:A:66:ASP:HB3	2.19	0.42

*Continued on next page...*

*Continued from previous page...*

Atom-1	Atom-2	Interatomic distance (Å)	Clash overlap (Å)
1:A:318:ILE:N	1:A:319:PRO:HD3	2.33	0.42
1:C:118:ILE:HD13	1:C:281:ILE:HD12	2.01	0.42
1:B:355:PHE:CD2	1:B:363:LEU:HD23	2.55	0.42
1:B:391:LEU:HA	1:B:392:PRO:HD3	1.90	0.42
1:B:163:ASP:CB	1:B:181:THR:CG2	2.98	0.42
3:A:403:C8E:H142	3:A:403:C8E:H171	1.53	0.42
1:A:361:LYS:O	1:A:362:ASN:HB2	2.20	0.42
1:B:11:GLU:HB3	1:B:39:LEU:HB2	2.01	0.41
1:B:17:PHE:CD1	1:B:384:ARG:HG2	2.52	0.41
1:B:176:VAL:HG12	1:B:177:ARG:N	2.34	0.41
1:A:144:THR:O	1:A:190:GLY:HA2	2.21	0.41
1:B:10:ILE:HB	1:B:391:LEU:CD2	2.50	0.41
1:C:346:GLU:HG3	1:C:371:THR:O	2.20	0.41
1:A:318:ILE:HG22	1:A:318:ILE:O	2.20	0.41
1:B:173:GLN:HG2	1:B:275:ASP:O	2.20	0.41
1:B:173:GLN:CG	1:B:275:ASP:O	2.69	0.41
1:A:152:LYS:HB3	1:A:161:ASN:HB3	2.02	0.41
1:B:118:ILE:HD13	1:B:281:ILE:HD12	2.02	0.41
1:C:5:ASP:HB2	1:C:45:GLY:HA3	2.02	0.41
1:C:21:PHE:CD1	1:C:21:PHE:C	2.93	0.41
1:C:153:VAL:O	1:C:162:GLU:HG3	2.21	0.41
1:A:220:HIS:HE1	3:A:403:C8E:C19	2.27	0.41
1:B:38:PHE:C	1:B:39:LEU:HD12	2.41	0.41
1:B:154:ASN:OD1	1:B:154:ASN:O	2.39	0.41
1:A:180:LEU:HD23	1:A:210:PHE:CZ	2.56	0.41
1:A:271:LYS:HD2	1:A:272:MET:O	2.20	0.41
1:B:171:LYS:HA	1:B:171:LYS:HD3	1.88	0.40
1:C:92:GLU:CG	1:C:93:ALA:N	2.82	0.40
1:C:291:PHE:HA	1:C:296:ASP:HA	2.02	0.40
1:C:318:ILE:N	1:C:319:PRO:HD3	2.36	0.40
1:A:136:ASN:C	1:A:136:ASN:OD1	2.60	0.40
1:A:302:GLU:OE2	1:A:344:GLU:OE2	2.40	0.40
1:B:61:LEU:HD12	1:B:61:LEU:HA	1.90	0.40
1:B:151:LYS:O	1:B:152:LYS:HG2	2.20	0.40

There are no symmetry-related clashes.



## 5.3 Torsion angles [i](#)

### 5.3.1 Protein backbone [i](#)

In the following table, the Percentiles column shows the percent Ramachandran outliers of the chain as a percentile score with respect to all X-ray entries followed by that with respect to entries of similar resolution.

The Analysed column shows the number of residues for which the backbone conformation was analysed, and the total number of residues.

Mol	Chain	Analysed	Favoured	Allowed	Outliers	Percentiles	
1	A	373/401 (93%)	351 (94%)	17 (5%)	5 (1%)	12	17
1	B	360/401 (90%)	335 (93%)	18 (5%)	7 (2%)	8	10
1	C	361/401 (90%)	343 (95%)	16 (4%)	2 (1%)	25	36
All	All	1094/1203 (91%)	1029 (94%)	51 (5%)	14 (1%)	12	17

All (14) Ramachandran outliers are listed below:

Mol	Chain	Res	Type
1	A	318	ILE
1	B	226	ASP
1	A	88	ASP
1	B	4	LYS
1	B	92	GLU
1	B	336	LEU
1	B	337	THR
1	C	337	THR
1	A	316	VAL
1	A	118	ILE
1	B	118	ILE
1	C	118	ILE
1	A	292	ILE
1	B	292	ILE

### 5.3.2 Protein sidechains [i](#)

In the following table, the Percentiles column shows the percent sidechain outliers of the chain as a percentile score with respect to all X-ray entries followed by that with respect to entries of similar resolution.

The Analysed column shows the number of residues for which the sidechain conformation was analysed, and the total number of residues.

Mol	Chain	Analysed	Rotameric	Outliers	Percentiles	
1	A	305/335 (91%)	284 (93%)	21 (7%)	15	25
1	B	287/335 (86%)	269 (94%)	18 (6%)	18	28
1	C	271/335 (81%)	252 (93%)	19 (7%)	15	24
All	All	863/1005 (86%)	805 (93%)	58 (7%)	16	26

All (58) residues with a non-rotameric sidechain are listed below:

Mol	Chain	Res	Type
1	A	-1	GLN
1	A	3	ILE
1	A	6	SER
1	A	17	PHE
1	A	24	GLU
1	A	63	VAL
1	A	65	LEU
1	A	87	GLN
1	A	100	ARG
1	A	114	LYS
1	A	160	ASP
1	A	173	GLN
1	A	181	THR
1	A	196	ASP
1	A	215	TYR
1	A	218	LEU
1	A	240	THR
1	A	253	ASN
1	A	260	LEU
1	A	336	LEU
1	A	360	LEU
1	B	12	LEU
1	B	61	LEU
1	B	64	LYS
1	B	89	ASP
1	B	100	ARG
1	B	154	ASN
1	B	157	ASP
1	B	173	GLN
1	B	177	ARG
1	B	178	SER
1	B	180	LEU
1	B	181	THR
1	B	196	ASP

*Continued on next page...*

*Continued from previous page...*

Mol	Chain	Res	Type
1	B	215	TYR
1	B	241	ASP
1	B	248	ASP
1	B	253	ASN
1	B	347	ARG
1	C	6	SER
1	C	19	ARG
1	C	21	PHE
1	C	55	VAL
1	C	92	GLU
1	C	105	THR
1	C	162	GLU
1	C	181	THR
1	C	208	ASP
1	C	215	TYR
1	C	218	LEU
1	C	220	HIS
1	C	221	THR
1	C	222	LEU
1	C	253	ASN
1	C	260	LEU
1	C	335	LEU
1	C	372	MET
1	C	380	TYR

Sometimes sidechains can be flipped to improve hydrogen bonding and reduce clashes. All (2) such sidechains are listed below:

Mol	Chain	Res	Type
1	A	220	HIS
1	A	378	ASN

### 5.3.3 RNA [i](#)

There are no RNA molecules in this entry.

## 5.4 Non-standard residues in protein, DNA, RNA chains [i](#)

There are no non-standard protein/DNA/RNA residues in this entry.

## 5.5 Carbohydrates [i](#)

There are no monosaccharides in this entry.

## 5.6 Ligand geometry [i](#)

24 ligands are modelled in this entry.

In the following table, the Counts columns list the number of bonds (or angles) for which Mogul statistics could be retrieved, the number of bonds (or angles) that are observed in the model and the number of bonds (or angles) that are defined in the Chemical Component Dictionary. The Link column lists molecule types, if any, to which the group is linked. The Z score for a bond length (or angle) is the number of standard deviations the observed value is removed from the expected value. A bond length (or angle) with  $|Z| > 2$  is considered an outlier worth inspection. RMSZ is the root-mean-square of all Z scores of the bond lengths (or angles).

Mol	Type	Chain	Res	Link	Bond lengths			Bond angles		
					Counts	RMSZ	# Z  > 2	Counts	RMSZ	# Z  > 2
2	SO4	A	400	-	4,4,4	0.13	0	6,6,6	0.15	0
3	C8E	B	400	-	9,9,20	0.46	0	8,8,19	0.33	0
3	C8E	A	401	-	17,17,20	0.50	0	16,16,19	0.39	0
2	SO4	B	396	-	4,4,4	0.17	0	6,6,6	0.12	0
3	C8E	C	398	-	13,13,20	0.43	0	12,12,19	0.42	0
3	C8E	C	399	-	10,10,20	0.42	0	9,9,19	0.27	0
2	SO4	A	398	-	4,4,4	0.17	0	6,6,6	0.09	0
3	C8E	B	401	-	10,10,20	0.36	0	9,9,19	0.49	0
3	C8E	A	403	-	15,15,20	0.43	0	14,14,19	0.56	0
2	SO4	A	396	-	4,4,4	0.13	0	6,6,6	0.41	0
2	SO4	C	396	-	4,4,4	0.14	0	6,6,6	0.10	0
3	C8E	A	405	-	14,14,20	0.45	0	13,13,19	0.54	0
2	SO4	B	397	-	4,4,4	0.20	0	6,6,6	0.30	0
2	SO4	A	399	-	4,4,4	0.17	0	6,6,6	0.19	0
2	SO4	C	395	-	4,4,4	0.15	0	6,6,6	0.24	0
3	C8E	B	398	-	18,18,20	0.40	0	17,17,19	0.34	0
3	C8E	B	399	-	19,19,20	0.41	0	18,18,19	0.37	0
2	SO4	A	397	-	4,4,4	0.14	0	6,6,6	0.34	0
3	C8E	B	402	-	17,17,20	0.46	0	16,16,19	0.45	0
2	SO4	A	395	-	4,4,4	0.12	0	6,6,6	0.44	0
2	SO4	C	397	-	4,4,4	0.15	0	6,6,6	0.08	0
3	C8E	A	404	-	11,11,20	0.36	0	10,10,19	0.49	0
2	SO4	B	395	-	4,4,4	0.10	0	6,6,6	0.38	0
3	C8E	A	402	-	9,9,20	0.44	0	8,8,19	0.26	0

In the following table, the Chirals column lists the number of chiral outliers, the number of chiral centers analysed, the number of these observed in the model and the number defined in the

Chemical Component Dictionary. Similar counts are reported in the Torsion and Rings columns. '-' means no outliers of that kind were identified.

Mol	Type	Chain	Res	Link	Chirals	Torsions	Rings
3	C8E	A	405	-	-	8/12/12/18	-
3	C8E	C	399	-	-	3/8/8/18	-
3	C8E	A	404	-	-	6/9/9/18	-
3	C8E	B	398	-	-	10/16/16/18	-
3	C8E	B	401	-	-	3/8/8/18	-
3	C8E	B	399	-	-	7/17/17/18	-
3	C8E	A	403	-	-	9/13/13/18	-
3	C8E	B	400	-	-	5/7/7/18	-
3	C8E	A	401	-	-	9/15/15/18	-
3	C8E	B	402	-	-	9/15/15/18	-
3	C8E	C	398	-	-	7/11/11/18	-
3	C8E	A	402	-	-	6/7/7/18	-

There are no bond length outliers.

There are no bond angle outliers.

There are no chirality outliers.

All (82) torsion outliers are listed below:

Mol	Chain	Res	Type	Atoms
3	B	398	C8E	O12-C13-C14-O15
3	B	402	C8E	O12-C13-C14-O15
3	A	401	C8E	O12-C13-C14-O15
3	A	403	C8E	C6-C7-C8-O9
3	B	402	C8E	C6-C7-C8-O9
3	A	405	C8E	O18-C19-C20-O21
3	C	399	C8E	O9-C10-C11-O12
3	B	401	C8E	C6-C7-C8-O9
3	A	403	C8E	O18-C19-C20-O21
3	A	401	C8E	C3-C4-C5-C6
3	B	401	C8E	C4-C5-C6-C7
3	B	399	C8E	C3-C4-C5-C6
3	A	402	C8E	O18-C19-C20-O21
3	A	405	C8E	O9-C10-C11-O12
3	B	400	C8E	O12-C13-C14-O15
3	C	398	C8E	O12-C13-C14-O15
3	A	404	C8E	C6-C7-C8-O9

*Continued on next page...*

*Continued from previous page...*

Mol	Chain	Res	Type	Atoms
3	A	401	C8E	C5-C6-C7-C8
3	A	401	C8E	C6-C7-C8-O9
3	A	402	C8E	O12-C13-C14-O15
3	B	400	C8E	O18-C19-C20-O21
3	A	404	C8E	C4-C5-C6-C7
3	B	402	C8E	C4-C5-C6-C7
3	B	399	C8E	O18-C19-C20-O21
3	A	403	C8E	C17-C16-O15-C14
3	B	398	C8E	C3-C4-C5-C6
3	B	402	C8E	C3-C4-C5-C6
3	B	399	C8E	C2-C3-C4-C5
3	B	398	C8E	C6-C7-C8-O9
3	B	402	C8E	O9-C10-C11-O12
3	B	398	C8E	C17-C16-O15-C14
3	A	401	C8E	C13-C14-O15-C16
3	A	405	C8E	C10-C11-O12-C13
3	B	398	C8E	C20-C19-O18-C17
3	A	402	C8E	C13-C14-O15-C16
3	A	405	C8E	C20-C19-O18-C17
3	A	405	C8E	C17-C16-O15-C14
3	A	405	C8E	C11-C10-O9-C8
3	A	403	C8E	O9-C10-C11-O12
3	A	404	C8E	C2-C3-C4-C5
3	B	399	C8E	C10-C11-O12-C13
3	A	401	C8E	C17-C16-O15-C14
3	B	398	C8E	C10-C11-O12-C13
3	C	398	C8E	C17-C16-O15-C14
3	A	404	C8E	C11-C10-O9-C8
3	A	403	C8E	C20-C19-O18-C17
3	B	402	C8E	C10-C11-O12-C13
3	B	398	C8E	O9-C10-C11-O12
3	A	401	C8E	C14-C13-O12-C11
3	A	403	C8E	C7-C8-O9-C10
3	C	398	C8E	C7-C8-O9-C10
3	A	402	C8E	C20-C19-O18-C17
3	B	400	C8E	C17-C16-O15-C14
3	A	403	C8E	C13-C14-O15-C16
3	A	404	C8E	C7-C8-O9-C10
3	B	398	C8E	C7-C8-O9-C10
3	B	401	C8E	C7-C8-O9-C10
3	C	398	C8E	C10-C11-O12-C13
3	C	399	C8E	C7-C8-O9-C10

*Continued on next page...*

*Continued from previous page...*

Mol	Chain	Res	Type	Atoms
3	A	405	C8E	O12-C13-C14-O15
3	B	402	C8E	C17-C16-O15-C14
3	A	402	C8E	C17-C16-O15-C14
3	B	399	C8E	O12-C13-C14-O15
3	A	403	C8E	O15-C16-C17-O18
3	B	399	C8E	C20-C19-O18-C17
3	B	402	C8E	O15-C16-C17-O18
3	A	405	C8E	C16-C17-O18-C19
3	A	404	C8E	C3-C4-C5-C6
3	C	398	C8E	O9-C10-C11-O12
3	A	401	C8E	C11-C10-O9-C8
3	B	399	C8E	C5-C6-C7-C8
3	B	400	C8E	O15-C16-C17-O18
3	A	402	C8E	O15-C16-C17-O18
3	C	398	C8E	O15-C16-C17-O18
3	B	402	C8E	C16-C17-O18-C19
3	C	398	C8E	C13-C14-O15-C16
3	A	401	C8E	C4-C5-C6-C7
3	A	403	C8E	C11-C10-O9-C8
3	B	398	C8E	C13-C14-O15-C16
3	B	400	C8E	C20-C19-O18-C17
3	B	398	C8E	C4-C5-C6-C7
3	C	399	C8E	C10-C11-O12-C13

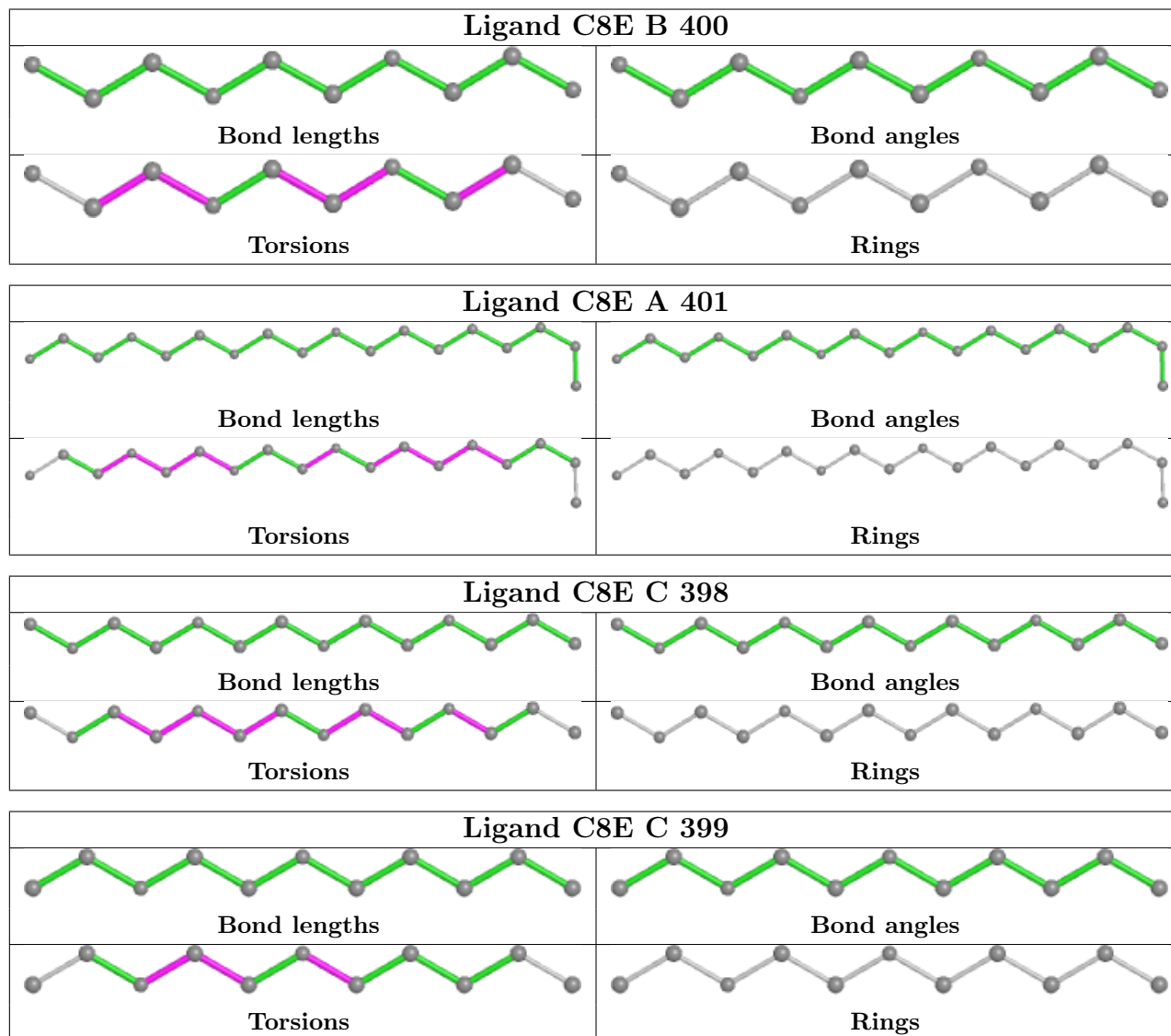
There are no ring outliers.

11 monomers are involved in 26 short contacts:

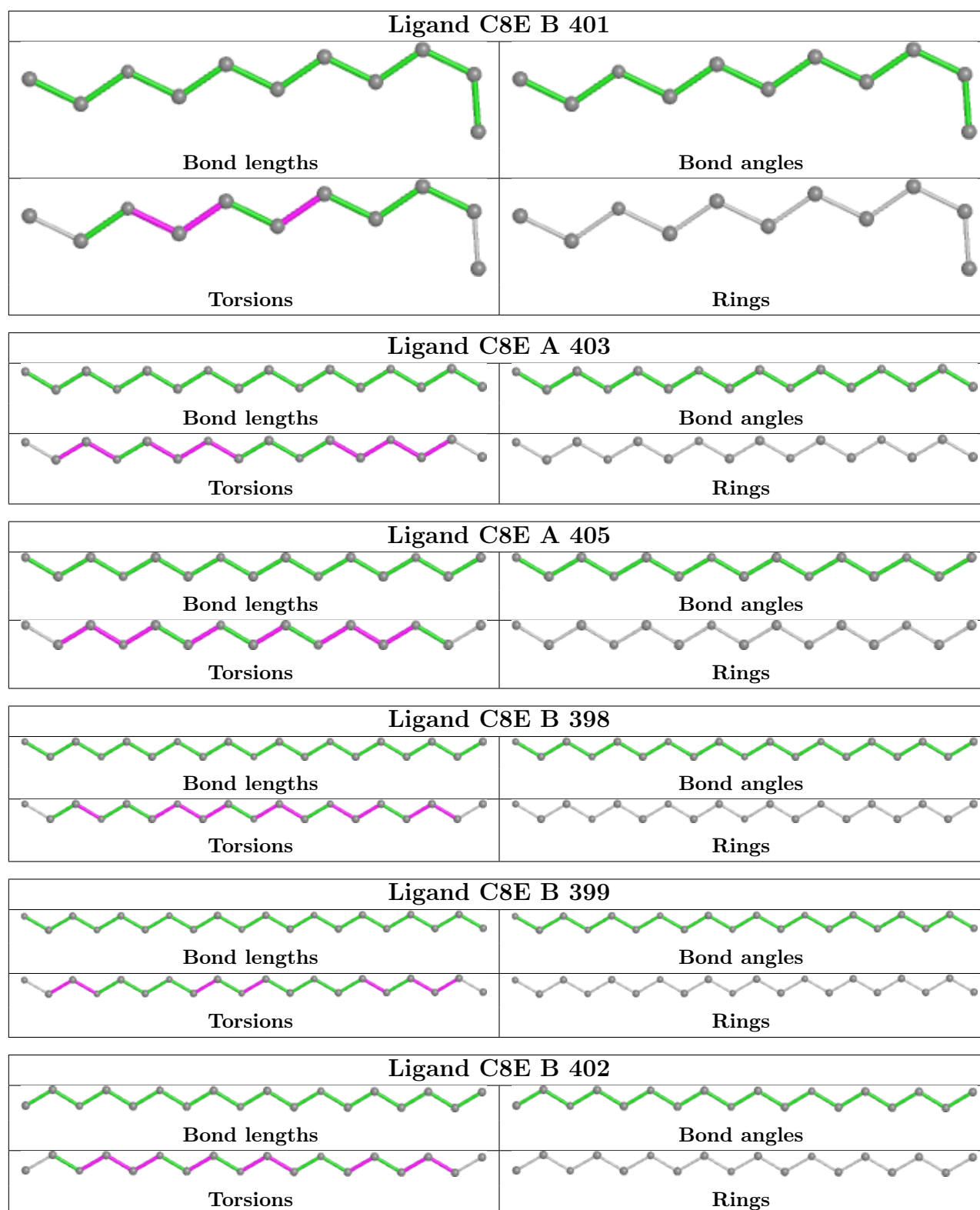
Mol	Chain	Res	Type	Clashes	Symm-Clashes
3	B	400	C8E	2	0
3	C	398	C8E	1	0
3	C	399	C8E	3	0
2	A	398	SO4	1	0
3	B	401	C8E	1	0
3	A	403	C8E	9	0
2	A	399	SO4	1	0
2	C	395	SO4	2	0
3	B	398	C8E	3	0
3	A	404	C8E	1	0
2	B	395	SO4	2	0

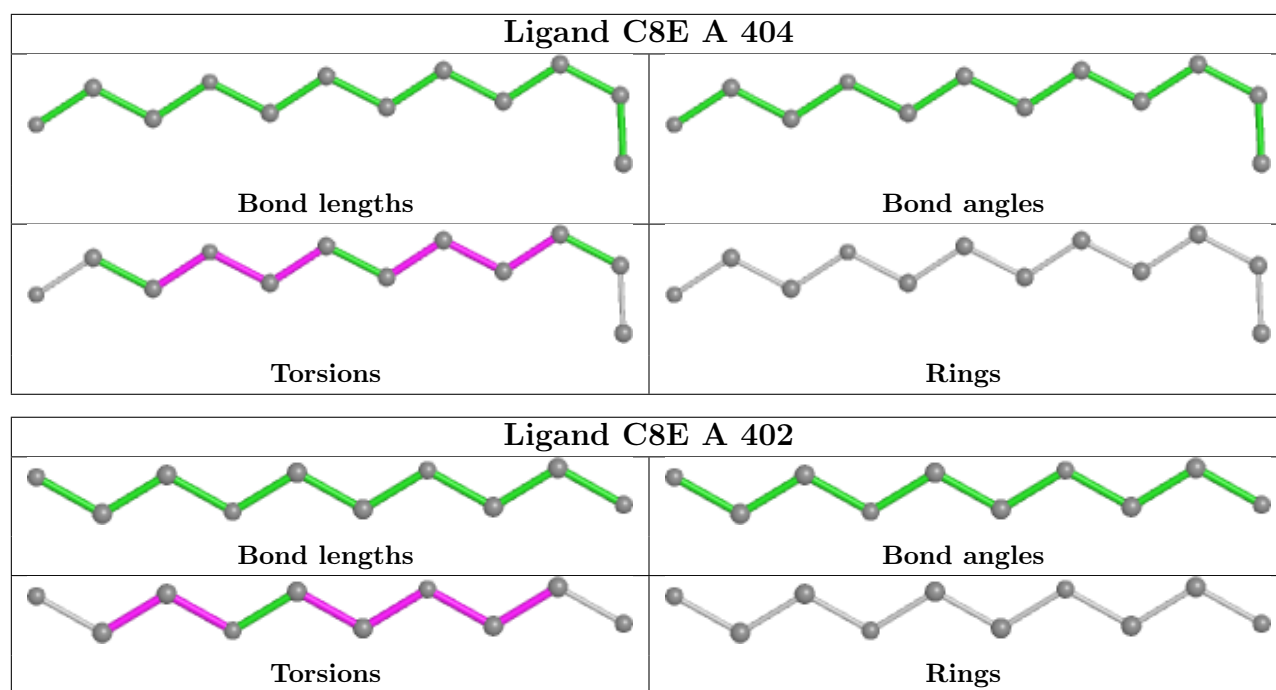
The following is a two-dimensional graphical depiction of Mogul quality analysis of bond lengths, bond angles, torsion angles, and ring geometry for all instances of the Ligand of Interest. In

addition, ligands with molecular weight  $> 250$  and outliers as shown on the validation Tables will also be included. For torsion angles, if less than 5% of the Mogul distribution of torsion angles is within 10 degrees of the torsion angle in question, then that torsion angle is considered an outlier. Any bond that is central to one or more torsion angles identified as an outlier by Mogul will be highlighted in the graph. For rings, the root-mean-square deviation (RMSD) between the ring in question and similar rings identified by Mogul is calculated over all ring torsion angles. If the average RMSD is greater than 60 degrees and the minimal RMSD between the ring in question and any Mogul-identified rings is also greater than 60 degrees, then that ring is considered an outlier. The outliers are highlighted in purple. The color gray indicates Mogul did not find sufficient equivalents in the CSD to analyse the geometry.









## 5.7 Other polymers [i](#)

There are no such residues in this entry.

## 5.8 Polymer linkage issues [i](#)

There are no chain breaks in this entry.

## 6 Fit of model and data [i](#)

### 6.1 Protein, DNA and RNA chains [i](#)

In the following table, the column labelled ‘#RSRZ > 2’ contains the number (and percentage) of RSRZ outliers, followed by percent RSRZ outliers for the chain as percentile scores relative to all X-ray entries and entries of similar resolution. The OWAB column contains the minimum, median, 95<sup>th</sup> percentile and maximum values of the occupancy-weighted average B-factor per residue. The column labelled ‘Q < 0.9’ lists the number of (and percentage) of residues with an average occupancy less than 0.9.

Mol	Chain	Analysed	<RSRZ>	#RSRZ>2	OWAB(Å <sup>2</sup> )	Q<0.9
1	A	377/401 (94%)	-0.00	5 (1%) 77 75	23, 41, 82, 118	0
1	B	368/401 (91%)	0.20	19 (5%) 27 26	22, 51, 94, 119	0
1	C	367/401 (91%)	0.38	37 (10%) 7 6	37, 69, 109, 132	0
All	All	1112/1203 (92%)	0.19	61 (5%) 25 24	22, 52, 100, 132	0

All (61) RSRZ outliers are listed below:

Mol	Chain	Res	Type	RSRZ
1	B	27	SER	6.1
1	C	26	ALA	4.7
1	C	262	TYR	4.2
1	C	178	SER	3.9
1	C	357	SER	3.9
1	C	242	ASP	3.9
1	C	258	TYR	3.8
1	C	260	LEU	3.7
1	C	316	VAL	3.6
1	B	359	PRO	3.6
1	A	359	PRO	3.4
1	C	226	ASP	3.4
1	C	394	TRP	3.4
1	C	34	TRP	3.3
1	C	363	LEU	3.2
1	B	34	TRP	3.2
1	C	89	ASP	3.2
1	C	31	ALA	3.1
1	B	226	ASP	3.1
1	C	223	PRO	3.0
1	B	380	TYR	3.0
1	C	16	TYR	3.0
1	C	210	PHE	2.9

*Continued on next page...*

*Continued from previous page...*

Mol	Chain	Res	Type	RSRZ
1	C	311	TYR	2.9
1	C	224	ILE	2.9
1	B	45	GLY	2.9
1	C	259	SER	2.8
1	B	315	GLY	2.8
1	A	317	GLY	2.8
1	B	358	GLY	2.8
1	B	91	GLY	2.7
1	B	316	VAL	2.7
1	C	227	LYS	2.7
1	C	265	PHE	2.6
1	B	225	ALA	2.6
1	B	28	GLN	2.6
1	B	5	ASP	2.6
1	C	358	GLY	2.6
1	B	317	GLY	2.5
1	C	3	ILE	2.5
1	C	27	SER	2.5
1	C	263	HIS	2.5
1	B	22	ARG	2.4
1	B	3	ILE	2.4
1	C	208	ASP	2.3
1	C	173	GLN	2.3
1	C	163	ASP	2.3
1	C	29	SER	2.2
1	A	318	ILE	2.2
1	C	337	THR	2.2
1	C	158	SER	2.2
1	A	225	ALA	2.2
1	A	226	ASP	2.2
1	C	222	LEU	2.1
1	B	357	SER	2.1
1	B	394	TRP	2.1
1	B	263	HIS	2.1
1	C	317	GLY	2.0
1	C	179	GLY	2.0
1	C	165	THR	2.0
1	C	42	TYR	2.0

## 6.2 Non-standard residues in protein, DNA, RNA chains [i](#)

There are no non-standard protein/DNA/RNA residues in this entry.

### 6.3 Carbohydrates [i](#)

There are no monosaccharides in this entry.

### 6.4 Ligands [i](#)

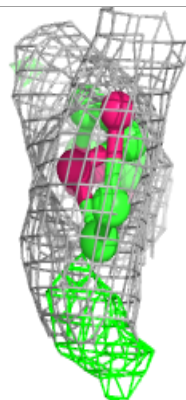
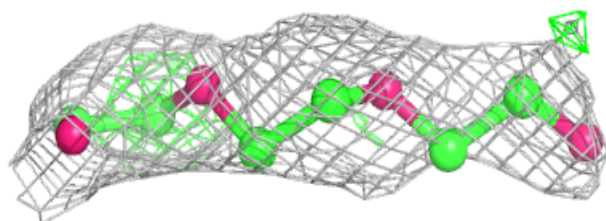
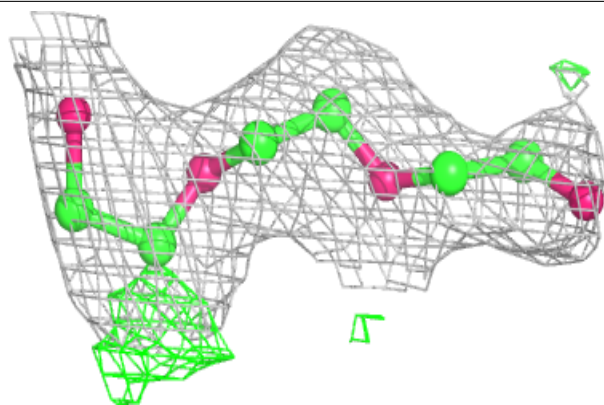
In the following table, the Atoms column lists the number of modelled atoms in the group and the number defined in the chemical component dictionary. The B-factors column lists the minimum, median, 95<sup>th</sup> percentile and maximum values of B factors of atoms in the group. The column labelled 'Q< 0.9' lists the number of atoms with occupancy less than 0.9.

Mol	Type	Chain	Res	Atoms	RSCC	RSR	B-factors(Å <sup>2</sup> )	Q<0.9
3	C8E	A	402	10/21	0.70	0.21	94,97,98,99	0
3	C8E	A	403	16/21	0.75	0.23	68,83,88,89	0
2	SO4	A	400	5/5	0.78	0.24	110,114,116,119	0
3	C8E	A	404	12/21	0.78	0.21	61,78,83,83	0
2	SO4	B	396	5/5	0.80	0.20	103,108,110,114	0
3	C8E	B	400	10/21	0.81	0.20	58,68,78,79	0
3	C8E	B	399	20/21	0.82	0.21	54,67,81,81	0
3	C8E	A	405	15/21	0.82	0.17	62,72,87,89	0
3	C8E	C	399	11/21	0.83	0.27	62,68,73,74	0
3	C8E	B	402	18/21	0.85	0.19	38,59,74,78	0
2	SO4	C	396	5/5	0.85	0.31	118,120,122,126	0
2	SO4	A	398	5/5	0.86	0.18	108,109,110,114	0
3	C8E	C	398	14/21	0.86	0.20	58,65,75,75	0
3	C8E	A	401	18/21	0.86	0.21	47,63,72,74	0
3	C8E	B	398	19/21	0.90	0.16	46,60,67,70	0
3	C8E	B	401	11/21	0.91	0.14	41,53,76,77	0
2	SO4	B	397	5/5	0.91	0.18	65,70,74,86	0
2	SO4	B	395	5/5	0.92	0.21	49,68,74,76	0
2	SO4	C	397	5/5	0.92	0.20	100,101,103,104	0
2	SO4	A	397	5/5	0.95	0.16	57,59,60,65	0
2	SO4	A	399	5/5	0.95	0.10	67,74,78,86	0
2	SO4	A	396	5/5	0.96	0.17	56,57,65,74	0
2	SO4	A	395	5/5	0.96	0.18	51,62,69,77	0
2	SO4	C	395	5/5	0.97	0.12	61,63,67,68	0

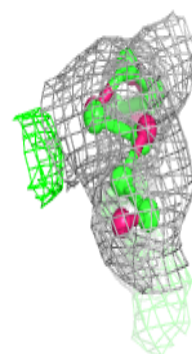
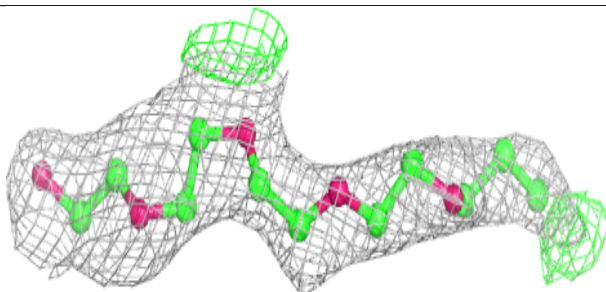
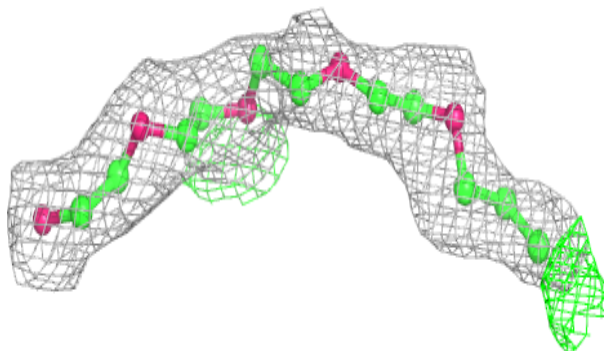
The following is a graphical depiction of the model fit to experimental electron density of all instances of the Ligand of Interest. In addition, ligands with molecular weight > 250 and outliers as shown on the geometry validation Tables will also be included. Each fit is shown from different orientation to approximate a three-dimensional view.

**Electron density around C8E A 402:**

$2mF_o-DF_c$  (at 0.7 rmsd) in gray  
 $mF_o-DF_c$  (at 3 rmsd) in purple (negative)  
and green (positive)

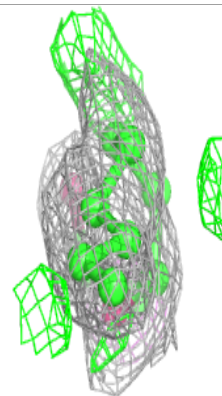
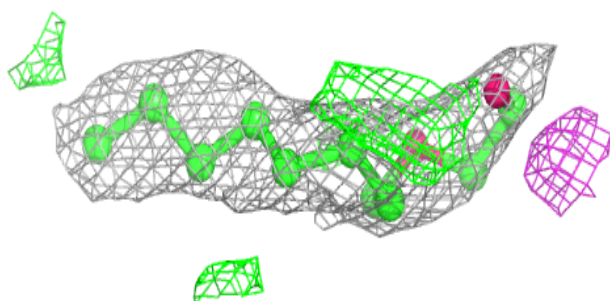
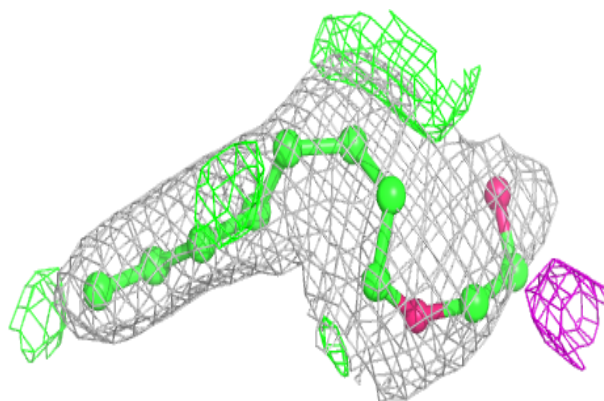
**Electron density around C8E A 403:**

$2mF_o-DF_c$  (at 0.7 rmsd) in gray  
 $mF_o-DF_c$  (at 3 rmsd) in purple (negative)  
and green (positive)

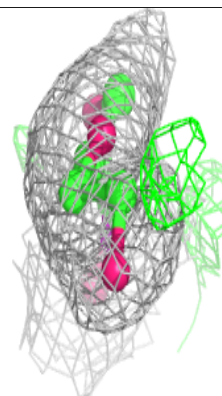
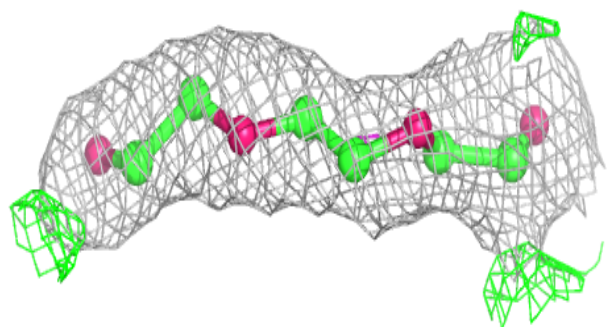
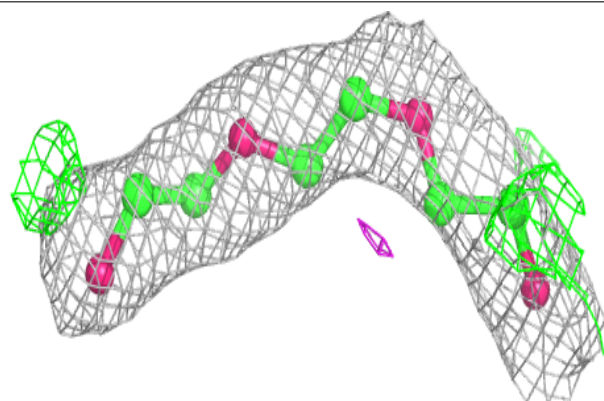


**Electron density around C8E A 404:**

$2mF_o-DF_c$  (at 0.7 rmsd) in gray  
 $mF_o-DF_c$  (at 3 rmsd) in purple (negative)  
and green (positive)

**Electron density around C8E B 400:**

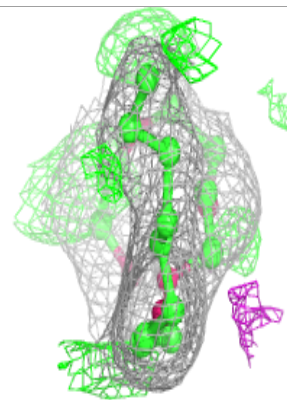
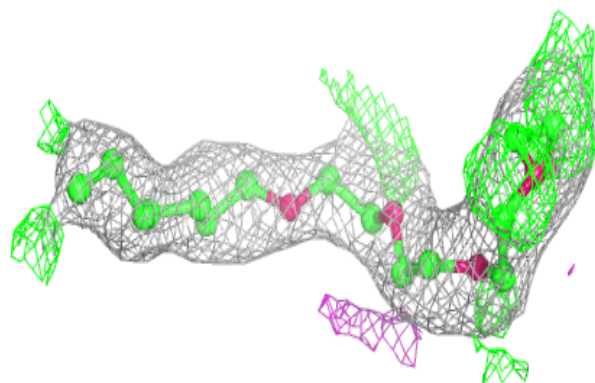
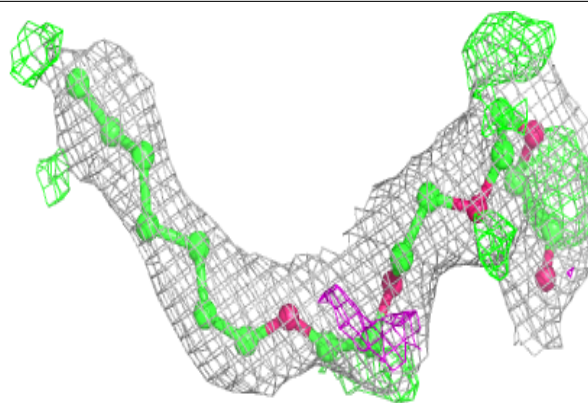
$2mF_o-DF_c$  (at 0.7 rmsd) in gray  
 $mF_o-DF_c$  (at 3 rmsd) in purple (negative)  
and green (positive)



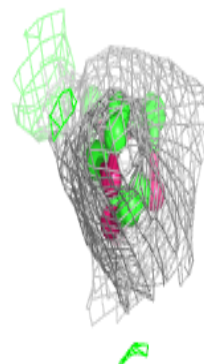
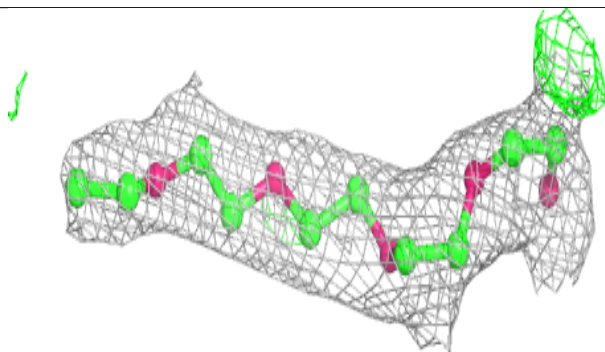
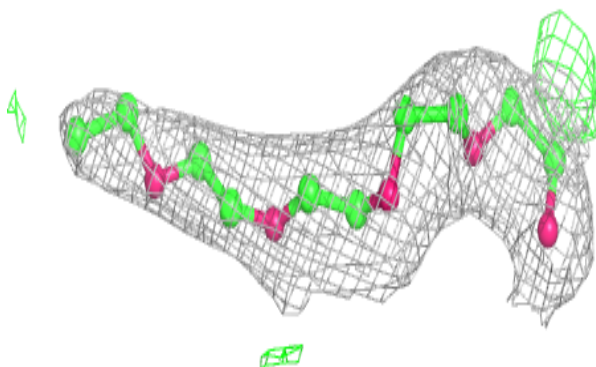


**Electron density around C8E B 399:**

$2mF_o-DF_c$  (at 0.7 rmsd) in gray  
 $mF_o-DF_c$  (at 3 rmsd) in purple (negative)  
and green (positive)

**Electron density around C8E A 405:**

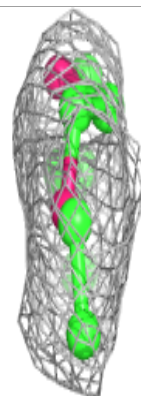
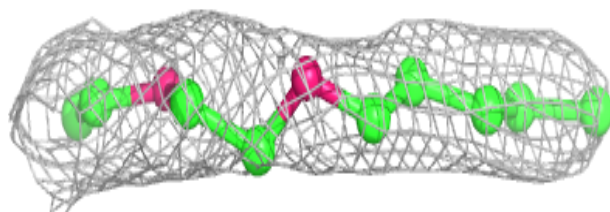
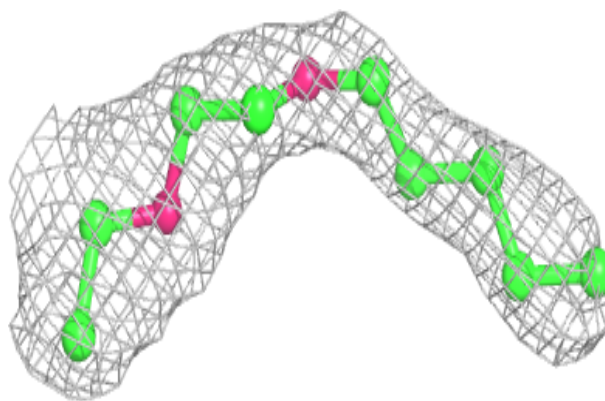
$2mF_o-DF_c$  (at 0.7 rmsd) in gray  
 $mF_o-DF_c$  (at 3 rmsd) in purple (negative)  
and green (positive)



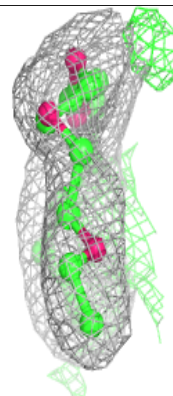
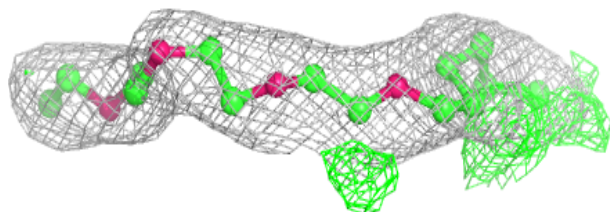
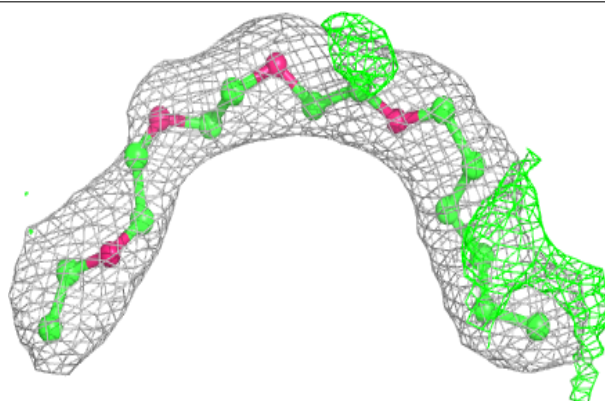


**Electron density around C8E C 399:**

$2mF_o-DF_c$  (at 0.7 rmsd) in gray  
 $mF_o-DF_c$  (at 3 rmsd) in purple (negative)  
and green (positive)

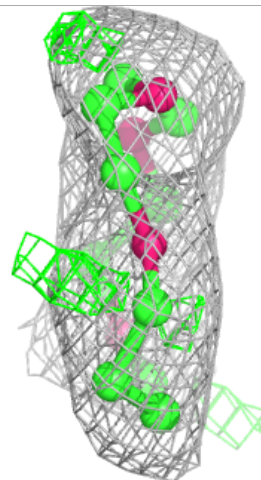
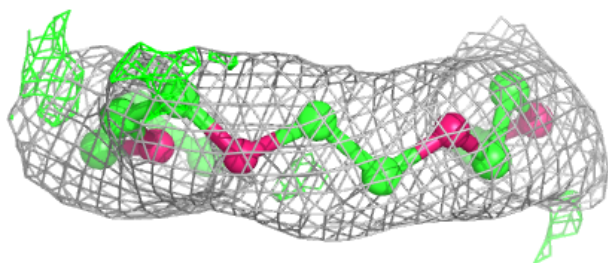
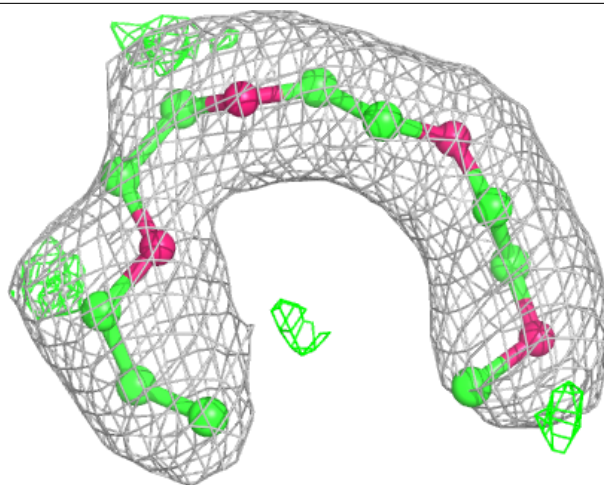
**Electron density around C8E B 402:**

$2mF_o-DF_c$  (at 0.7 rmsd) in gray  
 $mF_o-DF_c$  (at 3 rmsd) in purple (negative)  
and green (positive)



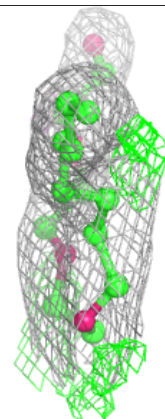
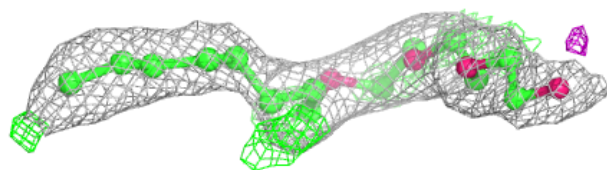
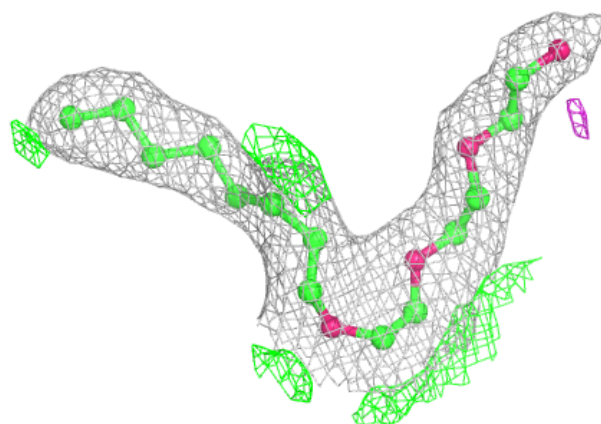
**Electron density around C8E C 398:**

$2mF_o-DF_c$  (at 0.7 rmsd) in gray  
 $mF_o-DF_c$  (at 3 rmsd) in purple (negative)  
and green (positive)

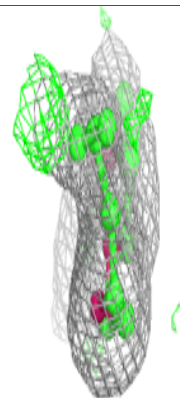
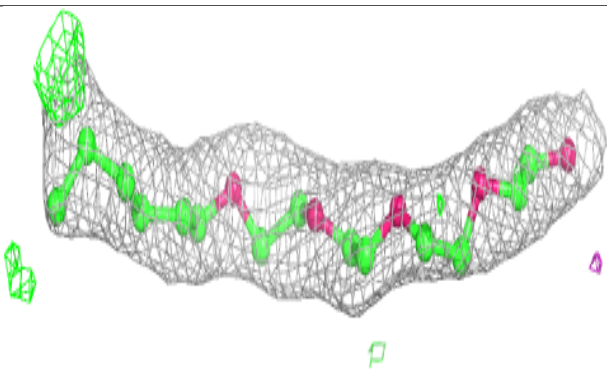
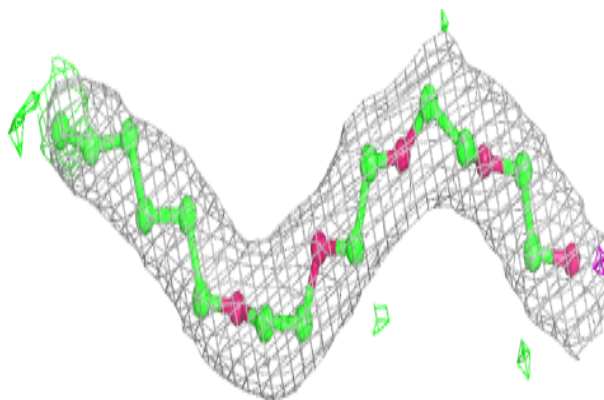


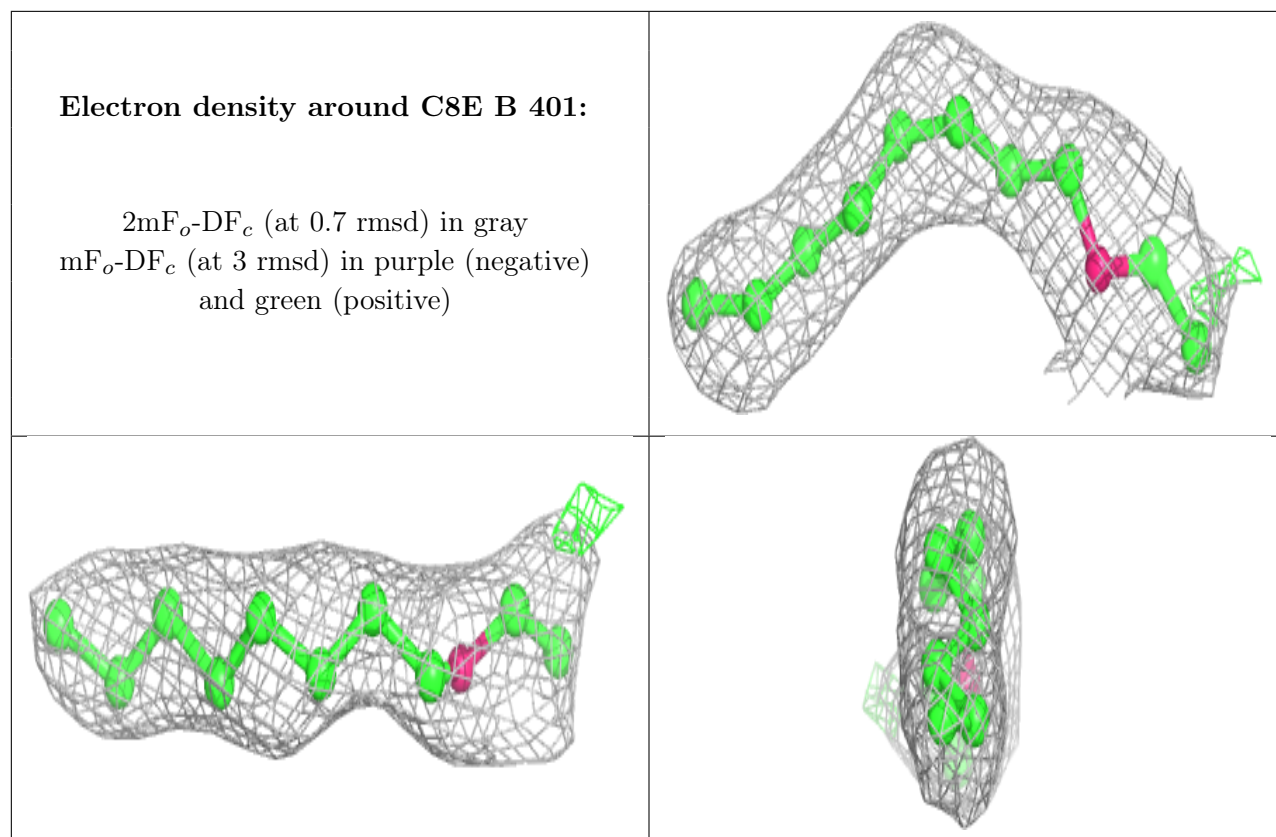
**Electron density around C8E A 401:**

$2mF_o-DF_c$  (at 0.7 rmsd) in gray  
 $mF_o-DF_c$  (at 3 rmsd) in purple (negative)  
and green (positive)

**Electron density around C8E B 398:**

$2mF_o-DF_c$  (at 0.7 rmsd) in gray  
 $mF_o-DF_c$  (at 3 rmsd) in purple (negative)  
and green (positive)





## 6.5 Other polymers [i](#)

There are no such residues in this entry.