



wwPDB EM Validation Summary Report ⓘ

Dec 11, 2022 – 06:38 pm GMT

PDB ID : 6T2C
EMDB ID : EMD-10368
Title : Bat Influenza A polymerase recycling complex
Authors : Wandzik, J.M.; Kouba, T.; Cusack, S.
Deposited on : 2019-10-08
Resolution : 3.52 Å(reported)

This is a wwPDB EM Validation Summary Report for a publicly released PDB entry.

We welcome your comments at validation@mail.wwpdb.org

A user guide is available at

<https://www.wwpdb.org/validation/2017/EMValidationReportHelp>

with specific help available everywhere you see the ⓘ symbol.

The types of validation reports are described at

<http://www.wwpdb.org/validation/2017/FAQs#types>.

The following versions of software and data (see [references ⓘ](#)) were used in the production of this report:

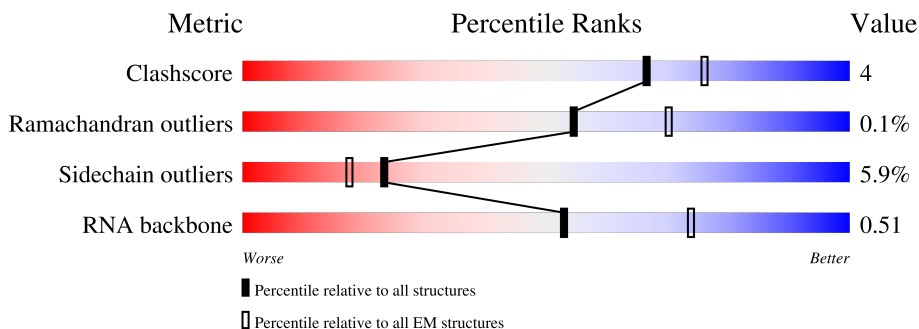
EMDB validation analysis : 0.0.1.dev43
MolProbity : 4.02b-467
Percentile statistics : 20191225.v01 (using entries in the PDB archive December 25th 2019)
MapQ : 1.9.9
Ideal geometry (proteins) : Engh & Huber (2001)
Ideal geometry (DNA, RNA) : Parkinson et al. (1996)
Validation Pipeline (wwPDB-VP) : 2.31.3

1 Overall quality at a glance i

The following experimental techniques were used to determine the structure:
ELECTRON MICROSCOPY

The reported resolution of this entry is 3.52 Å.

Percentile scores (ranging between 0-100) for global validation metrics of the entry are shown in the following graphic. The table shows the number of entries on which the scores are based.



Metric	Whole archive (#Entries)	EM structures (#Entries)
Clashscore	158937	4297
Ramachandran outliers	154571	4023
Sidechain outliers	154315	3826
RNA backbone	4643	859

The table below summarises the geometric issues observed across the polymeric chains and their fit to the map. The red, orange, yellow and green segments of the bar indicate the fraction of residues that contain outliers for ≥ 3 , 2, 1 and 0 types of geometric quality criteria respectively. A grey segment represents the fraction of residues that are not modelled. The numeric value for each fraction is indicated below the corresponding segment, with a dot representing fractions $\leq 5\%$. The upper red bar (where present) indicates the fraction of residues that have poor fit to the EM map (all-atom inclusion $< 40\%$). The numeric value is given above the bar.

Mol	Chain	Length	Quality of chain
1	A	738	 6% 61% 8% 30%
2	B	776	 7% 69% 10% 19%
3	C	809	 8% 11% 86% 38%
4	V	34	 38% 53% 26% 6% 15%

2 Entry composition

There are 5 unique types of molecules in this entry. The entry contains 10700 atoms, of which 0 are hydrogens and 0 are deuteriums.

In the tables below, the AltConf column contains the number of residues with at least one atom in alternate conformation and the Trace column contains the number of residues modelled with at most 2 atoms.

- Molecule 1 is a protein called Polymerase acidic protein.

Mol	Chain	Residues	Atoms					AltConf	Trace
			Total	C	N	O	S		
1	A	513	4145	2640	700	778	27	0	0

There are 25 discrepancies between the modelled and reference sequences:

Chain	Residue	Modelled	Actual	Comment	Reference
A	-13	GLY	-	expression tag	UNP H6QM92
A	-12	SER	-	expression tag	UNP H6QM92
A	-11	HIS	-	expression tag	UNP H6QM92
A	-10	HIS	-	expression tag	UNP H6QM92
A	-9	HIS	-	expression tag	UNP H6QM92
A	-8	HIS	-	expression tag	UNP H6QM92
A	-7	HIS	-	expression tag	UNP H6QM92
A	-6	HIS	-	expression tag	UNP H6QM92
A	-5	HIS	-	expression tag	UNP H6QM92
A	-4	HIS	-	expression tag	UNP H6QM92
A	-3	GLY	-	expression tag	UNP H6QM92
A	-2	SER	-	expression tag	UNP H6QM92
A	-1	GLY	-	expression tag	UNP H6QM92
A	0	SER	-	expression tag	UNP H6QM92
A	714	GLY	-	expression tag	UNP H6QM92
A	715	SER	-	expression tag	UNP H6QM92
A	716	GLY	-	expression tag	UNP H6QM92
A	717	SER	-	expression tag	UNP H6QM92
A	718	GLY	-	expression tag	UNP H6QM92
A	719	GLU	-	expression tag	UNP H6QM92
A	720	ASN	-	expression tag	UNP H6QM92
A	721	LEU	-	expression tag	UNP H6QM92
A	722	TYR	-	expression tag	UNP H6QM92
A	723	PHE	-	expression tag	UNP H6QM92
A	724	GLN	-	expression tag	UNP H6QM92

- Molecule 2 is a protein called RNA-directed RNA polymerase catalytic subunit.

Mol	Chain	Residues	Atoms					AltConf	Trace
			Total	C	N	O	S		
2	B	626	4996	3152	880	933	31	0	0

There are 20 discrepancies between the modelled and reference sequences:

Chain	Residue	Modelled	Actual	Comment	Reference
B	-8	GLY	-	expression tag	UNP H6QM91
B	-7	SER	-	expression tag	UNP H6QM91
B	-6	GLY	-	expression tag	UNP H6QM91
B	-5	SER	-	expression tag	UNP H6QM91
B	-4	GLY	-	expression tag	UNP H6QM91
B	-3	SER	-	expression tag	UNP H6QM91
B	-2	GLY	-	expression tag	UNP H6QM91
B	-1	SER	-	expression tag	UNP H6QM91
B	0	GLY	-	expression tag	UNP H6QM91
B	757	GLY	-	expression tag	UNP H6QM91
B	758	SER	-	expression tag	UNP H6QM91
B	759	GLY	-	expression tag	UNP H6QM91
B	760	SER	-	expression tag	UNP H6QM91
B	761	GLY	-	expression tag	UNP H6QM91
B	762	GLU	-	expression tag	UNP H6QM91
B	763	ASN	-	expression tag	UNP H6QM91
B	764	LEU	-	expression tag	UNP H6QM91
B	765	TYR	-	expression tag	UNP H6QM91
B	766	PHE	-	expression tag	UNP H6QM91
B	767	GLN	-	expression tag	UNP H6QM91

- Molecule 3 is a protein called Polymerase basic protein 2.

Mol	Chain	Residues	Atoms					AltConf	Trace
			Total	C	N	O	S		
3	C	116	941	602	164	168	7	0	0

There are 49 discrepancies between the modelled and reference sequences:

Chain	Residue	Modelled	Actual	Comment	Reference
C	-8	GLY	-	expression tag	UNP H6QM90
C	-7	SER	-	expression tag	UNP H6QM90
C	-6	GLY	-	expression tag	UNP H6QM90
C	-5	SER	-	expression tag	UNP H6QM90
C	-4	GLY	-	expression tag	UNP H6QM90
C	-3	SER	-	expression tag	UNP H6QM90
C	-2	GLY	-	expression tag	UNP H6QM90

Continued on next page...

Continued from previous page...

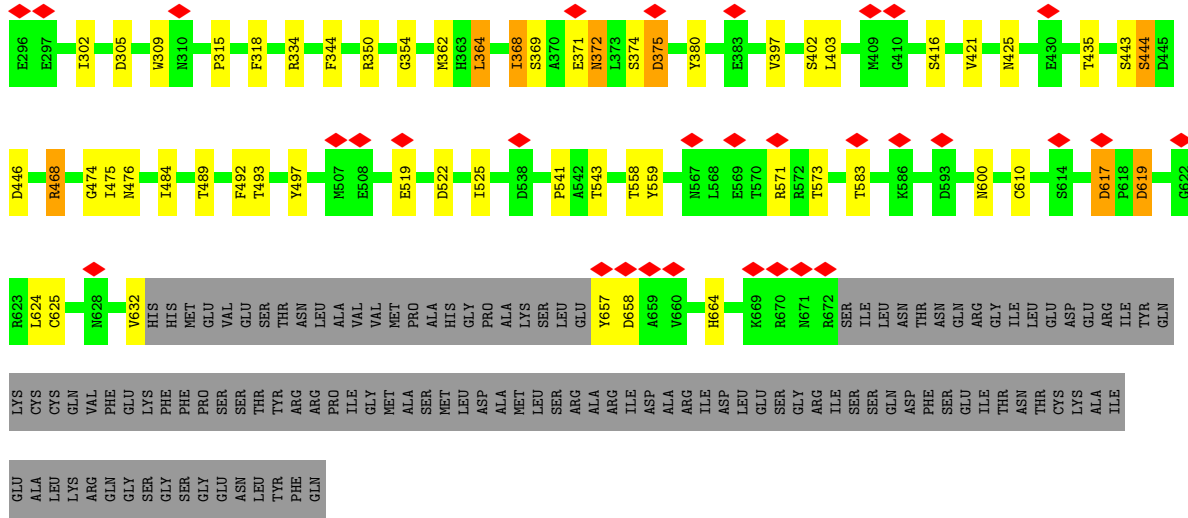
Chain	Residue	Modelled	Actual	Comment	Reference
C	-1	SER	-	expression tag	UNP H6QM90
C	0	GLY	-	expression tag	UNP H6QM90
C	761	GLY	-	expression tag	UNP H6QM90
C	762	TRP	-	expression tag	UNP H6QM90
C	763	SER	-	expression tag	UNP H6QM90
C	764	HIS	-	expression tag	UNP H6QM90
C	765	PRO	-	expression tag	UNP H6QM90
C	766	GLN	-	expression tag	UNP H6QM90
C	767	PHE	-	expression tag	UNP H6QM90
C	768	GLU	-	expression tag	UNP H6QM90
C	769	LYS	-	expression tag	UNP H6QM90
C	770	GLY	-	expression tag	UNP H6QM90
C	771	GLY	-	expression tag	UNP H6QM90
C	772	GLY	-	expression tag	UNP H6QM90
C	773	SER	-	expression tag	UNP H6QM90
C	774	GLY	-	expression tag	UNP H6QM90
C	775	GLY	-	expression tag	UNP H6QM90
C	776	GLY	-	expression tag	UNP H6QM90
C	777	SER	-	expression tag	UNP H6QM90
C	778	GLY	-	expression tag	UNP H6QM90
C	779	GLY	-	expression tag	UNP H6QM90
C	780	SER	-	expression tag	UNP H6QM90
C	781	ALA	-	expression tag	UNP H6QM90
C	782	TRP	-	expression tag	UNP H6QM90
C	783	SER	-	expression tag	UNP H6QM90
C	784	HIS	-	expression tag	UNP H6QM90
C	785	PRO	-	expression tag	UNP H6QM90
C	786	GLN	-	expression tag	UNP H6QM90
C	787	PHE	-	expression tag	UNP H6QM90
C	788	GLU	-	expression tag	UNP H6QM90
C	789	LYS	-	expression tag	UNP H6QM90
C	790	GLY	-	expression tag	UNP H6QM90
C	791	ARG	-	expression tag	UNP H6QM90
C	792	SER	-	expression tag	UNP H6QM90
C	793	GLY	-	expression tag	UNP H6QM90
C	794	GLY	-	expression tag	UNP H6QM90
C	795	GLU	-	expression tag	UNP H6QM90
C	796	ASN	-	expression tag	UNP H6QM90
C	797	LEU	-	expression tag	UNP H6QM90
C	798	TYR	-	expression tag	UNP H6QM90
C	799	PHE	-	expression tag	UNP H6QM90
C	800	GLN	-	expression tag	UNP H6QM90

- Molecule 4 is a RNA chain called vRNA.

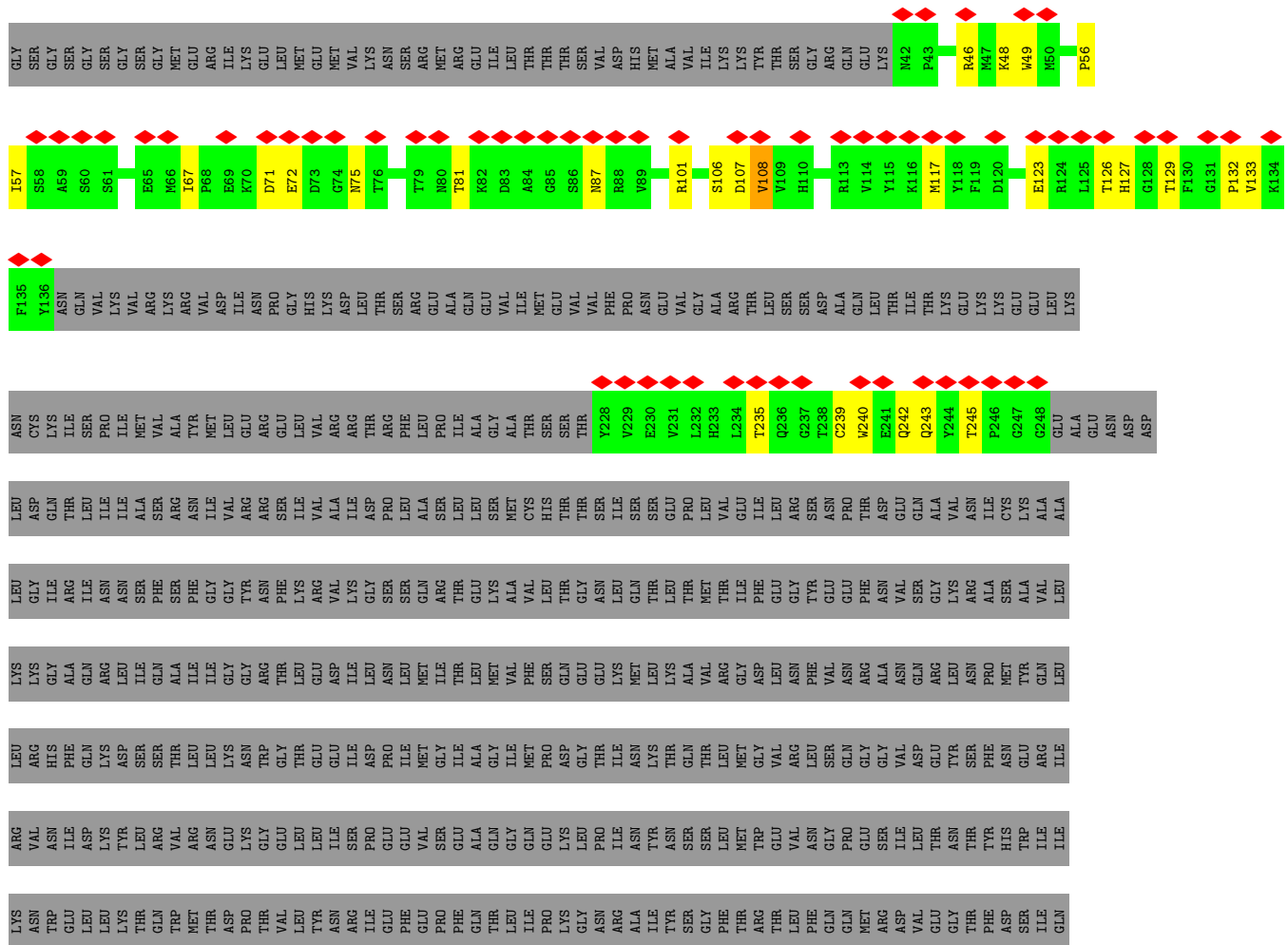
Mol	Chain	Residues	Atoms					AltConf	Trace
			Total	C	N	O	P		
4	V	29	617	276	109	203	29	0	0

- Molecule 5 is MAGNESIUM ION (three-letter code: MG) (formula: Mg).

Mol	Chain	Residues	Atoms		AltConf
			Total	Mg	
5	B	1	1	1	0

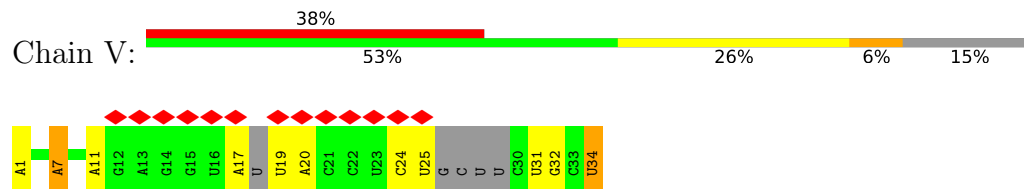


• Molecule 3: Polymerase basic protein 2



ILE	PRO	MET
ILE	GLU	GLU
LYS	ARG	ASN
LEU	SER	LEU
LEU	ILE	TYR
PRO	THR	PHE
PHE	ASP	GLN
SER	SER	
ALA	GLU	
ALA	SER	
HIS	SER	
PRO	THR	
PRO	ASP	
SER	ILE	
SER	SER	
LEU	GLU	
LEU	SER	
GLY	ALA	
THR	VAL	
THR	LEU	
GLN	ARG	
PHE	GLY	
SER	PHE	
SER	SER	
THR	ILE	
THR	LEU	
THR	ILE	
THR	LEU	
GLY	GLY	
ASN	LYS	
ASN	ALA	
ILE	ILE	
ARG	ASN	
ARG	ARG	
ALA	SER	
ALA	GLY	
LYS	TRP	
LYS	SER	
ALA	SER	
PRO	HIS	
GLY	PRO	
LEU	PRO	
ARG	GLY	
LEU	PRO	
LEU	VAL	
LEU	VAL	
LEU	THR	
ILE	ILE	
ARG	ILE	
GLY	GLY	
ASN	GLU	
ASN	SER	
GLN	GLY	
VAL	GLY	
VAL	ASP	
ASN	LYS	
TYR	LEU	
ASN	GLY	
ASN	GLY	
GLN	GLU	
MET	LYS	
TRP	ALA	
ASN	TRP	
ASN	SER	
VAL	SER	
VAL	HIS	
ILE	PRO	
ILE	GLN	
VAL	PHE	
LEU	GLU	
LEU	GLN	
GLY	LYS	
LYS	GLY	
SER	ARG	
VAL	SER	
LEU	GLY	
SER	GLY	

- Molecule 4: vRNA



4 Experimental information

Property	Value	Source
EM reconstruction method	SINGLE PARTICLE	Depositor
Imposed symmetry	POINT, Not provided	
Number of particles used	16301	Depositor
Resolution determination method	FSC 0.143 CUT-OFF	Depositor
CTF correction method	PHASE FLIPPING ONLY	Depositor
Microscope	TFS GLACIOS	Depositor
Voltage (kV)	200	Depositor
Electron dose ($e^-/\text{\AA}^2$)	31	Depositor
Minimum defocus (nm)	Not provided	
Maximum defocus (nm)	Not provided	
Magnification	Not provided	
Image detector	FEI FALCON III (4k x 4k)	Depositor
Maximum map value	0.209	Depositor
Minimum map value	-0.125	Depositor
Average map value	-0.000	Depositor
Map value standard deviation	0.008	Depositor
Recommended contour level	0.05	Depositor
Map size (\AA)	288.30002, 288.30002, 288.30002	wwPDB
Map dimensions	300, 300, 300	wwPDB
Map angles ($^\circ$)	90.0, 90.0, 90.0	wwPDB
Pixel spacing (\AA)	0.9610001, 0.9610001, 0.9610001	Depositor

5 Model quality [i](#)

5.1 Standard geometry [i](#)

Bond lengths and bond angles in the following residue types are not validated in this section: MG

The Z score for a bond length (or angle) is the number of standard deviations the observed value is removed from the expected value. A bond length (or angle) with $|Z| > 5$ is considered an outlier worth inspection. RMSZ is the root-mean-square of all Z scores of the bond lengths (or angles).

Mol	Chain	Bond lengths		Bond angles	
		RMSZ	# Z >5	RMSZ	# Z >5
1	A	0.42	0/4235	0.49	0/5707
2	B	0.39	0/5097	0.50	0/6887
3	C	0.30	0/970	0.48	0/1320
4	V	0.69	1/687 (0.1%)	0.95	1/1061 (0.1%)
All	All	0.42	1/10989 (0.0%)	0.54	1/14975 (0.0%)

All (1) bond length outliers are listed below:

Mol	Chain	Res	Type	Atoms	Z	Observed(Å)	Ideal(Å)
4	V	1	A	OP3-P	-11.20	1.47	1.61

All (1) bond angle outliers are listed below:

Mol	Chain	Res	Type	Atoms	Z	Observed(°)	Ideal(°)
4	V	7	A	O4'-C1'-N9	5.24	112.39	108.20

There are no chirality outliers.

There are no planarity outliers.

5.2 Too-close contacts [i](#)

In the following table, the Non-H and H(model) columns list the number of non-hydrogen atoms and hydrogen atoms in the chain respectively. The H(added) column lists the number of hydrogen atoms added and optimized by MolProbity. The Clashes column lists the number of clashes within the asymmetric unit, whereas Symm-Clashes lists symmetry-related clashes.

Mol	Chain	Non-H	H(model)	H(added)	Clashes	Symm-Clashes
1	A	4145	0	4121	34	0
2	B	4996	0	4988	46	0

Continued on next page...

Continued from previous page...

Mol	Chain	Non-H	H(model)	H(added)	Clashes	Symm-Clashes
3	C	941	0	902	11	0
4	V	617	0	314	6	0
5	B	1	0	0	0	0
All	All	10700	0	10325	84	0

The all-atom clashscore is defined as the number of clashes found per 1000 atoms (including hydrogen atoms). The all-atom clashscore for this structure is 4.

The worst 5 of 84 close contacts within the same asymmetric unit are listed below, sorted by their clash magnitude.

Atom-1	Atom-2	Interatomic distance (Å)	Clash overlap (Å)
1:A:544:GLU:HG2	1:A:553:MET:SD	1.74	1.26
1:A:546:ARG:HG2	1:A:551:THR:HG23	1.42	1.02
1:A:544:GLU:CG	1:A:553:MET:SD	2.55	0.93
2:B:48:ASP:O	2:B:48:ASP:OD1	2.10	0.70
2:B:292:LYS:O	2:B:292:LYS:HG2	1.98	0.64

There are no symmetry-related clashes.

5.3 Torsion angles [i](#)

5.3.1 Protein backbone [i](#)

In the following table, the Percentiles column shows the percent Ramachandran outliers of the chain as a percentile score with respect to all PDB entries followed by that with respect to all EM entries.

The Analysed column shows the number of residues for which the backbone conformation was analysed, and the total number of residues.

Mol	Chain	Analysed	Favoured	Allowed	Outliers	Percentiles	
1	A	511/738 (69%)	483 (94%)	28 (6%)	0	100	100
2	B	620/776 (80%)	588 (95%)	31 (5%)	1 (0%)	47	80
3	C	112/809 (14%)	100 (89%)	12 (11%)	0	100	100
All	All	1243/2323 (54%)	1171 (94%)	71 (6%)	1 (0%)	54	84

All (1) Ramachandran outliers are listed below:

Mol	Chain	Res	Type
2	B	444	SER

5.3.2 Protein sidechains [i](#)

In the following table, the Percentiles column shows the percent sidechain outliers of the chain as a percentile score with respect to all PDB entries followed by that with respect to all EM entries.

The Analysed column shows the number of residues for which the sidechain conformation was analysed, and the total number of residues.

Mol	Chain	Analysed	Rotameric	Outliers	Percentiles	
1	A	456/657 (69%)	437 (96%)	19 (4%)	30	63
2	B	548/676 (81%)	513 (94%)	35 (6%)	17	51
3	C	100/706 (14%)	89 (89%)	11 (11%)	6	30
All	All	1104/2039 (54%)	1039 (94%)	65 (6%)	23	53

5 of 65 residues with a non-rotameric sidechain are listed below:

Mol	Chain	Res	Type
3	C	108	VAL
3	C	123	GLU
2	B	171	LEU
2	B	148	GLU
3	C	126	THR

Sometimes sidechains can be flipped to improve hydrogen bonding and reduce clashes. All (5) such sidechains are listed below:

Mol	Chain	Res	Type
1	A	414	ASN
2	B	108	GLN
2	B	176	ASN
2	B	567	ASN
3	C	87	ASN

5.3.3 RNA [i](#)

Mol	Chain	Analysed	Backbone Outliers	Pucker Outliers
4	V	26/34 (76%)	4 (15%)	0

All (4) RNA backbone outliers are listed below:

Mol	Chain	Res	Type
4	V	7	A
4	V	11	A
4	V	17	A
4	V	34	U

There are no RNA pucker outliers to report.

5.4 Non-standard residues in protein, DNA, RNA chains [i](#)

There are no non-standard protein/DNA/RNA residues in this entry.

5.5 Carbohydrates [i](#)

There are no monosaccharides in this entry.

5.6 Ligand geometry [i](#)

Of 1 ligands modelled in this entry, 1 is monoatomic - leaving 0 for Mogul analysis.

There are no bond length outliers.

There are no bond angle outliers.

There are no chirality outliers.

There are no torsion outliers.

There are no ring outliers.

No monomer is involved in short contacts.

5.7 Other polymers [i](#)

There are no such residues in this entry.

5.8 Polymer linkage issues [i](#)

There are no chain breaks in this entry.

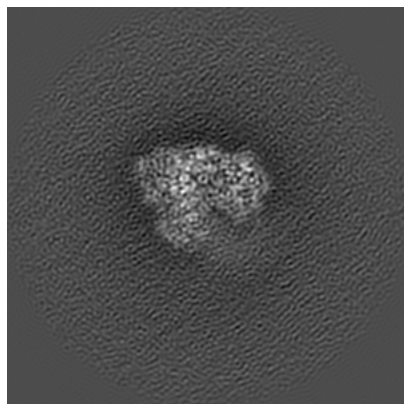
6 Map visualisation [i](#)

This section contains visualisations of the EMDB entry EMD-10368. These allow visual inspection of the internal detail of the map and identification of artifacts.

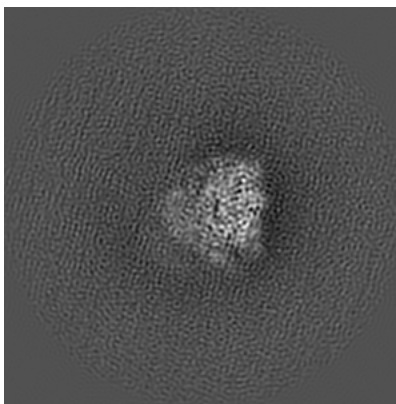
Images derived from a raw map, generated by summing the deposited half-maps, are presented below the corresponding image components of the primary map to allow further visual inspection and comparison with those of the primary map.

6.1 Orthogonal projections [i](#)

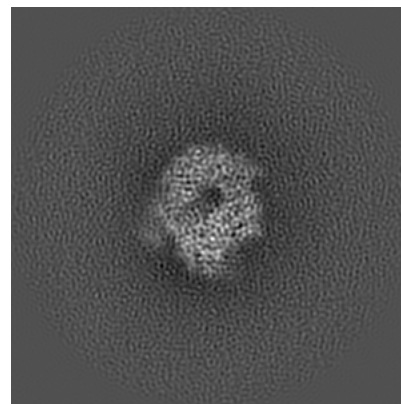
6.1.1 Primary map



X

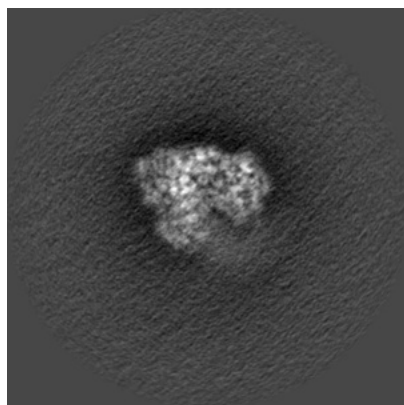


Y

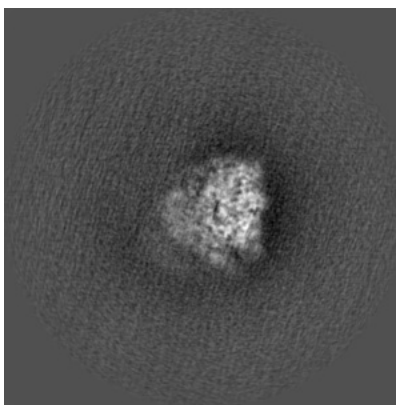


Z

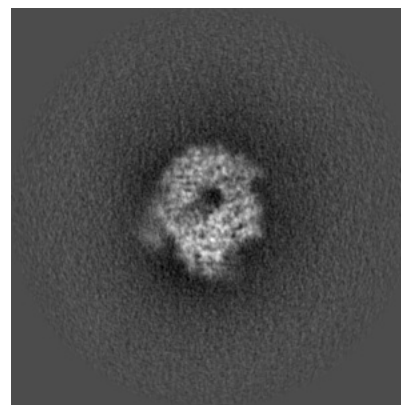
6.1.2 Raw map



X



Y

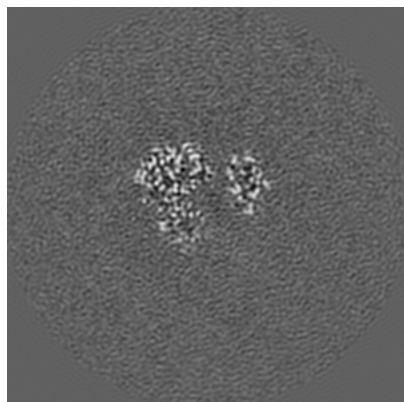


Z

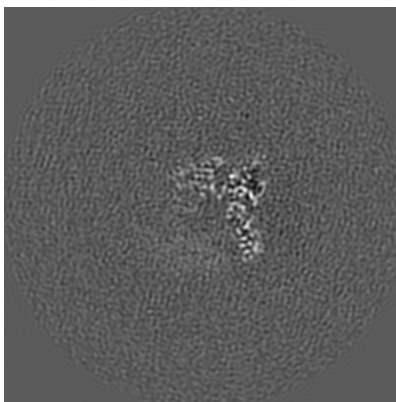
The images above show the map projected in three orthogonal directions.

6.2 Central slices [i](#)

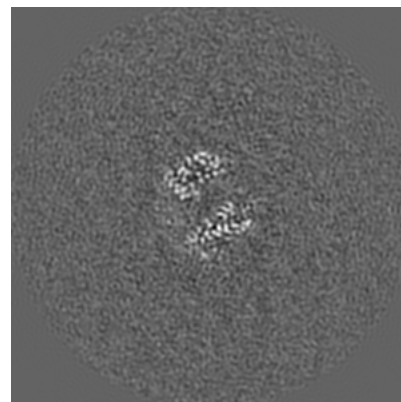
6.2.1 Primary map



X Index: 150

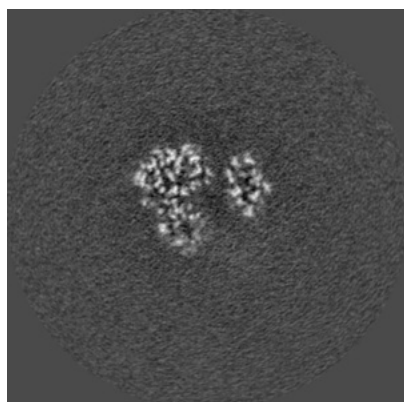


Y Index: 150

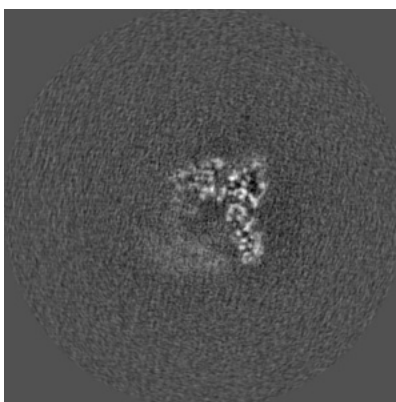


Z Index: 150

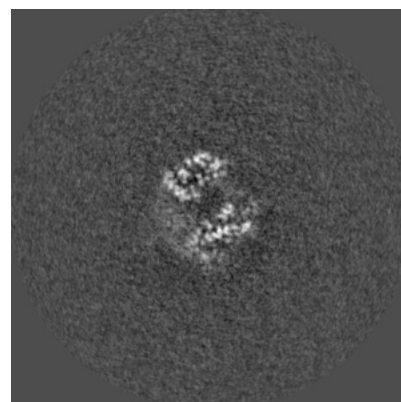
6.2.2 Raw map



X Index: 150



Y Index: 150

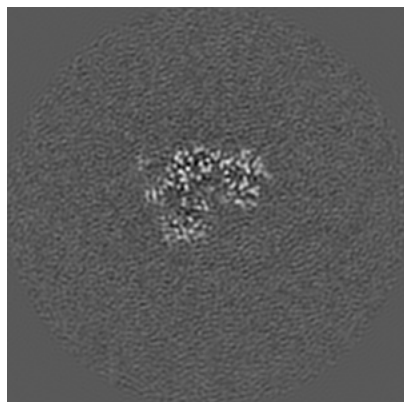


Z Index: 150

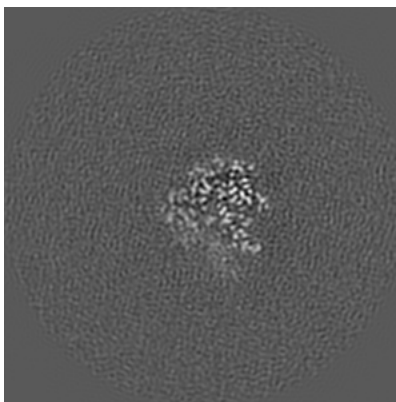
The images above show central slices of the map in three orthogonal directions.

6.3 Largest variance slices [i](#)

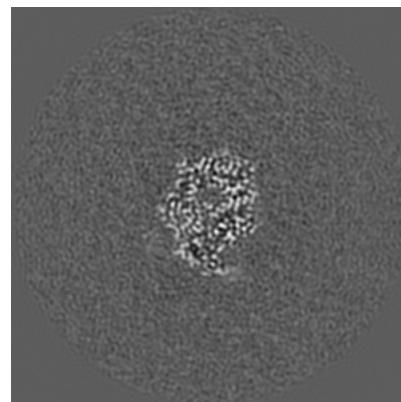
6.3.1 Primary map



X Index: 159

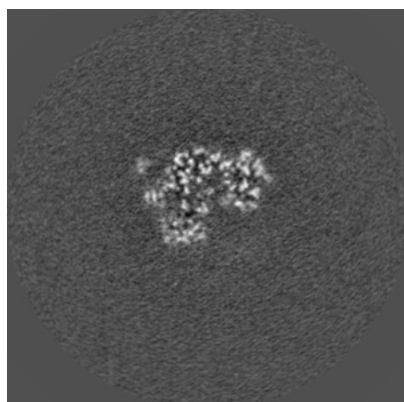


Y Index: 135

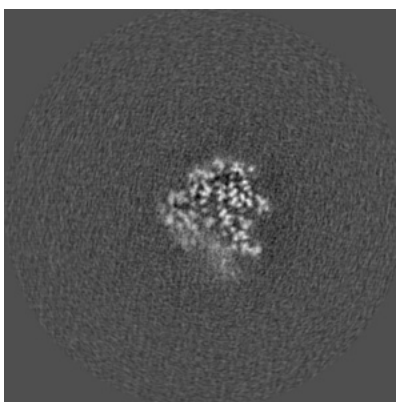


Z Index: 179

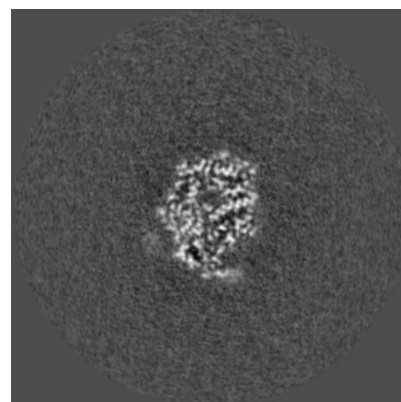
6.3.2 Raw map



X Index: 159



Y Index: 135

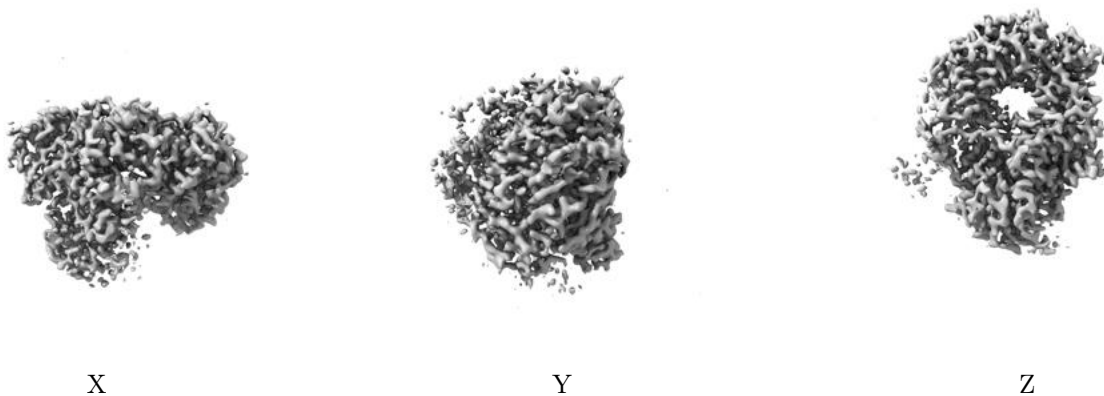


Z Index: 179

The images above show the largest variance slices of the map in three orthogonal directions.

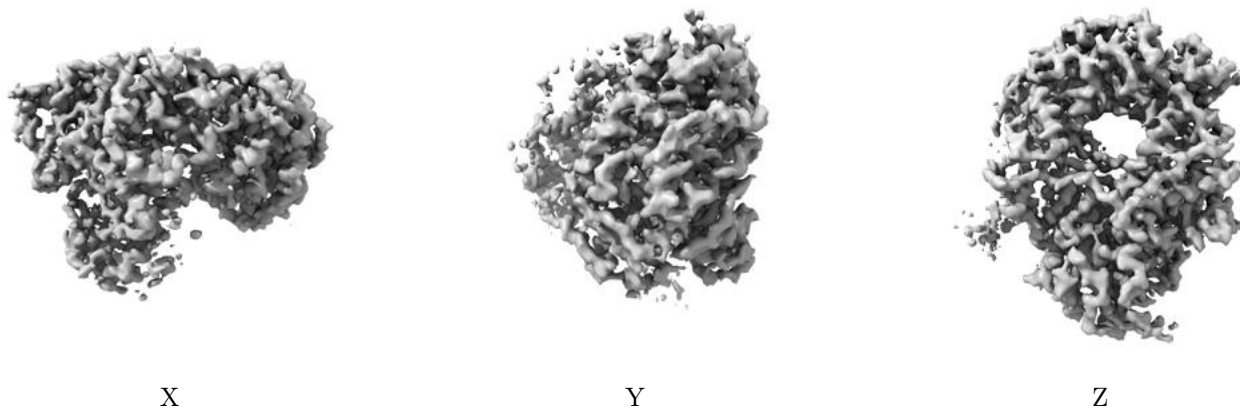
6.4 Orthogonal surface views [i](#)

6.4.1 Primary map



The images above show the 3D surface view of the map at the recommended contour level 0.05. These images, in conjunction with the slice images, may facilitate assessment of whether an appropriate contour level has been provided.

6.4.2 Raw map



These images show the 3D surface of the raw map. The raw map's contour level was selected so that its surface encloses the same volume as the primary map does at its recommended contour level.

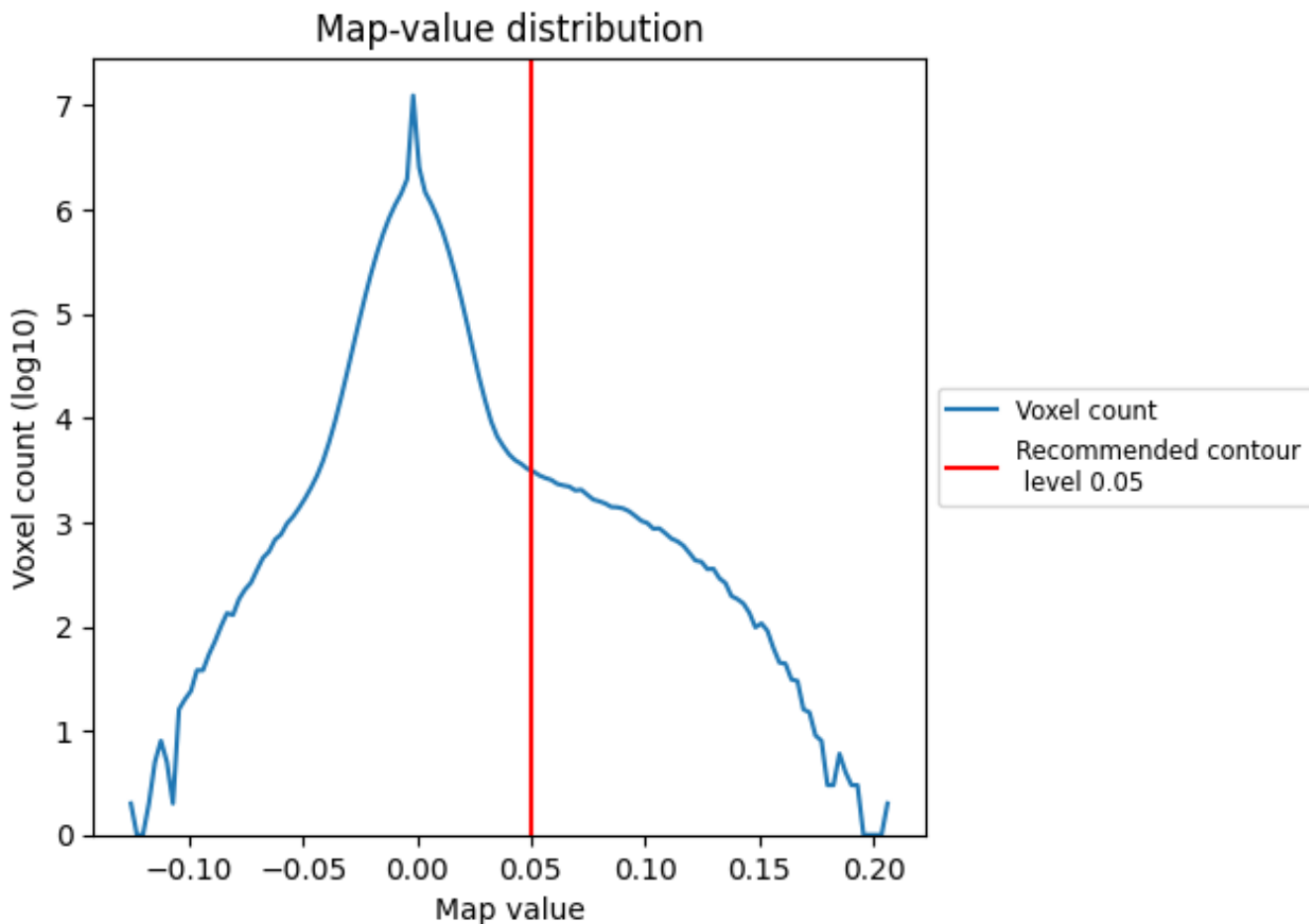
6.5 Mask visualisation [i](#)

This section was not generated. No masks/segmentation were deposited.

7 Map analysis [i](#)

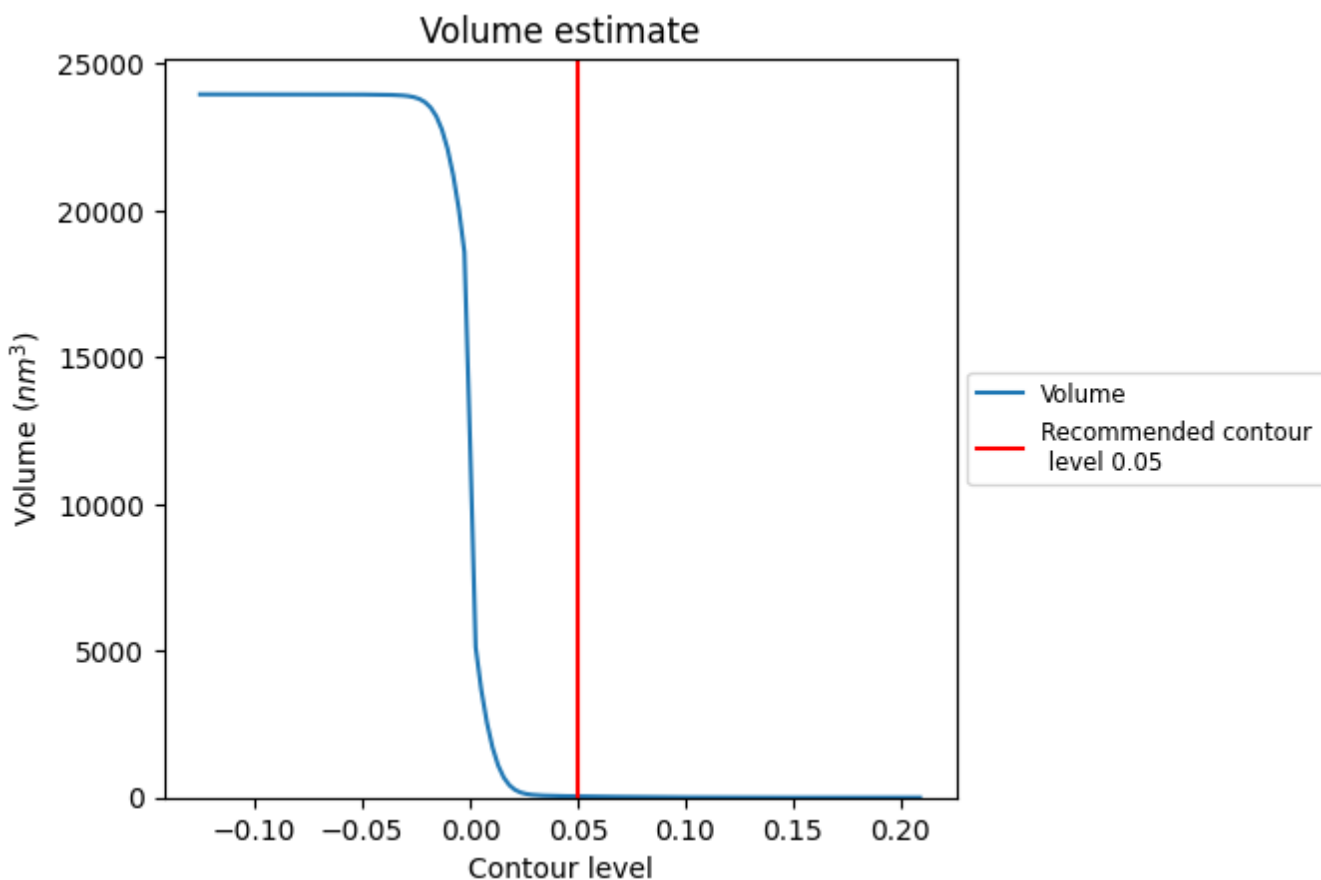
This section contains the results of statistical analysis of the map.

7.1 Map-value distribution [i](#)



The map-value distribution is plotted in 128 intervals along the x-axis. The y-axis is logarithmic. A spike in this graph at zero usually indicates that the volume has been masked.

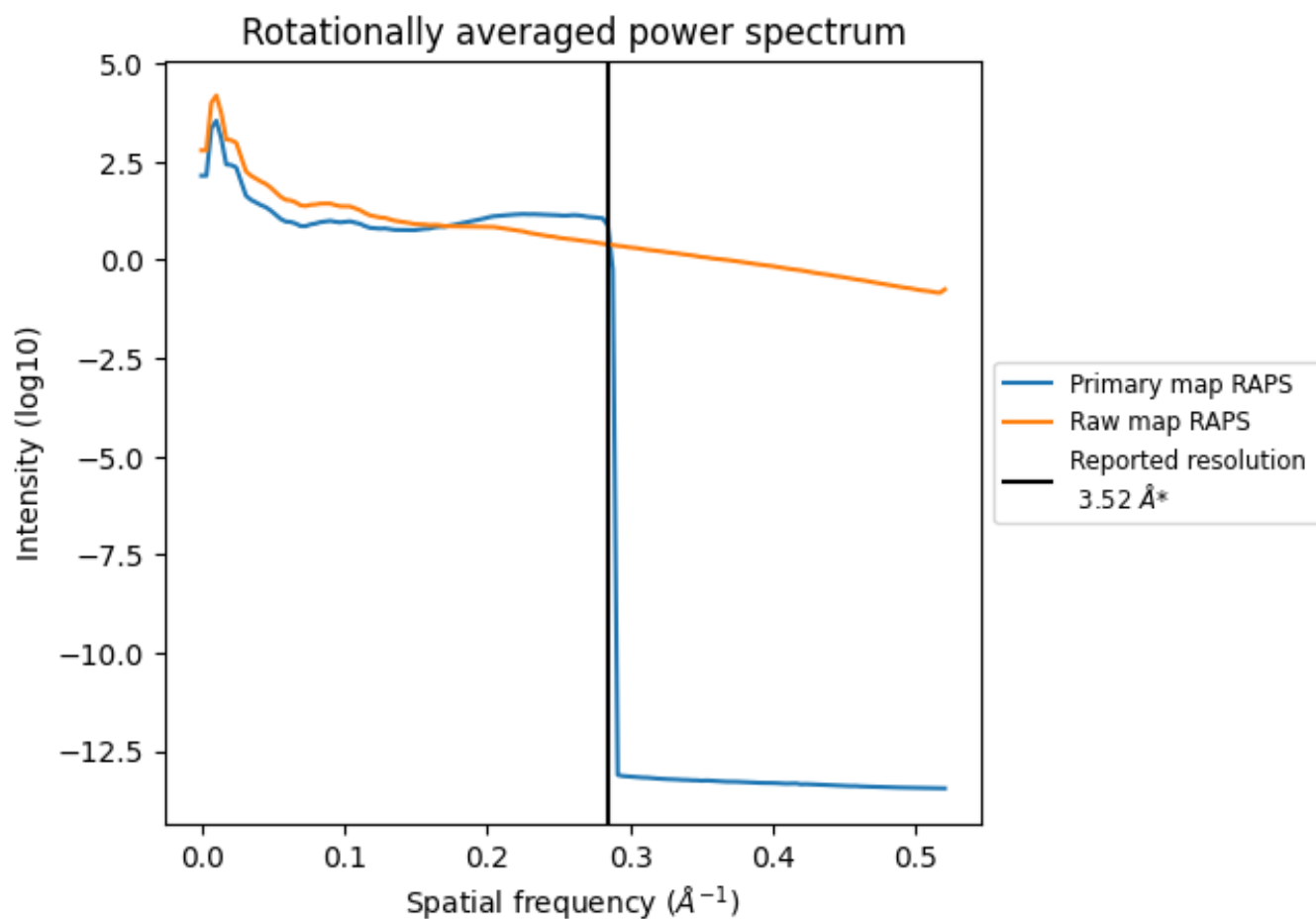
7.2 Volume estimate [i](#)



The volume at the recommended contour level is 41 nm^3 ; this corresponds to an approximate mass of 37 kDa.

The volume estimate graph shows how the enclosed volume varies with the contour level. The recommended contour level is shown as a vertical line and the intersection between the line and the curve gives the volume of the enclosed surface at the given level.

7.3 Rotationally averaged power spectrum [i](#)

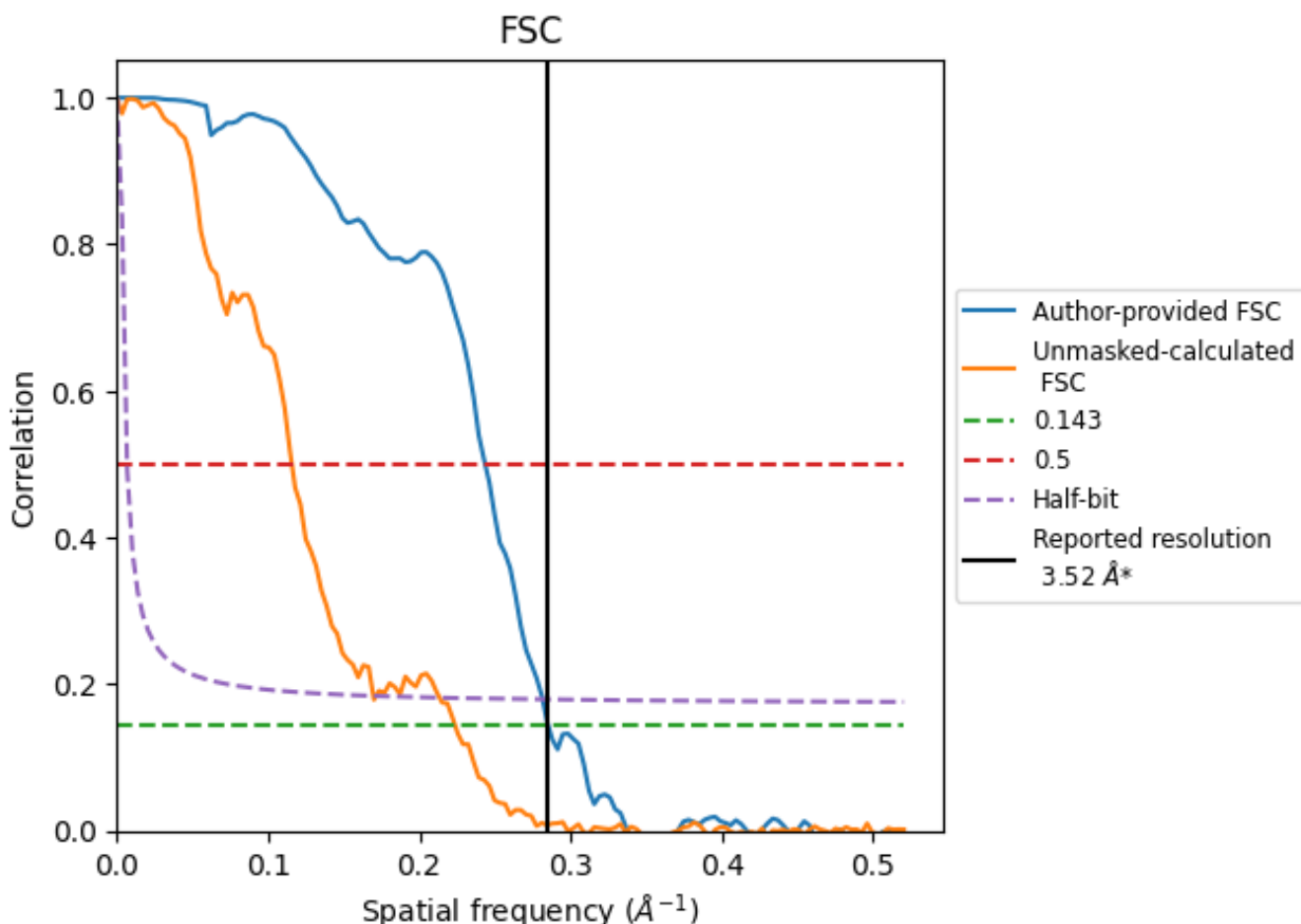


*Reported resolution corresponds to spatial frequency of 0.284 Å⁻¹

8 Fourier-Shell correlation [i](#)

Fourier-Shell Correlation (FSC) is the most commonly used method to estimate the resolution of single-particle and subtomogram-averaged maps. The shape of the curve depends on the imposed symmetry, mask and whether or not the two 3D reconstructions used were processed from a common reference. The reported resolution is shown as a black line. A curve is displayed for the half-bit criterion in addition to lines showing the 0.143 gold standard cut-off and 0.5 cut-off.

8.1 FSC [i](#)



*Reported resolution corresponds to spatial frequency of 0.284 Å⁻¹

8.2 Resolution estimates [i](#)

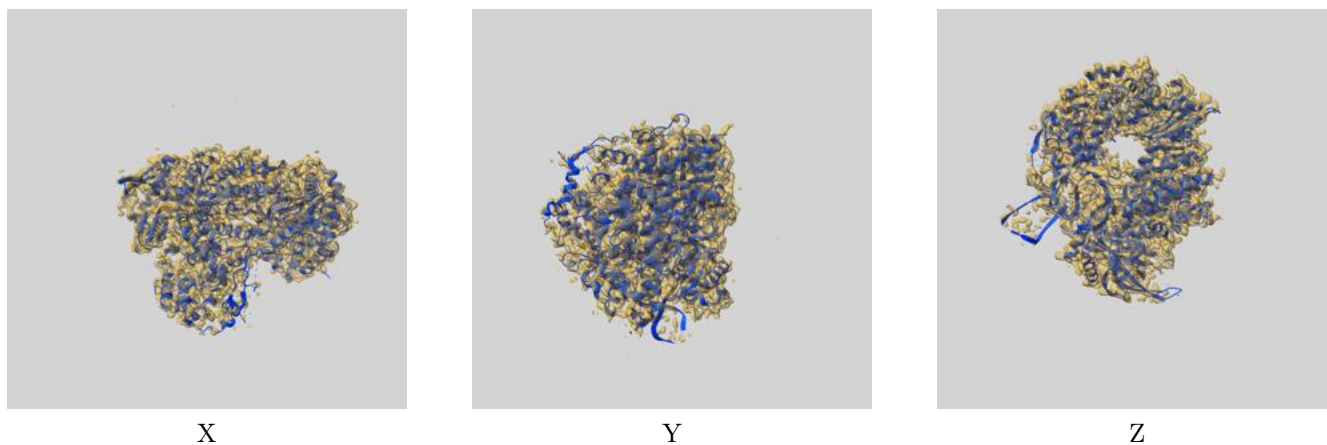
Resolution estimate (Å)	Estimation criterion (FSC cut-off)		
	0.143	0.5	Half-bit
Reported by author	3.52	-	-
Author-provided FSC curve	3.51	4.11	3.55
Unmasked-calculated*	4.47	8.64	5.90

*Resolution estimate based on FSC curve calculated by comparison of deposited half-maps. The value from deposited half-maps intersecting FSC 0.143 CUT-OFF 4.47 differs from the reported value 3.52 by more than 10 %

9 Map-model fit [i](#)

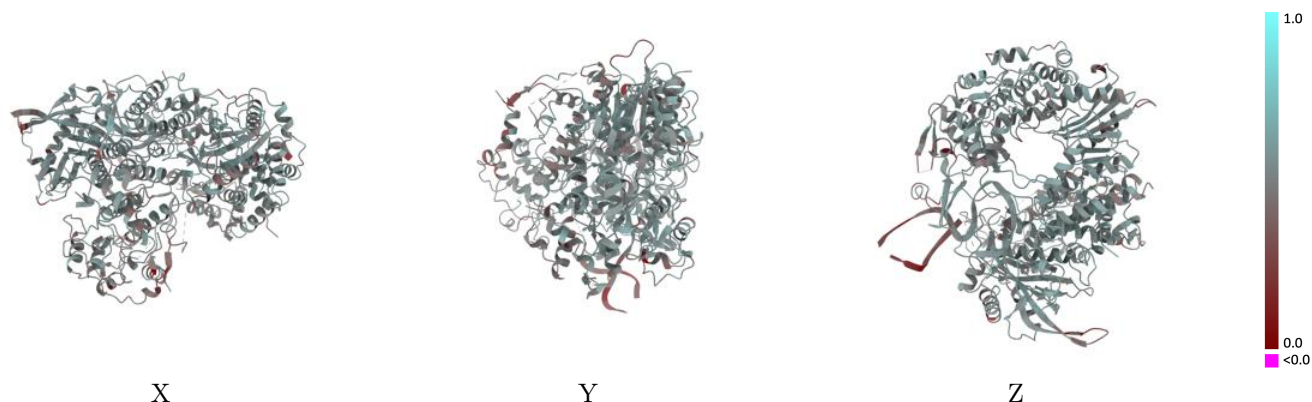
This section contains information regarding the fit between EMDB map EMD-10368 and PDB model 6T2C. Per-residue inclusion information can be found in section 3 on page 7.

9.1 Map-model overlay [i](#)



The images above show the 3D surface view of the map at the recommended contour level 0.05 at 50% transparency in yellow overlaid with a ribbon representation of the model coloured in blue. These images allow for the visual assessment of the quality of fit between the atomic model and the map.

9.2 Q-score mapped to coordinate model [i](#)



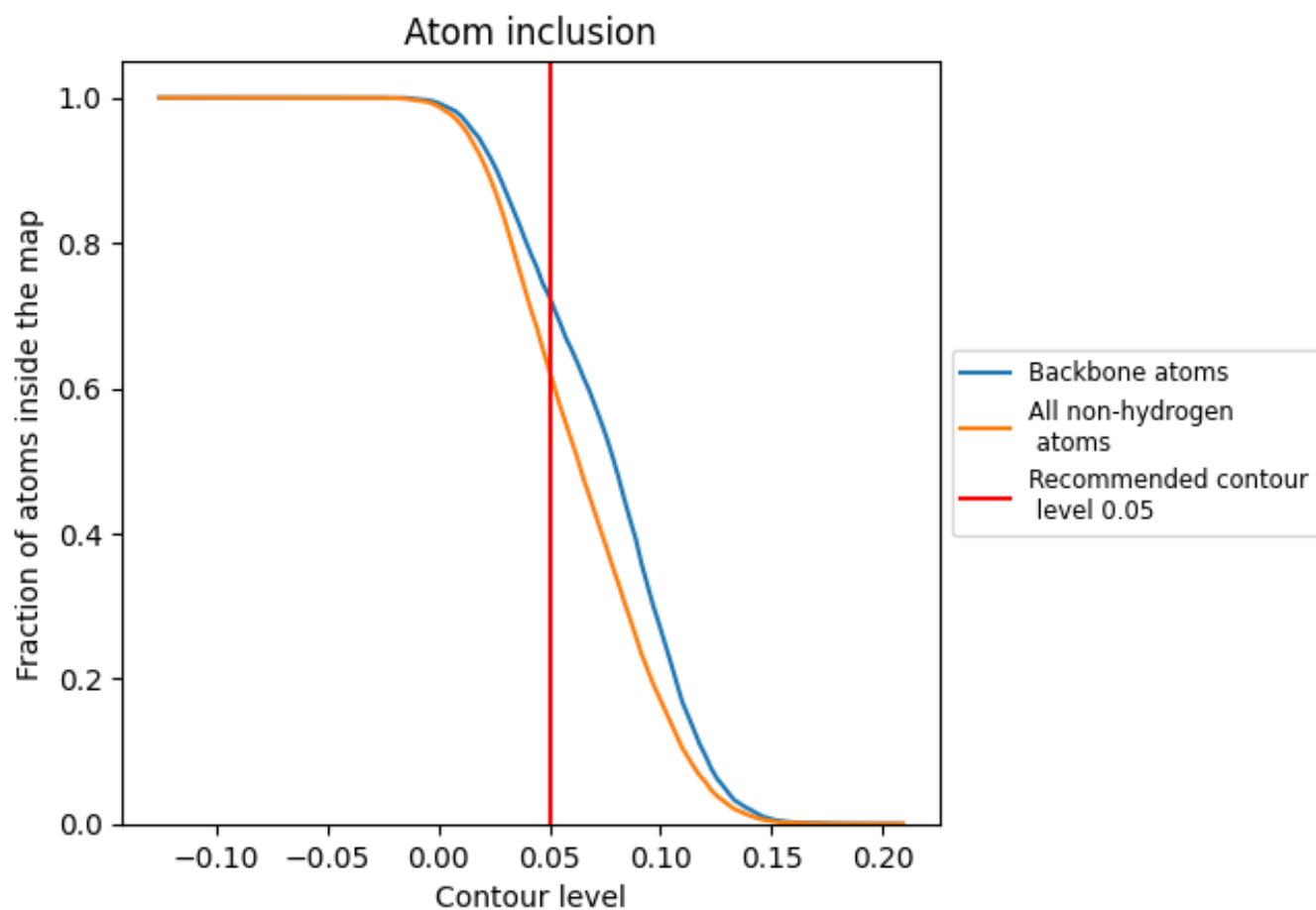
The images above show the model with each residue coloured according to its Q-score. This shows their resolvability in the map with higher Q-score values reflecting better resolvability. Please note: Q-score is calculating the resolvability of atoms, and thus high values are only expected at resolutions at which atoms can be resolved. Low Q-score values may therefore be expected for many entries.

9.3 Atom inclusion mapped to coordinate model [i](#)



The images above show the model with each residue coloured according to its atom inclusion. This shows to what extent they are inside the map at the recommended contour level (0.05).











9.4 Atom inclusion [i](#)



At the recommended contour level, 73% of all backbone atoms, 62% of all non-hydrogen atoms, are inside the map.

9.5 Map-model fit summary [i](#)

The table lists the average atom inclusion at the recommended contour level (0.05) and Q-score for the entire model and for each chain.

Chain	Atom inclusion	Q-score
All	 0.6239	 0.5080
A	 0.6741	 0.5210
B	 0.6511	 0.5160
C	 0.3582	 0.4590
V	 0.4700	 0.4250

