



Full wwPDB EM Validation Report ⓘ

Oct 16, 2023 – 02:32 PM EDT

PDB ID : 8T23
EMDB ID : EMD-40979
Title : Cryo-EM structure of the RBD-ACE2 interface of the SARS-CoV-2 trimeric spike protein bound to ACE2 receptor after local refinement at upRBD conformation
Authors : Ahn, H.M.; Calderon, B.; Fan, X.; Gao, Y.; Horgan, N.; Zhou, B.; Liang, B.
Deposited on : 2023-06-05
Resolution : 3.87 Å(reported)

This is a Full wwPDB EM Validation Report for a publicly released PDB entry.

We welcome your comments at validation@mail.wwpdb.org

A user guide is available at

<https://www.wwpdb.org/validation/2017/EMValidationReportHelp>

with specific help available everywhere you see the ⓘ symbol.

The types of validation reports are described at

<http://www.wwpdb.org/validation/2017/FAQs#types>.

The following versions of software and data (see [references ⓘ](#)) were used in the production of this report:

EMDB validation analysis : 0.0.1.dev70
Mogul : 1.8.5 (274361), CSD as541be (2020)
MolProbity : 4.02b-467
Percentile statistics : 20191225.v01 (using entries in the PDB archive December 25th 2019)
MapQ : 1.9.9
Ideal geometry (proteins) : Engh & Huber (2001)
Ideal geometry (DNA, RNA) : Parkinson et al. (1996)
Validation Pipeline (wwPDB-VP) : 2.36

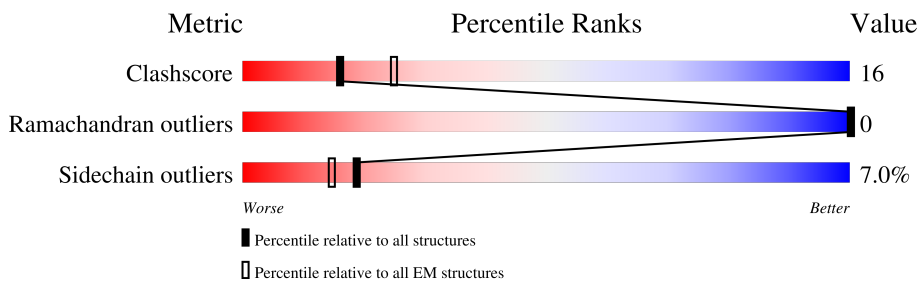
1 Overall quality at a glance

The following experimental techniques were used to determine the structure:

ELECTRON MICROSCOPY

The reported resolution of this entry is 3.87 Å.

Percentile scores (ranging between 0-100) for global validation metrics of the entry are shown in the following graphic. The table shows the number of entries on which the scores are based.



Metric	Whole archive (#Entries)	EM structures (#Entries)
Clashscore	158937	4297
Ramachandran outliers	154571	4023
Sidechain outliers	154315	3826

The table below summarises the geometric issues observed across the polymeric chains and their fit to the map. The red, orange, yellow and green segments of the bar indicate the fraction of residues that contain outliers for ≥ 3 , 2, 1 and 0 types of geometric quality criteria respectively. A grey segment represents the fraction of residues that are not modelled. The numeric value for each fraction is indicated below the corresponding segment, with a dot representing fractions $\leq 5\%$. The upper red bar (where present) indicates the fraction of residues that have poor fit to the EM map (all-atom inclusion $< 40\%$). The numeric value is given above the bar.

Mol	Chain	Length	Quality of chain
1	A	771	
2	B	208	
3	G	2	
4	H	2	

2 Entry composition

There are 5 unique types of molecules in this entry. The entry contains 6451 atoms, of which 0 are hydrogens and 0 are deuteriums.

In the tables below, the AltConf column contains the number of residues with at least one atom in alternate conformation and the Trace column contains the number of residues modelled with at most 2 atoms.

- Molecule 1 is a protein called Angiotensin-converting enzyme.

Mol	Chain	Residues	Atoms					AltConf	Trace
			Total	C	N	O	S		
1	A	596	4904	3133	824	918	29	0	0

There are 32 discrepancies between the modelled and reference sequences:

Chain	Residue	Modelled	Actual	Comment	Reference
A	740	GLY	-	expression tag	UNP A0A7T0Q2W2
A	741	SER	-	expression tag	UNP A0A7T0Q2W2
A	742	GLY	-	expression tag	UNP A0A7T0Q2W2
A	743	SER	-	expression tag	UNP A0A7T0Q2W2
A	744	GLY	-	expression tag	UNP A0A7T0Q2W2
A	745	SER	-	expression tag	UNP A0A7T0Q2W2
A	746	GLY	-	expression tag	UNP A0A7T0Q2W2
A	747	HIS	-	expression tag	UNP A0A7T0Q2W2
A	748	HIS	-	expression tag	UNP A0A7T0Q2W2
A	749	HIS	-	expression tag	UNP A0A7T0Q2W2
A	750	HIS	-	expression tag	UNP A0A7T0Q2W2
A	751	HIS	-	expression tag	UNP A0A7T0Q2W2
A	752	HIS	-	expression tag	UNP A0A7T0Q2W2
A	753	GLY	-	expression tag	UNP A0A7T0Q2W2
A	754	SER	-	expression tag	UNP A0A7T0Q2W2
A	755	GLY	-	expression tag	UNP A0A7T0Q2W2
A	756	SER	-	expression tag	UNP A0A7T0Q2W2
A	757	GLY	-	expression tag	UNP A0A7T0Q2W2
A	758	LEU	-	expression tag	UNP A0A7T0Q2W2
A	759	ASN	-	expression tag	UNP A0A7T0Q2W2
A	760	ASP	-	expression tag	UNP A0A7T0Q2W2
A	761	ILE	-	expression tag	UNP A0A7T0Q2W2
A	762	PHE	-	expression tag	UNP A0A7T0Q2W2
A	763	GLU	-	expression tag	UNP A0A7T0Q2W2
A	764	ALA	-	expression tag	UNP A0A7T0Q2W2
A	765	GLN	-	expression tag	UNP A0A7T0Q2W2
A	766	LYS	-	expression tag	UNP A0A7T0Q2W2
A	767	ILE	-	expression tag	UNP A0A7T0Q2W2

Continued on next page...

Continued from previous page...

Chain	Residue	Modelled	Actual	Comment	Reference
A	768	GLU	-	expression tag	UNP A0A7T0Q2W2
A	769	TRP	-	expression tag	UNP A0A7T0Q2W2
A	770	HIS	-	expression tag	UNP A0A7T0Q2W2
A	771	GLU	-	expression tag	UNP A0A7T0Q2W2

- Molecule 2 is a protein called Spike glycoprotein.

Mol	Chain	Residues	Atoms					AltConf	Trace
			Total	C	N	O	S		
2	B	185	1467	942	246	271	8	0	0

There is a discrepancy between the modelled and reference sequences:

Chain	Residue	Modelled	Actual	Comment	Reference
B	453	PHE	TYR	variant	UNP P0DTC2

- Molecule 3 is an oligosaccharide called 2-acetamido-2-deoxy-beta-D-glucopyranose-(1-4)-2-acetamido-2-deoxy-beta-D-glucopyranose.



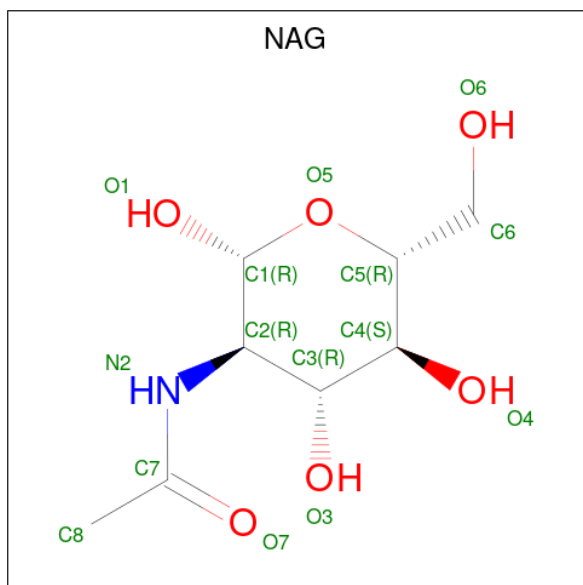
Mol	Chain	Residues	Atoms				AltConf	Trace
			Total	C	N	O		
3	G	2	28	16	2	10	0	0

- Molecule 4 is an oligosaccharide called alpha-L-fucopyranose-(1-6)-2-acetamido-2-deoxy-beta-D-glucopyranose.



Mol	Chain	Residues	Atoms				AltConf	Trace
			Total	C	N	O		
4	H	2	24	14	1	9	0	0

- Molecule 5 is 2-acetamido-2-deoxy-beta-D-glucopyranose (three-letter code: NAG) (formula: C₈H₁₅NO₆).



Mol	Chain	Residues	Atoms				AltConf
			Total	C	N	O	
5	A	1	Total	C	N	O	0
			14	8	1	5	
5	B	1	Total	C	N	O	0
			14	8	1	5	

3 Residue-property plots

These plots are drawn for all protein, RNA, DNA and oligosaccharide chains in the entry. The first graphic for a chain summarises the proportions of the various outlier classes displayed in the second graphic. The second graphic shows the sequence view annotated by issues in geometry and atom inclusion in map density. Residues are color-coded according to the number of geometric quality criteria for which they contain at least one outlier: green = 0, yellow = 1, orange = 2 and red = 3 or more. A red diamond above a residue indicates a poor fit to the EM map for this residue (all-atom inclusion < 40%). Stretches of 2 or more consecutive residues without any outlier are shown as a green connector. Residues present in the sample, but not in the model, are shown in grey.

• Molecule 1: Angiotensin-converting enzyme



LYS	SER	ALA	LEU	GLY	LYS	ALA	TYR	GLU	TRP	ILE	TRP	ASN	ASP	ASN	GLU	MET	TYR	PHE	PHE	GLN	SER	ILE	ALA	TYR	ALA	MET	GLU	PHE	LYS	VAL	LYS	GLN	THR	ILE	PRO	PHE	LEU	GLY	VAL	ASP	LEU	PRO	PRO	ARG	VAL	ILE	SER	PHE	ASN	PHE	ILE	GLY							
VAL	THR	SER	PRO	LEU	GLY	ASN	MET	SER	ASP	ILE	GLU	TRP	ASN	ARG	ALA	ASN	ASP	VAL	GLU	PHE	GLU	ALA	ILE	ARG	GLY	ARG	ALA	MET	ILE	ASN	ASP	ALA	TYR	PHE	ARG	LEU	ASP	LYS	VAL	ARG	VAL	GLU	VAL	SER	PRO	ASP	LEU	GLN	PRO	PRO	ARG	VAL	ILE	SER	PHE	ASN	PHE	ILE	GLY
SER	GLY	HIS	HIS	HIS	HIS	HIS	HIS	GLY	SER	GLY	GLY	SER	GLY	GLY	LEU	ASN	ASP	ASP	PHE	ILE	GLU	GLU	ALA	GLN	ILE	ARG	ARG	GLY	TRP	HIS	GLU	D864	Y365	SER	VAL	LEU	TYR	ASN	SER	SER	ALA	ALA	SER	PHE	S375	K378	C379	Y380	P384	T385	K386	L387	F392	V395	D398	S399			

• Molecule 2: Spike glycoprotein



GLN	PRO	THR	GLU	SER	ILE	VAL	ARG	ARG	PHE	ILE	PRO	ASN	ILE	THR	ASN	L335	R346	F347	K348	S349	V350	Y351	A352	W353	N354	R355	K356	R357	I358	S359	N360	D364	Y365	SER	VAL	LEU	TYR	ASN	SER	SER	ALA	ALA	SER	PHE	S375	K378	C379	Y380	P384	T385	K386	L387	F392	V395	D398	S399
F400	A411	P412	G413	Q414	K417	I418	A419	D420	Y421	L425	P426	F429	T430	M437	S438	M439	K444	Y451	L452	R457	M460	L461	K462	P463	R466	D467	I472	Y473	Q474	A475	P479	E484	G485	F486	M487	C488	Y489	S494	Y495	G496	F497	Q498	P499	P507												
Y508	F515	E516	L517	L518	H519	A522	T523	V524	C525	G526	F527	K528																																												

• Molecule 3: 2-acetamido-2-deoxy-beta-D-glucopyranose-(1-4)-2-acetamido-2-deoxy-beta-D-glucopyranose



MAG1	MAG2
------	------

• Molecule 4: alpha-L-fucopyranose-(1-6)-2-acetamido-2-deoxy-beta-D-glucopyranose



MAG1	FUC2
------	------

4 Experimental information

Property	Value	Source
EM reconstruction method	SINGLE PARTICLE	Depositor
Imposed symmetry	POINT, Not provided	
Number of particles used	512722	Depositor
Resolution determination method	FSC 0.143 CUT-OFF	Depositor
CTF correction method	PHASE FLIPPING AND AMPLITUDE CORRECTION	Depositor
Microscope	FEI TITAN KRIOS	Depositor
Voltage (kV)	300	Depositor
Electron dose ($e^-/\text{\AA}^2$)	49.98	Depositor
Minimum defocus (nm)	750	Depositor
Maximum defocus (nm)	1750	Depositor
Magnification	81000	Depositor
Image detector	GATAN K3 (6k x 4k)	Depositor
Maximum map value	2.243	Depositor
Minimum map value	-2.099	Depositor
Average map value	-0.001	Depositor
Map value standard deviation	0.019	Depositor
Recommended contour level	0.3	Depositor
Map size (\AA)	568.32, 568.32, 568.32	wwPDB
Map dimensions	512, 512, 512	wwPDB
Map angles ($^\circ$)	90.0, 90.0, 90.0	wwPDB
Pixel spacing (\AA)	1.11, 1.11, 1.11	Depositor

5 Model quality [i](#)

5.1 Standard geometry [i](#)

Bond lengths and bond angles in the following residue types are not validated in this section: FUC, NAG

The Z score for a bond length (or angle) is the number of standard deviations the observed value is removed from the expected value. A bond length (or angle) with $|Z| > 5$ is considered an outlier worth inspection. RMSZ is the root-mean-square of all Z scores of the bond lengths (or angles).

Mol	Chain	Bond lengths		Bond angles	
		RMSZ	# Z >5	RMSZ	# Z >5
1	A	0.28	0/5047	0.62	5/6854 (0.1%)
2	B	0.26	0/1508	0.58	1/2049 (0.0%)
All	All	0.27	0/6555	0.61	6/8903 (0.1%)

There are no bond length outliers.

All (6) bond angle outliers are listed below:

Mol	Chain	Res	Type	Atoms	Z	Observed(°)	Ideal(°)
1	A	389	PRO	CA-N-CD	-11.59	95.27	111.50
1	A	45	LEU	CA-CB-CG	7.39	132.29	115.30
1	A	320	LEU	CA-CB-CG	6.02	129.14	115.30
1	A	389	PRO	N-CD-CG	-5.77	94.54	103.20
2	B	517	LEU	CA-CB-CG	5.65	128.29	115.30
1	A	595	LEU	CA-CB-CG	5.17	127.19	115.30

There are no chirality outliers.

There are no planarity outliers.

5.2 Too-close contacts [i](#)

In the following table, the Non-H and H(model) columns list the number of non-hydrogen atoms and hydrogen atoms in the chain respectively. The H(added) column lists the number of hydrogen atoms added and optimized by MolProbity. The Clashes column lists the number of clashes within the asymmetric unit, whereas Symm-Clashes lists symmetry-related clashes.

Mol	Chain	Non-H	H(model)	H(added)	Clashes	Symm-Clashes
1	A	4904	0	4663	162	0
2	B	1467	0	1396	40	0
3	G	28	0	25	0	0

Continued on next page...

Continued from previous page...

Mol	Chain	Non-H	H(model)	H(added)	Clashes	Symm-Clashes
4	H	24	0	22	0	0
5	A	14	0	13	0	0
5	B	14	0	13	0	0
All	All	6451	0	6132	201	0

The all-atom clashscore is defined as the number of clashes found per 1000 atoms (including hydrogen atoms). The all-atom clashscore for this structure is 16.

All (201) close contacts within the same asymmetric unit are listed below, sorted by their clash magnitude.

Atom-1	Atom-2	Interatomic distance (Å)	Clash overlap (Å)
1:A:320:LEU:HD12	1:A:321:PRO:HD2	1.59	0.83
1:A:392:LEU:HD23	1:A:562:ARG:H	1.44	0.83
1:A:91:PRO:HA	1:A:94:LYS:HD3	1.64	0.78
1:A:28:PHE:HA	1:A:31:LYS:HE2	1.67	0.76
1:A:316:VAL:HG13	1:A:320:LEU:HG	1.68	0.74
2:B:353:TRP:HH2	2:B:466:ARG:HB2	1.53	0.73
2:B:358:ILE:HG13	2:B:395:VAL:HG11	1.71	0.71
1:A:204:ARG:HA	1:A:513:ILE:HA	1.71	0.71
1:A:305:ARG:O	1:A:309:LYS:NZ	2.23	0.70
1:A:524:GLN:HG3	1:A:579:MET:HA	1.71	0.70
2:B:355:ARG:NH2	2:B:398:ASP:OD2	2.24	0.70
1:A:381:TYR:HB2	1:A:558:LEU:HD13	1.74	0.69
1:A:303:ASP:O	1:A:306:ARG:NH1	2.27	0.67
2:B:412:PRO:HG2	2:B:429:PHE:HB2	1.76	0.67
1:A:376:MET:HA	1:A:379:ILE:HG22	1.76	0.67
1:A:41:TYR:O	1:A:45:LEU:HD12	1.95	0.66
1:A:478:TRP:HA	1:A:481:LYS:HE2	1.78	0.66
1:A:326:GLY:HA2	1:A:329:GLN:HE21	1.61	0.66
1:A:310:GLU:OE2	1:A:417:HIS:NE2	2.30	0.65
1:A:535:HIS:CE1	1:A:541:LYS:HB3	2.31	0.65
1:A:113:ARG:O	1:A:117:ASN:ND2	2.30	0.64
1:A:52:THR:HA	1:A:342:VAL:HG12	1.80	0.64
1:A:418:LEU:HD23	1:A:421:ILE:HD11	1.79	0.64
1:A:460:ARG:HA	1:A:463:VAL:HG22	1.80	0.63
1:A:201:ASP:O	1:A:205:GLY:C	2.37	0.62
1:A:598:GLN:O	1:A:600:ARG:NH1	2.30	0.62
1:A:288:LYS:NZ	1:A:437:ASN:OD1	2.32	0.62
2:B:421:TYR:HE1	2:B:457:ARG:HB3	1.63	0.62
1:A:203:TRP:HD1	1:A:204:ARG:HG3	1.64	0.62
1:A:574:VAL:HG23	1:A:576:ALA:H	1.63	0.62

Continued on next page...

Continued from previous page...

Atom-1	Atom-2	Interatomic distance (Å)	Clash overlap (Å)
1:A:335:GLU:H	1:A:362:THR:HG22	1.65	0.62
1:A:372:ALA:O	1:A:376:MET:HG2	2.00	0.62
1:A:388:GLN:HB3	1:A:392:LEU:HD13	1.81	0.61
1:A:180:TYR:OH	1:A:496:THR:O	2.14	0.61
1:A:238:GLU:HA	1:A:604:VAL:HG11	1.83	0.61
1:A:238:GLU:HG2	1:A:604:VAL:HG21	1.82	0.60
1:A:143:LEU:HD12	1:A:145:GLU:H	1.67	0.59
1:A:312:GLU:O	1:A:316:VAL:HG23	2.03	0.59
1:A:222:LEU:HB3	1:A:520:ILE:HG21	1.85	0.58
1:A:168:TRP:O	1:A:173:GLY:N	2.31	0.58
1:A:330:ASN:HB3	1:A:357:ARG:HD2	1.84	0.58
2:B:346:ARG:NH1	2:B:347:PHE:O	2.37	0.58
1:A:477:TRP:O	1:A:481:LYS:HG3	2.05	0.57
1:A:370:LEU:HB2	1:A:409:SER:HB3	1.88	0.56
1:A:287:GLN:OE1	1:A:287:GLN:N	2.39	0.56
1:A:312:GLU:HG3	1:A:316:VAL:HG21	1.88	0.56
2:B:412:PRO:O	2:B:414:GLN:NE2	2.39	0.56
1:A:251:ALA:HA	1:A:281:LEU:HD22	1.88	0.55
1:A:455:MET:SD	1:A:455:MET:N	2.79	0.55
1:A:74:GLU:O	1:A:78:GLN:HG2	2.06	0.55
2:B:351:TYR:OH	2:B:467:ASP:O	2.25	0.54
1:A:90:ASP:O	1:A:94:LYS:HG3	2.07	0.54
1:A:431:ASP:OD1	1:A:432:SER:N	2.40	0.54
1:A:302:TRP:HE1	1:A:417:HIS:CE1	2.26	0.53
1:A:530:CYS:HA	1:A:533:ALA:HB3	1.89	0.53
1:A:535:HIS:HE1	1:A:541:LYS:HB3	1.73	0.53
1:A:479:GLU:N	1:A:479:GLU:OE1	2.39	0.53
1:A:309:LYS:N	1:A:309:LYS:HD3	2.22	0.53
2:B:364:ASP:OD1	2:B:365:TYR:N	2.42	0.53
1:A:61:LYS:HG2	1:A:62:MET:N	2.23	0.53
1:A:400:PHE:O	1:A:404:VAL:HG13	2.09	0.53
1:A:150:ASP:HB2	1:A:154:ASN:ND2	2.24	0.53
1:A:158:TYR:HE1	1:A:266:LEU:HD21	1.73	0.53
2:B:462:LYS:HG2	2:B:463:PRO:HD2	1.91	0.53
1:A:290:ASN:OD1	1:A:291:ILE:N	2.41	0.53
2:B:525:CYS:SG	2:B:526:GLY:N	2.82	0.53
1:A:336:PRO:HB2	1:A:341:LYS:HD3	1.91	0.52
1:A:419:LYS:HG3	1:A:426:PRO:HB3	1.90	0.52
1:A:176:LEU:HB2	1:A:177:ARG:NH2	2.24	0.52
1:A:27:THR:HG21	2:B:489:TYR:CZ	2.45	0.52
2:B:384:PRO:HA	2:B:387:LEU:HD23	1.90	0.52

Continued on next page...

Continued from previous page...

Atom-1	Atom-2	Interatomic distance (Å)	Clash overlap (Å)
1:A:318:VAL:HG22	1:A:548:ARG:HH12	1.74	0.52
1:A:136:ASN:OD1	1:A:136:ASN:N	2.43	0.51
1:A:481:LYS:HD2	1:A:487:VAL:HB	1.90	0.51
1:A:180:TYR:OH	1:A:498:CYS:N	2.35	0.51
1:A:391:LEU:HD12	1:A:392:LEU:HG	1.92	0.51
1:A:407:ILE:H	1:A:407:ILE:HD12	1.75	0.51
1:A:56:ASP:HA	1:A:59:ILE:HG12	1.93	0.51
1:A:388:GLN:HB2	1:A:393:ARG:NH1	2.26	0.50
1:A:240:LEU:O	1:A:244:VAL:HG13	2.10	0.50
1:A:323:MET:N	1:A:323:MET:SD	2.85	0.50
1:A:526:GLN:N	1:A:526:GLN:OE1	2.45	0.50
1:A:570:LEU:O	1:A:574:VAL:HG22	2.12	0.50
1:A:320:LEU:HD12	1:A:321:PRO:CD	2.37	0.49
2:B:355:ARG:HG3	2:B:357:ARG:CZ	2.43	0.49
1:A:116:LEU:O	1:A:119:ILE:HG13	2.12	0.49
1:A:514:ARG:HH21	1:A:518:ARG:H	1.61	0.49
1:A:560:LEU:HD13	1:A:569:ALA:HB2	1.95	0.48
1:A:388:GLN:HB2	1:A:393:ARG:HH12	1.78	0.48
1:A:158:TYR:OH	1:A:255:ARG:NH1	2.46	0.48
1:A:557:MET:HB2	1:A:572:ARG:HE	1.79	0.48
1:A:551:GLY:O	1:A:555:HIS:ND1	2.47	0.48
1:A:227:GLU:O	1:A:231:THR:HG23	2.14	0.48
1:A:271:TRP:NE1	1:A:273:ARG:HB2	2.29	0.48
2:B:485:GLY:N	2:B:488:CYS:O	2.46	0.48
1:A:191:ALA:O	1:A:194:ASN:ND2	2.33	0.48
2:B:495:TYR:HB3	2:B:497:PHE:CE1	2.49	0.48
1:A:463:VAL:HG12	1:A:468:ILE:HD13	1.94	0.48
1:A:150:ASP:OD2	1:A:150:ASP:N	2.48	0.47
1:A:168:TRP:NE1	1:A:270:MET:HG2	2.30	0.47
1:A:108:LEU:HD12	1:A:113:ARG:HD3	1.95	0.47
1:A:363:LYS:HE3	1:A:365:THR:HG23	1.97	0.47
1:A:404:VAL:O	1:A:408:MET:HE2	2.15	0.47
1:A:125:THR:O	1:A:129:THR:HG23	2.15	0.47
1:A:332:MET:CE	1:A:333:LEU:H	2.28	0.47
2:B:378:LYS:HD2	2:B:379:CYS:N	2.30	0.47
1:A:335:GLU:HB3	1:A:361:CYS:HB3	1.98	0.46
1:A:482:ARG:NH1	1:A:483:ASP:OD2	2.48	0.46
2:B:392:PHE:O	2:B:522:ALA:HA	2.15	0.46
1:A:26:LYS:O	1:A:30:GLU:HG2	2.15	0.46
1:A:482:ARG:HH11	1:A:483:ASP:HA	1.80	0.46
1:A:41:TYR:CZ	1:A:45:LEU:HD11	2.50	0.46

Continued on next page...

Continued from previous page...

Atom-1	Atom-2	Interatomic distance (Å)	Clash overlap (Å)
1:A:303:ASP:H	1:A:306:ARG:NH2	2.13	0.46
1:A:177:ARG:O	1:A:180:TYR:N	2.45	0.46
1:A:326:GLY:O	1:A:329:GLN:NE2	2.48	0.46
1:A:390:PHE:O	1:A:393:ARG:HG2	2.15	0.46
1:A:530:CYS:SG	1:A:535:HIS:HB3	2.56	0.46
1:A:212:ALA:O	1:A:213:ASP:OD2	2.34	0.46
1:A:80:ALA:O	1:A:101:GLN:NE2	2.49	0.45
1:A:115:ARG:O	1:A:119:ILE:HG12	2.17	0.45
1:A:535:HIS:HD2	1:A:536:GLU:N	2.14	0.45
1:A:41:TYR:CE2	1:A:45:LEU:HD11	2.51	0.45
2:B:355:ARG:HG3	2:B:357:ARG:NH1	2.31	0.45
2:B:430:THR:HG22	2:B:515:PHE:CE2	2.51	0.45
1:A:383:MET:HA	1:A:386:ALA:HB2	1.97	0.45
1:A:535:HIS:CD2	1:A:537:GLY:H	2.35	0.45
2:B:353:TRP:CH2	2:B:466:ARG:HB2	2.41	0.45
1:A:326:GLY:CA	1:A:329:GLN:HE21	2.30	0.44
1:A:164:ALA:O	1:A:168:TRP:HD1	2.00	0.44
1:A:325:GLU:HA	1:A:328:TRP:HD1	1.81	0.44
2:B:517:LEU:HD12	2:B:517:LEU:O	2.17	0.44
1:A:293:VAL:HG21	1:A:365:THR:HA	2.00	0.44
2:B:494:SER:OG	2:B:495:TYR:N	2.51	0.44
1:A:127:TYR:HE2	1:A:504:PHE:HA	1.83	0.44
2:B:430:THR:HG22	2:B:515:PHE:HE2	1.82	0.44
2:B:472:ILE:HD11	2:B:488:CYS:HB3	2.00	0.44
1:A:385:TYR:O	1:A:393:ARG:NH2	2.47	0.43
1:A:383:MET:SD	1:A:383:MET:N	2.92	0.43
1:A:541:LYS:O	1:A:541:LYS:HD3	2.19	0.43
1:A:371:THR:O	1:A:375:GLU:HG2	2.17	0.43
2:B:444:LYS:O	2:B:499:PRO:HD3	2.18	0.43
1:A:252:TYR:HB2	1:A:256:ILE:HD13	1.99	0.43
1:A:51:ASN:HD21	1:A:349:TRP:HZ2	1.66	0.43
1:A:201:ASP:O	1:A:205:GLY:CA	2.66	0.43
1:A:547:SER:OG	1:A:549:GLU:HG3	2.18	0.43
1:A:333:LEU:O	1:A:362:THR:HB	2.19	0.43
1:A:303:ASP:OD1	1:A:305:ARG:HG2	2.19	0.43
1:A:378:HIS:ND1	1:A:381:TYR:HE2	2.17	0.43
1:A:378:HIS:HA	1:A:381:TYR:CD2	2.54	0.43
1:A:108:LEU:HB2	1:A:113:ARG:HD3	2.01	0.43
1:A:404:VAL:O	1:A:408:MET:HG2	2.18	0.43
2:B:387:LEU:HD13	2:B:392:PHE:CZ	2.54	0.43
1:A:116:LEU:O	1:A:120:LEU:HG	2.19	0.42

Continued on next page...

Continued from previous page...

Atom-1	Atom-2	Interatomic distance (Å)	Clash overlap (Å)
1:A:312:GLU:OE2	1:A:313:LYS:NZ	2.44	0.42
1:A:550:ALA:HA	1:A:553:LYS:HD2	2.00	0.42
1:A:582:ARG:N	1:A:583:PRO:HD2	2.33	0.42
2:B:349:SER:OG	2:B:350:VAL:N	2.52	0.42
2:B:351:TYR:HB2	2:B:452:LEU:HD21	2.00	0.42
2:B:439:ASN:HA	2:B:507:PRO:HG2	1.99	0.42
2:B:473:TYR:O	2:B:488:CYS:HA	2.20	0.42
1:A:23:ASP:HA	1:A:26:LYS:HD2	2.01	0.42
1:A:156:LYS:HE2	1:A:156:LYS:HB2	1.90	0.42
1:A:87:GLU:O	1:A:88:ILE:HD13	2.19	0.42
1:A:158:TYR:CZ	1:A:162:LEU:HD22	2.55	0.42
1:A:468:ILE:HA	1:A:469:PRO:HD3	1.93	0.42
1:A:239:HIS:ND1	1:A:599:ASN:HB3	2.34	0.41
1:A:462:MET:HA	1:A:465:LYS:HE2	2.02	0.41
1:A:94:LYS:HA	1:A:97:LEU:HD23	2.02	0.41
2:B:437:ASN:HB3	2:B:508:TYR:CZ	2.55	0.41
2:B:451:TYR:O	2:B:494:SER:HA	2.20	0.41
1:A:85:LEU:O	1:A:88:ILE:HG12	2.20	0.41
1:A:98:ARG:CZ	1:A:102:GLN:HB2	2.50	0.41
1:A:407:ILE:HB	1:A:408:MET:HE1	2.01	0.41
1:A:148:LEU:HD11	1:A:161:ARG:HA	2.02	0.41
1:A:305:ARG:HG2	1:A:305:ARG:H	1.71	0.41
1:A:41:TYR:O	1:A:44:SER:OG	2.27	0.41
1:A:597:GLU:N	1:A:597:GLU:OE2	2.53	0.41
1:A:206:ASP:H	1:A:513:ILE:HD11	1.85	0.41
2:B:486:PHE:O	2:B:487:ASN:HB3	2.21	0.41
1:A:549:GLU:O	1:A:553:LYS:HB3	2.20	0.41
2:B:360:ASN:HA	2:B:523:THR:HG22	2.03	0.41
1:A:56:ASP:OD1	1:A:56:ASP:N	2.53	0.41
1:A:61:LYS:HG2	1:A:62:MET:SD	2.61	0.41
1:A:279:TYR:O	1:A:281:LEU:N	2.51	0.41
1:A:306:ARG:O	1:A:310:GLU:HG2	2.21	0.41
1:A:527:GLU:HA	1:A:583:PRO:HD3	2.03	0.41
2:B:417:LYS:HG2	2:B:421:TYR:HD2	1.86	0.41
1:A:533:ALA:HA	1:A:549:GLU:OE1	2.21	0.41
2:B:411:ALA:O	2:B:414:GLN:HG2	2.21	0.41
1:A:50:TYR:CE2	1:A:59:ILE:HA	2.56	0.40
1:A:278:LEU:HA	1:A:278:LEU:HD12	1.86	0.40
1:A:398:GLU:HA	1:A:401:HIS:ND1	2.36	0.40
1:A:539:LEU:HD12	1:A:539:LEU:O	2.21	0.40
2:B:462:LYS:HD3	2:B:463:PRO:O	2.21	0.40

Continued on next page...

Continued from previous page...

Atom-1	Atom-2	Interatomic distance (Å)	Clash overlap (Å)
1:A:239:HIS:HB2	1:A:596:LYS:NZ	2.36	0.40
2:B:354:ASN:HD21	2:B:356:LYS:HD3	1.86	0.40
1:A:90:ASP:OD1	1:A:93:ILE:HG12	2.21	0.40
1:A:192:ARG:NH1	1:A:192:ARG:HB3	2.36	0.40
1:A:137:ASN:HB3	1:A:141:CYS:HB3	2.03	0.40
1:A:203:TRP:HD1	1:A:204:ARG:CG	2.31	0.40
2:B:355:ARG:C	2:B:356:LYS:HD2	2.42	0.40

There are no symmetry-related clashes.

5.3 Torsion angles [i](#)

5.3.1 Protein backbone [i](#)

In the following table, the Percentiles column shows the percent Ramachandran outliers of the chain as a percentile score with respect to all PDB entries followed by that with respect to all EM entries.

The Analysed column shows the number of residues for which the backbone conformation was analysed, and the total number of residues.

Mol	Chain	Analysed	Favoured	Allowed	Outliers	Percentiles	
1	A	594/771 (77%)	520 (88%)	74 (12%)	0	100	100
2	B	181/208 (87%)	163 (90%)	18 (10%)	0	100	100
All	All	775/979 (79%)	683 (88%)	92 (12%)	0	100	100

There are no Ramachandran outliers to report.

5.3.2 Protein sidechains [i](#)

In the following table, the Percentiles column shows the percent sidechain outliers of the chain as a percentile score with respect to all PDB entries followed by that with respect to all EM entries.

The Analysed column shows the number of residues for which the sidechain conformation was analysed, and the total number of residues.

Mol	Chain	Analysed	Rotameric	Outliers	Percentiles	
1	A	524/676 (78%)	485 (93%)	39 (7%)	13	43

Continued on next page...

Continued from previous page...

Mol	Chain	Analysed	Rotameric	Outliers	Percentiles	
2	B	159/181 (88%)	150 (94%)	9 (6%)	20	50
All	All	683/857 (80%)	635 (93%)	48 (7%)	19	44

All (48) residues with a non-rotameric sidechain are listed below:

Mol	Chain	Res	Type
1	A	34	TYR
1	A	45	LEU
1	A	53	ASN
1	A	83	TYR
1	A	142	LEU
1	A	152	MET
1	A	163	TRP
1	A	183	TYR
1	A	252	TYR
1	A	255	ARG
1	A	270	MET
1	A	279	TYR
1	A	302	TRP
1	A	306	ARG
1	A	345	HIS
1	A	359	LYS
1	A	378	HIS
1	A	398	GLU
1	A	400	PHE
1	A	411	SER
1	A	416	ASN
1	A	418	LEU
1	A	420	ASN
1	A	437	ASN
1	A	452	PHE
1	A	462	MET
1	A	481	LYS
1	A	482	ARG
1	A	497	TYR
1	A	504	PHE
1	A	521	TYR
1	A	525	PHE
1	A	540	TYR
1	A	542	CYS
1	A	553	LYS
1	A	566	TRP

Continued on next page...

Continued from previous page...

Mol	Chain	Res	Type
1	A	585	LEU
1	A	587	TYR
1	A	594	TRP
2	B	346	ARG
2	B	380	TYR
2	B	386	LYS
2	B	400	PHE
2	B	417	LYS
2	B	452	LEU
2	B	460	ASN
2	B	486	PHE
2	B	528	LYS

Sometimes sidechains can be flipped to improve hydrogen bonding and reduce clashes. All (5) such sidechains are listed below:

Mol	Chain	Res	Type
1	A	117	ASN
1	A	329	GLN
1	A	330	ASN
1	A	535	HIS
2	B	474	GLN

5.3.3 RNA [i](#)

There are no RNA molecules in this entry.

5.4 Non-standard residues in protein, DNA, RNA chains [i](#)

There are no non-standard protein/DNA/RNA residues in this entry.

5.5 Carbohydrates [i](#)

4 monosaccharides are modelled in this entry.

In the following table, the Counts columns list the number of bonds (or angles) for which Mogul statistics could be retrieved, the number of bonds (or angles) that are observed in the model and the number of bonds (or angles) that are defined in the Chemical Component Dictionary. The Link column lists molecule types, if any, to which the group is linked. The Z score for a bond length (or angle) is the number of standard deviations the observed value is removed from the

expected value. A bond length (or angle) with $|Z| > 2$ is considered an outlier worth inspection. RMSZ is the root-mean-square of all Z scores of the bond lengths (or angles).

Mol	Type	Chain	Res	Link	Bond lengths			Bond angles		
					Counts	RMSZ	# Z > 2	Counts	RMSZ	# Z > 2
3	NAG	G	1	3,1	14,14,15	0.92	1 (7%)	17,19,21	1.25	1 (5%)
3	NAG	G	2	3	14,14,15	0.21	0	17,19,21	0.42	0
4	NAG	H	1	1,4	14,14,15	0.59	0	17,19,21	0.40	0
4	FUC	H	2	4	10,10,11	0.67	0	14,14,16	1.03	1 (7%)

In the following table, the Chirals column lists the number of chiral outliers, the number of chiral centers analysed, the number of these observed in the model and the number defined in the Chemical Component Dictionary. Similar counts are reported in the Torsion and Rings columns. '-' means no outliers of that kind were identified.

Mol	Type	Chain	Res	Link	Chirals	Torsions	Rings
3	NAG	G	1	3,1	-	2/6/23/26	0/1/1/1
3	NAG	G	2	3	-	2/6/23/26	0/1/1/1
4	NAG	H	1	1,4	-	2/6/23/26	0/1/1/1
4	FUC	H	2	4	-	-	0/1/1/1

All (1) bond length outliers are listed below:

Mol	Chain	Res	Type	Atoms	Z	Observed(Å)	Ideal(Å)
3	G	1	NAG	O5-C1	3.33	1.49	1.43

All (2) bond angle outliers are listed below:

Mol	Chain	Res	Type	Atoms	Z	Observed(°)	Ideal(°)
3	G	1	NAG	C1-O5-C5	4.95	118.90	112.19
4	H	2	FUC	C1-O5-C5	2.15	117.64	112.78

There are no chirality outliers.

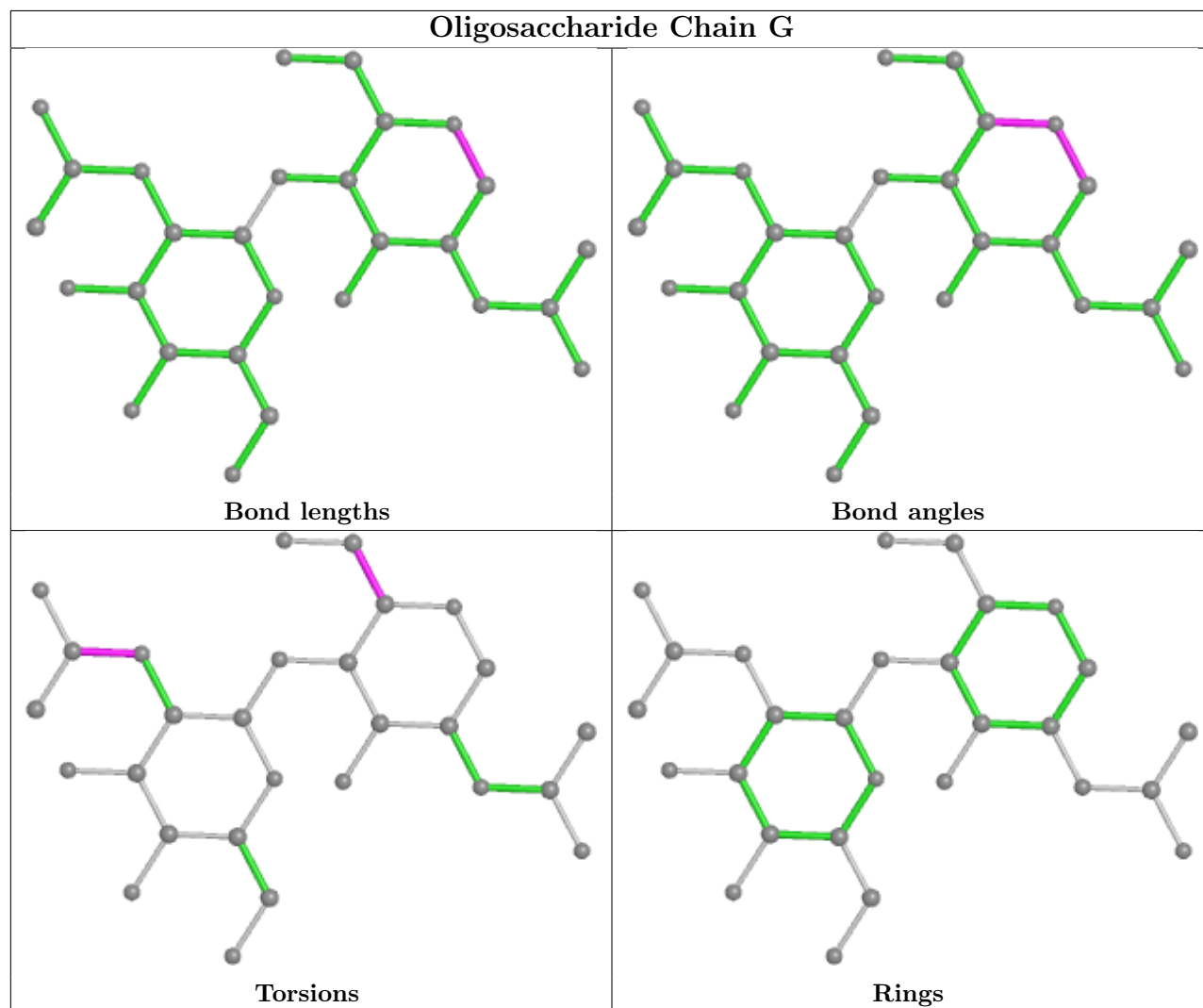
All (6) torsion outliers are listed below:

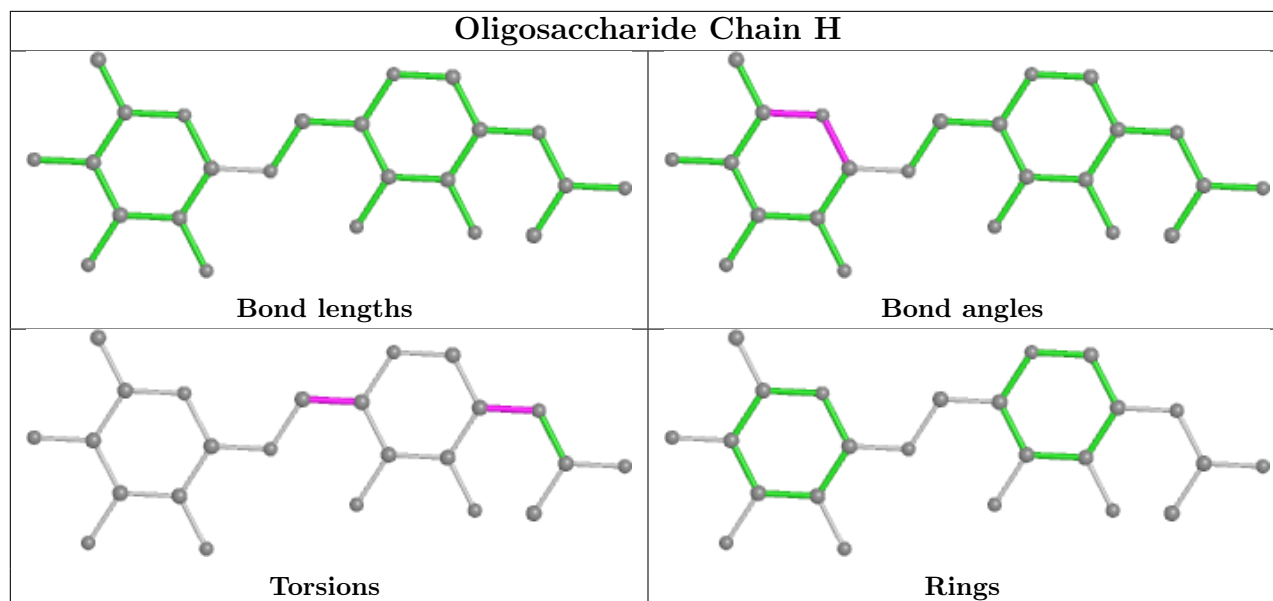
Mol	Chain	Res	Type	Atoms
3	G	1	NAG	O5-C5-C6-O6
3	G	2	NAG	C8-C7-N2-C2
3	G	2	NAG	O7-C7-N2-C2
4	H	1	NAG	O5-C5-C6-O6
3	G	1	NAG	C4-C5-C6-O6
4	H	1	NAG	C1-C2-N2-C7

There are no ring outliers.

No monomer is involved in short contacts.

The following is a two-dimensional graphical depiction of Mogul quality analysis of bond lengths, bond angles, torsion angles, and ring geometry for oligosaccharide.





5.6 Ligand geometry [i](#)

2 ligands are modelled in this entry.

In the following table, the Counts columns list the number of bonds (or angles) for which Mogul statistics could be retrieved, the number of bonds (or angles) that are observed in the model and the number of bonds (or angles) that are defined in the Chemical Component Dictionary. The Link column lists molecule types, if any, to which the group is linked. The Z score for a bond length (or angle) is the number of standard deviations the observed value is removed from the expected value. A bond length (or angle) with $|Z| > 2$ is considered an outlier worth inspection. RMSZ is the root-mean-square of all Z scores of the bond lengths (or angles).

Mol	Type	Chain	Res	Link	Bond lengths			Bond angles		
					Counts	RMSZ	$\# Z > 2$	Counts	RMSZ	$\# Z > 2$
5	NAG	B	601	2	14,14,15	0.26	0	17,19,21	0.51	0
5	NAG	A	801	1	14,14,15	0.24	0	17,19,21	0.44	0

In the following table, the Chirals column lists the number of chiral outliers, the number of chiral centers analysed, the number of these observed in the model and the number defined in the Chemical Component Dictionary. Similar counts are reported in the Torsion and Rings columns. '-' means no outliers of that kind were identified.

Mol	Type	Chain	Res	Link	Chirals	Torsions	Rings
5	NAG	B	601	2	-	3/6/23/26	0/1/1/1
5	NAG	A	801	1	-	2/6/23/26	0/1/1/1

There are no bond length outliers.

There are no bond angle outliers.

There are no chirality outliers.

All (5) torsion outliers are listed below:

Mol	Chain	Res	Type	Atoms
5	B	601	NAG	C4-C5-C6-O6
5	B	601	NAG	O5-C5-C6-O6
5	A	801	NAG	O5-C5-C6-O6
5	A	801	NAG	C4-C5-C6-O6
5	B	601	NAG	C3-C2-N2-C7

There are no ring outliers.

No monomer is involved in short contacts.

5.7 Other polymers [i](#)

There are no such residues in this entry.

5.8 Polymer linkage issues [i](#)

There are no chain breaks in this entry.

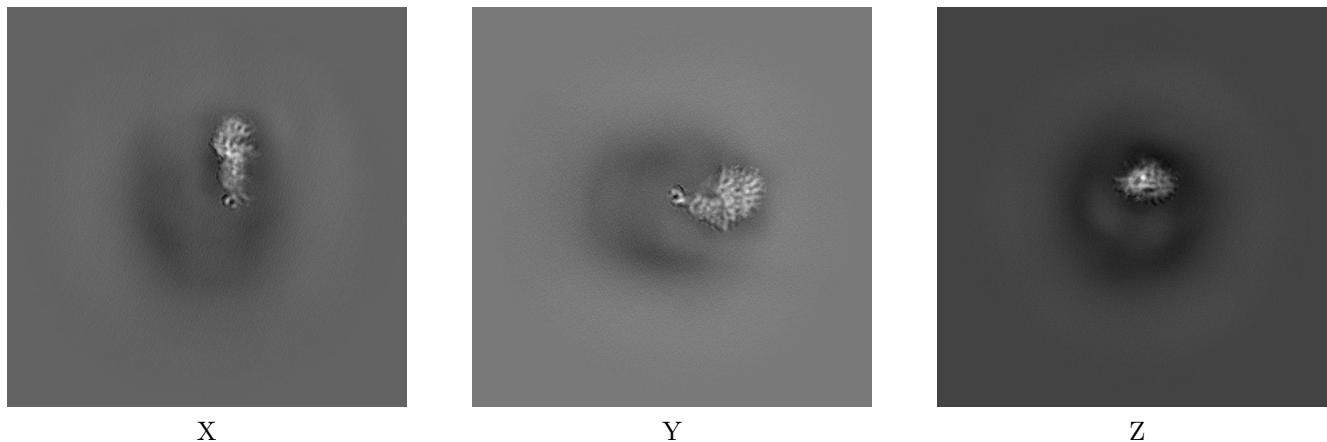
6 Map visualisation [i](#)

This section contains visualisations of the EMDB entry EMD-40979. These allow visual inspection of the internal detail of the map and identification of artifacts.

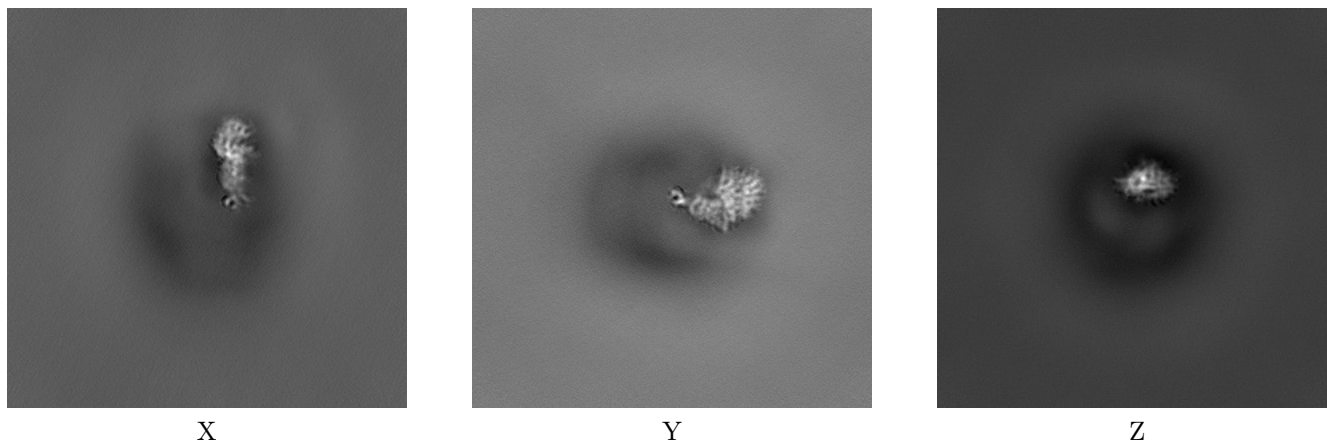
Images derived from a raw map, generated by summing the deposited half-maps, are presented below the corresponding image components of the primary map to allow further visual inspection and comparison with those of the primary map.

6.1 Orthogonal projections [i](#)

6.1.1 Primary map



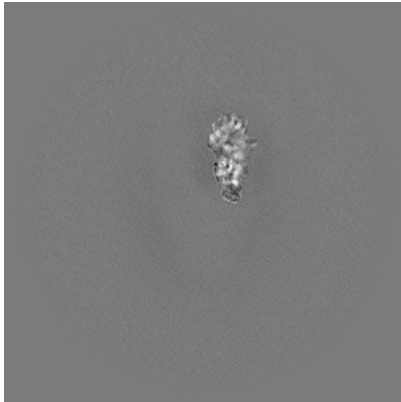
6.1.2 Raw map



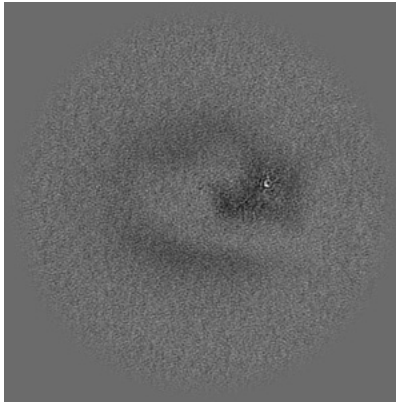
The images above show the map projected in three orthogonal directions.

6.2 Central slices [i](#)

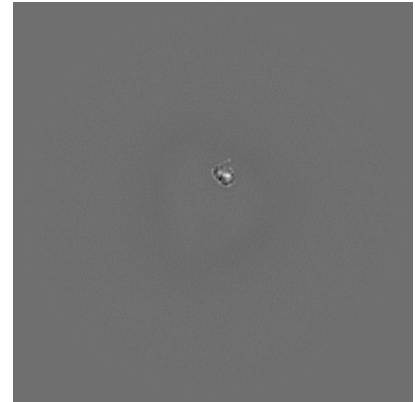
6.2.1 Primary map



X Index: 256

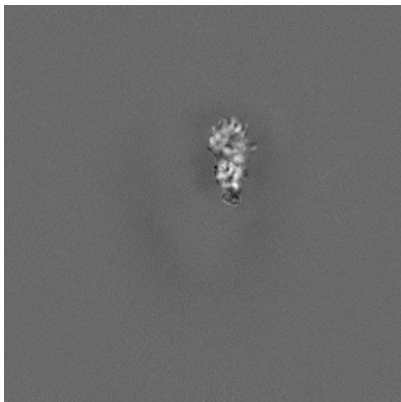


Y Index: 256

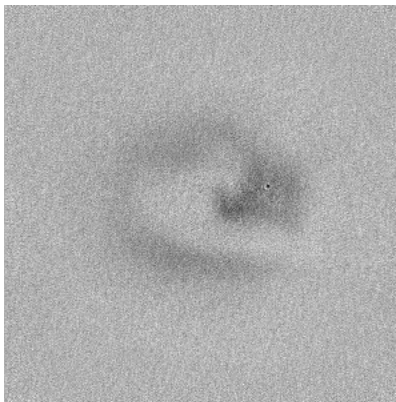


Z Index: 256

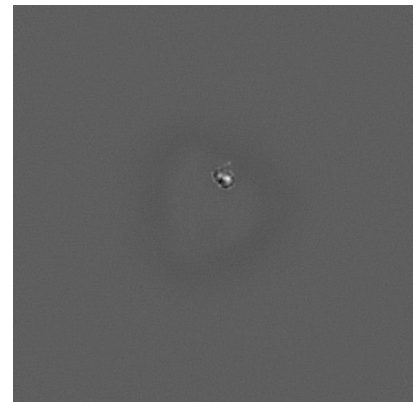
6.2.2 Raw map



X Index: 256



Y Index: 256

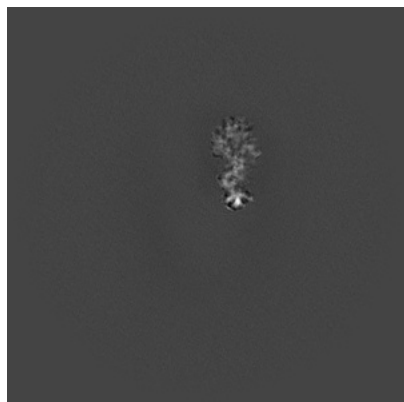


Z Index: 256

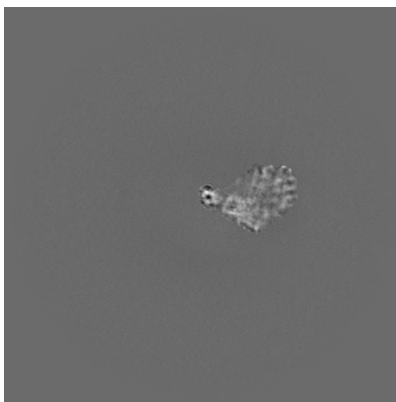
The images above show central slices of the map in three orthogonal directions.

6.3 Largest variance slices [i](#)

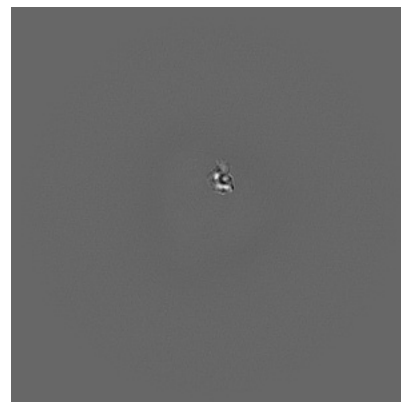
6.3.1 Primary map



X Index: 263

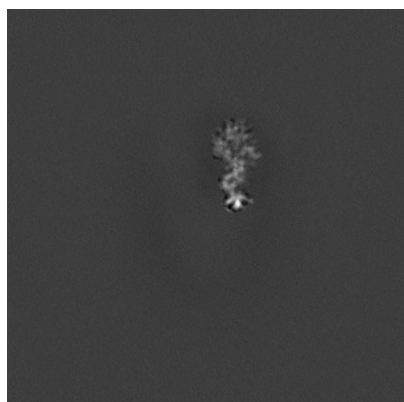


Y Index: 291

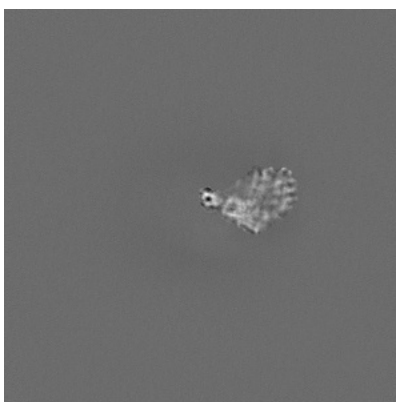


Z Index: 263

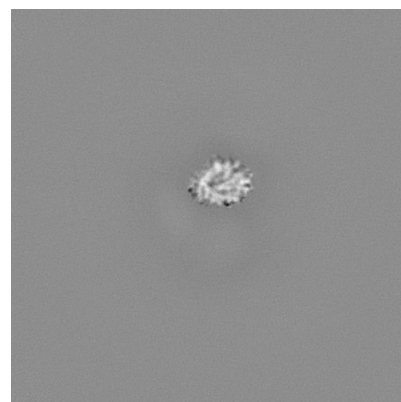
6.3.2 Raw map



X Index: 263



Y Index: 291



Z Index: 332

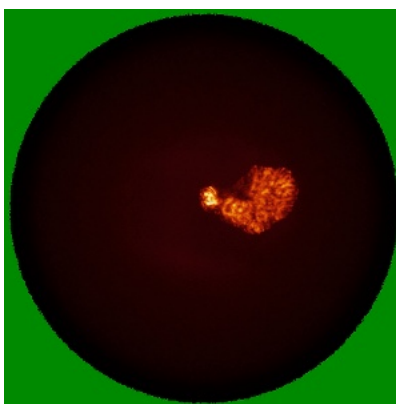
The images above show the largest variance slices of the map in three orthogonal directions.

6.4 Orthogonal standard-deviation projections (False-color) [i](#)

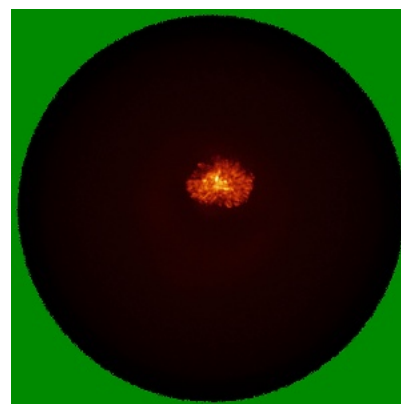
6.4.1 Primary map



X



Y

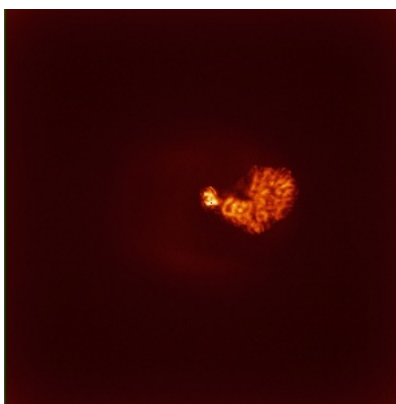


Z

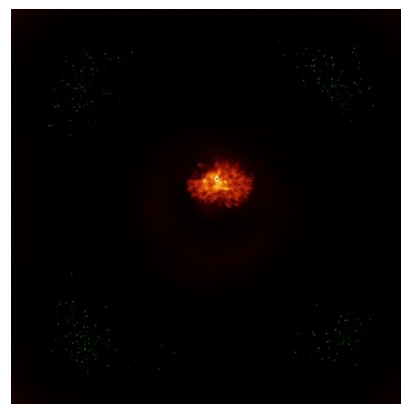
6.4.2 Raw map



X



Y

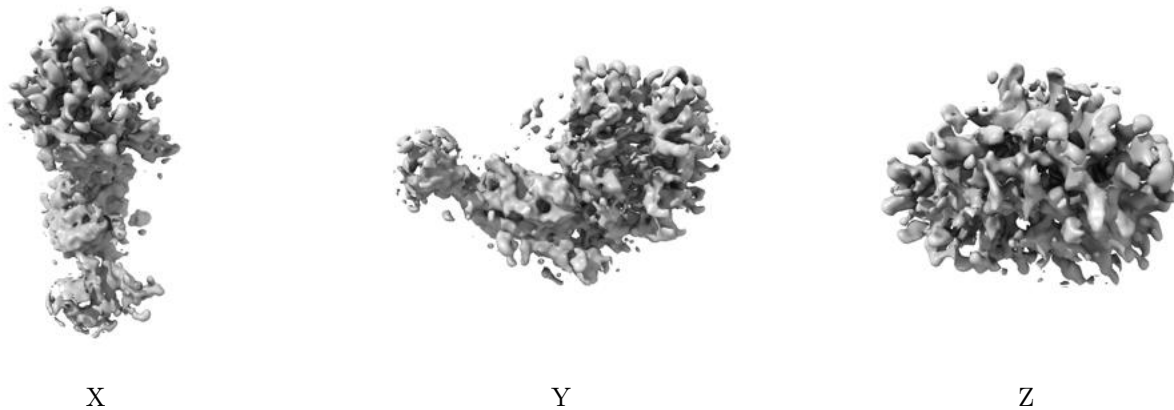


Z

The images above show the map standard deviation projections with false color in three orthogonal directions. Minimum values are shown in green, max in blue, and dark to light orange shades represent small to large values respectively.

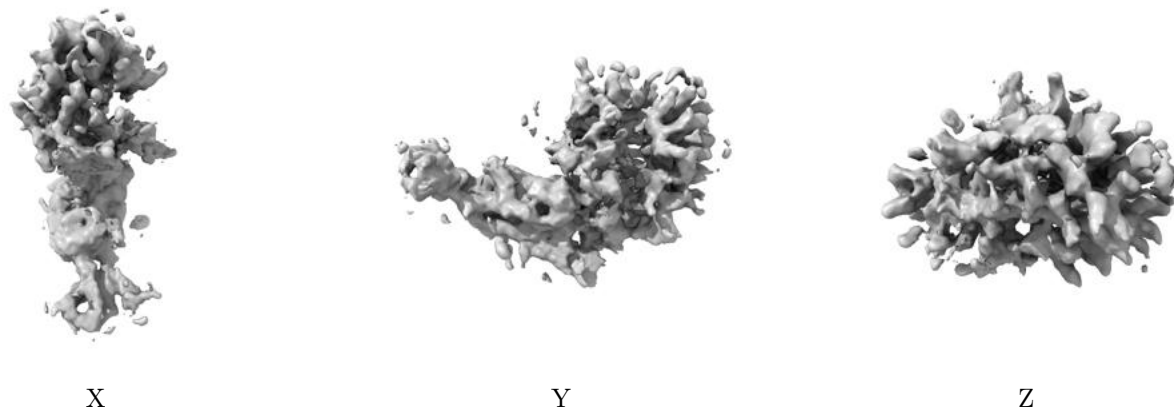
6.5 Orthogonal surface views [i](#)

6.5.1 Primary map



The images above show the 3D surface view of the map at the recommended contour level 0.3. These images, in conjunction with the slice images, may facilitate assessment of whether an appropriate contour level has been provided.

6.5.2 Raw map



These images show the 3D surface of the raw map. The raw map's contour level was selected so that its surface encloses the same volume as the primary map does at its recommended contour level.

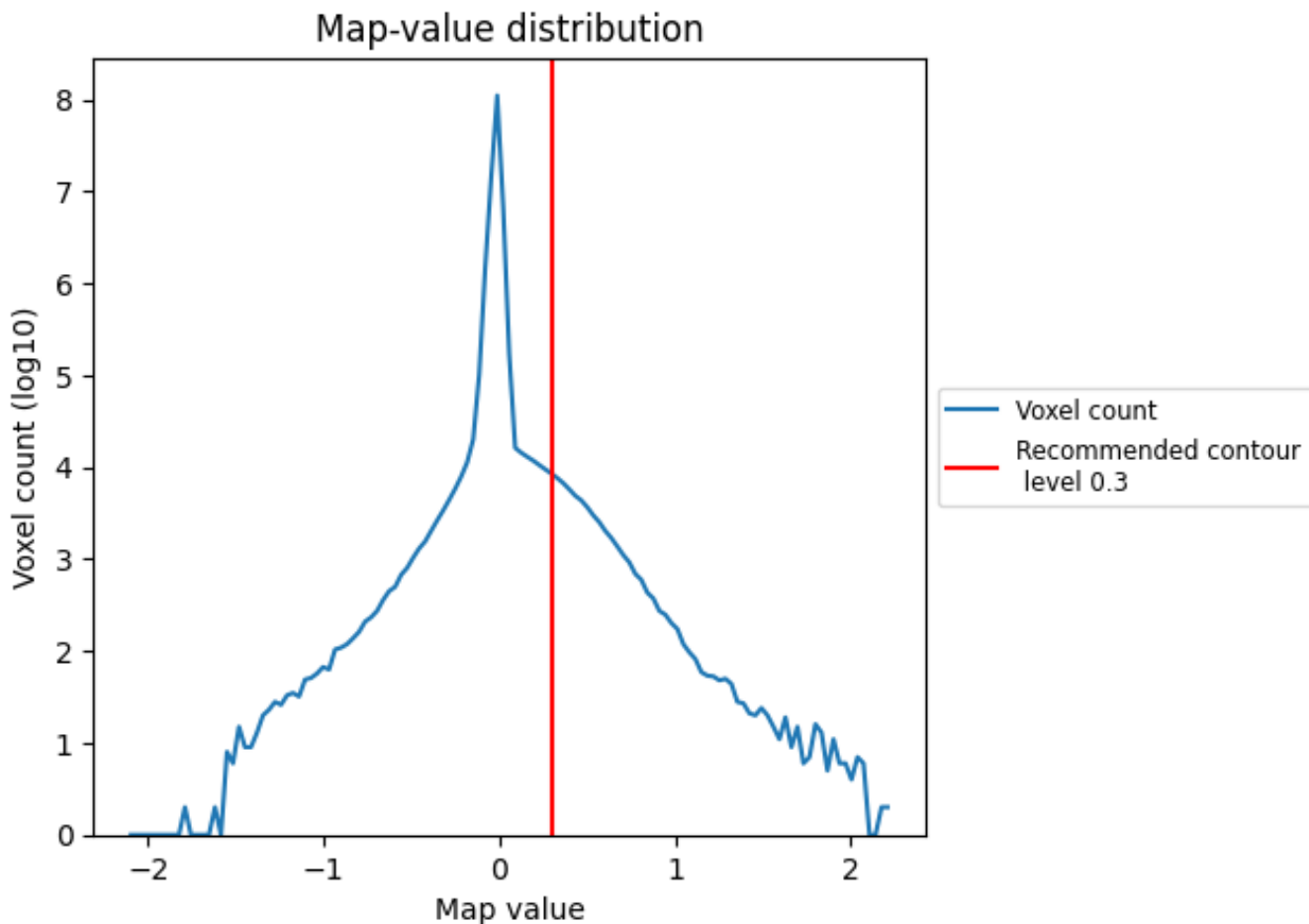
6.6 Mask visualisation [i](#)

This section was not generated. No masks/segmentation were deposited.

7 Map analysis [i](#)

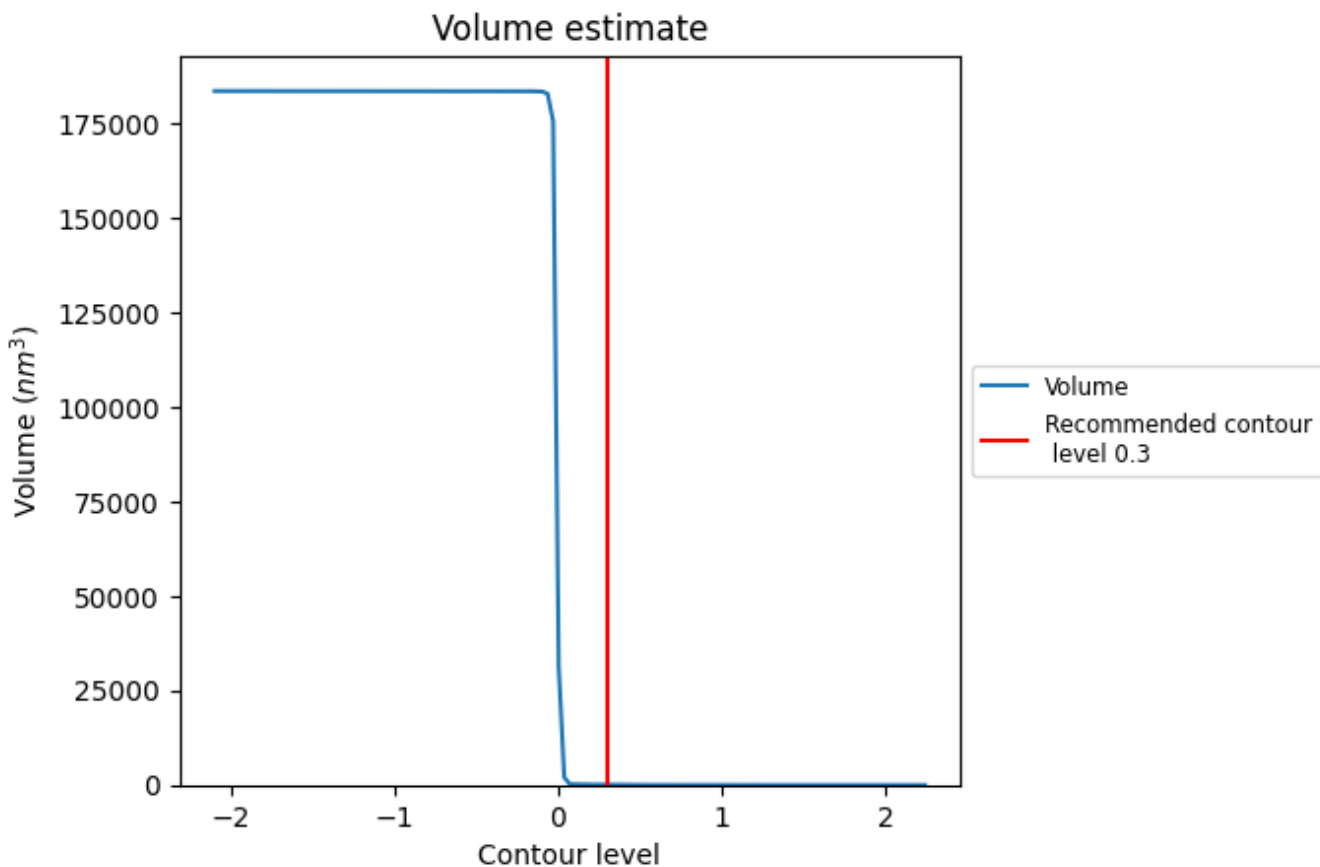
This section contains the results of statistical analysis of the map.

7.1 Map-value distribution [i](#)



The map-value distribution is plotted in 128 intervals along the x-axis. The y-axis is logarithmic. A spike in this graph at zero usually indicates that the volume has been masked.

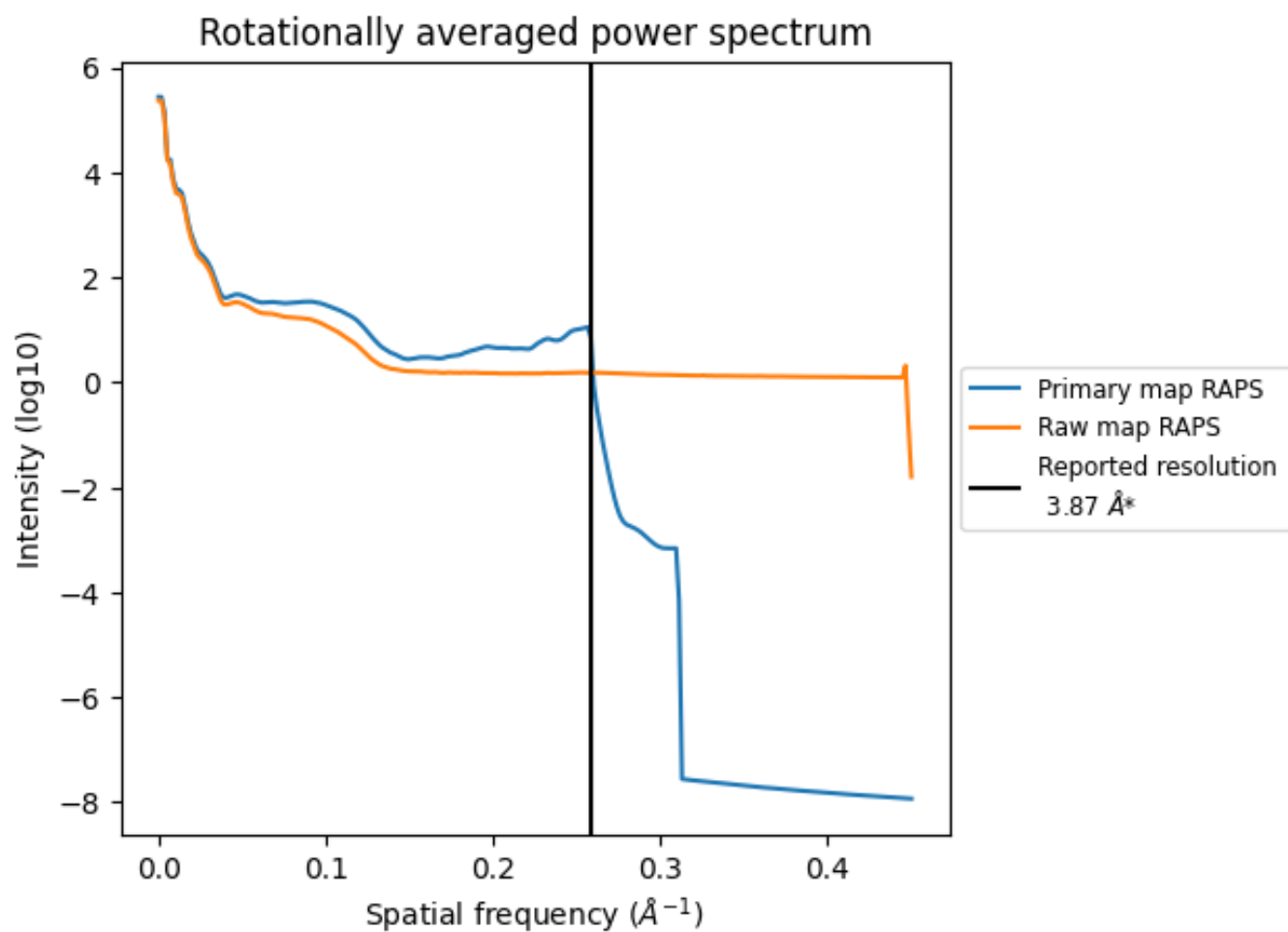
7.2 Volume estimate [i](#)



The volume at the recommended contour level is 78 nm³; this corresponds to an approximate mass of 70 kDa.

The volume estimate graph shows how the enclosed volume varies with the contour level. The recommended contour level is shown as a vertical line and the intersection between the line and the curve gives the volume of the enclosed surface at the given level.

7.3 Rotationally averaged power spectrum i

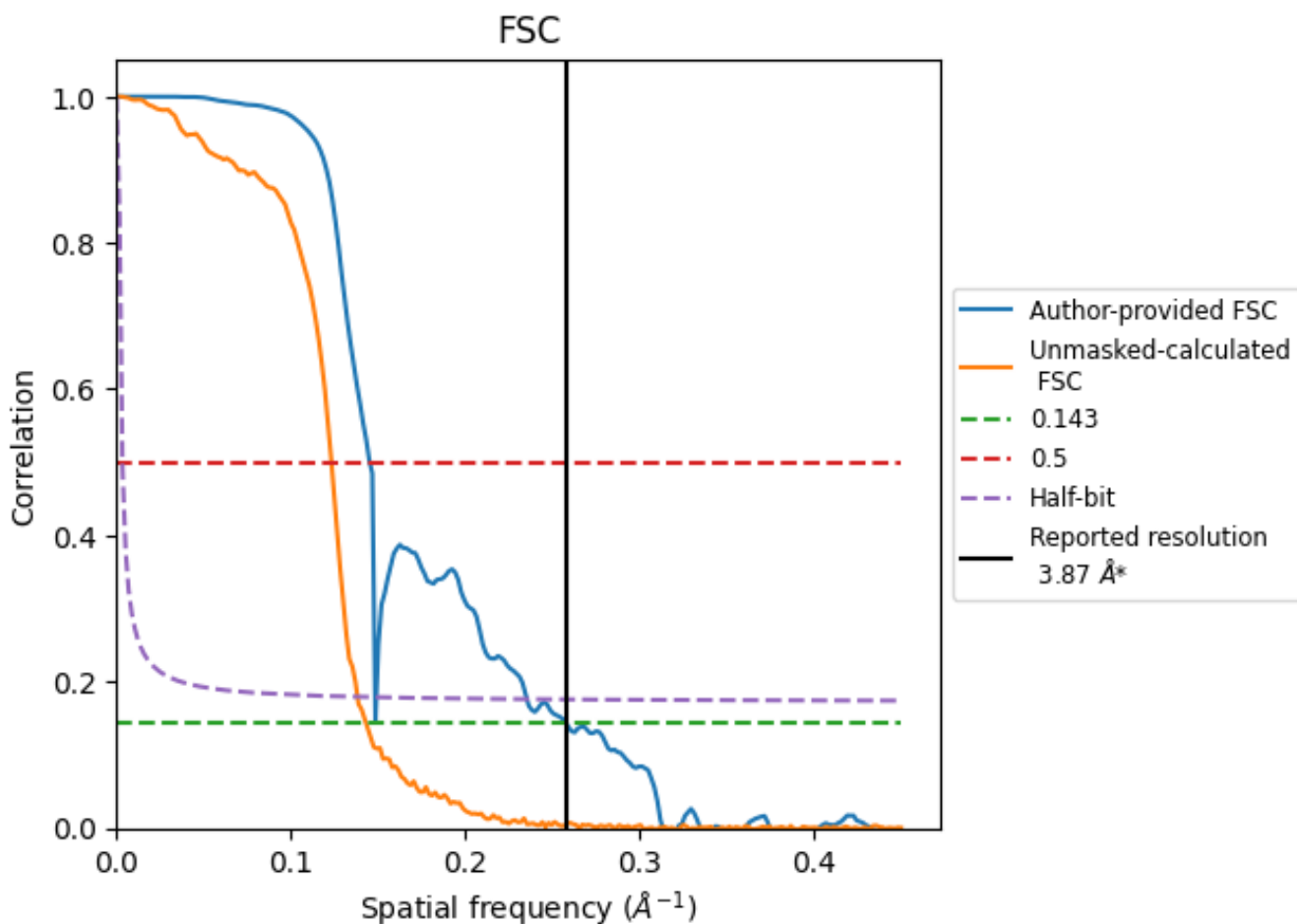


*Reported resolution corresponds to spatial frequency of 0.258 Å⁻¹

8 Fourier-Shell correlation [i](#)

Fourier-Shell Correlation (FSC) is the most commonly used method to estimate the resolution of single-particle and subtomogram-averaged maps. The shape of the curve depends on the imposed symmetry, mask and whether or not the two 3D reconstructions used were processed from a common reference. The reported resolution is shown as a black line. A curve is displayed for the half-bit criterion in addition to lines showing the 0.143 gold standard cut-off and 0.5 cut-off.

8.1 FSC [i](#)



*Reported resolution corresponds to spatial frequency of 0.258\AA^{-1}

8.2 Resolution estimates [i](#)

Resolution estimate (Å)	Estimation criterion (FSC cut-off)		
	0.143	0.5	Half-bit
Reported by author	3.87	-	-
Author-provided FSC curve	3.87	6.88	6.73
Unmasked-calculated*	6.98	8.10	7.23

*Resolution estimate based on FSC curve calculated by comparison of deposited half-maps. The value from deposited half-maps intersecting FSC 0.143 CUT-OFF 6.98 differs from the reported value 3.87 by more than 10 %

9 Map-model fit [i](#)

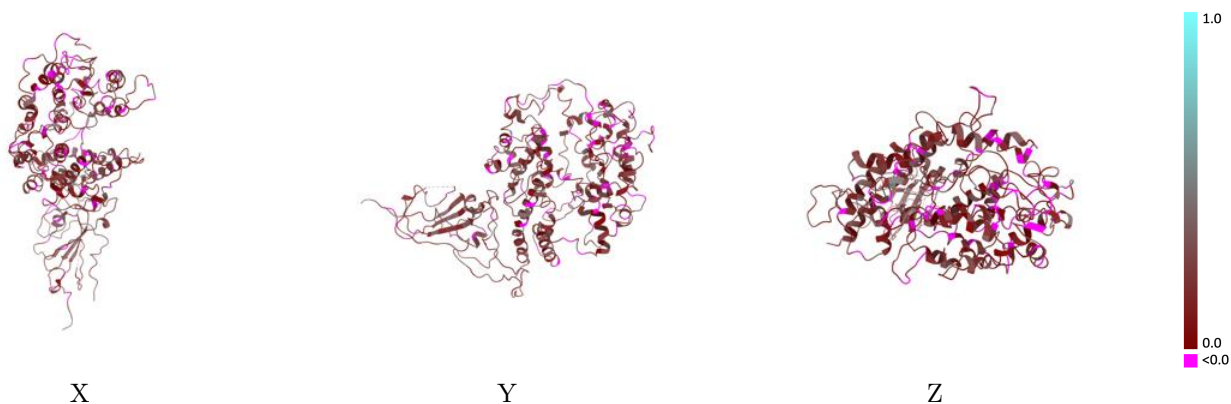
This section contains information regarding the fit between EMDB map EMD-40979 and PDB model 8T23. Per-residue inclusion information can be found in section 3 on page 6.

9.1 Map-model overlay [i](#)



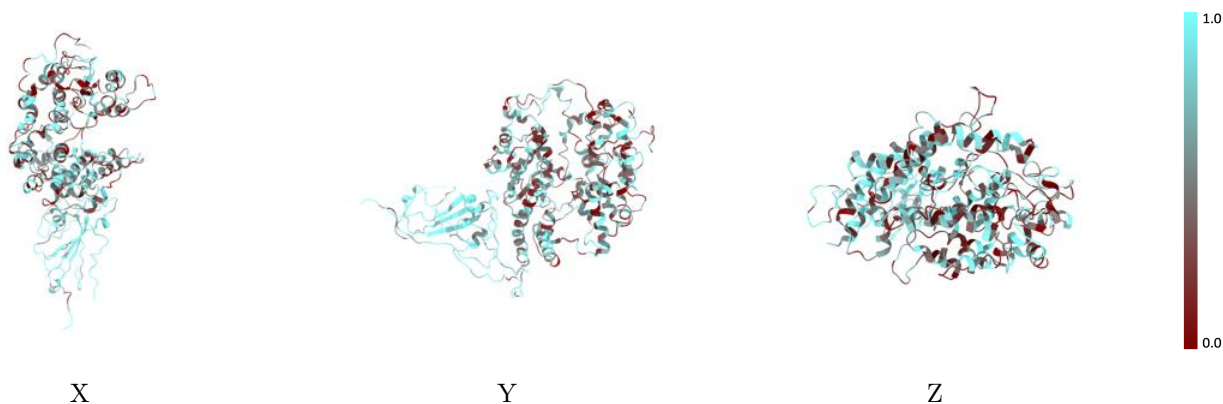
The images above show the 3D surface view of the map at the recommended contour level 0.3 at 50% transparency in yellow overlaid with a ribbon representation of the model coloured in blue. These images allow for the visual assessment of the quality of fit between the atomic model and the map.

9.2 Q-score mapped to coordinate model [\(i\)](#)



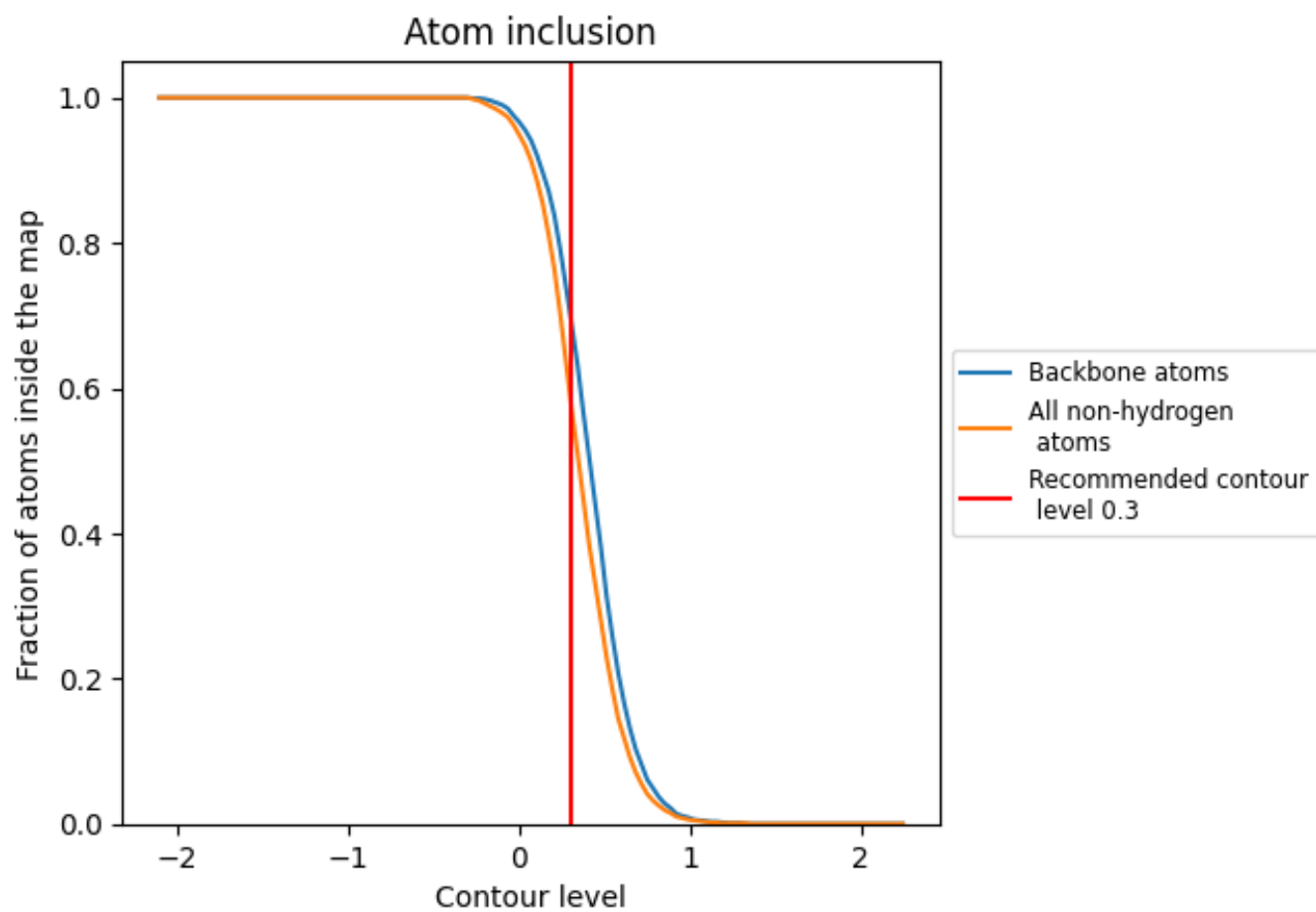
The images above show the model with each residue coloured according its Q-score. This shows their resolvability in the map with higher Q-score values reflecting better resolvability. Please note: Q-score is calculating the resolvability of atoms, and thus high values are only expected at resolutions at which atoms can be resolved. Low Q-score values may therefore be expected for many entries.

9.3 Atom inclusion mapped to coordinate model [\(i\)](#)



The images above show the model with each residue coloured according to its atom inclusion. This shows to what extent they are inside the map at the recommended contour level (0.3).











9.4 Atom inclusion [i](#)



At the recommended contour level, 70% of all backbone atoms, 59% of all non-hydrogen atoms, are inside the map.

9.5 Map-model fit summary [i](#)

The table lists the average atom inclusion at the recommended contour level (0.3) and Q-score for the entire model and for each chain.

Chain	Atom inclusion	Q-score
All	 0.5880	 0.1680
A	 0.5210	 0.1500
B	 0.8190	 0.2280
G	 0.0360	 0.0570
H	 0.7080	 0.2990

