



# wwPDB NMR Structure Validation Summary Report ⓘ

Jun 15, 2024 – 11:26 AM EDT

PDB ID : 1T5M  
Title : Structural transitions as determinants of the action of the calcium-dependent antibiotic daptomycin  
Authors : Jung, D.; Rozek, A.; Okon, M.; Hancock, R.E.  
Deposited on : 2004-05-04

This is a wwPDB NMR Structure Validation Summary Report for a publicly released PDB entry.

We welcome your comments at [validation@mail.wwpdb.org](mailto:validation@mail.wwpdb.org)

A user guide is available at

<https://www.wwpdb.org/validation/2017/NMRValidationReportHelp>

with specific help available everywhere you see the ⓘ symbol.

The types of validation reports are described at

<https://www.wwpdb.org/validation/2017/FAQs#types>.

---

The following versions of software and data (see [references ⓘ](#)) were used in the production of this report:

MolProbity : 4.02b-467  
Mogul : 2022.3.0, CSD as543be (2022)  
Percentile statistics : 20191225.v01 (using entries in the PDB archive December 25th 2019)  
wwPDB-RCI : v\_1n\_11\_5\_13\_A (Berjanski et al., 2005)  
PANAV : Wang et al. (2010)  
wwPDB-ShiftChecker : v1.2  
Ideal geometry (proteins) : Engh & Huber (2001)  
Ideal geometry (DNA, RNA) : Parkinson et al. (1996)  
Validation Pipeline (wwPDB-VP) : 2.37.1

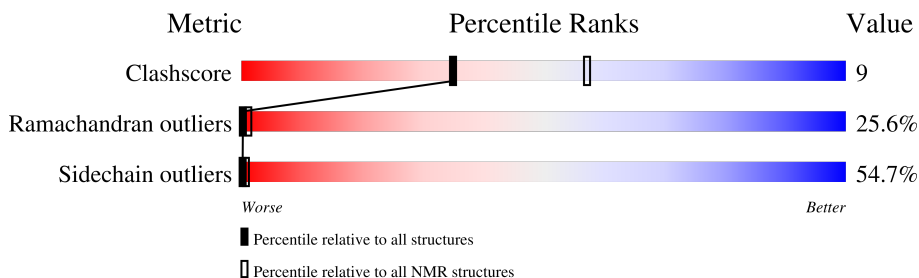
# 1 Overall quality at a glance

The following experimental techniques were used to determine the structure:

*SOLUTION NMR*

The overall completeness of chemical shifts assignment was not calculated.

Percentile scores (ranging between 0-100) for global validation metrics of the entry are shown in the following graphic. The table shows the number of entries on which the scores are based.



Metric	Whole archive (#Entries)	NMR archive (#Entries)
Clashscore	158937	12864
Ramachandran outliers	154571	11451
Sidechain outliers	154315	11428

The table below summarises the geometric issues observed across the polymeric chains and their fit to the experimental data. The red, orange, yellow and green segments indicate the fraction of residues that contain outliers for  $\geq 3$ , 2, 1 and 0 types of geometric quality criteria. A cyan segment indicates the fraction of residues that are not part of the well-defined cores, and a grey segment represents the fraction of residues that are not modelled. The numeric value for each fraction is indicated below the corresponding segment, with a dot representing fractions  $\leq 5\%$

Mol	Chain	Length	Quality of chain
1	A	13	

The following table lists non-polymeric compounds, carbohydrate monomers and non-standard residues in protein, DNA and RNA chains that are outliers for geometric criteria:

Mol	Chain	Compound	Res	Total models with violations	
				Chirality	Geometry
1	A	KYN	14	15	-
1	A	LME	13	15	1

## 2 Ensemble composition and analysis

This entry contains 15 models.

Cyrange was unable to find well-defined residues.

Error message: The number of core atoms ( 7 ) was below the domain threshold value ( 8 ).

NmrClust was unable to cluster the ensemble.

Error message: Wrapper check: not enough residues in core to run NmrClust

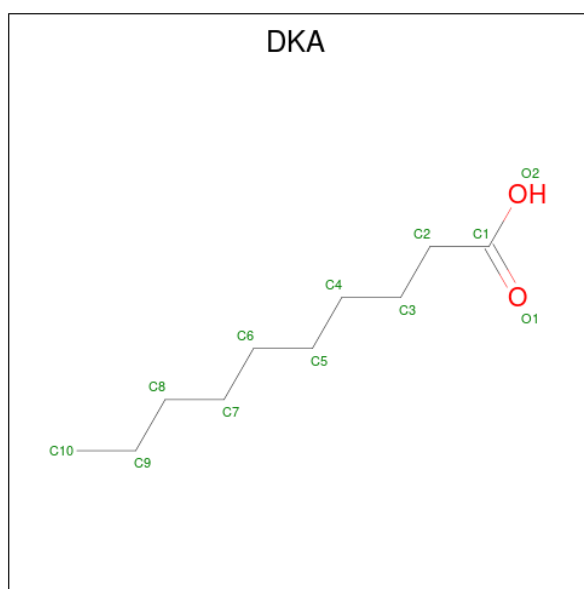
### 3 Entry composition [i](#)

There are 2 unique types of molecules in this entry. The entry contains 213 atoms, of which 98 are hydrogens and 0 are deuteriums.

- Molecule 1 is a protein called DAPTOMYCIN.

Mol	Chain	Residues	Atoms				Trace	
			Total	C	H	N		O
1	A	13	183	62	79	17	25	0

- Molecule 2 is DECANOIC ACID (three-letter code: DKA) (formula:  $C_{10}H_{20}O_2$ ).



Mol	Chain	Residues	Atoms			
			Total	C	H	O
2	A	1	30	10	19	1

## 4 Residue-property plots

### 4.1 Average score per residue in the NMR ensemble

These plots are provided for all protein, RNA, DNA and oligosaccharide chains in the entry. The first graphic is the same as shown in the summary in section 1 of this report. The second graphic shows the sequence where residues are colour-coded according to the number of geometric quality criteria for which they contain at least one outlier: green = 0, yellow = 1, orange = 2 and red = 3 or more. Stretches of 2 or more consecutive residues without any outliers are shown as green connectors. Residues which are classified as ill-defined in the NMR ensemble, are shown in cyan with an underline colour-coded according to the previous scheme. Residues which were present in the experimental sample, but not modelled in the final structure are shown in grey.

- Molecule 1: DAPTOMYCIN

Chain A: 



### 4.2 Residue scores for the representative (author defined) model from the NMR ensemble

The representative model is number 1. Colouring as in section 4.1 above.

- Molecule 1: DAPTOMYCIN

Chain A: 



## 5 Refinement protocol and experimental data overview

Of the 50 calculated structures, 15 were deposited, based on the following criterion: *structures with the least restraint violations.*

The following table shows the software used for structure solution, optimisation and refinement.

Software name	Classification	Version
DGII MODULE OF INSIGHT II VER 97.2	refinement	
DGII MODULE OF INSIGHT II VER 97.2	structure solution	
NMRPIPE 1	structure solution	
NMRVIEW 5.0.4	structure solution	

No chemical shift data was provided.

## 6 Model quality [i](#)

### 6.1 Standard geometry [i](#)

Bond lengths and bond angles in the following residue types are not validated in this section: DSG, KYN, DSN, DAL, ORN, LME, DKA

The Z score for a bond length (or angle) is the number of standard deviations the observed value is removed from the expected value. A bond length (or angle) with  $|Z| > 5$  is considered an outlier worth inspection. RMSZ is the (average) root-mean-square of all Z scores of the bond lengths (or angles).

Mol	Chain	Bond lengths		Bond angles	
		RMSZ	#Z>5	RMSZ	#Z>5
1	A	1.44±0.03	0±0/51 ( 0.0± 0.0%)	1.76±0.03	1±0/64 ( 1.6± 0.0%)
All	All	1.44	0/765 ( 0.0%)	1.76	15/960 ( 1.6%)

Chiral center outliers are detected by calculating the chiral volume of a chiral center and verifying if the center is modelled as a planar moiety or with the opposite hand. A planarity outlier is detected by checking planarity of atoms in a peptide group, atoms in a mainchain group or atoms of a sidechain that are expected to be planar.

Mol	Chain	Chirality	Planarity
1	A	4.0±0.0	0.1±0.3
All	All	60	2

There are no bond-length outliers.

All unique angle outliers are listed below.

Mol	Chain	Res	Type	Atoms	Z	Observed(°)	Ideal(°)	Models	
								Worst	Total
1	A	2	TRP	CD1-NE1-CE2	-5.56	104.00	109.00	3	15

All unique chiral outliers are listed below. They are sorted by the frequency of occurrence in the ensemble.

Mol	Chain	Res	Type	Atoms	Models (Total)
1	A	5	THR	CA,CB	15
1	A	13	LME	CB	15
1	A	14	KYN	CA	15

All unique planar outliers are listed below. They are sorted by the frequency of occurrence in the ensemble.

Mol	Chain	Res	Type	Group	Models (Total)
1	A	4	ASP	Peptide	1
1	A	6	GLY	Peptide	1

## 6.2 Too-close contacts [i](#)

In the following table, the Non-H and H(model) columns list the number of non-hydrogen atoms and hydrogen atoms in each chain respectively. The H(added) column lists the number of hydrogen atoms added and optimized by MolProbity. The Clashes column lists the number of clashes averaged over the ensemble.

Mol	Chain	Non-H	H(model)	H(added)	Clashes
1	A	104	79	71	2±1
All	All	1725	1470	1365	27

The all-atom clashscore is defined as the number of clashes found per 1000 atoms (including hydrogen atoms). The all-atom clashscore for this structure is 9.

5 of 22 unique clashes are listed below, sorted by their clash magnitude.

Atom-1	Atom-2	Clash(Å)	Distance(Å)	Models	
				Worst	Total
1:A:12:DSN:HB2	1:A:13:LME:OE1	0.65	1.91	5	1
1:A:4:ASP:O	1:A:5:THR:HG23	0.59	1.97	1	2
1:A:2:TRP:CE3	1:A:2:TRP:N	0.58	2.71	4	1
1:A:5:THR:HG22	1:A:14:KYN:O	0.58	1.97	12	4
1:A:13:LME:H2	1:A:13:LME:CD	0.57	2.13	9	1

## 6.3 Torsion angles [i](#)

### 6.3.1 Protein backbone [i](#)

In the following table, the Percentiles column shows the percent Ramachandran outliers of the chain as a percentile score with respect to all PDB entries followed by that with respect to all NMR entries. The Analysed column shows the number of residues for which the backbone conformation was analysed and the total number of residues.

Mol	Chain	Analysed	Favoured	Allowed	Outliers	Percentiles	
1	A	6/13 (46%)	3±1 (49±17%)	2±1 (26±16%)	2±1 (26±15%)	0	1
All	All	90/195 (46%)	44 (49%)	23 (26%)	23 (26%)	0	1

All 5 unique Ramachandran outliers are listed below. They are sorted by the frequency of occurrence in the ensemble.



Mol	Chain	Res	Type	Models (Total)
1	A	5	THR	12
1	A	4	ASP	7
1	A	6	GLY	2
1	A	8	ASP	1
1	A	11	GLY	1

### 6.3.2 Protein sidechains [i](#)

In the following table, the Percentiles column shows the percent sidechain outliers of the chain as a percentile score with respect to all PDB entries followed by that with respect to all NMR entries. The Analysed column shows the number of residues for which the sidechain conformation was analysed and the total number of residues.

Mol	Chain	Analysed	Rotameric	Outliers	Percentiles
1	A	5/5 (100%)	2±1 (45±15%)	3±1 (55±15%)	<b>0</b> <b>1</b>
All	All	75/75 (100%)	34 (45%)	41 (55%)	<b>0</b> <b>1</b>

All 5 unique residues with a non-rotameric sidechain are listed below. They are sorted by the frequency of occurrence in the ensemble.

Mol	Chain	Res	Type	Models (Total)
1	A	2	TRP	14
1	A	5	THR	11
1	A	4	ASP	10
1	A	10	ASP	5
1	A	8	ASP	1

### 6.3.3 RNA [i](#)

There are no RNA molecules in this entry.

## 6.4 Non-standard residues in protein, DNA, RNA chains [i](#)

6 non-standard protein/DNA/RNA residues are modelled in this entry.

In the following table, the Counts columns list the number of bonds for which Mogul statistics could be retrieved, the number of bonds that are observed in the model and the number of bonds that are defined in the chemical component dictionary. The Link column lists molecule types, if any, to which the group is linked. The Z score for a bond length is the number of standard deviations the observed value is removed from the expected value. A bond length with  $|Z| > 2$  is considered an outlier worth inspection. RMSZ is the average root-mean-square of all Z scores of the bond lengths.

Mol	Type	Chain	Res	Link	Bond lengths		
					Counts	RMSZ	#Z>2
1	KYN	A	14	1	13,14,15	1.49±0.19	2±0 (15±1%)
1	ORN	A	7	1	6,7,8	0.95±0.03	0±0 (0±0%)
1	LME	A	13	1	8,9,10	1.34±0.05	0±1 (2±6%)

In the following table, the Counts columns list the number of angles for which Mogul statistics could be retrieved, the number of angles that are observed in the model and the number of angles that are defined in the chemical component dictionary. The Link column lists molecule types, if any, to which the group is linked. The Z score for a bond angle is the number of standard deviations the observed value is removed from the expected value. A bond angle with  $|Z| > 2$  is considered an outlier worth inspection. RMSZ is the average root-mean-square of all Z scores of the bond angles.

Mol	Type	Chain	Res	Link	Bond angles		
					Counts	RMSZ	#Z>2
1	KYN	A	14	1	13,18,20	2.33±0.18	3±1 (20±9%)
1	ORN	A	7	1	2,7,9	0.15±0.04	0±0 (0±0%)
1	LME	A	13	1	6,11,13	1.89±0.42	2±1 (30±10%)

In the following table, the Chirals column lists the number of chiral outliers, the number of chiral centers analysed, the number of these observed in the model and the number defined in the chemical component dictionary. Similar counts are reported in the Torsion and Rings columns. '-' means no outliers of that kind were identified.

Mol	Type	Chain	Res	Link	Chirals	Torsions	Rings
1	LME	A	13	1	1±0,1,3,4	0±0,9,10,12	-
1	ORN	A	7	1	-	0±0,5,6,8	-
1	KYN	A	14	1	1±0,1,2,3	0±0,9,10,12	0±0,1,1,1

5 of 6 unique bond outliers are listed below. They are sorted according to the Z-score of the worst occurrence in the ensemble.

Mol	Chain	Res	Type	Atoms	Z	Observed(Å)	Ideal(Å)	Models	
								Worst	Total
1	A	14	KYN	CB-C1	6.65	1.60	1.51	5	15
1	A	14	KYN	CD2-C1	3.11	1.54	1.48	2	15
1	A	13	LME	C1-CB	2.43	1.59	1.53	10	1
1	A	13	LME	CB-CA	2.16	1.60	1.54	10	1
1	A	14	KYN	CB-CA	2.09	1.58	1.53	5	1

5 of 10 unique angle outliers are listed below. They are sorted according to the Z-score of the worst occurrence in the ensemble.

Mol	Chain	Res	Type	Atoms	Z	Observed(°)	Ideal(°)	Models	
								Worst	Total
1	A	14	KYN	O2-C1-CB	8.22	110.92	120.70	5	15
1	A	13	LME	CB-CG-CD	5.89	124.40	114.03	5	9
1	A	14	KYN	CB-C1-CD2	5.55	126.28	119.82	4	15
1	A	14	KYN	CA-CB-C1	2.90	116.53	113.10	2	3
1	A	13	LME	O-C-CA	2.62	118.03	124.77	8	12

All unique chiral outliers are listed below. They are sorted by the frequency of occurrence in the ensemble.

Mol	Chain	Res	Type	Atoms	Models (Total)
1	A	13	LME	CB	15
1	A	14	KYN	CA	15

There are no torsion outliers.

There are no ring outliers.

## 6.5 Carbohydrates [i](#)

There are no monosaccharides in this entry.

## 6.6 Ligand geometry [i](#)

1 ligand is modelled in this entry.

In the following table, the Counts columns list the number of bonds for which Mogul statistics could be retrieved, the number of bonds that are observed in the model and the number of bonds that are defined in the chemical component dictionary. The Link column lists molecule types, if any, to which the group is linked. The Z score for a bond length is the number of standard deviations the observed value is removed from the expected value. A bond length with  $|Z| > 2$  is considered an outlier worth inspection. RMSZ is the average root-mean-square of all Z scores of the bond lengths.

Mol	Type	Chain	Res	Link	Bond lengths		
					Counts	RMSZ	#Z>2
2	DKA	A	1	1	9,10,11	0.55±0.00	0±0 (0±0%)

In the following table, the Counts columns list the number of angles for which Mogul statistics could be retrieved, the number of angles that are observed in the model and the number of angles that are defined in the chemical component dictionary. The Link column lists molecule types, if any, to which the group is linked. The Z score for a bond angle is the number of standard deviations the observed value is removed from the expected value. A bond angle with  $|Z| > 2$  is

considered an outlier worth inspection. RMSZ is the average root-mean-square of all Z scores of the bond angles.

Mol	Type	Chain	Res	Link	Bond angles		
					Counts	RMSZ	#Z>2
2	DKA	A	1	1	8,9,11	0.40±0.00	0±0 (0±0%)

In the following table, the Chirals column lists the number of chiral outliers, the number of chiral centers analysed, the number of these observed in the model and the number defined in the chemical component dictionary. Similar counts are reported in the Torsion and Rings columns. '-' means no outliers of that kind were identified.

Mol	Type	Chain	Res	Link	Chirals	Torsions	Rings
2	DKA	A	1	1	-	0±0,8,8,9	-

There are no bond-length outliers.

There are no bond-angle outliers.

There are no chirality outliers.

There are no torsion outliers.

There are no ring outliers.

## 6.7 Other polymers [i](#)

There are no such molecules in this entry.

## 6.8 Polymer linkage issues [i](#)

There are no chain breaks in this entry.

## 7 Chemical shift validation

No chemical shift data were provided