



Full wwPDB X-ray Structure Validation Report ⓘ

Oct 16, 2023 – 01:10 AM EDT

PDB ID : 7TAZ
Title : Crystal structure of HIV-1 reverse transcriptase (RT) in complex with VM-1500A, a non-nucleoside RT inhibitor
Authors : Snyder, A.A.; Risener, C.J.; Kirby, K.A.; Sarafianos, S.G.
Deposited on : 2021-12-21
Resolution : 2.40 Å(reported)

This is a Full wwPDB X-ray Structure Validation Report for a publicly released PDB entry.

We welcome your comments at validation@mail.wwpdb.org

A user guide is available at

<https://www.wwpdb.org/validation/2017/XrayValidationReportHelp>

with specific help available everywhere you see the ⓘ symbol.

The types of validation reports are described at

<http://www.wwpdb.org/validation/2017/FAQs#types>.

The following versions of software and data (see [references ⓘ](#)) were used in the production of this report:

MolProbity : 4.02b-467
Mogul : 1.8.5 (274361), CSD as541be (2020)
Xtriage (Phenix) : 1.13
EDS : 2.36
buster-report : 1.1.7 (2018)
Percentile statistics : 20191225.v01 (using entries in the PDB archive December 25th 2019)
Refmac : 5.8.0158
CCP4 : 7.0.044 (Gargrove)
Ideal geometry (proteins) : Engh & Huber (2001)
Ideal geometry (DNA, RNA) : Parkinson et al. (1996)
Validation Pipeline (wwPDB-VP) : 2.36

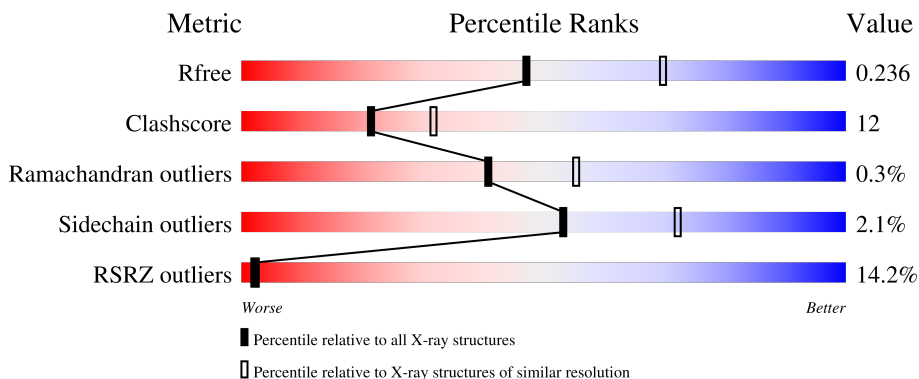
1 Overall quality at a glance

The following experimental techniques were used to determine the structure:

X-RAY DIFFRACTION

The reported resolution of this entry is 2.40 Å.

Percentile scores (ranging between 0-100) for global validation metrics of the entry are shown in the following graphic. The table shows the number of entries on which the scores are based.



Metric	Whole archive (#Entries)	Similar resolution (#Entries, resolution range(Å))
R_{free}	130704	3907 (2.40-2.40)
Clashscore	141614	4398 (2.40-2.40)
Ramachandran outliers	138981	4318 (2.40-2.40)
Sidechain outliers	138945	4319 (2.40-2.40)
RSRZ outliers	127900	3811 (2.40-2.40)

The table below summarises the geometric issues observed across the polymeric chains and their fit to the electron density. The red, orange, yellow and green segments of the lower bar indicate the fraction of residues that contain outliers for ≥ 3 , 2, 1 and 0 types of geometric quality criteria respectively. A grey segment represents the fraction of residues that are not modelled. The numeric value for each fraction is indicated below the corresponding segment, with a dot representing fractions $\leq 5\%$. The upper red bar (where present) indicates the fraction of residues that have poor fit to the electron density. The numeric value is given above the bar.

Mol	Chain	Length	Quality of chain
1	A	557	
2	B	429	

2 Entry composition

There are 4 unique types of molecules in this entry. The entry contains 8296 atoms, of which 0 are hydrogens and 0 are deuteriums.

In the tables below, the ZeroOcc column contains the number of atoms modelled with zero occupancy, the AltConf column contains the number of residues with at least one atom in alternate conformation and the Trace column contains the number of residues modelled with at most 2 atoms.

- Molecule 1 is a protein called Reverse transcriptase/ribonuclease H.

Mol	Chain	Residues	Atoms					ZeroOcc	AltConf	Trace
			Total	C	N	O	S			
1	A	556	4529	2931	754	836	8	0	2	0

There are 5 discrepancies between the modelled and reference sequences:

Chain	Residue	Modelled	Actual	Comment	Reference
A	-1	MET	-	expression tag	UNP P03366
A	0	VAL	-	expression tag	UNP P03366
A	172	ALA	LYS	engineered mutation	UNP P03366
A	173	ALA	LYS	engineered mutation	UNP P03366
A	280	SER	CYS	engineered mutation	UNP P03366

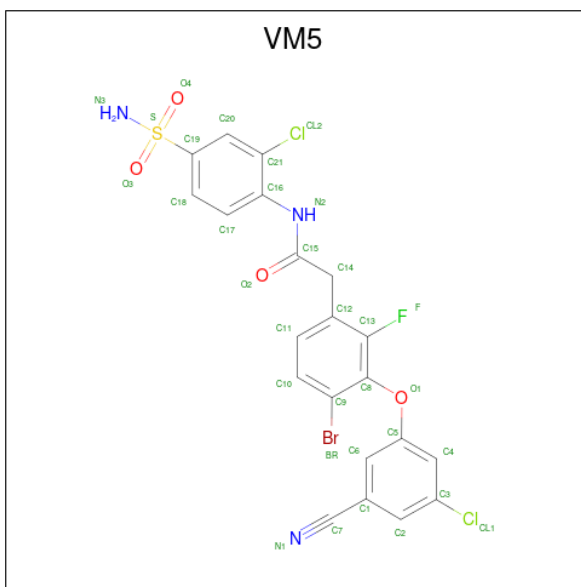
- Molecule 2 is a protein called Reverse transcriptase p51.

Mol	Chain	Residues	Atoms					ZeroOcc	AltConf	Trace
			Total	C	N	O	S			
2	B	416	3458	2254	571	626	7	0	3	0

There are 2 discrepancies between the modelled and reference sequences:

Chain	Residue	Modelled	Actual	Comment	Reference
B	0	GLY	-	expression tag	UNP P03366
B	280	SER	CYS	engineered mutation	UNP P03366

- Molecule 3 is 2-[4-bromo-3-(3-chloro-5-cyanophenoxy)-2-fluorophenyl]-N-(2-chloro-4-sulfamoylphenyl)acetamide (three-letter code: VM5) (formula: C₂₁H₁₃BrCl₂FN₃O₄S) (labeled as "Ligand of Interest" by depositor).



Mol	Chain	Residues	Atoms							ZeroOcc	AltConf	
			Total	Br	C	Cl	F	N	O			S
3	A	1	33	1	21	2	1	3	4	1	0	0

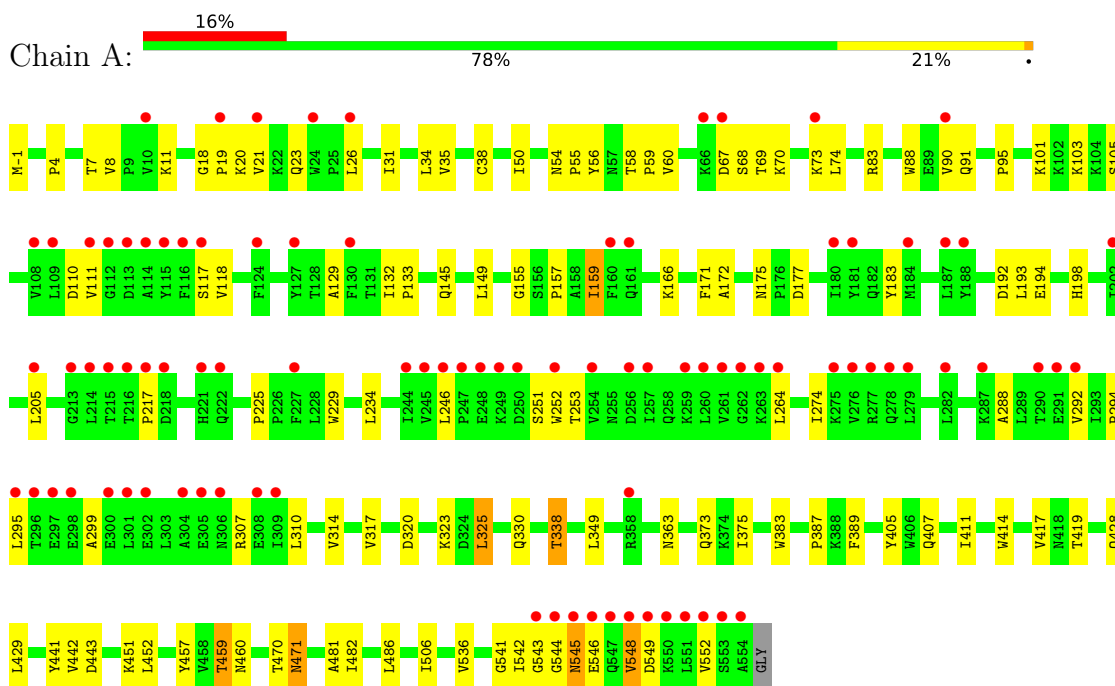
- Molecule 4 is water.

Mol	Chain	Residues	Atoms		ZeroOcc	AltConf
4	A	179	Total	O	0	0
			179	179		
4	B	97	Total	O	0	0
			97	97		

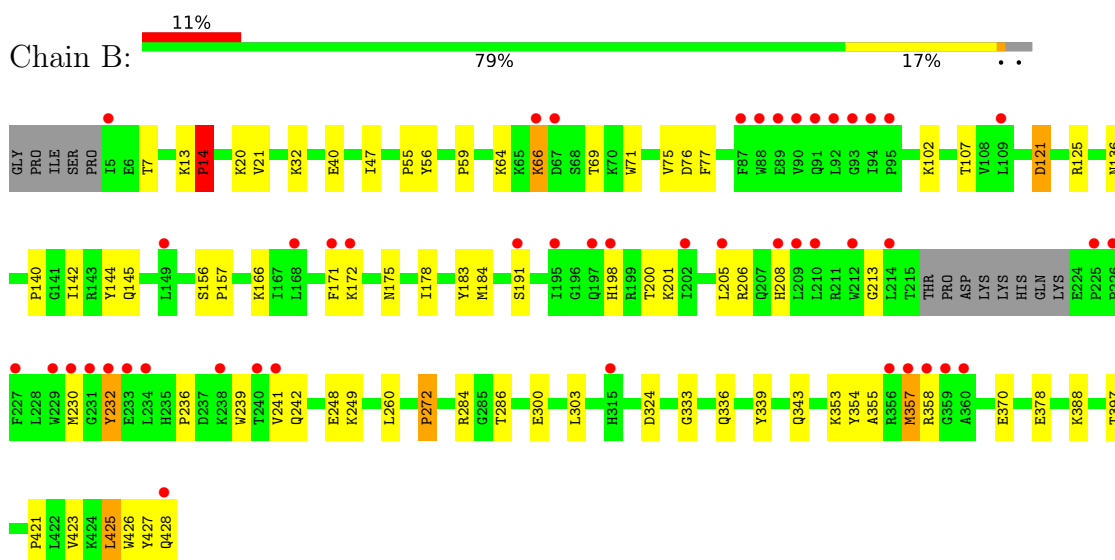
3 Residue-property plots

These plots are drawn for all protein, RNA, DNA and oligosaccharide chains in the entry. The first graphic for a chain summarises the proportions of the various outlier classes displayed in the second graphic. The second graphic shows the sequence view annotated by issues in geometry and electron density. Residues are color-coded according to the number of geometric quality criteria for which they contain at least one outlier: green = 0, yellow = 1, orange = 2 and red = 3 or more. A red dot above a residue indicates a poor fit to the electron density ($RSRZ > 2$). Stretches of 2 or more consecutive residues without any outlier are shown as a green connector. Residues present in the sample, but not in the model, are shown in grey.

- Molecule 1: Reverse transcriptase/ribonuclease H



- Molecule 2: Reverse transcriptase p51



4 Data and refinement statistics

Property	Value	Source
Space group	C 1 2 1	Depositor
Cell constants a, b, c, α , β , γ	163.05Å 73.87Å 108.64Å 90.00° 99.96° 90.00°	Depositor
Resolution (Å)	48.62 – 2.40 48.57 – 2.40	Depositor EDS
% Data completeness (in resolution range)	99.9 (48.62-2.40) 99.9 (48.57-2.40)	Depositor EDS
R_{merge}	0.05	Depositor
R_{sym}	(Not available)	Depositor
$\langle I/\sigma(I) \rangle$ ¹	2.60 (at 2.39Å)	Xtrriage
Refinement program	REFMAC 5.8.0238	Depositor
R, R_{free}	0.223 , 0.236 0.227 , 0.236	Depositor DCC
R_{free} test set	2478 reflections (4.96%)	wwPDB-VP
Wilson B-factor (Å ²)	66.5	Xtrriage
Anisotropy	0.339	Xtrriage
Bulk solvent k_{sol} (e/Å ³), B_{sol} (Å ²)	0.31 , 60.4	EDS
L-test for twinning ²	$\langle L \rangle = 0.50$, $\langle L^2 \rangle = 0.34$	Xtrriage
Estimated twinning fraction	No twinning to report.	Xtrriage
F_o, F_c correlation	0.94	EDS
Total number of atoms	8296	wwPDB-VP
Average B, all atoms (Å ²)	94.0	wwPDB-VP

Xtrriage's analysis on translational NCS is as follows: *The largest off-origin peak in the Patterson function is 5.24% of the height of the origin peak. No significant pseudotranslation is detected.*

¹Intensities estimated from amplitudes.

²Theoretical values of $\langle |L| \rangle$, $\langle L^2 \rangle$ for acentric reflections are 0.5, 0.333 respectively for untwinned datasets, and 0.375, 0.2 for perfectly twinned datasets.

5 Model quality [i](#)

5.1 Standard geometry [i](#)

Bond lengths and bond angles in the following residue types are not validated in this section: VM5

The Z score for a bond length (or angle) is the number of standard deviations the observed value is removed from the expected value. A bond length (or angle) with $|Z| > 5$ is considered an outlier worth inspection. RMSZ is the root-mean-square of all Z scores of the bond lengths (or angles).

Mol	Chain	Bond lengths		Bond angles	
		RMSZ	# Z >5	RMSZ	# Z >5
1	A	0.69	0/4654	0.82	0/6325
2	B	0.68	0/3565	0.83	2/4844 (0.0%)
All	All	0.69	0/8219	0.82	2/11169 (0.0%)

Chiral center outliers are detected by calculating the chiral volume of a chiral center and verifying if the center is modelled as a planar moiety or with the opposite hand. A planarity outlier is detected by checking planarity of atoms in a peptide group, atoms in a mainchain group or atoms of a sidechain that are expected to be planar.

Mol	Chain	#Chirality outliers	#Planarity outliers
1	A	0	1
2	B	0	1
All	All	0	2

There are no bond length outliers.

All (2) bond angle outliers are listed below:

Mol	Chain	Res	Type	Atoms	Z	Observed($^{\circ}$)	Ideal($^{\circ}$)
2	B	66	LYS	CB-CA-C	6.62	123.64	110.40
2	B	121	ASP	CB-CA-C	5.79	121.98	110.40

There are no chirality outliers.

All (2) planarity outliers are listed below:

Mol	Chain	Res	Type	Group
1	A	288	ALA	Peptide
2	B	357	MET	Peptide

5.2 Too-close contacts [i](#)

In the following table, the Non-H and H(model) columns list the number of non-hydrogen atoms and hydrogen atoms in the chain respectively. The H(added) column lists the number of hydrogen atoms added and optimized by MolProbity. The Clashes column lists the number of clashes within the asymmetric unit, whereas Symm-Clashes lists symmetry-related clashes.

Mol	Chain	Non-H	H(model)	H(added)	Clashes	Symm-Clashes
1	A	4529	0	4587	123	1
2	B	3458	0	3483	77	1
3	A	33	0	0	2	0
4	A	179	0	0	54	0
4	B	97	0	0	26	0
All	All	8296	0	8070	193	1

The all-atom clashscore is defined as the number of clashes found per 1000 atoms (including hydrogen atoms). The all-atom clashscore for this structure is 12.

All (193) close contacts within the same asymmetric unit are listed below, sorted by their clash magnitude.

Atom-1	Atom-2	Interatomic distance (Å)	Clash overlap (Å)
2:B:102:LYS:CE	4:B:568:HOH:O	1.80	1.27
2:B:102:LYS:HD2	4:B:568:HOH:O	1.37	1.22
1:A:320:ASP:OD2	1:A:323:LYS:HE3	1.41	1.18
1:A:34:LEU:HD22	1:A:73:LYS:HD3	1.27	1.17
1:A:73:LYS:HD2	4:A:702:HOH:O	1.39	1.17
1:A:34:LEU:CD2	1:A:73:LYS:HD3	1.74	1.15
1:A:543:GLY:HA3	2:B:284:ARG:O	1.55	1.07
1:A:325:LEU:HD21	4:A:788:HOH:O	1.61	0.99
1:A:375:ILE:HG22	4:A:862:HOH:O	1.63	0.96
1:A:74:LEU:N	4:A:702:HOH:O	2.01	0.94
1:A:320:ASP:OD2	1:A:323:LYS:CE	2.16	0.93
2:B:102:LYS:CD	4:B:568:HOH:O	1.86	0.93
2:B:427:TYR:HD2	4:B:551:HOH:O	1.52	0.93
1:A:34:LEU:HD22	1:A:73:LYS:CD	1.98	0.92
1:A:34:LEU:HD11	4:A:808:HOH:O	1.71	0.90
1:A:110:ASP:OD1	4:A:701:HOH:O	1.88	0.89
1:A:198:HIS:HA	4:A:771:HOH:O	1.72	0.89
1:A:389:PHE:CE1	4:A:862:HOH:O	2.27	0.88
1:A:411:ILE:HB	4:A:798:HOH:O	1.72	0.88
2:B:144:TYR:HB3	4:B:503:HOH:O	1.75	0.86
2:B:248:GLU:O	4:B:501:HOH:O	1.93	0.84
1:A:389:PHE:CZ	4:A:862:HOH:O	2.29	0.84

Continued on next page...

Continued from previous page...

Atom-1	Atom-2	Interatomic distance (Å)	Clash overlap (Å)
2:B:300:GLU:HG2	4:B:590:HOH:O	1.78	0.83
2:B:205:LEU:HA	2:B:208:HIS:HD2	1.45	0.82
1:A:482:ILE:HG23	4:A:851:HOH:O	1.79	0.81
1:A:451:LYS:HE3	1:A:471:ASN:HA	1.62	0.80
2:B:249:LYS:HA	4:B:501:HOH:O	1.80	0.80
1:A:375:ILE:CG2	4:A:862:HOH:O	2.25	0.80
1:A:7:THR:HG22	4:A:794:HOH:O	1.82	0.78
2:B:357:MET:HE3	2:B:370[B]:GLU:HB3	1.65	0.78
2:B:47:ILE:HB	4:B:503:HOH:O	1.82	0.78
1:A:91:GLN:NE2	1:A:183:TYR:OH	2.18	0.77
1:A:229:TRP:HB3	4:A:775:HOH:O	1.85	0.77
1:A:229:TRP:CB	4:A:775:HOH:O	2.34	0.75
1:A:133:PRO:HD2	4:A:810:HOH:O	1.89	0.71
1:A:18:GLY:HA3	4:A:847:HOH:O	1.91	0.70
1:A:34:LEU:HD22	1:A:73:LYS:CE	2.21	0.69
2:B:272:PRO:HA	4:B:543:HOH:O	1.91	0.69
2:B:357:MET:CE	2:B:370[B]:GLU:HB3	2.24	0.68
1:A:544:GLY:O	1:A:548:VAL:HG12	1.93	0.68
2:B:13:LYS:HB3	2:B:14:PRO:HD2	1.74	0.68
2:B:20:LYS:HE3	4:B:525:HOH:O	1.94	0.67
2:B:175:ASN:HD21	2:B:201:LYS:CE	2.07	0.67
1:A:-1:MET:HA	4:A:852:HOH:O	1.95	0.67
2:B:213:GLY:HA2	4:B:511:HOH:O	1.93	0.67
1:A:155:GLY:O	1:A:159:ILE:HG13	1.95	0.66
1:A:330:GLN:HB2	1:A:338:THR:HG22	1.76	0.66
2:B:425:LEU:O	2:B:428:GLN:N	2.21	0.66
1:A:246:LEU:HD11	1:A:310:LEU:HD12	1.77	0.66
2:B:191:SER:OG	2:B:198:HIS:ND1	2.29	0.66
1:A:253:THR:HG22	1:A:292:VAL:HG22	1.78	0.66
2:B:175:ASN:ND2	2:B:201:LYS:HE2	2.10	0.66
1:A:34:LEU:CD2	1:A:73:LYS:CD	2.62	0.65
1:A:552:VAL:CG1	4:A:714:HOH:O	2.44	0.65
1:A:177:ASP:HB3	4:A:846:HOH:O	1.97	0.64
2:B:32:LYS:HE3	4:B:589:HOH:O	1.97	0.64
1:A:536:VAL:HB	1:A:542:ILE:HD13	1.80	0.64
1:A:88:TRP:HE1	1:A:90:VAL:HG22	1.64	0.63
2:B:40:GLU:HB3	4:B:537:HOH:O	1.99	0.62
1:A:193:LEU:HD12	4:A:771:HOH:O	2.00	0.62
1:A:91:GLN:NE2	1:A:183:TYR:CZ	2.68	0.62
1:A:482:ILE:CG2	4:A:851:HOH:O	2.43	0.60
1:A:73:LYS:CD	4:A:702:HOH:O	2.15	0.60

Continued on next page...

Continued from previous page...

Atom-1	Atom-2	Interatomic distance (Å)	Clash overlap (Å)
2:B:353:LYS:O	2:B:354:TYR:CD1	2.55	0.60
1:A:552:VAL:HG11	4:A:714:HOH:O	2.01	0.60
2:B:339:TYR:OH	2:B:378:GLU:OE1	2.17	0.59
1:A:383:TRP:CD2	4:A:788:HOH:O	2.56	0.59
2:B:357:MET:HE3	2:B:370[A]:GLU:CB	2.32	0.59
2:B:357:MET:HE3	2:B:370[A]:GLU:HB2	1.84	0.58
2:B:66:LYS:O	2:B:230:MET:HE1	2.04	0.57
2:B:175:ASN:ND2	2:B:201:LYS:CE	2.67	0.57
1:A:34:LEU:HD21	1:A:73:LYS:HD3	1.78	0.57
1:A:544:GLY:O	1:A:548:VAL:CG1	2.53	0.56
1:A:443:ASP:HB3	1:A:548:VAL:HG13	1.88	0.55
1:A:88:TRP:NE1	1:A:90:VAL:HG22	2.21	0.55
2:B:20:LYS:CE	4:B:525:HOH:O	2.52	0.55
1:A:7:THR:HG23	4:A:749:HOH:O	2.06	0.55
2:B:66:LYS:O	2:B:230:MET:CE	2.55	0.55
1:A:56:TYR:O	1:A:129:ALA:HB3	2.07	0.55
1:A:23:GLN:OE1	1:A:60:VAL:HG12	2.07	0.54
2:B:102:LYS:HE2	4:B:568:HOH:O	1.74	0.54
1:A:21:VAL:HB	1:A:59:PRO:HD3	1.90	0.54
2:B:357:MET:CE	2:B:370[A]:GLU:CB	2.86	0.54
1:A:317:VAL:HG23	1:A:349:LEU:HD12	1.90	0.53
1:A:548:VAL:O	1:A:552:VAL:HG13	2.08	0.53
1:A:543:GLY:HA3	2:B:284:ARG:C	2.26	0.53
1:A:383:TRP:CE2	4:A:788:HOH:O	2.54	0.52
2:B:286:THR:O	2:B:286:THR:HG22	2.09	0.52
1:A:50:ILE:HD11	4:A:745:HOH:O	2.08	0.52
2:B:357:MET:CE	2:B:370[A]:GLU:HB2	2.40	0.52
1:A:31:ILE:O	1:A:35:VAL:HG23	2.10	0.51
1:A:234:LEU:HD12	4:A:775:HOH:O	2.09	0.51
1:A:251:SER:HB2	4:A:863:HOH:O	2.11	0.51
1:A:111:VAL:O	1:A:111:VAL:HG23	2.11	0.51
1:A:38:CYS:SG	1:A:132:ILE:HD11	2.51	0.51
1:A:460:ASN:HA	2:B:286:THR:O	2.11	0.50
2:B:121:ASP:O	2:B:125:ARG:HG3	2.09	0.50
1:A:11:LYS:HB3	4:A:727:HOH:O	2.10	0.50
2:B:75:VAL:HG11	2:B:77:PHE:CZ	2.47	0.50
1:A:8:VAL:HB	1:A:159:ILE:HD13	1.93	0.50
1:A:4:PRO:HB2	4:A:736:HOH:O	2.11	0.50
1:A:74:LEU:C	4:A:702:HOH:O	2.49	0.50
1:A:428:GLN:HG3	4:A:756:HOH:O	2.12	0.50
1:A:541:GLY:HA2	1:A:546:GLU:HB2	1.92	0.50

Continued on next page...

Continued from previous page...

Atom-1	Atom-2	Interatomic distance (Å)	Clash overlap (Å)
1:A:23:GLN:HG2	1:A:133:PRO:HD3	1.93	0.50
2:B:427:TYR:CD2	4:B:551:HOH:O	2.41	0.50
1:A:325:LEU:HD13	1:A:387:PRO:HB3	1.94	0.49
2:B:47:ILE:HD12	2:B:144:TYR:CD1	2.47	0.49
2:B:21:VAL:HB	2:B:59:PRO:HD3	1.94	0.49
2:B:166:LYS:HD2	4:B:596:HOH:O	2.11	0.49
2:B:69:THR:HA	4:B:573:HOH:O	2.13	0.48
1:A:19:PRO:HD2	4:A:847:HOH:O	2.14	0.48
1:A:73:LYS:CG	4:A:702:HOH:O	2.53	0.48
2:B:421:PRO:HB3	2:B:423:VAL:HG12	1.94	0.48
1:A:26:LEU:HD13	4:A:718:HOH:O	2.14	0.48
1:A:157:PRO:HD3	4:A:837:HOH:O	2.13	0.48
1:A:299:ALA:CB	4:A:764:HOH:O	2.61	0.48
1:A:-1:MET:HG3	4:A:758:HOH:O	2.13	0.47
2:B:241:VAL:HG23	2:B:242:GLN:N	2.29	0.47
1:A:373[A]:GLN:NE2	2:B:397:THR:OG1	2.48	0.47
1:A:110:ASP:OD1	1:A:110:ASP:O	2.32	0.47
2:B:56:TYR:CD1	4:B:525:HOH:O	2.55	0.47
1:A:68:SER:O	1:A:70:LYS:N	2.46	0.47
1:A:67:ASP:HA	4:A:823:HOH:O	2.14	0.47
1:A:442:VAL:HB	1:A:481:ALA:HB1	1.97	0.47
2:B:355:ALA:HB1	4:B:513:HOH:O	2.14	0.47
1:A:405:TYR:CE2	1:A:407:GLN:HB2	2.50	0.47
2:B:55:PRO:HG2	4:B:525:HOH:O	2.15	0.46
2:B:175:ASN:HB3	2:B:178:ILE:HG12	1.97	0.46
1:A:20:LYS:HG2	1:A:55:PRO:O	2.15	0.46
1:A:428:GLN:CG	4:A:756:HOH:O	2.63	0.46
2:B:423:VAL:HA	2:B:426:TRP:CD1	2.50	0.46
2:B:171:PHE:CD1	2:B:208:HIS:NE2	2.84	0.46
2:B:236:PRO:HA	2:B:239:TRP:CD2	2.51	0.46
1:A:217:PRO:CG	4:A:701:HOH:O	2.63	0.46
1:A:411:ILE:CG1	4:A:798:HOH:O	2.64	0.46
2:B:102:LYS:HE3	4:B:568:HOH:O	1.75	0.45
2:B:156:SER:N	2:B:157:PRO:HD2	2.32	0.45
2:B:171:PHE:HD1	2:B:208:HIS:NE2	2.15	0.45
1:A:234:LEU:CD1	4:A:775:HOH:O	2.64	0.45
1:A:317:VAL:CG2	1:A:349:LEU:HD12	2.47	0.45
2:B:145:GLN:N	4:B:503:HOH:O	2.49	0.45
1:A:118:VAL:HG11	1:A:149:LEU:HD11	1.98	0.45
1:A:73:LYS:HG3	4:A:702:HOH:O	2.16	0.45
2:B:171:PHE:HD1	2:B:208:HIS:HE2	1.64	0.45

Continued on next page...

Continued from previous page...

Atom-1	Atom-2	Interatomic distance (Å)	Clash overlap (Å)
1:A:18:GLY:O	1:A:83:ARG:NH1	2.50	0.45
1:A:217:PRO:CD	4:A:701:HOH:O	2.64	0.45
1:A:58:THR:HG23	4:A:784:HOH:O	2.16	0.44
1:A:548:VAL:HG22	4:A:714:HOH:O	2.17	0.44
2:B:357:MET:HE3	2:B:370[A]:GLU:HB3	1.99	0.44
1:A:452:LEU:CD2	1:A:470:THR:HG22	2.47	0.44
1:A:486:LEU:HD11	4:A:851:HOH:O	2.16	0.44
1:A:246:LEU:HD12	1:A:307:ARG:HG2	1.99	0.44
1:A:145:GLN:CB	4:A:717:HOH:O	2.66	0.44
2:B:142:ILE:HG22	2:B:144:TYR:CE2	2.53	0.44
1:A:320:ASP:CG	1:A:323:LYS:HE3	2.27	0.43
1:A:389:PHE:O	1:A:414:TRP:HA	2.17	0.43
2:B:333:GLY:O	2:B:336:GLN:HG3	2.18	0.43
1:A:264:LEU:O	1:A:274:ILE:HG21	2.17	0.43
1:A:429:LEU:HD11	1:A:506:ILE:CG2	2.48	0.43
1:A:429:LEU:HD11	1:A:506:ILE:HG22	2.00	0.43
2:B:66:LYS:HE2	2:B:358:ARG:NE	2.34	0.43
1:A:118:VAL:CG1	1:A:149:LEU:HD11	2.48	0.43
1:A:252:TRP:CG	1:A:295:LEU:HD11	2.53	0.43
1:A:443:ASP:CB	1:A:548:VAL:HG13	2.48	0.43
1:A:459:THR:O	2:B:286:THR:HG21	2.17	0.43
1:A:50:ILE:HD12	1:A:54:ASN:HB3	2.01	0.43
2:B:324:ASP:O	2:B:343:GLN:HG2	2.19	0.43
1:A:294:PRO:HD2	4:A:871:HOH:O	2.18	0.43
1:A:225:PRO:HG2	3:A:601:VM5:O4	2.19	0.43
1:A:442:VAL:HG12	1:A:457:TYR:HB3	2.00	0.42
1:A:90:VAL:HG11	2:B:140:PRO:HA	2.02	0.42
2:B:64:LYS:HE3	2:B:71:TRP:CE2	2.55	0.42
2:B:213:GLY:CA	4:B:511:HOH:O	2.61	0.42
2:B:206:ARG:NH2	4:B:507:HOH:O	2.52	0.42
1:A:171:PHE:CD2	1:A:205:LEU:HD13	2.54	0.42
2:B:175:ASN:HD21	2:B:201:LYS:NZ	2.17	0.42
1:A:95:PRO:HA	2:B:136:ASN:O	2.19	0.42
1:A:417:VAL:HG22	1:A:419:THR:HG23	2.02	0.41
1:A:541:GLY:CA	1:A:546:GLU:HB2	2.50	0.41
3:A:601:VM5:C7	4:A:775:HOH:O	2.67	0.41
2:B:76:ASP:OD1	2:B:76:ASP:C	2.58	0.41
2:B:107:THR:HA	2:B:232:TYR:O	2.21	0.41
1:A:101:LYS:HD2	4:A:800:HOH:O	2.20	0.41
1:A:545:ASN:O	1:A:549:ASP:HB2	2.21	0.41
2:B:260:LEU:HD21	2:B:303:LEU:HD13	2.02	0.41

Continued on next page...

Continued from previous page...

Atom-1	Atom-2	Interatomic distance (Å)	Clash overlap (Å)
1:A:459:THR:C	2:B:286:THR:CG2	2.89	0.41
1:A:172:ALA:O	1:A:175:ASN:O	2.38	0.41
1:A:103:LYS:HA	1:A:192:ASP:OD1	2.21	0.41
1:A:441:TYR:O	1:A:457:TYR:HA	2.21	0.41
2:B:354:TYR:OH	2:B:378:GLU:OE2	2.36	0.41
1:A:325:LEU:HD23	1:A:325:LEU:HA	1.78	0.40
2:B:183:TYR:CE2	2:B:184:MET:HG2	2.57	0.40

All (1) symmetry-related close contacts are listed below. The label for Atom-2 includes the symmetry operator and encoded unit-cell translations to be applied.

Atom-1	Atom-2	Interatomic distance (Å)	Clash overlap (Å)
1:A:194:GLU:OE2	2:B:172:LYS:NZ[1_545]	2.12	0.08

5.3 Torsion angles [i](#)

5.3.1 Protein backbone [i](#)

In the following table, the Percentiles column shows the percent Ramachandran outliers of the chain as a percentile score with respect to all X-ray entries followed by that with respect to entries of similar resolution.

The Analysed column shows the number of residues for which the backbone conformation was analysed, and the total number of residues.

Mol	Chain	Analysed	Favoured	Allowed	Outliers	Percentiles	
1	A	556/557 (100%)	521 (94%)	34 (6%)	1 (0%)	47	62
2	B	415/429 (97%)	392 (94%)	21 (5%)	2 (0%)	29	41
All	All	971/986 (98%)	913 (94%)	55 (6%)	3 (0%)	41	55

All (3) Ramachandran outliers are listed below:

Mol	Chain	Res	Type
2	B	14	PRO
1	A	69	THR
2	B	272	PRO

5.3.2 Protein sidechains [i](#)

In the following table, the Percentiles column shows the percent sidechain outliers of the chain as a percentile score with respect to all X-ray entries followed by that with respect to entries of similar resolution.

The Analysed column shows the number of residues for which the sidechain conformation was analysed, and the total number of residues.

Mol	Chain	Analysed	Rotameric	Outliers	Percentiles	
1	A	497/495 (100%)	485 (98%)	12 (2%)	49	68
2	B	380/390 (97%)	374 (98%)	6 (2%)	62	79
All	All	877/885 (99%)	859 (98%)	18 (2%)	53	72

All (18) residues with a non-rotameric sidechain are listed below:

Mol	Chain	Res	Type
1	A	105	SER
1	A	117	SER
1	A	159	ILE
1	A	166	LYS
1	A	314	VAL
1	A	325	LEU
1	A	338	THR
1	A	363	ASN
1	A	459	THR
1	A	471	ASN
1	A	545	ASN
1	A	548	VAL
2	B	7	THR
2	B	14	PRO
2	B	200	THR
2	B	232	TYR
2	B	388	LYS
2	B	425	LEU

Sometimes sidechains can be flipped to improve hydrogen bonding and reduce clashes. All (8) such sidechains are listed below:

Mol	Chain	Res	Type
1	A	91	GLN
1	A	182	GLN
1	A	255	ASN
1	A	258	GLN

Continued on next page...

Continued from previous page...

Mol	Chain	Res	Type
2	B	91	GLN
2	B	137	ASN
2	B	161	GLN
2	B	175	ASN

5.3.3 RNA [i](#)

There are no RNA molecules in this entry.

5.4 Non-standard residues in protein, DNA, RNA chains [i](#)

There are no non-standard protein/DNA/RNA residues in this entry.

5.5 Carbohydrates [i](#)

There are no monosaccharides in this entry.

5.6 Ligand geometry [i](#)

1 ligand is modelled in this entry.

In the following table, the Counts columns list the number of bonds (or angles) for which Mogul statistics could be retrieved, the number of bonds (or angles) that are observed in the model and the number of bonds (or angles) that are defined in the Chemical Component Dictionary. The Link column lists molecule types, if any, to which the group is linked. The Z score for a bond length (or angle) is the number of standard deviations the observed value is removed from the expected value. A bond length (or angle) with $|Z| > 2$ is considered an outlier worth inspection. RMSZ is the root-mean-square of all Z scores of the bond lengths (or angles).

Mol	Type	Chain	Res	Link	Bond lengths			Bond angles		
					Counts	RMSZ	# Z > 2	Counts	RMSZ	# Z > 2
3	VM5	A	601	-	35,35,35	2.82	9 (25%)	51,51,51	2.15	15 (29%)

In the following table, the Chirals column lists the number of chiral outliers, the number of chiral centers analysed, the number of these observed in the model and the number defined in the Chemical Component Dictionary. Similar counts are reported in the Torsion and Rings columns. '-' means no outliers of that kind were identified.

Mol	Type	Chain	Res	Link	Chirals	Torsions	Rings
3	VM5	A	601	-	-	3/20/20/20	0/3/3/3

All (9) bond length outliers are listed below:

Mol	Chain	Res	Type	Atoms	Z	Observed(Å)	Ideal(Å)
3	A	601	VM5	C19-S	8.48	1.90	1.77
3	A	601	VM5	F-C13	7.02	1.46	1.35
3	A	601	VM5	C14-C12	-6.92	1.41	1.51
3	A	601	VM5	O3-S	4.55	1.52	1.43
3	A	601	VM5	O4-S	4.19	1.51	1.43
3	A	601	VM5	C16-N2	-4.05	1.34	1.41
3	A	601	VM5	C21-CL2	3.80	1.82	1.73
3	A	601	VM5	C3-CL1	3.26	1.81	1.74
3	A	601	VM5	C1-C7	2.71	1.50	1.44

All (15) bond angle outliers are listed below:

Mol	Chain	Res	Type	Atoms	Z	Observed(°)	Ideal(°)
3	A	601	VM5	C12-C14-C15	-6.62	100.67	113.43
3	A	601	VM5	C21-C20-C19	5.19	122.11	118.80
3	A	601	VM5	C11-C12-C13	5.05	120.10	116.43
3	A	601	VM5	C20-C21-C16	-4.67	117.89	121.72
3	A	601	VM5	O4-S-O3	-4.15	111.94	118.76
3	A	601	VM5	O1-C8-C9	-2.94	116.36	120.55
3	A	601	VM5	O3-S-N3	2.92	111.69	107.36
3	A	601	VM5	C13-C8-C9	2.83	122.31	116.86
3	A	601	VM5	C16-C21-CL2	2.33	122.19	119.54
3	A	601	VM5	O2-C15-N2	2.31	127.84	123.63
3	A	601	VM5	C4-C3-CL1	2.13	121.81	119.15
3	A	601	VM5	C21-C16-N2	-2.13	115.88	119.24
3	A	601	VM5	C8-C13-C12	-2.12	118.09	121.38
3	A	601	VM5	BR-C9-C10	2.05	121.80	117.81
3	A	601	VM5	O4-S-N3	2.05	110.40	107.36

There are no chirality outliers.

All (3) torsion outliers are listed below:

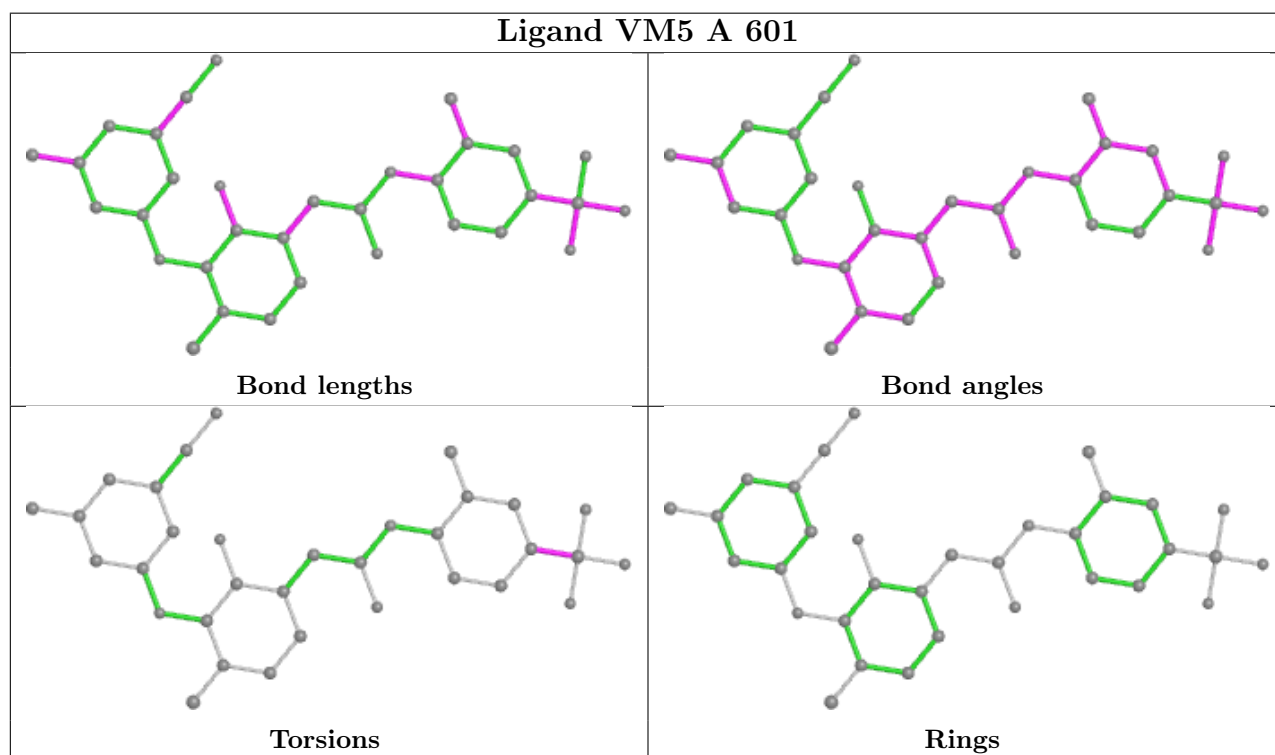
Mol	Chain	Res	Type	Atoms
3	A	601	VM5	C20-C19-S-O3
3	A	601	VM5	C18-C19-S-O3
3	A	601	VM5	C20-C19-S-N3

There are no ring outliers.

1 monomer is involved in 2 short contacts:

Mol	Chain	Res	Type	Clashes	Symm-Clashes
3	A	601	VM5	2	0

The following is a two-dimensional graphical depiction of Mogul quality analysis of bond lengths, bond angles, torsion angles, and ring geometry for all instances of the Ligand of Interest. In addition, ligands with molecular weight > 250 and outliers as shown on the validation Tables will also be included. For torsion angles, if less than 5% of the Mogul distribution of torsion angles is within 10 degrees of the torsion angle in question, then that torsion angle is considered an outlier. Any bond that is central to one or more torsion angles identified as an outlier by Mogul will be highlighted in the graph. For rings, the root-mean-square deviation (RMSD) between the ring in question and similar rings identified by Mogul is calculated over all ring torsion angles. If the average RMSD is greater than 60 degrees and the minimal RMSD between the ring in question and any Mogul-identified rings is also greater than 60 degrees, then that ring is considered an outlier. The outliers are highlighted in purple. The color gray indicates Mogul did not find sufficient equivalents in the CSD to analyse the geometry.



5.7 Other polymers [i](#)

There are no such residues in this entry.

5.8 Polymer linkage issues [i](#)

There are no chain breaks in this entry.

6 Fit of model and data [i](#)

6.1 Protein, DNA and RNA chains [i](#)

In the following table, the column labelled ‘#RSRZ > 2’ contains the number (and percentage) of RSRZ outliers, followed by percent RSRZ outliers for the chain as percentile scores relative to all X-ray entries and entries of similar resolution. The OWAB column contains the minimum, median, 95th percentile and maximum values of the occupancy-weighted average B-factor per residue. The column labelled ‘Q < 0.9’ lists the number of (and percentage) of residues with an average occupancy less than 0.9.

Mol	Chain	Analysed	<RSRZ>	#RSRZ>2	OWAB(Å ²)	Q<0.9
1	A	556/557 (99%)	0.90	91 (16%) 1 1	44, 90, 167, 221	0
2	B	416/429 (96%)	0.87	47 (11%) 5 4	50, 83, 166, 227	0
All	All	972/986 (98%)	0.89	138 (14%) 2 2	44, 87, 167, 227	0

All (138) RSRZ outliers are listed below:

Mol	Chain	Res	Type	RSRZ
1	A	552	VAL	14.7
2	B	90	VAL	14.5
1	A	548	VAL	14.3
2	B	91	GLN	13.6
2	B	227	PHE	13.5
1	A	549	ASP	11.9
2	B	232	TYR	11.8
1	A	550	LYS	11.5
1	A	221	HIS	11.4
1	A	546	GLU	11.0
1	A	544	GLY	10.0
1	A	551	LEU	9.9
2	B	92	LEU	9.8
1	A	246	LEU	9.2
1	A	553	SER	9.1
1	A	252	TRP	8.1
1	A	67	ASP	7.8
2	B	231	GLY	7.7
2	B	359	GLY	7.7
1	A	290	THR	7.4
1	A	261	VAL	6.8
2	B	356	ARG	6.7
1	A	216	THR	6.6
2	B	230	MET	6.4

Continued on next page...

Continued from previous page...

Mol	Chain	Res	Type	RSRZ
1	A	114	ALA	6.4
2	B	358	ARG	6.3
2	B	87	PHE	6.2
1	A	297	GLU	6.1
2	B	67	ASP	6.0
2	B	214	LEU	6.0
1	A	187	LEU	5.8
1	A	257	ILE	5.8
1	A	245	VAL	5.7
2	B	212	TRP	5.7
1	A	218	ASP	5.6
1	A	217	PRO	5.4
2	B	89	GLU	5.4
1	A	260	LEU	5.3
1	A	250	ASP	5.3
2	B	168	LEU	5.1
1	A	292	VAL	5.1
1	A	247	PRO	5.0
1	A	244	ILE	5.0
2	B	66	LYS	4.8
2	B	226	PRO	4.8
1	A	214	LEU	4.7
1	A	215	THR	4.7
1	A	298	GLU	4.6
2	B	95	PRO	4.6
1	A	287	LYS	4.6
2	B	241	VAL	4.5
1	A	188	TYR	4.3
2	B	209	LEU	4.2
1	A	302	GLU	4.2
2	B	93	GLY	4.2
1	A	116	PHE	4.1
2	B	233	GLU	4.1
1	A	554	ALA	4.0
2	B	5	ILE	3.8
1	A	295	LEU	3.8
2	B	357	MET	3.8
1	A	263	LYS	3.8
2	B	240	THR	3.8
2	B	205	LEU	3.7
2	B	88	TRP	3.7
2	B	171	PHE	3.7

Continued on next page...

Continued from previous page...

Mol	Chain	Res	Type	RSRZ
1	A	124	PHE	3.6
1	A	10	VAL	3.6
1	A	306	ASN	3.6
1	A	547	GLN	3.5
2	B	195	ILE	3.5
1	A	117	SER	3.5
1	A	256	ASP	3.5
1	A	304	ALA	3.5
1	A	222	GLN	3.5
2	B	229	TRP	3.5
1	A	113	ASP	3.4
1	A	278	GLN	3.4
1	A	279	LEU	3.3
1	A	181	TYR	3.3
2	B	172	LYS	3.3
1	A	301	LEU	3.3
2	B	225	PRO	3.3
2	B	94	ILE	3.2
1	A	109	LEU	3.2
1	A	160	PHE	3.1
2	B	208	HIS	3.1
1	A	202	ILE	3.1
1	A	90	VAL	3.1
2	B	202	ILE	3.1
1	A	277	ARG	3.0
1	A	305	GLU	3.0
1	A	213	GLY	3.0
1	A	254	VAL	3.0
1	A	282	LEU	2.9
1	A	19	PRO	2.9
1	A	108	VAL	2.8
2	B	149	LEU	2.8
1	A	24	TRP	2.8
1	A	358	ARG	2.8
2	B	198	HIS	2.7
1	A	264	LEU	2.7
1	A	21	VAL	2.6
1	A	130	PHE	2.6
1	A	262	GLY	2.6
1	A	543	GLY	2.5
2	B	238	LYS	2.5
1	A	73	LYS	2.5

Continued on next page...

Continued from previous page...

Mol	Chain	Res	Type	RSRZ
2	B	210	LEU	2.5
1	A	249	LYS	2.4
1	A	296	THR	2.4
1	A	184	MET	2.4
1	A	227	PHE	2.4
1	A	545	ASN	2.3
1	A	275	LYS	2.3
2	B	315[A]	HIS	2.3
1	A	300	GLU	2.3
1	A	127	TYR	2.3
1	A	248	GLU	2.3
1	A	308	GLU	2.3
2	B	197	GLN	2.2
1	A	205	LEU	2.2
1	A	66	LYS	2.2
2	B	191	SER	2.2
1	A	309	ILE	2.1
1	A	111	VAL	2.1
1	A	291	GLU	2.1
2	B	428	GLN	2.1
1	A	276	VAL	2.1
1	A	26	LEU	2.1
1	A	115	TYR	2.1
1	A	180	ILE	2.1
2	B	234	LEU	2.1
2	B	360	ALA	2.0
1	A	161	GLN	2.0
2	B	109	LEU	2.0
1	A	259	LYS	2.0
1	A	112	GLY	2.0

6.2 Non-standard residues in protein, DNA, RNA chains [i](#)

There are no non-standard protein/DNA/RNA residues in this entry.

6.3 Carbohydrates [i](#)

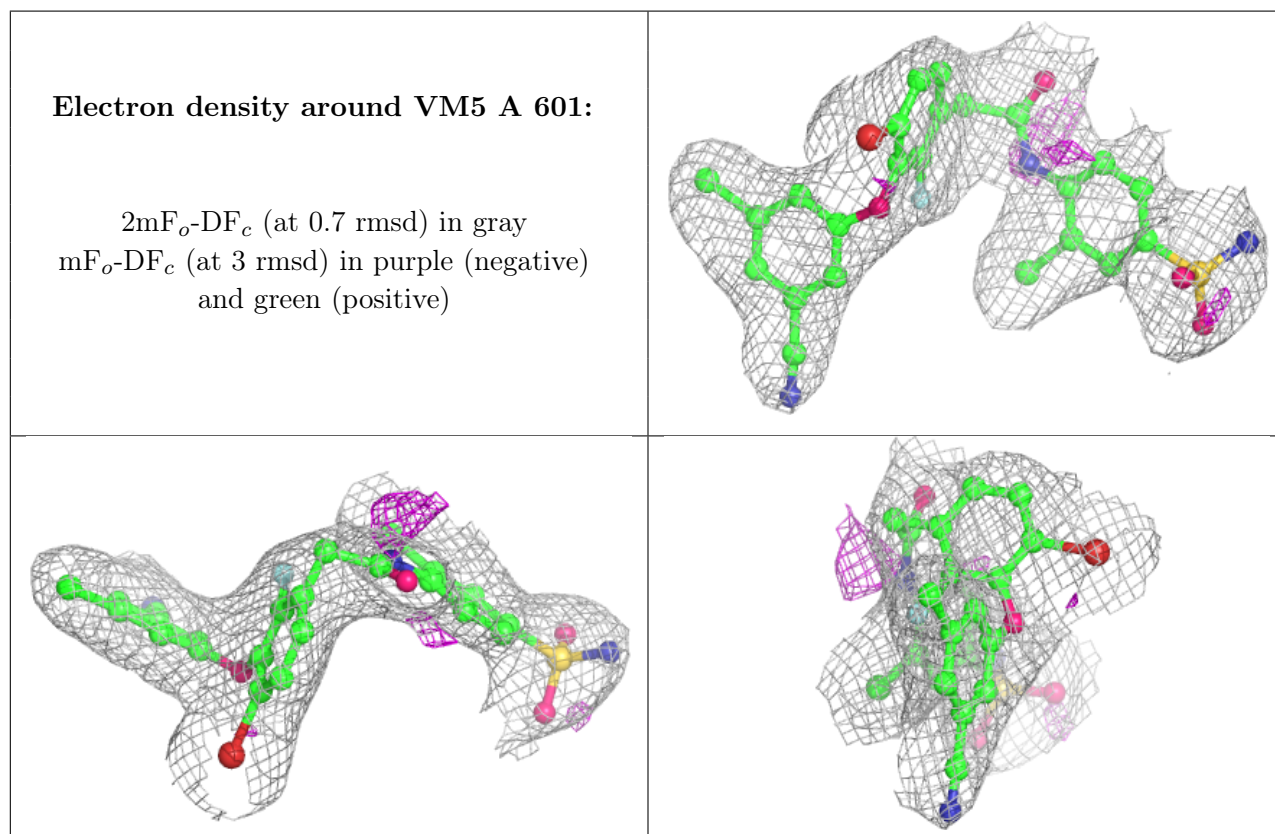
There are no monosaccharides in this entry.

6.4 Ligands [i](#)

In the following table, the Atoms column lists the number of modelled atoms in the group and the number defined in the chemical component dictionary. The B-factors column lists the minimum, median, 95th percentile and maximum values of B factors of atoms in the group. The column labelled 'Q< 0.9' lists the number of atoms with occupancy less than 0.9.

Mol	Type	Chain	Res	Atoms	RSCC	RSR	B-factors(Å ²)	Q<0.9
3	VM5	A	601	33/33	0.97	0.15	58,74,99,101	0

The following is a graphical depiction of the model fit to experimental electron density of all instances of the Ligand of Interest. In addition, ligands with molecular weight > 250 and outliers as shown on the geometry validation Tables will also be included. Each fit is shown from different orientation to approximate a three-dimensional view.



6.5 Other polymers [i](#)

There are no such residues in this entry.