



Full wwPDB X-ray Structure Validation Report ⓘ

Oct 9, 2023 – 10:44 PM EDT

PDB ID : 7TBB
Title : Crystal structure of Plasmepsin X from Plasmodium falciparum
Authors : Christensen, J.B.; Hodder, A.N.; Dietrich, M.H.; Scally, S.W.; Cowman, A.F.
Deposited on : 2021-12-21
Resolution : 1.85 Å(reported)

This is a Full wwPDB X-ray Structure Validation Report for a publicly released PDB entry.

We welcome your comments at validation@mail.wwpdb.org

A user guide is available at

<https://www.wwpdb.org/validation/2017/XrayValidationReportHelp>

with specific help available everywhere you see the ⓘ symbol.

The types of validation reports are described at

<http://www.wwpdb.org/validation/2017/FAQs#types>.

The following versions of software and data (see [references ⓘ](#)) were used in the production of this report:

MolProbity : 4.02b-467
Mogul : 1.8.5 (274361), CSD as541be (2020)
Xtrriage (Phenix) : 1.13
EDS : 2.35.1
Percentile statistics : 20191225.v01 (using entries in the PDB archive December 25th 2019)
Refmac : 5.8.0158
CCP4 : 7.0.044 (Gargrove)
Ideal geometry (proteins) : Engh & Huber (2001)
Ideal geometry (DNA, RNA) : Parkinson et al. (1996)
Validation Pipeline (wwPDB-VP) : 2.35.1

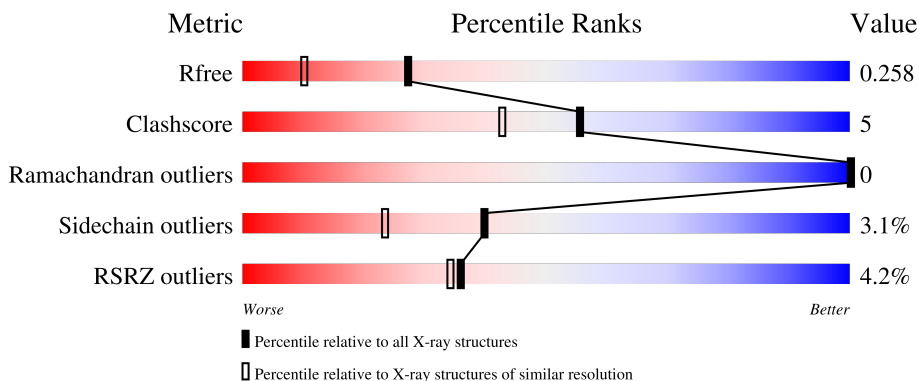
1 Overall quality at a glance

The following experimental techniques were used to determine the structure:

X-RAY DIFFRACTION

The reported resolution of this entry is 1.85 Å.

Percentile scores (ranging between 0-100) for global validation metrics of the entry are shown in the following graphic. The table shows the number of entries on which the scores are based.



Metric	Whole archive (#Entries)	Similar resolution (#Entries, resolution range(Å))
R_{free}	130704	2469 (1.86-1.86)
Clashscore	141614	2625 (1.86-1.86)
Ramachandran outliers	138981	2592 (1.86-1.86)
Sidechain outliers	138945	2592 (1.86-1.86)
RSRZ outliers	127900	2436 (1.86-1.86)

The table below summarises the geometric issues observed across the polymeric chains and their fit to the electron density. The red, orange, yellow and green segments of the lower bar indicate the fraction of residues that contain outliers for ≥ 3 , 2, 1 and 0 types of geometric quality criteria respectively. A grey segment represents the fraction of residues that are not modelled. The numeric value for each fraction is indicated below the corresponding segment, with a dot representing fractions $\leq 5\%$. The upper red bar (where present) indicates the fraction of residues that have poor fit to the electron density. The numeric value is given above the bar.

Mol	Chain	Length	Quality of chain
1	A	377	

The following table lists non-polymeric compounds, carbohydrate monomers and non-standard residues in protein, DNA, RNA chains that are outliers for geometric or electron-density-fit criteria:

Mol	Type	Chain	Res	Chirality	Geometry	Clashes	Electron density
3	ACT	A	602	-	-	X	-

2 Entry composition

There are 5 unique types of molecules in this entry. The entry contains 2823 atoms, of which 0 are hydrogens and 0 are deuteriums.

In the tables below, the ZeroOcc column contains the number of atoms modelled with zero occupancy, the AltConf column contains the number of residues with at least one atom in alternate conformation and the Trace column contains the number of residues modelled with at most 2 atoms.

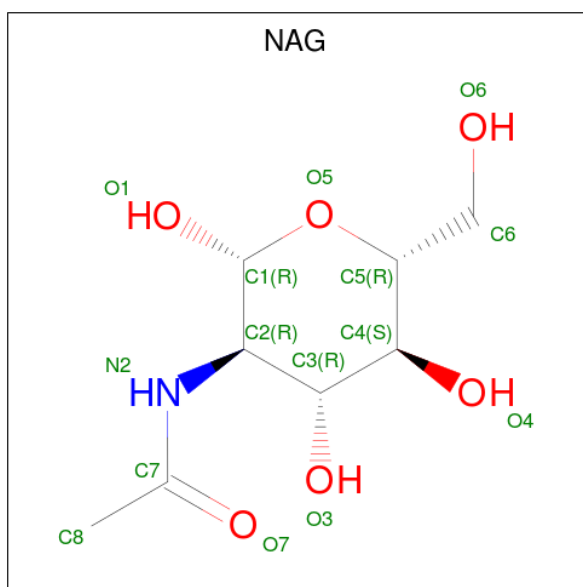
- Molecule 1 is a protein called Plasmepsin 10.

Mol	Chain	Residues	Atoms					ZeroOcc	AltConf	Trace
			Total	C	N	O	S			
1	A	332	2620	1690	418	496	16	0	0	0

There are 15 discrepancies between the modelled and reference sequences:

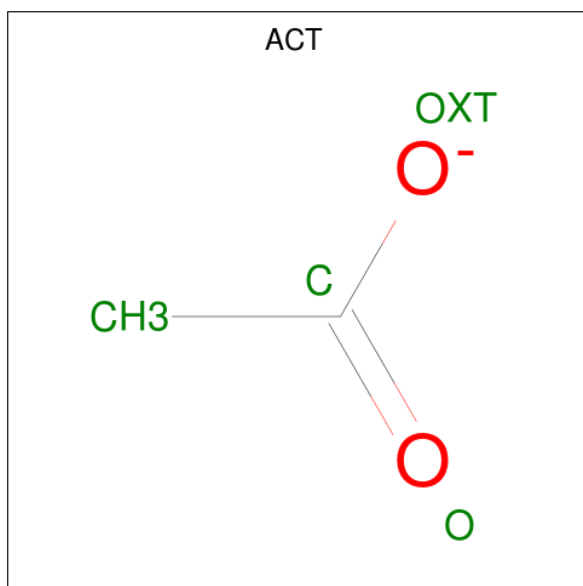
Chain	Residue	Modelled	Actual	Comment	Reference
A	574	GLU	-	expression tag	UNP Q2KNW6
A	575	ASN	-	expression tag	UNP Q2KNW6
A	576	LEU	-	expression tag	UNP Q2KNW6
A	577	TYR	-	expression tag	UNP Q2KNW6
A	578	PHE	-	expression tag	UNP Q2KNW6
A	579	GLN	-	expression tag	UNP Q2KNW6
A	580	GLY	-	expression tag	UNP Q2KNW6
A	581	HIS	-	expression tag	UNP Q2KNW6
A	582	HIS	-	expression tag	UNP Q2KNW6
A	583	HIS	-	expression tag	UNP Q2KNW6
A	584	HIS	-	expression tag	UNP Q2KNW6
A	585	HIS	-	expression tag	UNP Q2KNW6
A	586	HIS	-	expression tag	UNP Q2KNW6
A	587	HIS	-	expression tag	UNP Q2KNW6
A	588	HIS	-	expression tag	UNP Q2KNW6

- Molecule 2 is 2-acetamido-2-deoxy-beta-D-glucopyranose (three-letter code: NAG) (formula: $C_8H_{15}NO_6$).



Mol	Chain	Residues	Atoms			ZeroOcc	AltConf	
			Total	C	N			O
2	A	1	14	8	1	5	0	0

- Molecule 3 is ACETATE ION (three-letter code: ACT) (formula: $C_2H_3O_2$).



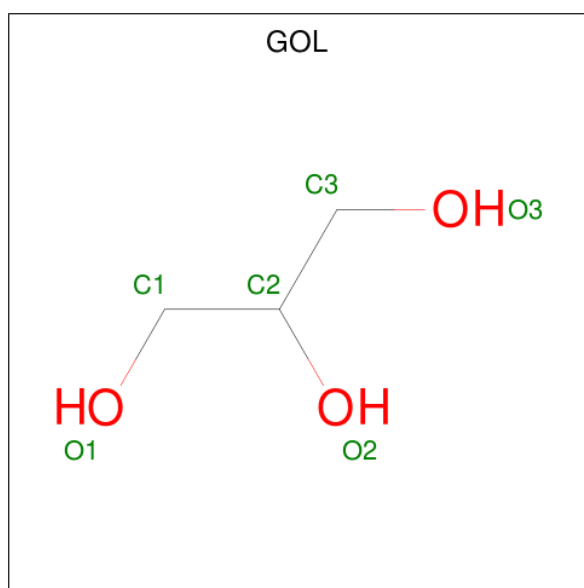
Mol	Chain	Residues	Atoms			ZeroOcc	AltConf
			Total	C	O		
3	A	1	4	2	2	0	0
3	A	1	4	2	2	0	0
3	A	1	4	2	2	0	0

Continued on next page...

Continued from previous page...

Mol	Chain	Residues	Atoms			ZeroOcc	AltConf
3	A	1	Total	C	O	0	0
			4	2	2		
3	A	1	Total	C	O	0	0
			4	2	2		
3	A	1	Total	C	O	0	0
			4	2	2		
3	A	1	Total	C	O	0	0
			4	2	2		

- Molecule 4 is GLYCEROL (three-letter code: GOL) (formula: $C_3H_8O_3$).



Mol	Chain	Residues	Atoms			ZeroOcc	AltConf
4	A	1	Total	C	O	0	0
			6	3	3		

- Molecule 5 is water.

Mol	Chain	Residues	Atoms		ZeroOcc	AltConf
5	A	151	Total	O	0	0
			151	151		

4 Data and refinement statistics

Property	Value	Source
Space group	P 21 21 21	Depositor
Cell constants a, b, c, α , β , γ	62.31Å 63.15Å 79.34Å 90.00° 90.00° 90.00°	Depositor
Resolution (Å)	33.59 – 1.85 44.35 – 1.85	Depositor EDS
% Data completeness (in resolution range)	99.9 (33.59-1.85) 100.0 (44.35-1.85)	Depositor EDS
R_{merge}	(Not available)	Depositor
R_{sym}	(Not available)	Depositor
$\langle I/\sigma(I) \rangle$ ¹	1.44 (at 1.86Å)	Xtrriage
Refinement program	PHENIX 1.19.2_4158	Depositor
R, R_{free}	0.208 , 0.260 0.206 , 0.258	Depositor DCC
R_{free} test set	1998 reflections (7.30%)	wwPDB-VP
Wilson B-factor (Å ²)	30.8	Xtrriage
Anisotropy	0.753	Xtrriage
Bulk solvent k_{sol} (e/Å ³), B_{sol} (Å ²)	0.34 , 47.8	EDS
L-test for twinning ²	$\langle L \rangle = 0.50$, $\langle L^2 \rangle = 0.33$	Xtrriage
Estimated twinning fraction	0.021 for k,h,-l	Xtrriage
F_o, F_c correlation	0.96	EDS
Total number of atoms	2823	wwPDB-VP
Average B, all atoms (Å ²)	37.0	wwPDB-VP

Xtrriage's analysis on translational NCS is as follows: *The largest off-origin peak in the Patterson function is 6.54% of the height of the origin peak. No significant pseudotranslation is detected.*

¹Intensities estimated from amplitudes.

²Theoretical values of $\langle |L| \rangle$, $\langle L^2 \rangle$ for acentric reflections are 0.5, 0.333 respectively for untwinned datasets, and 0.375, 0.2 for perfectly twinned datasets.

5 Model quality [i](#)

5.1 Standard geometry [i](#)

Bond lengths and bond angles in the following residue types are not validated in this section: ACT, GOL, NAG

The Z score for a bond length (or angle) is the number of standard deviations the observed value is removed from the expected value. A bond length (or angle) with $|Z| > 5$ is considered an outlier worth inspection. RMSZ is the root-mean-square of all Z scores of the bond lengths (or angles).

Mol	Chain	Bond lengths		Bond angles	
		RMSZ	# Z >5	RMSZ	# Z >5
1	A	0.39	0/2682	0.61	0/3631

There are no bond length outliers.

There are no bond angle outliers.

There are no chirality outliers.

There are no planarity outliers.

5.2 Too-close contacts [i](#)

In the following table, the Non-H and H(model) columns list the number of non-hydrogen atoms and hydrogen atoms in the chain respectively. The H(added) column lists the number of hydrogen atoms added and optimized by MolProbity. The Clashes column lists the number of clashes within the asymmetric unit, whereas Symm-Clashes lists symmetry-related clashes.

Mol	Chain	Non-H	H(model)	H(added)	Clashes	Symm-Clashes
1	A	2620	0	2550	27	0
2	A	14	0	13	0	0
3	A	32	0	24	2	0
4	A	6	0	8	0	0
5	A	151	0	0	2	0
All	All	2823	0	2595	27	0

The all-atom clashscore is defined as the number of clashes found per 1000 atoms (including hydrogen atoms). The all-atom clashscore for this structure is 5.

All (27) close contacts within the same asymmetric unit are listed below, sorted by their clash magnitude.

Atom-1	Atom-2	Interatomic distance (Å)	Clash overlap (Å)
1:A:246:SER:HB3	1:A:542:SER:OG	1.91	0.70
1:A:435:LYS:NZ	1:A:437:ASP:OD1	2.26	0.67
1:A:304:GLU:OE1	5:A:701:HOH:O	2.15	0.63
1:A:498:LYS:HG2	1:A:507:GLU:HG2	1.85	0.59
1:A:530:VAL:O	1:A:534:ARG:HB3	2.03	0.58
1:A:427:LEU:HD11	1:A:435:LYS:HB2	1.86	0.56
1:A:532:SER:HA	1:A:534:ARG:HB2	1.89	0.54
1:A:515:ILE:HG12	1:A:524:ALA:HB2	1.91	0.53
1:A:318:GLY:HA3	1:A:339:LEU:O	2.08	0.53
1:A:242:HIS:CE1	1:A:543:LEU:HD11	2.46	0.51
1:A:242:HIS:HB2	1:A:248:PHE:CE2	2.46	0.51
1:A:275:VAL:HA	1:A:340:VAL:HB	1.93	0.51
1:A:457:ASP:O	1:A:460:THR:HG22	2.10	0.51
1:A:261:VAL:HG23	1:A:361:GLU:HB3	1.95	0.48
1:A:466:PRO:HD2	1:A:538:TYR:CE2	2.48	0.48
1:A:309:ILE:HG22	1:A:310:VAL:O	2.14	0.48
1:A:570:LYS:HE3	3:A:602:ACT:H2	1.96	0.47
1:A:543:LEU:HD23	1:A:543:LEU:HA	1.63	0.44
1:A:506:ILE:HD13	1:A:545:PHE:HE1	1.82	0.44
1:A:506:ILE:HD13	1:A:545:PHE:CE1	2.53	0.44
1:A:244:ARG:HD2	1:A:245:ASP:OD1	2.19	0.42
1:A:253:LEU:HD12	1:A:326:MET:CE	2.51	0.41
1:A:570:LYS:HD2	3:A:602:ACT:O	2.20	0.41
1:A:247:GLN:H	1:A:247:GLN:HG3	1.45	0.41
1:A:511:GLU:O	1:A:511:GLU:HG2	2.19	0.41
1:A:300:ARG:HD3	5:A:828:HOH:O	2.19	0.41
1:A:532:SER:HB3	1:A:534:ARG:N	2.36	0.40

There are no symmetry-related clashes.

5.3 Torsion angles [i](#)

5.3.1 Protein backbone [i](#)

In the following table, the Percentiles column shows the percent Ramachandran outliers of the chain as a percentile score with respect to all X-ray entries followed by that with respect to entries of similar resolution.

The Analysed column shows the number of residues for which the backbone conformation was analysed, and the total number of residues.

Mol	Chain	Analysed	Favoured	Allowed	Outliers	Percentiles
1	A	326/377 (86%)	314 (96%)	12 (4%)	0	100 100

There are no Ramachandran outliers to report.

5.3.2 Protein sidechains [i](#)

In the following table, the Percentiles column shows the percent sidechain outliers of the chain as a percentile score with respect to all X-ray entries followed by that with respect to entries of similar resolution.

The Analysed column shows the number of residues for which the sidechain conformation was analysed, and the total number of residues.

Mol	Chain	Analysed	Rotameric	Outliers	Percentiles
1	A	295/341 (86%)	286 (97%)	9 (3%)	40 23

All (9) residues with a non-rotameric sidechain are listed below:

Mol	Chain	Res	Type
1	A	241	LYS
1	A	244	ARG
1	A	245	ASP
1	A	247	GLN
1	A	281	GLU
1	A	345	ASN
1	A	381	ASP
1	A	461	SER
1	A	511	GLU

Sometimes sidechains can be flipped to improve hydrogen bonding and reduce clashes. All (1) such sidechains are listed below:

Mol	Chain	Res	Type
1	A	536	HIS

5.3.3 RNA [i](#)

There are no RNA molecules in this entry.

5.4 Non-standard residues in protein, DNA, RNA chains [i](#)

There are no non-standard protein/DNA/RNA residues in this entry.

5.5 Carbohydrates [i](#)

There are no monosaccharides in this entry.

5.6 Ligand geometry [i](#)

10 ligands are modelled in this entry.

In the following table, the Counts columns list the number of bonds (or angles) for which Mogul statistics could be retrieved, the number of bonds (or angles) that are observed in the model and the number of bonds (or angles) that are defined in the Chemical Component Dictionary. The Link column lists molecule types, if any, to which the group is linked. The Z score for a bond length (or angle) is the number of standard deviations the observed value is removed from the expected value. A bond length (or angle) with $|Z| > 2$ is considered an outlier worth inspection. RMSZ is the root-mean-square of all Z scores of the bond lengths (or angles).

Mol	Type	Chain	Res	Link	Bond lengths			Bond angles		
					Counts	RMSZ	# Z > 2	Counts	RMSZ	# Z > 2
3	ACT	A	610	-	3,3,3	1.48	1 (33%)	3,3,3	1.34	0
2	NAG	A	601	1	14,14,15	0.30	0	17,19,21	0.60	0
3	ACT	A	609	-	3,3,3	1.47	1 (33%)	3,3,3	1.49	0
3	ACT	A	606	-	3,3,3	1.35	1 (33%)	3,3,3	1.37	0
3	ACT	A	604	-	3,3,3	1.33	0	3,3,3	1.52	0
3	ACT	A	607	-	3,3,3	1.42	1 (33%)	3,3,3	1.55	0
3	ACT	A	608	-	3,3,3	1.32	0	3,3,3	1.35	0
4	GOL	A	603	-	5,5,5	0.94	0	5,5,5	1.10	0
3	ACT	A	602	-	3,3,3	1.41	1 (33%)	3,3,3	1.46	0
3	ACT	A	605	-	3,3,3	1.34	0	3,3,3	1.52	0

In the following table, the Chirals column lists the number of chiral outliers, the number of chiral centers analysed, the number of these observed in the model and the number defined in the Chemical Component Dictionary. Similar counts are reported in the Torsion and Rings columns. '2' means no outliers of that kind were identified.

Mol	Type	Chain	Res	Link	Chirals	Torsions	Rings
2	NAG	A	601	1	-	2/6/23/26	0/1/1/1
4	GOL	A	603	-	-	3/4/4/4	-

All (5) bond length outliers are listed below:

Mol	Chain	Res	Type	Atoms	Z	Observed(Å)	Ideal(Å)
3	A	609	ACT	CH3-C	2.24	1.58	1.49
3	A	610	ACT	CH3-C	2.19	1.58	1.49
3	A	607	ACT	CH3-C	2.17	1.58	1.49
3	A	602	ACT	CH3-C	2.10	1.57	1.49
3	A	606	ACT	CH3-C	2.05	1.57	1.49

There are no bond angle outliers.

There are no chirality outliers.

All (5) torsion outliers are listed below:

Mol	Chain	Res	Type	Atoms
4	A	603	GOL	O1-C1-C2-O2
4	A	603	GOL	O1-C1-C2-C3
2	A	601	NAG	O5-C5-C6-O6
2	A	601	NAG	C4-C5-C6-O6
4	A	603	GOL	C1-C2-C3-O3

There are no ring outliers.

1 monomer is involved in 2 short contacts:

Mol	Chain	Res	Type	Clashes	Symm-Clashes
3	A	602	ACT	2	0

5.7 Other polymers [i](#)

There are no such residues in this entry.

5.8 Polymer linkage issues [i](#)

There are no chain breaks in this entry.

6 Fit of model and data [i](#)

6.1 Protein, DNA and RNA chains [i](#)

In the following table, the column labelled ‘#RSRZ> 2’ contains the number (and percentage) of RSRZ outliers, followed by percent RSRZ outliers for the chain as percentile scores relative to all X-ray entries and entries of similar resolution. The OWAB column contains the minimum, median, 95th percentile and maximum values of the occupancy-weighted average B-factor per residue. The column labelled ‘Q< 0.9’ lists the number of (and percentage) of residues with an average occupancy less than 0.9.

Mol	Chain	Analysed	<RSRZ>	#RSRZ>2	OWAB(Å ²)	Q<0.9
1	A	332/377 (88%)	0.15	14 (4%) 36 34	24, 36, 53, 65	0

All (14) RSRZ outliers are listed below:

Mol	Chain	Res	Type	RSRZ
1	A	246	SER	5.9
1	A	302	PHE	5.6
1	A	303	ILE	5.4
1	A	401	TYR	5.2
1	A	532	SER	4.9
1	A	357	TYR	3.9
1	A	245	ASP	3.4
1	A	243	LEU	2.9
1	A	311	PHE	2.6
1	A	345	ASN	2.6
1	A	352	ASP	2.5
1	A	400	PRO	2.4
1	A	376	ASN	2.2
1	A	531	PRO	2.1

6.2 Non-standard residues in protein, DNA, RNA chains [i](#)

There are no non-standard protein/DNA/RNA residues in this entry.

6.3 Carbohydrates [i](#)

There are no monosaccharides in this entry.

6.4 Ligands [i](#)

In the following table, the Atoms column lists the number of modelled atoms in the group and the number defined in the chemical component dictionary. The B-factors column lists the minimum, median, 95th percentile and maximum values of B factors of atoms in the group. The column labelled 'Q< 0.9' lists the number of atoms with occupancy less than 0.9.

Mol	Type	Chain	Res	Atoms	RSCC	RSR	B-factors(Å ²)	Q<0.9
3	ACT	A	609	4/4	0.55	0.21	65,67,69,72	0
3	ACT	A	602	4/4	0.59	0.23	49,55,57,58	0
3	ACT	A	608	4/4	0.72	0.24	53,63,65,69	0
2	NAG	A	601	14/15	0.72	0.18	49,60,64,68	0
4	GOL	A	603	6/6	0.72	0.20	43,48,56,57	0
3	ACT	A	610	4/4	0.81	0.21	50,54,54,58	0
3	ACT	A	606	4/4	0.83	0.10	49,54,55,61	0
3	ACT	A	607	4/4	0.85	0.14	51,54,56,57	0
3	ACT	A	604	4/4	0.86	0.17	41,48,50,52	0
3	ACT	A	605	4/4	0.93	0.14	44,44,48,48	0

6.5 Other polymers [i](#)

There are no such residues in this entry.