



Full wwPDB X-ray Structure Validation Report ⓘ

May 21, 2020 – 06:33 am BST

PDB ID : 5TE1
Title : C20S, C293G Mutant N-terminal Human ATP Citrate Lyase Bound to 4R-Hydroxycitrate
Authors : Hu, J.; Fraser, M.E.
Deposited on : 2016-09-20
Resolution : 2.25 Å(reported)

This is a Full wwPDB X-ray Structure Validation Report for a publicly released PDB entry.

We welcome your comments at validation@mail.wwpdb.org

A user guide is available at

<https://www.wwpdb.org/validation/2017/XrayValidationReportHelp>

with specific help available everywhere you see the ⓘ symbol.

The following versions of software and data (see [references ⓘ](#)) were used in the production of this report:

MolProbity : 4.02b-467
Mogul : 1.8.5 (274361), CSD as541be (2020)
Xtriage (Phenix) : 1.13
EDS : 2.11
Percentile statistics : 20191225.v01 (using entries in the PDB archive December 25th 2019)
Refmac : 5.8.0158
CCP4 : 7.0.044 (Gargrove)
Ideal geometry (proteins) : Engh & Huber (2001)
Ideal geometry (DNA, RNA) : Parkinson et al. (1996)
Validation Pipeline (wwPDB-VP) : 2.11

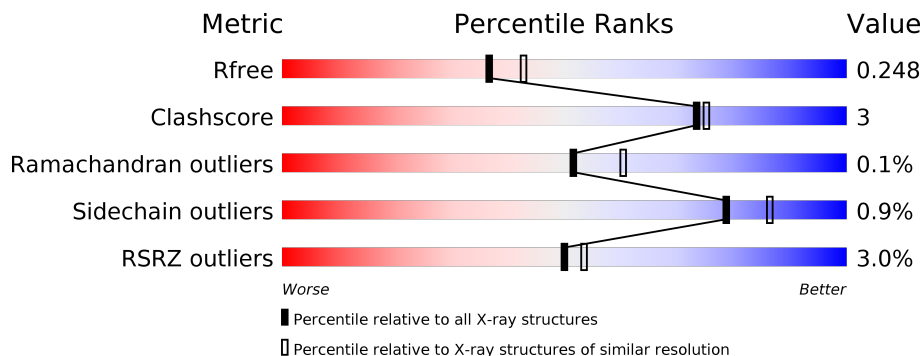
1 Overall quality at a glance

The following experimental techniques were used to determine the structure:

X-RAY DIFFRACTION

The reported resolution of this entry is 2.25 Å.

Percentile scores (ranging between 0-100) for global validation metrics of the entry are shown in the following graphic. The table shows the number of entries on which the scores are based.



Metric	Whole archive (#Entries)	Similar resolution (#Entries, resolution range(Å))
R_{free}	130704	1377 (2.26-2.26)
Clashscore	141614	1487 (2.26-2.26)
Ramachandran outliers	138981	1449 (2.26-2.26)
Sidechain outliers	138945	1450 (2.26-2.26)
RSRZ outliers	127900	1356 (2.26-2.26)

The table below summarises the geometric issues observed across the polymeric chains and their fit to the electron density. The red, orange, yellow and green segments on the lower bar indicate the fraction of residues that contain outliers for ≥ 3 , 2, 1 and 0 types of geometric quality criteria respectively. A grey segment represents the fraction of residues that are not modelled. The numeric value for each fraction is indicated below the corresponding segment, with a dot representing fractions $\leq 5\%$. The upper red bar (where present) indicates the fraction of residues that have poor fit to the electron density. The numeric value is given above the bar.

Mol	Chain	Length	Quality of chain
1	A	828	 3% 83% 6% 10%
1	B	828	 3% 82% 7% 10%

2 Entry composition i

There are 5 unique types of molecules in this entry. The entry contains 23844 atoms, of which 11566 are hydrogens and 0 are deuteriums.

In the tables below, the ZeroOcc column contains the number of atoms modelled with zero occupancy, the AltConf column contains the number of residues with at least one atom in alternate conformation and the Trace column contains the number of residues modelled with at most 2 atoms.

- Molecule 1 is a protein called ATP-citrate synthase.

Mol	Chain	Residues	Atoms						ZeroOcc	AltConf	Trace
			Total	C	H	N	O	S			
1	A	742	11515	3673	5775	974	1067	26	0	2	0
1	B	743	11529	3677	5781	976	1069	26	0	2	0

There are 26 discrepancies between the modelled and reference sequences:

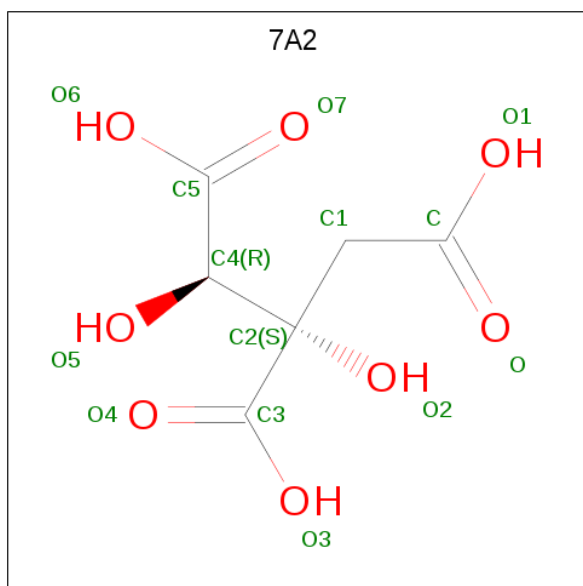
Chain	Residue	Modelled	Actual	Comment	Reference
A	20	SER	CYS	engineered mutation	UNP P53396
A	293	GLY	CYS	engineered mutation	UNP P53396
A	818	ALA	-	expression tag	UNP P53396
A	819	ALA	-	expression tag	UNP P53396
A	820	LEU	-	expression tag	UNP P53396
A	821	GLU	-	expression tag	UNP P53396
A	822	HIS	-	expression tag	UNP P53396
A	823	HIS	-	expression tag	UNP P53396
A	824	HIS	-	expression tag	UNP P53396
A	825	HIS	-	expression tag	UNP P53396
A	826	HIS	-	expression tag	UNP P53396
A	827	HIS	-	expression tag	UNP P53396
A	828	HIS	-	expression tag	UNP P53396
B	20	SER	CYS	engineered mutation	UNP P53396
B	293	GLY	CYS	engineered mutation	UNP P53396
B	818	ALA	-	expression tag	UNP P53396
B	819	ALA	-	expression tag	UNP P53396
B	820	LEU	-	expression tag	UNP P53396
B	821	GLU	-	expression tag	UNP P53396
B	822	HIS	-	expression tag	UNP P53396
B	823	HIS	-	expression tag	UNP P53396
B	824	HIS	-	expression tag	UNP P53396
B	825	HIS	-	expression tag	UNP P53396
B	826	HIS	-	expression tag	UNP P53396
B	827	HIS	-	expression tag	UNP P53396

Continued on next page...

Continued from previous page...

Chain	Residue	Modelled	Actual	Comment	Reference
B	828	HIS	-	expression tag	UNP P53396

- Molecule 2 is 3-C-carboxy-2-deoxy-L-threo-pentonic acid (three-letter code: 7A2) (formula: $C_6H_8O_8$).



Mol	Chain	Residues	Atoms				ZeroOcc	AltConf
			Total	C	H	O		
2	A	1	Total	C	H	O	0	0
			19	6	5	8		
2	B	1	Total	C	H	O	0	0
			19	6	5	8		

- Molecule 3 is PHOSPHATE ION (three-letter code: PO4) (formula: O_4P).



Mol	Chain	Residues	Atoms	ZeroOcc	AltConf
3	A	1	Total O P 5 4 1	0	0
3	B	1	Total O P 5 4 1	0	0

- Molecule 4 is SODIUM ION (three-letter code: NA) (formula: Na).

Mol	Chain	Residues	Atoms	ZeroOcc	AltConf
4	B	1	Total Na 1 1	0	0
4	A	1	Total Na 1 1	0	0

- Molecule 5 is water.

Mol	Chain	Residues	Atoms	ZeroOcc	AltConf
5	A	383	Total O 383 383	0	0
5	B	367	Total O 367 367	0	0

4 Data and refinement statistics

Property	Value	Source
Space group	P 1 21 1	Depositor
Cell constants a, b, c, α , β , γ	98.77Å 73.32Å 131.37Å 90.00° 97.06° 90.00°	Depositor
Resolution (Å)	49.01 – 2.25 49.01 – 2.25	Depositor EDS
% Data completeness (in resolution range)	92.9 (49.01-2.25) 89.2 (49.01-2.25)	Depositor EDS
R_{merge}	(Not available)	Depositor
R_{sym}	(Not available)	Depositor
$\langle I/\sigma(I) \rangle$ ¹	3.07 (at 2.24Å)	Xtrriage
Refinement program	PHENIX (1.10_2152: ???)	Depositor
R, R_{free}	0.188 , 0.247 0.189 , 0.248	Depositor DCC
R_{free} test set	4132 reflections (5.01%)	wwPDB-VP
Wilson B-factor (Å ²)	19.1	Xtrriage
Anisotropy	0.595	Xtrriage
Bulk solvent k_{sol} (e/Å ³), B_{sol} (Å ²)	0.43 , 57.1	EDS
L-test for twinning ²	$\langle L \rangle = 0.47$, $\langle L^2 \rangle = 0.30$	Xtrriage
Estimated twinning fraction	No twinning to report.	Xtrriage
F_o, F_c correlation	0.93	EDS
Total number of atoms	23844	wwPDB-VP
Average B, all atoms (Å ²)	29.0	wwPDB-VP

Xtrriage's analysis on translational NCS is as follows: *The largest off-origin peak in the Patterson function is 19.36% of the height of the origin peak. No significant pseudotranslation is detected.*

¹Intensities estimated from amplitudes.

²Theoretical values of $\langle |L| \rangle$, $\langle L^2 \rangle$ for acentric reflections are 0.5, 0.333 respectively for untwinned datasets, and 0.375, 0.2 for perfectly twinned datasets.

5 Model quality [i](#)

5.1 Standard geometry [i](#)

Bond lengths and bond angles in the following residue types are not validated in this section: NA, PO4, 7A2

The Z score for a bond length (or angle) is the number of standard deviations the observed value is removed from the expected value. A bond length (or angle) with $|Z| > 5$ is considered an outlier worth inspection. RMSZ is the root-mean-square of all Z scores of the bond lengths (or angles).

Mol	Chain	Bond lengths		Bond angles	
		RMSZ	# Z >5	RMSZ	# Z >5
1	A	0.63	0/5874	0.70	1/7954 (0.0%)
1	B	0.65	0/5882	0.71	2/7965 (0.0%)
All	All	0.64	0/11756	0.71	3/15919 (0.0%)

There are no bond length outliers.

All (3) bond angle outliers are listed below:

Mol	Chain	Res	Type	Atoms	Z	Observed(°)	Ideal(°)
1	B	662	ARG	NE-CZ-NH1	7.36	123.98	120.30
1	B	592	ARG	NE-CZ-NH2	-6.58	117.01	120.30
1	A	706	ASP	CB-CG-OD1	5.02	122.82	118.30

There are no chirality outliers.

There are no planarity outliers.

5.2 Too-close contacts [i](#)

In the following table, the Non-H and H(model) columns list the number of non-hydrogen atoms and hydrogen atoms in the chain respectively. The H(added) column lists the number of hydrogen atoms added and optimized by MolProbity. The Clashes column lists the number of clashes within the asymmetric unit, whereas Symm-Clashes lists symmetry related clashes.

Mol	Chain	Non-H	H(model)	H(added)	Clashes	Symm-Clashes
1	A	5740	5775	5769	38	0
1	B	5748	5781	5775	37	0
2	A	14	5	0	0	0
2	B	14	5	0	0	0
3	A	5	0	0	0	0
3	B	5	0	0	0	0

Continued on next page...

Continued from previous page...

Mol	Chain	Non-H	H(model)	H(added)	Clashes	Symm-Clashes
4	A	1	0	0	0	0
4	B	1	0	0	0	0
5	A	383	0	0	13	1
5	B	367	0	0	7	0
All	All	12278	11566	11544	75	1

The all-atom clashscore is defined as the number of clashes found per 1000 atoms (including hydrogen atoms). The all-atom clashscore for this structure is 3.

All (75) close contacts within the same asymmetric unit are listed below, sorted by their clash magnitude.

Atom-1	Atom-2	Interatomic distance (Å)	Clash overlap (Å)
1:A:486:GLN:OE1	5:A:1001:HOH:O	1.93	0.85
1:A:334:ASP:O	5:A:1002:HOH:O	2.03	0.77
1:A:66:ARG:NH2	1:A:216:ASP:OD1	2.18	0.75
1:A:37:ASP:N	1:A:37:ASP:OD2	2.22	0.73
1:B:30:LYS:NZ	1:B:53:GLN:OE1	2.25	0.70
1:B:240:PRO:O	5:B:1001:HOH:O	2.09	0.69
1:B:486:GLN:OE1	5:B:1002:HOH:O	2.14	0.64
1:A:788:ARG:NH2	1:A:792:GLU:OE2	2.30	0.63
1:A:193:GLU:OE2	5:A:1003:HOH:O	2.16	0.62
1:B:389:ARG:NH1	1:B:393:GLU:OE1	2.35	0.59
1:B:766:ASN:ND2	5:B:1011:HOH:O	2.34	0.59
1:A:240:PRO:O	5:A:1004:HOH:O	2.16	0.59
1:A:408:GLU:H	1:A:408:GLU:CD	2.07	0.58
1:B:661:SER:OG	1:B:667[A]:SER:OG	2.25	0.55
1:A:422:ARG:HB3	5:A:1055:HOH:O	2.06	0.55
1:B:257:ASP:OD2	5:B:1003:HOH:O	2.18	0.54
1:A:389:ARG:NH1	1:A:393:GLU:OE1	2.40	0.54
1:A:89:LEU:O	5:A:1005:HOH:O	2.18	0.54
1:B:362:ARG:NH1	1:B:397:THR:OG1	2.31	0.53
1:A:495:ARG:NH2	5:A:1032:HOH:O	2.41	0.53
1:B:635:LYS:NZ	5:B:1015:HOH:O	2.36	0.51
1:B:66:ARG:NH2	1:B:216:ASP:OD1	2.43	0.50
1:A:422:ARG:CB	5:A:1055:HOH:O	2.60	0.49
1:B:337:ILE:HD12	1:B:418:ALA:HB1	1.96	0.48
1:A:513:LEU:HD22	1:A:524:PRO:HB3	1.96	0.47
1:A:669:GLU:OE2	5:A:1008:HOH:O	2.20	0.47
1:A:423:PRO:O	5:A:1007:HOH:O	2.20	0.47
1:B:205:LEU:HD11	1:B:212:VAL:CG1	2.45	0.47
1:A:21:THR:N	5:A:1028:HOH:O	2.39	0.47

Continued on next page...

Continued from previous page...

Atom-1	Atom-2	Interatomic distance (Å)	Clash overlap (Å)
1:A:507:ARG:N	1:A:507:ARG:HD3	2.30	0.46
1:B:378:ARG:HA	1:B:405:PHE:O	2.15	0.46
1:A:507:ARG:H	1:A:507:ARG:HD3	1.80	0.46
1:B:507:ARG:HD3	1:B:507:ARG:N	2.30	0.46
1:A:200:LEU:CD1	1:A:217:LEU:HD11	2.46	0.46
1:A:40:TRP:CE3	1:A:82:LYS:HE2	2.51	0.45
1:B:200:LEU:CD1	1:B:217:LEU:HD11	2.47	0.45
1:B:89:LEU:HD13	1:B:105:PHE:CE1	2.52	0.44
1:B:162:PRO:O	1:B:166:LYS:HD3	2.17	0.44
1:A:227:TYR:HA	1:A:230:LYS:HZ3	1.83	0.44
1:A:659:TYR:CZ	1:A:684:GLY:HA3	2.52	0.44
1:B:161:ASN:O	1:B:164:ASP:N	2.50	0.44
1:B:232:LYS:HG3	5:B:1229:HOH:O	2.16	0.44
1:B:513:LEU:HD22	1:B:524:PRO:HB3	1.99	0.44
1:B:87:PRO:O	1:B:91:GLN:HG3	2.17	0.44
1:A:17:LYS:HG3	1:A:29:PHE:HZ	1.83	0.44
1:B:123:ILE:HA	1:B:131:TYR:O	2.18	0.44
1:A:337:ILE:HD12	1:A:418:ALA:HB1	2.00	0.43
1:A:697:PHE:HB2	1:A:723:GLU:HG2	2.00	0.43
1:B:200:LEU:HD11	1:B:217:LEU:HD11	1.99	0.43
1:B:37:ASP:OD2	1:B:37:ASP:N	2.51	0.43
1:B:268:LEU:HD21	1:B:326:LEU:HD13	2.00	0.43
1:B:131:TYR:CE2	1:B:151:LYS:HE2	2.54	0.43
1:A:40:TRP:O	1:A:44:LEU:HG	2.19	0.43
1:B:133:LEU:CD2	1:B:151:LYS:HG3	2.49	0.43
1:B:152:LEU:HD11	1:B:164:ASP:HB3	2.02	0.42
1:A:362:ARG:NH1	1:A:397:THR:OG1	2.33	0.42
1:A:337:ILE:CD1	1:A:418:ALA:HB1	2.50	0.42
1:B:659:TYR:CZ	1:B:684:GLY:HA3	2.55	0.42
1:A:66:ARG:HD3	5:A:1075:HOH:O	2.19	0.42
1:B:40:TRP:O	1:B:44:LEU:HG	2.20	0.41
1:B:611:LYS:O	1:B:615:GLN:HG3	2.20	0.41
1:B:257:ASP:OD2	5:B:1004:HOH:O	2.22	0.41
1:A:679:ASP:OD1	1:A:679:ASP:N	2.52	0.41
1:B:334:ASP:CG	1:B:422:ARG:HD3	2.42	0.41
1:A:157:ASP:N	5:A:1023:HOH:O	2.36	0.41
1:A:205:LEU:HD11	1:A:212:VAL:CG1	2.51	0.40
1:A:350:VAL:O	1:A:354:PHE:HB2	2.21	0.40
1:A:54:ASN:ND2	1:A:75:ASN:OD1	2.37	0.40
1:B:507:ARG:HD3	1:B:507:ARG:H	1.87	0.40
1:A:268:LEU:HD23	1:A:268:LEU:HA	1.97	0.40

Continued on next page...

Continued from previous page...

Atom-1	Atom-2	Interatomic distance (Å)	Clash overlap (Å)
1:A:656:SER:OG	1:A:679:ASP:OD2	2.23	0.40
1:B:708:PRO:O	1:B:711:LYS:HE3	2.21	0.40
1:B:203:ASN:HA	1:B:204:PRO:HA	1.89	0.40
1:B:659:TYR:HA	1:B:714:VAL:O	2.21	0.40

All (1) symmetry-related close contacts are listed below. The label for Atom-2 includes the symmetry operator and encoded unit-cell translations to be applied.

Atom-1	Atom-2	Interatomic distance (Å)	Clash overlap (Å)
5:A:1368:HOH:O	5:A:1377:HOH:O[2_645]	1.98	0.22

5.3 Torsion angles [i](#)

5.3.1 Protein backbone [i](#)

In the following table, the Percentiles column shows the percent Ramachandran outliers of the chain as a percentile score with respect to all X-ray entries followed by that with respect to entries of similar resolution.

The Analysed column shows the number of residues for which the backbone conformation was analysed, and the total number of residues.

Mol	Chain	Analysed	Favoured	Allowed	Outliers	Percentiles
1	A	738/828 (89%)	723 (98%)	14 (2%)	1 (0%)	51 60
1	B	739/828 (89%)	721 (98%)	18 (2%)	0	100 100
All	All	1477/1656 (89%)	1444 (98%)	32 (2%)	1 (0%)	51 60

All (1) Ramachandran outliers are listed below:

Mol	Chain	Res	Type
1	A	489	SER

5.3.2 Protein sidechains [i](#)

In the following table, the Percentiles column shows the percent sidechain outliers of the chain as a percentile score with respect to all X-ray entries followed by that with respect to entries of similar resolution.

The Analysed column shows the number of residues for which the sidechain conformation was

analysed, and the total number of residues.

Mol	Chain	Analysed	Rotameric	Outliers	Percentiles	
1	A	611/678 (90%)	606 (99%)	5 (1%)	81	88
1	B	612/678 (90%)	606 (99%)	6 (1%)	76	84
All	All	1223/1356 (90%)	1212 (99%)	11 (1%)	78	86

All (11) residues with a non-rotameric sidechain are listed below:

Mol	Chain	Res	Type
1	A	20	SER
1	A	37	ASP
1	A	186	SER
1	A	507	ARG
1	A	653	ARG
1	B	37	ASP
1	B	166	LYS
1	B	186	SER
1	B	485	LEU
1	B	507	ARG
1	B	653	ARG

Some sidechains can be flipped to improve hydrogen bonding and reduce clashes. There are no such sidechains identified.

5.3.3 RNA [i](#)

There are no RNA molecules in this entry.

5.4 Non-standard residues in protein, DNA, RNA chains [i](#)

There are no non-standard protein/DNA/RNA residues in this entry.

5.5 Carbohydrates [i](#)

There are no carbohydrates in this entry.

5.6 Ligand geometry [i](#)

Of 6 ligands modelled in this entry, 2 are monoatomic - leaving 4 for Mogul analysis.

In the following table, the Counts columns list the number of bonds (or angles) for which Mogul statistics could be retrieved, the number of bonds (or angles) that are observed in the model and the number of bonds (or angles) that are defined in the Chemical Component Dictionary. The Link column lists molecule types, if any, to which the group is linked. The Z score for a bond length (or angle) is the number of standard deviations the observed value is removed from the expected value. A bond length (or angle) with $|Z| > 2$ is considered an outlier worth inspection. RMSZ is the root-mean-square of all Z scores of the bond lengths (or angles).

Mol	Type	Chain	Res	Link	Bond lengths			Bond angles		
					Counts	RMSZ	# Z > 2	Counts	RMSZ	# Z > 2
3	PO4	B	902	-	4,4,4	0.65	0	6,6,6	1.32	1 (16%)
2	7A2	A	901	-	2,13,13	0.66	0	2,19,19	0.39	0
3	PO4	A	902	-	4,4,4	1.02	0	6,6,6	0.73	0
2	7A2	B	901	-	2,13,13	0.48	0	2,19,19	0.79	0

In the following table, the Chirals column lists the number of chiral outliers, the number of chiral centers analysed, the number of these observed in the model and the number defined in the Chemical Component Dictionary. Similar counts are reported in the Torsion and Rings columns. '-' means no outliers of that kind were identified.

Mol	Type	Chain	Res	Link	Chirals	Torsions	Rings
2	7A2	A	901	-	-	0/9/21/21	-
2	7A2	B	901	-	-	1/9/21/21	-

There are no bond length outliers.

All (1) bond angle outliers are listed below:

Mol	Chain	Res	Type	Atoms	Z	Observed(°)	Ideal(°)
3	B	902	PO4	O2-P-O1	-2.22	102.77	110.89

There are no chirality outliers.

All (1) torsion outliers are listed below:

Mol	Chain	Res	Type	Atoms
2	B	901	7A2	C-C1-C2-C3

There are no ring outliers.

No monomer is involved in short contacts.

5.7 Other polymers [i](#)

There are no such residues in this entry.

5.8 Polymer linkage issues

There are no chain breaks in this entry.

6 Fit of model and data

6.1 Protein, DNA and RNA chains

In the following table, the column labelled ‘#RSRZ> 2’ contains the number (and percentage) of RSRZ outliers, followed by percent RSRZ outliers for the chain as percentile scores relative to all X-ray entries and entries of similar resolution. The OWAB column contains the minimum, median, 95th percentile and maximum values of the occupancy-weighted average B-factor per residue. The column labelled ‘Q< 0.9’ lists the number of (and percentage) of residues with an average occupancy less than 0.9.

Mol	Chain	Analysed	<RSRZ>	#RSRZ>2	OWAB(Å ²)	Q<0.9
1	A	742/828 (89%)	0.26	22 (2%) 50 53	12, 24, 46, 72	0
1	B	743/828 (89%)	0.30	23 (3%) 49 52	13, 24, 47, 81	0
All	All	1485/1656 (89%)	0.28	45 (3%) 50 53	12, 24, 47, 81	0

All (45) RSRZ outliers are listed below:

Mol	Chain	Res	Type	RSRZ
1	B	68	LYS	4.7
1	B	176	ASP	4.6
1	A	768	ALA	4.1
1	B	171	VAL	4.1
1	B	812	PRO	3.9
1	B	811	VAL	3.8
1	A	766	ASN	3.8
1	A	83	SER	3.7
1	B	65	ARG	3.6
1	B	175	GLU	3.4
1	A	67	GLY	3.4
1	B	174	PRO	3.4
1	B	167	LYS	3.4
1	B	168	HIS	3.3
1	B	67	GLY	3.2
1	A	543	TRP	3.2
1	B	163	GLU	3.1
1	A	41	ALA	3.1
1	A	542	TYR	3.1
1	B	149	ALA	3.0
1	A	51	LEU	3.0
1	A	767	GLN	2.9
1	B	41	ALA	2.7
1	B	426	ASN	2.6

Continued on next page...

Continued from previous page...

Mol	Chain	Res	Type	RSRZ
1	A	545	HIS	2.5
1	B	170	LEU	2.5
1	B	504	MET	2.4
1	B	296	GLY	2.4
1	A	235	ASP	2.4
1	A	729	ARG	2.4
1	A	546	LYS	2.3
1	A	44	LEU	2.3
1	A	777	GLN	2.3
1	A	96	GLY	2.3
1	A	79	ASP	2.3
1	B	209	LYS	2.2
1	B	425	PRO	2.2
1	A	38	THR	2.2
1	B	507	ARG	2.2
1	B	768	ALA	2.1
1	A	425	PRO	2.1
1	A	70	GLY	2.1
1	B	173	ALA	2.0
1	A	397	THR	2.0
1	A	68	LYS	2.0

6.2 Non-standard residues in protein, DNA, RNA chains [i](#)

There are no non-standard protein/DNA/RNA residues in this entry.

6.3 Carbohydrates [i](#)

There are no carbohydrates in this entry.

6.4 Ligands [i](#)

In the following table, the Atoms column lists the number of modelled atoms in the group and the number defined in the chemical component dictionary. The B-factors column lists the minimum, median, 95th percentile and maximum values of B factors of atoms in the group. The column labelled 'Q< 0.9' lists the number of atoms with occupancy less than 0.9.

Mol	Type	Chain	Res	Atoms	RSCC	RSR	B-factors(\AA^2)	Q<0.9
4	NA	A	903	1/1	0.86	0.19	34,34,34,34	0
2	7A2	A	901	14/14	0.93	0.17	21,27,40,41	0

Continued on next page...

Continued from previous page...

Mol	Type	Chain	Res	Atoms	RSCC	RSR	B-factors(\AA^2)	Q<0.9
2	7A2	B	901	14/14	0.94	0.15	18,27,37,38	0
4	NA	B	903	1/1	0.96	0.22	43,43,43,43	0
3	PO4	A	902	5/5	0.97	0.16	27,29,32,34	0
3	PO4	B	902	5/5	0.98	0.16	28,28,29,33	0

6.5 Other polymers [i](#)

There are no such residues in this entry.