



# Full wwPDB X-ray Structure Validation Report ⓘ

Nov 1, 2023 – 03:23 PM JST

PDB ID : 5TGZ  
Title : Crystal Structure of the Human Cannabinoid Receptor CB1  
Authors : Hua, T.; Vemuri, K.; Pu, M.; Qu, L.; Han, G.W.; Wu, Y.; Zhao, S.; Shui, W.;  
Li, S.; Korde, A.; Laprairie, R.B.; Stahl, E.L.; Ho, J.H.; Zvonok, N.; Zhou, H.;  
Kufareva, I.; Wu, B.; Zhao, Q.; Hanson, M.A.; Bohn, L.M.; Makriyannis, A.;  
Stevens, R.C.; Liu, Z.J.  
Deposited on : 2016-09-28  
Resolution : 2.80 Å(reported)

This is a Full wwPDB X-ray Structure Validation Report for a publicly released PDB entry.

We welcome your comments at [validation@mail.wwpdb.org](mailto:validation@mail.wwpdb.org)

A user guide is available at

<https://www.wwpdb.org/validation/2017/XrayValidationReportHelp>

with specific help available everywhere you see the ⓘ symbol.

The types of validation reports are described at

<http://www.wwpdb.org/validation/2017/FAQs#types>.

---

The following versions of software and data (see [references](#) ①) were used in the production of this report:

MolProbity : 4.02b-467  
Mogul : 1.8.5 (274361), CSD as541be (2020)  
Xtrriage (Phenix) : 1.13  
EDS : 2.36  
buster-report : 1.1.7 (2018)  
Percentile statistics : 20191225.v01 (using entries in the PDB archive December 25th 2019)  
Refmac : 5.8.0158  
CCP4 : 7.0.044 (Gargrove)  
Ideal geometry (proteins) : Engh & Huber (2001)  
Ideal geometry (DNA, RNA) : Parkinson et al. (1996)  
Validation Pipeline (wwPDB-VP) : 2.36

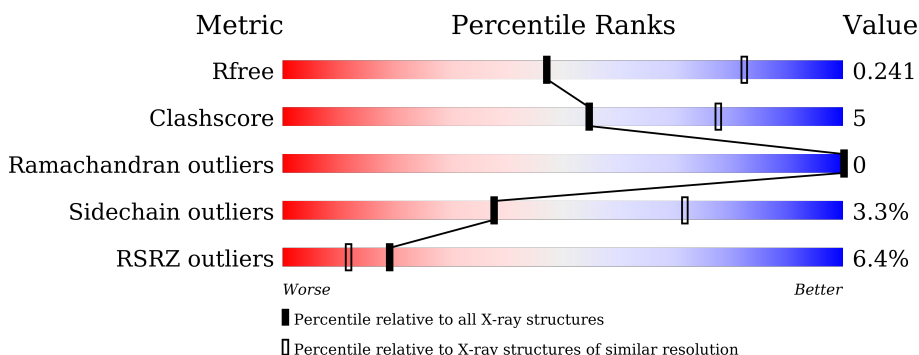
# 1 Overall quality at a glance

The following experimental techniques were used to determine the structure:

*X-RAY DIFFRACTION*

The reported resolution of this entry is 2.80 Å.

Percentile scores (ranging between 0-100) for global validation metrics of the entry are shown in the following graphic. The table shows the number of entries on which the scores are based.



Metric	Whole archive (#Entries)	Similar resolution (#Entries, resolution range(Å))
$R_{free}$	130704	3140 (2.80-2.80)
Clashscore	141614	3569 (2.80-2.80)
Ramachandran outliers	138981	3498 (2.80-2.80)
Sidechain outliers	138945	3500 (2.80-2.80)
RSRZ outliers	127900	3078 (2.80-2.80)

The table below summarises the geometric issues observed across the polymeric chains and their fit to the electron density. The red, orange, yellow and green segments of the lower bar indicate the fraction of residues that contain outliers for  $\geq 3$ , 2, 1 and 0 types of geometric quality criteria respectively. A grey segment represents the fraction of residues that are not modelled. The numeric value for each fraction is indicated below the corresponding segment, with a dot representing fractions  $\leq 5\%$ . The upper red bar (where present) indicates the fraction of residues that have poor fit to the electron density. The numeric value is given above the bar.

Mol	Chain	Length	Quality of chain
1	A	452	

## 2 Entry composition [i](#)

There are 7 unique types of molecules in this entry. The entry contains 3550 atoms, of which 0 are hydrogens and 0 are deuteriums.

In the tables below, the ZeroOcc column contains the number of atoms modelled with zero occupancy, the AltConf column contains the number of residues with at least one atom in alternate conformation and the Trace column contains the number of residues modelled with at most 2 atoms.

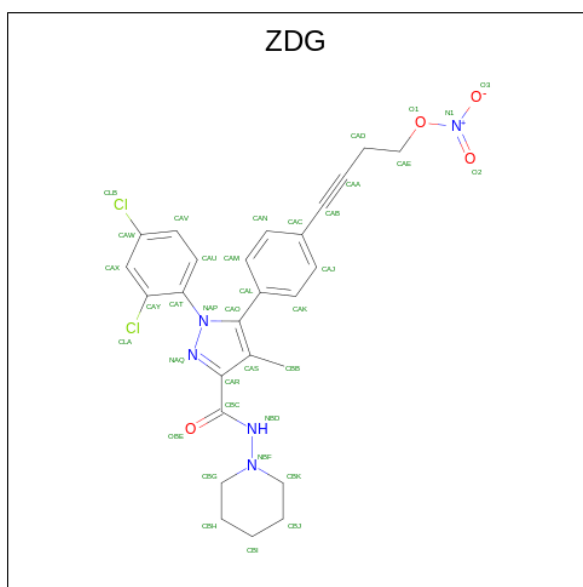
- Molecule 1 is a protein called Cannabinoid receptor 1,Flavodoxin,Cannabinoid receptor 1.

Mol	Chain	Residues	Atoms					ZeroOcc	AltConf	Trace
			Total	C	N	O	S			
1	A	439	3415	2223	561	608	23	0	1	0

There are 20 discrepancies between the modelled and reference sequences:

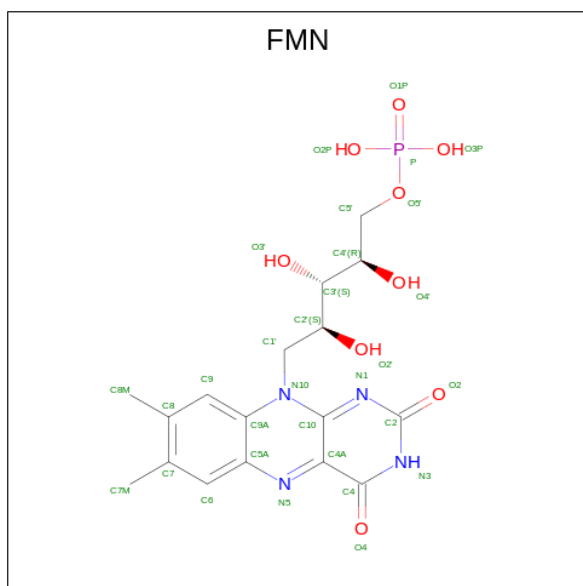
Chain	Residue	Modelled	Actual	Comment	Reference
A	-3	GLY	-	expression tag	UNP P21554
A	-2	GLY	-	expression tag	UNP P21554
A	-1	GLY	-	expression tag	UNP P21554
A	0	ARG	-	expression tag	UNP P21554
A	210	ALA	THR	engineered mutation	UNP P21554
A	273	LYS	GLU	engineered mutation	UNP P21554
A	283	VAL	THR	engineered mutation	UNP P21554
A	1002	ALA	PRO	engineered mutation	UNP P00323
A	1098	TRP	TYR	engineered mutation	UNP P00323
A	340	GLU	ARG	engineered mutation	UNP P21554
A	415	HIS	-	expression tag	UNP P21554
A	416	HIS	-	expression tag	UNP P21554
A	417	HIS	-	expression tag	UNP P21554
A	418	HIS	-	expression tag	UNP P21554
A	419	HIS	-	expression tag	UNP P21554
A	420	HIS	-	expression tag	UNP P21554
A	421	HIS	-	expression tag	UNP P21554
A	422	HIS	-	expression tag	UNP P21554
A	423	HIS	-	expression tag	UNP P21554
A	424	HIS	-	expression tag	UNP P21554

- Molecule 2 is 4-[4-[2-(2,4-dichlorophenyl)-4-methyl-5-(piperidin-1-ylcarbonyl)pyrazol-3-yl]phenyl]but-3-ynyl nitrate (three-letter code: ZDG) (formula: C<sub>26</sub>H<sub>25</sub>Cl<sub>2</sub>N<sub>5</sub>O<sub>4</sub>).



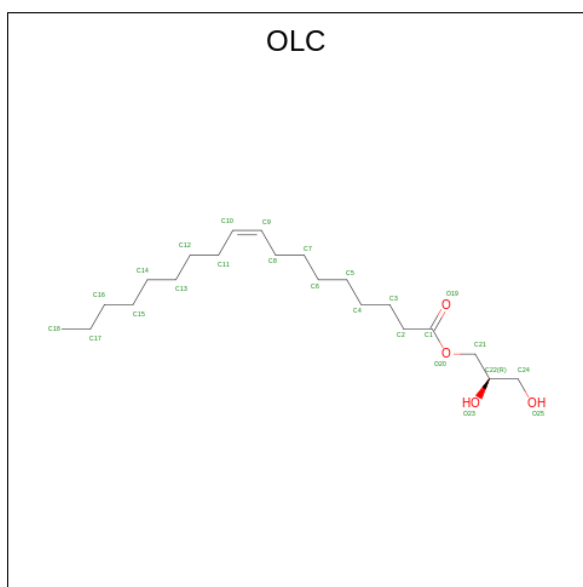
Mol	Chain	Residues	Atoms				ZeroOcc	AltConf	
			Total	C	Cl	N			O
2	A	1	33	26	2	4	1	0	0

- Molecule 3 is FLAVIN MONONUCLEOTIDE (three-letter code: FMN) (formula: C<sub>17</sub>H<sub>21</sub>N<sub>4</sub>O<sub>9</sub>P).



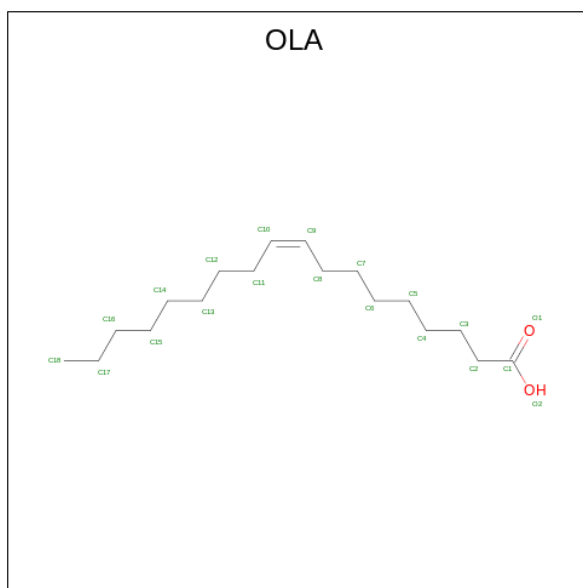
Mol	Chain	Residues	Atoms				ZeroOcc	AltConf	
			Total	C	N	O			P
3	A	1	31	17	4	9	1	0	0

- Molecule 4 is (2R)-2,3-dihydroxypropyl (9Z)-octadec-9-enoate (three-letter code: OLC) (formula: C<sub>21</sub>H<sub>40</sub>O<sub>4</sub>).



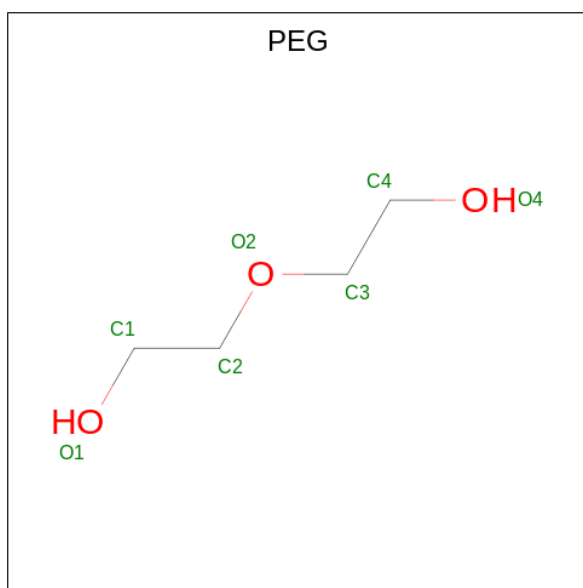
Mol	Chain	Residues	Atoms		ZeroOcc	AltConf
4	A	1	Total	C O	0	0
			19	15 4		

- Molecule 5 is OLEIC ACID (three-letter code: OLA) (formula:  $C_{18}H_{34}O_2$ ).



Mol	Chain	Residues	Atoms		ZeroOcc	AltConf
5	A	1	Total	C O	0	0
			14	12 2		
5	A	1	Total	C	0	0
			9	9		
5	A	1	Total	C	0	0
			13	13		

- Molecule 6 is DI(HYDROXYETHYL)ETHER (three-letter code: PEG) (formula: C<sub>4</sub>H<sub>10</sub>O<sub>3</sub>).



Mol	Chain	Residues	Atoms	ZeroOcc	AltConf
6	A	1	Total C O 7 4 3	0	0

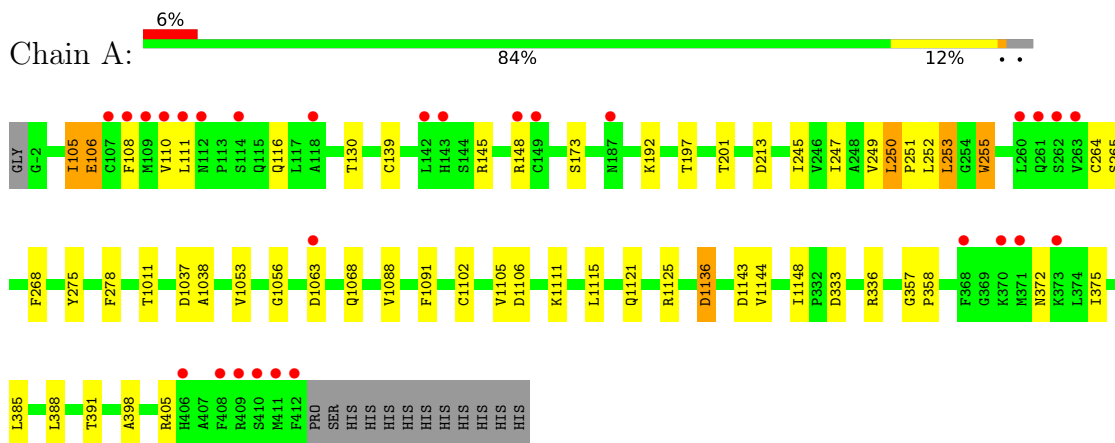
- Molecule 7 is water.

Mol	Chain	Residues	Atoms	ZeroOcc	AltConf
7	A	9	Total O 9 9	0	0

### 3 Residue-property plots [i](#)

These plots are drawn for all protein, RNA, DNA and oligosaccharide chains in the entry. The first graphic for a chain summarises the proportions of the various outlier classes displayed in the second graphic. The second graphic shows the sequence view annotated by issues in geometry and electron density. Residues are color-coded according to the number of geometric quality criteria for which they contain at least one outlier: green = 0, yellow = 1, orange = 2 and red = 3 or more. A red dot above a residue indicates a poor fit to the electron density ( $RSRZ > 2$ ). Stretches of 2 or more consecutive residues without any outlier are shown as a green connector. Residues present in the sample, but not in the model, are shown in grey.

- Molecule 1: Cannabinoid receptor 1,Flavodoxin,Cannabinoid receptor 1





## 4 Data and refinement statistics

Property	Value	Source
Space group	C 1 2 1	Depositor
Cell constants a, b, c, $\alpha$ , $\beta$ , $\gamma$	116.56Å 52.63Å 143.63Å 90.00° 111.14° 90.00°	Depositor
Resolution (Å)	47.05 – 2.80 47.05 – 2.60	Depositor EDS
% Data completeness (in resolution range)	97.3 (47.05-2.80) 92.7 (47.05-2.60)	Depositor EDS
$R_{merge}$	0.13	Depositor
$R_{sym}$	(Not available)	Depositor
$\langle I/\sigma(I) \rangle$ <sup>1</sup>	1.42 (at 2.61Å)	Xtrriage
Refinement program	PHENIX dev_2289	Depositor
R, $R_{free}$	0.206 , 0.238 0.207 , 0.241	Depositor DCC
$R_{free}$ test set	1226 reflections (5.01%)	wwPDB-VP
Wilson B-factor (Å <sup>2</sup> )	57.5	Xtrriage
Anisotropy	0.064	Xtrriage
Bulk solvent $k_{sol}$ (e/Å <sup>3</sup> ), $B_{sol}$ (Å <sup>2</sup> )	0.31 , 63.0	EDS
L-test for twinning <sup>2</sup>	$\langle  L  \rangle = 0.46$ , $\langle L^2 \rangle = 0.29$	Xtrriage
Estimated twinning fraction	0.026 for h,-k,-h-l	Xtrriage
$F_o, F_c$ correlation	0.90	EDS
Total number of atoms	3550	wwPDB-VP
Average B, all atoms (Å <sup>2</sup> )	87.0	wwPDB-VP

Xtrriage's analysis on translational NCS is as follows: *The largest off-origin peak in the Patterson function is 6.38% of the height of the origin peak. No significant pseudotranslation is detected.*

<sup>1</sup>Intensities estimated from amplitudes.

<sup>2</sup>Theoretical values of  $\langle |L| \rangle$ ,  $\langle L^2 \rangle$  for acentric reflections are 0.5, 0.333 respectively for untwinned datasets, and 0.375, 0.2 for perfectly twinned datasets.

## 5 Model quality [i](#)

### 5.1 Standard geometry [i](#)

Bond lengths and bond angles in the following residue types are not validated in this section: OLC, PEG, OLA, ZDG, FMN

The Z score for a bond length (or angle) is the number of standard deviations the observed value is removed from the expected value. A bond length (or angle) with  $|Z| > 5$  is considered an outlier worth inspection. RMSZ is the root-mean-square of all Z scores of the bond lengths (or angles).

Mol	Chain	Bond lengths		Bond angles	
		RMSZ	# Z  >5	RMSZ	# Z  >5
1	A	0.27	0/3492	0.43	0/4744

There are no bond length outliers.

There are no bond angle outliers.

There are no chirality outliers.

There are no planarity outliers.

### 5.2 Too-close contacts [i](#)

In the following table, the Non-H and H(model) columns list the number of non-hydrogen atoms and hydrogen atoms in the chain respectively. The H(added) column lists the number of hydrogen atoms added and optimized by MolProbity. The Clashes column lists the number of clashes within the asymmetric unit, whereas Symm-Clashes lists symmetry-related clashes.

Mol	Chain	Non-H	H(model)	H(added)	Clashes	Symm-Clashes
1	A	3415	0	3431	36	0
2	A	33	0	0	0	0
3	A	31	0	19	0	0
4	A	19	0	25	1	0
5	A	36	0	58	1	0
6	A	7	0	10	0	0
7	A	9	0	0	0	0
All	All	3550	0	3543	37	0

The all-atom clashscore is defined as the number of clashes found per 1000 atoms (including hydrogen atoms). The all-atom clashscore for this structure is 5.

All (37) close contacts within the same asymmetric unit are listed below, sorted by their clash magnitude.

Atom-1	Atom-2	Interatomic distance (Å)	Clash overlap (Å)
1:A:213:ASP:HB2	5:A:2004:OLA:H112	1.78	0.66
1:A:250:LEU:HB2	1:A:251:PRO:HD2	1.88	0.55
1:A:1148:ILE:O	1:A:336:ARG:NH1	2.41	0.54
1:A:130:THR:OG1	1:A:391:THR:HG22	2.09	0.52
1:A:251:PRO:HG3	1:A:275:TYR:CE2	2.46	0.51
1:A:197:THR:O	1:A:201:THR:OG1	2.27	0.50
1:A:1011:THR:HG22	1:A:1068:GLN:HE21	1.78	0.49
1:A:145:ARG:HA	1:A:148:ARG:HG2	1.95	0.49
1:A:251:PRO:CG	1:A:275:TYR:CZ	2.97	0.48
1:A:1106:ASP:OD1	1:A:1125:ARG:NH1	2.43	0.48
1:A:247:ILE:O	1:A:251:PRO:HD2	2.14	0.48
1:A:385:LEU:HD23	1:A:388:LEU:HD21	1.96	0.48
1:A:1121:GLN:HE22	1:A:1143:ASP:HB2	1.78	0.48
1:A:105:ILE:HG22	1:A:106:GLU:H	1.78	0.47
1:A:1136:ASP:N	1:A:1136:ASP:OD1	2.48	0.46
1:A:250:LEU:CB	1:A:251:PRO:CD	2.94	0.45
1:A:251:PRO:HG3	1:A:275:TYR:CD2	2.52	0.45
1:A:333:ASP:OD1	1:A:336:ARG:NH2	2.49	0.44
1:A:1056:GLY:HA2	1:A:1091:PHE:O	2.17	0.44
1:A:249:VAL:O	1:A:253:LEU:N	2.45	0.44
1:A:1102:CYS:O	1:A:1105:VAL:HG22	2.18	0.44
1:A:372:ASN:HB3	1:A:375:ILE:HG13	2.00	0.44
1:A:1053:VAL:HB	1:A:1088:VAL:HG12	1.99	0.44
4:A:2003:OLC:H3A	4:A:2003:OLC:H6A	1.69	0.44
1:A:265:SER:OG	1:A:268:PHE:O	2.36	0.43
1:A:1037:ASP:OD1	1:A:1038:ALA:N	2.51	0.43
1:A:398:ALA:O	1:A:405:ARG:HD2	2.18	0.43
1:A:250:LEU:HB2	1:A:251:PRO:CD	2.49	0.43
1:A:110:VAL:HG12	1:A:111:LEU:HG	2.01	0.42
1:A:106:GLU:HB3	1:A:108:PHE:CE1	2.55	0.42
1:A:173:SER:HB3	1:A:192:LYS:HD3	2.02	0.41
1:A:357:GLY:N	1:A:358:PRO:HD2	2.35	0.41
1:A:388:LEU:HA	1:A:391:THR:HG23	2.01	0.41
1:A:252:LEU:HD23	1:A:252:LEU:C	2.41	0.41
1:A:250:LEU:HD12	1:A:255:TRP:HZ3	1.85	0.41
1:A:1111:LYS:O	1:A:1115:LEU:HG	2.21	0.41
1:A:247:ILE:HG23	1:A:278:PHE:HE2	1.85	0.40

There are no symmetry-related clashes.

## 5.3 Torsion angles [i](#)

### 5.3.1 Protein backbone [i](#)

In the following table, the Percentiles column shows the percent Ramachandran outliers of the chain as a percentile score with respect to all X-ray entries followed by that with respect to entries of similar resolution.

The Analysed column shows the number of residues for which the backbone conformation was analysed, and the total number of residues.

Mol	Chain	Analysed	Favoured	Allowed	Outliers	Percentiles
1	A	438/452 (97%)	428 (98%)	10 (2%)	0	100 100

There are no Ramachandran outliers to report.

### 5.3.2 Protein sidechains [i](#)

In the following table, the Percentiles column shows the percent sidechain outliers of the chain as a percentile score with respect to all X-ray entries followed by that with respect to entries of similar resolution.

The Analysed column shows the number of residues for which the sidechain conformation was analysed, and the total number of residues.

Mol	Chain	Analysed	Rotameric	Outliers	Percentiles
1	A	364/380 (96%)	352 (97%)	12 (3%)	38 72

All (12) residues with a non-rotameric sidechain are listed below:

Mol	Chain	Res	Type
1	A	105	ILE
1	A	106	GLU
1	A	116	GLN
1	A	139	CYS
1	A	245	ILE
1	A	250	LEU
1	A	253	LEU
1	A	255	TRP
1	A	264	CYS
1	A	1063	ASP
1	A	1136	ASP
1	A	1144	VAL

Sometimes sidechains can be flipped to improve hydrogen bonding and reduce clashes. There are no such sidechains identified.

### 5.3.3 RNA [i](#)

There are no RNA molecules in this entry.

## 5.4 Non-standard residues in protein, DNA, RNA chains [i](#)

There are no non-standard protein/DNA/RNA residues in this entry.

## 5.5 Carbohydrates [i](#)

There are no monosaccharides in this entry.

## 5.6 Ligand geometry [i](#)

7 ligands are modelled in this entry.

In the following table, the Counts columns list the number of bonds (or angles) for which Mogul statistics could be retrieved, the number of bonds (or angles) that are observed in the model and the number of bonds (or angles) that are defined in the Chemical Component Dictionary. The Link column lists molecule types, if any, to which the group is linked. The Z score for a bond length (or angle) is the number of standard deviations the observed value is removed from the expected value. A bond length (or angle) with  $|Z| > 2$  is considered an outlier worth inspection. RMSZ is the root-mean-square of all Z scores of the bond lengths (or angles).

Mol	Type	Chain	Res	Link	Bond lengths			Bond angles		
					Counts	RMSZ	# Z  > 2	Counts	RMSZ	# Z  > 2
4	OLC	A	2003	-	18,18,24	0.27	0	18,19,25	0.15	0
5	OLA	A	2004	-	13,13,19	0.64	0	12,13,19	1.22	1 (8%)
6	PEG	A	2007	-	6,6,6	0.41	0	5,5,5	0.32	0
5	OLA	A	2005	-	8,8,19	0.28	0	7,7,19	0.49	0
2	ZDG	A	2001	-	34,36,40	3.95	11 (32%)	39,50,55	1.99	7 (17%)
5	OLA	A	2006	-	12,12,19	0.25	0	11,11,19	0.82	0
3	FMN	A	2002	-	33,33,33	1.09	2 (6%)	48,50,50	1.33	8 (16%)

In the following table, the Chirals column lists the number of chiral outliers, the number of chiral centers analysed, the number of these observed in the model and the number defined in the Chemical Component Dictionary. Similar counts are reported in the Torsion and Rings columns. '2' means no outliers of that kind were identified.

Mol	Type	Chain	Res	Link	Chirals	Torsions	Rings
4	OLC	A	2003	-	-	12/18/18/24	-
5	OLA	A	2004	-	-	3/11/11/17	-
6	PEG	A	2007	-	-	2/4/4/4	-
5	OLA	A	2005	-	-	0/6/6/17	-
2	ZDG	A	2001	-	-	6/15/28/32	0/4/4/4
5	OLA	A	2006	-	-	5/10/10/17	-
3	FMN	A	2002	-	-	6/18/18/18	0/3/3/3

All (13) bond length outliers are listed below:

Mol	Chain	Res	Type	Atoms	Z	Observed(Å)	Ideal(Å)
2	A	2001	ZDG	CBK-NBF	-11.77	1.32	1.46
2	A	2001	ZDG	CBG-NBF	-11.61	1.33	1.46
2	A	2001	ZDG	NBD-NBF	-11.42	1.28	1.41
2	A	2001	ZDG	CBC-NBD	7.56	1.46	1.35
2	A	2001	ZDG	CAO-CAS	-4.44	1.37	1.40
3	A	2002	FMN	C4A-N5	4.09	1.38	1.30
2	A	2001	ZDG	CAC-CAB	3.78	1.53	1.44
2	A	2001	ZDG	CAR-NAQ	-2.96	1.33	1.35
3	A	2002	FMN	C10-N1	2.76	1.38	1.33
2	A	2001	ZDG	CAY-CLA	2.30	1.79	1.73
2	A	2001	ZDG	CAL-CAO	2.21	1.53	1.48
2	A	2001	ZDG	OBE-CBC	-2.17	1.18	1.23
2	A	2001	ZDG	CAW-CLB	2.05	1.79	1.74

All (16) bond angle outliers are listed below:

Mol	Chain	Res	Type	Atoms	Z	Observed(°)	Ideal(°)
2	A	2001	ZDG	CAR-CAS-CAO	5.66	108.05	103.07
2	A	2001	ZDG	CBJ-CBK-NBF	4.74	116.22	110.18
2	A	2001	ZDG	CAR-CBC-NBD	4.52	118.83	113.56
2	A	2001	ZDG	CBB-CAS-CAO	-4.03	125.43	128.20
2	A	2001	ZDG	CBH-CBG-NBF	3.31	114.39	110.18
2	A	2001	ZDG	CBK-NBF-NBD	-3.09	107.50	110.11
3	A	2002	FMN	C4-N3-C2	-3.08	119.95	125.64
3	A	2002	FMN	C4A-C4-N3	2.77	120.23	113.19
3	A	2002	FMN	C4A-C10-N10	2.47	120.09	116.48
3	A	2002	FMN	O2'-C2'-C3'	2.45	115.07	109.10
2	A	2001	ZDG	CBG-NBF-NBD	-2.45	108.04	110.11
3	A	2002	FMN	O4-C4-C4A	-2.32	120.44	126.60
3	A	2002	FMN	C10-C4A-N5	-2.31	119.96	124.86
3	A	2002	FMN	C4A-C10-N1	-2.29	119.42	124.73

*Continued on next page...*

*Continued from previous page...*

Mol	Chain	Res	Type	Atoms	Z	Observed(°)	Ideal(°)
5	A	2004	OLA	O2-C1-C2	2.10	120.78	114.03
3	A	2002	FMN	C9A-C5A-N5	-2.02	120.24	122.43

There are no chirality outliers.

All (34) torsion outliers are listed below:

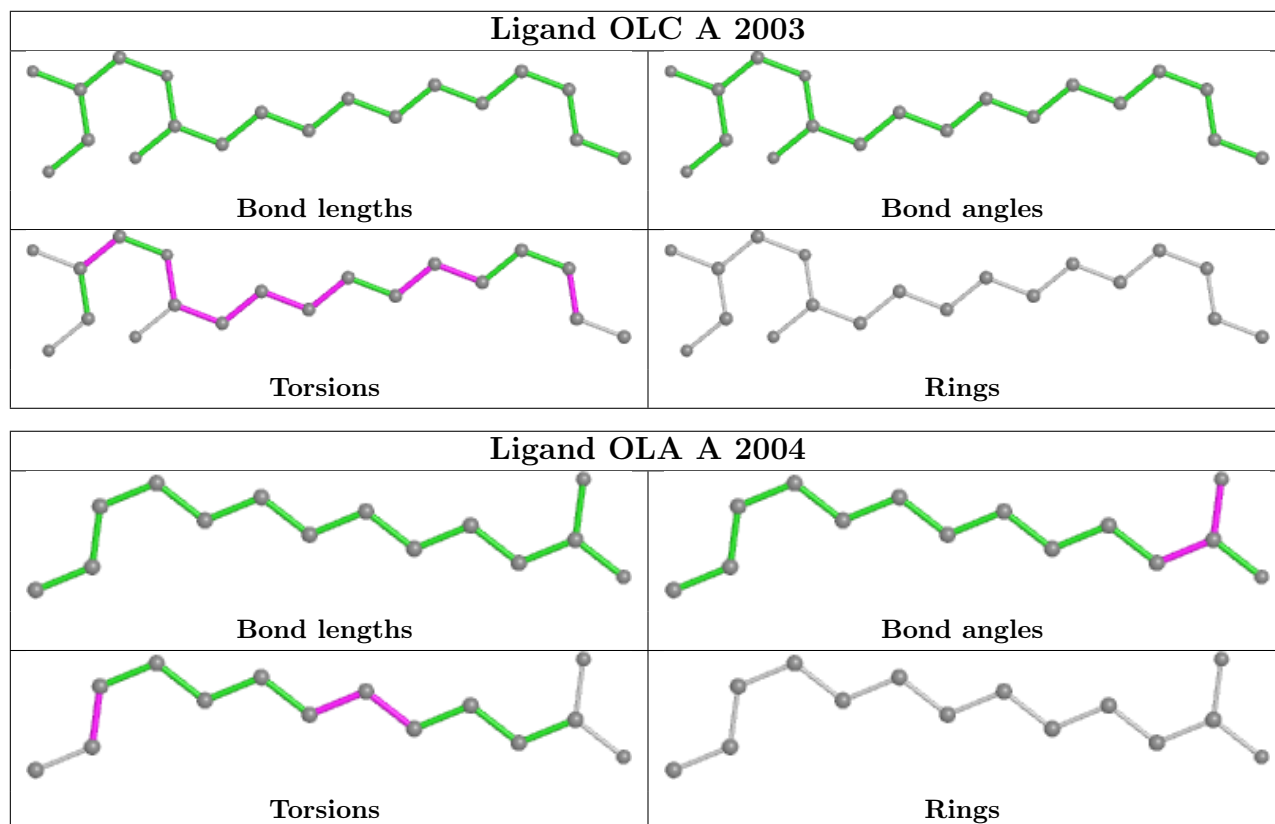
Mol	Chain	Res	Type	Atoms
2	A	2001	ZDG	CAU-CAT-NAP-NAQ
3	A	2002	FMN	C5'-O5'-P-O2P
4	A	2003	OLC	O20-C21-C22-C24
4	A	2003	OLC	O20-C21-C22-O23
4	A	2003	OLC	C3-C4-C5-C6
4	A	2003	OLC	C6-C7-C8-C9
4	A	2003	OLC	C1-C2-C3-C4
4	A	2003	OLC	C5-C6-C7-C8
4	A	2003	OLC	C2-C3-C4-C5
5	A	2004	OLA	C4-C5-C6-C7
5	A	2004	OLA	C3-C4-C5-C6
6	A	2007	PEG	O1-C1-C2-O2
5	A	2006	OLA	C14-C15-C16-C17
2	A	2001	ZDG	CAK-CAL-CAO-NAP
3	A	2002	FMN	O4'-C4'-C5'-O5'
2	A	2001	ZDG	CAM-CAL-CAO-NAP
6	A	2007	PEG	O2-C3-C4-O4
4	A	2003	OLC	C9-C10-C11-C12
5	A	2004	OLA	C9-C10-C11-C12
3	A	2002	FMN	C5'-O5'-P-O3P
2	A	2001	ZDG	CAK-CAL-CAO-CAS
5	A	2006	OLA	C10-C11-C12-C13
3	A	2002	FMN	C5'-O5'-P-O1P
2	A	2001	ZDG	CAM-CAL-CAO-CAS
5	A	2006	OLA	C11-C12-C13-C14
2	A	2001	ZDG	CAD-CAA-CAB-CAC
3	A	2002	FMN	C3'-C4'-C5'-O5'
4	A	2003	OLC	O20-C1-C2-C3
5	A	2006	OLA	C7-C8-C9-C10
3	A	2002	FMN	C2'-C3'-C4'-C5'
4	A	2003	OLC	O19-C1-O20-C21
4	A	2003	OLC	C2-C1-O20-C21
4	A	2003	OLC	O19-C1-C2-C3
5	A	2006	OLA	C13-C14-C15-C16

There are no ring outliers.

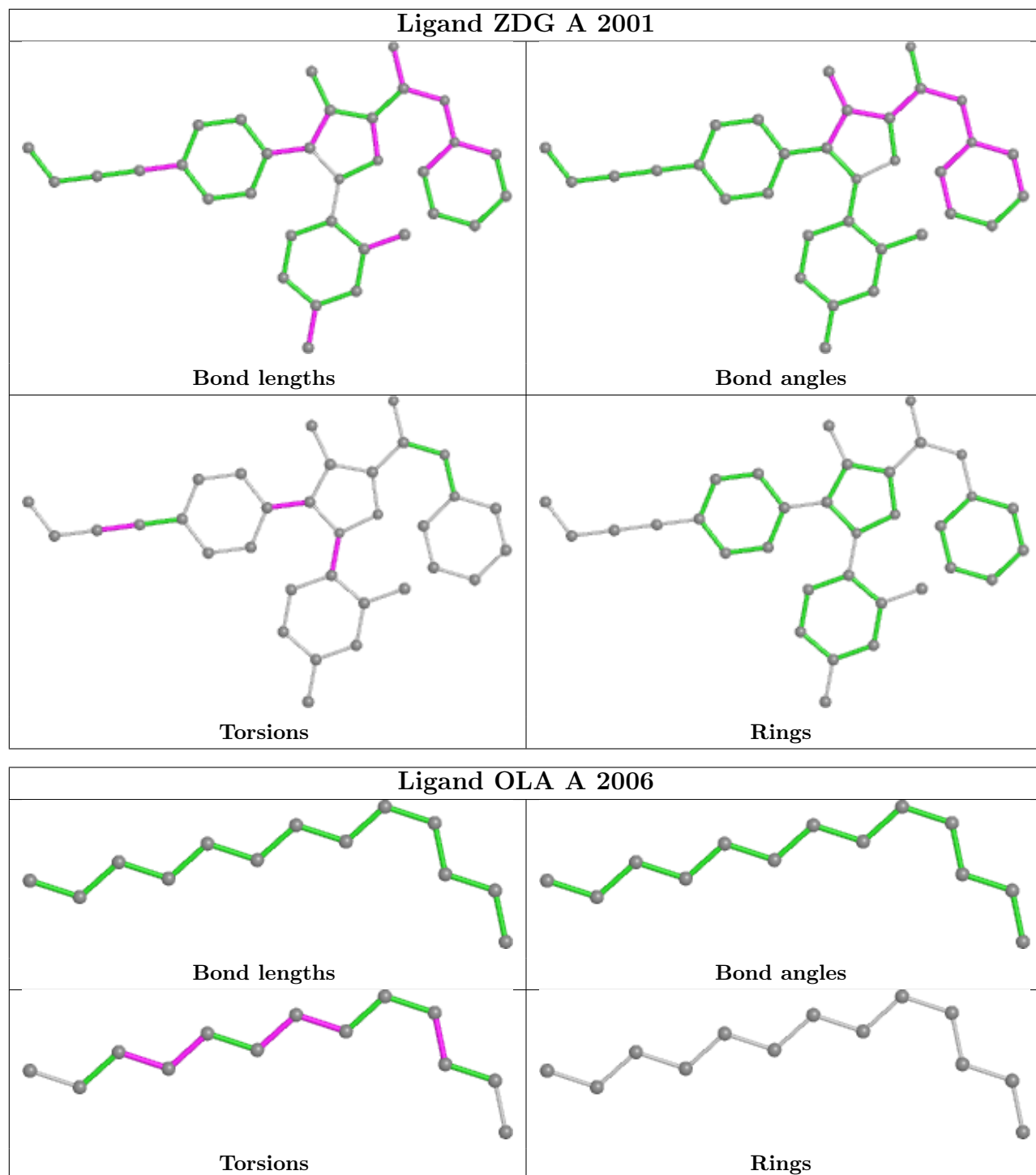
2 monomers are involved in 2 short contacts:

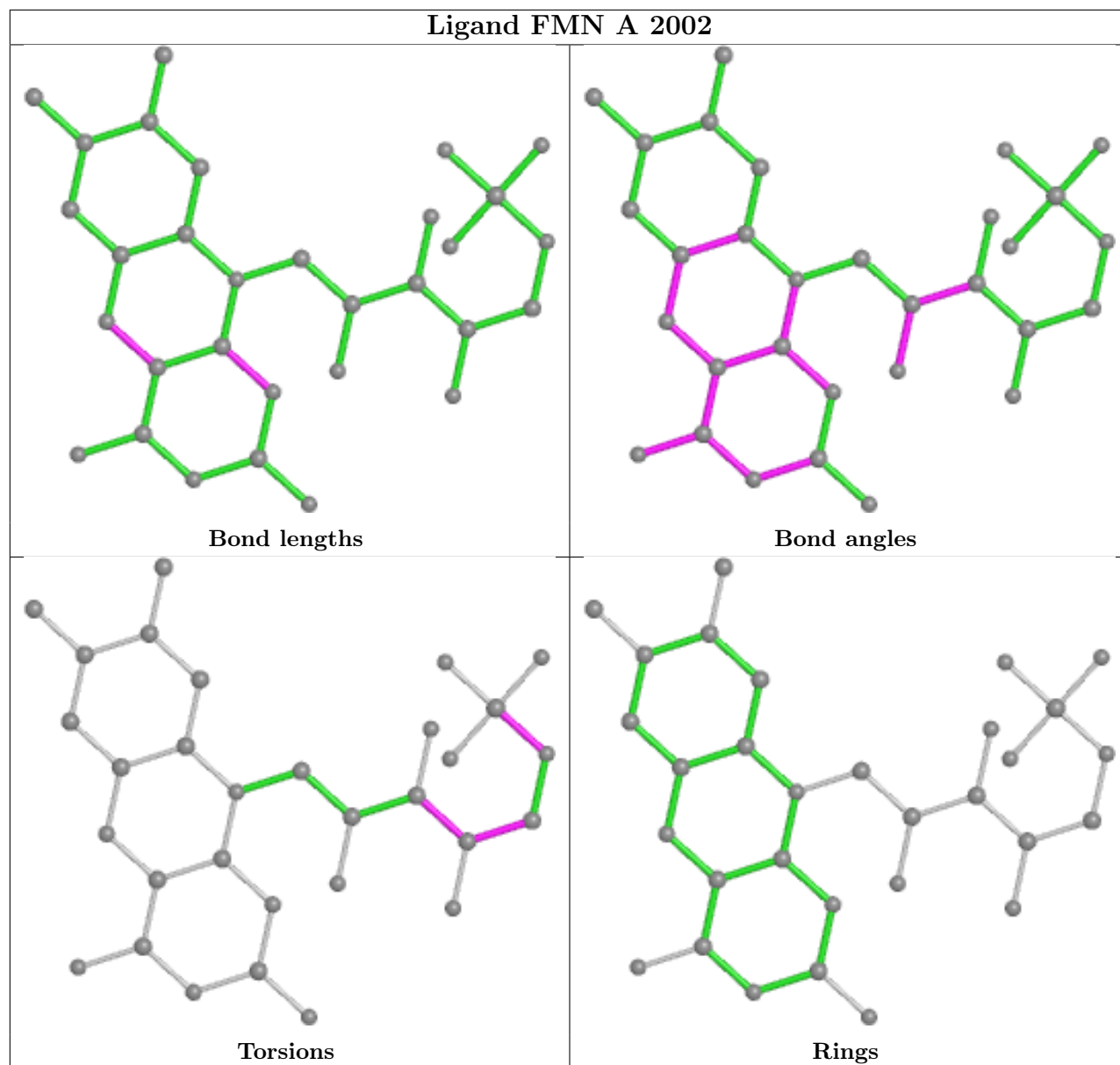
Mol	Chain	Res	Type	Clashes	Symm-Clashes
4	A	2003	OLC	1	0
5	A	2004	OLA	1	0

The following is a two-dimensional graphical depiction of Mogul quality analysis of bond lengths, bond angles, torsion angles, and ring geometry for all instances of the Ligand of Interest. In addition, ligands with molecular weight > 250 and outliers as shown on the validation Tables will also be included. For torsion angles, if less than 5% of the Mogul distribution of torsion angles is within 10 degrees of the torsion angle in question, then that torsion angle is considered an outlier. Any bond that is central to one or more torsion angles identified as an outlier by Mogul will be highlighted in the graph. For rings, the root-mean-square deviation (RMSD) between the ring in question and similar rings identified by Mogul is calculated over all ring torsion angles. If the average RMSD is greater than 60 degrees and the minimal RMSD between the ring in question and any Mogul-identified rings is also greater than 60 degrees, then that ring is considered an outlier. The outliers are highlighted in purple. The color gray indicates Mogul did not find sufficient equivalents in the CSD to analyse the geometry.









## 5.7 Other polymers [i](#)

There are no such residues in this entry.

## 5.8 Polymer linkage issues [i](#)

There are no chain breaks in this entry.

## 6 Fit of model and data

### 6.1 Protein, DNA and RNA chains

In the following table, the column labelled ‘#RSRZ> 2’ contains the number (and percentage) of RSRZ outliers, followed by percent RSRZ outliers for the chain as percentile scores relative to all X-ray entries and entries of similar resolution. The OWAB column contains the minimum, median, 95<sup>th</sup> percentile and maximum values of the occupancy-weighted average B-factor per residue. The column labelled ‘Q< 0.9’ lists the number of (and percentage) of residues with an average occupancy less than 0.9.

Mol	Chain	Analysed	<RSRZ>	#RSRZ>2	OWAB(Å <sup>2</sup> )	Q<0.9
1	A	439/452 (97%)	0.02	28 (6%) <b>19</b> <b>12</b>	43, 82, 137, 194	0

All (28) RSRZ outliers are listed below:

Mol	Chain	Res	Type	RSRZ
1	A	412	PHE	8.4
1	A	110	VAL	5.5
1	A	109	MET	5.3
1	A	143	HIS	5.1
1	A	411	MET	4.4
1	A	408	PHE	3.8
1	A	149	CYS	3.8
1	A	373	LYS	3.8
1	A	410	SER	3.7
1	A	107	CYS	3.4
1	A	409	ARG	3.3
1	A	260	LEU	3.0
1	A	112	ASN	3.0
1	A	262	SER	2.8
1	A	142	LEU	2.6
1	A	406	HIS	2.5
1	A	108	PHE	2.4
1	A	187	ASN	2.4
1	A	148	ARG	2.3
1	A	261	GLN	2.3
1	A	263	VAL	2.3
1	A	111	LEU	2.3
1	A	370	LYS	2.2
1	A	1063	ASP	2.1
1	A	368	PHE	2.1
1	A	371	MET	2.0
1	A	118	ALA	2.0

*Continued on next page...*

*Continued from previous page...*

Mol	Chain	Res	Type	RSRZ
1	A	114	SER	2.0

## 6.2 Non-standard residues in protein, DNA, RNA chains [\(i\)](#)

There are no non-standard protein/DNA/RNA residues in this entry.

## 6.3 Carbohydrates [\(i\)](#)

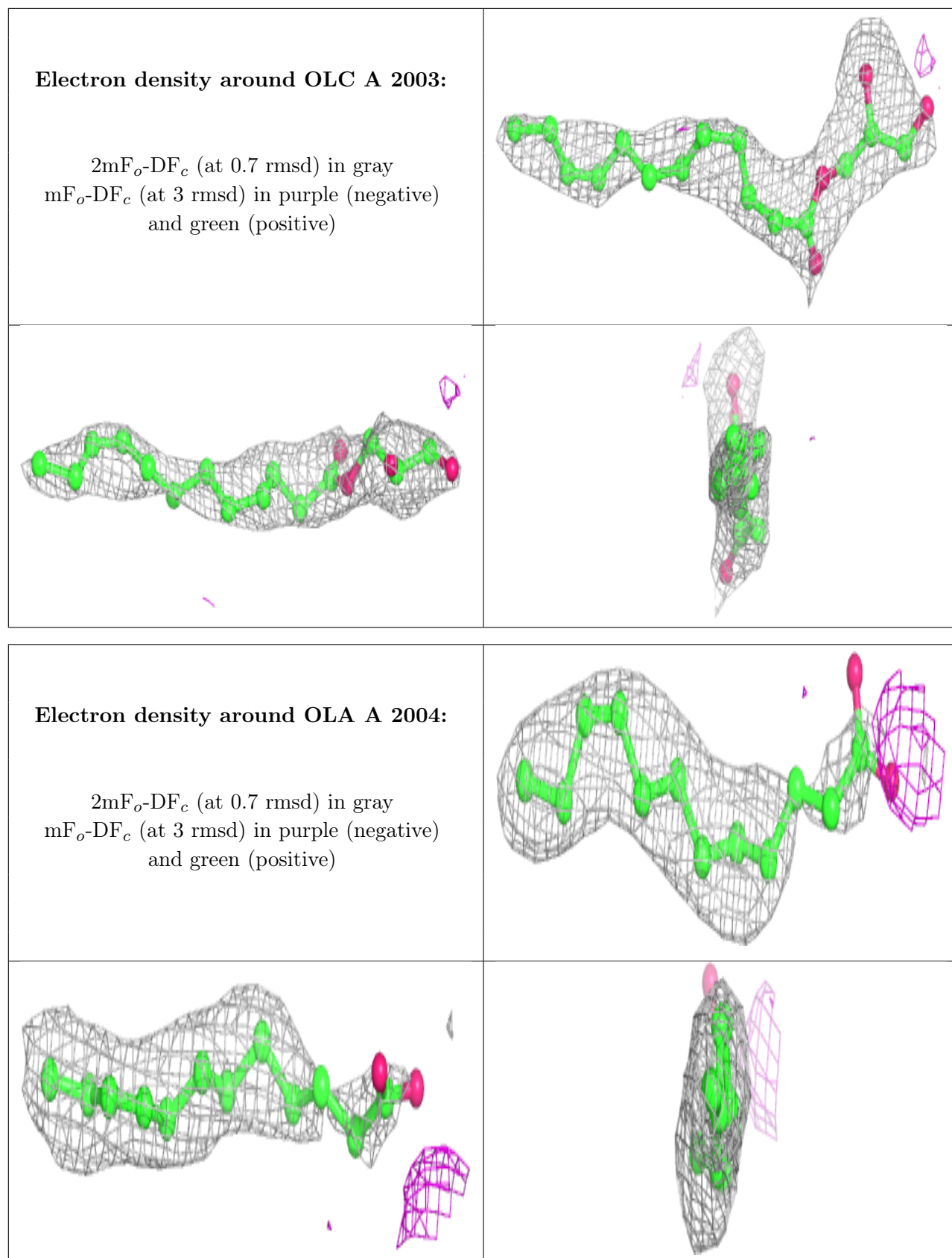
There are no monosaccharides in this entry.

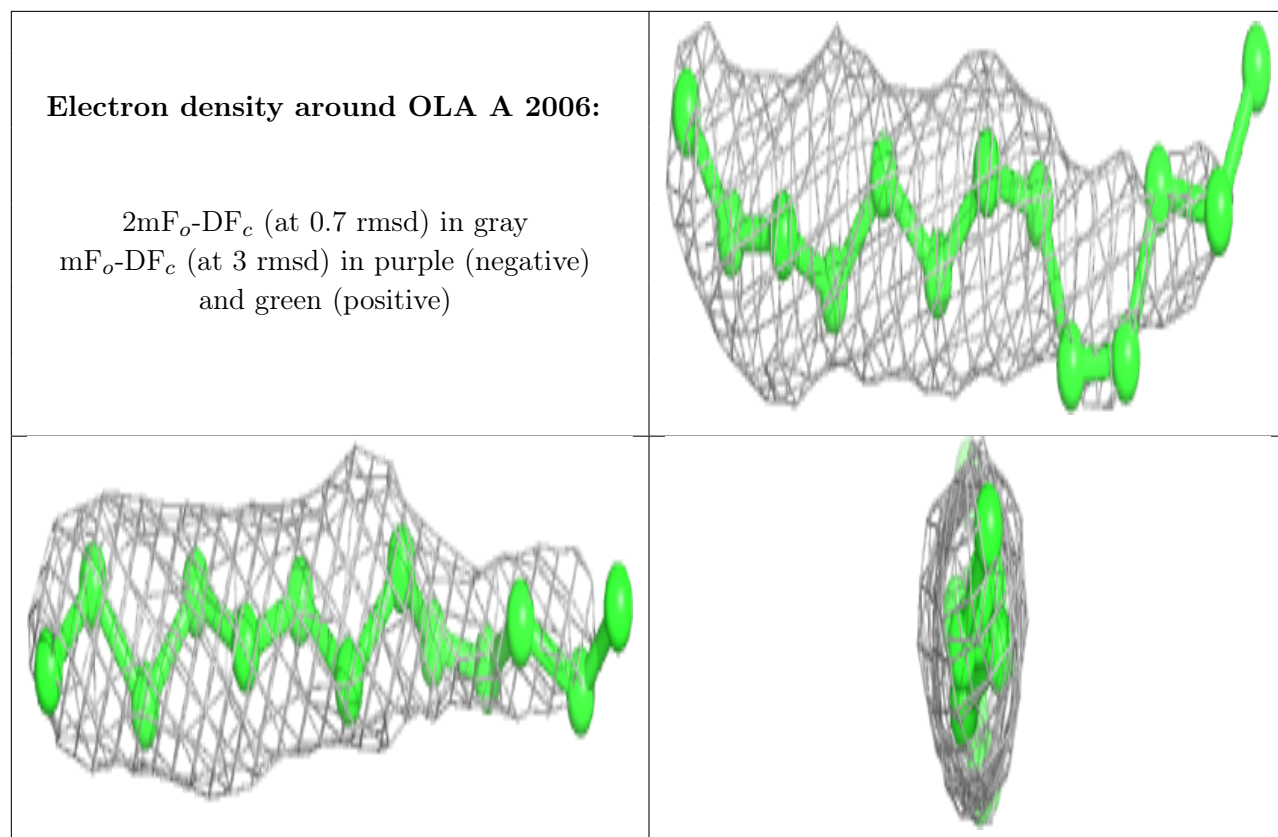
## 6.4 Ligands [\(i\)](#)

In the following table, the Atoms column lists the number of modelled atoms in the group and the number defined in the chemical component dictionary. The B-factors column lists the minimum, median, 95<sup>th</sup> percentile and maximum values of B factors of atoms in the group. The column labelled 'Q< 0.9' lists the number of atoms with occupancy less than 0.9.

Mol	Type	Chain	Res	Atoms	RSCC	RSR	B-factors( $\text{\AA}^2$ )	Q<0.9
4	OLC	A	2003	19/25	0.85	0.44	76,90,111,117	0
5	OLA	A	2004	14/20	0.85	0.34	48,79,114,115	0
6	PEG	A	2007	7/7	0.89	0.15	80,91,97,100	0
5	OLA	A	2006	13/20	0.90	0.32	78,89,109,110	0
5	OLA	A	2005	9/20	0.91	0.22	72,75,90,94	0
3	FMN	A	2002	31/31	0.95	0.14	45,64,75,85	0
2	ZDG	A	2001	33/37	0.95	0.26	109,115,137,153	0

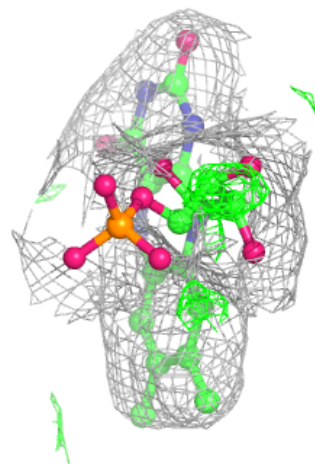
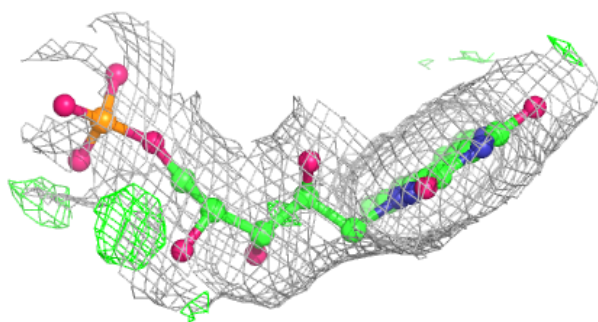
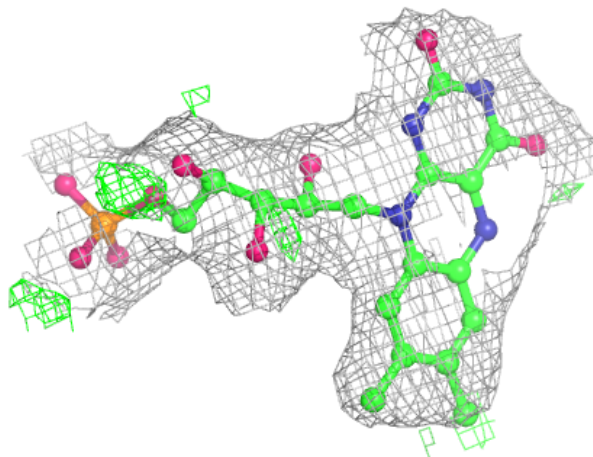
The following is a graphical depiction of the model fit to experimental electron density of all instances of the Ligand of Interest. In addition, ligands with molecular weight > 250 and outliers as shown on the geometry validation Tables will also be included. Each fit is shown from different orientation to approximate a three-dimensional view.

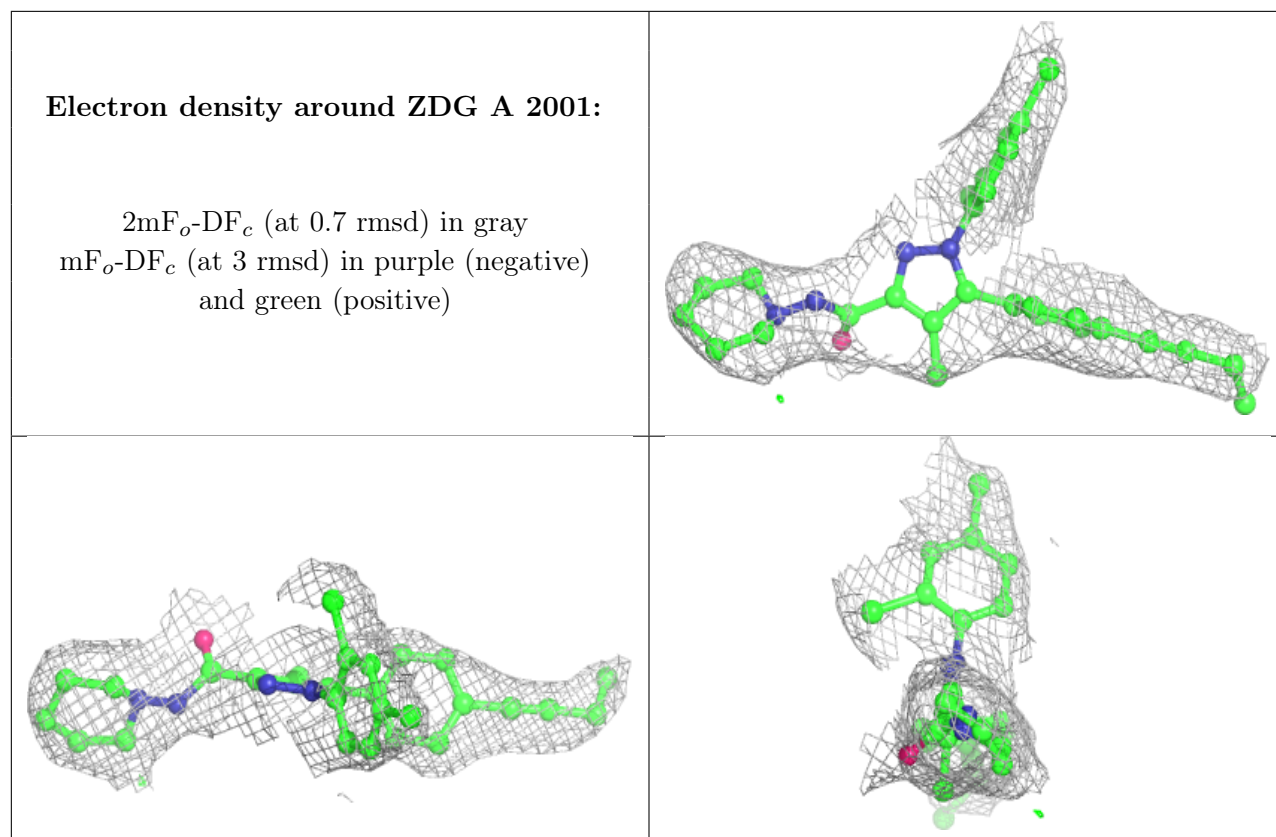




**Electron density around FMN A 2002:**

$2mF_o-DF_c$  (at 0.7 rmsd) in gray  
 $mF_o-DF_c$  (at 3 rmsd) in purple (negative)  
and green (positive)





## 6.5 Other polymers [i](#)

There are no such residues in this entry.