



Full wwPDB EM Validation Report ⓘ

Nov 16, 2023 – 07:06 PM EST

PDB ID : 8THG
EMDB ID : EMD-41261
Title : Cryo-EM structure of Nav1.7 with RLZ
Authors : Fan, X.; Huang, J.; Yan, N.
Deposited on : 2023-07-16
Resolution : 2.90 Å (reported)

This is a Full wwPDB EM Validation Report for a publicly released PDB entry.

We welcome your comments at validation@mail.wwpdb.org

A user guide is available at

<https://www.wwpdb.org/validation/2017/EMValidationReportHelp>

with specific help available everywhere you see the ⓘ symbol.

The types of validation reports are described at

<http://www.wwpdb.org/validation/2017/FAQs#types>.

The following versions of software and data (see [references ⓘ](#)) were used in the production of this report:

EMDB validation analysis : 0.0.1.dev70
Mogul : 1.8.5 (274361), CSD as541be (2020)
MolProbity : 4.02b-467
buster-report : 1.1.7 (2018)
Percentile statistics : 20191225.v01 (using entries in the PDB archive December 25th 2019)
MapQ : 1.9.9
Ideal geometry (proteins) : Engh & Huber (2001)
Ideal geometry (DNA, RNA) : Parkinson et al. (1996)
Validation Pipeline (wwPDB-VP) : 2.36

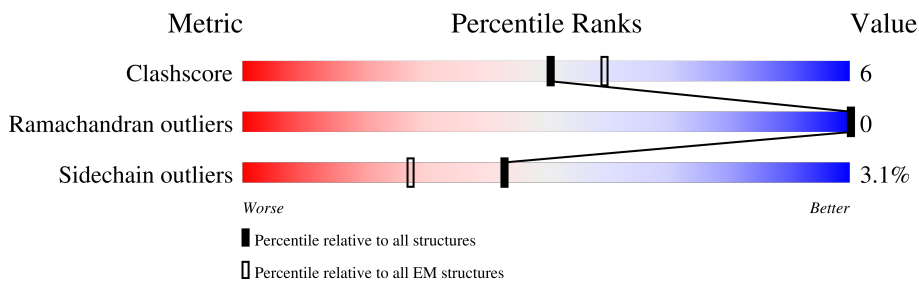
1 Overall quality at a glance

The following experimental techniques were used to determine the structure:

ELECTRON MICROSCOPY

The reported resolution of this entry is 2.90 Å.

Percentile scores (ranging between 0-100) for global validation metrics of the entry are shown in the following graphic. The table shows the number of entries on which the scores are based.



Metric	Whole archive (#Entries)	EM structures (#Entries)
Clashscore	158937	4297
Ramachandran outliers	154571	4023
Sidechain outliers	154315	3826

The table below summarises the geometric issues observed across the polymeric chains and their fit to the map. The red, orange, yellow and green segments of the bar indicate the fraction of residues that contain outliers for ≥ 3 , 2, 1 and 0 types of geometric quality criteria respectively. A grey segment represents the fraction of residues that are not modelled. The numeric value for each fraction is indicated below the corresponding segment, with a dot representing fractions $\leq 5\%$. The upper red bar (where present) indicates the fraction of residues that have poor fit to the EM map (all-atom inclusion $< 40\%$). The numeric value is given above the bar.

Mol	Chain	Length	Quality of chain
1	A	1988	
2	B	218	
3	C	215	
4	D	2	
4	E	2	
4	F	2	

2 Entry composition i

There are 11 unique types of molecules in this entry. The entry contains 13168 atoms, of which 0 are hydrogens and 0 are deuteriums.

In the tables below, the AltConf column contains the number of residues with at least one atom in alternate conformation and the Trace column contains the number of residues modelled with at most 2 atoms.

- Molecule 1 is a protein called Sodium channel protein type 9 subunit alpha.

Mol	Chain	Residues	Atoms					AltConf	Trace
			Total	C	N	O	S		
1	A	1273	10262	6802	1613	1770	77	0	0

- Molecule 2 is a protein called Sodium channel subunit beta-1.

Mol	Chain	Residues	Atoms					AltConf	Trace
			Total	C	N	O	S		
2	B	173	1416	902	232	272	10	0	0

- Molecule 3 is a protein called Sodium channel subunit beta-2.

Mol	Chain	Residues	Atoms					AltConf	Trace
			Total	C	N	O	S		
3	C	119	971	609	172	180	10	0	0

- Molecule 4 is an oligosaccharide called 2-acetamido-2-deoxy-beta-D-glucopyranose-(1-4)-2-acetamido-2-deoxy-beta-D-glucopyranose.



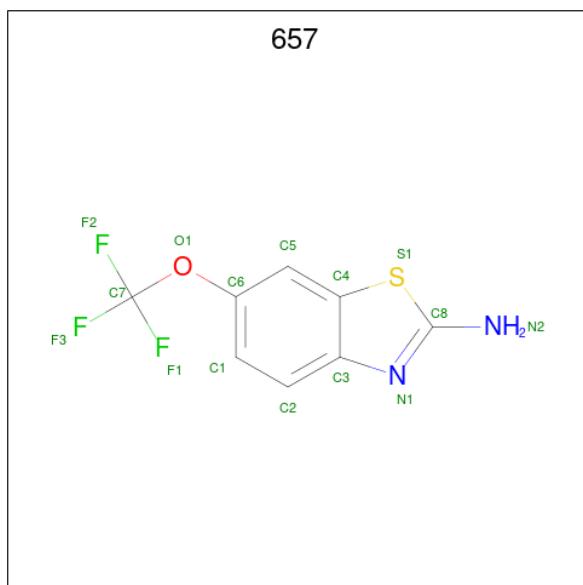
Mol	Chain	Residues	Atoms				AltConf	Trace
			Total	C	N	O		
4	D	2	28	16	2	10	0	0
4	E	2	28	16	2	10	0	0
4	F	2	28	16	2	10	0	0

- Molecule 5 is 2-acetamido-2-deoxy-beta-D-glucopyranose (three-letter code: NAG) (formula: C₈H₁₅NO₆).



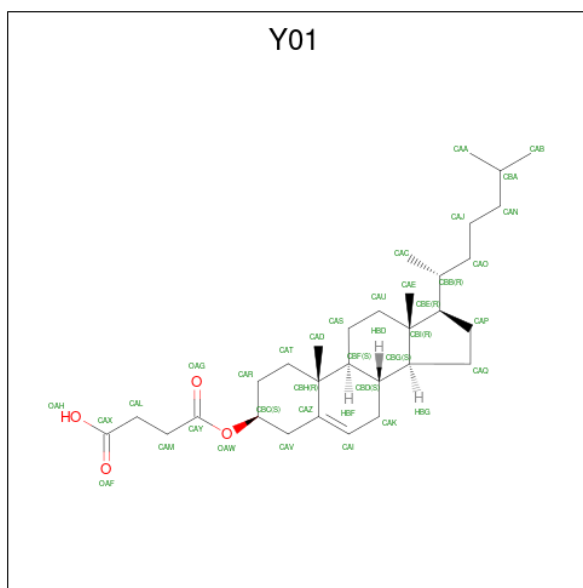
Mol	Chain	Residues	Atoms				AltConf
			Total	C	N	O	
5	A	1	Total 14	8	1	5	0
5	A	1	Total 14	8	1	5	0
5	B	1	Total 14	8	1	5	0
5	B	1	Total 14	8	1	5	0
5	B	1	Total 14	8	1	5	0

- Molecule 6 is 6-(trifluoromethoxy)-1,3-benzothiazol-2-amine (three-letter code: 657) (formula: C₈H₅F₃N₂OS) (labeled as "Ligand of Interest" by depositor).



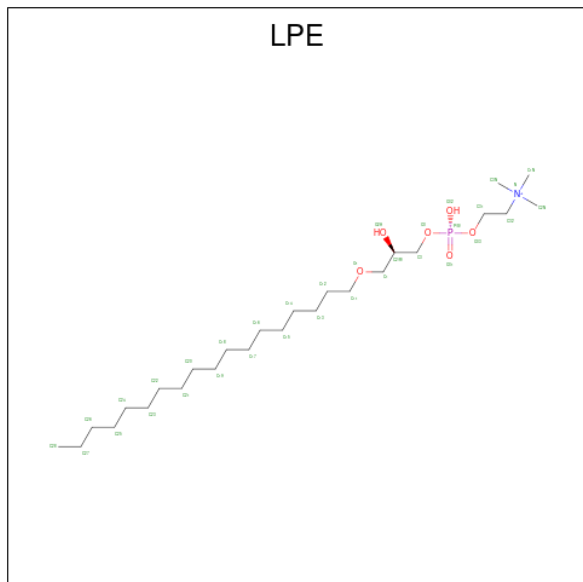
Mol	Chain	Residues	Atoms					AltConf	
			Total	C	F	N	O		S
6	A	1	15	8	3	2	1	1	0

- Molecule 7 is CHOLESTEROL HEMISUCCINATE (three-letter code: Y01) (formula: C₃₁H₅₀O₄).



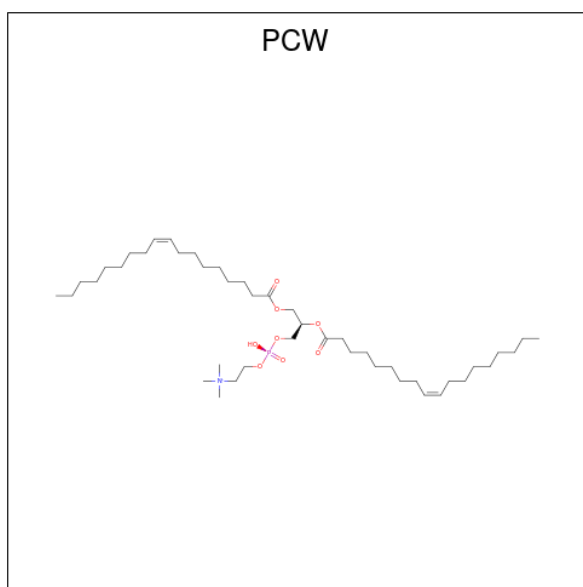
Mol	Chain	Residues	Atoms			AltConf
			Total	C	O	
7	A	1	35	31	4	0
7	A	1	35	31	4	0
7	A	1	35	31	4	0

- Molecule 8 is 1-O-OCTADECYL-SN-GLYCERO-3-PHOSPHOCHOLINE (three-letter code: LPE) (formula: $C_{26}H_{57}NO_6P$).



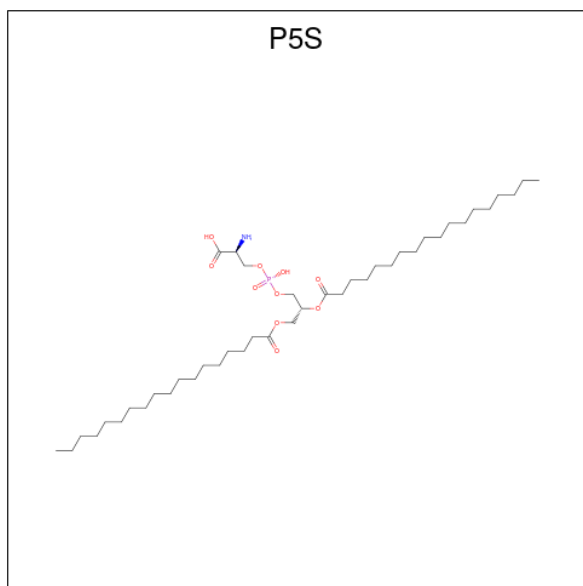
Mol	Chain	Residues	Atoms					AltConf
			Total	C	N	O	P	
8	A	1	25	17	1	6	1	0
8	A	1	28	20	1	6	1	0
8	A	1	25	17	1	6	1	0
8	A	1	25	17	1	6	1	0
8	A	1	25	17	1	6	1	0
8	A	1	25	17	1	6	1	0

- Molecule 9 is 1,2-DIOLEOYL-SN-GLYCERO-3-PHOSPHOCHOLINE (three-letter code: PCW) (formula: $C_{44}H_{85}NO_8P$).



Mol	Chain	Residues	Atoms					AltConf
			Total	C	N	O	P	
9	A	1	47	37	1	8	1	0

- Molecule 10 is O-[(R)-{[(2R)-2,3-bis(octadecanoyloxy)propyl]oxy}(hydroxy)phosphoryl]-L-serine (three-letter code: P5S) (formula: C₄₂H₈₂NO₁₀P).



Mol	Chain	Residues	Atoms					AltConf
			Total	C	N	O	P	
10	A	1	41	31	1	8	1	0

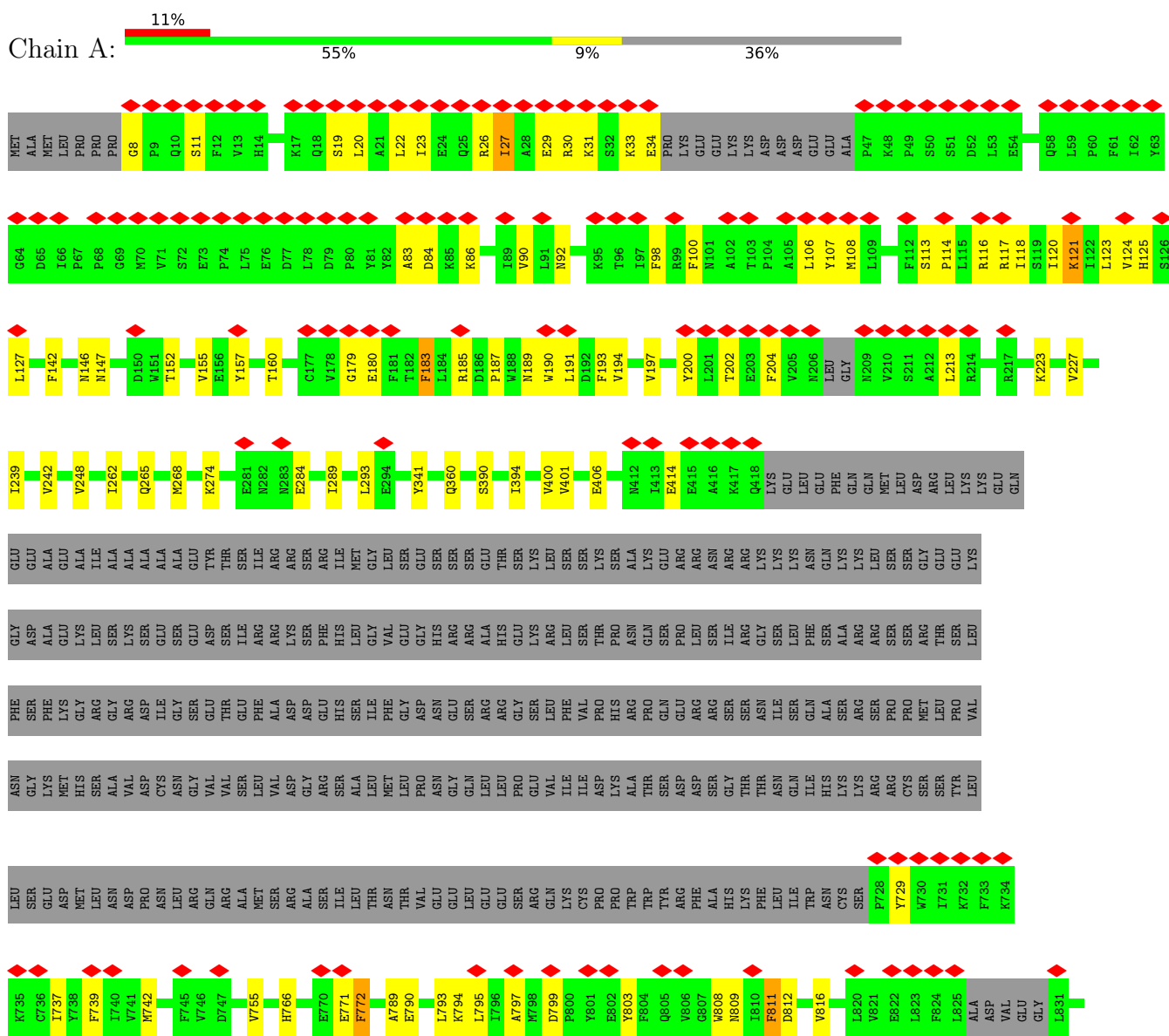
- Molecule 11 is water.

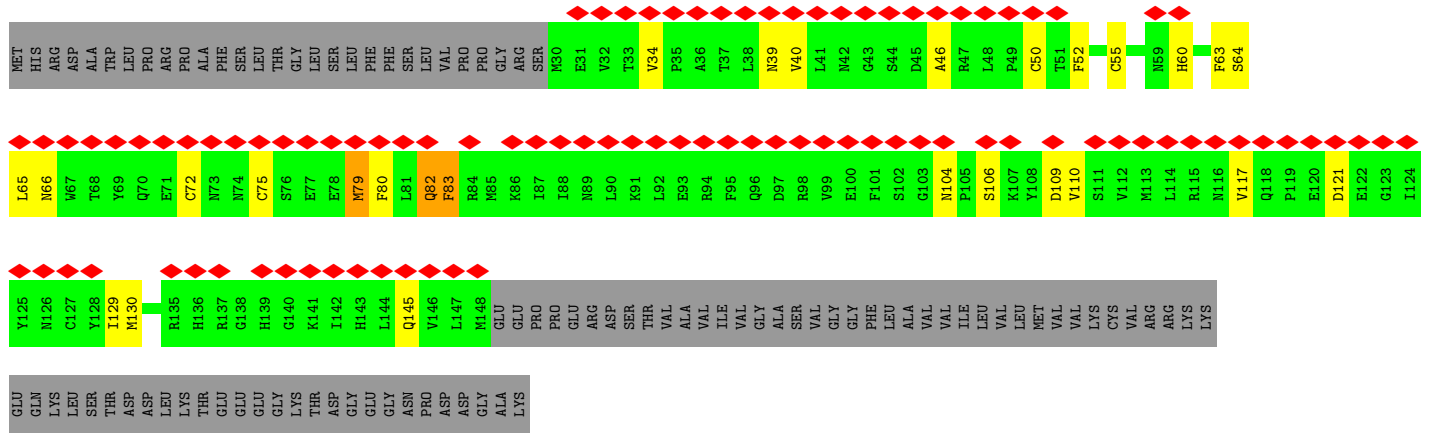
Mol	Chain	Residues	Atoms		AltConf
11	A	4	Total	O	0
			4	4	

3 Residue-property plots

These plots are drawn for all protein, RNA, DNA and oligosaccharide chains in the entry. The first graphic for a chain summarises the proportions of the various outlier classes displayed in the second graphic. The second graphic shows the sequence view annotated by issues in geometry and atom inclusion in map density. Residues are color-coded according to the number of geometric quality criteria for which they contain at least one outlier: green = 0, yellow = 1, orange = 2 and red = 3 or more. A red diamond above a residue indicates a poor fit to the EM map for this residue (all-atom inclusion < 40%). Stretches of 2 or more consecutive residues without any outlier are shown as a green connector. Residues present in the sample, but not in the model, are shown in grey.

- Molecule 1: Sodium channel protein type 9 subunit alpha





● Molecule 4: 2-acetamido-2-deoxy-beta-D-glucopyranose-(1-4)-2-acetamido-2-deoxy-beta-D-glucopyranose



● Molecule 4: 2-acetamido-2-deoxy-beta-D-glucopyranose-(1-4)-2-acetamido-2-deoxy-beta-D-glucopyranose



● Molecule 4: 2-acetamido-2-deoxy-beta-D-glucopyranose-(1-4)-2-acetamido-2-deoxy-beta-D-glucopyranose



4 Experimental information

Property	Value	Source
EM reconstruction method	SINGLE PARTICLE	Depositor
Imposed symmetry	POINT, Not provided	
Number of particles used	125461	Depositor
Resolution determination method	FSC 0.143 CUT-OFF	Depositor
CTF correction method	PHASE FLIPPING AND AMPLITUDE CORRECTION	Depositor
Microscope	FEI TITAN KRIOS	Depositor
Voltage (kV)	300	Depositor
Electron dose ($e^-/\text{\AA}^2$)	40	Depositor
Minimum defocus (nm)	1200	Depositor
Maximum defocus (nm)	1400	Depositor
Magnification	Not provided	
Image detector	FEI FALCON IV (4k x 4k)	Depositor
Maximum map value	1.190	Depositor
Minimum map value	-0.840	Depositor
Average map value	-0.001	Depositor
Map value standard deviation	0.033	Depositor
Recommended contour level	0.15	Depositor
Map size (Å)	265.216, 265.216, 265.216	wwPDB
Map dimensions	256, 256, 256	wwPDB
Map angles (°)	90.0, 90.0, 90.0	wwPDB
Pixel spacing (Å)	1.036, 1.036, 1.036	Depositor

5 Model quality [i](#)

5.1 Standard geometry [i](#)

Bond lengths and bond angles in the following residue types are not validated in this section: Y01, PCW, NAG, P5S, 657, LPE

The Z score for a bond length (or angle) is the number of standard deviations the observed value is removed from the expected value. A bond length (or angle) with $|Z| > 5$ is considered an outlier worth inspection. RMSZ is the root-mean-square of all Z scores of the bond lengths (or angles).

Mol	Chain	Bond lengths		Bond angles	
		RMSZ	# Z >5	RMSZ	# Z >5
1	A	0.29	0/10511	0.46	0/14239
2	B	0.26	0/1442	0.50	0/1949
3	C	0.25	0/993	0.52	0/1343
All	All	0.28	0/12946	0.47	0/17531

There are no bond length outliers.

There are no bond angle outliers.

There are no chirality outliers.

There are no planarity outliers.

5.2 Too-close contacts [i](#)

In the following table, the Non-H and H(model) columns list the number of non-hydrogen atoms and hydrogen atoms in the chain respectively. The H(added) column lists the number of hydrogen atoms added and optimized by MolProbity. The Clashes column lists the number of clashes within the asymmetric unit, whereas Symm-Clashes lists symmetry-related clashes.

Mol	Chain	Non-H	H(model)	H(added)	Clashes	Symm-Clashes
1	A	10262	0	10498	129	0
2	B	1416	0	1380	11	0
3	C	971	0	930	17	0
4	D	28	0	25	0	0
4	E	28	0	25	0	0
4	F	28	0	25	0	0
5	A	28	0	26	0	0
5	B	42	0	39	1	0
6	A	15	0	0	1	0
7	A	105	0	147	9	0

Continued on next page...

Continued from previous page...

Mol	Chain	Non-H	H(model)	H(added)	Clashes	Symm-Clashes
8	A	153	0	213	3	0
9	A	47	0	64	1	0
10	A	41	0	51	4	0
11	A	4	0	0	1	0
All	All	13168	0	13423	158	0

The all-atom clashscore is defined as the number of clashes found per 1000 atoms (including hydrogen atoms). The all-atom clashscore for this structure is 6.

All (158) close contacts within the same asymmetric unit are listed below, sorted by their clash magnitude.

Atom-1	Atom-2	Interatomic distance (Å)	Clash overlap (Å)
1:A:200:TYR:O	1:A:204:PHE:CD2	2.29	0.86
1:A:1634:LEU:HB3	10:A:2009:P5S:H43A	1.67	0.74
1:A:152:THR:O	1:A:152:THR:HG22	1.87	0.74
1:A:1621:LEU:HD22	10:A:2009:P5S:H32A	1.68	0.74
1:A:118:ILE:HA	1:A:121:LYS:HD2	1.71	0.73
1:A:187:PRO:HA	1:A:190:TRP:HD1	1.55	0.71
1:A:1701:ASP:OD2	1:A:1702:GLY:N	2.24	0.70
10:A:2009:P5S:H42A	10:A:2009:P5S:H27A	1.73	0.70
1:A:200:TYR:O	1:A:204:PHE:HD2	1.74	0.70
1:A:1308:ARG:HD2	8:A:2007:LPE:H1N3	1.73	0.69
1:A:147:ASN:O	1:A:147:ASN:OD1	2.12	0.68
1:A:179:GLY:O	1:A:185:ARG:NH2	2.27	0.68
1:A:1312:ASN:HD21	8:A:2007:LPE:H1N2	1.61	0.66
3:C:104:ASN:N	3:C:109:ASP:O	2.28	0.66
1:A:26:ARG:CD	1:A:83:ALA:HB1	2.25	0.66
1:A:120:ILE:O	1:A:124:VAL:HG13	1.96	0.65
1:A:26:ARG:HD2	1:A:83:ALA:O	1.96	0.65
2:B:92:TRP:O	2:B:96:ARG:NH2	2.29	0.65
3:C:65:LEU:O	3:C:82:GLN:NE2	2.29	0.65
1:A:1235:TYR:OH	2:B:171:THR:OG1	2.15	0.64
1:A:1531:THR:O	1:A:1534:VAL:HG12	1.98	0.63
2:B:69:LYS:NZ	2:B:81:GLU:OE2	2.31	0.63
1:A:30:ARG:HA	1:A:33:LYS:HE2	1.79	0.63
1:A:1373:LEU:CD2	1:A:1380:VAL:HG21	2.29	0.62
1:A:23:ILE:HG21	1:A:86:LYS:HA	1.82	0.61
1:A:1694:ILE:HG21	1:A:1703:LEU:HD12	1.81	0.61
1:A:100:PHE:CZ	1:A:120:ILE:HG23	2.36	0.61
1:A:20:LEU:HD11	1:A:86:LYS:HD3	1.83	0.61
3:C:66:ASN:OD1	3:C:82:GLN:NE2	2.34	0.61

Continued on next page...

Continued from previous page...

Atom-1	Atom-2	Interatomic distance (Å)	Clash overlap (Å)
1:A:26:ARG:HD3	1:A:83:ALA:HB1	1.82	0.60
1:A:248:VAL:HG21	1:A:400:VAL:HG21	1.83	0.60
1:A:1229:ALA:O	1:A:1232:ILE:HG22	2.01	0.60
1:A:187:PRO:HA	1:A:190:TRP:CD1	2.35	0.60
1:A:1255:THR:O	1:A:1255:THR:HG22	2.02	0.60
1:A:125:HIS:CD2	1:A:127:LEU:HB2	2.37	0.60
1:A:755:VAL:CG1	7:A:2004:Y01:HAC3	2.33	0.59
1:A:100:PHE:CE2	1:A:120:ILE:HG12	2.37	0.59
1:A:125:HIS:NE2	1:A:127:LEU:HB2	2.18	0.59
1:A:30:ARG:NH1	1:A:34:GLU:HG3	2.18	0.59
1:A:1358:ARG:NH2	1:A:1417:ASP:OD2	2.35	0.58
2:B:42:SER:OG	2:B:125:ARG:NH2	2.36	0.58
1:A:1230:ASP:OD2	1:A:1293:ARG:NH2	2.37	0.57
3:C:34:VAL:HG12	3:C:50:CYS:HA	1.86	0.57
1:A:262:ILE:HG12	1:A:1617:ILE:HD13	1.87	0.57
1:A:30:ARG:HD2	1:A:33:LYS:HE2	1.87	0.56
2:B:72:ARG:NH2	2:B:74:GLU:OE1	2.34	0.56
1:A:1229:ALA:HA	1:A:1232:ILE:HG22	1.88	0.55
1:A:341:TYR:CE1	9:A:2008:PCW:H72	2.41	0.55
1:A:1508:ILE:HD13	1:A:1567:ILE:HD11	1.89	0.55
1:A:1534:VAL:O	1:A:1534:VAL:HG22	2.08	0.54
1:A:113:SER:O	1:A:117:ARG:HG2	2.07	0.54
1:A:1364:VAL:HG22	1:A:1364:VAL:O	2.06	0.54
1:A:737:ILE:HG22	1:A:797:ALA:HB2	1.90	0.53
1:A:880:PHE:CG	1:A:951:VAL:HG22	2.43	0.53
1:A:180:GLU:O	1:A:185:ARG:NE	2.41	0.53
1:A:1354:THR:HG22	1:A:1379:ASN:HD22	1.73	0.53
1:A:92:ASN:ND2	1:A:124:VAL:O	2.42	0.52
2:B:96:ARG:NH1	5:B:301:NAG:O7	2.42	0.52
1:A:1680:ASN:ND2	1:A:1682:GLU:OE2	2.42	0.52
1:A:755:VAL:HG13	7:A:2004:Y01:HAC3	1.91	0.52
1:A:1436:TYR:HA	7:A:2005:Y01:HAC2	1.92	0.52
1:A:1552:VAL:O	1:A:1556:ILE:HG23	2.10	0.52
1:A:248:VAL:CG2	1:A:400:VAL:HG21	2.41	0.51
1:A:202:THR:HG23	1:A:213:LEU:HD13	1.91	0.51
1:A:837:PHE:CE1	7:A:2005:Y01:HAA2	2.46	0.51
1:A:31:LYS:HA	1:A:34:GLU:CD	2.30	0.51
1:A:121:LYS:O	1:A:124:VAL:HG22	2.11	0.50
1:A:1497:ILE:HG23	1:A:1572:TYR:HD2	1.76	0.50
1:A:360:GLN:NE2	1:A:390:SER:OG	2.44	0.50
1:A:1312:ASN:ND2	8:A:2007:LPE:H1N2	2.25	0.50

Continued on next page...

Continued from previous page...

Atom-1	Atom-2	Interatomic distance (Å)	Clash overlap (Å)
1:A:19:SER:HA	1:A:22:LEU:HD12	1.93	0.50
1:A:98:PHE:HD2	1:A:124:VAL:HG12	1.76	0.49
1:A:142:PHE:CE2	1:A:155:VAL:HG11	2.47	0.49
1:A:1658:TYR:HH	1:A:1742:SER:HG	1.59	0.49
1:A:29:GLU:O	1:A:33:LYS:HG3	2.12	0.49
1:A:30:ARG:HB2	1:A:84:ASP:OD2	2.13	0.49
1:A:1328:CYS:SG	1:A:1448:THR:HG23	2.54	0.48
1:A:1561:GLU:OE2	1:A:1622:ARG:NH2	2.36	0.48
2:B:38:ILE:HD11	2:B:108:ILE:HD11	1.96	0.48
6:A:2003:657:F3	6:A:2003:657:C5	2.52	0.48
3:C:39:ASN:OD1	3:C:145:GLN:NE2	2.41	0.48
1:A:193:PHE:O	1:A:197:VAL:HG13	2.13	0.48
1:A:274:LYS:NZ	11:A:2101:HOH:O	2.46	0.48
3:C:72:CYS:SG	3:C:75:CYS:N	2.87	0.48
1:A:114:PRO:HA	1:A:117:ARG:CZ	2.44	0.48
1:A:812:ASP:O	1:A:816:VAL:HG12	2.14	0.47
1:A:152:THR:O	1:A:152:THR:CG2	2.57	0.47
3:C:104:ASN:OD1	3:C:106:SER:OG	2.33	0.47
1:A:223:LYS:O	1:A:227:VAL:HG22	2.15	0.46
1:A:26:ARG:HB3	1:A:84:ASP:HA	1.98	0.46
1:A:1578:TRP:CD1	10:A:2009:P5S:H20	2.51	0.46
1:A:1402:VAL:HA	1:A:1408:TRP:HB3	1.97	0.46
3:C:40:VAL:HG11	3:C:46:ALA:HB2	1.98	0.46
1:A:239:ILE:O	1:A:242:VAL:HG12	2.16	0.45
1:A:1288:SER:O	1:A:1291:THR:HG22	2.17	0.45
2:B:173:TRP:NE1	2:B:177:GLU:OE1	2.49	0.45
1:A:27:ILE:HD13	1:A:27:ILE:HA	1.69	0.45
1:A:1513:THR:HG23	1:A:1513:THR:O	2.16	0.45
1:A:1576:VAL:O	1:A:1580:ILE:HG23	2.17	0.45
1:A:30:ARG:HA	1:A:33:LYS:CE	2.46	0.45
1:A:1755:TYR:N	1:A:1755:TYR:CD1	2.85	0.45
2:B:93:ASN:HD22	2:B:93:ASN:HA	1.70	0.45
1:A:812:ASP:OD2	1:A:812:ASP:C	2.54	0.45
3:C:65:LEU:HD13	3:C:66:ASN:N	2.32	0.45
1:A:1355:ASP:OD1	1:A:1355:ASP:N	2.37	0.44
1:A:808:TRP:HE3	1:A:811:PHE:CE1	2.34	0.44
1:A:1563:VAL:O	1:A:1567:ILE:HG23	2.17	0.44
1:A:1280:TYR:HB3	1:A:1283:LEU:HD22	1.99	0.44
1:A:1497:ILE:HG23	1:A:1572:TYR:CD2	2.52	0.44
1:A:360:GLN:HG3	1:A:390:SER:OG	2.17	0.44
1:A:106:LEU:O	1:A:107:TYR:HB2	2.17	0.44

Continued on next page...

Continued from previous page...

Atom-1	Atom-2	Interatomic distance (Å)	Clash overlap (Å)
1:A:390:SER:O	1:A:394:ILE:HD12	2.18	0.44
1:A:1587:ILE:O	1:A:1591:VAL:HG23	2.19	0.43
1:A:755:VAL:HG11	7:A:2004:Y01:HAC3	2.00	0.43
1:A:1581:PHE:HA	1:A:1584:VAL:HG12	2.00	0.43
7:A:2005:Y01:HAC1	7:A:2005:Y01:HAU2	2.00	0.43
1:A:1512:VAL:HG22	1:A:1512:VAL:O	2.18	0.43
1:A:90:VAL:HG11	1:A:124:VAL:HG11	1.99	0.43
1:A:146:ASN:OD1	1:A:147:ASN:N	2.51	0.43
1:A:8:GLY:O	1:A:11:SER:OG	2.26	0.43
1:A:1509:PHE:CD2	1:A:1509:PHE:C	2.91	0.43
1:A:289:ILE:HG22	1:A:293:LEU:HD11	1.99	0.43
1:A:401:VAL:HG11	1:A:960:LEU:HD12	2.01	0.43
1:A:183:PHE:O	1:A:189:ASN:ND2	2.52	0.43
1:A:742:MET:SD	1:A:794:LYS:NZ	2.89	0.43
1:A:794:LYS:HB3	1:A:803:TYR:HE2	1.83	0.43
1:A:1647:ILE:CG2	1:A:1750:VAL:HG13	2.49	0.43
1:A:1354:THR:OG1	1:A:1355:ASP:N	2.52	0.43
1:A:898:LYS:NZ	3:C:55:CYS:O	2.52	0.42
1:A:121:LYS:HA	1:A:124:VAL:HG22	2.00	0.42
1:A:1473:PHE:O	1:A:1646:ASN:ND2	2.52	0.42
2:B:71:LEU:HD13	2:B:78:LEU:HD11	2.00	0.42
3:C:52:PHE:CD1	3:C:129:ILE:HD13	2.54	0.42
1:A:789:ALA:O	1:A:793:LEU:HG	2.20	0.42
1:A:1520:SER:O	1:A:1523:VAL:HG22	2.19	0.42
1:A:157:TYR:O	1:A:160:THR:HG22	2.19	0.42
1:A:117:ARG:HG3	1:A:118:ILE:N	2.35	0.41
1:A:771:GLU:HG3	1:A:772:PHE:N	2.35	0.41
3:C:83:PHE:C	3:C:83:PHE:CD1	2.93	0.41
1:A:26:ARG:CD	1:A:83:ALA:O	2.65	0.41
3:C:65:LEU:HB3	3:C:83:PHE:HB3	2.03	0.41
1:A:795:LEU:O	1:A:799:ASP:N	2.50	0.41
1:A:849:TRP:CD2	7:A:2004:Y01:HAD3	2.56	0.41
1:A:1432:TYR:HB2	7:A:2005:Y01:CAR	2.50	0.41
1:A:117:ARG:HH11	1:A:118:ILE:HG13	1.86	0.41
1:A:118:ILE:O	1:A:121:LYS:HG2	2.21	0.41
1:A:1521:ILE:HD12	1:A:1561:GLU:OE1	2.20	0.41
1:A:1598:LEU:HA	1:A:1601:THR:HG22	2.02	0.41
3:C:60:HIS:HD1	3:C:83:PHE:HZ	1.69	0.41
3:C:110:VAL:HG13	3:C:110:VAL:O	2.20	0.41
3:C:117:VAL:HG13	3:C:121:ASP:OD2	2.20	0.41
3:C:79:MET:SD	3:C:80:PHE:N	2.93	0.40

Continued on next page...

Continued from previous page...

Atom-1	Atom-2	Interatomic distance (Å)	Clash overlap (Å)
1:A:1694:ILE:CG2	1:A:1703:LEU:HD12	2.50	0.40
1:A:121:LYS:HB3	1:A:121:LYS:HE3	1.48	0.40
1:A:284:GLU:HB3	1:A:289:ILE:HD11	2.04	0.40
1:A:803:TYR:CE1	1:A:809:ASN:HB3	2.56	0.40
1:A:1330:ILE:HD11	7:A:2004:Y01:HAA1	2.02	0.40
2:B:39:LEU:HD23	2:B:105:SER:OG	2.22	0.40

There are no symmetry-related clashes.

5.3 Torsion angles [i](#)

5.3.1 Protein backbone [i](#)

In the following table, the Percentiles column shows the percent Ramachandran outliers of the chain as a percentile score with respect to all PDB entries followed by that with respect to all EM entries.

The Analysed column shows the number of residues for which the backbone conformation was analysed, and the total number of residues.

Mol	Chain	Analysed	Favoured	Allowed	Outliers	Percentiles	
1	A	1261/1988 (63%)	1235 (98%)	26 (2%)	0	100	100
2	B	171/218 (78%)	170 (99%)	1 (1%)	0	100	100
3	C	117/215 (54%)	114 (97%)	3 (3%)	0	100	100
All	All	1549/2421 (64%)	1519 (98%)	30 (2%)	0	100	100

There are no Ramachandran outliers to report.

5.3.2 Protein sidechains [i](#)

In the following table, the Percentiles column shows the percent sidechain outliers of the chain as a percentile score with respect to all PDB entries followed by that with respect to all EM entries.

The Analysed column shows the number of residues for which the sidechain conformation was analysed, and the total number of residues.

Mol	Chain	Analysed	Rotameric	Outliers	Percentiles	
1	A	1136/1778 (64%)	1103 (97%)	33 (3%)	42	76

Continued on next page...

Continued from previous page...

Mol	Chain	Analysed	Rotameric	Outliers	Percentiles	
2	B	157/190 (83%)	153 (98%)	4 (2%)	47	78
3	C	111/193 (58%)	105 (95%)	6 (5%)	22	54
All	All	1404/2161 (65%)	1361 (97%)	43 (3%)	43	74

All (43) residues with a non-rotameric sidechain are listed below:

Mol	Chain	Res	Type
1	A	27	ILE
1	A	108	MET
1	A	116	ARG
1	A	121	LYS
1	A	123	LEU
1	A	183	PHE
1	A	191	LEU
1	A	194	VAL
1	A	265	GLN
1	A	268	MET
1	A	406	GLU
1	A	414	GLU
1	A	729	TYR
1	A	739	PHE
1	A	766	HIS
1	A	772	PHE
1	A	790	GLU
1	A	811	PHE
1	A	835	ARG
1	A	853	ASN
1	A	890	LYS
1	A	952	MET
1	A	982	ASP
1	A	1001	TYR
1	A	1014	PHE
1	A	1187	LYS
1	A	1251	LYS
1	A	1381	ARG
1	A	1408	TRP
1	A	1420	ASN
1	A	1570	ARG
1	A	1608	LEU
1	A	1718	LYS
2	B	44	LYS

Continued on next page...

Continued from previous page...

Mol	Chain	Res	Type
2	B	62	LYS
2	B	93	ASN
2	B	95	SER
3	C	63	PHE
3	C	64	SER
3	C	79	MET
3	C	82	GLN
3	C	83	PHE
3	C	130	MET

Sometimes sidechains can be flipped to improve hydrogen bonding and reduce clashes. All (4) such sidechains are listed below:

Mol	Chain	Res	Type
1	A	147	ASN
1	A	360	GLN
1	A	395	ASN
3	C	104	ASN

5.3.3 RNA [i](#)

There are no RNA molecules in this entry.

5.4 Non-standard residues in protein, DNA, RNA chains [i](#)

There are no non-standard protein/DNA/RNA residues in this entry.

5.5 Carbohydrates [i](#)

6 monosaccharides are modelled in this entry.

In the following table, the Counts columns list the number of bonds (or angles) for which Mogul statistics could be retrieved, the number of bonds (or angles) that are observed in the model and the number of bonds (or angles) that are defined in the Chemical Component Dictionary. The Link column lists molecule types, if any, to which the group is linked. The Z score for a bond length (or angle) is the number of standard deviations the observed value is removed from the expected value. A bond length (or angle) with $|Z| > 2$ is considered an outlier worth inspection. RMSZ is the root-mean-square of all Z scores of the bond lengths (or angles).

Mol	Type	Chain	Res	Link	Bond lengths			Bond angles		
					Counts	RMSZ	$\# Z > 2$	Counts	RMSZ	$\# Z > 2$
4	NAG	D	1	1,4	14,14,15	0.33	0	17,19,21	0.75	0

Mol	Type	Chain	Res	Link	Bond lengths			Bond angles		
					Counts	RMSZ	# Z > 2	Counts	RMSZ	# Z > 2
4	NAG	D	2	4	14,14,15	0.31	0	17,19,21	1.30	2 (11%)
4	NAG	E	1	1,4	14,14,15	0.31	0	17,19,21	1.29	2 (11%)
4	NAG	E	2	4	14,14,15	0.27	0	17,19,21	0.73	0
4	NAG	F	1	2,4	14,14,15	0.31	0	17,19,21	0.66	0
4	NAG	F	2	4	14,14,15	0.29	0	17,19,21	0.86	0

In the following table, the Chirals column lists the number of chiral outliers, the number of chiral centers analysed, the number of these observed in the model and the number defined in the Chemical Component Dictionary. Similar counts are reported in the Torsion and Rings columns. '-' means no outliers of that kind were identified.

Mol	Type	Chain	Res	Link	Chirals	Torsions	Rings
4	NAG	D	1	1,4	-	0/6/23/26	0/1/1/1
4	NAG	D	2	4	-	2/6/23/26	0/1/1/1
4	NAG	E	1	1,4	-	0/6/23/26	0/1/1/1
4	NAG	E	2	4	-	0/6/23/26	0/1/1/1
4	NAG	F	1	2,4	-	0/6/23/26	0/1/1/1
4	NAG	F	2	4	-	0/6/23/26	0/1/1/1

There are no bond length outliers.

All (4) bond angle outliers are listed below:

Mol	Chain	Res	Type	Atoms	Z	Observed(°)	Ideal(°)
4	D	2	NAG	C8-C7-N2	3.08	121.31	116.10
4	D	2	NAG	C2-N2-C7	3.05	127.24	122.90
4	E	1	NAG	C4-C3-C2	-2.90	106.76	111.02
4	E	1	NAG	C1-O5-C5	2.31	115.32	112.19

There are no chirality outliers.

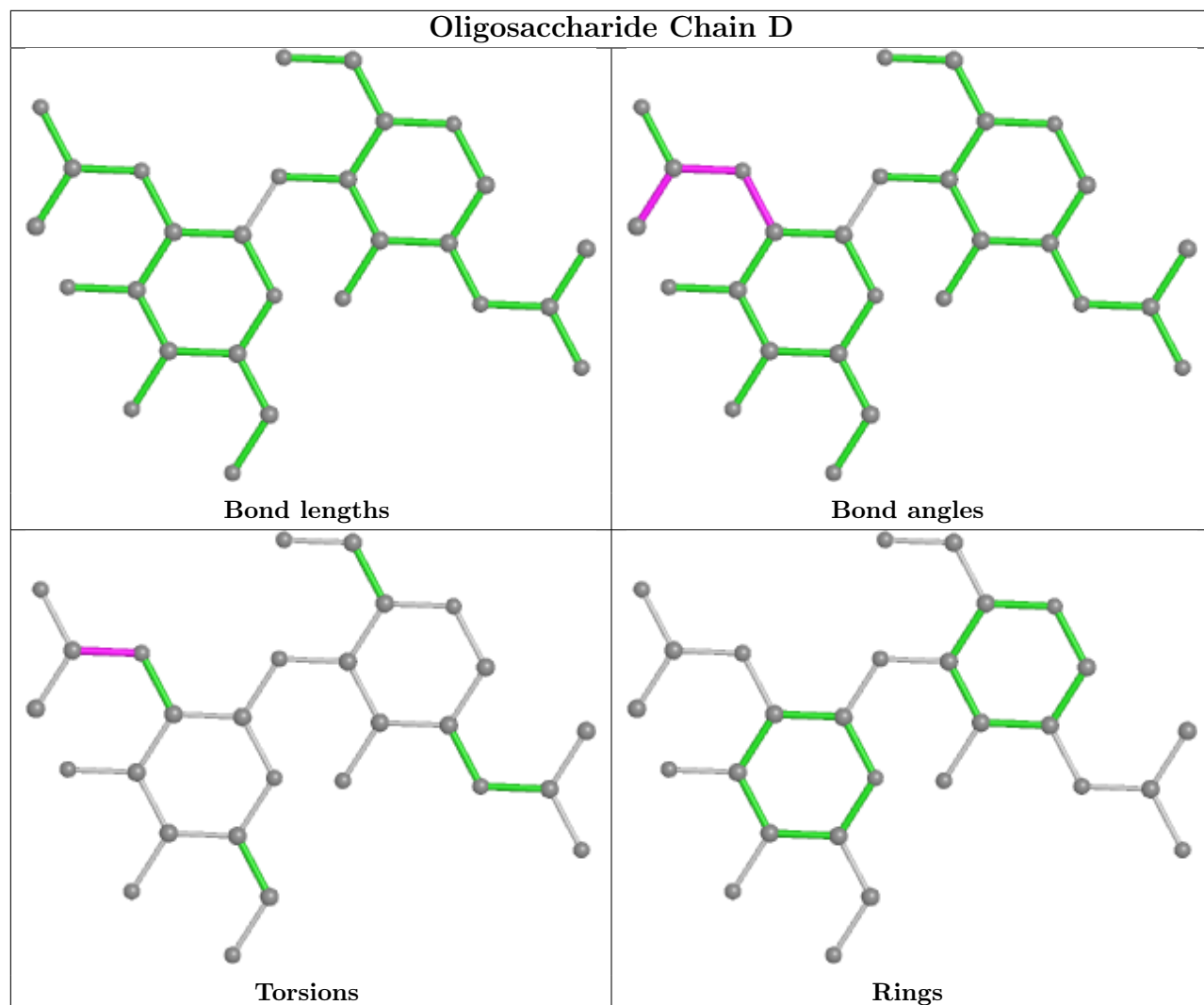
All (2) torsion outliers are listed below:

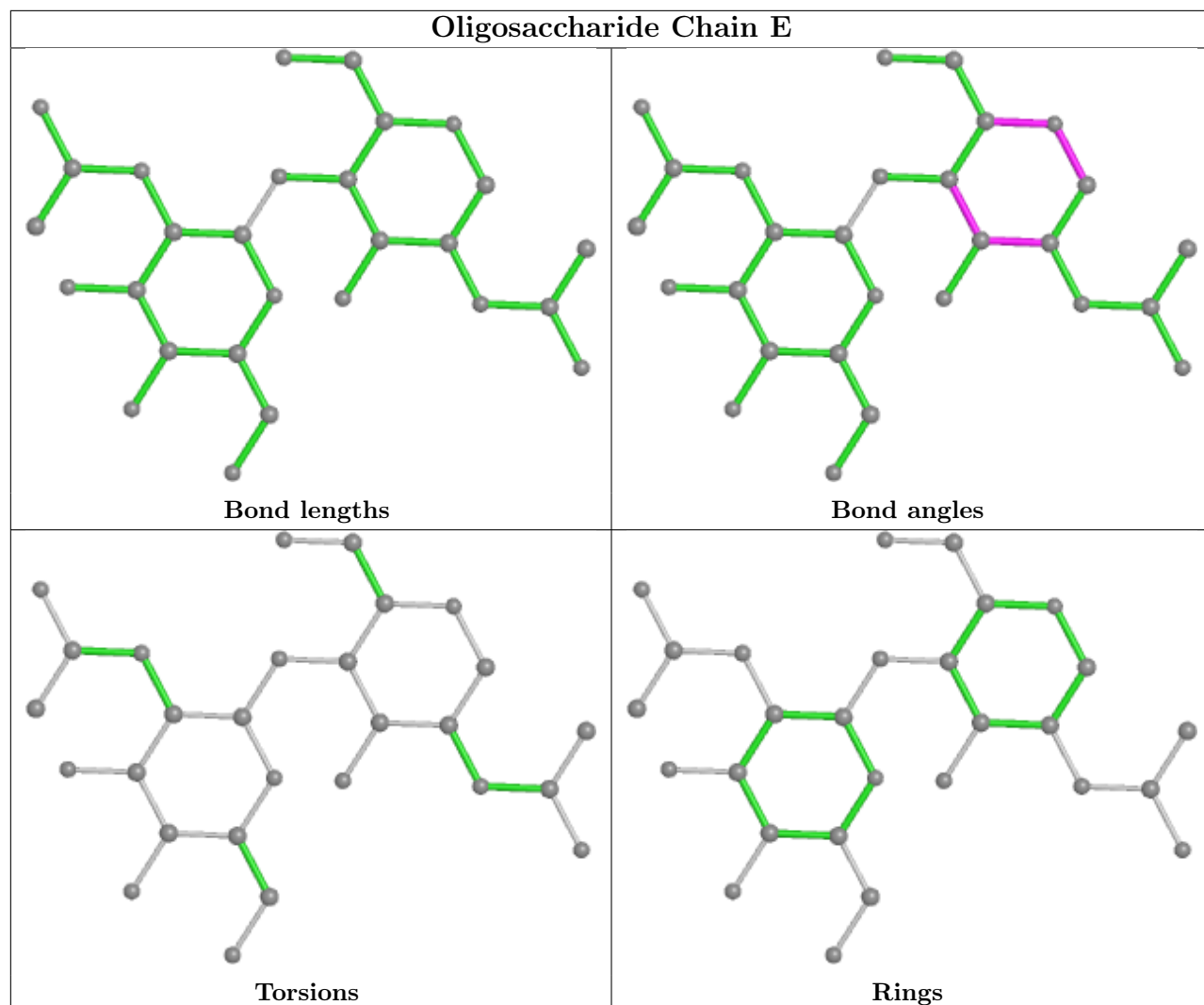
Mol	Chain	Res	Type	Atoms
4	D	2	NAG	C8-C7-N2-C2
4	D	2	NAG	O7-C7-N2-C2

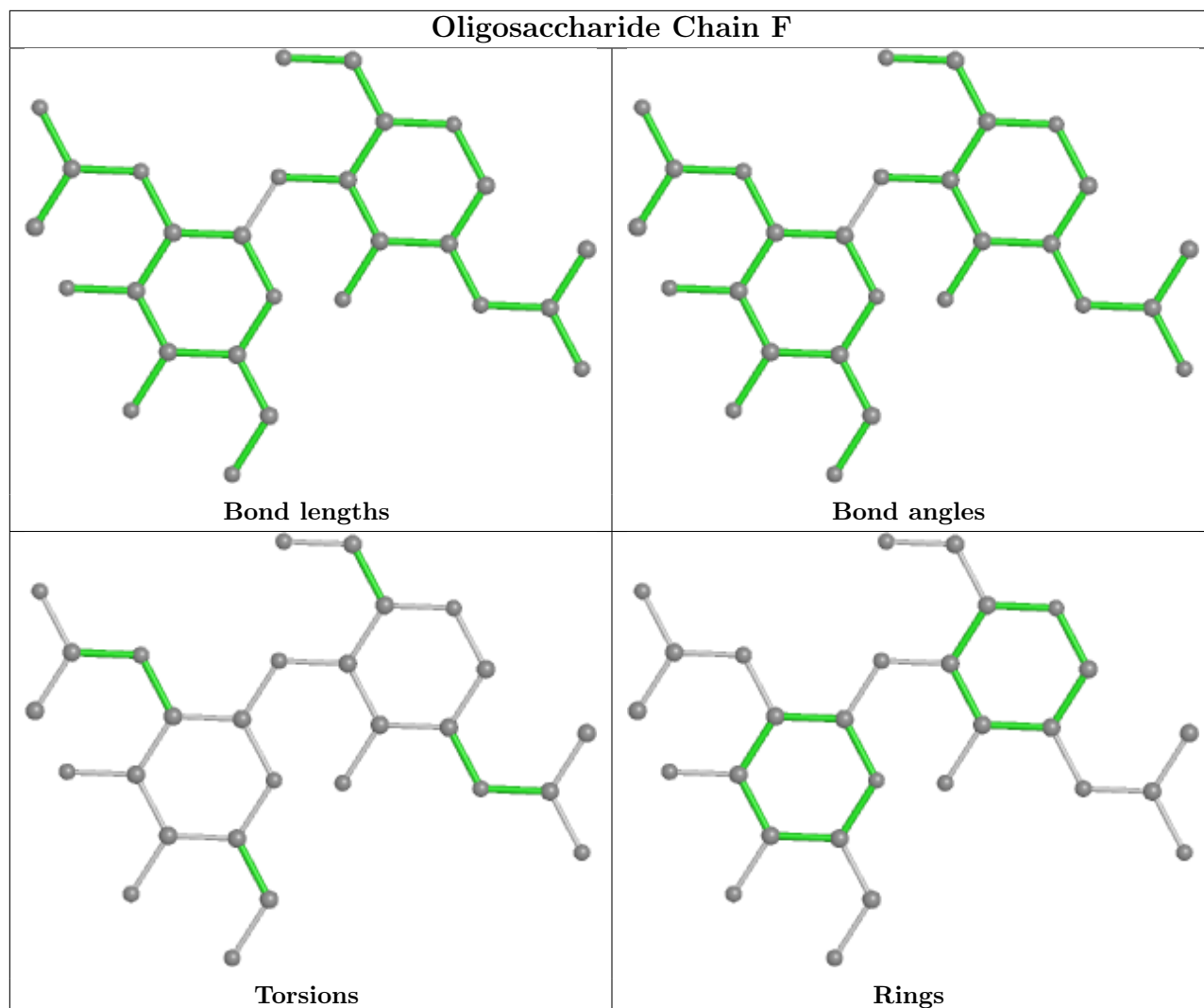
There are no ring outliers.

No monomer is involved in short contacts.

The following is a two-dimensional graphical depiction of Mogul quality analysis of bond lengths, bond angles, torsion angles, and ring geometry for oligosaccharide.







5.6 Ligand geometry [i](#)

17 ligands are modelled in this entry.

In the following table, the Counts columns list the number of bonds (or angles) for which Mogul statistics could be retrieved, the number of bonds (or angles) that are observed in the model and the number of bonds (or angles) that are defined in the Chemical Component Dictionary. The Link column lists molecule types, if any, to which the group is linked. The Z score for a bond length (or angle) is the number of standard deviations the observed value is removed from the expected value. A bond length (or angle) with $|Z| > 2$ is considered an outlier worth inspection. RMSZ is the root-mean-square of all Z scores of the bond lengths (or angles).

Mol	Type	Chain	Res	Link	Bond lengths			Bond angles		
					Counts	RMSZ	$\# Z > 2$	Counts	RMSZ	$\# Z > 2$
10	P5S	A	2009	-	40,40,53	0.31	0	43,45,60	0.37	0
5	NAG	A	2001	1	14,14,15	0.31	0	17,19,21	0.66	0
8	LPE	A	2007	-	27,27,33	0.28	0	31,33,39	0.33	0
5	NAG	B	302	2	14,14,15	0.27	0	17,19,21	0.50	0

Mol	Type	Chain	Res	Link	Bond lengths			Bond angles		
					Counts	RMSZ	# Z > 2	Counts	RMSZ	# Z > 2
5	NAG	A	2002	1	14,14,15	0.33	0	17,19,21	0.72	0
7	Y01	A	2014	-	38,38,38	0.47	0	57,57,57	0.62	1 (1%)
7	Y01	A	2005	-	38,38,38	0.46	0	57,57,57	0.54	0
8	LPE	A	2013	-	24,24,33	0.27	0	28,30,39	0.35	0
9	PCW	A	2008	-	46,46,53	0.40	0	52,54,61	0.36	0
5	NAG	B	303	2	14,14,15	0.28	0	17,19,21	0.86	1 (5%)
6	657	A	2003	-	13,16,16	4.91	7 (53%)	19,24,24	1.23	3 (15%)
8	LPE	A	2010	-	24,24,33	0.30	0	28,30,39	0.34	0
5	NAG	B	301	2	14,14,15	0.26	0	17,19,21	0.75	0
8	LPE	A	2012	-	24,24,33	0.31	0	28,30,39	0.43	0
8	LPE	A	2006	-	24,24,33	0.33	0	25,27,39	0.42	0
7	Y01	A	2004	-	38,38,38	0.46	0	57,57,57	0.67	0
8	LPE	A	2011	-	24,24,33	0.31	0	28,30,39	0.43	0

In the following table, the Chirals column lists the number of chiral outliers, the number of chiral centers analysed, the number of these observed in the model and the number defined in the Chemical Component Dictionary. Similar counts are reported in the Torsion and Rings columns. '-' means no outliers of that kind were identified.

Mol	Type	Chain	Res	Link	Chirals	Torsions	Rings
10	P5S	A	2009	-	-	9/44/44/59	-
5	NAG	A	2001	1	-	0/6/23/26	0/1/1/1
8	LPE	A	2007	-	-	15/28/28/34	-
5	NAG	B	302	2	-	0/6/23/26	0/1/1/1
5	NAG	A	2002	1	-	2/6/23/26	0/1/1/1
7	Y01	A	2014	-	-	11/19/77/77	0/4/4/4
7	Y01	A	2005	-	-	4/19/77/77	0/4/4/4
8	LPE	A	2013	-	-	3/25/25/34	-
9	PCW	A	2008	-	-	21/50/50/57	-
5	NAG	B	303	2	-	0/6/23/26	0/1/1/1
6	657	A	2003	-	-	2/5/5/5	0/2/2/2
8	LPE	A	2010	-	-	17/25/25/34	-
5	NAG	B	301	2	-	0/6/23/26	0/1/1/1
8	LPE	A	2012	-	-	12/25/25/34	-
8	LPE	A	2006	-	-	9/25/25/34	-
7	Y01	A	2004	-	-	11/19/77/77	0/4/4/4
8	LPE	A	2011	-	-	15/25/25/34	-

All (7) bond length outliers are listed below:

Mol	Chain	Res	Type	Atoms	Z	Observed(Å)	Ideal(Å)
6	A	2003	657	C5-C6	7.92	1.51	1.37
6	A	2003	657	C5-C4	7.58	1.54	1.38
6	A	2003	657	C2-C3	7.44	1.54	1.41
6	A	2003	657	C2-C1	7.17	1.51	1.36
6	A	2003	657	C1-C6	5.95	1.50	1.38
6	A	2003	657	C3-N1	5.78	1.57	1.38
6	A	2003	657	C8-N2	3.43	1.45	1.35

All (5) bond angle outliers are listed below:

Mol	Chain	Res	Type	Atoms	Z	Observed(°)	Ideal(°)
6	A	2003	657	C5-C4-S1	3.22	131.53	125.10
6	A	2003	657	C3-C4-S1	-2.81	108.12	111.85
7	A	2014	Y01	CAP-CBE-CBB	2.04	115.30	112.15
6	A	2003	657	N2-C8-N1	2.03	125.82	123.19
5	B	303	NAG	C1-O5-C5	2.02	114.93	112.19

There are no chirality outliers.

All (131) torsion outliers are listed below:

Mol	Chain	Res	Type	Atoms
7	A	2004	Y01	OAG-CAY-OAW-CBC
7	A	2004	Y01	CAM-CAY-OAW-CBC
8	A	2006	LPE	O2H-C2-C3-O3
8	A	2006	LPE	O33-C31-C32-N
8	A	2007	LPE	C1-C2-C3-O3
8	A	2007	LPE	C3-O3-P-O31
8	A	2007	LPE	C3-O3-P-O33
8	A	2007	LPE	C31-O33-P-O3
8	A	2007	LPE	O33-C31-C32-N
8	A	2010	LPE	C3-O3-P-O31
8	A	2010	LPE	C31-O33-P-O3
8	A	2010	LPE	C31-O33-P-O31
8	A	2010	LPE	C31-O33-P-O32
8	A	2010	LPE	O33-C31-C32-N
8	A	2011	LPE	O1-C1-C2-O2H
8	A	2011	LPE	C32-C31-O33-P
8	A	2012	LPE	O1-C1-C2-O2H
8	A	2012	LPE	C31-O33-P-O32
8	A	2012	LPE	O33-C31-C32-N
9	A	2008	PCW	C4-O4P-P-O2P
10	A	2009	P5S	N-CA-CB-OG

Continued on next page...

Continued from previous page...

Mol	Chain	Res	Type	Atoms
7	A	2014	Y01	CAJ-CAO-CBB-CAC
8	A	2007	LPE	O2H-C2-C3-O3
9	A	2008	PCW	C12-C11-O3-C3
8	A	2007	LPE	O1-C1-C2-O2H
7	A	2004	Y01	CAJ-CAO-CBB-CBE
9	A	2008	PCW	O11-C11-O3-C3
8	A	2011	LPE	C1-C2-C3-O3
9	A	2008	PCW	C4-C5-N-C8
7	A	2014	Y01	CAO-CBB-CBE-CBI
7	A	2004	Y01	CAX-CAL-CAM-CAY
7	A	2014	Y01	CAJ-CAO-CBB-CBE
8	A	2010	LPE	O2H-C2-C3-O3
7	A	2004	Y01	CAJ-CAO-CBB-CAC
9	A	2008	PCW	C31-C32-C33-C34
7	A	2014	Y01	CAC-CBB-CBE-CAP
8	A	2010	LPE	C31-C32-N-C2N
9	A	2008	PCW	C4-C5-N-C6
7	A	2014	Y01	CAC-CBB-CBE-CBI
7	A	2005	Y01	CAJ-CAO-CBB-CBE
7	A	2004	Y01	CAN-CAJ-CAO-CBB
8	A	2010	LPE	C3-O3-P-O33
8	A	2011	LPE	C31-O33-P-O3
8	A	2012	LPE	C31-O33-P-O3
9	A	2008	PCW	C4-O4P-P-O3P
8	A	2010	LPE	C1-C2-C3-O3
8	A	2011	LPE	O1-C1-C2-C3
8	A	2012	LPE	O1-C1-C2-C3
8	A	2012	LPE	O1-C11-C12-C13
8	A	2011	LPE	C15-C16-C17-C18
8	A	2011	LPE	O2H-C2-C3-O3
8	A	2012	LPE	C15-C16-C17-C18
8	A	2010	LPE	C15-C16-C17-C18
8	A	2011	LPE	C12-C13-C14-C15
7	A	2005	Y01	CAJ-CAO-CBB-CAC
7	A	2014	Y01	CAM-CAY-OAW-CBC
10	A	2009	P5S	C39-C38-O37-C2
9	A	2008	PCW	C13-C14-C15-C16
8	A	2006	LPE	C1-C2-C3-O3
7	A	2014	Y01	OAG-CAY-OAW-CBC
8	A	2010	LPE	C31-C32-N-C1N
9	A	2008	PCW	C4-C5-N-C7
10	A	2009	P5S	O47-C38-O37-C2

Continued on next page...

Continued from previous page...

Mol	Chain	Res	Type	Atoms
8	A	2010	LPE	C31-C32-N-C3N
8	A	2010	LPE	C2-C1-O1-C11
9	A	2008	PCW	C1-O3P-P-O4P
8	A	2010	LPE	C14-C15-C16-C17
8	A	2012	LPE	C12-C13-C14-C15
8	A	2006	LPE	C12-C13-C14-C15
8	A	2012	LPE	C13-C14-C15-C16
8	A	2010	LPE	C11-C12-C13-C14
8	A	2007	LPE	C14-C15-C16-C17
8	A	2007	LPE	C2-C3-O3-P
9	A	2008	PCW	C22-C23-C24-C25
9	A	2008	PCW	C18-C19-C20-C21
8	A	2007	LPE	O1-C11-C12-C13
8	A	2006	LPE	C11-C12-C13-C14
9	A	2008	PCW	C14-C15-C16-C17
9	A	2008	PCW	C12-C13-C14-C15
9	A	2008	PCW	C32-C33-C34-C35
10	A	2009	P5S	C41-C42-C43-C44
10	A	2009	P5S	CB-OG-P12-O16
8	A	2006	LPE	C19-C20-C21-C22
8	A	2007	LPE	C31-O33-P-O32
8	A	2010	LPE	C3-O3-P-O32
8	A	2011	LPE	C31-O33-P-O32
9	A	2008	PCW	C4-O4P-P-O1P
8	A	2007	LPE	C32-C31-O33-P
8	A	2010	LPE	C32-C31-O33-P
8	A	2012	LPE	C32-C31-O33-P
10	A	2009	P5S	CA-CB-OG-P12
8	A	2006	LPE	O1-C1-C2-O2H
8	A	2006	LPE	C2-C1-O1-C11
8	A	2011	LPE	O33-C31-C32-N
8	A	2013	LPE	O33-C31-C32-N
9	A	2008	PCW	O4P-C4-C5-N
8	A	2011	LPE	C12-C11-O1-C1
7	A	2014	Y01	CAJ-CAN-CBA-CAB
5	A	2002	NAG	C4-C5-C6-O6
8	A	2007	LPE	C12-C11-O1-C1
8	A	2011	LPE	C2-C3-O3-P
8	A	2012	LPE	C3-O3-P-O33
8	A	2013	LPE	C3-O3-P-O33
8	A	2013	LPE	C31-O33-P-O3
8	A	2006	LPE	C13-C14-C15-C16

Continued on next page...

Continued from previous page...

Mol	Chain	Res	Type	Atoms
9	A	2008	PCW	C37-C38-C39-C40
8	A	2007	LPE	C12-C13-C14-C15
7	A	2014	Y01	CAO-CBB-CBE-CAP
5	A	2002	NAG	O5-C5-C6-O6
8	A	2011	LPE	C13-C14-C15-C16
6	A	2003	657	C5-C6-O1-C7
7	A	2014	Y01	CAJ-CAN-CBA-CAA
7	A	2004	Y01	CAM-CAL-CAX-OAF
8	A	2007	LPE	O1-C1-C2-C3
10	A	2009	P5S	C27-C28-C29-C30
7	A	2004	Y01	CAM-CAL-CAX-OAH
8	A	2011	LPE	C2-C1-O1-C11
7	A	2004	Y01	CAO-CAJ-CAN-CBA
10	A	2009	P5S	C40-C41-C42-C43
9	A	2008	PCW	C19-C20-C21-C22
8	A	2011	LPE	C14-C15-C16-C17
6	A	2003	657	C1-C6-O1-C7
7	A	2004	Y01	CAL-CAM-CAY-OAW
9	A	2008	PCW	C39-C40-C41-C42
7	A	2005	Y01	CAL-CAM-CAY-OAW
7	A	2004	Y01	CAL-CAM-CAY-OAG
7	A	2005	Y01	CAL-CAM-CAY-OAG
8	A	2012	LPE	C3-O3-P-O31
9	A	2008	PCW	C1-O3P-P-O2P
10	A	2009	P5S	C2-C1-O19-C17
7	A	2014	Y01	CAM-CAL-CAX-OAH

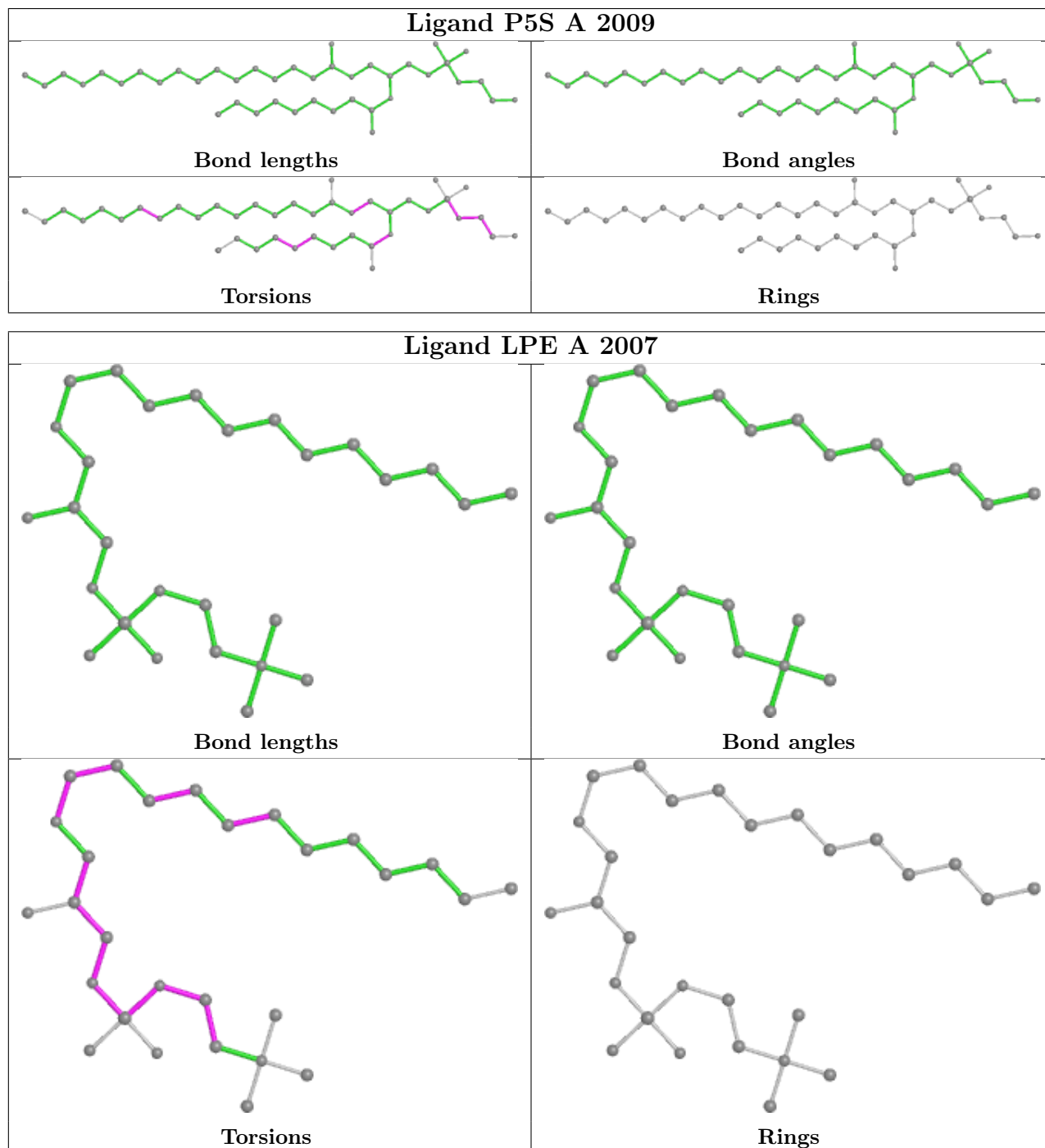
There are no ring outliers.

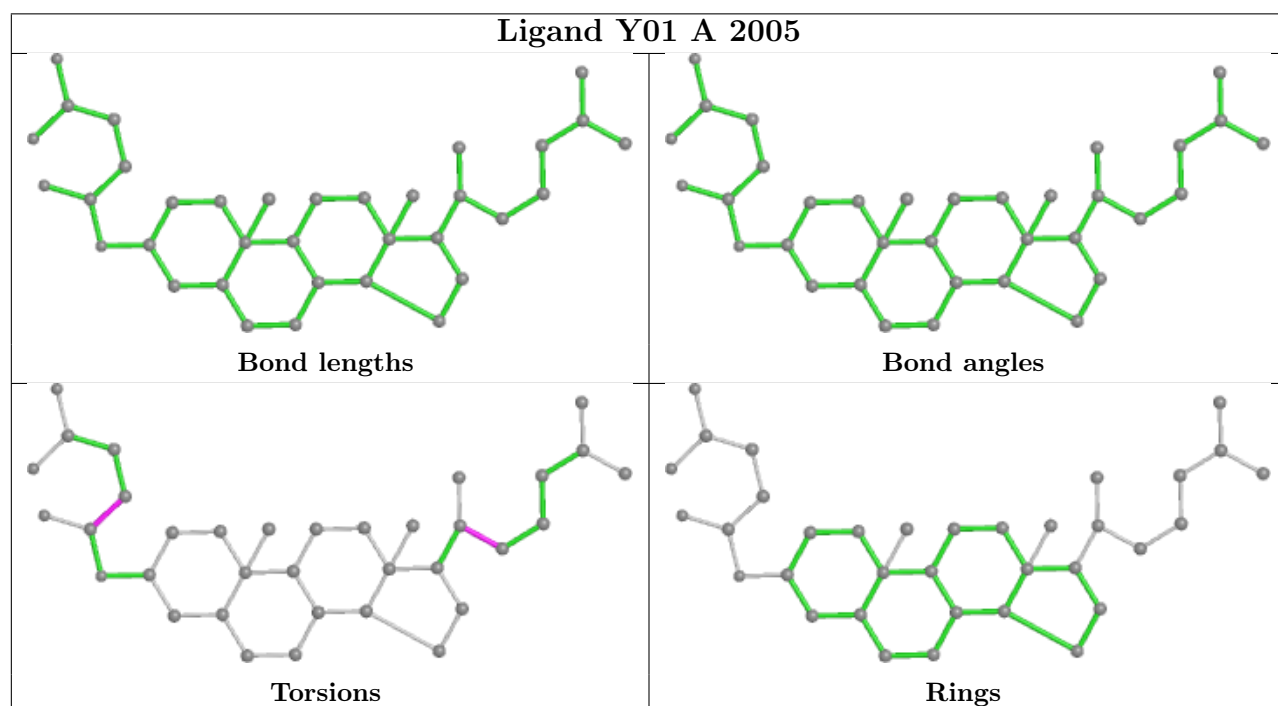
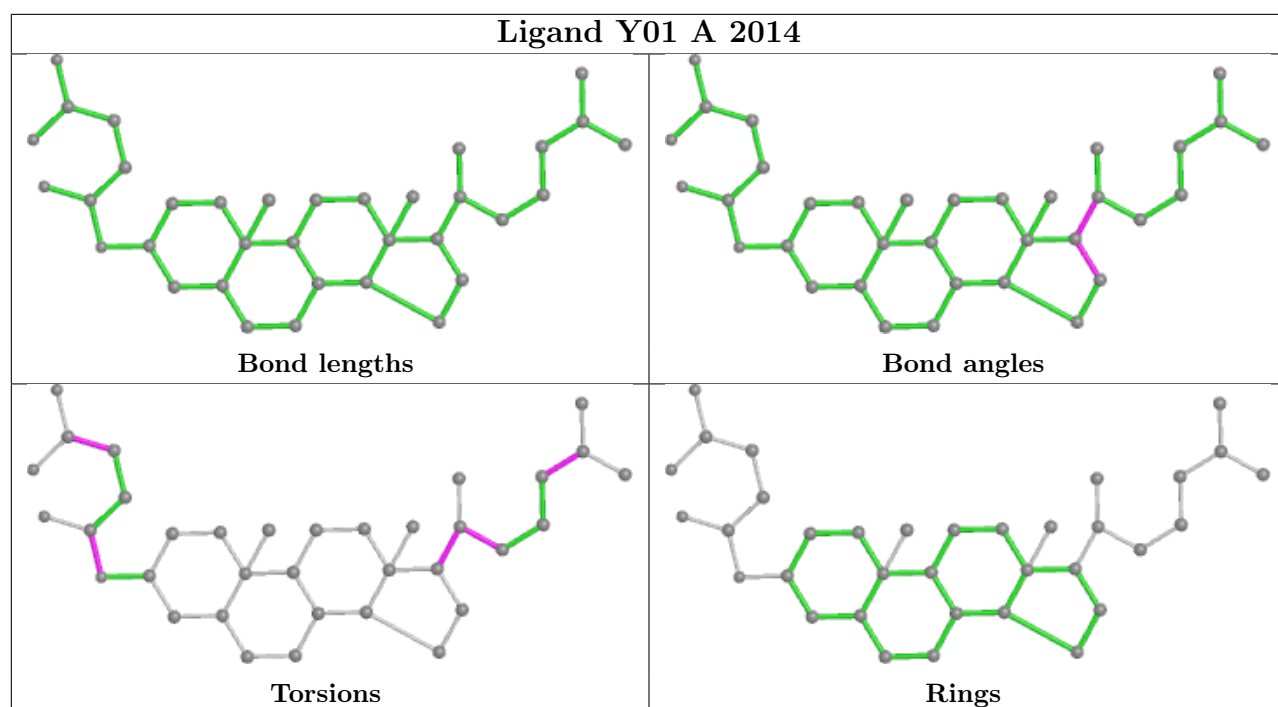
7 monomers are involved in 19 short contacts:

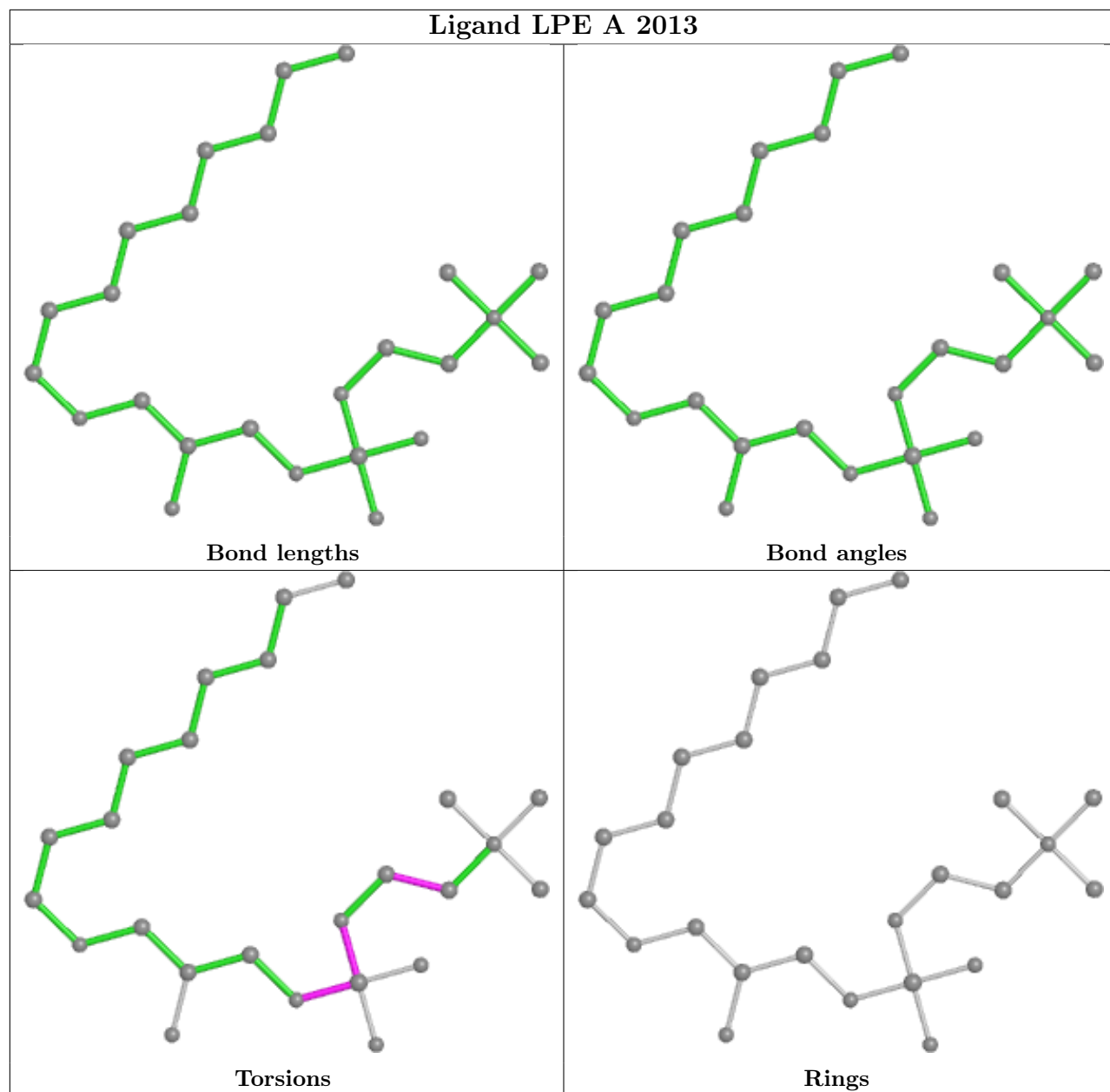
Mol	Chain	Res	Type	Clashes	Symm-Clashes
10	A	2009	P5S	4	0
8	A	2007	LPE	3	0
7	A	2005	Y01	4	0
9	A	2008	PCW	1	0
6	A	2003	657	1	0
5	B	301	NAG	1	0
7	A	2004	Y01	5	0

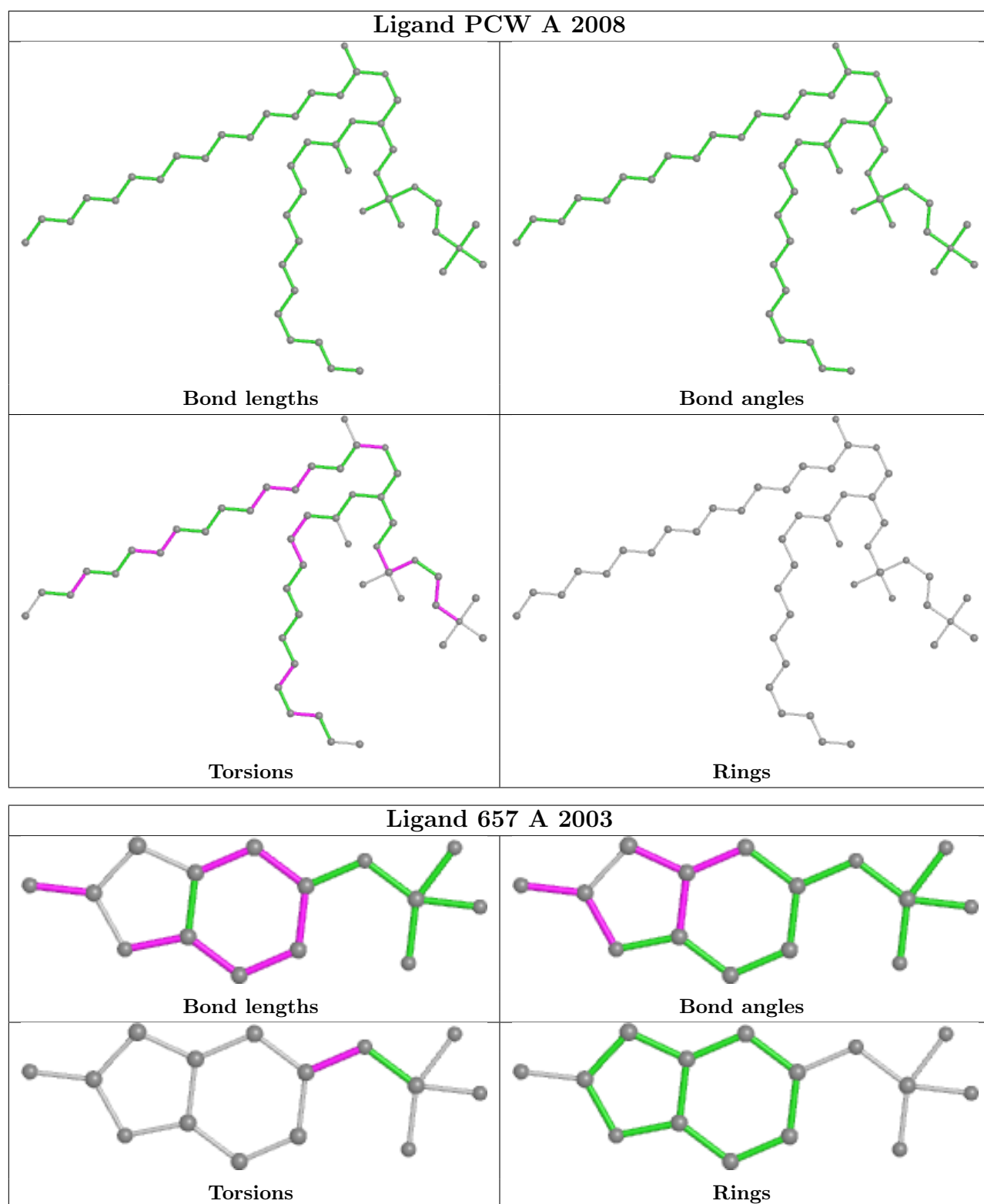
The following is a two-dimensional graphical depiction of Mogul quality analysis of bond lengths, bond angles, torsion angles, and ring geometry for all instances of the Ligand of Interest. In addition, ligands with molecular weight > 250 and outliers as shown on the validation Tables will

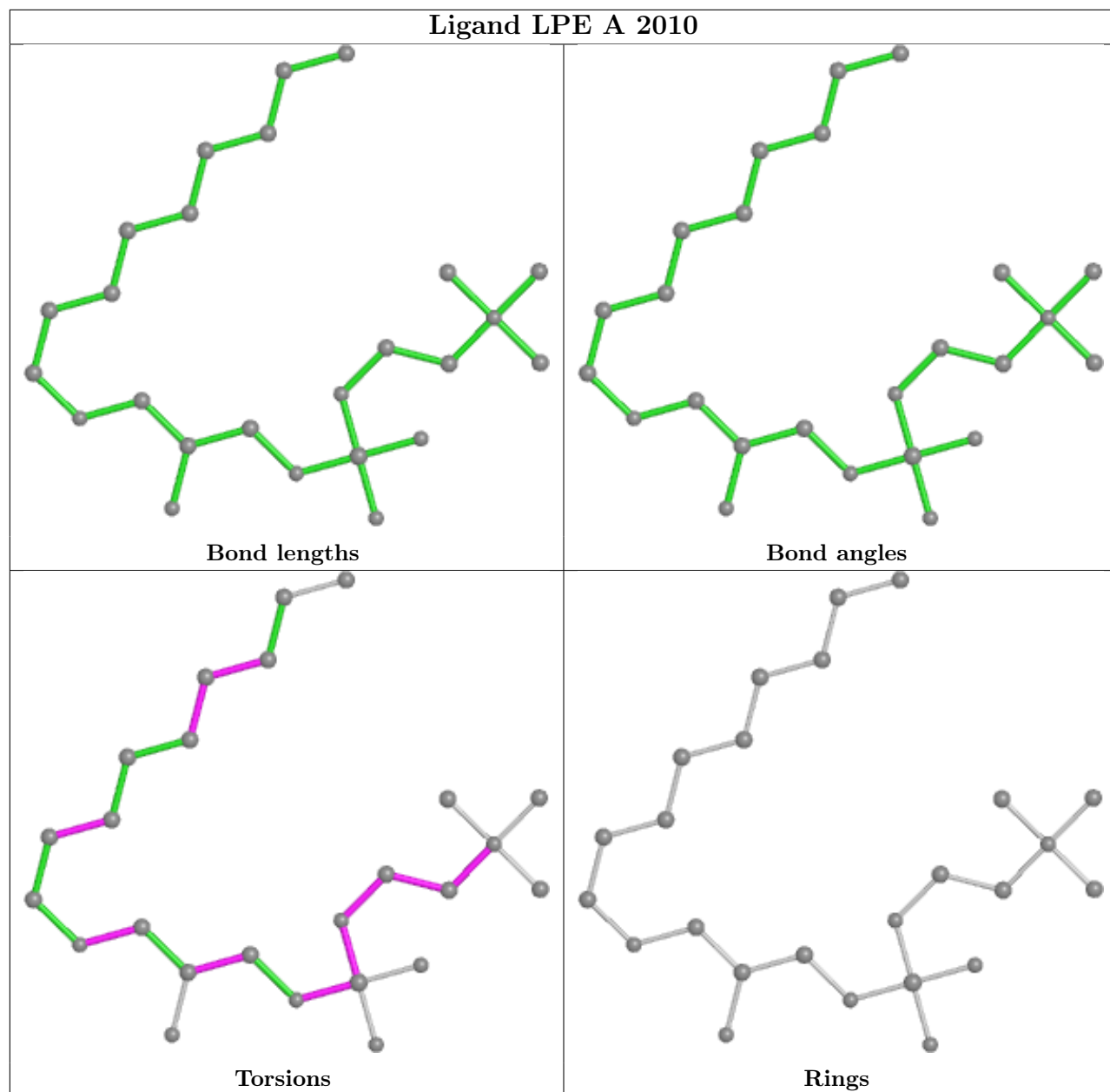
also be included. For torsion angles, if less than 5% of the Mogul distribution of torsion angles is within 10 degrees of the torsion angle in question, then that torsion angle is considered an outlier. Any bond that is central to one or more torsion angles identified as an outlier by Mogul will be highlighted in the graph. For rings, the root-mean-square deviation (RMSD) between the ring in question and similar rings identified by Mogul is calculated over all ring torsion angles. If the average RMSD is greater than 60 degrees and the minimal RMSD between the ring in question and any Mogul-identified rings is also greater than 60 degrees, then that ring is considered an outlier. The outliers are highlighted in purple. The color gray indicates Mogul did not find sufficient equivalents in the CSD to analyse the geometry.

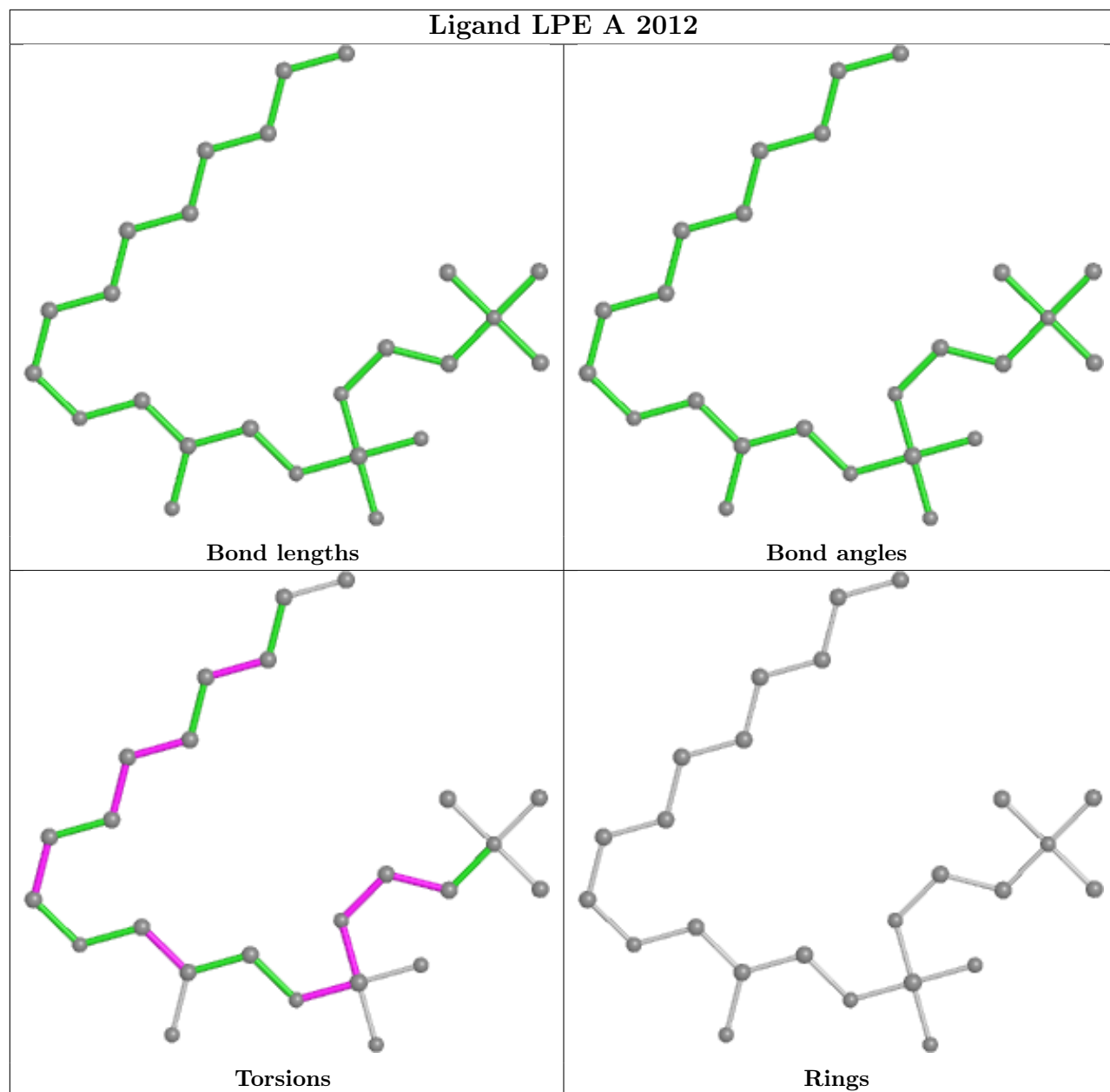


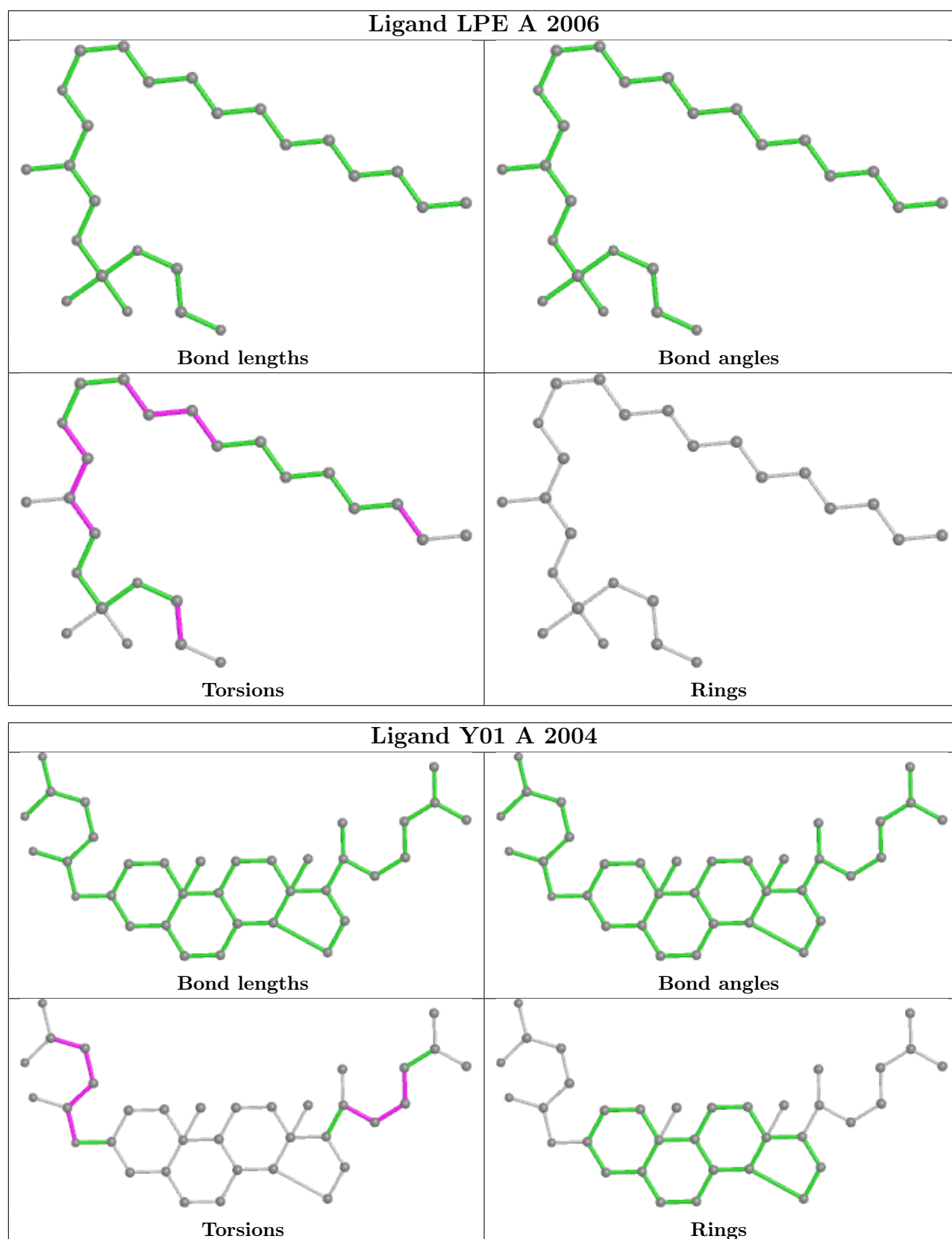


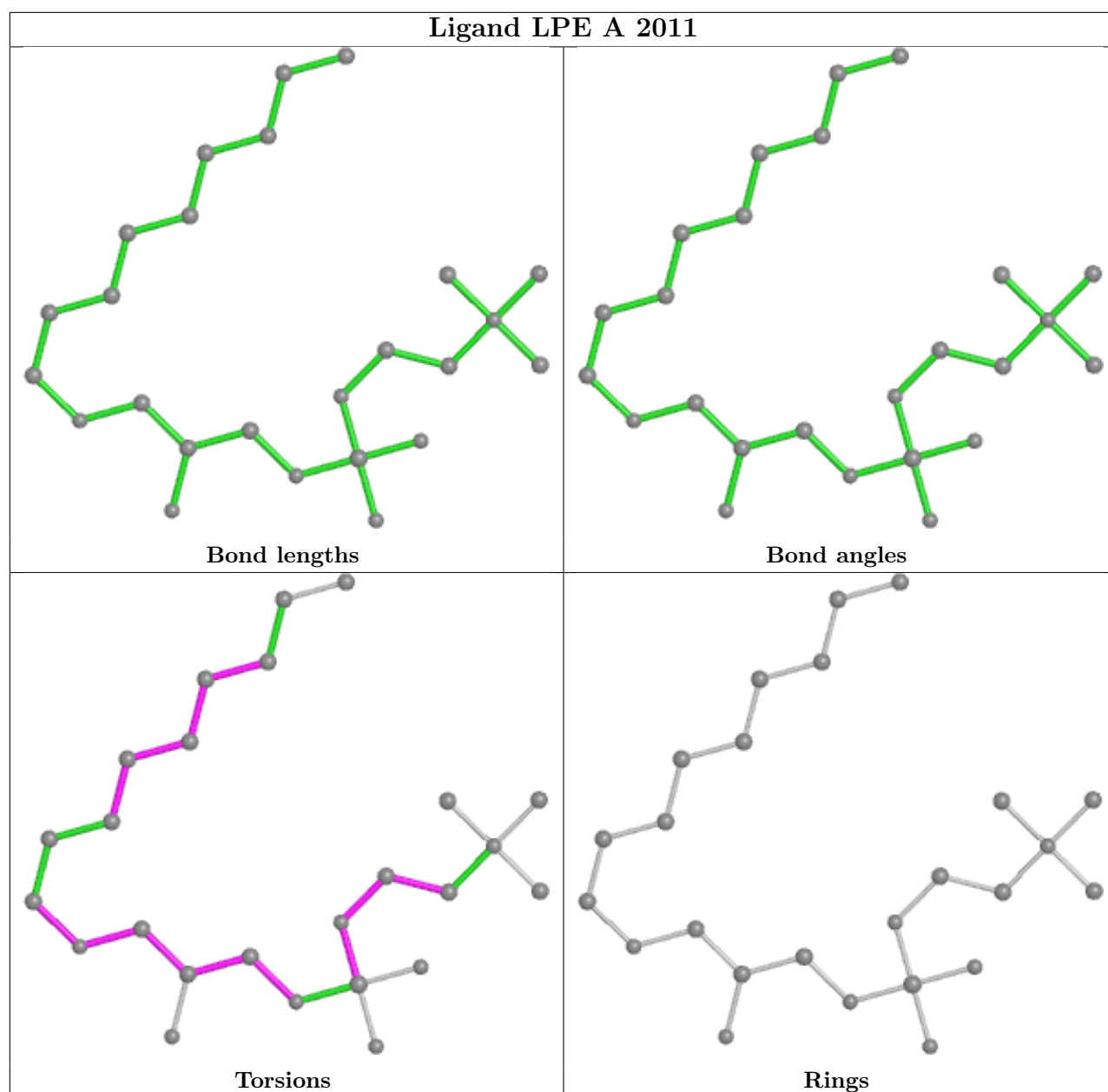












5.7 Other polymers [i](#)

There are no such residues in this entry.

5.8 Polymer linkage issues [i](#)

There are no chain breaks in this entry.

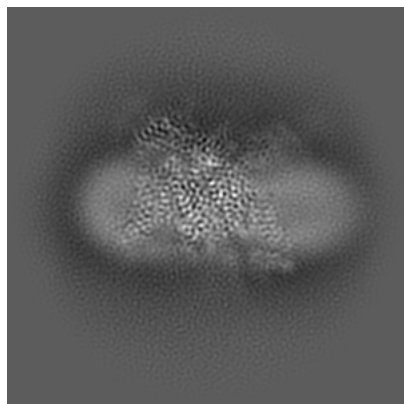
6 Map visualisation [i](#)

This section contains visualisations of the EMDB entry EMD-41261. These allow visual inspection of the internal detail of the map and identification of artifacts.

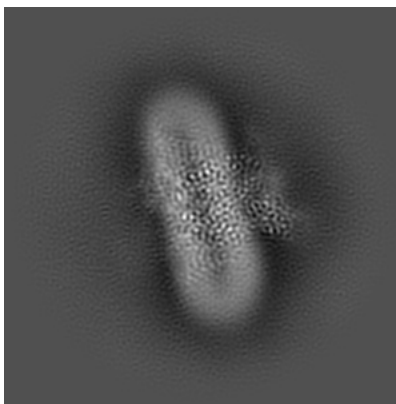
Images derived from a raw map, generated by summing the deposited half-maps, are presented below the corresponding image components of the primary map to allow further visual inspection and comparison with those of the primary map.

6.1 Orthogonal projections [i](#)

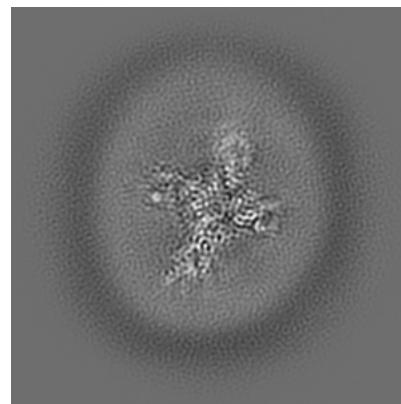
6.1.1 Primary map



X

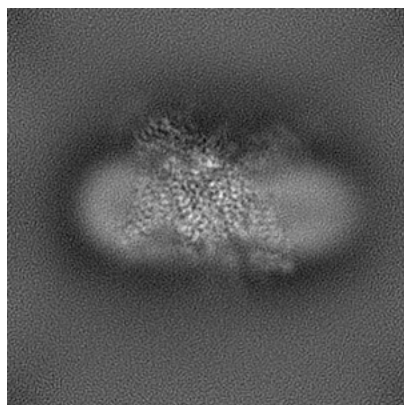


Y

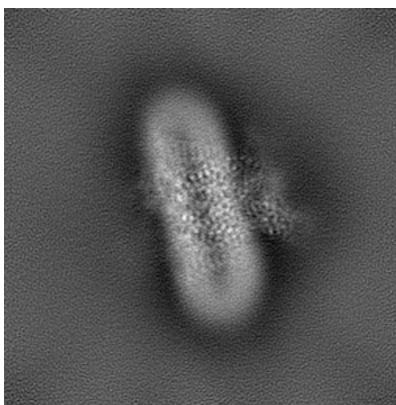


Z

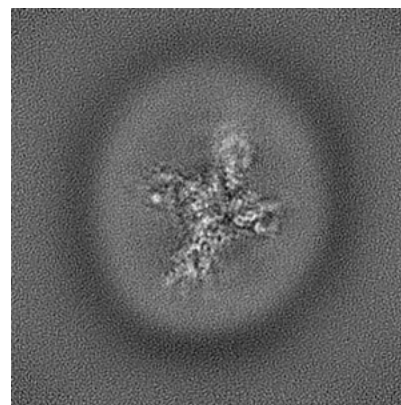
6.1.2 Raw map



X



Y

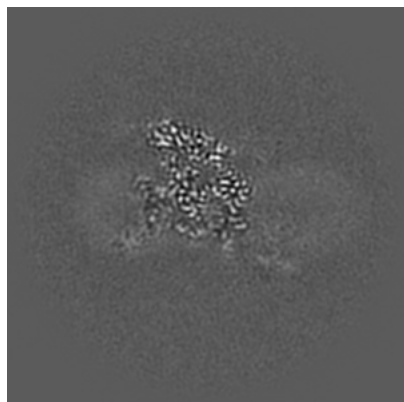


Z

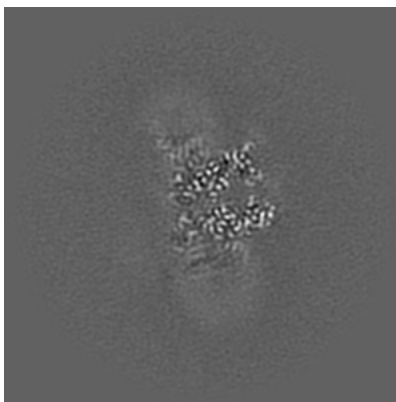
The images above show the map projected in three orthogonal directions.

6.2 Central slices [i](#)

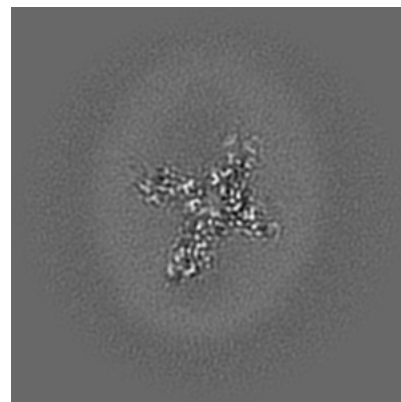
6.2.1 Primary map



X Index: 128

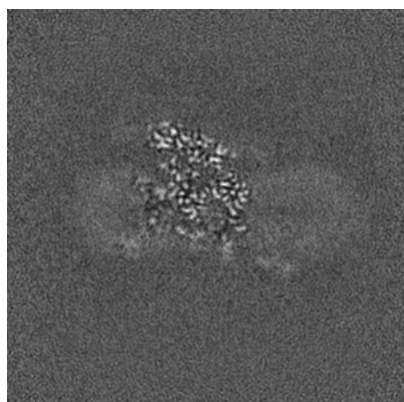


Y Index: 128

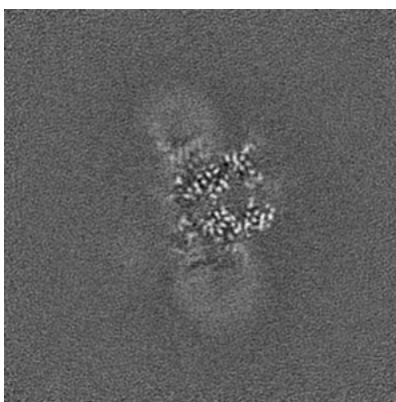


Z Index: 128

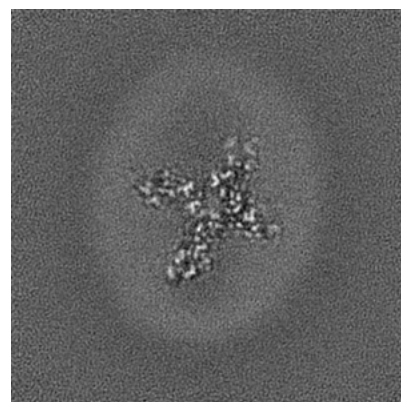
6.2.2 Raw map



X Index: 128



Y Index: 128

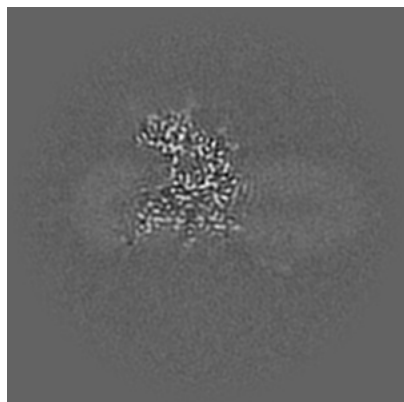


Z Index: 128

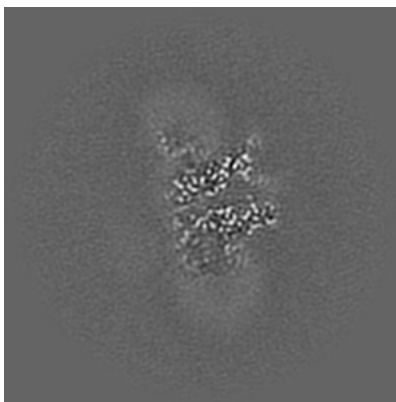
The images above show central slices of the map in three orthogonal directions.

6.3 Largest variance slices [i](#)

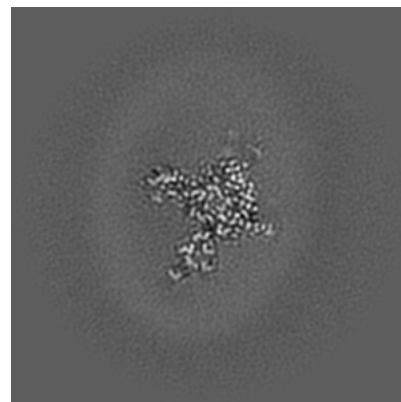
6.3.1 Primary map



X Index: 121

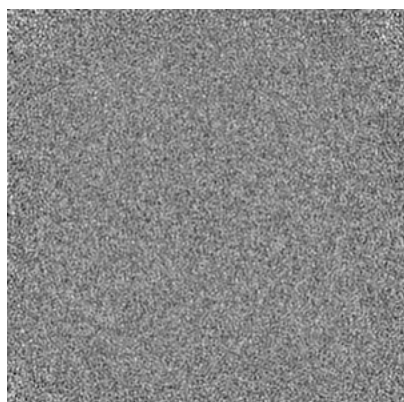


Y Index: 130

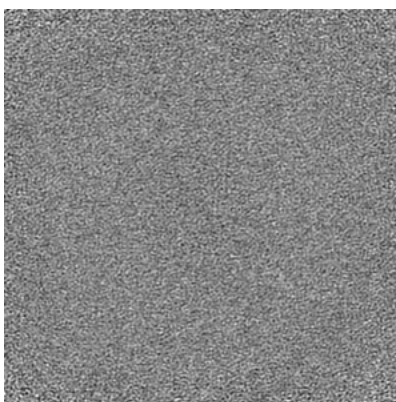


Z Index: 135

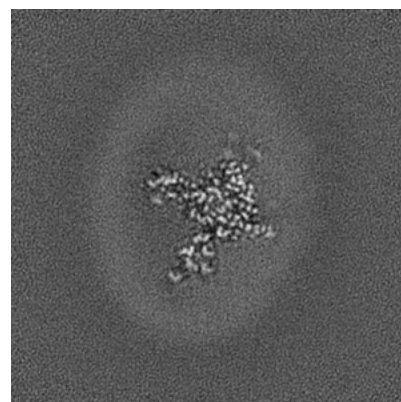
6.3.2 Raw map



X Index: 0



Y Index: 0

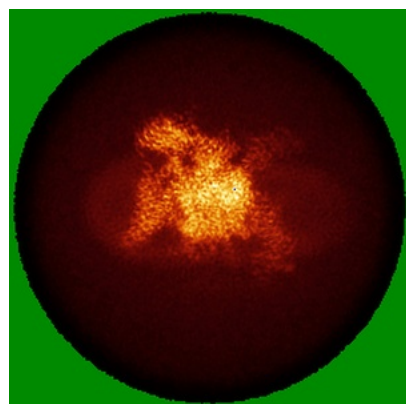


Z Index: 135

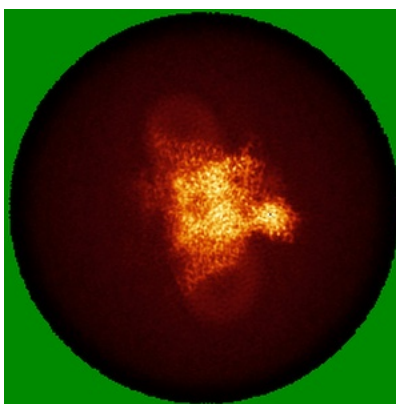
The images above show the largest variance slices of the map in three orthogonal directions.

6.4 Orthogonal standard-deviation projections (False-color) [i](#)

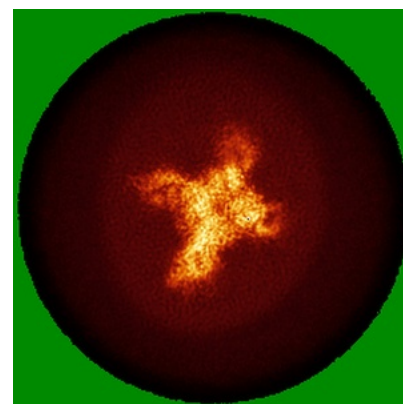
6.4.1 Primary map



X

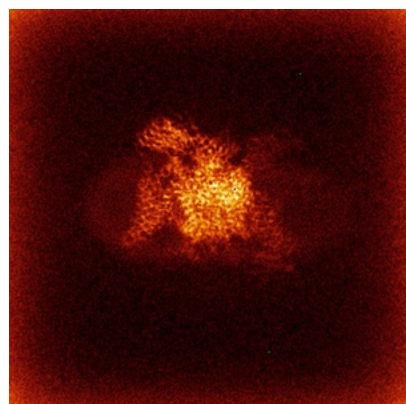


Y

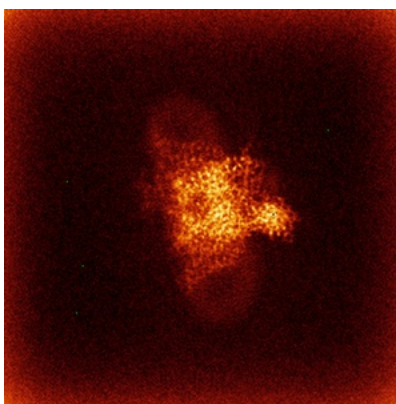


Z

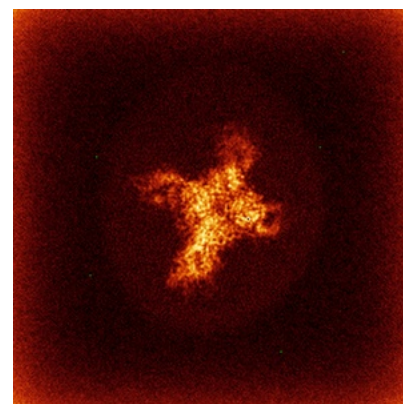
6.4.2 Raw map



X



Y



Z

The images above show the map standard deviation projections with false color in three orthogonal directions. Minimum values are shown in green, max in blue, and dark to light orange shades represent small to large values respectively.

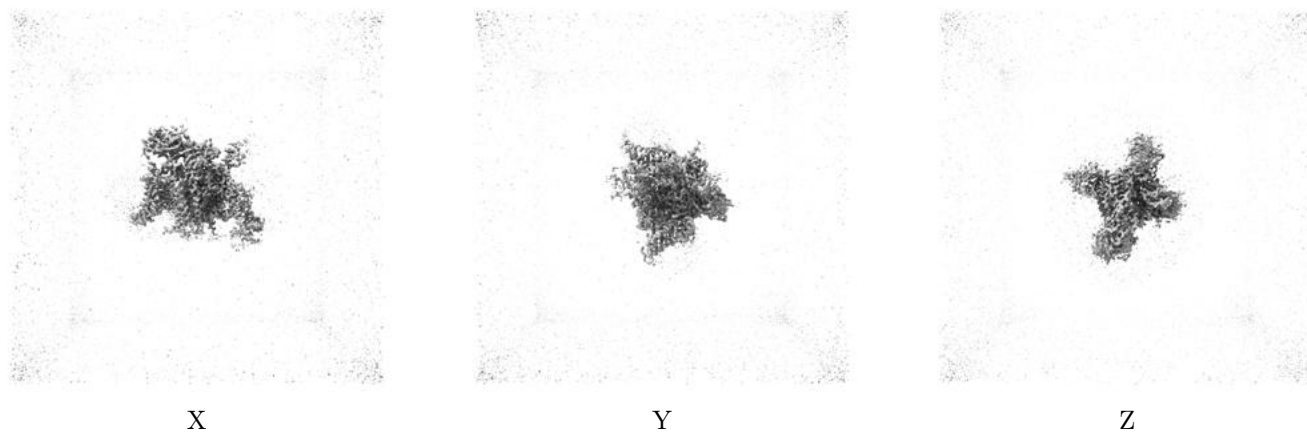
6.5 Orthogonal surface views [i](#)

6.5.1 Primary map



The images above show the 3D surface view of the map at the recommended contour level 0.15. These images, in conjunction with the slice images, may facilitate assessment of whether an appropriate contour level has been provided.

6.5.2 Raw map



These images show the 3D surface of the raw map. The raw map's contour level was selected so that its surface encloses the same volume as the primary map does at its recommended contour level.

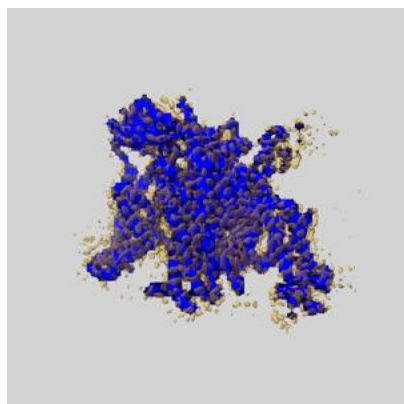
6.6 Mask visualisation [i](#)

This section shows the 3D surface view of the primary map at 50% transparency overlaid with the specified mask at 0% transparency

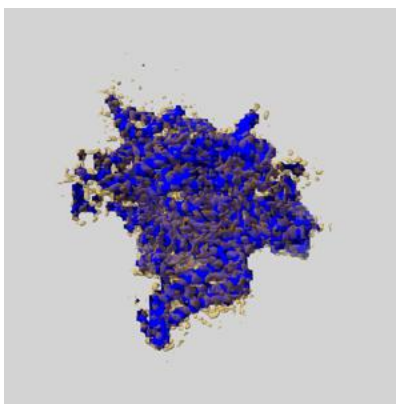
A mask typically either:

- Encompasses the whole structure
- Separates out a domain, a functional unit, a monomer or an area of interest from a larger structure

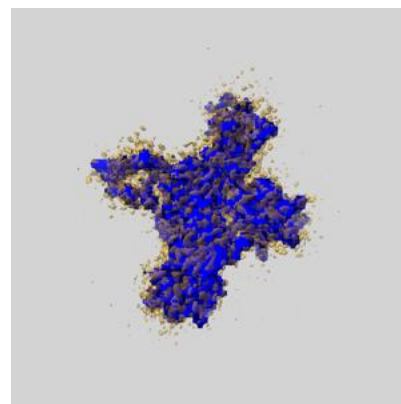
6.6.1 emd_41261_msk_1.map [i](#)



X



Y

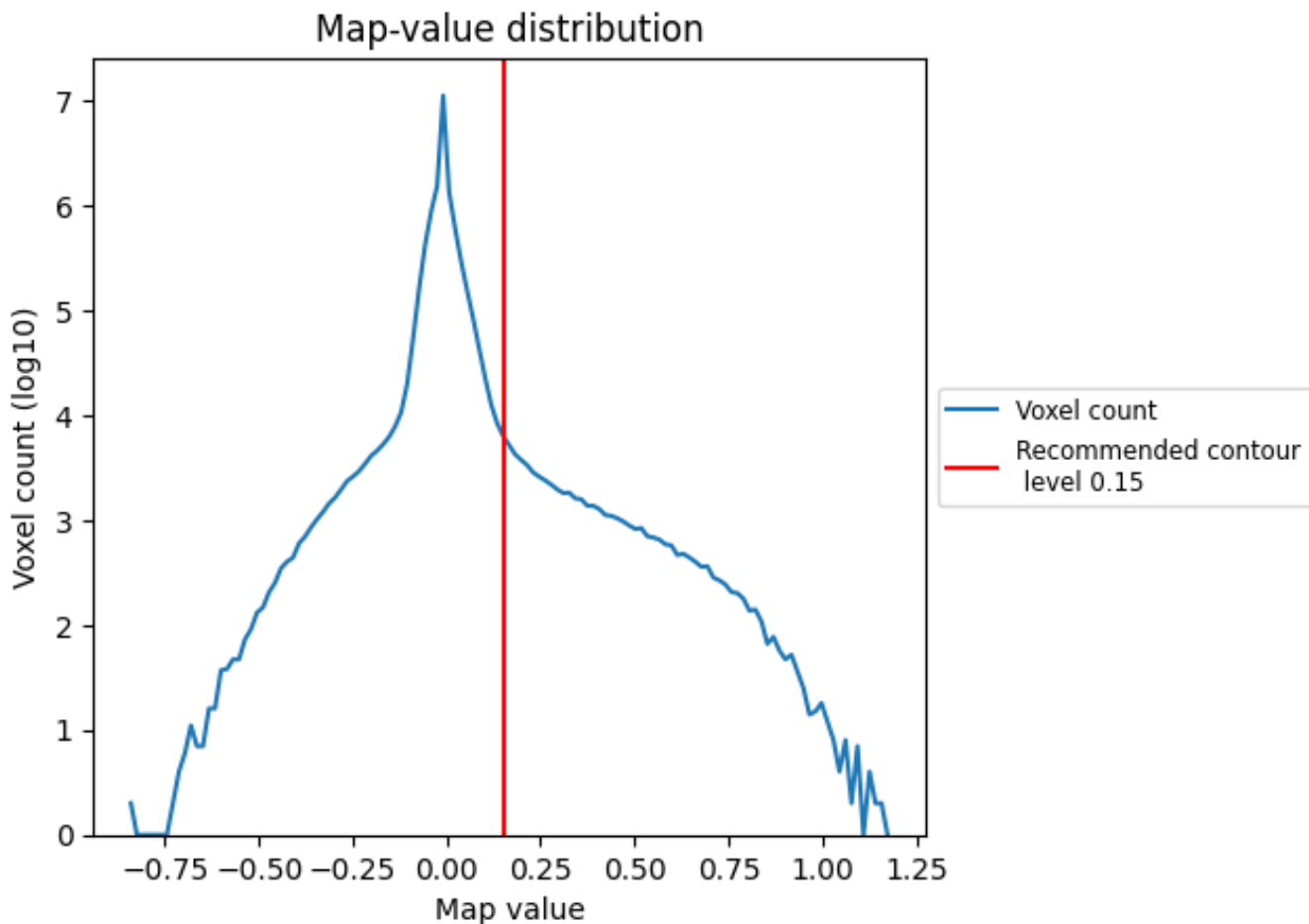


Z

7 Map analysis [i](#)

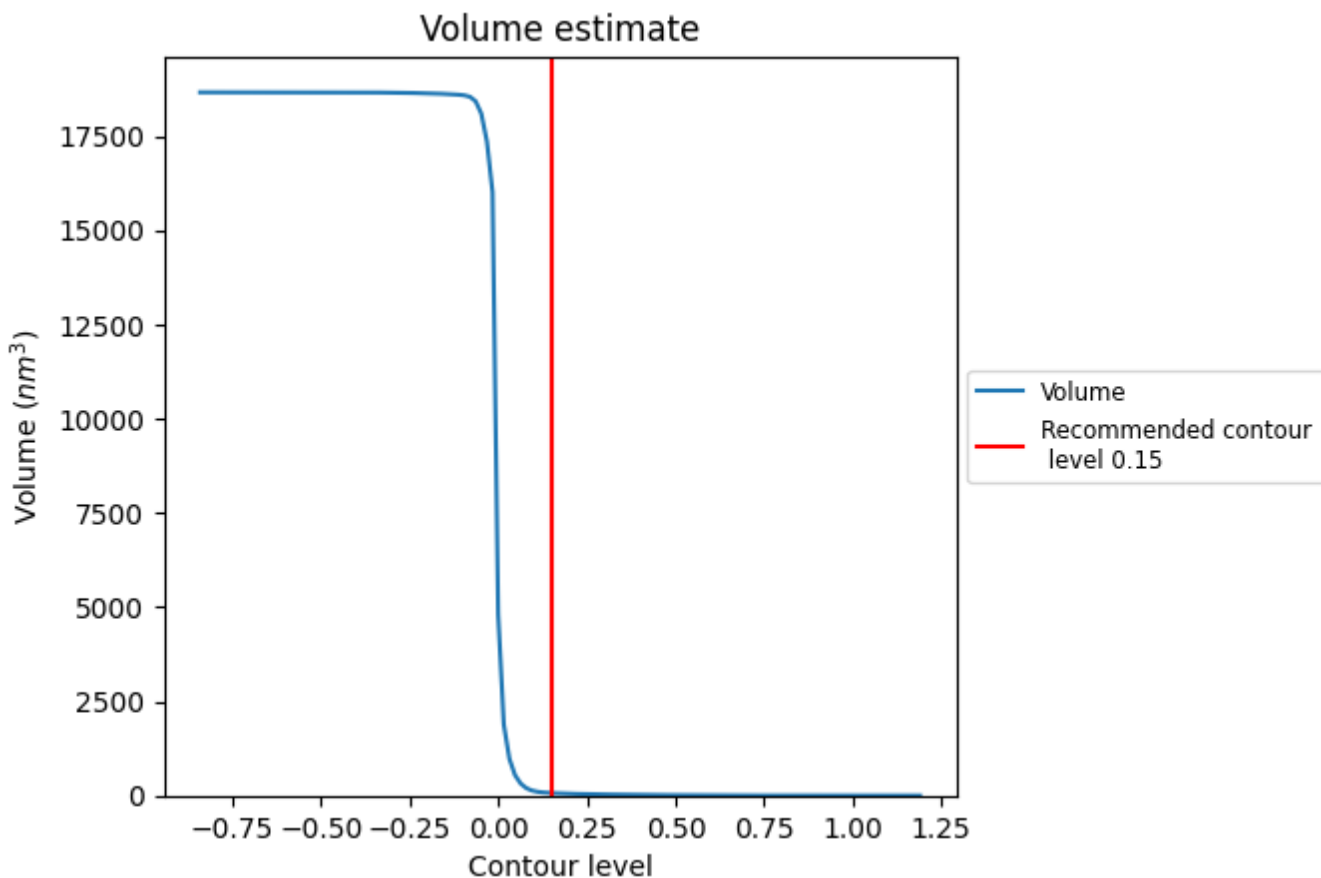
This section contains the results of statistical analysis of the map.

7.1 Map-value distribution [i](#)



The map-value distribution is plotted in 128 intervals along the x-axis. The y-axis is logarithmic. A spike in this graph at zero usually indicates that the volume has been masked.

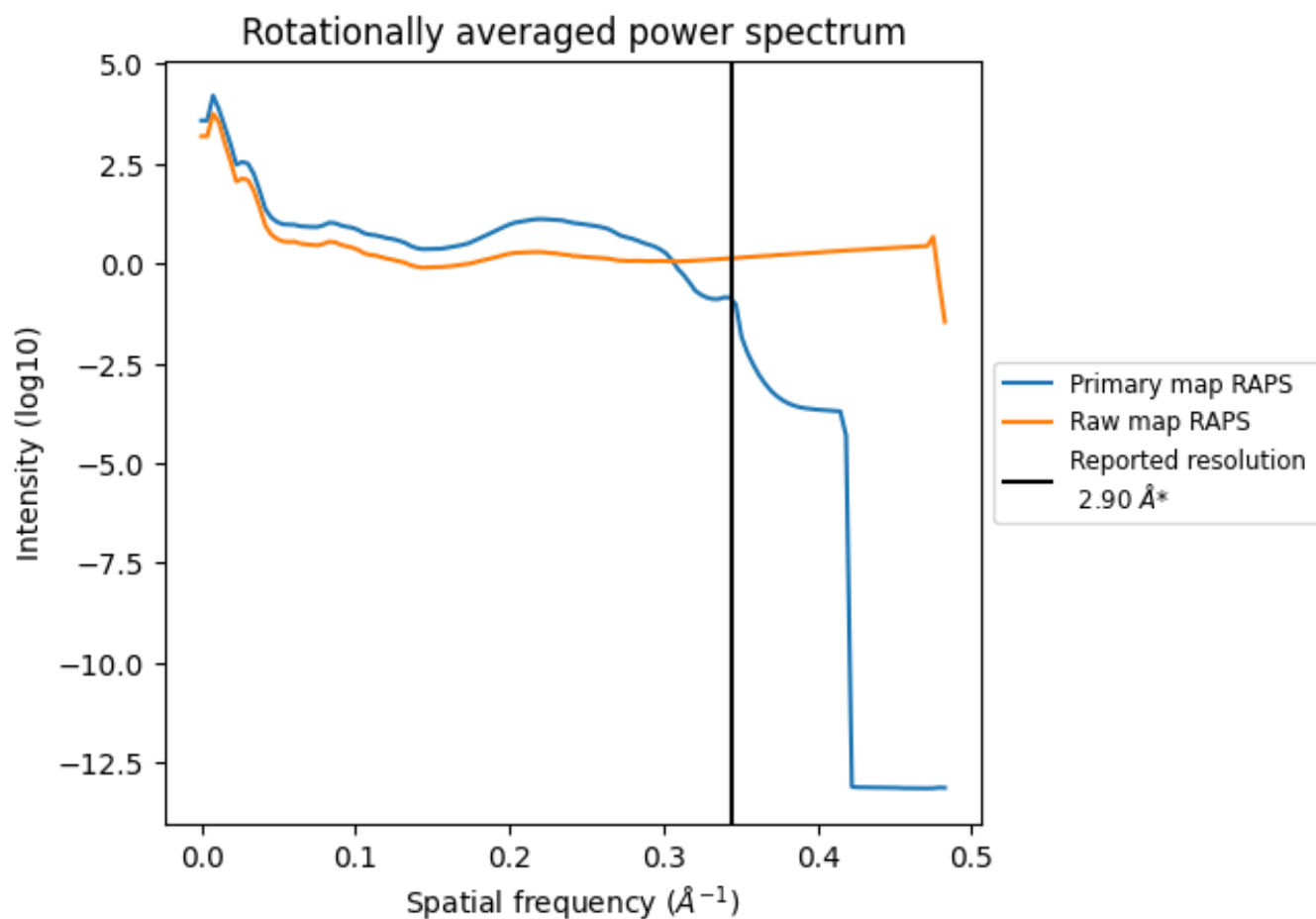
7.2 Volume estimate [i](#)



The volume at the recommended contour level is 67 nm³; this corresponds to an approximate mass of 61 kDa.

The volume estimate graph shows how the enclosed volume varies with the contour level. The recommended contour level is shown as a vertical line and the intersection between the line and the curve gives the volume of the enclosed surface at the given level.

7.3 Rotationally averaged power spectrum [i](#)

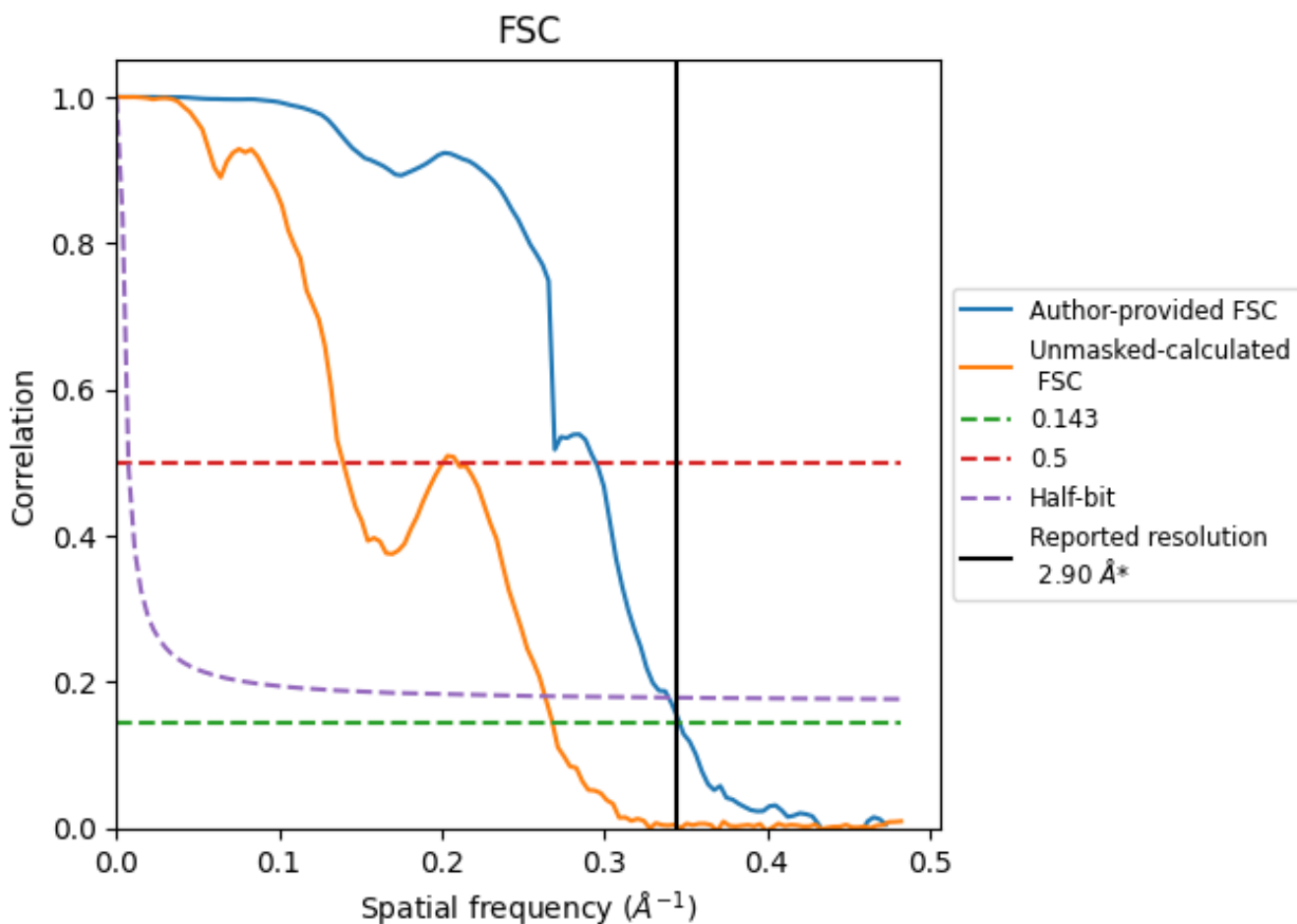


*Reported resolution corresponds to spatial frequency of 0.345 Å⁻¹

8 Fourier-Shell correlation [i](#)

Fourier-Shell Correlation (FSC) is the most commonly used method to estimate the resolution of single-particle and subtomogram-averaged maps. The shape of the curve depends on the imposed symmetry, mask and whether or not the two 3D reconstructions used were processed from a common reference. The reported resolution is shown as a black line. A curve is displayed for the half-bit criterion in addition to lines showing the 0.143 gold standard cut-off and 0.5 cut-off.

8.1 FSC [i](#)



*Reported resolution corresponds to spatial frequency of 0.345 Å⁻¹

8.2 Resolution estimates [i](#)

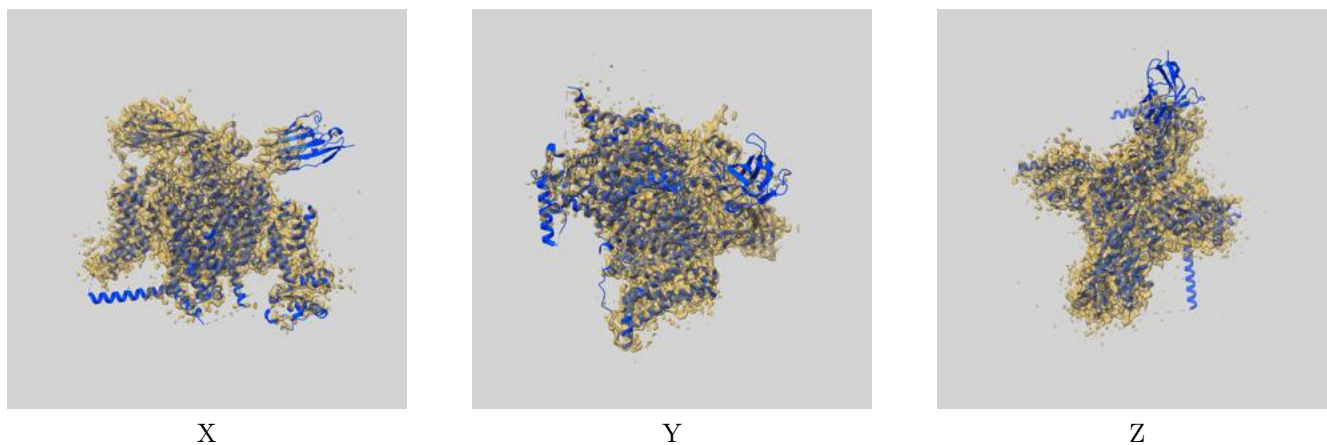
Resolution estimate (Å)	Estimation criterion (FSC cut-off)		
	0.143	0.5	Half-bit
Reported by author	2.90	-	-
Author-provided FSC curve	2.89	3.39	2.94
Unmasked-calculated*	3.73	7.17	3.79

*Resolution estimate based on FSC curve calculated by comparison of deposited half-maps. The value from deposited half-maps intersecting FSC 0.143 CUT-OFF 3.73 differs from the reported value 2.9 by more than 10 %

9 Map-model fit [i](#)

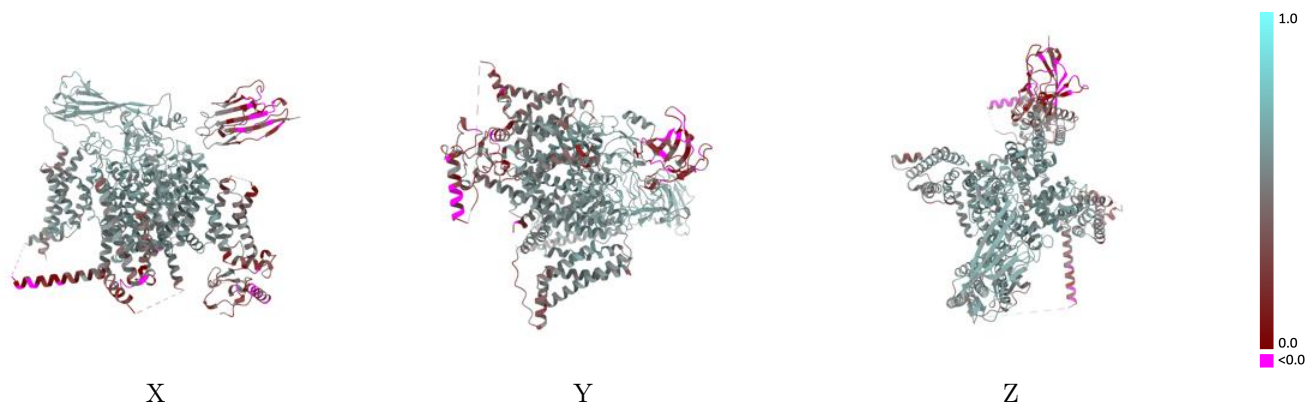
This section contains information regarding the fit between EMDB map EMD-41261 and PDB model 8THG. Per-residue inclusion information can be found in section [3](#) on page [9](#).

9.1 Map-model overlay [i](#)



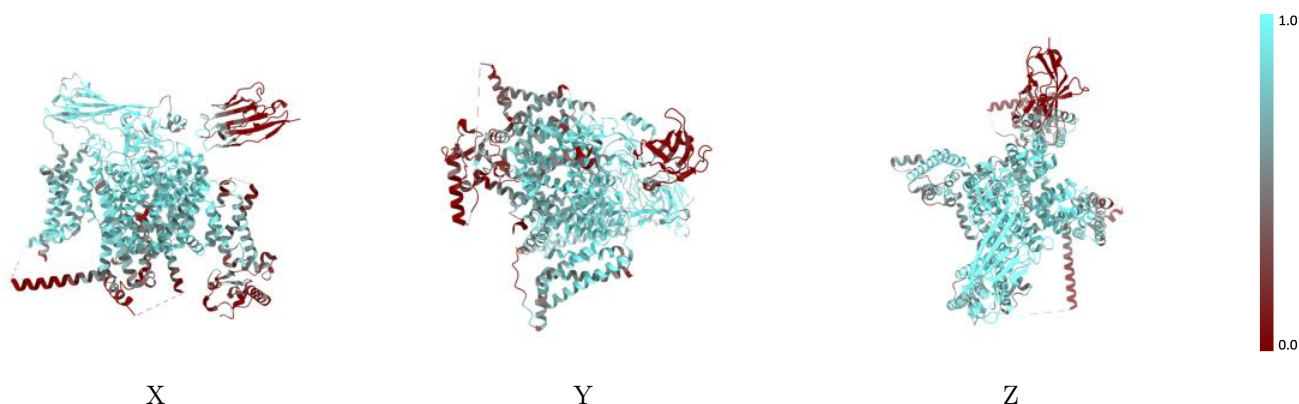
The images above show the 3D surface view of the map at the recommended contour level 0.15 at 50% transparency in yellow overlaid with a ribbon representation of the model coloured in blue. These images allow for the visual assessment of the quality of fit between the atomic model and the map.

9.2 Q-score mapped to coordinate model [\(i\)](#)



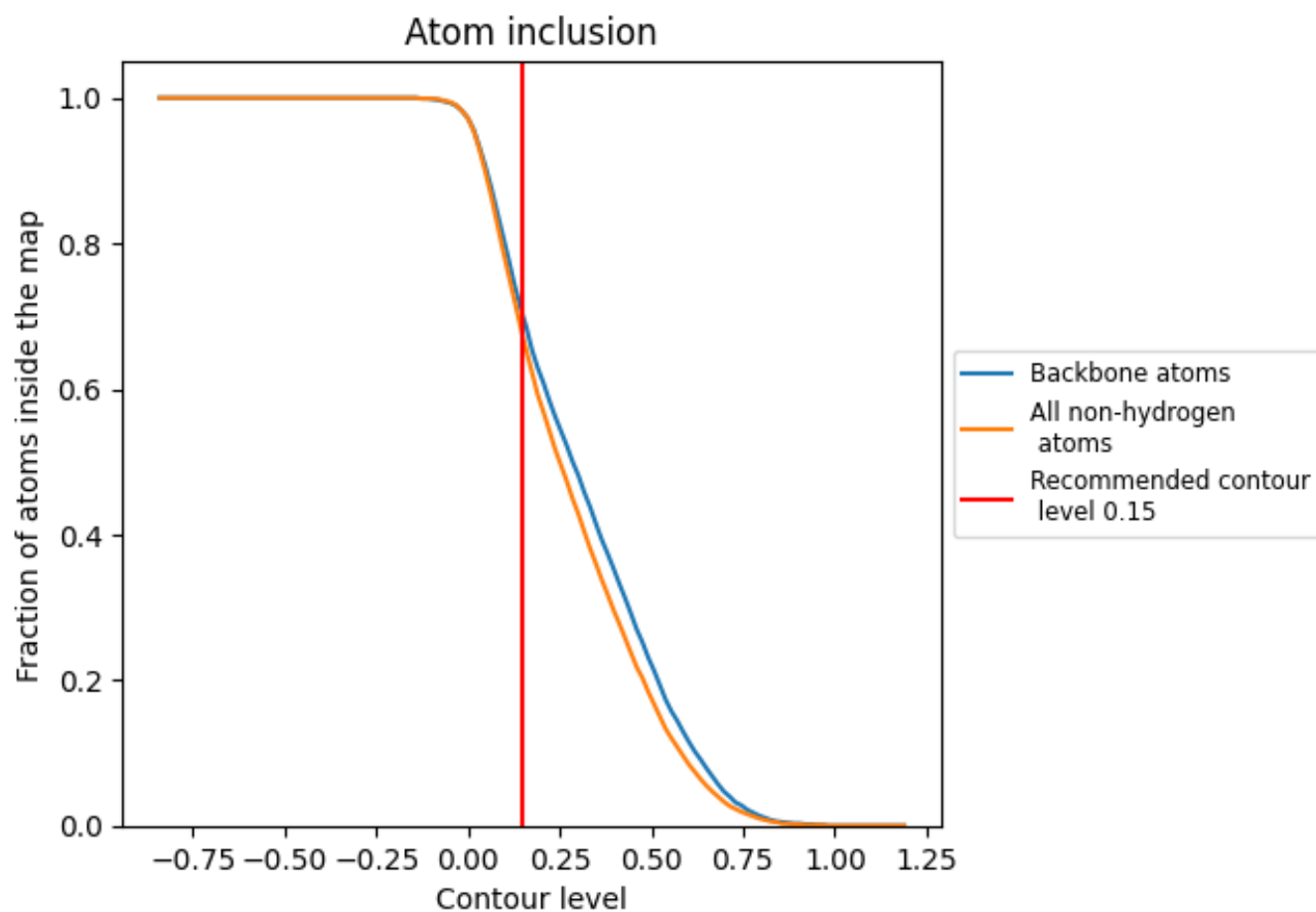
The images above show the model with each residue coloured according to its Q-score. This shows their resolvability in the map with higher Q-score values reflecting better resolvability. Please note: Q-score is calculating the resolvability of atoms, and thus high values are only expected at resolutions at which atoms can be resolved. Low Q-score values may therefore be expected for many entries.

9.3 Atom inclusion mapped to coordinate model [\(i\)](#)



The images above show the model with each residue coloured according to its atom inclusion. This shows to what extent they are inside the map at the recommended contour level (0.15).















9.4 Atom inclusion [i](#)



At the recommended contour level, 70% of all backbone atoms, 67% of all non-hydrogen atoms, are inside the map.

9.5 Map-model fit summary

The table lists the average atom inclusion at the recommended contour level (0.15) and Q-score for the entire model and for each chain.

Chain	Atom inclusion	Q-score
All	 0.6710	 0.4830
A	 0.6970	 0.4970
B	 0.8030	 0.5540
C	 0.1960	 0.2350
D	 0.5360	 0.3260
E	 0.6430	 0.4520
F	 0.8210	 0.5630

