



# Full wwPDB X-ray Structure Validation Report ⓘ

Aug 15, 2023 – 10:26 PM EDT

PDB ID : 1TJ1  
Title : Crystal structure of E. coli PutA proline dehydrogenase domain (residues 86-669) complexed with L-lactate  
Authors : Tanner, J.J.; Zhang, M.; White, T.A.; Schuermann, J.P.; Baban, B.A.; Becker, D.F.  
Deposited on : 2004-06-03  
Resolution : 2.00 Å(reported)

This is a Full wwPDB X-ray Structure Validation Report for a publicly released PDB entry.

We welcome your comments at [validation@mail.wwpdb.org](mailto:validation@mail.wwpdb.org)

A user guide is available at

<https://www.wwpdb.org/validation/2017/XrayValidationReportHelp>

with specific help available everywhere you see the ⓘ symbol.

The types of validation reports are described at

<http://www.wwpdb.org/validation/2017/FAQs#types>.

---

The following versions of software and data (see [references ⓘ](#)) were used in the production of this report:

MolProbity : 4.02b-467  
Mogul : 1.8.5 (274361), CSD as541be (2020)  
Xtriage (Phenix) : 1.13  
EDS : 2.35  
buster-report : 1.1.7 (2018)  
Percentile statistics : 20191225.v01 (using entries in the PDB archive December 25th 2019)  
Refmac : 5.8.0158  
CCP4 : 7.0.044 (Gargrove)  
Ideal geometry (proteins) : Engh & Huber (2001)  
Ideal geometry (DNA, RNA) : Parkinson et al. (1996)  
Validation Pipeline (wwPDB-VP) : 2.35

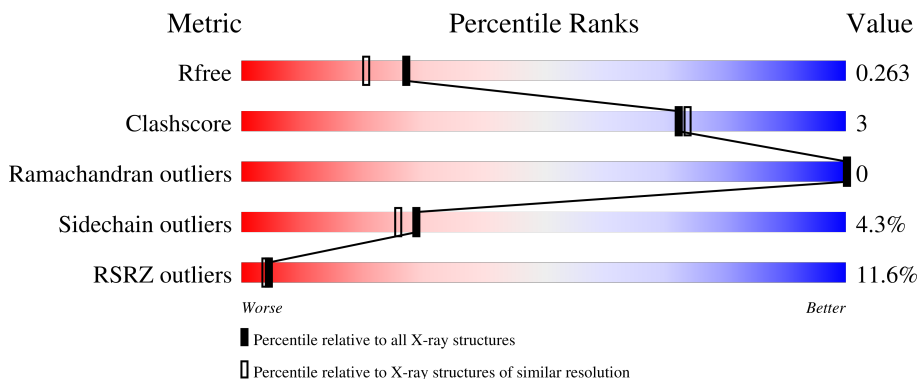
# 1 Overall quality at a glance

The following experimental techniques were used to determine the structure:

*X-RAY DIFFRACTION*

The reported resolution of this entry is 2.00 Å.

Percentile scores (ranging between 0-100) for global validation metrics of the entry are shown in the following graphic. The table shows the number of entries on which the scores are based.



Metric	Whole archive (#Entries)	Similar resolution (#Entries, resolution range(Å))
$R_{free}$	130704	8085 (2.00-2.00)
Clashscore	141614	9178 (2.00-2.00)
Ramachandran outliers	138981	9054 (2.00-2.00)
Sidechain outliers	138945	9053 (2.00-2.00)
RSRZ outliers	127900	7900 (2.00-2.00)

The table below summarises the geometric issues observed across the polymeric chains and their fit to the electron density. The red, orange, yellow and green segments of the lower bar indicate the fraction of residues that contain outliers for  $\geq 3$ , 2, 1 and 0 types of geometric quality criteria respectively. A grey segment represents the fraction of residues that are not modelled. The numeric value for each fraction is indicated below the corresponding segment, with a dot representing fractions  $\leq 5\%$ . The upper red bar (where present) indicates the fraction of residues that have poor fit to the electron density. The numeric value is given above the bar.

Mol	Chain	Length	Quality of chain
1	A	602	

The following table lists non-polymeric compounds, carbohydrate monomers and non-standard residues in protein, DNA, RNA chains that are outliers for geometric or electron-density-fit criteria:

Mol	Type	Chain	Res	Chirality	Geometry	Clashes	Electron density
2	FAD	A	2001	X	-	-	-

## 2 Entry composition i

There are 4 unique types of molecules in this entry. The entry contains 3727 atoms, of which 0 are hydrogens and 0 are deuteriums.

In the tables below, the ZeroOcc column contains the number of atoms modelled with zero occupancy, the AltConf column contains the number of residues with at least one atom in alternate conformation and the Trace column contains the number of residues modelled with at most 2 atoms.

- Molecule 1 is a protein called Bifunctional putA protein.

Mol	Chain	Residues	Atoms					ZeroOcc	AltConf	Trace
			Total	C	N	O	S			
1	A	450	3474	2206	611	640	17	0	0	0

There are 18 discrepancies between the modelled and reference sequences:

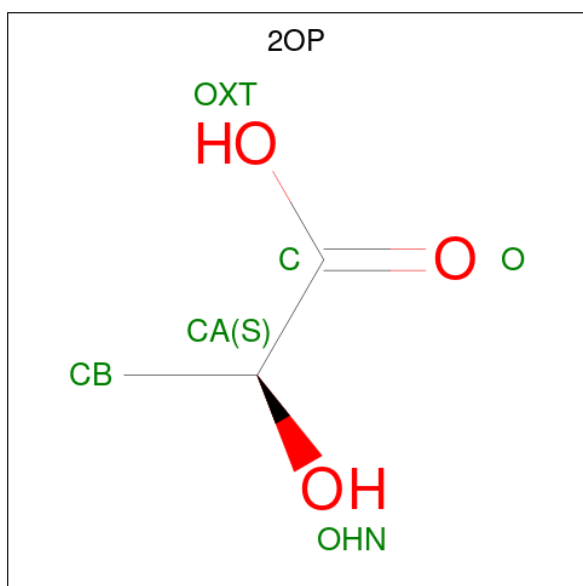
Chain	Residue	Modelled	Actual	Comment	Reference
A	670	SER	-	expression tag	UNP P09546
A	671	SER	-	expression tag	UNP P09546
A	672	SER	-	expression tag	UNP P09546
A	673	VAL	-	expression tag	UNP P09546
A	674	ASP	-	expression tag	UNP P09546
A	675	LYS	-	expression tag	UNP P09546
A	676	LEU	-	expression tag	UNP P09546
A	677	ALA	-	expression tag	UNP P09546
A	678	ALA	-	expression tag	UNP P09546
A	679	ALA	-	expression tag	UNP P09546
A	680	LEU	-	expression tag	UNP P09546
A	681	GLU	-	expression tag	UNP P09546
A	682	HIS	-	expression tag	UNP P09546
A	683	HIS	-	expression tag	UNP P09546
A	684	HIS	-	expression tag	UNP P09546
A	685	HIS	-	expression tag	UNP P09546
A	686	HIS	-	expression tag	UNP P09546
A	687	HIS	-	expression tag	UNP P09546

- Molecule 2 is FLAVIN-ADENINE DINUCLEOTIDE (three-letter code: FAD) (formula:  $C_{27}H_{33}N_9O_{15}P_2$ ).



Mol	Chain	Residues	Atoms					ZeroOcc	AltConf
			Total	C	N	O	P		
2	A	1	53	27	9	15	2	0	0

- Molecule 3 is (2S)-2-HYDROXYPROPANOIC ACID (three-letter code: 2OP) (formula:  $C_3H_6O_3$ ).



Mol	Chain	Residues	Atoms			ZeroOcc	AltConf
			Total	C	O		
3	A	1	6	3	3	0	0

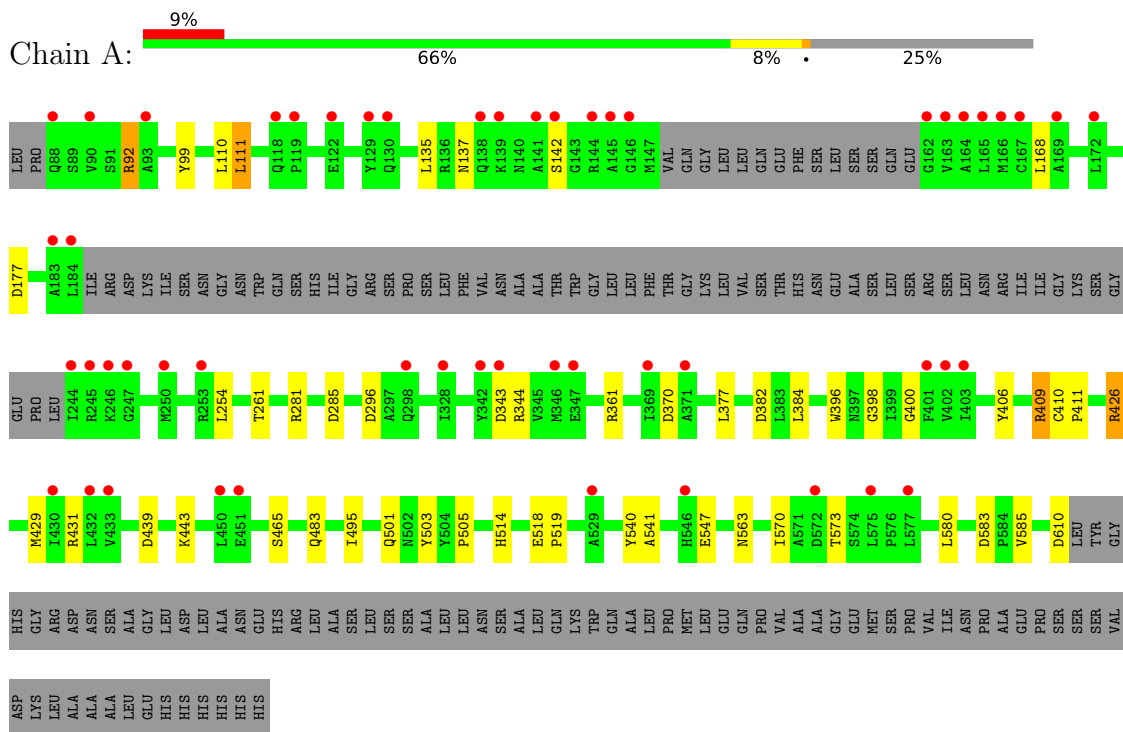
- Molecule 4 is water.

Mol	Chain	Residues	Atoms		ZeroOcc	AltConf
4	A	194	Total 194	O 194	0	0

### 3 Residue-property plots [\*i\*](#)

These plots are drawn for all protein, RNA, DNA and oligosaccharide chains in the entry. The first graphic for a chain summarises the proportions of the various outlier classes displayed in the second graphic. The second graphic shows the sequence view annotated by issues in geometry and electron density. Residues are color-coded according to the number of geometric quality criteria for which they contain at least one outlier: green = 0, yellow = 1, orange = 2 and red = 3 or more. A red dot above a residue indicates a poor fit to the electron density (RSRZ > 2). Stretches of 2 or more consecutive residues without any outlier are shown as a green connector. Residues present in the sample, but not in the model, are shown in grey.

- Molecule 1: Bifunctional putA protein



## 4 Data and refinement statistics i

Property	Value	Source
Space group	I 2 2 2	Depositor
Cell constants a, b, c, $\alpha$ , $\beta$ , $\gamma$	72.81Å 141.12Å 146.01Å 90.00° 90.00° 90.00°	Depositor
Resolution (Å)	40.49 – 2.00 40.46 – 2.00	Depositor EDS
% Data completeness (in resolution range)	98.0 (40.49-2.00) 97.8 (40.46-2.00)	Depositor EDS
$R_{merge}$	0.08	Depositor
$R_{sym}$	0.08	Depositor
$\langle I/\sigma(I) \rangle$ <sup>1</sup>	2.04 (at 2.00Å)	Xtrriage
Refinement program	REFMAC 5.1.24	Depositor
R, $R_{free}$	0.214 , 0.255 0.221 , 0.263	Depositor DCC
$R_{free}$ test set	2492 reflections (4.98%)	wwPDB-VP
Wilson B-factor (Å <sup>2</sup> )	30.3	Xtrriage
Anisotropy	0.798	Xtrriage
Bulk solvent $k_{sol}$ (e/Å <sup>3</sup> ), $B_{sol}$ (Å <sup>2</sup> )	0.37 , 55.8	EDS
L-test for twinning <sup>2</sup>	$\langle  L  \rangle = 0.50$ , $\langle L^2 \rangle = 0.33$	Xtrriage
Estimated twinning fraction	0.011 for -h,-l,-k	Xtrriage
$F_o, F_c$ correlation	0.94	EDS
Total number of atoms	3727	wwPDB-VP
Average B, all atoms (Å <sup>2</sup> )	32.0	wwPDB-VP

Xtrriage's analysis on translational NCS is as follows: *The largest off-origin peak in the Patterson function is 5.58% of the height of the origin peak. No significant pseudotranslation is detected.*

<sup>1</sup>Intensities estimated from amplitudes.

<sup>2</sup>Theoretical values of  $\langle |L| \rangle$ ,  $\langle L^2 \rangle$  for acentric reflections are 0.5, 0.333 respectively for untwinned datasets, and 0.375, 0.2 for perfectly twinned datasets.



## 5 Model quality [i](#)

### 5.1 Standard geometry [i](#)

Bond lengths and bond angles in the following residue types are not validated in this section: FAD, 2OP

The Z score for a bond length (or angle) is the number of standard deviations the observed value is removed from the expected value. A bond length (or angle) with  $|Z| > 5$  is considered an outlier worth inspection. RMSZ is the root-mean-square of all Z scores of the bond lengths (or angles).

Mol	Chain	Bond lengths		Bond angles	
		RMSZ	# Z  >5	RMSZ	# Z  >5
1	A	0.65	0/3538	0.83	12/4793 (0.3%)

There are no bond length outliers.

All (12) bond angle outliers are listed below:

Mol	Chain	Res	Type	Atoms	Z	Observed(°)	Ideal(°)
1	A	370	ASP	CB-CG-OD2	9.11	126.50	118.30
1	A	281	ARG	NE-CZ-NH2	-8.48	116.06	120.30
1	A	409	ARG	NE-CZ-NH2	-7.71	116.44	120.30
1	A	583	ASP	CB-CG-OD2	6.37	124.03	118.30
1	A	92	ARG	NE-CZ-NH2	-6.35	117.12	120.30
1	A	610	ASP	CB-CG-OD2	6.28	123.95	118.30
1	A	439	ASP	CB-CG-OD2	6.17	123.86	118.30
1	A	177	ASP	CB-CG-OD2	5.72	123.45	118.30
1	A	285	ASP	CB-CG-OD2	5.70	123.43	118.30
1	A	343	ASP	CB-CG-OD2	5.62	123.36	118.30
1	A	296	ASP	CB-CG-OD2	5.33	123.10	118.30
1	A	409	ARG	NE-CZ-NH1	5.11	122.85	120.30

There are no chirality outliers.

There are no planarity outliers.

### 5.2 Too-close contacts [i](#)

In the following table, the Non-H and H(model) columns list the number of non-hydrogen atoms and hydrogen atoms in the chain respectively. The H(added) column lists the number of hydrogen atoms added and optimized by MolProbity. The Clashes column lists the number of clashes within the asymmetric unit, whereas Symm-Clashes lists symmetry-related clashes.

Mol	Chain	Non-H	H(model)	H(added)	Clashes	Symm-Clashes
1	A	3474	0	3467	22	0
2	A	53	0	30	3	0
3	A	6	0	5	0	0
4	A	194	0	0	2	0
All	All	3727	0	3502	24	0

The all-atom clashscore is defined as the number of clashes found per 1000 atoms (including hydrogen atoms). The all-atom clashscore for this structure is 3.

All (24) close contacts within the same asymmetric unit are listed below, sorted by their clash magnitude.

Atom-1	Atom-2	Interatomic distance (Å)	Clash overlap (Å)
1:A:92:ARG:NH2	1:A:382:ASP:OD2	2.23	0.68
1:A:503:TYR:OH	1:A:505:PRO:HA	1.98	0.63
1:A:409:ARG:HD2	4:A:2004:HOH:O	2.00	0.61
1:A:409:ARG:CD	4:A:2004:HOH:O	2.50	0.60
1:A:540:TYR:HB2	2:A:2001:FAD:HM72	1.84	0.58
1:A:111:LEU:HD22	1:A:585:VAL:HG13	1.93	0.51
1:A:261:THR:HG21	1:A:541:ALA:HB1	1.96	0.47
1:A:410:CYS:HB3	1:A:411:PRO:HD3	1.98	0.46
1:A:396:TRP:CH2	1:A:398:GLY:HA3	2.51	0.45
1:A:261:THR:HG22	1:A:514:HIS:CG	2.50	0.45
1:A:400:GLY:HA2	1:A:429:MET:O	2.17	0.44
2:A:2001:FAD:H9	2:A:2001:FAD:H1'1	1.73	0.44
1:A:570:ILE:HD12	1:A:580:LEU:CD2	2.47	0.44
1:A:570:ILE:HD12	1:A:580:LEU:HD21	1.99	0.44
1:A:518:GLU:HB2	1:A:519:PRO:HD3	2.00	0.43
1:A:396:TRP:CZ2	1:A:398:GLY:HA3	2.54	0.42
1:A:110:LEU:HD13	1:A:465:SER:HA	2.02	0.42
1:A:396:TRP:O	1:A:426:ARG:NH1	2.53	0.42
1:A:503:TYR:CZ	1:A:505:PRO:HA	2.55	0.41
1:A:377:LEU:HD23	1:A:409:ARG:CZ	2.51	0.41
2:A:2001:FAD:H1'1	2:A:2001:FAD:H4'	1.87	0.41
1:A:135:LEU:HD11	1:A:519:PRO:HB2	2.03	0.40
1:A:137:ASN:ND2	1:A:142:SER:CB	2.84	0.40
1:A:431:ARG:HA	1:A:483:GLN:HB2	2.04	0.40

There are no symmetry-related clashes.

## 5.3 Torsion angles [i](#)

### 5.3.1 Protein backbone [i](#)

In the following table, the Percentiles column shows the percent Ramachandran outliers of the chain as a percentile score with respect to all X-ray entries followed by that with respect to entries of similar resolution.

The Analysed column shows the number of residues for which the backbone conformation was analysed, and the total number of residues.

Mol	Chain	Analysed	Favoured	Allowed	Outliers	Percentiles
1	A	444/602 (74%)	435 (98%)	9 (2%)	0	100 100

There are no Ramachandran outliers to report.

### 5.3.2 Protein sidechains [i](#)

In the following table, the Percentiles column shows the percent sidechain outliers of the chain as a percentile score with respect to all X-ray entries followed by that with respect to entries of similar resolution.

The Analysed column shows the number of residues for which the sidechain conformation was analysed, and the total number of residues.

Mol	Chain	Analysed	Rotameric	Outliers	Percentiles
1	A	347/490 (71%)	332 (96%)	15 (4%)	29 26

All (15) residues with a non-rotameric sidechain are listed below:

Mol	Chain	Res	Type
1	A	99	TYR
1	A	111	LEU
1	A	168	LEU
1	A	254	LEU
1	A	344	ARG
1	A	361	ARG
1	A	384	LEU
1	A	406	TYR
1	A	426	ARG
1	A	443	LYS
1	A	495	ILE
1	A	501	GLN
1	A	547	GLU

*Continued on next page...*

*Continued from previous page...*

Mol	Chain	Res	Type
1	A	563	ASN
1	A	573	THR

Sometimes sidechains can be flipped to improve hydrogen bonding and reduce clashes. All (8) such sidechains are listed below:

Mol	Chain	Res	Type
1	A	130	GLN
1	A	137	ASN
1	A	271	ASN
1	A	298	GLN
1	A	305	GLN
1	A	497	GLN
1	A	501	GLN
1	A	534	ASN

### 5.3.3 RNA [i](#)

There are no RNA molecules in this entry.

## 5.4 Non-standard residues in protein, DNA, RNA chains [i](#)

There are no non-standard protein/DNA/RNA residues in this entry.

## 5.5 Carbohydrates [i](#)

There are no monosaccharides in this entry.

## 5.6 Ligand geometry [i](#)

2 ligands are modelled in this entry.

In the following table, the Counts columns list the number of bonds (or angles) for which Mogul statistics could be retrieved, the number of bonds (or angles) that are observed in the model and the number of bonds (or angles) that are defined in the Chemical Component Dictionary. The Link column lists molecule types, if any, to which the group is linked. The Z score for a bond length (or angle) is the number of standard deviations the observed value is removed from the expected value. A bond length (or angle) with  $|Z| > 2$  is considered an outlier worth inspection. RMSZ is the root-mean-square of all Z scores of the bond lengths (or angles).

Mol	Type	Chain	Res	Link	Bond lengths			Bond angles		
					Counts	RMSZ	# Z  > 2	Counts	RMSZ	# Z  > 2
2	FAD	A	2001	-	53,58,58	1.56	6 (11%)	68,89,89	1.54	11 (16%)
3	2OP	A	2002	-	5,5,5	0.98	0	4,6,6	1.06	0

In the following table, the Chirals column lists the number of chiral outliers, the number of chiral centers analysed, the number of these observed in the model and the number defined in the Chemical Component Dictionary. Similar counts are reported in the Torsion and Rings columns. '-' means no outliers of that kind were identified.

Mol	Type	Chain	Res	Link	Chirals	Torsions	Rings
2	FAD	A	2001	-	1/1/9/9	5/30/50/50	0/6/6/6
3	2OP	A	2002	-	-	1/4/4/4	-

All (6) bond length outliers are listed below:

Mol	Chain	Res	Type	Atoms	Z	Observed(Å)	Ideal(Å)
2	A	2001	FAD	C4X-N5	5.00	1.40	1.30
2	A	2001	FAD	O4B-C1B	4.97	1.48	1.41
2	A	2001	FAD	O4B-C4B	-4.02	1.36	1.45
2	A	2001	FAD	C5'-C4'	3.46	1.56	1.51
2	A	2001	FAD	C2A-N1A	3.36	1.40	1.33
2	A	2001	FAD	C10-N1	2.69	1.38	1.33

All (11) bond angle outliers are listed below:

Mol	Chain	Res	Type	Atoms	Z	Observed(°)	Ideal(°)
2	A	2001	FAD	O4B-C4B-C5B	4.93	125.58	109.37
2	A	2001	FAD	N3A-C2A-N1A	-4.21	122.09	128.68
2	A	2001	FAD	C4X-C10-N10	3.27	121.26	116.48
2	A	2001	FAD	O4B-C4B-C3B	3.04	111.12	105.11
2	A	2001	FAD	C10-C4X-N5	-2.68	119.17	124.86
2	A	2001	FAD	C9-C9A-N10	-2.31	118.71	121.84
2	A	2001	FAD	C5X-C9A-N10	2.12	120.14	117.95
2	A	2001	FAD	C4-N3-C2	-2.10	121.77	125.64
2	A	2001	FAD	C5A-C6A-N6A	2.08	123.52	120.35
2	A	2001	FAD	O5B-C5B-C4B	2.06	116.08	108.99
2	A	2001	FAD	C5B-C4B-C3B	2.03	122.79	115.18

All (1) chirality outliers are listed below:

Mol	Chain	Res	Type	Atom
2	A	2001	FAD	C4B

All (6) torsion outliers are listed below:

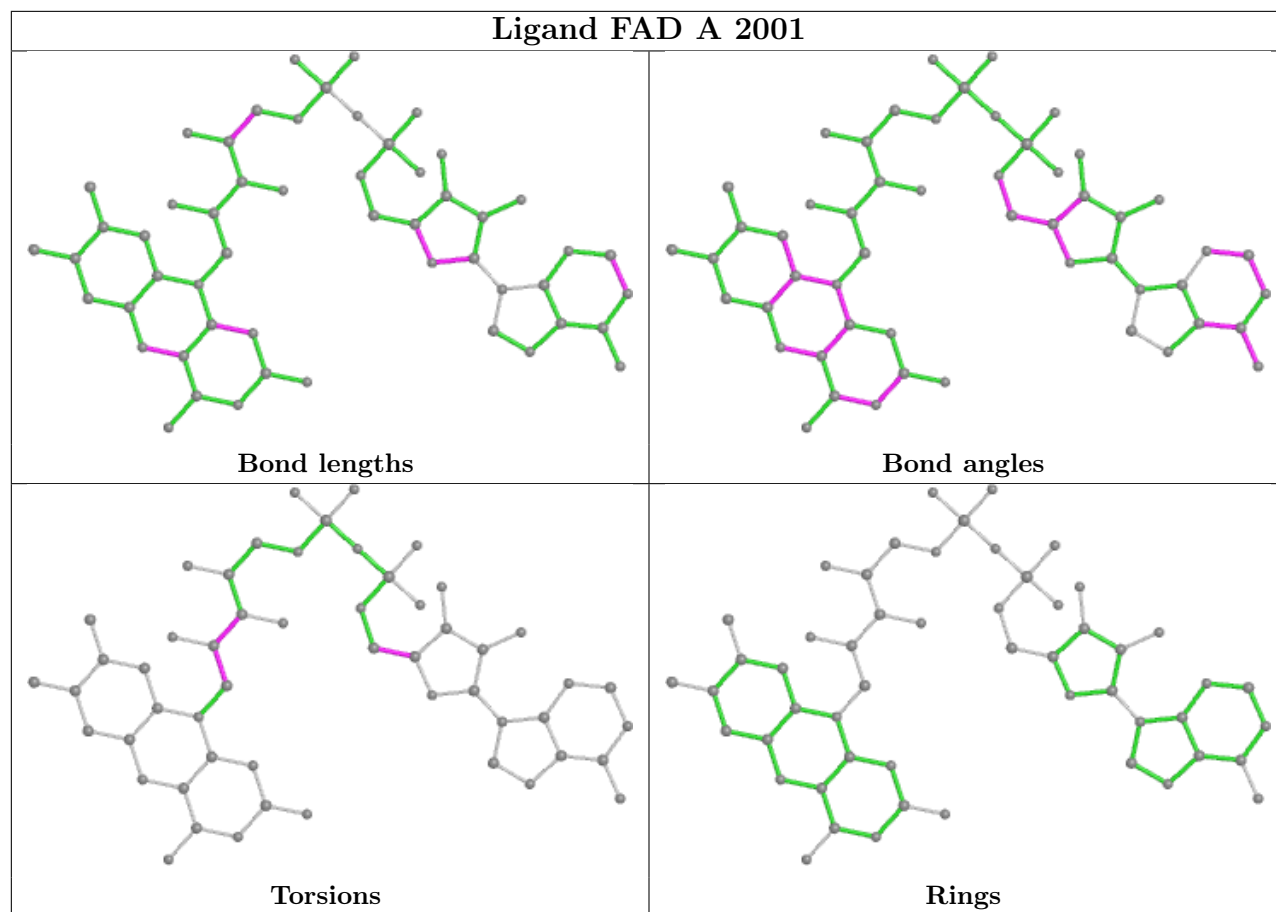
Mol	Chain	Res	Type	Atoms
2	A	2001	FAD	N10-C1'-C2'-O2'
2	A	2001	FAD	N10-C1'-C2'-C3'
2	A	2001	FAD	C1'-C2'-C3'-C4'
2	A	2001	FAD	O4B-C4B-C5B-O5B
2	A	2001	FAD	C3B-C4B-C5B-O5B
3	A	2002	2OP	O-C-CA-OHN

There are no ring outliers.

1 monomer is involved in 3 short contacts:

Mol	Chain	Res	Type	Clashes	Symm-Clashes
2	A	2001	FAD	3	0

The following is a two-dimensional graphical depiction of Mogul quality analysis of bond lengths, bond angles, torsion angles, and ring geometry for all instances of the Ligand of Interest. In addition, ligands with molecular weight > 250 and outliers as shown on the validation Tables will also be included. For torsion angles, if less than 5% of the Mogul distribution of torsion angles is within 10 degrees of the torsion angle in question, then that torsion angle is considered an outlier. Any bond that is central to one or more torsion angles identified as an outlier by Mogul will be highlighted in the graph. For rings, the root-mean-square deviation (RMSD) between the ring in question and similar rings identified by Mogul is calculated over all ring torsion angles. If the average RMSD is greater than 60 degrees and the minimal RMSD between the ring in question and any Mogul-identified rings is also greater than 60 degrees, then that ring is considered an outlier. The outliers are highlighted in purple. The color gray indicates Mogul did not find sufficient equivalents in the CSD to analyse the geometry.



## 5.7 Other polymers [i](#)

There are no such residues in this entry.

## 5.8 Polymer linkage issues [i](#)

There are no chain breaks in this entry.

## 6 Fit of model and data

### 6.1 Protein, DNA and RNA chains

In the following table, the column labelled ‘#RSRZ> 2’ contains the number (and percentage) of RSRZ outliers, followed by percent RSRZ outliers for the chain as percentile scores relative to all X-ray entries and entries of similar resolution. The OWAB column contains the minimum, median, 95<sup>th</sup> percentile and maximum values of the occupancy-weighted average B-factor per residue. The column labelled ‘Q< 0.9’ lists the number of (and percentage) of residues with an average occupancy less than 0.9.

Mol	Chain	Analysed	<RSRZ>	#RSRZ>2	OWAB(Å <sup>2</sup> )	Q<0.9
1	A	450/602 (74%)	0.59	52 (11%) <b>4</b> <b>4</b>	17, 29, 56, 76	0

All (52) RSRZ outliers are listed below:

Mol	Chain	Res	Type	RSRZ
1	A	244	ILE	6.5
1	A	164	ALA	5.2
1	A	575	LEU	5.2
1	A	163	VAL	5.1
1	A	184	LEU	4.8
1	A	145	ALA	4.3
1	A	167	CYS	4.2
1	A	183	ALA	3.9
1	A	146	GLY	3.8
1	A	169	ALA	3.7
1	A	577	LEU	3.6
1	A	141	ALA	3.6
1	A	93	ALA	3.6
1	A	403	ILE	3.4
1	A	90	VAL	3.4
1	A	162	GLY	3.4
1	A	165	LEU	3.3
1	A	250	MET	3.2
1	A	247	GLY	3.2
1	A	529	ALA	3.1
1	A	246	LYS	3.0
1	A	432	LEU	2.9
1	A	138	GLN	2.8
1	A	129	TYR	2.8
1	A	402	VAL	2.8
1	A	347	GLU	2.7
1	A	401	PHE	2.6

*Continued on next page...*



*Continued from previous page...*

Mol	Chain	Res	Type	RSRZ
1	A	166	MET	2.6
1	A	88	GLN	2.6
1	A	369	ILE	2.5
1	A	253	ARG	2.5
1	A	343	ASP	2.4
1	A	451	GLU	2.4
1	A	172	LEU	2.4
1	A	450	LEU	2.4
1	A	139	LYS	2.4
1	A	433	VAL	2.4
1	A	342	TYR	2.3
1	A	118	GLN	2.3
1	A	328	ILE	2.3
1	A	144	ARG	2.2
1	A	119	PRO	2.2
1	A	142	SER	2.2
1	A	572	ASP	2.2
1	A	546	HIS	2.1
1	A	245	ARG	2.1
1	A	130	GLN	2.1
1	A	430	ILE	2.1
1	A	122	GLU	2.1
1	A	298	GLN	2.0
1	A	371	ALA	2.0
1	A	346	MET	2.0

## 6.2 Non-standard residues in protein, DNA, RNA chains [i](#)

There are no non-standard protein/DNA/RNA residues in this entry.

## 6.3 Carbohydrates [i](#)

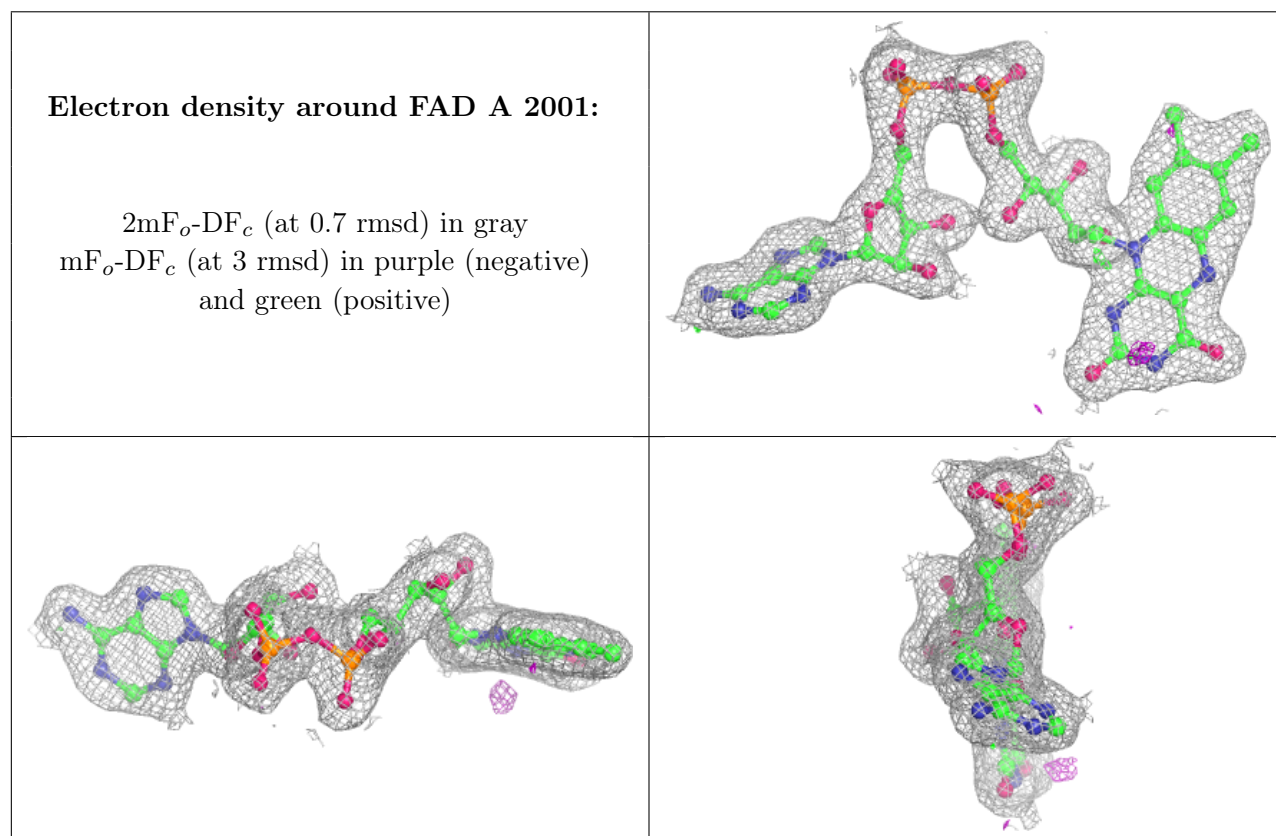
There are no monosaccharides in this entry.

## 6.4 Ligands [i](#)

In the following table, the Atoms column lists the number of modelled atoms in the group and the number defined in the chemical component dictionary. The B-factors column lists the minimum, median, 95<sup>th</sup> percentile and maximum values of B factors of atoms in the group. The column labelled 'Q< 0.9' lists the number of atoms with occupancy less than 0.9.

Mol	Type	Chain	Res	Atoms	RSCC	RSR	B-factors( $\text{\AA}^2$ )	Q<0.9
3	2OP	A	2002	6/6	0.97	0.19	27,28,29,29	0
2	FAD	A	2001	53/53	0.98	0.14	23,27,31,32	0

The following is a graphical depiction of the model fit to experimental electron density of all instances of the Ligand of Interest. In addition, ligands with molecular weight > 250 and outliers as shown on the geometry validation Tables will also be included. Each fit is shown from different orientation to approximate a three-dimensional view.



## 6.5 Other polymers [i](#)

There are no such residues in this entry.