



wwPDB X-ray Structure Validation Summary Report ⓘ

Mar 4, 2024 – 11:36 PM EST

PDB ID : 1TQ2
Title : Crystal Structure of IIGP1: a paradigm for interferon inducible p47 resistance GTPases
Authors : Ghosh, A.; Uthaiyah, R.; Howard, J.; Herrmann, C.; Wolf, E.
Deposited on : 2004-06-16
Resolution : 2.70 Å(reported)

This is a wwPDB X-ray Structure Validation Summary Report for a publicly released PDB entry.

We welcome your comments at validation@mail.wwpdb.org

A user guide is available at

<https://www.wwpdb.org/validation/2017/XrayValidationReportHelp>

with specific help available everywhere you see the ⓘ symbol.

The types of validation reports are described at

<http://www.wwpdb.org/validation/2017/FAQs#types>.

The following versions of software and data (see [references ⓘ](#)) were used in the production of this report:

MolProbity : 4.02b-467
Mogul : 1.8.5 (274361), CSD as541be (2020)
Xtriage (Phenix) : 1.13
EDS : 2.36
buster-report : 1.1.7 (2018)
Percentile statistics : 20191225.v01 (using entries in the PDB archive December 25th 2019)
Refmac : 5.8.0158
CCP4 : 7.0.044 (Gargrove)
Ideal geometry (proteins) : Engh & Huber (2001)
Ideal geometry (DNA, RNA) : Parkinson et al. (1996)
Validation Pipeline (wwPDB-VP) : 2.36

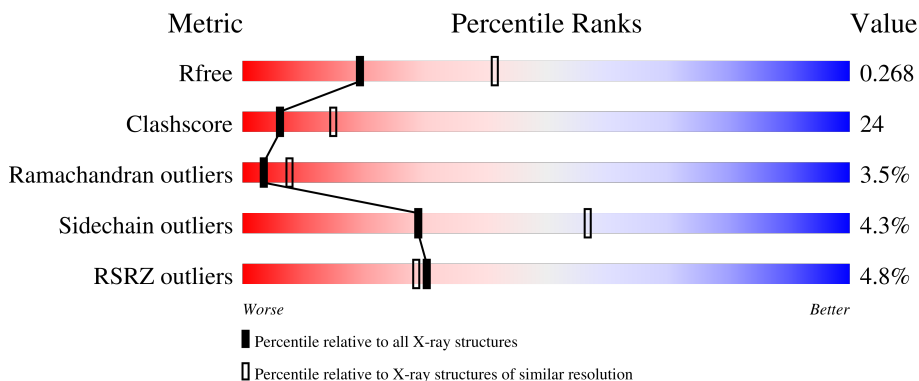
1 Overall quality at a glance

The following experimental techniques were used to determine the structure:

X-RAY DIFFRACTION

The reported resolution of this entry is 2.70 Å.

Percentile scores (ranging between 0-100) for global validation metrics of the entry are shown in the following graphic. The table shows the number of entries on which the scores are based.



Metric	Whole archive (#Entries)	Similar resolution (#Entries, resolution range(Å))
R_{free}	130704	2808 (2.70-2.70)
Clashscore	141614	3122 (2.70-2.70)
Ramachandran outliers	138981	3069 (2.70-2.70)
Sidechain outliers	138945	3069 (2.70-2.70)
RSRZ outliers	127900	2737 (2.70-2.70)

The table below summarises the geometric issues observed across the polymeric chains and their fit to the electron density. The red, orange, yellow and green segments of the lower bar indicate the fraction of residues that contain outliers for ≥ 3 , 2, 1 and 0 types of geometric quality criteria respectively. A grey segment represents the fraction of residues that are not modelled. The numeric value for each fraction is indicated below the corresponding segment, with a dot representing fractions $\leq 5\%$. The upper red bar (where present) indicates the fraction of residues that have poor fit to the electron density. The numeric value is given above the bar.

Mol	Chain	Length	Quality of chain
1	A	422	
1	B	422	

The following table lists non-polymeric compounds, carbohydrate monomers and non-standard residues in protein, DNA, RNA chains that are outliers for geometric or electron-density-fit criteria:

Mol	Type	Chain	Res	Chirality	Geometry	Clashes	Electron density
4	MPD	B	1000	-	-	X	-

2 Entry composition [i](#)

There are 5 unique types of molecules in this entry. The entry contains 6573 atoms, of which 0 are hydrogens and 0 are deuteriums.

In the tables below, the ZeroOcc column contains the number of atoms modelled with zero occupancy, the AltConf column contains the number of residues with at least one atom in alternate conformation and the Trace column contains the number of residues modelled with at most 2 atoms.

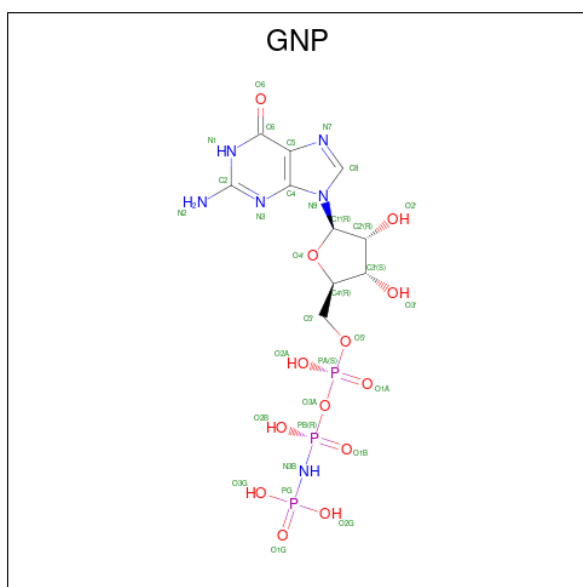
- Molecule 1 is a protein called interferon-inducible GTPase.

Mol	Chain	Residues	Atoms					ZeroOcc	AltConf	Trace
			Total	C	N	O	S			
1	A	395	3200	2065	524	597	14	0	0	0
1	B	392	3181	2053	520	594	14	0	0	0

There are 22 discrepancies between the modelled and reference sequences:

Chain	Residue	Modelled	Actual	Comment	Reference
A	412	LYS	-	cloning artifact	UNP Q9QZ85
A	413	LEU	-	cloning artifact	UNP Q9QZ85
A	414	GLY	-	cloning artifact	UNP Q9QZ85
A	415	ARG	-	cloning artifact	UNP Q9QZ85
A	416	LEU	-	cloning artifact	UNP Q9QZ85
A	417	GLU	-	cloning artifact	UNP Q9QZ85
A	418	ARG	-	cloning artifact	UNP Q9QZ85
A	419	PRO	-	cloning artifact	UNP Q9QZ85
A	420	HIS	-	cloning artifact	UNP Q9QZ85
A	421	ARG	-	cloning artifact	UNP Q9QZ85
A	422	ASP	-	cloning artifact	UNP Q9QZ85
B	412	LYS	-	cloning artifact	UNP Q9QZ85
B	413	LEU	-	cloning artifact	UNP Q9QZ85
B	414	GLY	-	cloning artifact	UNP Q9QZ85
B	415	ARG	-	cloning artifact	UNP Q9QZ85
B	416	LEU	-	cloning artifact	UNP Q9QZ85
B	417	GLU	-	cloning artifact	UNP Q9QZ85
B	418	ARG	-	cloning artifact	UNP Q9QZ85
B	419	PRO	-	cloning artifact	UNP Q9QZ85
B	420	HIS	-	cloning artifact	UNP Q9QZ85
B	421	ARG	-	cloning artifact	UNP Q9QZ85
B	422	ASP	-	cloning artifact	UNP Q9QZ85

- Molecule 2 is PHOSPHOAMINOPHOSPHONIC ACID-GUANYLATE ESTER (three-letter code: GNP) (formula: C₁₀H₁₇N₆O₁₃P₃).



Mol	Chain	Residues	Atoms				ZeroOcc	AltConf	
2	A	1	Total	C	N	O	P	0	0
			32	10	6	13	3		
2	B	1	Total	C	N	O	P	0	0
			32	10	6	13	3		

- Molecule 3 is MAGNESIUM ION (three-letter code: MG) (formula: Mg).

Mol	Chain	Residues	Atoms		ZeroOcc	AltConf
3	B	1	Total	Mg	0	0
			1	1		

- Molecule 4 is (4S)-2-METHYL-2,4-PENTANEDIOL (three-letter code: MPD) (formula: C₆H₁₄O₂).



Mol	Chain	Residues	Atoms	ZeroOcc	AltConf
4	B	1	Total C O 8 6 2	0	0

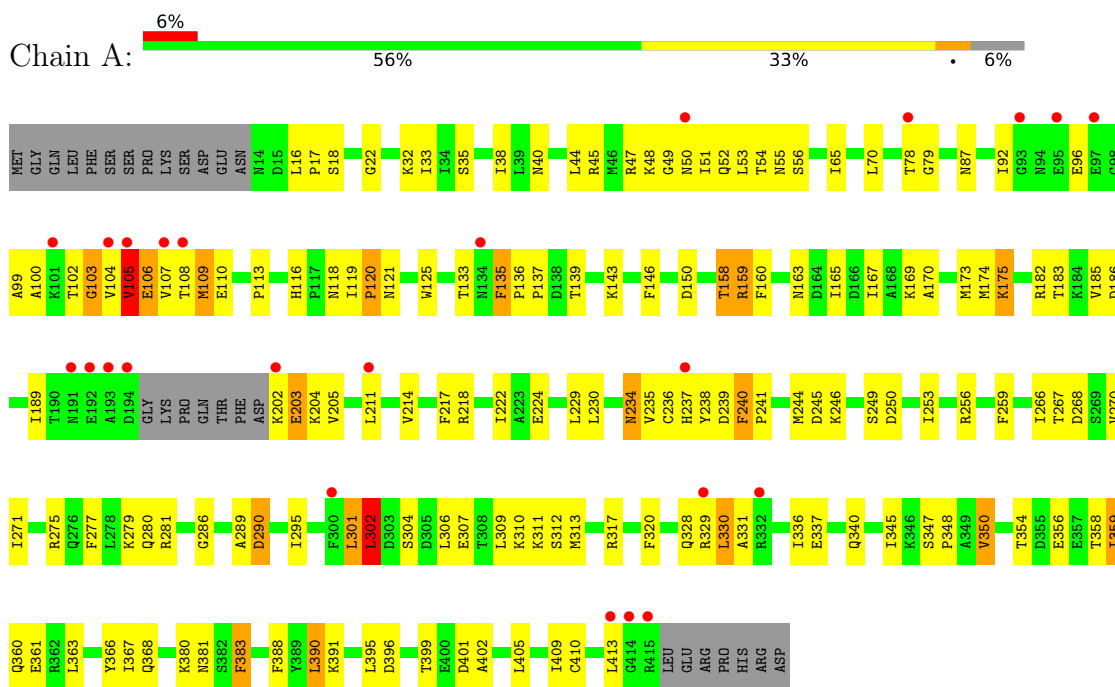
- Molecule 5 is water.

Mol	Chain	Residues	Atoms	ZeroOcc	AltConf
5	A	50	Total O 50 50	0	0
5	B	69	Total O 69 69	0	0

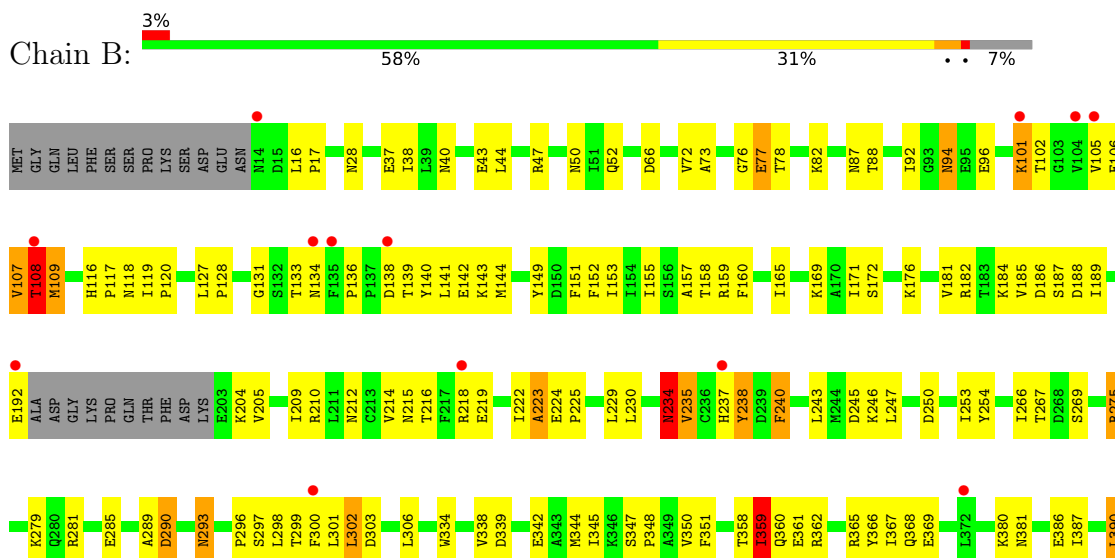
3 Residue-property plots [i](#)

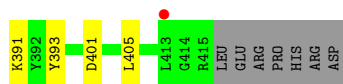
These plots are drawn for all protein, RNA, DNA and oligosaccharide chains in the entry. The first graphic for a chain summarises the proportions of the various outlier classes displayed in the second graphic. The second graphic shows the sequence view annotated by issues in geometry and electron density. Residues are color-coded according to the number of geometric quality criteria for which they contain at least one outlier: green = 0, yellow = 1, orange = 2 and red = 3 or more. A red dot above a residue indicates a poor fit to the electron density ($RSRZ > 2$). Stretches of 2 or more consecutive residues without any outlier are shown as a green connector. Residues present in the sample, but not in the model, are shown in grey.

- Molecule 1: interferon-inducible GTPase



- Molecule 1: interferon-inducible GTPase





4 Data and refinement statistics

Property	Value	Source
Space group	P 21 21 21	Depositor
Cell constants a, b, c, α , β , γ	81.86Å 92.67Å 142.40Å 90.00° 90.00° 90.00°	Depositor
Resolution (Å)	20.00 – 2.70 19.96 – 2.70	Depositor EDS
% Data completeness (in resolution range)	93.1 (20.00-2.70) 93.4 (19.96-2.70)	Depositor EDS
R_{merge}	(Not available)	Depositor
R_{sym}	0.13	Depositor
$\langle I/\sigma(I) \rangle$ ¹	4.20 (at 2.71Å)	Xtrriage
Refinement program	CNS 1.1	Depositor
R, R_{free}	0.222 , 0.280 0.213 , 0.268	Depositor DCC
R_{free} test set	1419 reflections (5.00%)	wwPDB-VP
Wilson B-factor (Å ²)	54.5	Xtrriage
Anisotropy	0.386	Xtrriage
Bulk solvent k_{sol} (e/Å ³), B_{sol} (Å ²)	0.30 , 48.4	EDS
L-test for twinning ²	$\langle L \rangle = 0.49$, $\langle L^2 \rangle = 0.32$	Xtrriage
Estimated twinning fraction	No twinning to report.	Xtrriage
F_o, F_c correlation	0.93	EDS
Total number of atoms	6573	wwPDB-VP
Average B, all atoms (Å ²)	57.0	wwPDB-VP

Xtrriage's analysis on translational NCS is as follows: *The largest off-origin peak in the Patterson function is 5.14% of the height of the origin peak. No significant pseudotranslation is detected.*

¹Intensities estimated from amplitudes.

²Theoretical values of $\langle |L| \rangle$, $\langle L^2 \rangle$ for acentric reflections are 0.5, 0.333 respectively for untwinned datasets, and 0.375, 0.2 for perfectly twinned datasets.

5 Model quality

5.1 Standard geometry

Bond lengths and bond angles in the following residue types are not validated in this section: MG, GNP, MPD

The Z score for a bond length (or angle) is the number of standard deviations the observed value is removed from the expected value. A bond length (or angle) with $|Z| > 5$ is considered an outlier worth inspection. RMSZ is the root-mean-square of all Z scores of the bond lengths (or angles).

Mol	Chain	Bond lengths		Bond angles	
		RMSZ	# Z >5	RMSZ	# Z >5
1	A	0.39	0/3264	0.61	0/4404
1	B	0.41	0/3245	0.60	0/4379
All	All	0.40	0/6509	0.60	0/8783

There are no bond length outliers.

There are no bond angle outliers.

There are no chirality outliers.

There are no planarity outliers.

5.2 Too-close contacts

In the following table, the Non-H and H(model) columns list the number of non-hydrogen atoms and hydrogen atoms in the chain respectively. The H(added) column lists the number of hydrogen atoms added and optimized by MolProbity. The Clashes column lists the number of clashes within the asymmetric unit, whereas Symm-Clashes lists symmetry-related clashes.

Mol	Chain	Non-H	H(model)	H(added)	Clashes	Symm-Clashes
1	A	3200	0	3236	172	0
1	B	3181	0	3216	152	0
2	A	32	0	13	2	0
2	B	32	0	13	2	0
3	B	1	0	0	0	0
4	B	8	0	14	7	0
5	A	50	0	0	10	0
5	B	69	0	0	11	0
All	All	6573	0	6492	317	0

The all-atom clashscore is defined as the number of clashes found per 1000 atoms (including hydrogen atoms). The all-atom clashscore for this structure is 24.

The worst 5 of 317 close contacts within the same asymmetric unit are listed below, sorted by their clash magnitude.

Atom-1	Atom-2	Interatomic distance (Å)	Clash overlap (Å)
1:B:105:VAL:HG12	1:B:106:GLU:H	1.24	1.01
1:A:340:GLN:HG3	5:A:506:HOH:O	1.68	0.90
1:A:45:ARG:HD3	1:A:53:LEU:HB3	1.56	0.88
1:B:159:ARG:HB3	1:B:216:THR:HG21	1.57	0.86
1:A:87:ASN:HD21	1:A:100:ALA:H	1.27	0.82

There are no symmetry-related clashes.

5.3 Torsion angles [i](#)

5.3.1 Protein backbone [i](#)

In the following table, the Percentiles column shows the percent Ramachandran outliers of the chain as a percentile score with respect to all X-ray entries followed by that with respect to entries of similar resolution.

The Analysed column shows the number of residues for which the backbone conformation was analysed, and the total number of residues.

Mol	Chain	Analysed	Favoured	Allowed	Outliers	Percentiles	
1	A	391/422 (93%)	345 (88%)	31 (8%)	15 (4%)	3	7
1	B	388/422 (92%)	343 (88%)	33 (8%)	12 (3%)	4	9
All	All	779/844 (92%)	688 (88%)	64 (8%)	27 (4%)	3	8

5 of 27 Ramachandran outliers are listed below:

Mol	Chain	Res	Type
1	A	106	GLU
1	A	203	GLU
1	A	235	VAL
1	A	302	LEU
1	B	107	VAL

5.3.2 Protein sidechains [i](#)

In the following table, the Percentiles column shows the percent sidechain outliers of the chain as a percentile score with respect to all X-ray entries followed by that with respect to entries of similar resolution.

The Analysed column shows the number of residues for which the sidechain conformation was analysed, and the total number of residues.

Mol	Chain	Analysed	Rotameric	Outliers	Percentiles	
1	A	359/386 (93%)	344 (96%)	15 (4%)	30	58
1	B	358/386 (93%)	342 (96%)	16 (4%)	27	55
All	All	717/772 (93%)	686 (96%)	31 (4%)	29	57

5 of 31 residues with a non-rotameric sidechain are listed below:

Mol	Chain	Res	Type
1	A	390	LEU
1	B	339	ASP
1	B	109	MET
1	B	368	GLN
1	B	275	ARG

Sometimes sidechains can be flipped to improve hydrogen bonding and reduce clashes. 5 of 23 such sidechains are listed below:

Mol	Chain	Res	Type
1	B	163	ASN
1	B	212	ASN
1	B	207	GLN
1	B	215	ASN
1	A	280	GLN

5.3.3 RNA [i](#)

There are no RNA molecules in this entry.

5.4 Non-standard residues in protein, DNA, RNA chains [i](#)

There are no non-standard protein/DNA/RNA residues in this entry.

5.5 Carbohydrates [i](#)

There are no monosaccharides in this entry.

5.6 Ligand geometry

Of 4 ligands modelled in this entry, 1 is monoatomic - leaving 3 for Mogul analysis.

In the following table, the Counts columns list the number of bonds (or angles) for which Mogul statistics could be retrieved, the number of bonds (or angles) that are observed in the model and the number of bonds (or angles) that are defined in the Chemical Component Dictionary. The Link column lists molecule types, if any, to which the group is linked. The Z score for a bond length (or angle) is the number of standard deviations the observed value is removed from the expected value. A bond length (or angle) with $|Z| > 2$ is considered an outlier worth inspection. RMSZ is the root-mean-square of all Z scores of the bond lengths (or angles).

Mol	Type	Chain	Res	Link	Bond lengths			Bond angles		
					Counts	RMSZ	# Z > 2	Counts	RMSZ	# Z > 2
2	GNP	B	1500	3	29,34,34	3.81	16 (55%)	33,54,54	3.93	19 (57%)
4	MPD	B	1000	-	7,7,7	0.58	0	9,10,10	0.42	0
2	GNP	A	500	-	29,34,34	3.83	18 (62%)	33,54,54	3.92	19 (57%)

In the following table, the Chirals column lists the number of chiral outliers, the number of chiral centers analysed, the number of these observed in the model and the number defined in the Chemical Component Dictionary. Similar counts are reported in the Torsion and Rings columns. '-' means no outliers of that kind were identified.

Mol	Type	Chain	Res	Link	Chirals	Torsions	Rings
2	GNP	B	1500	3	-	6/14/38/38	0/3/3/3
4	MPD	B	1000	-	-	0/5/5/5	-
2	GNP	A	500	-	-	6/14/38/38	0/3/3/3

The worst 5 of 34 bond length outliers are listed below:

Mol	Chain	Res	Type	Atoms	Z	Observed(Å)	Ideal(Å)
2	A	500	GNP	C2-N1	9.06	1.51	1.35
2	B	1500	GNP	C2-N1	8.89	1.51	1.35
2	B	1500	GNP	PB-O2B	-8.70	1.33	1.56
2	A	500	GNP	PB-O2B	-8.62	1.33	1.56
2	A	500	GNP	PG-O1G	8.54	1.59	1.46

The worst 5 of 38 bond angle outliers are listed below:

Mol	Chain	Res	Type	Atoms	Z	Observed(°)	Ideal(°)
2	B	1500	GNP	C4-C5-C6	-12.47	108.90	120.80
2	A	500	GNP	C4-C5-C6	-12.38	108.98	120.80
2	B	1500	GNP	C2-N3-C4	7.66	124.11	115.36
2	A	500	GNP	C2-N3-C4	7.54	123.97	115.36

Continued on next page...

Continued from previous page...

Mol	Chain	Res	Type	Atoms	Z	Observed(°)	Ideal(°)
2	B	1500	GNP	C4-C5-N7	-7.46	101.62	109.40

There are no chirality outliers.

5 of 12 torsion outliers are listed below:

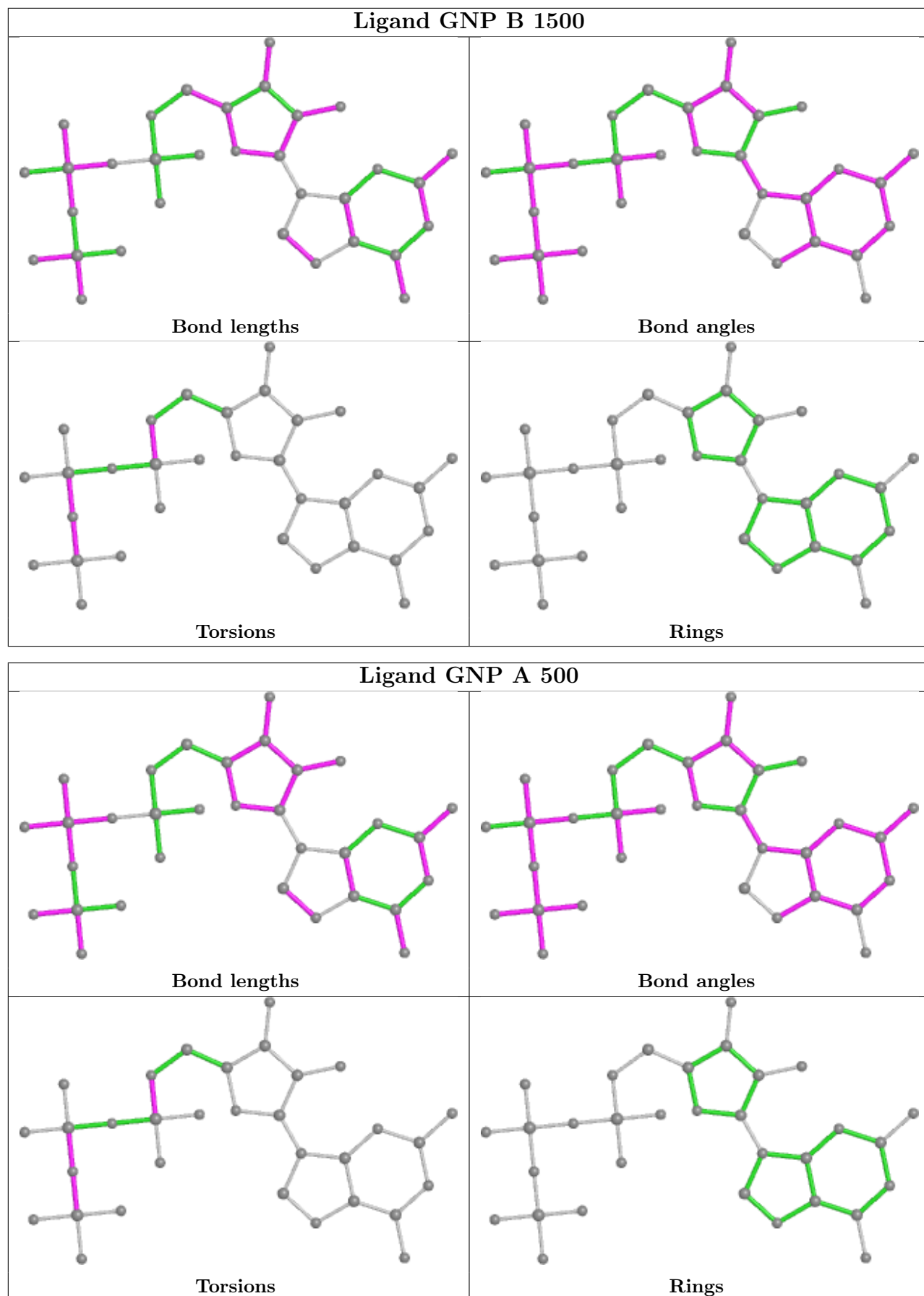
Mol	Chain	Res	Type	Atoms
2	A	500	GNP	PB-N3B-PG-O1G
2	A	500	GNP	PG-N3B-PB-O1B
2	A	500	GNP	PG-N3B-PB-O3A
2	A	500	GNP	C5'-O5'-PA-O2A
2	B	1500	GNP	PB-N3B-PG-O1G

There are no ring outliers.

3 monomers are involved in 11 short contacts:

Mol	Chain	Res	Type	Clashes	Symm-Clashes
2	B	1500	GNP	2	0
4	B	1000	MPD	7	0
2	A	500	GNP	2	0

The following is a two-dimensional graphical depiction of Mogul quality analysis of bond lengths, bond angles, torsion angles, and ring geometry for all instances of the Ligand of Interest. In addition, ligands with molecular weight > 250 and outliers as shown on the validation Tables will also be included. For torsion angles, if less than 5% of the Mogul distribution of torsion angles is within 10 degrees of the torsion angle in question, then that torsion angle is considered an outlier. Any bond that is central to one or more torsion angles identified as an outlier by Mogul will be highlighted in the graph. For rings, the root-mean-square deviation (RMSD) between the ring in question and similar rings identified by Mogul is calculated over all ring torsion angles. If the average RMSD is greater than 60 degrees and the minimal RMSD between the ring in question and any Mogul-identified rings is also greater than 60 degrees, then that ring is considered an outlier. The outliers are highlighted in purple. The color gray indicates Mogul did not find sufficient equivalents in the CSD to analyse the geometry.



5.7 Other polymers [i](#)

There are no such residues in this entry.

5.8 Polymer linkage issues [i](#)

There are no chain breaks in this entry.

6 Fit of model and data [i](#)

6.1 Protein, DNA and RNA chains [i](#)

In the following table, the column labelled ‘#RSRZ > 2’ contains the number (and percentage) of RSRZ outliers, followed by percent RSRZ outliers for the chain as percentile scores relative to all X-ray entries and entries of similar resolution. The OWAB column contains the minimum, median, 95th percentile and maximum values of the occupancy-weighted average B-factor per residue. The column labelled ‘Q < 0.9’ lists the number of (and percentage) of residues with an average occupancy less than 0.9.

Mol	Chain	Analysed	<RSRZ>	#RSRZ>2	OWAB(Å ²)	Q<0.9
1	A	395/422 (93%)	0.10	24 (6%) 21 20	25, 55, 98, 109	0
1	B	392/422 (92%)	0.01	14 (3%) 42 42	27, 52, 93, 103	0
All	All	787/844 (93%)	0.05	38 (4%) 30 28	25, 53, 96, 109	0

The worst 5 of 38 RSRZ outliers are listed below:

Mol	Chain	Res	Type	RSRZ
1	A	104	VAL	6.5
1	A	414	GLY	5.7
1	B	108	THR	5.5
1	B	105	VAL	5.0
1	A	107	VAL	4.6

6.2 Non-standard residues in protein, DNA, RNA chains [i](#)

There are no non-standard protein/DNA/RNA residues in this entry.

6.3 Carbohydrates [i](#)

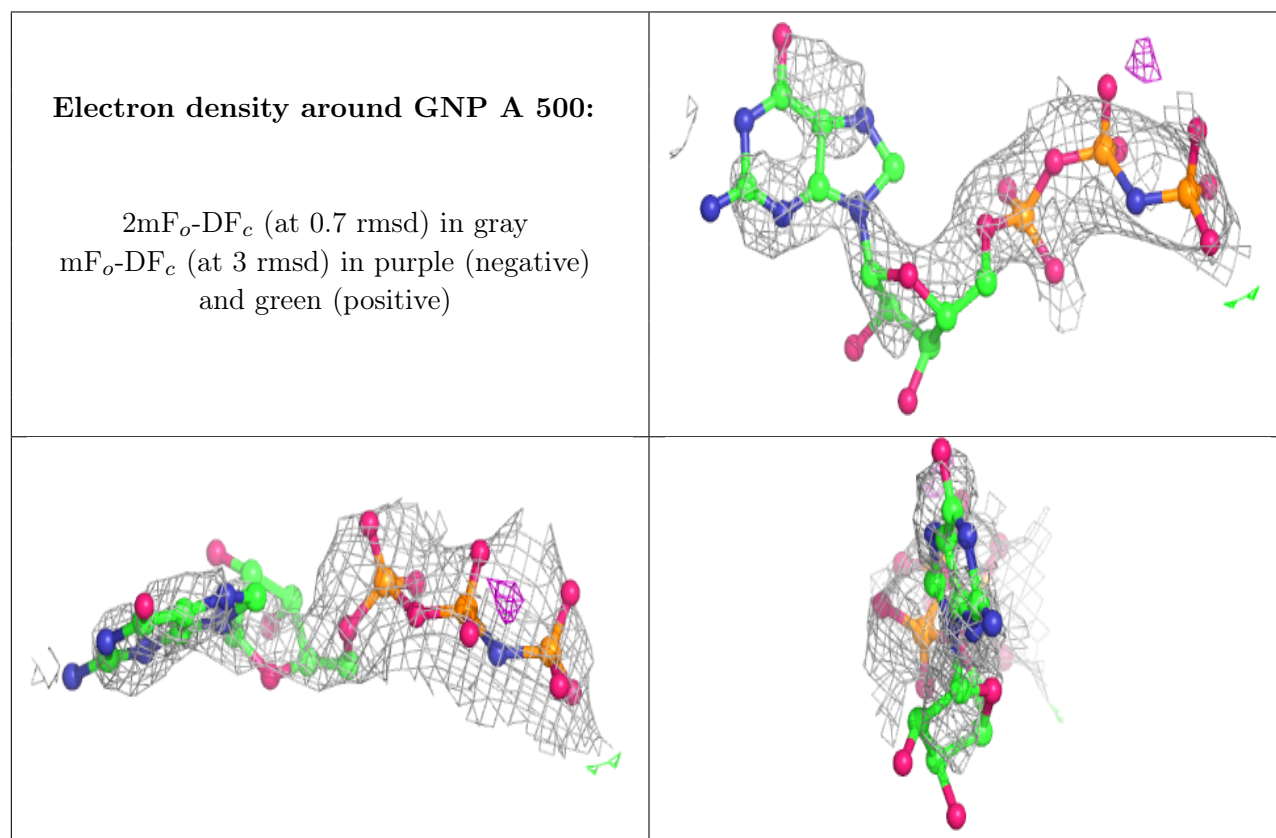
There are no monosaccharides in this entry.

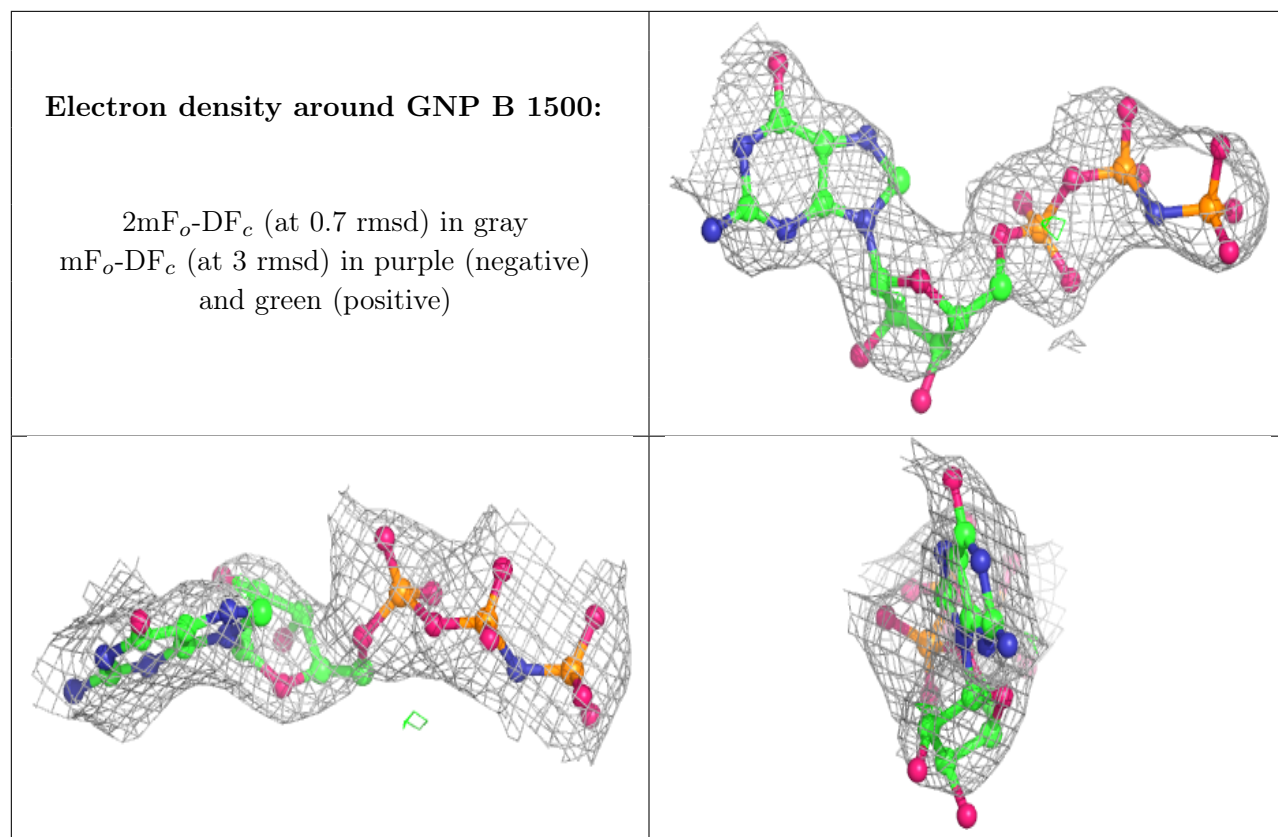
6.4 Ligands [i](#)

In the following table, the Atoms column lists the number of modelled atoms in the group and the number defined in the chemical component dictionary. The B-factors column lists the minimum, median, 95th percentile and maximum values of B factors of atoms in the group. The column labelled ‘Q < 0.9’ lists the number of atoms with occupancy less than 0.9.

Mol	Type	Chain	Res	Atoms	RSCC	RSR	B-factors(\AA^2)	Q<0.9
2	GNP	A	500	32/32	0.79	0.32	109,109,114,115	32
4	MPD	B	1000	8/8	0.82	0.31	66,68,72,73	0
2	GNP	B	1500	32/32	0.89	0.21	68,71,72,74	32
3	MG	B	1501	1/1	0.94	0.36	55,55,55,55	1

The following is a graphical depiction of the model fit to experimental electron density of all instances of the Ligand of Interest. In addition, ligands with molecular weight > 250 and outliers as shown on the geometry validation Tables will also be included. Each fit is shown from different orientation to approximate a three-dimensional view.





6.5 Other polymers [i](#)

There are no such residues in this entry.