



# Full wwPDB X-ray Structure Validation Report ⓘ

Aug 15, 2024 – 01:31 PM EDT

PDB ID : 8TQF  
Title : Crystal structure of Soybean SHMT8 in complex with PLP-glycine and diglutamylated 5-formyltetrahydrofolate  
Authors : Owuocha, L.F.; Beamer, L.J.  
Deposited on : 2023-08-07  
Resolution : 1.69 Å(reported)

This is a Full wwPDB X-ray Structure Validation Report for a publicly released PDB entry.

We welcome your comments at [validation@mail.wwpdb.org](mailto:validation@mail.wwpdb.org)

A user guide is available at

<https://www.wwpdb.org/validation/2017/XrayValidationReportHelp>

with specific help available everywhere you see the ⓘ symbol.

The types of validation reports are described at

<http://www.wwpdb.org/validation/2017/FAQs#types>.

---

The following versions of software and data (see [references ⓘ](#)) were used in the production of this report:

MolProbity : 4.02b-467  
Mogul : 1.8.5 (274361), CSD as541be (2020)  
Xtriage (Phenix) : 1.13  
EDS : 2.37.1  
buster-report : 1.1.7 (2018)  
Percentile statistics : 20191225.v01 (using entries in the PDB archive December 25th 2019)  
Refmac : 5.8.0158  
CCP4 : 7.0.044 (Gargrove)  
Ideal geometry (proteins) : Engh & Huber (2001)  
Ideal geometry (DNA, RNA) : Parkinson et al. (1996)  
Validation Pipeline (wwPDB-VP) : 2.37.1

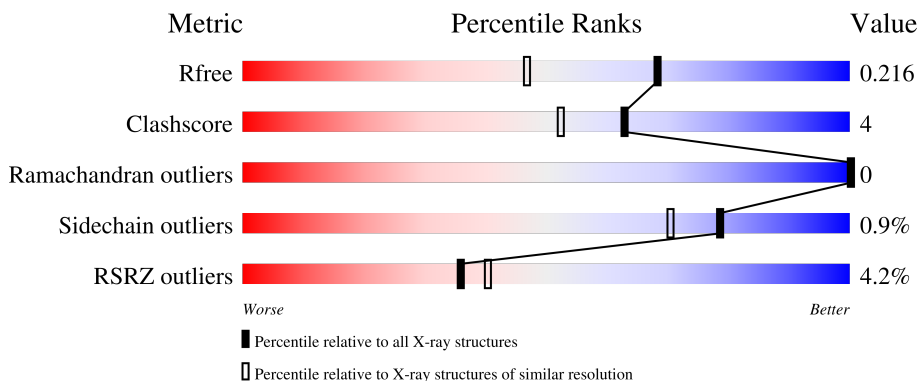
# 1 Overall quality at a glance

The following experimental techniques were used to determine the structure:

*X-RAY DIFFRACTION*


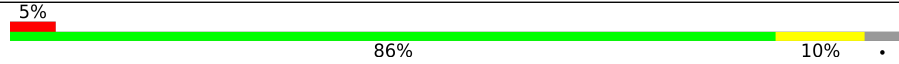
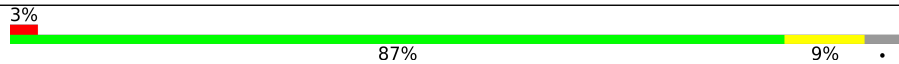

The reported resolution of this entry is 1.69 Å.

Percentile scores (ranging between 0-100) for global validation metrics of the entry are shown in the following graphic. The table shows the number of entries on which the scores are based.



Metric	Whole archive (#Entries)	Similar resolution (#Entries, resolution range(Å))
$R_{free}$	130704	4298 (1.70-1.70)
Clashscore	141614	4695 (1.70-1.70)
Ramachandran outliers	138981	4610 (1.70-1.70)
Sidechain outliers	138945	4610 (1.70-1.70)
RSRZ outliers	127900	4222 (1.70-1.70)

The table below summarises the geometric issues observed across the polymeric chains and their fit to the electron density. The red, orange, yellow and green segments of the lower bar indicate the fraction of residues that contain outliers for  $\geq 3$ , 2, 1 and 0 types of geometric quality criteria respectively. A grey segment represents the fraction of residues that are not modelled. The numeric value for each fraction is indicated below the corresponding segment, with a dot representing fractions  $\leq 5\%$ . The upper red bar (where present) indicates the fraction of residues that have poor fit to the electron density. The numeric value is given above the bar.

Mol	Chain	Length	Quality of chain
1	A	492	
1	B	492	
1	C	492	
1	D	492	

## 2 Entry composition [i](#)

There are 5 unique types of molecules in this entry. The entry contains 16518 atoms, of which 0 are hydrogens and 0 are deuteriums.

In the tables below, the ZeroOcc column contains the number of atoms modelled with zero occupancy, the AltConf column contains the number of residues with at least one atom in alternate conformation and the Trace column contains the number of residues modelled with at most 2 atoms.

- Molecule 1 is a protein called Serine hydroxymethyltransferase.

Mol	Chain	Residues	Atoms					ZeroOcc	AltConf	Trace
			Total	C	N	O	S			
1	A	472	3624	2307	613	685	19	0	10	0
1	B	472	3648	2318	622	691	17	0	8	0
1	C	472	3636	2316	619	683	18	0	7	0
1	D	472	3656	2326	626	686	18	0	9	0

There are 84 discrepancies between the modelled and reference sequences:

Chain	Residue	Modelled	Actual	Comment	Reference
A	-20	MET	-	initiating methionine	UNP A0A0R0IK90
A	-19	GLY	-	expression tag	UNP A0A0R0IK90
A	-18	SER	-	expression tag	UNP A0A0R0IK90
A	-17	SER	-	expression tag	UNP A0A0R0IK90
A	-16	HIS	-	expression tag	UNP A0A0R0IK90
A	-15	HIS	-	expression tag	UNP A0A0R0IK90
A	-14	HIS	-	expression tag	UNP A0A0R0IK90
A	-13	HIS	-	expression tag	UNP A0A0R0IK90
A	-12	HIS	-	expression tag	UNP A0A0R0IK90
A	-11	HIS	-	expression tag	UNP A0A0R0IK90
A	-10	HIS	-	expression tag	UNP A0A0R0IK90
A	-9	SER	-	expression tag	UNP A0A0R0IK90
A	-8	SER	-	expression tag	UNP A0A0R0IK90
A	-7	GLY	-	expression tag	UNP A0A0R0IK90
A	-6	LEU	-	expression tag	UNP A0A0R0IK90
A	-5	VAL	-	expression tag	UNP A0A0R0IK90
A	-4	PRO	-	expression tag	UNP A0A0R0IK90
A	-3	ARG	-	expression tag	UNP A0A0R0IK90
A	-2	GLY	-	expression tag	UNP A0A0R0IK90
A	-1	SER	-	expression tag	UNP A0A0R0IK90
A	0	HIS	-	expression tag	UNP A0A0R0IK90

*Continued on next page...*

*Continued from previous page...*

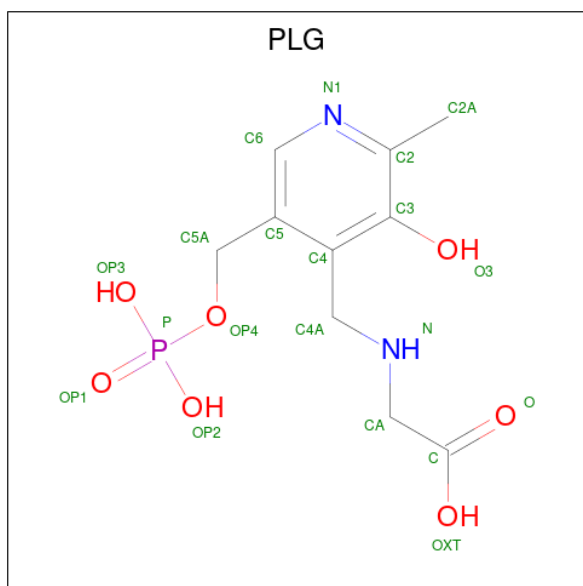
Chain	Residue	Modelled	Actual	Comment	Reference
B	-20	MET	-	initiating methionine	UNP A0A0R0IK90
B	-19	GLY	-	expression tag	UNP A0A0R0IK90
B	-18	SER	-	expression tag	UNP A0A0R0IK90
B	-17	SER	-	expression tag	UNP A0A0R0IK90
B	-16	HIS	-	expression tag	UNP A0A0R0IK90
B	-15	HIS	-	expression tag	UNP A0A0R0IK90
B	-14	HIS	-	expression tag	UNP A0A0R0IK90
B	-13	HIS	-	expression tag	UNP A0A0R0IK90
B	-12	HIS	-	expression tag	UNP A0A0R0IK90
B	-11	HIS	-	expression tag	UNP A0A0R0IK90
B	-10	HIS	-	expression tag	UNP A0A0R0IK90
B	-9	SER	-	expression tag	UNP A0A0R0IK90
B	-8	SER	-	expression tag	UNP A0A0R0IK90
B	-7	GLY	-	expression tag	UNP A0A0R0IK90
B	-6	LEU	-	expression tag	UNP A0A0R0IK90
B	-5	VAL	-	expression tag	UNP A0A0R0IK90
B	-4	PRO	-	expression tag	UNP A0A0R0IK90
B	-3	ARG	-	expression tag	UNP A0A0R0IK90
B	-2	GLY	-	expression tag	UNP A0A0R0IK90
B	-1	SER	-	expression tag	UNP A0A0R0IK90
B	0	HIS	-	expression tag	UNP A0A0R0IK90
C	-20	MET	-	initiating methionine	UNP A0A0R0IK90
C	-19	GLY	-	expression tag	UNP A0A0R0IK90
C	-18	SER	-	expression tag	UNP A0A0R0IK90
C	-17	SER	-	expression tag	UNP A0A0R0IK90
C	-16	HIS	-	expression tag	UNP A0A0R0IK90
C	-15	HIS	-	expression tag	UNP A0A0R0IK90
C	-14	HIS	-	expression tag	UNP A0A0R0IK90
C	-13	HIS	-	expression tag	UNP A0A0R0IK90
C	-12	HIS	-	expression tag	UNP A0A0R0IK90
C	-11	HIS	-	expression tag	UNP A0A0R0IK90
C	-10	HIS	-	expression tag	UNP A0A0R0IK90
C	-9	SER	-	expression tag	UNP A0A0R0IK90
C	-8	SER	-	expression tag	UNP A0A0R0IK90
C	-7	GLY	-	expression tag	UNP A0A0R0IK90
C	-6	LEU	-	expression tag	UNP A0A0R0IK90
C	-5	VAL	-	expression tag	UNP A0A0R0IK90
C	-4	PRO	-	expression tag	UNP A0A0R0IK90
C	-3	ARG	-	expression tag	UNP A0A0R0IK90
C	-2	GLY	-	expression tag	UNP A0A0R0IK90
C	-1	SER	-	expression tag	UNP A0A0R0IK90
C	0	HIS	-	expression tag	UNP A0A0R0IK90

*Continued on next page...*

Continued from previous page...

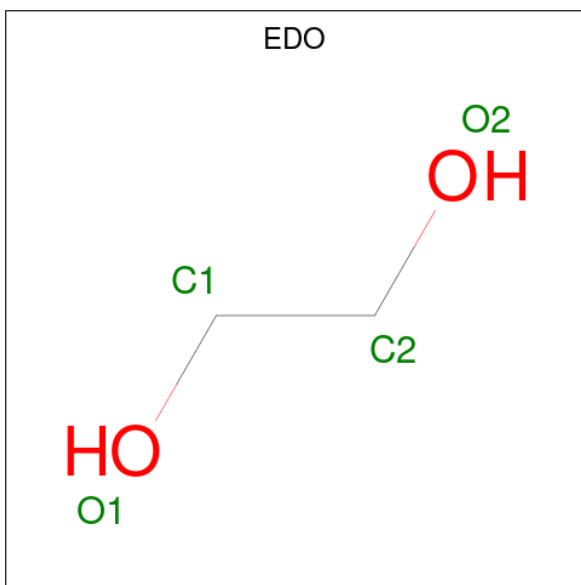
Chain	Residue	Modelled	Actual	Comment	Reference
D	-20	MET	-	initiating methionine	UNP A0A0R0IK90
D	-19	GLY	-	expression tag	UNP A0A0R0IK90
D	-18	SER	-	expression tag	UNP A0A0R0IK90
D	-17	SER	-	expression tag	UNP A0A0R0IK90
D	-16	HIS	-	expression tag	UNP A0A0R0IK90
D	-15	HIS	-	expression tag	UNP A0A0R0IK90
D	-14	HIS	-	expression tag	UNP A0A0R0IK90
D	-13	HIS	-	expression tag	UNP A0A0R0IK90
D	-12	HIS	-	expression tag	UNP A0A0R0IK90
D	-11	HIS	-	expression tag	UNP A0A0R0IK90
D	-10	HIS	-	expression tag	UNP A0A0R0IK90
D	-9	SER	-	expression tag	UNP A0A0R0IK90
D	-8	SER	-	expression tag	UNP A0A0R0IK90
D	-7	GLY	-	expression tag	UNP A0A0R0IK90
D	-6	LEU	-	expression tag	UNP A0A0R0IK90
D	-5	VAL	-	expression tag	UNP A0A0R0IK90
D	-4	PRO	-	expression tag	UNP A0A0R0IK90
D	-3	ARG	-	expression tag	UNP A0A0R0IK90
D	-2	GLY	-	expression tag	UNP A0A0R0IK90
D	-1	SER	-	expression tag	UNP A0A0R0IK90
D	0	HIS	-	expression tag	UNP A0A0R0IK90

- Molecule 2 is N-GLYCINE-[3-HYDROXY-2-METHYL-5-PHOSPHONOXYMETHYL-PYRIDIN-4-YL-METHANE] (three-letter code: PLG) (formula: C<sub>10</sub>H<sub>15</sub>N<sub>2</sub>O<sub>7</sub>P).



Mol	Chain	Residues	Atoms					ZeroOcc	AltConf
			Total	C	N	O	P		
2	A	1	Total 20	C 10	N 2	O 7	P 1	0	0
2	B	1	Total 20	C 10	N 2	O 7	P 1	0	0
2	C	1	Total 20	C 10	N 2	O 7	P 1	0	0
2	D	1	Total 20	C 10	N 2	O 7	P 1	0	0

- Molecule 3 is 1,2-ETHANEDIOL (three-letter code: EDO) (formula: C<sub>2</sub>H<sub>6</sub>O<sub>2</sub>).



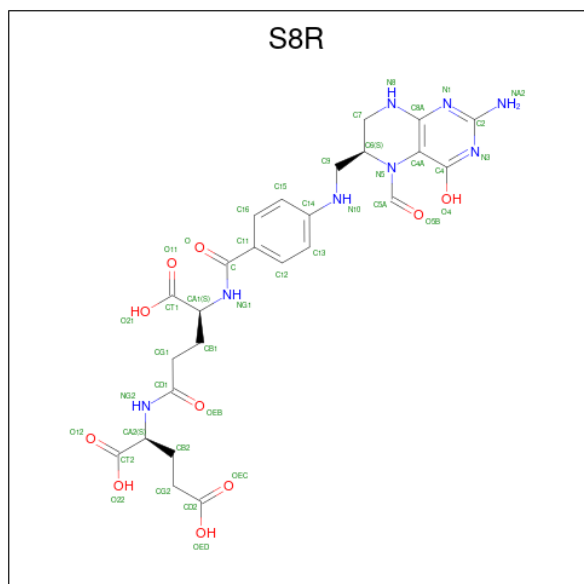
Mol	Chain	Residues	Atoms			ZeroOcc	AltConf
			Total	C	O		
3	A	1	Total 4	C 2	O 2	0	0
3	A	1	Total 4	C 2	O 2	0	0
3	A	1	Total 4	C 2	O 2	0	0
3	A	1	Total 4	C 2	O 2	0	0
3	A	1	Total 4	C 2	O 2	0	0
3	B	1	Total 4	C 2	O 2	0	0
3	B	1	Total 4	C 2	O 2	0	0
3	C	1	Total 4	C 2	O 2	0	0

*Continued on next page...*

Continued from previous page...

Mol	Chain	Residues	Atoms	ZeroOcc	AltConf
3	C	1	Total C O 4 2 2	0	0
3	C	1	Total C O 4 2 2	0	0
3	D	1	Total C O 4 2 2	0	0
3	D	1	Total C O 4 2 2	0	0
3	D	1	Total C O 4 2 2	0	0

- Molecule 4 is N-[4-({[(6R)-2-amino-5-formyl-4-hydroxy-5,6,7,8-tetrahydropteridin-6-yl]methyl}amino)benzoyl]-L-gamma-glutamyl-L-glutamic acid (three-letter code: S8R) (formula: C<sub>25</sub>H<sub>30</sub>N<sub>8</sub>O<sub>10</sub>) (labeled as "Ligand of Interest" by depositor).



Mol	Chain	Residues	Atoms	ZeroOcc	AltConf
4	A	1	Total C N O 86 50 16 20	0	1
4	B	1	Total C N O 86 50 16 20	0	1
4	C	1	Total C N O 86 50 16 20	0	1
4	D	1	Total C N O 86 50 16 20	0	1

- Molecule 5 is water.

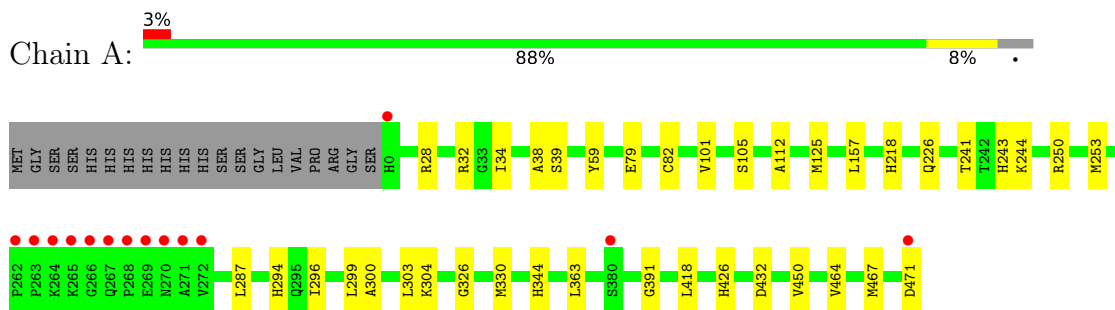
Mol	Chain	Residues	Atoms		ZeroOcc	AltConf
5	A	350	Total 350	O 350	0	0
5	B	372	Total 372	O 372	0	0
5	C	387	Total 387	O 387	0	0
5	D	369	Total 369	O 369	0	0



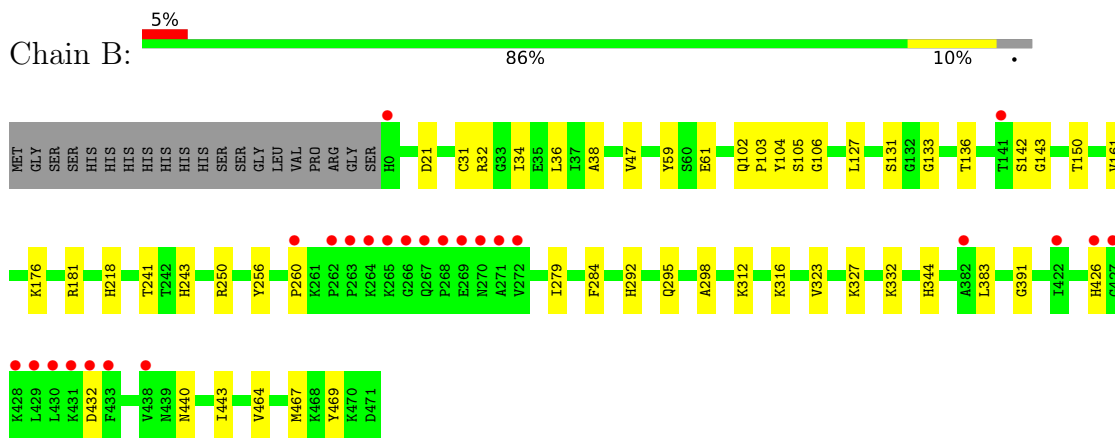
### 3 Residue-property plots [i](#)

These plots are drawn for all protein, RNA, DNA and oligosaccharide chains in the entry. The first graphic for a chain summarises the proportions of the various outlier classes displayed in the second graphic. The second graphic shows the sequence view annotated by issues in geometry and electron density. Residues are color-coded according to the number of geometric quality criteria for which they contain at least one outlier: green = 0, yellow = 1, orange = 2 and red = 3 or more. A red dot above a residue indicates a poor fit to the electron density ( $RSRZ > 2$ ). Stretches of 2 or more consecutive residues without any outlier are shown as a green connector. Residues present in the sample, but not in the model, are shown in grey.

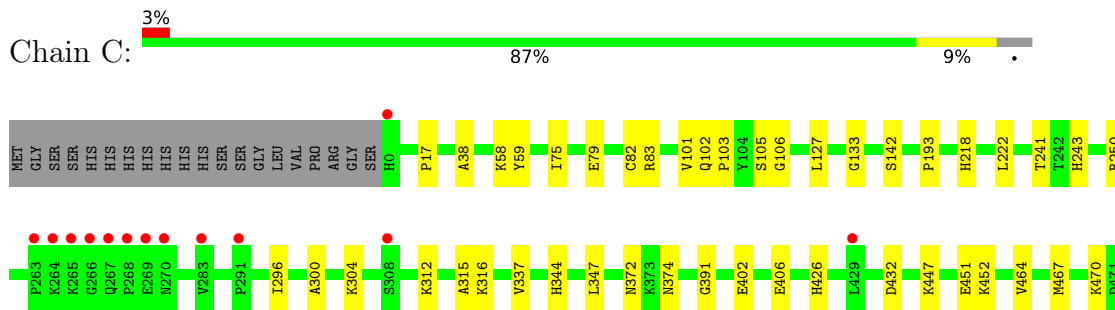
- Molecule 1: Serine hydroxymethyltransferase



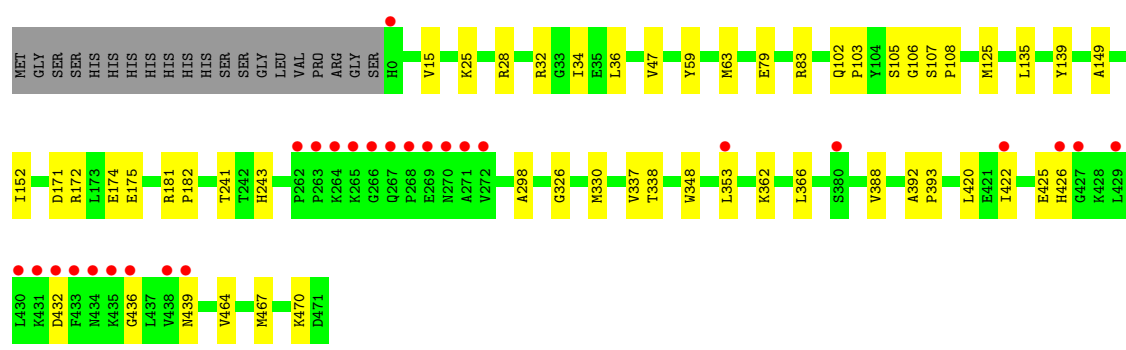
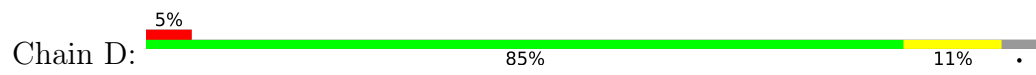
- Molecule 1: Serine hydroxymethyltransferase



- Molecule 1: Serine hydroxymethyltransferase



- Molecule 1: Serine hydroxymethyltransferase



## 4 Data and refinement statistics i

Property	Value	Source
Space group	P 1 21 1	Depositor
Cell constants a, b, c, $\alpha$ , $\beta$ , $\gamma$	86.21Å 89.02Å 146.19Å 90.00° 90.54° 90.00°	Depositor
Resolution (Å)	47.09 – 1.69 47.41 – 1.69	Depositor EDS
% Data completeness (in resolution range)	96.7 (47.09-1.69) 96.7 (47.41-1.69)	Depositor EDS
$R_{merge}$	0.07	Depositor
$R_{sym}$	(Not available)	Depositor
$\langle I/\sigma(I) \rangle$ <sup>1</sup>	1.28 (at 1.69Å)	Xtrriage
Refinement program	PHENIX 1.19.2_4158	Depositor
R, $R_{free}$	0.184 , 0.214 0.188 , 0.216	Depositor DCC
$R_{free}$ test set	11964 reflections (5.01%)	wwPDB-VP
Wilson B-factor (Å <sup>2</sup> )	23.4	Xtrriage
Anisotropy	0.054	Xtrriage
Bulk solvent $k_{sol}$ (e/Å <sup>3</sup> ), $B_{sol}$ (Å <sup>2</sup> )	0.35 , 45.9	EDS
L-test for twinning <sup>2</sup>	$\langle  L  \rangle = 0.49$ , $\langle L^2 \rangle = 0.32$	Xtrriage
Estimated twinning fraction	0.005 for -k,-h,-l 0.009 for k,h,-l 0.019 for h,-k,-l	Xtrriage
$F_o, F_c$ correlation	0.96	EDS
Total number of atoms	16518	wwPDB-VP
Average B, all atoms (Å <sup>2</sup> )	29.0	wwPDB-VP

Xtrriage's analysis on translational NCS is as follows: *The largest off-origin peak in the Patterson function is 13.79% of the height of the origin peak. No significant pseudotranslation is detected.*

<sup>1</sup>Intensities estimated from amplitudes.

<sup>2</sup>Theoretical values of  $\langle |L| \rangle$ ,  $\langle L^2 \rangle$  for acentric reflections are 0.5, 0.333 respectively for untwinned datasets, and 0.375, 0.2 for perfectly twinned datasets.

## 5 Model quality [i](#)

### 5.1 Standard geometry [i](#)

Bond lengths and bond angles in the following residue types are not validated in this section: EDO, PLG, S8R

The Z score for a bond length (or angle) is the number of standard deviations the observed value is removed from the expected value. A bond length (or angle) with  $|Z| > 5$  is considered an outlier worth inspection. RMSZ is the root-mean-square of all Z scores of the bond lengths (or angles).

Mol	Chain	Bond lengths		Bond angles	
		RMSZ	# Z  >5	RMSZ	# Z  >5
1	A	0.38	0/3738	0.60	0/5074
1	B	0.41	0/3756	0.61	0/5088
1	C	0.41	0/3741	0.62	0/5071
1	D	0.39	0/3764	0.62	0/5099
All	All	0.40	0/14999	0.61	0/20332

There are no bond length outliers.

There are no bond angle outliers.

There are no chirality outliers.

There are no planarity outliers.

### 5.2 Too-close contacts [i](#)

In the following table, the Non-H and H(model) columns list the number of non-hydrogen atoms and hydrogen atoms in the chain respectively. The H(added) column lists the number of hydrogen atoms added and optimized by MolProbity. The Clashes column lists the number of clashes within the asymmetric unit, whereas Symm-Clashes lists symmetry-related clashes.

Mol	Chain	Non-H	H(model)	H(added)	Clashes	Symm-Clashes
1	A	3624	0	3522	25	0
1	B	3648	0	3568	32	0
1	C	3636	0	3570	28	0
1	D	3656	0	3594	38	0
2	A	20	0	12	1	0
2	B	20	0	12	1	0
2	C	20	0	12	1	0
2	D	20	0	12	1	0
3	A	20	0	30	1	0

*Continued on next page...*

Continued from previous page...

Mol	Chain	Non-H	H(model)	H(added)	Clashes	Symm-Clashes
3	B	8	0	12	1	0
3	C	12	0	18	0	0
3	D	12	0	18	2	0
4	A	86	0	0	0	0
4	B	86	0	0	1	0
4	C	86	0	0	0	0
4	D	86	0	0	4	0
5	A	350	0	0	3	0
5	B	372	0	0	4	0
5	C	387	0	0	2	0
5	D	369	0	0	11	0
All	All	16518	0	14380	126	0

The all-atom clashscore is defined as the number of clashes found per 1000 atoms (including hydrogen atoms). The all-atom clashscore for this structure is 4.

All (126) close contacts within the same asymmetric unit are listed below, sorted by their clash magnitude.

Atom-1	Atom-2	Interatomic distance (Å)	Clash overlap (Å)
1:B:295[B]:GLN:NE2	5:B:601:HOH:O	2.17	0.77
1:A:253[B]:MET:HE1	1:A:303:LEU:HD11	1.71	0.72
1:B:176:LYS:NZ	5:B:602:HOH:O	2.21	0.72
1:C:58:LYS:HG2	1:C:75:ILE:HG13	1.72	0.71
1:D:174:GLU:OE2	5:D:801:HOH:O	2.11	0.69
1:C:452:LYS:NZ	5:C:601:HOH:O	2.26	0.69
1:B:142:SER:O	1:D:181[A]:ARG:NH1	2.26	0.68
4:D:705[B]:S8R:OEC	5:D:802:HOH:O	2.11	0.68
1:D:362:LYS:O	1:D:366:LEU:HD12	1.92	0.68
1:A:125:MET:HG2	1:A:157:LEU:O	1.97	0.65
1:A:82[B]:CYS:HB3	1:A:300:ALA:HB2	1.80	0.64
1:B:292:HIS:O	1:B:295[B]:GLN:HG2	1.98	0.64
1:A:82[B]:CYS:SG	1:A:101:VAL:HG21	2.38	0.63
3:A:507:EDO:H11	1:C:142:SER:HA	1.81	0.62
1:C:337[B]:VAL:HG22	1:C:347:LEU:HB3	1.81	0.62
1:C:82[B]:CYS:HB3	1:C:300:ALA:HB2	1.80	0.61
1:A:253[B]:MET:CE	1:A:303:LEU:HD11	2.29	0.61
1:C:82[B]:CYS:SG	1:C:101:VAL:HG21	2.40	0.60
1:D:25:LYS:NZ	5:D:807:HOH:O	2.25	0.60
1:D:464:VAL:O	1:D:467:MET:HG2	2.03	0.59
1:D:464:VAL:HG22	5:D:1008:HOH:O	2.03	0.58
1:D:79:GLU:O	1:D:83:ARG:HG3	2.04	0.57

Continued on next page...

*Continued from previous page...*

Atom-1	Atom-2	Interatomic distance (Å)	Clash overlap (Å)
1:D:353:LEU:HD12	1:D:420:LEU:HD11	1.87	0.57
1:D:125:MET:HG3	1:D:182:PRO:HB3	1.86	0.57
1:B:464:VAL:O	1:B:467:MET:HG2	2.04	0.56
1:D:171:ASP:O	1:D:175:GLU:HG3	2.05	0.56
1:D:426:HIS:O	1:D:432:ASP:HB3	2.07	0.55
1:D:181[C]:ARG:HB2	3:D:701:EDO:H12	1.90	0.54
1:B:181:ARG:HB2	3:B:504:EDO:H21	1.90	0.53
1:D:172:ARG:HG3	1:D:172:ARG:HH11	1.73	0.53
1:B:323:VAL:O	1:B:327:LYS:HG2	2.09	0.53
1:D:337:VAL:HG12	1:D:338:THR:HG23	1.90	0.53
1:B:104:TYR:HA	1:B:295[B]:GLN:HE22	1.74	0.52
1:B:143:GLY:CA	1:D:181[A]:ARG:HH12	2.23	0.52
1:C:337[B]:VAL:CG2	1:C:347:LEU:HB3	2.40	0.52
1:B:143:GLY:HA2	1:D:181[A]:ARG:HH12	1.74	0.52
5:A:615:HOH:O	2:B:501:PLG:H4A1	2.10	0.51
1:D:348:TRP:HB3	1:D:388:VAL:HG12	1.93	0.51
1:D:34:ILE:HG22	1:D:36:LEU:HG	1.92	0.51
1:B:426:HIS:O	1:B:432:ASP:HB3	2.11	0.51
2:C:501:PLG:H4A1	5:D:821:HOH:O	2.11	0.50
1:A:34:ILE:HG13	1:A:450:VAL:HG13	1.92	0.50
1:A:253[B]:MET:HE3	1:A:299:LEU:HD11	1.94	0.49
1:C:447:LYS:O	1:C:451:GLU:HG3	2.12	0.49
1:C:312:LYS:HG2	1:C:316:LYS:NZ	2.27	0.49
4:D:705[B]:S8R:O22	5:D:803:HOH:O	2.19	0.49
4:D:705[B]:S8R:OED	5:D:804:HOH:O	2.19	0.49
1:D:422:ILE:HG23	1:D:436:GLY:HA3	1.95	0.49
1:B:256:TYR:HB3	1:B:279[A]:ILE:HD12	1.95	0.49
1:C:218:HIS:HB3	1:C:344:HIS:CE1	2.47	0.49
1:C:464:VAL:O	1:C:467:MET:HG2	2.12	0.49
1:B:440:ASN:HB3	1:B:443:ILE:HD12	1.94	0.49
1:A:464:VAL:O	1:A:467:MET:HG2	2.13	0.48
1:C:426:HIS:O	1:C:432:ASP:HB3	2.14	0.48
1:D:106:GLY:HA3	1:D:241:THR:HG22	1.96	0.48
1:D:28:ARG:HG3	1:D:467:MET:HE3	1.95	0.48
1:C:82[B]:CYS:SG	1:C:296:ILE:HG23	2.55	0.47
1:C:79:GLU:HA	1:C:82[B]:CYS:SG	2.54	0.47
1:A:82[B]:CYS:SG	1:A:296:ILE:HG23	2.55	0.47
2:A:501:PLG:H4A1	5:B:615:HOH:O	2.15	0.47
1:C:372:ASN:HD21	1:C:374:ASN:HD22	1.62	0.47
1:A:28:ARG:HH22	1:A:471:ASP:HB3	1.79	0.47
1:C:38:ALA:HA	1:C:391:GLY:HA3	1.96	0.47

*Continued on next page...*

*Continued from previous page...*

Atom-1	Atom-2	Interatomic distance (Å)	Clash overlap (Å)
1:D:107:SER:HB2	1:D:108:PRO:HD3	1.97	0.46
1:A:38:ALA:HA	1:A:391:GLY:HA3	1.97	0.46
1:B:136:THR:O	1:B:150:THR:HG21	2.14	0.46
1:D:181[A]:ARG:HB2	3:D:701:EDO:H12	1.97	0.46
1:A:243:HIS:ND1	1:A:250:ARG:HA	2.31	0.46
1:C:193:PRO:HG3	1:C:337[B]:VAL:HG23	1.98	0.46
1:C:304:LYS:HE2	1:D:15:VAL:O	2.16	0.46
1:A:326:GLY:O	1:A:330:MET:HG3	2.16	0.45
1:B:332:LYS:HD2	1:B:332:LYS:HA	1.72	0.45
1:D:106:GLY:CA	1:D:241:THR:HG22	2.46	0.45
1:D:149:ALA:HA	1:D:152:ILE:HD12	1.97	0.45
1:C:222:LEU:HD23	1:C:315:ALA:HB1	1.98	0.45
1:B:34:ILE:HG22	1:B:36:LEU:HG	1.98	0.45
1:A:241:THR:HB	1:A:243:HIS:CE1	2.51	0.44
1:A:79:GLU:HA	1:A:82[B]:CYS:SG	2.57	0.44
1:D:467:MET:HB2	5:D:975:HOH:O	2.16	0.44
1:B:243:HIS:ND1	1:B:250:ARG:HA	2.33	0.44
1:C:243:HIS:ND1	1:C:250:ARG:HA	2.33	0.44
1:D:241:THR:HB	1:D:243:HIS:CE1	2.53	0.44
1:A:218:HIS:HB3	1:A:344:HIS:CE1	2.52	0.44
1:B:312:LYS:O	1:B:316:LYS:HG3	2.17	0.44
1:C:241:THR:HB	1:C:243:HIS:CE1	2.52	0.43
1:D:425:GLU:O	5:D:805:HOH:O	2.21	0.43
1:B:47:VAL:HG13	1:B:298:ALA:HB1	2.01	0.43
1:B:295[B]:GLN:NE2	5:B:619:HOH:O	2.49	0.43
4:D:705[A]:S8R:O22	5:D:803:HOH:O	2.21	0.43
1:B:142:SER:O	1:D:181[C]:ARG:NH2	2.52	0.43
1:B:131:SER:HB3	1:B:161:VAL:HG13	2.00	0.43
1:D:135:LEU:HD23	1:D:139:TYR:HD2	1.83	0.43
1:B:21:ASP:OD1	1:B:469:TYR:OH	2.17	0.43
1:B:31:CYS:O	1:B:32:ARG:HD3	2.18	0.43
1:C:106:GLY:CA	1:C:241:THR:HG22	2.49	0.43
1:A:32:ARG:HD3	1:A:32:ARG:HA	1.79	0.42
1:C:102:GLN:N	1:C:103:PRO:CD	2.82	0.42
1:B:218:HIS:HB3	1:B:344:HIS:CE1	2.55	0.42
1:D:47:VAL:HG13	1:D:298:ALA:HB1	2.01	0.42
1:A:304:LYS:NZ	5:A:626:HOH:O	2.53	0.42
1:C:79:GLU:O	1:C:83:ARG:HG3	2.19	0.42
1:D:102:GLN:N	1:D:103:PRO:CD	2.83	0.42
1:B:61:GLU:HB3	1:B:284:PHE:CZ	2.54	0.42
1:C:127:LEU:O	1:C:133:GLY:HA3	2.19	0.42

*Continued on next page...*

Continued from previous page...

Atom-1	Atom-2	Interatomic distance (Å)	Clash overlap (Å)
1:C:402:GLU:O	1:C:406:GLU:HG3	2.20	0.42
1:A:363:LEU:HD11	1:A:418:LEU:HG	2.02	0.42
1:D:326:GLY:O	1:D:330:MET:HG3	2.20	0.42
1:D:392:ALA:N	1:D:393:PRO:CD	2.83	0.41
1:A:294:HIS:H	1:A:294:HIS:HD1	1.68	0.41
1:B:106:GLY:CA	1:B:241:THR:HG22	2.50	0.41
1:D:181[A]:ARG:NH2	5:D:832:HOH:O	2.53	0.41
1:A:253[B]:MET:CE	1:A:299:LEU:HD21	2.51	0.41
1:B:38:ALA:HA	1:B:391:GLY:HA3	2.02	0.41
1:B:102:GLN:N	1:B:103:PRO:CD	2.84	0.41
1:D:28:ARG:CZ	1:D:32:ARG:HG3	2.51	0.41
1:C:106:GLY:HA3	1:C:241:THR:HG22	2.03	0.41
1:B:383:LEU:HD12	4:B:502[B]:S8R:CD2	2.51	0.41
1:A:226:GLN:NE2	5:A:620:HOH:O	2.50	0.40
1:B:127:LEU:O	1:B:133:GLY:HA3	2.21	0.40
1:A:39:SER:HB2	1:A:244:LYS:HE3	2.02	0.40
1:B:241:THR:HB	1:B:243:HIS:CE1	2.56	0.40
1:C:17:PRO:HG3	5:C:813:HOH:O	2.22	0.40
2:D:703:PLG:N	2:D:703:PLG:O3	2.54	0.40
1:D:135:LEU:HD23	1:D:139:TYR:CD2	2.57	0.40
1:A:112:ALA:HA	1:A:287:LEU:HD12	2.03	0.40
1:A:426:HIS:O	1:A:432:ASP:HB3	2.22	0.40

There are no symmetry-related clashes.

## 5.3 Torsion angles [i](#)

### 5.3.1 Protein backbone [i](#)

In the following table, the Percentiles column shows the percent Ramachandran outliers of the chain as a percentile score with respect to all X-ray entries followed by that with respect to entries of similar resolution.

The Analysed column shows the number of residues for which the backbone conformation was analysed, and the total number of residues.

Mol	Chain	Analysed	Favoured	Allowed	Outliers	Percentiles	
1	A	480/492 (98%)	469 (98%)	11 (2%)	0	100	100
1	B	478/492 (97%)	465 (97%)	13 (3%)	0	100	100
1	C	477/492 (97%)	464 (97%)	13 (3%)	0	100	100

Continued on next page...



Continued from previous page...

Mol	Chain	Analysed	Favoured	Allowed	Outliers	Percentiles	
1	D	479/492 (97%)	466 (97%)	13 (3%)	0	100	100
All	All	1914/1968 (97%)	1864 (97%)	50 (3%)	0	100	100

There are no Ramachandran outliers to report.

### 5.3.2 Protein sidechains [i](#)

In the following table, the Percentiles column shows the percent sidechain outliers of the chain as a percentile score with respect to all X-ray entries followed by that with respect to entries of similar resolution.

The Analysed column shows the number of residues for which the sidechain conformation was analysed, and the total number of residues.

Mol	Chain	Analysed	Rotameric	Outliers	Percentiles	
1	A	377/403 (94%)	375 (100%)	2 (0%)	88	83
1	B	382/403 (95%)	379 (99%)	3 (1%)	81	74
1	C	381/403 (94%)	378 (99%)	3 (1%)	81	74
1	D	382/403 (95%)	376 (98%)	6 (2%)	62	48
All	All	1522/1612 (94%)	1508 (99%)	14 (1%)	78	70

All (14) residues with a non-rotameric sidechain are listed below:

Mol	Chain	Res	Type
1	A	59	TYR
1	A	105	SER
1	B	59	TYR
1	B	105	SER
1	B	260	PRO
1	C	59	TYR
1	C	105	SER
1	C	470	LYS
1	D	59	TYR
1	D	63[A]	MET
1	D	63[B]	MET
1	D	105	SER
1	D	439	ASN
1	D	470	LYS

Sometimes sidechains can be flipped to improve hydrogen bonding and reduce clashes. All (1) such

sidechains are listed below:

Mol	Chain	Res	Type
1	C	374	ASN

### 5.3.3 RNA [i](#)

There are no RNA molecules in this entry.

### 5.4 Non-standard residues in protein, DNA, RNA chains [i](#)

There are no non-standard protein/DNA/RNA residues in this entry.

### 5.5 Carbohydrates [i](#)

There are no monosaccharides in this entry.

### 5.6 Ligand geometry [i](#)

25 ligands are modelled in this entry.

In the following table, the Counts columns list the number of bonds (or angles) for which Mogul statistics could be retrieved, the number of bonds (or angles) that are observed in the model and the number of bonds (or angles) that are defined in the Chemical Component Dictionary. The Link column lists molecule types, if any, to which the group is linked. The Z score for a bond length (or angle) is the number of standard deviations the observed value is removed from the expected value. A bond length (or angle) with  $|Z| > 2$  is considered an outlier worth inspection. RMSZ is the root-mean-square of all Z scores of the bond lengths (or angles).

Mol	Type	Chain	Res	Link	Bond lengths			Bond angles		
					Counts	RMSZ	# $ Z  > 2$	Counts	RMSZ	# $ Z  > 2$
4	S8R	D	705[A]	-	42,45,45	2.20	9 (21%)	48,62,62	1.39	7 (14%)
3	EDO	C	504	-	3,3,3	0.44	0	2,2,2	0.46	0
2	PLG	D	703	-	20,20,20	1.19	1 (5%)	25,28,28	1.65	6 (24%)
3	EDO	B	504	-	3,3,3	0.50	0	2,2,2	0.41	0
4	S8R	D	705[B]	-	42,45,45	2.26	9 (21%)	48,62,62	1.32	6 (12%)
3	EDO	A	502	-	3,3,3	0.59	0	2,2,2	0.13	0
3	EDO	A	506	-	3,3,3	0.41	0	2,2,2	0.58	0
3	EDO	A	505	-	3,3,3	0.52	0	2,2,2	0.16	0
3	EDO	A	507	-	3,3,3	0.48	0	2,2,2	0.46	0
4	S8R	C	505[A]	-	42,45,45	2.18	9 (21%)	48,62,62	1.36	5 (10%)
2	PLG	B	501	-	20,20,20	1.19	2 (10%)	25,28,28	1.60	5 (20%)

Mol	Type	Chain	Res	Link	Bond lengths			Bond angles		
					Counts	RMSZ	# Z  > 2	Counts	RMSZ	# Z  > 2
2	PLG	C	501	-	20,20,20	1.16	1 (5%)	25,28,28	1.76	7 (28%)
3	EDO	D	704	-	3,3,3	0.41	0	2,2,2	0.61	0
4	S8R	C	505[B]	-	42,45,45	2.10	6 (14%)	48,62,62	1.41	6 (12%)
3	EDO	B	503	-	3,3,3	0.51	0	2,2,2	0.19	0
2	PLG	A	501	-	20,20,20	1.44	3 (15%)	25,28,28	1.61	6 (24%)
3	EDO	D	702	-	3,3,3	0.46	0	2,2,2	0.47	0
3	EDO	C	502	-	3,3,3	0.45	0	2,2,2	0.30	0
4	S8R	B	502[A]	-	42,45,45	2.26	9 (21%)	48,62,62	1.27	5 (10%)
4	S8R	A	504[A]	-	42,45,45	2.26	9 (21%)	48,62,62	1.32	6 (12%)
4	S8R	B	502[B]	-	42,45,45	2.23	8 (19%)	48,62,62	1.26	6 (12%)
4	S8R	A	504[B]	-	42,45,45	2.17	7 (16%)	48,62,62	1.42	8 (16%)
3	EDO	D	701	-	3,3,3	0.46	0	2,2,2	0.61	0
3	EDO	A	503	-	3,3,3	0.44	0	2,2,2	0.52	0
3	EDO	C	503	-	3,3,3	0.56	0	2,2,2	0.24	0

In the following table, the Chirals column lists the number of chiral outliers, the number of chiral centers analysed, the number of these observed in the model and the number defined in the Chemical Component Dictionary. Similar counts are reported in the Torsion and Rings columns. '-' means no outliers of that kind were identified.

Mol	Type	Chain	Res	Link	Chirals	Torsions	Rings
4	S8R	D	705[A]	-	-	4/37/50/50	0/2/3/3
3	EDO	C	504	-	-	1/1/1/1	-
2	PLG	D	703	-	-	2/12/12/12	0/1/1/1
3	EDO	B	504	-	-	1/1/1/1	-
4	S8R	D	705[B]	-	-	4/37/50/50	0/2/3/3
3	EDO	A	502	-	-	0/1/1/1	-
3	EDO	A	506	-	-	0/1/1/1	-
3	EDO	A	505	-	-	0/1/1/1	-
3	EDO	A	507	-	-	0/1/1/1	-
4	S8R	C	505[A]	-	-	2/37/50/50	0/2/3/3
2	PLG	B	501	-	-	2/12/12/12	0/1/1/1
2	PLG	C	501	-	-	3/12/12/12	0/1/1/1
3	EDO	D	704	-	-	0/1/1/1	-
4	S8R	C	505[B]	-	-	1/37/50/50	0/2/3/3
3	EDO	B	503	-	-	0/1/1/1	-
2	PLG	A	501	-	-	4/12/12/12	0/1/1/1
3	EDO	D	702	-	-	1/1/1/1	-
3	EDO	C	502	-	-	0/1/1/1	-

Continued on next page...

Continued from previous page...

Mol	Type	Chain	Res	Link	Chirals	Torsions	Rings
4	S8R	B	502[A]	-	-	2/37/50/50	0/2/3/3
4	S8R	A	504[A]	-	-	2/37/50/50	0/2/3/3
4	S8R	B	502[B]	-	-	4/37/50/50	0/2/3/3
4	S8R	A	504[B]	-	-	1/37/50/50	0/2/3/3
3	EDO	D	701	-	-	1/1/1/1	-
3	EDO	A	503	-	-	1/1/1/1	-
3	EDO	C	503	-	-	0/1/1/1	-

All (73) bond length outliers are listed below:

Mol	Chain	Res	Type	Atoms	Z	Observed(Å)	Ideal(Å)
4	A	504[A]	S8R	C5A-N5	7.53	1.45	1.35
4	D	705[B]	S8R	C5A-N5	7.40	1.45	1.35
4	B	502[A]	S8R	C5A-N5	7.40	1.45	1.35
4	D	705[A]	S8R	C5A-N5	7.22	1.45	1.35
4	B	502[B]	S8R	C5A-N5	7.10	1.45	1.35
4	A	504[B]	S8R	C5A-N5	7.07	1.45	1.35
4	C	505[A]	S8R	C5A-N5	7.07	1.45	1.35
4	C	505[B]	S8R	C5A-N5	6.63	1.44	1.35
4	B	502[B]	S8R	C2-NA2	6.00	1.45	1.33
4	B	502[A]	S8R	C2-NA2	5.91	1.45	1.33
4	D	705[B]	S8R	C2-NA2	5.87	1.45	1.33
4	A	504[A]	S8R	C2-NA2	5.86	1.45	1.33
4	A	504[B]	S8R	C2-NA2	5.78	1.45	1.33
4	C	505[A]	S8R	C2-NA2	5.76	1.45	1.33
4	D	705[A]	S8R	C2-NA2	5.71	1.45	1.33
4	D	705[B]	S8R	CD1-NG2	5.61	1.46	1.34
4	B	502[A]	S8R	CD1-NG2	5.60	1.46	1.34
4	C	505[B]	S8R	C2-NA2	5.57	1.45	1.33
4	B	502[B]	S8R	CD1-NG2	5.53	1.45	1.34
4	A	504[A]	S8R	CD1-NG2	5.51	1.45	1.34
4	D	705[A]	S8R	CD1-NG2	5.46	1.45	1.34
4	C	505[A]	S8R	CD1-NG2	5.45	1.45	1.34
4	A	504[B]	S8R	CD1-NG2	5.40	1.45	1.34
4	C	505[B]	S8R	CD1-NG2	5.31	1.45	1.34
4	D	705[B]	S8R	C4A-N5	5.16	1.46	1.40
4	B	502[A]	S8R	C-NG1	5.16	1.45	1.34
4	B	502[B]	S8R	C-NG1	5.16	1.45	1.34
4	B	502[A]	S8R	C4A-N5	5.05	1.46	1.40
4	D	705[B]	S8R	C-NG1	5.04	1.45	1.34
4	A	504[A]	S8R	C-NG1	5.03	1.45	1.34
4	A	504[A]	S8R	C4A-N5	5.00	1.46	1.40

Continued on next page...

*Continued from previous page...*

Mol	Chain	Res	Type	Atoms	Z	Observed(Å)	Ideal(Å)
4	C	505[A]	S8R	C-NG1	4.96	1.45	1.34
4	D	705[A]	S8R	C-NG1	4.89	1.44	1.34
4	A	504[B]	S8R	C-NG1	4.76	1.44	1.34
4	B	502[B]	S8R	C4A-N5	4.75	1.46	1.40
4	D	705[A]	S8R	C4A-N5	4.71	1.46	1.40
4	C	505[B]	S8R	C-NG1	4.66	1.44	1.34
4	A	504[B]	S8R	C4A-N5	4.53	1.45	1.40
4	C	505[A]	S8R	C4A-N5	4.52	1.45	1.40
4	C	505[B]	S8R	C4A-N5	4.43	1.45	1.40
2	A	501	PLG	C5-C4	-3.83	1.35	1.40
2	C	501	PLG	C5-C4	-2.73	1.36	1.40
4	C	505[B]	S8R	O-C	-2.62	1.18	1.23
4	A	504[B]	S8R	O-C	-2.50	1.18	1.23
2	D	703	PLG	C5-C4	-2.39	1.37	1.40
4	C	505[A]	S8R	O-C	-2.38	1.18	1.23
4	B	502[A]	S8R	O4-C4	2.33	1.40	1.29
4	A	504[A]	S8R	O-C	-2.32	1.18	1.23
4	D	705[B]	S8R	O4-C4	2.27	1.40	1.29
4	B	502[B]	S8R	O4-C4	2.26	1.40	1.29
4	B	502[A]	S8R	O-C	-2.26	1.18	1.23
4	B	502[B]	S8R	C14-N10	2.25	1.45	1.38
4	D	705[A]	S8R	C14-N10	2.25	1.45	1.38
4	B	502[B]	S8R	O-C	-2.25	1.18	1.23
4	A	504[A]	S8R	O4-C4	2.24	1.39	1.29
4	D	705[A]	S8R	O-C	-2.22	1.18	1.23
4	D	705[B]	S8R	C14-N10	2.22	1.45	1.38
4	D	705[B]	S8R	O-C	-2.20	1.18	1.23
4	B	502[A]	S8R	C14-N10	2.16	1.45	1.38
4	D	705[A]	S8R	OEB-CD1	-2.16	1.18	1.23
4	C	505[A]	S8R	O4-C4	2.15	1.39	1.29
2	A	501	PLG	C2A-C2	2.15	1.54	1.50
4	D	705[B]	S8R	OEB-CD1	-2.15	1.18	1.23
4	A	504[A]	S8R	C14-N10	2.12	1.44	1.38
2	B	501	PLG	C5-C4	-2.11	1.37	1.40
4	C	505[A]	S8R	C14-N10	2.10	1.44	1.38
4	D	705[A]	S8R	O4-C4	2.09	1.39	1.29
2	A	501	PLG	C3-C4	-2.09	1.36	1.40
4	A	504[B]	S8R	O4-C4	2.08	1.39	1.29
4	A	504[A]	S8R	OEB-CD1	-2.07	1.19	1.23
2	B	501	PLG	C2A-C2	2.06	1.53	1.50
4	C	505[A]	S8R	OEB-CD1	-2.05	1.19	1.23
4	B	502[A]	S8R	OEB-CD1	-2.02	1.19	1.23

All (73) bond angle outliers are listed below:

Mol	Chain	Res	Type	Atoms	Z	Observed(°)	Ideal(°)
4	D	705[A]	S8R	O5B-C5A-N5	-4.36	119.04	125.36
2	B	501	PLG	C6-C5-C4	4.32	121.18	118.12
2	C	501	PLG	OP4-C5A-C5	3.88	116.74	109.35
2	D	703	PLG	OP4-C5A-C5	3.68	116.36	109.35
4	A	504[B]	S8R	O5B-C5A-N5	-3.55	120.21	125.36
4	C	505[A]	S8R	O5B-C5A-N5	-3.37	120.48	125.36
2	D	703	PLG	C4A-C4-C3	3.36	123.64	120.04
4	D	705[B]	S8R	O5B-C5A-N5	-3.27	120.63	125.36
2	A	501	PLG	C6-C5-C4	3.22	120.40	118.12
2	C	501	PLG	C4A-C4-C3	3.19	123.46	120.04
2	D	703	PLG	C6-C5-C4	3.13	120.33	118.12
4	C	505[B]	S8R	O5B-C5A-N5	-3.12	120.84	125.36
2	B	501	PLG	C4A-C4-C3	3.12	123.39	120.04
4	A	504[B]	S8R	C2-N1-C8A	3.07	121.42	114.54
4	B	502[A]	S8R	O5B-C5A-N5	-3.07	120.92	125.36
2	A	501	PLG	OP4-C5A-C5	3.01	115.08	109.35
4	B	502[B]	S8R	O5B-C5A-N5	-2.92	121.13	125.36
2	A	501	PLG	C4A-C4-C3	2.88	123.13	120.04
4	A	504[A]	S8R	C2-N1-C8A	2.86	120.94	114.54
2	B	501	PLG	C5-C6-N1	-2.84	119.09	123.82
4	C	505[B]	S8R	C2-N1-C8A	2.83	120.88	114.54
4	C	505[B]	S8R	N3-C2-N1	-2.82	121.00	125.42
2	A	501	PLG	C4A-N-CA	-2.77	109.69	112.58
4	C	505[A]	S8R	C2-N1-C8A	2.75	120.71	114.54
4	B	502[A]	S8R	C2-N1-C8A	2.70	120.59	114.54
4	D	705[B]	S8R	C2-N1-C8A	2.67	120.53	114.54
4	A	504[B]	S8R	N3-C2-N1	-2.65	121.26	125.42
4	B	502[B]	S8R	C2-N1-C8A	2.64	120.45	114.54
2	A	501	PLG	C5-C6-N1	-2.62	119.45	123.82
4	D	705[A]	S8R	N3-C2-N1	-2.57	121.38	125.42
4	B	502[B]	S8R	N3-C2-N1	-2.57	121.39	125.42
4	A	504[A]	S8R	N3-C2-N1	-2.56	121.41	125.42
2	C	501	PLG	OXT-C-CA	2.55	121.59	112.74
4	D	705[B]	S8R	N3-C2-N1	-2.53	121.45	125.42
2	C	501	PLG	C4A-N-CA	-2.53	109.95	112.58
2	C	501	PLG	C4A-C4-C5	-2.50	116.93	119.71
4	D	705[A]	S8R	C2-N1-C8A	2.48	120.10	114.54
2	C	501	PLG	C6-C5-C4	2.48	119.87	118.12
4	C	505[A]	S8R	N3-C2-N1	-2.47	121.54	125.42
4	B	502[A]	S8R	N3-C2-N1	-2.46	121.56	125.42
4	A	504[A]	S8R	O5B-C5A-N5	-2.41	121.87	125.36
2	B	501	PLG	OP4-C5A-C5	2.41	113.94	109.35

Continued on next page...

Continued from previous page...

Mol	Chain	Res	Type	Atoms	Z	Observed(°)	Ideal(°)
2	A	501	PLG	C4A-C4-C5	-2.37	117.08	119.71
2	D	703	PLG	OXT-C-CA	2.36	120.94	112.74
4	D	705[A]	S8R	CG1-CD1-NG2	2.28	119.79	115.83
2	D	703	PLG	C5-C6-N1	-2.28	120.03	123.82
4	B	502[B]	S8R	C2-N3-C4	2.25	122.10	116.43
2	C	501	PLG	C5-C6-N1	-2.24	120.09	123.82
4	A	504[A]	S8R	CG1-CD1-NG2	2.22	119.68	115.83
4	D	705[A]	S8R	O22-CT2-CA2	2.19	120.69	113.40
4	C	505[A]	S8R	CG1-CD1-NG2	2.18	119.62	115.83
4	C	505[B]	S8R	C6-C9-N10	-2.17	106.58	112.23
4	B	502[B]	S8R	OED-CD2-CG2	2.17	120.99	114.03
4	D	705[A]	S8R	C2-N3-C4	2.16	121.89	116.43
4	A	504[B]	S8R	O22-CT2-CA2	2.16	120.59	113.40
4	A	504[B]	S8R	CG1-CD1-NG2	2.16	119.57	115.83
4	D	705[B]	S8R	CG1-CD1-NG2	2.14	119.55	115.83
4	A	504[A]	S8R	O22-CT2-CA2	2.12	120.46	113.40
4	C	505[B]	S8R	OED-CD2-CG2	2.11	120.81	114.03
4	D	705[A]	S8R	O21-CT1-CA1	2.06	120.25	113.40
4	A	504[B]	S8R	OEB-CD1-NG2	-2.06	119.48	122.95
4	B	502[A]	S8R	C2-N3-C4	2.05	121.61	116.43
4	A	504[B]	S8R	C15-C14-C13	2.05	121.83	119.03
4	B	502[A]	S8R	O21-CT1-CA1	2.04	120.19	113.40
4	C	505[A]	S8R	OED-CD2-CG2	2.04	120.58	114.03
4	A	504[B]	S8R	O22-CT2-O12	-2.04	119.46	124.09
4	D	705[B]	S8R	O21-CT1-CA1	2.04	120.17	113.40
4	D	705[B]	S8R	C2-N3-C4	2.03	121.56	116.43
2	D	703	PLG	OP3-P-OP4	2.03	112.14	106.73
4	B	502[B]	S8R	O21-CT1-CA1	2.03	120.14	113.40
4	A	504[A]	S8R	O21-CT1-CA1	2.02	120.10	113.40
4	C	505[B]	S8R	C16-C11-C12	2.01	121.45	118.59
2	B	501	PLG	OP2-P-OP4	2.00	112.06	106.73

There are no chirality outliers.

All (36) torsion outliers are listed below:

Mol	Chain	Res	Type	Atoms
2	B	501	PLG	C3-C4-C4A-N
2	B	501	PLG	C5-C4-C4A-N
2	C	501	PLG	C3-C4-C4A-N
2	C	501	PLG	C5-C4-C4A-N
2	D	703	PLG	C3-C4-C4A-N
2	D	703	PLG	C5-C4-C4A-N

Continued on next page...

*Continued from previous page...*

Mol	Chain	Res	Type	Atoms
2	A	501	PLG	C5-C4-C4A-N
4	B	502[A]	S8R	C13-C14-N10-C9
4	D	705[B]	S8R	NG2-CA2-CB2-CG2
4	D	705[B]	S8R	C13-C14-N10-C9
4	B	502[A]	S8R	C15-C14-N10-C9
4	D	705[B]	S8R	C15-C14-N10-C9
4	D	705[B]	S8R	CT2-CA2-CB2-CG2
3	D	701	EDO	O1-C1-C2-O2
4	C	505[A]	S8R	C13-C14-N10-C9
4	A	504[A]	S8R	C13-C14-N10-C9
2	A	501	PLG	C3-C4-C4A-N
4	B	502[B]	S8R	C13-C14-N10-C9
2	A	501	PLG	C5A-OP4-P-OP1
4	C	505[A]	S8R	C15-C14-N10-C9
4	A	504[A]	S8R	C15-C14-N10-C9
4	B	502[B]	S8R	C15-C14-N10-C9
3	A	503	EDO	O1-C1-C2-O2
2	C	501	PLG	C5A-OP4-P-OP3
3	C	504	EDO	O1-C1-C2-O2
4	D	705[A]	S8R	C13-C14-N10-C9
4	D	705[A]	S8R	C15-C14-N10-C9
4	C	505[B]	S8R	C13-C14-N10-C9
4	B	502[B]	S8R	OED-CD2-CG2-CB2
2	A	501	PLG	C5A-OP4-P-OP2
3	D	702	EDO	O1-C1-C2-O2
4	D	705[A]	S8R	OED-CD2-CG2-CB2
4	B	502[B]	S8R	OEC-CD2-CG2-CB2
4	D	705[A]	S8R	OEC-CD2-CG2-CB2
4	A	504[B]	S8R	C13-C14-N10-C9
3	B	504	EDO	O1-C1-C2-O2

There are no ring outliers.

10 monomers are involved in 13 short contacts:

Mol	Chain	Res	Type	Clashes	Symm-Clashes
4	D	705[A]	S8R	1	0
2	D	703	PLG	1	0
3	B	504	EDO	1	0
4	D	705[B]	S8R	3	0
3	A	507	EDO	1	0
2	B	501	PLG	1	0
2	C	501	PLG	1	0

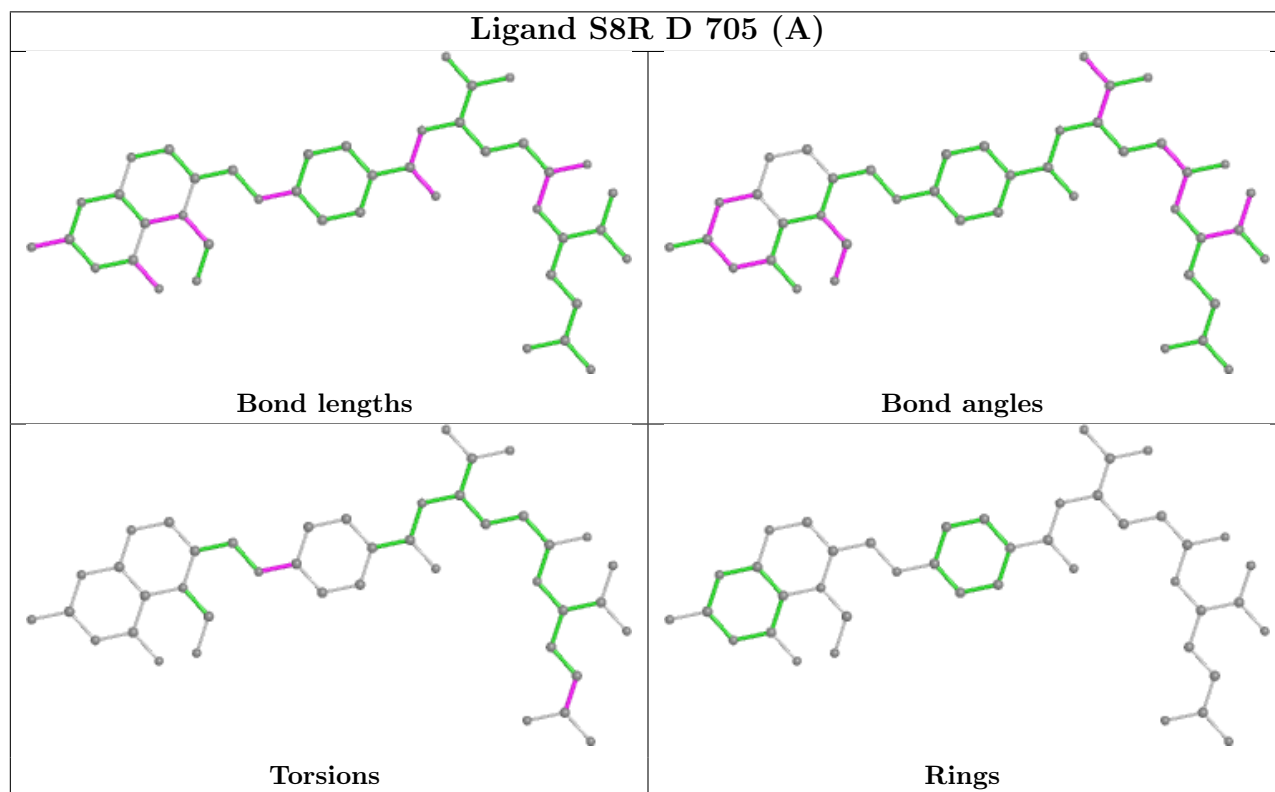
*Continued on next page...*

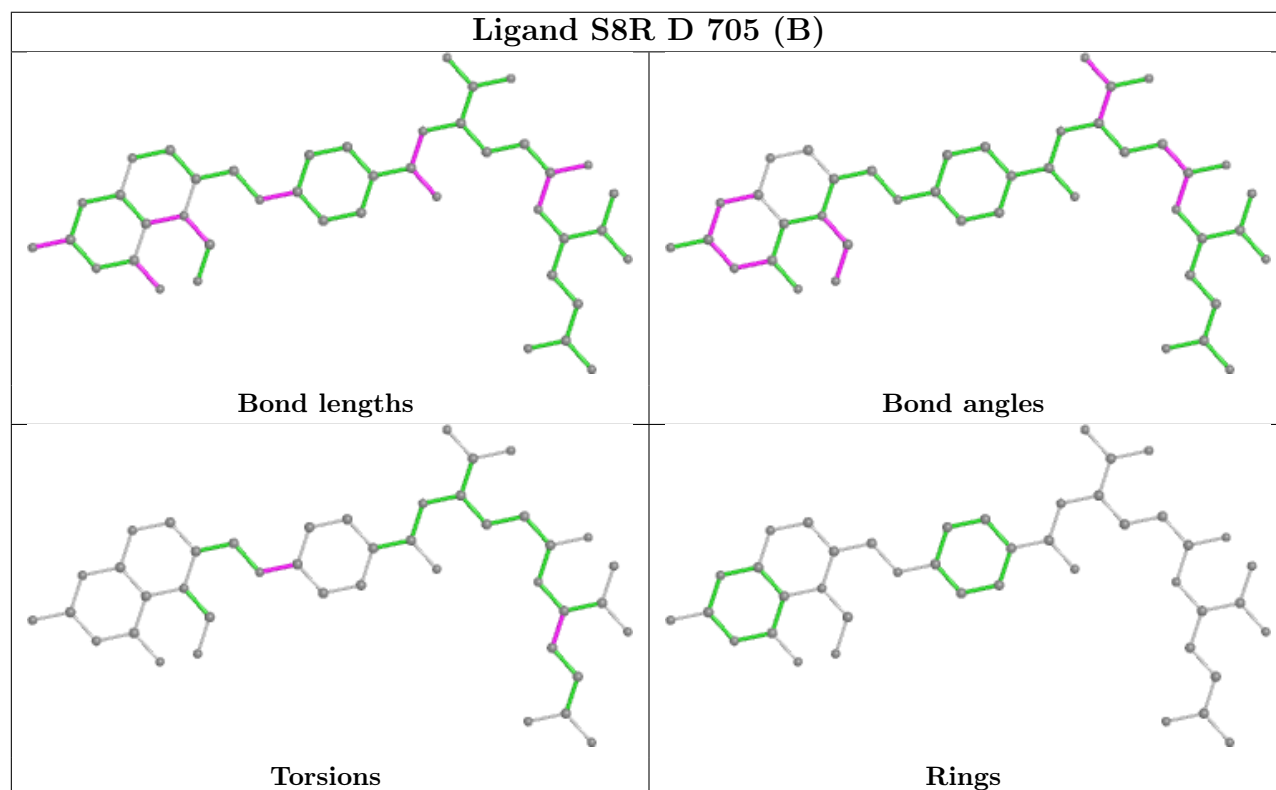
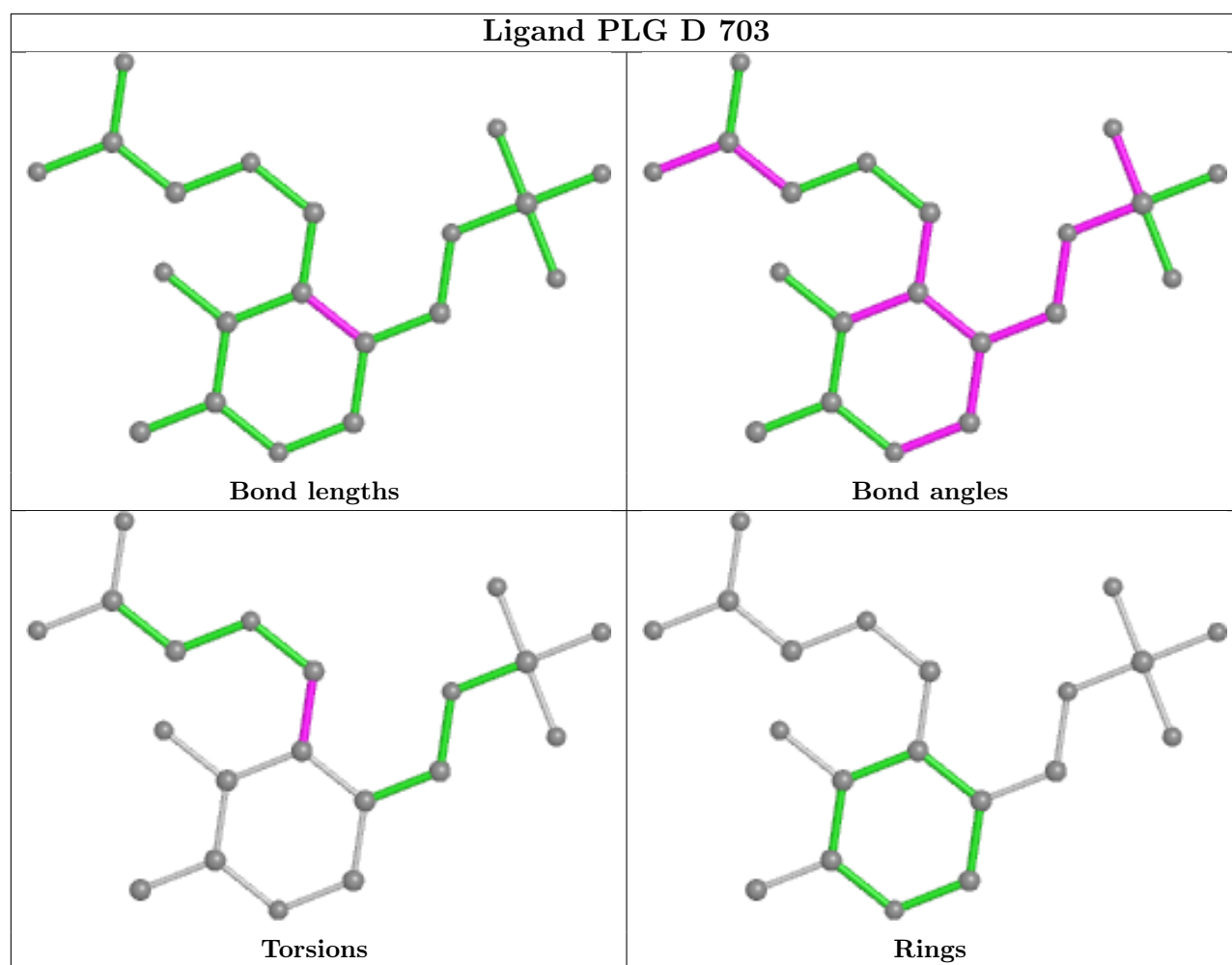


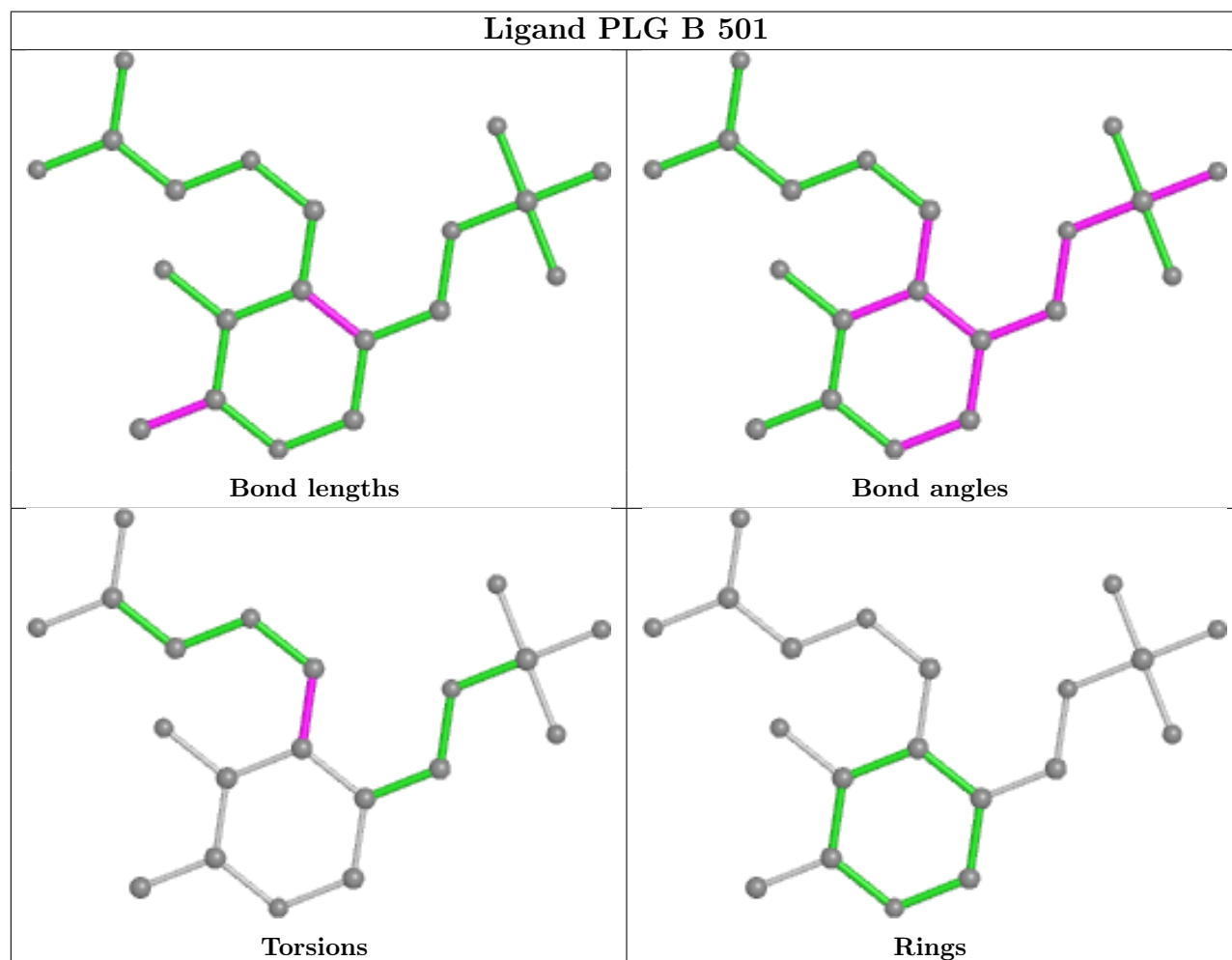
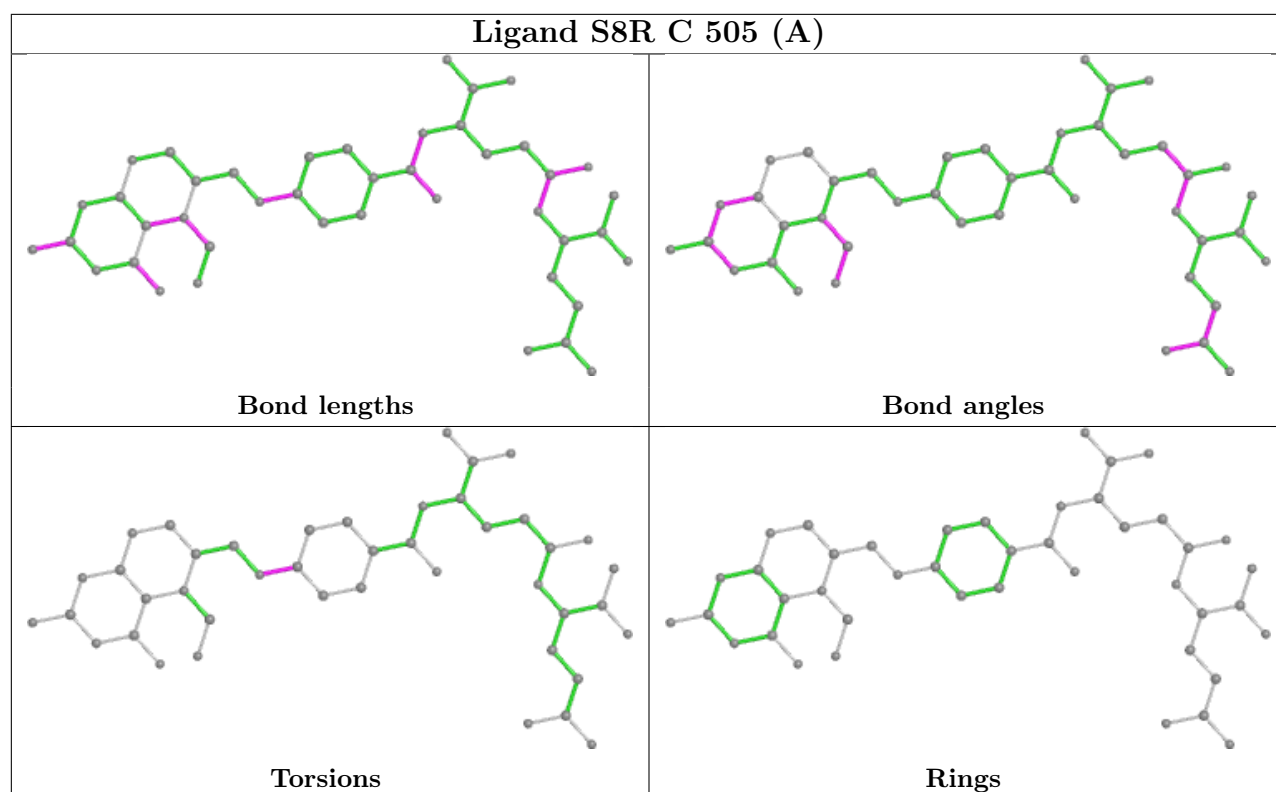
*Continued from previous page...*

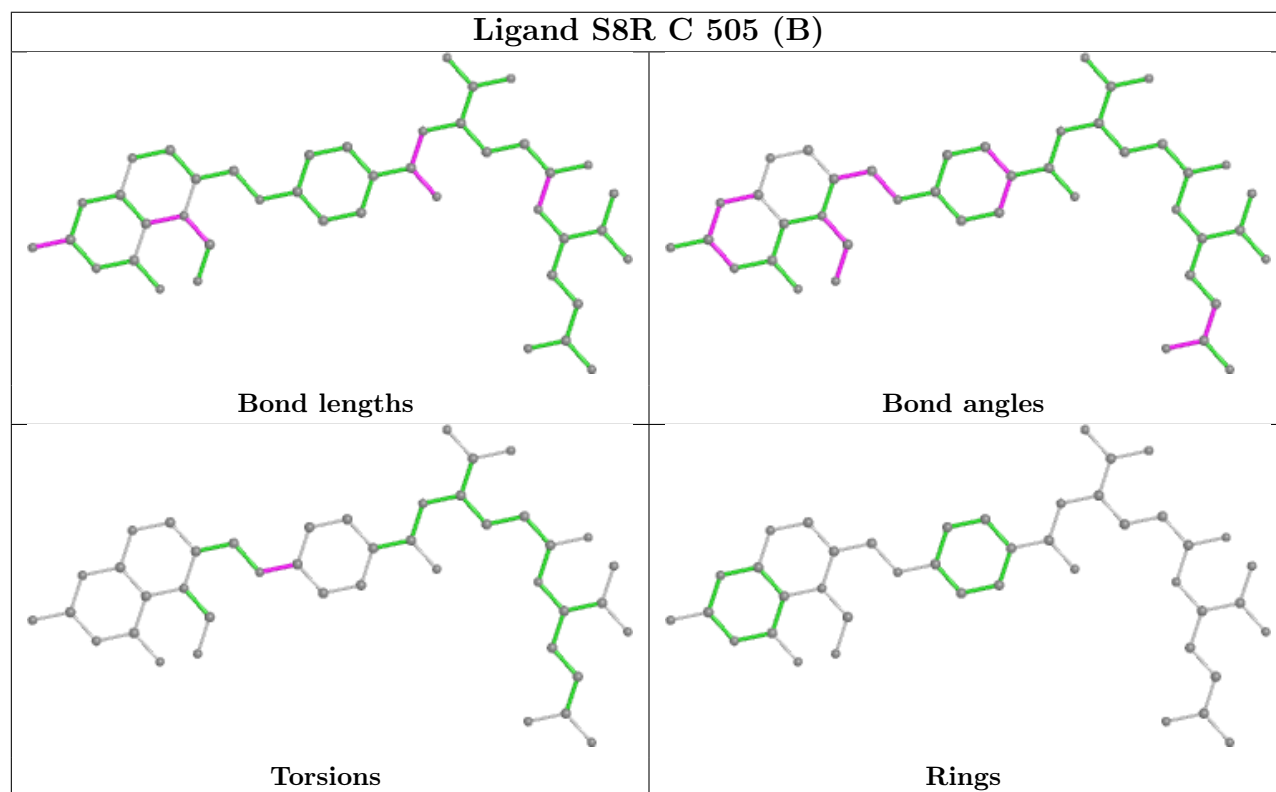
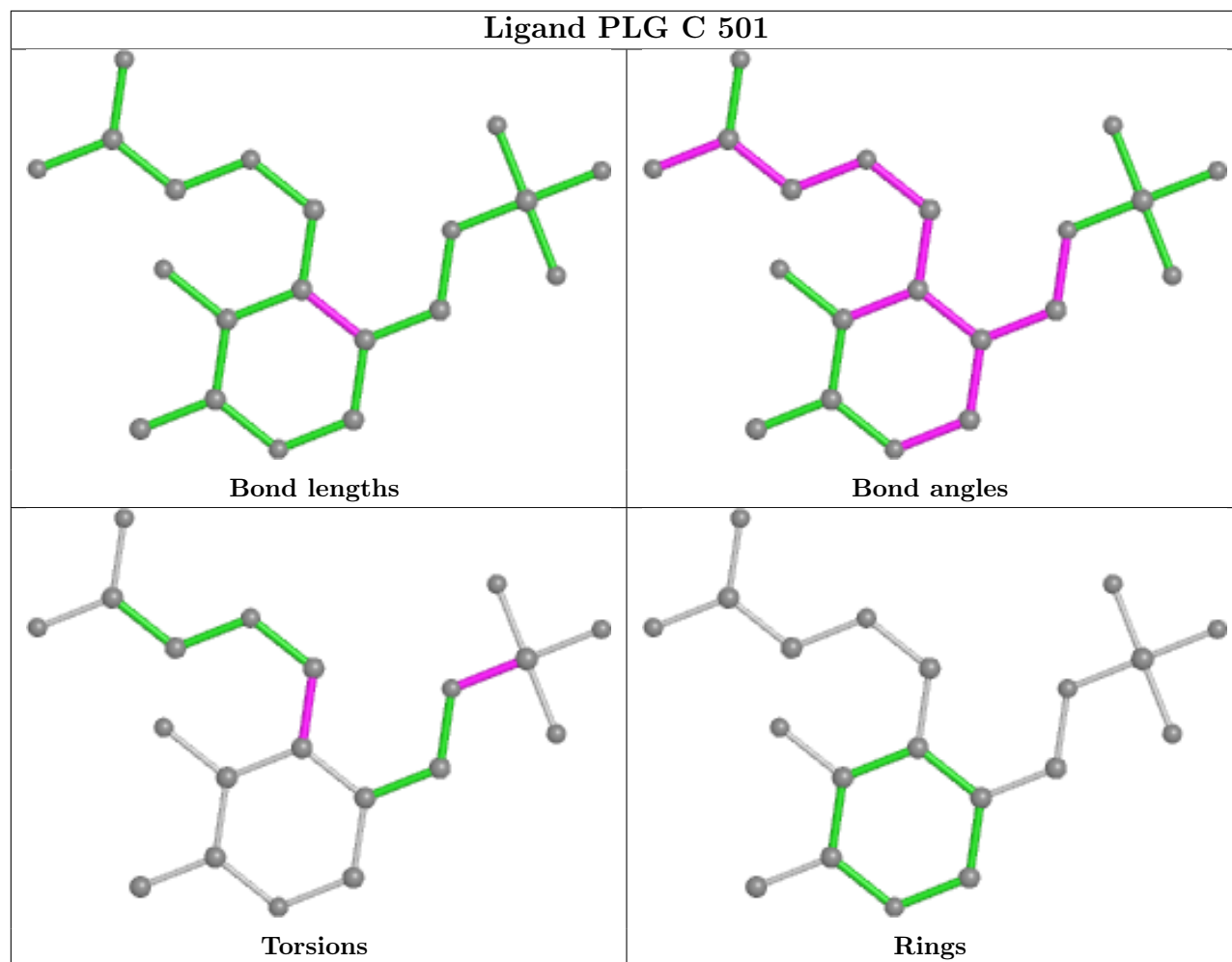
Mol	Chain	Res	Type	Clashes	Symm-Clashes
2	A	501	PLG	1	0
4	B	502[B]	S8R	1	0
3	D	701	EDO	2	0

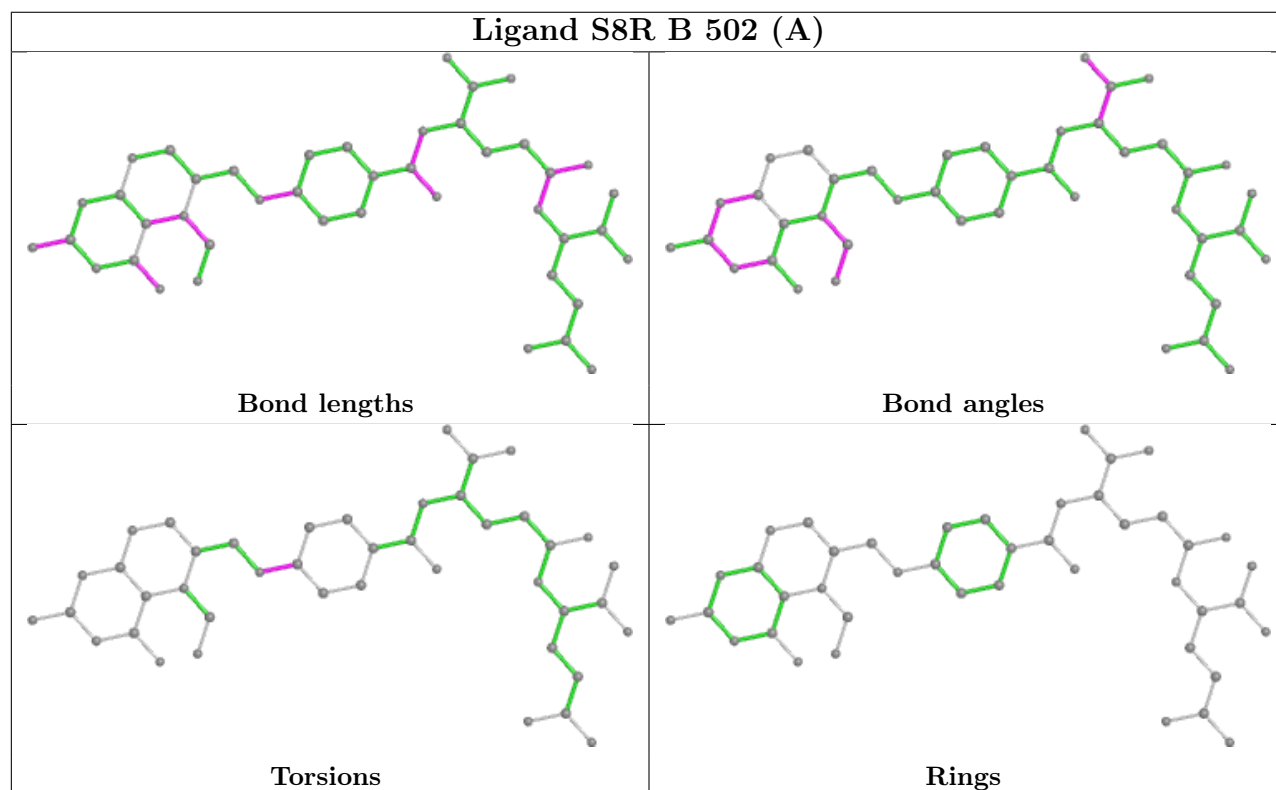
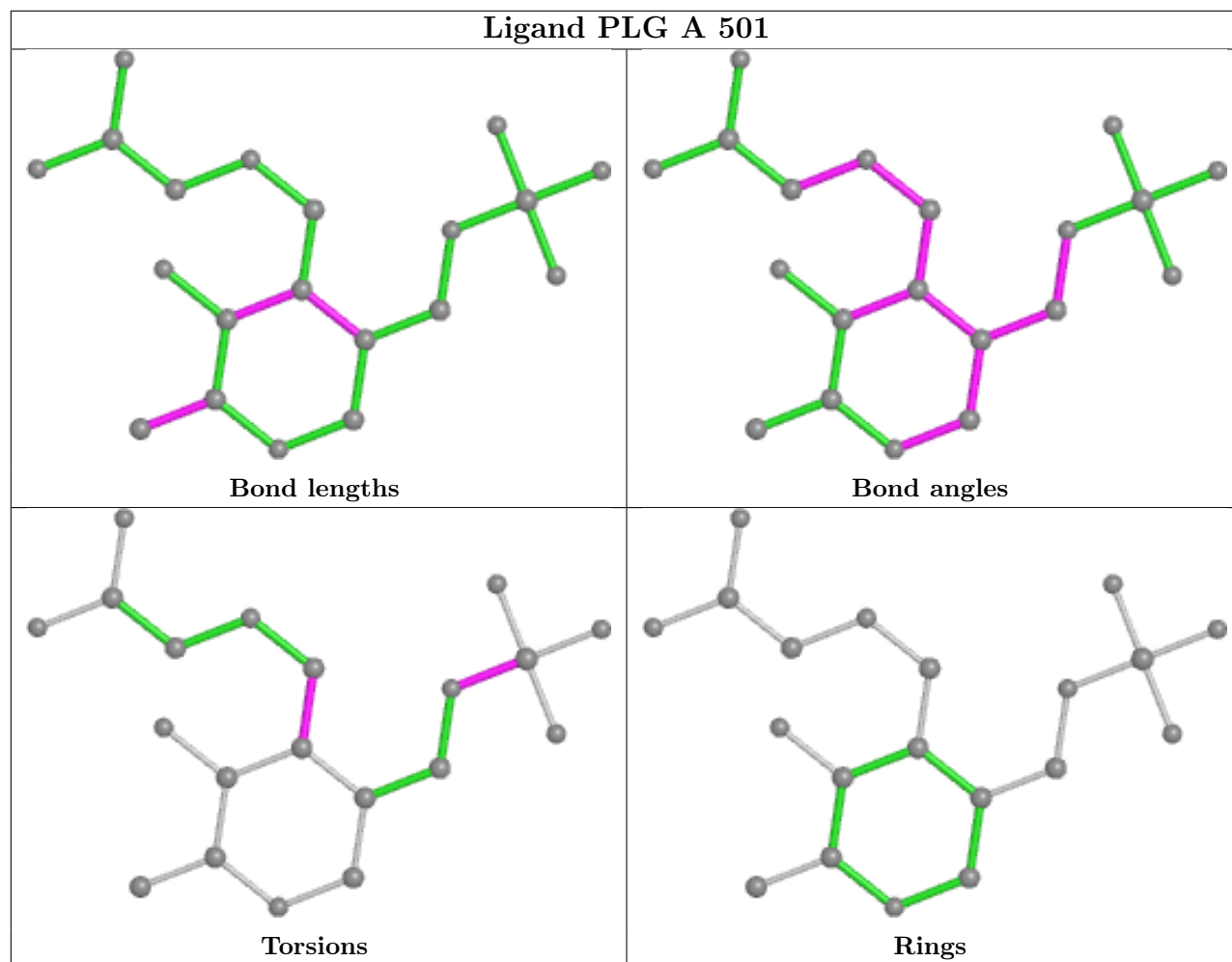
The following is a two-dimensional graphical depiction of Mogul quality analysis of bond lengths, bond angles, torsion angles, and ring geometry for all instances of the Ligand of Interest. In addition, ligands with molecular weight > 250 and outliers as shown on the validation Tables will also be included. For torsion angles, if less than 5% of the Mogul distribution of torsion angles is within 10 degrees of the torsion angle in question, then that torsion angle is considered an outlier. Any bond that is central to one or more torsion angles identified as an outlier by Mogul will be highlighted in the graph. For rings, the root-mean-square deviation (RMSD) between the ring in question and similar rings identified by Mogul is calculated over all ring torsion angles. If the average RMSD is greater than 60 degrees and the minimal RMSD between the ring in question and any Mogul-identified rings is also greater than 60 degrees, then that ring is considered an outlier. The outliers are highlighted in purple. The color gray indicates Mogul did not find sufficient equivalents in the CSD to analyse the geometry.

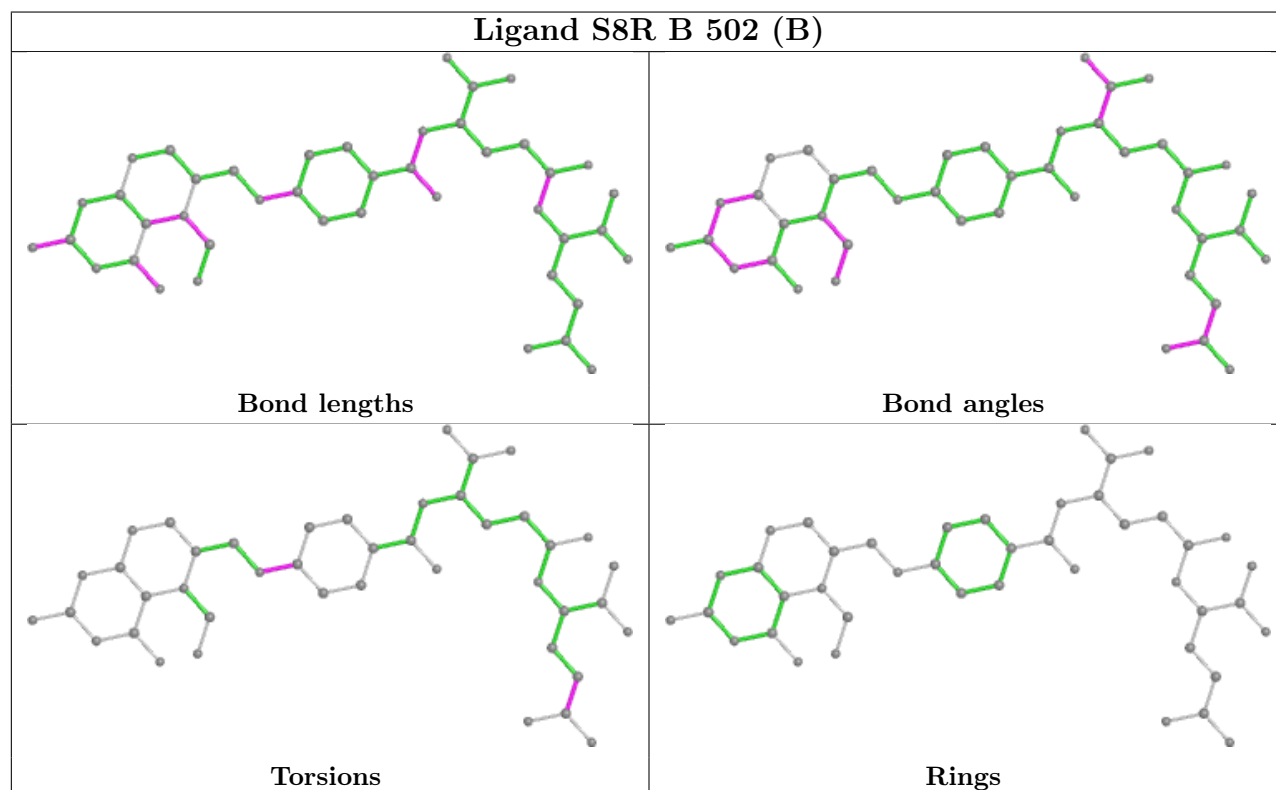
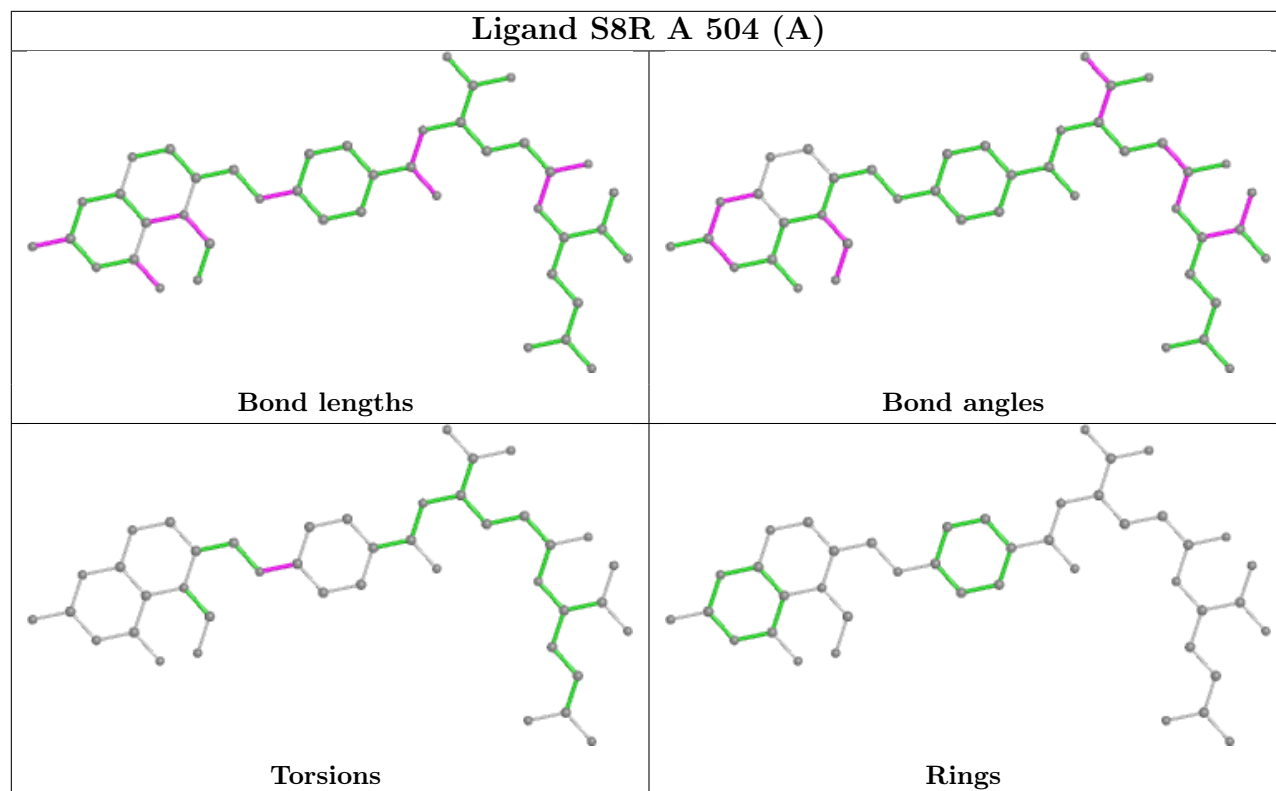


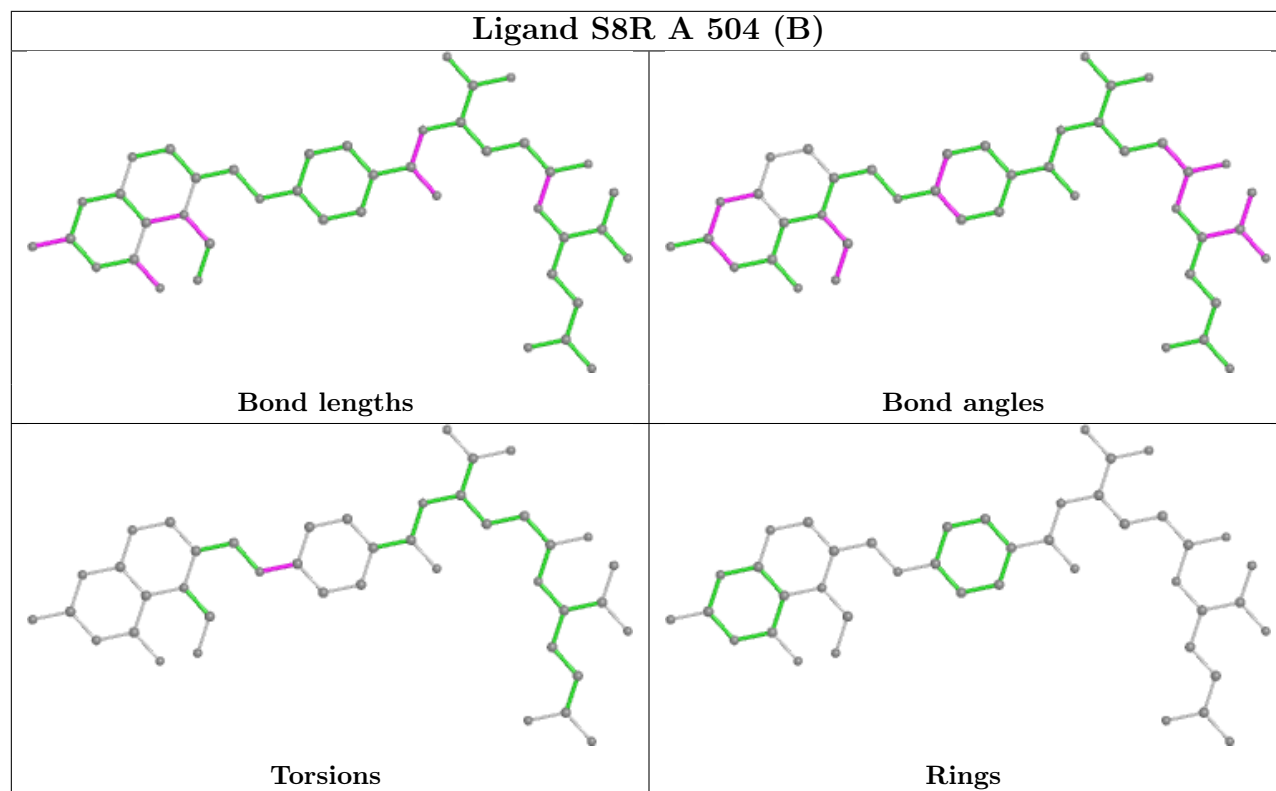












## 5.7 Other polymers [i](#)

There are no such residues in this entry.

## 5.8 Polymer linkage issues [i](#)

There are no chain breaks in this entry.

## 6 Fit of model and data [i](#)

### 6.1 Protein, DNA and RNA chains [i](#)

In the following table, the column labelled ‘#RSRZ > 2’ contains the number (and percentage) of RSRZ outliers, followed by percent RSRZ outliers for the chain as percentile scores relative to all X-ray entries and entries of similar resolution. The OWAB column contains the minimum, median, 95<sup>th</sup> percentile and maximum values of the occupancy-weighted average B-factor per residue. The column labelled ‘Q < 0.9’ lists the number of (and percentage) of residues with an average occupancy less than 0.9.

Mol	Chain	Analysed	<RSRZ>	#RSRZ>2	OWAB(Å <sup>2</sup> )	Q<0.9
1	A	472/492 (95%)	0.00	14 (2%) 50 54	18, 28, 46, 86	0
1	B	472/492 (95%)	-0.03	25 (5%) 26 29	16, 25, 51, 91	0
1	C	472/492 (95%)	-0.15	13 (2%) 53 57	18, 24, 41, 82	0
1	D	472/492 (95%)	0.11	27 (5%) 23 26	17, 26, 54, 91	0
All	All	1888/1968 (95%)	-0.02	79 (4%) 36 40	16, 26, 48, 91	0

All (79) RSRZ outliers are listed below:

Mol	Chain	Res	Type	RSRZ
1	B	266	GLY	9.7
1	D	266	GLY	7.9
1	D	430	LEU	7.3
1	A	266	GLY	7.0
1	B	268	PRO	6.0
1	D	267	GLN	6.0
1	B	265	LYS	5.9
1	D	265	LYS	5.9
1	C	266	GLY	5.7
1	D	429	LEU	5.5
1	D	263	PRO	5.4
1	A	268	PRO	5.2
1	D	268	PRO	5.2
1	C	265	LYS	4.8
1	A	263	PRO	4.8
1	A	267	GLN	4.5
1	B	430	LEU	4.5
1	B	267	GLN	4.4
1	D	262	PRO	4.4
1	A	270	ASN	4.3
1	B	263	PRO	4.3

*Continued on next page...*



*Continued from previous page...*

<b>Mol</b>	<b>Chain</b>	<b>Res</b>	<b>Type</b>	<b>RSRZ</b>
1	A	264	LYS	4.2
1	B	426	HIS	4.2
1	C	268	PRO	4.1
1	D	0	HIS	3.9
1	D	270	ASN	3.9
1	C	263	PRO	3.9
1	A	262	PRO	3.9
1	D	271[A]	ALA	3.8
1	C	270	ASN	3.8
1	A	265	LYS	3.6
1	B	269	GLU	3.6
1	B	433	PHE	3.5
1	D	426	HIS	3.5
1	D	264	LYS	3.4
1	B	264	LYS	3.4
1	D	431	LYS	3.4
1	D	433	PHE	3.4
1	D	269	GLU	3.4
1	C	267	GLN	3.3
1	D	353	LEU	3.3
1	B	271	ALA	3.3
1	B	431	LYS	3.1
1	B	270	ASN	3.1
1	B	262	PRO	3.0
1	D	422	ILE	3.0
1	B	427	GLY	3.0
1	B	0	HIS	2.9
1	A	269	GLU	2.9
1	D	272	VAL	2.8
1	D	436	GLY	2.7
1	D	380	SER	2.6
1	B	382	ALA	2.6
1	A	471	ASP	2.6
1	A	380	SER	2.6
1	A	271	ALA	2.5
1	C	269	GLU	2.5
1	C	264	LYS	2.5
1	A	272	VAL	2.5
1	B	429	LEU	2.5
1	D	438	VAL	2.4
1	D	434	ASN	2.4
1	C	429	LEU	2.4

*Continued on next page...*

*Continued from previous page...*

Mol	Chain	Res	Type	RSRZ
1	B	272	VAL	2.3
1	C	308	SER	2.3
1	D	432	ASP	2.3
1	B	432	ASP	2.3
1	C	291	PRO	2.2
1	D	435	LYS	2.2
1	B	428	LYS	2.2
1	B	438	VAL	2.2
1	A	0	HIS	2.1
1	D	439	ASN	2.1
1	D	427	GLY	2.1
1	B	260	PRO	2.0
1	C	283	VAL	2.0
1	C	0	HIS	2.0
1	B	422	ILE	2.0
1	B	141	THR	2.0

## 6.2 Non-standard residues in protein, DNA, RNA chains [i](#)

There are no non-standard protein/DNA/RNA residues in this entry.

## 6.3 Carbohydrates [i](#)

There are no monosaccharides in this entry.

## 6.4 Ligands [i](#)

In the following table, the Atoms column lists the number of modelled atoms in the group and the number defined in the chemical component dictionary. The B-factors column lists the minimum, median, 95<sup>th</sup> percentile and maximum values of B factors of atoms in the group. The column labelled 'Q< 0.9' lists the number of atoms with occupancy less than 0.9.

Mol	Type	Chain	Res	Atoms	RSCC	RSR	B-factors(Å <sup>2</sup> )	Q<0.9
3	EDO	B	503	4/4	0.82	0.13	36,41,43,52	0
3	EDO	B	504	4/4	0.83	0.14	34,38,43,44	0
3	EDO	C	504	4/4	0.84	0.20	36,39,56,62	0
4	S8R	B	502[A]	43/43	0.85	0.15	21,30,49,59	43
4	S8R	B	502[B]	43/43	0.85	0.15	20,30,49,60	43
3	EDO	A	502	4/4	0.88	0.12	29,32,36,38	0
4	S8R	D	705[A]	43/43	0.88	0.13	21,28,49,55	43

*Continued on next page...*

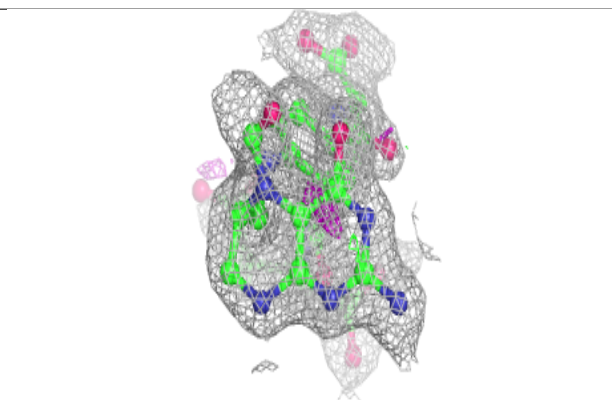
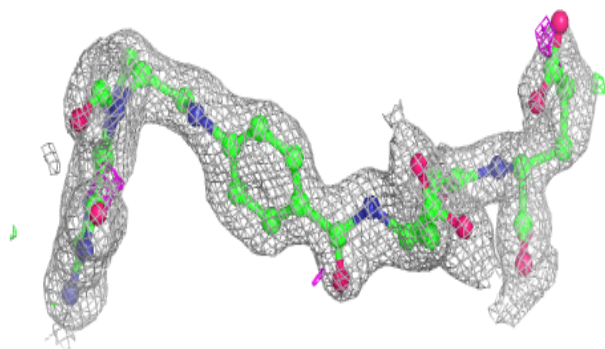
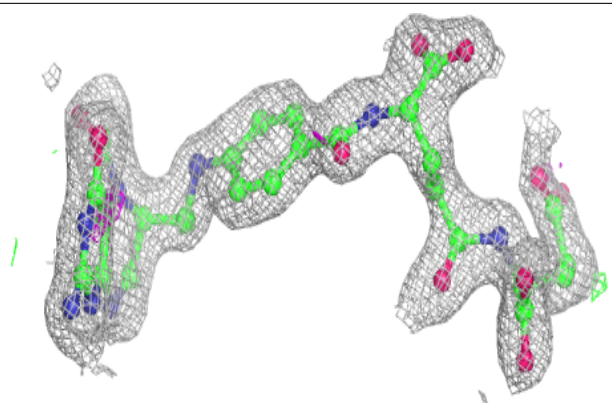
*Continued from previous page...*

Mol	Type	Chain	Res	Atoms	RSCC	RSR	B-factors(Å <sup>2</sup> )	Q<0.9
4	S8R	D	705[B]	43/43	0.88	0.13	21,28,48,50	43
3	EDO	A	507	4/4	0.89	0.10	33,37,41,49	0
3	EDO	D	701	4/4	0.90	0.09	30,40,44,46	0
4	S8R	C	505[B]	43/43	0.92	0.11	16,21,38,44	43
3	EDO	C	502	4/4	0.92	0.10	32,33,36,37	0
4	S8R	C	505[A]	43/43	0.92	0.11	16,21,38,44	43
3	EDO	D	704	4/4	0.93	0.11	40,41,46,46	0
4	S8R	A	504[A]	43/43	0.93	0.09	19,25,40,46	43
4	S8R	A	504[B]	43/43	0.93	0.09	19,25,41,46	43
3	EDO	A	505	4/4	0.94	0.20	30,30,31,32	0
3	EDO	A	506	4/4	0.94	0.10	38,39,48,53	0
3	EDO	D	702	4/4	0.94	0.15	29,32,36,37	0
3	EDO	A	503	4/4	0.95	0.12	31,32,37,37	0
3	EDO	C	503	4/4	0.96	0.14	29,30,31,32	0
2	PLG	C	501	20/20	0.97	0.09	16,20,21,25	0
2	PLG	B	501	20/20	0.98	0.11	16,19,22,24	0
2	PLG	A	501	20/20	0.98	0.10	16,21,24,28	0
2	PLG	D	703	20/20	0.98	0.12	15,19,24,25	0

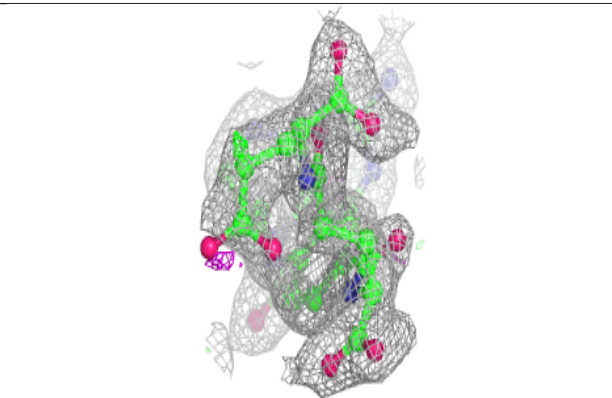
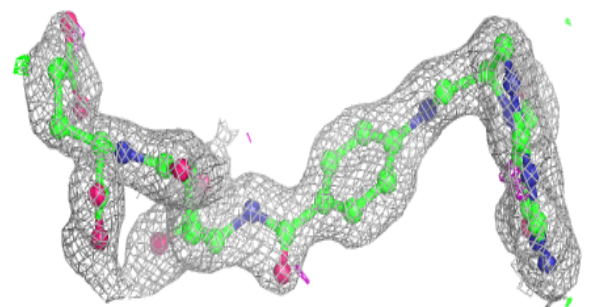
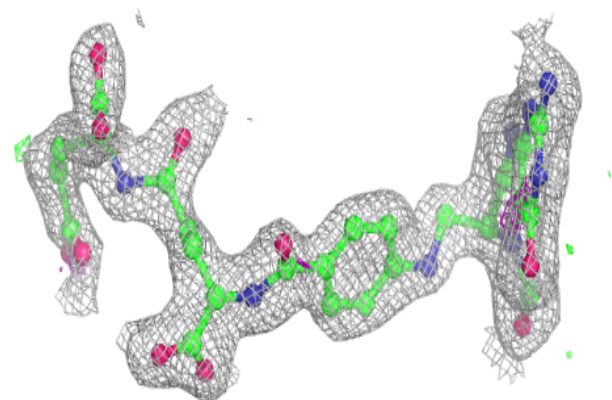
The following is a graphical depiction of the model fit to experimental electron density of all instances of the Ligand of Interest. In addition, ligands with molecular weight > 250 and outliers as shown on the geometry validation Tables will also be included. Each fit is shown from different orientation to approximate a three-dimensional view.

**Electron density around S8R B 502 (A):**

$2mF_o-DF_c$  (at 0.7 rmsd) in gray  
 $mF_o-DF_c$  (at 3 rmsd) in purple (negative)  
and green (positive)

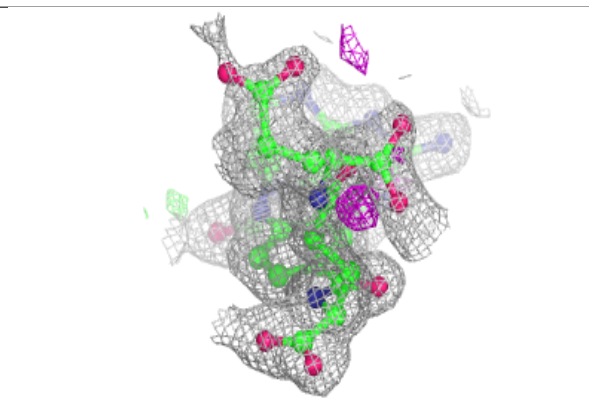
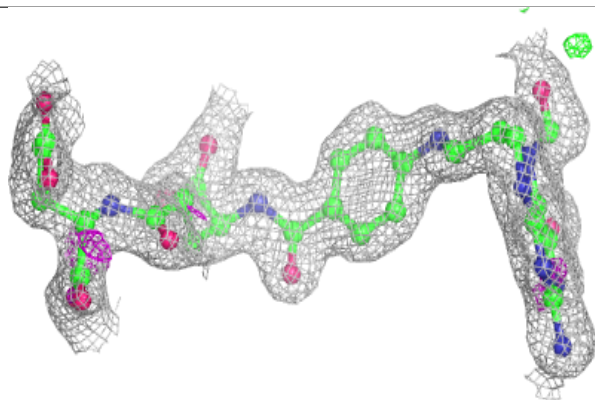
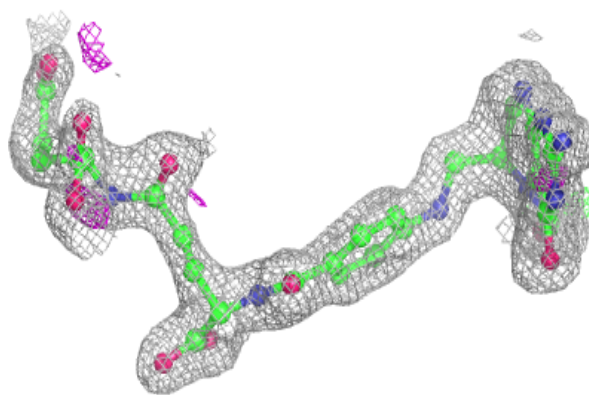
**Electron density around S8R B 502 (B):**

$2mF_o-DF_c$  (at 0.7 rmsd) in gray  
 $mF_o-DF_c$  (at 3 rmsd) in purple (negative)  
and green (positive)

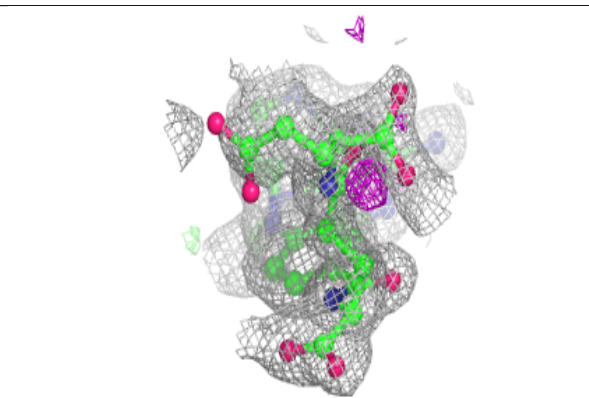
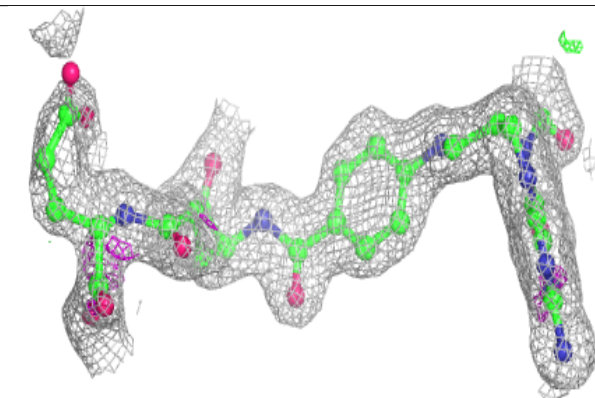
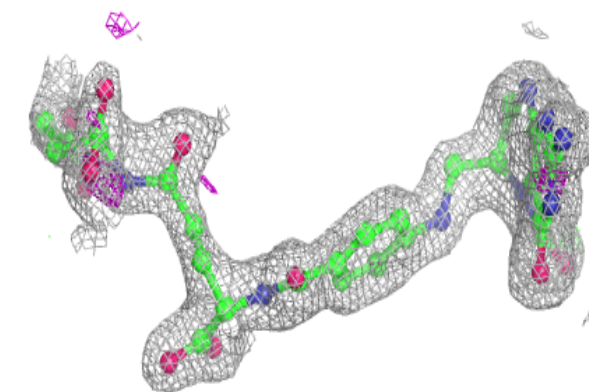


**Electron density around S8R D 705 (A):**

$2mF_o-DF_c$  (at 0.7 rmsd) in gray  
 $mF_o-DF_c$  (at 3 rmsd) in purple (negative)  
and green (positive)

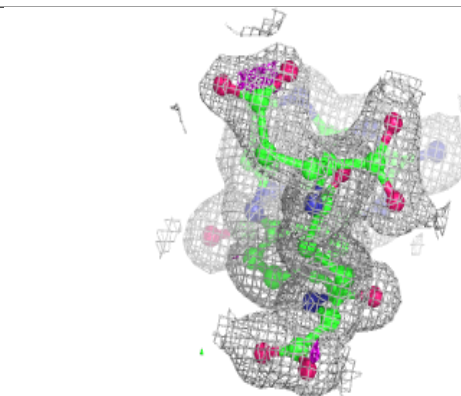
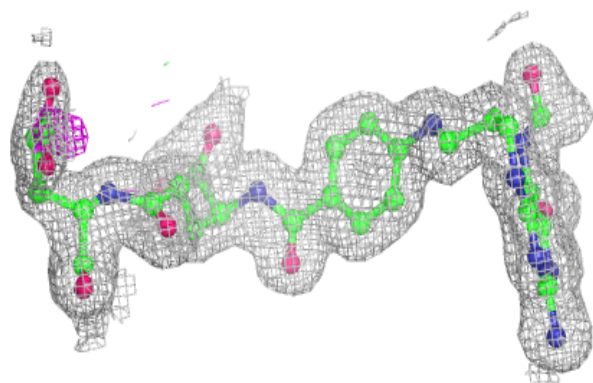
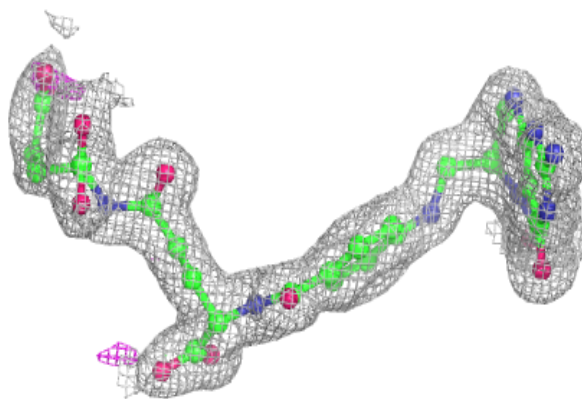
**Electron density around S8R D 705 (B):**

$2mF_o-DF_c$  (at 0.7 rmsd) in gray  
 $mF_o-DF_c$  (at 3 rmsd) in purple (negative)  
and green (positive)

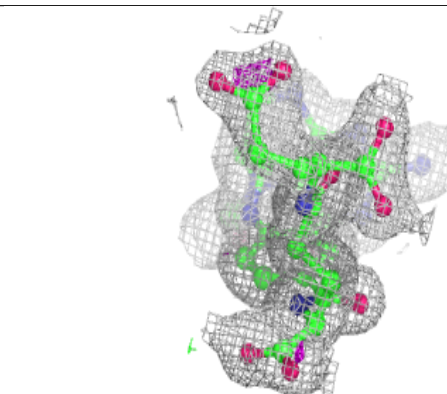
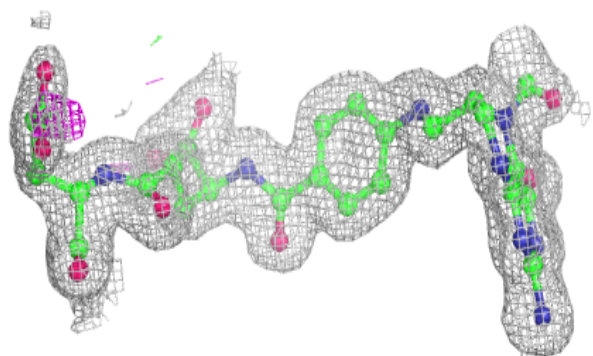
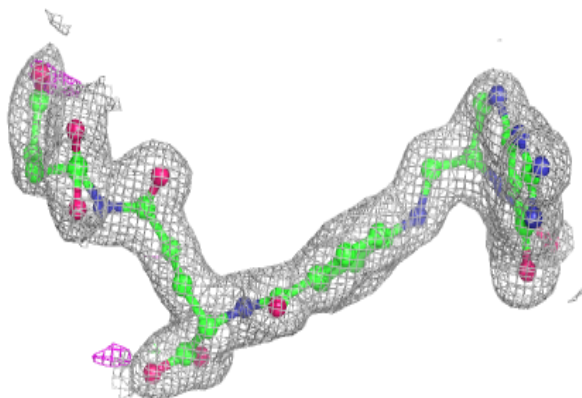


**Electron density around S8R C 505 (B):**

$2mF_o-DF_c$  (at 0.7 rmsd) in gray  
 $mF_o-DF_c$  (at 3 rmsd) in purple (negative)  
and green (positive)

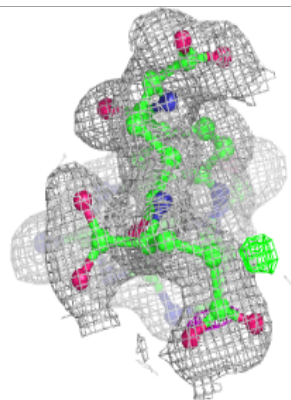
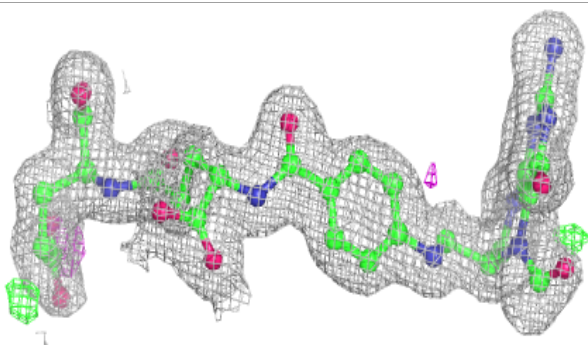
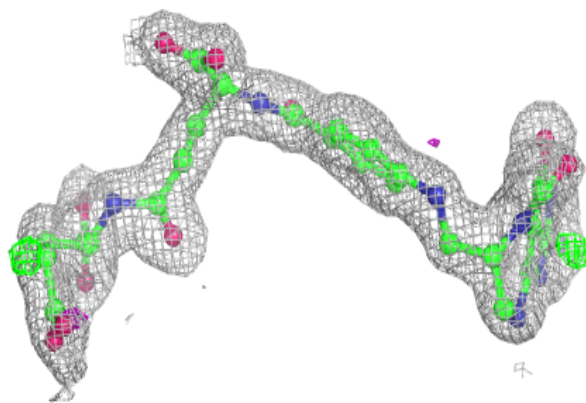
**Electron density around S8R C 505 (A):**

$2mF_o-DF_c$  (at 0.7 rmsd) in gray  
 $mF_o-DF_c$  (at 3 rmsd) in purple (negative)  
and green (positive)

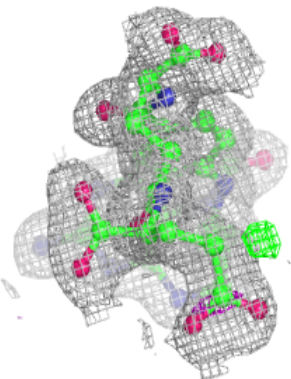
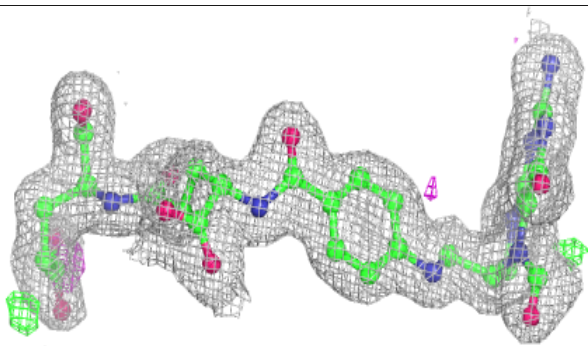
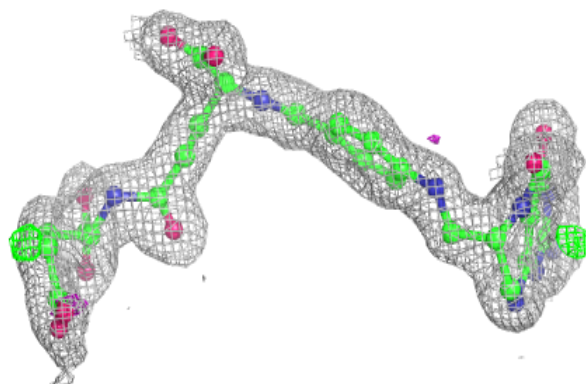


**Electron density around S8R A 504 (A):**

$2mF_o-DF_c$  (at 0.7 rmsd) in gray  
 $mF_o-DF_c$  (at 3 rmsd) in purple (negative)  
and green (positive)

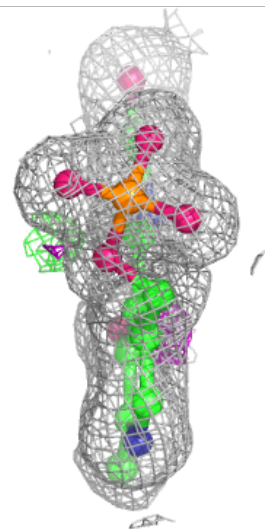
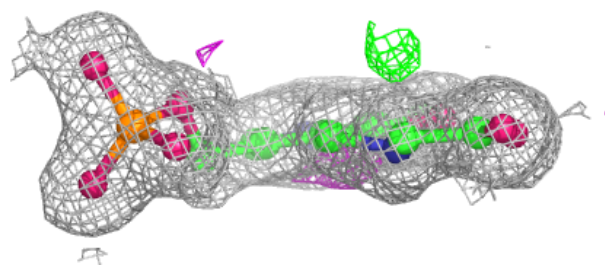
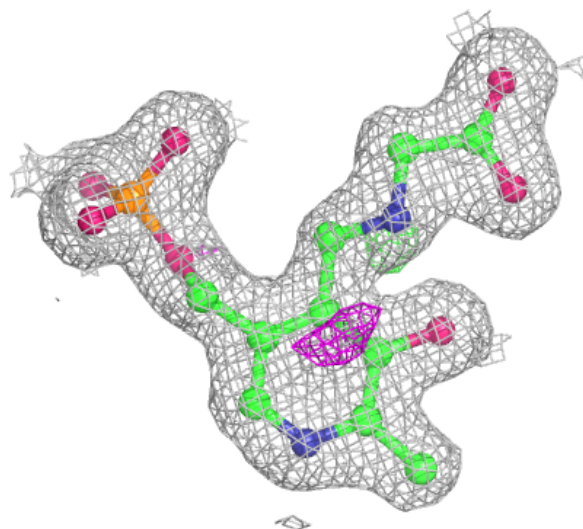
**Electron density around S8R A 504 (B):**

$2mF_o-DF_c$  (at 0.7 rmsd) in gray  
 $mF_o-DF_c$  (at 3 rmsd) in purple (negative)  
and green (positive)



**Electron density around PLG C 501:**

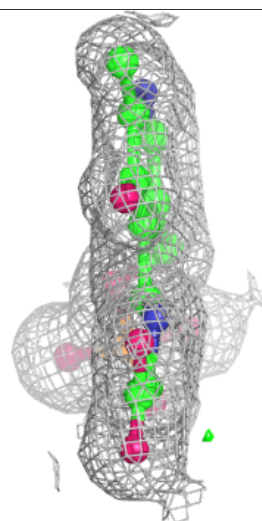
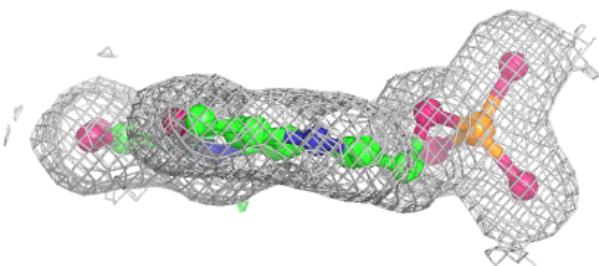
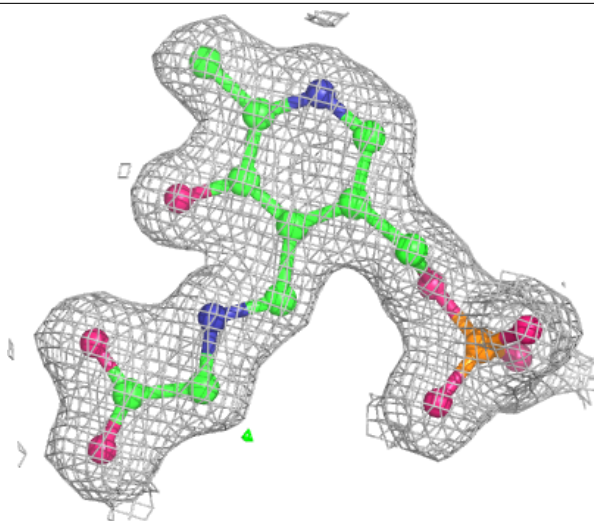
$2mF_o-DF_c$  (at 0.7 rmsd) in gray  
 $mF_o-DF_c$  (at 3 rmsd) in purple (negative)  
and green (positive)





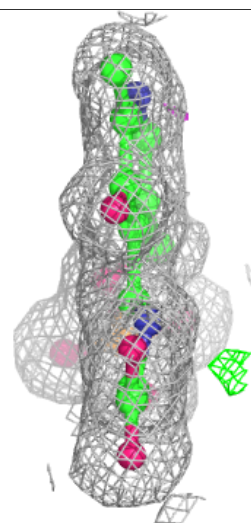
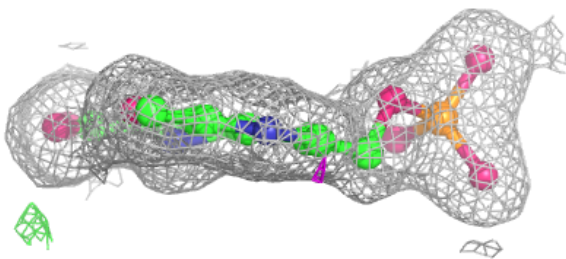
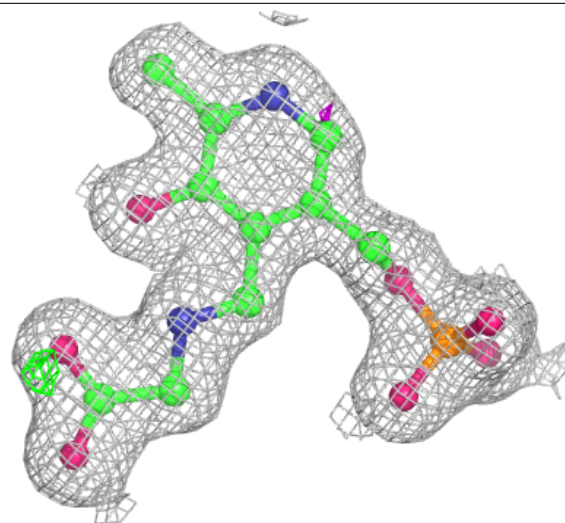
**Electron density around PLG B 501:**

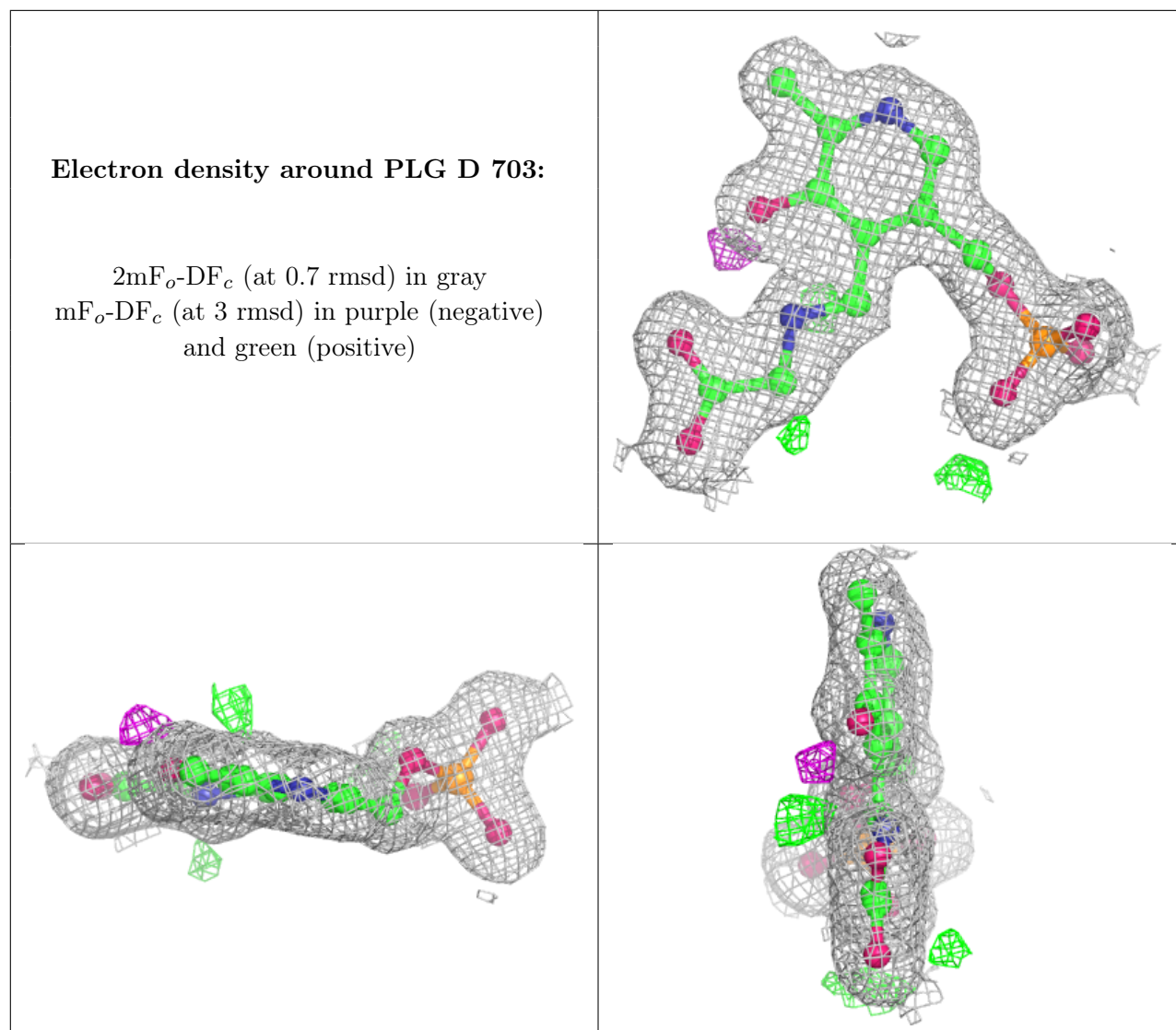
$2mF_o-DF_c$  (at 0.7 rmsd) in gray  
 $mF_o-DF_c$  (at 3 rmsd) in purple (negative)  
and green (positive)



**Electron density around PLG A 501:**

$2mF_o-DF_c$  (at 0.7 rmsd) in gray  
 $mF_o-DF_c$  (at 3 rmsd) in purple (negative)  
and green (positive)





## 6.5 Other polymers [i](#)

There are no such residues in this entry.