



# Full wwPDB X-ray Structure Validation Report ⓘ

Sep 14, 2020 – 09:44 AM BST

PDB ID : 6TTW  
Title : Crystal structure of the human METTL3-METTL14 complex bound to Compound 4 (ASI\_M3M\_047)  
Authors : Bedi, R.K.; Huang, D.; Sledz, P.; Caffisch, A.  
Deposited on : 2019-12-30  
Resolution : 2.20 Å(reported)

This is a Full wwPDB X-ray Structure Validation Report for a publicly released PDB entry.

We welcome your comments at [validation@mail.wwpdb.org](mailto:validation@mail.wwpdb.org)

A user guide is available at

<https://www.wwpdb.org/validation/2017/XrayValidationReportHelp>

with specific help available everywhere you see the ⓘ symbol.

---

The following versions of software and data (see [references ⓘ](#)) were used in the production of this report:

MolProbity : 4.02b-467  
Mogul : 1.8.5 (274361), CSD as541be (2020)  
Xtriage (Phenix) : 1.13  
EDS : 2.14.4.dev1  
buster-report : 1.1.7 (2018)  
Percentile statistics : 20191225.v01 (using entries in the PDB archive December 25th 2019)  
Refmac : 5.8.0158  
CCP4 : 7.0.044 (Gargrove)  
Ideal geometry (proteins) : Engh & Huber (2001)  
Ideal geometry (DNA, RNA) : Parkinson et al. (1996)  
Validation Pipeline (wwPDB-VP) : 2.14.4.dev1

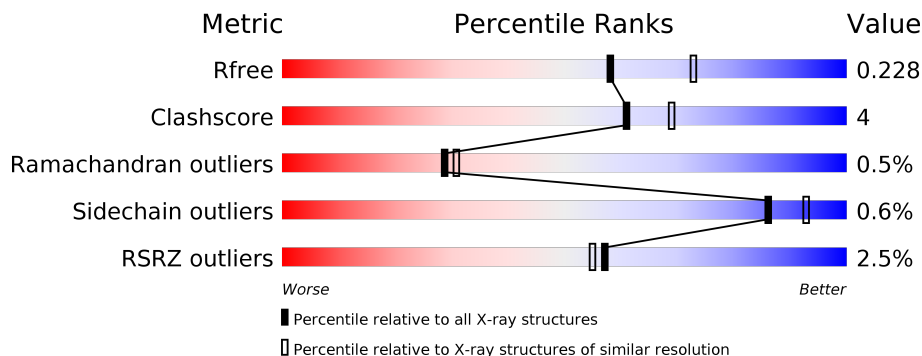
# 1 Overall quality at a glance

The following experimental techniques were used to determine the structure:

*X-RAY DIFFRACTION*

The reported resolution of this entry is 2.20 Å.

Percentile scores (ranging between 0-100) for global validation metrics of the entry are shown in the following graphic. The table shows the number of entries on which the scores are based.



Metric	Whole archive (#Entries)	Similar resolution (#Entries, resolution range(Å))
$R_{free}$	130704	4898 (2.20-2.20)
Clashscore	141614	5594 (2.20-2.20)
Ramachandran outliers	138981	5503 (2.20-2.20)
Sidechain outliers	138945	5504 (2.20-2.20)
RSRZ outliers	127900	4800 (2.20-2.20)

The table below summarises the geometric issues observed across the polymeric chains and their fit to the electron density. The red, orange, yellow and green segments on the lower bar indicate the fraction of residues that contain outliers for  $\geq 3$ , 2, 1 and 0 types of geometric quality criteria respectively. A grey segment represents the fraction of residues that are not modelled. The numeric value for each fraction is indicated below the corresponding segment, with a dot representing fractions  $\leq 5\%$ . The upper red bar (where present) indicates the fraction of residues that have poor fit to the electron density. The numeric value is given above the bar.

Mol	Chain	Length	Quality of chain
1	A	580	
2	B	456	

## 2 Entry composition i

There are 5 unique types of molecules in this entry. The entry contains 3681 atoms, of which 0 are hydrogens and 0 are deuteriums.

In the tables below, the ZeroOcc column contains the number of atoms modelled with zero occupancy, the AltConf column contains the number of residues with at least one atom in alternate conformation and the Trace column contains the number of residues modelled with at most 2 atoms.

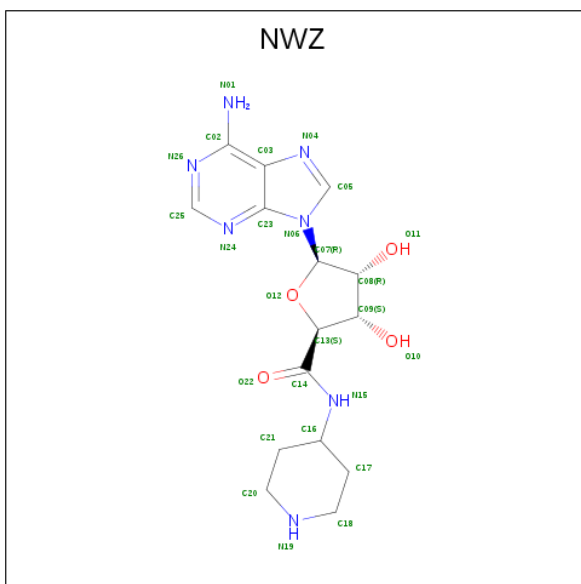
- Molecule 1 is a protein called N6-adenosine-methyltransferase catalytic subunit.

Mol	Chain	Residues	Atoms					ZeroOcc	AltConf	Trace
			Total	C	N	O	S			
1	A	198	1558	998	271	280	9	0	0	0

- Molecule 2 is a protein called N6-adenosine-methyltransferase non-catalytic subunit.

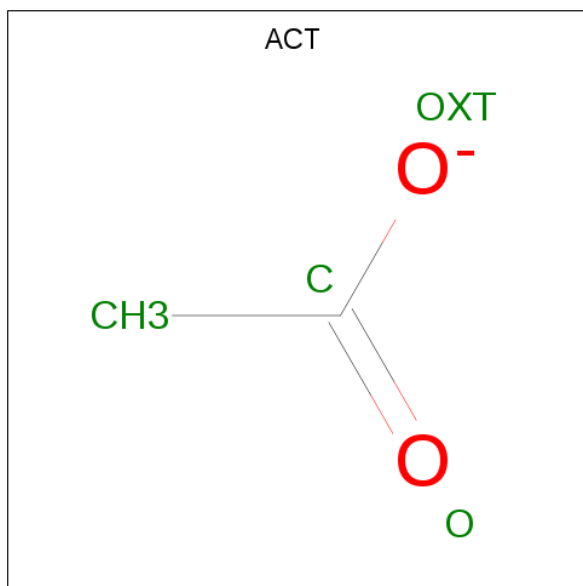
Mol	Chain	Residues	Atoms					ZeroOcc	AltConf	Trace
			Total	C	N	O	S			
2	B	239	1859	1196	314	336	13	0	1	0

- Molecule 3 is (2 {S},3 {S},4 {R},5 {R})-5-(6-aminopurin-9-yl)-3,4-bis(oxidanyl)- {N}-piperidin-4-yl-oxolane-2-carboxamide (three-letter code: NWZ) (formula: C<sub>15</sub>H<sub>21</sub>N<sub>7</sub>O<sub>4</sub>) (labeled as "Ligand of Interest" by author).



Mol	Chain	Residues	Atoms				ZeroOcc	AltConf
			Total	C	N	O		
3	A	1	26	15	7	4	0	0

- Molecule 4 is ACETATE ION (three-letter code: ACT) (formula:  $C_2H_3O_2$ ).



Mol	Chain	Residues	Atoms	ZeroOcc	AltConf
4	B	1	Total C O 4 2 2	0	0

- Molecule 5 is water.

Mol	Chain	Residues	Atoms	ZeroOcc	AltConf
5	A	102	Total O 102 102	0	0
5	B	132	Total O 132 132	0	0



THR	L275	ARG
K285	GLY	GLY
E286	GLY	GLY
H287	ARG	ARG
F289	GLY	GLY
VAL	THR	THR
LYS	SER	SER
ARG	GLY	ALA
SER	GLY	GLY
THR	GLY	ARG
ASP	ARG	GLU
GLY	ARG	ASN
ASP	ARG	ARG
PHE	ASN	ASN
ILE	ARG	SER
HIS	ASN	ASN
ALA	ALA	PHE
ASN	ASN	PHE
V309	ARG	ARG
D310	GLY	GLY
I311	GLU	GLY
D312	ARG	ARG
I324	GLY	GLY
F337	PHE	PHE
L364	ARG	ARG
Y369	GLY	GLY
Y374	GLY	GLY
T389	ALA	HIS
I392	ARG	ARG
E393	GLY	GLY
R394	PHE	PHE
L395	PRO	PRO
ARG	PRO	ARG
PRO	PRO	PRO
LYS	LYS	LYS
SER	SER	SER
PRO	PRO	PRO
PRO	PRO	PRO
PRO	PRO	PRO
LYS	LYS	LYS
SER	SER	SER
LYS	LYS	LYS
ASP	ASP	ASP
ARG	ARG	ARG
GLY	GLY	GLY
GLY	GLY	GLY
ALA	ALA	ALA
PRO	PRO	PRO

## 4 Data and refinement statistics i

Property	Value	Source
Space group	P 32 2 1	Depositor
Cell constants a, b, c, $\alpha$ , $\beta$ , $\gamma$	63.88Å 63.88Å 225.63Å 90.00° 90.00° 120.00°	Depositor
Resolution (Å)	49.67 – 2.20 49.67 – 2.20	Depositor EDS
% Data completeness (in resolution range)	93.8 (49.67-2.20) 93.8 (49.67-2.20)	Depositor EDS
$R_{merge}$	(Not available)	Depositor
$R_{sym}$	(Not available)	Depositor
$\langle I/\sigma(I) \rangle$ <sup>1</sup>	1.93 (at 2.20Å)	Xtrriage
Refinement program	PHENIX 1.17.1_3660	Depositor
R, $R_{free}$	0.184 , 0.229 0.184 , 0.228	Depositor DCC
$R_{free}$ test set	1314 reflections (5.00%)	wwPDB-VP
Wilson B-factor (Å <sup>2</sup> )	34.8	Xtrriage
Anisotropy	0.165	Xtrriage
Bulk solvent $k_{sol}$ (e/Å <sup>3</sup> ), $B_{sol}$ (Å <sup>2</sup> )	0.33 , 51.1	EDS
L-test for twinning <sup>2</sup>	$\langle  L  \rangle = 0.50$ , $\langle L^2 \rangle = 0.33$	Xtrriage
Estimated twinning fraction	0.032 for -h,-k,l	Xtrriage
$F_o, F_c$ correlation	0.96	EDS
Total number of atoms	3681	wwPDB-VP
Average B, all atoms (Å <sup>2</sup> )	39.0	wwPDB-VP

Xtrriage's analysis on translational NCS is as follows: *The largest off-origin peak in the Patterson function is 4.59% of the height of the origin peak. No significant pseudotranslation is detected.*

<sup>1</sup>Intensities estimated from amplitudes.

<sup>2</sup>Theoretical values of  $\langle |L| \rangle$ ,  $\langle L^2 \rangle$  for acentric reflections are 0.5, 0.333 respectively for untwinned datasets, and 0.375, 0.2 for perfectly twinned datasets.

## 5 Model quality [i](#)

### 5.1 Standard geometry [i](#)

Bond lengths and bond angles in the following residue types are not validated in this section: NWZ, ACT

The Z score for a bond length (or angle) is the number of standard deviations the observed value is removed from the expected value. A bond length (or angle) with  $|Z| > 5$  is considered an outlier worth inspection. RMSZ is the root-mean-square of all Z scores of the bond lengths (or angles).

Mol	Chain	Bond lengths		Bond angles	
		RMSZ	# Z  >5	RMSZ	# Z  >5
1	A	0.44	0/1596	0.65	1/2172 (0.0%)
2	B	0.46	0/1906	0.62	1/2593 (0.0%)
All	All	0.45	0/3502	0.63	2/4765 (0.0%)

There are no bond length outliers.

All (2) bond angle outliers are listed below:

Mol	Chain	Res	Type	Atoms	Z	Observed(°)	Ideal(°)
1	A	368	LEU	CB-CG-CD2	-9.02	95.66	111.00
2	B	152	LEU	CA-CB-CG	5.91	128.89	115.30

There are no chirality outliers.

There are no planarity outliers.

### 5.2 Too-close contacts [i](#)

In the following table, the Non-H and H(model) columns list the number of non-hydrogen atoms and hydrogen atoms in the chain respectively. The H(added) column lists the number of hydrogen atoms added and optimized by MolProbity. The Clashes column lists the number of clashes within the asymmetric unit, whereas Symm-Clashes lists symmetry related clashes.

Mol	Chain	Non-H	H(model)	H(added)	Clashes	Symm-Clashes
1	A	1558	0	1500	16	0
2	B	1859	0	1730	17	0
3	A	26	0	0	0	0
4	B	4	0	3	0	0
5	A	102	0	0	3	0
5	B	132	0	0	5	0
All	All	3681	0	3233	30	0



The all-atom clashscore is defined as the number of clashes found per 1000 atoms (including hydrogen atoms). The all-atom clashscore for this structure is 4.

All (30) close contacts within the same asymmetric unit are listed below, sorted by their clash magnitude.

Atom-1	Atom-2	Interatomic distance (Å)	Clash overlap (Å)
1:A:474:HIS:N	5:A:802:HOH:O	2.24	0.70
2:B:163:SER:OG	5:B:601:HOH:O	2.09	0.69
2:B:312:ASP:OD2	5:B:602:HOH:O	2.14	0.66
1:A:391:VAL:HB	1:A:530:LYS:HG2	1.81	0.62
1:A:368:LEU:HD21	1:A:559:PRO:HD3	1.85	0.58
2:B:154:ARG:O	2:B:156:LYS:N	2.38	0.56
1:A:368:LEU:HD22	1:A:558:ASP:HA	1.88	0.56
2:B:168:MET:HE1	2:B:374:TYR:HB2	1.90	0.54
2:B:169:TYR:HB2	2:B:364:LEU:CD1	2.40	0.52
1:A:479:GLY:HA3	2:B:311:ILE:HD11	1.94	0.50
2:B:324:ILE:HD12	5:B:637:HOH:O	2.11	0.50
1:A:373:TRP:HB2	1:A:551:LEU:HD13	1.92	0.50
2:B:254:ARG:NH2	5:B:604:HOH:O	2.29	0.49
1:A:428:LEU:HD23	1:A:444:LEU:HD12	1.94	0.49
1:A:368:LEU:CD2	1:A:559:PRO:HD3	2.42	0.48
1:A:445:ASN:ND2	5:A:806:HOH:O	2.47	0.47
2:B:179:ILE:HD12	2:B:180:ARG:N	2.29	0.47
1:A:380:TYR:OH	5:A:801:HOH:O	2.20	0.47
1:A:511:SER:HB2	1:A:536:ARG:HH12	1.79	0.47
1:A:539:ASN:O	1:A:541:GLN:HG2	2.15	0.46
1:A:476:LEU:HG	2:B:337:PHE:HZ	1.81	0.46
2:B:168:MET:HE3	2:B:369:TYR:HD1	1.81	0.45
1:A:428:LEU:HD23	1:A:444:LEU:CD1	2.46	0.45
2:B:214:ASP:O	2:B:218:LYS:HG3	2.17	0.45
2:B:179:ILE:HD13	2:B:224:ILE:HG23	1.98	0.44
2:B:183:THR:HB	2:B:184:PRO:HA	2.00	0.44
2:B:260[B]:CYS:SG	2:B:287:HIS:CE1	3.13	0.42
1:A:475:TRP:HB3	2:B:337:PHE:CE1	2.56	0.41
1:A:397:PRO:HB2	1:A:408:THR:HA	2.04	0.40
2:B:237:SER:HB2	5:B:638:HOH:O	2.20	0.40

There are no symmetry-related clashes.

## 5.3 Torsion angles [i](#)

### 5.3.1 Protein backbone [i](#)

In the following table, the Percentiles column shows the percent Ramachandran outliers of the chain as a percentile score with respect to all X-ray entries followed by that with respect to entries of similar resolution.

The Analysed column shows the number of residues for which the backbone conformation was analysed, and the total number of residues.

Mol	Chain	Analysed	Favoured	Allowed	Outliers	Percentiles	
1	A	192/580 (33%)	187 (97%)	5 (3%)	0	100	100
2	B	230/456 (50%)	222 (96%)	6 (3%)	2 (1%)	17	16
All	All	422/1036 (41%)	409 (97%)	11 (3%)	2 (0%)	29	31

All (2) Ramachandran outliers are listed below:

Mol	Chain	Res	Type
2	B	118	ASP
2	B	153	ILE

### 5.3.2 Protein sidechains [i](#)

In the following table, the Percentiles column shows the percent sidechain outliers of the chain as a percentile score with respect to all X-ray entries followed by that with respect to entries of similar resolution.

The Analysed column shows the number of residues for which the sidechain conformation was analysed, and the total number of residues.

Mol	Chain	Analysed	Rotameric	Outliers	Percentiles	
1	A	164/502 (33%)	164 (100%)	0	100	100
2	B	188/392 (48%)	186 (99%)	2 (1%)	73	85
All	All	352/894 (39%)	350 (99%)	2 (1%)	86	93

All (2) residues with a non-rotameric sidechain are listed below:

Mol	Chain	Res	Type
2	B	168	MET
2	B	285	LYS

Some sidechains can be flipped to improve hydrogen bonding and reduce clashes. All (1) such

sidechains are listed below:

Mol	Chain	Res	Type
1	A	445	ASN

### 5.3.3 RNA [i](#)

There are no RNA molecules in this entry.

## 5.4 Non-standard residues in protein, DNA, RNA chains [i](#)

There are no non-standard protein/DNA/RNA residues in this entry.

## 5.5 Carbohydrates [i](#)

There are no monosaccharides in this entry.

## 5.6 Ligand geometry [i](#)

2 ligands are modelled in this entry.

In the following table, the Counts columns list the number of bonds (or angles) for which Mogul statistics could be retrieved, the number of bonds (or angles) that are observed in the model and the number of bonds (or angles) that are defined in the Chemical Component Dictionary. The Link column lists molecule types, if any, to which the group is linked. The Z score for a bond length (or angle) is the number of standard deviations the observed value is removed from the expected value. A bond length (or angle) with  $|Z| > 2$  is considered an outlier worth inspection. RMSZ is the root-mean-square of all Z scores of the bond lengths (or angles).

Mol	Type	Chain	Res	Link	Bond lengths			Bond angles		
					Counts	RMSZ	# Z  > 2	Counts	RMSZ	# Z  > 2
3	NWZ	A	701	-	26,29,29	2.91	10 (38%)	29,42,42	1.82	6 (20%)
4	ACT	B	501	-	1,3,3	8.42	1 (100%)	0,3,3	0.00	-

In the following table, the Chirals column lists the number of chiral outliers, the number of chiral centers analysed, the number of these observed in the model and the number defined in the Chemical Component Dictionary. Similar counts are reported in the Torsion and Rings columns. '-' means no outliers of that kind were identified.

Mol	Type	Chain	Res	Link	Chirals	Torsions	Rings
3	NWZ	A	701	-	-	2/8/36/36	0/4/4/4

All (11) bond length outliers are listed below:

Mol	Chain	Res	Type	Atoms	Z	Observed(Å)	Ideal(Å)
4	B	501	ACT	CH3-C	8.42	1.59	1.48
3	A	701	NWZ	O12-C07	7.77	1.51	1.41
3	A	701	NWZ	C14-N15	6.97	1.49	1.34
3	A	701	NWZ	O12-C13	5.65	1.51	1.43
3	A	701	NWZ	C09-C13	-4.49	1.47	1.53
3	A	701	NWZ	C08-C07	-3.98	1.47	1.53
3	A	701	NWZ	C25-N24	2.82	1.36	1.32
3	A	701	NWZ	C02-N01	2.53	1.43	1.34
3	A	701	NWZ	O22-C14	-2.38	1.18	1.23
3	A	701	NWZ	C09-C08	-2.19	1.47	1.53
3	A	701	NWZ	C03-N04	2.17	1.47	1.39

All (6) bond angle outliers are listed below:

Mol	Chain	Res	Type	Atoms	Z	Observed(°)	Ideal(°)
3	A	701	NWZ	N24-C25-N26	-5.14	120.64	128.68
3	A	701	NWZ	C07-N06-C23	-4.37	118.96	126.64
3	A	701	NWZ	C07-O12-C13	-3.59	102.87	109.11
3	A	701	NWZ	C23-C03-N04	-2.35	106.95	109.40
3	A	701	NWZ	O10-C09-C13	-2.14	106.12	111.23
3	A	701	NWZ	C08-C09-C13	2.14	104.13	101.64

There are no chirality outliers.

All (2) torsion outliers are listed below:

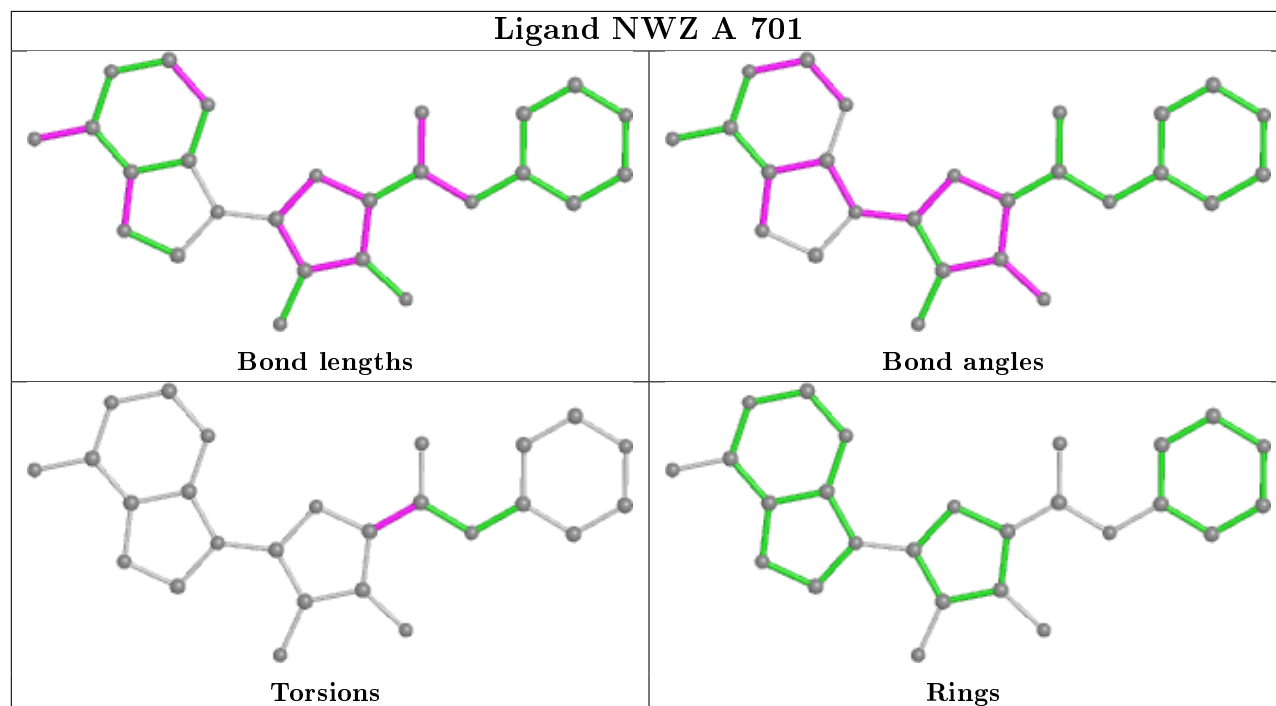
Mol	Chain	Res	Type	Atoms
3	A	701	NWZ	O12-C13-C14-O22
3	A	701	NWZ	O12-C13-C14-N15

There are no ring outliers.

No monomer is involved in short contacts.

The following is a two-dimensional graphical depiction of Mogul quality analysis of bond lengths, bond angles, torsion angles, and ring geometry for all instances of the Ligand of Interest. In addition, ligands with molecular weight > 250 and outliers as shown on the validation Tables will also be included. For torsion angles, if less than 5% of the Mogul distribution of torsion angles is within 10 degrees of the torsion angle in question, then that torsion angle is considered an outlier. Any bond that is central to one or more torsion angles identified as an outlier by Mogul will be highlighted in the graph. For rings, the root-mean-square deviation (RMSD) between the ring in question and similar rings identified by Mogul is calculated over all ring torsion angles. If the average RMSD is greater than 60 degrees and the minimal RMSD between the ring in question and

any Mogul-identified rings is also greater than 60 degrees, then that ring is considered an outlier. The outliers are highlighted in purple. The color gray indicates Mogul did not find sufficient equivalents in the CSD to analyse the geometry.



## 5.7 Other polymers [i](#)

There are no such residues in this entry.

## 5.8 Polymer linkage issues [i](#)

There are no chain breaks in this entry.

## 6 Fit of model and data [i](#)

### 6.1 Protein, DNA and RNA chains [i](#)

In the following table, the column labelled ‘#RSRZ> 2’ contains the number (and percentage) of RSRZ outliers, followed by percent RSRZ outliers for the chain as percentile scores relative to all X-ray entries and entries of similar resolution. The OWAB column contains the minimum, median, 95<sup>th</sup> percentile and maximum values of the occupancy-weighted average B-factor per residue. The column labelled ‘Q< 0.9’ lists the number of (and percentage) of residues with an average occupancy less than 0.9.

Mol	Chain	Analysed	<RSRZ>	#RSRZ>2	OWAB(Å <sup>2</sup> )	Q<0.9
1	A	198/580 (34%)	-0.20	5 (2%) 57 55	26, 36, 63, 78	0
2	B	239/456 (52%)	-0.30	6 (2%) 57 55	25, 35, 70, 91	0
All	All	437/1036 (42%)	-0.26	11 (2%) 57 55	25, 36, 67, 91	0

All (11) RSRZ outliers are listed below:

Mol	Chain	Res	Type	RSRZ
2	B	153	ILE	4.0
1	A	368	LEU	3.9
1	A	574	ILE	3.8
1	A	573	ILE	2.9
1	A	510	THR	2.6
2	B	136	ASP	2.6
2	B	392	ILE	2.5
1	A	575	SER	2.4
2	B	393	GLU	2.3
2	B	395	LEU	2.3
2	B	389	THR	2.0

### 6.2 Non-standard residues in protein, DNA, RNA chains [i](#)

There are no non-standard protein/DNA/RNA residues in this entry.

### 6.3 Carbohydrates [i](#)

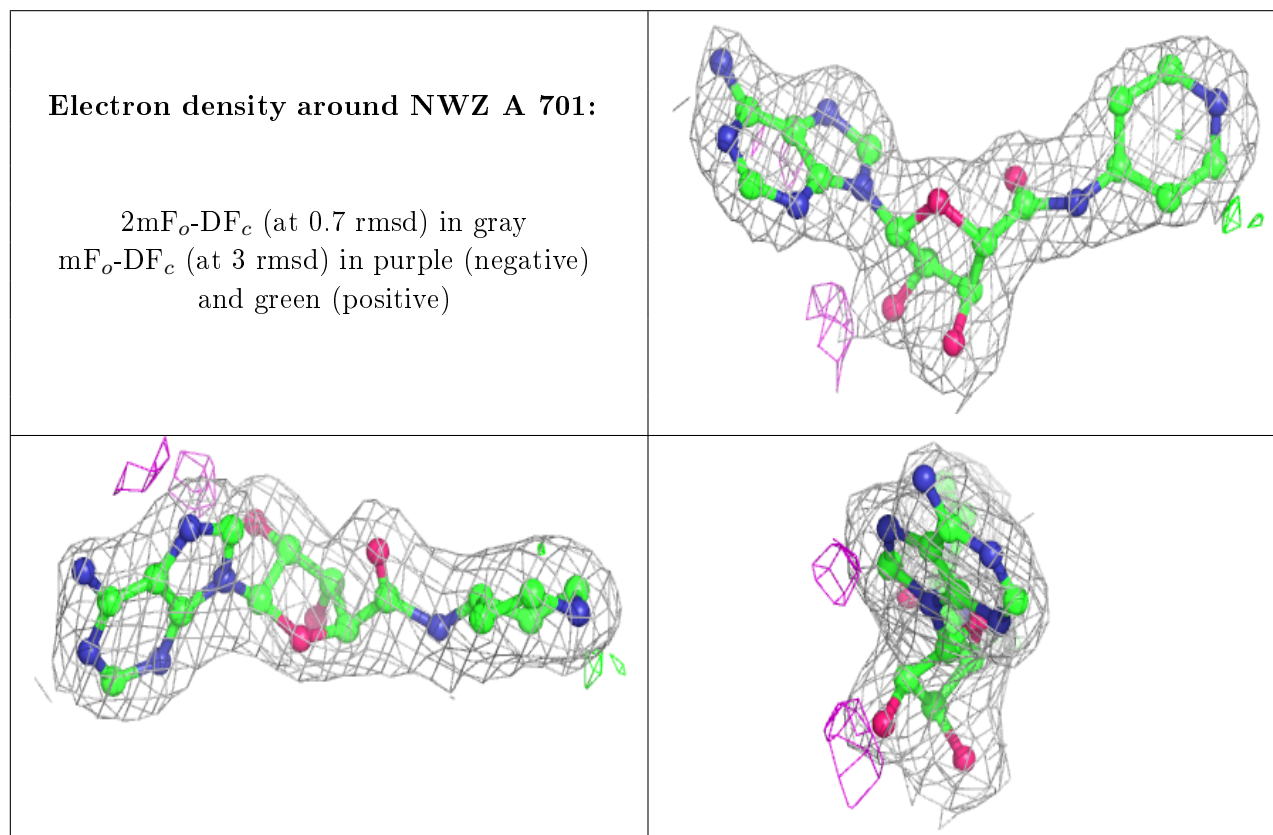
There are no monosaccharides in this entry.

## 6.4 Ligands [i](#)

In the following table, the Atoms column lists the number of modelled atoms in the group and the number defined in the chemical component dictionary. The B-factors column lists the minimum, median, 95<sup>th</sup> percentile and maximum values of B factors of atoms in the group. The column labelled 'Q<0.9' lists the number of atoms with occupancy less than 0.9.

Mol	Type	Chain	Res	Atoms	RSCC	RSR	B-factors(Å <sup>2</sup> )	Q<0.9
3	NWZ	A	701	26/26	0.92	0.12	29,35,41,62	0
4	ACT	B	501	4/4	0.96	0.16	30,31,32,34	0

The following is a graphical depiction of the model fit to experimental electron density of all instances of the Ligand of Interest. In addition, ligands with molecular weight > 250 and outliers as shown on the geometry validation Tables will also be included. Each fit is shown from different orientation to approximate a three-dimensional view.



## 6.5 Other polymers [i](#)

There are no such residues in this entry.