



Full wwPDB EM Validation Report ⓘ

Nov 20, 2022 – 03:56 AM EST

PDB ID : 7TVZ
EMDB ID : EMD-26142
Title : Cryo-EM structure of human band 3-protein 4.2 complex in diagonal conformation
Authors : Xia, X.; Liu, S.H.; Zhou, Z.H.
Deposited on : 2022-02-06
Resolution : 3.60 Å(reported)

This is a Full wwPDB EM Validation Report for a publicly released PDB entry.

We welcome your comments at validation@mail.wwpdb.org

A user guide is available at

<https://www.wwpdb.org/validation/2017/EMValidationReportHelp>

with specific help available everywhere you see the ⓘ symbol.

The types of validation reports are described at

<http://www.wwpdb.org/validation/2017/FAQs#types>.

The following versions of software and data (see [references ⓘ](#)) were used in the production of this report:

EMDB validation analysis : 0.0.1.dev43
Mogul : 1.8.5 (274361), CSD as541be (2020)
MolProbity : 4.02b-467
buster-report : 1.1.7 (2018)
Percentile statistics : 20191225.v01 (using entries in the PDB archive December 25th 2019)
MapQ : 1.9.9
Ideal geometry (proteins) : Engh & Huber (2001)
Ideal geometry (DNA, RNA) : Parkinson et al. (1996)
Validation Pipeline (wwPDB-VP) : 2.31.3

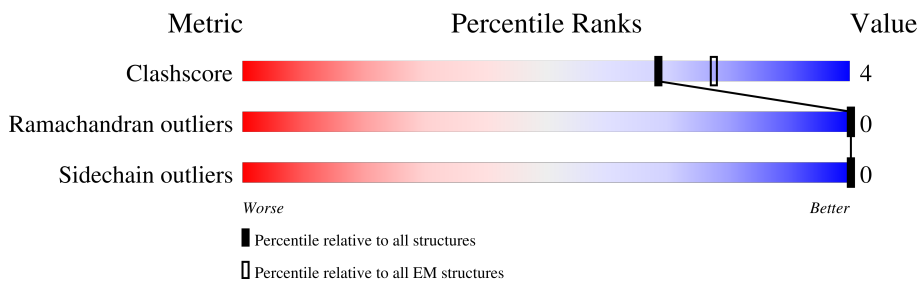
1 Overall quality at a glance

The following experimental techniques were used to determine the structure:

ELECTRON MICROSCOPY

The reported resolution of this entry is 3.60 Å.

Percentile scores (ranging between 0-100) for global validation metrics of the entry are shown in the following graphic. The table shows the number of entries on which the scores are based.



Metric	Whole archive (#Entries)	EM structures (#Entries)
Clashscore	158937	4297
Ramachandran outliers	154571	4023
Sidechain outliers	154315	3826

The table below summarises the geometric issues observed across the polymeric chains and their fit to the map. The red, orange, yellow and green segments of the bar indicate the fraction of residues that contain outliers for ≥ 3 , 2, 1 and 0 types of geometric quality criteria respectively. A grey segment represents the fraction of residues that are not modelled. The numeric value for each fraction is indicated below the corresponding segment, with a dot representing fractions $\leq 5\%$. The upper red bar (where present) indicates the fraction of residues that have poor fit to the EM map (all-atom inclusion $< 40\%$). The numeric value is given above the bar.

Mol	Chain	Length	Quality of chain
1	A	911	
1	B	911	
2	E	691	

2 Entry composition [i](#)

There are 6 unique types of molecules in this entry. The entry contains 18659 atoms, of which 0 are hydrogens and 0 are deuteriums.

In the tables below, the AltConf column contains the number of residues with at least one atom in alternate conformation and the Trace column contains the number of residues modelled with at most 2 atoms.

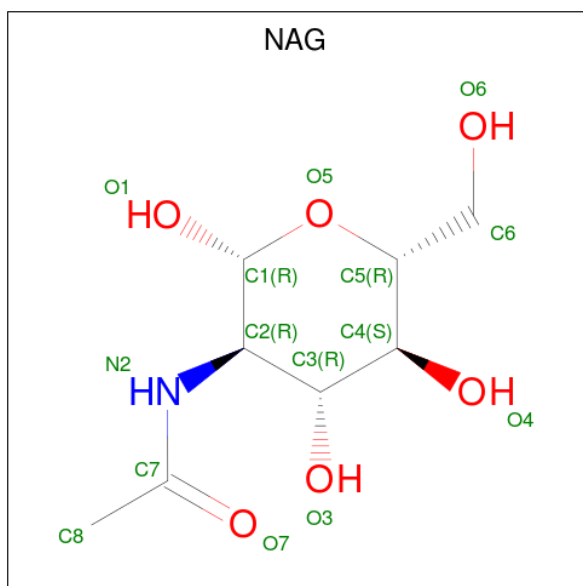
- Molecule 1 is a protein called Band 3 anion transport protein.

Mol	Chain	Residues	Atoms					AltConf	Trace
			Total	C	N	O	S		
1	A	850	Total	C	N	O	S	0	0
			6663	4359	1107	1172	25		
1	B	825	Total	C	N	O	S	0	0
			6489	4256	1076	1133	24		

- Molecule 2 is a protein called Protein 4.2.

Mol	Chain	Residues	Atoms					AltConf	Trace
			Total	C	N	O	S		
2	E	665	Total	C	N	O	S	0	0
			5240	3319	930	968	23		

- Molecule 3 is 2-acetamido-2-deoxy-beta-D-glucopyranose (three-letter code: NAG) (formula: $C_8H_{15}NO_6$).



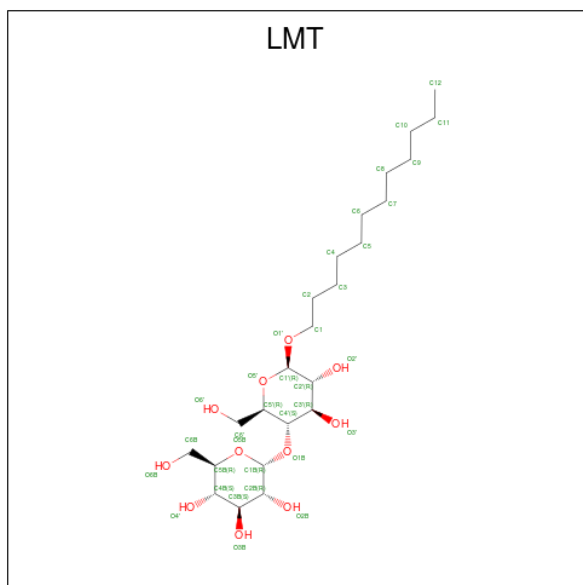
Mol	Chain	Residues	Atoms				AltConf
			Total	C	N	O	
3	A	1	Total	C	N	O	0
			14	8	1	5	

Continued on next page...

Continued from previous page...

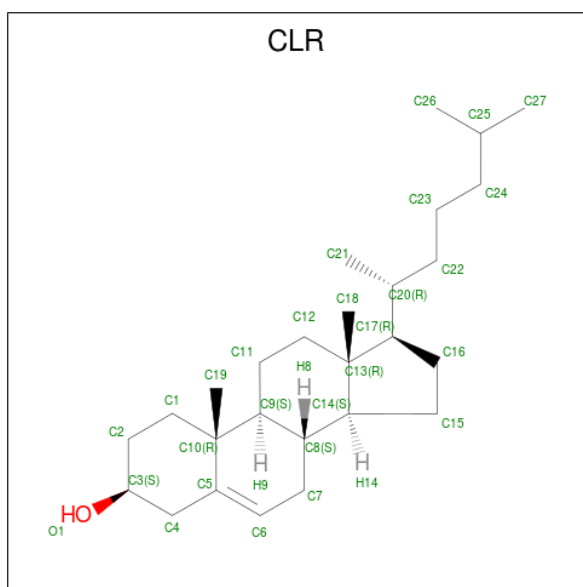
Mol	Chain	Residues	Atoms				AltConf
			Total	C	N	O	
3	B	1	14	8	1	5	0

- Molecule 4 is DODECYL-BETA-D-MALTOSE (three-letter code: LMT) (formula: $C_{24}H_{46}O_{11}$).



Mol	Chain	Residues	Atoms			AltConf
			Total	C	O	
4	A	1	70	48	22	0
4	A	1	70	48	22	0
4	B	1	105	72	33	0
4	B	1	105	72	33	0
4	B	1	105	72	33	0

- Molecule 5 is CHOLESTEROL (three-letter code: CLR) (formula: $C_{27}H_{46}O$).



Mol	Chain	Residues	Atoms		AltConf
5	A	1	Total	C O	0
			28	27 1	
5	B	1	Total	C O	0
			28	27 1	

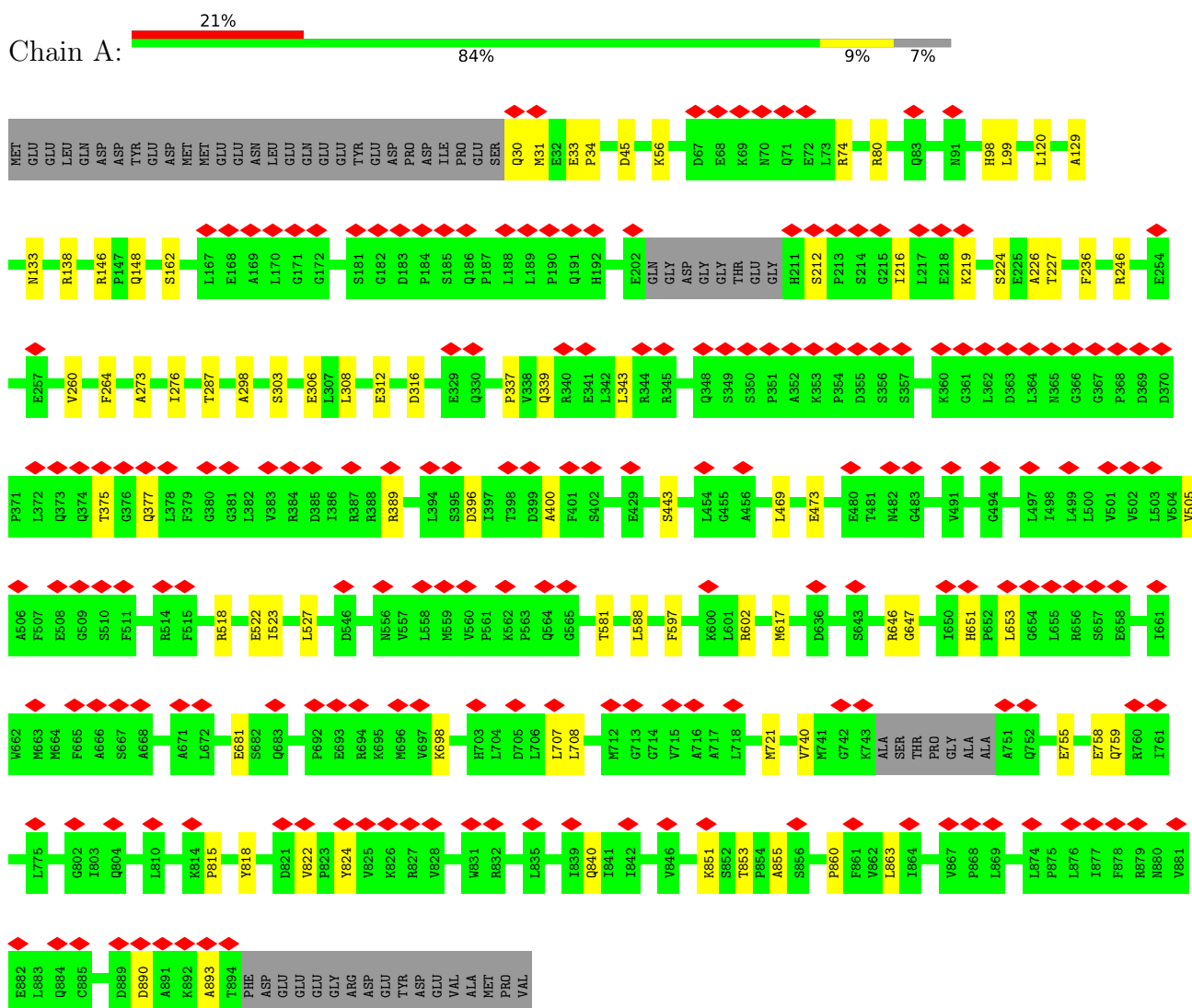
- Molecule 6 is water.

Mol	Chain	Residues	Atoms		AltConf
6	A	4	Total	O	0
			4	4	
6	B	4	Total	O	0
			4	4	

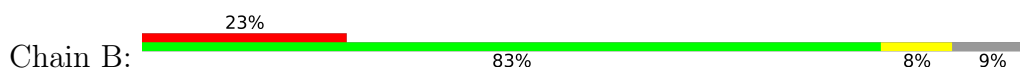
3 Residue-property plots

These plots are drawn for all protein, RNA, DNA and oligosaccharide chains in the entry. The first graphic for a chain summarises the proportions of the various outlier classes displayed in the second graphic. The second graphic shows the sequence view annotated by issues in geometry and atom inclusion in map density. Residues are color-coded according to the number of geometric quality criteria for which they contain at least one outlier: green = 0, yellow = 1, orange = 2 and red = 3 or more. A red diamond above a residue indicates a poor fit to the EM map for this residue (all-atom inclusion < 40%). Stretches of 2 or more consecutive residues without any outlier are shown as a green connector. Residues present in the sample, but not in the model, are shown in grey.

- Molecule 1: Band 3 anion transport protein



- Molecule 1: Band 3 anion transport protein





4 Experimental information

Property	Value	Source
EM reconstruction method	SINGLE PARTICLE	Depositor
Imposed symmetry	POINT, C1	Depositor
Number of particles used	962485	Depositor
Resolution determination method	FSC 0.143 CUT-OFF	Depositor
CTF correction method	PHASE FLIPPING ONLY	Depositor
Microscope	FEI TITAN KRIOS	Depositor
Voltage (kV)	300	Depositor
Electron dose ($e^-/\text{\AA}^2$)	50	Depositor
Minimum defocus (nm)	1800	Depositor
Maximum defocus (nm)	3500	Depositor
Magnification	81000	Depositor
Image detector	GATAN K3 BIOQUANTUM (6k x 4k)	Depositor
Maximum map value	0.191	Depositor
Minimum map value	-0.121	Depositor
Average map value	0.000	Depositor
Map value standard deviation	0.004	Depositor
Recommended contour level	0.028	Depositor
Map size (\AA)	352.0, 352.0, 352.0	wwPDB
Map dimensions	320, 320, 320	wwPDB
Map angles ($^\circ$)	90.0, 90.0, 90.0	wwPDB
Pixel spacing (\AA)	1.1, 1.1, 1.1	Depositor

5 Model quality [i](#)

5.1 Standard geometry [i](#)

Bond lengths and bond angles in the following residue types are not validated in this section: NAG, CLR, LMT

The Z score for a bond length (or angle) is the number of standard deviations the observed value is removed from the expected value. A bond length (or angle) with $|Z| > 5$ is considered an outlier worth inspection. RMSZ is the root-mean-square of all Z scores of the bond lengths (or angles).

Mol	Chain	Bond lengths		Bond angles	
		RMSZ	# Z >5	RMSZ	# Z >5
1	A	0.25	0/6822	0.47	0/9279
1	B	0.25	0/6644	0.46	0/9032
2	E	0.25	0/5349	0.51	0/7259
All	All	0.25	0/18815	0.48	0/25570

There are no bond length outliers.

There are no bond angle outliers.

There are no chirality outliers.

There are no planarity outliers.

5.2 Too-close contacts [i](#)

In the following table, the Non-H and H(model) columns list the number of non-hydrogen atoms and hydrogen atoms in the chain respectively. The H(added) column lists the number of hydrogen atoms added and optimized by MolProbity. The Clashes column lists the number of clashes within the asymmetric unit, whereas Symm-Clashes lists symmetry-related clashes.

Mol	Chain	Non-H	H(model)	H(added)	Clashes	Symm-Clashes
1	A	6663	0	6805	52	0
1	B	6489	0	6682	45	0
2	E	5240	0	5259	47	0
3	A	14	0	13	0	0
3	B	14	0	13	0	0
4	A	70	0	92	6	0
4	B	105	0	138	5	0
5	A	28	0	46	3	0
5	B	28	0	46	2	0
6	A	4	0	0	0	0

Continued on next page...

Continued from previous page...

Mol	Chain	Non-H	H(model)	H(added)	Clashes	Symm-Clashes
6	B	4	0	0	0	0
All	All	18659	0	19094	143	0

The all-atom clashscore is defined as the number of clashes found per 1000 atoms (including hydrogen atoms). The all-atom clashscore for this structure is 4.

All (143) close contacts within the same asymmetric unit are listed below, sorted by their clash magnitude.

Atom-1	Atom-2	Interatomic distance (Å)	Clash overlap (Å)
1:A:34:PRO:HB3	2:E:639:PHE:HE1	1.50	0.76
1:B:541:ILE:HD12	4:B:1103:LMT:H12	1.73	0.69
2:E:126:ARG:HG3	2:E:127:LYS:H	1.59	0.68
1:A:226:ALA:HB2	1:A:260:VAL:HG23	1.76	0.67
1:B:426:LEU:HD22	1:B:469:LEU:HD21	1.75	0.67
1:B:59:VAL:HB	1:B:81:TRP:HB2	1.78	0.65
2:E:179:TRP:HE1	2:E:248:SER:HB2	1.61	0.65
1:A:34:PRO:HB3	2:E:639:PHE:CE1	2.34	0.62
1:B:853:THR:HG22	1:B:855:ALA:H	1.65	0.61
2:E:34:ARG:HB3	2:E:139:ASN:HB3	1.81	0.61
1:A:527:LEU:HD23	4:A:1004:LMT:H61	1.81	0.61
1:B:490:ARG:HH22	1:B:722:PRO:HA	1.66	0.60
1:A:316:ASP:OD1	1:B:105:TRP:NE1	2.34	0.60
1:B:273:ALA:HB3	1:B:276:ILE:HD12	1.84	0.59
1:A:860:PRO:HB3	4:A:1004:LMT:H101	1.85	0.58
1:B:773:SER:HA	1:B:776:MET:HE2	1.85	0.58
2:E:7:ILE:HD11	2:E:129:LEU:HD23	1.86	0.57
1:B:137:ASP:OD1	1:B:150:ARG:NH1	2.37	0.57
1:A:246:ARG:NH1	1:A:298:ALA:O	2.38	0.56
1:B:443:SER:HB2	1:B:721:MET:HB3	1.87	0.56
1:A:303:SER:OG	1:A:306:GLU:OE1	2.22	0.56
1:A:129:ALA:O	1:A:133:ASN:ND2	2.36	0.55
2:E:600:GLN:NE2	2:E:657:THR:O	2.32	0.55
1:B:227:THR:HG22	1:B:264:PHE:HB2	1.90	0.54
2:E:309:ASN:OD1	2:E:310:GLU:N	2.39	0.54
2:E:209:VAL:HG13	2:E:365:LEU:HD21	1.90	0.54
2:E:513:VAL:HG21	2:E:547:LEU:HD11	1.90	0.54
2:E:223:LYS:HD3	2:E:271:LEU:HD22	1.90	0.54
1:A:469:LEU:O	1:A:473:GLU:HG3	2.08	0.53
2:E:363:CYS:SG	2:E:364:ASP:N	2.81	0.53
1:A:853:THR:HG22	1:A:855:ALA:H	1.74	0.53
1:A:523:ILE:HG13	1:A:840:GLN:HE21	1.72	0.52

Continued on next page...

Continued from previous page...

Atom-1	Atom-2	Interatomic distance (Å)	Clash overlap (Å)
1:A:851:LYS:NZ	4:A:1002:LMT:O6'	2.34	0.52
1:B:472:GLU:OE1	1:B:486:TYR:OH	2.20	0.52
1:A:80:ARG:HH12	1:A:216:ILE:HG21	1.74	0.52
1:A:45:ASP:OD2	2:E:261:ARG:NH1	2.42	0.52
2:E:126:ARG:HG3	2:E:127:LYS:N	2.25	0.52
2:E:64:GLN:HG2	2:E:76:GLN:HG3	1.90	0.52
2:E:573:SER:OG	2:E:574:ASN:N	2.43	0.52
2:E:623:ILE:HG22	2:E:668:VAL:HG22	1.92	0.52
2:E:598:ALA:HB3	2:E:684:VAL:HG12	1.92	0.52
2:E:293:ALA:O	2:E:415:GLY:N	2.38	0.51
1:A:389:ARG:NH2	1:A:396:ASP:OD2	2.37	0.51
2:E:62:THR:HG22	2:E:78:THR:HG23	1.93	0.51
1:B:229:VAL:HG22	1:B:266:PHE:HB2	1.91	0.51
1:A:287:THR:HG21	1:B:322:PRO:HG3	1.91	0.51
1:B:646:ARG:NH1	1:B:647:GLY:O	2.44	0.51
2:E:113:VAL:HG13	2:E:205:TRP:HB2	1.93	0.51
1:A:400:ALA:HB2	1:A:759:GLN:HG3	1.92	0.50
1:A:863:LEU:HD22	4:A:1004:LMT:H92	1.93	0.50
2:E:625:ILE:HG22	2:E:666:VAL:HG12	1.94	0.50
1:A:31:MET:HG3	2:E:649:CYS:SG	2.51	0.50
1:A:396:ASP:OD1	1:A:698:LYS:NZ	2.35	0.50
1:A:74:ARG:NH1	1:A:162:SER:OG	2.41	0.49
1:B:527:LEU:HD23	4:B:1105:LMT:H71	1.94	0.49
1:A:30:GLN:OE1	1:A:31:MET:N	2.46	0.49
2:E:479:LEU:HD13	2:E:495:VAL:HG22	1.94	0.49
2:E:185:GLU:HB2	2:E:188:VAL:HG23	1.95	0.49
2:E:638:ARG:O	2:E:639:PHE:CD1	2.66	0.48
2:E:14:ALA:O	2:E:18:ASN:HB2	2.12	0.48
1:B:430:LYS:HB2	1:B:430:LYS:HE2	1.67	0.48
1:B:494:GLY:O	1:B:498:ILE:HG12	2.14	0.48
2:E:5:LEU:HD11	2:E:55:ALA:HB1	1.95	0.48
1:B:400:ALA:HB2	1:B:759:GLN:HG3	1.95	0.48
1:A:651:HIS:CE1	1:A:653:LEU:HB2	2.49	0.47
2:E:509:LEU:HD22	2:E:531:LEU:HD21	1.96	0.47
1:A:33:GLU:HG3	1:A:34:PRO:HD2	1.96	0.47
2:E:593:LYS:HB2	2:E:607:SER:HB2	1.96	0.47
1:A:822:VAL:HG21	1:A:824:TYR:CZ	2.50	0.47
2:E:240:ALA:HB2	2:E:674:GLN:HG2	1.97	0.47
1:A:98:HIS:ND1	1:A:99:LEU:O	2.42	0.47
1:A:216:ILE:HA	1:A:219:LYS:HD3	1.97	0.47
1:A:337:PRO:HB2	1:B:199:LEU:HD21	1.97	0.46

Continued on next page...

Continued from previous page...

Atom-1	Atom-2	Interatomic distance (Å)	Clash overlap (Å)
1:B:590:LYS:HE2	5:B:1104:CLR:H112	1.98	0.46
2:E:379:THR:HB	2:E:382:VAL:HG23	1.97	0.46
1:A:120:LEU:HD21	1:A:138:ARG:HD3	1.97	0.46
1:B:890:ASP:OD1	1:B:891:ALA:N	2.49	0.46
1:A:375:THR:HG22	1:A:377:GLN:H	1.81	0.46
1:A:56:LYS:HB2	1:A:224:SER:HB3	1.97	0.46
1:B:80:ARG:NH1	1:B:216:ILE:HG13	2.30	0.46
2:E:659:VAL:HA	2:E:684:VAL:HG23	1.98	0.46
1:A:146:ARG:NH2	1:A:236:PHE:O	2.48	0.46
1:B:518:ARG:O	1:B:522:GLU:HG2	2.16	0.46
1:B:651:HIS:CD2	1:B:653:LEU:HB2	2.51	0.46
1:A:681:GLU:HB2	4:A:1004:LMT:H122	1.98	0.45
1:A:339:GLN:HG2	1:A:343:LEU:HD13	1.99	0.45
1:A:646:ARG:NH1	1:A:647:GLY:O	2.50	0.45
4:B:1101:LMT:O6'	4:B:1101:LMT:O2B	2.32	0.45
2:E:570:HIS:CD2	2:E:573:SER:H	2.34	0.45
2:E:446:GLU:O	2:E:449:GLU:HG3	2.17	0.45
1:A:212:SER:O	1:A:216:ILE:HG23	2.17	0.45
1:B:253:LEU:HB2	1:B:262:ILE:HD12	1.99	0.44
2:E:505:LYS:HB2	2:E:570:HIS:HE1	1.83	0.44
1:B:530:LEU:HD11	4:B:1103:LMT:H112	1.98	0.44
1:A:890:ASP:HB3	1:A:893:ALA:HB3	2.00	0.44
1:B:177:VAL:HG22	1:B:233:ARG:HD2	2.00	0.44
2:E:570:HIS:HD2	2:E:573:SER:HB3	1.82	0.44
1:B:892:LYS:HE3	1:B:892:LYS:HB2	1.73	0.44
2:E:389:ILE:HG22	2:E:436:LYS:HD3	2.00	0.44
4:A:1002:LMT:O4'	4:A:1002:LMT:O6B	2.33	0.44
2:E:455:LYS:HE2	2:E:455:LYS:HB2	1.91	0.44
1:B:523:ILE:HG13	1:B:840:GLN:HE21	1.83	0.43
1:B:174:LYS:HB3	1:B:174:LYS:HE2	1.86	0.43
1:A:505:VAL:HG11	1:A:707:LEU:HD12	1.98	0.43
1:A:815:PRO:HG2	1:A:818:TYR:HD2	1.83	0.43
1:A:518:ARG:O	1:A:522:GLU:HG2	2.17	0.43
1:A:740:VAL:HB	1:A:755:GLU:HG3	2.00	0.43
1:B:822:VAL:HG21	1:B:824:TYR:CZ	2.54	0.43
2:E:488:ARG:HG3	2:E:614:LEU:HD23	1.99	0.43
1:A:597:PHE:O	1:A:602:ARG:NH1	2.51	0.43
1:B:597:PHE:O	1:B:602:ARG:NH1	2.52	0.43
5:A:1003:CLR:H183	5:A:1003:CLR:H20	1.74	0.43
1:A:273:ALA:HB3	1:A:276:ILE:HD12	2.00	0.43
1:A:443:SER:HB2	1:A:721:MET:HB3	1.99	0.43

Continued on next page...

Continued from previous page...

Atom-1	Atom-2	Interatomic distance (Å)	Clash overlap (Å)
1:B:530:LEU:HD23	1:B:848:TRP:HZ3	1.83	0.42
1:B:544:PHE:CD1	1:B:571:ALA:HB1	2.54	0.42
1:B:815:PRO:HG2	1:B:818:TYR:HD2	1.84	0.42
1:B:870:ARG:NE	1:B:887:ASP:OD2	2.43	0.42
1:B:453:LEU:HD23	1:B:453:LEU:HA	1.85	0.42
1:B:370:ASP:OD1	1:B:370:ASP:N	2.52	0.42
2:E:140:PRO:HG2	2:E:159:LEU:HD22	2.02	0.42
1:B:234:ALA:HB3	1:B:237:LEU:HD12	2.02	0.41
1:A:708:LEU:HD23	1:A:708:LEU:HA	1.96	0.41
5:B:1104:CLR:H183	5:B:1104:CLR:H20	1.66	0.41
5:A:1003:CLR:H193	5:A:1003:CLR:H111	1.79	0.41
1:B:160:LYS:HD3	1:B:160:LYS:HA	1.87	0.41
2:E:477:LEU:HB3	2:E:497:LEU:HD23	2.02	0.41
1:A:581:THR:OG1	1:A:617:MET:HG3	2.21	0.41
5:A:1003:CLR:H191	5:A:1003:CLR:H8	1.77	0.41
2:E:140:PRO:HA	2:E:147:VAL:O	2.21	0.41
1:A:146:ARG:HH11	1:A:148:GLN:NE2	2.19	0.41
1:A:698:LYS:HB2	1:A:758:GLU:OE1	2.21	0.41
1:B:81:TRP:HA	1:B:84:LEU:O	2.21	0.41
1:A:308:LEU:O	1:A:312:GLU:HG2	2.21	0.41
2:E:246:ARG:HA	2:E:246:ARG:HD3	1.90	0.41
1:A:588:LEU:HD23	1:A:588:LEU:HA	1.95	0.40
1:B:329:GLU:N	1:B:329:GLU:OE1	2.52	0.40
2:E:168:LEU:HD22	2:E:326:PHE:CZ	2.56	0.40
2:E:444:GLU:O	2:E:448:LEU:HD23	2.21	0.40
1:A:227:THR:HG23	1:A:264:PHE:HB2	2.03	0.40
1:B:859:LEU:HD21	4:B:1105:LMT:H81	2.03	0.40
2:E:366:VAL:HG11	2:E:385:LEU:HD12	2.02	0.40
1:B:55:HIS:O	1:B:55:HIS:ND1	2.52	0.40

There are no symmetry-related clashes.

5.3 Torsion angles [i](#)

5.3.1 Protein backbone [i](#)

In the following table, the Percentiles column shows the percent Ramachandran outliers of the chain as a percentile score with respect to all PDB entries followed by that with respect to all EM entries.

The Analysed column shows the number of residues for which the backbone conformation was analysed, and the total number of residues.

Mol	Chain	Analysed	Favoured	Allowed	Outliers	Percentiles	
1	A	844/911 (93%)	812 (96%)	32 (4%)	0	100	100
1	B	819/911 (90%)	804 (98%)	15 (2%)	0	100	100
2	E	659/691 (95%)	641 (97%)	18 (3%)	0	100	100
All	All	2322/2513 (92%)	2257 (97%)	65 (3%)	0	100	100

There are no Ramachandran outliers to report.

5.3.2 Protein sidechains [i](#)

In the following table, the Percentiles column shows the percent sidechain outliers of the chain as a percentile score with respect to all PDB entries followed by that with respect to all EM entries.

The Analysed column shows the number of residues for which the sidechain conformation was analysed, and the total number of residues.

Mol	Chain	Analysed	Rotameric	Outliers	Percentiles	
1	A	721/786 (92%)	721 (100%)	0	100	100
1	B	708/786 (90%)	708 (100%)	0	100	100
2	E	569/588 (97%)	569 (100%)	0	100	100
All	All	1998/2160 (92%)	1998 (100%)	0	100	100

There are no protein residues with a non-rotameric sidechain to report.

Sometimes sidechains can be flipped to improve hydrogen bonding and reduce clashes. All (1) such sidechains are listed below:

Mol	Chain	Res	Type
2	E	570	HIS

5.3.3 RNA [i](#)

There are no RNA molecules in this entry.

5.4 Non-standard residues in protein, DNA, RNA chains [i](#)

There are no non-standard protein/DNA/RNA residues in this entry.

5.5 Carbohydrates [i](#)

There are no monosaccharides in this entry.

5.6 Ligand geometry [i](#)

9 ligands are modelled in this entry.

In the following table, the Counts columns list the number of bonds (or angles) for which Mogul statistics could be retrieved, the number of bonds (or angles) that are observed in the model and the number of bonds (or angles) that are defined in the Chemical Component Dictionary. The Link column lists molecule types, if any, to which the group is linked. The Z score for a bond length (or angle) is the number of standard deviations the observed value is removed from the expected value. A bond length (or angle) with $|Z| > 2$ is considered an outlier worth inspection. RMSZ is the root-mean-square of all Z scores of the bond lengths (or angles).

Mol	Type	Chain	Res	Link	Bond lengths			Bond angles		
					Counts	RMSZ	# Z > 2	Counts	RMSZ	# Z > 2
4	LMT	B	1101	-	36,36,36	0.75	0	47,47,47	0.87	1 (2%)
3	NAG	A	1001	1	14,14,15	0.22	0	17,19,21	0.41	0
3	NAG	B	1102	1	14,14,15	0.20	0	17,19,21	0.43	0
4	LMT	A	1002	-	36,36,36	0.76	0	47,47,47	0.80	2 (4%)
4	LMT	A	1004	-	36,36,36	0.76	0	47,47,47	0.85	1 (2%)
4	LMT	B	1103	-	36,36,36	0.77	0	47,47,47	0.87	1 (2%)
4	LMT	B	1105	-	36,36,36	0.75	0	47,47,47	0.80	2 (4%)
5	CLR	B	1104	-	31,31,31	3.49	10 (32%)	48,48,48	1.74	11 (22%)
5	CLR	A	1003	-	31,31,31	3.52	10 (32%)	48,48,48	1.74	13 (27%)

In the following table, the Chirals column lists the number of chiral outliers, the number of chiral centers analysed, the number of these observed in the model and the number defined in the Chemical Component Dictionary. Similar counts are reported in the Torsion and Rings columns. '-' means no outliers of that kind were identified.

Mol	Type	Chain	Res	Link	Chirals	Torsions	Rings
4	LMT	B	1101	-	-	12/21/61/61	0/2/2/2
3	NAG	A	1001	1	-	2/6/23/26	0/1/1/1
3	NAG	B	1102	1	-	2/6/23/26	0/1/1/1
4	LMT	A	1002	-	-	14/21/61/61	0/2/2/2
4	LMT	A	1004	-	-	9/21/61/61	0/2/2/2
4	LMT	B	1103	-	-	7/21/61/61	0/2/2/2
4	LMT	B	1105	-	-	12/21/61/61	0/2/2/2

Continued on next page...

Continued from previous page...

Mol	Type	Chain	Res	Link	Chirals	Torsions	Rings
5	CLR	B	1104	-	-	5/10/68/68	0/4/4/4
5	CLR	A	1003	-	-	6/10/68/68	0/4/4/4

All (20) bond length outliers are listed below:

Mol	Chain	Res	Type	Atoms	Z	Observed(Å)	Ideal(Å)
5	A	1003	CLR	C10-C9	-9.89	1.39	1.56
5	B	1104	CLR	C10-C9	-9.58	1.40	1.56
5	B	1104	CLR	C11-C9	8.04	1.67	1.53
5	A	1003	CLR	C11-C9	7.93	1.67	1.53
5	A	1003	CLR	C6-C5	6.65	1.47	1.33
5	A	1003	CLR	C16-C15	6.55	1.72	1.54
5	B	1104	CLR	C6-C5	6.55	1.47	1.33
5	B	1104	CLR	C16-C15	6.50	1.71	1.54
5	B	1104	CLR	C7-C8	-6.28	1.42	1.53
5	A	1003	CLR	C7-C8	-6.19	1.42	1.53
5	B	1104	CLR	C10-C5	4.92	1.62	1.52
5	A	1003	CLR	C10-C5	4.77	1.62	1.52
5	A	1003	CLR	C8-C9	4.46	1.62	1.53
5	B	1104	CLR	C8-C9	4.36	1.61	1.53
5	A	1003	CLR	C7-C6	3.71	1.58	1.50
5	B	1104	CLR	C7-C6	3.62	1.58	1.50
5	A	1003	CLR	C12-C13	-3.54	1.47	1.54
5	B	1104	CLR	C12-C13	-3.48	1.47	1.54
5	B	1104	CLR	C13-C14	-3.03	1.49	1.55
5	A	1003	CLR	C13-C14	-3.01	1.49	1.55

All (31) bond angle outliers are listed below:

Mol	Chain	Res	Type	Atoms	Z	Observed(°)	Ideal(°)
5	A	1003	CLR	C13-C17-C20	-4.80	111.96	119.49
5	B	1104	CLR	C13-C17-C20	-4.59	112.29	119.49
5	B	1104	CLR	C17-C13-C14	4.20	105.05	100.07
5	A	1003	CLR	C15-C14-C8	-4.10	112.33	119.08
5	B	1104	CLR	C15-C14-C8	-4.04	112.43	119.08
5	B	1104	CLR	C7-C6-C5	-3.65	118.33	125.06
5	A	1003	CLR	C17-C13-C14	3.57	104.31	100.07
5	A	1003	CLR	C7-C6-C5	-3.38	118.82	125.06
4	A	1004	LMT	C1B-O1B-C4'	-3.22	110.00	117.96
5	A	1003	CLR	C12-C13-C17	-2.84	112.32	116.57
5	A	1003	CLR	C10-C5-C6	-2.78	118.65	122.90
5	B	1104	CLR	C11-C9-C8	-2.75	107.80	111.75

Continued on next page...

Continued from previous page...

Mol	Chain	Res	Type	Atoms	Z	Observed(°)	Ideal(°)
5	A	1003	CLR	C21-C20-C17	-2.71	108.77	112.92
5	B	1104	CLR	C12-C13-C17	-2.66	112.59	116.57
4	B	1103	LMT	C1B-O1B-C4'	-2.66	111.39	117.96
5	A	1003	CLR	C11-C9-C10	-2.61	109.64	113.08
4	B	1101	LMT	C1'-O5'-C5'	2.58	118.75	113.69
5	A	1003	CLR	C10-C9-C8	-2.52	108.95	112.73
5	B	1104	CLR	C10-C5-C6	-2.47	119.12	122.90
5	B	1104	CLR	C16-C15-C14	-2.41	100.36	105.13
5	B	1104	CLR	C4-C5-C10	2.38	119.58	116.42
4	A	1002	LMT	C1'-O5'-C5'	2.35	118.30	113.69
5	B	1104	CLR	C11-C9-C10	-2.35	109.99	113.08
4	B	1105	LMT	C1'-O5'-C5'	2.26	118.12	113.69
5	B	1104	CLR	C15-C14-C13	2.15	106.43	103.84
4	B	1105	LMT	C1B-O1B-C4'	-2.13	112.68	117.96
4	A	1002	LMT	C1B-O1B-C4'	-2.10	112.77	117.96
5	A	1003	CLR	C16-C15-C14	-2.08	101.01	105.13
5	A	1003	CLR	C11-C12-C13	-2.08	109.22	112.78
5	A	1003	CLR	C15-C14-C13	2.04	106.31	103.84
5	A	1003	CLR	C1-C2-C3	2.03	113.07	110.47

There are no chirality outliers.

All (69) torsion outliers are listed below:

Mol	Chain	Res	Type	Atoms
4	A	1002	LMT	C2-C1-O1'-C1'
4	B	1103	LMT	C2'-C1'-O1'-C1
4	B	1103	LMT	O5'-C1'-O1'-C1
4	B	1105	LMT	C2'-C1'-O1'-C1
4	B	1105	LMT	O5'-C1'-O1'-C1
4	B	1105	LMT	C2-C1-O1'-C1'
5	A	1003	CLR	C13-C17-C20-C21
5	A	1003	CLR	C16-C17-C20-C22
5	A	1003	CLR	C16-C17-C20-C21
5	B	1104	CLR	C16-C17-C20-C21
5	B	1104	CLR	C13-C17-C20-C21
5	A	1003	CLR	C13-C17-C20-C22
5	B	1104	CLR	C13-C17-C20-C22
4	A	1004	LMT	C4B-C5B-C6B-O6B
4	B	1105	LMT	C4'-C5'-C6'-O6'
4	B	1101	LMT	O5B-C5B-C6B-O6B
4	B	1103	LMT	O5'-C5'-C6'-O6'
4	B	1101	LMT	C3'-C4'-O1B-C1B

Continued on next page...

Continued from previous page...

Mol	Chain	Res	Type	Atoms
4	A	1002	LMT	O5B-C5B-C6B-O6B
4	A	1002	LMT	O5'-C5'-C6'-O6'
5	B	1104	CLR	C16-C17-C20-C22
4	B	1101	LMT	O5'-C5'-C6'-O6'
4	B	1105	LMT	O5'-C5'-C6'-O6'
4	A	1004	LMT	C11-C10-C9-C8
4	A	1004	LMT	O5B-C5B-C6B-O6B
4	B	1101	LMT	C4B-C5B-C6B-O6B
4	B	1101	LMT	C4'-C5'-C6'-O6'
3	A	1001	NAG	C8-C7-N2-C2
3	A	1001	NAG	O7-C7-N2-C2
3	B	1102	NAG	C8-C7-N2-C2
3	B	1102	NAG	O7-C7-N2-C2
4	B	1103	LMT	O1'-C1-C2-C3
4	A	1004	LMT	O1'-C1-C2-C3
4	B	1101	LMT	O1'-C1-C2-C3
4	B	1105	LMT	C3'-C4'-O1B-C1B
4	B	1103	LMT	C4'-C5'-C6'-O6'
5	A	1003	CLR	C20-C22-C23-C24
4	A	1004	LMT	O5'-C5'-C6'-O6'
4	A	1002	LMT	C3'-C4'-O1B-C1B
4	B	1103	LMT	C2-C3-C4-C5
4	B	1105	LMT	C2-C3-C4-C5
4	A	1002	LMT	C2'-C1'-O1'-C1
4	B	1103	LMT	C11-C10-C9-C8
4	A	1002	LMT	O5'-C1'-O1'-C1
4	A	1002	LMT	O1'-C1-C2-C3
4	B	1105	LMT	C5-C6-C7-C8
4	A	1002	LMT	C7-C8-C9-C10
5	B	1104	CLR	C20-C22-C23-C24
4	A	1002	LMT	C5'-C4'-O1B-C1B
4	B	1105	LMT	C5'-C4'-O1B-C1B
4	B	1101	LMT	C7-C8-C9-C10
4	A	1002	LMT	C4B-C5B-C6B-O6B
4	B	1101	LMT	C1-C2-C3-C4
4	A	1002	LMT	C9-C10-C11-C12
4	B	1101	LMT	C11-C10-C9-C8
5	A	1003	CLR	C21-C20-C22-C23
4	B	1101	LMT	C5'-C4'-O1B-C1B
4	A	1004	LMT	C2-C3-C4-C5
4	A	1002	LMT	C4'-C5'-C6'-O6'
4	B	1101	LMT	C9-C10-C11-C12

Continued on next page...

Continued from previous page...

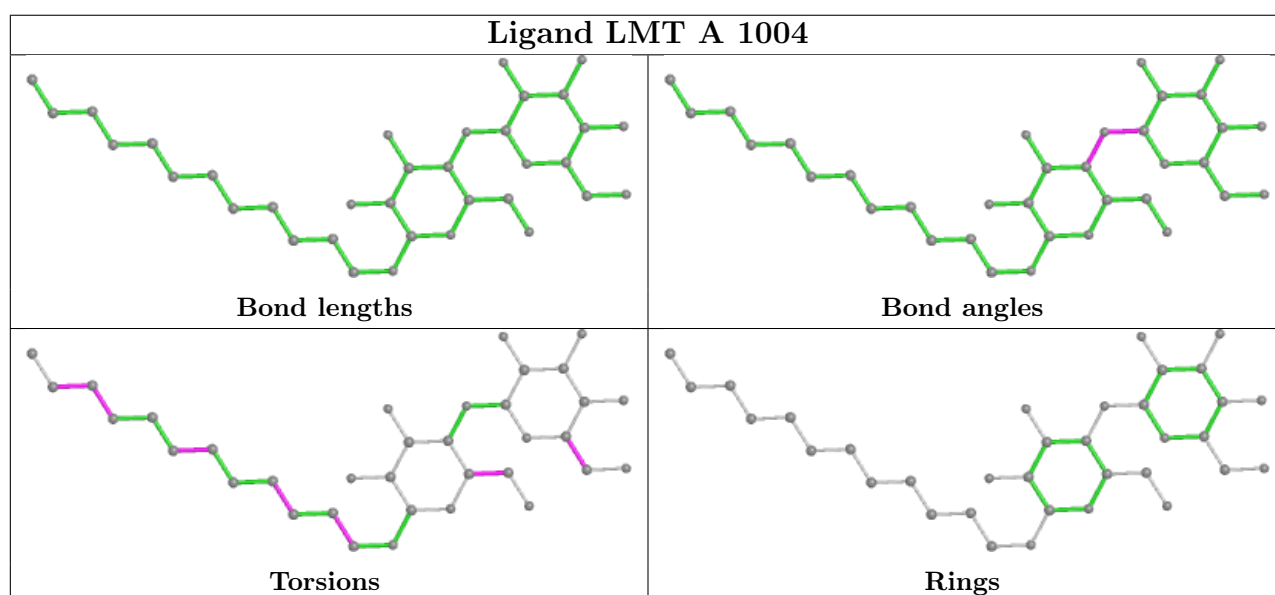
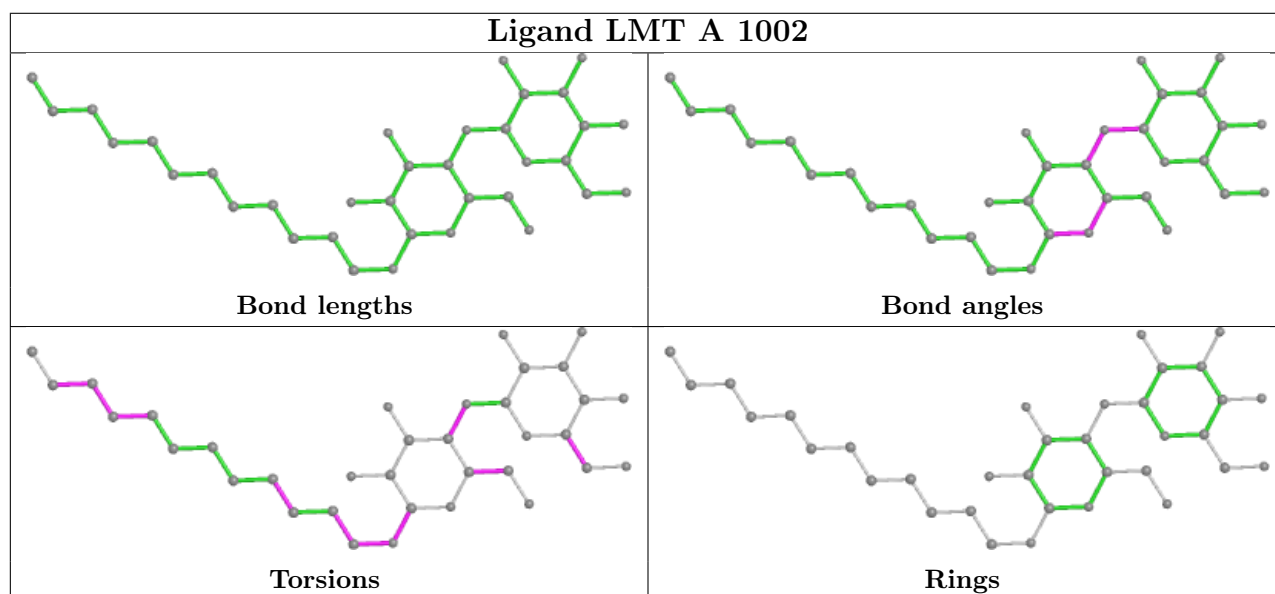
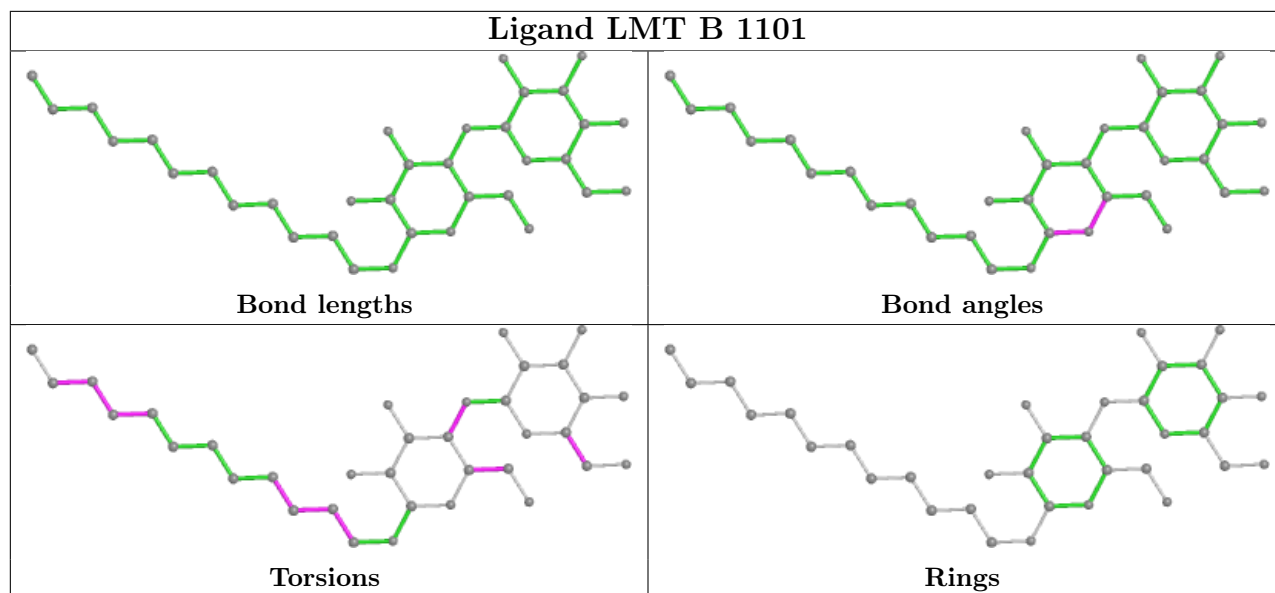
Mol	Chain	Res	Type	Atoms
4	A	1002	LMT	C11-C10-C9-C8
4	B	1105	LMT	C9-C10-C11-C12
4	A	1004	LMT	C5-C6-C7-C8
4	A	1004	LMT	C9-C10-C11-C12
4	B	1105	LMT	C4-C5-C6-C7
4	B	1101	LMT	C2-C3-C4-C5
4	A	1004	LMT	C4'-C5'-C6'-O6'
4	B	1105	LMT	C1-C2-C3-C4
4	A	1002	LMT	C2-C3-C4-C5

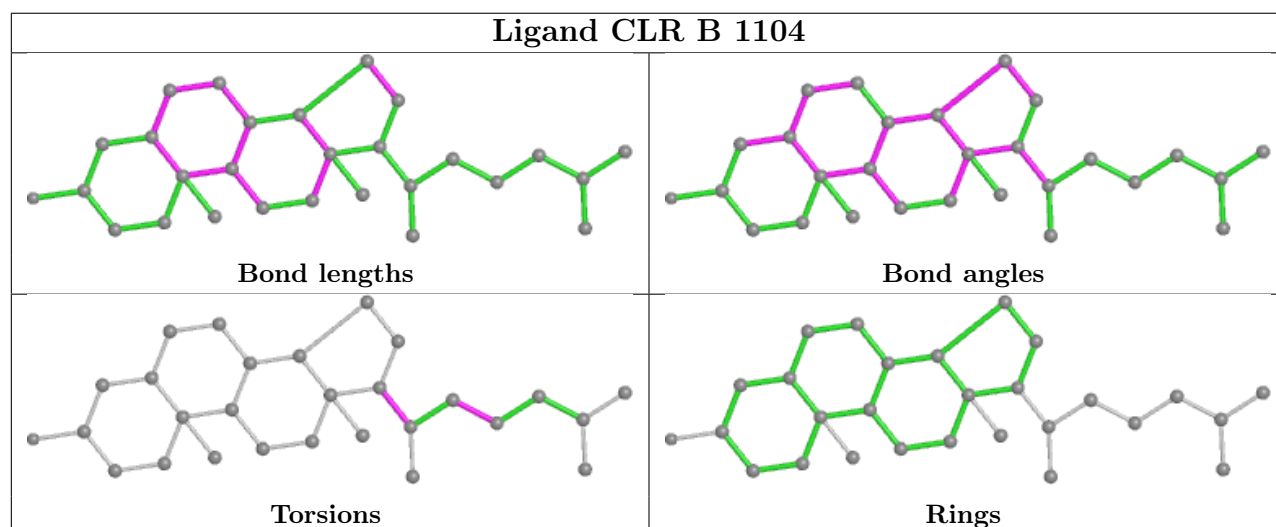
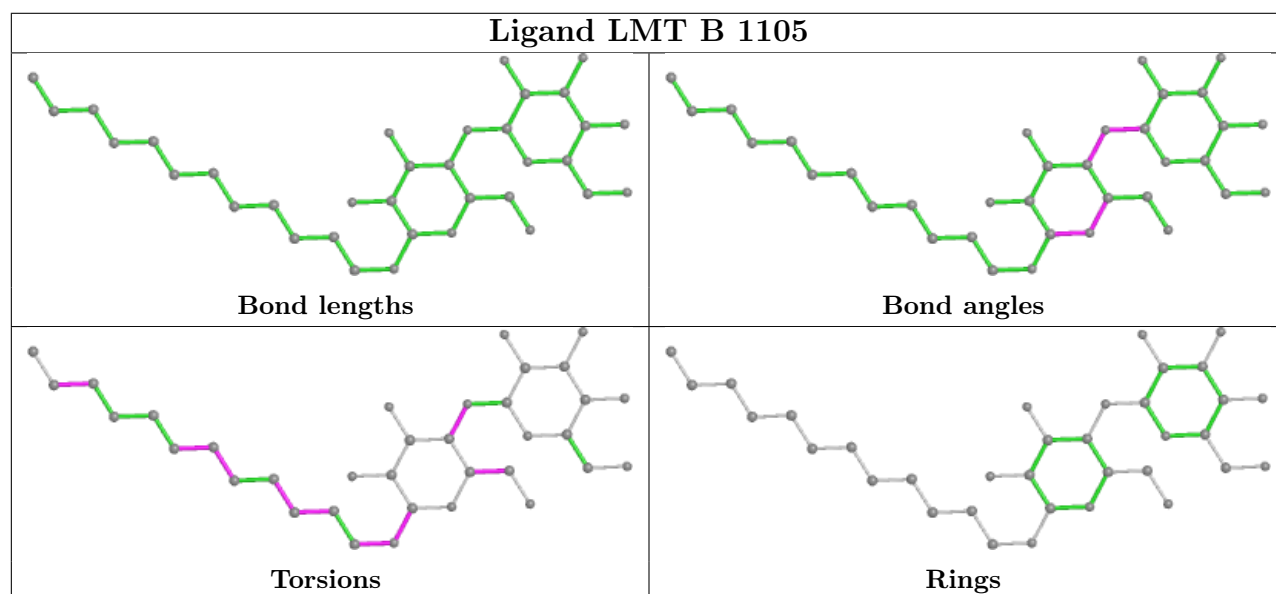
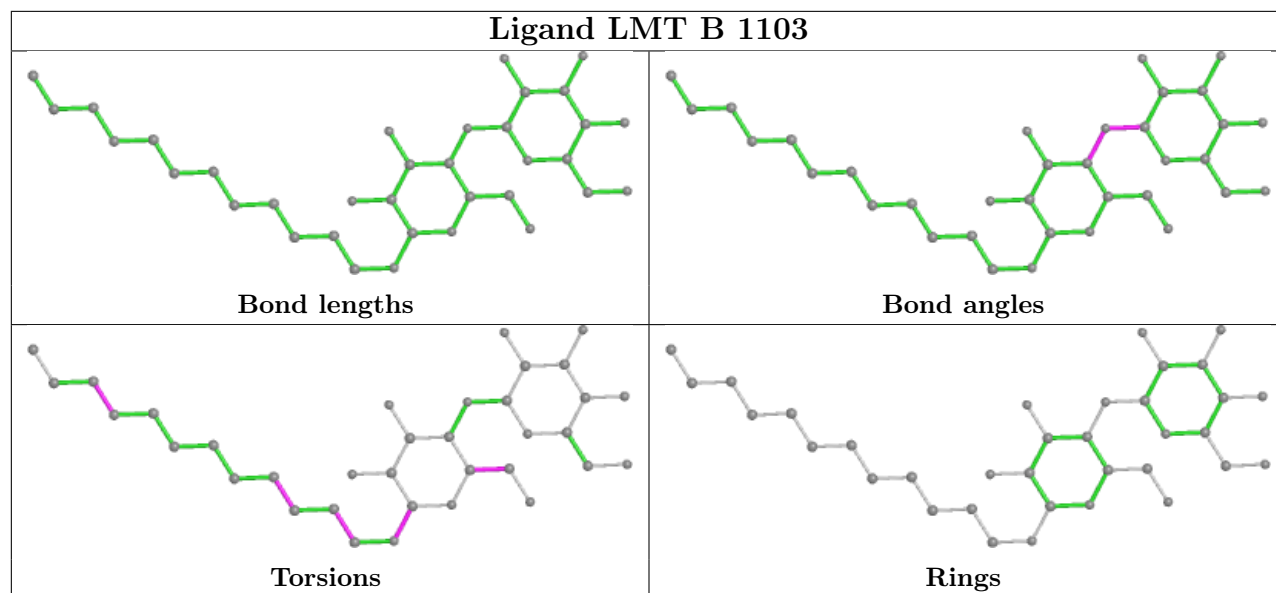
There are no ring outliers.

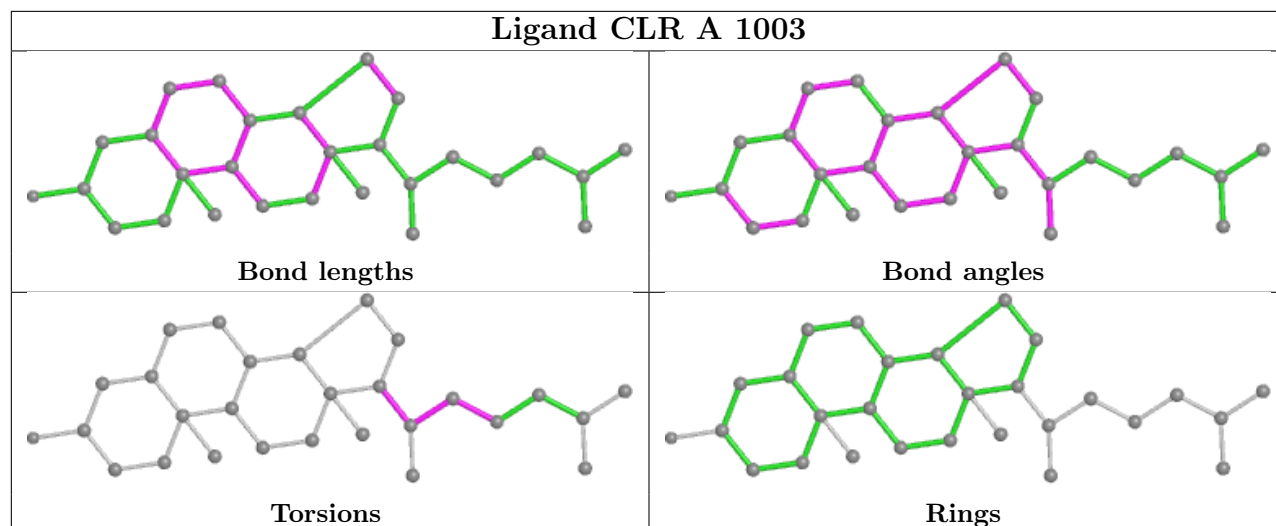
7 monomers are involved in 16 short contacts:

Mol	Chain	Res	Type	Clashes	Symm-Clashes
4	B	1101	LMT	1	0
4	A	1002	LMT	2	0
4	A	1004	LMT	4	0
4	B	1103	LMT	2	0
4	B	1105	LMT	2	0
5	B	1104	CLR	2	0
5	A	1003	CLR	3	0

The following is a two-dimensional graphical depiction of Mogul quality analysis of bond lengths, bond angles, torsion angles, and ring geometry for all instances of the Ligand of Interest. In addition, ligands with molecular weight > 250 and outliers as shown on the validation Tables will also be included. For torsion angles, if less than 5% of the Mogul distribution of torsion angles is within 10 degrees of the torsion angle in question, then that torsion angle is considered an outlier. Any bond that is central to one or more torsion angles identified as an outlier by Mogul will be highlighted in the graph. For rings, the root-mean-square deviation (RMSD) between the ring in question and similar rings identified by Mogul is calculated over all ring torsion angles. If the average RMSD is greater than 60 degrees and the minimal RMSD between the ring in question and any Mogul-identified rings is also greater than 60 degrees, then that ring is considered an outlier. The outliers are highlighted in purple. The color gray indicates Mogul did not find sufficient equivalents in the CSD to analyse the geometry.







5.7 Other polymers [i](#)

There are no such residues in this entry.

5.8 Polymer linkage issues [i](#)

There are no chain breaks in this entry.

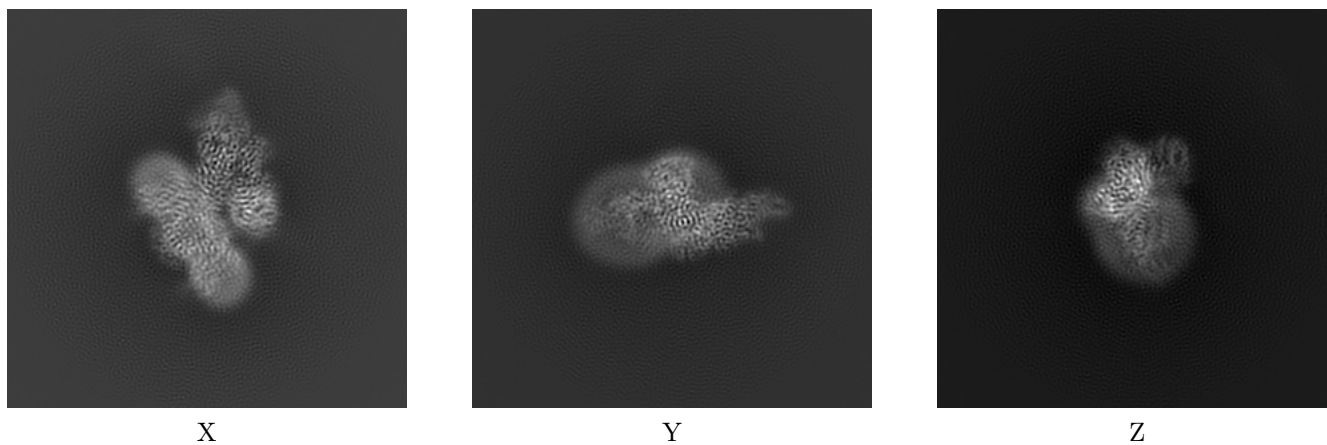
6 Map visualisation [i](#)

This section contains visualisations of the EMDB entry EMD-26142. These allow visual inspection of the internal detail of the map and identification of artifacts.

No raw map or half-maps were deposited for this entry and therefore no images, graphs, etc. pertaining to the raw map can be shown.

6.1 Orthogonal projections [i](#)

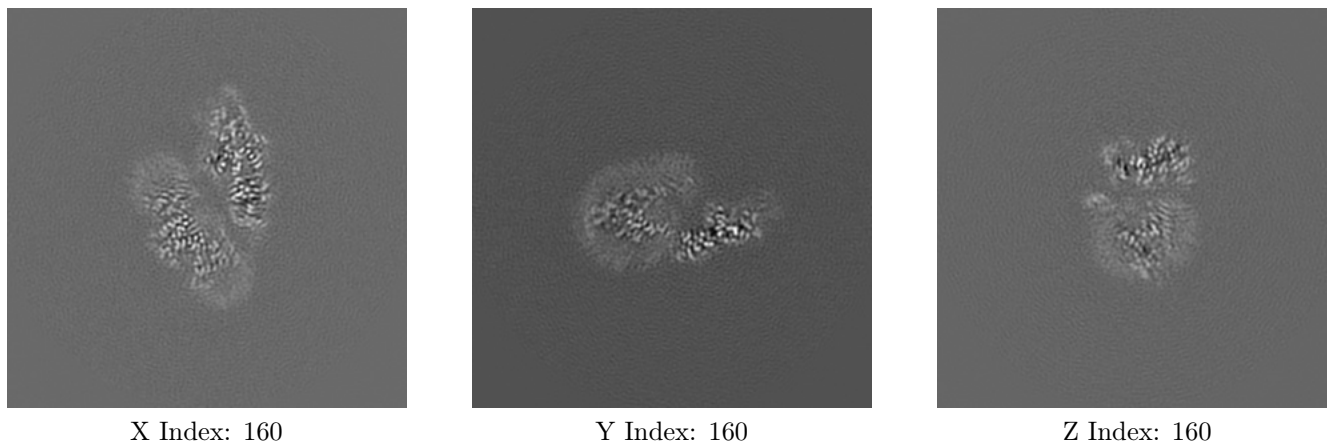
6.1.1 Primary map



The images above show the map projected in three orthogonal directions.

6.2 Central slices [i](#)

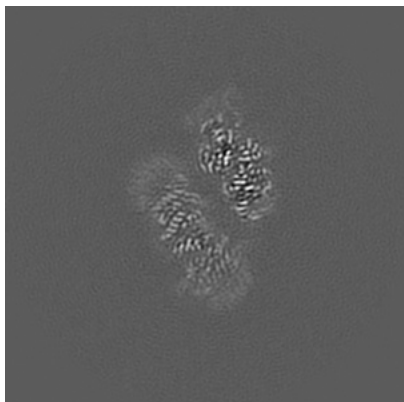
6.2.1 Primary map



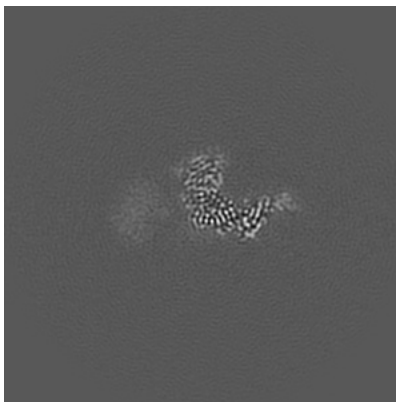
The images above show central slices of the map in three orthogonal directions.

6.3 Largest variance slices [i](#)

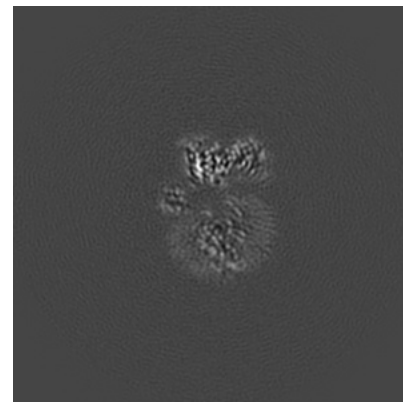
6.3.1 Primary map



X Index: 152



Y Index: 192

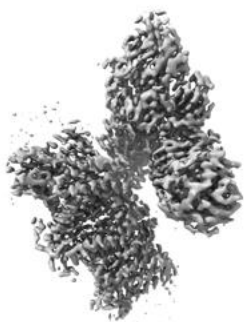


Z Index: 166

The images above show the largest variance slices of the map in three orthogonal directions.

6.4 Orthogonal surface views [i](#)

6.4.1 Primary map



X



Y



Z

The images above show the 3D surface view of the map at the recommended contour level 0.028. These images, in conjunction with the slice images, may facilitate assessment of whether an appropriate contour level has been provided.

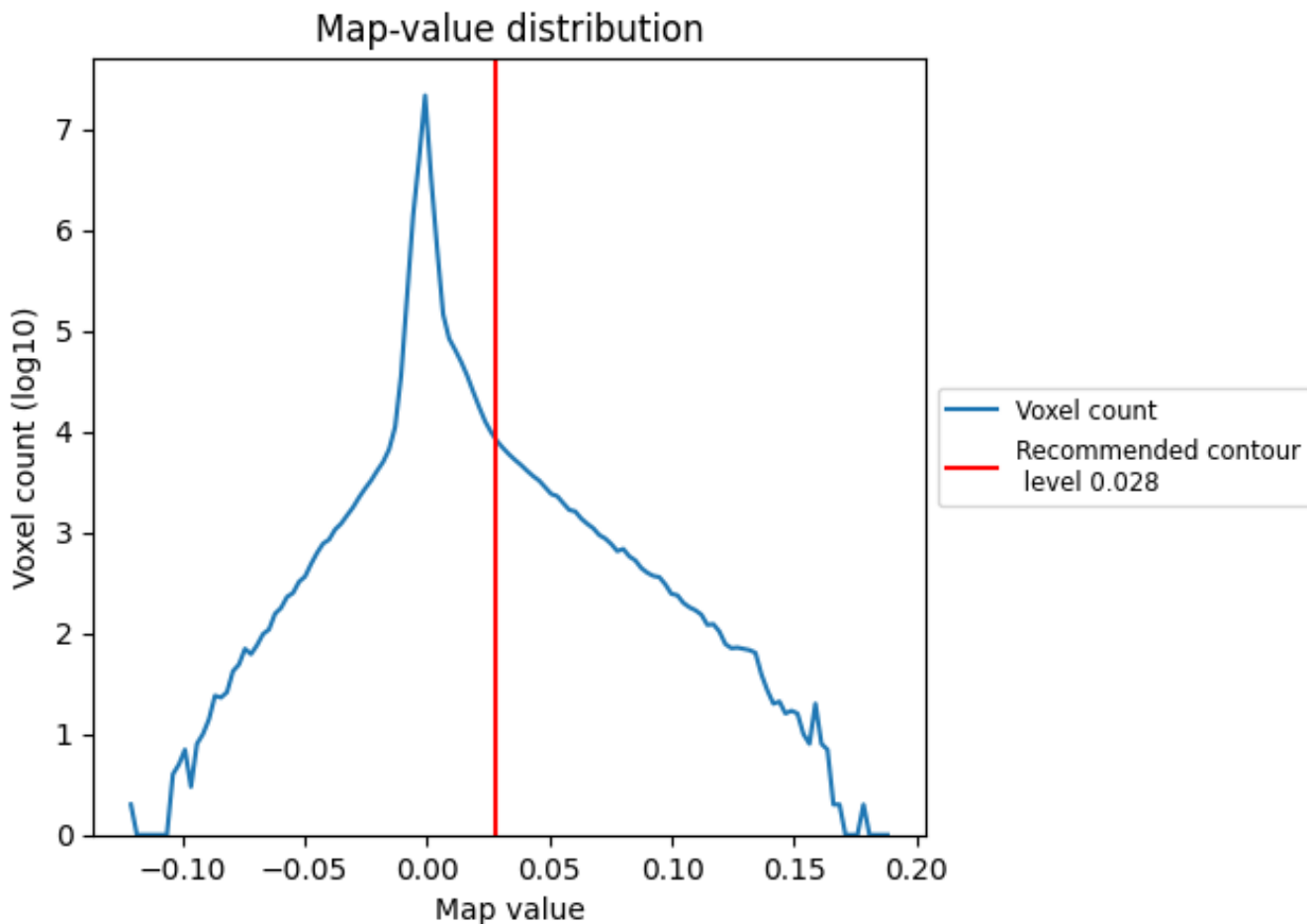
6.5 Mask visualisation

This section was not generated. No masks/segmentation were deposited.

7 Map analysis [i](#)

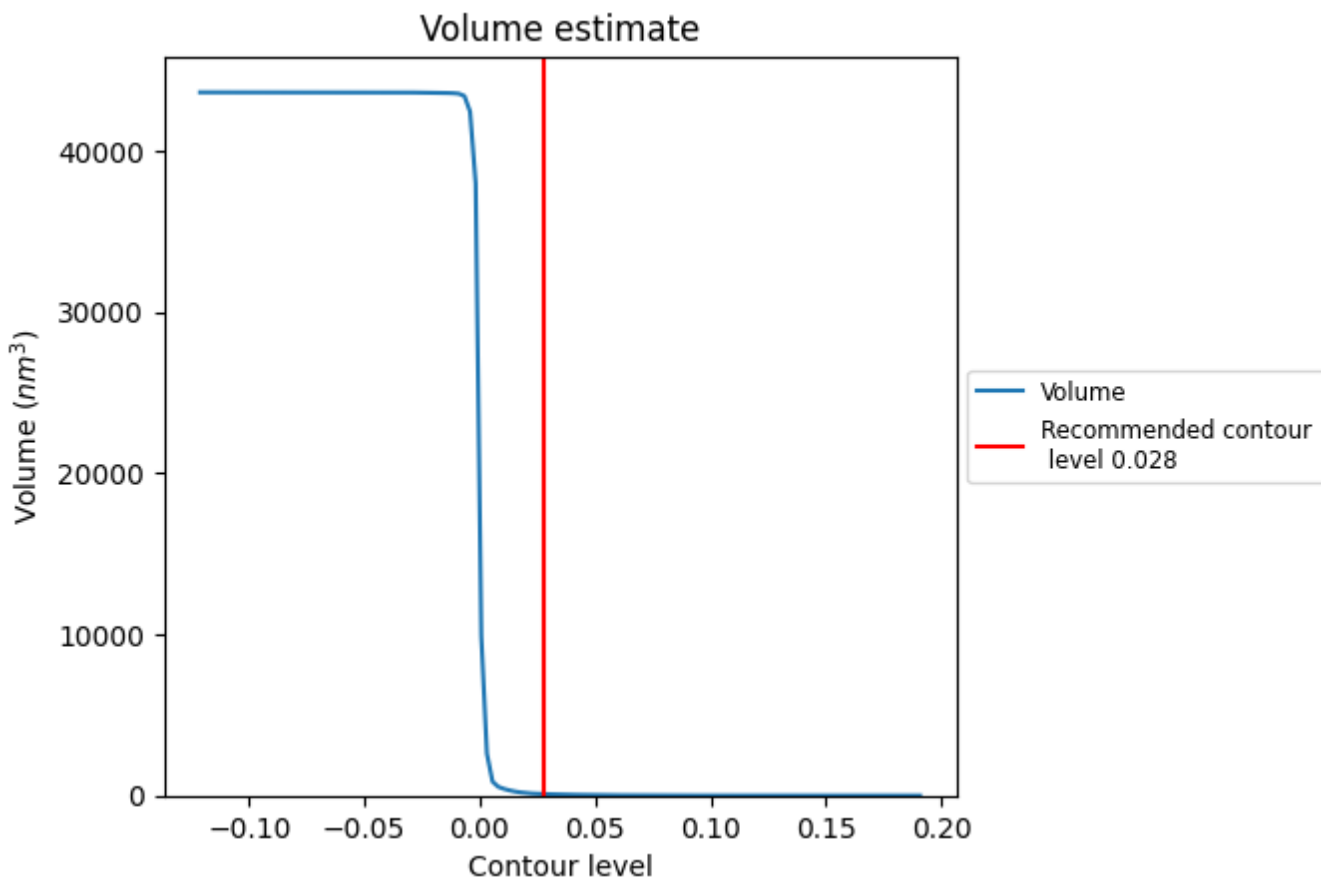
This section contains the results of statistical analysis of the map.

7.1 Map-value distribution [i](#)



The map-value distribution is plotted in 128 intervals along the x-axis. The y-axis is logarithmic. A spike in this graph at zero usually indicates that the volume has been masked.

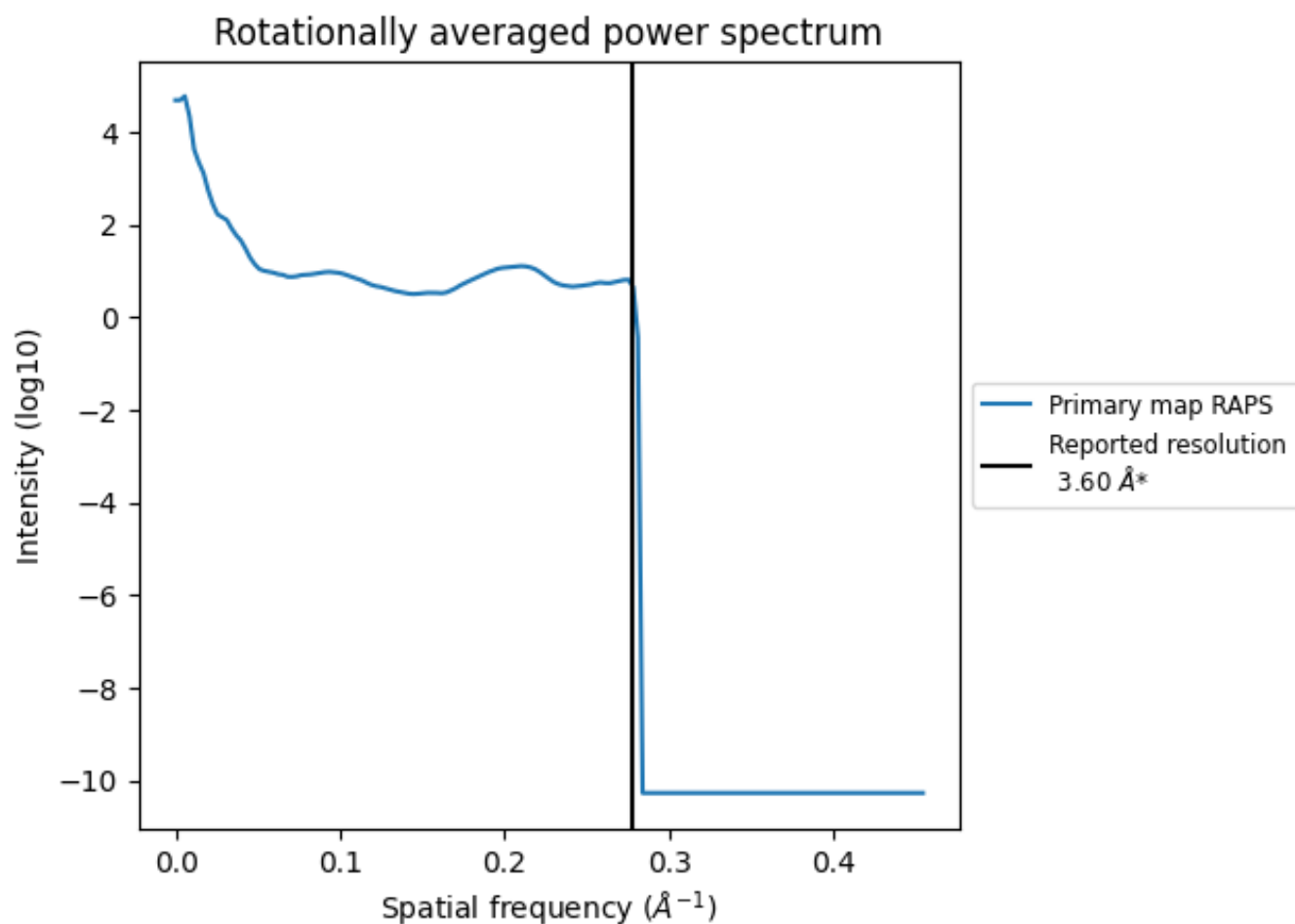
7.2 Volume estimate [i](#)



The volume at the recommended contour level is 93 nm³; this corresponds to an approximate mass of 84 kDa.

The volume estimate graph shows how the enclosed volume varies with the contour level. The recommended contour level is shown as a vertical line and the intersection between the line and the curve gives the volume of the enclosed surface at the given level.

7.3 Rotationally averaged power spectrum [\(i\)](#)



*Reported resolution corresponds to spatial frequency of 0.278 Å⁻¹

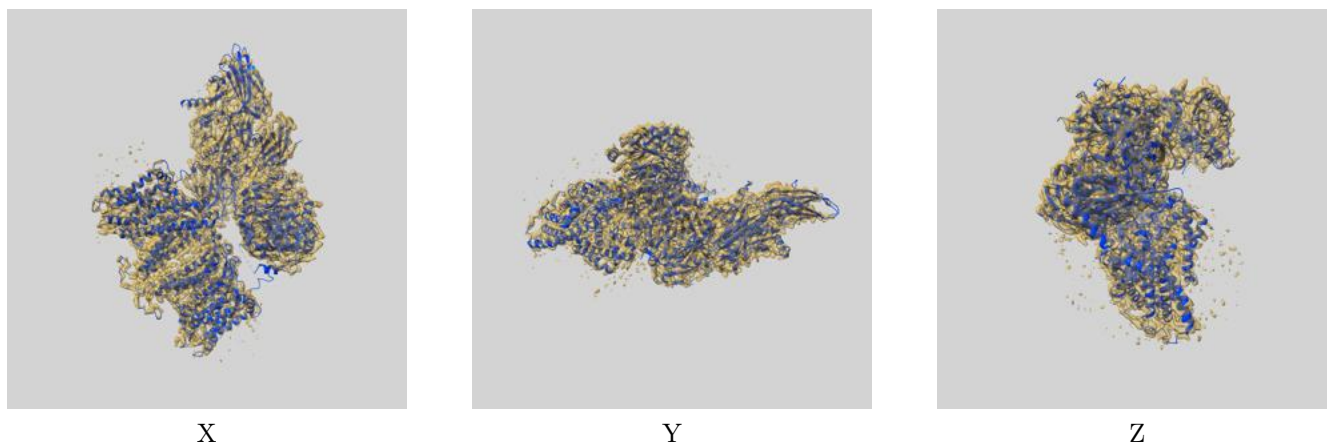
8 Fourier-Shell correlation

This section was not generated. No FSC curve or half-maps provided.

9 Map-model fit [i](#)

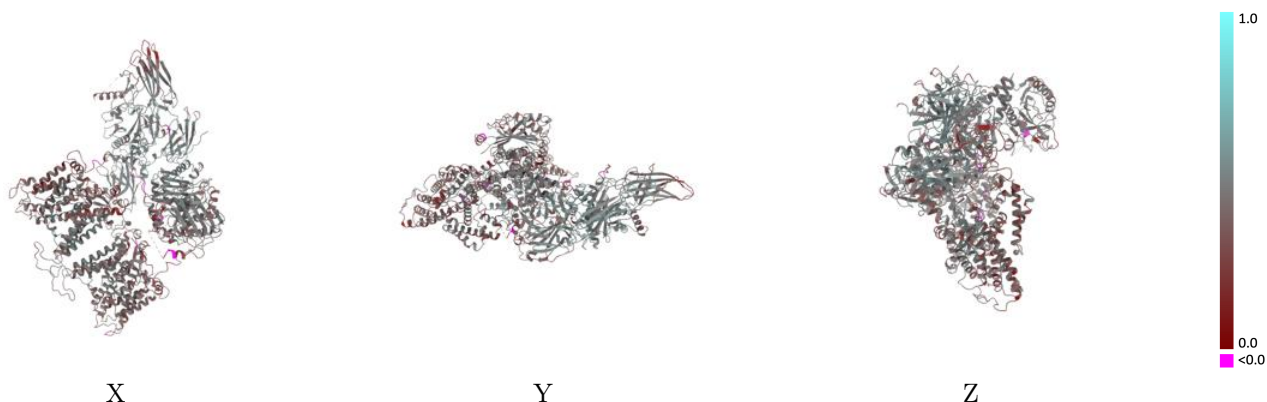
This section contains information regarding the fit between EMDB map EMD-26142 and PDB model 7TVZ. Per-residue inclusion information can be found in section 3 on page 6.

9.1 Map-model overlay [i](#)



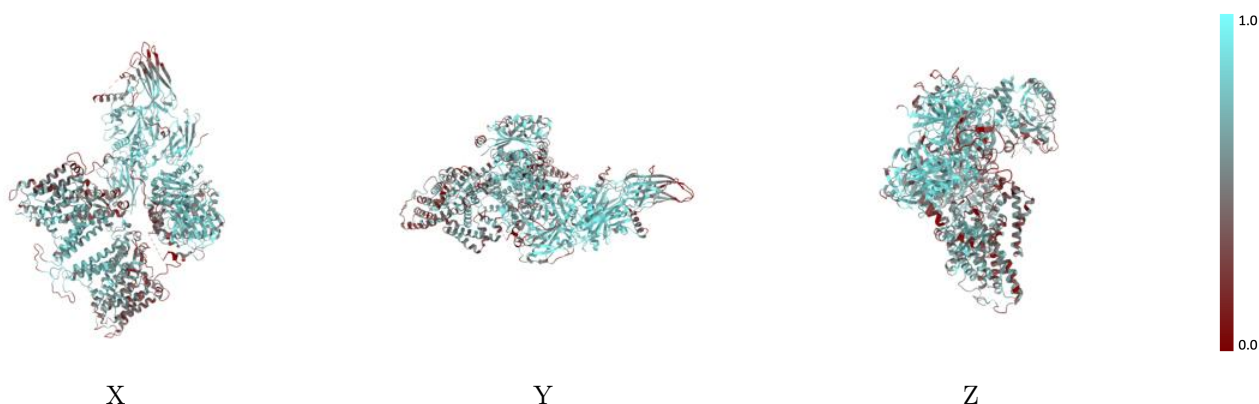
The images above show the 3D surface view of the map at the recommended contour level 0.028 at 50% transparency in yellow overlaid with a ribbon representation of the model coloured in blue. These images allow for the visual assessment of the quality of fit between the atomic model and the map.

9.2 Q-score mapped to coordinate model [i](#)



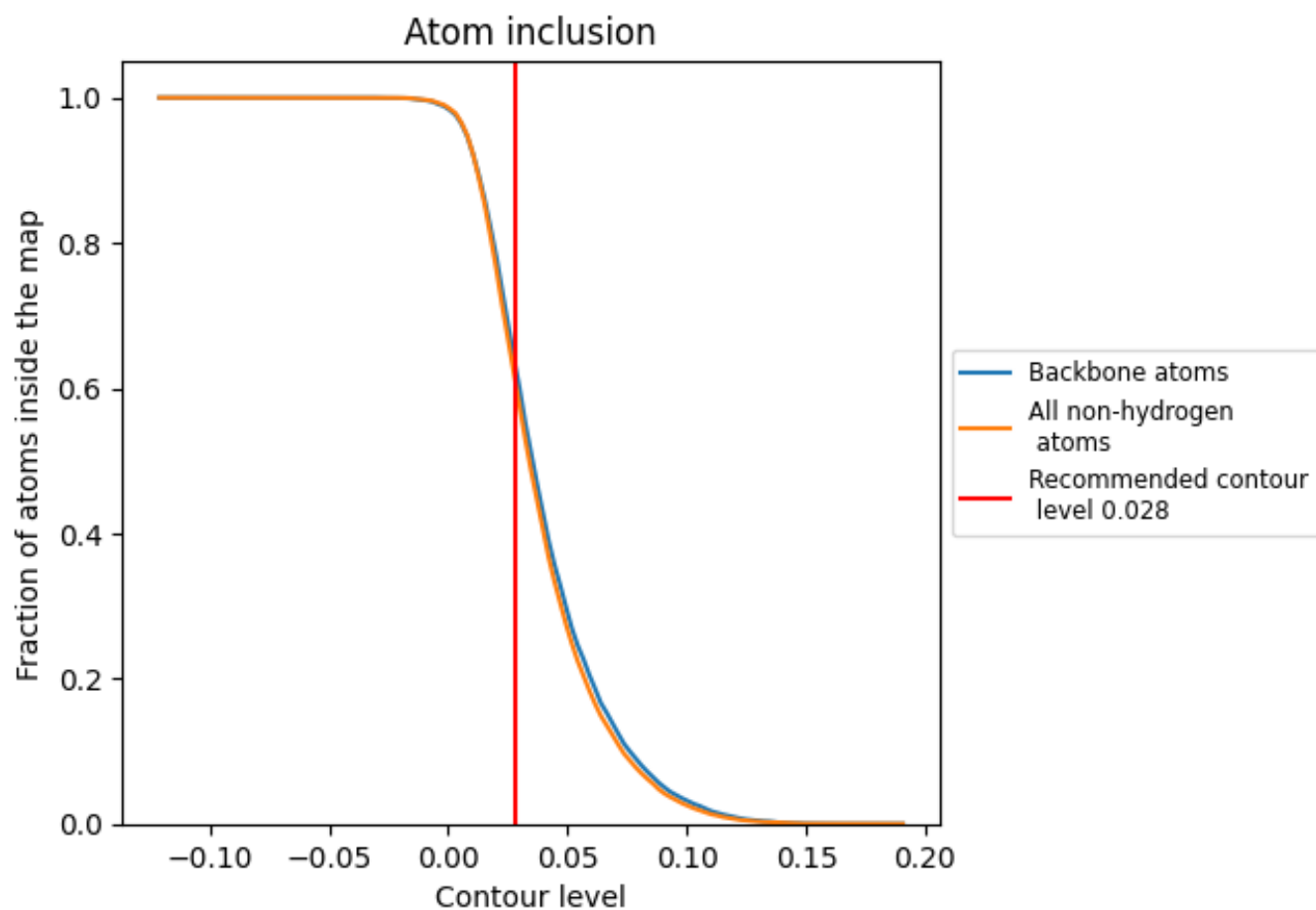
The images above show the model with each residue coloured according to its Q-score. This shows their resolvability in the map with higher Q-score values reflecting better resolvability. Please note: Q-score is calculating the resolvability of atoms, and thus high values are only expected at resolutions at which atoms can be resolved. Low Q-score values may therefore be expected for many entries.

9.3 Atom inclusion mapped to coordinate model [i](#)



The images above show the model with each residue coloured according to its atom inclusion. This shows to what extent they are inside the map at the recommended contour level (0.028).









9.4 Atom inclusion [i](#)



At the recommended contour level, 63% of all backbone atoms, 61% of all non-hydrogen atoms, are inside the map.

9.5 Map-model fit summary

The table lists the average atom inclusion at the recommended contour level (0.028) and Q-score for the entire model and for each chain.

Chain	Atom inclusion	Q-score
All	 0.6094	 0.4340
A	 0.5922	 0.4230
B	 0.5651	 0.4140
E	 0.6978	 0.4740

