



Full wwPDB X-ray Structure Validation Report ⓘ

May 15, 2020 – 06:14 am BST

PDB ID : 3TWS
Title : Crystal structure of ARC4 from human Tankyrase 2 in complex with peptide from human TERF1 (chimeric peptide)
Authors : Guettler, S.; Sicheri, F.
Deposited on : 2011-09-22
Resolution : 1.70 Å(reported)

This is a Full wwPDB X-ray Structure Validation Report for a publicly released PDB entry.

We welcome your comments at validation@mail.wwpdb.org

A user guide is available at

<https://www.wwpdb.org/validation/2017/XrayValidationReportHelp>

with specific help available everywhere you see the ⓘ symbol.

The following versions of software and data (see [references ⓘ](#)) were used in the production of this report:

MolProbity : 4.02b-467
Mogul : 1.8.5 (274361), CSD as541be (2020)
Xtriage (Phenix) : 1.13
EDS : 2.11
buster-report : 1.1.7 (2018)
Percentile statistics : 20191225.v01 (using entries in the PDB archive December 25th 2019)
Refmac : 5.8.0158
CCP4 : 7.0.044 (Gargrove)
Ideal geometry (proteins) : Engh & Huber (2001)
Ideal geometry (DNA, RNA) : Parkinson et al. (1996)
Validation Pipeline (wwPDB-VP) : 2.11

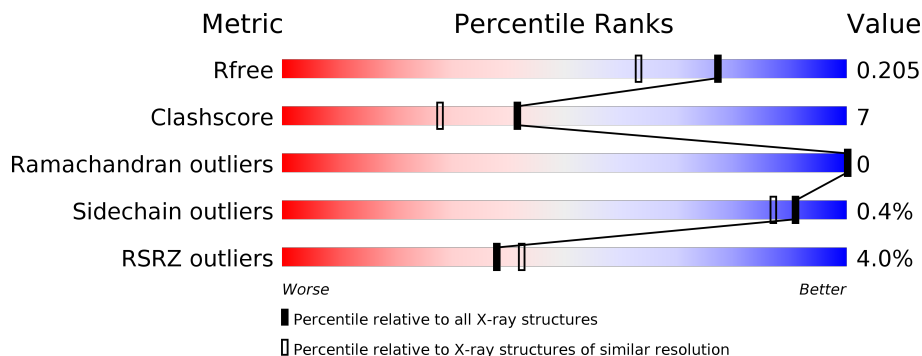
1 Overall quality at a glance

The following experimental techniques were used to determine the structure:

X-RAY DIFFRACTION

The reported resolution of this entry is 1.70 Å.

Percentile scores (ranging between 0-100) for global validation metrics of the entry are shown in the following graphic. The table shows the number of entries on which the scores are based.



Metric	Whole archive (#Entries)	Similar resolution (#Entries, resolution range(Å))
R_{free}	130704	4298 (1.70-1.70)
Clashscore	141614	4695 (1.70-1.70)
Ramachandran outliers	138981	4610 (1.70-1.70)
Sidechain outliers	138945	4610 (1.70-1.70)
RSRZ outliers	127900	4222 (1.70-1.70)

The table below summarises the geometric issues observed across the polymeric chains and their fit to the electron density. The red, orange, yellow and green segments on the lower bar indicate the fraction of residues that contain outliers for ≥ 3 , 2, 1 and 0 types of geometric quality criteria respectively. A grey segment represents the fraction of residues that are not modelled. The numeric value for each fraction is indicated below the corresponding segment, with a dot representing fractions $\leq 5\%$. The upper red bar (where present) indicates the fraction of residues that have poor fit to the electron density. The numeric value is given above the bar.

Mol	Chain	Length	Quality of chain
1	A	165	 5% 84% 11% 5%
1	B	165	 4% 82% 13% 5%
1	C	165	 3% 86% 8% 5%
1	D	165	 3% 82% 12% 6%
2	E	16	 13% 69% 19% 13%
2	F	16	 6% 50% 25% 25%

Continued on next page...

Continued from previous page...

Mol	Chain	Length	Quality of chain
2	G	16	
2	H	16	

The following table lists non-polymeric compounds, carbohydrate monomers and non-standard residues in protein, DNA, RNA chains that are outliers for geometric or electron-density-fit criteria:

Mol	Type	Chain	Res	Chirality	Geometry	Clashes	Electron density
3	PE8	A	1	-	-	X	-
4	EDO	G	17	-	-	X	-

2 Entry composition i

There are 7 unique types of molecules in this entry. The entry contains 5935 atoms, of which 0 are hydrogens and 0 are deuteriums.

In the tables below, the ZeroOcc column contains the number of atoms modelled with zero occupancy, the AltConf column contains the number of residues with at least one atom in alternate conformation and the Trace column contains the number of residues modelled with at most 2 atoms.

- Molecule 1 is a protein called Tankyrase-2.

Mol	Chain	Residues	Atoms					ZeroOcc	AltConf	Trace
			Total	C	N	O	S			
1	A	157	Total 1239	C 771	N 222	O 242	S 4	0	4	0
1	B	157	Total 1254	C 781	N 228	O 241	S 4	0	6	0
1	C	156	Total 1203	C 751	N 217	O 231	S 4	0	1	0
1	D	155	Total 1214	C 760	N 218	O 232	S 4	0	3	0

There are 12 discrepancies between the modelled and reference sequences:

Chain	Residue	Modelled	Actual	Comment	Reference
A	485	GLY	-	EXPRESSION TAG	UNP Q9H2K2
A	486	ALA	-	EXPRESSION TAG	UNP Q9H2K2
A	487	MET	-	EXPRESSION TAG	UNP Q9H2K2
B	485	GLY	-	EXPRESSION TAG	UNP Q9H2K2
B	486	ALA	-	EXPRESSION TAG	UNP Q9H2K2
B	487	MET	-	EXPRESSION TAG	UNP Q9H2K2
C	485	GLY	-	EXPRESSION TAG	UNP Q9H2K2
C	486	ALA	-	EXPRESSION TAG	UNP Q9H2K2
C	487	MET	-	EXPRESSION TAG	UNP Q9H2K2
D	485	GLY	-	EXPRESSION TAG	UNP Q9H2K2
D	486	ALA	-	EXPRESSION TAG	UNP Q9H2K2
D	487	MET	-	EXPRESSION TAG	UNP Q9H2K2

- Molecule 2 is a protein called human TERF1.

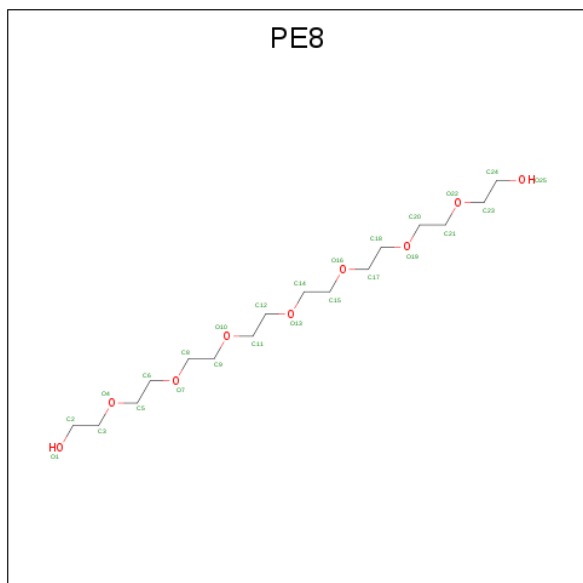
Mol	Chain	Residues	Atoms					ZeroOcc	AltConf	Trace
			Total	C	N	O	S			
2	E	14	Total 115	C 66	N 26	O 22	S 1	0	1	0
2	F	12	Total 91	C 51	N 21	O 18	S 1	0	0	0

Continued on next page...

Continued from previous page...

Mol	Chain	Residues	Atoms				ZeroOcc	AltConf	Trace	
			Total	C	N	O				S
2	G	11	Total	C	N	O	S	0	0	0
			82	46	19	16	1			
2	H	11	Total	C	N	O	S	0	0	0
			82	46	19	16	1			

- Molecule 3 is 3,6,9,12,15,18,21-HEPTAOXATRICOSANE-1,23-DIOL (three-letter code: PE8) (formula: $C_{16}H_{34}O_9$).



Mol	Chain	Residues	Atoms			ZeroOcc	AltConf
			Total	C	O		
3	A	1	Total	C	O	0	0
			25	16	9		

- Molecule 4 is 1,2-ETHANEDIOL (three-letter code: EDO) (formula: $C_2H_6O_2$).



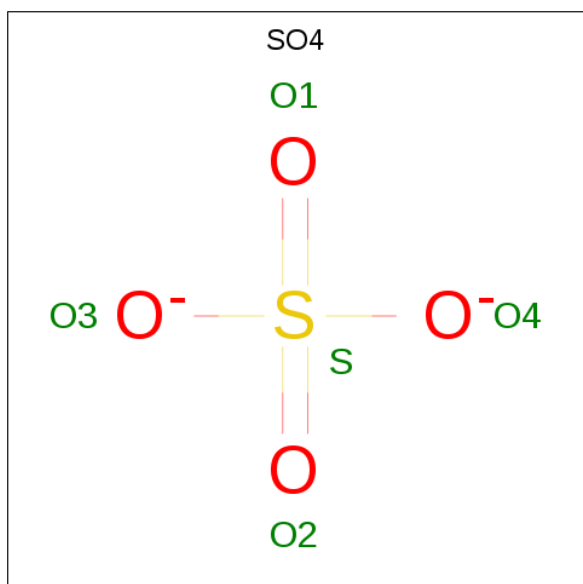
Mol	Chain	Residues	Atoms	ZeroOcc	AltConf
4	A	1	Total C O 4 2 2	0	0
4	A	1	Total C O 4 2 2	0	0
4	A	1	Total C O 4 2 2	0	0
4	A	1	Total C O 4 2 2	0	0
4	B	1	Total C O 4 2 2	0	0
4	B	1	Total C O 4 2 2	0	0
4	B	1	Total C O 4 2 2	0	0
4	B	1	Total C O 4 2 2	0	0
4	B	1	Total C O 4 2 2	0	0
4	B	1	Total C O 4 2 2	0	0
4	B	1	Total C O 4 2 2	0	0
4	C	1	Total C O 4 2 2	0	0
4	C	1	Total C O 4 2 2	0	0
4	C	1	Total C O 4 2 2	0	0

Continued on next page...

Continued from previous page...

Mol	Chain	Residues	Atoms	ZeroOcc	AltConf
4	C	1	Total C O 4 2 2	0	0
4	D	1	Total C O 4 2 2	0	0
4	D	1	Total C O 4 2 2	0	0
4	D	1	Total C O 4 2 2	0	0
4	D	1	Total C O 4 2 2	0	0
4	G	1	Total C O 4 2 2	0	0

- Molecule 5 is SULFATE ION (three-letter code: SO4) (formula: O₄S).



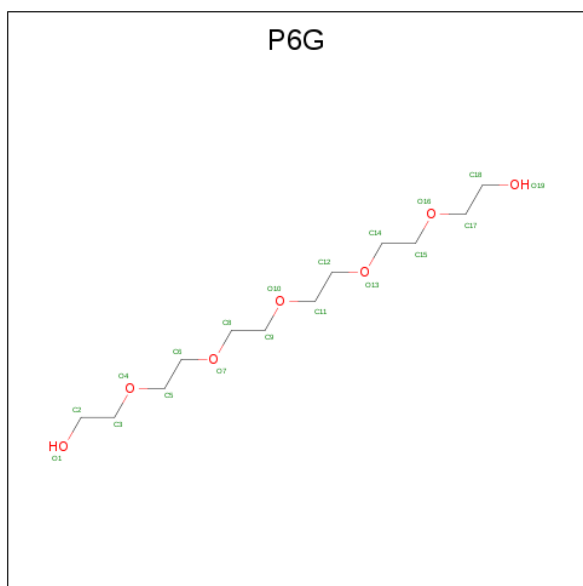
Mol	Chain	Residues	Atoms	ZeroOcc	AltConf
5	A	1	Total O S 5 4 1	0	0
5	B	1	Total O S 5 4 1	0	0
5	D	1	Total O S 5 4 1	0	0
5	D	1	Total O S 5 4 1	0	0
5	F	1	Total O S 5 4 1	0	0

Continued on next page...

Continued from previous page...

Mol	Chain	Residues	Atoms			ZeroOcc	AltConf
5	H	1	Total	O	S	0	0
			5	4	1		

- Molecule 6 is HEXAETHYLENE GLYCOL (three-letter code: P6G) (formula: C₁₂H₂₆O₇).



Mol	Chain	Residues	Atoms			ZeroOcc	AltConf
6	B	1	Total	C	O	0	0
			8	6	2		
6	C	1	Total	C	O	0	0
			14	9	5		
6	C	1	Total	C	O	0	0
			9	6	3		

- Molecule 7 is water.

Mol	Chain	Residues	Atoms		ZeroOcc	AltConf
7	A	99	Total	O	0	0
			99	99		
7	B	115	Total	O	0	0
			115	115		
7	C	112	Total	O	0	0
			112	112		
7	D	112	Total	O	0	0
			112	112		
7	E	13	Total	O	0	0
			13	13		

Continued on next page...

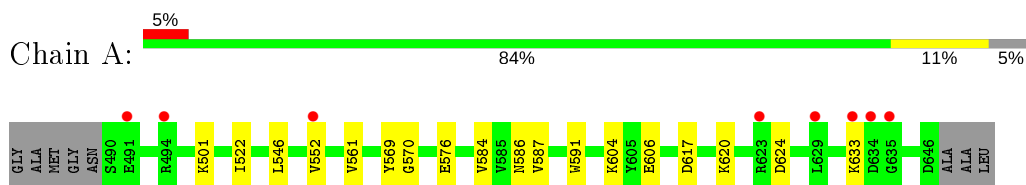
Continued from previous page...

Mol	Chain	Residues	Atoms	ZeroOcc	AltConf
7	F	11	Total O 11 11	0	0
7	G	14	Total O 14 14	0	0
7	H	13	Total O 13 13	0	0

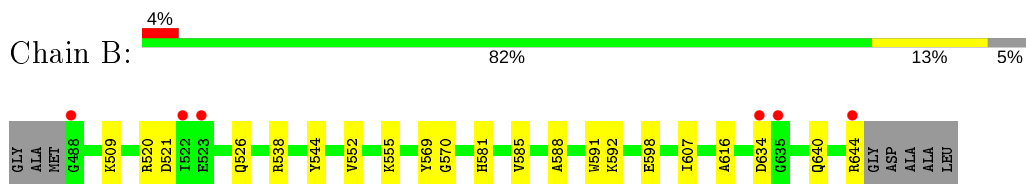
3 Residue-property plots [i](#)

These plots are drawn for all protein, RNA and DNA chains in the entry. The first graphic for a chain summarises the proportions of the various outlier classes displayed in the second graphic. The second graphic shows the sequence view annotated by issues in geometry and electron density. Residues are color-coded according to the number of geometric quality criteria for which they contain at least one outlier: green = 0, yellow = 1, orange = 2 and red = 3 or more. A red dot above a residue indicates a poor fit to the electron density ($RSRZ > 2$). Stretches of 2 or more consecutive residues without any outlier are shown as a green connector. Residues present in the sample, but not in the model, are shown in grey.

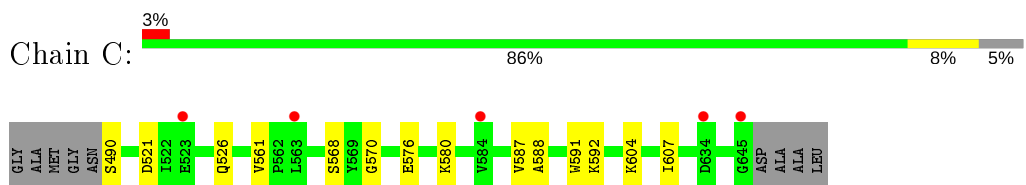
- Molecule 1: Tankyrase-2



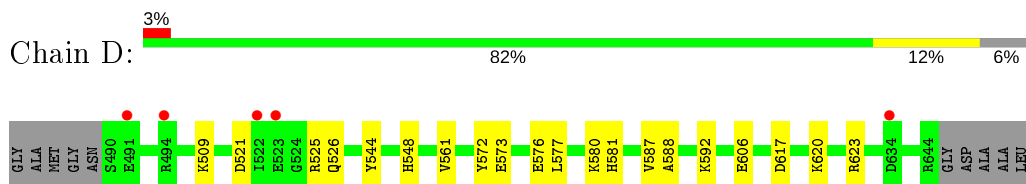
- Molecule 1: Tankyrase-2



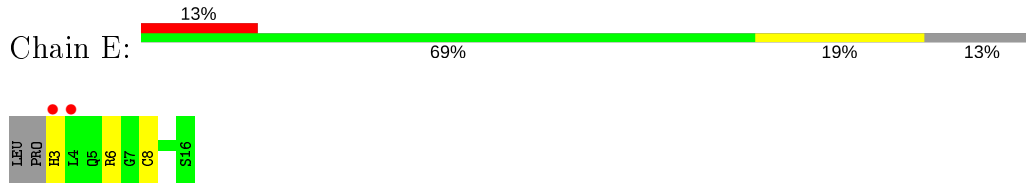
- Molecule 1: Tankyrase-2



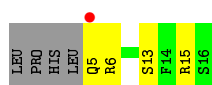
- Molecule 1: Tankyrase-2



- Molecule 2: human TERF1



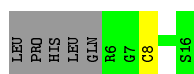
- Molecule 2: human TERF1



- Molecule 2: human TERF1



- Molecule 2: human TERF1



4 Data and refinement statistics

Property	Value	Source
Space group	P 21 21 21	Depositor
Cell constants a, b, c, α , β , γ	61.91Å 104.97Å 129.16Å 90.00° 90.00° 90.00°	Depositor
Resolution (Å)	33.29 – 1.70 33.29 – 1.70	Depositor EDS
% Data completeness (in resolution range)	99.5 (33.29-1.70) 99.5 (33.29-1.70)	Depositor EDS
R_{merge}	0.07	Depositor
R_{sym}	(Not available)	Depositor
$\langle I/\sigma(I) \rangle$ ¹	2.53 (at 1.70Å)	Xtrriage
Refinement program	PHENIX (phenix.refine: 1.7.1_743), REFMAC	Depositor
R, R_{free}	0.179 , 0.211 0.173 , 0.205	Depositor DCC
R_{free} test set	4671 reflections (5.03%)	wwPDB-VP
Wilson B-factor (Å ²)	23.8	Xtrriage
Anisotropy	0.079	Xtrriage
Bulk solvent k_{sol} (e/Å ³), B_{sol} (Å ²)	0.38 , 55.1	EDS
L-test for twinning ²	$\langle L \rangle = 0.50$, $\langle L^2 \rangle = 0.33$	Xtrriage
Estimated twinning fraction	No twinning to report.	Xtrriage
F_o, F_c correlation	0.96	EDS
Total number of atoms	5935	wwPDB-VP
Average B, all atoms (Å ²)	29.0	wwPDB-VP

Xtrriage's analysis on translational NCS is as follows: *The largest off-origin peak in the Patterson function is 3.75% of the height of the origin peak. No significant pseudotranslation is detected.*

¹Intensities estimated from amplitudes.

²Theoretical values of $\langle |L| \rangle$, $\langle L^2 \rangle$ for acentric reflections are 0.5, 0.333 respectively for untwinned datasets, and 0.375, 0.2 for perfectly twinned datasets.

5 Model quality [i](#)

5.1 Standard geometry [i](#)

Bond lengths and bond angles in the following residue types are not validated in this section: SET, PE8, EDO, P6G, SO4

The Z score for a bond length (or angle) is the number of standard deviations the observed value is removed from the expected value. A bond length (or angle) with $|Z| > 5$ is considered an outlier worth inspection. RMSZ is the root-mean-square of all Z scores of the bond lengths (or angles).

Mol	Chain	Bond lengths		Bond angles	
		RMSZ	# Z >5	RMSZ	# Z >5
1	A	0.32	0/1260	0.49	0/1706
1	B	0.33	0/1275	0.50	0/1726
1	C	0.31	0/1224	0.49	0/1657
1	D	0.32	0/1235	0.49	0/1673
2	E	0.35	0/109	0.54	0/143
2	F	0.32	0/84	0.54	0/109
2	G	0.31	0/75	0.47	0/97
2	H	0.37	0/75	0.41	0/97
All	All	0.32	0/5337	0.49	0/7208

There are no bond length outliers.

There are no bond angle outliers.

There are no chirality outliers.

There are no planarity outliers.

5.2 Too-close contacts [i](#)

In the following table, the Non-H and H(model) columns list the number of non-hydrogen atoms and hydrogen atoms in the chain respectively. The H(added) column lists the number of hydrogen atoms added and optimized by MolProbity. The Clashes column lists the number of clashes within the asymmetric unit, whereas Symm-Clashes lists symmetry related clashes.

Mol	Chain	Non-H	H(model)	H(added)	Clashes	Symm-Clashes
1	A	1239	0	1220	21	0
1	B	1254	0	1240	15	0
1	C	1203	0	1194	11	0
1	D	1214	0	1209	15	0
2	E	115	0	103	3	0

Continued on next page...

Continued from previous page...

Mol	Chain	Non-H	H(model)	H(added)	Clashes	Symm-Clashes
2	F	91	0	81	4	0
2	G	82	0	73	6	0
2	H	82	0	73	1	0
3	A	25	0	34	12	0
4	A	16	0	24	3	0
4	B	28	0	42	6	0
4	C	16	0	24	0	0
4	D	16	0	24	3	0
4	G	4	0	6	6	0
5	A	5	0	0	0	0
5	B	5	0	0	0	0
5	D	10	0	0	0	0
5	F	5	0	0	0	0
5	H	5	0	0	0	0
6	B	8	0	8	0	0
6	C	23	0	28	4	0
7	A	99	0	0	3	0
7	B	115	0	0	4	0
7	C	112	0	0	1	1
7	D	112	0	0	3	1
7	E	13	0	0	0	0
7	F	11	0	0	1	0
7	G	14	0	0	2	0
7	H	13	0	0	0	0
All	All	5935	0	5383	75	1

The all-atom clashscore is defined as the number of clashes found per 1000 atoms (including hydrogen atoms). The all-atom clashscore for this structure is 7.

All (75) close contacts within the same asymmetric unit are listed below, sorted by their clash magnitude.

Atom-1	Atom-2	Interatomic distance (Å)	Clash overlap (Å)
1:A:552[B]:VAL:HG23	7:A:177:HOH:O	1.65	0.95
2:F:15:ARG:NH1	7:F:247:HOH:O	2.02	0.92
1:A:604:LYS:NZ	3:A:1:PE8:H91	1.95	0.82
3:A:1:PE8:H122	3:A:1:PE8:O16	1.85	0.77
1:B:538:ARG:HH22	4:B:16:EDO:H22	1.55	0.71
1:B:552[B]:VAL:HG23	7:B:38:HOH:O	1.90	0.71
1:A:576[A]:GLU:OE2	7:A:395:HOH:O	2.11	0.68
2:G:9:ALA:H	4:G:17:EDO:C1	2.10	0.65
3:A:1:PE8:H22	7:D:43:HOH:O	1.98	0.64

Continued on next page...

Continued from previous page...

Atom-1	Atom-2	Interatomic distance (Å)	Clash overlap (Å)
1:B:634:ASP:OD1	7:B:363:HOH:O	2.15	0.63
1:A:604:LYS:HZ3	3:A:1:PE8:H91	1.64	0.62
1:A:522:ILE:HD11	7:C:319:HOH:O	1.98	0.62
4:G:17:EDO:O1	7:G:101:HOH:O	2.16	0.62
1:A:606:GLU:HG3	1:D:606:GLU:HG2	1.82	0.61
1:D:581:HIS:ND1	7:D:427:HOH:O	2.31	0.61
1:B:640:GLN:O	1:B:644:ARG:HG2	2.01	0.61
4:B:11:EDO:H21	2:F:13:SER:HB3	1.83	0.60
1:C:604:LYS:HD2	6:C:2:P6G:H51	1.84	0.59
1:D:509:LYS:HG2	1:D:544:TYR:CE1	2.38	0.58
1:A:604:LYS:HZ2	3:A:1:PE8:H91	1.67	0.58
1:B:581:HIS:HD2	7:B:420:HOH:O	1.86	0.58
1:A:604:LYS:NZ	3:A:1:PE8:H31	2.19	0.58
4:D:10:EDO:O1	7:D:320:HOH:O	2.17	0.57
1:C:521:ASP:O	1:C:526:GLN:HA	2.05	0.57
1:C:588:ALA:HB1	1:C:592:LYS:HA	1.85	0.56
1:A:501:LYS:HE2	4:A:7:EDO:H11	1.85	0.56
2:G:9:ALA:CB	4:G:17:EDO:H11	2.36	0.55
1:B:569:TYR:O	4:B:11:EDO:H22	2.06	0.55
1:C:568:SER:OG	4:G:17:EDO:H12	2.06	0.55
1:D:573:GLU:O	1:D:577[A]:LEU:HD13	2.07	0.55
1:D:623:ARG:HH11	4:D:12:EDO:H11	1.72	0.55
2:G:9:ALA:H	4:G:17:EDO:H11	1.71	0.54
1:A:570:GLY:HA3	3:A:1:PE8:H32	1.89	0.54
1:C:570:GLY:HA3	6:C:2:P6G:H31	1.89	0.54
1:C:561:VAL:HG21	1:C:587:VAL:HG11	1.90	0.54
1:A:617:ASP:HB3	1:A:620:LYS:HG3	1.89	0.53
1:B:588:ALA:HB1	1:B:592:LYS:HA	1.91	0.53
1:A:633:LYS:HG3	7:A:475:HOH:O	2.09	0.52
1:B:538:ARG:NH2	4:B:16:EDO:H22	2.24	0.52
1:A:624:ASP:CG	2:E:3:HIS:HE2	2.13	0.52
1:D:525:ARG:HD2	2:H:8:CYS:O	2.09	0.52
1:C:604:LYS:NZ	6:C:2:P6G:H122	2.25	0.51
1:D:623:ARG:HG2	4:D:12:EDO:H11	1.93	0.51
4:B:16:EDO:H21	7:B:113:HOH:O	2.11	0.51
1:D:561:VAL:HG21	1:D:587:VAL:HG11	1.94	0.50
1:A:569:TYR:O	3:A:1:PE8:H21	2.12	0.50
1:B:591:TRP:NE1	2:E:8:CYS:HB3	2.27	0.50
1:C:591:TRP:CH2	2:G:6:ARG:HA	2.47	0.49
1:D:521:ASP:O	1:D:526:GLN:HA	2.13	0.49
4:B:11:EDO:H11	2:F:13:SER:O	2.13	0.49

Continued on next page...

Continued from previous page...

Atom-1	Atom-2	Interatomic distance (Å)	Clash overlap (Å)
1:A:584:VAL:HG13	4:A:19:EDO:H11	1.95	0.49
3:A:1:PE8:H61	1:D:572:TYR:CE1	2.48	0.48
1:D:588:ALA:HB1	1:D:592:LYS:HA	1.96	0.47
1:A:604:LYS:HZ1	3:A:1:PE8:H31	1.80	0.47
3:A:1:PE8:H82	3:A:1:PE8:H112	1.42	0.47
2:G:13:SER:OG	7:G:263:HOH:O	2.20	0.47
1:B:598:GLU:OE1	2:F:6:ARG:NH1	2.31	0.46
1:B:570:GLY:HA2	1:B:607:ILE:HG13	1.96	0.46
1:C:570:GLY:HA2	1:C:607:ILE:HD12	1.98	0.46
1:B:520:ARG:NH1	1:B:555:LYS:O	2.44	0.46
1:D:617:ASP:HB3	1:D:620:LYS:HG3	1.98	0.46
1:C:576:GLU:HG2	1:C:580:LYS:HE3	1.97	0.45
1:D:544:TYR:CE1	1:D:548:HIS:CE1	3.05	0.44
2:G:9:ALA:HB3	4:G:17:EDO:H11	2.00	0.43
1:A:561:VAL:HG21	1:A:587:VAL:HG11	1.99	0.43
1:A:546:LEU:CD2	1:A:552[B]:VAL:HG22	2.48	0.43
1:A:591:TRP:CH2	2:E:6:ARG:HA	2.53	0.43
1:B:521:ASP:O	1:B:526:GLN:HA	2.18	0.43
1:D:576:GLU:HG3	1:D:580:LYS:HE2	2.00	0.43
1:C:570:GLY:HA3	6:C:2:P6G:C3	2.49	0.42
1:B:509:LYS:HG2	1:B:544:TYR:CE1	2.55	0.42
1:A:586:ASN:HD22	4:A:20:EDO:H11	1.85	0.41
1:A:604:LYS:HZ2	3:A:1:PE8:H31	1.86	0.41
1:D:617:ASP:CG	1:D:620:LYS:HG3	2.41	0.41
1:B:585[A]:VAL:CG1	1:B:616:ALA:HB2	2.51	0.41

All (1) symmetry-related close contacts are listed below. The label for Atom-2 includes the symmetry operator and encoded unit-cell translations to be applied.

Atom-1	Atom-2	Interatomic distance (Å)	Clash overlap (Å)
7:C:256:HOH:O	7:D:307:HOH:O[4_545]	2.13	0.07

5.3 Torsion angles [i](#)

5.3.1 Protein backbone [i](#)

In the following table, the Percentiles column shows the percent Ramachandran outliers of the chain as a percentile score with respect to all X-ray entries followed by that with respect to entries of similar resolution.

The Analysed column shows the number of residues for which the backbone conformation was analysed, and the total number of residues.

Mol	Chain	Analysed	Favoured	Allowed	Outliers	Percentiles	
1	A	160/165 (97%)	160 (100%)	0	0	100	100
1	B	161/165 (98%)	160 (99%)	1 (1%)	0	100	100
1	C	155/165 (94%)	154 (99%)	1 (1%)	0	100	100
1	D	156/165 (94%)	156 (100%)	0	0	100	100
2	E	13/16 (81%)	13 (100%)	0	0	100	100
2	F	10/16 (62%)	10 (100%)	0	0	100	100
2	G	9/16 (56%)	9 (100%)	0	0	100	100
2	H	9/16 (56%)	9 (100%)	0	0	100	100
All	All	673/724 (93%)	671 (100%)	2 (0%)	0	100	100

There are no Ramachandran outliers to report.

5.3.2 Protein sidechains [i](#)

In the following table, the Percentiles column shows the percent sidechain outliers of the chain as a percentile score with respect to all X-ray entries followed by that with respect to entries of similar resolution.

The Analysed column shows the number of residues for which the sidechain conformation was analysed, and the total number of residues.

Mol	Chain	Analysed	Rotameric	Outliers	Percentiles	
1	A	133/131 (102%)	133 (100%)	0	100	100
1	B	134/131 (102%)	134 (100%)	0	100	100
1	C	128/131 (98%)	127 (99%)	1 (1%)	81	74
1	D	130/131 (99%)	130 (100%)	0	100	100
2	E	11/12 (92%)	11 (100%)	0	100	100
2	F	8/12 (67%)	7 (88%)	1 (12%)	4	1
2	G	7/12 (58%)	7 (100%)	0	100	100
2	H	7/12 (58%)	7 (100%)	0	100	100
All	All	558/572 (98%)	556 (100%)	2 (0%)	91	87

All (2) residues with a non-rotameric sidechain are listed below:

Mol	Chain	Res	Type
1	C	490	SER
2	F	5	GLN

Some sidechains can be flipped to improve hydrogen bonding and reduce clashes. There are no such sidechains identified.

5.3.3 RNA [i](#)

There are no RNA molecules in this entry.

5.4 Non-standard residues in protein, DNA, RNA chains [i](#)

4 non-standard protein/DNA/RNA residues are modelled in this entry.

In the following table, the Counts columns list the number of bonds (or angles) for which Mogul statistics could be retrieved, the number of bonds (or angles) that are observed in the model and the number of bonds (or angles) that are defined in the Chemical Component Dictionary. The Link column lists molecule types, if any, to which the group is linked. The Z score for a bond length (or angle) is the number of standard deviations the observed value is removed from the expected value. A bond length (or angle) with $|Z| > 2$ is considered an outlier worth inspection. RMSZ is the root-mean-square of all Z scores of the bond lengths (or angles).

Mol	Type	Chain	Res	Link	Bond lengths			Bond angles		
					Counts	RMSZ	# Z > 2	Counts	RMSZ	# Z > 2
2	SET	H	16	2	6,6,6	0.29	0	6,7,7	0.30	0
2	SET	G	16	2	6,6,6	0.26	0	6,7,7	0.71	0
2	SET	F	16	2	6,6,6	0.43	0	6,7,7	0.42	0
2	SET	E	16	2	6,6,6	0.36	0	6,7,7	0.31	0

In the following table, the Chirals column lists the number of chiral outliers, the number of chiral centers analysed, the number of these observed in the model and the number defined in the Chemical Component Dictionary. Similar counts are reported in the Torsion and Rings columns. '-' means no outliers of that kind were identified.

Mol	Type	Chain	Res	Link	Chirals	Torsions	Rings
2	SET	H	16	2	-	1/6/6/6	-
2	SET	G	16	2	-	2/6/6/6	-
2	SET	F	16	2	-	2/6/6/6	-
2	SET	E	16	2	-	2/6/6/6	-

There are no bond length outliers.

There are no bond angle outliers.

There are no chirality outliers.

All (7) torsion outliers are listed below:

Mol	Chain	Res	Type	Atoms
2	H	16	SET	NT-C-CA-N
2	G	16	SET	NT-C-CA-N
2	F	16	SET	NT-C-CA-N
2	E	16	SET	NT-C-CA-N
2	G	16	SET	O-C-CA-N
2	F	16	SET	O-C-CA-N
2	E	16	SET	O-C-CA-N

There are no ring outliers.

No monomer is involved in short contacts.

5.5 Carbohydrates [i](#)

There are no carbohydrates in this entry.

5.6 Ligand geometry [i](#)

30 ligands are modelled in this entry.

In the following table, the Counts columns list the number of bonds (or angles) for which Mogul statistics could be retrieved, the number of bonds (or angles) that are observed in the model and the number of bonds (or angles) that are defined in the Chemical Component Dictionary. The Link column lists molecule types, if any, to which the group is linked. The Z score for a bond length (or angle) is the number of standard deviations the observed value is removed from the expected value. A bond length (or angle) with $|Z| > 2$ is considered an outlier worth inspection. RMSZ is the root-mean-square of all Z scores of the bond lengths (or angles).

Mol	Type	Chain	Res	Link	Bond lengths			Bond angles		
					Counts	RMSZ	$\# Z > 2$	Counts	RMSZ	$\# Z > 2$
4	EDO	C	17	-	3,3,3	0.52	0	2,2,2	0.32	0
4	EDO	B	15	-	3,3,3	0.50	0	2,2,2	0.43	0
3	PE8	A	1	-	24,24,24	0.43	0	23,23,23	0.48	0
5	SO4	F	17	-	4,4,4	0.17	0	6,6,6	0.21	0
4	EDO	B	5	-	3,3,3	0.48	0	2,2,2	0.38	0
4	EDO	B	1	-	3,3,3	0.46	0	2,2,2	0.29	0
4	EDO	G	17	-	3,3,3	0.43	0	2,2,2	0.37	0
5	SO4	A	2	-	4,4,4	0.16	0	6,6,6	0.17	0
4	EDO	D	12	-	3,3,3	0.46	0	2,2,2	0.35	0
4	EDO	B	656	-	3,3,3	0.52	0	2,2,2	0.34	0

Mol	Type	Chain	Res	Link	Bond lengths			Bond angles		
					Counts	RMSZ	# Z > 2	Counts	RMSZ	# Z > 2
4	EDO	B	16	-	3,3,3	0.45	0	2,2,2	0.29	0
4	EDO	A	7	-	3,3,3	0.48	0	2,2,2	0.32	0
4	EDO	A	20	-	3,3,3	0.48	0	2,2,2	0.34	0
4	EDO	A	14	-	3,3,3	0.52	0	2,2,2	0.24	0
4	EDO	D	10	-	3,3,3	0.50	0	2,2,2	0.37	0
6	P6G	B	4	-	7,7,18	0.52	0	6,6,17	0.30	0
4	EDO	D	6	-	3,3,3	0.48	0	2,2,2	0.34	0
4	EDO	B	11	-	3,3,3	0.44	0	2,2,2	0.39	0
6	P6G	C	2	-	13,13,18	0.42	0	12,12,17	0.34	0
5	SO4	B	6	-	4,4,4	0.15	0	6,6,6	0.40	0
4	EDO	A	19	-	3,3,3	0.50	0	2,2,2	0.17	0
4	EDO	C	657	-	3,3,3	0.53	0	2,2,2	0.35	0
4	EDO	D	8	-	3,3,3	0.53	0	2,2,2	0.34	0
5	SO4	D	3	-	4,4,4	0.15	0	6,6,6	0.22	0
6	P6G	C	3	-	8,8,18	0.47	0	7,7,17	0.26	0
5	SO4	H	17	-	4,4,4	0.15	0	6,6,6	0.40	0
4	EDO	C	656	-	3,3,3	0.52	0	2,2,2	0.27	0
4	EDO	B	13	-	3,3,3	0.51	0	2,2,2	0.31	0
5	SO4	D	1	-	4,4,4	0.19	0	6,6,6	0.44	0
4	EDO	C	18	-	3,3,3	0.49	0	2,2,2	0.32	0

In the following table, the Chirals column lists the number of chiral outliers, the number of chiral centers analysed, the number of these observed in the model and the number defined in the Chemical Component Dictionary. Similar counts are reported in the Torsion and Rings columns. '-' means no outliers of that kind were identified.

Mol	Type	Chain	Res	Link	Chirals	Torsions	Rings
4	EDO	C	17	-	-	0/1/1/1	-
4	EDO	B	15	-	-	0/1/1/1	-
3	PE8	A	1	-	-	10/22/22/22	-
4	EDO	B	5	-	-	0/1/1/1	-
4	EDO	B	656	-	-	0/1/1/1	-
4	EDO	G	17	-	-	0/1/1/1	-
4	EDO	D	12	-	-	0/1/1/1	-
4	EDO	B	1	-	-	0/1/1/1	-
4	EDO	B	16	-	-	0/1/1/1	-
4	EDO	A	7	-	-	0/1/1/1	-
4	EDO	A	20	-	-	0/1/1/1	-
4	EDO	A	14	-	-	0/1/1/1	-
4	EDO	D	10	-	-	0/1/1/1	-
6	P6G	B	4	-	-	1/5/5/16	-
4	EDO	D	6	-	-	0/1/1/1	-

Continued on next page...

Continued from previous page...

Mol	Type	Chain	Res	Link	Chirals	Torsions	Rings
4	EDO	B	11	-	-	0/1/1/1	-
6	P6G	C	2	-	-	4/11/11/16	-
4	EDO	A	19	-	-	0/1/1/1	-
4	EDO	C	657	-	-	0/1/1/1	-
4	EDO	D	8	-	-	0/1/1/1	-
6	P6G	C	3	-	-	2/6/6/16	-
4	EDO	C	656	-	-	0/1/1/1	-
4	EDO	B	13	-	-	0/1/1/1	-
4	EDO	C	18	-	-	0/1/1/1	-

There are no bond length outliers.

There are no bond angle outliers.

There are no chirality outliers.

All (17) torsion outliers are listed below:

Mol	Chain	Res	Type	Atoms
3	A	1	PE8	C8-C9-O10-C11
6	B	4	P6G	O4-C5-C6-O7
3	A	1	PE8	O4-C5-C6-O7
3	A	1	PE8	C15-C14-O13-C12
6	C	2	P6G	O10-C11-C12-O13
6	C	2	P6G	O7-C8-C9-O10
3	A	1	PE8	O7-C8-C9-O10
6	C	2	P6G	C12-C11-O10-C9
3	A	1	PE8	C11-C12-O13-C14
3	A	1	PE8	C12-C11-O10-C9
6	C	2	P6G	C8-C9-O10-C11
3	A	1	PE8	C17-C18-O19-C20
3	A	1	PE8	C20-C21-O22-C23
6	C	3	P6G	O4-C5-C6-O7
3	A	1	PE8	C9-C8-O7-C6
6	C	3	P6G	C6-C5-O4-C3
3	A	1	PE8	C6-C5-O4-C3

There are no ring outliers.

10 monomers are involved in 34 short contacts:

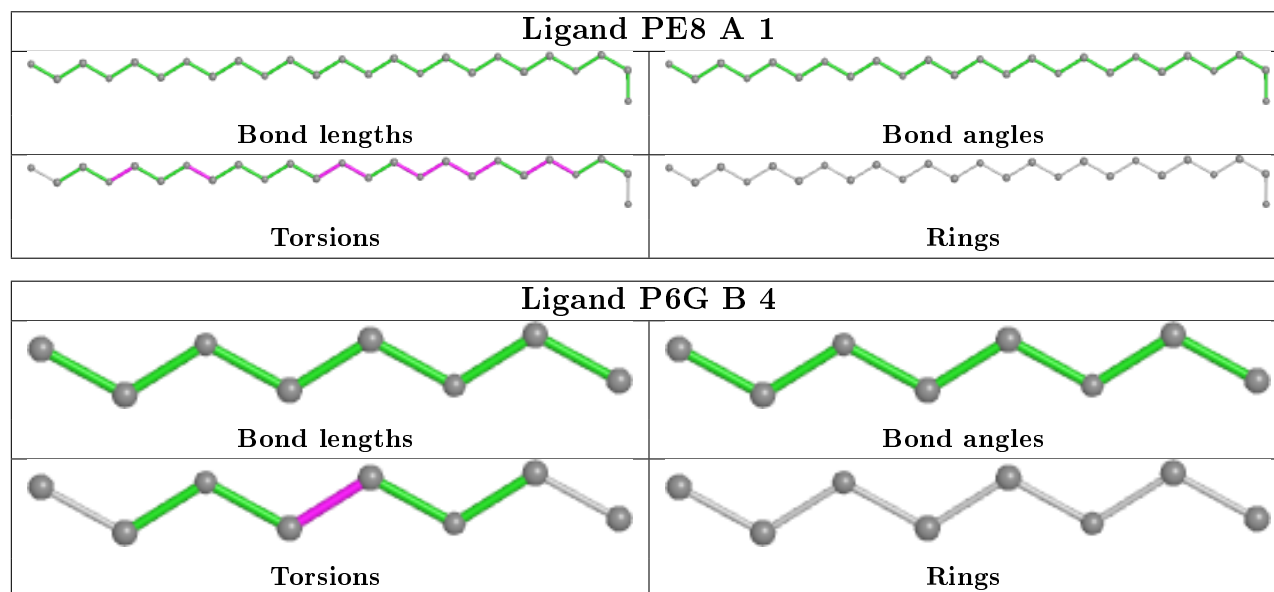
Mol	Chain	Res	Type	Clashes	Symm-Clashes
3	A	1	PE8	12	0
4	G	17	EDO	6	0

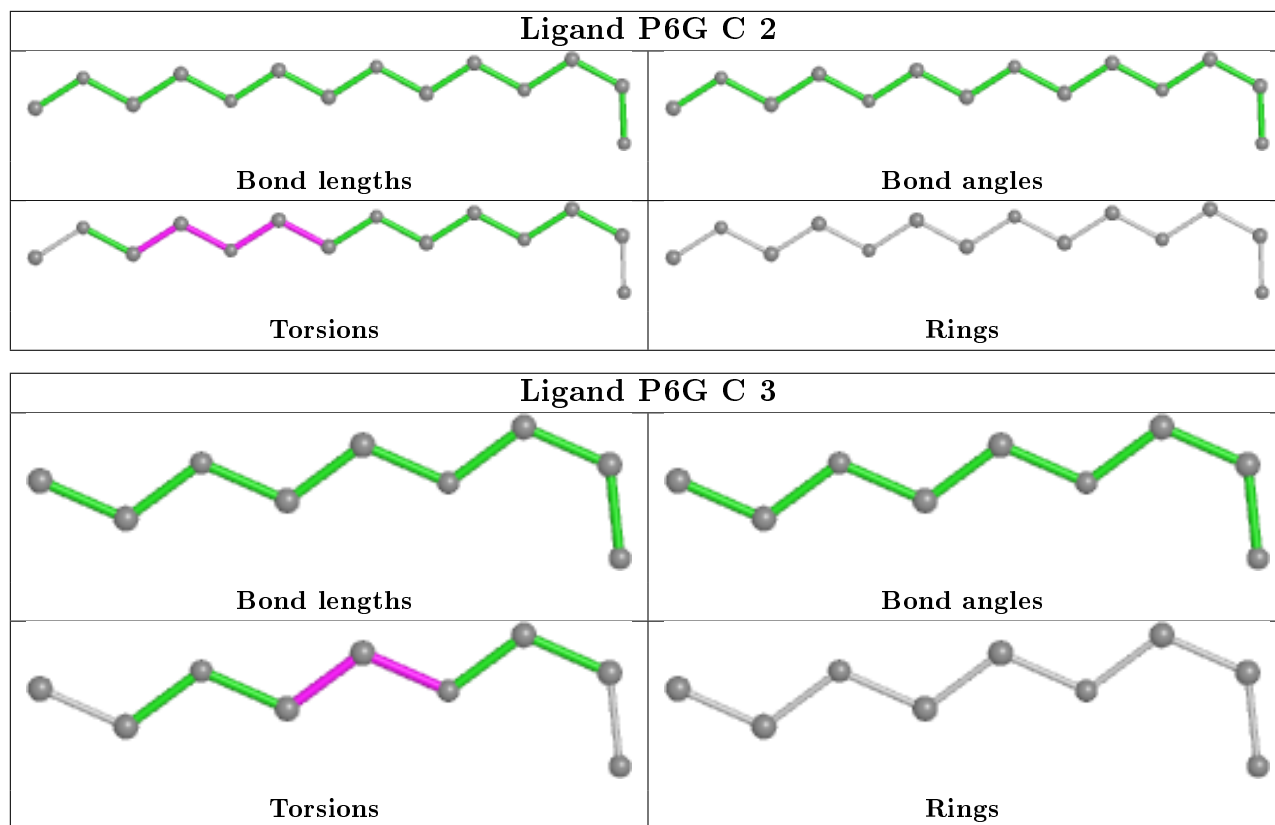
Continued on next page...

Continued from previous page...

Mol	Chain	Res	Type	Clashes	Symm-Clashes
4	D	12	EDO	2	0
4	B	16	EDO	3	0
4	A	7	EDO	1	0
4	A	20	EDO	1	0
4	D	10	EDO	1	0
4	B	11	EDO	3	0
6	C	2	P6G	4	0
4	A	19	EDO	1	0

The following is a two-dimensional graphical depiction of Mogul quality analysis of bond lengths, bond angles, torsion angles, and ring geometry for all instances of the Ligand of Interest. In addition, ligands with molecular weight > 250 and outliers as shown on the validation Tables will also be included. For torsion angles, if less than 5% of the Mogul distribution of torsion angles is within 10 degrees of the torsion angle in question, then that torsion angle is considered an outlier. Any bond that is central to one or more torsion angles identified as an outlier by Mogul will be highlighted in the graph. For rings, the root-mean-square deviation (RMSD) between the ring in question and similar rings identified by Mogul is calculated over all ring torsion angles. If the average RMSD is greater than 60 degrees and the minimal RMSD between the ring in question and any Mogul-identified rings is also greater than 60 degrees, then that ring is considered an outlier. The outliers are highlighted in purple. The color gray indicates Mogul did not find sufficient equivalents in the CSD to analyse the geometry.





5.7 Other polymers [i](#)

There are no such residues in this entry.

5.8 Polymer linkage issues [i](#)

There are no chain breaks in this entry.

6 Fit of model and data

6.1 Protein, DNA and RNA chains

In the following table, the column labelled ‘#RSRZ> 2’ contains the number (and percentage) of RSRZ outliers, followed by percent RSRZ outliers for the chain as percentile scores relative to all X-ray entries and entries of similar resolution. The OWAB column contains the minimum, median, 95th percentile and maximum values of the occupancy-weighted average B-factor per residue. The column labelled ‘Q< 0.9’ lists the number of (and percentage) of residues with an average occupancy less than 0.9.

Mol	Chain	Analysed	<RSRZ>	#RSRZ>2	OWAB(Å ²)	Q<0.9
1	A	157/165 (95%)	0.28	8 (5%) 28 31	14, 25, 48, 68	4 (2%)
1	B	157/165 (95%)	-0.08	6 (3%) 40 45	14, 23, 41, 65	5 (3%)
1	C	156/165 (94%)	0.17	5 (3%) 47 52	16, 25, 48, 62	4 (2%)
1	D	155/165 (93%)	0.06	5 (3%) 47 52	16, 26, 46, 64	1 (0%)
2	E	13/16 (81%)	0.68	2 (15%) 2 2	18, 23, 54, 60	0
2	F	11/16 (68%)	0.19	1 (9%) 9 10	18, 23, 38, 62	1 (9%)
2	G	10/16 (62%)	-0.26	0 100 100	22, 26, 42, 45	0
2	H	10/16 (62%)	-0.04	0 100 100	21, 24, 43, 46	0
All	All	669/724 (92%)	0.11	27 (4%) 38 42	14, 25, 47, 68	15 (2%)

All (27) RSRZ outliers are listed below:

Mol	Chain	Res	Type	RSRZ
1	A	634	ASP	7.2
1	D	634	ASP	6.2
1	B	488	GLY	5.5
1	B	522	ILE	5.0
1	B	635	GLY	4.5
2	F	5	GLN	4.0
1	C	523	GLU	3.6
1	D	523	GLU	3.4
1	B	634	ASP	3.3
1	D	522	ILE	3.2
1	C	563	LEU	2.8
1	A	623	ARG	2.8
1	A	633	LYS	2.8
1	A	552[A]	VAL	2.8
1	A	491	GLU	2.7
1	A	494	ARG	2.6

Continued on next page...

Continued from previous page...

Mol	Chain	Res	Type	RSRZ
1	B	644	ARG	2.5
2	E	3	HIS	2.5
1	A	629	LEU	2.5
1	B	523	GLU	2.4
1	D	491	GLU	2.2
1	A	635	GLY	2.2
1	C	584	VAL	2.2
1	C	645	GLY	2.1
1	D	494	ARG	2.0
2	E	4	LEU	2.0
1	C	634	ASP	2.0

6.2 Non-standard residues in protein, DNA, RNA chains [i](#)

In the following table, the Atoms column lists the number of modelled atoms in the group and the number defined in the chemical component dictionary. The B-factors column lists the minimum, median, 95th percentile and maximum values of B factors of atoms in the group. The column labelled 'Q< 0.9' lists the number of atoms with occupancy less than 0.9.

Mol	Type	Chain	Res	Atoms	RSCC	RSR	B-factors(Å ²)	Q<0.9
2	SET	E	16	7/7	0.94	0.09	25,26,32,38	0
2	SET	F	16	7/7	0.96	0.07	21,31,32,36	0
2	SET	G	16	7/7	0.96	0.07	21,25,31,36	0
2	SET	H	16	7/7	0.98	0.10	21,26,34,41	0

6.3 Carbohydrates [i](#)

There are no carbohydrates in this entry.

6.4 Ligands [i](#)

In the following table, the Atoms column lists the number of modelled atoms in the group and the number defined in the chemical component dictionary. The B-factors column lists the minimum, median, 95th percentile and maximum values of B factors of atoms in the group. The column labelled 'Q< 0.9' lists the number of atoms with occupancy less than 0.9.

Mol	Type	Chain	Res	Atoms	RSCC	RSR	B-factors(Å ²)	Q<0.9
4	EDO	B	656	4/4	0.69	0.24	54,57,59,63	0
4	EDO	D	8	4/4	0.72	0.31	45,47,47,48	0
4	EDO	C	17	4/4	0.75	0.25	49,52,56,64	0

Continued on next page...

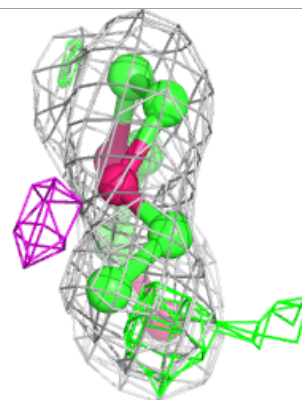
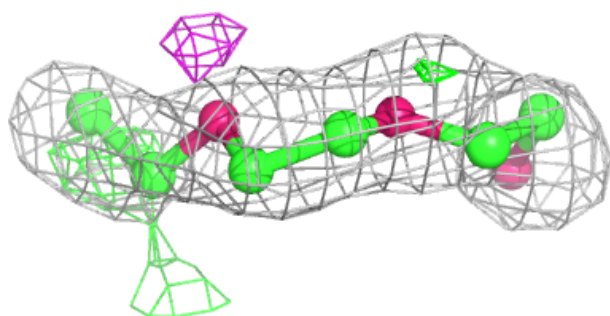
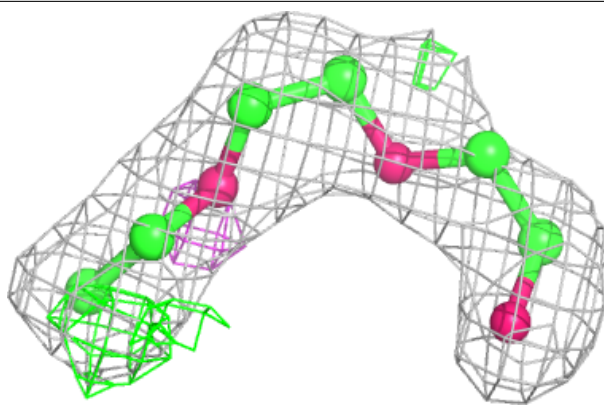
Continued from previous page...

Mol	Type	Chain	Res	Atoms	RSCC	RSR	B-factors(\AA^2)	Q<0.9
6	P6G	C	3	9/19	0.75	0.22	40,47,62,63	0
4	EDO	A	19	4/4	0.84	0.19	27,34,35,42	0
4	EDO	C	18	4/4	0.85	0.13	59,59,61,62	0
4	EDO	C	657	4/4	0.86	0.18	36,41,44,44	0
4	EDO	A	20	4/4	0.86	0.15	57,61,63,64	0
4	EDO	B	5	4/4	0.89	0.15	45,56,57,58	0
4	EDO	C	656	4/4	0.89	0.14	41,50,56,63	0
3	PE8	A	1	25/25	0.89	0.13	25,38,48,53	0
4	EDO	B	13	4/4	0.90	0.23	41,50,53,59	0
6	P6G	B	4	8/19	0.90	0.16	46,49,62,64	0
4	EDO	A	14	4/4	0.91	0.12	47,51,57,61	0
4	EDO	A	7	4/4	0.91	0.09	41,48,49,50	0
5	SO4	A	2	5/5	0.91	0.13	49,52,60,61	0
4	EDO	B	15	4/4	0.92	0.30	41,41,42,42	0
4	EDO	G	17	4/4	0.92	0.27	45,46,54,60	0
6	P6G	C	2	14/19	0.93	0.18	32,44,60,67	0
4	EDO	B	11	4/4	0.93	0.12	33,34,38,55	0
5	SO4	H	17	5/5	0.94	0.10	27,29,41,42	5
4	EDO	B	1	4/4	0.94	0.24	30,44,45,54	0
4	EDO	D	12	4/4	0.95	0.14	55,57,59,63	0
4	EDO	D	6	4/4	0.96	0.14	56,57,58,59	0
4	EDO	D	10	4/4	0.96	0.38	34,35,45,47	0
4	EDO	B	16	4/4	0.96	0.36	34,49,54,63	0
5	SO4	B	6	5/5	0.96	0.12	15,25,26,26	5
5	SO4	D	3	5/5	0.97	0.10	31,37,40,40	5
5	SO4	D	1	5/5	0.98	0.13	15,21,22,25	5
5	SO4	F	17	5/5	0.98	0.09	26,29,37,44	0

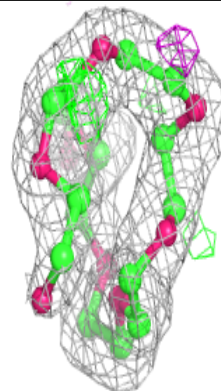
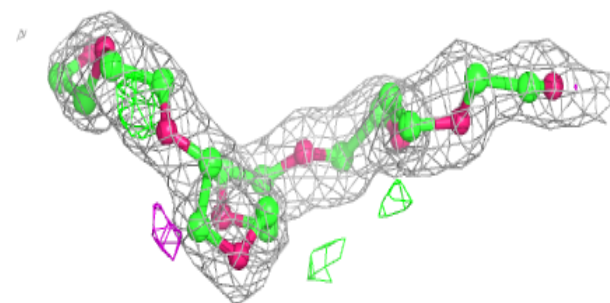
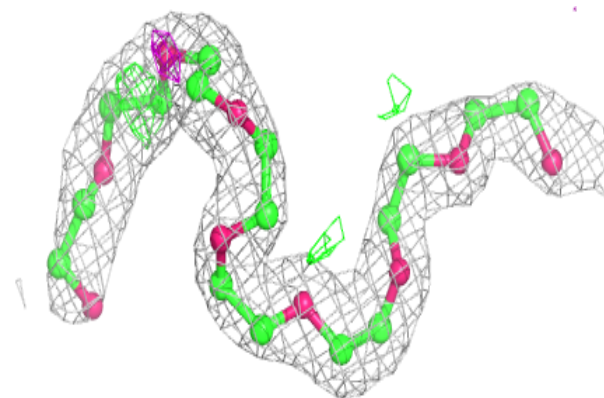
The following is a graphical depiction of the model fit to experimental electron density of all instances of the Ligand of Interest. In addition, ligands with molecular weight > 250 and outliers as shown on the geometry validation Tables will also be included. Each fit is shown from different orientation to approximate a three-dimensional view.

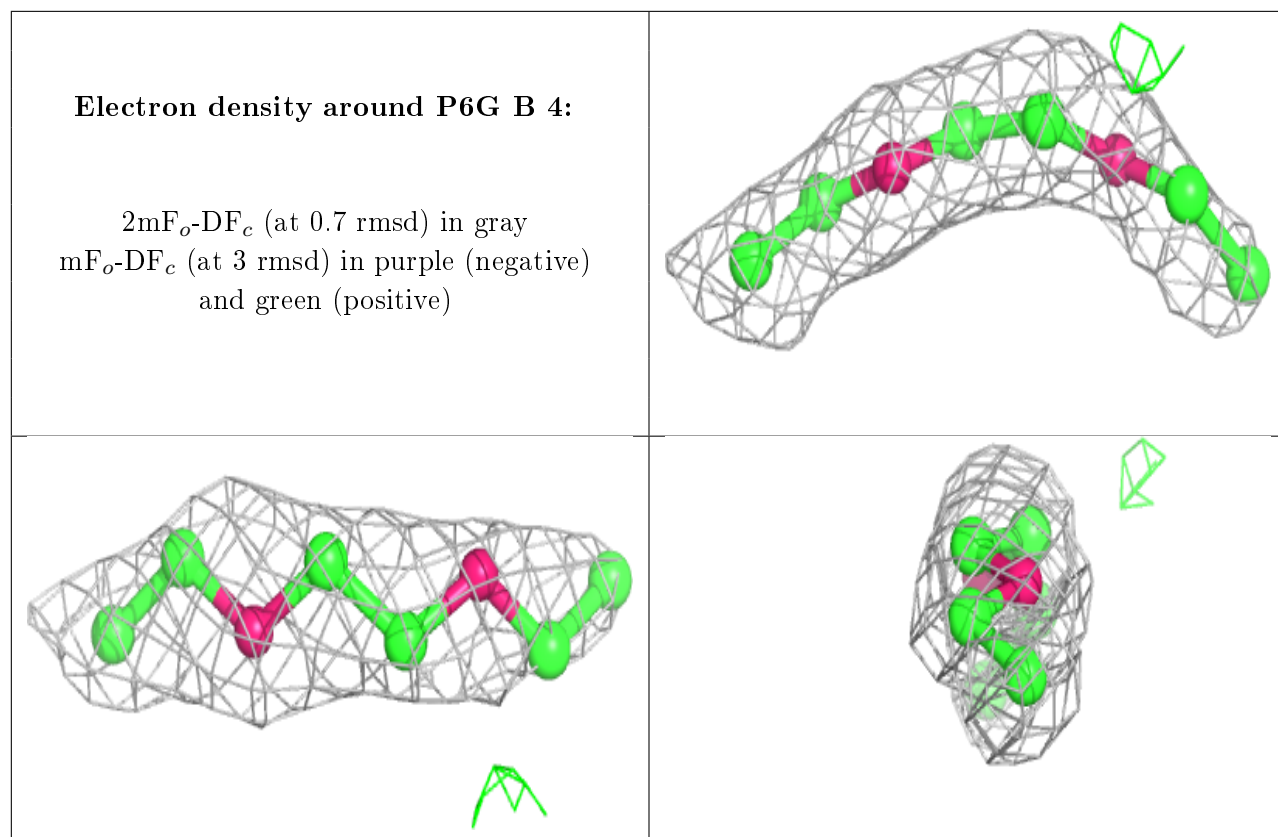
Electron density around P6G C 3:

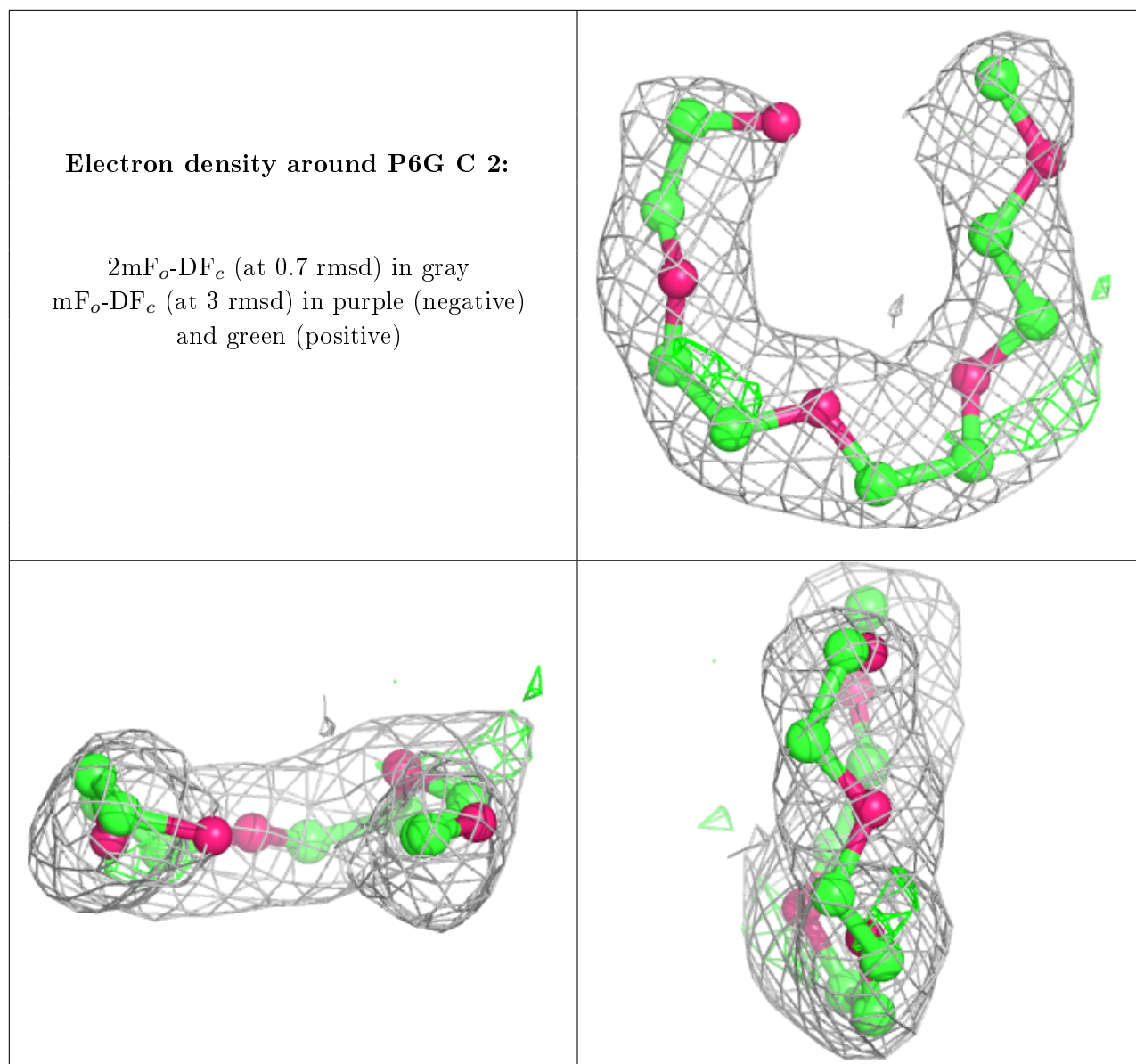
$2mF_o-DF_c$ (at 0.7 rmsd) in gray
 mF_o-DF_c (at 3 rmsd) in purple (negative)
and green (positive)

**Electron density around PE8 A 1:**

$2mF_o-DF_c$ (at 0.7 rmsd) in gray
 mF_o-DF_c (at 3 rmsd) in purple (negative)
and green (positive)







6.5 Other polymers [i](#)

There are no such residues in this entry.