



# Full wwPDB X-ray Structure Validation Report ⓘ

Oct 14, 2023 – 04:53 PM EDT

PDB ID : 7TWK  
Title : Structure of a borosin methyltransferase from *Mycena rosella* with native peptide (MroMA1) in complex with SAH  
Authors : Zheng, Y.; Ongpipattanakul, C.; Nair, S.K.  
Deposited on : 2022-02-07  
Resolution : 1.79 Å (reported)

This is a Full wwPDB X-ray Structure Validation Report for a publicly released PDB entry.

We welcome your comments at [validation@mail.wwpdb.org](mailto:validation@mail.wwpdb.org)

A user guide is available at

<https://www.wwpdb.org/validation/2017/XrayValidationReportHelp>

with specific help available everywhere you see the ⓘ symbol.

The types of validation reports are described at

<http://www.wwpdb.org/validation/2017/FAQs#types>.

---

The following versions of software and data (see [references ⓘ](#)) were used in the production of this report:

MolProbity : 4.02b-467  
Mogul : 1.8.5 (274361), CSD as541be (2020)  
Xtriage (Phenix) : 1.13  
EDS : 2.36  
buster-report : 1.1.7 (2018)  
Percentile statistics : 20191225.v01 (using entries in the PDB archive December 25th 2019)  
Refmac : 5.8.0158  
CCP4 : 7.0.044 (Gargrove)  
Ideal geometry (proteins) : Engh & Huber (2001)  
Ideal geometry (DNA, RNA) : Parkinson et al. (1996)  
Validation Pipeline (wwPDB-VP) : 2.36

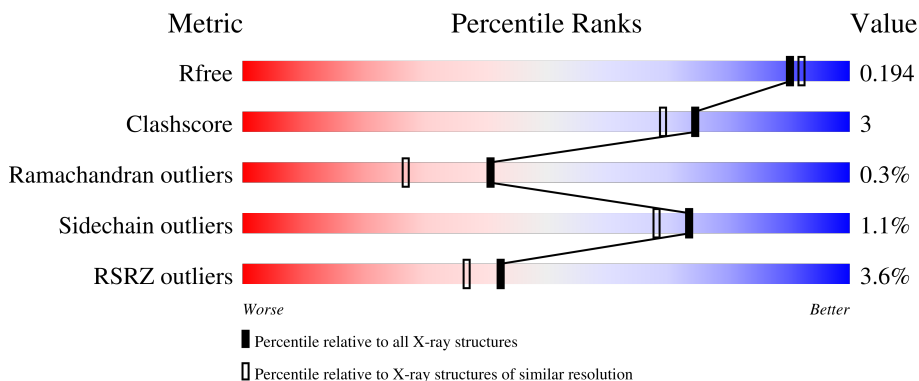
# 1 Overall quality at a glance i

The following experimental techniques were used to determine the structure:

*X-RAY DIFFRACTION*

The reported resolution of this entry is 1.79 Å.

Percentile scores (ranging between 0-100) for global validation metrics of the entry are shown in the following graphic. The table shows the number of entries on which the scores are based.



Metric	Whole archive (#Entries)	Similar resolution (#Entries, resolution range(Å))
$R_{free}$	130704	5950 (1.80-1.80)
Clashscore	141614	6793 (1.80-1.80)
Ramachandran outliers	138981	6697 (1.80-1.80)
Sidechain outliers	138945	6696 (1.80-1.80)
RSRZ outliers	127900	5850 (1.80-1.80)

The table below summarises the geometric issues observed across the polymeric chains and their fit to the electron density. The red, orange, yellow and green segments of the lower bar indicate the fraction of residues that contain outliers for  $\geq 3$ , 2, 1 and 0 types of geometric quality criteria respectively. A grey segment represents the fraction of residues that are not modelled. The numeric value for each fraction is indicated below the corresponding segment, with a dot representing fractions  $\leq 5\%$ . The upper red bar (where present) indicates the fraction of residues that have poor fit to the electron density. The numeric value is given above the bar.

Mol	Chain	Length	Quality of chain
1	A	400	 3% 87% 6% 6%
1	C	400	 4% 87% 9%
2	B	400	 3% 89% 8%
2	D	400	 3% 90% 6%

## 2 Entry composition [i](#)

There are 5 unique types of molecules in this entry. The entry contains 13661 atoms, of which 0 are hydrogens and 0 are deuteriums.

In the tables below, the ZeroOcc column contains the number of atoms modelled with zero occupancy, the AltConf column contains the number of residues with at least one atom in alternate conformation and the Trace column contains the number of residues modelled with at most 2 atoms.

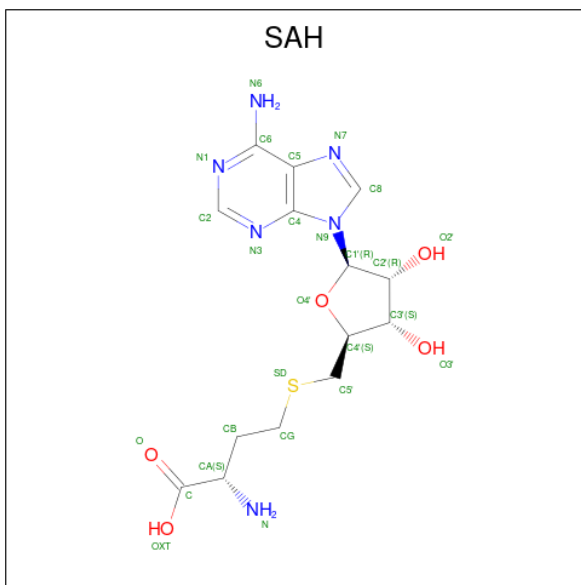
- Molecule 1 is a protein called MroMA1.

Mol	Chain	Residues	Atoms					ZeroOcc	AltConf	Trace
			Total	C	N	O	S			
1	A	374	Total 2901	C 1852	N 493	O 543	S 13	0	2	0
1	C	365	Total 2844	C 1814	N 483	O 535	S 12	0	3	0

- Molecule 2 is a protein called MroMA1.

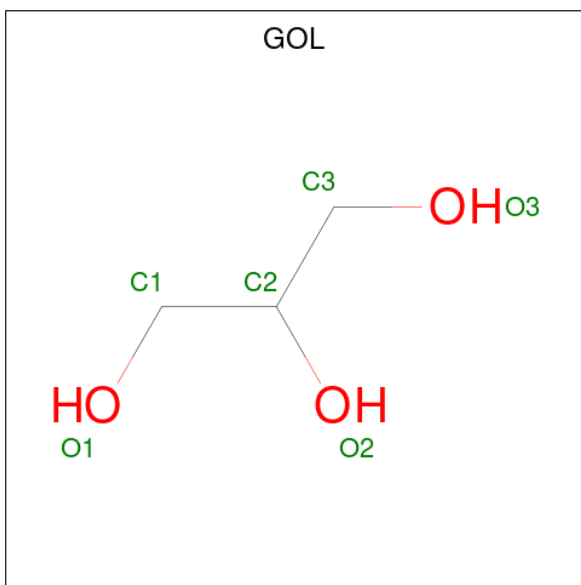
Mol	Chain	Residues	Atoms					ZeroOcc	AltConf	Trace
			Total	C	N	O	S			
2	B	392	Total 3050	C 1952	N 514	O 572	S 12	0	2	0
2	D	391	Total 3126	C 2002	N 524	O 587	S 13	0	15	0

- Molecule 3 is S-ADENOSYL-L-HOMOCYSTEINE (three-letter code: SAH) (formula:  $C_{14}H_{20}N_6O_5S$ ).



Mol	Chain	Residues	Atoms					ZeroOcc	AltConf
3	A	1	Total	C	N	O	S	0	0
			26	14	6	5	1		
3	B	1	Total	C	N	O	S	0	0
			26	14	6	5	1		
3	C	1	Total	C	N	O	S	0	0
			26	14	6	5	1		
3	D	1	Total	C	N	O	S	0	0
			26	14	6	5	1		

- Molecule 4 is GLYCEROL (three-letter code: GOL) (formula: C<sub>3</sub>H<sub>8</sub>O<sub>3</sub>).



Mol	Chain	Residues	Atoms			ZeroOcc	AltConf
4	B	1	Total	C	O	0	0
			6	3	3		
4	C	1	Total	C	O	0	0
			6	3	3		

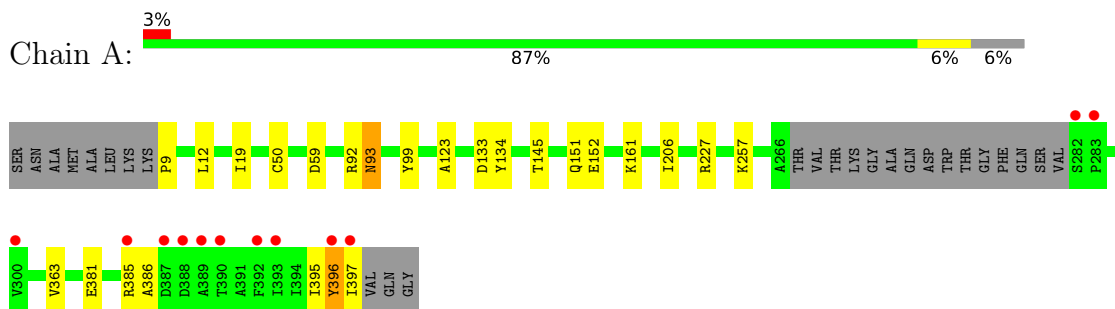
- Molecule 5 is water.

Mol	Chain	Residues	Atoms		ZeroOcc	AltConf
5	A	407	Total	O	0	0
			407	407		
5	B	417	Total	O	0	0
			417	417		
5	C	343	Total	O	0	0
			343	343		
5	D	457	Total	O	0	0
			457	457		

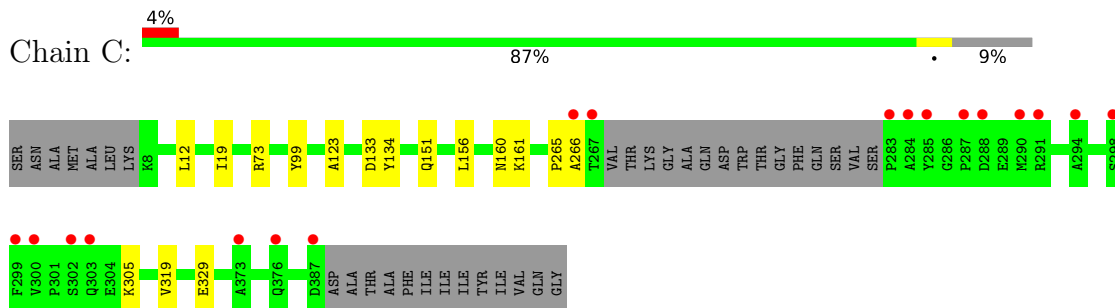
### 3 Residue-property plots [i](#)

These plots are drawn for all protein, RNA, DNA and oligosaccharide chains in the entry. The first graphic for a chain summarises the proportions of the various outlier classes displayed in the second graphic. The second graphic shows the sequence view annotated by issues in geometry and electron density. Residues are color-coded according to the number of geometric quality criteria for which they contain at least one outlier: green = 0, yellow = 1, orange = 2 and red = 3 or more. A red dot above a residue indicates a poor fit to the electron density ( $RSRZ > 2$ ). Stretches of 2 or more consecutive residues without any outlier are shown as a green connector. Residues present in the sample, but not in the model, are shown in grey.

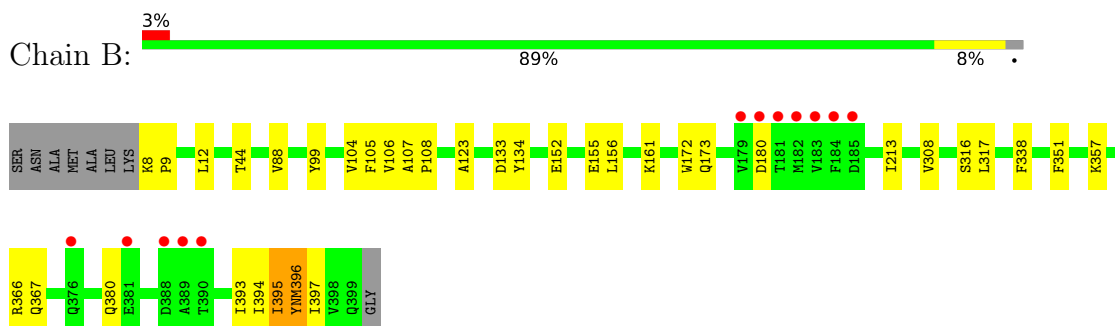
- Molecule 1: MroMA1



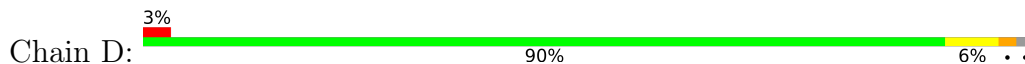
- Molecule 1: MroMA1

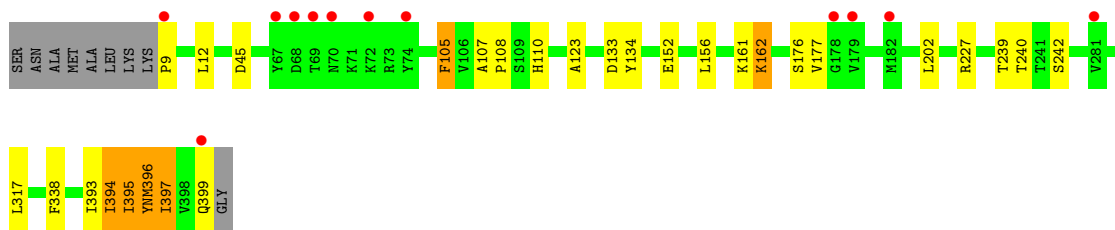


- Molecule 2: MroMA1



- Molecule 2: MroMA1





## 4 Data and refinement statistics i

Property	Value	Source
Space group	P 65	Depositor
Cell constants a, b, c, $\alpha$ , $\beta$ , $\gamma$	191.83Å 191.83Å 93.71Å 90.00° 90.00° 120.00°	Depositor
Resolution (Å)	25.00 – 1.79 95.92 – 1.79	Depositor EDS
% Data completeness (in resolution range)	99.9 (25.00-1.79) 100.0 (95.92-1.79)	Depositor EDS
$R_{merge}$	0.10	Depositor
$R_{sym}$	(Not available)	Depositor
$\langle I/\sigma(I) \rangle$ <sup>1</sup>	2.33 (at 1.80Å)	Xtrriage
Refinement program	REFMAC 5.8.0267	Depositor
R, $R_{free}$	0.167 , 0.192 0.169 , 0.194	Depositor DCC
$R_{free}$ test set	9018 reflections (4.92%)	wwPDB-VP
Wilson B-factor (Å <sup>2</sup> )	22.5	Xtrriage
Anisotropy	0.325	Xtrriage
Bulk solvent $k_{sol}$ (e/Å <sup>3</sup> ), $B_{sol}$ (Å <sup>2</sup> )	0.37 , 57.1	EDS
L-test for twinning <sup>2</sup>	$\langle  L  \rangle = 0.50$ , $\langle L^2 \rangle = 0.33$	Xtrriage
Estimated twinning fraction	0.019 for h,-h-k,-l	Xtrriage
$F_o, F_c$ correlation	0.97	EDS
Total number of atoms	13661	wwPDB-VP
Average B, all atoms (Å <sup>2</sup> )	30.0	wwPDB-VP

Xtrriage's analysis on translational NCS is as follows: *The largest off-origin peak in the Patterson function is 2.02% of the height of the origin peak. No significant pseudotranslation is detected.*

<sup>1</sup>Intensities estimated from amplitudes.

<sup>2</sup>Theoretical values of  $\langle |L| \rangle$ ,  $\langle L^2 \rangle$  for acentric reflections are 0.5, 0.333 respectively for untwinned datasets, and 0.375, 0.2 for perfectly twinned datasets.

## 5 Model quality [i](#)

### 5.1 Standard geometry [i](#)

Bond lengths and bond angles in the following residue types are not validated in this section: SAH, GOL, IML, YNM

The Z score for a bond length (or angle) is the number of standard deviations the observed value is removed from the expected value. A bond length (or angle) with  $|Z| > 5$  is considered an outlier worth inspection. RMSZ is the root-mean-square of all Z scores of the bond lengths (or angles).

Mol	Chain	Bond lengths		Bond angles	
		RMSZ	# Z  >5	RMSZ	# Z  >5
1	A	0.28	0/2970	0.56	1/4028 (0.0%)
1	C	0.28	0/2915	0.57	0/3952
2	B	0.28	0/3091	0.56	0/4194
2	D	0.28	0/3192	0.56	1/4333 (0.0%)
All	All	0.28	0/12168	0.56	2/16507 (0.0%)

There are no bond length outliers.

All (2) bond angle outliers are listed below:

Mol	Chain	Res	Type	Atoms	Z	Observed(°)	Ideal(°)
2	D	9	PRO	N-CA-CB	6.07	110.58	103.30
1	A	93	ASN	CB-CA-C	5.35	121.09	110.40

There are no chirality outliers.

There are no planarity outliers.

### 5.2 Too-close contacts [i](#)

In the following table, the Non-H and H(model) columns list the number of non-hydrogen atoms and hydrogen atoms in the chain respectively. The H(added) column lists the number of hydrogen atoms added and optimized by MolProbity. The Clashes column lists the number of clashes within the asymmetric unit, whereas Symm-Clashes lists symmetry-related clashes.

Mol	Chain	Non-H	H(model)	H(added)	Clashes	Symm-Clashes
1	A	2901	0	2901	19	0
1	C	2844	0	2848	7	0
2	B	3050	0	3058	32	0
2	D	3126	0	3139	26	0
3	A	26	0	19	0	0

*Continued on next page...*



Continued from previous page...

Mol	Chain	Non-H	H(model)	H(added)	Clashes	Symm-Clashes
3	B	26	0	19	0	0
3	C	26	0	19	0	0
3	D	26	0	19	0	0
4	B	6	0	8	2	0
4	C	6	0	8	2	0
5	A	407	0	0	5	0
5	B	417	0	0	5	0
5	C	343	0	0	2	0
5	D	457	0	0	5	0
All	All	13661	0	12038	76	0

The all-atom clashscore is defined as the number of clashes found per 1000 atoms (including hydrogen atoms). The all-atom clashscore for this structure is 3.

All (76) close contacts within the same asymmetric unit are listed below, sorted by their clash magnitude.

Atom-1	Atom-2	Interatomic distance (Å)	Clash overlap (Å)
5:A:628:HOH:O	4:C:502:GOL:H2	1.54	1.05
1:A:93:ASN:HB3	5:A:916:HOH:O	1.64	0.94
2:B:8:LYS:N	2:B:9:PRO:HD3	1.89	0.88
2:D:397:ILE:HG13	5:D:720:HOH:O	1.72	0.88
2:D:317[B]:LEU:HD11	2:D:338:PHE:HE2	1.40	0.85
4:B:502:GOL:H12	5:B:926:HOH:O	1.80	0.79
2:B:316[B]:SER:OG	4:B:502:GOL:H32	1.84	0.78
2:D:239[B]:THR:OG1	2:D:240[B]:THR:N	2.12	0.74
1:A:50[A]:CYS:SG	2:B:308:VAL:HG21	2.30	0.72
2:B:8:LYS:N	2:B:9:PRO:CD	2.57	0.68
1:A:161:LYS:HE3	5:B:605:HOH:O	1.95	0.67
1:C:156:LEU:HD12	1:C:161:LYS:HB2	1.79	0.64
2:D:105:PHE:HZ	2:D:152:GLU:HG3	1.64	0.63
1:A:50[A]:CYS:SG	2:B:308:VAL:CG2	2.87	0.62
2:D:156[A]:LEU:HD12	2:D:161:LYS:HB2	1.81	0.62
2:B:156:LEU:HD12	2:B:161:LYS:HB2	1.81	0.62
2:B:152:GLU:OE2	2:B:173:GLN:NE2	2.33	0.62
1:A:59:ASP:OD2	1:A:92[B]:ARG:NH1	2.33	0.61
2:D:317[B]:LEU:HD11	2:D:338:PHE:CE2	2.29	0.60
2:B:317[A]:LEU:HD11	2:B:338:PHE:HE1	1.69	0.57
1:A:227:ARG:HD2	5:A:768:HOH:O	2.05	0.57
1:A:206:ILE:HG13	5:A:893:HOH:O	2.06	0.55
1:C:305:LYS:HE2	5:D:608:HOH:O	2.07	0.55
5:C:646:HOH:O	2:D:110:HIS:HE1	1.90	0.54

Continued on next page...

*Continued from previous page...*

Atom-1	Atom-2	Interatomic distance (Å)	Clash overlap (Å)
1:A:9:PRO:HB3	5:A:878:HOH:O	2.06	0.54
1:A:397:ILE:C	2:B:106:VAL:HA	2.28	0.54
2:D:396:YNM:HM3C	2:D:397:ILE:N	2.22	0.54
2:B:317[A]:LEU:CD1	2:B:338:PHE:HE1	2.21	0.54
2:D:317[B]:LEU:CD1	2:D:338:PHE:HE2	2.19	0.53
1:A:152:GLU:HG3	2:B:397:ILE:HD11	1.90	0.52
2:B:396:YNM:HD1	2:B:396:YNM:HM2C	1.91	0.52
1:A:381:GLU:O	1:A:385:ARG:HB3	2.08	0.52
2:B:8:LYS:HA	5:B:933:HOH:O	2.10	0.51
2:B:396:YNM:HM3C	2:B:397:ILE:H	1.74	0.51
2:B:396:YNM:HM3C	2:B:397:ILE:N	2.25	0.51
2:D:396:YNM:HM3C	2:D:397:ILE:H	1.75	0.51
1:A:363:VAL:HG21	1:A:386:ALA:HB2	1.93	0.49
2:D:396:YNM:HD1	2:D:396:YNM:HM2C	1.94	0.49
1:A:397:ILE:C	2:B:107:ALA:H	2.16	0.49
1:A:145:THR:O	2:B:155:GLU:OE2	2.31	0.49
2:B:105:PHE:HE2	2:B:172:TRP:CD2	2.31	0.48
5:C:646:HOH:O	2:D:110:HIS:CE1	2.64	0.47
2:D:12:LEU:O	2:D:123:ALA:HA	2.14	0.47
2:D:176:SER:HB3	2:D:240[A]:THR:HB	1.96	0.47
2:B:44:THR:HG23	2:B:99:TYR:CD1	2.50	0.45
2:B:107:ALA:N	2:B:108:PRO:HD2	2.32	0.45
2:B:12:LEU:O	2:B:123:ALA:HA	2.17	0.45
2:B:213:ILE:HG23	5:B:718:HOH:O	2.16	0.45
1:C:12:LEU:O	1:C:123:ALA:HA	2.17	0.45
2:D:202:LEU:HB3	2:D:227:ARG:HB3	1.98	0.44
2:D:162:LYS:N	2:D:162:LYS:HD2	2.31	0.44
2:D:227:ARG:NH2	5:D:606:HOH:O	2.50	0.44
2:D:397:ILE:HG12	5:D:782:HOH:O	2.18	0.44
1:C:19:ILE:HG23	1:C:99:TYR:OH	2.18	0.44
1:A:133:ASP:OD2	2:B:133:ASP:OD2	2.36	0.43
2:B:317[A]:LEU:HD11	2:B:338:PHE:CE1	2.51	0.43
2:B:351:PHE:CE2	2:B:380:GLN:HG3	2.54	0.43
2:B:393:ILE:HA	2:B:394:IML:HN1	1.61	0.43
2:B:357:LYS:HE2	5:B:748:HOH:O	2.18	0.43
2:D:240[B]:THR:C	2:D:242[B]:SER:H	2.22	0.43
2:B:12:LEU:HB2	2:B:88:VAL:HG21	2.01	0.42
1:A:395:ILE:O	1:A:396:TYR:C	2.57	0.42
2:B:366:ARG:O	2:B:367:GLN:HG3	2.19	0.42
2:D:393:ILE:HA	2:D:394:IML:HN1	1.67	0.42
2:D:399:GLN:HB3	5:D:723:HOH:O	2.18	0.42

*Continued on next page...*

Continued from previous page...

Atom-1	Atom-2	Interatomic distance (Å)	Clash overlap (Å)
1:A:19:ILE:HG23	1:A:99:TYR:OH	2.20	0.42
2:D:395:IML:HA	2:D:396:YNM:HM1C	1.58	0.42
1:A:12:LEU:O	1:A:123:ALA:HA	2.19	0.42
2:D:239[A]:THR:HG22	2:D:242[A]:SER:OG	2.20	0.42
2:D:107:ALA:N	2:D:108:PRO:HD2	2.35	0.41
1:C:319:VAL:HG11	4:C:502:GOL:H31	2.03	0.41
1:A:50[A]:CYS:SG	2:B:308:VAL:HG22	2.61	0.41
2:B:395:IML:HA	2:B:396:YNM:HM1C	1.61	0.41
2:B:104:VAL:O	2:B:105:PHE:HB2	2.21	0.41
1:C:73:ARG:NE	2:D:395:IML:HG13	2.36	0.40
1:C:133:ASP:OD2	2:D:133:ASP:OD2	2.39	0.40

There are no symmetry-related clashes.

## 5.3 Torsion angles [i](#)

### 5.3.1 Protein backbone [i](#)

In the following table, the Percentiles column shows the percent Ramachandran outliers of the chain as a percentile score with respect to all X-ray entries followed by that with respect to entries of similar resolution.

The Analysed column shows the number of residues for which the backbone conformation was analysed, and the total number of residues.

Mol	Chain	Analysed	Favoured	Allowed	Outliers	Percentiles
1	A	372/400 (93%)	364 (98%)	7 (2%)	1 (0%)	41 27
1	C	364/400 (91%)	353 (97%)	9 (2%)	2 (0%)	29 15
2	B	389/400 (97%)	379 (97%)	9 (2%)	1 (0%)	41 27
2	D	401/400 (100%)	393 (98%)	8 (2%)	0	100 100
All	All	1526/1600 (95%)	1489 (98%)	33 (2%)	4 (0%)	41 27

All (4) Ramachandran outliers are listed below:

Mol	Chain	Res	Type
1	A	396	TYR
1	C	265	PRO
1	C	266	ALA
2	B	180	ASP

### 5.3.2 Protein sidechains [i](#)

In the following table, the Percentiles column shows the percent sidechain outliers of the chain as a percentile score with respect to all X-ray entries followed by that with respect to entries of similar resolution.

The Analysed column shows the number of residues for which the sidechain conformation was analysed, and the total number of residues.

Mol	Chain	Analysed	Rotameric	Outliers	Percentiles	
1	A	309/329 (94%)	306 (99%)	3 (1%)	76	71
1	C	305/329 (93%)	299 (98%)	6 (2%)	55	44
2	B	323/326 (99%)	322 (100%)	1 (0%)	92	91
2	D	334/326 (102%)	328 (98%)	6 (2%)	59	48
All	All	1271/1310 (97%)	1255 (99%)	16 (1%)	73	62

All (16) residues with a non-rotameric sidechain are listed below:

Mol	Chain	Res	Type
1	A	134	TYR
1	A	151	GLN
1	A	257	LYS
2	B	134	TYR
1	C	134	TYR
1	C	151	GLN
1	C	160[A]	ASN
1	C	160[B]	ASN
1	C	329[A]	GLU
1	C	329[B]	GLU
2	D	45	ASP
2	D	105	PHE
2	D	134	TYR
2	D	162	LYS
2	D	177	VAL
2	D	397	ILE

Sometimes sidechains can be flipped to improve hydrogen bonding and reduce clashes. All (3) such sidechains are listed below:

Mol	Chain	Res	Type
1	A	173	GLN
2	B	315	GLN
1	C	173	GLN

### 5.3.3 RNA [i](#)

There are no RNA molecules in this entry.

## 5.4 Non-standard residues in protein, DNA, RNA chains [i](#)

6 non-standard protein/DNA/RNA residues are modelled in this entry.

In the following table, the Counts columns list the number of bonds (or angles) for which Mogul statistics could be retrieved, the number of bonds (or angles) that are observed in the model and the number of bonds (or angles) that are defined in the Chemical Component Dictionary. The Link column lists molecule types, if any, to which the group is linked. The Z score for a bond length (or angle) is the number of standard deviations the observed value is removed from the expected value. A bond length (or angle) with  $|Z| > 2$  is considered an outlier worth inspection. RMSZ is the root-mean-square of all Z scores of the bond lengths (or angles).

Mol	Type	Chain	Res	Link	Bond lengths			Bond angles		
					Counts	RMSZ	# Z  > 2	Counts	RMSZ	# Z  > 2
2	IML	B	394	2	7,8,9	0.52	0	7,9,11	0.92	0
2	IML	D	395	2	7,8,9	0.76	0	7,9,11	1.25	2 (28%)
2	IML	D	394	2	7,8,9	0.57	0	7,9,11	1.01	1 (14%)
2	IML	B	395	2	7,8,9	0.67	0	7,9,11	1.24	1 (14%)
2	YNM	D	396	2	12,13,14	0.63	0	15,16,18	1.35	1 (6%)
2	YNM	B	396	2	12,13,14	0.61	0	15,16,18	1.57	2 (13%)

In the following table, the Chirals column lists the number of chiral outliers, the number of chiral centers analysed, the number of these observed in the model and the number defined in the Chemical Component Dictionary. Similar counts are reported in the Torsion and Rings columns. '-' means no outliers of that kind were identified.

Mol	Type	Chain	Res	Link	Chirals	Torsions	Rings
2	IML	B	394	2	-	3/8/10/12	-
2	IML	D	395	2	-	4/8/10/12	-
2	IML	D	394	2	-	3/8/10/12	-
2	IML	B	395	2	-	4/8/10/12	-
2	YNM	D	396	2	-	1/5/8/10	0/1/1/1
2	YNM	B	396	2	-	1/5/8/10	0/1/1/1

There are no bond length outliers.

All (7) bond angle outliers are listed below:

Mol	Chain	Res	Type	Atoms	Z	Observed(°)	Ideal(°)
2	B	396	YNM	CG-CB-CA	-3.39	108.78	113.63
2	B	396	YNM	CB-CA-C	-3.38	105.25	111.65
2	D	396	YNM	CB-CA-C	-3.06	105.84	111.65
2	B	395	IML	O-C-CA	-2.69	117.32	124.83
2	D	395	IML	O-C-CA	-2.26	118.53	124.83
2	D	394	IML	O-C-CA	-2.16	118.80	124.83
2	D	395	IML	C-CA-N	2.16	118.11	110.88

There are no chirality outliers.

All (16) torsion outliers are listed below:

Mol	Chain	Res	Type	Atoms
2	B	394	IML	CB-CA-N-CN
2	B	394	IML	C-CA-CB-CG1
2	D	394	IML	CB-CA-N-CN
2	B	396	YNM	O-C-CA-CB
2	D	396	YNM	O-C-CA-CB
2	B	395	IML	CA-CB-CG1-CD1
2	D	395	IML	CA-CB-CG1-CD1
2	B	394	IML	N-CA-CB-CG1
2	B	395	IML	CG2-CB-CG1-CD1
2	D	395	IML	CG2-CB-CG1-CD1
2	D	394	IML	C-CA-CB-CG1
2	B	395	IML	CB-CA-N-CN
2	D	395	IML	CB-CA-N-CN
2	D	394	IML	N-CA-CB-CG1
2	D	395	IML	C-CA-CB-CG2
2	B	395	IML	O-C-CA-CB

There are no ring outliers.

6 monomers are involved in 11 short contacts:

Mol	Chain	Res	Type	Clashes	Symm-Clashes
2	B	394	IML	1	0
2	D	395	IML	2	0
2	D	394	IML	1	0
2	B	395	IML	1	0
2	D	396	YNM	4	0
2	B	396	YNM	4	0

## 5.5 Carbohydrates [i](#)

There are no monosaccharides in this entry.

## 5.6 Ligand geometry [i](#)

6 ligands are modelled in this entry.

In the following table, the Counts columns list the number of bonds (or angles) for which Mogul statistics could be retrieved, the number of bonds (or angles) that are observed in the model and the number of bonds (or angles) that are defined in the Chemical Component Dictionary. The Link column lists molecule types, if any, to which the group is linked. The Z score for a bond length (or angle) is the number of standard deviations the observed value is removed from the expected value. A bond length (or angle) with  $|Z| > 2$  is considered an outlier worth inspection. RMSZ is the root-mean-square of all Z scores of the bond lengths (or angles).

Mol	Type	Chain	Res	Link	Bond lengths			Bond angles		
					Counts	RMSZ	# Z  > 2	Counts	RMSZ	# Z  > 2
3	SAH	A	500	-	24,28,28	0.62	0	25,40,40	0.99	3 (12%)
3	SAH	C	501	-	24,28,28	0.64	0	25,40,40	1.05	3 (12%)
3	SAH	B	501	-	24,28,28	0.70	1 (4%)	25,40,40	1.07	2 (8%)
3	SAH	D	500	-	24,28,28	0.62	0	25,40,40	0.96	2 (8%)
4	GOL	C	502	-	5,5,5	0.16	0	5,5,5	0.45	0
4	GOL	B	502	-	5,5,5	0.09	0	5,5,5	0.29	0

In the following table, the Chirals column lists the number of chiral outliers, the number of chiral centers analysed, the number of these observed in the model and the number defined in the Chemical Component Dictionary. Similar counts are reported in the Torsion and Rings columns. '-' means no outliers of that kind were identified.

Mol	Type	Chain	Res	Link	Chirals	Torsions	Rings
3	SAH	A	500	-	-	2/11/31/31	0/3/3/3
3	SAH	C	501	-	-	4/11/31/31	0/3/3/3
3	SAH	B	501	-	-	4/11/31/31	0/3/3/3
3	SAH	D	500	-	-	5/11/31/31	0/3/3/3
4	GOL	C	502	-	-	0/4/4/4	-
4	GOL	B	502	-	-	4/4/4/4	-

All (1) bond length outliers are listed below:

Mol	Chain	Res	Type	Atoms	Z	Observed(Å)	Ideal(Å)
3	B	501	SAH	OXT-C	-2.19	1.23	1.30

All (10) bond angle outliers are listed below:

Mol	Chain	Res	Type	Atoms	Z	Observed(°)	Ideal(°)
3	B	501	SAH	OXT-C-O	-3.58	115.97	124.09
3	C	501	SAH	OXT-C-O	-2.76	117.81	124.09
3	D	500	SAH	OXT-C-O	-2.76	117.81	124.09
3	B	501	SAH	C5-C6-N6	2.44	124.05	120.35
3	D	500	SAH	C5-C6-N6	2.38	123.97	120.35
3	C	501	SAH	OXT-C-CA	2.33	121.31	113.38
3	A	500	SAH	OXT-C-O	-2.32	118.83	124.09
3	A	500	SAH	C5-C6-N6	2.31	123.86	120.35
3	C	501	SAH	C5-C6-N6	2.30	123.85	120.35
3	A	500	SAH	OXT-C-CA	2.26	121.09	113.38

There are no chirality outliers.

All (19) torsion outliers are listed below:

Mol	Chain	Res	Type	Atoms
3	A	500	SAH	N-CA-CB-CG
3	A	500	SAH	C-CA-CB-CG
3	C	501	SAH	N-CA-CB-CG
4	B	502	GOL	O1-C1-C2-C3
4	B	502	GOL	O2-C2-C3-O3
4	B	502	GOL	C1-C2-C3-O3
4	B	502	GOL	O1-C1-C2-O2
3	C	501	SAH	C-CA-CB-CG
3	D	500	SAH	C-CA-CB-CG
3	B	501	SAH	OXT-C-CA-CB
3	D	500	SAH	OXT-C-CA-CB
3	D	500	SAH	N-CA-CB-CG
3	B	501	SAH	C-CA-CB-CG
3	B	501	SAH	O-C-CA-CB
3	D	500	SAH	O-C-CA-CB
3	C	501	SAH	CB-CG-SD-C5'
3	B	501	SAH	OXT-C-CA-N
3	D	500	SAH	OXT-C-CA-N
3	C	501	SAH	OXT-C-CA-CB

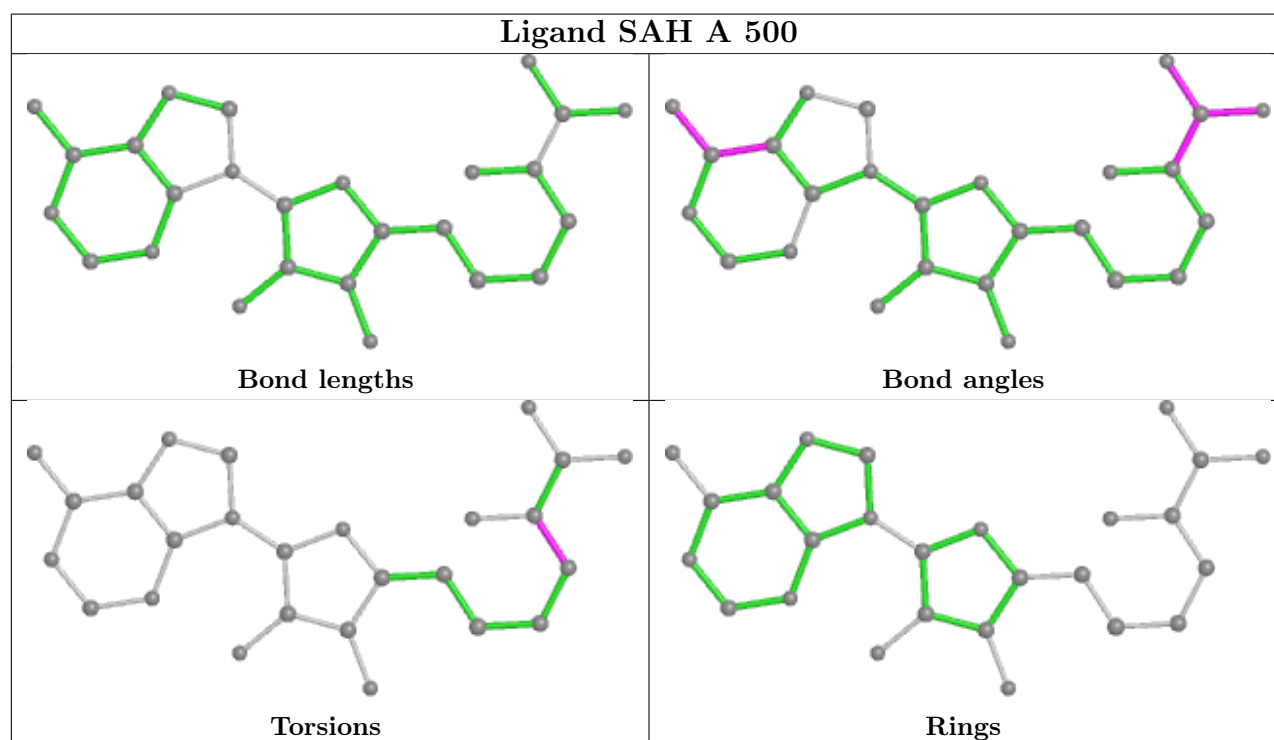
There are no ring outliers.

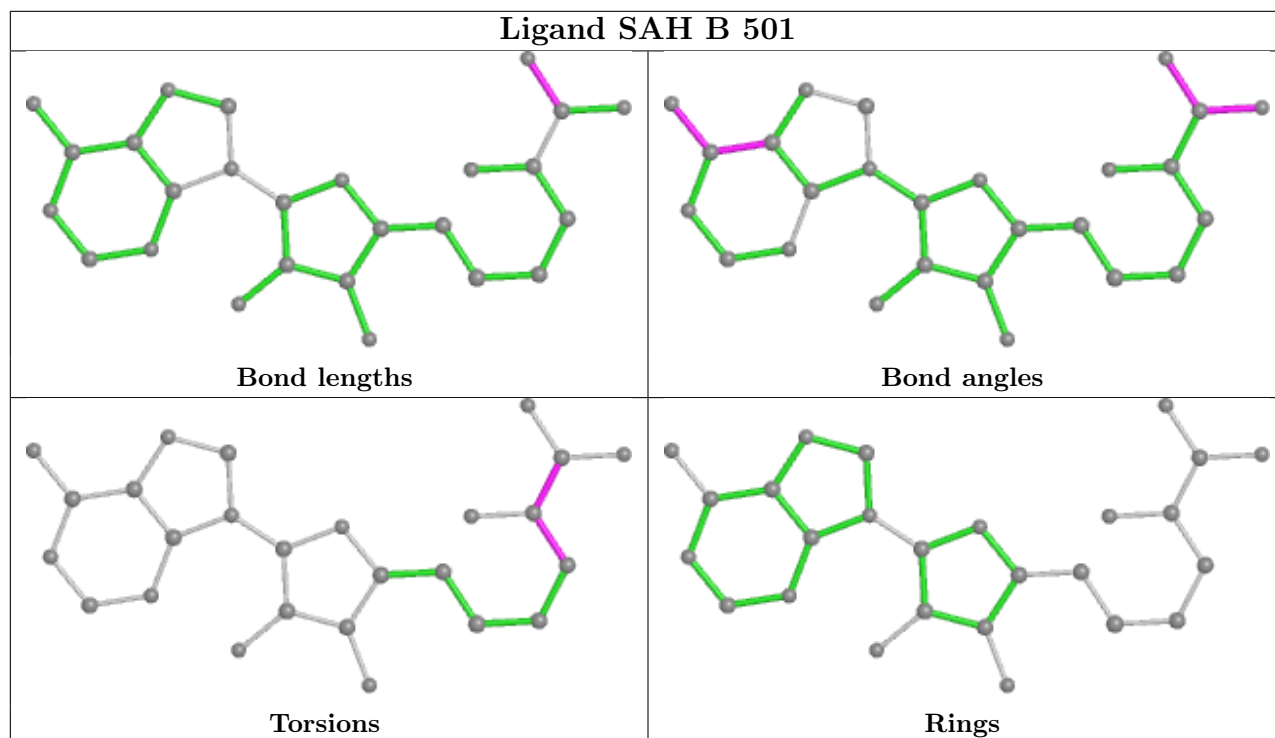
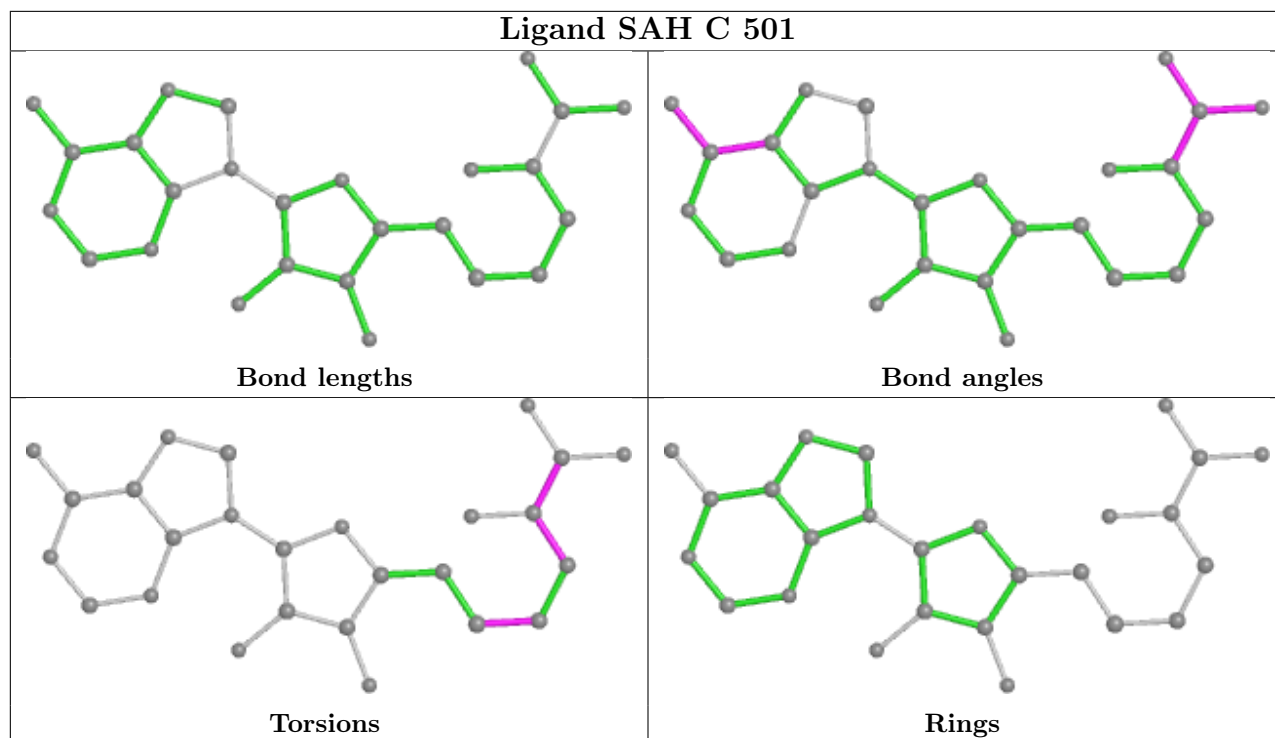
2 monomers are involved in 4 short contacts:

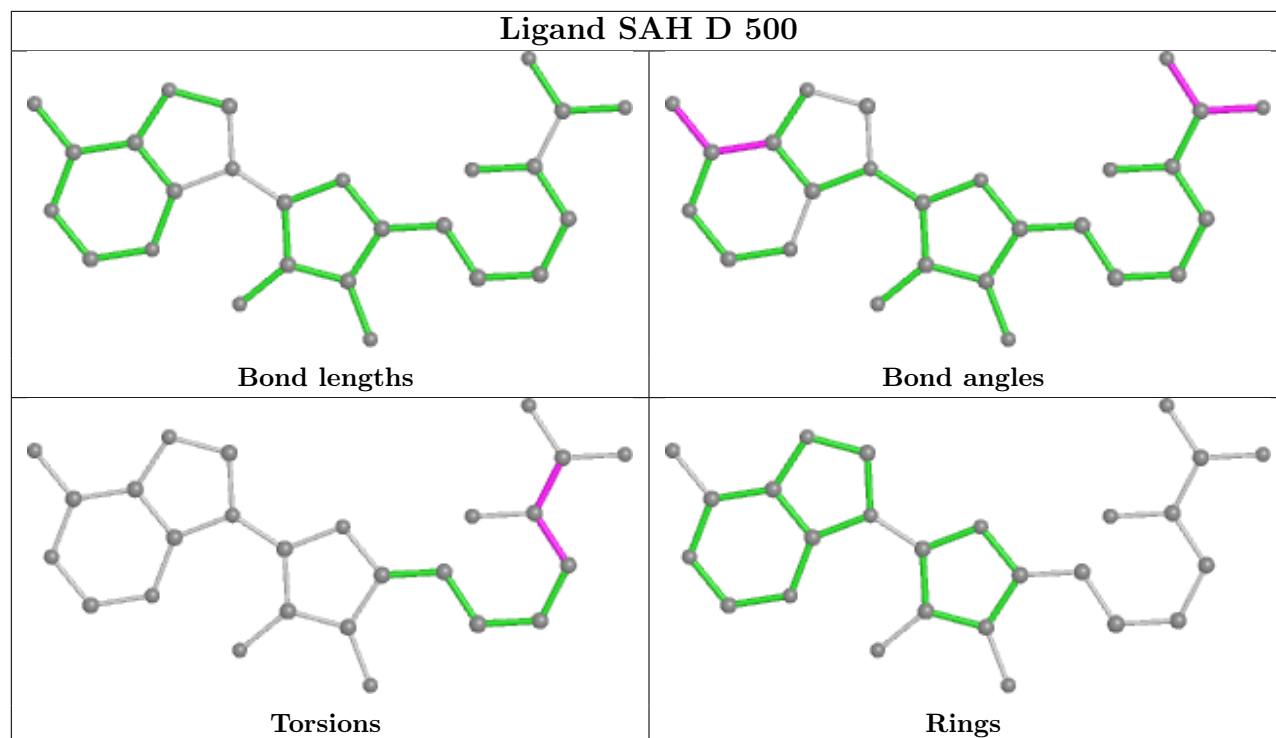
Mol	Chain	Res	Type	Clashes	Symm-Clashes
4	C	502	GOL	2	0
4	B	502	GOL	2	0



The following is a two-dimensional graphical depiction of Mogul quality analysis of bond lengths, bond angles, torsion angles, and ring geometry for all instances of the Ligand of Interest. In addition, ligands with molecular weight > 250 and outliers as shown on the validation Tables will also be included. For torsion angles, if less than 5% of the Mogul distribution of torsion angles is within 10 degrees of the torsion angle in question, then that torsion angle is considered an outlier. Any bond that is central to one or more torsion angles identified as an outlier by Mogul will be highlighted in the graph. For rings, the root-mean-square deviation (RMSD) between the ring in question and similar rings identified by Mogul is calculated over all ring torsion angles. If the average RMSD is greater than 60 degrees and the minimal RMSD between the ring in question and any Mogul-identified rings is also greater than 60 degrees, then that ring is considered an outlier. The outliers are highlighted in purple. The color gray indicates Mogul did not find sufficient equivalents in the CSD to analyse the geometry.







## 5.7 Other polymers [i](#)

There are no such residues in this entry.

## 5.8 Polymer linkage issues [i](#)

There are no chain breaks in this entry.

## 6 Fit of model and data

### 6.1 Protein, DNA and RNA chains

In the following table, the column labelled ‘#RSRZ > 2’ contains the number (and percentage) of RSRZ outliers, followed by percent RSRZ outliers for the chain as percentile scores relative to all X-ray entries and entries of similar resolution. The OWAB column contains the minimum, median, 95<sup>th</sup> percentile and maximum values of the occupancy-weighted average B-factor per residue. The column labelled ‘Q < 0.9’ lists the number of (and percentage) of residues with an average occupancy less than 0.9.

Mol	Chain	Analysed	<RSRZ>	#RSRZ>2	OWAB(Å <sup>2</sup> )	Q<0.9
1	A	374/400 (93%)	-0.09	12 (3%) 47 41	15, 25, 56, 94	0
1	C	365/400 (91%)	0.09	18 (4%) 29 24	16, 26, 65, 107	0
2	B	389/400 (97%)	0.04	12 (3%) 49 43	15, 27, 55, 150	0
2	D	388/400 (97%)	-0.12	12 (3%) 49 43	16, 24, 45, 91	0
All	All	1516/1600 (94%)	-0.02	54 (3%) 42 37	15, 25, 56, 150	0

All (54) RSRZ outliers are listed below:

Mol	Chain	Res	Type	RSRZ
1	C	267	THR	12.5
2	B	181	THR	11.3
2	B	182	MET	10.4
2	B	183	VAL	9.1
2	B	184	PHE	7.9
2	D	70	ASN	6.0
1	C	299	PHE	5.8
2	D	69	THR	5.7
1	C	283	PRO	5.4
1	C	266	ALA	5.3
2	D	281	VAL	5.3
1	A	396	TYR	5.2
1	A	397	ILE	5.2
1	C	387	ASP	4.9
2	B	180	ASP	4.7
1	A	389	ALA	4.4
1	C	373	ALA	4.2
2	B	185	ASP	4.0
1	A	388	ASP	3.9
1	A	282	SER	3.7
2	B	389	ALA	3.7

*Continued on next page...*

*Continued from previous page...*

Mol	Chain	Res	Type	RSRZ
1	C	300	VAL	3.7
2	B	179	VAL	3.6
2	B	390	THR	3.5
1	A	392	PHE	3.4
2	D	179	VAL	3.3
1	C	294	ALA	3.3
1	C	291	ARG	3.1
2	D	399	GLN	3.1
1	C	284	ALA	3.0
2	B	381	GLU	3.0
2	D	72	LYS	3.0
1	C	287	PRO	2.9
2	D	74	TYR	2.9
1	A	387	ASP	2.8
1	A	390	THR	2.8
2	D	67	TYR	2.8
1	C	303	GLN	2.8
1	C	290	MET	2.7
1	C	285	TYR	2.7
2	B	388	ASP	2.6
2	B	376	GLN	2.5
2	D	178	GLY	2.4
1	A	385	ARG	2.4
2	D	9	PRO	2.2
2	D	68	ASP	2.2
1	C	302	SER	2.2
1	C	288	ASP	2.2
2	D	182	MET	2.1
1	C	298	SER	2.1
1	A	283	PRO	2.1
1	A	300	VAL	2.1
1	A	393	ILE	2.1
1	C	376	GLN	2.0

## 6.2 Non-standard residues in protein, DNA, RNA chains [i](#)

In the following table, the Atoms column lists the number of modelled atoms in the group and the number defined in the chemical component dictionary. The B-factors column lists the minimum, median, 95<sup>th</sup> percentile and maximum values of B factors of atoms in the group. The column labelled 'Q< 0.9' lists the number of atoms with occupancy less than 0.9.

Mol	Type	Chain	Res	Atoms	RSCC	RSR	B-factors( $\text{\AA}^2$ )	Q<0.9
2	IML	D	394	9/10	0.89	0.17	27,28,28,29	0
2	IML	B	394	9/10	0.90	0.11	23,25,26,26	0
2	YNM	B	396	13/14	0.93	0.13	20,25,29,30	0
2	YNM	D	396	13/14	0.93	0.16	20,26,33,35	0
2	IML	D	395	9/10	0.95	0.13	22,27,32,34	0
2	IML	B	395	9/10	0.96	0.11	22,24,27,30	0

### 6.3 Carbohydrates [i](#)

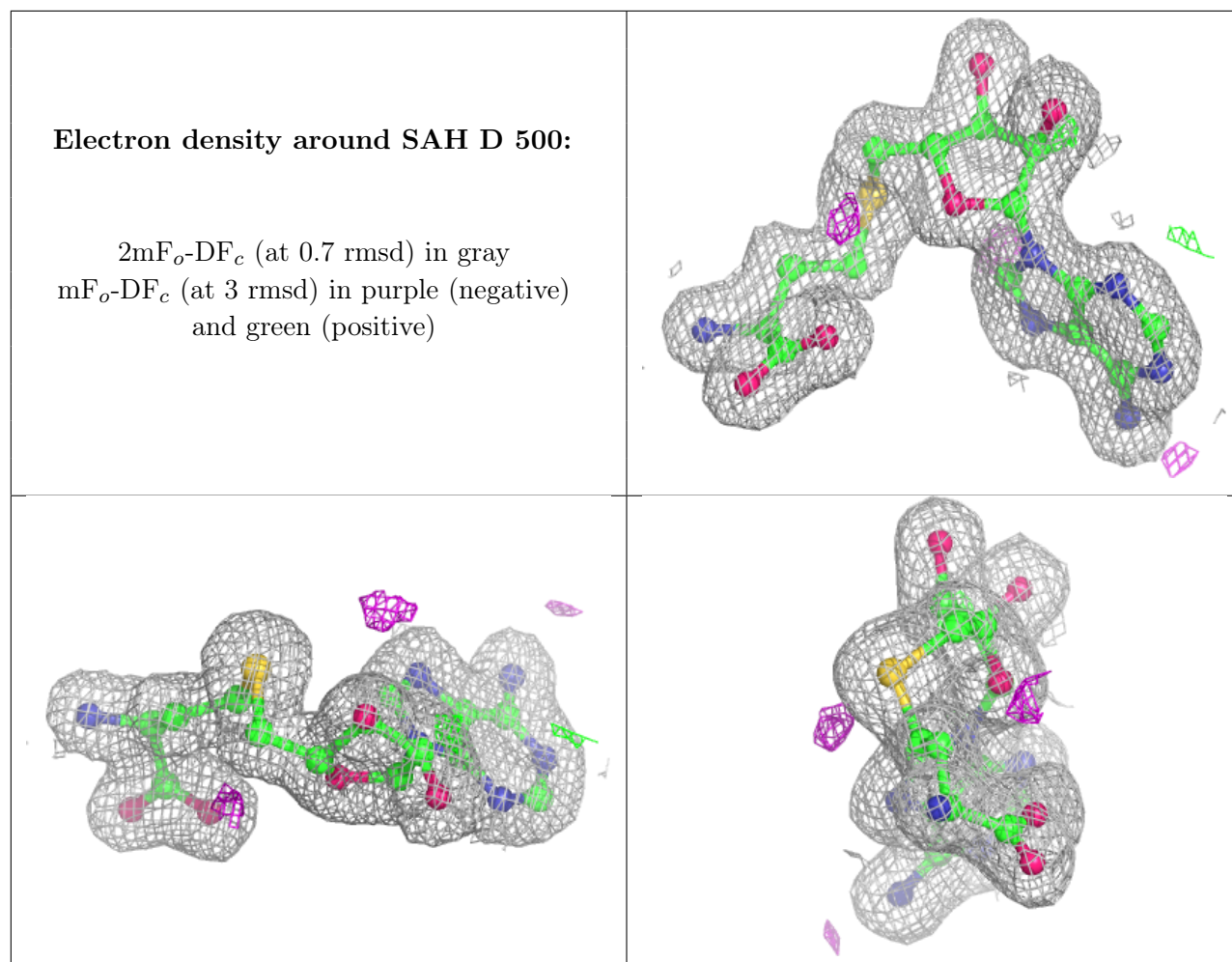
There are no monosaccharides in this entry.

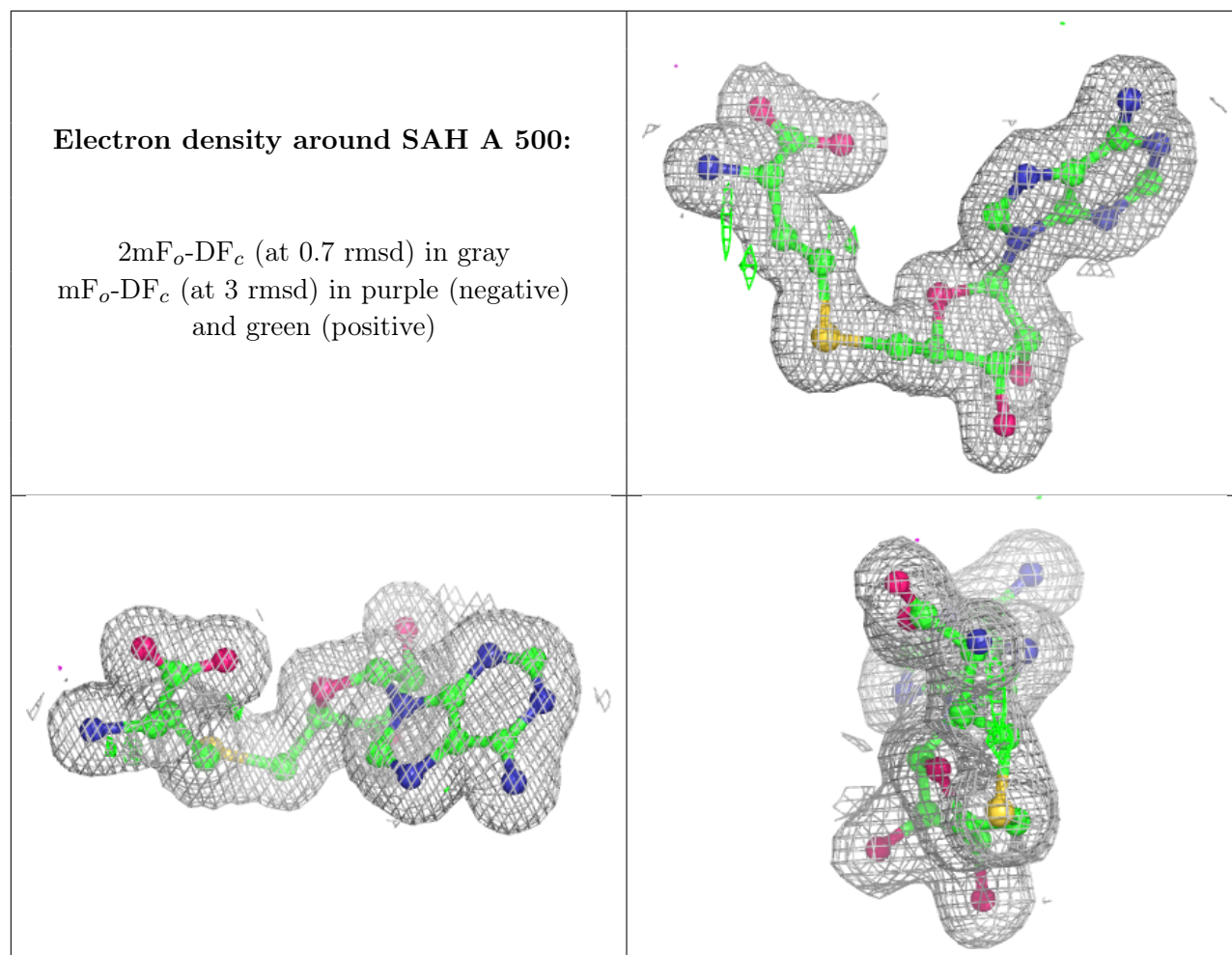
### 6.4 Ligands [i](#)

In the following table, the Atoms column lists the number of modelled atoms in the group and the number defined in the chemical component dictionary. The B-factors column lists the minimum, median, 95<sup>th</sup> percentile and maximum values of B factors of atoms in the group. The column labelled 'Q< 0.9' lists the number of atoms with occupancy less than 0.9.

Mol	Type	Chain	Res	Atoms	RSCC	RSR	B-factors( $\text{\AA}^2$ )	Q<0.9
4	GOL	B	502	6/6	0.74	0.18	37,46,48,48	0
4	GOL	C	502	6/6	0.82	0.15	31,39,39,43	0
3	SAH	D	500	26/26	0.98	0.07	17,17,19,19	0
3	SAH	A	500	26/26	0.98	0.09	16,17,20,21	0
3	SAH	C	501	26/26	0.98	0.08	17,19,22,24	0
3	SAH	B	501	26/26	0.99	0.08	16,18,19,19	0

The following is a graphical depiction of the model fit to experimental electron density of all instances of the Ligand of Interest. In addition, ligands with molecular weight > 250 and outliers as shown on the geometry validation Tables will also be included. Each fit is shown from different orientation to approximate a three-dimensional view.

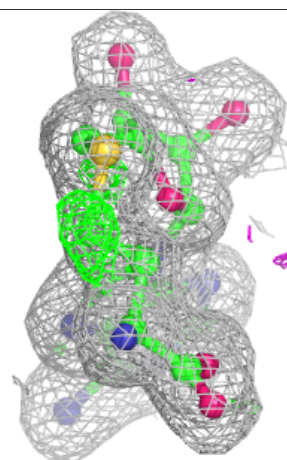
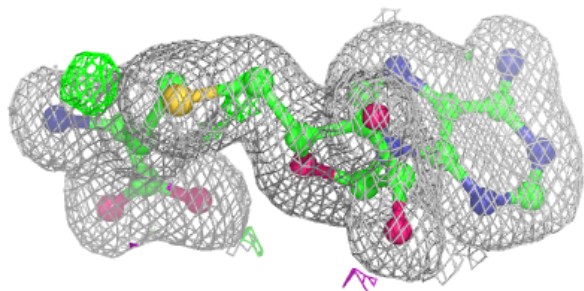
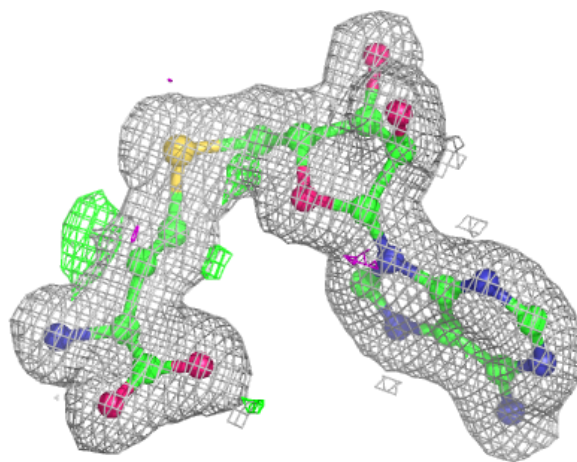


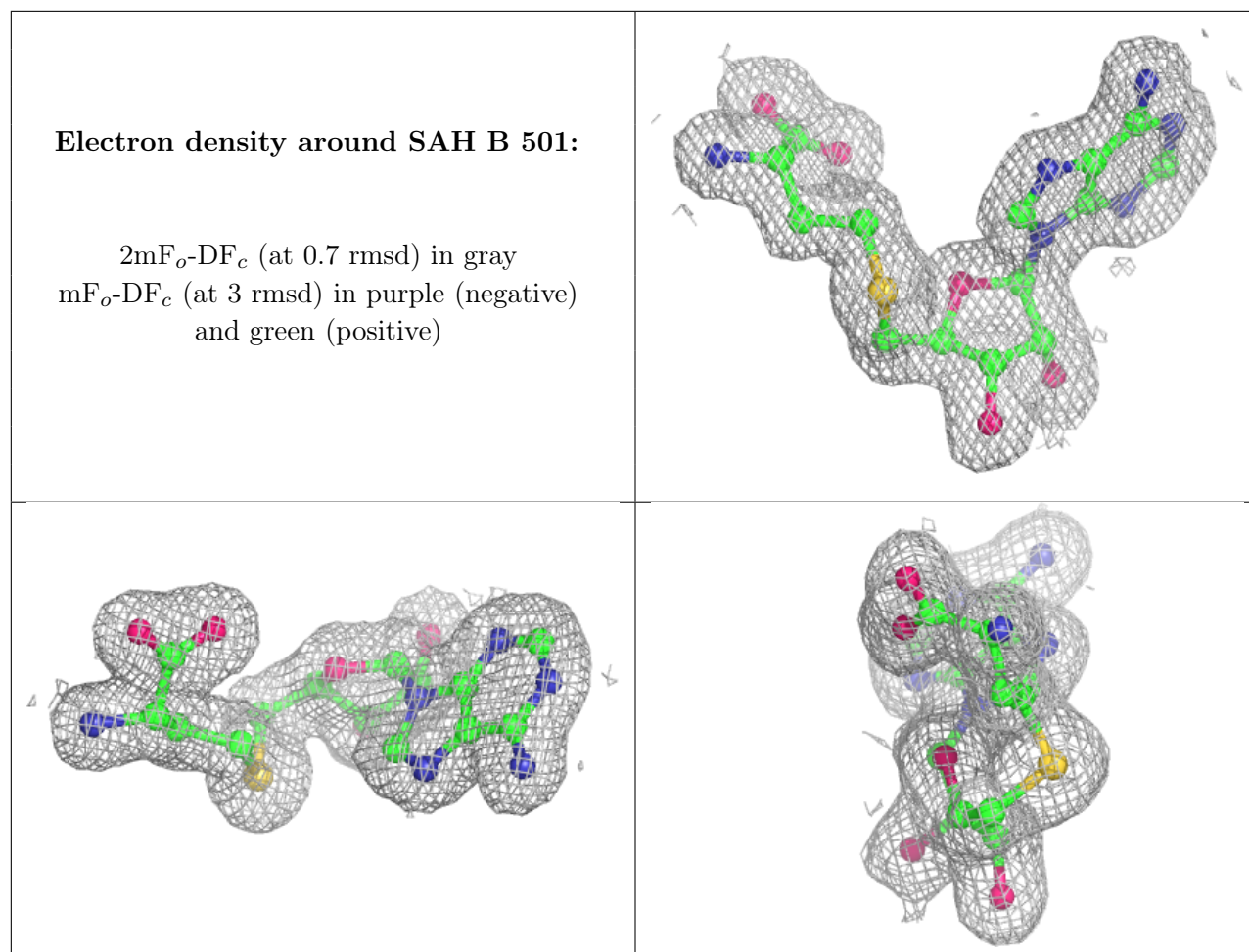




**Electron density around SAH C 501:**

$2mF_o-DF_c$  (at 0.7 rmsd) in gray  
 $mF_o-DF_c$  (at 3 rmsd) in purple (negative)  
and green (positive)





## 6.5 Other polymers [i](#)

There are no such residues in this entry.