



wwPDB X-ray Structure Validation Summary Report ⓘ

Sep 24, 2023 – 01:01 PM EDT

PDB ID : 5U24
Title : X-ray structure of the WlaRG aminotransferase from campylobacter jejuni, K184A mutant in complex with TDP-Fuc3N
Authors : Holden, H.M.; Thoden, J.B.; Dow, G.T.; Gilbert, M.
Deposited on : 2016-11-29
Resolution : 1.70 Å(reported)

This is a wwPDB X-ray Structure Validation Summary Report for a publicly released PDB entry.

We welcome your comments at validation@mail.wwpdb.org

A user guide is available at

<https://www.wwpdb.org/validation/2017/XrayValidationReportHelp>

with specific help available everywhere you see the ⓘ symbol.

The types of validation reports are described at

<http://www.wwpdb.org/validation/2017/FAQs#types>.

The following versions of software and data (see [references ⓘ](#)) were used in the production of this report:

MolProbity : 4.02b-467
Mogul : 1.8.5 (274361), CSD as541be (2020)
Xtrriage (Phenix) : 1.13
EDS : 2.35.1
buster-report : 1.1.7 (2018)
Percentile statistics : 20191225.v01 (using entries in the PDB archive December 25th 2019)
Refmac : 5.8.0158
CCP4 : 7.0.044 (Gargrove)
Ideal geometry (proteins) : Engh & Huber (2001)
Ideal geometry (DNA, RNA) : Parkinson et al. (1996)
Validation Pipeline (wwPDB-VP) : 2.35.1

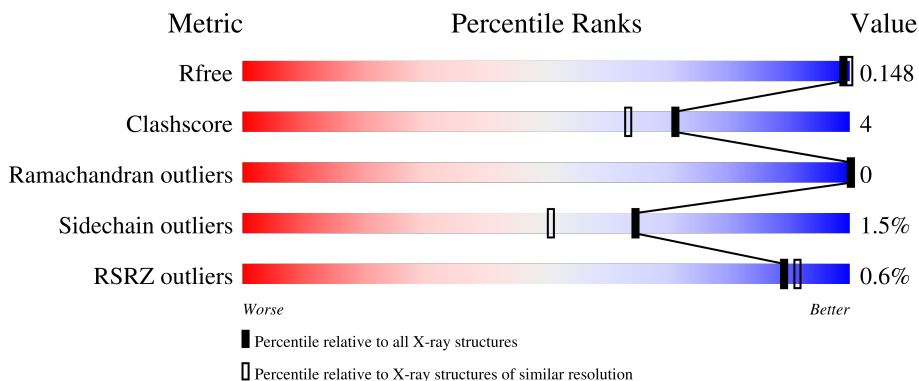
1 Overall quality at a glance

The following experimental techniques were used to determine the structure:

X-RAY DIFFRACTION

The reported resolution of this entry is 1.70 Å.

Percentile scores (ranging between 0-100) for global validation metrics of the entry are shown in the following graphic. The table shows the number of entries on which the scores are based.



Metric	Whole archive (#Entries)	Similar resolution (#Entries, resolution range(Å))
R_{free}	130704	4298 (1.70-1.70)
Clashscore	141614	4695 (1.70-1.70)
Ramachandran outliers	138981	4610 (1.70-1.70)
Sidechain outliers	138945	4610 (1.70-1.70)
RSRZ outliers	127900	4222 (1.70-1.70)

The table below summarises the geometric issues observed across the polymeric chains and their fit to the electron density. The red, orange, yellow and green segments of the lower bar indicate the fraction of residues that contain outliers for ≥ 3 , 2, 1 and 0 types of geometric quality criteria respectively. A grey segment represents the fraction of residues that are not modelled. The numeric value for each fraction is indicated below the corresponding segment, with a dot representing fractions $\leq 5\%$. The upper red bar (where present) indicates the fraction of residues that have poor fit to the electron density. The numeric value is given above the bar.

Mol	Chain	Length	Quality of chain
1	A	382	 88% 6% 5%
1	B	382	 86% 8% 5%
1	C	382	 87% 7% 5%
1	D	382	 84% 10% 5%

2 Entry composition i

There are 6 unique types of molecules in this entry. The entry contains 13489 atoms, of which 0 are hydrogens and 0 are deuteriums.

In the tables below, the ZeroOcc column contains the number of atoms modelled with zero occupancy, the AltConf column contains the number of residues with at least one atom in alternate conformation and the Trace column contains the number of residues modelled with at most 2 atoms.

- Molecule 1 is a protein called Putative aminotransferase.

Mol	Chain	Residues	Atoms					ZeroOcc	AltConf	Trace
			Total	C	N	O	S			
1	A	361	2938	1891	495	537	15	0	3	0
1	B	362	2938	1890	498	536	14	0	1	0
1	C	361	2945	1894	499	537	15	0	3	0
1	D	361	2939	1891	496	537	15	0	3	0

There are 92 discrepancies between the modelled and reference sequences:

Chain	Residue	Modelled	Actual	Comment	Reference
A	-21	MET	-	initiating methionine	UNP Q9ALS9
A	-20	GLY	-	expression tag	UNP Q9ALS9
A	-19	SER	-	expression tag	UNP Q9ALS9
A	-18	SER	-	expression tag	UNP Q9ALS9
A	-17	HIS	-	expression tag	UNP Q9ALS9
A	-16	HIS	-	expression tag	UNP Q9ALS9
A	-15	HIS	-	expression tag	UNP Q9ALS9
A	-14	HIS	-	expression tag	UNP Q9ALS9
A	-13	HIS	-	expression tag	UNP Q9ALS9
A	-12	HIS	-	expression tag	UNP Q9ALS9
A	-11	SER	-	expression tag	UNP Q9ALS9
A	-10	SER	-	expression tag	UNP Q9ALS9
A	-9	ARG	-	expression tag	UNP Q9ALS9
A	-8	ASN	-	expression tag	UNP Q9ALS9
A	-7	LEU	-	expression tag	UNP Q9ALS9
A	-6	TYR	-	expression tag	UNP Q9ALS9
A	-5	PHE	-	expression tag	UNP Q9ALS9
A	-4	GLN	-	expression tag	UNP Q9ALS9
A	-3	GLY	-	expression tag	UNP Q9ALS9
A	-2	GLY	-	expression tag	UNP Q9ALS9
A	-1	GLY	-	expression tag	UNP Q9ALS9

Continued on next page...

Continued from previous page...

Chain	Residue	Modelled	Actual	Comment	Reference
A	0	HIS	-	expression tag	UNP Q9ALS9
A	184	ALA	LYS	engineered mutation	UNP Q9ALS9
B	-21	MET	-	initiating methionine	UNP Q9ALS9
B	-20	GLY	-	expression tag	UNP Q9ALS9
B	-19	SER	-	expression tag	UNP Q9ALS9
B	-18	SER	-	expression tag	UNP Q9ALS9
B	-17	HIS	-	expression tag	UNP Q9ALS9
B	-16	HIS	-	expression tag	UNP Q9ALS9
B	-15	HIS	-	expression tag	UNP Q9ALS9
B	-14	HIS	-	expression tag	UNP Q9ALS9
B	-13	HIS	-	expression tag	UNP Q9ALS9
B	-12	HIS	-	expression tag	UNP Q9ALS9
B	-11	SER	-	expression tag	UNP Q9ALS9
B	-10	SER	-	expression tag	UNP Q9ALS9
B	-9	ARG	-	expression tag	UNP Q9ALS9
B	-8	ASN	-	expression tag	UNP Q9ALS9
B	-7	LEU	-	expression tag	UNP Q9ALS9
B	-6	TYR	-	expression tag	UNP Q9ALS9
B	-5	PHE	-	expression tag	UNP Q9ALS9
B	-4	GLN	-	expression tag	UNP Q9ALS9
B	-3	GLY	-	expression tag	UNP Q9ALS9
B	-2	GLY	-	expression tag	UNP Q9ALS9
B	-1	GLY	-	expression tag	UNP Q9ALS9
B	0	HIS	-	expression tag	UNP Q9ALS9
B	184	ALA	LYS	engineered mutation	UNP Q9ALS9
C	-21	MET	-	initiating methionine	UNP Q9ALS9
C	-20	GLY	-	expression tag	UNP Q9ALS9
C	-19	SER	-	expression tag	UNP Q9ALS9
C	-18	SER	-	expression tag	UNP Q9ALS9
C	-17	HIS	-	expression tag	UNP Q9ALS9
C	-16	HIS	-	expression tag	UNP Q9ALS9
C	-15	HIS	-	expression tag	UNP Q9ALS9
C	-14	HIS	-	expression tag	UNP Q9ALS9
C	-13	HIS	-	expression tag	UNP Q9ALS9
C	-12	HIS	-	expression tag	UNP Q9ALS9
C	-11	SER	-	expression tag	UNP Q9ALS9
C	-10	SER	-	expression tag	UNP Q9ALS9
C	-9	ARG	-	expression tag	UNP Q9ALS9
C	-8	ASN	-	expression tag	UNP Q9ALS9
C	-7	LEU	-	expression tag	UNP Q9ALS9
C	-6	TYR	-	expression tag	UNP Q9ALS9
C	-5	PHE	-	expression tag	UNP Q9ALS9

Continued on next page...

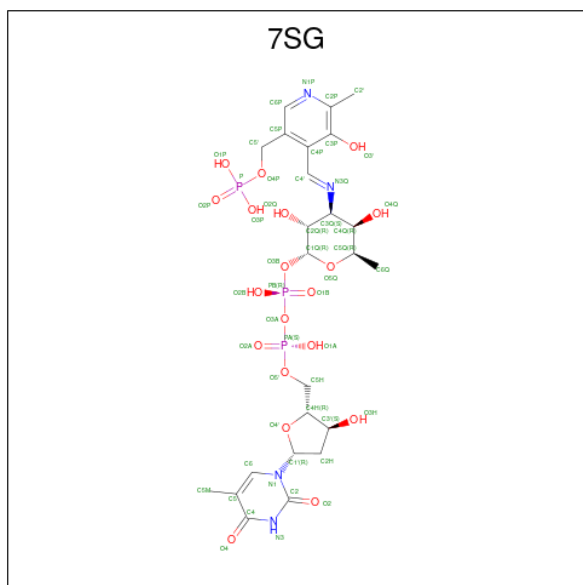
Continued from previous page...

Chain	Residue	Modelled	Actual	Comment	Reference
C	-4	GLN	-	expression tag	UNP Q9ALS9
C	-3	GLY	-	expression tag	UNP Q9ALS9
C	-2	GLY	-	expression tag	UNP Q9ALS9
C	-1	GLY	-	expression tag	UNP Q9ALS9
C	0	HIS	-	expression tag	UNP Q9ALS9
C	184	ALA	LYS	engineered mutation	UNP Q9ALS9
D	-21	MET	-	initiating methionine	UNP Q9ALS9
D	-20	GLY	-	expression tag	UNP Q9ALS9
D	-19	SER	-	expression tag	UNP Q9ALS9
D	-18	SER	-	expression tag	UNP Q9ALS9
D	-17	HIS	-	expression tag	UNP Q9ALS9
D	-16	HIS	-	expression tag	UNP Q9ALS9
D	-15	HIS	-	expression tag	UNP Q9ALS9
D	-14	HIS	-	expression tag	UNP Q9ALS9
D	-13	HIS	-	expression tag	UNP Q9ALS9
D	-12	HIS	-	expression tag	UNP Q9ALS9
D	-11	SER	-	expression tag	UNP Q9ALS9
D	-10	SER	-	expression tag	UNP Q9ALS9
D	-9	ARG	-	expression tag	UNP Q9ALS9
D	-8	ASN	-	expression tag	UNP Q9ALS9
D	-7	LEU	-	expression tag	UNP Q9ALS9
D	-6	TYR	-	expression tag	UNP Q9ALS9
D	-5	PHE	-	expression tag	UNP Q9ALS9
D	-4	GLN	-	expression tag	UNP Q9ALS9
D	-3	GLY	-	expression tag	UNP Q9ALS9
D	-2	GLY	-	expression tag	UNP Q9ALS9
D	-1	GLY	-	expression tag	UNP Q9ALS9
D	0	HIS	-	expression tag	UNP Q9ALS9
D	184	ALA	LYS	engineered mutation	UNP Q9ALS9

- Molecule 2 is SODIUM ION (three-letter code: NA) (formula: Na).

Mol	Chain	Residues	Atoms	ZeroOcc	AltConf
2	A	1	Total Na 1 1	0	0
2	C	1	Total Na 1 1	0	0

- Molecule 3 is (2R,3R,4S,5R,6R)-3,5-dihydroxy-4-[(E)-({3-hydroxy-2-methyl-5-[(phosphonooxy)methyl]pyridin-4-yl}methylidene)amino]-6-methyltetrahydro-2H-pyran-2-yl [(2R,3S,5R)-3-hydroxy-5-(5-methyl-2,4-dioxo-3,4-dihydropyrimidin-1(2H)-yl)tetrahydrofuran-2-yl]methyl dihydrogen diphosphate (non-preferred name) (three-letter code: 7SG) (formula: C₂₄H₃₅N₄O₁₉P₃).



Mol	Chain	Residues	Atoms					ZeroOcc	AltConf	
			Total	C	N	O	P			
3	A	1	Total	50	24	4	19	3	0	0
3	B	1	Total	50	24	4	19	3	0	0
3	C	1	Total	50	24	4	19	3	0	0
3	D	1	Total	50	24	4	19	3	0	0

- Molecule 4 is 1,2-ETHANEDIOL (three-letter code: EDO) (formula: $C_2H_6O_2$).



Mol	Chain	Residues	Atoms	ZeroOcc	AltConf
4	A	1	Total C O 4 2 2	0	0
4	A	1	Total C O 4 2 2	0	0
4	A	1	Total C O 4 2 2	0	0
4	B	1	Total C O 4 2 2	0	0
4	B	1	Total C O 4 2 2	0	0
4	C	1	Total C O 4 2 2	0	0
4	D	1	Total C O 4 2 2	0	0
4	D	1	Total C O 4 2 2	0	0

- Molecule 5 is CHLORIDE ION (three-letter code: CL) (formula: Cl).

Mol	Chain	Residues	Atoms	ZeroOcc	AltConf
5	A	1	Total Cl 1 1	0	0

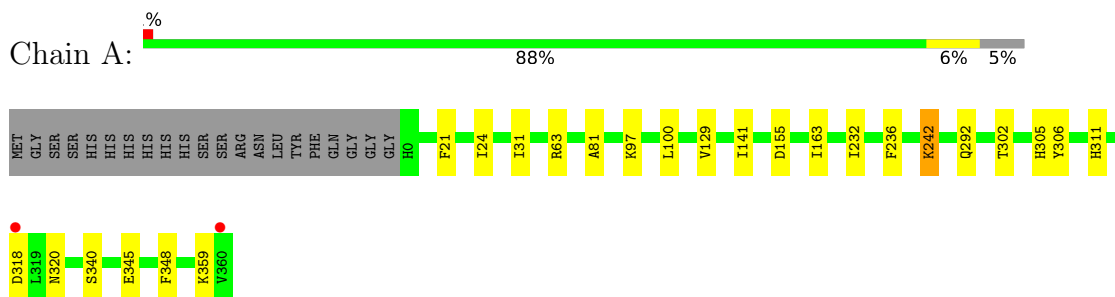
- Molecule 6 is water.

Mol	Chain	Residues	Atoms	ZeroOcc	AltConf
6	A	412	Total O 413 413	0	1
6	B	368	Total O 368 368	0	0
6	C	375	Total O 375 375	0	0
6	D	338	Total O 338 338	0	0

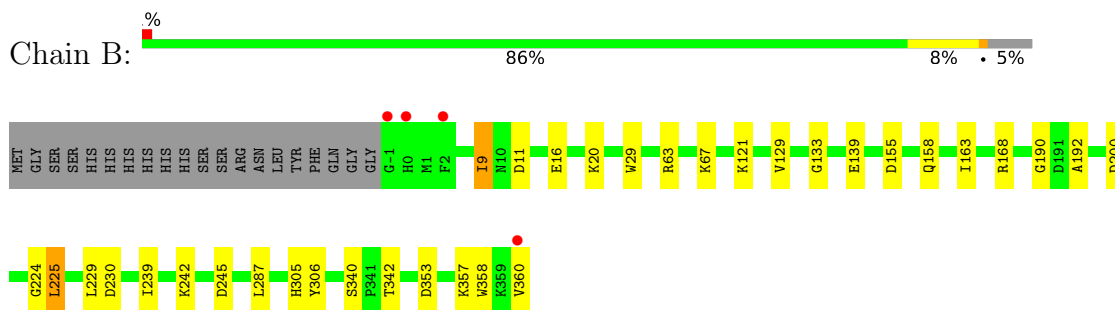
3 Residue-property plots [i](#)

These plots are drawn for all protein, RNA, DNA and oligosaccharide chains in the entry. The first graphic for a chain summarises the proportions of the various outlier classes displayed in the second graphic. The second graphic shows the sequence view annotated by issues in geometry and electron density. Residues are color-coded according to the number of geometric quality criteria for which they contain at least one outlier: green = 0, yellow = 1, orange = 2 and red = 3 or more. A red dot above a residue indicates a poor fit to the electron density ($RSRZ > 2$). Stretches of 2 or more consecutive residues without any outlier are shown as a green connector. Residues present in the sample, but not in the model, are shown in grey.

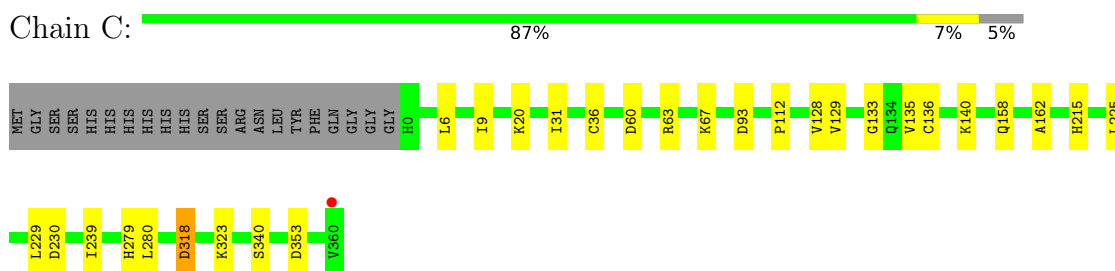
- Molecule 1: Putative aminotransferase



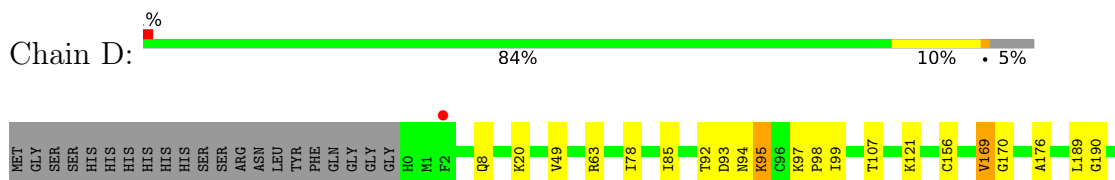
- Molecule 1: Putative aminotransferase



- Molecule 1: Putative aminotransferase



- Molecule 1: Putative aminotransferase





4 Data and refinement statistics i

Property	Value	Source
Space group	P 1 21 1	Depositor
Cell constants a, b, c, α , β , γ	109.06Å 56.80Å 124.31Å 90.00° 90.02° 90.00°	Depositor
Resolution (Å)	28.53 – 1.70 28.53 – 1.70	Depositor EDS
% Data completeness (in resolution range)	96.3 (28.53-1.70) 98.9 (28.53-1.70)	Depositor EDS
R_{merge}	0.05	Depositor
R_{sym}	0.05	Depositor
$\langle I/\sigma(I) \rangle$ ¹	3.61 (at 1.71Å)	Xtriage
Refinement program	REFMAC 5.8.0124	Depositor
R, R_{free}	0.105 , 0.146 0.108 , 0.148	Depositor DCC
R_{free} test set	8351 reflections (5.06%)	wwPDB-VP
Wilson B-factor (Å ²)	17.0	Xtriage
Anisotropy	0.110	Xtriage
Bulk solvent k_{sol} (e/Å ³), B_{sol} (Å ²)	0.36 , 46.5	EDS
L-test for twinning ²	$\langle L \rangle = 0.49$, $\langle L^2 \rangle = 0.32$	Xtriage
Estimated twinning fraction	0.020 for h,-k,-l	Xtriage
Reported twinning fraction	0.493 for H, K, L 0.507 for h,-k,-l	Depositor
Outliers	0 of 165117 reflections	Xtriage
F_o, F_c correlation	0.98	EDS
Total number of atoms	13489	wwPDB-VP
Average B, all atoms (Å ²)	20.0	wwPDB-VP

Xtriage's analysis on translational NCS is as follows: *The largest off-origin peak in the Patterson function is 7.57% of the height of the origin peak. No significant pseudotranslation is detected.*

¹Intensities estimated from amplitudes.

²Theoretical values of $\langle |L| \rangle$, $\langle L^2 \rangle$ for acentric reflections are 0.5, 0.333 respectively for untwinned datasets, and 0.375, 0.2 for perfectly twinned datasets.

5 Model quality [i](#)

5.1 Standard geometry [i](#)

Bond lengths and bond angles in the following residue types are not validated in this section: CL, 7SG, EDO, NA

The Z score for a bond length (or angle) is the number of standard deviations the observed value is removed from the expected value. A bond length (or angle) with $|Z| > 5$ is considered an outlier worth inspection. RMSZ is the root-mean-square of all Z scores of the bond lengths (or angles).

Mol	Chain	Bond lengths		Bond angles	
		RMSZ	# Z >5	RMSZ	# Z >5
1	A	0.48	0/3009	0.83	0/4063
1	B	0.47	0/3004	0.85	6/4056 (0.1%)
1	C	0.48	0/3014	0.86	2/4070 (0.0%)
1	D	0.47	0/3007	0.83	2/4061 (0.0%)
All	All	0.47	0/12034	0.84	10/16250 (0.1%)

There are no bond length outliers.

The worst 5 of 10 bond angle outliers are listed below:

Mol	Chain	Res	Type	Atoms	Z	Observed(°)	Ideal(°)
1	B	230	ASP	CB-CG-OD1	7.48	125.03	118.30
1	C	230	ASP	CB-CG-OD1	7.15	124.73	118.30
1	B	200	ASP	CB-CG-OD1	6.85	124.47	118.30
1	B	200	ASP	CB-CG-OD2	-6.56	112.40	118.30
1	B	245	ASP	CB-CG-OD1	6.14	123.83	118.30

There are no chirality outliers.

There are no planarity outliers.

5.2 Too-close contacts [i](#)

In the following table, the Non-H and H(model) columns list the number of non-hydrogen atoms and hydrogen atoms in the chain respectively. The H(added) column lists the number of hydrogen atoms added and optimized by MolProbity. The Clashes column lists the number of clashes within the asymmetric unit, whereas Symm-Clashes lists symmetry-related clashes.

Mol	Chain	Non-H	H(model)	H(added)	Clashes	Symm-Clashes
1	A	2938	0	2967	19	0
1	B	2938	0	2964	22	0

Continued on next page...

Continued from previous page...

Mol	Chain	Non-H	H(model)	H(added)	Clashes	Symm-Clashes
1	C	2945	0	2971	17	0
1	D	2939	0	2967	25	0
2	A	1	0	0	0	0
2	C	1	0	0	0	0
3	A	50	0	0	1	0
3	B	50	0	0	0	0
3	C	50	0	0	1	0
3	D	50	0	0	0	0
4	A	12	0	18	1	0
4	B	8	0	12	0	0
4	C	4	0	6	0	0
4	D	8	0	12	1	0
5	A	1	0	0	0	0
6	A	413	0	0	5	0
6	B	368	0	0	4	0
6	C	375	0	0	2	0
6	D	338	0	0	4	0
All	All	13489	0	11917	84	0

The all-atom clashscore is defined as the number of clashes found per 1000 atoms (including hydrogen atoms). The all-atom clashscore for this structure is 4.

The worst 5 of 84 close contacts within the same asymmetric unit are listed below, sorted by their clash magnitude.

Atom-1	Atom-2	Interatomic distance (Å)	Clash overlap (Å)
1:D:63:ARG:HD2	1:D:93:ASP:OD2	1.45	1.14
1:C:63:ARG:HD2	1:C:93:ASP:OD2	1.62	0.99
1:A:24:ILE:HD13	1:A:232:ILE:HD13	1.48	0.95
1:A:24:ILE:CD1	1:A:232:ILE:HD13	2.00	0.92
1:C:140:LYS:HE3	6:C:629:HOH:O	1.75	0.85

There are no symmetry-related clashes.

5.3 Torsion angles [i](#)

5.3.1 Protein backbone [i](#)

In the following table, the Percentiles column shows the percent Ramachandran outliers of the chain as a percentile score with respect to all X-ray entries followed by that with respect to entries of similar resolution.

The Analysed column shows the number of residues for which the backbone conformation was analysed, and the total number of residues.

Mol	Chain	Analysed	Favoured	Allowed	Outliers	Percentiles	
1	A	362/382 (95%)	353 (98%)	9 (2%)	0	100	100
1	B	361/382 (94%)	350 (97%)	11 (3%)	0	100	100
1	C	362/382 (95%)	346 (96%)	16 (4%)	0	100	100
1	D	362/382 (95%)	351 (97%)	11 (3%)	0	100	100
All	All	1447/1528 (95%)	1400 (97%)	47 (3%)	0	100	100

There are no Ramachandran outliers to report.

5.3.2 Protein sidechains [i](#)

In the following table, the Percentiles column shows the percent sidechain outliers of the chain as a percentile score with respect to all X-ray entries followed by that with respect to entries of similar resolution.

The Analysed column shows the number of residues for which the sidechain conformation was analysed, and the total number of residues.

Mol	Chain	Analysed	Rotameric	Outliers	Percentiles	
1	A	323/338 (96%)	318 (98%)	5 (2%)	65	51
1	B	322/338 (95%)	317 (98%)	5 (2%)	62	48
1	C	324/338 (96%)	319 (98%)	5 (2%)	65	51
1	D	323/338 (96%)	319 (99%)	4 (1%)	71	59
All	All	1292/1352 (96%)	1273 (98%)	19 (2%)	65	51

5 of 19 residues with a non-rotameric sidechain are listed below:

Mol	Chain	Res	Type
1	C	340	SER
1	D	169	VAL
1	D	340	SER
1	D	95	LYS
1	B	242	LYS

Sometimes sidechains can be flipped to improve hydrogen bonding and reduce clashes. 5 of 7 such sidechains are listed below:

Mol	Chain	Res	Type
1	C	201	ASN
1	C	256	ASN
1	C	297	ASN
1	C	260	GLN
1	B	260	GLN

5.3.3 RNA [i](#)

There are no RNA molecules in this entry.

5.4 Non-standard residues in protein, DNA, RNA chains [i](#)

There are no non-standard protein/DNA/RNA residues in this entry.

5.5 Carbohydrates [i](#)

There are no monosaccharides in this entry.

5.6 Ligand geometry [i](#)

Of 15 ligands modelled in this entry, 3 are monoatomic - leaving 12 for Mogul analysis.

In the following table, the Counts columns list the number of bonds (or angles) for which Mogul statistics could be retrieved, the number of bonds (or angles) that are observed in the model and the number of bonds (or angles) that are defined in the Chemical Component Dictionary. The Link column lists molecule types, if any, to which the group is linked. The Z score for a bond length (or angle) is the number of standard deviations the observed value is removed from the expected value. A bond length (or angle) with $|Z| > 2$ is considered an outlier worth inspection. RMSZ is the root-mean-square of all Z scores of the bond lengths (or angles).

Mol	Type	Chain	Res	Link	Bond lengths			Bond angles		
					Counts	RMSZ	$\# Z > 2$	Counts	RMSZ	$\# Z > 2$
4	EDO	A	404	-	3,3,3	0.46	0	2,2,2	0.34	0
3	7SG	B	401	-	50,53,53	1.73	6 (12%)	71,81,81	1.92	17 (23%)
4	EDO	B	403	-	3,3,3	0.64	0	2,2,2	0.63	0
4	EDO	C	403	-	3,3,3	0.57	0	2,2,2	0.34	0
3	7SG	A	402	-	50,53,53	1.68	6 (12%)	71,81,81	2.03	17 (23%)
4	EDO	D	403	-	3,3,3	0.50	0	2,2,2	0.41	0
4	EDO	D	402	-	3,3,3	0.50	0	2,2,2	0.10	0
4	EDO	B	402	-	3,3,3	0.63	0	2,2,2	0.17	0
4	EDO	A	405	-	3,3,3	0.41	0	2,2,2	0.39	0

Mol	Type	Chain	Res	Link	Bond lengths			Bond angles		
					Counts	RMSZ	# Z > 2	Counts	RMSZ	# Z > 2
3	7SG	C	402	-	50,53,53	1.81	8 (16%)	71,81,81	1.99	18 (25%)
4	EDO	A	403	-	3,3,3	0.54	0	2,2,2	0.18	0
3	7SG	D	401	-	50,53,53	1.61	6 (12%)	71,81,81	2.02	16 (22%)

In the following table, the Chirals column lists the number of chiral outliers, the number of chiral centers analysed, the number of these observed in the model and the number defined in the Chemical Component Dictionary. Similar counts are reported in the Torsion and Rings columns. '-' means no outliers of that kind were identified.

Mol	Type	Chain	Res	Link	Chirals	Torsions	Rings
4	EDO	A	404	-	-	0/1/1/1	-
3	7SG	B	401	-	-	2/32/64/64	0/4/4/4
4	EDO	B	403	-	-	1/1/1/1	-
4	EDO	C	403	-	-	1/1/1/1	-
3	7SG	A	402	-	-	3/32/64/64	0/4/4/4
4	EDO	D	403	-	-	0/1/1/1	-
4	EDO	D	402	-	-	0/1/1/1	-
4	EDO	B	402	-	-	1/1/1/1	-
4	EDO	A	405	-	-	0/1/1/1	-
3	7SG	C	402	-	-	4/32/64/64	0/4/4/4
4	EDO	A	403	-	-	0/1/1/1	-
3	7SG	D	401	-	-	6/32/64/64	0/4/4/4

The worst 5 of 26 bond length outliers are listed below:

Mol	Chain	Res	Type	Atoms	Z	Observed(Å)	Ideal(Å)
3	B	401	7SG	C3P-C2P	7.48	1.48	1.40
3	A	402	7SG	C3P-C2P	7.38	1.48	1.40
3	C	402	7SG	C3P-C2P	7.29	1.48	1.40
3	C	402	7SG	C4P-C5P	5.86	1.49	1.42
3	D	401	7SG	C4P-C3P	5.65	1.49	1.40

The worst 5 of 68 bond angle outliers are listed below:

Mol	Chain	Res	Type	Atoms	Z	Observed(°)	Ideal(°)
3	D	401	7SG	C3Q-N3Q-C4'	7.83	131.88	117.99
3	C	402	7SG	O4-C4-C5	-7.22	116.53	124.90
3	B	401	7SG	C3Q-N3Q-C4'	6.91	130.25	117.99
3	C	402	7SG	C3Q-N3Q-C4'	6.12	128.85	117.99
3	A	402	7SG	C3P-C4P-C5P	-6.11	113.57	118.26

There are no chirality outliers.

5 of 18 torsion outliers are listed below:

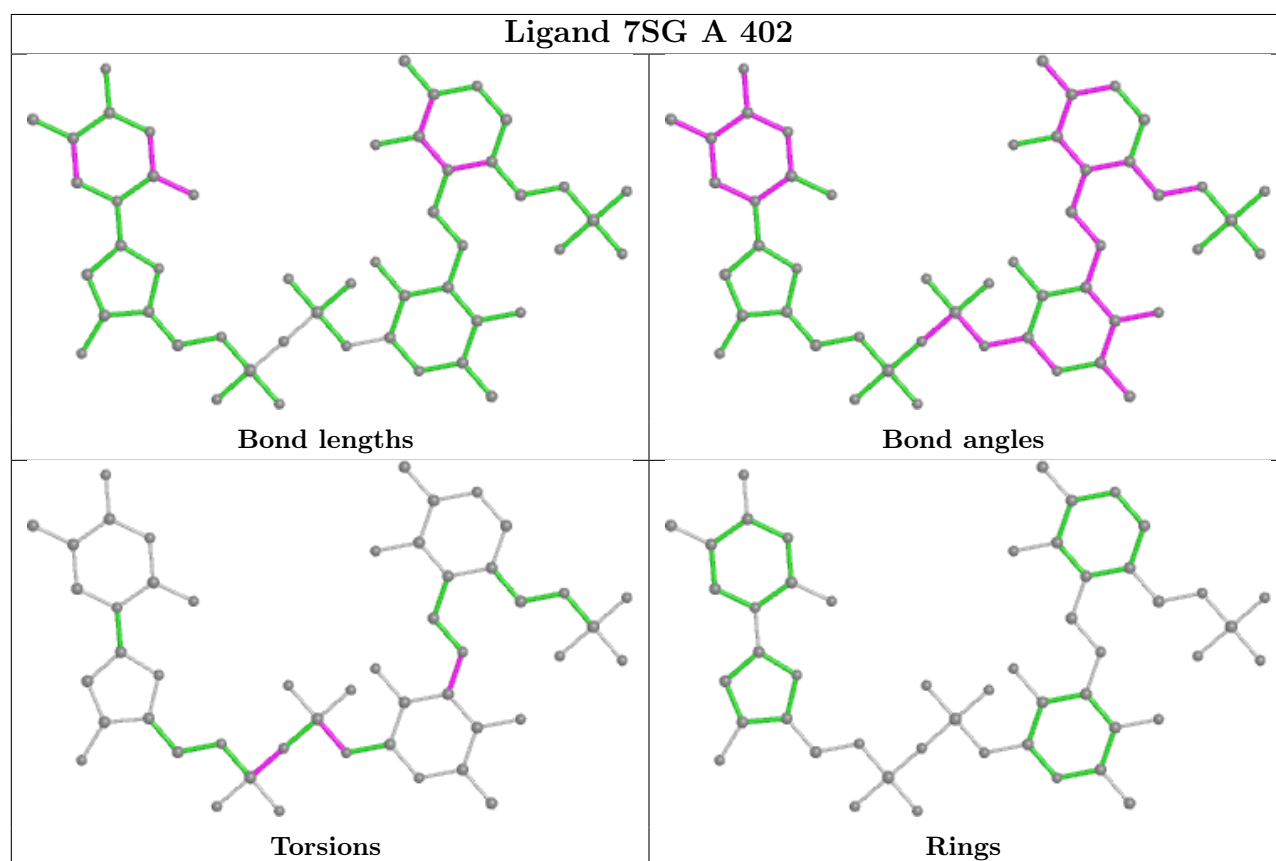
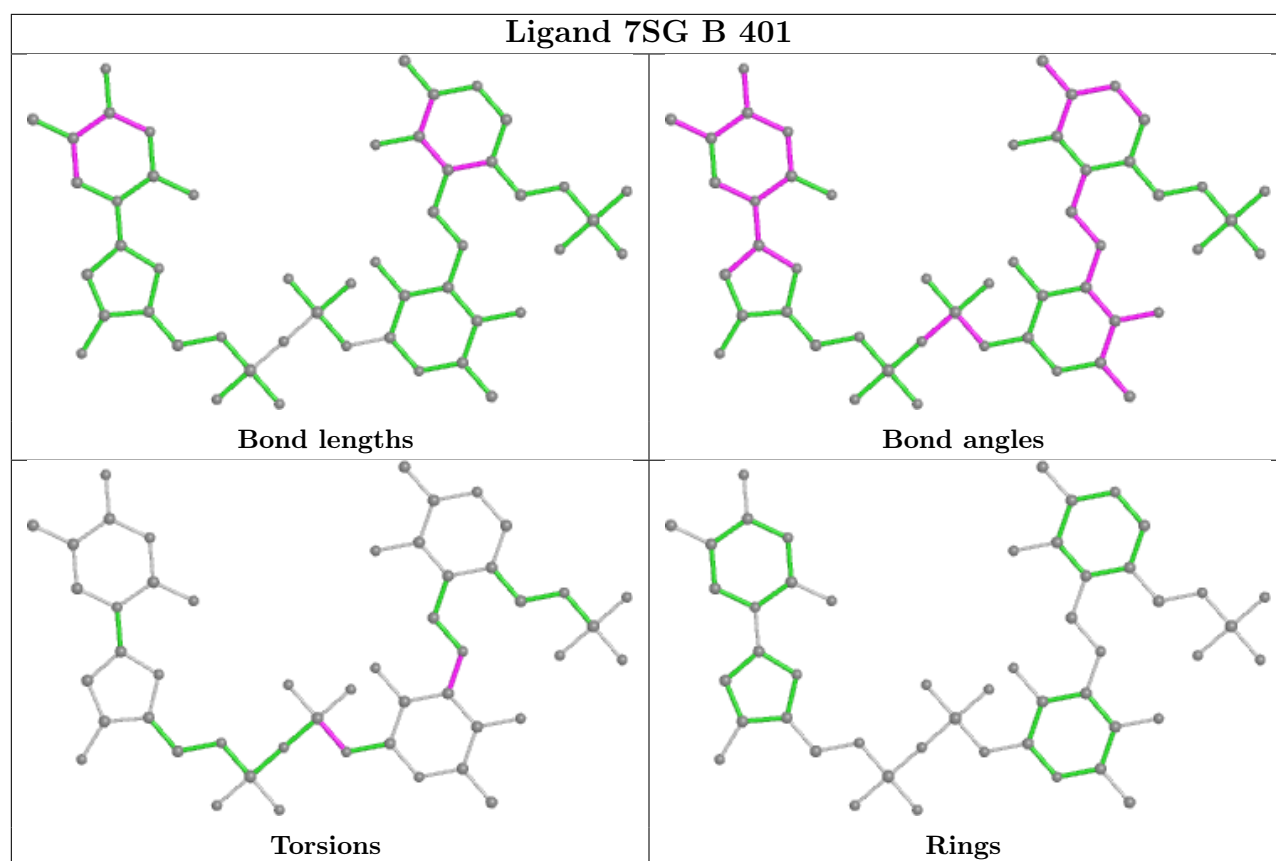
Mol	Chain	Res	Type	Atoms
3	A	402	7SG	C4Q-C3Q-N3Q-C4'
3	B	401	7SG	C4Q-C3Q-N3Q-C4'
3	C	402	7SG	C4Q-C3Q-N3Q-C4'
3	D	401	7SG	C4Q-C3Q-N3Q-C4'
3	D	401	7SG	C2Q-C1Q-O3B-PB

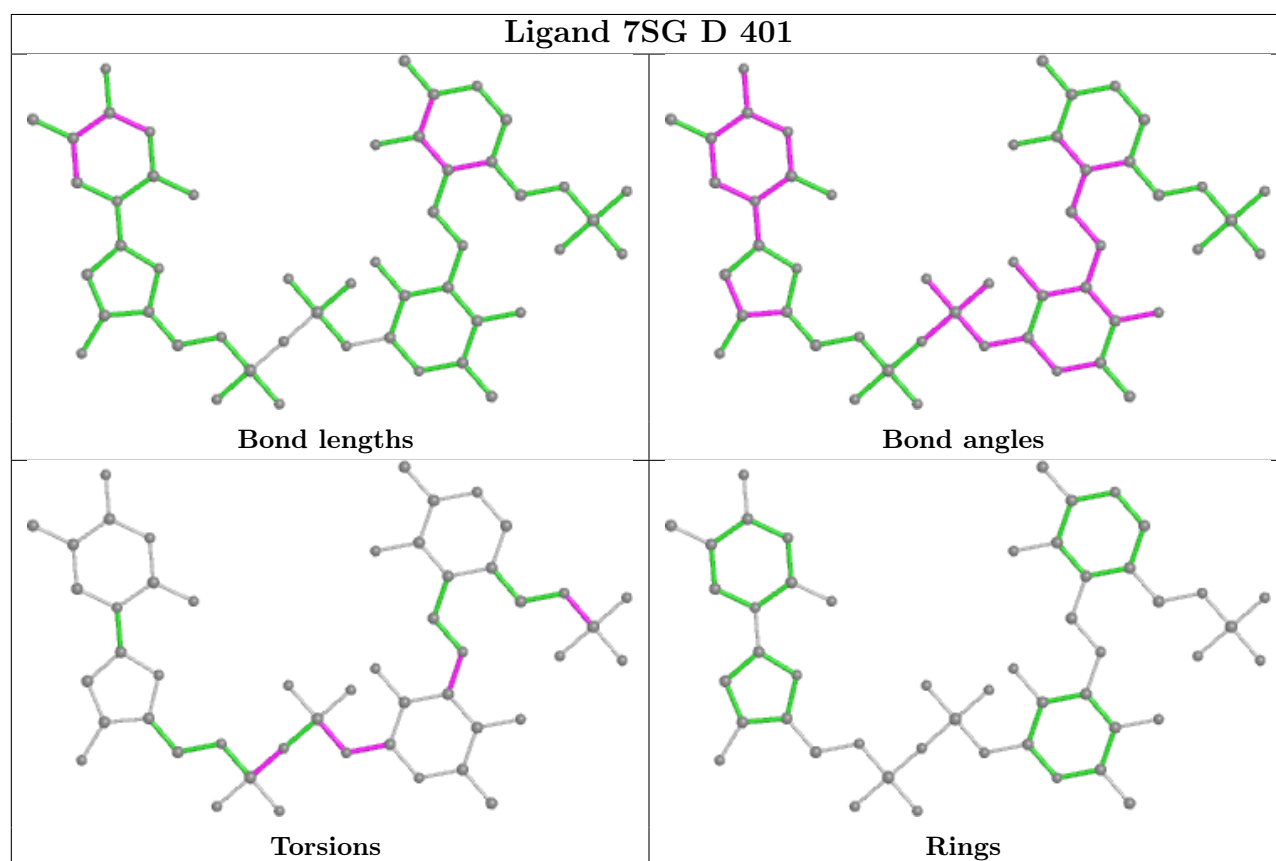
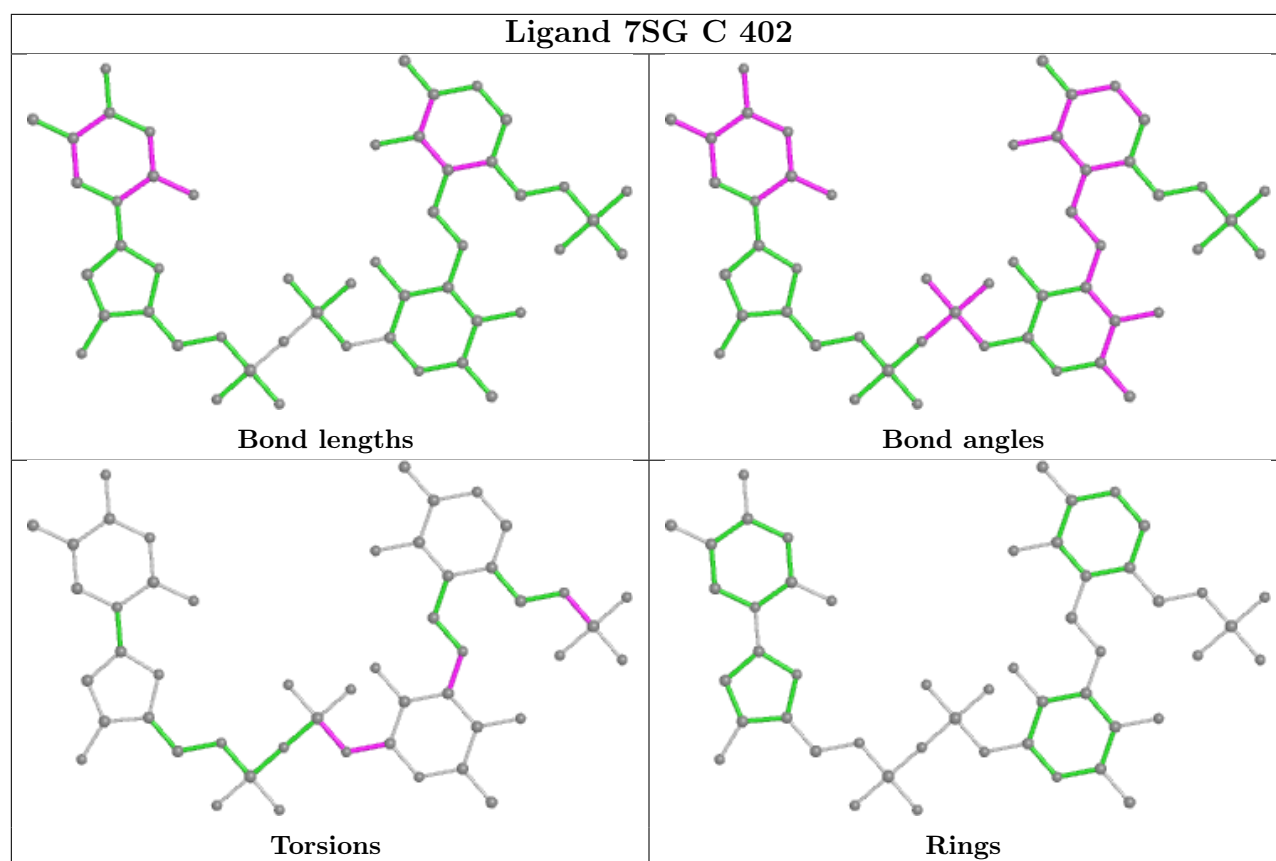
There are no ring outliers.

4 monomers are involved in 4 short contacts:

Mol	Chain	Res	Type	Clashes	Symm-Clashes
3	A	402	7SG	1	0
4	D	403	EDO	1	0
4	A	405	EDO	1	0
3	C	402	7SG	1	0

The following is a two-dimensional graphical depiction of Mogul quality analysis of bond lengths, bond angles, torsion angles, and ring geometry for all instances of the Ligand of Interest. In addition, ligands with molecular weight > 250 and outliers as shown on the validation Tables will also be included. For torsion angles, if less than 5% of the Mogul distribution of torsion angles is within 10 degrees of the torsion angle in question, then that torsion angle is considered an outlier. Any bond that is central to one or more torsion angles identified as an outlier by Mogul will be highlighted in the graph. For rings, the root-mean-square deviation (RMSD) between the ring in question and similar rings identified by Mogul is calculated over all ring torsion angles. If the average RMSD is greater than 60 degrees and the minimal RMSD between the ring in question and any Mogul-identified rings is also greater than 60 degrees, then that ring is considered an outlier. The outliers are highlighted in purple. The color gray indicates Mogul did not find sufficient equivalents in the CSD to analyse the geometry.





5.7 Other polymers [i](#)

There are no such residues in this entry.

5.8 Polymer linkage issues [i](#)

There are no chain breaks in this entry.

6 Fit of model and data [i](#)

6.1 Protein, DNA and RNA chains [i](#)

In the following table, the column labelled ‘#RSRZ> 2’ contains the number (and percentage) of RSRZ outliers, followed by percent RSRZ outliers for the chain as percentile scores relative to all X-ray entries and entries of similar resolution. The OWAB column contains the minimum, median, 95th percentile and maximum values of the occupancy-weighted average B-factor per residue. The column labelled ‘Q< 0.9’ lists the number of (and percentage) of residues with an average occupancy less than 0.9.

Mol	Chain	Analysed	<RSRZ>	#RSRZ>2	OWAB(Å ²)	Q<0.9
1	A	361/382 (94%)	-0.45	2 (0%) 89 91	10, 17, 29, 68	0
1	B	362/382 (94%)	-0.39	4 (1%) 80 83	11, 18, 34, 66	0
1	C	361/382 (94%)	-0.42	1 (0%) 94 94	10, 17, 31, 43	0
1	D	361/382 (94%)	-0.40	2 (0%) 89 91	10, 17, 32, 44	0
All	All	1445/1528 (94%)	-0.41	9 (0%) 89 91	10, 17, 32, 68	0

The worst 5 of 9 RSRZ outliers are listed below:

Mol	Chain	Res	Type	RSRZ
1	B	360	VAL	5.1
1	D	360	VAL	3.7
1	B	-1	GLY	3.2
1	C	360	VAL	2.6
1	B	2	PHE	2.5

6.2 Non-standard residues in protein, DNA, RNA chains [i](#)

There are no non-standard protein/DNA/RNA residues in this entry.

6.3 Carbohydrates [i](#)

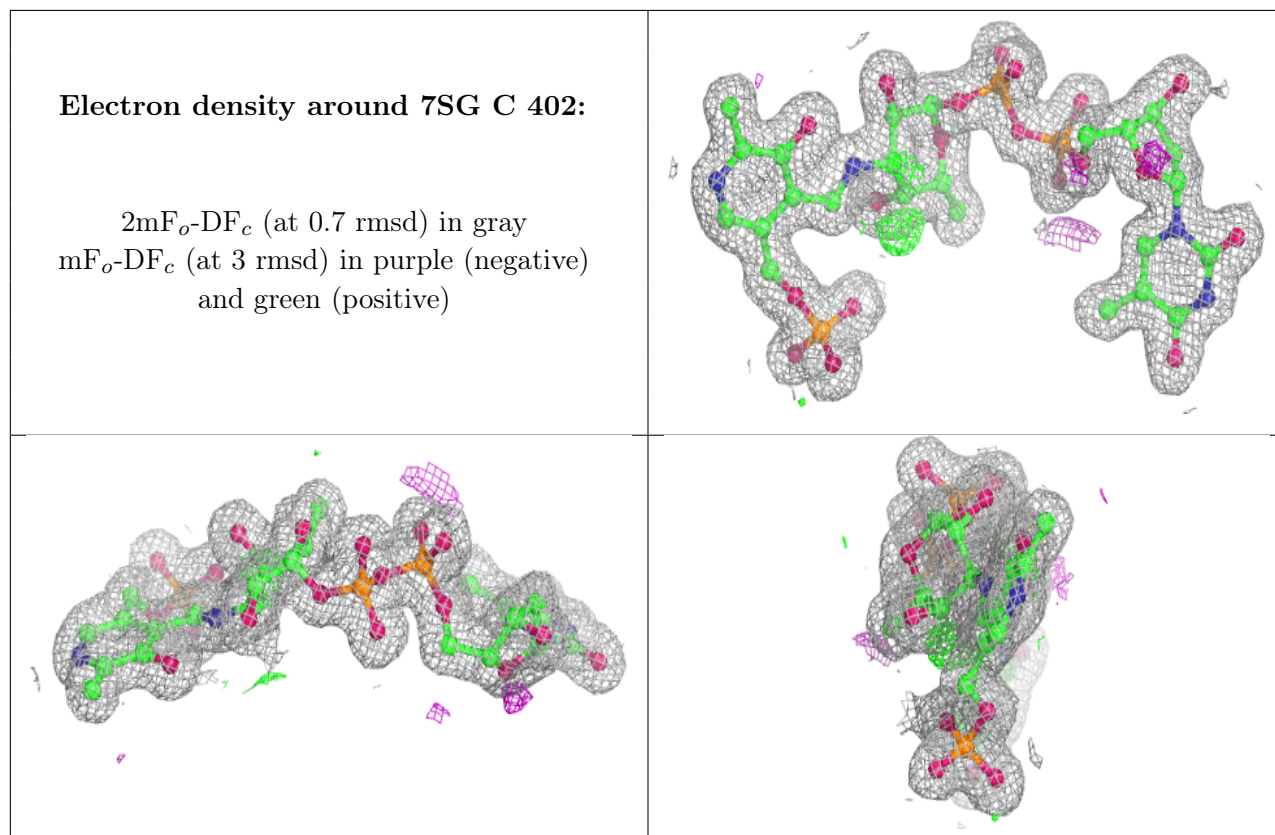
There are no monosaccharides in this entry.

6.4 Ligands [i](#)

In the following table, the Atoms column lists the number of modelled atoms in the group and the number defined in the chemical component dictionary. The B-factors column lists the minimum, median, 95th percentile and maximum values of B factors of atoms in the group. The column labelled ‘Q< 0.9’ lists the number of atoms with occupancy less than 0.9.

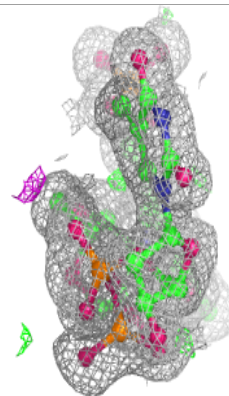
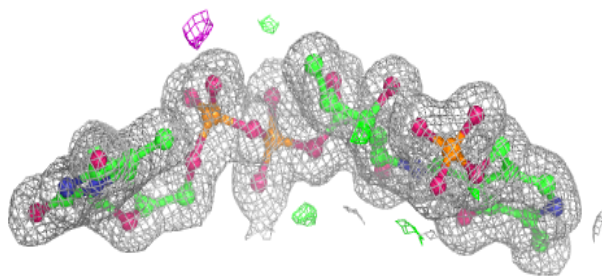
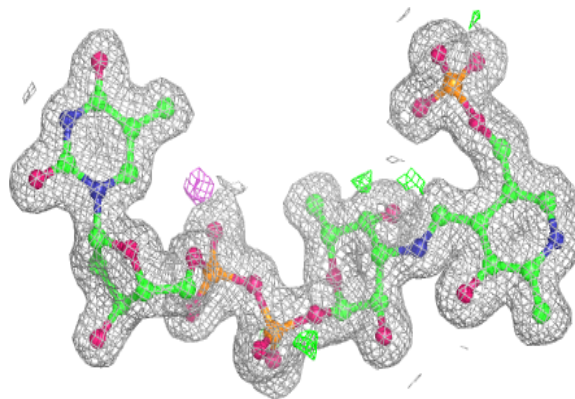
Mol	Type	Chain	Res	Atoms	RSCC	RSR	B-factors(\AA^2)	Q<0.9
4	EDO	B	402	4/4	0.90	0.09	31,33,34,35	0
4	EDO	B	403	4/4	0.94	0.12	19,23,25,28	0
4	EDO	A	405	4/4	0.96	0.08	25,29,31,37	0
4	EDO	D	403	4/4	0.96	0.10	17,17,18,20	0
3	7SG	C	402	50/50	0.97	0.08	11,15,19,27	0
3	7SG	D	401	50/50	0.97	0.07	10,17,22,28	0
4	EDO	C	403	4/4	0.97	0.08	21,23,26,37	0
4	EDO	D	402	4/4	0.97	0.08	17,21,26,28	0
3	7SG	B	401	50/50	0.97	0.07	12,17,22,30	0
3	7SG	A	402	50/50	0.98	0.07	10,14,19,23	0
4	EDO	A	403	4/4	0.98	0.06	19,20,21,21	0
2	NA	A	401	1/1	0.99	0.08	14,14,14,14	0
4	EDO	A	404	4/4	0.99	0.05	15,17,18,19	0
2	NA	C	401	1/1	1.00	0.07	11,11,11,11	0
5	CL	A	406	1/1	1.00	0.03	22,22,22,22	0

The following is a graphical depiction of the model fit to experimental electron density of all instances of the Ligand of Interest. In addition, ligands with molecular weight > 250 and outliers as shown on the geometry validation Tables will also be included. Each fit is shown from different orientation to approximate a three-dimensional view.

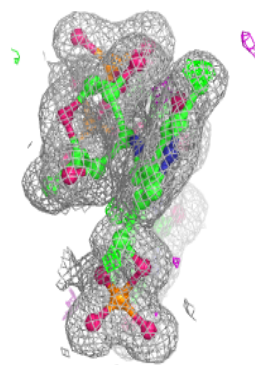
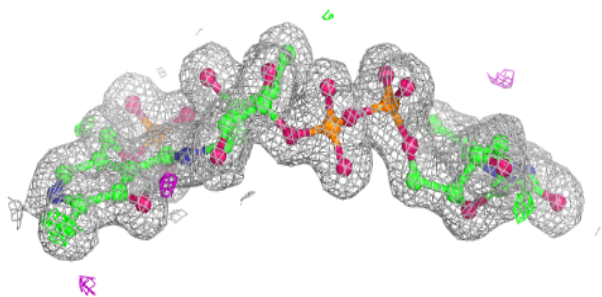
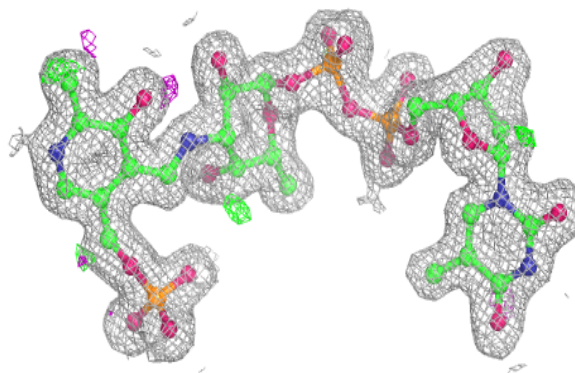


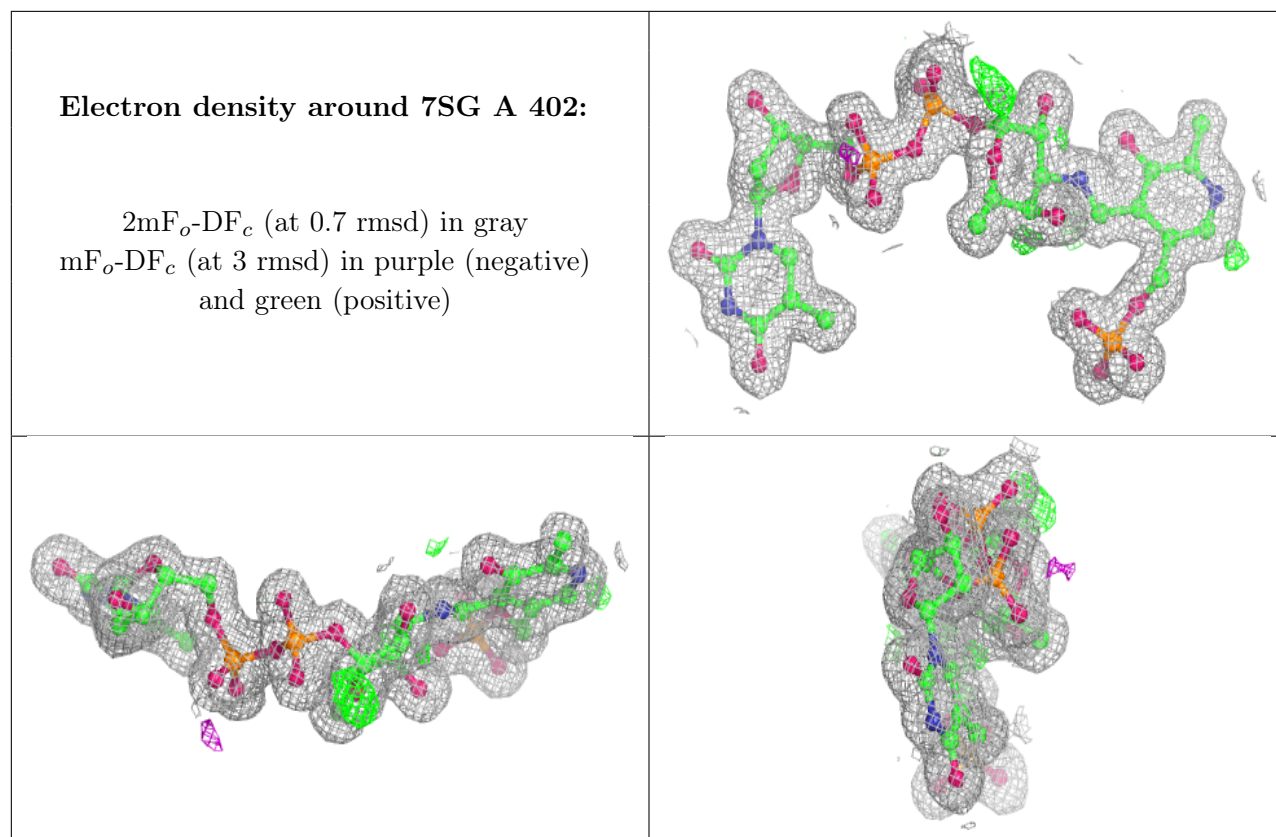
Electron density around 7SG D 401:

$2mF_o-DF_c$ (at 0.7 rmsd) in gray
 mF_o-DF_c (at 3 rmsd) in purple (negative)
and green (positive)

**Electron density around 7SG B 401:**

$2mF_o-DF_c$ (at 0.7 rmsd) in gray
 mF_o-DF_c (at 3 rmsd) in purple (negative)
and green (positive)





6.5 Other polymers [i](#)

There are no such residues in this entry.