



wwPDB EM Validation Summary Report ⓘ

Mar 2, 2024 – 08:25 AM EST

PDB ID : 5U4J
EMDB ID : EMD-8506
Title : Structural Basis of Co-translational Quality Control by ArfA and RF2 Bound to Ribosome
Authors : Zeng, F.; Chen, Y.; Remis, J.; Shekhar, M.; Phillips, J.C.; Tajkhorshid, E.; Jin, H.
Deposited on : 2016-12-04
Resolution : 3.70 Å(reported)

This is a wwPDB EM Validation Summary Report for a publicly released PDB entry.

We welcome your comments at validation@mail.wwpdb.org

A user guide is available at

<https://www.wwpdb.org/validation/2017/EMValidationReportHelp>

with specific help available everywhere you see the ⓘ symbol.

The types of validation reports are described at

<http://www.wwpdb.org/validation/2017/FAQs#types>.

The following versions of software and data (see [references ⓘ](#)) were used in the production of this report:

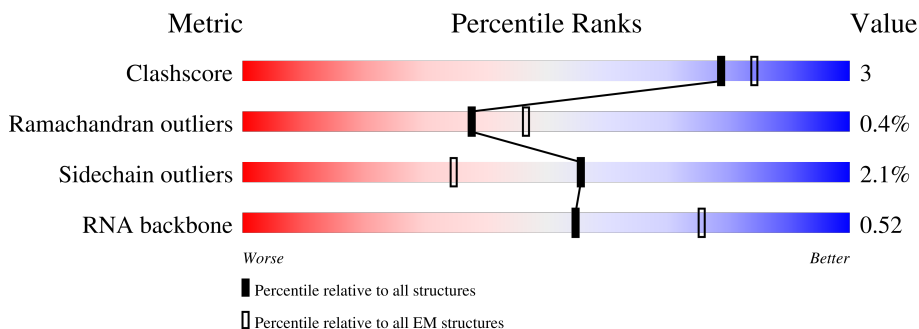
EMDB validation analysis : 0.0.1.dev70
Mogul : 1.8.5 (274361), CSD as541be (2020)
MolProbity : 4.02b-467
Percentile statistics : 20191225.v01 (using entries in the PDB archive December 25th 2019)
MapQ : 1.9.13
Ideal geometry (proteins) : Engh & Huber (2001)
Ideal geometry (DNA, RNA) : Parkinson et al. (1996)
Validation Pipeline (wwPDB-VP) : 2.36

1 Overall quality at a glance

The following experimental techniques were used to determine the structure:
ELECTRON MICROSCOPY

The reported resolution of this entry is 3.70 Å.

Percentile scores (ranging between 0-100) for global validation metrics of the entry are shown in the following graphic. The table shows the number of entries on which the scores are based.



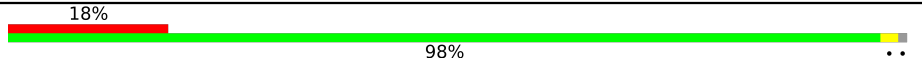


Metric	Whole archive (#Entries)	EM structures (#Entries)
Clashscore	158937	4297
Ramachandran outliers	154571	4023
Sidechain outliers	154315	3826
RNA backbone	4643	859

The table below summarises the geometric issues observed across the polymeric chains and their fit to the map. The red, orange, yellow and green segments of the bar indicate the fraction of residues that contain outliers for ≥ 3 , 2, 1 and 0 types of geometric quality criteria respectively. A grey segment represents the fraction of residues that are not modelled. The numeric value for each fraction is indicated below the corresponding segment, with a dot representing fractions $\leq 5\%$. The upper red bar (where present) indicates the fraction of residues that have poor fit to the EM map (all-atom inclusion $< 40\%$). The numeric value is given above the bar.

Mol	Chain	Length	Quality of chain
1	a	1533	
2	A	2904	
3	c	233	
4	d	206	
5	e	167	
6	z	18	
7	x	77	

Continued on next page...

Continued from previous page...

Mol	Chain	Length	Quality of chain
8	l	124	 <p>18% 98%</p>
9	v	383	 <p>21% 34% 66%</p>
10	w	57	 <p>25% 72% 11% 18%</p>

2 Entry composition

There are 10 unique types of molecules in this entry. The entry contains 11360 atoms, of which 0 are hydrogens and 0 are deuteriums.

In the tables below, the AltConf column contains the number of residues with at least one atom in alternate conformation and the Trace column contains the number of residues modelled with at most 2 atoms.

- Molecule 1 is a RNA chain called 16S rRNA.

Mol	Chain	Residues	Atoms					AltConf	Trace
			Total	C	N	O	P		
1	a	307	6591	2944	1198	2142	307	0	0

- Molecule 2 is a RNA chain called 23S rRNA.

Mol	Chain	Residues	Atoms					AltConf	Trace
			Total	C	N	O	P		
2	A	11	233	105	42	75	11	0	0

There is a discrepancy between the modelled and reference sequences:

Chain	Residue	Modelled	Actual	Comment	Reference
A	887	A	U	conflict	GB 42756

- Molecule 3 is a protein called 30S ribosomal protein S3.

Mol	Chain	Residues	Atoms				AltConf	Trace
			Total	C	N	O		
3	c	21	169	105	32	32	0	0

- Molecule 4 is a protein called 30S ribosomal protein S4.

Mol	Chain	Residues	Atoms					AltConf	Trace
			Total	C	N	O	S		
4	d	65	523	327	106	89	1	0	0

- Molecule 5 is a protein called 30S ribosomal protein S5.

Mol	Chain	Residues	Atoms					AltConf	Trace
			Total	C	N	O	S		
5	e	136	1001	625	190	182	4	0	0

- Molecule 6 is a RNA chain called mRNA.

Mol	Chain	Residues	Atoms					AltConf	Trace
6	z	6	Total	C	N	O	P	0	0
			131	59	27	39	6		

- Molecule 7 is a RNA chain called P-site tRNA fMet.

Mol	Chain	Residues	Atoms					AltConf	Trace
7	x	15	Total	C	N	O	P	0	0
			315	141	54	105	15		

- Molecule 8 is a protein called 30S ribosomal protein S12.

Mol	Chain	Residues	Atoms					AltConf	Trace
8	1	123	Total	C	N	O	S	0	0
			955	590	196	165	4		

- Molecule 9 is a protein called Peptide chain release factor 2.

Mol	Chain	Residues	Atoms					AltConf	Trace
9	v	132	Total	C	N	O	S	0	0
			1054	659	182	208	5		

There are 18 discrepancies between the modelled and reference sequences:

Chain	Residue	Modelled	Actual	Comment	Reference
v	-17	HIS	-	expression tag	UNP P07012
v	-16	HIS	-	expression tag	UNP P07012
v	-15	HIS	-	expression tag	UNP P07012
v	-14	HIS	-	expression tag	UNP P07012
v	-13	HIS	-	expression tag	UNP P07012
v	-12	HIS	-	expression tag	UNP P07012
v	-11	SER	-	expression tag	UNP P07012
v	-10	ALA	-	expression tag	UNP P07012
v	-9	ALA	-	expression tag	UNP P07012
v	-8	LEU	-	expression tag	UNP P07012
v	-7	GLU	-	expression tag	UNP P07012
v	-6	VAL	-	expression tag	UNP P07012
v	-5	LEU	-	expression tag	UNP P07012
v	-4	PHE	-	expression tag	UNP P07012
v	-3	GLN	-	expression tag	UNP P07012
v	-2	GLY	-	expression tag	UNP P07012
v	-1	PRO	-	expression tag	UNP P07012
v	0	GLY	-	expression tag	UNP P07012

- Molecule 10 is a protein called Alternative ribosome-rescue factor A.

Mol	Chain	Residues	Atoms					AltConf	Trace
			Total	C	N	O	S		
10	w	47	388	239	82	66	1	0	0

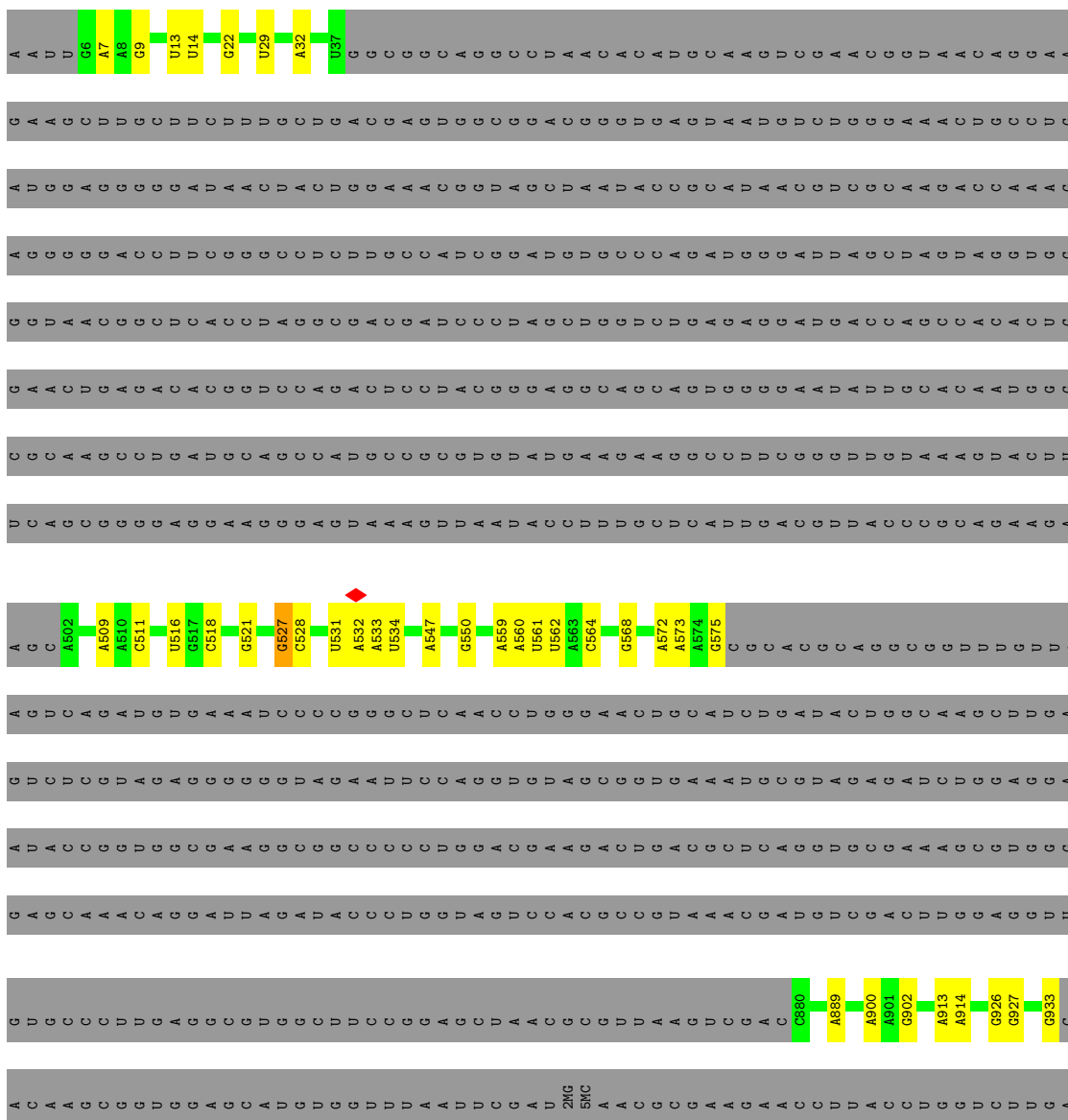
There are 2 discrepancies between the modelled and reference sequences:

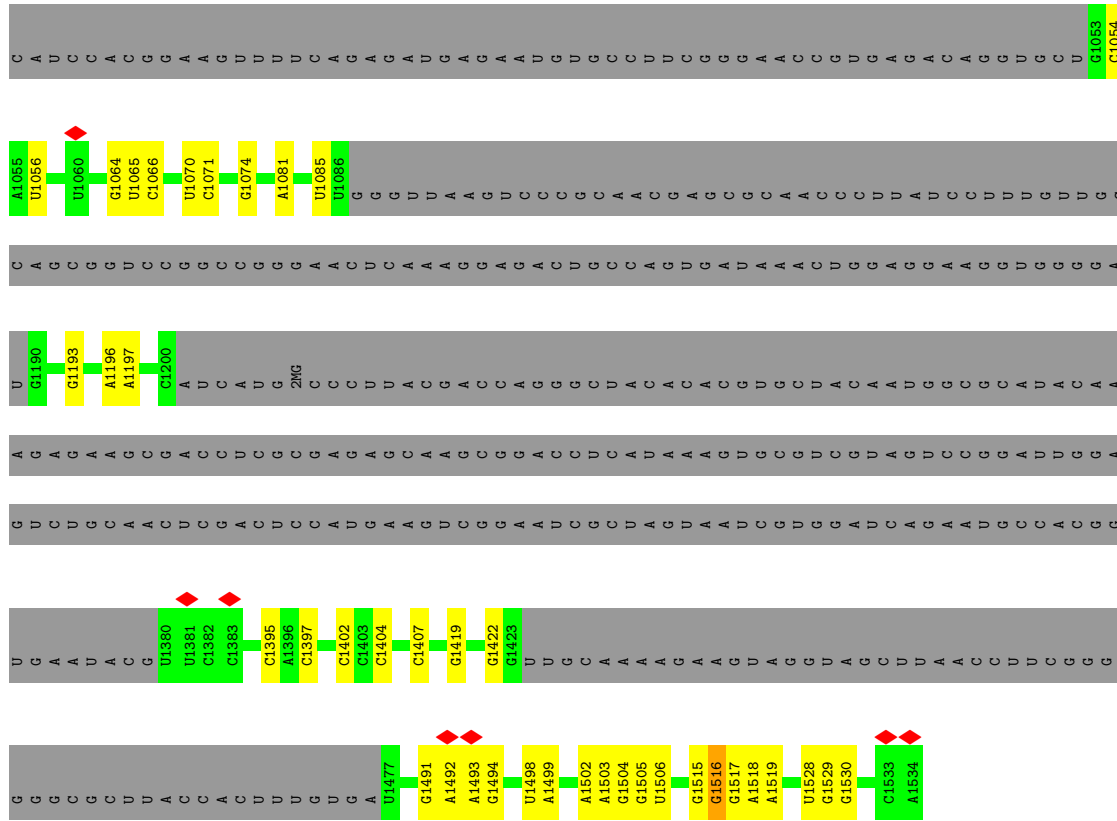
Chain	Residue	Modelled	Actual	Comment	Reference
w	-1	GLY	-	expression tag	UNP P36675
w	0	SER	-	expression tag	UNP P36675

3 Residue-property plots i

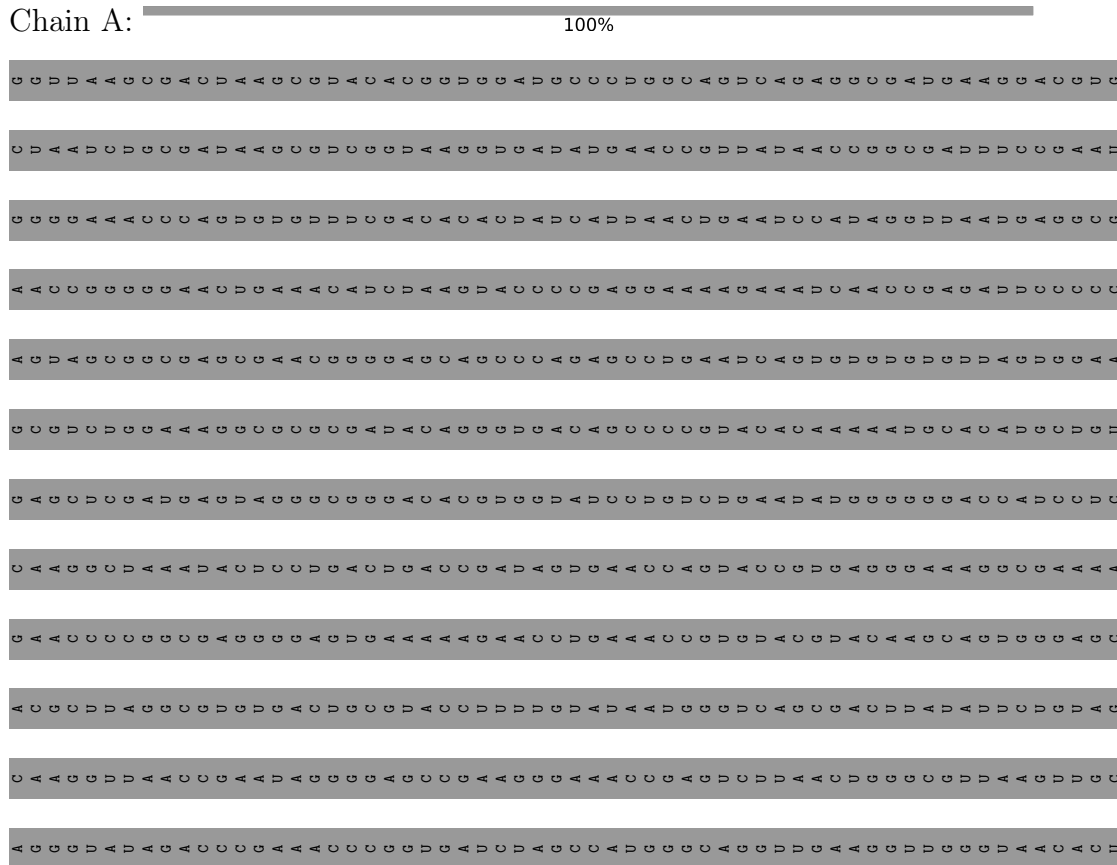
These plots are drawn for all protein, RNA, DNA and oligosaccharide chains in the entry. The first graphic for a chain summarises the proportions of the various outlier classes displayed in the second graphic. The second graphic shows the sequence view annotated by issues in geometry and atom inclusion in map density. Residues are color-coded according to the number of geometric quality criteria for which they contain at least one outlier: green = 0, yellow = 1, orange = 2 and red = 3 or more. A red diamond above a residue indicates a poor fit to the EM map for this residue (all-atom inclusion < 40%). Stretches of 2 or more consecutive residues without any outlier are shown as a green connector. Residues present in the sample, but not in the model, are shown in grey.

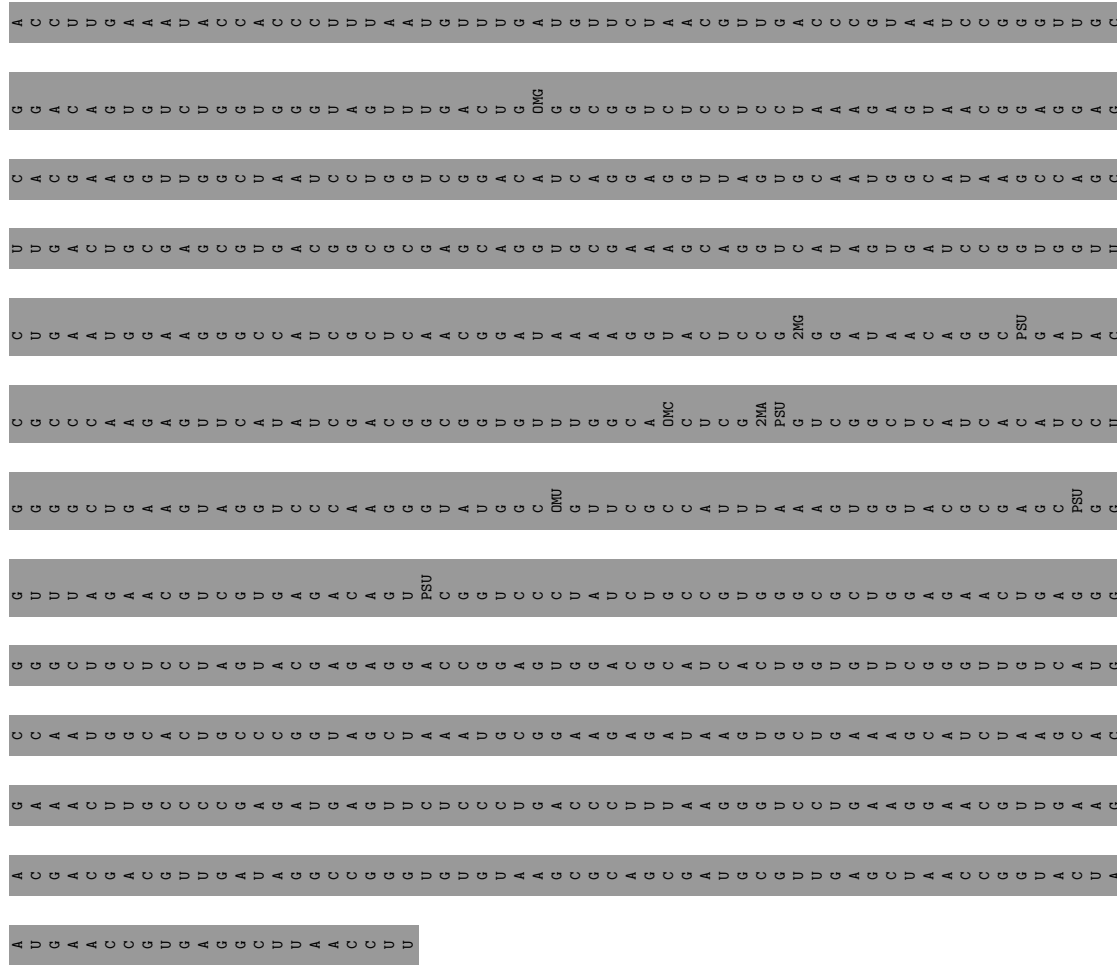
- Molecule 1: 16S rRNA



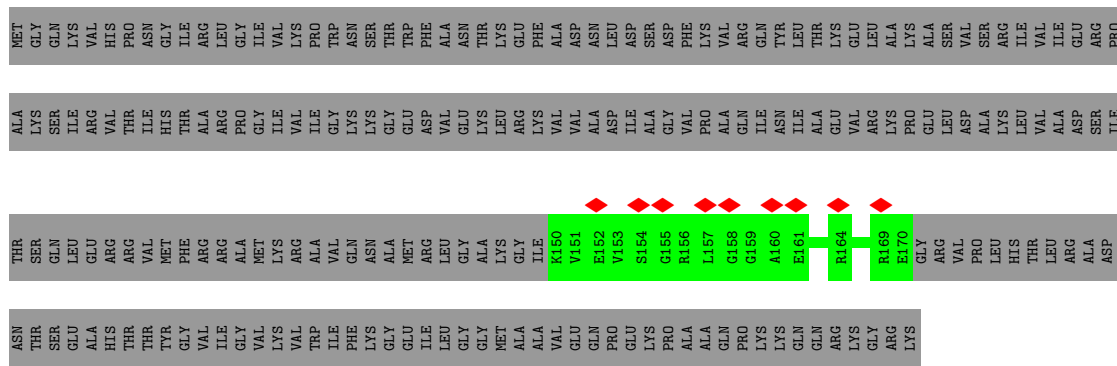


• Molecule 2: 23S rRNA

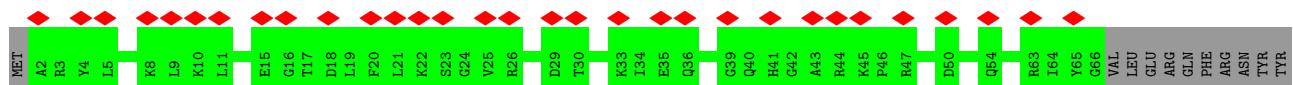




● Molecule 3: 30S ribosomal protein S3



● Molecule 4: 30S ribosomal protein S4

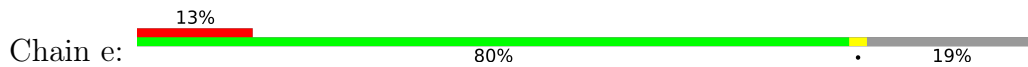


LYS GLU
SER ALA
ASN ILE
ARG VAL
ASP ARG
LEU LYS
GLY LYS
ASN ASN
THR GLY
GLY GLU
LEU LEU
LEU LEU
ALA ALA
SER LEU
LEU LEU
GLY VAL
GLY ARG

VAL SER
PRO PRO
ASN ASN
VAL ASP
VAL VAL
SER SER
ILE ILE
ARG ARG
GLU GLU
LYS LYS
ALA ALA
GLN GLN
SER SER
ARG ARG
VAL VAL
VAL VAL
GLY GLY
LYS LYS

GLU
HIS
LEU
ILE
GLU
LEU
TYR
LYS

Molecule 5: 30S ribosomal protein S5



MET ALA
ALA HIS
ILE ILE
GLU GLU
LYS LYS
GLN VAL
ALA VAL
GLY LEU
E10 E10
V25 V25
K26 K26
G27 G27
G28 G28
D41 D41
G44 G44
R45 R45
K52 K52
A53 A53
R54 R54
E55 E55
R68 R68
R69 R69
N70 N70
M71 M71
A75 A75
L76 L76
N77 N77
N78 N78
L81 L81
G91 G91
A99 A99
S100 S100
E101 E101
G109 G109
L124 L124
D142 D142
E145 E145
ASN ASN
MET MET
ASN ASN
SER SER
PRO PRO
GLU GLU
MET MET
VAL VAL
ALA ALA

ALA
LYS
ARG
GLY
LYS
SER
VAL
GLU
LEU
ILE
GLY
LYS

Molecule 6: mRNA



G G
C C
A A
A A
G G
G G
U U
A A
A43 A43
A44 A44
A45 A45
U47 U47
G48 G48

Molecule 7: P-site tRNA fMet



C G C G C G C G C G
U U G G A A C C
C C A A G G
U28 U28
G42 G42
G A A A
A G A U
A C C G
U U C C
C C C C
C C C C
C C C C

A A
C C
C A

Molecule 8: 30S ribosomal protein S12



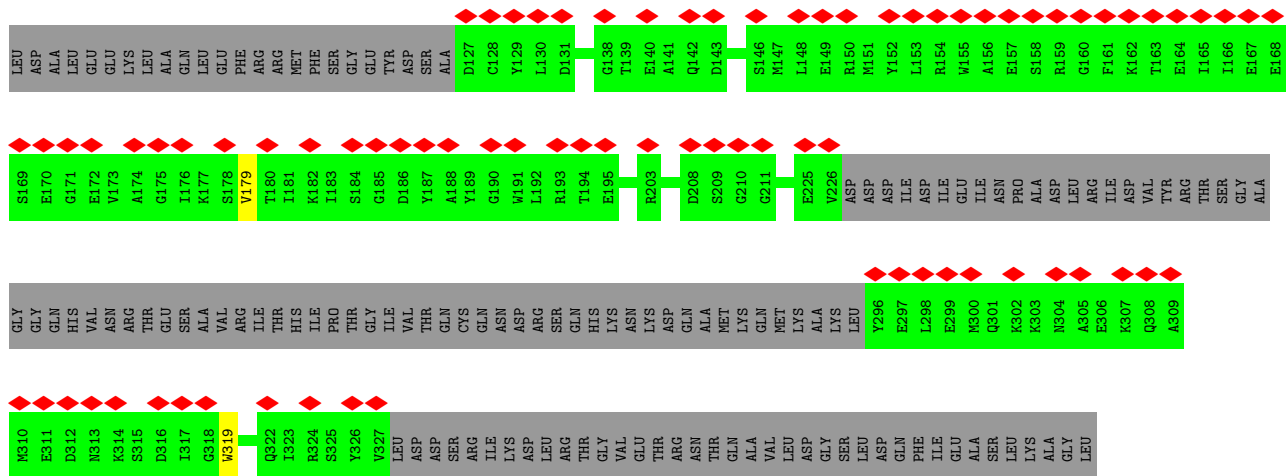
MET
A2 A2
R9 R9
K10 K10
A13 A13
R14 R14
K16 K16
V16 V16
A17 A17
K18 K18
K44 K44
V52 V52
E70 E70
G71 G71
H77 H77
A101 A101
L102 L102
D103 D103
G104 G104
K108 K108
D109 D109
K116 K116
K123 K123
A124 A124

Molecule 9: Peptide chain release factor 2

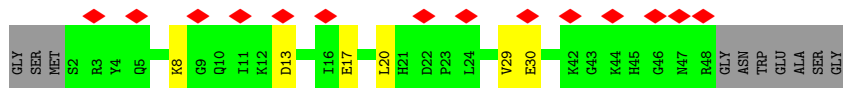


HIS HIS
HIS HIS
HIS HIS
SER SER
ALA ALA
ALA ALA
LEU LEU
GLU ARG
VAL VAL
LEU VAL
PHE PHE
GLN GLN
LYS LYS
PRO PRO
GLY GLY
MET MET
PHE PHE
SER SER
SER SER
LEU LEU
ILE ILE
ASN ASN
PRO PRO
VAL VAL
VAL VAL
ASP ASP
THR THR
LEU LEU
ASP ASP
ILE ILE
GLN GLN
MET MET
LYS LYS
THR THR
GLY GLY
LEU LEU
SER SER
VAL VAL
LEU LEU
GLY GLY
TYR TYR
LEU LEU
ASP ASP
TYR TYR
ASP ASP
ALA ALA
ALA ALA
LYS LYS
GLY GLY
ARG ARG
LEU LEU
GLU GLU
GLU GLU
VAL VAL
ASN ASN
ALA ALA
GLU GLU
LEU LEU
GLU GLU

GLN PRO
ASP ASP
VAL VAL
TRP TRP
ASN ASN
GLU GLU
PRO PRO
GLU GLU
ARG ARG
ALA ALA
GLN GLN
ALA ALA
LEU LEU
GLY GLY
GLN GLN
ARG ARG
SER SER
SER SER
LEU LEU
GLU GLU
ALA ALA
ASN ASN
VAL VAL
VAL VAL
ASP ASP
THR THR
LEU LEU
ASP ASP
ILE ILE
GLN GLN
MET MET
LYS LYS
THR THR
GLN GLN
GLY GLY
LEU LEU
SER SER
VAL VAL
LEU LEU
GLU GLU
TYR TYR
LEU LEU
ASP ASP
TYR TYR
ASP ASP
ALA ALA
ALA ALA
LYS LYS
GLY GLY
ARG ARG
LEU LEU
GLU GLU
THR THR
PHE PHE
ASN ASN
VAL VAL
ALA ALA
GLU GLU
LEU LEU
ALA ALA
GLU GLU



● Molecule 10: Alternative ribosome-rescue factor A



4 Experimental information

Property	Value	Source
EM reconstruction method	SINGLE PARTICLE	Depositor
Imposed symmetry	POINT, C1	Depositor
Number of particles used	155440	Depositor
Resolution determination method	FSC 0.143 CUT-OFF	Depositor
CTF correction method	PHASE FLIPPING AND AMPLITUDE CORRECTION	Depositor
Microscope	JEOL 3200FSC	Depositor
Voltage (kV)	300	Depositor
Electron dose ($e^-/\text{\AA}^2$)	20	Depositor
Minimum defocus (nm)	700	Depositor
Maximum defocus (nm)	3000	Depositor
Magnification	83822	Depositor
Image detector	GATAN K2 SUMMIT (4k x 4k)	Depositor
Maximum map value	0.236	Depositor
Minimum map value	-0.193	Depositor
Average map value	0.000	Depositor
Map value standard deviation	0.005	Depositor
Recommended contour level	0.03	Depositor
Map size (Å)	458.112, 458.112, 458.112	wwPDB
Map dimensions	384, 384, 384	wwPDB
Map angles (°)	90.0, 90.0, 90.0	wwPDB
Pixel spacing (Å)	1.193, 1.193, 1.193	Depositor

5 Model quality [i](#)

5.1 Standard geometry [i](#)

Bond lengths and bond angles in the following residue types are not validated in this section: PSU, MA6, 5MC, 4OC, G7M, 2MG, UR3

The Z score for a bond length (or angle) is the number of standard deviations the observed value is removed from the expected value. A bond length (or angle) with $|Z| > 5$ is considered an outlier worth inspection. RMSZ is the root-mean-square of all Z scores of the bond lengths (or angles).

Mol	Chain	Bond lengths		Bond angles	
		RMSZ	# Z >5	RMSZ	# Z >5
1	a	0.23	0/7167	0.64	3/11159 (0.0%)
2	A	0.18	0/216	0.63	0/334
3	c	0.37	0/171	0.51	0/228
4	d	0.37	0/530	0.55	0/704
5	e	0.36	0/1013	0.56	0/1365
6	z	0.19	0/147	0.59	0/227
7	x	0.20	0/350	0.63	0/542
8	l	0.35	0/969	0.59	0/1300
9	v	0.39	0/1075	0.52	0/1443
10	w	0.34	0/394	0.69	2/519 (0.4%)
All	All	0.28	0/12032	0.62	5/17821 (0.0%)

There are no bond length outliers.

All (5) bond angle outliers are listed below:

Mol	Chain	Res	Type	Atoms	Z	Observed(°)	Ideal(°)
1	a	527	G7M	O3'-P-O5'	9.93	122.87	104.00
10	w	8	LYS	CB-CA-C	5.74	121.87	110.40
1	a	528	C	OP1-P-OP2	-5.62	111.17	119.60
10	w	20	LEU	CA-CB-CG	5.23	127.33	115.30
1	a	1070	U	C2'-C3'-O3'	5.02	121.73	113.70

There are no chirality outliers.

There are no planarity outliers.

5.2 Too-close contacts [i](#)

In the following table, the Non-H and H(model) columns list the number of non-hydrogen atoms and hydrogen atoms in the chain respectively. The H(added) column lists the number of hydrogen

atoms added and optimized by MolProbity. The Clashes column lists the number of clashes within the asymmetric unit, whereas Symm-Clashes lists symmetry-related clashes.

Mol	Chain	Non-H	H(model)	H(added)	Clashes	Symm-Clashes
1	a	6591	0	3340	0	0
2	A	233	0	119	0	0
3	c	169	0	165	0	0
4	d	523	0	558	0	0
5	e	1001	0	1039	0	0
6	z	131	0	66	0	0
7	x	315	0	163	0	0
8	l	955	0	1016	0	0
9	v	1054	0	1004	0	0
10	w	388	0	400	0	0
All	All	11360	0	7870	0	0

The all-atom clashscore is defined as the number of clashes found per 1000 atoms (including hydrogen atoms). The all-atom clashscore for this structure is 3.

There are no clashes within the asymmetric unit.

There are no symmetry-related clashes.

5.3 Torsion angles [i](#)

5.3.1 Protein backbone [i](#)

In the following table, the Percentiles column shows the percent Ramachandran outliers of the chain as a percentile score with respect to all PDB entries followed by that with respect to all EM entries.

The Analysed column shows the number of residues for which the backbone conformation was analysed, and the total number of residues.

Mol	Chain	Analysed	Favoured	Allowed	Outliers	Percentiles	
3	c	19/233 (8%)	18 (95%)	1 (5%)	0	100	100
4	d	63/206 (31%)	62 (98%)	1 (2%)	0	100	100
5	e	134/167 (80%)	123 (92%)	10 (8%)	1 (1%)	22	59
8	l	121/124 (98%)	114 (94%)	6 (5%)	1 (1%)	19	56
9	v	128/383 (33%)	121 (94%)	7 (6%)	0	100	100
10	w	45/57 (79%)	41 (91%)	4 (9%)	0	100	100
All	All	510/1170 (44%)	479 (94%)	29 (6%)	2 (0%)	38	69

All (2) Ramachandran outliers are listed below:

Mol	Chain	Res	Type
8	l	44	LYS
5	e	44	GLY

5.3.2 Protein sidechains [i](#)

In the following table, the Percentiles column shows the percent sidechain outliers of the chain as a percentile score with respect to all PDB entries followed by that with respect to all EM entries.

The Analysed column shows the number of residues for which the sidechain conformation was analysed, and the total number of residues.

Mol	Chain	Analysed	Rotameric	Outliers	Percentiles	
3	c	16/190 (8%)	16 (100%)	0	100	100
4	d	54/173 (31%)	54 (100%)	0	100	100
5	e	102/126 (81%)	100 (98%)	2 (2%)	55	74
8	l	103/104 (99%)	102 (99%)	1 (1%)	76	86
9	v	110/325 (34%)	108 (98%)	2 (2%)	59	77
10	w	40/46 (87%)	36 (90%)	4 (10%)	7	32
All	All	425/964 (44%)	416 (98%)	9 (2%)	56	74

5 of 9 residues with a non-rotameric sidechain are listed below:

Mol	Chain	Res	Type
10	w	29	VAL
10	w	30	GLU
9	v	179	VAL
9	v	319	TRP
10	w	13	ASP

Sometimes sidechains can be flipped to improve hydrogen bonding and reduce clashes. All (2) such sidechains are listed below:

Mol	Chain	Res	Type
5	e	132	ASN
9	v	214	HIS

5.3.3 RNA [i](#)

Mol	Chain	Analysed	Backbone Outliers	Pucker Outliers
1	a	297/1533 (19%)	68 (22%)	0
2	A	10/2904 (0%)	2 (20%)	1 (10%)
6	z	5/18 (27%)	1 (20%)	0
7	x	14/77 (18%)	0	0
All	All	326/4532 (7%)	71 (21%)	1 (0%)

5 of 71 RNA backbone outliers are listed below:

Mol	Chain	Res	Type
1	a	7	A
1	a	9	G
1	a	13	U
1	a	14	U
1	a	22	G

All (1) RNA pucker outliers are listed below:

Mol	Chain	Res	Type
2	A	1913	A

5.4 Non-standard residues in protein, DNA, RNA chains [i](#)

10 non-standard protein/DNA/RNA residues are modelled in this entry.

In the following table, the Counts columns list the number of bonds (or angles) for which Mogul statistics could be retrieved, the number of bonds (or angles) that are observed in the model and the number of bonds (or angles) that are defined in the Chemical Component Dictionary. The Link column lists molecule types, if any, to which the group is linked. The Z score for a bond length (or angle) is the number of standard deviations the observed value is removed from the expected value. A bond length (or angle) with $|Z| > 2$ is considered an outlier worth inspection. RMSZ is the root-mean-square of all Z scores of the bond lengths (or angles).

Mol	Type	Chain	Res	Link	Bond lengths			Bond angles		
					Counts	RMSZ	# Z > 2	Counts	RMSZ	# Z > 2
1	MA6	a	1518	1	19,26,27	1.25	2 (10%)	18,38,41	2.23	5 (27%)
1	MA6	a	1519	1	19,26,27	1.22	3 (15%)	18,38,41	2.04	6 (33%)
1	5MC	a	1407	1	18,22,23	1.01	1 (5%)	26,32,35	1.26	5 (19%)
1	G7M	a	527	1	20,26,27	1.14	2 (10%)	17,39,42	1.00	0
2	PSU	A	1917	2	18,21,22	1.40	3 (16%)	22,30,33	1.95	5 (22%)
1	UR3	a	1498	1	19,22,23	1.23	2 (10%)	26,32,35	1.67	2 (7%)
2	PSU	A	1911	2	18,21,22	1.39	3 (16%)	22,30,33	1.91	5 (22%)
1	2MG	a	1516	1	18,26,27	1.00	1 (5%)	16,38,41	1.23	3 (18%)

Mol	Type	Chain	Res	Link	Bond lengths			Bond angles		
					Counts	RMSZ	# Z > 2	Counts	RMSZ	# Z > 2
1	PSU	a	516	1	18,21,22	1.40	3 (16%)	22,30,33	2.03	5 (22%)
1	4OC	a	1402	1	20,23,24	0.87	2 (10%)	26,32,35	1.29	6 (23%)

In the following table, the Chirals column lists the number of chiral outliers, the number of chiral centers analysed, the number of these observed in the model and the number defined in the Chemical Component Dictionary. Similar counts are reported in the Torsion and Rings columns. '-' means no outliers of that kind were identified.

Mol	Type	Chain	Res	Link	Chirals	Torsions	Rings
1	MA6	a	1518	1	-	4/7/29/30	0/3/3/3
1	MA6	a	1519	1	-	5/7/29/30	0/3/3/3
1	5MC	a	1407	1	-	0/7/25/26	0/2/2/2
1	G7M	a	527	1	-	0/3/25/26	0/3/3/3
2	PSU	A	1917	2	-	0/7/25/26	0/2/2/2
1	UR3	a	1498	1	-	0/7/25/26	0/2/2/2
2	PSU	A	1911	2	-	0/7/25/26	0/2/2/2
1	2MG	a	1516	1	-	2/5/27/28	0/3/3/3
1	PSU	a	516	1	-	0/7/25/26	0/2/2/2
1	4OC	a	1402	1	-	2/9/29/30	0/2/2/2

The worst 5 of 22 bond length outliers are listed below:

Mol	Chain	Res	Type	Atoms	Z	Observed(Å)	Ideal(Å)
2	A	1911	PSU	C6-C5	4.29	1.40	1.35
1	a	516	PSU	C6-C5	4.24	1.40	1.35
2	A	1917	PSU	C6-C5	4.23	1.40	1.35
1	a	1407	5MC	C6-C5	3.09	1.39	1.34
1	a	1498	UR3	C2-N1	3.01	1.42	1.38

The worst 5 of 42 bond angle outliers are listed below:

Mol	Chain	Res	Type	Atoms	Z	Observed(°)	Ideal(°)
1	a	1518	MA6	N1-C6-N6	7.07	124.49	117.06
1	a	1498	UR3	C4-N3-C2	-6.12	118.80	124.56
1	a	516	PSU	N1-C2-N3	5.91	121.82	115.13
2	A	1917	PSU	N1-C2-N3	5.74	121.63	115.13
2	A	1911	PSU	N1-C2-N3	5.70	121.59	115.13

There are no chirality outliers.

5 of 13 torsion outliers are listed below:

Mol	Chain	Res	Type	Atoms
1	a	1402	4OC	O4'-C4'-C5'-O5'
1	a	1402	4OC	C3'-C4'-C5'-O5'
1	a	1518	MA6	C5-C6-N6-C9
1	a	1518	MA6	C5-C6-N6-C10
1	a	1519	MA6	O4'-C4'-C5'-O5'

There are no ring outliers.

No monomer is involved in short contacts.

5.5 Carbohydrates [i](#)

There are no monosaccharides in this entry.

5.6 Ligand geometry [i](#)

There are no ligands in this entry.

5.7 Other polymers [i](#)

There are no such residues in this entry.

5.8 Polymer linkage issues [i](#)

There are no chain breaks in this entry.

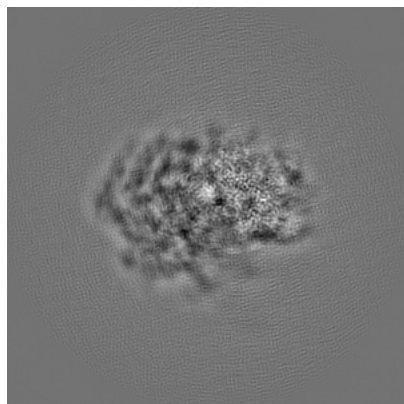
6 Map visualisation [i](#)

This section contains visualisations of the EMDB entry EMD-8506. These allow visual inspection of the internal detail of the map and identification of artifacts.

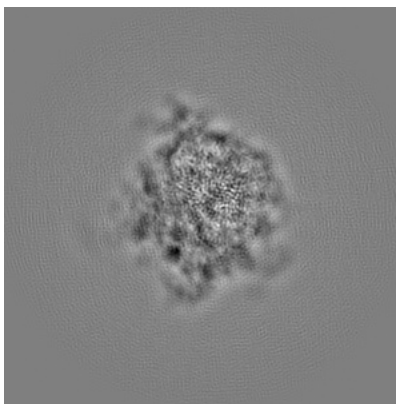
Images derived from a raw map, generated by summing the deposited half-maps, are presented below the corresponding image components of the primary map to allow further visual inspection and comparison with those of the primary map.

6.1 Orthogonal projections [i](#)

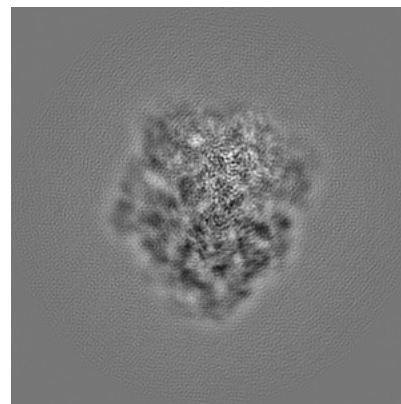
6.1.1 Primary map



X

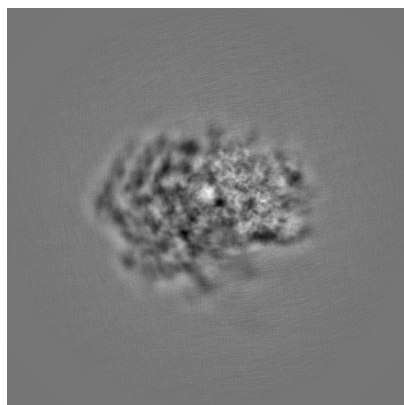


Y

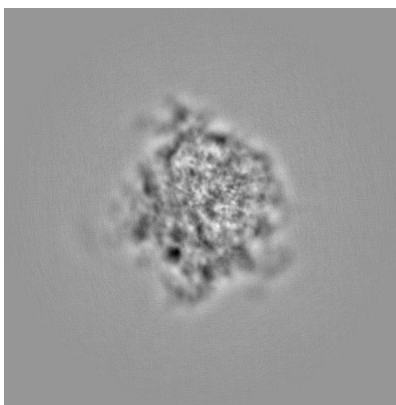


Z

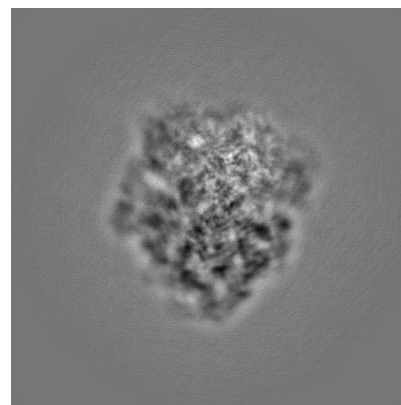
6.1.2 Raw map



X



Y

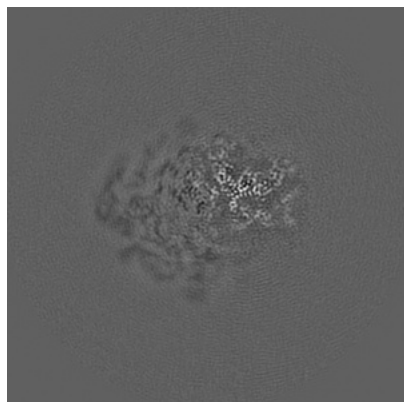


Z

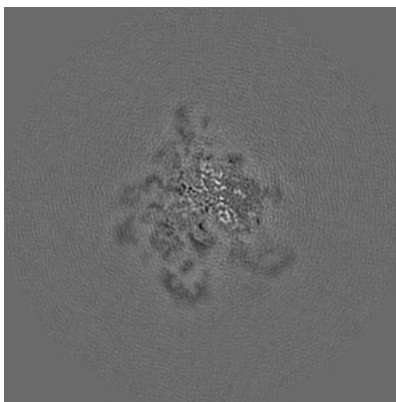
The images above show the map projected in three orthogonal directions.

6.2 Central slices [i](#)

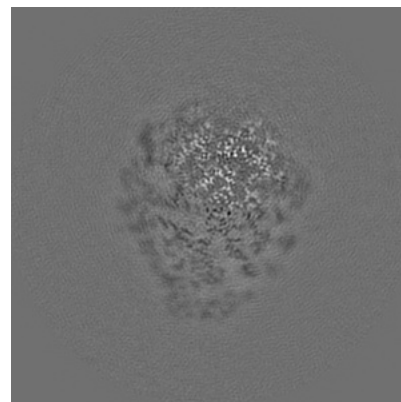
6.2.1 Primary map



X Index: 192

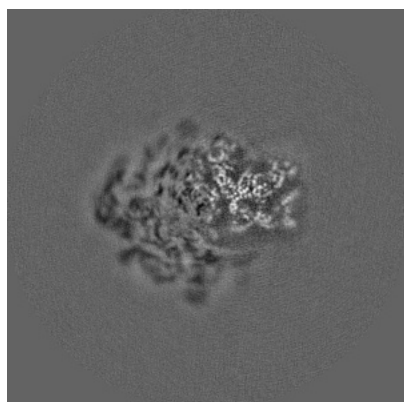


Y Index: 192

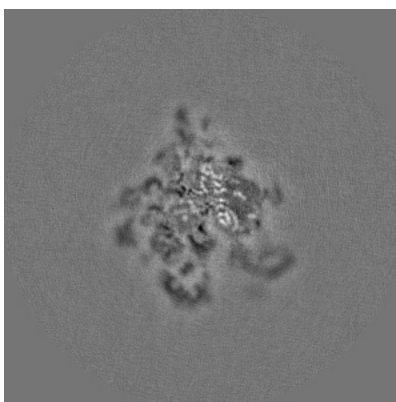


Z Index: 192

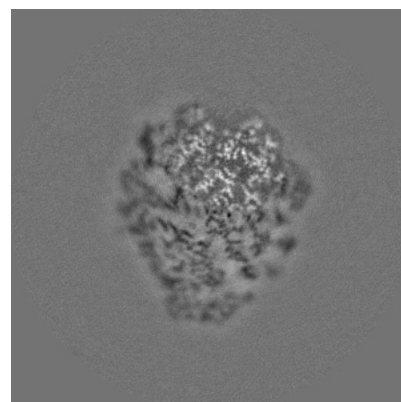
6.2.2 Raw map



X Index: 192



Y Index: 192

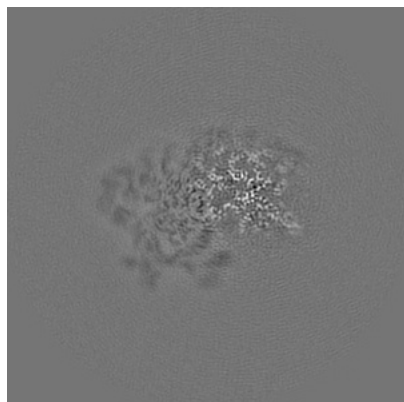


Z Index: 192

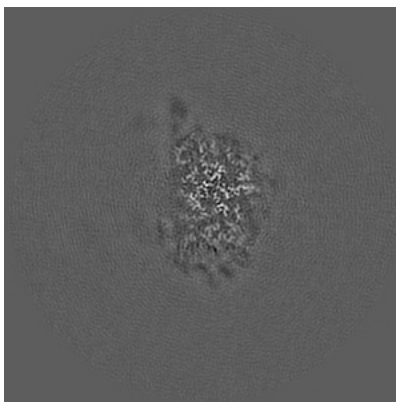
The images above show central slices of the map in three orthogonal directions.

6.3 Largest variance slices [i](#)

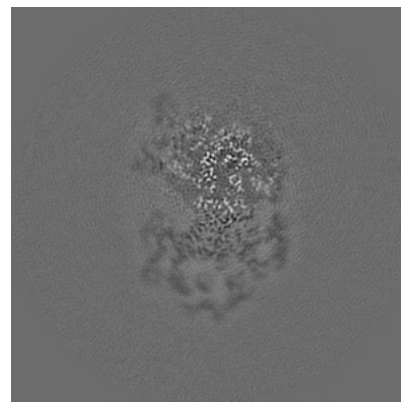
6.3.1 Primary map



X Index: 208

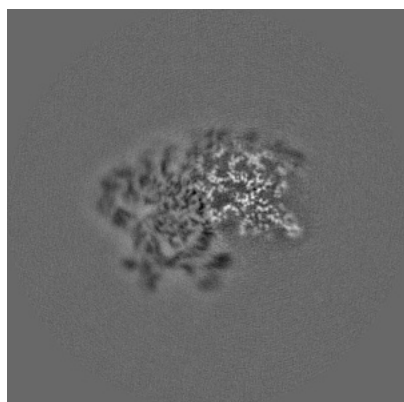


Y Index: 241

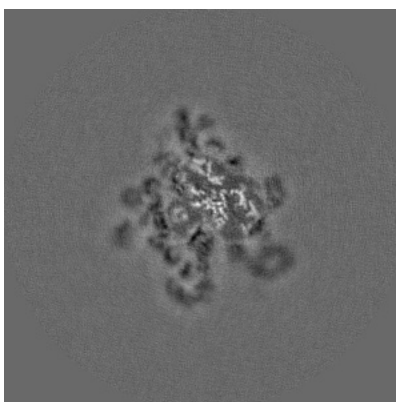


Z Index: 208

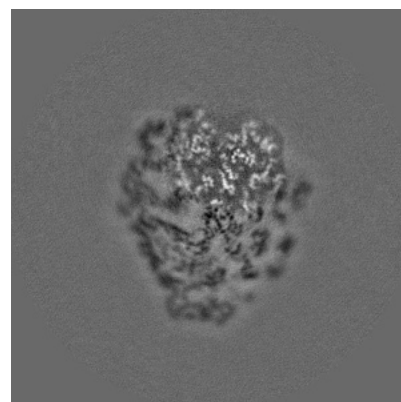
6.3.2 Raw map



X Index: 208



Y Index: 197

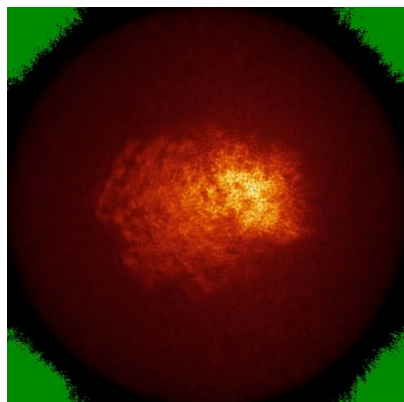


Z Index: 195

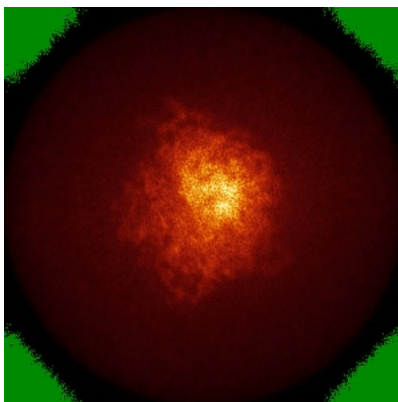
The images above show the largest variance slices of the map in three orthogonal directions.

6.4 Orthogonal standard-deviation projections (False-color) [i](#)

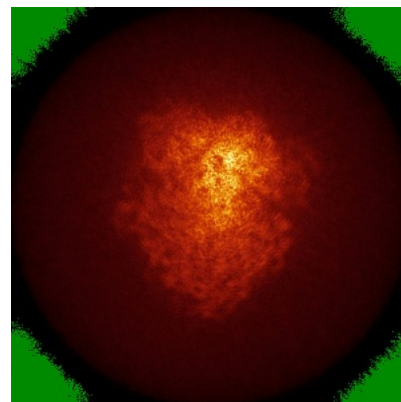
6.4.1 Primary map



X

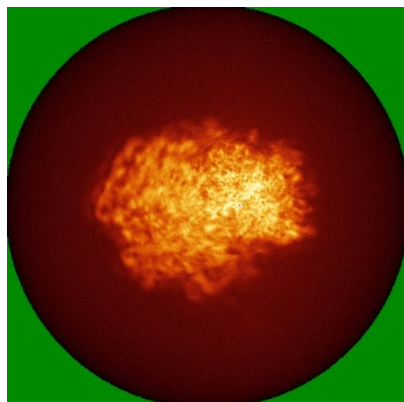


Y

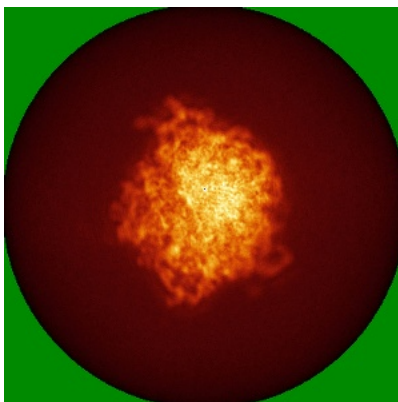


Z

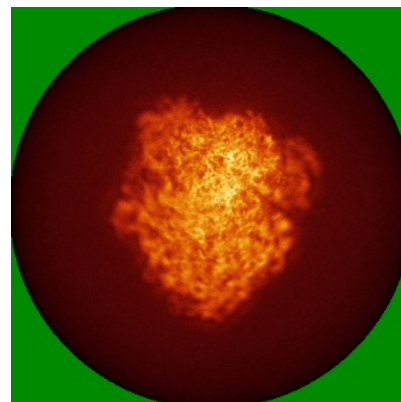
6.4.2 Raw map



X



Y

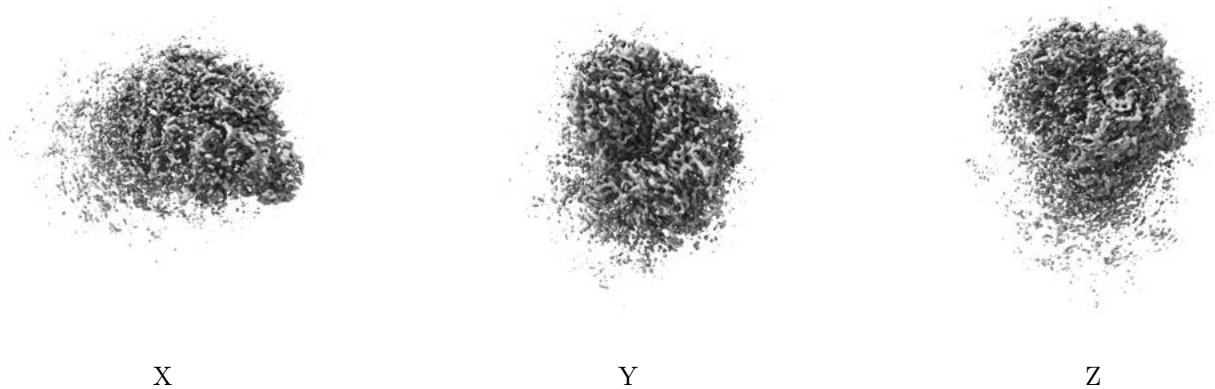


Z

The images above show the map standard deviation projections with false color in three orthogonal directions. Minimum values are shown in green, max in blue, and dark to light orange shades represent small to large values respectively.

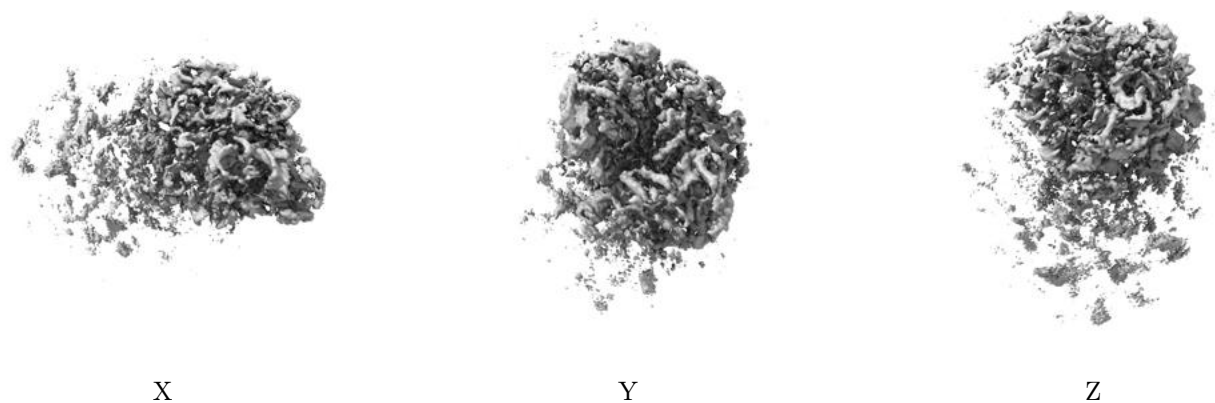
6.5 Orthogonal surface views [i](#)

6.5.1 Primary map



The images above show the 3D surface view of the map at the recommended contour level 0.03. These images, in conjunction with the slice images, may facilitate assessment of whether an appropriate contour level has been provided.

6.5.2 Raw map



These images show the 3D surface of the raw map. The raw map's contour level was selected so that its surface encloses the same volume as the primary map does at its recommended contour level.

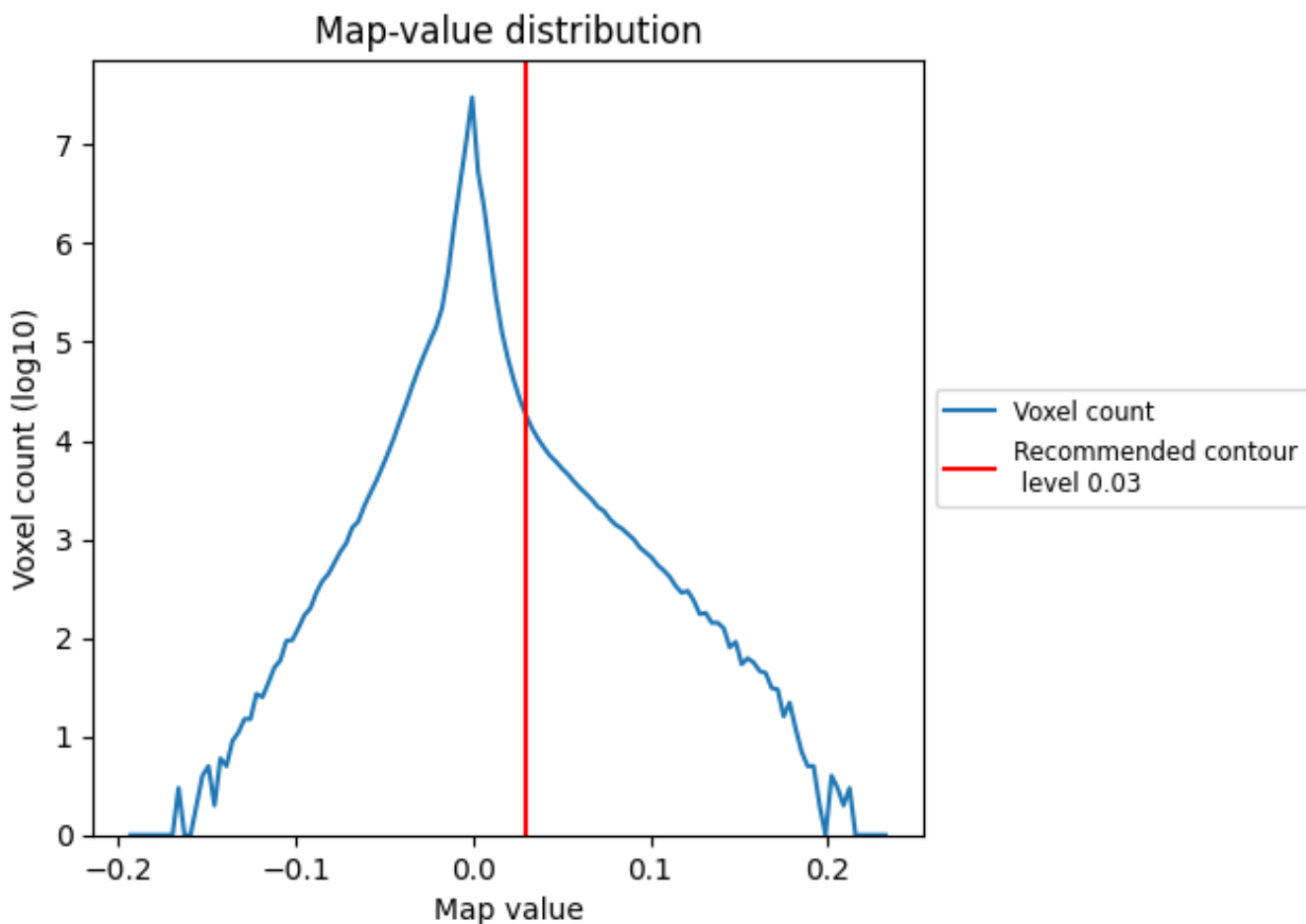
6.6 Mask visualisation [i](#)

This section was not generated. No masks/segmentation were deposited.

7 Map analysis [i](#)

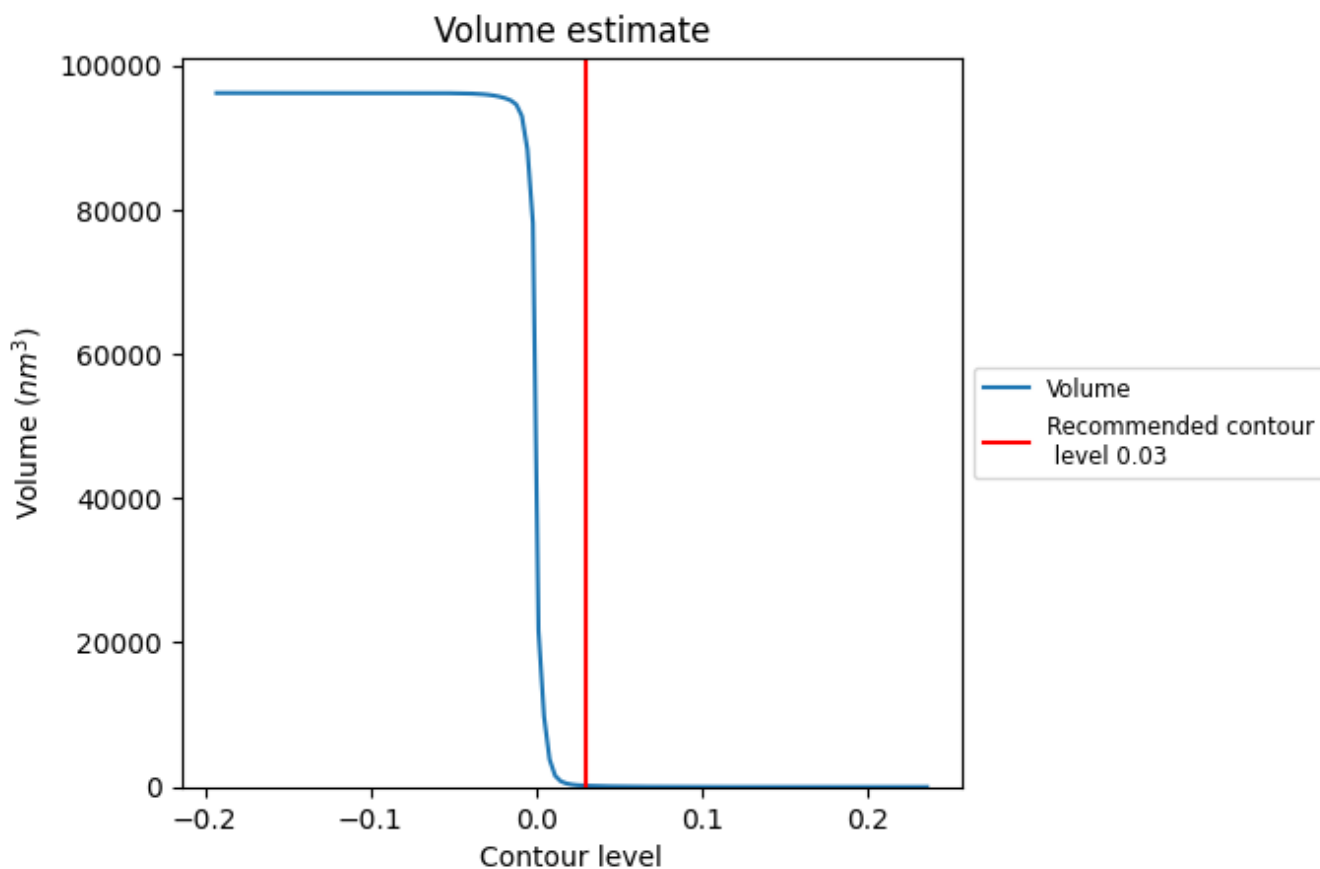
This section contains the results of statistical analysis of the map.

7.1 Map-value distribution [i](#)



The map-value distribution is plotted in 128 intervals along the x-axis. The y-axis is logarithmic. A spike in this graph at zero usually indicates that the volume has been masked.

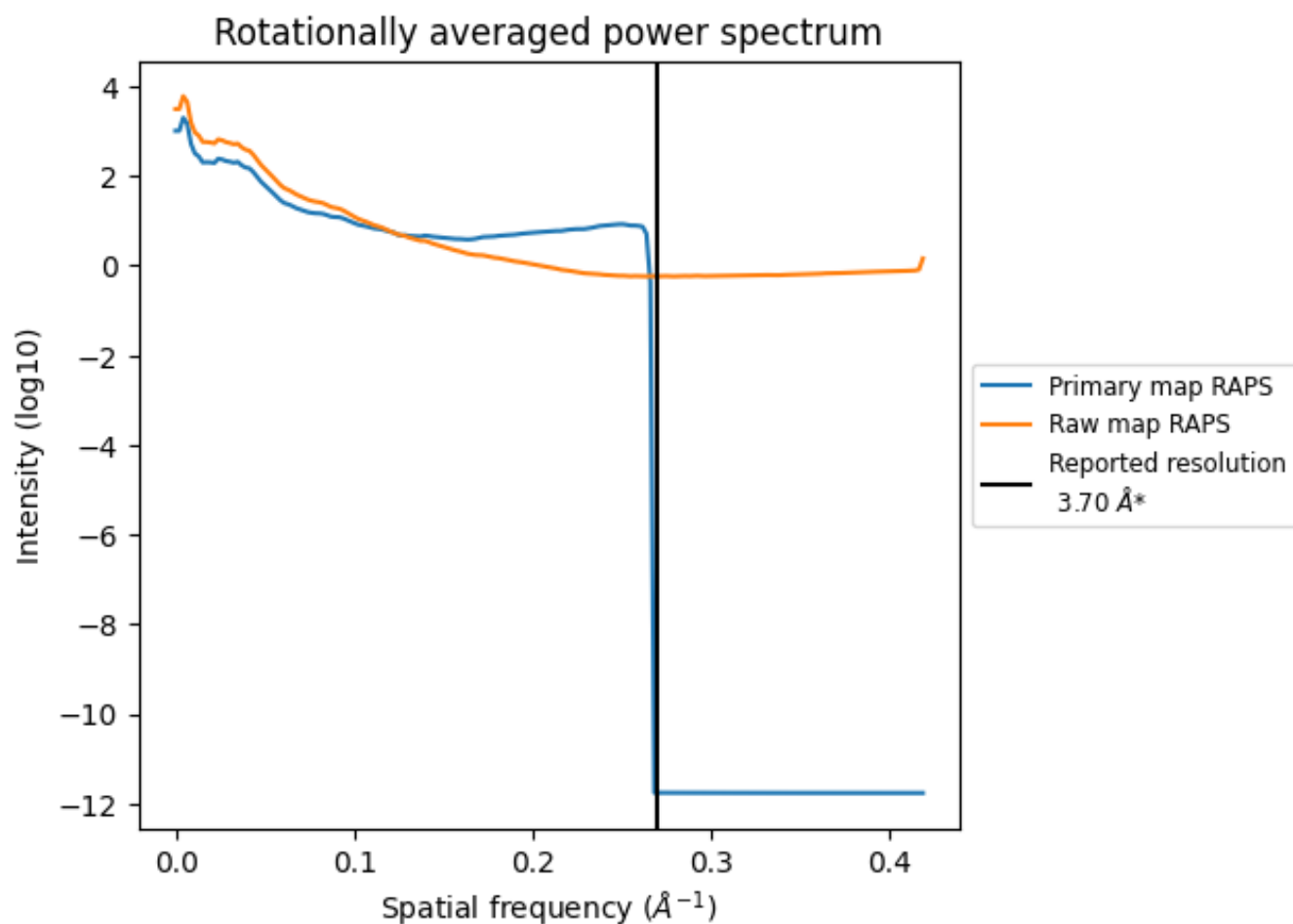
7.2 Volume estimate [i](#)



The volume at the recommended contour level is 175 nm³; this corresponds to an approximate mass of 158 kDa.

The volume estimate graph shows how the enclosed volume varies with the contour level. The recommended contour level is shown as a vertical line and the intersection between the line and the curve gives the volume of the enclosed surface at the given level.

7.3 Rotationally averaged power spectrum [i](#)

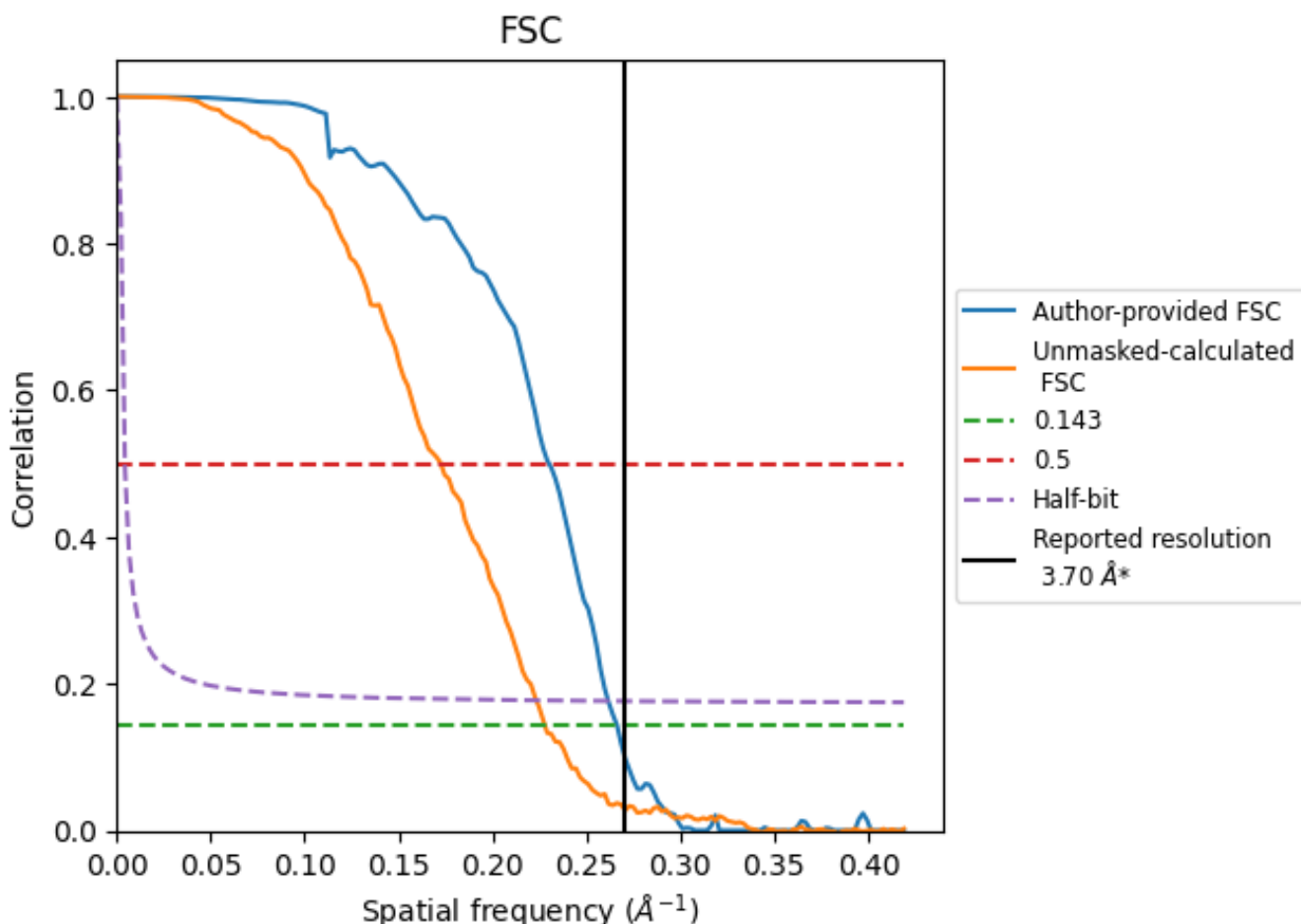


*Reported resolution corresponds to spatial frequency of 0.270 Å⁻¹

8 Fourier-Shell correlation [i](#)

Fourier-Shell Correlation (FSC) is the most commonly used method to estimate the resolution of single-particle and subtomogram-averaged maps. The shape of the curve depends on the imposed symmetry, mask and whether or not the two 3D reconstructions used were processed from a common reference. The reported resolution is shown as a black line. A curve is displayed for the half-bit criterion in addition to lines showing the 0.143 gold standard cut-off and 0.5 cut-off.

8.1 FSC [i](#)



*Reported resolution corresponds to spatial frequency of 0.270 Å⁻¹

8.2 Resolution estimates [i](#)

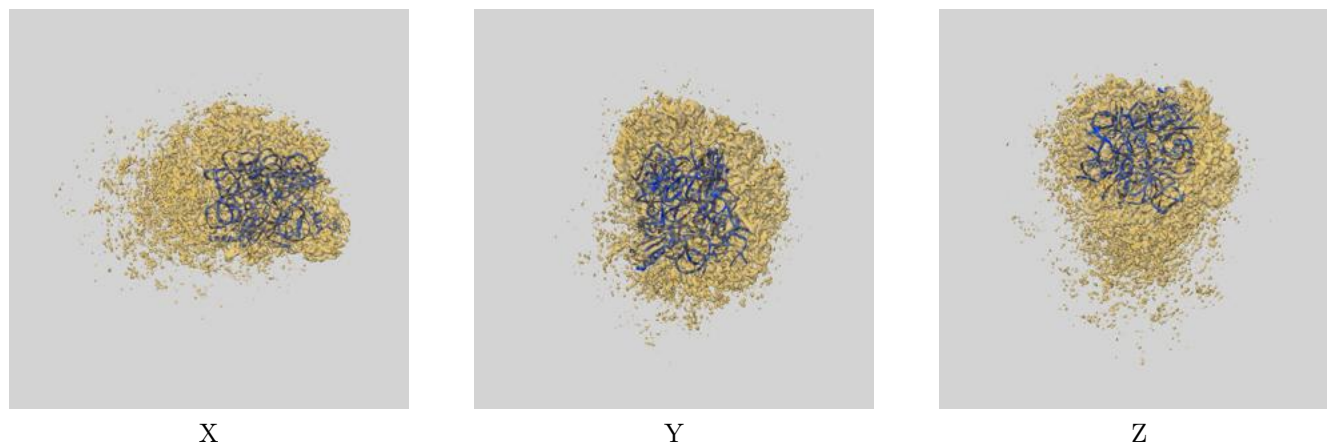
Resolution estimate (Å)	Estimation criterion (FSC cut-off)		
	0.143	0.5	Half-bit
Reported by author	3.70	-	-
Author-provided FSC curve	3.75	4.35	3.82
Unmasked-calculated*	4.39	5.80	4.48

*Resolution estimate based on FSC curve calculated by comparison of deposited half-maps. The value from deposited half-maps intersecting FSC 0.143 CUT-OFF 4.39 differs from the reported value 3.7 by more than 10 %

9 Map-model fit [i](#)

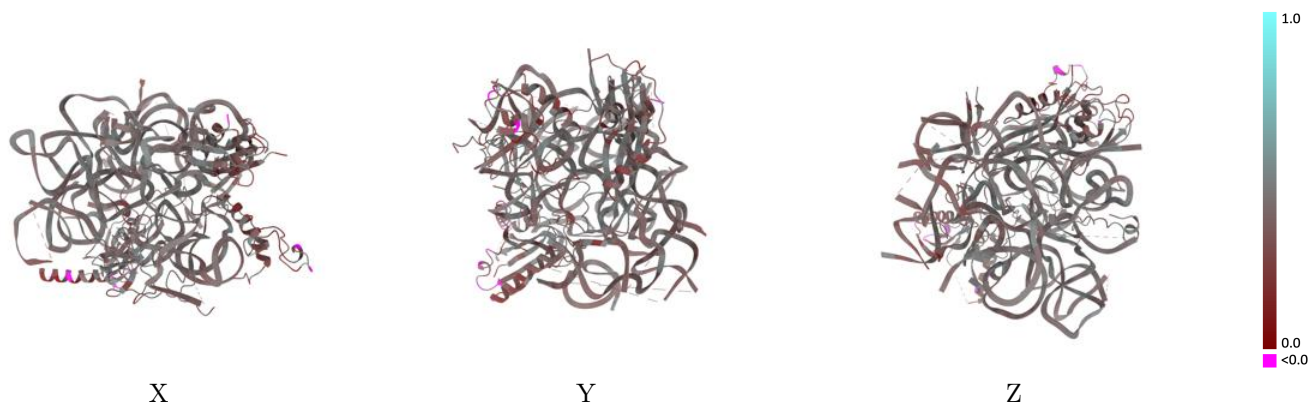
This section contains information regarding the fit between EMDB map EMD-8506 and PDB model 5U4J. Per-residue inclusion information can be found in section 3 on page 7.

9.1 Map-model overlay [i](#)



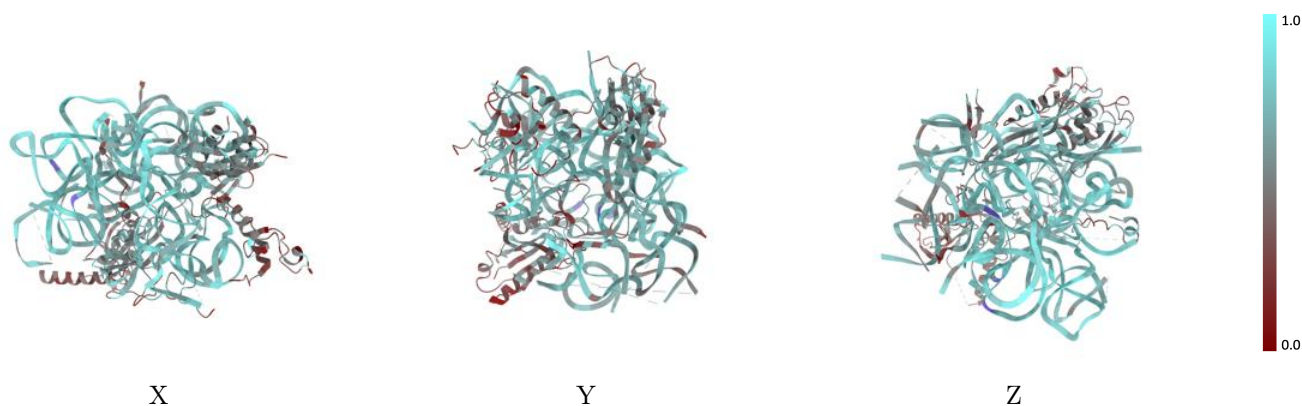
The images above show the 3D surface view of the map at the recommended contour level 0.03 at 50% transparency in yellow overlaid with a ribbon representation of the model coloured in blue. These images allow for the visual assessment of the quality of fit between the atomic model and the map.

9.2 Q-score mapped to coordinate model [i](#)



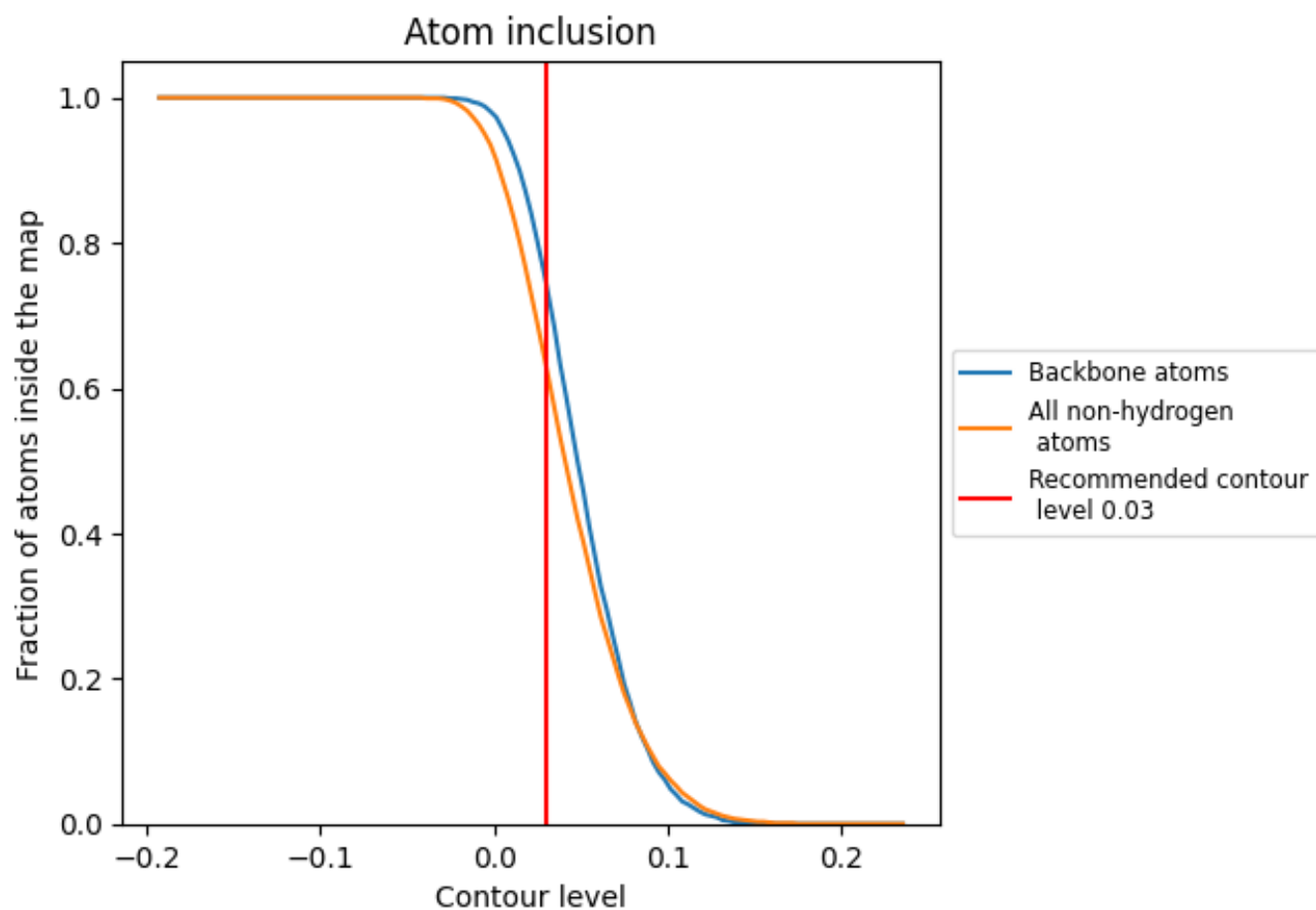
The images above show the model with each residue coloured according to its Q-score. This shows their resolvability in the map with higher Q-score values reflecting better resolvability. Please note: Q-score is calculating the resolvability of atoms, and thus high values are only expected at resolutions at which atoms can be resolved. Low Q-score values may therefore be expected for many entries.

9.3 Atom inclusion mapped to coordinate model [i](#)



The images above show the model with each residue coloured according to its atom inclusion. This shows to what extent they are inside the map at the recommended contour level (0.03).























9.4 Atom inclusion [i](#)



At the recommended contour level, 75% of all backbone atoms, 63% of all non-hydrogen atoms, are inside the map.

9.5 Map-model fit summary [i](#)

The table lists the average atom inclusion at the recommended contour level (0.03) and Q-score for the entire model and for each chain.

Chain	Atom inclusion	Q-score
All	 0.6320	 0.4020
A	 0.7170	 0.4250
a	 0.7300	 0.4250
c	 0.4600	 0.4170
d	 0.3920	 0.3230
e	 0.5350	 0.3870
l	 0.5740	 0.4250
v	 0.3460	 0.3040
w	 0.4970	 0.3770
x	 0.6250	 0.3840
z	 0.4120	 0.3480

