



Full wwPDB X-ray Structure Validation Report ⓘ

Sep 16, 2023 – 10:26 PM EDT

PDB ID : 4U5W
Title : Crystal Structure of HIV-1 Nef-SF2 Core Domain in Complex with the Src Family Kinase Hck SH3-SH2 Tandem Regulatory Domains
Authors : Alvarado, J.J.; Yeh, J.I.; Smithgall, T.E.
Deposited on : 2014-07-25
Resolution : 1.86 Å(reported)

This is a Full wwPDB X-ray Structure Validation Report for a publicly released PDB entry.

We welcome your comments at validation@mail.wwpdb.org

A user guide is available at

<https://www.wwpdb.org/validation/2017/XrayValidationReportHelp>

with specific help available everywhere you see the ⓘ symbol.

The types of validation reports are described at

<http://www.wwpdb.org/validation/2017/FAQs#types>.

The following versions of software and data (see [references ⓘ](#)) were used in the production of this report:

MolProbity : 4.02b-467
Mogul : 1.8.5 (274361), CSD as541be (2020)
Xtriage (Phenix) : 1.13
EDS : 2.35.1
Percentile statistics : 20191225.v01 (using entries in the PDB archive December 25th 2019)
Refmac : 5.8.0158
CCP4 : 7.0.044 (Gargrove)
Ideal geometry (proteins) : Engh & Huber (2001)
Ideal geometry (DNA, RNA) : Parkinson et al. (1996)
Validation Pipeline (wwPDB-VP) : 2.35.1

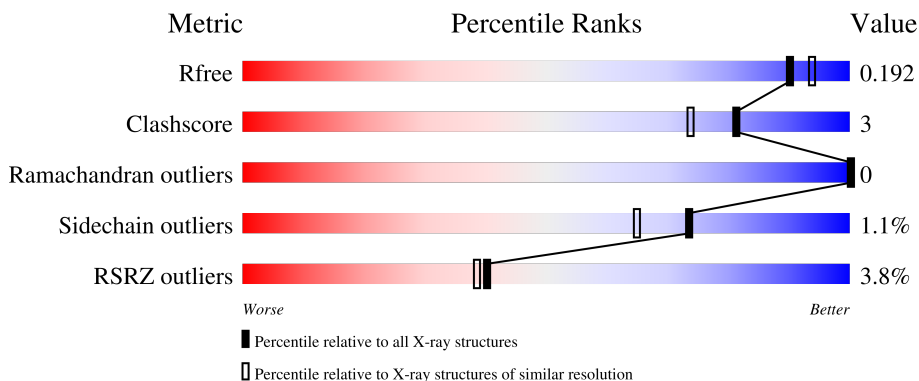
1 Overall quality at a glance i

The following experimental techniques were used to determine the structure:

X-RAY DIFFRACTION

The reported resolution of this entry is 1.86 Å.

Percentile scores (ranging between 0-100) for global validation metrics of the entry are shown in the following graphic. The table shows the number of entries on which the scores are based.



Metric	Whole archive (#Entries)	Similar resolution (#Entries, resolution range(Å))
R_{free}	130704	2469 (1.86-1.86)
Clashscore	141614	2625 (1.86-1.86)
Ramachandran outliers	138981	2592 (1.86-1.86)
Sidechain outliers	138945	2592 (1.86-1.86)
RSRZ outliers	127900	2436 (1.86-1.86)

The table below summarises the geometric issues observed across the polymeric chains and their fit to the electron density. The red, orange, yellow and green segments of the lower bar indicate the fraction of residues that contain outliers for ≥ 3 , 2, 1 and 0 types of geometric quality criteria respectively. A grey segment represents the fraction of residues that are not modelled. The numeric value for each fraction is indicated below the corresponding segment, with a dot representing fractions $\leq 5\%$. The upper red bar (where present) indicates the fraction of residues that have poor fit to the electron density. The numeric value is given above the bar.

Mol	Chain	Length	Quality of chain
1	A	149	 2% 70% 7% 22%
1	C	149	 70% 5% 26%
2	B	180	 7% 87% 9%
2	D	180	 3% 85% 11%

The following table lists non-polymeric compounds, carbohydrate monomers and non-standard

residues in protein, DNA, RNA chains that are outliers for geometric or electron-density-fit criteria:

Mol	Type	Chain	Res	Chirality	Geometry	Clashes	Electron density
4	IOD	A	304	-	-	X	-
4	IOD	D	302	-	-	X	-

2 Entry composition [i](#)

There are 5 unique types of molecules in this entry. The entry contains 5067 atoms, of which 0 are hydrogens and 0 are deuteriums.

In the tables below, the ZeroOcc column contains the number of atoms modelled with zero occupancy, the AltConf column contains the number of residues with at least one atom in alternate conformation and the Trace column contains the number of residues modelled with at most 2 atoms.

- Molecule 1 is a protein called Protein Nef.

Mol	Chain	Residues	Atoms					ZeroOcc	AltConf	Trace
			Total	C	N	O	S			
1	A	116	990	655	169	163	3	0	2	0
1	C	111	943	628	161	151	3	0	1	0

There are 2 discrepancies between the modelled and reference sequences:

Chain	Residue	Modelled	Actual	Comment	Reference
A	61	MET	-	initiating methionine	UNP P03407
C	61	MET	-	initiating methionine	UNP P03407

- Molecule 2 is a protein called Tyrosine-protein kinase HCK.

Mol	Chain	Residues	Atoms					ZeroOcc	AltConf	Trace
			Total	C	N	O	S			
2	B	163	1292	818	221	247	6	0	3	0
2	D	160	1287	818	216	246	7	0	2	0

There are 18 discrepancies between the modelled and reference sequences:

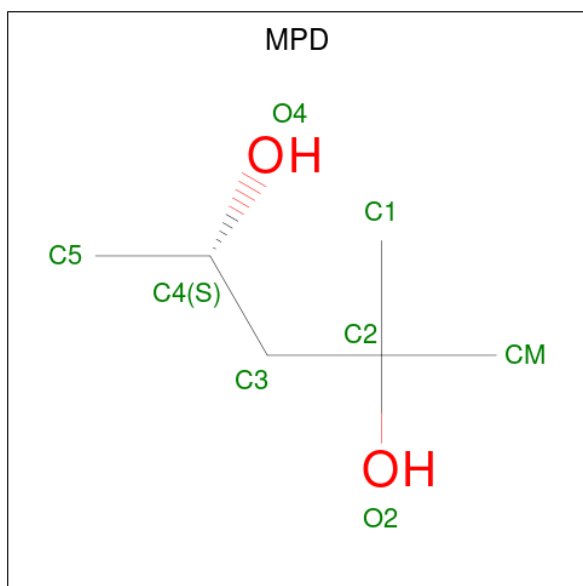
Chain	Residue	Modelled	Actual	Comment	Reference
B	74	MET	-	initiating methionine	UNP P08631
B	247	LEU	-	expression tag	UNP P08631
B	248	GLU	-	expression tag	UNP P08631
B	249	HIS	-	expression tag	UNP P08631
B	250	HIS	-	expression tag	UNP P08631
B	251	HIS	-	expression tag	UNP P08631
B	252	HIS	-	expression tag	UNP P08631
B	253	HIS	-	expression tag	UNP P08631
B	254	HIS	-	expression tag	UNP P08631
D	74	MET	-	initiating methionine	UNP P08631

Continued on next page...

Continued from previous page...

Chain	Residue	Modelled	Actual	Comment	Reference
D	247	LEU	-	expression tag	UNP P08631
D	248	GLU	-	expression tag	UNP P08631
D	249	HIS	-	expression tag	UNP P08631
D	250	HIS	-	expression tag	UNP P08631
D	251	HIS	-	expression tag	UNP P08631
D	252	HIS	-	expression tag	UNP P08631
D	253	HIS	-	expression tag	UNP P08631
D	254	HIS	-	expression tag	UNP P08631

- Molecule 3 is (4S)-2-METHYL-2,4-PENTANEDIOL (three-letter code: MPD) (formula: C₆H₁₄O₂).



Mol	Chain	Residues	Atoms	ZeroOcc	AltConf
3	A	1	Total C O 8 6 2	0	0
3	A	1	Total C O 8 6 2	0	0
3	A	1	Total C O 8 6 2	0	0

- Molecule 4 is IODIDE ION (three-letter code: IOD) (formula: I).

Mol	Chain	Residues	Atoms	ZeroOcc	AltConf
4	A	1	Total I 1 1	0	0

Continued on next page...

Continued from previous page...

Mol	Chain	Residues	Atoms	ZeroOcc	AltConf
4	B	2	Total I 2 2	0	0
4	C	1	Total I 1 1	0	0
4	D	2	Total I 2 2	0	0

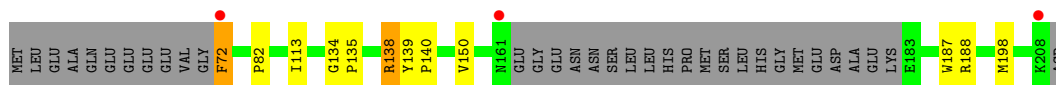
- Molecule 5 is water.

Mol	Chain	Residues	Atoms	ZeroOcc	AltConf
5	A	126	Total O 126 126	0	0
5	B	96	Total O 96 96	0	0
5	C	143	Total O 143 143	0	0
5	D	160	Total O 160 160	0	0

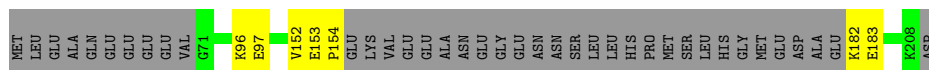
3 Residue-property plots [i](#)

These plots are drawn for all protein, RNA, DNA and oligosaccharide chains in the entry. The first graphic for a chain summarises the proportions of the various outlier classes displayed in the second graphic. The second graphic shows the sequence view annotated by issues in geometry and electron density. Residues are color-coded according to the number of geometric quality criteria for which they contain at least one outlier: green = 0, yellow = 1, orange = 2 and red = 3 or more. A red dot above a residue indicates a poor fit to the electron density ($RSRZ > 2$). Stretches of 2 or more consecutive residues without any outlier are shown as a green connector. Residues present in the sample, but not in the model, are shown in grey.

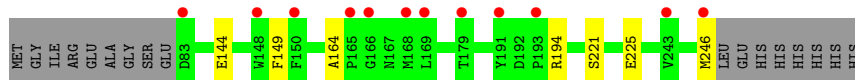
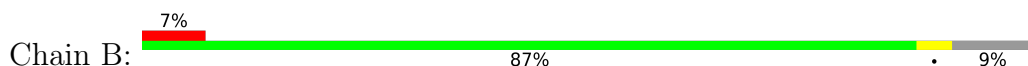
• Molecule 1: Protein Nef



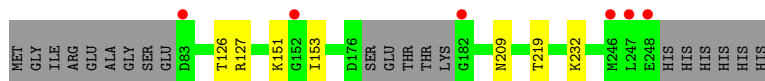
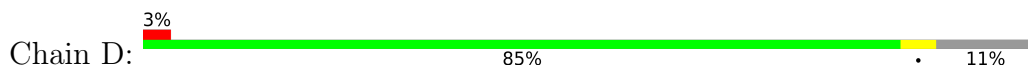
• Molecule 1: Protein Nef



• Molecule 2: Tyrosine-protein kinase HCK



• Molecule 2: Tyrosine-protein kinase HCK



4 Data and refinement statistics

Property	Value	Source
Space group	P 1	Depositor
Cell constants a, b, c, α , β , γ	56.49Å 57.27Å 72.11Å 112.28° 96.09° 106.00°	Depositor
Resolution (Å)	26.38 – 1.86 49.77 – 1.86	Depositor EDS
% Data completeness (in resolution range)	97.5 (26.38-1.86) 91.6 (49.77-1.86)	Depositor EDS
R_{merge}	(Not available)	Depositor
R_{sym}	(Not available)	Depositor
$\langle I/\sigma(I) \rangle$ ¹	2.16 (at 1.86Å)	Xtrriage
Refinement program	PHENIX (phenix.refine: 1.9_1692)	Depositor
R, R_{free}	0.169 , 0.195 0.173 , 0.192	Depositor DCC
R_{free} test set	3252 reflections (5.04%)	wwPDB-VP
Wilson B-factor (Å ²)	19.9	Xtrriage
Anisotropy	0.382	Xtrriage
Bulk solvent k_{sol} (e/Å ³), B_{sol} (Å ²)	0.31 , 51.9	EDS
L-test for twinning ²	$\langle L \rangle = 0.50$, $\langle L^2 \rangle = 0.33$	Xtrriage
Estimated twinning fraction	No twinning to report.	Xtrriage
F_o, F_c correlation	0.96	EDS
Total number of atoms	5067	wwPDB-VP
Average B, all atoms (Å ²)	36.0	wwPDB-VP

Xtrriage's analysis on translational NCS is as follows: *The largest off-origin peak in the Patterson function is 7.62% of the height of the origin peak. No significant pseudotranslation is detected.*

¹Intensities estimated from amplitudes.

²Theoretical values of $\langle |L| \rangle$, $\langle L^2 \rangle$ for acentric reflections are 0.5, 0.333 respectively for untwinned datasets, and 0.375, 0.2 for perfectly twinned datasets.

5 Model quality i

5.1 Standard geometry i

Bond lengths and bond angles in the following residue types are not validated in this section: IOD, MPD

The Z score for a bond length (or angle) is the number of standard deviations the observed value is removed from the expected value. A bond length (or angle) with $|Z| > 5$ is considered an outlier worth inspection. RMSZ is the root-mean-square of all Z scores of the bond lengths (or angles).

Mol	Chain	Bond lengths		Bond angles	
		RMSZ	# Z >5	RMSZ	# Z >5
1	A	0.91	1/1034 (0.1%)	0.71	3/1408 (0.2%)
1	C	0.37	0/984	0.47	0/1339
2	B	0.85	0/1330	0.72	7/1799 (0.4%)
2	D	0.59	0/1321	0.51	0/1782
All	All	0.72	1/4669 (0.0%)	0.62	10/6328 (0.2%)

Chiral center outliers are detected by calculating the chiral volume of a chiral center and verifying if the center is modelled as a planar moiety or with the opposite hand. A planarity outlier is detected by checking planarity of atoms in a peptide group, atoms in a mainchain group or atoms of a sidechain that are expected to be planar.

Mol	Chain	#Chirality outliers	#Planarity outliers
1	A	0	2

All (1) bond length outliers are listed below:

Mol	Chain	Res	Type	Atoms	Z	Observed(Å)	Ideal(Å)
1	A	140	PRO	N-CD	5.07	1.54	1.47

All (10) bond angle outliers are listed below:

Mol	Chain	Res	Type	Atoms	Z	Observed(°)	Ideal(°)
2	B	194[A]	ARG	CA-C-O	8.07	137.04	120.10
2	B	194[B]	ARG	CA-C-O	8.07	137.04	120.10
2	B	164	ALA	C-N-CD	5.97	140.95	128.40
2	B	194[A]	ARG	CA-C-N	-5.61	104.86	117.20
2	B	194[B]	ARG	CA-C-N	-5.61	104.86	117.20
1	A	134	GLY	C-N-CD	5.50	139.96	128.40
1	A	135	PRO	CA-N-CD	-5.38	103.96	111.50
1	A	139	TYR	C-N-CD	5.14	139.19	128.40

Continued on next page...

Continued from previous page...

Mol	Chain	Res	Type	Atoms	Z	Observed(°)	Ideal(°)
2	B	194[A]	ARG	N-CA-C	5.08	124.71	111.00
2	B	194[B]	ARG	N-CA-C	5.08	124.71	111.00

There are no chirality outliers.

All (2) planarity outliers are listed below:

Mol	Chain	Res	Type	Group
1	A	138[A]	ARG	Mainchain
1	A	138[B]	ARG	Mainchain

5.2 Too-close contacts [i](#)

In the following table, the Non-H and H(model) columns list the number of non-hydrogen atoms and hydrogen atoms in the chain respectively. The H(added) column lists the number of hydrogen atoms added and optimized by MolProbity. The Clashes column lists the number of clashes within the asymmetric unit, whereas Symm-Clashes lists symmetry-related clashes.

Mol	Chain	Non-H	H(model)	H(added)	Clashes	Symm-Clashes
1	A	990	0	953	8	0
1	C	943	0	916	6	0
2	B	1292	0	1209	2	0
2	D	1287	0	1237	5	0
3	A	24	0	42	1	0
4	A	1	0	0	4	0
4	B	2	0	0	0	0
4	C	1	0	0	0	0
4	D	2	0	0	2	0
5	A	126	0	0	2	0
5	B	96	0	0	1	0
5	C	143	0	0	3	1
5	D	160	0	0	1	1
All	All	5067	0	4357	23	1

The all-atom clashscore is defined as the number of clashes found per 1000 atoms (including hydrogen atoms). The all-atom clashscore for this structure is 3.

All (23) close contacts within the same asymmetric unit are listed below, sorted by their clash magnitude.

Atom-1	Atom-2	Interatomic distance (Å)	Clash overlap (Å)
4:A:304:IOD:I	4:D:302:IOD:I	3.50	0.69

Continued on next page...

Continued from previous page...

Atom-1	Atom-2	Interatomic distance (Å)	Clash overlap (Å)
1:A:188:ARG:HD3	5:A:411:HOH:O	1.93	0.68
1:C:97:GLU:OE1	5:C:465:HOH:O	2.12	0.66
1:A:188:ARG:NH1	5:A:401:HOH:O	2.24	0.63
2:B:221:SER:HB2	2:B:225:GLU:OE1	2.02	0.59
1:A:150:VAL:HG21	1:A:188:ARG:HE	1.66	0.59
1:C:153:GLU:N	1:C:154:PRO:HD2	2.19	0.58
1:A:82:PRO:HD3	4:A:304:IOD:I	2.74	0.57
4:A:304:IOD:I	5:D:435:HOH:O	2.88	0.55
1:A:72:PHE:CD2	1:A:72:PHE:N	2.72	0.55
1:C:153:GLU:O	1:C:154:PRO:C	2.44	0.55
1:C:183:GLU:HG2	5:C:442:HOH:O	2.06	0.54
2:D:209:ASN:ND2	4:D:302:IOD:I	3.06	0.52
4:A:304:IOD:I	2:D:219:THR:OG1	2.82	0.48
1:C:182:LYS:HG2	5:C:496:HOH:O	2.13	0.48
2:D:151:LYS:O	2:D:153:ILE:HG23	2.14	0.48
2:D:126:THR:O	2:D:127:ARG:HB2	2.15	0.47
1:A:72:PHE:N	1:A:72:PHE:HD2	2.14	0.45
2:B:144:GLU:HA	2:B:149:PHE:CD2	2.54	0.43
1:A:113:ILE:HG21	3:A:303:MPD:H11	2.01	0.43
1:A:198:MET:HE2	1:A:198:MET:HB3	1.93	0.42
1:C:152:VAL:HG12	1:C:154:PRO:HG2	2.02	0.42
5:B:457:HOH:O	2:D:232:LYS:HD3	2.20	0.41

All (1) symmetry-related close contacts are listed below. The label for Atom-2 includes the symmetry operator and encoded unit-cell translations to be applied.

Atom-1	Atom-2	Interatomic distance (Å)	Clash overlap (Å)
5:C:409:HOH:O	5:D:416:HOH:O 1_556	2.15	0.05

5.3 Torsion angles [i](#)

5.3.1 Protein backbone [i](#)

In the following table, the Percentiles column shows the percent Ramachandran outliers of the chain as a percentile score with respect to all X-ray entries followed by that with respect to entries of similar resolution.

The Analysed column shows the number of residues for which the backbone conformation was analysed, and the total number of residues.

Mol	Chain	Analysed	Favoured	Allowed	Outliers	Percentiles	
1	A	114/149 (76%)	113 (99%)	1 (1%)	0	100	100
1	C	108/149 (72%)	108 (100%)	0	0	100	100
2	B	164/180 (91%)	162 (99%)	2 (1%)	0	100	100
2	D	158/180 (88%)	156 (99%)	2 (1%)	0	100	100
All	All	544/658 (83%)	539 (99%)	5 (1%)	0	100	100

There are no Ramachandran outliers to report.

5.3.2 Protein sidechains [i](#)

In the following table, the Percentiles column shows the percent sidechain outliers of the chain as a percentile score with respect to all X-ray entries followed by that with respect to entries of similar resolution.

The Analysed column shows the number of residues for which the sidechain conformation was analysed, and the total number of residues.

Mol	Chain	Analysed	Rotameric	Outliers	Percentiles	
1	A	102/132 (77%)	98 (96%)	4 (4%)	32	15
1	C	97/132 (74%)	96 (99%)	1 (1%)	76	69
2	B	132/158 (84%)	131 (99%)	1 (1%)	81	76
2	D	138/158 (87%)	138 (100%)	0	100	100
All	All	469/580 (81%)	463 (99%)	6 (1%)	73	58

All (6) residues with a non-rotameric sidechain are listed below:

Mol	Chain	Res	Type
1	A	72	PHE
1	A	138[A]	ARG
1	A	138[B]	ARG
1	A	187	TRP
2	B	246	MET
1	C	96	LYS

Sometimes sidechains can be flipped to improve hydrogen bonding and reduce clashes. There are no such sidechains identified.

5.3.3 RNA [i](#)

There are no RNA molecules in this entry.

5.4 Non-standard residues in protein, DNA, RNA chains [i](#)

There are no non-standard protein/DNA/RNA residues in this entry.

5.5 Carbohydrates [i](#)

There are no monosaccharides in this entry.

5.6 Ligand geometry [i](#)

Of 9 ligands modelled in this entry, 6 are monoatomic - leaving 3 for Mogul analysis.

In the following table, the Counts columns list the number of bonds (or angles) for which Mogul statistics could be retrieved, the number of bonds (or angles) that are observed in the model and the number of bonds (or angles) that are defined in the Chemical Component Dictionary. The Link column lists molecule types, if any, to which the group is linked. The Z score for a bond length (or angle) is the number of standard deviations the observed value is removed from the expected value. A bond length (or angle) with $|Z| > 2$ is considered an outlier worth inspection. RMSZ is the root-mean-square of all Z scores of the bond lengths (or angles).

Mol	Type	Chain	Res	Link	Bond lengths			Bond angles		
					Counts	RMSZ	$\# Z > 2$	Counts	RMSZ	$\# Z > 2$
3	MPD	A	302	-	7,7,7	0.30	0	9,10,10	0.24	0
3	MPD	A	303	-	7,7,7	0.24	0	9,10,10	0.28	0
3	MPD	A	301	-	7,7,7	0.33	0	9,10,10	0.23	0

In the following table, the Chirals column lists the number of chiral outliers, the number of chiral centers analysed, the number of these observed in the model and the number defined in the Chemical Component Dictionary. Similar counts are reported in the Torsion and Rings columns. '-' means no outliers of that kind were identified.

Mol	Type	Chain	Res	Link	Chirals	Torsions	Rings
3	MPD	A	302	-	-	4/5/5/5	-
3	MPD	A	303	-	-	2/5/5/5	-
3	MPD	A	301	-	-	0/5/5/5	-

There are no bond length outliers.

There are no bond angle outliers.

There are no chirality outliers.

All (6) torsion outliers are listed below:

Mol	Chain	Res	Type	Atoms
3	A	302	MPD	O2-C2-C3-C4
3	A	302	MPD	C1-C2-C3-C4
3	A	302	MPD	CM-C2-C3-C4
3	A	303	MPD	CM-C2-C3-C4
3	A	303	MPD	O2-C2-C3-C4
3	A	302	MPD	C2-C3-C4-C5

There are no ring outliers.

1 monomer is involved in 1 short contact:

Mol	Chain	Res	Type	Clashes	Symm-Clashes
3	A	303	MPD	1	0

5.7 Other polymers [i](#)

There are no such residues in this entry.

5.8 Polymer linkage issues [i](#)

There are no chain breaks in this entry.

6 Fit of model and data [i](#)

6.1 Protein, DNA and RNA chains [i](#)

In the following table, the column labelled ‘#RSRZ> 2’ contains the number (and percentage) of RSRZ outliers, followed by percent RSRZ outliers for the chain as percentile scores relative to all X-ray entries and entries of similar resolution. The OWAB column contains the minimum, median, 95th percentile and maximum values of the occupancy-weighted average B-factor per residue. The column labelled ‘Q< 0.9’ lists the number of (and percentage) of residues with an average occupancy less than 0.9.

Mol	Chain	Analysed	<RSRZ>	#RSRZ>2	OWAB(Å ²)	Q<0.9
1	A	116/149 (77%)	-0.19	3 (2%) 56 54	13, 25, 73, 121	0
1	C	111/149 (74%)	-0.27	0 100 100	14, 23, 55, 99	0
2	B	163/180 (90%)	0.24	12 (7%) 14 14	14, 50, 79, 101	0
2	D	160/180 (88%)	-0.16	6 (3%) 40 38	16, 30, 61, 97	0
All	All	550/658 (83%)	-0.07	21 (3%) 40 38	13, 31, 75, 121	0

All (21) RSRZ outliers are listed below:

Mol	Chain	Res	Type	RSRZ
2	D	247	LEU	6.7
2	D	248	GLU	4.6
1	A	72	PHE	4.5
2	B	246	MET	4.1
2	D	182	GLY	3.8
2	B	166	GLY	3.8
2	D	83	ASP	3.0
2	B	165	PRO	2.9
2	B	243	VAL	2.8
2	D	152	GLY	2.7
2	B	193	PRO	2.7
1	A	161	ASN	2.7
2	B	83	ASP	2.6
2	B	191	TYR	2.5
2	B	169	LEU	2.5
2	B	168	MET	2.4
2	D	246[A]	MET	2.4
2	B	150	PHE	2.3
2	B	148	TRP	2.3
2	B	179	THR	2.2
1	A	208	LYS	2.2

6.2 Non-standard residues in protein, DNA, RNA chains [i](#)

There are no non-standard protein/DNA/RNA residues in this entry.

6.3 Carbohydrates [i](#)

There are no monosaccharides in this entry.

6.4 Ligands [i](#)

In the following table, the Atoms column lists the number of modelled atoms in the group and the number defined in the chemical component dictionary. The B-factors column lists the minimum, median, 95th percentile and maximum values of B factors of atoms in the group. The column labelled 'Q< 0.9' lists the number of atoms with occupancy less than 0.9.

Mol	Type	Chain	Res	Atoms	RSCC	RSR	B-factors(Å ²)	Q<0.9
4	IOD	D	302	1/1	0.71	0.16	36,36,36,36	1
3	MPD	A	302	8/8	0.83	0.37	17,26,39,42	8
4	IOD	A	304	1/1	0.85	0.27	32,32,32,32	1
3	MPD	A	301	8/8	0.93	0.15	25,32,50,51	8
3	MPD	A	303	8/8	0.95	0.17	36,40,48,54	0
4	IOD	B	302	1/1	0.96	0.07	86,86,86,86	1
4	IOD	C	301	1/1	0.96	0.15	48,48,48,48	1
4	IOD	B	301	1/1	0.96	0.05	53,53,53,53	1
4	IOD	D	301	1/1	0.99	0.10	33,33,33,33	1

6.5 Other polymers [i](#)

There are no such residues in this entry.