



# wwPDB EM Validation Summary Report ⓘ

Jun 5, 2023 – 01:53 PM EDT

PDB ID : 7U5E  
EMDB ID : EMD-26349  
Title : I-F3b Cascade-TniQ partial R-loop complex  
Authors : Park, J.U.; Mehrotra, E.; Kellogg, E.H.  
Deposited on : 2022-03-02  
Resolution : 4.03 Å (reported)  
Based on initial model : 6PIF

This is a wwPDB EM Validation Summary Report for a publicly released PDB entry.

We welcome your comments at [validation@mail.wwpdb.org](mailto:validation@mail.wwpdb.org)

A user guide is available at

<https://www.wwpdb.org/validation/2017/EMValidationReportHelp>

with specific help available everywhere you see the ⓘ symbol.

The types of validation reports are described at

<http://www.wwpdb.org/validation/2017/FAQs#types>.

---

The following versions of software and data (see [references ⓘ](#)) were used in the production of this report:

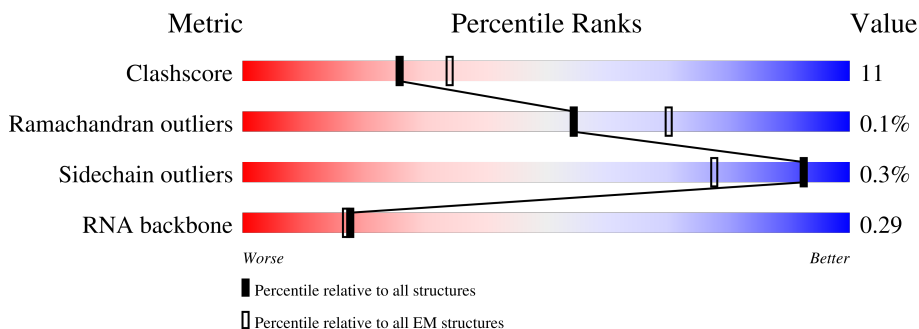
EMDB validation analysis : 0.0.1.dev50  
MolProbity : 4.02b-467  
Percentile statistics : 20191225.v01 (using entries in the PDB archive December 25th 2019)  
MapQ : 1.9.9  
Ideal geometry (proteins) : Engh & Huber (2001)  
Ideal geometry (DNA, RNA) : Parkinson et al. (1996)  
Validation Pipeline (wwPDB-VP) : 2.33

# 1 Overall quality at a glance i

The following experimental techniques were used to determine the structure:  
*ELECTRON MICROSCOPY*

The reported resolution of this entry is 4.03 Å.

Percentile scores (ranging between 0-100) for global validation metrics of the entry are shown in the following graphic. The table shows the number of entries on which the scores are based.








Metric	Whole archive (#Entries)	EM structures (#Entries)
Clashscore	158937	4297
Ramachandran outliers	154571	4023
Sidechain outliers	154315	3826
RNA backbone	4643	859

The table below summarises the geometric issues observed across the polymeric chains and their fit to the map. The red, orange, yellow and green segments of the bar indicate the fraction of residues that contain outliers for  $\geq 3$ , 2, 1 and 0 types of geometric quality criteria respectively. A grey segment represents the fraction of residues that are not modelled. The numeric value for each fraction is indicated below the corresponding segment, with a dot representing fractions  $\leq 5\%$ . The upper red bar (where present) indicates the fraction of residues that have poor fit to the EM map (all-atom inclusion  $< 40\%$ ). The numeric value is given above the bar.

Mol	Chain	Length	Quality of chain
1	1	60	20% (green), 47% (yellow), 33% (orange)
2	2	116	11% (green), 17% (yellow), 72% (grey)
3	3	116	94% (grey), 6% (red)
4	A	704	6% (red), 66% (green), 5% (yellow), 29% (grey)
5	B	347	5% (red), 91% (green), 8% (yellow)
5	C	347	88% (green), 10% (yellow)
5	D	347	87% (green), 12% (yellow)

Continued on next page...

*Continued from previous page...*

Mol	Chain	Length	Quality of chain
5	E	347	 87% 11%
5	F	347	 88% 10%
5	G	347	 79% 8% 14%
6	H	206	 85% 13%
7	I	410	 30% 79% 16% 6%
7	J	410	 21% 82% 9% 9%

## 2 Entry composition [i](#)

There are 7 unique types of molecules in this entry. The entry contains 29651 atoms, of which 0 are hydrogens and 0 are deuteriums.

In the tables below, the AltConf column contains the number of residues with at least one atom in alternate conformation and the Trace column contains the number of residues modelled with at most 2 atoms.

- Molecule 1 is a RNA chain called crRNA.

Mol	Chain	Residues	Atoms					AltConf	Trace
			Total	C	N	O	P		
1	1	60	1285	576	239	411	59	0	0

- Molecule 2 is a DNA chain called Target strand DNA.

Mol	Chain	Residues	Atoms					AltConf	Trace
			Total	C	N	O	P		
2	2	33	670	321	114	202	33	0	0

- Molecule 3 is a DNA chain called Non-target strand DNA.

Mol	Chain	Residues	Atoms					AltConf	Trace
			Total	C	N	O	P		
3	3	7	138	67	20	44	7	0	0

- Molecule 4 is a protein called Cas8/5.

Mol	Chain	Residues	Atoms					AltConf	Trace
			Total	C	N	O	S		
4	A	501	3918	2506	685	709	18	0	0

- Molecule 5 is a protein called Cas7.

Mol	Chain	Residues	Atoms					AltConf	Trace
			Total	C	N	O	S		
5	B	342	2711	1722	467	510	12	0	0
5	C	342	2711	1722	467	510	12	0	0
5	D	342	2711	1722	467	510	12	0	0
5	E	342	2711	1722	467	510	12	0	0

*Continued on next page...*

*Continued from previous page...*

Mol	Chain	Residues	Atoms					AltConf	Trace
5	F	342	Total	C	N	O	S	0	0
			2711	1722	467	510	12		
5	G	300	Total	C	N	O	S	0	0
			2390	1526	410	443	11		

- Molecule 6 is a protein called Cas6.

Mol	Chain	Residues	Atoms					AltConf	Trace
6	H	202	Total	C	N	O	S	0	0
			1631	1032	301	292	6		


- Molecule 7 is a protein called TniQ.

Mol	Chain	Residues	Atoms					AltConf	Trace
7	I	387	Total	C	N	O	S	0	0
			3084	1946	574	548	16		
7	J	374	Total	C	N	O	S	0	0
			2980	1886	548	530	16		

### 3 Residue-property plots [i](#)

These plots are drawn for all protein, RNA, DNA and oligosaccharide chains in the entry. The first graphic for a chain summarises the proportions of the various outlier classes displayed in the second graphic. The second graphic shows the sequence view annotated by issues in geometry and atom inclusion in map density. Residues are color-coded according to the number of geometric quality criteria for which they contain at least one outlier: green = 0, yellow = 1, orange = 2 and red = 3 or more. A red diamond above a residue indicates a poor fit to the EM map for this residue (all-atom inclusion < 40%). Stretches of 2 or more consecutive residues without any outlier are shown as a green connector. Residues present in the sample, but not in the model, are shown in grey.

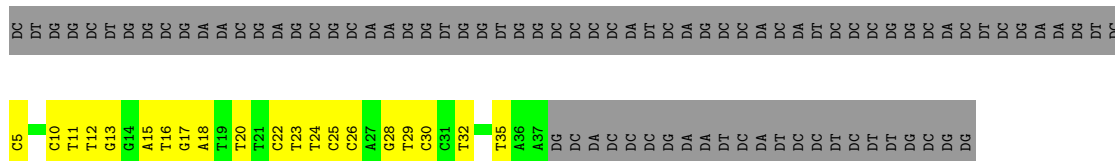
- Molecule 1: crRNA

Chain 1: 



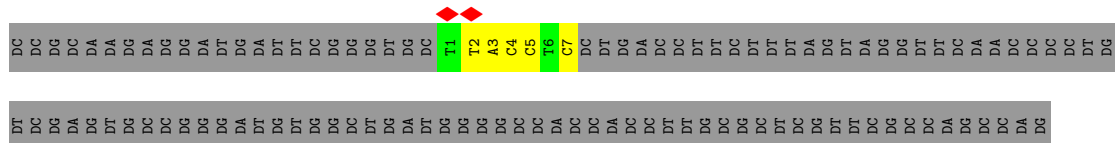
- Molecule 2: Target strand DNA

Chain 2: 



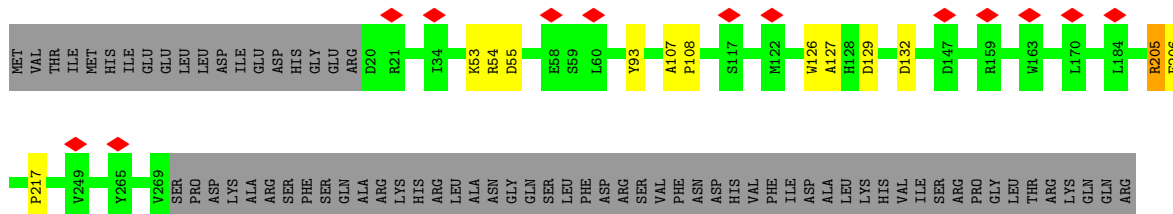
- Molecule 3: Non-target strand DNA

Chain 3: 

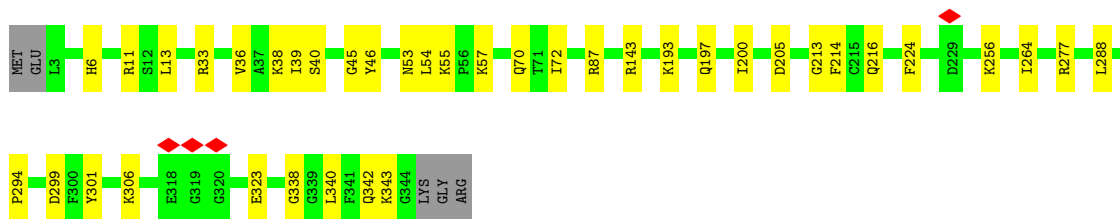


- Molecule 4: Cas8/5

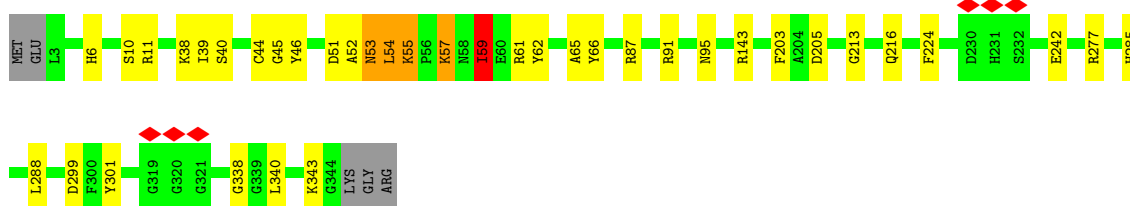
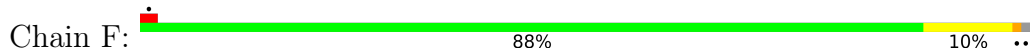
Chain A: 



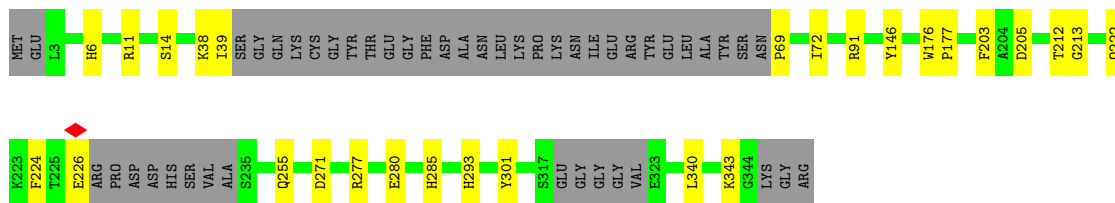
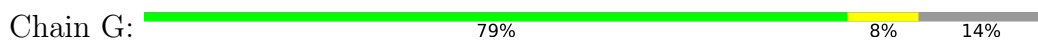




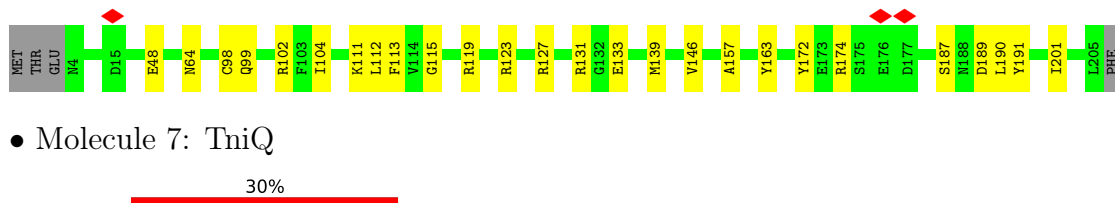
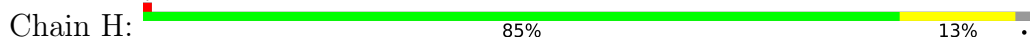
• Molecule 5: Cas7



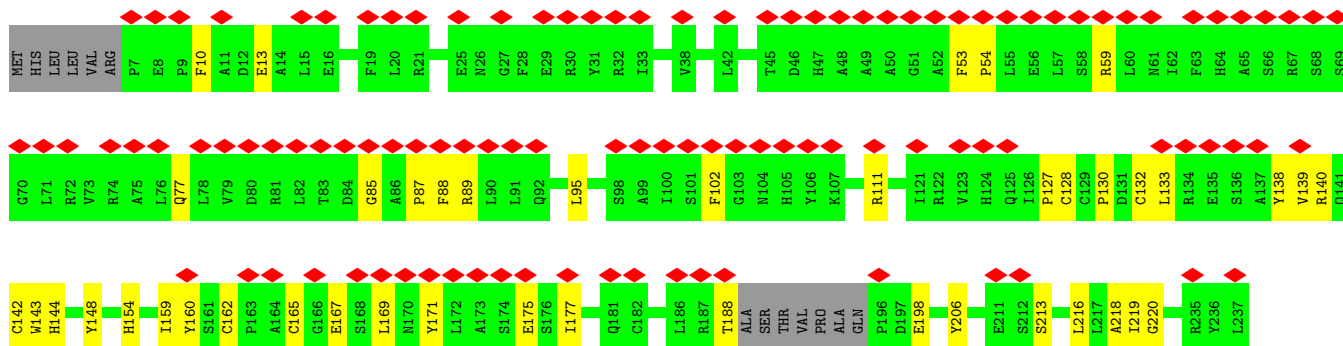
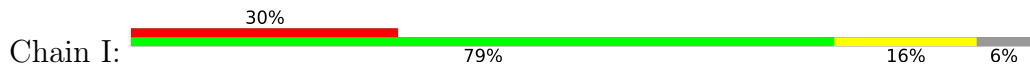
• Molecule 5: Cas7



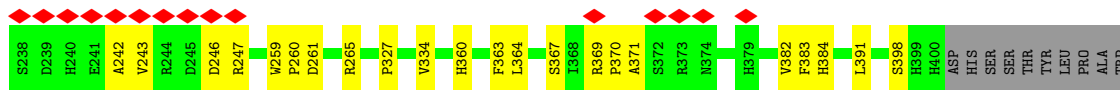
• Molecule 6: Cas6



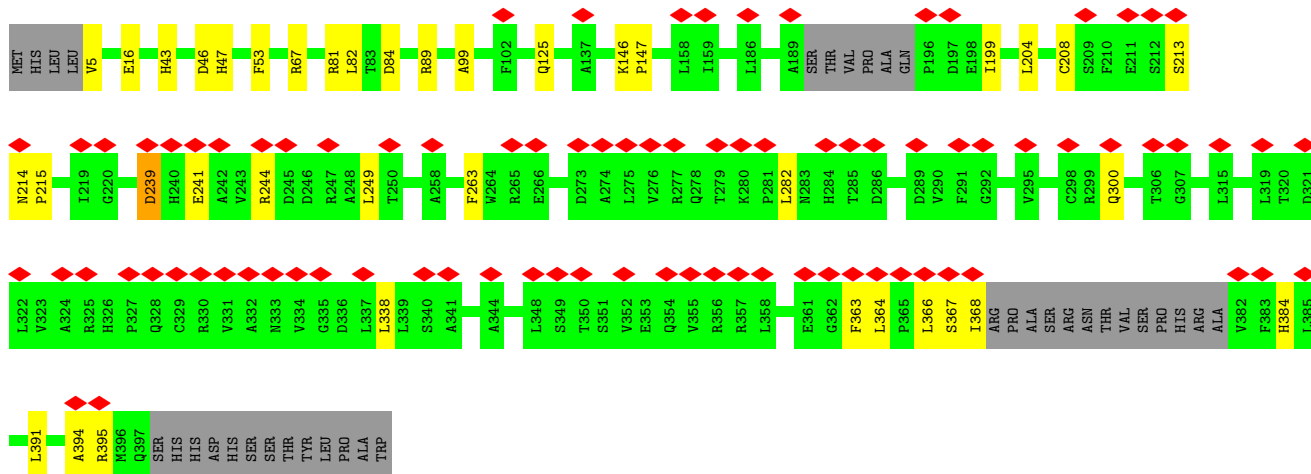
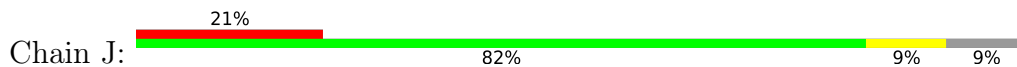
• Molecule 7: TniQ







• Molecule 7: ThiQ



## 4 Experimental information

Property	Value	Source
EM reconstruction method	SINGLE PARTICLE	Depositor
Imposed symmetry	POINT, Not provided	
Number of particles used	34800	Depositor
Resolution determination method	FSC 0.143 CUT-OFF	Depositor
CTF correction method	PHASE FLIPPING AND AMPLITUDE CORRECTION	Depositor
Microscope	FEI TITAN KRIOS	Depositor
Voltage (kV)	300	Depositor
Electron dose ( $e^-/\text{\AA}^2$ )	60	Depositor
Minimum defocus (nm)	1000	Depositor
Maximum defocus (nm)	2500	Depositor
Magnification	Not provided	
Image detector	GATAN K3 BIOQUANTUM (6k x 4k)	Depositor
Maximum map value	0.055	Depositor
Minimum map value	-0.027	Depositor
Average map value	0.000	Depositor
Map value standard deviation	0.001	Depositor
Recommended contour level	0.007	Depositor
Map size (Å)	366.66, 366.66, 366.66	wwPDB
Map dimensions	420, 420, 420	wwPDB
Map angles (°)	90.0, 90.0, 90.0	wwPDB
Pixel spacing (Å)	0.873, 0.873, 0.873	Depositor

## 5 Model quality [i](#)

### 5.1 Standard geometry [i](#)

The Z score for a bond length (or angle) is the number of standard deviations the observed value is removed from the expected value. A bond length (or angle) with  $|Z| > 5$  is considered an outlier worth inspection. RMSZ is the root-mean-square of all Z scores of the bond lengths (or angles).

Mol	Chain	Bond lengths		Bond angles	
		RMSZ	# Z  >5	RMSZ	# Z  >5
1	1	0.27	0/1440	0.78	1/2244 (0.0%)
2	2	0.54	0/748	0.97	0/1151
3	3	0.53	0/152	1.01	0/231
4	A	0.71	0/4015	0.83	4/5465 (0.1%)
5	B	0.81	0/2778	0.72	0/3771
5	C	0.80	0/2778	0.71	0/3771
5	D	0.80	0/2778	0.71	0/3771
5	E	0.79	0/2778	0.71	0/3771
5	F	0.79	0/2778	0.71	0/3771
5	G	0.79	0/2447	0.70	0/3319
6	H	0.64	0/1668	0.61	0/2246
7	I	0.77	0/3164	0.81	3/4292 (0.1%)
7	J	0.79	0/3054	0.79	1/4141 (0.0%)
All	All	0.75	0/30578	0.75	9/41944 (0.0%)

Chiral center outliers are detected by calculating the chiral volume of a chiral center and verifying if the center is modelled as a planar moiety or with the opposite hand. A planarity outlier is detected by checking planarity of atoms in a peptide group, atoms in a mainchain group or atoms of a sidechain that are expected to be planar.

Mol	Chain	#Chirality outliers	#Planarity outliers
4	A	0	1
5	C	0	1
5	D	0	1
5	E	0	1
5	F	0	1
5	G	0	1
All	All	0	6

There are no bond length outliers.

The worst 5 of 9 bond angle outliers are listed below:

Mol	Chain	Res	Type	Atoms	Z	Observed(°)	Ideal(°)
1	1	19	G	O4'-C1'-N9	9.83	116.07	108.20
4	A	127	ALA	CB-CA-C	-7.83	98.35	110.10
7	I	162	CYS	N-CA-C	6.07	127.39	111.00
4	A	127	ALA	N-CA-C	5.91	126.94	111.00
4	A	631	ARG	NE-CZ-NH1	5.62	123.11	120.30

There are no chirality outliers.

5 of 6 planarity outliers are listed below:

Mol	Chain	Res	Type	Group
4	A	93	TYR	Sidechain
5	C	205	ASP	Mainchain
5	D	205	ASP	Mainchain
5	E	205	ASP	Mainchain
5	F	205	ASP	Mainchain

## 5.2 Too-close contacts [i](#)

In the following table, the Non-H and H(model) columns list the number of non-hydrogen atoms and hydrogen atoms in the chain respectively. The H(added) column lists the number of hydrogen atoms added and optimized by MolProbity. The Clashes column lists the number of clashes within the asymmetric unit, whereas Symm-Clashes lists symmetry-related clashes.

Mol	Chain	Non-H	H(model)	H(added)	Clashes	Symm-Clashes
1	1	1285	0	643	193	0
2	2	670	0	371	32	0
3	3	138	0	81	5	0
4	A	3918	0	3909	77	0
5	B	2711	0	2645	60	0
5	C	2711	0	2645	71	0
5	D	2711	0	2643	63	0
5	E	2711	0	2645	79	0
5	F	2711	0	2644	102	0
5	G	2390	0	2346	85	0
6	H	1631	0	1596	74	0
7	I	3084	0	3005	104	0
7	J	2980	0	2907	75	0
All	All	29651	0	28080	650	0

The all-atom clashscore is defined as the number of clashes found per 1000 atoms (including hydrogen atoms). The all-atom clashscore for this structure is 11.

The worst 5 of 650 close contacts within the same asymmetric unit are listed below, sorted by

their clash magnitude.

Atom-1	Atom-2	Interatomic distance (Å)	Clash overlap (Å)
1:1:13:C:C5	5:B:39:ILE:HD12	1.13	1.60
1:1:13:C:C5	5:B:39:ILE:CD1	1.80	1.56
5:F:62:TYR:CE1	7:I:370:PRO:HG2	1.40	1.52
1:1:13:C:H5	5:B:39:ILE:CD1	1.10	1.47
5:G:39:ILE:HD13	6:H:146:VAL:CG2	1.45	1.45

There are no symmetry-related clashes.

## 5.3 Torsion angles [\(i\)](#)

### 5.3.1 Protein backbone [\(i\)](#)

In the following table, the Percentiles column shows the percent Ramachandran outliers of the chain as a percentile score with respect to all PDB entries followed by that with respect to all EM entries.

The Analysed column shows the number of residues for which the backbone conformation was analysed, and the total number of residues.

Mol	Chain	Analysed	Favoured	Allowed	Outliers	Percentiles	
4	A	497/704 (71%)	493 (99%)	4 (1%)	0	100	100
5	B	340/347 (98%)	328 (96%)	12 (4%)	0	100	100
5	C	340/347 (98%)	324 (95%)	16 (5%)	0	100	100
5	D	340/347 (98%)	326 (96%)	14 (4%)	0	100	100
5	E	340/347 (98%)	330 (97%)	10 (3%)	0	100	100
5	F	340/347 (98%)	325 (96%)	13 (4%)	2 (1%)	25	63
5	G	292/347 (84%)	284 (97%)	8 (3%)	0	100	100
6	H	200/206 (97%)	196 (98%)	4 (2%)	0	100	100
7	I	383/410 (93%)	360 (94%)	22 (6%)	1 (0%)	41	75
7	J	368/410 (90%)	359 (98%)	8 (2%)	1 (0%)	41	75
All	All	3440/3812 (90%)	3325 (97%)	111 (3%)	4 (0%)	54	84

All (4) Ramachandran outliers are listed below:

Mol	Chain	Res	Type
5	F	53	ASN

*Continued on next page...*

*Continued from previous page...*

Mol	Chain	Res	Type
5	F	59	ILE
7	I	144	HIS
7	J	208	CYS

### 5.3.2 Protein sidechains [i](#)

In the following table, the Percentiles column shows the percent sidechain outliers of the chain as a percentile score with respect to all PDB entries followed by that with respect to all EM entries.

The Analysed column shows the number of residues for which the sidechain conformation was analysed, and the total number of residues.

Mol	Chain	Analysed	Rotameric	Outliers	Percentiles	
4	A	423/597 (71%)	423 (100%)	0	100	100
5	B	289/293 (99%)	288 (100%)	1 (0%)	92	95
5	C	289/293 (99%)	288 (100%)	1 (0%)	92	95
5	D	289/293 (99%)	288 (100%)	1 (0%)	92	95
5	E	289/293 (99%)	288 (100%)	1 (0%)	92	95
5	F	289/293 (99%)	284 (98%)	5 (2%)	60	78
5	G	256/293 (87%)	255 (100%)	1 (0%)	91	94
6	H	172/176 (98%)	172 (100%)	0	100	100
7	I	331/351 (94%)	331 (100%)	0	100	100
7	J	319/351 (91%)	319 (100%)	0	100	100
All	All	2946/3233 (91%)	2936 (100%)	10 (0%)	92	95

5 of 10 residues with a non-rotameric sidechain are listed below:

Mol	Chain	Res	Type
5	F	59	ILE
5	F	277	ARG
5	G	277	ARG
5	E	277	ARG
5	F	54	LEU

Sometimes sidechains can be flipped to improve hydrogen bonding and reduce clashes. 5 of 12 such sidechains are listed below:

Mol	Chain	Res	Type
5	F	216	GLN
5	F	342	GLN
7	I	77	GLN
5	G	6	HIS
5	D	231	HIS

### 5.3.3 RNA [i](#)

Mol	Chain	Analysed	Backbone Outliers	Pucker Outliers
1	1	59/60 (98%)	28 (47%)	0

5 of 28 RNA backbone outliers are listed below:

Mol	Chain	Res	Type
1	1	3	A
1	1	9	A
1	1	13	C
1	1	14	U
1	1	15	G

There are no RNA pucker outliers to report.

## 5.4 Non-standard residues in protein, DNA, RNA chains [i](#)

There are no non-standard protein/DNA/RNA residues in this entry.

## 5.5 Carbohydrates [i](#)

There are no monosaccharides in this entry.

## 5.6 Ligand geometry [i](#)

There are no ligands in this entry.

## 5.7 Other polymers [i](#)

There are no such residues in this entry.

## 5.8 Polymer linkage issues

There are no chain breaks in this entry.



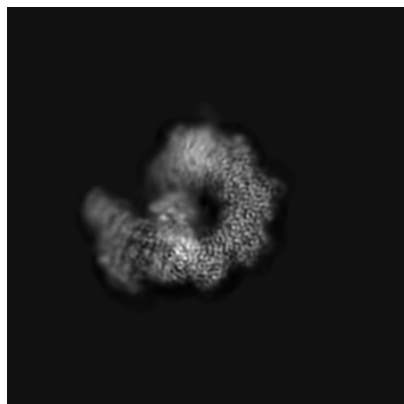
## 6 Map visualisation [i](#)

This section contains visualisations of the EMDB entry EMD-26349. These allow visual inspection of the internal detail of the map and identification of artifacts.

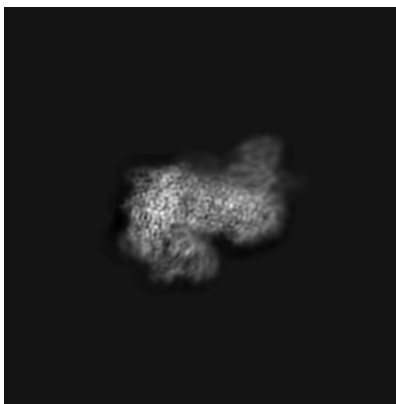
Images derived from a raw map, generated by summing the deposited half-maps, are presented below the corresponding image components of the primary map to allow further visual inspection and comparison with those of the primary map.

### 6.1 Orthogonal projections [i](#)

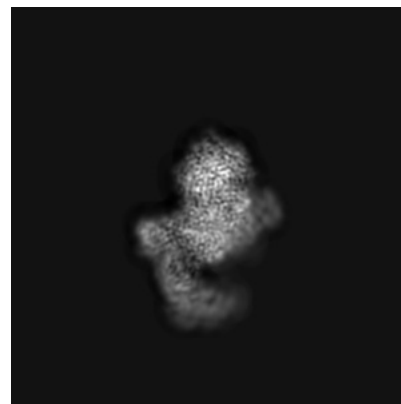
#### 6.1.1 Primary map



X

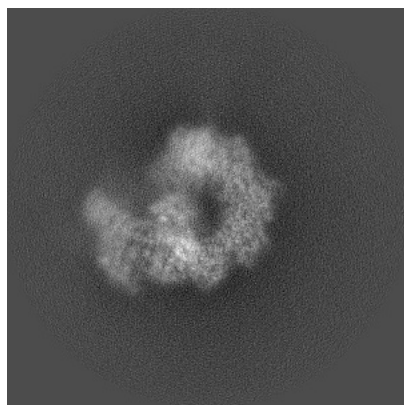


Y

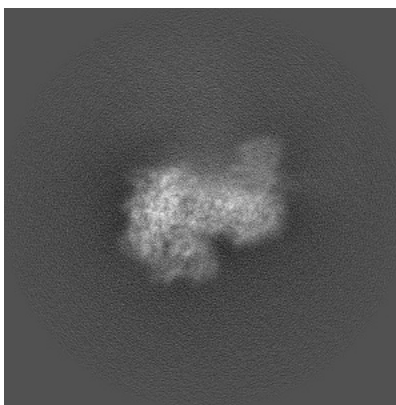


Z

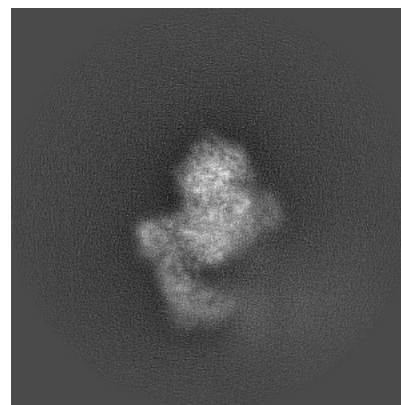
#### 6.1.2 Raw map



X



Y

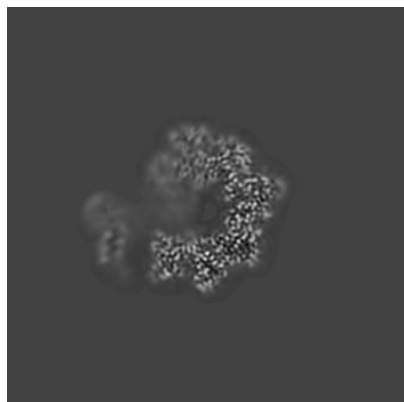


Z

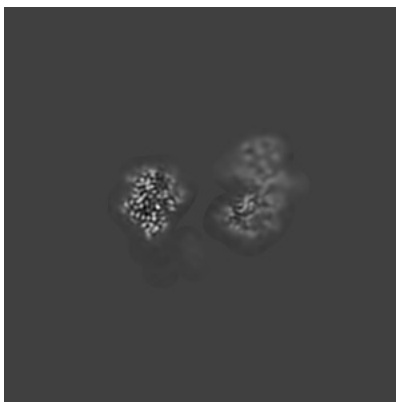
The images above show the map projected in three orthogonal directions.

## 6.2 Central slices [i](#)

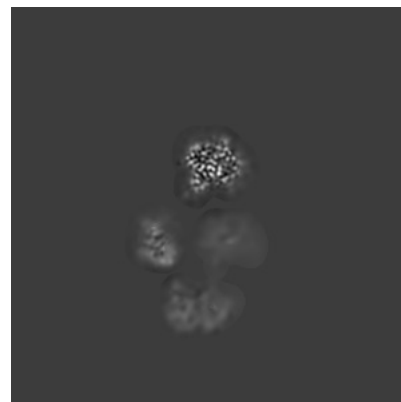
### 6.2.1 Primary map



X Index: 210

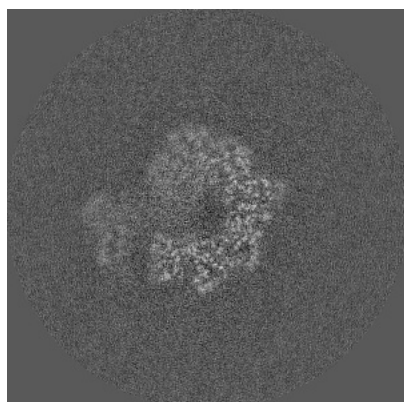


Y Index: 210

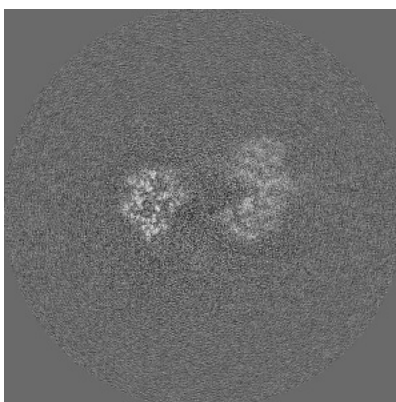


Z Index: 210

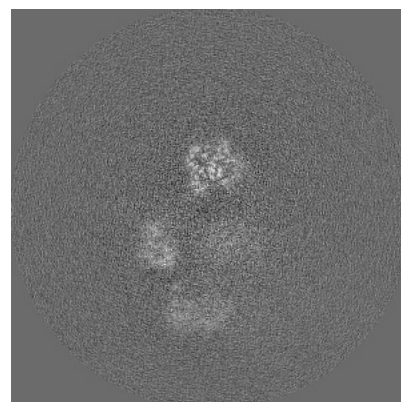
### 6.2.2 Raw map



X Index: 210



Y Index: 210

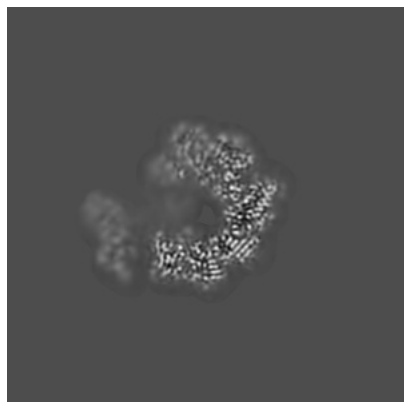


Z Index: 210

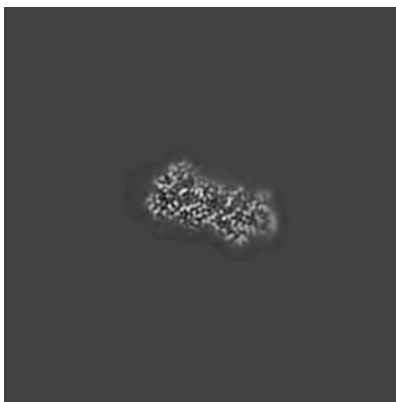
The images above show central slices of the map in three orthogonal directions.

## 6.3 Largest variance slices [i](#)

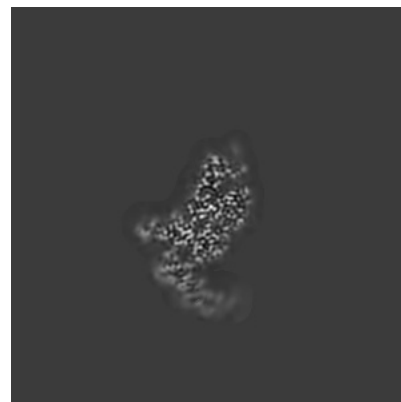
### 6.3.1 Primary map



X Index: 204

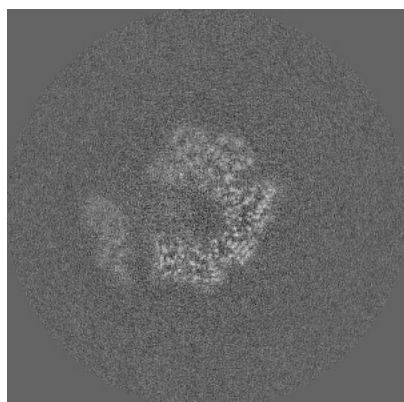


Y Index: 243

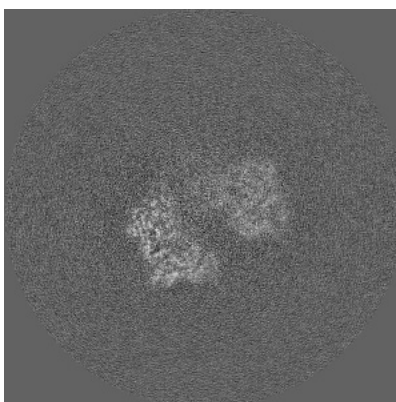


Z Index: 161

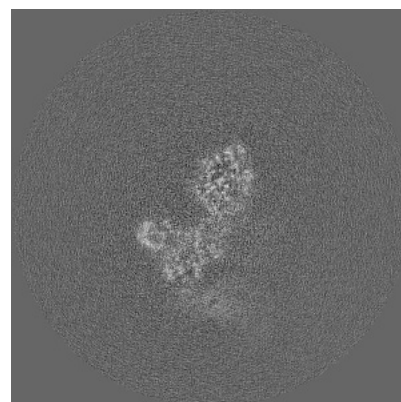
### 6.3.2 Raw map



X Index: 204



Y Index: 183

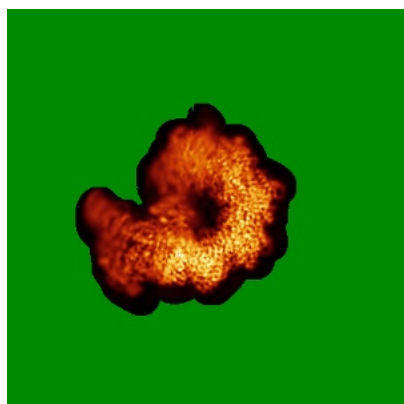


Z Index: 176

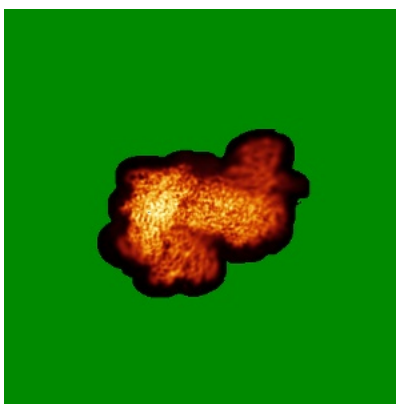
The images above show the largest variance slices of the map in three orthogonal directions.

## 6.4 Orthogonal standard-deviation projections (False-color) [i](#)

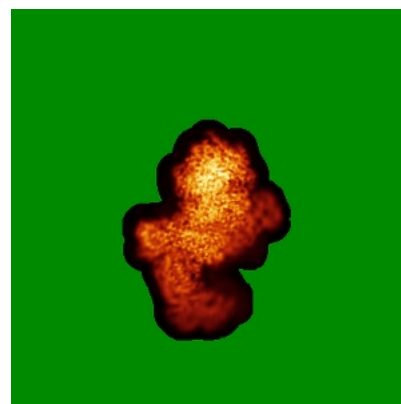
### 6.4.1 Primary map



X

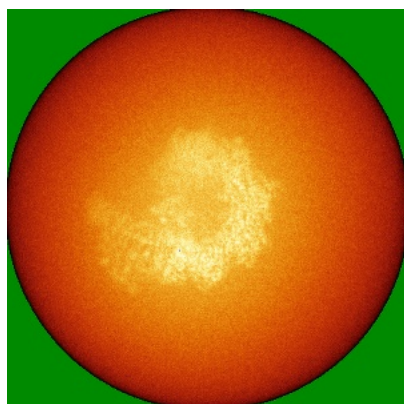


Y

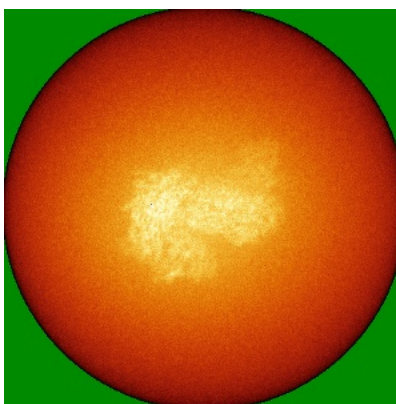


Z

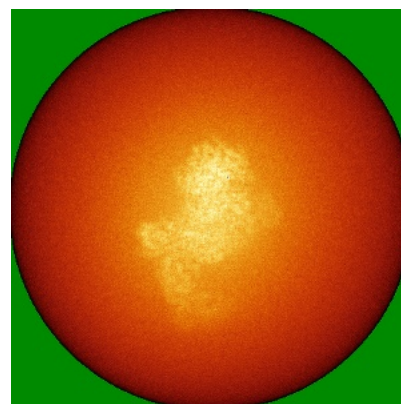
### 6.4.2 Raw map



X



Y

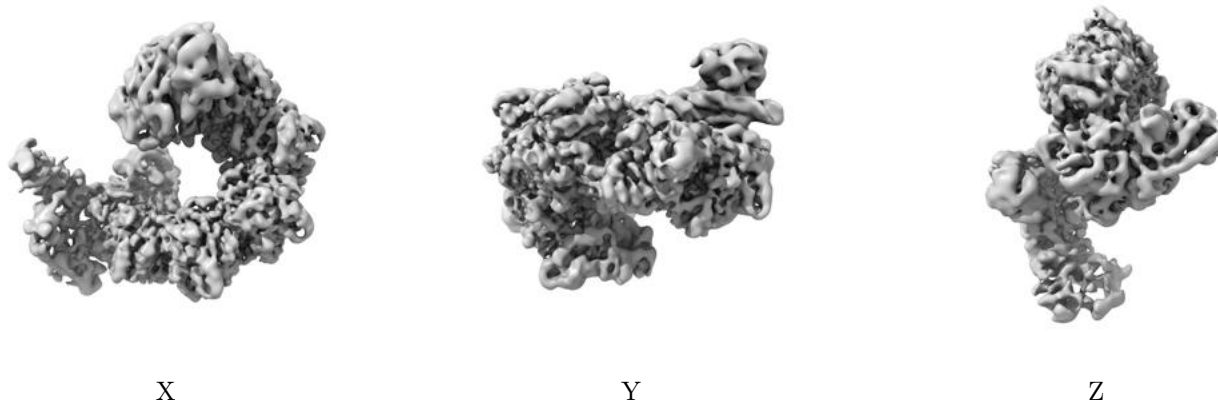


Z

The images above show the map standard deviation projections with false color in three orthogonal directions. Minimum values are shown in green, max in blue, and dark to light orange shades represent small to large values respectively.

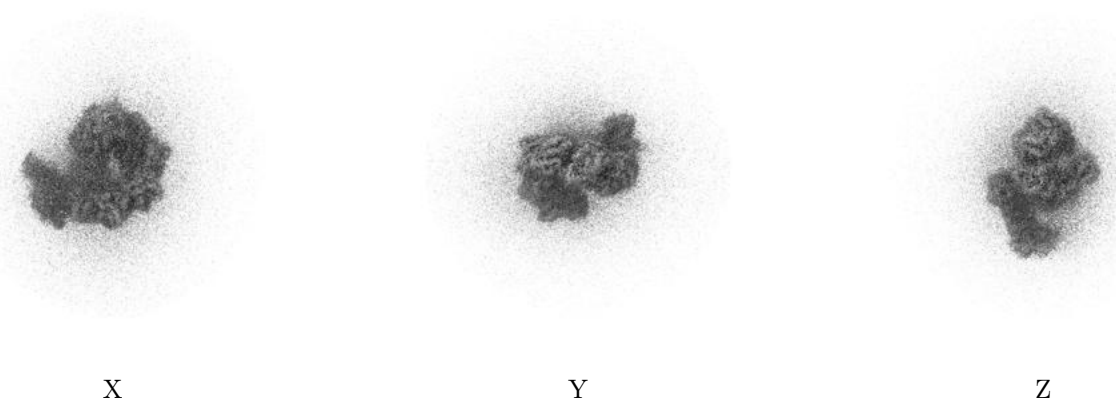
## 6.5 Orthogonal surface views [i](#)

### 6.5.1 Primary map



The images above show the 3D surface view of the map at the recommended contour level 0.007. These images, in conjunction with the slice images, may facilitate assessment of whether an appropriate contour level has been provided.

### 6.5.2 Raw map



These images show the 3D surface of the raw map. The raw map's contour level was selected so that its surface encloses the same volume as the primary map does at its recommended contour level.

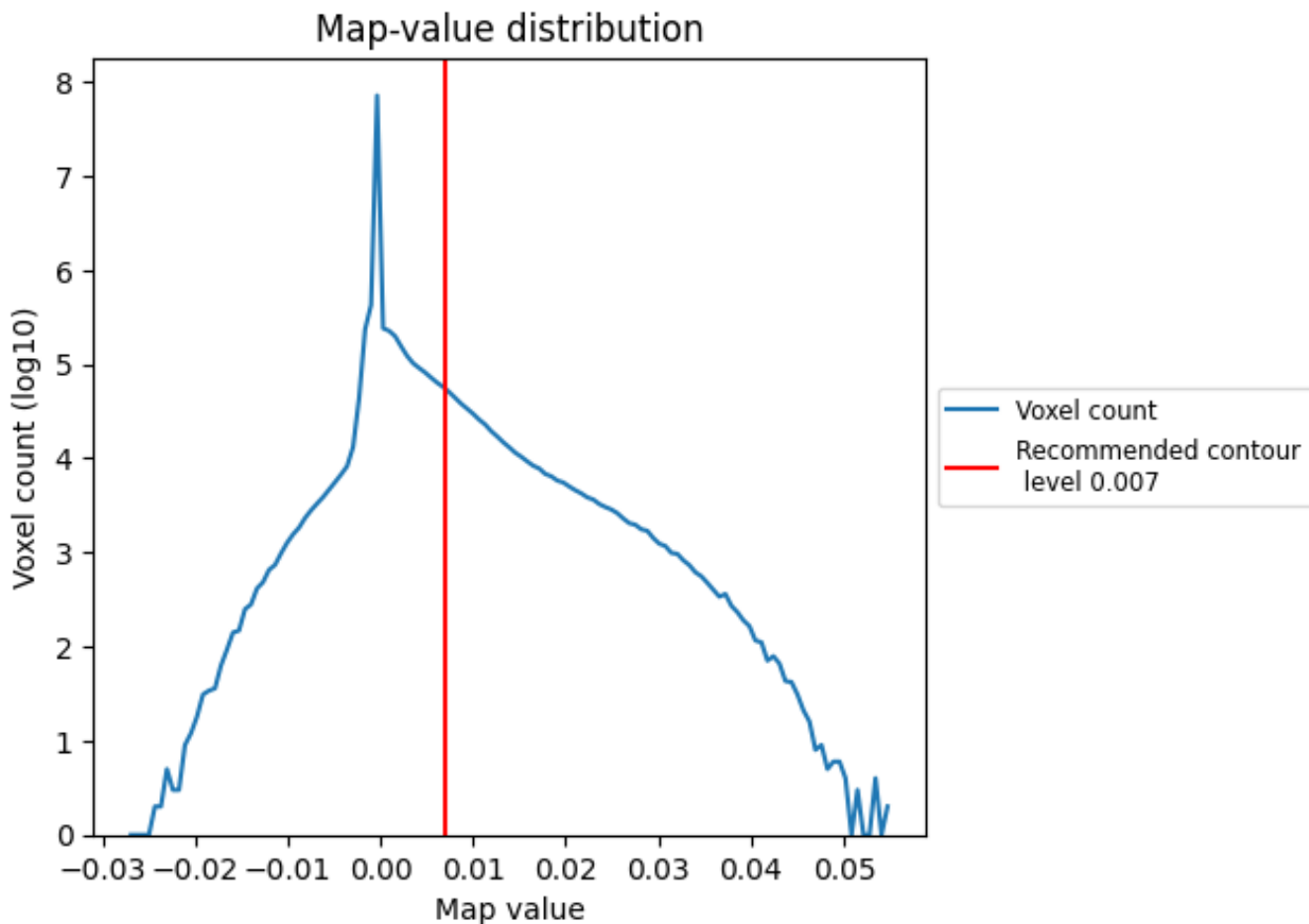
## 6.6 Mask visualisation [i](#)

This section was not generated. No masks/segmentation were deposited.

## 7 Map analysis [i](#)

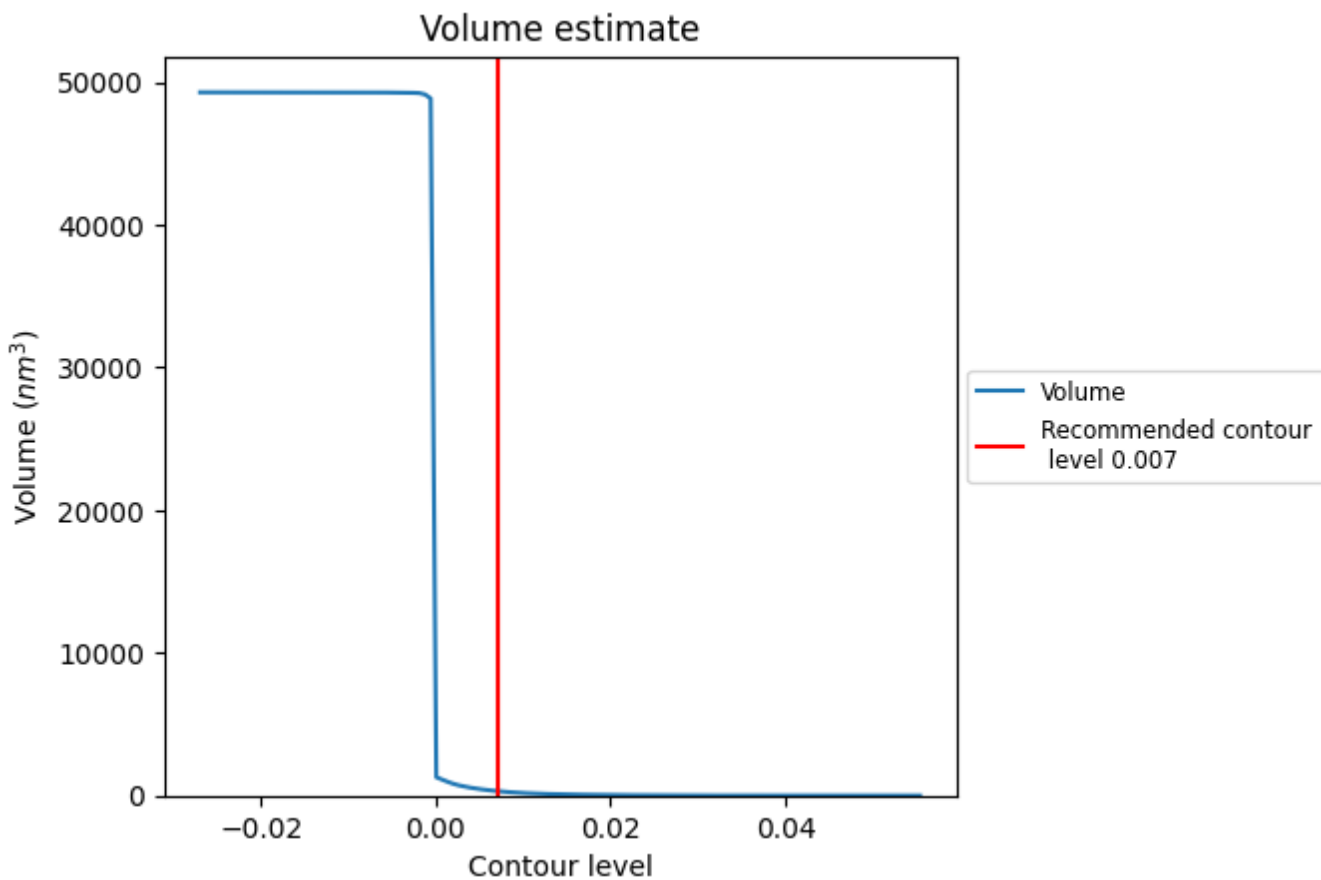
This section contains the results of statistical analysis of the map.

### 7.1 Map-value distribution [i](#)



The map-value distribution is plotted in 128 intervals along the x-axis. The y-axis is logarithmic. A spike in this graph at zero usually indicates that the volume has been masked.

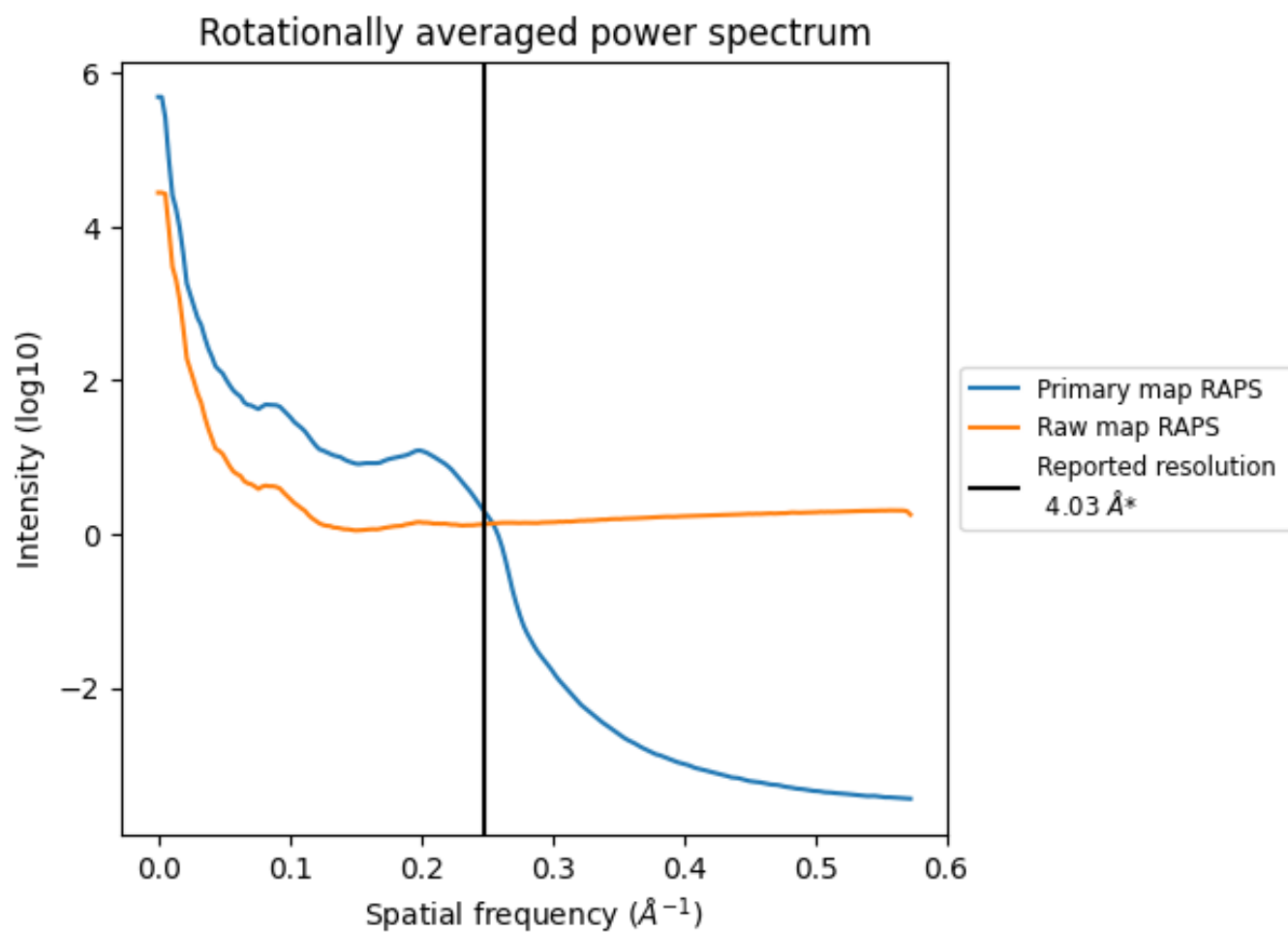
## 7.2 Volume estimate [i](#)



The volume at the recommended contour level is 314 nm<sup>3</sup>; this corresponds to an approximate mass of 283 kDa.

The volume estimate graph shows how the enclosed volume varies with the contour level. The recommended contour level is shown as a vertical line and the intersection between the line and the curve gives the volume of the enclosed surface at the given level.

### 7.3 Rotationally averaged power spectrum [i](#)



\*Reported resolution corresponds to spatial frequency of 0.248 Å<sup>-1</sup>



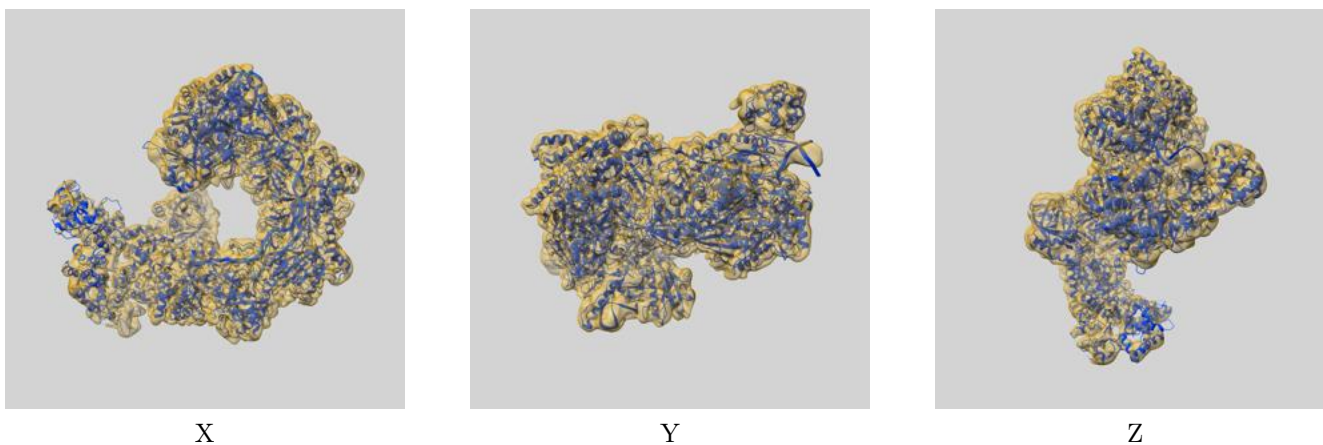
## 8 Fourier-Shell correlation

This section was not generated. No FSC curve or half-maps provided.

## 9 Map-model fit [i](#)

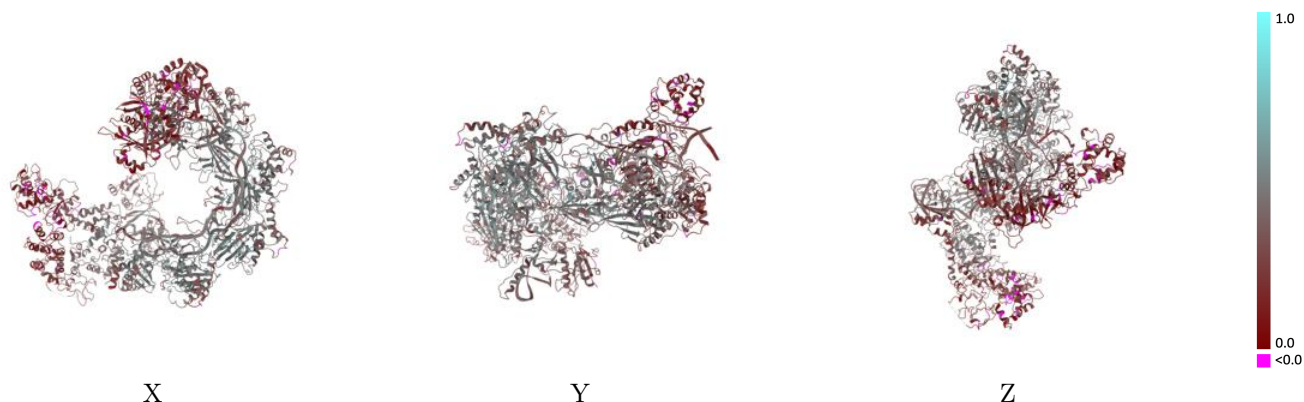
This section contains information regarding the fit between EMDB map EMD-26349 and PDB model 7U5E. Per-residue inclusion information can be found in section 3 on page 6.

### 9.1 Map-model overlay [i](#)



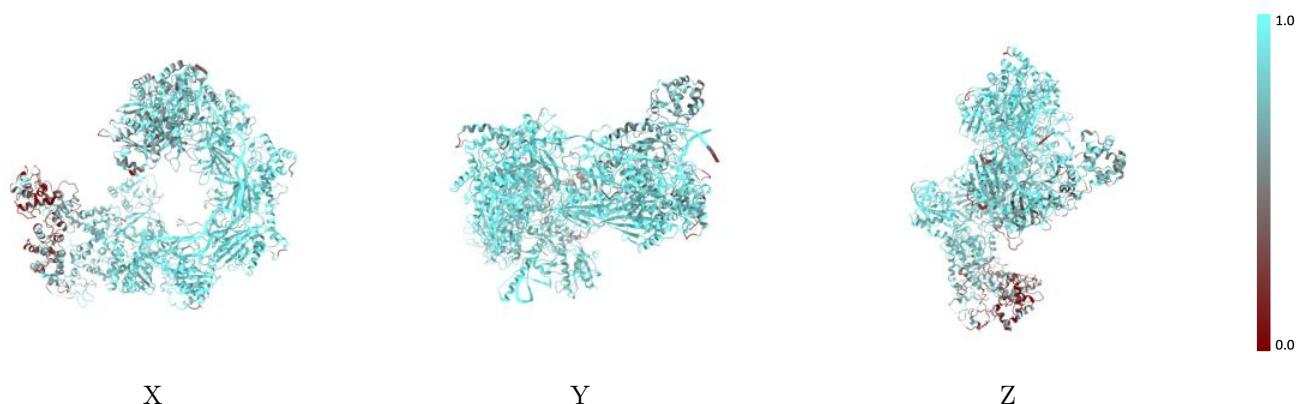
The images above show the 3D surface view of the map at the recommended contour level 0.007 at 50% transparency in yellow overlaid with a ribbon representation of the model coloured in blue. These images allow for the visual assessment of the quality of fit between the atomic model and the map.

## 9.2 Q-score mapped to coordinate model [i](#)



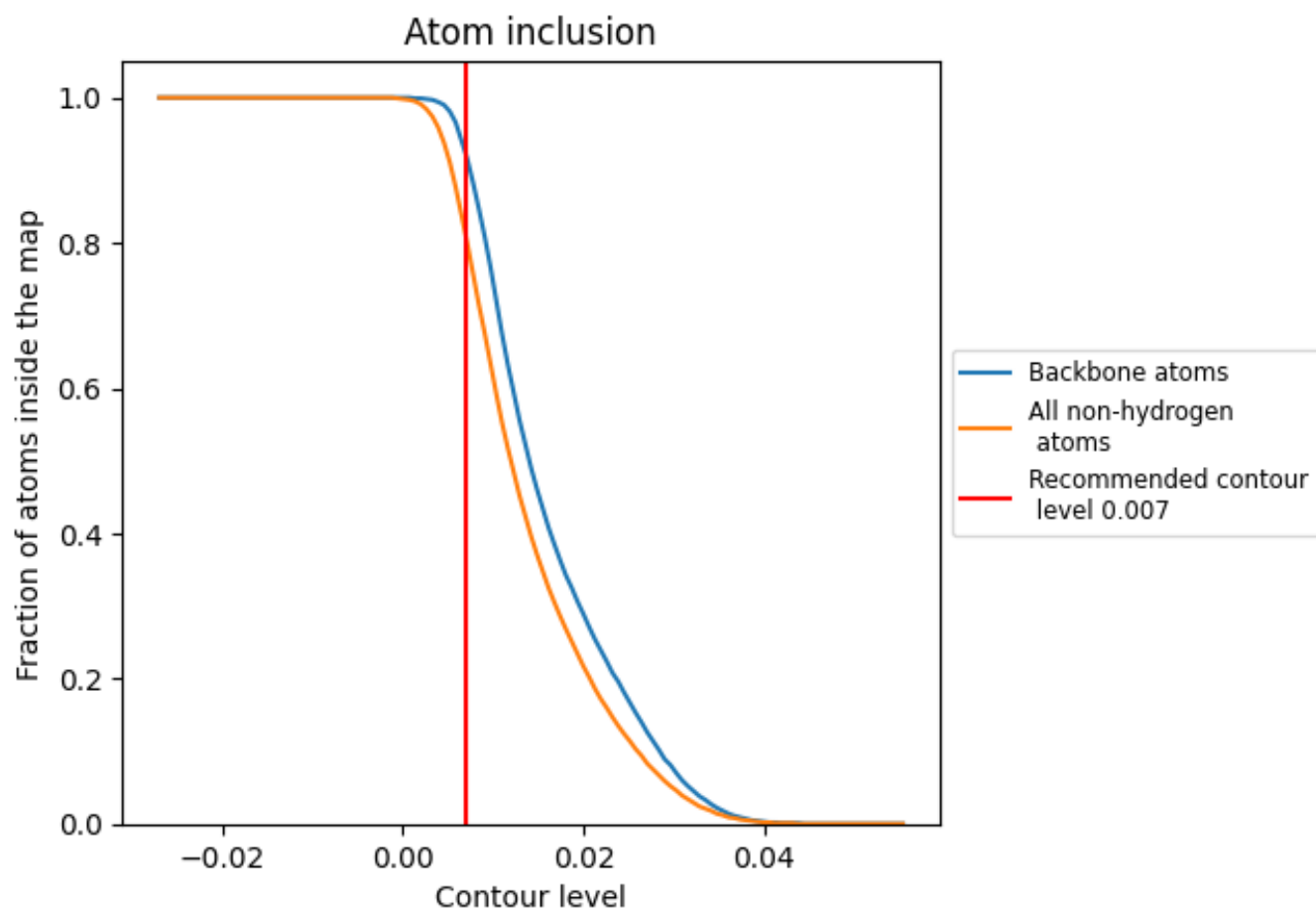
The images above show the model with each residue coloured according its Q-score. This shows their resolvability in the map with higher Q-score values reflecting better resolvability. Please note: Q-score is calculating the resolvability of atoms, and thus high values are only expected at resolutions at which atoms can be resolved. Low Q-score values may therefore be expected for many entries.

## 9.3 Atom inclusion mapped to coordinate model [i](#)



The images above show the model with each residue coloured according to its atom inclusion. This shows to what extent they are inside the map at the recommended contour level (0.007).



























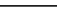
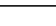
## 9.4 Atom inclusion [i](#)



At the recommended contour level, 92% of all backbone atoms, 81% of all non-hydrogen atoms, are inside the map.

## 9.5 Map-model fit summary

The table lists the average atom inclusion at the recommended contour level (0.007) and Q-score for the entire model and for each chain.

Chain	Atom inclusion	Q-score
All	 0.8100	 0.3510
1	 0.9710	 0.4240
2	 0.9210	 0.3870
3	 0.7390	 0.2500
A	 0.7090	 0.2060
B	 0.8030	 0.3210
C	 0.8990	 0.4240
D	 0.9110	 0.4520
E	 0.9090	 0.4590
F	 0.9020	 0.4530
G	 0.8990	 0.4390
H	 0.8630	 0.3180
I	 0.5770	 0.2520
J	 0.6430	 0.2390

