



Full wwPDB X-ray Structure Validation Report ⓘ

Aug 15, 2023 – 10:13 PM EDT

PDB ID : 1U67
Title : Crystal Structure of Arachidonic Acid Bound to a Mutant of Prostaglandin H Synthase-1 that Forms Predominantly 11-HPETE.
Authors : Harman, C.A.; Rieke, C.J.; Garavito, R.M.; Smith, W.L.
Deposited on : 2004-07-29
Resolution : 3.10 Å(reported)

This is a Full wwPDB X-ray Structure Validation Report for a publicly released PDB entry.

We welcome your comments at validation@mail.wwpdb.org

A user guide is available at

<https://www.wwpdb.org/validation/2017/XrayValidationReportHelp>

with specific help available everywhere you see the ⓘ symbol.

The types of validation reports are described at

<http://www.wwpdb.org/validation/2017/FAQs#types>.

The following versions of software and data (see [references ⓘ](#)) were used in the production of this report:

MolProbity : 4.02b-467
Mogul : 1.8.5 (274361), CSD as541be (2020)
Xtriage (Phenix) : 1.13
EDS : 2.35
buster-report : 1.1.7 (2018)
Percentile statistics : 20191225.v01 (using entries in the PDB archive December 25th 2019)
Refmac : 5.8.0158
CCP4 : 7.0.044 (Gargrove)
Ideal geometry (proteins) : Engh & Huber (2001)
Ideal geometry (DNA, RNA) : Parkinson et al. (1996)
Validation Pipeline (wwPDB-VP) : 2.35

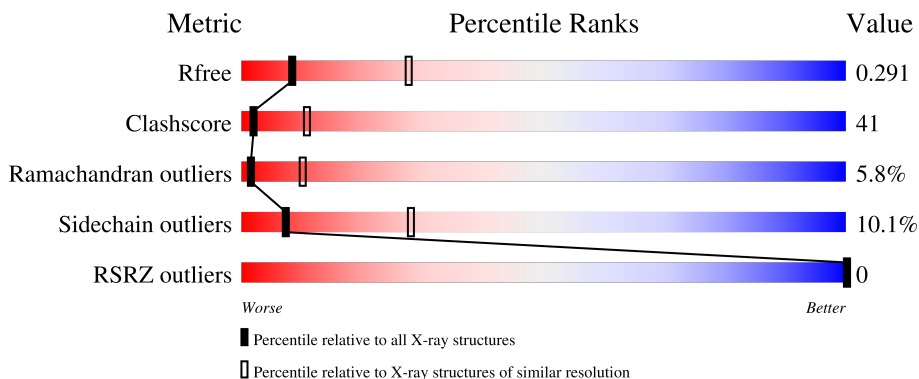
1 Overall quality at a glance i

The following experimental techniques were used to determine the structure:

X-RAY DIFFRACTION

The reported resolution of this entry is 3.10 Å.

Percentile scores (ranging between 0-100) for global validation metrics of the entry are shown in the following graphic. The table shows the number of entries on which the scores are based.



Metric	Whole archive (#Entries)	Similar resolution (#Entries, resolution range(Å))
R_{free}	130704	1094 (3.10-3.10)
Clashscore	141614	1184 (3.10-3.10)
Ramachandran outliers	138981	1141 (3.10-3.10)
Sidechain outliers	138945	1141 (3.10-3.10)
RSRZ outliers	127900	1067 (3.10-3.10)

The table below summarises the geometric issues observed across the polymeric chains and their fit to the electron density. The red, orange, yellow and green segments of the lower bar indicate the fraction of residues that contain outliers for ≥ 3 , 2, 1 and 0 types of geometric quality criteria respectively. A grey segment represents the fraction of residues that are not modelled. The numeric value for each fraction is indicated below the corresponding segment, with a dot representing fractions $\leq 5\%$. The upper red bar (where present) indicates the fraction of residues that have poor fit to the electron density. The numeric value is given above the bar.

Mol	Chain	Length	Quality of chain
1	A	600	 36% 48% 9% 8%
2	B	2	 100%
2	D	2	 100%
3	C	4	 25% 50% 25%

The following table lists non-polymeric compounds, carbohydrate monomers and non-standard

residues in protein, DNA, RNA chains that are outliers for geometric or electron-density-fit criteria:

Mol	Type	Chain	Res	Chirality	Geometry	Clashes	Electron density
4	BOG	A	753	-	-	-	X

2 Entry composition [i](#)

There are 7 unique types of molecules in this entry. The entry contains 4575 atoms, of which 0 are hydrogens and 0 are deuteriums.

In the tables below, the ZeroOcc column contains the number of atoms modelled with zero occupancy, the AltConf column contains the number of residues with at least one atom in alternate conformation and the Trace column contains the number of residues modelled with at most 2 atoms.

- Molecule 1 is a protein called Prostaglandin G/H synthase 1 precursor.

Mol	Chain	Residues	Atoms					ZeroOcc	AltConf	Trace
			Total	C	N	O	S			
1	A	553	4307	2798	723	758	28	0	0	0

There are 3 discrepancies between the modelled and reference sequences:

Chain	Residue	Modelled	Actual	Comment	Reference
A	92	LEU	MET	see remark 999	UNP P05979
A	349	ALA	VAL	engineered mutation	UNP P05979
A	387	PHE	TRP	engineered mutation	UNP P05979

- Molecule 2 is an oligosaccharide called 2-acetamido-2-deoxy-alpha-D-glucopyranose-(1-4)-2-acetamido-2-deoxy-beta-D-glucopyranose.



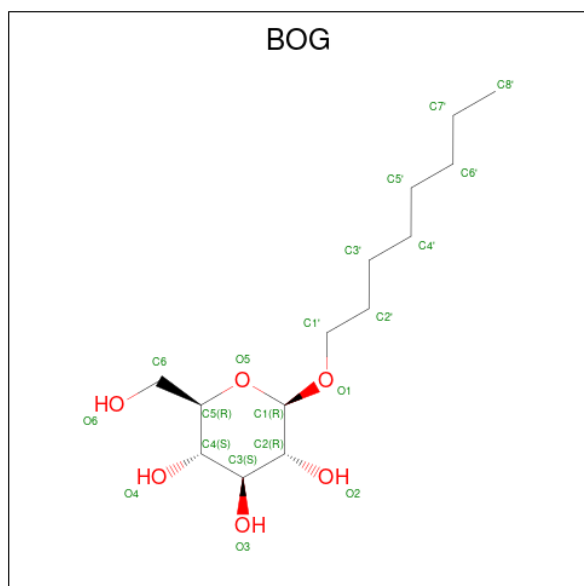
Mol	Chain	Residues	Atoms				ZeroOcc	AltConf	Trace
			Total	C	N	O			
2	B	2	28	16	2	10	0	0	0
2	D	2	28	16	2	10	0	0	0

- Molecule 3 is an oligosaccharide called beta-D-mannopyranose-(1-6)-beta-D-mannopyranose-(1-4)-2-acetamido-2-deoxy-beta-D-glucopyranose-(1-4)-2-acetamido-2-deoxy-beta-D-glucopyranose.



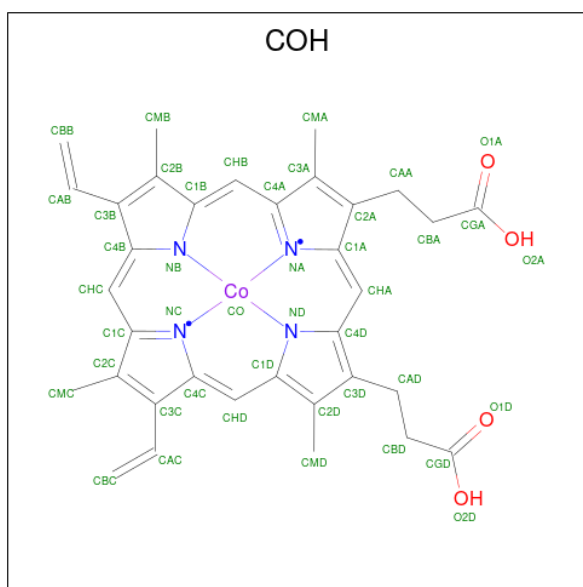
Mol	Chain	Residues	Atoms				ZeroOcc	AltConf	Trace
			Total	C	N	O			
3	C	4	50	28	2	20	0	0	0

- Molecule 4 is octyl beta-D-glucopyranoside (three-letter code: BOG) (formula: $C_{14}H_{28}O_6$).



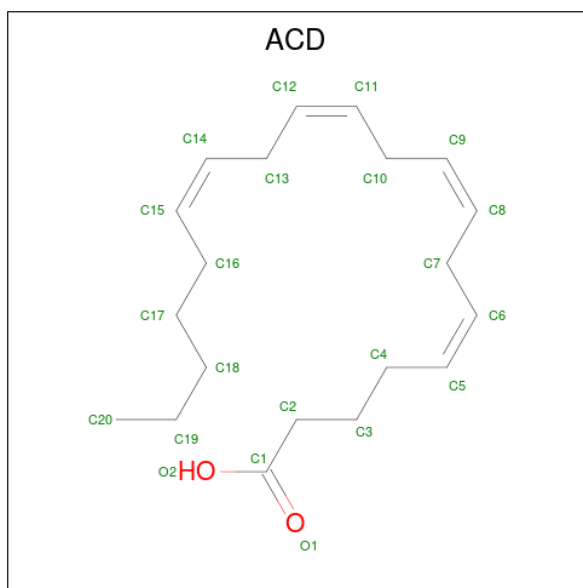
Mol	Chain	Residues	Atoms			ZeroOcc	AltConf
			Total	C	O		
4	A	1	20	14	6	0	0
4	A	1	20	14	6	0	0
4	A	1	20	14	6	0	0
4	A	1	20	14	6	0	0

- Molecule 5 is PROTOPORPHYRIN IX CONTAINING CO (three-letter code: COH) (formula: $C_{34}H_{32}CoN_4O_4$).



Mol	Chain	Residues	Atoms				ZeroOcc	AltConf	
			Total	C	Co	N			O
5	A	1	43	34	1	4	4	0	0

- Molecule 6 is ARACHIDONIC ACID (three-letter code: ACD) (formula: $C_{20}H_{32}O_2$).



Mol	Chain	Residues	Atoms		ZeroOcc	AltConf	
			Total	C			O
6	A	1	15	13	2	0	0

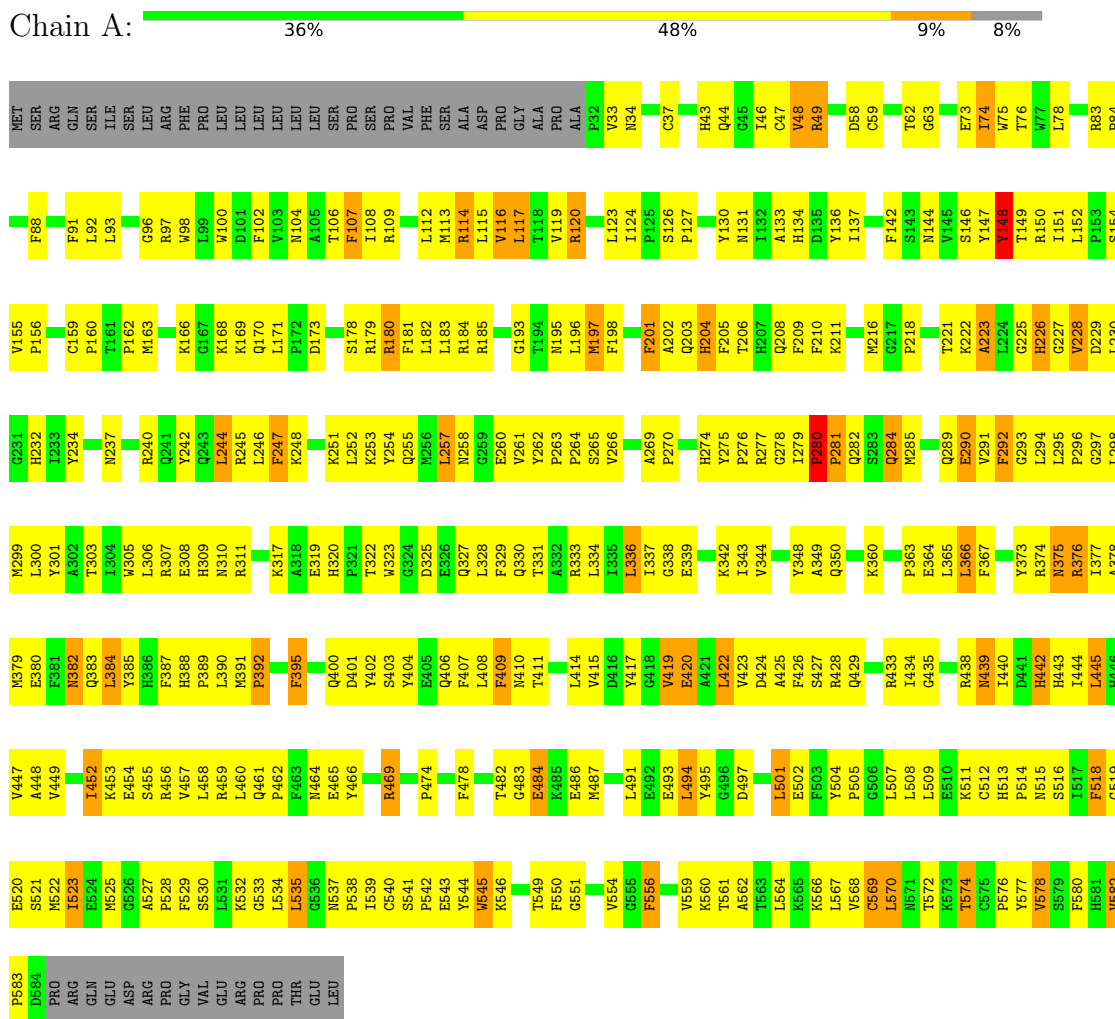
- Molecule 7 is water.

Mol	Chain	Residues	Atoms		ZeroOcc	AltConf
7	A	24	Total 24	O 24	0	0

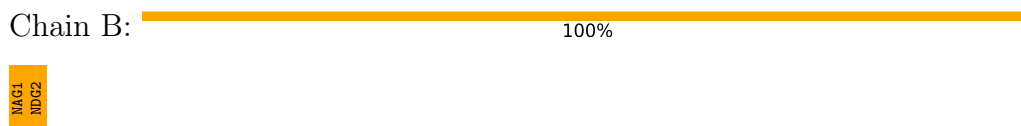
3 Residue-property plots [i](#)

These plots are drawn for all protein, RNA, DNA and oligosaccharide chains in the entry. The first graphic for a chain summarises the proportions of the various outlier classes displayed in the second graphic. The second graphic shows the sequence view annotated by issues in geometry and electron density. Residues are color-coded according to the number of geometric quality criteria for which they contain at least one outlier: green = 0, yellow = 1, orange = 2 and red = 3 or more. A red dot above a residue indicates a poor fit to the electron density ($RSRZ > 2$). Stretches of 2 or more consecutive residues without any outlier are shown as a green connector. Residues present in the sample, but not in the model, are shown in grey.

- Molecule 1: Prostaglandin G/H synthase 1 precursor



- Molecule 2: 2-acetamido-2-deoxy-alpha-D-glucopyranose-(1-4)-2-acetamido-2-deoxy-beta-D-glucopyranose



- Molecule 2: 2-acetamido-2-deoxy-alpha-D-glucopyranose-(1-4)-2-acetamido-2-deoxy-beta-D-glucopyranose

Chain D:  100%

MAG1
MAG2

- Molecule 3: beta-D-mannopyranose-(1-6)-beta-D-mannopyranose-(1-4)-2-acetamido-2-deoxy-beta-D-glucopyranose-(1-4)-2-acetamido-2-deoxy-beta-D-glucopyranose

Chain C:  25% 50% 25%

MAG1
MAG2
BMA3
BMA4

4 Data and refinement statistics

Property	Value	Source
Space group	P 65 2 2	Depositor
Cell constants a, b, c, α , β , γ	181.88Å 181.88Å 103.37Å 90.00° 90.00° 120.00°	Depositor
Resolution (Å)	20.00 – 3.10 20.00 – 3.00	Depositor EDS
% Data completeness (in resolution range)	94.8 (20.00-3.10) 94.1 (20.00-3.00)	Depositor EDS
R_{merge}	(Not available)	Depositor
R_{sym}	0.08	Depositor
$\langle I/\sigma(I) \rangle$ ¹	6.55 (at 2.98Å)	Xtrriage
Refinement program	CNS	Depositor
R, R_{free}	0.238 , 0.311 0.231 , 0.291	Depositor DCC
R_{free} test set	810 reflections (3.93%)	wwPDB-VP
Wilson B-factor (Å ²)	55.6	Xtrriage
Anisotropy	0.140	Xtrriage
Bulk solvent k_{sol} (e/Å ³), B_{sol} (Å ²)	0.25 , 22.0	EDS
L-test for twinning ²	$\langle L \rangle = 0.47$, $\langle L^2 \rangle = 0.29$	Xtrriage
Estimated twinning fraction	No twinning to report.	Xtrriage
F_o, F_c correlation	0.89	EDS
Total number of atoms	4575	wwPDB-VP
Average B, all atoms (Å ²)	39.0	wwPDB-VP

Xtrriage's analysis on translational NCS is as follows: *The largest off-origin peak in the Patterson function is 2.53% of the height of the origin peak. No significant pseudotranslation is detected.*

¹Intensities estimated from amplitudes.

²Theoretical values of $\langle |L| \rangle$, $\langle L^2 \rangle$ for acentric reflections are 0.5, 0.333 respectively for untwinned datasets, and 0.375, 0.2 for perfectly twinned datasets.

5 Model quality [i](#)

5.1 Standard geometry [i](#)

Bond lengths and bond angles in the following residue types are not validated in this section: NAG, BMA, COH, NDG, BOG, ACD

The Z score for a bond length (or angle) is the number of standard deviations the observed value is removed from the expected value. A bond length (or angle) with $|Z| > 5$ is considered an outlier worth inspection. RMSZ is the root-mean-square of all Z scores of the bond lengths (or angles).

Mol	Chain	Bond lengths		Bond angles	
		RMSZ	# Z >5	RMSZ	# Z >5
1	A	0.42	0/4445	0.68	1/6060 (0.0%)

There are no bond length outliers.

All (1) bond angle outliers are listed below:

Mol	Chain	Res	Type	Atoms	Z	Observed(°)	Ideal(°)
1	A	148	TYR	N-CA-C	-5.22	96.90	111.00

There are no chirality outliers.

There are no planarity outliers.

5.2 Too-close contacts [i](#)

In the following table, the Non-H and H(model) columns list the number of non-hydrogen atoms and hydrogen atoms in the chain respectively. The H(added) column lists the number of hydrogen atoms added and optimized by MolProbity. The Clashes column lists the number of clashes within the asymmetric unit, whereas Symm-Clashes lists symmetry-related clashes.

Mol	Chain	Non-H	H(model)	H(added)	Clashes	Symm-Clashes
1	A	4307	0	4015	356	0
2	B	28	0	24	1	0
2	D	28	0	24	0	0
3	C	50	0	43	4	0
4	A	80	0	112	13	0
5	A	43	0	30	4	0
6	A	15	0	16	7	0
7	A	24	0	0	3	0
All	All	4575	0	4264	361	0

The all-atom clashscore is defined as the number of clashes found per 1000 atoms (including hydrogen atoms). The all-atom clashscore for this structure is 41.

All (361) close contacts within the same asymmetric unit are listed below, sorted by their clash magnitude.

Atom-1	Atom-2	Interatomic distance (Å)	Clash overlap (Å)
1:A:512:CYS:HA	1:A:519:GLY:HA2	1.34	1.05
4:A:752:BOG:O6	3:C:1:NAG:H62	1.75	0.85
1:A:156:PRO:HB2	1:A:159:CYS:SG	2.16	0.85
1:A:530:SER:O	1:A:534:LEU:HB2	1.76	0.85
1:A:196:LEU:HD21	1:A:392:PRO:HD3	1.61	0.83
1:A:339:GLU:HG2	1:A:562:ALA:HB2	1.60	0.82
1:A:117:LEU:HD13	1:A:366:LEU:HD21	1.63	0.80
1:A:133:ALA:HB2	4:A:752:BOG:H4	1.62	0.80
1:A:501:LEU:HD23	1:A:502:GLU:H	1.45	0.80
1:A:501:LEU:HD23	1:A:502:GLU:N	1.97	0.80
1:A:234:TYR:CE2	1:A:333:ARG:HG3	2.18	0.79
1:A:504:TYR:CZ	1:A:508:LEU:HD11	2.16	0.79
1:A:391:MET:HG3	5:A:601:COH:HAB	1.65	0.79
1:A:216:MET:HG2	3:C:2:NAG:H82	1.64	0.79
1:A:63:GLY:O	1:A:76:THR:HG21	1.83	0.78
1:A:208:GLN:NE2	1:A:228:VAL:HA	1.99	0.78
1:A:349:ALA:HB1	6:A:700:ACD:C5	2.15	0.77
1:A:73:GLU:H	1:A:76:THR:CG2	1.97	0.77
1:A:339:GLU:O	1:A:343:ILE:HG12	1.84	0.77
1:A:185:ARG:HE	1:A:438:ARG:HD3	1.49	0.76
1:A:383:GLN:NE2	1:A:460:LEU:HD11	2.02	0.74
1:A:116:VAL:O	1:A:120:ARG:HB2	1.87	0.73
1:A:137:ILE:HD12	7:A:816:HOH:O	1.89	0.73
1:A:180:ARG:HA	1:A:180:ARG:HE	1.53	0.71
1:A:116:VAL:HG23	4:A:751:BOG:H2'2	1.72	0.71
1:A:255:GLN:OE1	1:A:257:LEU:HD21	1.90	0.71
1:A:34:ASN:HA	1:A:49:ARG:HH21	1.55	0.71
1:A:512:CYS:HA	1:A:519:GLY:CA	2.19	0.71
1:A:102:PHE:O	1:A:106:THR:HG23	1.89	0.71
1:A:130:TYR:HB3	1:A:134:HIS:O	1.91	0.70
1:A:279:ILE:C	1:A:281:PRO:HD2	2.13	0.69
1:A:230:LEU:HA	1:A:232:HIS:CE1	2.28	0.69
1:A:262:TYR:HB3	1:A:285:MET:HE1	1.75	0.69
1:A:388:HIS:HB3	1:A:444:ILE:HD12	1.72	0.69
1:A:182:LEU:HB3	1:A:440:ILE:HD12	1.73	0.68
1:A:262:TYR:HB3	1:A:285:MET:CE	2.23	0.68
1:A:513:HIS:HB2	1:A:516:SER:CB	2.24	0.68

Continued on next page...

Continued from previous page...

Atom-1	Atom-2	Interatomic distance (Å)	Clash overlap (Å)
1:A:242:TYR:CD2	1:A:247:PHE:HZ	2.11	0.68
1:A:308:GLU:O	1:A:311:ARG:HB3	1.94	0.68
1:A:334:LEU:HA	1:A:337:ILE:HD13	1.75	0.67
1:A:278:GLY:C	1:A:280:PRO:HD3	2.15	0.67
1:A:34:ASN:HA	1:A:49:ARG:NH2	2.09	0.67
1:A:210:PHE:CE1	1:A:382:ASN:HA	2.28	0.67
1:A:124:ILE:HD11	1:A:528:PRO:HB2	1.76	0.67
1:A:150:ARG:NH2	1:A:460:LEU:HD23	2.10	0.67
1:A:275:TYR:CD2	1:A:284:GLN:HG2	2.30	0.66
1:A:183:LEU:HD13	1:A:445:LEU:HD22	1.78	0.66
1:A:300:LEU:O	1:A:303:THR:HB	1.96	0.66
1:A:98:TRP:CE3	4:A:753:BOG:H2	2.31	0.66
1:A:202:ALA:O	1:A:206:THR:HG23	1.95	0.66
1:A:266:VAL:HA	1:A:269:ALA:O	1.96	0.65
1:A:276:PRO:O	1:A:278:GLY:N	2.28	0.65
1:A:349:ALA:HB1	6:A:700:ACD:H5	1.77	0.65
1:A:49:ARG:HH11	1:A:49:ARG:HB3	1.61	0.65
1:A:181:PHE:HB3	1:A:487:MET:HE1	1.79	0.65
1:A:216:MET:HG2	3:C:2:NAG:C8	2.25	0.65
1:A:113:MET:O	1:A:116:VAL:HG12	1.96	0.65
1:A:504:TYR:CE2	1:A:508:LEU:HD11	2.32	0.64
1:A:142:PHE:O	1:A:376:ARG:NH2	2.29	0.64
1:A:424:ASP:HB2	1:A:576:PRO:HB2	1.79	0.64
1:A:521:SER:HB3	1:A:525:MET:CE	2.27	0.64
1:A:478:PHE:CE2	1:A:491:LEU:HB3	2.33	0.64
1:A:556:PHE:CD1	1:A:560:LYS:HE3	2.33	0.64
1:A:294:LEU:HD22	1:A:409:PHE:CD2	2.32	0.64
1:A:208:GLN:NE2	1:A:230:LEU:H	1.94	0.63
1:A:195:ASN:ND2	1:A:427:SER:HA	2.13	0.63
1:A:260:GLU:HB2	1:A:262:TYR:HE1	1.63	0.62
1:A:375:ASN:OD1	1:A:533:GLY:HA3	2.00	0.62
1:A:226:HIS:CE1	1:A:376:ARG:HD2	2.33	0.62
1:A:151:ILE:HD11	1:A:529:PHE:HE2	1.65	0.62
1:A:521:SER:HB3	1:A:525:MET:HE3	1.81	0.61
1:A:384:LEU:C	1:A:384:LEU:HD23	2.20	0.61
1:A:442:HIS:HD2	1:A:443:HIS:H	1.48	0.61
1:A:151:ILE:HD11	1:A:529:PHE:CE2	2.35	0.61
1:A:513:HIS:NE2	1:A:520:GLU:HA	2.15	0.61
1:A:74:ILE:HG23	1:A:75:TRP:H	1.66	0.61
1:A:507:LEU:HD22	1:A:522:MET:HE2	1.82	0.61
1:A:114:ARG:HG3	1:A:365:LEU:O	2.01	0.61

Continued on next page...

Continued from previous page...

Atom-1	Atom-2	Interatomic distance (Å)	Clash overlap (Å)
1:A:344:VAL:HA	1:A:348:TYR:HB3	1.81	0.61
1:A:193:GLY:O	1:A:582:VAL:HG12	2.01	0.60
1:A:230:LEU:HD21	1:A:336:LEU:HB3	1.82	0.60
1:A:258:ASN:HD21	1:A:415:VAL:HG12	1.66	0.60
1:A:204:HIS:CD2	1:A:232:HIS:CD2	2.89	0.60
1:A:289:GLN:HB3	1:A:292:PHE:CD2	2.37	0.60
1:A:196:LEU:HD11	1:A:392:PRO:HG3	1.84	0.60
1:A:245:ARG:HB2	1:A:247:PHE:CE1	2.37	0.60
1:A:252:LEU:HD11	1:A:329:PHE:HE1	1.67	0.59
1:A:323:TRP:CD2	1:A:327:GLN:HG2	2.38	0.59
1:A:568:VAL:HG12	1:A:569:CYS:N	2.16	0.59
1:A:263:PRO:HD2	1:A:285:MET:CE	2.32	0.59
1:A:487:MET:HE2	1:A:509:LEU:HD22	1.85	0.59
1:A:230:LEU:C	1:A:232:HIS:H	2.04	0.59
1:A:298:LEU:N	1:A:298:LEU:HD12	2.17	0.59
1:A:130:TYR:HB2	1:A:150:ARG:HG3	1.84	0.58
1:A:171:LEU:HB3	1:A:456:ARG:NH2	2.18	0.58
1:A:43:HIS:O	1:A:44:GLN:HB2	2.02	0.58
1:A:43:HIS:HA	7:A:810:HOH:O	2.04	0.58
1:A:484:GLU:OE2	1:A:487:MET:N	2.37	0.58
1:A:150:ARG:HH22	1:A:460:LEU:HD23	1.67	0.57
1:A:88:PHE:O	1:A:91:PHE:HB3	2.04	0.57
1:A:91:PHE:CE2	4:A:750:BOG:H3'2	2.40	0.57
1:A:561:THR:HG22	1:A:561:THR:O	2.04	0.57
1:A:373:TYR:CZ	1:A:541:SER:HA	2.40	0.57
1:A:209:PHE:HB2	1:A:377:ILE:HG13	1.86	0.57
1:A:333:ARG:HG2	1:A:337:ILE:HD11	1.87	0.57
1:A:327:GLN:C	1:A:329:PHE:H	2.08	0.57
1:A:117:LEU:CD1	1:A:366:LEU:HD21	2.34	0.57
1:A:178:SER:OG	1:A:449:VAL:HG22	2.05	0.57
1:A:120:ARG:HD3	6:A:700:ACD:O2	2.04	0.56
1:A:209:PHE:HB3	1:A:227:GLY:H	1.70	0.56
1:A:337:ILE:HD12	1:A:337:ILE:N	2.19	0.56
1:A:582:VAL:HG23	1:A:583:PRO:HD2	1.87	0.56
1:A:107:PHE:C	1:A:109:ARG:H	2.07	0.56
1:A:181:PHE:CD2	1:A:487:MET:HE3	2.40	0.56
1:A:274:HIS:HD2	1:A:290:GLU:HB3	1.70	0.56
1:A:380:GLU:OE1	1:A:380:GLU:N	2.30	0.56
1:A:513:HIS:CE1	1:A:520:GLU:HA	2.40	0.56
1:A:100:TRP:O	1:A:104:ASN:HB2	2.05	0.56
1:A:305:TRP:HE3	1:A:336:LEU:HD13	1.70	0.56

Continued on next page...

Continued from previous page...

Atom-1	Atom-2	Interatomic distance (Å)	Clash overlap (Å)
1:A:150:ARG:NH2	1:A:379:MET:SD	2.78	0.56
1:A:299:MET:HG3	1:A:414:LEU:HD23	1.86	0.56
1:A:254:TYR:CD1	1:A:261:VAL:HG13	2.41	0.56
1:A:461:GLN:HB3	1:A:462:PRO:HD2	1.85	0.56
1:A:501:LEU:HD22	1:A:502:GLU:O	2.06	0.56
1:A:112:LEU:HD22	4:A:751:BOG:H6'1	1.88	0.56
1:A:305:TRP:CE3	1:A:336:LEU:HD13	2.40	0.55
1:A:395:PHE:HE1	1:A:404:TYR:CE2	2.24	0.55
1:A:116:VAL:HA	4:A:751:BOG:H2'2	1.86	0.55
1:A:375:ASN:ND2	1:A:376:ARG:H	2.04	0.55
1:A:414:LEU:HD12	1:A:414:LEU:O	2.05	0.55
1:A:73:GLU:N	1:A:76:THR:CG2	2.67	0.55
1:A:116:VAL:HG23	4:A:751:BOG:C2'	2.36	0.55
4:A:752:BOG:O6	3:C:1:NAG:C6	2.52	0.55
1:A:338:GLY:HA3	1:A:559:VAL:HG13	1.89	0.55
1:A:344:VAL:O	1:A:348:TYR:HB3	2.07	0.55
1:A:507:LEU:HB3	1:A:522:MET:HE1	1.89	0.55
1:A:114:ARG:HG3	1:A:114:ARG:HH11	1.71	0.55
1:A:204:HIS:CD2	1:A:232:HIS:HD2	2.25	0.54
1:A:96:GLY:O	1:A:97:ARG:C	2.45	0.54
1:A:564:LEU:HD22	1:A:578:VAL:CG2	2.37	0.54
1:A:74:ILE:HG23	1:A:75:TRP:N	2.20	0.54
1:A:388:HIS:N	1:A:389:PRO:HD2	2.22	0.54
1:A:444:ILE:O	1:A:447:VAL:HG23	2.07	0.54
1:A:107:PHE:C	1:A:109:ARG:N	2.60	0.54
1:A:390:LEU:HD21	1:A:434:ILE:HD11	1.89	0.54
1:A:319:GLU:HB3	1:A:320:HIS:ND1	2.23	0.54
1:A:196:LEU:HD11	1:A:429:GLN:NE2	2.23	0.54
1:A:289:GLN:HG2	1:A:292:PHE:CE1	2.43	0.54
1:A:408:LEU:O	1:A:410:ASN:N	2.41	0.54
1:A:501:LEU:CD2	1:A:502:GLU:N	2.67	0.54
1:A:150:ARG:NH1	1:A:154:SER:HA	2.22	0.54
1:A:222:LYS:NZ	1:A:222:LYS:HB3	2.22	0.53
1:A:387:PHE:HB3	1:A:390:LEU:HG	1.90	0.53
1:A:163:MET:HG2	1:A:171:LEU:HD21	1.89	0.53
1:A:523:ILE:CG2	6:A:700:ACD:H8	2.39	0.53
1:A:395:PHE:CD1	1:A:395:PHE:N	2.77	0.53
1:A:442:HIS:NE2	1:A:443:HIS:CE1	2.76	0.53
1:A:208:GLN:HB3	1:A:232:HIS:ND1	2.24	0.53
1:A:204:HIS:NE2	1:A:232:HIS:CD2	2.77	0.53
1:A:299:MET:HG3	1:A:414:LEU:CD2	2.39	0.53

Continued on next page...

Continued from previous page...

Atom-1	Atom-2	Interatomic distance (Å)	Clash overlap (Å)
1:A:178:SER:CB	1:A:449:VAL:HG22	2.39	0.53
1:A:251:LYS:HB3	1:A:310:ASN:OD1	2.08	0.53
1:A:294:LEU:O	1:A:295:LEU:HG	2.09	0.52
1:A:380:GLU:HG2	1:A:466:TYR:CE1	2.44	0.52
1:A:458:LEU:O	1:A:459:ARG:HB2	2.09	0.52
1:A:280:PRO:N	1:A:281:PRO:HD2	2.25	0.52
1:A:408:LEU:C	1:A:410:ASN:H	2.13	0.52
1:A:514:PRO:O	1:A:515:ASN:HB2	2.10	0.52
1:A:183:LEU:CD1	1:A:445:LEU:HD22	2.40	0.52
1:A:384:LEU:HD23	1:A:384:LEU:O	2.10	0.52
1:A:197:MET:HB2	1:A:427:SER:HA	1.91	0.52
1:A:88:PHE:CZ	1:A:92:LEU:HD11	2.44	0.52
1:A:148:TYR:CE1	1:A:221:THR:HB	2.45	0.52
1:A:495:TYR:CE2	1:A:502:GLU:HG3	2.45	0.52
1:A:433:ARG:HD3	1:A:435:GLY:O	2.10	0.51
1:A:442:HIS:CD2	1:A:443:HIS:N	2.79	0.51
1:A:230:LEU:CD2	1:A:336:LEU:HB3	2.40	0.51
1:A:295:LEU:HD11	5:A:601:COH:HBB1	1.91	0.51
1:A:297:GLY:O	1:A:300:LEU:HB3	2.11	0.51
1:A:564:LEU:HD23	1:A:564:LEU:O	2.11	0.51
1:A:566:LYS:O	1:A:570:LEU:HB2	2.10	0.51
1:A:403:SER:H	1:A:406:GLN:CG	2.24	0.51
1:A:442:HIS:HE2	1:A:443:HIS:CE1	2.28	0.51
1:A:464:ASN:ND2	1:A:474:PRO:HB2	2.26	0.51
1:A:150:ARG:NH1	1:A:154:SER:OG	2.43	0.51
1:A:292:PHE:CD1	1:A:298:LEU:HB3	2.46	0.51
1:A:296:PRO:HD2	1:A:407:PHE:CZ	2.46	0.51
1:A:329:PHE:HD2	1:A:330:GLN:NE2	2.09	0.51
1:A:582:VAL:HG22	1:A:583:PRO:O	2.11	0.51
1:A:34:ASN:HB3	1:A:37:CYS:SG	2.50	0.51
1:A:201:PHE:CD2	1:A:201:PHE:C	2.84	0.51
1:A:204:HIS:HE2	1:A:232:HIS:CD2	2.29	0.51
1:A:453:LYS:O	1:A:457:VAL:HG23	2.11	0.50
1:A:298:LEU:N	1:A:298:LEU:CD1	2.74	0.50
1:A:379:MET:O	1:A:382:ASN:HB3	2.12	0.50
1:A:183:LEU:HD13	1:A:445:LEU:CD2	2.40	0.50
1:A:197:MET:HG3	1:A:427:SER:OG	2.12	0.50
1:A:245:ARG:NH2	1:A:325:ASP:OD2	2.44	0.50
1:A:442:HIS:HD2	1:A:443:HIS:N	2.09	0.50
1:A:112:LEU:O	1:A:115:LEU:N	2.44	0.50
1:A:274:HIS:CD2	1:A:290:GLU:HB3	2.47	0.50

Continued on next page...

Continued from previous page...

Atom-1	Atom-2	Interatomic distance (Å)	Clash overlap (Å)
1:A:493:GLU:O	1:A:494:LEU:HG	2.12	0.49
1:A:380:GLU:HG2	1:A:466:TYR:CZ	2.47	0.49
1:A:422:LEU:HD13	1:A:426:PHE:CE2	2.46	0.49
1:A:550:PHE:CE2	1:A:559:VAL:HG21	2.46	0.49
1:A:298:LEU:CD1	1:A:298:LEU:H	2.26	0.49
1:A:323:TRP:CE3	1:A:327:GLN:HG2	2.47	0.49
1:A:109:ARG:NH2	1:A:360:LYS:HB2	2.28	0.49
1:A:263:PRO:HD2	1:A:285:MET:HE2	1.94	0.49
1:A:383:GLN:OE1	1:A:455:SER:HB2	2.13	0.49
1:A:123:LEU:O	1:A:469:ARG:NH2	2.46	0.49
1:A:131:ASN:OD1	1:A:134:HIS:N	2.45	0.49
1:A:98:TRP:HB2	4:A:753:BOG:O2	2.12	0.49
1:A:166:LYS:HE3	1:A:497:ASP:OD1	2.12	0.49
1:A:203:GLN:HB2	5:A:601:COH:HMC3	1.94	0.49
1:A:230:LEU:HA	1:A:232:HIS:ND1	2.27	0.49
1:A:107:PHE:H	1:A:107:PHE:HD2	1.61	0.49
1:A:334:LEU:CA	1:A:337:ILE:HD13	2.41	0.49
1:A:549:THR:HG22	1:A:549:THR:O	2.13	0.49
1:A:338:GLY:CA	1:A:559:VAL:HG13	2.41	0.49
1:A:537:ASN:OD1	1:A:539:ILE:HG12	2.13	0.48
1:A:204:HIS:ND1	1:A:301:TYR:HB3	2.29	0.48
1:A:98:TRP:HE3	4:A:753:BOG:H2	1.73	0.48
1:A:204:HIS:NE2	1:A:232:HIS:HD2	2.11	0.48
1:A:179:ARG:HA	1:A:183:LEU:HB2	1.96	0.48
1:A:163:MET:CE	1:A:502:GLU:HG2	2.43	0.48
1:A:541:SER:HB2	1:A:542:PRO:HD2	1.96	0.48
1:A:282:GLN:C	1:A:284:GLN:H	2.17	0.48
1:A:511:LYS:O	1:A:511:LYS:HG3	2.14	0.48
1:A:535:LEU:HD13	1:A:540:CYS:SG	2.54	0.48
1:A:163:MET:HE2	1:A:502:GLU:HG2	1.96	0.48
1:A:294:LEU:HD22	1:A:409:PHE:CE2	2.49	0.47
1:A:383:GLN:NE2	1:A:460:LEU:CD1	2.74	0.47
1:A:107:PHE:O	1:A:109:ARG:N	2.48	0.47
1:A:47:CYS:O	1:A:48:VAL:HG13	2.13	0.47
1:A:242:TYR:CD2	1:A:247:PHE:CZ	2.99	0.47
1:A:152:LEU:HD21	1:A:469:ARG:HG3	1.96	0.47
1:A:168:LYS:C	1:A:170:GLN:H	2.17	0.47
1:A:171:LEU:HB3	1:A:456:ARG:HH21	1.79	0.47
1:A:149:THR:O	1:A:378:ALA:HA	2.14	0.47
1:A:237:ASN:ND2	1:A:240:ARG:H	2.12	0.47
1:A:246:LEU:HG	1:A:246:LEU:O	2.14	0.47

Continued on next page...

Continued from previous page...

Atom-1	Atom-2	Interatomic distance (Å)	Clash overlap (Å)
1:A:333:ARG:O	1:A:336:LEU:N	2.38	0.47
1:A:543:GLU:O	1:A:546:LYS:HE3	2.15	0.47
1:A:568:VAL:O	1:A:572:THR:HG23	2.15	0.47
1:A:152:LEU:HD12	1:A:466:TYR:CZ	2.50	0.47
1:A:201:PHE:C	1:A:201:PHE:HD2	2.18	0.47
1:A:180:ARG:HA	1:A:180:ARG:NE	2.26	0.47
1:A:131:ASN:HB2	1:A:147:TYR:CD1	2.49	0.47
1:A:75:TRP:CE3	1:A:78:LEU:HD12	2.50	0.47
1:A:197:MET:SD	1:A:301:TYR:OH	2.73	0.47
1:A:538:PRO:HB2	1:A:544:TYR:CE1	2.50	0.46
1:A:184:ARG:HH12	1:A:392:PRO:C	2.19	0.46
1:A:329:PHE:HD2	1:A:330:GLN:HE21	1.63	0.46
1:A:523:ILE:HG22	6:A:700:ACD:H8	1.96	0.46
1:A:291:VAL:HG22	1:A:291:VAL:O	2.16	0.46
1:A:149:THR:HG22	1:A:377:ILE:O	2.16	0.46
1:A:126:SER:HA	1:A:127:PRO:C	2.36	0.46
1:A:495:TYR:HE2	1:A:502:GLU:HG3	1.80	0.46
1:A:482:THR:HG22	1:A:509:LEU:O	2.16	0.46
6:A:700:ACD:H41	6:A:700:ACD:H71	1.77	0.46
1:A:504:TYR:N	1:A:505:PRO:CD	2.79	0.46
1:A:198:PHE:HA	1:A:580:PHE:CD1	2.51	0.45
1:A:155:VAL:O	1:A:156:PRO:C	2.54	0.45
1:A:424:ASP:O	1:A:428:ARG:HD2	2.15	0.45
1:A:518:PHE:CD1	1:A:522:MET:HG2	2.51	0.45
1:A:251:LYS:HB3	1:A:310:ASN:CG	2.37	0.45
1:A:327:GLN:C	1:A:329:PHE:N	2.69	0.45
1:A:364:GLU:HG2	1:A:367:PHE:CE1	2.51	0.45
1:A:527:ALA:HB3	1:A:528:PRO:CD	2.46	0.45
1:A:415:VAL:HG12	1:A:415:VAL:O	2.16	0.45
2:B:1:NAG:O6	2:B:2:NDG:H8C1	2.17	0.45
1:A:417:TYR:HD2	7:A:821:HOH:O	2.00	0.45
1:A:337:ILE:HD12	1:A:337:ILE:H	1.81	0.45
1:A:532:LYS:HD2	1:A:532:LYS:O	2.17	0.45
1:A:255:GLN:HE21	1:A:264:PRO:HA	1.81	0.44
1:A:582:VAL:HG23	1:A:583:PRO:CD	2.47	0.44
1:A:46:ILE:HB	1:A:58:ASP:HB3	1.99	0.44
1:A:150:ARG:NH2	1:A:460:LEU:CD2	2.79	0.44
1:A:521:SER:HB3	1:A:525:MET:HE2	1.98	0.44
1:A:245:ARG:HD2	1:A:329:PHE:CZ	2.53	0.44
1:A:152:LEU:HD12	1:A:466:TYR:CE1	2.53	0.44
1:A:204:HIS:ND1	1:A:301:TYR:CB	2.80	0.44

Continued on next page...

Continued from previous page...

Atom-1	Atom-2	Interatomic distance (Å)	Clash overlap (Å)
1:A:574:THR:O	1:A:576:PRO:HD3	2.18	0.44
1:A:403:SER:H	1:A:406:GLN:CD	2.21	0.44
1:A:225:GLY:O	1:A:226:HIS:O	2.35	0.44
1:A:319:GLU:HB3	1:A:320:HIS:CE1	2.52	0.44
1:A:544:TYR:O	1:A:546:LYS:N	2.49	0.44
1:A:107:PHE:CD2	1:A:107:PHE:N	2.86	0.43
1:A:115:LEU:O	1:A:119:VAL:HG23	2.17	0.43
1:A:255:GLN:NE2	1:A:265:SER:N	2.66	0.43
1:A:462:PRO:O	1:A:465:GLU:HB2	2.18	0.43
1:A:179:ARG:O	1:A:183:LEU:HB3	2.19	0.43
1:A:408:LEU:C	1:A:410:ASN:N	2.71	0.43
1:A:402:TYR:CD2	1:A:402:TYR:N	2.86	0.43
1:A:444:ILE:HG22	5:A:601:COH:HMB2	1.99	0.43
1:A:246:LEU:O	1:A:248:LYS:N	2.52	0.43
1:A:329:PHE:CD2	1:A:330:GLN:NE2	2.86	0.43
1:A:363:PRO:HG2	1:A:545:TRP:CE2	2.54	0.43
1:A:423:VAL:C	1:A:425:ALA:N	2.72	0.43
1:A:582:VAL:CG2	1:A:583:PRO:N	2.81	0.43
1:A:308:GLU:O	1:A:311:ARG:N	2.52	0.43
1:A:384:LEU:C	1:A:384:LEU:CD2	2.87	0.43
1:A:487:MET:CE	1:A:509:LEU:HD22	2.48	0.43
1:A:108:ILE:O	1:A:112:LEU:HG	2.18	0.43
1:A:162:PRO:HG3	1:A:171:LEU:HG	2.01	0.43
1:A:260:GLU:HB2	1:A:262:TYR:CE1	2.48	0.43
1:A:244:LEU:HD12	1:A:244:LEU:O	2.19	0.43
1:A:454:GLU:O	1:A:457:VAL:HB	2.19	0.43
1:A:201:PHE:CE2	1:A:205:PHE:HB2	2.53	0.43
1:A:305:TRP:O	1:A:308:GLU:HB3	2.19	0.43
1:A:183:LEU:HB2	1:A:445:LEU:CD2	2.49	0.42
1:A:208:GLN:HE21	1:A:229:ASP:H	1.66	0.42
1:A:144:ASN:OD1	1:A:146:SER:CB	2.68	0.42
1:A:419:VAL:O	1:A:420:GLU:C	2.56	0.42
1:A:448:ALA:O	1:A:452:ILE:HG22	2.19	0.42
1:A:245:ARG:O	1:A:247:PHE:HD1	2.02	0.42
1:A:246:LEU:O	1:A:246:LEU:CG	2.66	0.42
1:A:507:LEU:HB3	1:A:522:MET:CE	2.50	0.42
1:A:261:VAL:C	1:A:262:TYR:CD1	2.93	0.42
1:A:363:PRO:HB3	1:A:540:CYS:O	2.18	0.42
1:A:483:GLY:H	1:A:511:LYS:HB3	1.84	0.42
1:A:375:ASN:OD1	1:A:533:GLY:CA	2.67	0.42
1:A:308:GLU:O	1:A:309:HIS:C	2.57	0.42

Continued on next page...

Continued from previous page...

Atom-1	Atom-2	Interatomic distance (Å)	Clash overlap (Å)
1:A:331:THR:HG23	1:A:550:PHE:HA	2.02	0.42
1:A:564:LEU:HD22	1:A:578:VAL:HG21	2.01	0.42
1:A:210:PHE:CZ	1:A:382:ASN:HA	2.55	0.42
1:A:275:TYR:CG	1:A:284:GLN:HG2	2.54	0.42
1:A:567:LEU:HA	1:A:567:LEU:HD12	1.77	0.42
1:A:338:GLY:O	1:A:339:GLU:C	2.58	0.42
1:A:440:ILE:HD13	1:A:448:ALA:HB2	2.02	0.42
1:A:577:TYR:CE2	1:A:583:PRO:HD3	2.55	0.42
1:A:495:TYR:OH	1:A:502:GLU:HG3	2.20	0.41
1:A:291:VAL:O	1:A:293:GLY:N	2.53	0.41
1:A:439:ASN:HD22	1:A:439:ASN:HA	1.54	0.41
6:A:700:ACD:H102	6:A:700:ACD:H72	1.80	0.41
1:A:75:TRP:O	1:A:78:LEU:N	2.53	0.41
1:A:211:LYS:HE3	1:A:223:ALA:HB2	2.02	0.41
1:A:255:GLN:HE21	1:A:265:SER:N	2.18	0.41
1:A:410:ASN:OD1	1:A:411:THR:N	2.53	0.41
1:A:59:CYS:O	1:A:62:THR:CB	2.68	0.41
1:A:195:ASN:O	1:A:198:PHE:HB3	2.21	0.41
1:A:218:PRO:HB3	1:A:454:GLU:HG3	2.01	0.41
1:A:507:LEU:HD22	1:A:522:MET:CE	2.49	0.41
1:A:73:GLU:H	1:A:76:THR:HG21	1.81	0.41
1:A:115:LEU:HD23	4:A:751:BOG:H5'2	2.02	0.41
1:A:116:VAL:CG1	1:A:117:LEU:N	2.84	0.41
1:A:275:TYR:CE2	1:A:284:GLN:HG2	2.55	0.41
1:A:306:LEU:HD23	1:A:306:LEU:C	2.41	0.41
1:A:409:PHE:C	1:A:410:ASN:O	2.59	0.41
1:A:518:PHE:HE2	1:A:523:ILE:HG12	1.85	0.41
1:A:133:ALA:HB1	4:A:752:BOG:H2	2.02	0.41
1:A:150:ARG:NH1	1:A:154:SER:CA	2.83	0.41
1:A:280:PRO:O	1:A:284:GLN:HB3	2.21	0.41
1:A:338:GLY:HA3	1:A:559:VAL:CG1	2.50	0.41
1:A:83:ARG:HA	1:A:84:PRO:HD2	1.93	0.40
1:A:253:LYS:O	1:A:254:TYR:HB3	2.21	0.40
1:A:263:PRO:HD2	1:A:285:MET:HE1	2.02	0.40
1:A:73:GLU:O	1:A:74:ILE:C	2.59	0.40
1:A:383:GLN:HE22	1:A:460:LEU:CD1	2.34	0.40
1:A:564:LEU:HD23	1:A:564:LEU:C	2.42	0.40

There are no symmetry-related clashes.

5.3 Torsion angles [i](#)

5.3.1 Protein backbone [i](#)

In the following table, the Percentiles column shows the percent Ramachandran outliers of the chain as a percentile score with respect to all X-ray entries followed by that with respect to entries of similar resolution.

The Analysed column shows the number of residues for which the backbone conformation was analysed, and the total number of residues.

Mol	Chain	Analysed	Favoured	Allowed	Outliers	Percentiles
1	A	551/600 (92%)	428 (78%)	91 (16%)	32 (6%)	1 10

All (32) Ramachandran outliers are listed below:

Mol	Chain	Res	Type
1	A	226	HIS
1	A	247	PHE
1	A	277	ARG
1	A	281	PRO
1	A	409	PHE
1	A	545	TRP
1	A	169	LYS
1	A	292	PHE
1	A	420	GLU
1	A	551	GLY
1	A	117	LEU
1	A	160	PRO
1	A	173	ASP
1	A	317	LYS
1	A	401	ASP
1	A	486	GLU
1	A	569	CYS
1	A	93	LEU
1	A	223	ALA
1	A	290	GLU
1	A	382	ASN
1	A	392	PRO
1	A	419	VAL
1	A	445	LEU
1	A	494	LEU
1	A	204	HIS
1	A	328	LEU
1	A	350	GLN

Continued on next page...

Continued from previous page...

Mol	Chain	Res	Type
1	A	400	GLN
1	A	280	PRO
1	A	270	PRO
1	A	74	ILE

5.3.2 Protein sidechains [i](#)

In the following table, the Percentiles column shows the percent sidechain outliers of the chain as a percentile score with respect to all X-ray entries followed by that with respect to entries of similar resolution.

The Analysed column shows the number of residues for which the sidechain conformation was analysed, and the total number of residues.

Mol	Chain	Analysed	Rotameric	Outliers	Percentiles
1	A	435/529 (82%)	391 (90%)	44 (10%)	7 28

All (44) residues with a non-rotameric sidechain are listed below:

Mol	Chain	Res	Type
1	A	33	VAL
1	A	48	VAL
1	A	49	ARG
1	A	107	PHE
1	A	114	ARG
1	A	116	VAL
1	A	120	ARG
1	A	136	TYR
1	A	148	TYR
1	A	180	ARG
1	A	197	MET
1	A	201	PHE
1	A	228	VAL
1	A	244	LEU
1	A	257	LEU
1	A	280	PRO
1	A	284	GLN
1	A	307	ARG
1	A	322	THR
1	A	336	LEU
1	A	342	LYS
1	A	366	LEU

Continued on next page...

Continued from previous page...

Mol	Chain	Res	Type
1	A	374	ARG
1	A	375	ASN
1	A	376	ARG
1	A	384	LEU
1	A	385	TYR
1	A	395	PHE
1	A	422	LEU
1	A	439	ASN
1	A	442	HIS
1	A	452	ILE
1	A	469	ARG
1	A	484	GLU
1	A	501	LEU
1	A	518	PHE
1	A	523	ILE
1	A	535	LEU
1	A	554	VAL
1	A	556	PHE
1	A	570	LEU
1	A	574	THR
1	A	578	VAL
1	A	582	VAL

Sometimes sidechains can be flipped to improve hydrogen bonding and reduce clashes. All (16) such sidechains are listed below:

Mol	Chain	Res	Type
1	A	56	GLN
1	A	203	GLN
1	A	208	GLN
1	A	232	HIS
1	A	255	GLN
1	A	258	ASN
1	A	274	HIS
1	A	284	GLN
1	A	330	GLN
1	A	358	GLN
1	A	375	ASN
1	A	382	ASN
1	A	383	GLN
1	A	406	GLN
1	A	439	ASN
1	A	557	ASN

5.3.3 RNA [i](#)

There are no RNA molecules in this entry.

5.4 Non-standard residues in protein, DNA, RNA chains [i](#)

There are no non-standard protein/DNA/RNA residues in this entry.

5.5 Carbohydrates [i](#)

8 monosaccharides are modelled in this entry.

In the following table, the Counts columns list the number of bonds (or angles) for which Mogul statistics could be retrieved, the number of bonds (or angles) that are observed in the model and the number of bonds (or angles) that are defined in the Chemical Component Dictionary. The Link column lists molecule types, if any, to which the group is linked. The Z score for a bond length (or angle) is the number of standard deviations the observed value is removed from the expected value. A bond length (or angle) with $|Z| > 2$ is considered an outlier worth inspection. RMSZ is the root-mean-square of all Z scores of the bond lengths (or angles).

Mol	Type	Chain	Res	Link	Bond lengths			Bond angles		
					Counts	RMSZ	# Z > 2	Counts	RMSZ	# Z > 2
2	NAG	B	1	2,1	14,14,15	0.76	0	17,19,21	1.15	3 (17%)
2	NDG	B	2	2	14,14,15	0.87	1 (7%)	17,19,21	0.81	0
3	NAG	C	1	1,3	14,14,15	0.53	0	17,19,21	0.76	1 (5%)
3	NAG	C	2	3	14,14,15	0.63	0	17,19,21	0.84	0
3	BMA	C	3	3	11,11,12	0.52	0	15,15,17	0.44	0
3	BMA	C	4	3	11,11,12	0.73	0	15,15,17	0.91	1 (6%)
2	NAG	D	1	2,1	14,14,15	0.68	0	17,19,21	0.67	0
2	NDG	D	2	2	14,14,15	0.76	0	17,19,21	0.96	0

In the following table, the Chirals column lists the number of chiral outliers, the number of chiral centers analysed, the number of these observed in the model and the number defined in the Chemical Component Dictionary. Similar counts are reported in the Torsion and Rings columns. '-' means no outliers of that kind were identified.

Mol	Type	Chain	Res	Link	Chirals	Torsions	Rings
2	NAG	B	1	2,1	-	2/6/23/26	0/1/1/1
2	NDG	B	2	2	-	2/6/23/26	0/1/1/1
3	NAG	C	1	1,3	-	2/6/23/26	0/1/1/1
3	NAG	C	2	3	-	5/6/23/26	0/1/1/1
3	BMA	C	3	3	-	0/2/19/22	0/1/1/1

Continued on next page...

Continued from previous page...

Mol	Type	Chain	Res	Link	Chirals	Torsions	Rings
3	BMA	C	4	3	-	2/2/19/22	1/1/1/1
2	NAG	D	1	2,1	-	4/6/23/26	0/1/1/1
2	NDG	D	2	2	-	4/6/23/26	0/1/1/1

All (1) bond length outliers are listed below:

Mol	Chain	Res	Type	Atoms	Z	Observed(Å)	Ideal(Å)
2	B	2	NDG	C1-C2	2.70	1.56	1.52

All (5) bond angle outliers are listed below:

Mol	Chain	Res	Type	Atoms	Z	Observed(°)	Ideal(°)
3	C	4	BMA	C1-O5-C5	2.97	116.22	112.19
2	B	1	NAG	C2-N2-C7	-2.80	118.92	122.90
3	C	1	NAG	C2-N2-C7	-2.31	119.61	122.90
2	B	1	NAG	C4-C3-C2	-2.17	107.84	111.02
2	B	1	NAG	O5-C1-C2	-2.01	108.12	111.29

There are no chirality outliers.

All (21) torsion outliers are listed below:

Mol	Chain	Res	Type	Atoms
2	B	2	NDG	C8-C7-N2-C2
2	B	2	NDG	O7-C7-N2-C2
2	D	1	NAG	C8-C7-N2-C2
2	D	1	NAG	O7-C7-N2-C2
2	D	2	NDG	C8-C7-N2-C2
2	D	2	NDG	O7-C7-N2-C2
3	C	2	NAG	C8-C7-N2-C2
3	C	2	NAG	O7-C7-N2-C2
2	D	1	NAG	O5-C5-C6-O6
2	D	2	NDG	O5-C5-C6-O6
2	B	1	NAG	O5-C5-C6-O6
2	D	1	NAG	C4-C5-C6-O6
3	C	4	BMA	O5-C5-C6-O6
2	D	2	NDG	C4-C5-C6-O6
3	C	4	BMA	C4-C5-C6-O6
3	C	2	NAG	C1-C2-N2-C7
2	B	1	NAG	C4-C5-C6-O6
3	C	1	NAG	C8-C7-N2-C2

Continued on next page...

Continued from previous page...

Mol	Chain	Res	Type	Atoms
3	C	1	NAG	O7-C7-N2-C2
3	C	2	NAG	C4-C5-C6-O6
3	C	2	NAG	O5-C5-C6-O6

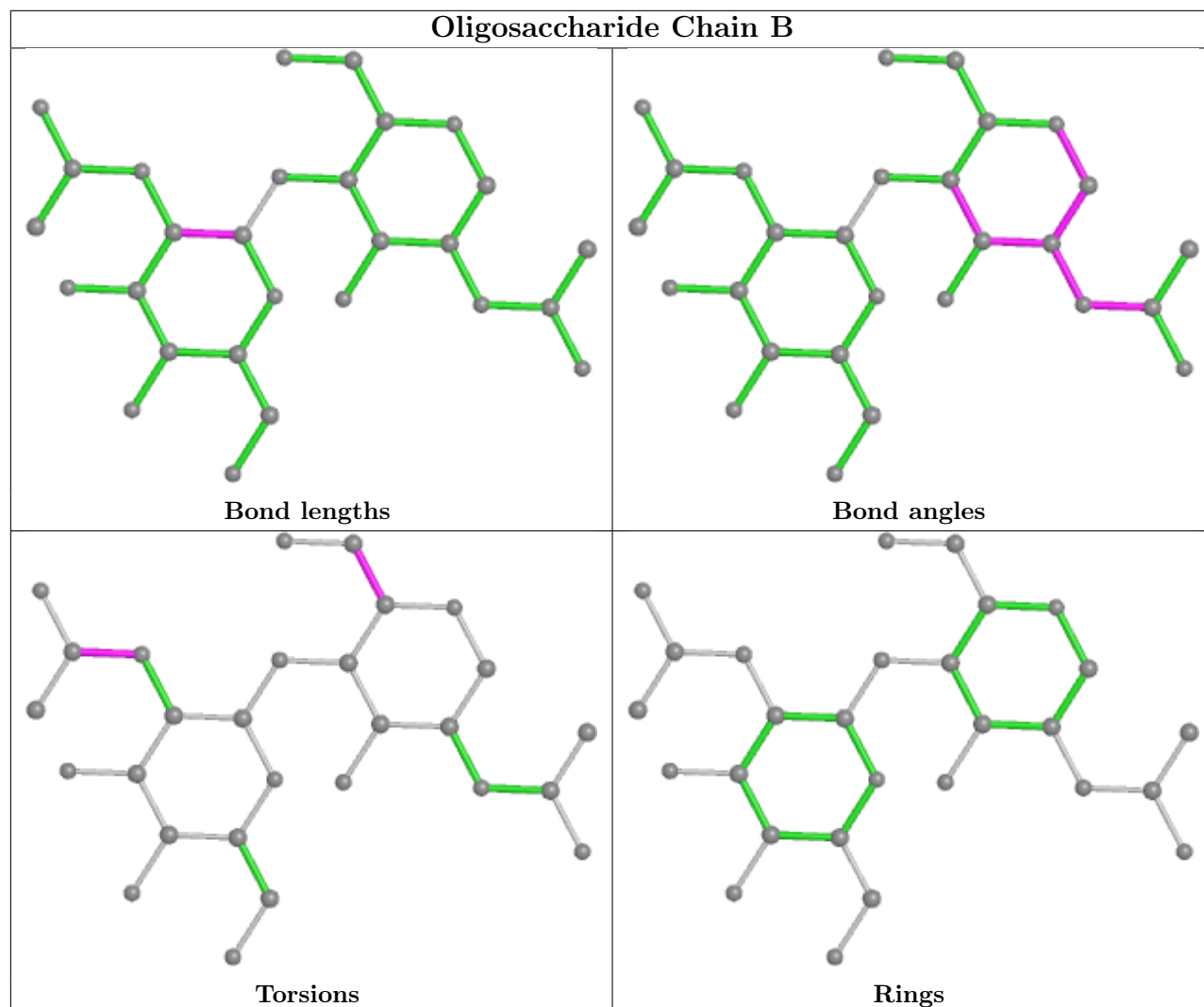
All (1) ring outliers are listed below:

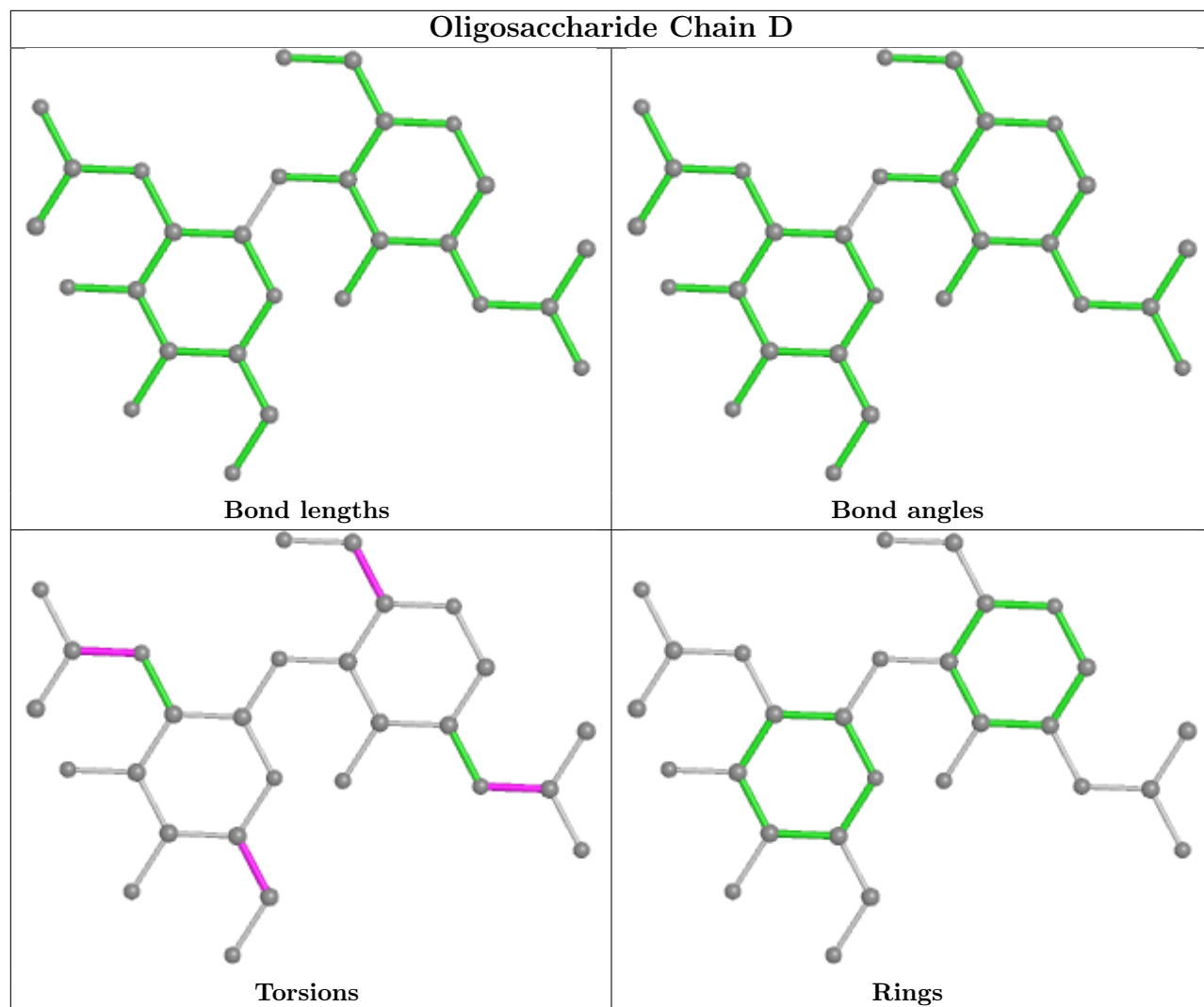
Mol	Chain	Res	Type	Atoms
3	C	4	BMA	C1-C2-C3-C4-C5-O5

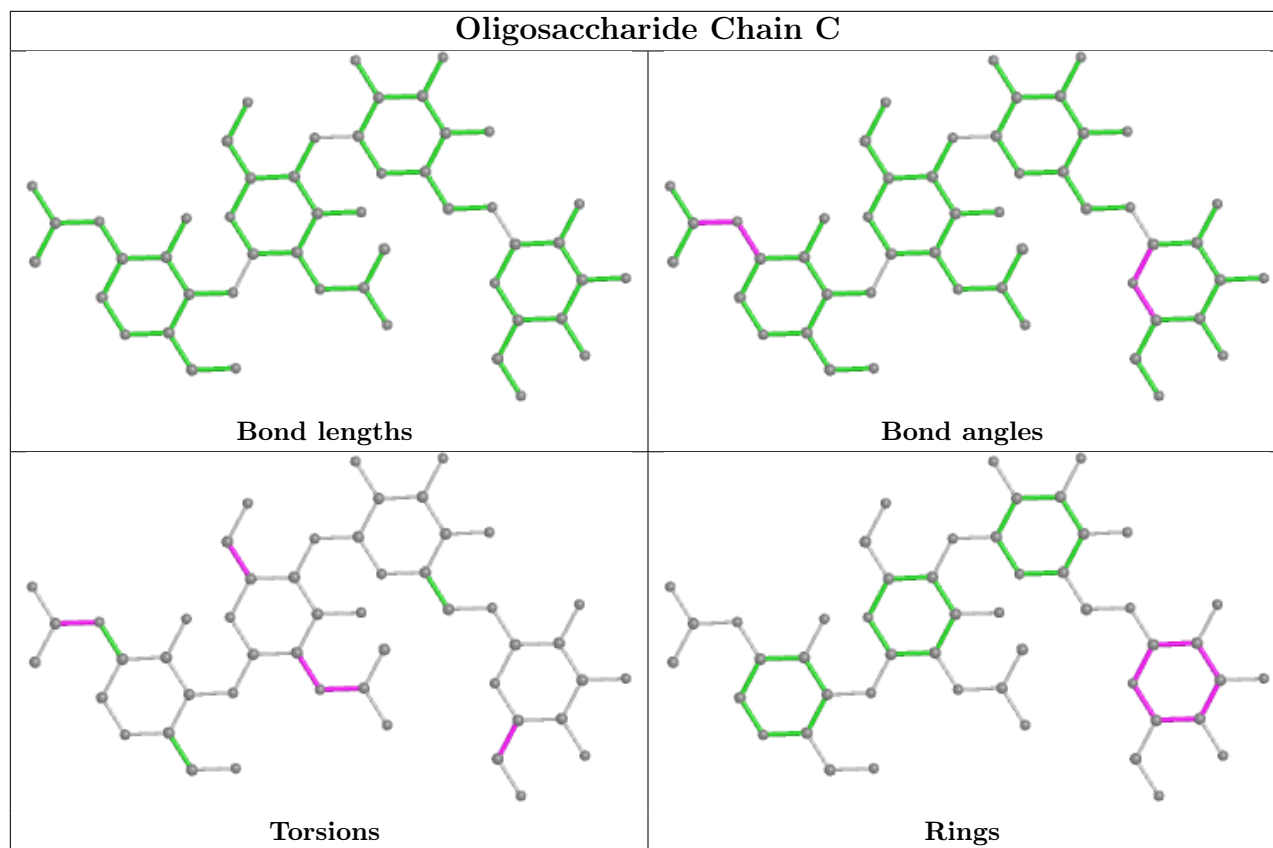
4 monomers are involved in 5 short contacts:

Mol	Chain	Res	Type	Clashes	Symm-Clashes
2	B	2	NDG	1	0
3	C	1	NAG	2	0
2	B	1	NAG	1	0
3	C	2	NAG	2	0

The following is a two-dimensional graphical depiction of Mogul quality analysis of bond lengths, bond angles, torsion angles, and ring geometry for oligosaccharide.







5.6 Ligand geometry [i](#)

6 ligands are modelled in this entry.

In the following table, the Counts columns list the number of bonds (or angles) for which Mogul statistics could be retrieved, the number of bonds (or angles) that are observed in the model and the number of bonds (or angles) that are defined in the Chemical Component Dictionary. The Link column lists molecule types, if any, to which the group is linked. The Z score for a bond length (or angle) is the number of standard deviations the observed value is removed from the expected value. A bond length (or angle) with $|Z| > 2$ is considered an outlier worth inspection. RMSZ is the root-mean-square of all Z scores of the bond lengths (or angles).

Mol	Type	Chain	Res	Link	Bond lengths			Bond angles		
					Counts	RMSZ	$\# Z > 2$	Counts	RMSZ	$\# Z > 2$
4	BOG	A	751	-	20,20,20	0.42	0	25,25,25	0.88	2 (8%)
5	COH	A	601	1	40,50,50	2.01	10 (25%)	38,82,82	2.46	11 (28%)
6	ACD	A	700	-	14,14,21	0.82	0	14,14,21	1.01	0
4	BOG	A	753	-	20,20,20	0.50	0	25,25,25	0.81	1 (4%)
4	BOG	A	750	-	20,20,20	0.39	0	25,25,25	0.67	1 (4%)
4	BOG	A	752	-	20,20,20	0.49	0	25,25,25	0.56	0

In the following table, the Chirals column lists the number of chiral outliers, the number of chiral

centers analysed, the number of these observed in the model and the number defined in the Chemical Component Dictionary. Similar counts are reported in the Torsion and Rings columns. '-' means no outliers of that kind were identified.

Mol	Type	Chain	Res	Link	Chirals	Torsions	Rings
4	BOG	A	751	-	-	3/11/31/31	0/1/1/1
5	COH	A	601	1	-	6/12/94/94	-
6	ACD	A	700	-	-	5/12/12/19	-
4	BOG	A	753	-	-	6/11/31/31	0/1/1/1
4	BOG	A	750	-	-	3/11/31/31	0/1/1/1
4	BOG	A	752	-	-	3/11/31/31	0/1/1/1

All (10) bond length outliers are listed below:

Mol	Chain	Res	Type	Atoms	Z	Observed(Å)	Ideal(Å)
5	A	601	COH	CAA-C2A	5.72	1.61	1.51
5	A	601	COH	C1A-NA	4.60	1.42	1.36
5	A	601	COH	CMC-C2C	3.83	1.56	1.50
5	A	601	COH	C3B-C4B	3.26	1.48	1.40
5	A	601	COH	C2A-C3A	3.10	1.43	1.36
5	A	601	COH	C3B-C2B	-2.93	1.36	1.40
5	A	601	COH	CBC-CAC	2.74	1.43	1.30
5	A	601	COH	C4C-C3C	-2.41	1.41	1.45
5	A	601	COH	CAD-C3D	2.08	1.55	1.52
5	A	601	COH	CHA-C1A	2.02	1.41	1.37

All (15) bond angle outliers are listed below:

Mol	Chain	Res	Type	Atoms	Z	Observed(°)	Ideal(°)
5	A	601	COH	CHC-C1C-NC	7.19	125.34	121.29
5	A	601	COH	C4A-C3A-C2A	-6.31	103.37	108.61
5	A	601	COH	CHB-C4A-NA	4.64	123.90	121.29
5	A	601	COH	CMD-C2D-C3D	4.47	133.37	124.94
5	A	601	COH	C1A-CHA-C4D	4.23	130.11	118.67
5	A	601	COH	C1C-CHC-C4B	3.86	129.12	118.67
5	A	601	COH	C4A-CHB-C1B	2.80	126.25	118.67
4	A	750	BOG	C1'-O1-C1	2.62	118.19	113.84
4	A	751	BOG	C1'-O1-C1	2.34	117.73	113.84
5	A	601	COH	C4C-CHD-C1D	2.34	124.99	118.67
5	A	601	COH	CHA-C4D-ND	2.11	123.95	122.40
4	A	751	BOG	C3-C4-C5	2.10	113.98	110.24
5	A	601	COH	CMB-C2B-C3B	2.08	128.57	124.68
5	A	601	COH	CAA-C2A-C3A	-2.08	124.01	127.88

Continued on next page...

Continued from previous page...

Mol	Chain	Res	Type	Atoms	Z	Observed(°)	Ideal(°)
4	A	753	BOG	C3-C4-C5	-2.06	106.56	110.24

There are no chirality outliers.

All (26) torsion outliers are listed below:

Mol	Chain	Res	Type	Atoms
4	A	750	BOG	C2'-C1'-O1-C1
4	A	751	BOG	C2'-C1'-O1-C1
4	A	752	BOG	C2'-C1'-O1-C1
4	A	753	BOG	C2-C1-O1-C1'
4	A	753	BOG	O5-C1-O1-C1'
4	A	752	BOG	O5-C5-C6-O6
4	A	753	BOG	O5-C5-C6-O6
4	A	751	BOG	O5-C1-O1-C1'
4	A	752	BOG	C4-C5-C6-O6
4	A	753	BOG	C4-C5-C6-O6
4	A	750	BOG	O5-C5-C6-O6
4	A	753	BOG	C4'-C5'-C6'-C7'
4	A	753	BOG	C2'-C1'-O1-C1
4	A	751	BOG	C1'-C2'-C3'-C4'
6	A	700	ACD	C9-C10-C11-C12
5	A	601	COH	C2C-C3C-CAC-CBC
6	A	700	ACD	C1-C2-C3-C4
6	A	700	ACD	O1-C1-C2-C3
6	A	700	ACD	C11-C10-C9-C8
6	A	700	ACD	O2-C1-C2-C3
4	A	750	BOG	C4-C5-C6-O6
5	A	601	COH	CAA-CBA-CGA-O2A
5	A	601	COH	C4C-C3C-CAC-CBC
5	A	601	COH	CAD-CBD-CGD-O1D
5	A	601	COH	CAD-CBD-CGD-O2D
5	A	601	COH	CAA-CBA-CGA-O1A

There are no ring outliers.

6 monomers are involved in 24 short contacts:

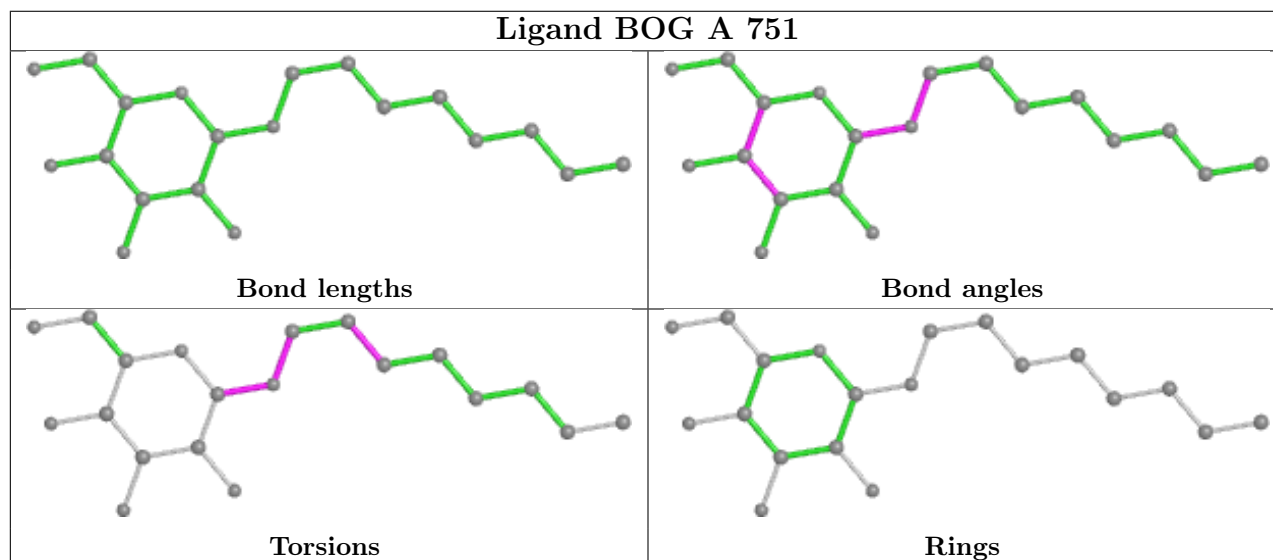
Mol	Chain	Res	Type	Clashes	Symm-Clashes
4	A	751	BOG	5	0
5	A	601	COH	4	0
6	A	700	ACD	7	0
4	A	753	BOG	3	0

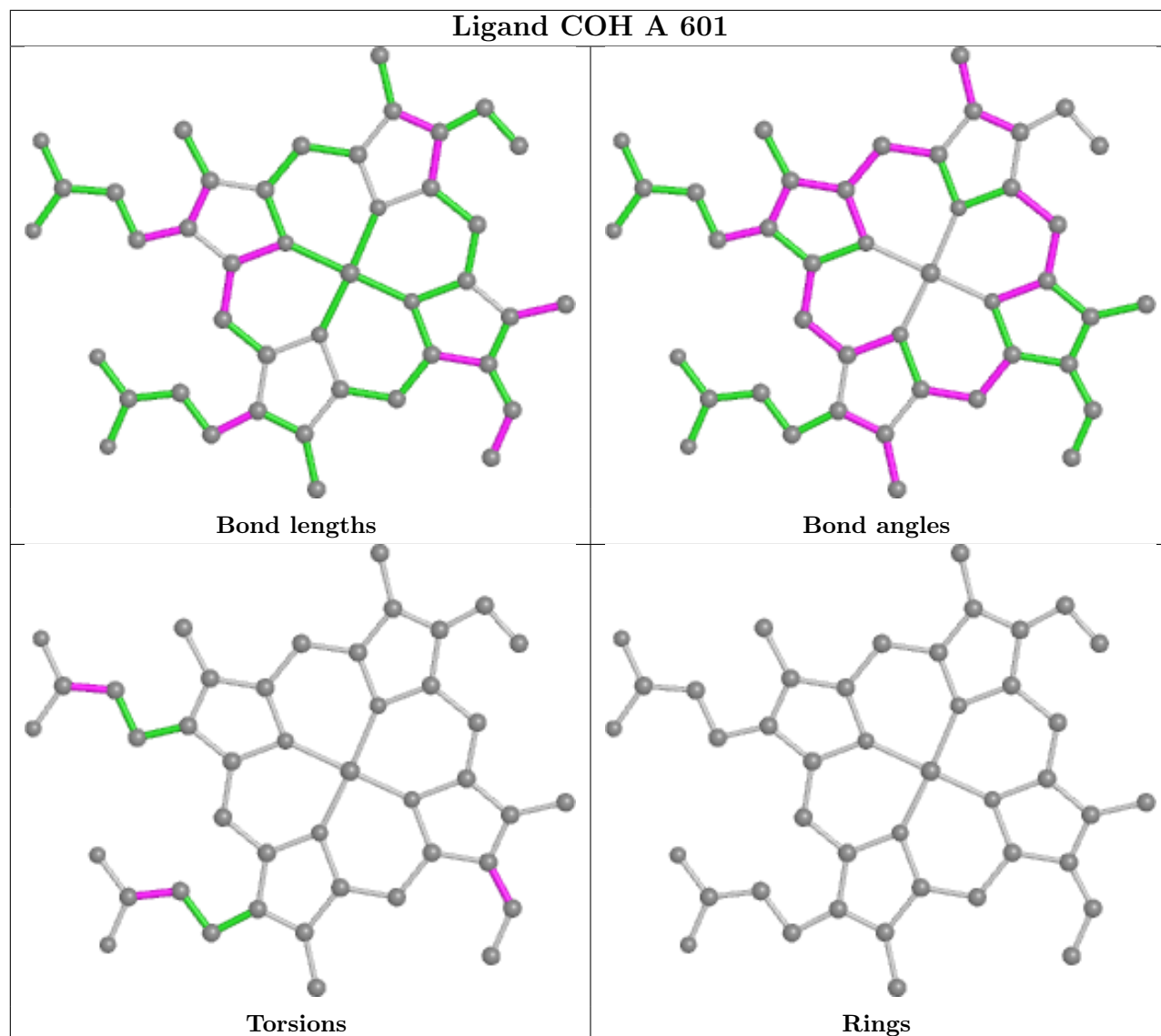
Continued on next page...

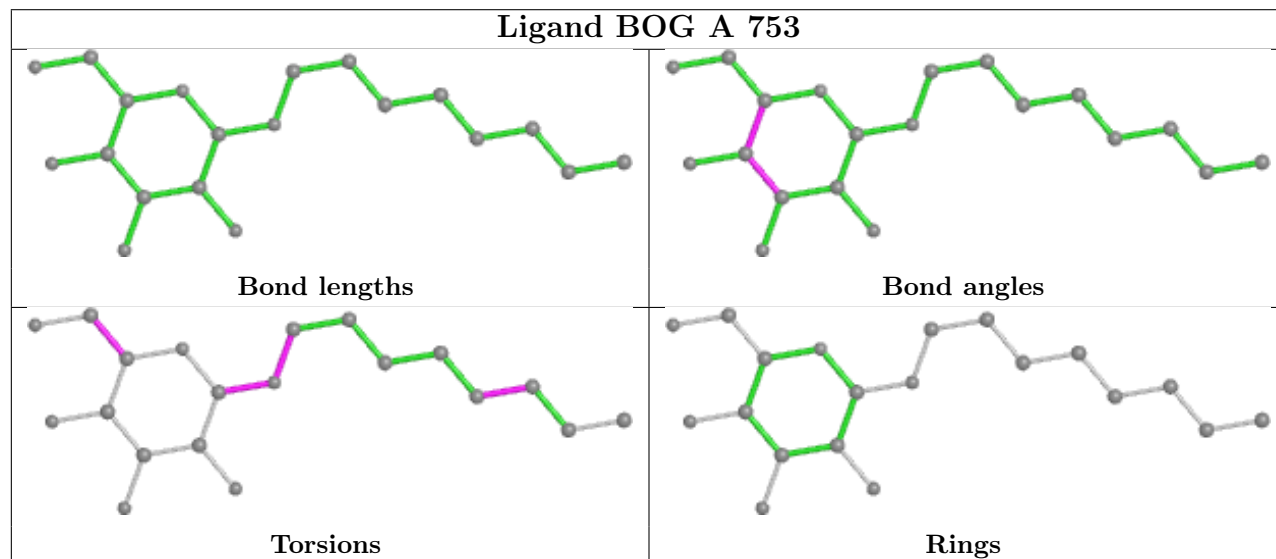
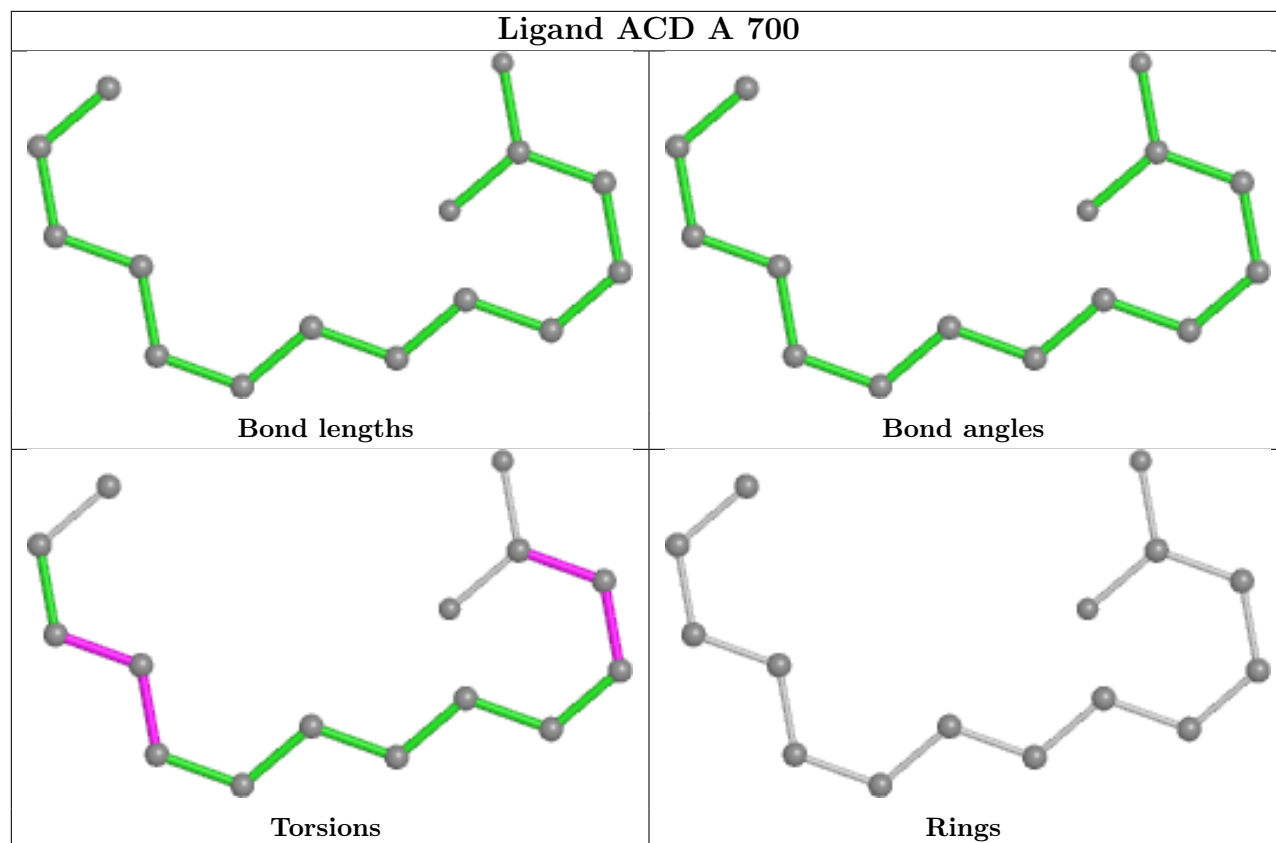
Continued from previous page...

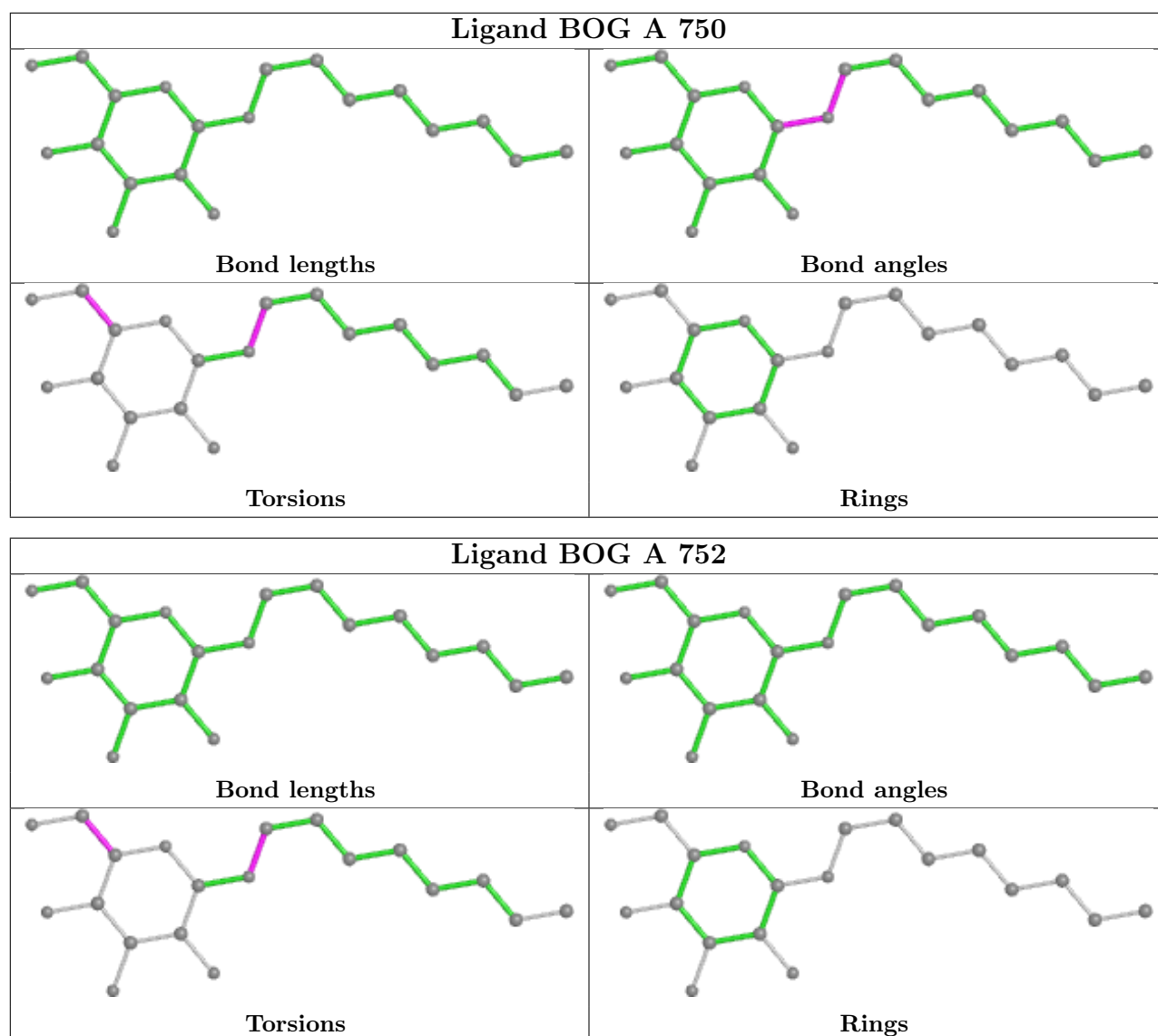
Mol	Chain	Res	Type	Clashes	Symm-Clashes
4	A	750	BOG	1	0
4	A	752	BOG	4	0

The following is a two-dimensional graphical depiction of Mogul quality analysis of bond lengths, bond angles, torsion angles, and ring geometry for all instances of the Ligand of Interest. In addition, ligands with molecular weight > 250 and outliers as shown on the validation Tables will also be included. For torsion angles, if less than 5% of the Mogul distribution of torsion angles is within 10 degrees of the torsion angle in question, then that torsion angle is considered an outlier. Any bond that is central to one or more torsion angles identified as an outlier by Mogul will be highlighted in the graph. For rings, the root-mean-square deviation (RMSD) between the ring in question and similar rings identified by Mogul is calculated over all ring torsion angles. If the average RMSD is greater than 60 degrees and the minimal RMSD between the ring in question and any Mogul-identified rings is also greater than 60 degrees, then that ring is considered an outlier. The outliers are highlighted in purple. The color gray indicates Mogul did not find sufficient equivalents in the CSD to analyse the geometry.









5.7 Other polymers [i](#)

There are no such residues in this entry.

5.8 Polymer linkage issues [i](#)

There are no chain breaks in this entry.

6 Fit of model and data [i](#)

6.1 Protein, DNA and RNA chains [i](#)

In the following table, the column labelled ‘#RSRZ> 2’ contains the number (and percentage) of RSRZ outliers, followed by percent RSRZ outliers for the chain as percentile scores relative to all X-ray entries and entries of similar resolution. The OWAB column contains the minimum, median, 95th percentile and maximum values of the occupancy-weighted average B-factor per residue. The column labelled ‘Q< 0.9’ lists the number of (and percentage) of residues with an average occupancy less than 0.9.

Mol	Chain	Analysed	<RSRZ>	#RSRZ>2	OWAB(Å ²)	Q<0.9
1	A	553/600 (92%)	-0.73	0 100 100	20, 37, 70, 137	0

There are no RSRZ outliers to report.

6.2 Non-standard residues in protein, DNA, RNA chains [i](#)

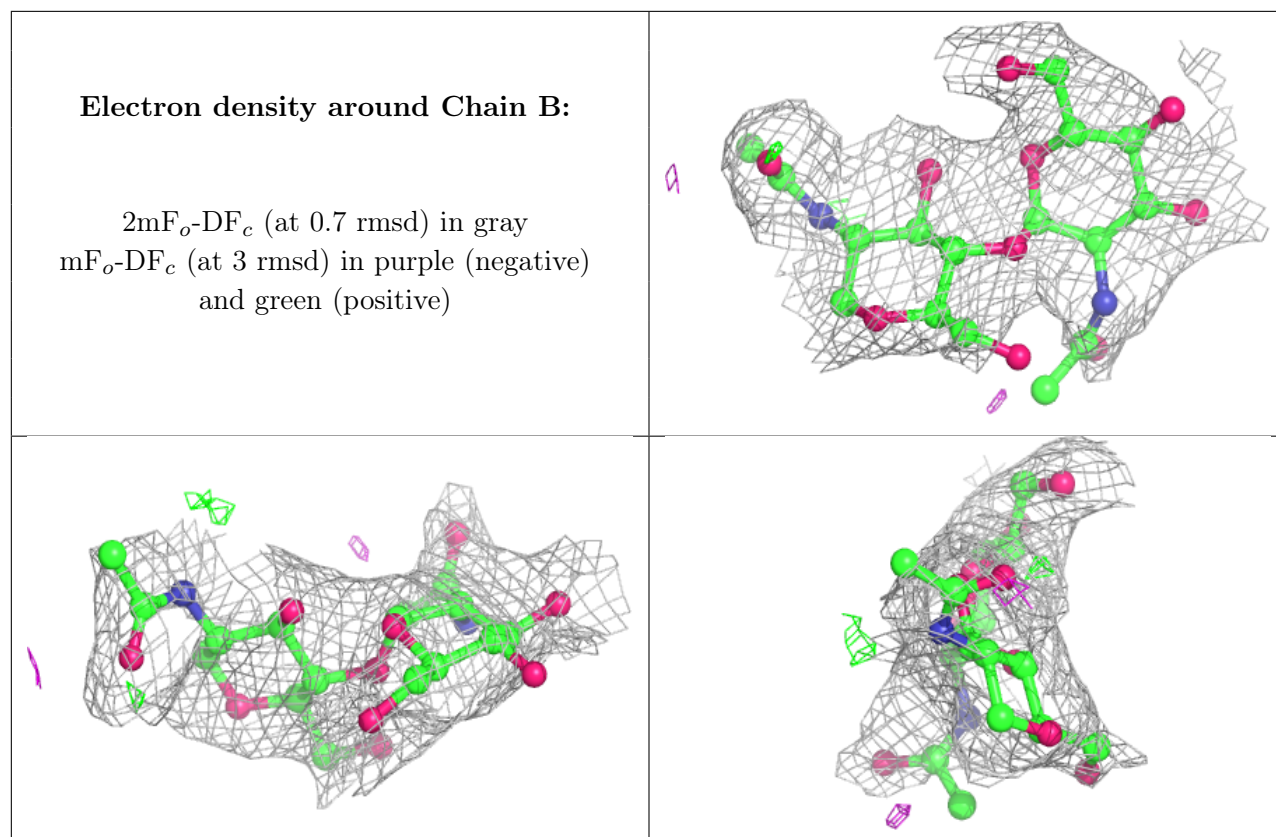
There are no non-standard protein/DNA/RNA residues in this entry.

6.3 Carbohydrates [i](#)

In the following table, the Atoms column lists the number of modelled atoms in the group and the number defined in the chemical component dictionary. The B-factors column lists the minimum, median, 95th percentile and maximum values of B factors of atoms in the group. The column labelled ‘Q< 0.9’ lists the number of atoms with occupancy less than 0.9.

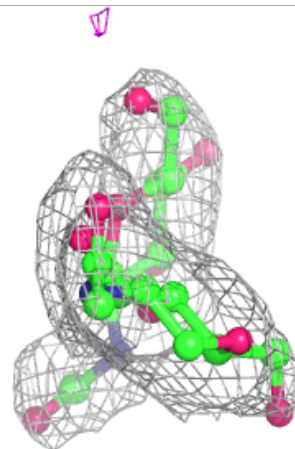
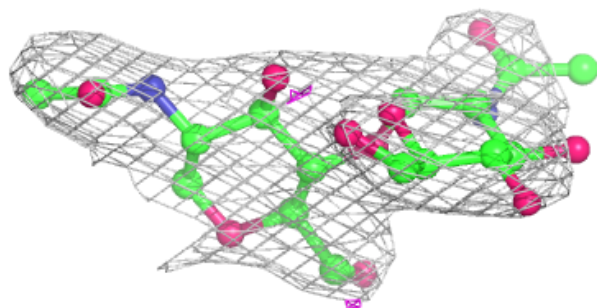
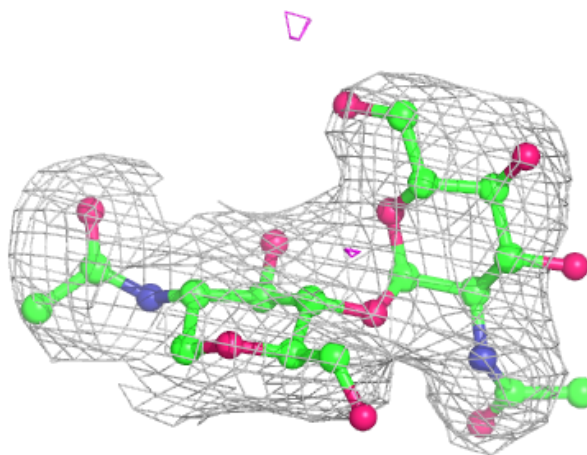
Mol	Type	Chain	Res	Atoms	RSCC	RSR	B-factors(Å ²)	Q<0.9
3	BMA	C	4	11/12	0.77	0.23	106,106,106,106	0
2	NDG	B	2	14/15	0.78	0.28	94,94,94,94	0
2	NAG	B	1	14/15	0.84	0.25	73,73,73,73	0
3	NAG	C	2	14/15	0.86	0.26	56,56,56,56	0
3	BMA	C	3	11/12	0.89	0.20	110,110,110,110	0
2	NDG	D	2	14/15	0.89	0.33	97,97,97,97	0
2	NAG	D	1	14/15	0.90	0.20	55,55,55,55	0
3	NAG	C	1	14/15	0.93	0.14	39,39,39,39	0

The following is a graphical depiction of the model fit to experimental electron density for oligosaccharide. Each fit is shown from different orientation to approximate a three-dimensional view.

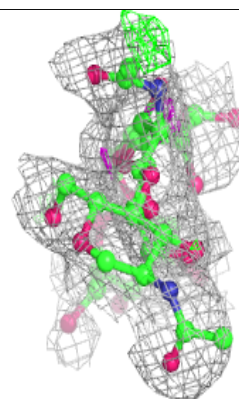
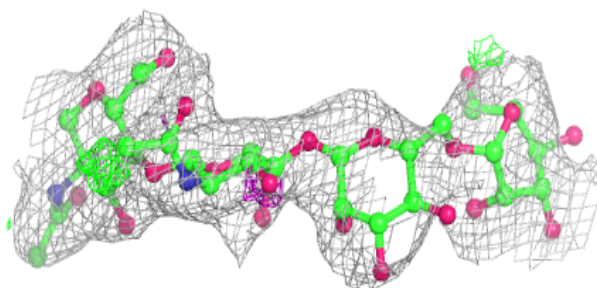
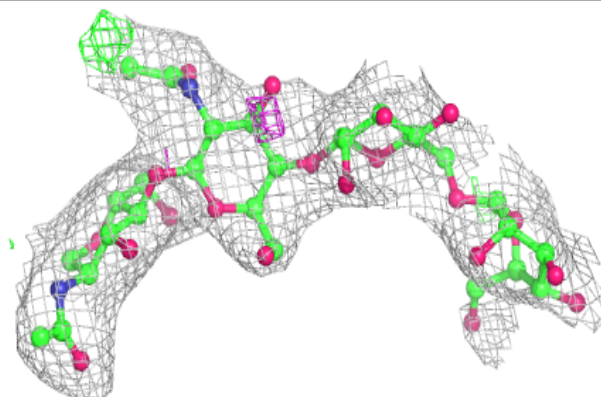


Electron density around Chain D:

$2mF_o-DF_c$ (at 0.7 rmsd) in gray
 mF_o-DF_c (at 3 rmsd) in purple (negative)
and green (positive)

**Electron density around Chain C:**

$2mF_o-DF_c$ (at 0.7 rmsd) in gray
 mF_o-DF_c (at 3 rmsd) in purple (negative)
and green (positive)

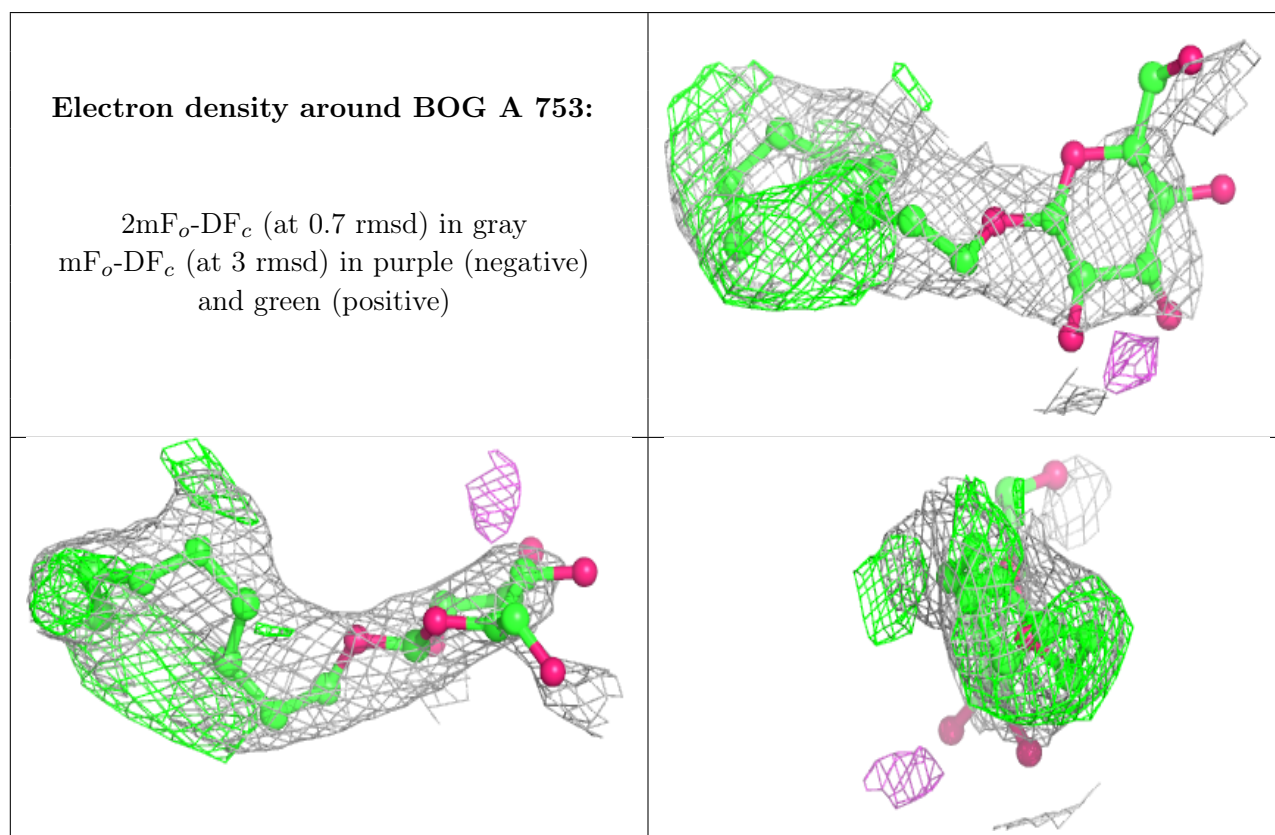


6.4 Ligands [i](#)

In the following table, the Atoms column lists the number of modelled atoms in the group and the number defined in the chemical component dictionary. The B-factors column lists the minimum, median, 95th percentile and maximum values of B factors of atoms in the group. The column labelled 'Q<0.9' lists the number of atoms with occupancy less than 0.9.

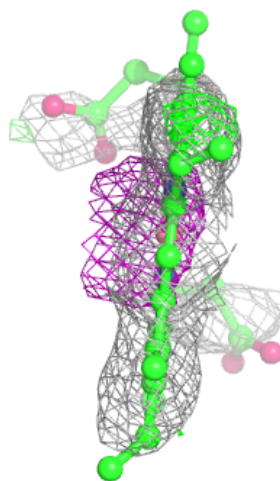
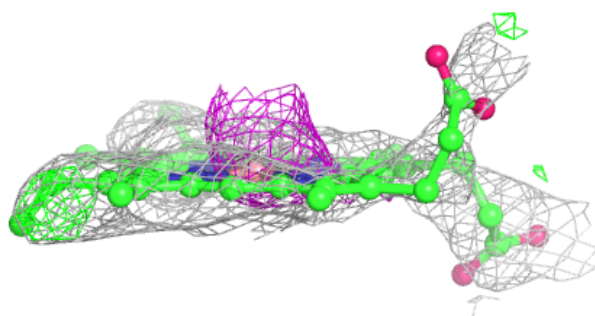
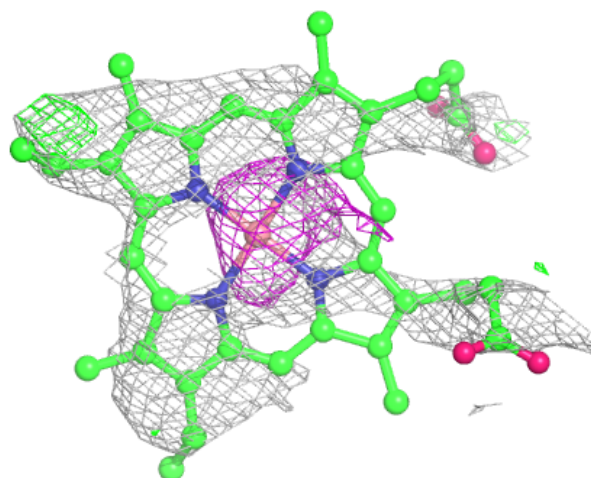
Mol	Type	Chain	Res	Atoms	RSCC	RSR	B-factors(Å ²)	Q<0.9
4	BOG	A	753	20/20	0.57	0.42	63,63,63,63	20
5	COH	A	601	43/43	0.73	0.40	67,67,67,67	43
4	BOG	A	752	20/20	0.84	0.37	60,60,60,60	0
6	ACD	A	700	15/22	0.86	0.30	56,56,56,56	0
4	BOG	A	750	20/20	0.90	0.36	62,62,62,62	0
4	BOG	A	751	20/20	0.92	0.18	33,33,33,33	0

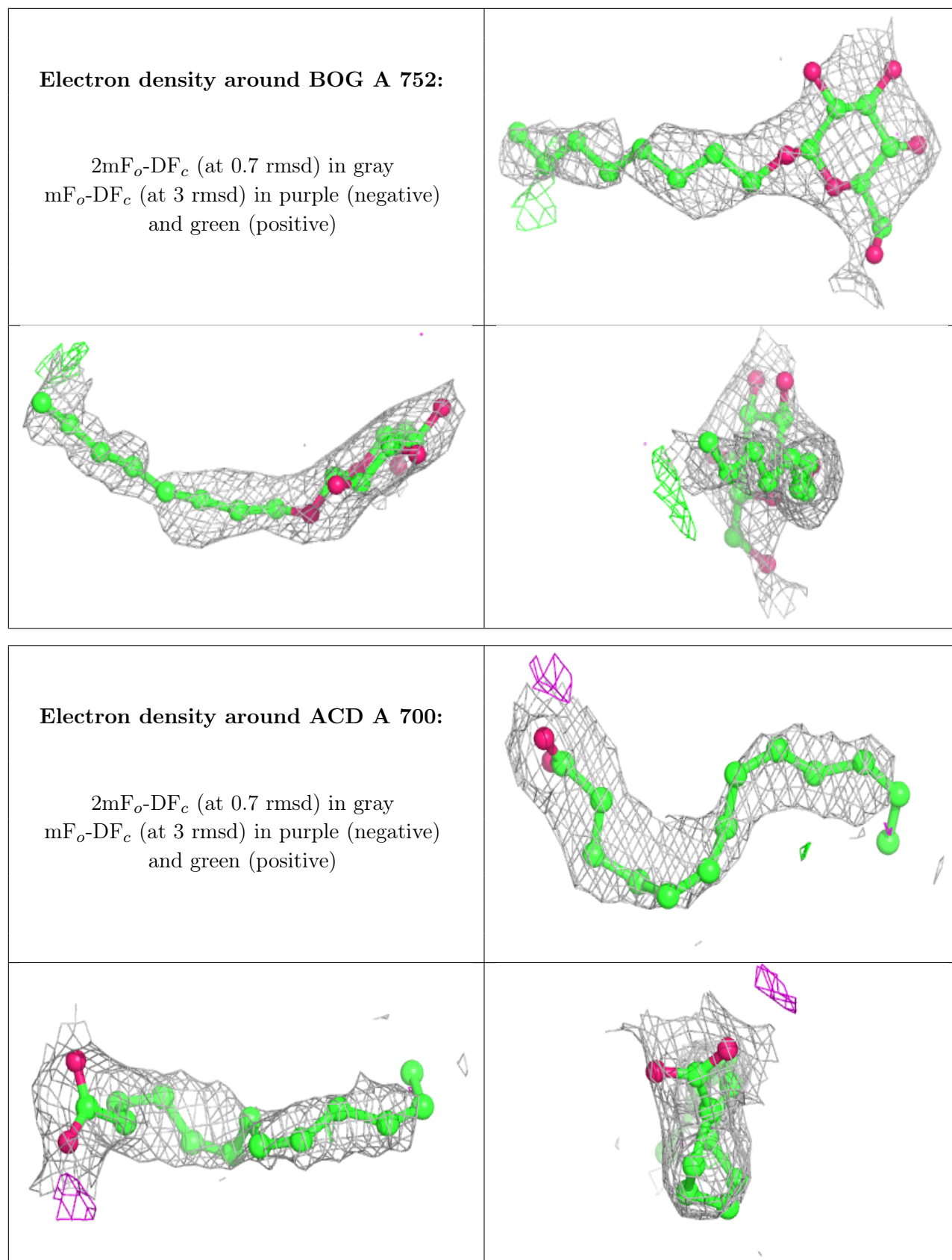
The following is a graphical depiction of the model fit to experimental electron density of all instances of the Ligand of Interest. In addition, ligands with molecular weight > 250 and outliers as shown on the geometry validation Tables will also be included. Each fit is shown from different orientation to approximate a three-dimensional view.



Electron density around COH A 601:

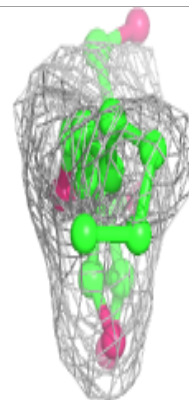
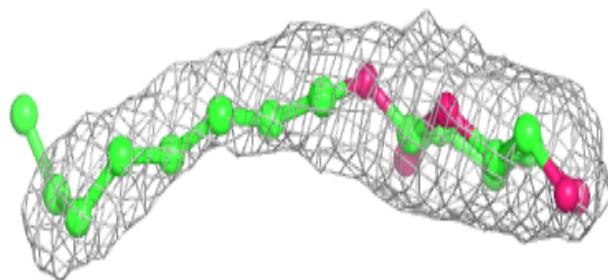
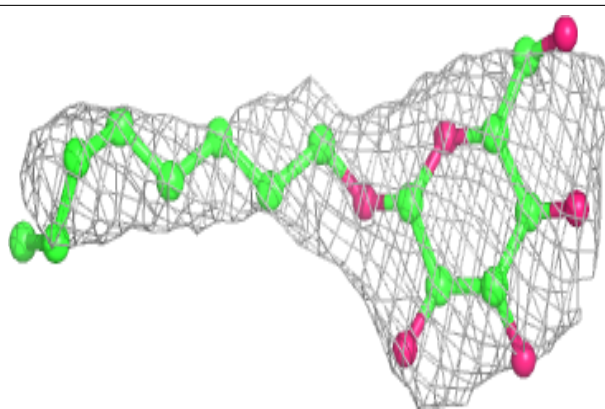
$2mF_o-DF_c$ (at 0.7 rmsd) in gray
 mF_o-DF_c (at 3 rmsd) in purple (negative)
and green (positive)



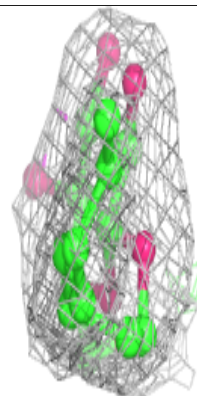
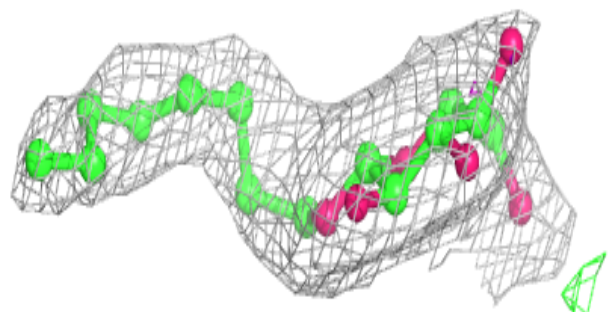
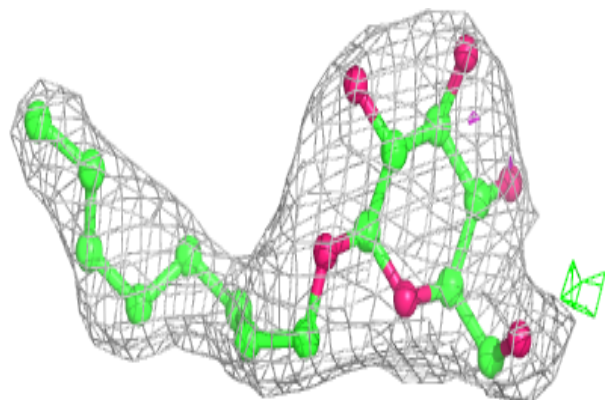


Electron density around BOG A 750:

$2mF_o-DF_c$ (at 0.7 rmsd) in gray
 mF_o-DF_c (at 3 rmsd) in purple (negative)
and green (positive)

**Electron density around BOG A 751:**

$2mF_o-DF_c$ (at 0.7 rmsd) in gray
 mF_o-DF_c (at 3 rmsd) in purple (negative)
and green (positive)



6.5 Other polymers [i](#)

There are no such residues in this entry.