



Full wwPDB X-ray Structure Validation Report ⓘ

Dec 17, 2023 – 09:18 AM EST

PDB ID : 4U6T
Title : Crystal structure of the Clostridium histolyticum colH collagenase polycystic kidney disease-like domain 2a at 1.76 Angstrom resolution
Authors : Bauer, R.; Janowska, K.; Sakon, J.; Matsushita, O.; Latimer, E.
Deposited on : 2014-07-29
Resolution : 1.76 Å(reported)

This is a Full wwPDB X-ray Structure Validation Report for a publicly released PDB entry.

We welcome your comments at validation@mail.wwpdb.org

A user guide is available at

<https://www.wwpdb.org/validation/2017/XrayValidationReportHelp>

with specific help available everywhere you see the ⓘ symbol.

The types of validation reports are described at

<http://www.wwpdb.org/validation/2017/FAQs#types>.

The following versions of software and data (see [references ⓘ](#)) were used in the production of this report:

MolProbity : 4.02b-467
Mogul : 1.8.5 (274361), CSD as541be (2020)
Xtriage (Phenix) : 1.13
EDS : 2.36
buster-report : 1.1.7 (2018)
Percentile statistics : 20191225.v01 (using entries in the PDB archive December 25th 2019)
Refmac : 5.8.0158
CCP4 : 7.0.044 (Gargrove)
Ideal geometry (proteins) : Engh & Huber (2001)
Ideal geometry (DNA, RNA) : Parkinson et al. (1996)
Validation Pipeline (wwPDB-VP) : 2.36

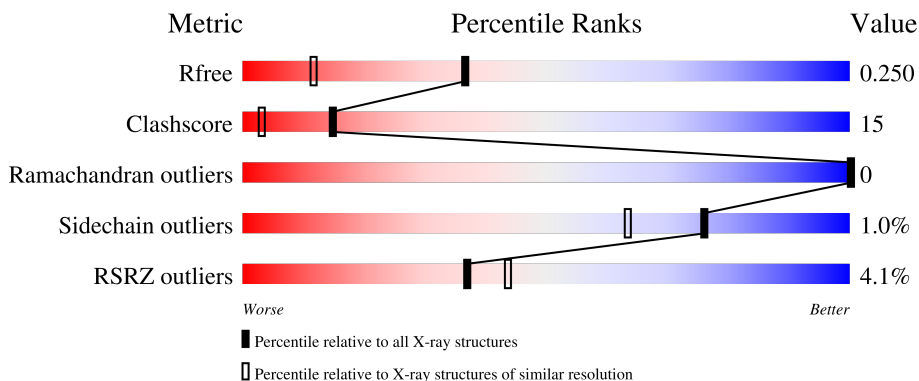
1 Overall quality at a glance

The following experimental techniques were used to determine the structure:

X-RAY DIFFRACTION

The reported resolution of this entry is 1.76 Å.

Percentile scores (ranging between 0-100) for global validation metrics of the entry are shown in the following graphic. The table shows the number of entries on which the scores are based.



Metric	Whole archive (#Entries)	Similar resolution (#Entries, resolution range(Å))
R_{free}	130704	2340 (1.76-1.76)
Clashscore	141614	2466 (1.76-1.76)
Ramachandran outliers	138981	2437 (1.76-1.76)
Sidechain outliers	138945	2437 (1.76-1.76)
RSRZ outliers	127900	2298 (1.76-1.76)

The table below summarises the geometric issues observed across the polymeric chains and their fit to the electron density. The red, orange, yellow and green segments of the lower bar indicate the fraction of residues that contain outliers for ≥ 3 , 2, 1 and 0 types of geometric quality criteria respectively. A grey segment represents the fraction of residues that are not modelled. The numeric value for each fraction is indicated below the corresponding segment, with a dot representing fractions $\leq 5\%$. The upper red bar (where present) indicates the fraction of residues that have poor fit to the electron density. The numeric value is given above the bar.

Mol	Chain	Length	Quality of chain
1	A	86	 92% 8%
1	B	86	 84% 15%
1	C	86	 87% 13% 7%
1	D	86	 88% 12% 7%

The following table lists non-polymeric compounds, carbohydrate monomers and non-standard

residues in protein, DNA, RNA chains that are outliers for geometric or electron-density-fit criteria:

Mol	Type	Chain	Res	Chirality	Geometry	Clashes	Electron density
2	P33	B	801	-	-	X	-
2	P33	C	801	-	-	X	-

2 Entry composition i

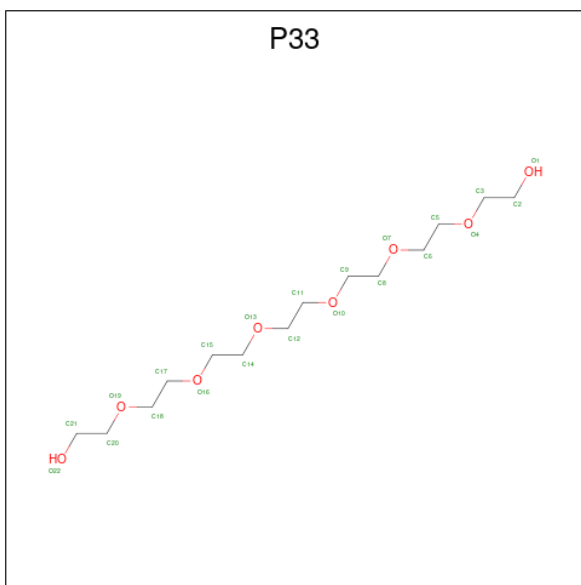
There are 3 unique types of molecules in this entry. The entry contains 3930 atoms, of which 0 are hydrogens and 0 are deuteriums.

In the tables below, the ZeroOcc column contains the number of atoms modelled with zero occupancy, the AltConf column contains the number of residues with at least one atom in alternate conformation and the Trace column contains the number of residues modelled with at most 2 atoms.

- Molecule 1 is a protein called ColH protein.

Mol	Chain	Residues	Atoms			ZeroOcc	AltConf	Trace	
			Total	C	N				O
1	A	86	676	419	107	150	0	3	0
1	B	86	679	422	107	150	0	2	0
1	C	86	679	422	108	149	0	3	0
1	D	86	680	421	107	152	0	3	0

- Molecule 2 is 3,6,9,12,15,18-HEXA-OXAICOSANE-1,20-DIOL (three-letter code: P33) (formula: C₁₄H₃₀O₈).



Mol	Chain	Residues	Atoms			ZeroOcc	AltConf
			Total	C	O		
2	A	1	22	14	8	0	0
2	A	1	22	14	8	0	0

Continued on next page...

Continued from previous page...

Mol	Chain	Residues	Atoms			ZeroOcc	AltConf
2	B	1	Total	C	O	0	0
			22	14	8		
2	C	1	Total	C	O	0	0
			22	14	8		
2	C	1	Total	C	O	0	0
			22	14	8		

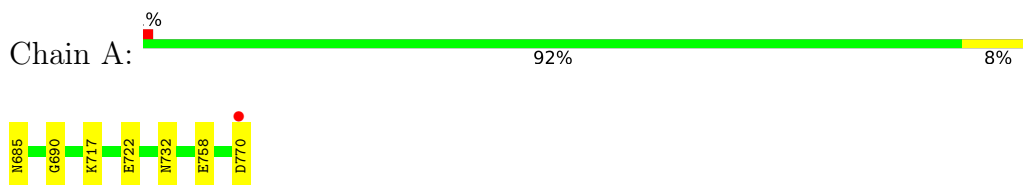
- Molecule 3 is water.

Mol	Chain	Residues	Atoms		ZeroOcc	AltConf
3	A	313	Total	O	0	0
			313	313		
3	B	279	Total	O	0	0
			279	279		
3	C	253	Total	O	0	0
			253	253		
3	D	261	Total	O	0	0
			261	261		

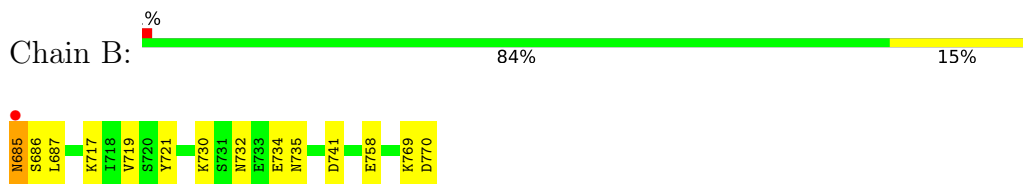
3 Residue-property plots [i](#)

These plots are drawn for all protein, RNA, DNA and oligosaccharide chains in the entry. The first graphic for a chain summarises the proportions of the various outlier classes displayed in the second graphic. The second graphic shows the sequence view annotated by issues in geometry and electron density. Residues are color-coded according to the number of geometric quality criteria for which they contain at least one outlier: green = 0, yellow = 1, orange = 2 and red = 3 or more. A red dot above a residue indicates a poor fit to the electron density ($RSRZ > 2$). Stretches of 2 or more consecutive residues without any outlier are shown as a green connector. Residues present in the sample, but not in the model, are shown in grey.

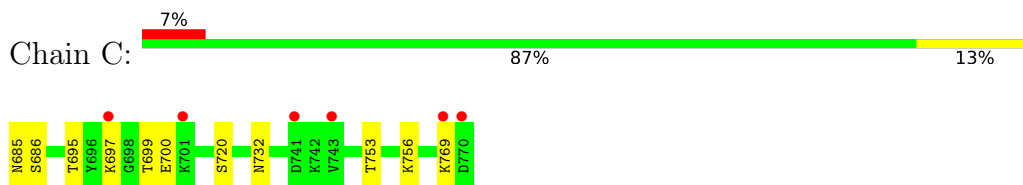
- Molecule 1: ColH protein



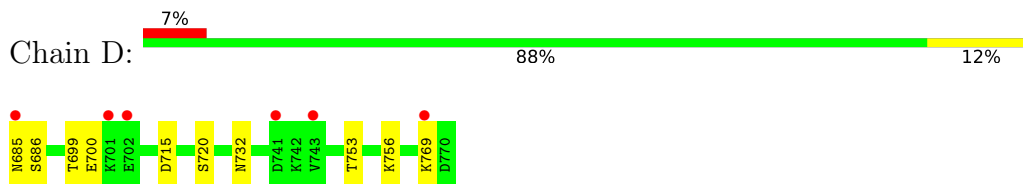
- Molecule 1: ColH protein



- Molecule 1: ColH protein



- Molecule 1: ColH protein



4 Data and refinement statistics

Property	Value	Source
Space group	P 61	Depositor
Cell constants a, b, c, α , β , γ	88.33Å 88.33Å 123.56Å 90.00° 90.00° 120.00°	Depositor
Resolution (Å)	65.04 – 1.76 65.04 – 1.76	Depositor EDS
% Data completeness (in resolution range)	99.4 (65.04-1.76) 99.4 (65.04-1.76)	Depositor EDS
R_{merge}	0.07	Depositor
R_{sym}	(Not available)	Depositor
$\langle I/\sigma(I) \rangle$ ¹	2.02 (at 1.76Å)	Xtrriage
Refinement program	REFMAC 5.5.0109	Depositor
R, R_{free}	0.207 , 0.272 0.207 , 0.250	Depositor DCC
R_{free} test set	2731 reflections (5.09%)	wwPDB-VP
Wilson B-factor (Å ²)	26.6	Xtrriage
Anisotropy	0.159	Xtrriage
Bulk solvent k_{sol} (e/Å ³), B_{sol} (Å ²)	0.34 , 28.9	EDS
L-test for twinning ²	$\langle L \rangle = 0.48$, $\langle L^2 \rangle = 0.31$	Xtrriage
Estimated twinning fraction	0.207 for h,-h-k,-l	Xtrriage
F_o, F_c correlation	0.95	EDS
Total number of atoms	3930	wwPDB-VP
Average B, all atoms (Å ²)	38.0	wwPDB-VP

Xtrriage's analysis on translational NCS is as follows: *The largest off-origin peak in the Patterson function is 4.58% of the height of the origin peak. No significant pseudotranslation is detected.*

¹Intensities estimated from amplitudes.

²Theoretical values of $\langle |L| \rangle$, $\langle L^2 \rangle$ for acentric reflections are 0.5, 0.333 respectively for untwinned datasets, and 0.375, 0.2 for perfectly twinned datasets.

5 Model quality [i](#)

5.1 Standard geometry [i](#)

Bond lengths and bond angles in the following residue types are not validated in this section: P33

The Z score for a bond length (or angle) is the number of standard deviations the observed value is removed from the expected value. A bond length (or angle) with $|Z| > 5$ is considered an outlier worth inspection. RMSZ is the root-mean-square of all Z scores of the bond lengths (or angles).

Mol	Chain	Bond lengths		Bond angles	
		RMSZ	# Z >5	RMSZ	# Z >5
1	A	0.63	0/705	0.70	0/947
1	B	0.63	0/701	0.65	0/942
1	C	0.53	0/701	0.59	0/942
1	D	0.54	0/706	0.60	0/950
All	All	0.58	0/2813	0.64	0/3781

There are no bond length outliers.

There are no bond angle outliers.

There are no chirality outliers.

There are no planarity outliers.

5.2 Too-close contacts [i](#)

In the following table, the Non-H and H(model) columns list the number of non-hydrogen atoms and hydrogen atoms in the chain respectively. The H(added) column lists the number of hydrogen atoms added and optimized by MolProbity. The Clashes column lists the number of clashes within the asymmetric unit, whereas Symm-Clashes lists symmetry-related clashes.

Mol	Chain	Non-H	H(model)	H(added)	Clashes	Symm-Clashes
1	A	676	0	637	9	1
1	B	679	0	639	16	1
1	C	679	0	639	11	1
1	D	680	0	633	9	1
2	A	44	0	60	11	0
2	B	22	0	30	19	0
2	C	44	0	60	20	0
3	A	313	0	0	14	2
3	B	279	0	0	17	1

Continued on next page...

Continued from previous page...

Mol	Chain	Non-H	H(model)	H(added)	Clashes	Symm-Clashes
3	C	253	0	0	15	2
3	D	261	0	0	6	1
All	All	3930	0	2698	84	5

The all-atom clashscore is defined as the number of clashes found per 1000 atoms (including hydrogen atoms). The all-atom clashscore for this structure is 15.

All (84) close contacts within the same asymmetric unit are listed below, sorted by their clash magnitude.

Atom-1	Atom-2	Interatomic distance (Å)	Clash overlap (Å)
2:B:801:P33:H122	3:B:902:HOH:O	1.27	1.29
1:A:722:GLU:HG3	3:B:1038:HOH:O	1.41	1.20
2:B:801:P33:H151	2:B:801:P33:H92	1.34	1.04
2:C:802:P33:H142	3:C:906:HOH:O	1.56	1.03
1:B:735:ASN:HD22	2:B:801:P33:H121	1.24	1.01
2:B:801:P33:H112	3:B:972:HOH:O	1.66	0.94
2:A:801:P33:H32	3:A:1130:HOH:O	1.68	0.93
1:B:735:ASN:HD22	2:B:801:P33:C12	1.83	0.92
2:A:802:P33:H212	3:D:820:HOH:O	1.78	0.84
1:B:769:LYS:NZ	3:B:1031:HOH:O	2.05	0.83
2:B:801:P33:H52	3:B:928:HOH:O	1.82	0.80
2:B:801:P33:H202	3:B:1086:HOH:O	1.81	0.79
3:A:1212:HOH:O	2:B:801:P33:H62	1.81	0.79
2:C:801:P33:H182	3:C:1144:HOH:O	1.82	0.78
1:A:758:GLU:OE1	3:A:1148:HOH:O	2.02	0.78
2:C:802:P33:H81	3:C:943:HOH:O	1.82	0.77
2:B:801:P33:C12	3:B:902:HOH:O	2.02	0.76
1:D:769:LYS:NZ	3:D:919:HOH:O	2.10	0.76
1:B:735:ASN:ND2	2:B:801:P33:H121	1.99	0.75
1:B:717:LYS:HD3	3:B:923:HOH:O	1.89	0.73
2:C:802:P33:H121	3:C:944:HOH:O	1.90	0.70
1:A:722:GLU:OE2	3:A:1017:HOH:O	2.12	0.68
1:A:685:ASN:HB2	3:A:914:HOH:O	1.95	0.67
1:A:690:GLY:HA3	3:A:1035:HOH:O	1.95	0.66
1:B:741:ASP:OD2	3:B:1054:HOH:O	2.12	0.66
1:C:695:THR:CG2	2:C:801:P33:H201	2.26	0.66
1:B:685:ASN:N	1:B:758:GLU:HG3	2.12	0.64
1:C:769:LYS:NZ	3:C:1001:HOH:O	2.30	0.64
2:A:802:P33:H171	3:D:823:HOH:O	1.97	0.64
2:C:801:P33:H211	3:C:1087:HOH:O	1.99	0.62
1:D:685:ASN:HB3	1:D:715[B]:ASP:OD2	1.99	0.62

Continued on next page...

Continued from previous page...

Atom-1	Atom-2	Interatomic distance (Å)	Clash overlap (Å)
1:B:735:ASN:HB2	2:B:801:P33:H121	1.80	0.62
2:A:801:P33:H182	3:A:1069:HOH:O	2.01	0.60
1:D:686:SER:OG	1:D:715[A]:ASP:OD2	2.18	0.60
1:A:685:ASN:O	2:A:802:P33:H202	2.02	0.60
2:A:801:P33:C3	3:A:1130:HOH:O	2.37	0.59
1:C:720[A]:SER:OG	1:C:753:THR:HB	2.02	0.59
1:D:720[B]:SER:OG	1:D:753:THR:HB	2.06	0.56
2:B:801:P33:H81	3:B:1162:HOH:O	2.03	0.56
2:B:801:P33:O1	3:B:955:HOH:O	2.18	0.56
2:C:801:P33:C18	3:C:1144:HOH:O	2.48	0.54
2:A:802:P33:H141	3:A:914:HOH:O	2.08	0.53
1:A:722:GLU:CG	3:B:1038:HOH:O	2.23	0.52
2:A:801:P33:H121	3:A:1212:HOH:O	2.08	0.52
2:C:802:P33:C14	3:C:906:HOH:O	2.34	0.51
1:C:697[A]:LYS:HB2	3:C:1153:HOH:O	2.11	0.51
1:C:697[B]:LYS:HB3	3:C:1153:HOH:O	2.10	0.51
2:B:801:P33:H82	3:B:1062:HOH:O	2.11	0.50
1:A:717:LYS:NZ	3:A:901:HOH:O	2.33	0.50
1:C:695:THR:HG23	2:C:801:P33:H152	1.93	0.50
2:C:801:P33:C21	2:C:801:P33:C17	2.89	0.50
2:C:801:P33:C17	2:C:801:P33:H212	2.41	0.50
1:C:695:THR:OG1	2:C:801:P33:H151	2.12	0.49
2:C:802:P33:H112	3:C:977:HOH:O	2.12	0.49
1:C:695:THR:HG21	2:C:801:P33:H201	1.92	0.49
2:A:801:P33:H122	3:A:1070:HOH:O	2.13	0.49
3:A:984:HOH:O	2:B:801:P33:H61	2.13	0.48
2:C:802:P33:H151	3:C:944:HOH:O	2.14	0.47
2:C:801:P33:H212	2:C:801:P33:H171	1.96	0.47
1:B:685:ASN:N	1:B:758:GLU:CG	2.77	0.47
2:C:802:P33:H121	2:C:802:P33:H151	1.52	0.47
2:A:801:P33:O22	2:A:801:P33:H181	2.15	0.46
2:C:802:P33:H201	2:C:802:P33:H171	1.57	0.46
1:B:730:LYS:HE2	3:B:1153:HOH:O	2.15	0.46
1:D:686:SER:HB2	3:D:821:HOH:O	2.15	0.46
2:C:801:P33:C21	3:C:1087:HOH:O	2.61	0.45
2:B:801:P33:C8	3:B:1162:HOH:O	2.63	0.45
1:C:685:ASN:N	3:C:904:HOH:O	2.48	0.45
2:B:801:P33:H91	3:B:913:HOH:O	2.15	0.45
1:D:685:ASN:N	3:D:933:HOH:O	2.49	0.45
1:D:769:LYS:HD2	3:D:1043:HOH:O	2.16	0.45
2:B:801:P33:H141	2:B:801:P33:H111	1.48	0.44

Continued on next page...

Continued from previous page...

Atom-1	Atom-2	Interatomic distance (Å)	Clash overlap (Å)
1:C:732[A]:ASN:ND2	3:C:1077:HOH:O	2.51	0.44
1:A:732:ASN:HB3	1:B:719:VAL:O	2.18	0.43
1:B:721:TYR:CD1	1:B:734:GLU:HG2	2.54	0.43
1:D:699:THR:HG22	1:D:700:GLU:N	2.34	0.43
1:B:735:ASN:ND2	2:B:801:P33:C12	2.66	0.42
1:C:699:THR:HG22	1:C:700:GLU:N	2.33	0.42
2:C:801:P33:C21	2:C:801:P33:H172	2.49	0.42
2:A:801:P33:H152	3:A:1159:HOH:O	2.20	0.42
1:B:687:LEU:HD23	1:B:758:GLU:HB3	2.02	0.41
1:B:730:LYS:NZ	3:B:1076:HOH:O	2.42	0.41
1:B:721:TYR:O	1:B:732:ASN:HA	2.21	0.40

All (5) symmetry-related close contacts are listed below. The label for Atom-2 includes the symmetry operator and encoded unit-cell translations to be applied.

Atom-1	Atom-2	Interatomic distance (Å)	Clash overlap (Å)
1:B:770:ASP:OD2	1:D:756:LYS:CD[5_654]	1.89	0.31
3:B:935:HOH:O	3:D:840:HOH:O[5_654]	1.93	0.27
3:A:962:HOH:O	3:C:977:HOH:O[4_645]	2.04	0.16
1:A:770:ASP:OD2	1:C:756:LYS:CD[6_445]	2.12	0.08
3:A:920:HOH:O	3:C:917:HOH:O[2_545]	2.19	0.01

5.3 Torsion angles [i](#)

5.3.1 Protein backbone [i](#)

In the following table, the Percentiles column shows the percent Ramachandran outliers of the chain as a percentile score with respect to all X-ray entries followed by that with respect to entries of similar resolution.

The Analysed column shows the number of residues for which the backbone conformation was analysed, and the total number of residues.

Mol	Chain	Analysed	Favoured	Allowed	Outliers	Percentiles	
1	A	87/86 (101%)	85 (98%)	2 (2%)	0	100	100
1	B	86/86 (100%)	86 (100%)	0	0	100	100
1	C	86/86 (100%)	86 (100%)	0	0	100	100
1	D	87/86 (101%)	87 (100%)	0	0	100	100

Continued on next page...

Continued from previous page...

Mol	Chain	Analysed	Favoured	Allowed	Outliers	Percentiles	
All	All	346/344 (101%)	344 (99%)	2 (1%)	0	100	100

There are no Ramachandran outliers to report.

5.3.2 Protein sidechains [i](#)

In the following table, the Percentiles column shows the percent sidechain outliers of the chain as a percentile score with respect to all X-ray entries followed by that with respect to entries of similar resolution.

The Analysed column shows the number of residues for which the sidechain conformation was analysed, and the total number of residues.

Mol	Chain	Analysed	Rotameric	Outliers	Percentiles	
1	A	79/76 (104%)	79 (100%)	0	100	100
1	B	78/76 (103%)	76 (97%)	2 (3%)	46	23
1	C	78/76 (103%)	77 (99%)	1 (1%)	69	54
1	D	79/76 (104%)	79 (100%)	0	100	100
All	All	314/304 (103%)	311 (99%)	3 (1%)	76	63

All (3) residues with a non-rotameric sidechain are listed below:

Mol	Chain	Res	Type
1	B	685	ASN
1	B	686	SER
1	C	686	SER

Sometimes sidechains can be flipped to improve hydrogen bonding and reduce clashes. All (1) such sidechains are listed below:

Mol	Chain	Res	Type
1	B	735	ASN

5.3.3 RNA [i](#)

There are no RNA molecules in this entry.

5.4 Non-standard residues in protein, DNA, RNA chains [i](#)

There are no non-standard protein/DNA/RNA residues in this entry.

5.5 Carbohydrates [i](#)

There are no monosaccharides in this entry.

5.6 Ligand geometry [i](#)

5 ligands are modelled in this entry.

In the following table, the Counts columns list the number of bonds (or angles) for which Mogul statistics could be retrieved, the number of bonds (or angles) that are observed in the model and the number of bonds (or angles) that are defined in the Chemical Component Dictionary. The Link column lists molecule types, if any, to which the group is linked. The Z score for a bond length (or angle) is the number of standard deviations the observed value is removed from the expected value. A bond length (or angle) with $|Z| > 2$ is considered an outlier worth inspection. RMSZ is the root-mean-square of all Z scores of the bond lengths (or angles).

Mol	Type	Chain	Res	Link	Bond lengths			Bond angles		
					Counts	RMSZ	# Z > 2	Counts	RMSZ	# Z > 2
2	P33	C	801	-	21,21,21	0.46	0	20,20,20	0.31	0
2	P33	A	802	-	21,21,21	0.49	0	20,20,20	0.25	0
2	P33	C	802	-	21,21,21	0.49	0	20,20,20	0.28	0
2	P33	B	801	-	21,21,21	0.47	0	20,20,20	0.22	0
2	P33	A	801	-	21,21,21	0.48	0	20,20,20	0.27	0

In the following table, the Chirals column lists the number of chiral outliers, the number of chiral centers analysed, the number of these observed in the model and the number defined in the Chemical Component Dictionary. Similar counts are reported in the Torsion and Rings columns. '-' means no outliers of that kind were identified.

Mol	Type	Chain	Res	Link	Chirals	Torsions	Rings
2	P33	C	801	-	-	13/19/19/19	-
2	P33	A	802	-	-	16/19/19/19	-
2	P33	C	802	-	-	10/19/19/19	-
2	P33	B	801	-	-	14/19/19/19	-
2	P33	A	801	-	-	10/19/19/19	-

There are no bond length outliers.

There are no bond angle outliers.

There are no chirality outliers.

All (63) torsion outliers are listed below:

Mol	Chain	Res	Type	Atoms
2	A	802	P33	C12-C11-O10-C9
2	C	802	P33	C17-C18-O19-C20
2	C	801	P33	C17-C18-O19-C20
2	B	801	P33	C11-C12-O13-C14
2	A	801	P33	O4-C5-C6-O7
2	A	802	P33	O10-C11-C12-O13
2	B	801	P33	O7-C8-C9-O10
2	C	802	P33	O4-C5-C6-O7
2	B	801	P33	O10-C11-C12-O13
2	C	801	P33	O7-C8-C9-O10
2	B	801	P33	C18-C17-O16-C15
2	C	802	P33	C15-C14-O13-C12
2	C	802	P33	O1-C2-C3-O4
2	A	801	P33	C21-C20-O19-C18
2	A	802	P33	O13-C14-C15-O16
2	C	801	P33	O4-C5-C6-O7
2	A	801	P33	O19-C20-C21-O22
2	A	802	P33	O19-C20-C21-O22
2	C	801	P33	O19-C20-C21-O22
2	A	801	P33	O13-C14-C15-O16
2	A	801	P33	C5-C6-O7-C8
2	C	801	P33	C18-C17-O16-C15
2	A	802	P33	O7-C8-C9-O10
2	A	802	P33	O16-C17-C18-O19
2	C	801	P33	O10-C11-C12-O13
2	A	801	P33	O1-C2-C3-O4
2	B	801	P33	O4-C5-C6-O7
2	B	801	P33	C17-C18-O19-C20
2	C	801	P33	C14-C15-O16-C17
2	C	801	P33	C5-C6-O7-C8
2	C	802	P33	C21-C20-O19-C18
2	C	802	P33	C2-C3-O4-C5
2	A	802	P33	C8-C9-O10-C11
2	A	801	P33	C8-C9-O10-C11
2	A	802	P33	C15-C14-O13-C12
2	B	801	P33	C14-C15-O16-C17
2	A	802	P33	C5-C6-O7-C8
2	B	801	P33	C9-C8-O7-C6
2	A	801	P33	C12-C11-O10-C9
2	C	802	P33	C5-C6-O7-C8

Continued on next page...

Continued from previous page...

Mol	Chain	Res	Type	Atoms
2	C	801	P33	C12-C11-O10-C9
2	A	802	P33	C17-C18-O19-C20
2	A	802	P33	C14-C15-O16-C17
2	A	801	P33	C17-C18-O19-C20
2	A	802	P33	C2-C3-O4-C5
2	B	801	P33	C8-C9-O10-C11
2	A	802	P33	O4-C5-C6-O7
2	A	802	P33	C11-C12-O13-C14
2	C	802	P33	O19-C20-C21-O22
2	C	802	P33	O13-C14-C15-O16
2	A	801	P33	C18-C17-O16-C15
2	B	801	P33	C12-C11-O10-C9
2	A	802	P33	C18-C17-O16-C15
2	B	801	P33	C5-C6-O7-C8
2	C	801	P33	O13-C14-C15-O16
2	C	802	P33	C9-C8-O7-C6
2	B	801	P33	C6-C5-O4-C3
2	C	801	P33	C6-C5-O4-C3
2	C	801	P33	O16-C17-C18-O19
2	B	801	P33	C15-C14-O13-C12
2	A	802	P33	C9-C8-O7-C6
2	B	801	P33	O16-C17-C18-O19
2	C	801	P33	C9-C8-O7-C6

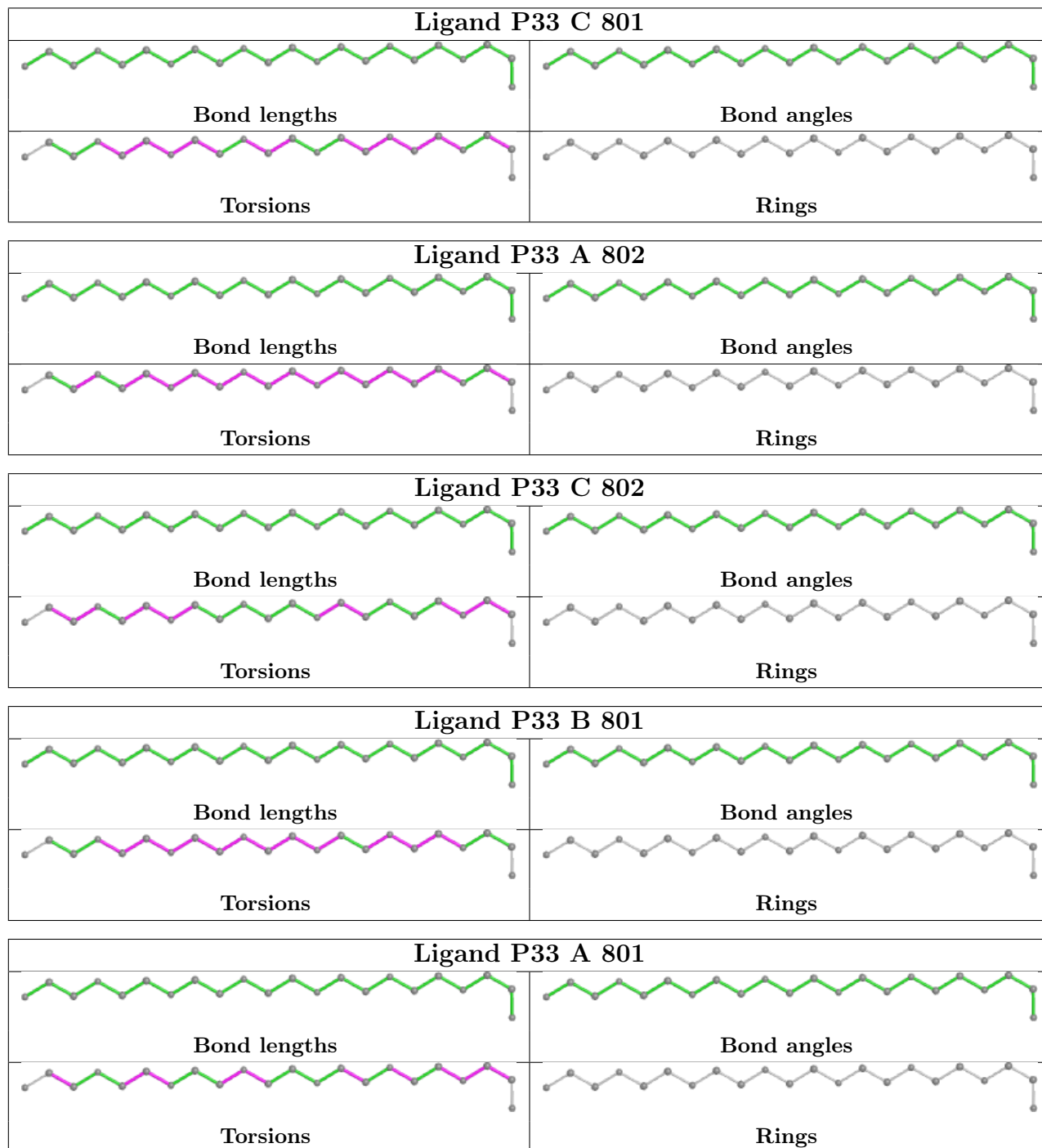
There are no ring outliers.

5 monomers are involved in 50 short contacts:

Mol	Chain	Res	Type	Clashes	Symm-Clashes
2	C	801	P33	12	0
2	A	802	P33	4	0
2	C	802	P33	8	0
2	B	801	P33	19	0
2	A	801	P33	7	0

The following is a two-dimensional graphical depiction of Mogul quality analysis of bond lengths, bond angles, torsion angles, and ring geometry for all instances of the Ligand of Interest. In addition, ligands with molecular weight > 250 and outliers as shown on the validation Tables will also be included. For torsion angles, if less than 5% of the Mogul distribution of torsion angles is within 10 degrees of the torsion angle in question, then that torsion angle is considered an outlier. Any bond that is central to one or more torsion angles identified as an outlier by Mogul will be highlighted in the graph. For rings, the root-mean-square deviation (RMSD) between the ring in question and similar rings identified by Mogul is calculated over all ring torsion angles. If the

average RMSD is greater than 60 degrees and the minimal RMSD between the ring in question and any Mogul-identified rings is also greater than 60 degrees, then that ring is considered an outlier. The outliers are highlighted in purple. The color gray indicates Mogul did not find sufficient equivalents in the CSD to analyse the geometry.



5.7 Other polymers [\(i\)](#)

There are no such residues in this entry.

5.8 Polymer linkage issues

There are no chain breaks in this entry.

6 Fit of model and data [i](#)

6.1 Protein, DNA and RNA chains [i](#)

In the following table, the column labelled ‘#RSRZ > 2’ contains the number (and percentage) of RSRZ outliers, followed by percent RSRZ outliers for the chain as percentile scores relative to all X-ray entries and entries of similar resolution. The OWAB column contains the minimum, median, 95th percentile and maximum values of the occupancy-weighted average B-factor per residue. The column labelled ‘Q < 0.9’ lists the number of (and percentage) of residues with an average occupancy less than 0.9.

Mol	Chain	Analysed	<RSRZ>	#RSRZ>2	OWAB(Å ²)	Q<0.9
1	A	86/86 (100%)	0.24	1 (1%) 79 84	21, 27, 45, 75	0
1	B	86/86 (100%)	0.20	1 (1%) 79 84	22, 27, 45, 82	0
1	C	86/86 (100%)	0.58	6 (6%) 16 21	22, 33, 63, 73	0
1	D	86/86 (100%)	0.54	6 (6%) 16 21	23, 33, 64, 74	0
All	All	344/344 (100%)	0.39	14 (4%) 37 44	21, 30, 60, 82	0

All (14) RSRZ outliers are listed below:

Mol	Chain	Res	Type	RSRZ
1	D	741	ASP	4.0
1	D	701	LYS	3.6
1	C	770	ASP	3.5
1	D	769	LYS	2.8
1	C	741	ASP	2.8
1	D	743	VAL	2.6
1	B	685	ASN	2.6
1	C	769	LYS	2.5
1	C	701	LYS	2.4
1	C	697[A]	LYS	2.3
1	D	685	ASN	2.3
1	A	770	ASP	2.2
1	D	702	GLU	2.1
1	C	743	VAL	2.0

6.2 Non-standard residues in protein, DNA, RNA chains [i](#)

There are no non-standard protein/DNA/RNA residues in this entry.

6.3 Carbohydrates [i](#)

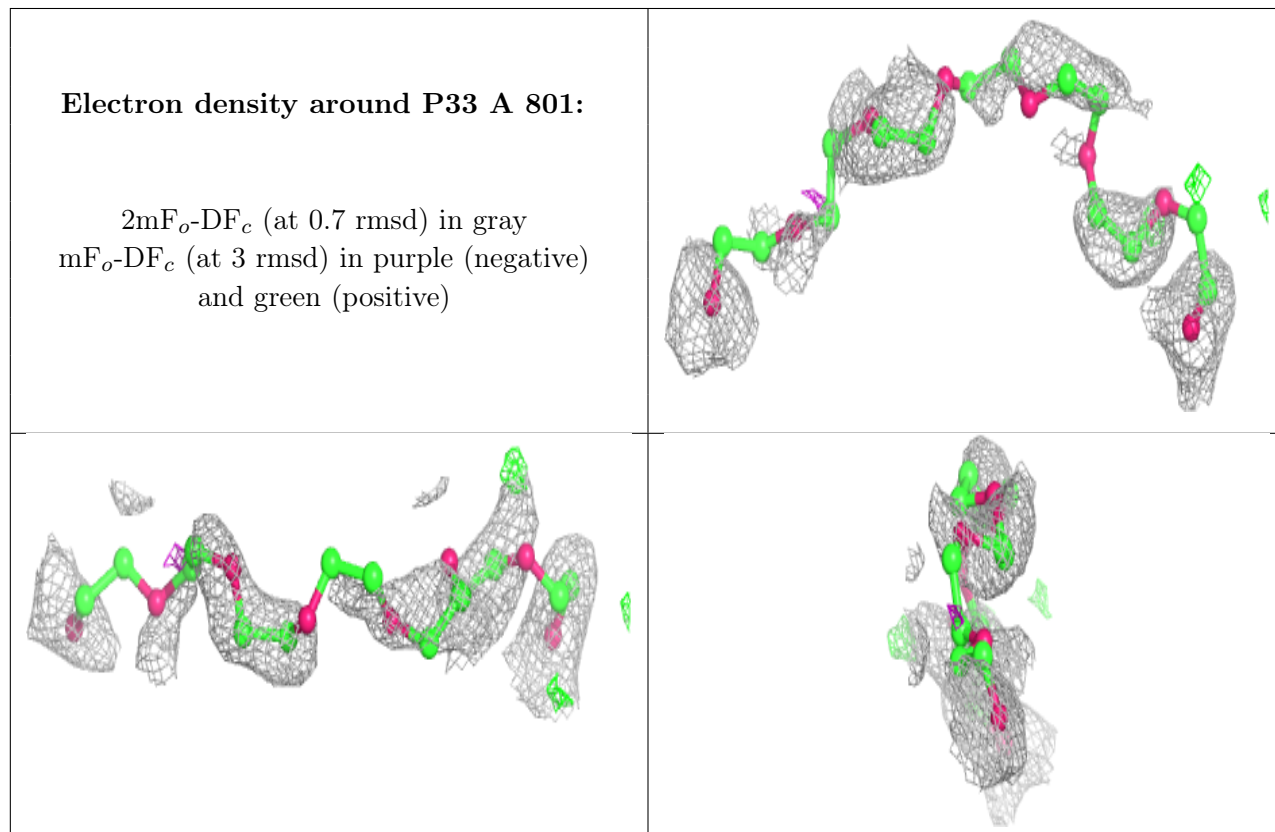
There are no monosaccharides in this entry.

6.4 Ligands [i](#)

In the following table, the Atoms column lists the number of modelled atoms in the group and the number defined in the chemical component dictionary. The B-factors column lists the minimum, median, 95th percentile and maximum values of B factors of atoms in the group. The column labelled 'Q< 0.9' lists the number of atoms with occupancy less than 0.9.

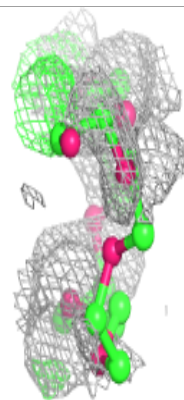
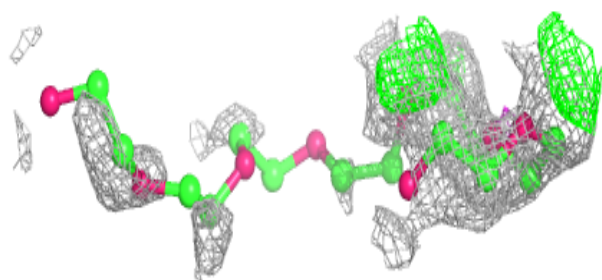
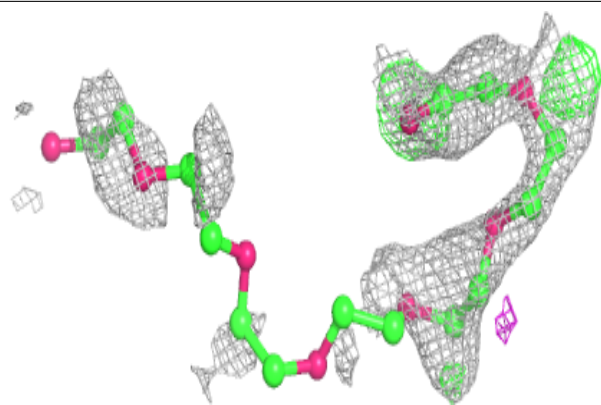
Mol	Type	Chain	Res	Atoms	RSCC	RSR	B-factors(Å ²)	Q<0.9
2	P33	A	801	22/22	0.57	0.30	36,67,104,105	22
2	P33	C	802	22/22	0.67	0.28	32,63,109,128	22
2	P33	C	801	22/22	0.69	0.22	34,61,90,104	22
2	P33	B	801	22/22	0.69	0.36	37,62,110,113	22
2	P33	A	802	22/22	0.73	0.25	32,69,108,118	22

The following is a graphical depiction of the model fit to experimental electron density of all instances of the Ligand of Interest. In addition, ligands with molecular weight > 250 and outliers as shown on the geometry validation Tables will also be included. Each fit is shown from different orientation to approximate a three-dimensional view.

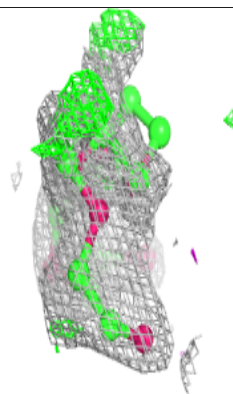
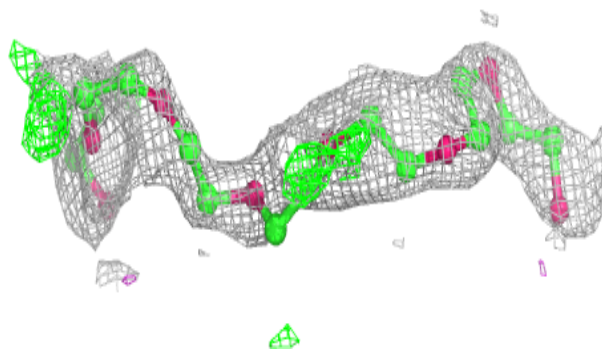
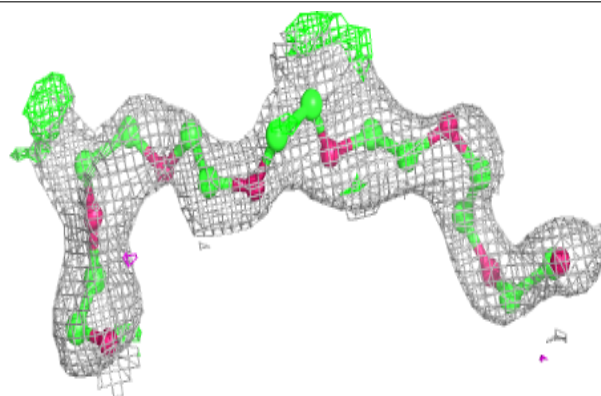


Electron density around P33 C 802:

$2mF_o-DF_c$ (at 0.7 rmsd) in gray
 mF_o-DF_c (at 3 rmsd) in purple (negative)
and green (positive)

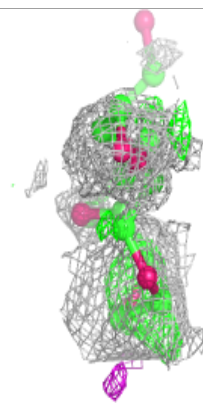
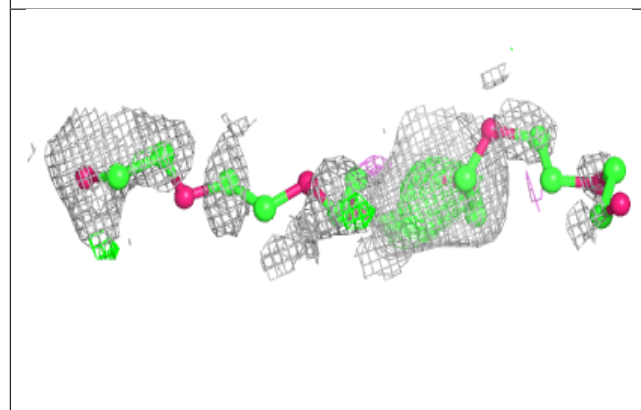
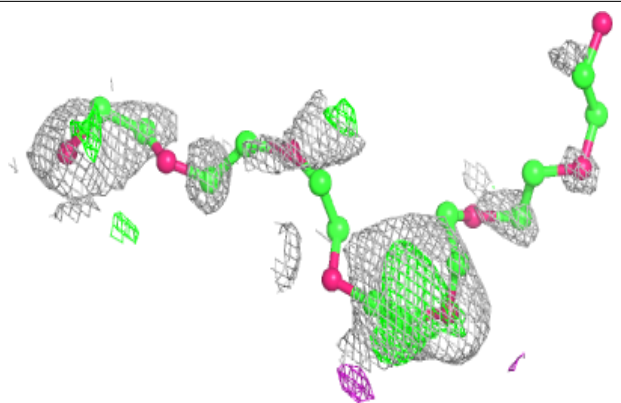
**Electron density around P33 C 801:**

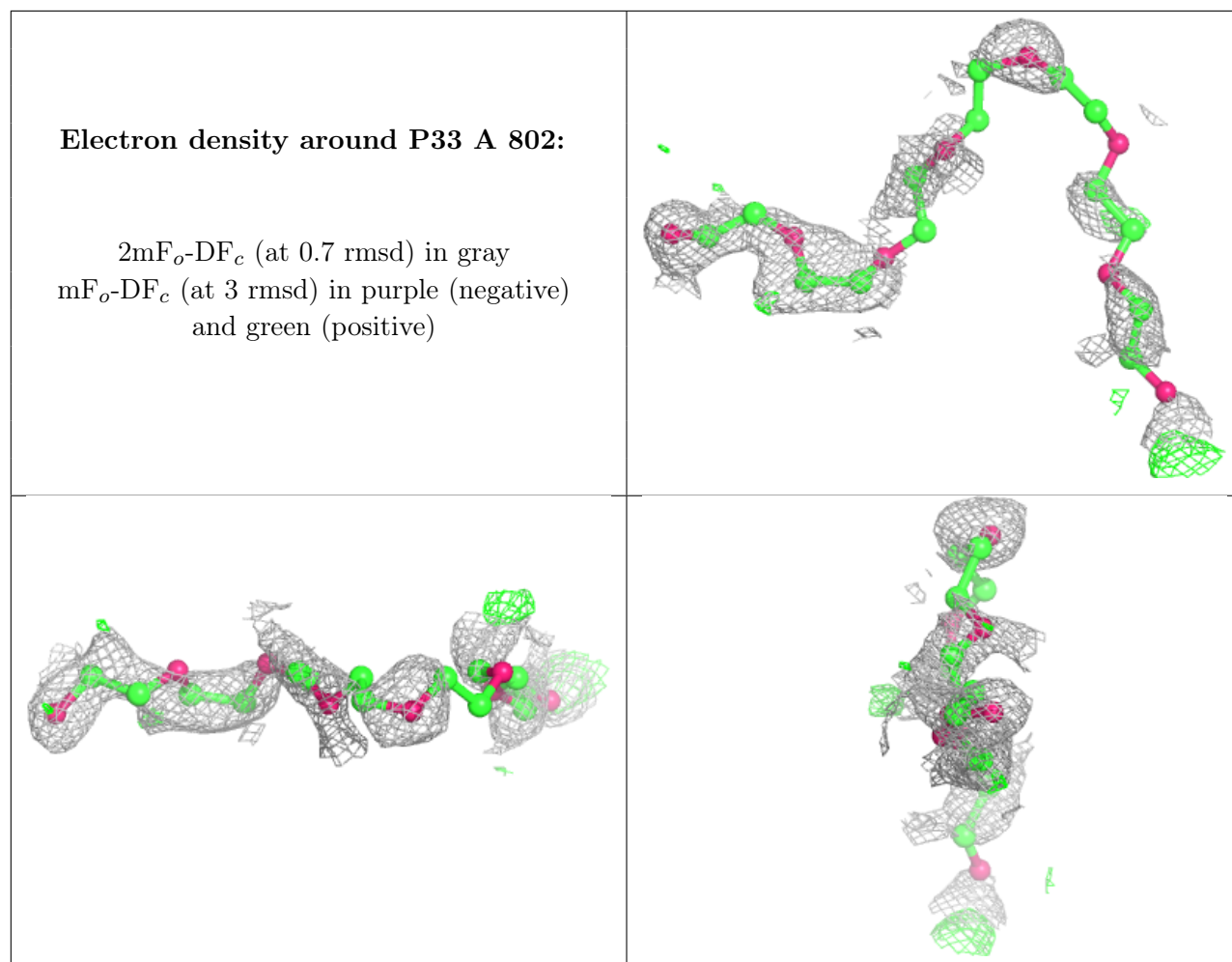
$2mF_o-DF_c$ (at 0.7 rmsd) in gray
 mF_o-DF_c (at 3 rmsd) in purple (negative)
and green (positive)



Electron density around P33 B 801:

$2mF_o-DF_c$ (at 0.7 rmsd) in gray
 mF_o-DF_c (at 3 rmsd) in purple (negative)
and green (positive)





6.5 Other polymers [i](#)

There are no such residues in this entry.