



Full wwPDB X-ray Structure Validation Report ⓘ

May 24, 2020 – 10:40 pm BST

PDB ID : 5U6B
Title : Structure of the Axl kinase domain in complex with a macrocyclic inhibitor
Authors : Gajiwala, K.S.; Grodsky, N.
Deposited on : 2016-12-07
Resolution : 2.84 Å(reported)

This is a Full wwPDB X-ray Structure Validation Report for a publicly released PDB entry.

We welcome your comments at validation@mail.wwpdb.org

A user guide is available at

<https://www.wwpdb.org/validation/2017/XrayValidationReportHelp>

with specific help available everywhere you see the ⓘ symbol.

The following versions of software and data (see [references ⓘ](#)) were used in the production of this report:

MolProbity : 4.02b-467
Mogul : 1.8.5 (274361), CSD as541be (2020)
Xtriage (Phenix) : 1.13
EDS : 2.11
buster-report : 1.1.7 (2018)
Percentile statistics : 20191225.v01 (using entries in the PDB archive December 25th 2019)
Refmac : 5.8.0158
CCP4 : 7.0.044 (Gargrove)
Ideal geometry (proteins) : Engh & Huber (2001)
Ideal geometry (DNA, RNA) : Parkinson et al. (1996)
Validation Pipeline (wwPDB-VP) : 2.11

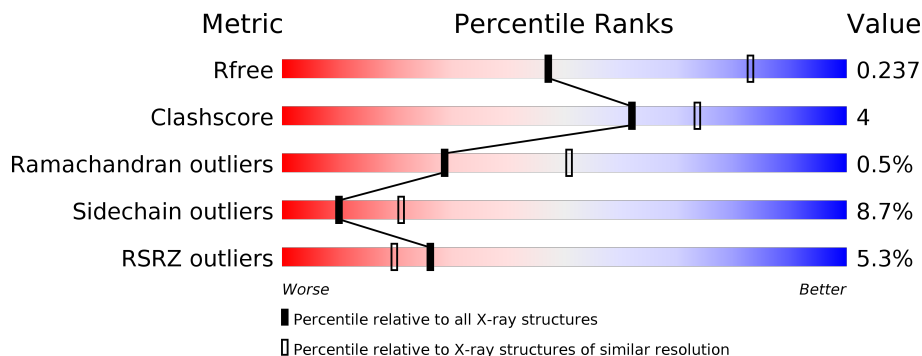
1 Overall quality at a glance

The following experimental techniques were used to determine the structure:

X-RAY DIFFRACTION

The reported resolution of this entry is 2.84 Å.

Percentile scores (ranging between 0-100) for global validation metrics of the entry are shown in the following graphic. The table shows the number of entries on which the scores are based.



Metric	Whole archive (#Entries)	Similar resolution (#Entries, resolution range(Å))
R_{free}	130704	1031 (2.86-2.82)
Clashscore	141614	1078 (2.86-2.82)
Ramachandran outliers	138981	1050 (2.86-2.82)
Sidechain outliers	138945	1051 (2.86-2.82)
RSRZ outliers	127900	1019 (2.86-2.82)

The table below summarises the geometric issues observed across the polymeric chains and their fit to the electron density. The red, orange, yellow and green segments on the lower bar indicate the fraction of residues that contain outliers for ≥ 3 , 2, 1 and 0 types of geometric quality criteria respectively. A grey segment represents the fraction of residues that are not modelled. The numeric value for each fraction is indicated below the corresponding segment, with a dot representing fractions $\leq 5\%$. The upper red bar (where present) indicates the fraction of residues that have poor fit to the electron density. The numeric value is given above the bar.

Mol	Chain	Length	Quality of chain
1	A	307	 4% 74% 12% • 12%
1	B	307	 5% 77% 16% • 5%
1	C	307	 3% 75% 11% • 12%
1	D	307	 7% 77% 16% • 5%

2 Entry composition [i](#)

There are 2 unique types of molecules in this entry. The entry contains 9046 atoms, of which 0 are hydrogens and 0 are deuteriums.

In the tables below, the ZeroOcc column contains the number of atoms modelled with zero occupancy, the AltConf column contains the number of residues with at least one atom in alternate conformation and the Trace column contains the number of residues modelled with at most 2 atoms.

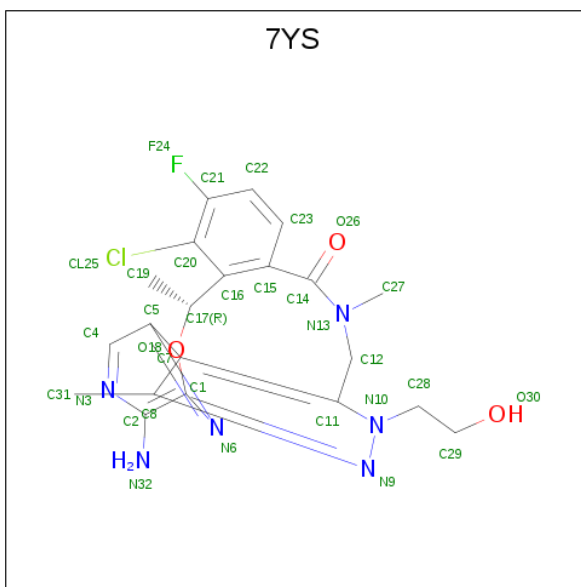
- Molecule 1 is a protein called Tyrosine-protein kinase receptor UFO.

Mol	Chain	Residues	Atoms					ZeroOcc	AltConf	Trace
			Total	C	N	O	S			
1	A	270	2143	1363	363	397	20	0	0	0
1	B	291	2316	1474	393	428	21	0	0	0
1	C	270	2143	1363	363	397	20	0	0	0
1	D	291	2316	1474	393	428	21	0	0	0

There are 8 discrepancies between the modelled and reference sequences:

Chain	Residue	Modelled	Actual	Comment	Reference
A	512	GLY	-	expression tag	UNP P30530
A	513	SER	-	expression tag	UNP P30530
B	512	GLY	-	expression tag	UNP P30530
B	513	SER	-	expression tag	UNP P30530
C	512	GLY	-	expression tag	UNP P30530
C	513	SER	-	expression tag	UNP P30530
D	512	GLY	-	expression tag	UNP P30530
D	513	SER	-	expression tag	UNP P30530


- Molecule 2 is (10R)-7-amino-11-chloro-12-fluoro-1-(2-hydroxyethyl)-3,10,16-trimethyl-16,17-dihydro-1H-8,4-(azeno)pyrazolo[4,3-h][2,5,11]benzoxadiazacyclotetradecin-15(10H)-one (three-letter code: 7YS) (formula: C₂₁H₂₂ClFN₆O₃).

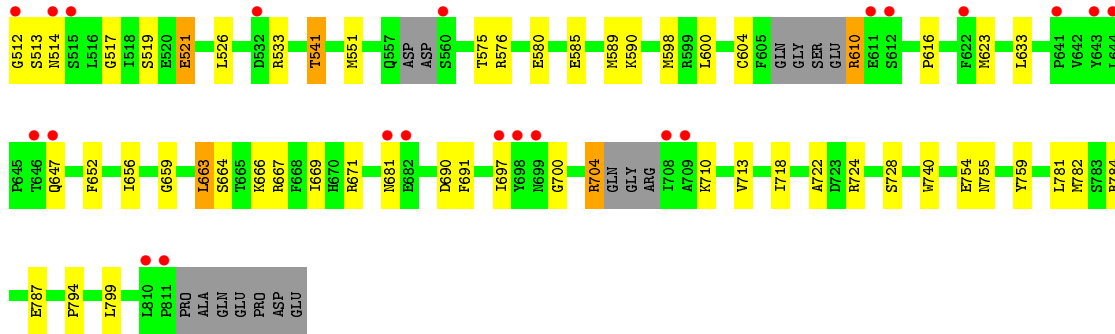


Mol	Chain	Residues	Atoms					ZeroOcc	AltConf	
			Total	C	Cl	F	N			O
2	A	1	Total	C	Cl	F	N	O	0	0
			32	21	1	1	6	3		
2	B	1	Total	C	Cl	F	N	O	0	0
			32	21	1	1	6	3		
2	C	1	Total	C	Cl	F	N	O	0	0
			32	21	1	1	6	3		
2	D	1	Total	C	Cl	F	N	O	0	0
			32	21	1	1	6	3		

GLU
PRO
ASP
GLU

• Molecule 1: Tyrosine-protein kinase receptor UFO

Chain D: 



4 Data and refinement statistics

Property	Value	Source
Space group	P 1 21 1	Depositor
Cell constants a, b, c, α , β , γ	81.68Å 100.70Å 81.92Å 90.00° 93.97° 90.00°	Depositor
Resolution (Å)	59.81 – 2.84 81.72 – 2.84	Depositor EDS
% Data completeness (in resolution range)	99.3 (59.81-2.84) 99.3 (81.72-2.84)	Depositor EDS
R_{merge}	(Not available)	Depositor
R_{sym}	0.10	Depositor
$\langle I/\sigma(I) \rangle$ ¹	2.12 (at 2.82Å)	Xtrriage
Refinement program	BUSTER 2.11.7	Depositor
R, R_{free}	0.211 , 0.239 0.229 , 0.237	Depositor DCC
R_{free} test set	771 reflections (2.45%)	wwPDB-VP
Wilson B-factor (Å ²)	52.9	Xtrriage
Anisotropy	0.396	Xtrriage
Bulk solvent k_{sol} (e/Å ³), B_{sol} (Å ²)	0.35 , 53.9	EDS
L-test for twinning ²	$\langle L \rangle = 0.49$, $\langle L^2 \rangle = 0.32$	Xtrriage
Estimated twinning fraction	0.015 for l,-k,h	Xtrriage
F_o, F_c correlation	0.91	EDS
Total number of atoms	9046	wwPDB-VP
Average B, all atoms (Å ²)	56.0	wwPDB-VP

Xtrriage's analysis on translational NCS is as follows: *The largest off-origin peak in the Patterson function is 5.18% of the height of the origin peak. No significant pseudotranslation is detected.*

¹ Intensities estimated from amplitudes.

² Theoretical values of $\langle |L| \rangle$, $\langle L^2 \rangle$ for acentric reflections are 0.5, 0.333 respectively for untwinned datasets, and 0.375, 0.2 for perfectly twinned datasets.

5 Model quality [i](#)

5.1 Standard geometry [i](#)

Bond lengths and bond angles in the following residue types are not validated in this section: 7YS

The Z score for a bond length (or angle) is the number of standard deviations the observed value is removed from the expected value. A bond length (or angle) with $|Z| > 5$ is considered an outlier worth inspection. RMSZ is the root-mean-square of all Z scores of the bond lengths (or angles).

Mol	Chain	Bond lengths		Bond angles	
		RMSZ	# Z >5	RMSZ	# Z >5
1	A	0.46	0/2186	0.66	0/2950
1	B	0.48	0/2361	0.69	0/3181
1	C	0.46	0/2186	0.66	0/2950
1	D	0.47	0/2361	0.69	0/3181
All	All	0.47	0/9094	0.68	0/12262

There are no bond length outliers.

There are no bond angle outliers.

There are no chirality outliers.

There are no planarity outliers.

5.2 Too-close contacts [i](#)

In the following table, the Non-H and H(model) columns list the number of non-hydrogen atoms and hydrogen atoms in the chain respectively. The H(added) column lists the number of hydrogen atoms added and optimized by MolProbity. The Clashes column lists the number of clashes within the asymmetric unit, whereas Symm-Clashes lists symmetry related clashes.

Mol	Chain	Non-H	H(model)	H(added)	Clashes	Symm-Clashes
1	A	2143	0	2144	16	0
1	B	2316	0	2316	27	0
1	C	2143	0	2144	12	0
1	D	2316	0	2316	28	0
2	A	32	0	0	0	0
2	B	32	0	0	0	0
2	C	32	0	0	0	0
2	D	32	0	0	0	0
All	All	9046	0	8920	79	0

The all-atom clashscore is defined as the number of clashes found per 1000 atoms (including hydrogen atoms). The all-atom clashscore for this structure is 4.

All (79) close contacts within the same asymmetric unit are listed below, sorted by their clash magnitude.

Atom-1	Atom-2	Interatomic distance (Å)	Clash overlap (Å)
1:D:713:VAL:HB	1:D:755:ASN:HD22	1.59	0.67
1:C:667:ARG:HD3	1:D:754:GLU:HG3	1.78	0.66
1:B:713:VAL:HB	1:B:755:ASN:HD22	1.60	0.66
1:A:667:ARG:HD3	1:B:754:GLU:HG3	1.79	0.63
1:B:589:MET:HB3	1:B:600:LEU:HB2	1.81	0.61
1:A:573:ILE:HD13	1:A:579:LEU:HD23	1.81	0.60
1:B:610:ARG:HB2	1:B:614:PRO:HA	1.83	0.59
1:B:512:GLY:N	1:B:513:SER:HG	2.00	0.58
1:D:740:TRP:HD1	1:D:782:MET:HE1	1.69	0.58
1:D:781:LEU:HD22	1:D:799:LEU:HD23	1.86	0.58
1:B:519:SER:HA	1:B:576:ARG:HH21	1.69	0.58
1:B:740:TRP:HD1	1:B:782:MET:HE1	1.68	0.57
1:A:713:VAL:HB	1:A:755:ASN:HD22	1.69	0.57
1:B:533:ARG:HA	1:B:604:CYS:SG	2.44	0.57
1:C:713:VAL:HB	1:C:755:ASN:HD22	1.69	0.57
1:D:533:ARG:HA	1:D:604:CYS:SG	2.45	0.56
1:C:541:THR:HA	1:C:551:MET:HG3	1.87	0.56
1:A:812:PRO:HB2	1:A:813:ALA:HB2	1.87	0.56
1:D:519:SER:HA	1:D:576:ARG:HH21	1.69	0.56
1:A:604:CYS:HB2	1:A:617:VAL:HB	1.86	0.56
1:B:781:LEU:HD22	1:B:799:LEU:HD23	1.88	0.55
1:D:512:GLY:N	1:D:513:SER:HG	2.04	0.55
1:C:812:PRO:HB2	1:C:813:ALA:HB2	1.89	0.54
1:B:740:TRP:HB2	1:B:782:MET:HE3	1.91	0.53
1:B:568:THR:HG22	1:B:617:VAL:HG22	1.91	0.53
1:A:592:PHE:O	1:A:599:ARG:HG2	2.09	0.52
1:A:713:VAL:HA	1:A:716:ILE:HD12	1.91	0.52
1:B:589:MET:HE1	1:B:598:MET:HG3	1.92	0.51
1:D:740:TRP:HB2	1:D:782:MET:HE3	1.93	0.51
1:C:568:THR:HG22	1:C:617:VAL:HG22	1.93	0.50
1:B:541:THR:HA	1:B:551:MET:HG2	1.94	0.50
1:D:585:GLU:HG3	1:D:691:PHE:HB2	1.94	0.49
1:C:713:VAL:HA	1:C:716:ILE:HD12	1.94	0.49
1:D:659:GLY:O	1:D:663:LEU:HD22	2.11	0.49
1:C:784:ARG:HB3	1:C:794:PRO:HD3	1.94	0.49
1:A:784:ARG:HB3	1:A:794:PRO:HD3	1.94	0.48
1:D:610:ARG:O	1:D:610:ARG:HG2	2.14	0.47

Continued on next page...

Continued from previous page...

Atom-1	Atom-2	Interatomic distance (Å)	Clash overlap (Å)
1:A:568:THR:HG22	1:A:617:VAL:HG22	1.96	0.47
1:B:681:ASN:ND2	1:B:685:SER:H	2.12	0.47
1:A:667:ARG:CD	1:B:754:GLU:HG3	2.44	0.47
1:C:667:ARG:CD	1:D:754:GLU:HG3	2.44	0.46
1:D:589:MET:HE1	1:D:598:MET:HG3	1.97	0.46
1:D:671:ARG:NH2	1:D:704:ARG:HE	2.13	0.46
1:D:541:THR:HA	1:D:551:MET:HG2	1.98	0.46
1:A:541:THR:HA	1:A:551:MET:HG3	1.97	0.46
1:B:610:ARG:HG2	1:B:610:ARG:O	2.15	0.45
1:B:659:GLY:O	1:B:663:LEU:HD22	2.16	0.45
1:B:671:ARG:NH2	1:B:704:ARG:HE	2.15	0.45
1:B:740:TRP:HD1	1:B:782:MET:CE	2.30	0.45
1:D:517:GLY:O	1:D:576:ARG:HG3	2.17	0.45
1:D:784:ARG:HB3	1:D:794:PRO:HD3	1.99	0.45
1:C:652:PHE:O	1:C:656:ILE:HG12	2.16	0.44
1:B:784:ARG:HB3	1:B:794:PRO:HD3	2.00	0.44
1:D:740:TRP:HD1	1:D:782:MET:CE	2.29	0.44
1:C:558:ASP:O	1:C:559:ASP:HB2	2.18	0.44
1:D:713:VAL:HB	1:D:755:ASN:ND2	2.31	0.43
1:D:671:ARG:HH22	1:D:704:ARG:HE	1.65	0.43
1:A:652:PHE:O	1:A:656:ILE:HG12	2.19	0.43
1:D:604:CYS:O	1:D:616:PRO:HA	2.19	0.43
1:C:532:ASP:HB3	1:C:535:LYS:HD2	2.01	0.43
1:D:722:ALA:HB2	1:D:759:TYR:CE1	2.54	0.43
1:A:573:ILE:HD12	1:A:616:PRO:HD3	2.01	0.43
1:A:548:GLY:HA2	1:A:570:LYS:HB2	2.01	0.42
1:B:722:ALA:HB2	1:B:759:TYR:CE1	2.54	0.42
1:B:652:PHE:O	1:B:656:ILE:HG12	2.19	0.42
1:B:704:ARG:HG2	1:B:724:ARG:HB3	2.02	0.42
1:A:651:LYS:HD2	1:A:807:LEU:HD21	2.02	0.42
1:B:671:ARG:HH22	1:B:704:ARG:HE	1.66	0.42
1:C:529:VAL:HG22	1:C:603:VAL:HG22	2.02	0.42
1:D:512:GLY:HA3	1:D:513:SER:HA	1.92	0.42
1:D:652:PHE:O	1:D:656:ILE:HG12	2.20	0.42
1:A:635:SER:HB3	1:A:745:ARG:HH21	1.85	0.42
1:B:548:GLY:HA2	1:B:570:LYS:HB2	2.00	0.42
1:D:514:ASN:HB3	1:D:576:ARG:NH1	2.35	0.41
1:D:669:ILE:HG22	1:D:671:ARG:HG3	2.02	0.41
1:B:517:GLY:O	1:B:576:ARG:HG3	2.20	0.41
1:D:704:ARG:HG2	1:D:724:ARG:HB3	2.02	0.41
1:B:656:ILE:HB	1:B:735:PHE:HE1	1.86	0.40

Continued on next page...

Continued from previous page...

Atom-1	Atom-2	Interatomic distance (Å)	Clash overlap (Å)
1:D:521:GLU:H	1:D:521:GLU:HG2	1.72	0.40

There are no symmetry-related clashes.

5.3 Torsion angles [i](#)

5.3.1 Protein backbone [i](#)

In the following table, the Percentiles column shows the percent Ramachandran outliers of the chain as a percentile score with respect to all X-ray entries followed by that with respect to entries of similar resolution.

The Analysed column shows the number of residues for which the backbone conformation was analysed, and the total number of residues.

Mol	Chain	Analysed	Favoured	Allowed	Outliers	Percentiles
1	A	264/307 (86%)	255 (97%)	7 (3%)	2 (1%)	19 38
1	B	283/307 (92%)	265 (94%)	17 (6%)	1 (0%)	34 56
1	C	264/307 (86%)	250 (95%)	12 (4%)	2 (1%)	19 38
1	D	283/307 (92%)	267 (94%)	15 (5%)	1 (0%)	34 56
All	All	1094/1228 (89%)	1037 (95%)	51 (5%)	6 (0%)	29 51

All (6) Ramachandran outliers are listed below:

Mol	Chain	Res	Type
1	A	558	ASP
1	A	559	ASP
1	C	558	ASP
1	C	559	ASP
1	B	700	GLY
1	D	700	GLY

5.3.2 Protein sidechains [i](#)

In the following table, the Percentiles column shows the percent sidechain outliers of the chain as a percentile score with respect to all X-ray entries followed by that with respect to entries of similar resolution.

The Analysed column shows the number of residues for which the sidechain conformation was

analysed, and the total number of residues.

Mol	Chain	Analysed	Rotameric	Outliers	Percentiles	
1	A	237/268 (88%)	219 (92%)	18 (8%)	13	28
1	B	255/268 (95%)	232 (91%)	23 (9%)	9	19
1	C	237/268 (88%)	215 (91%)	22 (9%)	9	18
1	D	255/268 (95%)	232 (91%)	23 (9%)	9	19
All	All	984/1072 (92%)	898 (91%)	86 (9%)	10	21

All (86) residues with a non-rotameric sidechain are listed below:

Mol	Chain	Res	Type
1	A	522	LEU
1	A	523	LYS
1	A	525	LYS
1	A	526	LEU
1	A	527	ARG
1	A	541	THR
1	A	544	GLU
1	A	556	ASN
1	A	558	ASP
1	A	571	ILE
1	A	579	LEU
1	A	599	ARG
1	A	623	MET
1	A	633	LEU
1	A	636	ARG
1	A	647	GLN
1	A	728	SER
1	A	781	LEU
1	B	521	GLU
1	B	526	LEU
1	B	541	THR
1	B	575	THR
1	B	576	ARG
1	B	580	GLU
1	B	590	LYS
1	B	600	LEU
1	B	610	ARG
1	B	623	MET
1	B	633	LEU
1	B	647	GLN
1	B	663	LEU

Continued on next page...

Continued from previous page...

Mol	Chain	Res	Type
1	B	664	SER
1	B	666	LYS
1	B	667	ARG
1	B	681	ASN
1	B	697	ILE
1	B	704	ARG
1	B	710	LYS
1	B	718	ILE
1	B	728	SER
1	B	787	GLU
1	C	523	LYS
1	C	525	LYS
1	C	526	LEU
1	C	527	ARG
1	C	528	ASP
1	C	541	THR
1	C	551	MET
1	C	556	ASN
1	C	558	ASP
1	C	561	ILE
1	C	569	MET
1	C	573	ILE
1	C	579	LEU
1	C	599	ARG
1	C	623	MET
1	C	633	LEU
1	C	636	ARG
1	C	647	GLN
1	C	723	ASP
1	C	728	SER
1	C	781	LEU
1	C	803	LEU
1	D	521	GLU
1	D	526	LEU
1	D	541	THR
1	D	575	THR
1	D	580	GLU
1	D	590	LYS
1	D	600	LEU
1	D	610	ARG
1	D	623	MET
1	D	633	LEU

Continued on next page...

Continued from previous page...

Mol	Chain	Res	Type
1	D	647	GLN
1	D	663	LEU
1	D	664	SER
1	D	666	LYS
1	D	667	ARG
1	D	681	ASN
1	D	690	ASP
1	D	697	ILE
1	D	704	ARG
1	D	710	LYS
1	D	718	ILE
1	D	728	SER
1	D	787	GLU

Some sidechains can be flipped to improve hydrogen bonding and reduce clashes. All (8) such sidechains are listed below:

Mol	Chain	Res	Type
1	A	681	ASN
1	A	755	ASN
1	B	681	ASN
1	B	755	ASN
1	C	755	ASN
1	D	557	GLN
1	D	681	ASN
1	D	755	ASN

5.3.3 RNA [i](#)

There are no RNA molecules in this entry.

5.4 Non-standard residues in protein, DNA, RNA chains [i](#)

There are no non-standard protein/DNA/RNA residues in this entry.

5.5 Carbohydrates [i](#)

There are no carbohydrates in this entry.

5.6 Ligand geometry [i](#)

4 ligands are modelled in this entry.

In the following table, the Counts columns list the number of bonds (or angles) for which Mogul statistics could be retrieved, the number of bonds (or angles) that are observed in the model and the number of bonds (or angles) that are defined in the Chemical Component Dictionary. The Link column lists molecule types, if any, to which the group is linked. The Z score for a bond length (or angle) is the number of standard deviations the observed value is removed from the expected value. A bond length (or angle) with $|Z| > 2$ is considered an outlier worth inspection. RMSZ is the root-mean-square of all Z scores of the bond lengths (or angles).

Mol	Type	Chain	Res	Link	Bond lengths			Bond angles		
					Counts	RMSZ	# Z > 2	Counts	RMSZ	# Z > 2
2	7YS	A	9001	-	31,35,35	0.55	0	35,52,52	1.11	2 (5%)
2	7YS	B	9001	-	31,35,35	0.47	0	35,52,52	1.08	2 (5%)
2	7YS	C	9001	-	31,35,35	0.60	1 (3%)	35,52,52	1.06	2 (5%)
2	7YS	D	9001	-	31,35,35	0.46	0	35,52,52	1.07	2 (5%)

In the following table, the Chirals column lists the number of chiral outliers, the number of chiral centers analysed, the number of these observed in the model and the number defined in the Chemical Component Dictionary. Similar counts are reported in the Torsion and Rings columns. '-' means no outliers of that kind were identified.

Mol	Type	Chain	Res	Link	Chirals	Torsions	Rings
2	7YS	A	9001	-	-	2/22/27/27	0/3/4/4
2	7YS	B	9001	-	-	2/22/27/27	0/3/4/4
2	7YS	C	9001	-	-	2/22/27/27	0/3/4/4
2	7YS	D	9001	-	-	2/22/27/27	0/3/4/4

All (1) bond length outliers are listed below:

Mol	Chain	Res	Type	Atoms	Z	Observed(Å)	Ideal(Å)
2	C	9001	7YS	C20-C21	-2.38	1.35	1.38

All (8) bond angle outliers are listed below:

Mol	Chain	Res	Type	Atoms	Z	Observed(°)	Ideal(°)
2	A	9001	7YS	C1-O18-C17	3.71	122.13	116.79
2	B	9001	7YS	C1-O18-C17	3.49	121.82	116.79
2	C	9001	7YS	C1-O18-C17	3.38	121.65	116.79
2	D	9001	7YS	C1-O18-C17	3.18	121.37	116.79
2	D	9001	7YS	O18-C17-C16	2.84	111.84	107.64

Continued on next page...

Continued from previous page...

Mol	Chain	Res	Type	Atoms	Z	Observed(°)	Ideal(°)
2	B	9001	7YS	O18-C17-C16	2.69	111.62	107.64
2	A	9001	7YS	O18-C17-C16	2.50	111.33	107.64
2	C	9001	7YS	O18-C17-C16	2.26	110.98	107.64

There are no chirality outliers.

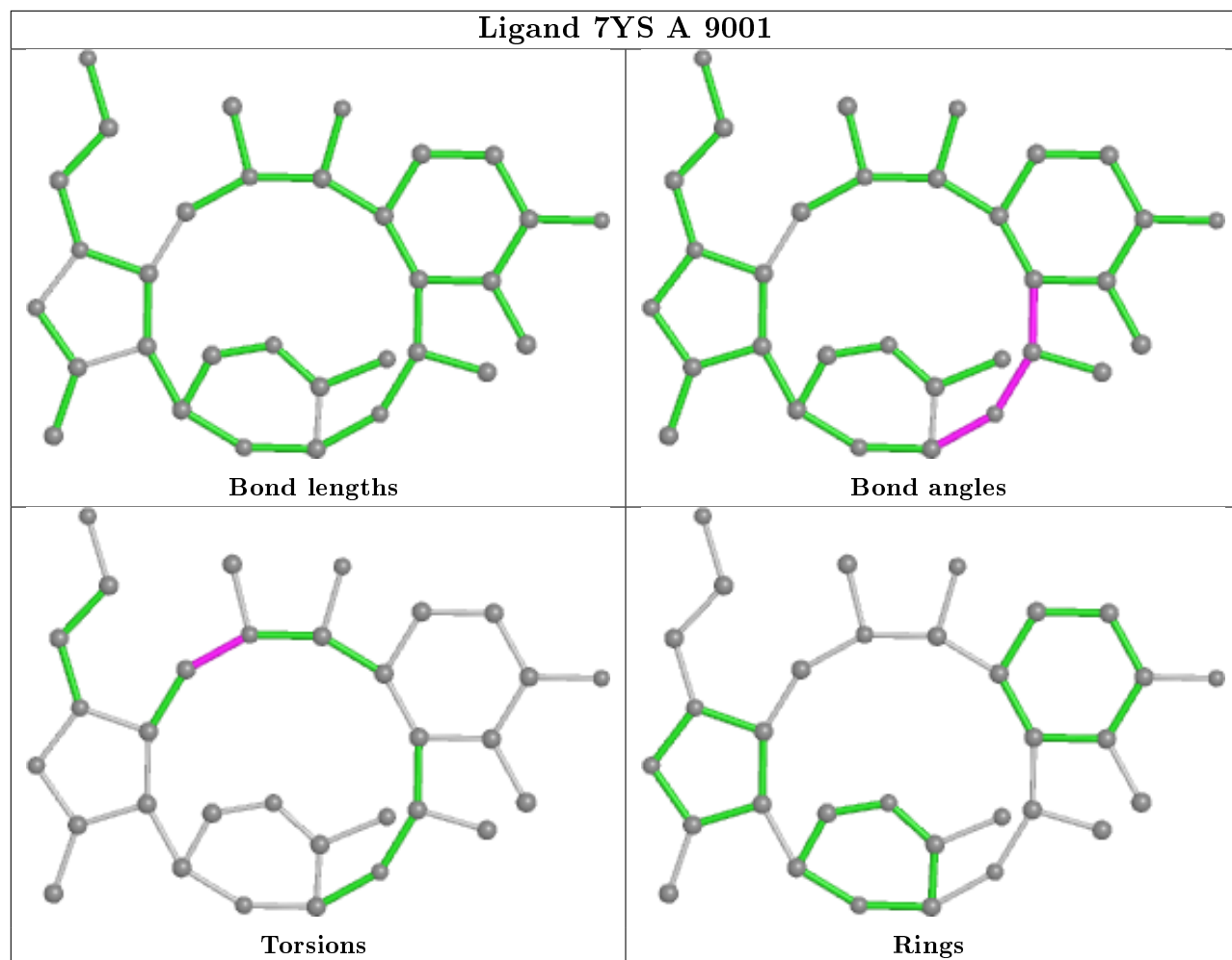
All (8) torsion outliers are listed below:

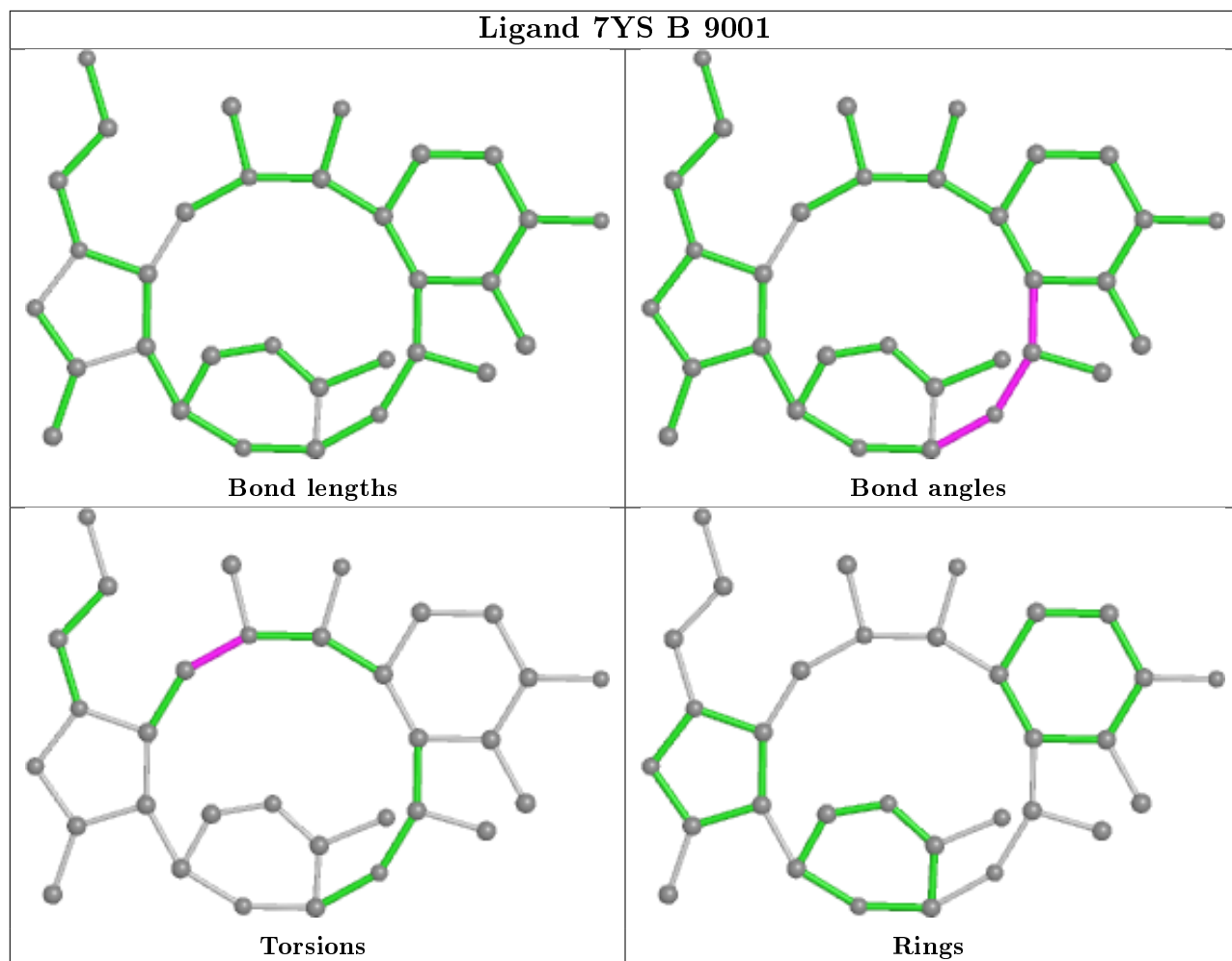
Mol	Chain	Res	Type	Atoms
2	A	9001	7YS	C11-C12-N13-C14
2	B	9001	7YS	C11-C12-N13-C14
2	C	9001	7YS	C11-C12-N13-C14
2	D	9001	7YS	C11-C12-N13-C14
2	A	9001	7YS	C11-C12-N13-C27
2	B	9001	7YS	C11-C12-N13-C27
2	C	9001	7YS	C11-C12-N13-C27
2	D	9001	7YS	C11-C12-N13-C27

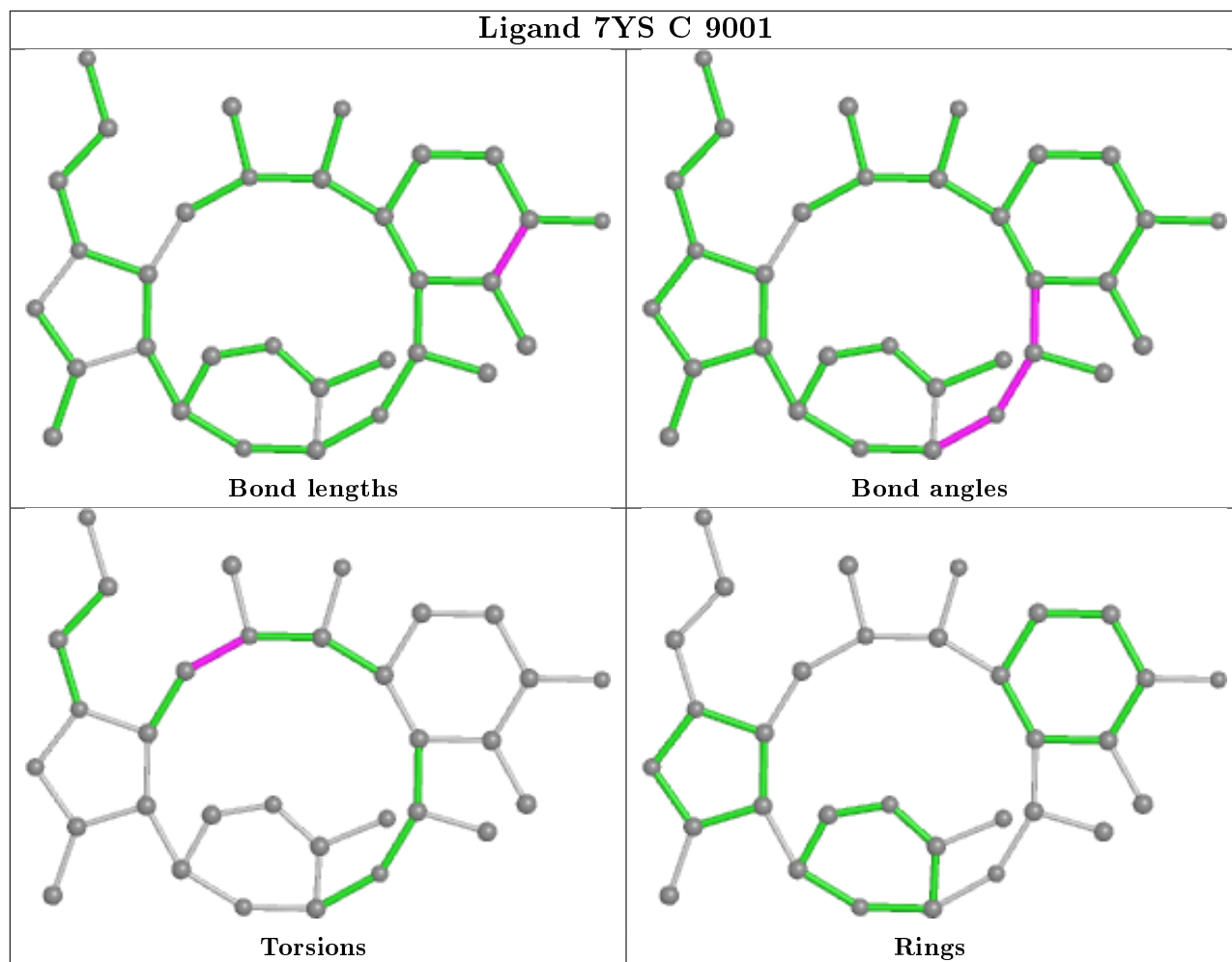
There are no ring outliers.

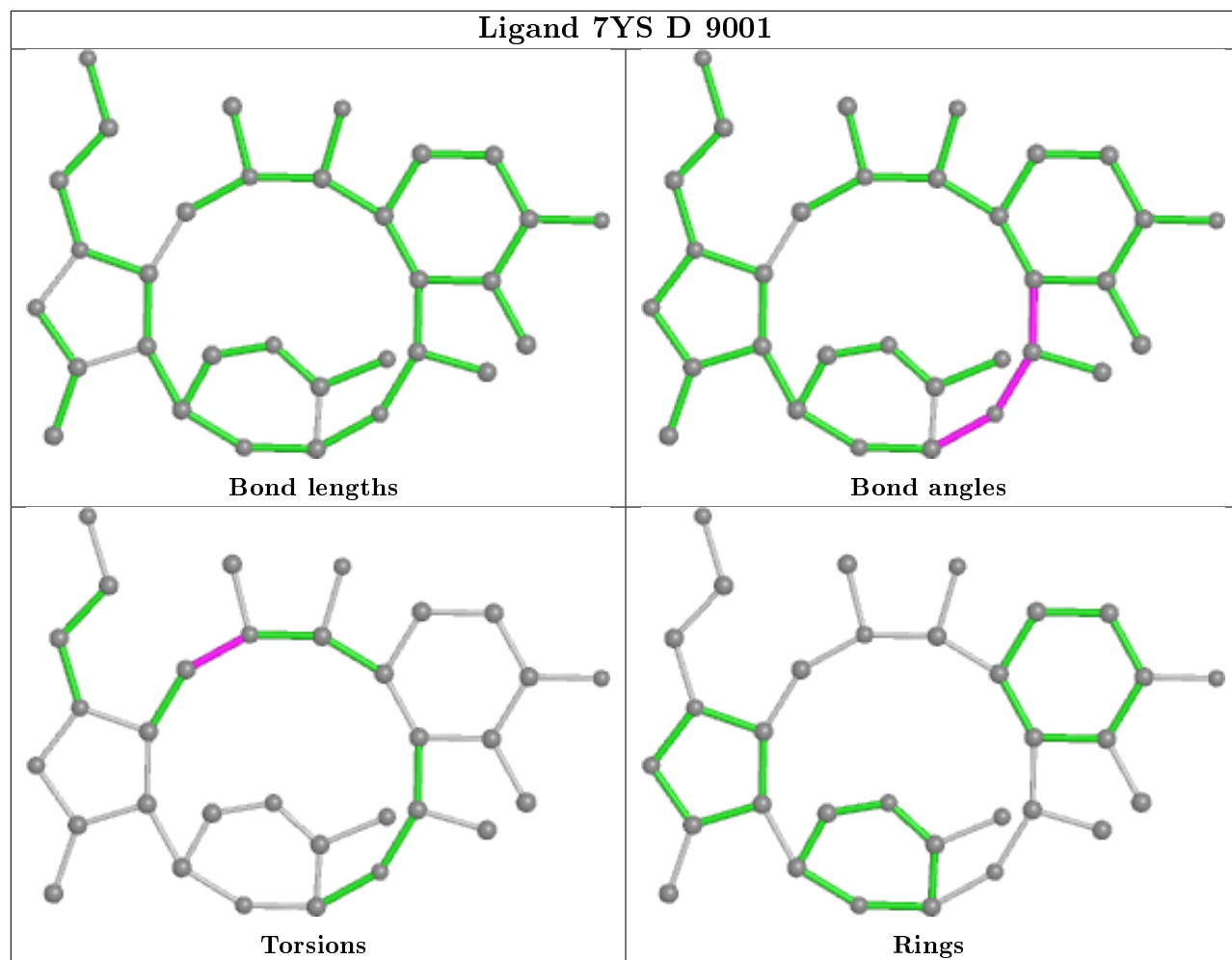
No monomer is involved in short contacts.

The following is a two-dimensional graphical depiction of Mogul quality analysis of bond lengths, bond angles, torsion angles, and ring geometry for all instances of the Ligand of Interest. In addition, ligands with molecular weight > 250 and outliers as shown on the validation Tables will also be included. For torsion angles, if less than 5% of the Mogul distribution of torsion angles is within 10 degrees of the torsion angle in question, then that torsion angle is considered an outlier. Any bond that is central to one or more torsion angles identified as an outlier by Mogul will be highlighted in the graph. For rings, the root-mean-square deviation (RMSD) between the ring in question and similar rings identified by Mogul is calculated over all ring torsion angles. If the average RMSD is greater than 60 degrees and the minimal RMSD between the ring in question and any Mogul-identified rings is also greater than 60 degrees, then that ring is considered an outlier. The outliers are highlighted in purple. The color gray indicates Mogul did not find sufficient equivalents in the CSD to analyse the geometry.









5.7 Other polymers [i](#)

There are no such residues in this entry.

5.8 Polymer linkage issues [i](#)

There are no chain breaks in this entry.

6 Fit of model and data

6.1 Protein, DNA and RNA chains

In the following table, the column labelled ‘#RSRZ> 2’ contains the number (and percentage) of RSRZ outliers, followed by percent RSRZ outliers for the chain as percentile scores relative to all X-ray entries and entries of similar resolution. The OWAB column contains the minimum, median, 95th percentile and maximum values of the occupancy-weighted average B-factor per residue. The column labelled ‘Q< 0.9’ lists the number of (and percentage) of residues with an average occupancy less than 0.9.

Mol	Chain	Analysed	<RSRZ>	#RSRZ>2	OWAB(Å ²)	Q<0.9
1	A	270/307 (87%)	0.34	11 (4%) 37 29	29, 52, 82, 105	0
1	B	291/307 (94%)	0.51	16 (5%) 25 18	30, 54, 87, 101	0
1	C	270/307 (87%)	0.36	10 (3%) 41 33	31, 53, 87, 100	0
1	D	291/307 (94%)	0.57	22 (7%) 13 8	32, 57, 91, 108	0
All	All	1122/1228 (91%)	0.45	59 (5%) 26 20	29, 54, 88, 108	0

All (59) RSRZ outliers are listed below:

Mol	Chain	Res	Type	RSRZ
1	D	682	GLU	5.9
1	C	559	ASP	4.9
1	C	547	PHE	4.8
1	D	643	TYR	4.5
1	B	810	LEU	4.5
1	A	572	ALA	4.4
1	C	573	ILE	4.4
1	D	644	LEU	4.3
1	A	573	ILE	4.0
1	A	571	ILE	3.9
1	D	811	PRO	3.9
1	D	708	ILE	3.8
1	A	640	GLN	3.8
1	A	547	PHE	3.7
1	A	574	CYS	3.7
1	D	699	ASN	3.5
1	D	646	THR	3.5
1	C	546	GLU	3.4
1	D	698	TYR	3.4
1	D	611	GLU	3.3
1	C	534	HIS	3.3

Continued on next page...

Continued from previous page...

Mol	Chain	Res	Type	RSRZ
1	B	811	PRO	3.3
1	B	611	GLU	3.2
1	B	556	ASN	2.9
1	A	647	GLN	2.9
1	D	641	PRO	2.9
1	C	694	SER	2.8
1	B	698	TYR	2.8
1	B	646	THR	2.7
1	D	810	LEU	2.7
1	B	647	GLN	2.6
1	C	640	GLN	2.6
1	B	570	LYS	2.5
1	D	512	GLY	2.5
1	B	643	TYR	2.5
1	B	571	ILE	2.5
1	D	515	SER	2.4
1	D	647	GLN	2.4
1	D	681	ASN	2.3
1	D	709	ALA	2.3
1	C	634	TYR	2.3
1	B	563	LYS	2.3
1	A	546	GLU	2.3
1	D	612	SER	2.2
1	C	571	ILE	2.2
1	A	524	GLU	2.2
1	B	541	THR	2.2
1	D	697	ILE	2.2
1	D	532	ASP	2.2
1	A	521	GLU	2.2
1	B	560	SER	2.2
1	B	514	ASN	2.1
1	A	694	SER	2.1
1	D	560	SER	2.1
1	C	813	ALA	2.1
1	D	622	PHE	2.1
1	B	512	GLY	2.0
1	B	760	ASP	2.0
1	D	514	ASN	2.0

6.2 Non-standard residues in protein, DNA, RNA chains

There are no non-standard protein/DNA/RNA residues in this entry.

6.3 Carbohydrates

There are no carbohydrates in this entry.

6.4 Ligands

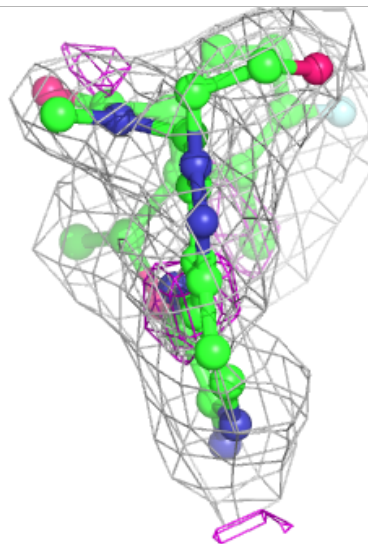
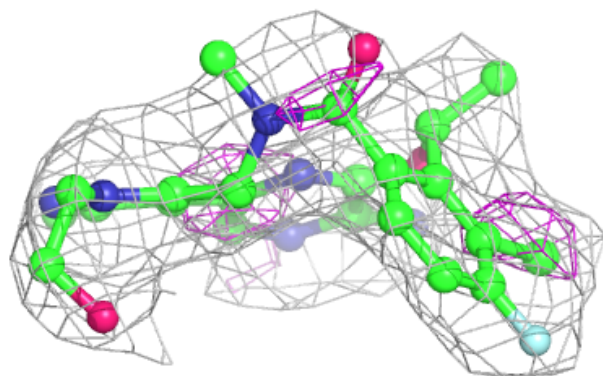
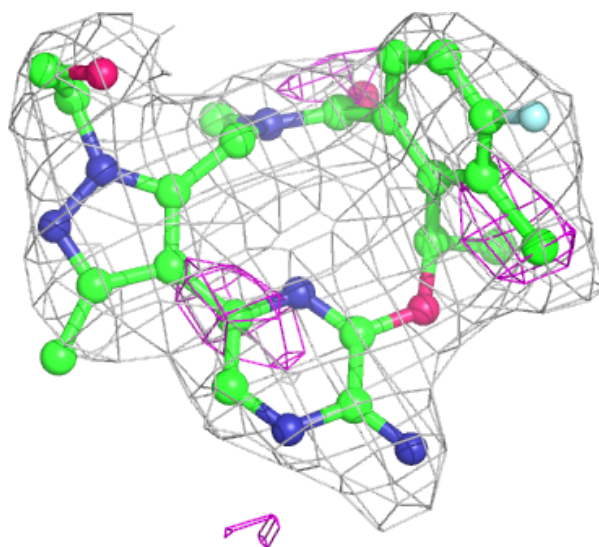
In the following table, the Atoms column lists the number of modelled atoms in the group and the number defined in the chemical component dictionary. The B-factors column lists the minimum, median, 95th percentile and maximum values of B factors of atoms in the group. The column labelled 'Q< 0.9' lists the number of atoms with occupancy less than 0.9.

Mol	Type	Chain	Res	Atoms	RSCC	RSR	B-factors(\AA^2)	Q<0.9
2	7YS	D	9001	32/32	0.93	0.28	41,52,59,61	0
2	7YS	B	9001	32/32	0.94	0.24	48,58,63,67	0
2	7YS	C	9001	32/32	0.95	0.20	37,45,50,52	0
2	7YS	A	9001	32/32	0.96	0.20	39,43,49,51	0

The following is a graphical depiction of the model fit to experimental electron density of all instances of the Ligand of Interest. In addition, ligands with molecular weight > 250 and outliers as shown on the geometry validation Tables will also be included. Each fit is shown from different orientation to approximate a three-dimensional view.

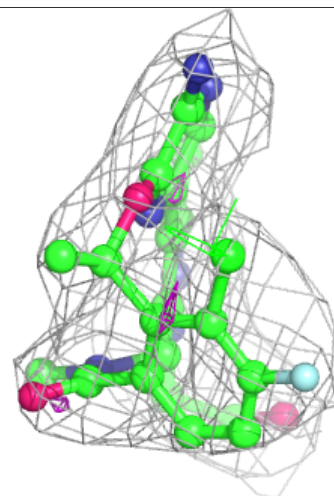
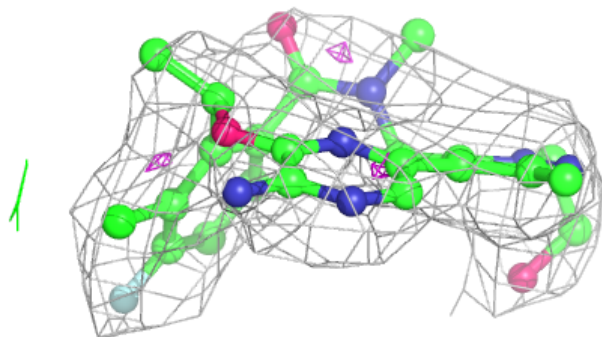
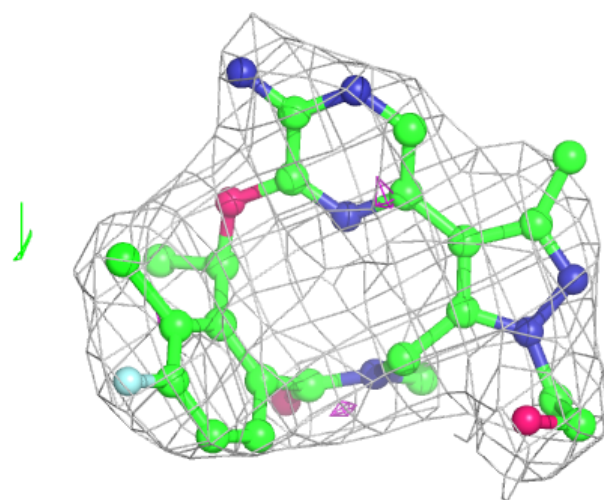
Electron density around 7YS D 9001:

$2mF_o-DF_c$ (at 0.7 rmsd) in gray
 mF_o-DF_c (at 3 rmsd) in purple (negative)
and green (positive)



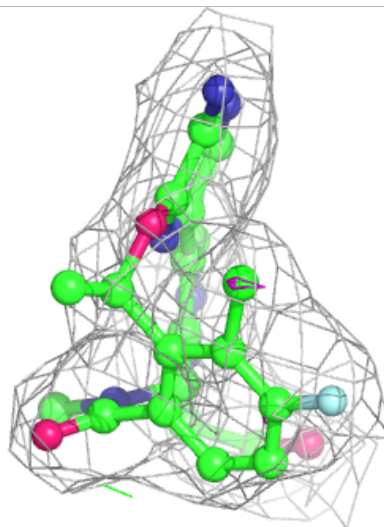
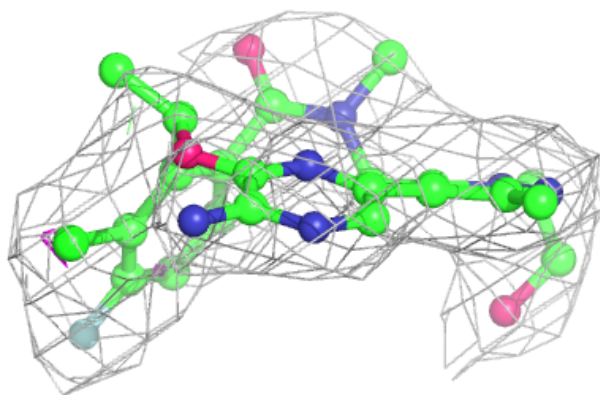
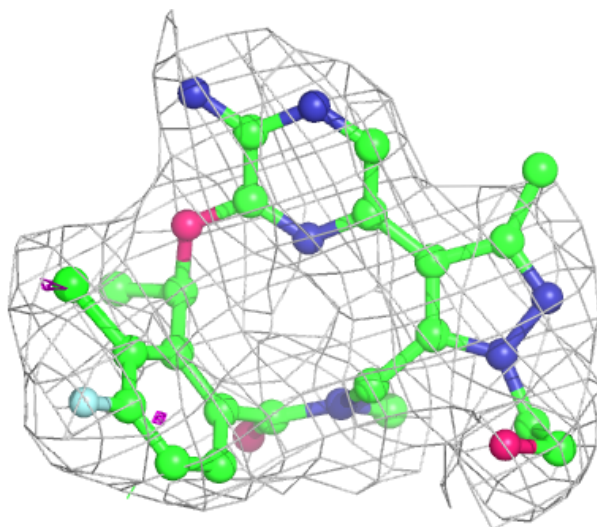
Electron density around 7YS B 9001:

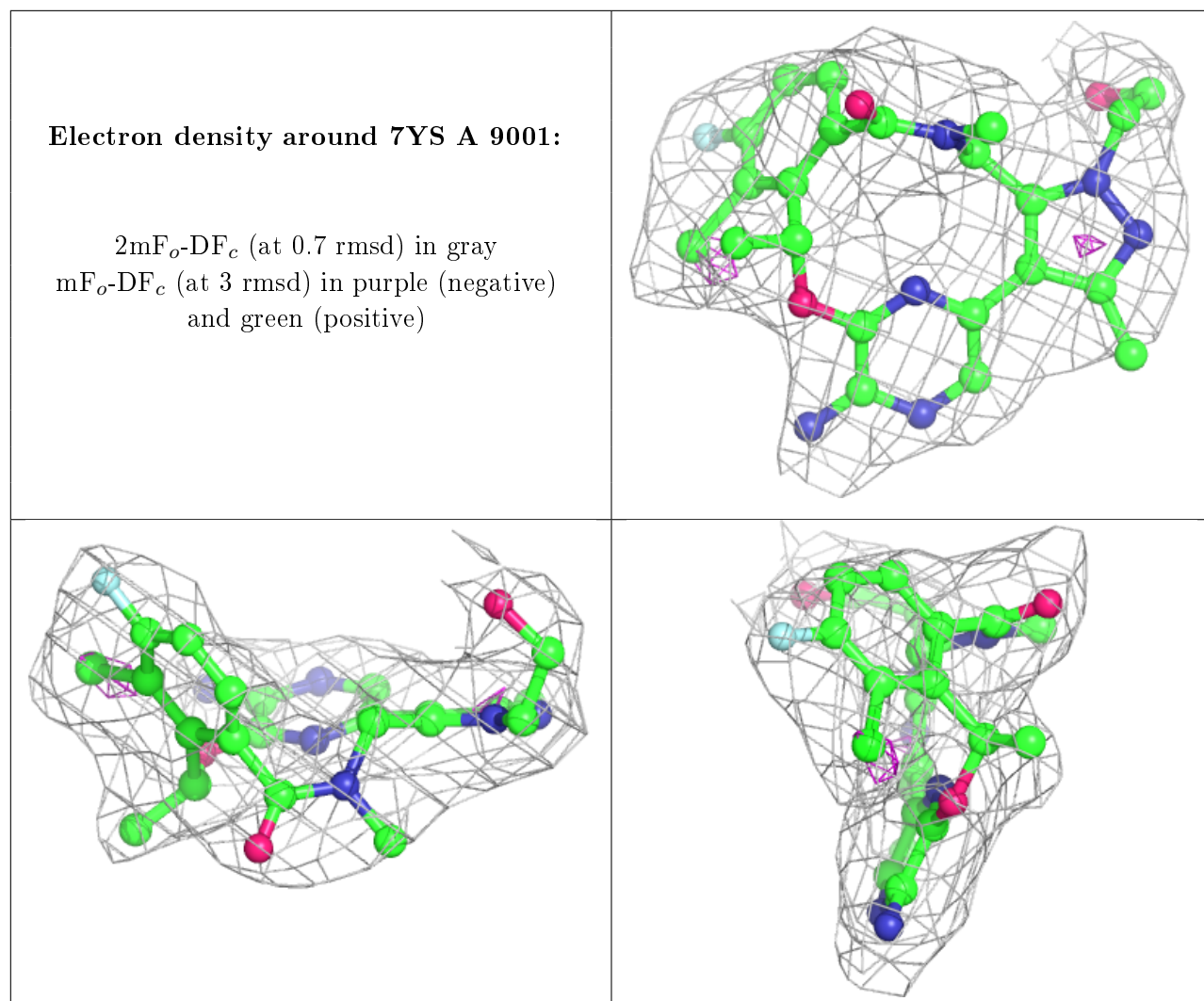
$2mF_o-DF_c$ (at 0.7 rmsd) in gray
 mF_o-DF_c (at 3 rmsd) in purple (negative)
and green (positive)



Electron density around 7YS C 9001:

$2mF_o-DF_c$ (at 0.7 rmsd) in gray
 mF_o-DF_c (at 3 rmsd) in purple (negative)
and green (positive)





6.5 Other polymers [i](#)

There are no such residues in this entry.