



# Full wwPDB X-ray Structure Validation Report ⓘ

Oct 30, 2023 – 05:37 PM EDT

PDB ID : 8U6F  
Title : Crystal Structure of HIV-1 Reverse Transcriptase in Complex with N-(2-(5-chloro-2-(3-chloro-5-cyanophenoxy)phenoxy)ethyl)-N-methylacrylamide (JLJ742), a non-nucleoside inhibitor  
Authors : Prucha, G.; Carter, Z.; Jorgensen, W.L.; Anderson, K.S.  
Deposited on : 2023-09-13  
Resolution : 2.69 Å(reported)

This is a Full wwPDB X-ray Structure Validation Report for a publicly released PDB entry.

We welcome your comments at [validation@mail.wwpdb.org](mailto:validation@mail.wwpdb.org)

A user guide is available at

<https://www.wwpdb.org/validation/2017/XrayValidationReportHelp>

with specific help available everywhere you see the ⓘ symbol.

The types of validation reports are described at

<http://www.wwpdb.org/validation/2017/FAQs#types>.

---

The following versions of software and data (see [references ⓘ](#)) were used in the production of this report:

MolProbity : 4.02b-467  
Mogul : 1.8.5 (274361), CSD as541be (2020)  
Xtriage (Phenix) : 1.13  
EDS : 2.36  
buster-report : 1.1.7 (2018)  
Percentile statistics : 20191225.v01 (using entries in the PDB archive December 25th 2019)  
Refmac : 5.8.0158  
CCP4 : 7.0.044 (Gargrove)  
Ideal geometry (proteins) : Engh & Huber (2001)  
Ideal geometry (DNA, RNA) : Parkinson et al. (1996)  
Validation Pipeline (wwPDB-VP) : 2.36

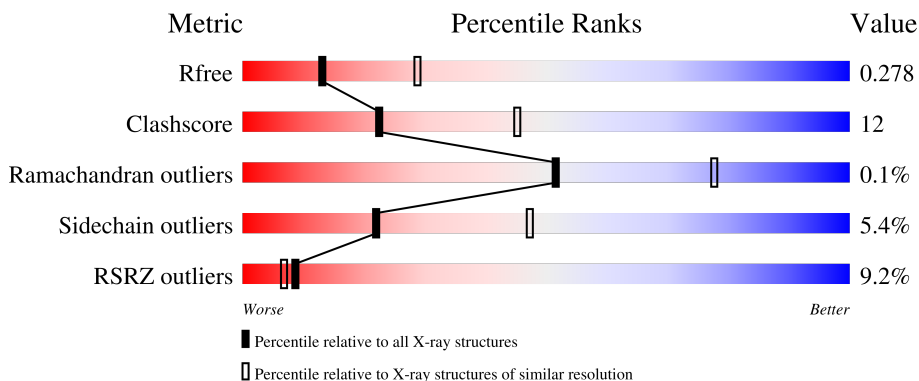
# 1 Overall quality at a glance

The following experimental techniques were used to determine the structure:

*X-RAY DIFFRACTION*



The reported resolution of this entry is 2.69 Å.

Percentile scores (ranging between 0-100) for global validation metrics of the entry are shown in the following graphic. The table shows the number of entries on which the scores are based.



Metric	Whole archive (#Entries)	Similar resolution (#Entries, resolution range(Å))
$R_{free}$	130704	2808 (2.70-2.70)
Clashscore	141614	3122 (2.70-2.70)
Ramachandran outliers	138981	3069 (2.70-2.70)
Sidechain outliers	138945	3069 (2.70-2.70)
RSRZ outliers	127900	2737 (2.70-2.70)

The table below summarises the geometric issues observed across the polymeric chains and their fit to the electron density. The red, orange, yellow and green segments of the lower bar indicate the fraction of residues that contain outliers for  $\geq 3$ , 2, 1 and 0 types of geometric quality criteria respectively. A grey segment represents the fraction of residues that are not modelled. The numeric value for each fraction is indicated below the corresponding segment, with a dot representing fractions  $\leq 5\%$ . The upper red bar (where present) indicates the fraction of residues that have poor fit to the electron density. The numeric value is given above the bar.

Mol	Chain	Length	Quality of chain
1	A	554	 10% 74% 22% ••
2	B	428	 7% 71% 23% • 5%

## 2 Entry composition [i](#)

There are 4 unique types of molecules in this entry. The entry contains 7356 atoms, of which 0 are hydrogens and 0 are deuteriums.

In the tables below, the ZeroOcc column contains the number of atoms modelled with zero occupancy, the AltConf column contains the number of residues with at least one atom in alternate conformation and the Trace column contains the number of residues modelled with at most 2 atoms.

- Molecule 1 is a protein called Reverse transcriptase/ribonuclease H.

Mol	Chain	Residues	Atoms					ZeroOcc	AltConf	Trace
			Total	C	N	O	S			
1	A	546	4098	2632	689	769	8	0	0	0

There are 5 discrepancies between the modelled and reference sequences:

Chain	Residue	Modelled	Actual	Comment	Reference
A	-1	MET	-	expression tag	UNP P03366
A	0	VAL	-	expression tag	UNP P03366
A	172	ALA	LYS	engineered mutation	UNP P03366
A	173	ALA	LYS	engineered mutation	UNP P03366
A	280	SER	CYS	engineered mutation	UNP P03366

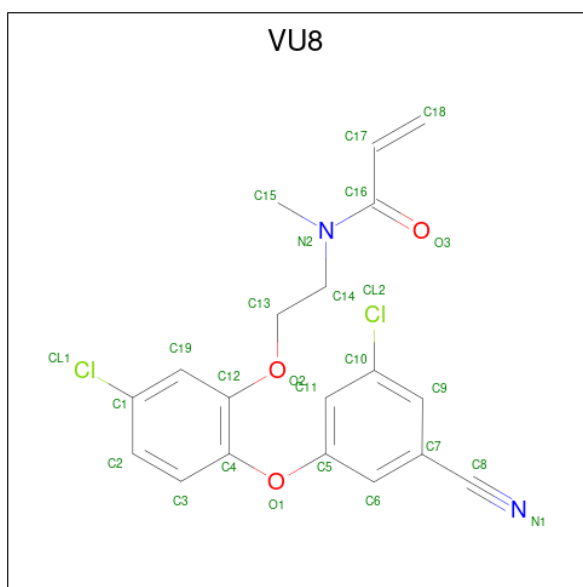
- Molecule 2 is a protein called p51 RT.

Mol	Chain	Residues	Atoms					ZeroOcc	AltConf	Trace
			Total	C	N	O	S			
2	B	406	3215	2093	525	591	6	0	1	0

There is a discrepancy between the modelled and reference sequences:

Chain	Residue	Modelled	Actual	Comment	Reference
B	280	SER	CYS	engineered mutation	UNP P03366

- Molecule 3 is N-{2-[5-chloro-2-(3-chloro-5-cyanophenoxy)phenoxy]ethyl}-N-methylprop-2-enamide (three-letter code: VU8) (formula: C<sub>19</sub>H<sub>16</sub>Cl<sub>2</sub>N<sub>2</sub>O<sub>3</sub>) (labeled as "Ligand of Interest" by depositor).



Mol	Chain	Residues	Atoms					ZeroOcc	AltConf
			Total	C	Cl	N	O		
3	A	1	26	19	2	2	3	0	0

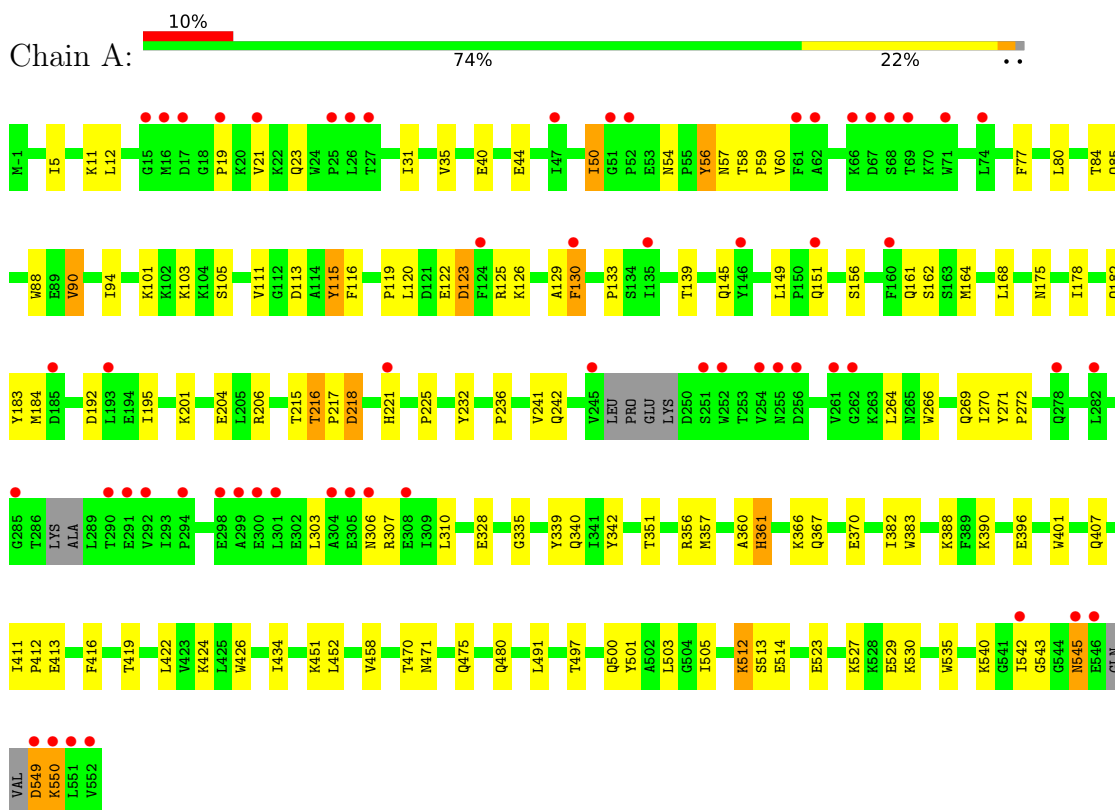
- Molecule 4 is water.

Mol	Chain	Residues	Atoms		ZeroOcc	AltConf
4	A	14	Total	O	0	0
			14	14		
4	B	3	Total	O	0	0
			3	3		

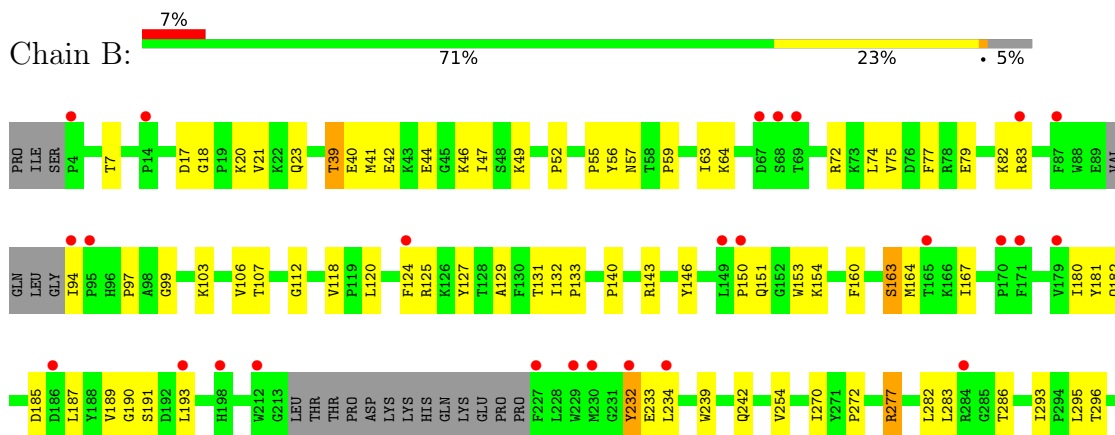
### 3 Residue-property plots [i](#)

These plots are drawn for all protein, RNA, DNA and oligosaccharide chains in the entry. The first graphic for a chain summarises the proportions of the various outlier classes displayed in the second graphic. The second graphic shows the sequence view annotated by issues in geometry and electron density. Residues are color-coded according to the number of geometric quality criteria for which they contain at least one outlier: green = 0, yellow = 1, orange = 2 and red = 3 or more. A red dot above a residue indicates a poor fit to the electron density ( $RSRZ > 2$ ). Stretches of 2 or more consecutive residues without any outlier are shown as a green connector. Residues present in the sample, but not in the model, are shown in grey.

- Molecule 1: Reverse transcriptase/ribonuclease H



- Molecule 2: p51 RT





## 4 Data and refinement statistics

Property	Value	Source
Space group	C 1 2 1	Depositor
Cell constants a, b, c, $\alpha$ , $\beta$ , $\gamma$	162.97Å 74.36Å 109.50Å 90.00° 99.89° 90.00°	Depositor
Resolution (Å)	35.96 – 2.69 35.96 – 2.69	Depositor EDS
% Data completeness (in resolution range)	99.6 (35.96-2.69) 99.6 (35.96-2.69)	Depositor EDS
$R_{merge}$	0.09	Depositor
$R_{sym}$	(Not available)	Depositor
$\langle I/\sigma(I) \rangle$ <sup>1</sup>	1.28 (at 2.68Å)	Xtrriage
Refinement program	PHENIX (1.20.1_4487)	Depositor
R, $R_{free}$	0.235 , 0.284 0.242 , 0.278	Depositor DCC
$R_{free}$ test set	1808 reflections (5.00%)	wwPDB-VP
Wilson B-factor (Å <sup>2</sup> )	76.7	Xtrriage
Anisotropy	0.130	Xtrriage
Bulk solvent $k_{sol}$ (e/Å <sup>3</sup> ), $B_{sol}$ (Å <sup>2</sup> )	0.30 , 64.7	EDS
L-test for twinning <sup>2</sup>	$\langle  L  \rangle = 0.51$ , $\langle L^2 \rangle = 0.34$	Xtrriage
Estimated twinning fraction	No twinning to report.	Xtrriage
$F_o, F_c$ correlation	0.93	EDS
Total number of atoms	7356	wwPDB-VP
Average B, all atoms (Å <sup>2</sup> )	89.0	wwPDB-VP

Xtrriage's analysis on translational NCS is as follows: *The largest off-origin peak in the Patterson function is 4.13% of the height of the origin peak. No significant pseudotranslation is detected.*

<sup>1</sup>Intensities estimated from amplitudes.

<sup>2</sup>Theoretical values of  $\langle |L| \rangle$ ,  $\langle L^2 \rangle$  for acentric reflections are 0.5, 0.333 respectively for untwinned datasets, and 0.375, 0.2 for perfectly twinned datasets.

## 5 Model quality

### 5.1 Standard geometry

Bond lengths and bond angles in the following residue types are not validated in this section: VU8

The Z score for a bond length (or angle) is the number of standard deviations the observed value is removed from the expected value. A bond length (or angle) with  $|Z| > 5$  is considered an outlier worth inspection. RMSZ is the root-mean-square of all Z scores of the bond lengths (or angles).

Mol	Chain	Bond lengths		Bond angles	
		RMSZ	# Z  >5	RMSZ	# Z  >5
1	A	0.51	0/4205	0.65	0/5756
2	B	0.50	0/3307	0.63	0/4516
All	All	0.51	0/7512	0.64	0/10272

There are no bond length outliers.

There are no bond angle outliers.

There are no chirality outliers.

There are no planarity outliers.

### 5.2 Too-close contacts

In the following table, the Non-H and H(model) columns list the number of non-hydrogen atoms and hydrogen atoms in the chain respectively. The H(added) column lists the number of hydrogen atoms added and optimized by MolProbity. The Clashes column lists the number of clashes within the asymmetric unit, whereas Symm-Clashes lists symmetry-related clashes.

Mol	Chain	Non-H	H(model)	H(added)	Clashes	Symm-Clashes
1	A	4098	0	3768	96	0
2	B	3215	0	3081	83	0
3	A	26	0	0	2	0
4	A	14	0	0	1	0
4	B	3	0	0	0	0
All	All	7356	0	6849	164	0

The all-atom clashscore is defined as the number of clashes found per 1000 atoms (including hydrogen atoms). The all-atom clashscore for this structure is 12.

All (164) close contacts within the same asymmetric unit are listed below, sorted by their clash magnitude.



Atom-1	Atom-2	Interatomic distance (Å)	Clash overlap (Å)
2:B:282:LEU:HD21	2:B:296:THR:HG23	1.35	1.06
1:A:182:GLN:HE21	2:B:140:PRO:HG3	1.23	0.97
1:A:182:GLN:NE2	2:B:140:PRO:HG3	1.89	0.86
2:B:308:GLU:HA	2:B:311:LYS:HE2	1.58	0.86
2:B:369:THR:HG22	2:B:398:TRP:CZ3	2.15	0.81
1:A:182:GLN:HE21	2:B:140:PRO:CG	1.94	0.79
2:B:277:ARG:H	2:B:277:ARG:HD2	1.48	0.79
2:B:388:LYS:HD2	2:B:413:GLU:HB2	1.69	0.75
1:A:542:ILE:HG23	2:B:283:LEU:HD13	1.69	0.75
2:B:282:LEU:HD21	2:B:296:THR:CG2	2.17	0.73
1:A:452:LEU:HD23	1:A:470:THR:HA	1.71	0.73
1:A:303:LEU:HA	1:A:306:ASN:HB2	1.73	0.71
1:A:122:GLU:HA	1:A:125:ARG:HG3	1.73	0.70
2:B:254:VAL:HG22	2:B:293:ILE:HD11	1.72	0.69
2:B:365:VAL:O	2:B:369:THR:HG23	1.95	0.67
2:B:23:GLN:HE21	2:B:133:PRO:HG3	1.60	0.67
2:B:39:THR:HG22	2:B:40:GLU:OE1	1.95	0.67
2:B:282:LEU:CD2	2:B:296:THR:HG23	2.19	0.66
1:A:458:VAL:HG22	2:B:286:THR:HG21	1.78	0.66
2:B:21:VAL:O	2:B:57:ASN:ND2	2.29	0.65
1:A:206:ARG:CZ	1:A:218:ASP:HB2	2.26	0.65
1:A:342:TYR:OH	1:A:390:LYS:NZ	2.25	0.65
1:A:113:ASP:OD2	1:A:215:THR:HB	1.97	0.64
1:A:88:TRP:HE1	1:A:90:VAL:HG23	1.62	0.63
2:B:180:ILE:HG12	2:B:189:VAL:HG12	1.81	0.62
1:A:12:LEU:HD23	1:A:84:THR:HA	1.80	0.62
1:A:90:VAL:HG11	2:B:140:PRO:HB3	1.80	0.61
2:B:79:GLU:HG3	2:B:83:ARG:HE	1.65	0.61
1:A:11:LYS:O	1:A:85:GLN:HB3	2.00	0.61
2:B:317:VAL:HG12	2:B:347:LYS:HB3	1.83	0.61
2:B:18:GLY:HA3	2:B:127:TYR:CD1	2.36	0.60
1:A:217:PRO:HB2	1:A:221:HIS:HB3	1.84	0.59
2:B:354[B]:TYR:HE2	2:B:375:ILE:HG13	1.68	0.59
1:A:366:LYS:O	1:A:370:GLU:HG3	2.03	0.58
1:A:503:LEU:HD22	1:A:535:TRP:HB2	1.84	0.58
2:B:47:ILE:HG22	2:B:146:TYR:HA	1.85	0.58
2:B:74:LEU:HD12	2:B:75:VAL:H	1.69	0.58
1:A:77:PHE:O	1:A:80:LEU:N	2.37	0.57
1:A:328:GLU:HG3	1:A:390:LYS:HB2	1.85	0.57
2:B:20:LYS:HE2	2:B:55:PRO:HB2	1.86	0.57
1:A:225:PRO:HB2	1:A:236:PRO:HD3	1.88	0.56
1:A:60:VAL:HG11	1:A:130:PHE:HD2	1.69	0.56

*Continued on next page...*

*Continued from previous page...*

Atom-1	Atom-2	Interatomic distance (Å)	Clash overlap (Å)
1:A:50:ILE:HG21	1:A:145:GLN:HG3	1.87	0.56
2:B:21:VAL:HB	2:B:59:PRO:HD3	1.88	0.55
2:B:393:ILE:HD13	2:B:398:TRP:HB2	1.88	0.55
1:A:543:GLY:HA2	2:B:283:LEU:O	2.06	0.55
2:B:163:SER:O	2:B:167:ILE:HG12	2.07	0.55
2:B:125:ARG:HB3	2:B:146:TYR:O	2.07	0.55
1:A:366:LYS:HE2	1:A:401:TRP:HH2	1.72	0.54
1:A:94:ILE:HG12	1:A:183:TYR:OH	2.07	0.54
1:A:58:THR:N	1:A:129:ALA:O	2.37	0.54
1:A:361:HIS:ND1	1:A:513:SER:OG	2.23	0.54
1:A:206:ARG:HD2	1:A:216:THR:OG1	2.07	0.54
1:A:21:VAL:O	1:A:57:ASN:ND2	2.31	0.54
2:B:182:GLN:HB2	2:B:187:LEU:HD12	1.89	0.54
1:A:103:LYS:H	3:A:601:VU8:C15	2.21	0.54
1:A:388:LYS:HE2	1:A:413:GLU:OE2	2.09	0.53
1:A:77:PHE:HB3	1:A:80:LEU:HB3	1.91	0.53
1:A:126:LYS:HA	1:A:145:GLN:OE1	2.09	0.52
1:A:491:LEU:HB3	1:A:529:GLU:HG3	1.92	0.52
1:A:120:LEU:HD12	1:A:149:LEU:HD23	1.90	0.52
1:A:175:ASN:O	1:A:178:ILE:HG12	2.10	0.52
2:B:40:GLU:OE1	2:B:40:GLU:N	2.43	0.52
1:A:360:ALA:O	1:A:514:GLU:HG2	2.10	0.51
2:B:232:TYR:HD1	2:B:233:GLU:N	2.08	0.51
2:B:422:LEU:C	2:B:422:LEU:HD12	2.31	0.51
2:B:120:LEU:H	2:B:125:ARG:HH21	1.58	0.51
2:B:232:TYR:HD1	2:B:233:GLU:H	1.58	0.50
2:B:44:GLU:OE1	2:B:46:LYS:HE3	2.11	0.50
1:A:21:VAL:HB	1:A:59:PRO:HD3	1.93	0.50
1:A:182:GLN:NE2	2:B:140:PRO:CG	2.65	0.50
1:A:201:LYS:HA	1:A:204:GLU:HG3	1.93	0.50
2:B:120:LEU:HD22	2:B:125:ARG:HG2	1.94	0.50
2:B:239:TRP:HB2	2:B:242:GLN:NE2	2.26	0.50
2:B:120:LEU:HD21	2:B:124:PHE:HB3	1.94	0.49
2:B:151:GLN:HB3	2:B:185:ASP:OD2	2.12	0.49
2:B:331:LYS:HB2	2:B:337:TRP:CZ3	2.47	0.49
1:A:340:GLN:HG3	1:A:351:THR:HG22	1.94	0.49
2:B:369:THR:HG22	2:B:398:TRP:HZ3	1.73	0.49
2:B:150:PRO:HG2	2:B:153:TRP:HB2	1.93	0.49
1:A:266:TRP:O	1:A:269:GLN:HG2	2.13	0.49
1:A:411:ILE:HG22	1:A:412:PRO:O	2.13	0.49
2:B:160:PHE:CD2	2:B:164:MET:HB2	2.48	0.49

*Continued on next page...*

*Continued from previous page...*

Atom-1	Atom-2	Interatomic distance (Å)	Clash overlap (Å)
1:A:5:ILE:O	1:A:119:PRO:HG2	2.13	0.48
1:A:120:LEU:HD23	1:A:125:ARG:HG2	1.95	0.48
1:A:480:GLN:NE2	4:A:701:HOH:O	2.46	0.48
2:B:107:THR:HA	2:B:232:TYR:O	2.13	0.48
1:A:40:GLU:O	1:A:44:GLU:HG3	2.14	0.48
2:B:106:VAL:HG22	2:B:190:GLY:HA3	1.96	0.47
1:A:543:GLY:H	2:B:283:LEU:HB3	1.79	0.47
2:B:319:TYR:OH	2:B:385:LYS:HE2	2.15	0.47
1:A:23:GLN:HG3	1:A:133:PRO:HG3	1.96	0.47
2:B:75:VAL:HB	2:B:77:PHE:CE2	2.50	0.47
1:A:162:SER:CB	2:B:52:PRO:HD3	2.44	0.47
1:A:424:LYS:HD3	1:A:426:TRP:CH2	2.50	0.47
1:A:116:PHE:CZ	1:A:151:GLN:HG3	2.50	0.47
1:A:549:ASP:HB3	1:A:550:LYS:HE3	1.97	0.47
1:A:103:LYS:HA	1:A:192:ASP:OD1	2.16	0.46
2:B:56:TYR:O	2:B:129:ALA:HB3	2.15	0.46
1:A:101:LYS:HE3	1:A:101:LYS:HB2	1.57	0.46
1:A:206:ARG:NH2	1:A:218:ASP:HB2	2.31	0.46
2:B:132:ILE:N	2:B:132:ILE:HD13	2.29	0.46
1:A:225:PRO:CB	1:A:236:PRO:HD3	2.46	0.46
2:B:112:GLY:HA3	2:B:185:ASP:HB3	1.97	0.46
1:A:126:LYS:HA	1:A:145:GLN:CD	2.36	0.46
1:A:451:LYS:O	1:A:471:ASN:N	2.49	0.46
1:A:183:TYR:CD2	1:A:184:MET:HG3	2.51	0.45
1:A:356:ARG:HG2	1:A:357:MET:O	2.16	0.45
1:A:269:GLN:HA	1:A:351:THR:O	2.16	0.45
1:A:512:LYS:HA	1:A:512:LYS:HD3	1.52	0.45
1:A:475:GLN:HG2	1:A:501:TYR:CD2	2.52	0.45
1:A:182:GLN:HG3	1:A:182:GLN:O	2.17	0.45
2:B:317:VAL:HG12	2:B:347:LYS:HD3	1.98	0.45
1:A:164:MET:O	1:A:168:LEU:HG	2.16	0.45
1:A:105:SER:OG	1:A:195:ILE:HD13	2.17	0.45
1:A:503:LEU:HA	1:A:503:LEU:HD12	1.73	0.45
2:B:57:ASN:HA	2:B:129:ALA:O	2.16	0.45
1:A:542:ILE:O	1:A:545:ASN:HB2	2.17	0.44
2:B:191:SER:HB2	2:B:193:LEU:HG	1.99	0.44
2:B:282:LEU:CD1	2:B:295:LEU:HD23	2.47	0.44
1:A:182:GLN:HE21	2:B:140:PRO:CD	2.30	0.44
2:B:106:VAL:HA	2:B:190:GLY:HA2	1.99	0.44
2:B:421:PRO:HB2	2:B:423:VAL:HG22	1.99	0.44
1:A:422:LEU:HA	1:A:422:LEU:HD13	1.74	0.44

*Continued on next page...*

*Continued from previous page...*

Atom-1	Atom-2	Interatomic distance (Å)	Clash overlap (Å)
1:A:434:ILE:HD13	1:A:530:LYS:HB3	2.00	0.44
2:B:99:GLY:O	2:B:103:LYS:HG2	2.18	0.44
1:A:328:GLU:O	1:A:339:TYR:HA	2.17	0.44
1:A:120:LEU:H	1:A:125:ARG:HH21	1.66	0.44
2:B:354[B]:TYR:CE2	2:B:375:ILE:HG13	2.51	0.44
2:B:18:GLY:HA3	2:B:127:TYR:HD1	1.79	0.43
2:B:42:GLU:OE2	2:B:49:LYS:HG3	2.17	0.43
1:A:356:ARG:HD3	1:A:367:GLN:NE2	2.32	0.43
2:B:393:ILE:HG21	2:B:398:TRP:HB2	2.01	0.43
1:A:54:ASN:OD1	1:A:56:TYR:HD1	2.01	0.43
1:A:416:PHE:HE1	1:A:422:LEU:HD11	1.84	0.43
1:A:270:ILE:O	1:A:272:PRO:HD3	2.18	0.42
1:A:335:GLY:HA2	1:A:367:GLN:OE1	2.18	0.42
1:A:88:TRP:NE1	2:B:143:ARG:HD3	2.34	0.42
2:B:97:PRO:HG3	2:B:181:TYR:HB2	2.01	0.42
2:B:17:ASP:O	2:B:83:ARG:HD3	2.18	0.42
1:A:271:TYR:CE2	1:A:310:LEU:HD22	2.55	0.42
2:B:42:GLU:HA	2:B:47:ILE:O	2.20	0.42
2:B:17:ASP:OD1	2:B:56:TYR:OH	2.29	0.42
2:B:41:MET:HB3	2:B:47:ILE:HG12	2.01	0.41
1:A:303:LEU:HD11	1:A:307:ARG:CB	2.50	0.41
1:A:161:GLN:OE1	1:A:184:MET:HA	2.20	0.41
1:A:31:ILE:O	1:A:35:VAL:HG23	2.19	0.41
2:B:72:ARG:NH2	2:B:151:GLN:OE1	2.54	0.41
1:A:115:TYR:CE1	1:A:156:SER:HB3	2.56	0.41
1:A:232:TYR:C	1:A:242:GLN:HG3	2.41	0.41
2:B:74:LEU:HD12	2:B:75:VAL:N	2.35	0.41
1:A:236:PRO:HA	3:A:601:VU8:C17	2.51	0.41
1:A:382:ILE:HG22	1:A:383:TRP:CE2	2.55	0.41
2:B:423:VAL:HG12	2:B:426:TRP:CE3	2.56	0.41
1:A:123:ASP:OD2	1:A:123:ASP:N	2.53	0.41
1:A:540:LYS:HB2	1:A:542:ILE:HD12	2.03	0.41
2:B:422:LEU:CD1	2:B:426:TRP:CZ3	3.04	0.41
1:A:407:GLN:OE1	2:B:394:GLN:HG2	2.21	0.41
1:A:458:VAL:CG2	2:B:286:THR:HG21	2.47	0.41
1:A:500:GLN:OE1	2:B:422:LEU:HD21	2.20	0.41
1:A:50:ILE:HG21	1:A:145:GLN:CG	2.51	0.40
2:B:270:ILE:C	2:B:272:PRO:HD3	2.41	0.40
1:A:264:LEU:HA	1:A:264:LEU:HD23	1.64	0.40
2:B:234:LEU:O	2:B:234:LEU:HD12	2.22	0.40

There are no symmetry-related clashes.

## 5.3 Torsion angles [i](#)

### 5.3.1 Protein backbone [i](#)

In the following table, the Percentiles column shows the percent Ramachandran outliers of the chain as a percentile score with respect to all X-ray entries followed by that with respect to entries of similar resolution.

The Analysed column shows the number of residues for which the backbone conformation was analysed, and the total number of residues.

Mol	Chain	Analysed	Favoured	Allowed	Outliers	Percentiles	
1	A	538/554 (97%)	500 (93%)	37 (7%)	1 (0%)	47	73
2	B	399/428 (93%)	378 (95%)	21 (5%)	0	100	100
All	All	937/982 (95%)	878 (94%)	58 (6%)	1 (0%)	51	78

All (1) Ramachandran outliers are listed below:

Mol	Chain	Res	Type
1	A	19	PRO

### 5.3.2 Protein sidechains [i](#)

In the following table, the Percentiles column shows the percent sidechain outliers of the chain as a percentile score with respect to all X-ray entries followed by that with respect to entries of similar resolution.

The Analysed column shows the number of residues for which the sidechain conformation was analysed, and the total number of residues.

Mol	Chain	Analysed	Rotameric	Outliers	Percentiles	
1	A	394/494 (80%)	372 (94%)	22 (6%)	21	45
2	B	331/390 (85%)	314 (95%)	17 (5%)	24	50
All	All	725/884 (82%)	686 (95%)	39 (5%)	22	47

All (39) residues with a non-rotameric sidechain are listed below:

Mol	Chain	Res	Type
1	A	50	ILE
1	A	56	TYR
1	A	90	VAL
1	A	111	VAL
1	A	115	TYR

*Continued on next page...*

*Continued from previous page...*

Mol	Chain	Res	Type
1	A	123	ASP
1	A	130	PHE
1	A	139	THR
1	A	216	THR
1	A	218	ASP
1	A	241	VAL
1	A	361	HIS
1	A	396	GLU
1	A	419	THR
1	A	497	THR
1	A	505	ILE
1	A	512	LYS
1	A	523	GLU
1	A	527	LYS
1	A	545	ASN
1	A	549	ASP
1	A	550	LYS
2	B	7	THR
2	B	39	THR
2	B	63	ILE
2	B	64	LYS
2	B	82	LYS
2	B	94	ILE
2	B	118	VAL
2	B	131	THR
2	B	154	LYS
2	B	163	SER
2	B	232	TYR
2	B	277	ARG
2	B	323	LYS
2	B	347	LYS
2	B	377	THR
2	B	414	TRP
2	B	424	LYS

Sometimes sidechains can be flipped to improve hydrogen bonding and reduce clashes. All (4) such sidechains are listed below:

Mol	Chain	Res	Type
1	A	182	GLN
1	A	336	GLN
2	B	137	ASN
2	B	208	HIS

### 5.3.3 RNA [i](#)

There are no RNA molecules in this entry.

## 5.4 Non-standard residues in protein, DNA, RNA chains [i](#)

There are no non-standard protein/DNA/RNA residues in this entry.

## 5.5 Carbohydrates [i](#)

There are no monosaccharides in this entry.

## 5.6 Ligand geometry [i](#)

1 ligand is modelled in this entry.

In the following table, the Counts columns list the number of bonds (or angles) for which Mogul statistics could be retrieved, the number of bonds (or angles) that are observed in the model and the number of bonds (or angles) that are defined in the Chemical Component Dictionary. The Link column lists molecule types, if any, to which the group is linked. The Z score for a bond length (or angle) is the number of standard deviations the observed value is removed from the expected value. A bond length (or angle) with  $|Z| > 2$  is considered an outlier worth inspection. RMSZ is the root-mean-square of all Z scores of the bond lengths (or angles).

Mol	Type	Chain	Res	Link	Bond lengths			Bond angles		
					Counts	RMSZ	# Z  > 2	Counts	RMSZ	# Z  > 2
3	VU8	A	601	-	27,27,27	1.90	5 (18%)	36,36,36	1.47	4 (11%)

In the following table, the Chirals column lists the number of chiral outliers, the number of chiral centers analysed, the number of these observed in the model and the number defined in the Chemical Component Dictionary. Similar counts are reported in the Torsion and Rings columns. '-' means no outliers of that kind were identified.

Mol	Type	Chain	Res	Link	Chirals	Torsions	Rings
3	VU8	A	601	-	-	3/18/18/18	0/2/2/2

All (5) bond length outliers are listed below:

Mol	Chain	Res	Type	Atoms	Z	Observed(Å)	Ideal(Å)
3	A	601	VU8	C16-N2	7.21	1.45	1.35
3	A	601	VU8	C7-C8	3.61	1.52	1.44
3	A	601	VU8	C10-CL2	2.39	1.79	1.74

*Continued on next page...*

*Continued from previous page...*

Mol	Chain	Res	Type	Atoms	Z	Observed(Å)	Ideal(Å)
3	A	601	VU8	C17-C16	2.13	1.55	1.49
3	A	601	VU8	C12-C4	-2.03	1.36	1.40

All (4) bond angle outliers are listed below:

Mol	Chain	Res	Type	Atoms	Z	Observed(°)	Ideal(°)
3	A	601	VU8	C17-C16-N2	3.86	126.15	118.00
3	A	601	VU8	C18-C17-C16	2.98	127.42	121.33
3	A	601	VU8	C13-C14-N2	-2.87	105.43	112.29
3	A	601	VU8	O3-C16-N2	-2.63	114.44	121.47

There are no chirality outliers.

All (3) torsion outliers are listed below:

Mol	Chain	Res	Type	Atoms
3	A	601	VU8	N2-C16-C17-C18
3	A	601	VU8	O3-C16-C17-C18
3	A	601	VU8	O2-C13-C14-N2

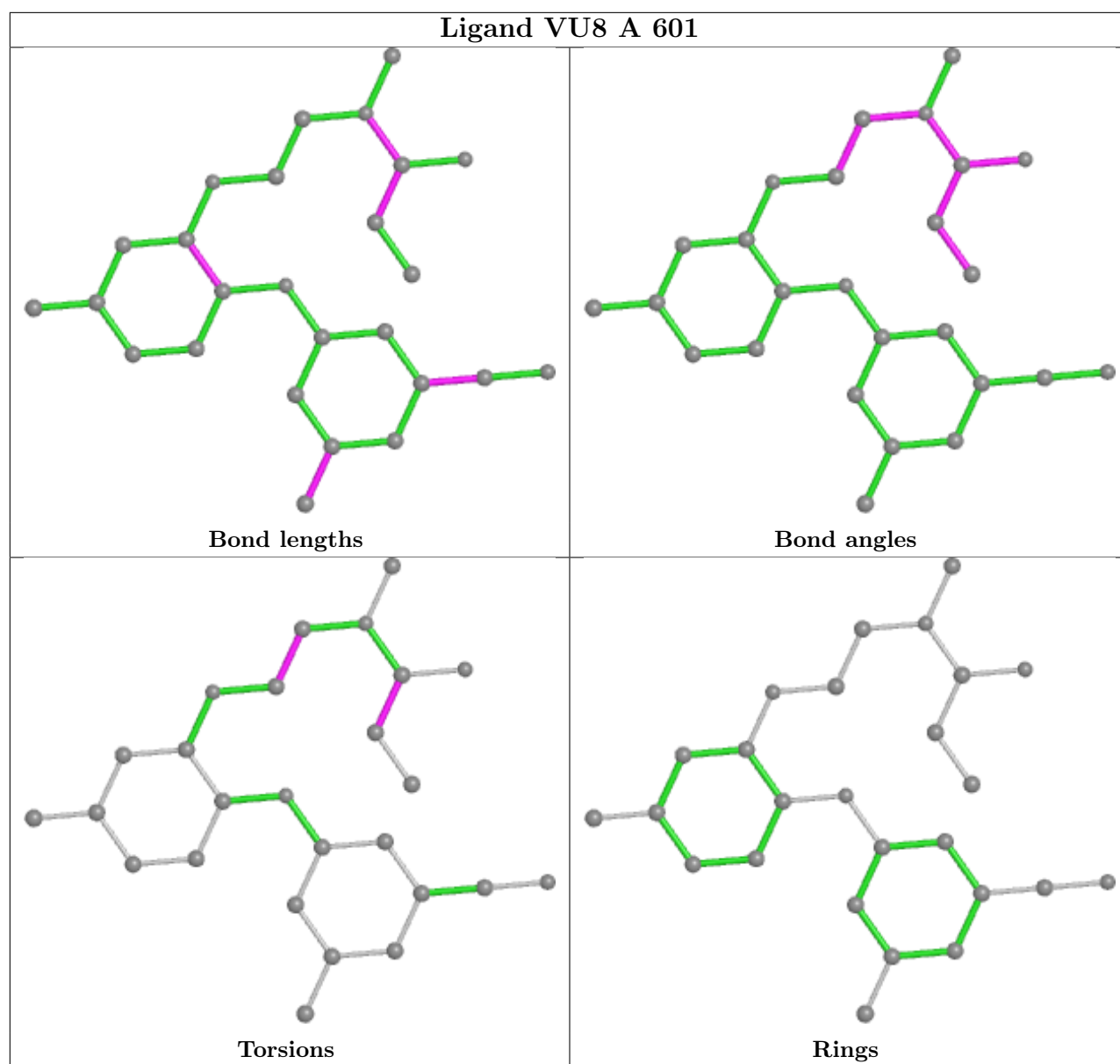
There are no ring outliers.

1 monomer is involved in 2 short contacts:

Mol	Chain	Res	Type	Clashes	Symm-Clashes
3	A	601	VU8	2	0

The following is a two-dimensional graphical depiction of Mogul quality analysis of bond lengths, bond angles, torsion angles, and ring geometry for all instances of the Ligand of Interest. In addition, ligands with molecular weight > 250 and outliers as shown on the validation Tables will also be included. For torsion angles, if less than 5% of the Mogul distribution of torsion angles is within 10 degrees of the torsion angle in question, then that torsion angle is considered an outlier. Any bond that is central to one or more torsion angles identified as an outlier by Mogul will be highlighted in the graph. For rings, the root-mean-square deviation (RMSD) between the ring in question and similar rings identified by Mogul is calculated over all ring torsion angles. If the average RMSD is greater than 60 degrees and the minimal RMSD between the ring in question and any Mogul-identified rings is also greater than 60 degrees, then that ring is considered an outlier. The outliers are highlighted in purple. The color gray indicates Mogul did not find sufficient equivalents in the CSD to analyse the geometry.





## 5.7 Other polymers [i](#)

There are no such residues in this entry.

## 5.8 Polymer linkage issues [i](#)

There are no chain breaks in this entry.

## 6 Fit of model and data [i](#)

### 6.1 Protein, DNA and RNA chains [i](#)

In the following table, the column labelled ‘#RSRZ > 2’ contains the number (and percentage) of RSRZ outliers, followed by percent RSRZ outliers for the chain as percentile scores relative to all X-ray entries and entries of similar resolution. The OWAB column contains the minimum, median, 95<sup>th</sup> percentile and maximum values of the occupancy-weighted average B-factor per residue. The column labelled ‘Q < 0.9’ lists the number of (and percentage) of residues with an average occupancy less than 0.9.

Mol	Chain	Analysed	<RSRZ>	#RSRZ>2	OWAB(Å <sup>2</sup> )	Q<0.9
1	A	546/554 (98%)	0.53	58 (10%) <b>6</b> <b>4</b>	43, 92, 152, 162	0
2	B	406/428 (94%)	0.37	30 (7%) <b>14</b> <b>12</b>	48, 86, 143, 159	0
All	All	952/982 (96%)	0.46	88 (9%) <b>9</b> <b>7</b>	43, 88, 147, 162	0

All (88) RSRZ outliers are listed below:

Mol	Chain	Res	Type	RSRZ
2	B	232	TYR	9.0
2	B	230	MET	6.3
1	A	16	MET	5.7
1	A	299	ALA	5.6
1	A	300	GLU	5.2
1	A	27	THR	5.1
1	A	294	PRO	4.9
1	A	552	VAL	4.9
1	A	301	LEU	4.5
1	A	52	PRO	4.4
1	A	26	LEU	4.4
1	A	304	ALA	4.3
2	B	212	TRP	4.3
1	A	292	VAL	4.1
2	B	87	PHE	4.0
1	A	251	SER	4.0
2	B	171	PHE	3.8
1	A	305	GLU	3.7
2	B	170	PRO	3.5
1	A	551	LEU	3.5
1	A	261	VAL	3.5
1	A	17	ASP	3.4
1	A	67	ASP	3.3
2	B	14	PRO	3.3

*Continued on next page...*

*Continued from previous page...*

<b>Mol</b>	<b>Chain</b>	<b>Res</b>	<b>Type</b>	<b>RSRZ</b>
1	A	160	PHE	3.3
2	B	150	PRO	3.2
2	B	198	HIS	3.2
1	A	221	HIS	3.2
1	A	47	ILE	3.1
1	A	61	PHE	3.1
1	A	71	TRP	3.1
1	A	69	THR	3.0
1	A	135	ILE	3.0
1	A	291	GLU	2.9
1	A	298	GLU	2.9
1	A	549	ASP	2.9
1	A	62	ALA	2.9
1	A	146	TYR	2.8
2	B	83	ARG	2.8
2	B	165	THR	2.8
2	B	227	PHE	2.8
2	B	124	PHE	2.7
2	B	193	LEU	2.7
2	B	362	THR	2.7
1	A	255	ASN	2.7
1	A	51	GLY	2.7
1	A	19	PRO	2.6
1	A	550	LYS	2.6
2	B	69	THR	2.6
1	A	282	LEU	2.6
2	B	149	LEU	2.6
2	B	4	PRO	2.5
1	A	546	GLU	2.5
1	A	15	GLY	2.5
2	B	229	TRP	2.5
1	A	285	GLY	2.5
2	B	186	ASP	2.4
2	B	357	MET	2.4
2	B	94	ILE	2.4
1	A	278	GLN	2.4
1	A	245	VAL	2.4
1	A	254	VAL	2.4
2	B	67	ASP	2.3
1	A	545	ASN	2.3
1	A	252	TRP	2.3
1	A	25	PRO	2.3

*Continued on next page...*

*Continued from previous page...*

Mol	Chain	Res	Type	RSRZ
2	B	284	ARG	2.3
1	A	193	LEU	2.3
2	B	234	LEU	2.3
1	A	68	SER	2.2
1	A	256	ASP	2.2
1	A	542	ILE	2.2
2	B	361	HIS	2.2
1	A	151	GLN	2.2
2	B	354[A]	TYR	2.2
1	A	124	PHE	2.1
1	A	130	PHE	2.1
1	A	185	ASP	2.1
2	B	179	VAL	2.1
1	A	74	LEU	2.1
2	B	68	SER	2.1
1	A	290	THR	2.1
1	A	262	GLY	2.1
1	A	21	VAL	2.1
1	A	308	GLU	2.1
1	A	66	LYS	2.0
2	B	95	PRO	2.0
1	A	306	ASN	2.0

## 6.2 Non-standard residues in protein, DNA, RNA chains [\(i\)](#)

There are no non-standard protein/DNA/RNA residues in this entry.

## 6.3 Carbohydrates [\(i\)](#)

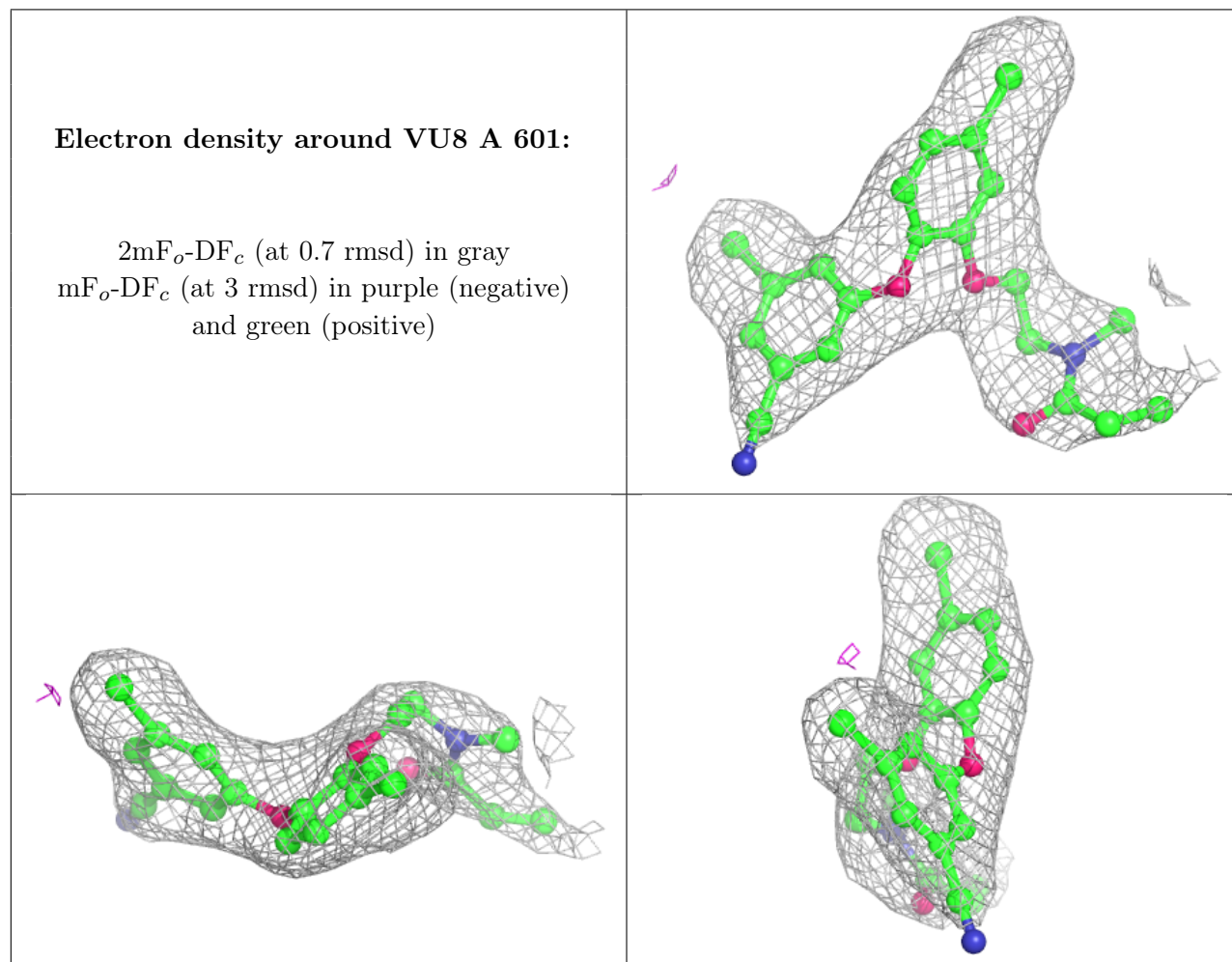
There are no monosaccharides in this entry.

## 6.4 Ligands [\(i\)](#)

In the following table, the Atoms column lists the number of modelled atoms in the group and the number defined in the chemical component dictionary. The B-factors column lists the minimum, median, 95<sup>th</sup> percentile and maximum values of B factors of atoms in the group. The column labelled 'Q< 0.9' lists the number of atoms with occupancy less than 0.9.

Mol	Type	Chain	Res	Atoms	RSCC	RSR	B-factors(Å <sup>2</sup> )	Q<0.9
3	VU8	A	601	26/26	0.94	0.19	65,73,84,88	0

The following is a graphical depiction of the model fit to experimental electron density of all instances of the Ligand of Interest. In addition, ligands with molecular weight > 250 and outliers as shown on the geometry validation Tables will also be included. Each fit is shown from different orientation to approximate a three-dimensional view.



## 6.5 Other polymers [i](#)

There are no such residues in this entry.