



Full wwPDB X-ray Structure Validation Report

Oct 30, 2023 – 05:40 PM EDT

PDB ID : 8U6L
Title : Crystal Structure of HIV-1 Reverse Transcriptase in Complex with N-(2-(5-chloro-2-((6-cyanonaphthalen-1-yl)oxy)phenoxy)ethyl)-N-methylacrylamide (JLJ748), a non-nucleoside inhibitor
Authors : Prucha, G.; Henry, S.; Jorgensen, W.L.; Anderson, K.S.
Deposited on : 2023-09-13
Resolution : 2.49 Å(reported)

This is a Full wwPDB X-ray Structure Validation Report for a publicly released PDB entry.

We welcome your comments at validation@mail.wwpdb.org

A user guide is available at

<https://www.wwpdb.org/validation/2017/XrayValidationReportHelp>

with specific help available everywhere you see the  symbol.

The types of validation reports are described at

<http://www.wwpdb.org/validation/2017/FAQs#types>.

The following versions of software and data (see [references](#) ) were used in the production of this report:

MolProbity : 4.02b-467
Mogul : 1.8.5 (274361), CSD as541be (2020)
Xtriage (Phenix) : 1.13
EDS : 2.36
buster-report : 1.1.7 (2018)
Percentile statistics : 20191225.v01 (using entries in the PDB archive December 25th 2019)
Refmac : 5.8.0158
CCP4 : 7.0.044 (Gargrove)
Ideal geometry (proteins) : Engh & Huber (2001)
Ideal geometry (DNA, RNA) : Parkinson et al. (1996)
Validation Pipeline (wwPDB-VP) : 2.36

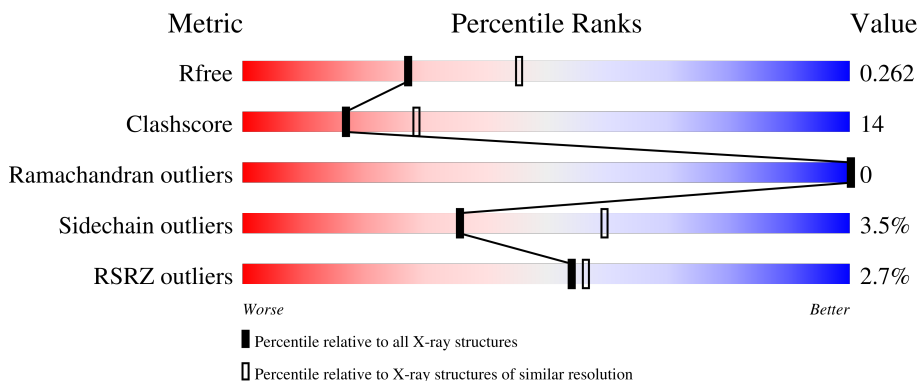
1 Overall quality at a glance

The following experimental techniques were used to determine the structure:

X-RAY DIFFRACTION


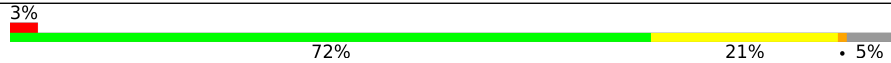
The reported resolution of this entry is 2.49 Å.

Percentile scores (ranging between 0-100) for global validation metrics of the entry are shown in the following graphic. The table shows the number of entries on which the scores are based.



Metric	Whole archive (#Entries)	Similar resolution (#Entries, resolution range(Å))
R_{free}	130704	5857 (2.50-2.46)
Clashscore	141614	6594 (2.50-2.46)
Ramachandran outliers	138981	6469 (2.50-2.46)
Sidechain outliers	138945	6471 (2.50-2.46)
RSRZ outliers	127900	5738 (2.50-2.46)

The table below summarises the geometric issues observed across the polymeric chains and their fit to the electron density. The red, orange, yellow and green segments of the lower bar indicate the fraction of residues that contain outliers for ≥ 3 , 2, 1 and 0 types of geometric quality criteria respectively. A grey segment represents the fraction of residues that are not modelled. The numeric value for each fraction is indicated below the corresponding segment, with a dot representing fractions $\leq 5\%$. The upper red bar (where present) indicates the fraction of residues that have poor fit to the electron density. The numeric value is given above the bar.

Mol	Chain	Length	Quality of chain
1	A	557	 2% 70% 27% ..
2	B	428	 3% 72% 21% • 5%

2 Entry composition [i](#)

There are 5 unique types of molecules in this entry. The entry contains 7626 atoms, of which 19 are hydrogens and 0 are deuteriums.

In the tables below, the ZeroOcc column contains the number of atoms modelled with zero occupancy, the AltConf column contains the number of residues with at least one atom in alternate conformation and the Trace column contains the number of residues modelled with at most 2 atoms.

- Molecule 1 is a protein called Reverse transcriptase/ribonuclease H.

Mol	Chain	Residues	Atoms					ZeroOcc	AltConf	Trace
			Total	C	N	O	S			
1	A	550	4326	2801	723	795	7	0	0	0

There are 5 discrepancies between the modelled and reference sequences:

Chain	Residue	Modelled	Actual	Comment	Reference
A	-1	MET	-	expression tag	UNP P03366
A	0	VAL	-	expression tag	UNP P03366
A	172	ALA	LYS	engineered mutation	UNP P03366
A	173	ALA	LYS	engineered mutation	UNP P03366
A	280	SER	CYS	engineered mutation	UNP P03366

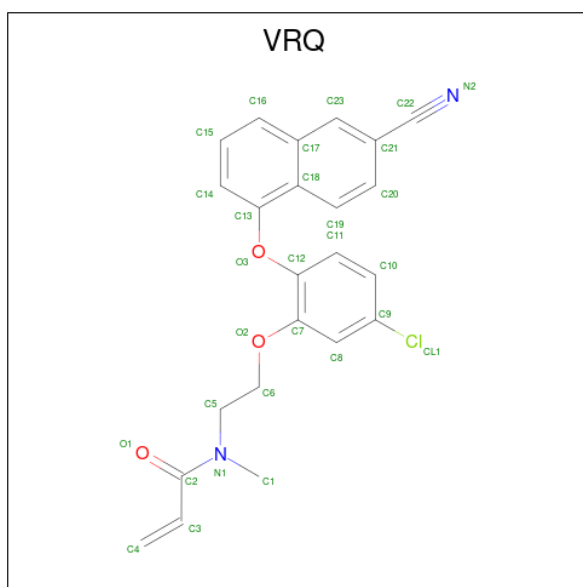
- Molecule 2 is a protein called p51 RT.

Mol	Chain	Residues	Atoms					ZeroOcc	AltConf	Trace
			Total	C	N	O	S			
2	B	405	3227	2096	530	596	5	0	0	0

There is a discrepancy between the modelled and reference sequences:

Chain	Residue	Modelled	Actual	Comment	Reference
B	280	SER	CYS	engineered mutation	UNP P03366

- Molecule 3 is N-(2-{5-chloro-2-[(6-cyanonaphthalen-1-yl)oxy]phenoxy}ethyl)-N-methyl prop-2-enamide (three-letter code: VRQ) (formula: C₂₃H₁₉ClN₂O₃) (labeled as "Ligand of Interest" by depositor).



Mol	Chain	Residues	Atoms					ZeroOcc	AltConf	
			Total	C	Cl	H	N			O
3	A	1	48	23	1	19	2	3	0	0

- Molecule 4 is MAGNESIUM ION (three-letter code: MG) (formula: Mg).

Mol	Chain	Residues	Atoms		ZeroOcc	AltConf
			Total	Mg		
4	A	2	2	2	0	0
4	B	1	1	1	0	0

- Molecule 5 is water.

Mol	Chain	Residues	Atoms		ZeroOcc	AltConf
			Total	O		
5	A	12	12	12	0	0
5	B	10	10	10	0	0

4 Data and refinement statistics

Property	Value	Source
Space group	C 1 2 1	Depositor
Cell constants a, b, c, α , β , γ	222.88Å 67.63Å 103.71Å 90.00° 107.88° 90.00°	Depositor
Resolution (Å)	31.61 – 2.49 31.61 – 2.49	Depositor EDS
% Data completeness (in resolution range)	99.0 (31.61-2.49) 99.0 (31.61-2.49)	Depositor EDS
R_{merge}	0.10	Depositor
R_{sym}	(Not available)	Depositor
$\langle I/\sigma(I) \rangle$ ¹	1.52 (at 2.48Å)	Xtrriage
Refinement program	PHENIX 1.20.1_4487	Depositor
R, R_{free}	0.221 , 0.267 0.221 , 0.262	Depositor DCC
R_{free} test set	1999 reflections (3.88%)	wwPDB-VP
Wilson B-factor (Å ²)	65.0	Xtrriage
Anisotropy	0.152	Xtrriage
Bulk solvent k_{sol} (e/Å ³), B_{sol} (Å ²)	0.31 , 48.1	EDS
L-test for twinning ²	$\langle L \rangle = 0.51$, $\langle L^2 \rangle = 0.35$	Xtrriage
Estimated twinning fraction	No twinning to report.	Xtrriage
F_o, F_c correlation	0.95	EDS
Total number of atoms	7626	wwPDB-VP
Average B, all atoms (Å ²)	71.0	wwPDB-VP

Xtrriage's analysis on translational NCS is as follows: *The largest off-origin peak in the Patterson function is 4.68% of the height of the origin peak. No significant pseudotranslation is detected.*

¹Intensities estimated from amplitudes.

²Theoretical values of $\langle |L| \rangle$, $\langle L^2 \rangle$ for acentric reflections are 0.5, 0.333 respectively for untwinned datasets, and 0.375, 0.2 for perfectly twinned datasets.

5 Model quality

5.1 Standard geometry

Bond lengths and bond angles in the following residue types are not validated in this section: MG, VRQ

The Z score for a bond length (or angle) is the number of standard deviations the observed value is removed from the expected value. A bond length (or angle) with $|Z| > 5$ is considered an outlier worth inspection. RMSZ is the root-mean-square of all Z scores of the bond lengths (or angles).

Mol	Chain	Bond lengths		Bond angles	
		RMSZ	# Z >5	RMSZ	# Z >5
1	A	0.44	0/4440	0.61	0/6059
2	B	0.47	0/3317	0.62	0/4528
All	All	0.45	0/7757	0.61	0/10587

There are no bond length outliers.

There are no bond angle outliers.

There are no chirality outliers.

There are no planarity outliers.

5.2 Too-close contacts

In the following table, the Non-H and H(model) columns list the number of non-hydrogen atoms and hydrogen atoms in the chain respectively. The H(added) column lists the number of hydrogen atoms added and optimized by MolProbity. The Clashes column lists the number of clashes within the asymmetric unit, whereas Symm-Clashes lists symmetry-related clashes.

Mol	Chain	Non-H	H(model)	H(added)	Clashes	Symm-Clashes
1	A	4326	0	4259	128	0
2	B	3227	0	3118	87	0
3	A	29	19	0	1	0
4	A	2	0	0	0	0
4	B	1	0	0	0	0
5	A	12	0	0	0	0
5	B	10	0	0	0	0
All	All	7607	19	7377	210	0

The all-atom clashscore is defined as the number of clashes found per 1000 atoms (including hydrogen atoms). The all-atom clashscore for this structure is 14.

All (210) close contacts within the same asymmetric unit are listed below, sorted by their clash magnitude.

Atom-1	Atom-2	Interatomic distance (Å)	Clash overlap (Å)
1:A:50:ILE:HD12	1:A:143:ARG:HB3	1.42	1.01
1:A:101:LYS:H	1:A:101:LYS:HZ2	1.14	0.91
2:B:254:VAL:HG13	2:B:283:LEU:HD22	1.56	0.88
2:B:423:VAL:HG23	2:B:426:TRP:HE3	1.40	0.87
1:A:31:ILE:HD11	1:A:132:ILE:HG22	1.57	0.86
1:A:296:THR:O	1:A:300:GLU:HG2	1.79	0.83
1:A:343:GLN:HG3	1:A:349:LEU:HD21	1.64	0.80
1:A:143:ARG:HG3	1:A:143:ARG:HH11	1.48	0.79
2:B:13:LYS:HE3	2:B:85:GLN:N	2.01	0.76
2:B:184:MET:HE3	2:B:184:MET:HA	1.68	0.76
2:B:13:LYS:HE3	2:B:85:GLN:H	1.51	0.76
2:B:101:LYS:O	2:B:236:PRO:HB2	1.85	0.76
1:A:265:ASN:OD1	1:A:353:LYS:NZ	2.20	0.73
1:A:31:ILE:CD1	1:A:132:ILE:HG22	2.18	0.73
1:A:84:THR:HG21	1:A:153:TRP:HE1	1.54	0.72
1:A:518:VAL:O	1:A:522:ILE:HG13	1.91	0.71
1:A:28:GLU:HA	1:A:31:ILE:HG22	1.72	0.70
1:A:195:ILE:O	1:A:199:ARG:HG3	1.91	0.70
1:A:473:THR:HG23	1:A:476:LYS:H	1.57	0.69
2:B:114:ALA:HB2	2:B:214:LEU:HG	1.73	0.69
2:B:17:ASP:O	2:B:83:ARG:NH1	2.27	0.67
1:A:50:ILE:CD1	1:A:143:ARG:HB3	2.20	0.67
2:B:296:THR:HG23	2:B:299:ALA:H	1.59	0.67
1:A:38:CYS:SG	1:A:132:ILE:HD11	2.35	0.66
2:B:175:ASN:OD1	2:B:201:LYS:HE2	1.96	0.66
2:B:210:LEU:CD2	2:B:215:THR:HA	2.26	0.66
2:B:282:LEU:HD11	2:B:296:THR:HG22	1.78	0.66
1:A:204:GLU:O	1:A:207:GLN:HG2	1.94	0.66
1:A:246:LEU:HD22	1:A:260:LEU:CD1	2.26	0.66
1:A:175:ASN:HB3	1:A:178:ILE:HD13	1.78	0.66
2:B:110:ASP:O	2:B:216:THR:HG22	1.95	0.66
1:A:28:GLU:O	1:A:31:ILE:HG22	1.96	0.66
1:A:94:ILE:HG22	1:A:183:TYR:HE1	1.59	0.65
1:A:454:LYS:HD2	1:A:552:VAL:O	1.97	0.65
1:A:413:GLU:HA	1:A:413:GLU:OE1	1.96	0.65
1:A:191:SER:OG	1:A:198:HIS:ND1	2.24	0.64
1:A:435:VAL:HG22	2:B:290:THR:HG21	1.78	0.64
2:B:247:PRO:O	2:B:307:ARG:NH2	2.28	0.64
1:A:442:VAL:HB	1:A:481:ALA:HB1	1.80	0.64
2:B:366:LYS:O	2:B:370:GLU:HG3	1.97	0.64

Continued on next page...

Continued from previous page...

Atom-1	Atom-2	Interatomic distance (Å)	Clash overlap (Å)
2:B:292:VAL:C	2:B:293:ILE:HD13	2.18	0.64
2:B:423:VAL:HG23	2:B:426:TRP:CE3	2.27	0.64
1:A:259:LYS:O	1:A:263:LYS:HG3	1.98	0.63
2:B:13:LYS:HE3	2:B:85:GLN:HB3	1.81	0.62
1:A:394:GLN:HG2	1:A:416:PHE:CE2	2.35	0.62
2:B:254:VAL:HG13	2:B:283:LEU:CD2	2.29	0.62
1:A:28:GLU:HA	1:A:31:ILE:CG2	2.29	0.62
1:A:50:ILE:HD12	1:A:143:ARG:CB	2.26	0.62
1:A:19:PRO:HG3	1:A:80:LEU:HB2	1.83	0.61
1:A:97:PRO:HG2	1:A:232:TYR:CD1	2.36	0.60
2:B:84:THR:O	2:B:87:PHE:HB3	2.02	0.60
1:A:257:ILE:HG22	1:A:283:LEU:HD11	1.83	0.60
1:A:90:VAL:HG21	1:A:157:PRO:HB2	1.83	0.60
1:A:246:LEU:HD22	1:A:260:LEU:HD12	1.83	0.60
1:A:296:THR:HG22	1:A:298:GLU:H	1.67	0.59
1:A:202:ILE:O	1:A:206:ARG:HG3	2.03	0.59
2:B:167:ILE:O	2:B:208:HIS:NE2	2.23	0.59
2:B:210:LEU:HD21	2:B:215:THR:HA	1.85	0.58
1:A:88:TRP:NE1	2:B:143:ARG:HD2	2.19	0.58
1:A:28:GLU:CA	1:A:31:ILE:HG22	2.34	0.58
1:A:405:TYR:CE2	1:A:407:GLN:HB3	2.38	0.58
1:A:28:GLU:C	1:A:31:ILE:HG22	2.24	0.57
1:A:31:ILE:HD13	1:A:133:PRO:HD2	1.85	0.57
2:B:241:VAL:HG22	2:B:350:LYS:HA	1.86	0.57
2:B:248:GLU:HG2	2:B:307:ARG:NH2	2.20	0.57
1:A:101:LYS:HB2	1:A:101:LYS:NZ	2.19	0.56
2:B:88:TRP:CD1	2:B:154:LYS:HB2	2.41	0.56
1:A:296:THR:HG22	1:A:297:GLU:N	2.20	0.56
1:A:184:MET:HA	1:A:184:MET:HE2	1.87	0.56
1:A:516:GLU:O	1:A:520:GLN:HG3	2.05	0.56
1:A:80:LEU:O	1:A:84:THR:HG23	2.05	0.56
2:B:354:TYR:CD2	2:B:374:LYS:HD3	2.40	0.56
1:A:195:ILE:O	1:A:195:ILE:HD12	2.06	0.56
1:A:94:ILE:HG22	1:A:183:TYR:CE1	2.41	0.56
2:B:401:TRP:HE3	2:B:404:GLU:HG3	1.71	0.55
1:A:406:TRP:NE1	2:B:420:PRO:HB3	2.21	0.55
2:B:195:ILE:HD11	2:B:199:ARG:NE	2.21	0.55
1:A:266:TRP:O	1:A:269:GLN:HG2	2.05	0.55
1:A:184:MET:HA	1:A:184:MET:CE	2.37	0.55
1:A:402:TRP:HB2	1:A:409:THR:HG21	1.88	0.55
2:B:143:ARG:HG2	2:B:143:ARG:HH11	1.72	0.55

Continued on next page...

Continued from previous page...

Atom-1	Atom-2	Interatomic distance (Å)	Clash overlap (Å)
2:B:292:VAL:O	2:B:293:ILE:HD13	2.07	0.55
1:A:452:LEU:CD2	1:A:470:THR:HG22	2.37	0.54
1:A:143:ARG:HG3	1:A:143:ARG:NH1	2.21	0.54
1:A:357:MET:O	1:A:358:ARG:HG2	2.08	0.54
2:B:314:VAL:HG12	2:B:315:HIS:H	1.73	0.54
2:B:379:SER:OG	2:B:387:PRO:HD3	2.08	0.53
1:A:447:ASN:HB3	1:A:450:THR:OG1	2.08	0.53
2:B:84:THR:HG22	2:B:87:PHE:HB3	1.90	0.53
1:A:441:TYR:CD2	1:A:544:GLY:HA3	2.43	0.53
1:A:453:GLY:O	1:A:469:LEU:N	2.39	0.53
1:A:31:ILE:O	1:A:35:VAL:HG23	2.09	0.52
1:A:441:TYR:CE2	1:A:544:GLY:HA3	2.45	0.52
2:B:282:LEU:HD11	2:B:296:THR:CG2	2.38	0.52
1:A:17:ASP:O	1:A:83:ARG:HD3	2.10	0.52
1:A:522:ILE:O	1:A:526:ILE:HG13	2.10	0.52
2:B:85:GLN:HA	2:B:88:TRP:CE2	2.45	0.52
1:A:79:GLU:O	1:A:83:ARG:HG3	2.09	0.51
2:B:317:VAL:HG13	2:B:317:VAL:O	2.11	0.51
1:A:342:TYR:HA	1:A:349:LEU:HD22	1.93	0.51
2:B:13:LYS:HB3	2:B:14:PRO:HD2	1.92	0.51
2:B:390:LYS:NZ	2:B:415:GLU:OE2	2.45	0.51
1:A:276:VAL:HG22	1:A:353:LYS:HE3	1.92	0.50
2:B:92:LEU:CB	2:B:158:ALA:HB1	2.41	0.50
2:B:174:GLN:HB2	2:B:175:ASN:ND2	2.26	0.50
2:B:422:LEU:HD23	2:B:422:LEU:N	2.25	0.50
1:A:197:GLN:O	1:A:200:THR:HB	2.12	0.50
2:B:242:GLN:HA	2:B:242:GLN:NE2	2.25	0.50
1:A:79:GLU:OE2	1:A:83:ARG:NE	2.36	0.50
1:A:97:PRO:HG2	1:A:232:TYR:CE1	2.47	0.50
1:A:255:ASN:HB2	1:A:289:LEU:HB3	1.94	0.50
1:A:101:LYS:HZ2	1:A:101:LYS:N	1.97	0.49
1:A:458:VAL:HG22	1:A:464:GLN:HG2	1.94	0.49
1:A:84:THR:HG22	1:A:124:PHE:HZ	1.78	0.49
1:A:114:ALA:HB1	1:A:160:PHE:CE1	2.46	0.49
1:A:195:ILE:HD11	1:A:199:ARG:CZ	2.41	0.49
1:A:88:TRP:CE2	2:B:143:ARG:HD2	2.47	0.49
1:A:371:ALA:O	1:A:375:ILE:HD12	2.13	0.48
1:A:547:GLN:N	1:A:547:GLN:OE1	2.46	0.48
2:B:184:MET:HA	2:B:184:MET:CE	2.38	0.48
1:A:378:GLU:HG2	1:A:382:ILE:HD12	1.94	0.48
1:A:342:TYR:HA	1:A:349:LEU:CD2	2.43	0.48

Continued on next page...

Continued from previous page...

Atom-1	Atom-2	Interatomic distance (Å)	Clash overlap (Å)
2:B:358:ARG:HA	2:B:362:THR:CG2	2.44	0.48
1:A:59:PRO:HG2	1:A:76:ASP:HB3	1.96	0.48
1:A:58:THR:HG23	1:A:76:ASP:O	2.14	0.48
1:A:90:VAL:HG12	1:A:91:GLN:H	1.78	0.48
1:A:433:PRO:HD3	2:B:255:ASN:ND2	2.29	0.48
2:B:13:LYS:CE	2:B:86:ASP:H	2.27	0.47
1:A:103:LYS:HG3	3:A:601:VRQ:CL1	2.52	0.47
2:B:305:GLU:O	2:B:309:ILE:HG13	2.13	0.47
2:B:298:GLU:CD	2:B:298:GLU:H	2.18	0.47
1:A:379:SER:HA	1:A:383:TRP:CE3	2.50	0.47
2:B:58:THR:HG23	2:B:76:ASP:O	2.15	0.46
1:A:390:LYS:HE2	1:A:415:GLU:OE2	2.15	0.46
1:A:125:ARG:NH1	1:A:147:ASN:HB3	2.30	0.46
2:B:53:GLU:OE1	2:B:53:GLU:N	2.40	0.46
1:A:246:LEU:HD11	1:A:310:LEU:HD12	1.97	0.46
1:A:246:LEU:HD11	1:A:310:LEU:CD1	2.46	0.46
1:A:325:LEU:HD21	1:A:383:TRP:CE3	2.51	0.45
1:A:406:TRP:CH2	1:A:407:GLN:NE2	2.84	0.45
2:B:293:ILE:HD13	2:B:293:ILE:N	2.29	0.45
2:B:85:GLN:HA	2:B:88:TRP:NE1	2.31	0.45
1:A:178:ILE:HD12	1:A:178:ILE:H	1.81	0.45
2:B:195:ILE:HD11	2:B:199:ARG:HE	1.81	0.45
2:B:358:ARG:HA	2:B:362:THR:HG22	1.97	0.45
2:B:417:VAL:O	2:B:417:VAL:HG22	2.15	0.45
2:B:143:ARG:HG2	2:B:143:ARG:NH1	2.31	0.45
1:A:340:GLN:HG3	1:A:351:THR:HG22	1.98	0.45
2:B:154:LYS:HD3	2:B:184:MET:SD	2.58	0.45
1:A:332:GLN:HB2	1:A:336:GLN:O	2.17	0.44
2:B:174:GLN:H	2:B:174:GLN:HG2	1.53	0.44
1:A:49:LYS:HG3	1:A:144:TYR:CE1	2.52	0.44
1:A:31:ILE:HD11	1:A:133:PRO:O	2.16	0.44
1:A:209:LEU:HB3	1:A:214:LEU:HB2	1.99	0.44
2:B:63:ILE:HD13	2:B:74:LEU:HD22	2.00	0.44
1:A:257:ILE:HD13	1:A:282:LEU:HD23	2.00	0.44
2:B:326:ILE:O	2:B:341:ILE:HA	2.18	0.44
2:B:13:LYS:CE	2:B:85:GLN:HB3	2.46	0.43
1:A:382:ILE:HG22	1:A:383:TRP:CD2	2.53	0.43
1:A:320:ASP:OD2	1:A:323:LYS:HG3	2.18	0.43
2:B:13:LYS:HE2	2:B:86:ASP:H	1.82	0.43
1:A:363:ASN:HA	1:A:511:ASP:OD1	2.18	0.43
2:B:28:GLU:HG3	2:B:135:ILE:HD11	2.01	0.43

Continued on next page...

Continued from previous page...

Atom-1	Atom-2	Interatomic distance (Å)	Clash overlap (Å)
2:B:175:ASN:OD1	2:B:201:LYS:CE	2.66	0.43
1:A:31:ILE:CD1	1:A:133:PRO:O	2.67	0.43
2:B:195:ILE:HG23	2:B:196:GLY:N	2.34	0.43
2:B:279:LEU:HD23	2:B:299:ALA:HB1	2.00	0.43
2:B:87:PHE:HE2	2:B:155:GLY:HA2	1.82	0.42
2:B:207:GLN:OE1	2:B:207:GLN:HA	2.18	0.42
2:B:332:GLN:HA	2:B:424:LYS:HE3	2.00	0.42
1:A:101:LYS:HB2	1:A:101:LYS:HZ3	1.84	0.42
2:B:240:THR:OG1	2:B:241:VAL:N	2.52	0.42
1:A:194:GLU:O	1:A:196:GLY:N	2.53	0.42
1:A:17:ASP:OD1	1:A:18:GLY:N	2.44	0.42
2:B:420:PRO:HA	2:B:421:PRO:HD2	1.87	0.42
2:B:239:TRP:CD1	2:B:239:TRP:N	2.85	0.42
1:A:358:ARG:HD3	1:A:370:GLU:CD	2.40	0.42
2:B:210:LEU:HD23	2:B:215:THR:HA	1.99	0.42
1:A:178:ILE:HD12	1:A:178:ILE:N	2.35	0.41
1:A:198:HIS:O	1:A:202:ILE:HG12	2.20	0.41
1:A:424:LYS:HE3	1:A:426:TRP:CE3	2.54	0.41
1:A:350:LYS:HB2	1:A:350:LYS:HE2	1.87	0.41
1:A:441:TYR:HB3	1:A:548:VAL:CG2	2.50	0.41
2:B:103:LYS:O	2:B:236:PRO:HG2	2.20	0.41
1:A:186:ASP:HB3	1:A:188:TYR:CE1	2.55	0.41
2:B:366:LYS:HG3	2:B:405:TYR:CD2	2.55	0.41
1:A:279:LEU:O	1:A:282:LEU:HB2	2.20	0.41
2:B:88:TRP:CG	2:B:154:LYS:HB2	2.56	0.41
2:B:369:THR:HG21	2:B:405:TYR:HB2	2.01	0.41
1:A:21:VAL:CG1	1:A:59:PRO:HD3	2.51	0.41
1:A:426:TRP:HB3	1:A:526:ILE:HD13	2.03	0.41
2:B:13:LYS:CB	2:B:14:PRO:HD2	2.51	0.41
2:B:110:ASP:HB3	2:B:217:PRO:HG2	2.01	0.41
1:A:235:HIS:HB2	1:A:238:LYS:HG2	2.02	0.41
1:A:279:LEU:N	1:A:302:GLU:OE1	2.48	0.41
2:B:320:ASP:C	2:B:320:ASP:OD1	2.60	0.41
1:A:13:LYS:HE3	1:A:84:THR:O	2.21	0.41
1:A:92:LEU:H	1:A:92:LEU:HG	1.45	0.41
1:A:276:VAL:CG2	1:A:353:LYS:HE3	2.51	0.41
1:A:394:GLN:HG2	1:A:416:PHE:CD2	2.56	0.41
1:A:203:GLU:OE2	1:A:206:ARG:NH1	2.51	0.40
2:B:314:VAL:HG12	2:B:315:HIS:N	2.36	0.40
2:B:382:ILE:HG22	2:B:383:TRP:CD2	2.55	0.40
1:A:3:SER:OG	1:A:5:ILE:HB	2.21	0.40

Continued on next page...

Continued from previous page...

Atom-1	Atom-2	Interatomic distance (Å)	Clash overlap (Å)
1:A:84:THR:CG2	1:A:124:PHE:HZ	2.33	0.40
1:A:296:THR:CG2	1:A:297:GLU:N	2.85	0.40
1:A:427:TYR:CE2	1:A:525:LEU:HD13	2.57	0.40
2:B:184:MET:HE2	2:B:184:MET:HB3	1.86	0.40
1:A:47:ILE:HB	1:A:145:GLN:O	2.22	0.40
1:A:364:ASP:HB3	1:A:423:VAL:HG13	2.04	0.40

There are no symmetry-related clashes.

5.3 Torsion angles [i](#)

5.3.1 Protein backbone [i](#)

In the following table, the Percentiles column shows the percent Ramachandran outliers of the chain as a percentile score with respect to all X-ray entries followed by that with respect to entries of similar resolution.

The Analysed column shows the number of residues for which the backbone conformation was analysed, and the total number of residues.

Mol	Chain	Analysed	Favoured	Allowed	Outliers	Percentiles	
1	A	546/557 (98%)	511 (94%)	35 (6%)	0	100	100
2	B	395/428 (92%)	379 (96%)	16 (4%)	0	100	100
All	All	941/985 (96%)	890 (95%)	51 (5%)	0	100	100

There are no Ramachandran outliers to report.

5.3.2 Protein sidechains [i](#)

In the following table, the Percentiles column shows the percent sidechain outliers of the chain as a percentile score with respect to all X-ray entries followed by that with respect to entries of similar resolution.

The Analysed column shows the number of residues for which the sidechain conformation was analysed, and the total number of residues.

Mol	Chain	Analysed	Rotameric	Outliers	Percentiles	
1	A	453/495 (92%)	435 (96%)	18 (4%)	31	53
2	B	338/390 (87%)	328 (97%)	10 (3%)	41	65

Continued on next page...

Continued from previous page...

Mol	Chain	Analysed	Rotameric	Outliers	Percentiles
All	All	791/885 (89%)	763 (96%)	28 (4%)	36 59

All (28) residues with a non-rotameric sidechain are listed below:

Mol	Chain	Res	Type
1	A	27	THR
1	A	50	ILE
1	A	91	GLN
1	A	92	LEU
1	A	94	ILE
1	A	101	LYS
1	A	113	ASP
1	A	126	LYS
1	A	134	SER
1	A	195	ILE
1	A	216	THR
1	A	322	SER
1	A	338	THR
1	A	396	GLU
1	A	459	THR
1	A	480	GLN
1	A	514	GLU
1	A	548	VAL
2	B	7	THR
2	B	13	LYS
2	B	72	ARG
2	B	84	THR
2	B	102	LYS
2	B	174	GLN
2	B	216	THR
2	B	240	THR
2	B	287	LYS
2	B	417	VAL

Sometimes sidechains can be flipped to improve hydrogen bonding and reduce clashes. All (1) such sidechains are listed below:

Mol	Chain	Res	Type
1	A	519	ASN

5.3.3 RNA [i](#)

There are no RNA molecules in this entry.

5.4 Non-standard residues in protein, DNA, RNA chains [i](#)

There are no non-standard protein/DNA/RNA residues in this entry.

5.5 Carbohydrates [i](#)

There are no monosaccharides in this entry.

5.6 Ligand geometry [i](#)

Of 4 ligands modelled in this entry, 3 are monoatomic - leaving 1 for Mogul analysis.

In the following table, the Counts columns list the number of bonds (or angles) for which Mogul statistics could be retrieved, the number of bonds (or angles) that are observed in the model and the number of bonds (or angles) that are defined in the Chemical Component Dictionary. The Link column lists molecule types, if any, to which the group is linked. The Z score for a bond length (or angle) is the number of standard deviations the observed value is removed from the expected value. A bond length (or angle) with $|Z| > 2$ is considered an outlier worth inspection. RMSZ is the root-mean-square of all Z scores of the bond lengths (or angles).

Mol	Type	Chain	Res	Link	Bond lengths			Bond angles		
					Counts	RMSZ	# Z > 2	Counts	RMSZ	# Z > 2
3	VRQ	A	601	-	31,31,31	1.72	5 (16%)	41,42,42	1.32	5 (12%)

In the following table, the Chirals column lists the number of chiral outliers, the number of chiral centers analysed, the number of these observed in the model and the number defined in the Chemical Component Dictionary. Similar counts are reported in the Torsion and Rings columns. '-' means no outliers of that kind were identified.

Mol	Type	Chain	Res	Link	Chirals	Torsions	Rings
3	VRQ	A	601	-	-	4/18/18/18	0/3/3/3

All (5) bond length outliers are listed below:

Mol	Chain	Res	Type	Atoms	Z	Observed(Å)	Ideal(Å)
3	A	601	VRQ	C2-N1	6.59	1.44	1.35
3	A	601	VRQ	C21-C22	3.77	1.53	1.44
3	A	601	VRQ	C9-CL1	2.23	1.79	1.74

Continued on next page...

Continued from previous page...

Mol	Chain	Res	Type	Atoms	Z	Observed(Å)	Ideal(Å)
3	A	601	VRQ	C18-C17	-2.06	1.39	1.43
3	A	601	VRQ	O1-C2	-2.03	1.19	1.23

All (5) bond angle outliers are listed below:

Mol	Chain	Res	Type	Atoms	Z	Observed(°)	Ideal(°)
3	A	601	VRQ	O2-C6-C5	4.21	118.05	107.68
3	A	601	VRQ	C6-C5-N1	3.34	120.26	112.29
3	A	601	VRQ	C10-C9-CL1	3.06	124.14	119.35
3	A	601	VRQ	C13-C18-C17	2.35	120.96	118.01
3	A	601	VRQ	C8-C9-CL1	-2.03	116.61	119.15

There are no chirality outliers.

All (4) torsion outliers are listed below:

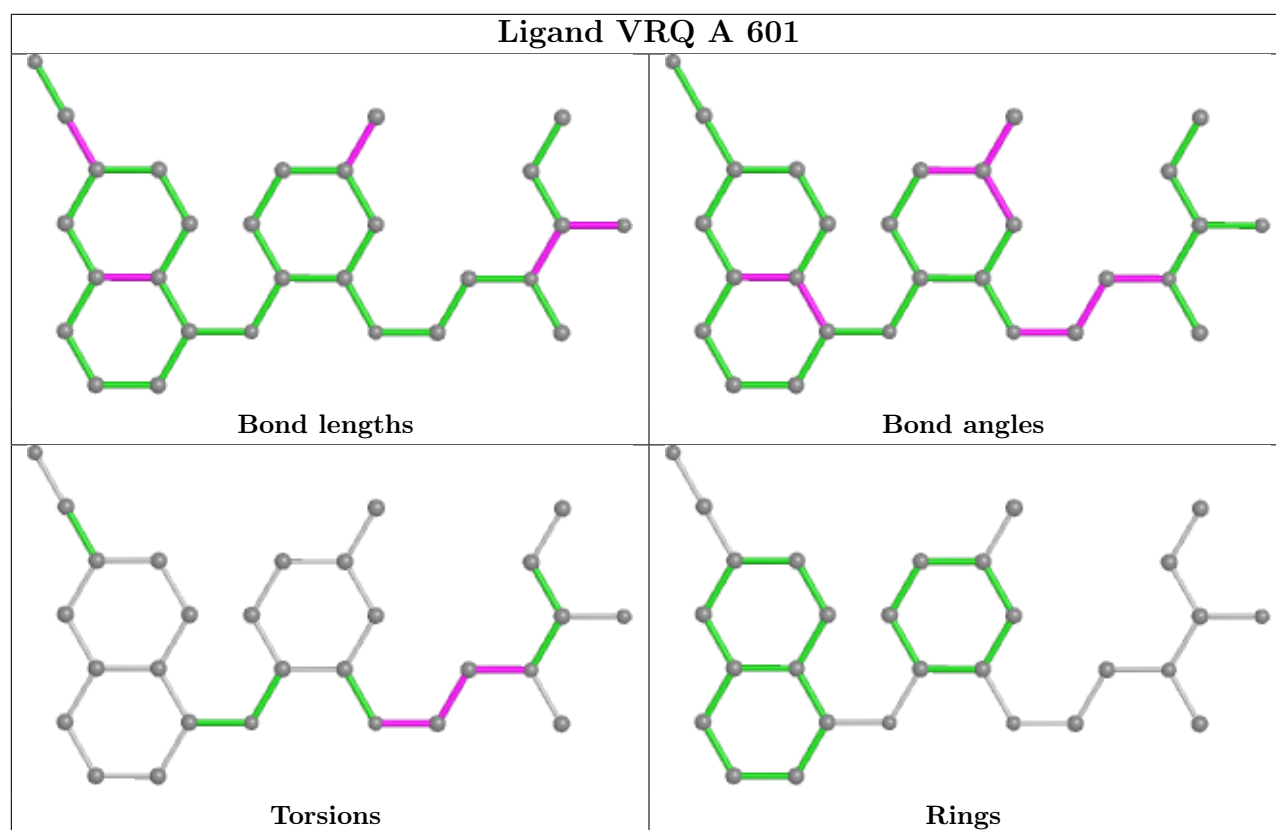
Mol	Chain	Res	Type	Atoms
3	A	601	VRQ	C6-C5-N1-C2
3	A	601	VRQ	C6-C5-N1-C1
3	A	601	VRQ	C5-C6-O2-C7
3	A	601	VRQ	N1-C5-C6-O2

There are no ring outliers.

1 monomer is involved in 1 short contact:

Mol	Chain	Res	Type	Clashes	Symm-Clashes
3	A	601	VRQ	1	0

The following is a two-dimensional graphical depiction of Mogul quality analysis of bond lengths, bond angles, torsion angles, and ring geometry for all instances of the Ligand of Interest. In addition, ligands with molecular weight > 250 and outliers as shown on the validation Tables will also be included. For torsion angles, if less than 5% of the Mogul distribution of torsion angles is within 10 degrees of the torsion angle in question, then that torsion angle is considered an outlier. Any bond that is central to one or more torsion angles identified as an outlier by Mogul will be highlighted in the graph. For rings, the root-mean-square deviation (RMSD) between the ring in question and similar rings identified by Mogul is calculated over all ring torsion angles. If the average RMSD is greater than 60 degrees and the minimal RMSD between the ring in question and any Mogul-identified rings is also greater than 60 degrees, then that ring is considered an outlier. The outliers are highlighted in purple. The color gray indicates Mogul did not find sufficient equivalents in the CSD to analyse the geometry.



5.7 Other polymers [i](#)

There are no such residues in this entry.

5.8 Polymer linkage issues [i](#)

There are no chain breaks in this entry.

6 Fit of model and data

6.1 Protein, DNA and RNA chains

In the following table, the column labelled ‘#RSRZ > 2’ contains the number (and percentage) of RSRZ outliers, followed by percent RSRZ outliers for the chain as percentile scores relative to all X-ray entries and entries of similar resolution. The OWAB column contains the minimum, median, 95th percentile and maximum values of the occupancy-weighted average B-factor per residue. The column labelled ‘Q < 0.9’ lists the number of (and percentage) of residues with an average occupancy less than 0.9.

Mol	Chain	Analysed	<RSRZ>	#RSRZ>2	OWAB(Å ²)	Q<0.9
1	A	550/557 (98%)	0.08	13 (2%) 59 61	48, 73, 102, 119	0
2	B	405/428 (94%)	0.10	13 (3%) 47 50	46, 66, 94, 112	0
All	All	955/985 (96%)	0.09	26 (2%) 54 56	46, 70, 100, 119	0

All (26) RSRZ outliers are listed below:

Mol	Chain	Res	Type	RSRZ
1	A	24	TRP	4.2
2	B	241	VAL	4.1
2	B	232	TYR	3.8
2	B	90	VAL	3.5
1	A	69	THR	3.4
1	A	26	LEU	2.8
2	B	69	THR	2.7
2	B	88	TRP	2.6
1	A	314	VAL	2.3
2	B	87	PHE	2.3
1	A	286	THR	2.3
1	A	91	GLN	2.3
1	A	290	THR	2.3
2	B	409	THR	2.3
2	B	15	GLY	2.2
1	A	554	ALA	2.2
1	A	74	LEU	2.2
2	B	313	PRO	2.2
2	B	68	SER	2.2
2	B	152	GLY	2.1
1	A	196	GLY	2.1
1	A	71	TRP	2.1
2	B	358	ARG	2.1
2	B	14	PRO	2.1

Continued on next page...

Continued from previous page...

Mol	Chain	Res	Type	RSRZ
1	A	293	ILE	2.1
1	A	247	PRO	2.0

6.2 Non-standard residues in protein, DNA, RNA chains [i](#)

There are no non-standard protein/DNA/RNA residues in this entry.

6.3 Carbohydrates [i](#)

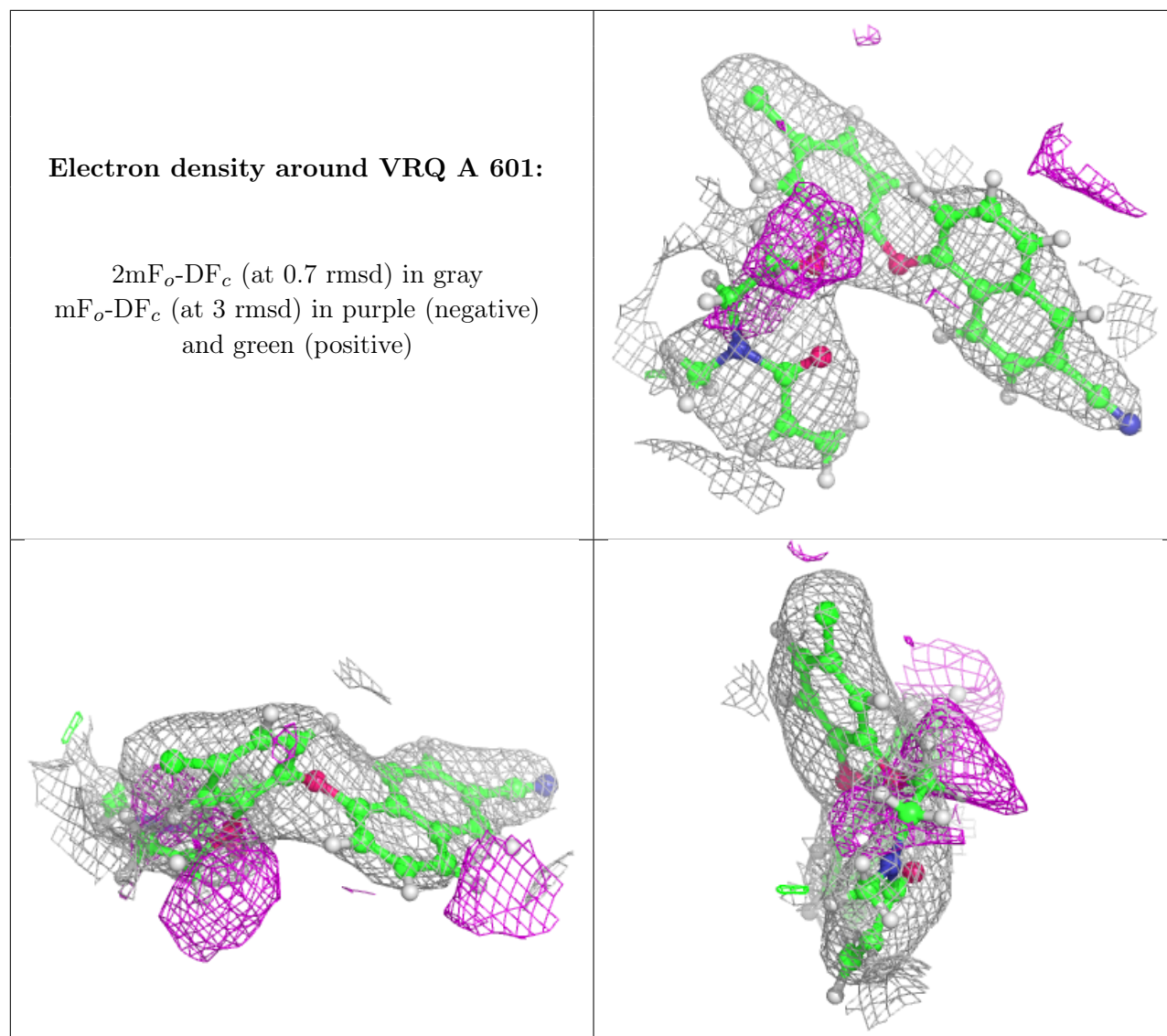
There are no monosaccharides in this entry.

6.4 Ligands [i](#)

In the following table, the Atoms column lists the number of modelled atoms in the group and the number defined in the chemical component dictionary. The B-factors column lists the minimum, median, 95th percentile and maximum values of B factors of atoms in the group. The column labelled 'Q<0.9' lists the number of atoms with occupancy less than 0.9.

Mol	Type	Chain	Res	Atoms	RSCC	RSR	B-factors(\AA^2)	Q<0.9
4	MG	A	603	1/1	0.83	0.39	74,74,74,74	0
4	MG	A	602	1/1	0.84	0.27	83,83,83,83	0
3	VRQ	A	601	29/29	0.93	0.19	61,72,86,90	0
4	MG	B	501	1/1	0.96	0.13	61,61,61,61	0

The following is a graphical depiction of the model fit to experimental electron density of all instances of the Ligand of Interest. In addition, ligands with molecular weight > 250 and outliers as shown on the geometry validation Tables will also be included. Each fit is shown from different orientation to approximate a three-dimensional view.



6.5 Other polymers [i](#)

There are no such residues in this entry.