



Full wwPDB X-ray Structure Validation Report ⓘ

Oct 2, 2023 – 11:30 PM EDT

PDB ID : 6UE3
Title : Crystal structure of HCV NS3/4A D168A protease in complex with PC (JZ01-15)
Authors : Zephyr, J.; Schiffer, C.A.
Deposited on : 2019-09-20
Resolution : 1.56 Å(reported)

This is a Full wwPDB X-ray Structure Validation Report for a publicly released PDB entry.

We welcome your comments at validation@mail.wwpdb.org

A user guide is available at

<https://www.wwpdb.org/validation/2017/XrayValidationReportHelp>

with specific help available everywhere you see the ⓘ symbol.

The types of validation reports are described at

<http://www.wwpdb.org/validation/2017/FAQs#types>.

The following versions of software and data (see [references ⓘ](#)) were used in the production of this report:

MolProbity : **FAILED**
Mogul : 1.8.5 (274361), CSD as541be (2020)
Xtrriage (Phenix) : 1.13
EDS : **FAILED**
buster-report : 1.1.7 (2018)
Percentile statistics : 20191225.v01 (using entries in the PDB archive December 25th 2019)
Ideal geometry (proteins) : Engh & Huber (2001)
Ideal geometry (DNA, RNA) : Parkinson et al. (1996)
Validation Pipeline (wwPDB-VP) : 2.35.1

1 Overall quality at a glance

The following experimental techniques were used to determine the structure:

X-RAY DIFFRACTION

The reported resolution of this entry is 1.56 Å.

There are no overall percentile quality scores available for this entry.

MolProbity and EDS failed to run properly - the sequence quality summary graphics cannot be shown.

2 Entry composition [i](#)

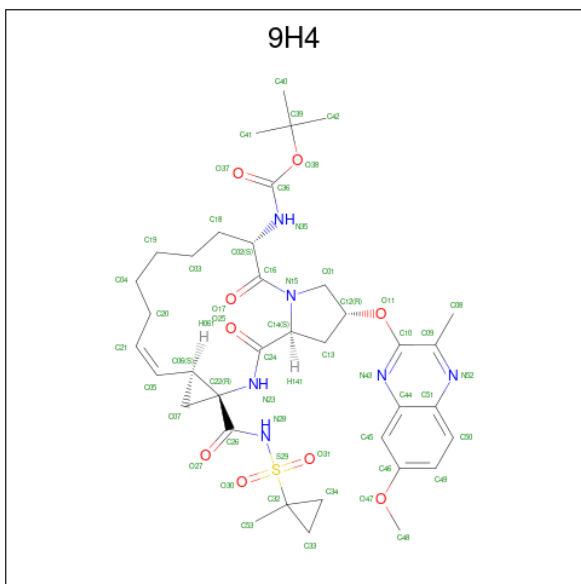
There are 7 unique types of molecules in this entry. The entry contains 3285 atoms, of which 1535 are hydrogens and 0 are deuteriums.

In the tables below, the ZeroOcc column contains the number of atoms modelled with zero occupancy, the AltConf column contains the number of residues with at least one atom in alternate conformation and the Trace column contains the number of residues modelled with at most 2 atoms.

- Molecule 1 is a protein called NS3 protease.

Mol	Chain	Residues	Atoms					ZeroOcc	AltConf	Trace	
			Total	C	H	N	O				S
1	A	197	2900	905	1445	263	279	8	0	5	0

- Molecule 2 is tert-butyl [(2R,6S,12Z,13aS,14aR,16aS)-2-[(7-methoxy-3-methylquinoxalin-2-yl)oxy]-14a-[[[(1-methylcyclopropyl)sulfonyl]carbamoyl]-5,16-dioxo-1,2,3,5,6,7,8,9,10,11,13a,14,14a,15,16,16a-hexadecahydrocyclopropa[e]pyrrolo[1,2-a][1,4]diazacyclopentadecin-6-yl]carbamate (three-letter code: 9H4) (formula: C₃₇H₅₀N₆O₉S) (labeled as "Ligand of Interest" by depositor).

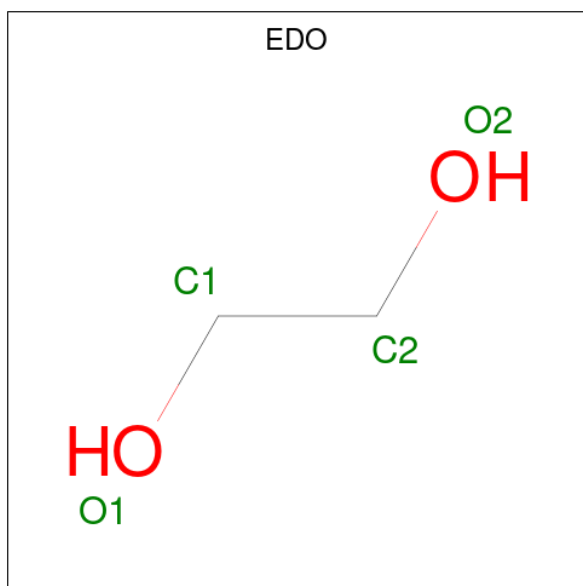


Mol	Chain	Residues	Atoms					ZeroOcc	AltConf	
			Total	C	H	N	O			S
2	A	1	103	37	50	6	9	1	0	0

- Molecule 3 is ZINC ION (three-letter code: ZN) (formula: Zn).

Mol	Chain	Residues	Atoms		ZeroOcc	AltConf
3	A	1	Total	Zn	0	0
			1	1		

- Molecule 4 is 1,2-ETHANEDIOL (three-letter code: EDO) (formula: $C_2H_6O_2$).



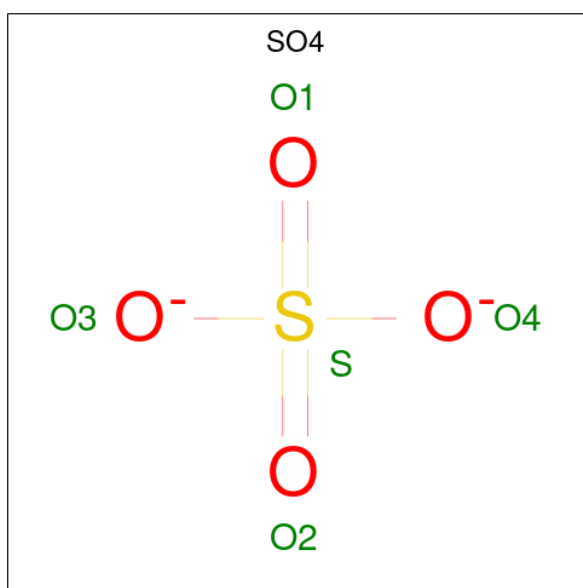
Mol	Chain	Residues	Atoms				ZeroOcc	AltConf
			Total	C	H	O		
4	A	1	10	2	6	2	0	0
4	A	1	10	2	6	2	0	0
4	A	1	10	2	6	2	0	0
4	A	1	10	2	6	2	0	0

- Molecule 5 is GLYCEROL (three-letter code: GOL) (formula: $C_3H_8O_3$).



Mol	Chain	Residues	Atoms			ZeroOcc	AltConf	
			Total	C	H			O
5	A	1	14	3	8	3	0	0
5	A	1	14	3	8	3	0	0

- Molecule 6 is SULFATE ION (three-letter code: SO4) (formula: O₄S).



Mol	Chain	Residues	Atoms		ZeroOcc	AltConf
			Total	O S		
6	A	1	5	4 1	0	0
6	A	1	5	4 1	0	0

- Molecule 7 is water.

Mol	Chain	Residues	Atoms		ZeroOcc	AltConf
7	A	203	Total 203	O 203	0	0

MolProbity and EDS failed to run properly - this section is therefore empty.

3 Data and refinement statistics i

EDS failed to run properly - this section is therefore incomplete.

Property	Value	Source
Space group	P 21 21 21	Depositor
Cell constants a, b, c, α , β , γ	55.62Å 58.51Å 59.94Å 90.00° 90.00° 90.00°	Depositor
Resolution (Å)	26.29 – 1.56	Depositor
% Data completeness (in resolution range)	98.3 (26.29-1.56)	Depositor
R_{merge}	(Not available)	Depositor
R_{sym}	0.05	Depositor
$\langle I/\sigma(I) \rangle$ ¹	4.19 (at 1.56Å)	Xtrriage
Refinement program	PHENIX 1.15.2_3472	Depositor
R, R_{free}	0.155 , 0.181	Depositor
Wilson B-factor (Å ²)	11.3	Xtrriage
Anisotropy	0.177	Xtrriage
L-test for twinning ²	$\langle L \rangle = 0.50$, $\langle L^2 \rangle = 0.34$	Xtrriage
Estimated twinning fraction	0.014 for -h,l,k	Xtrriage
Total number of atoms	3285	wwPDB-VP
Average B, all atoms (Å ²)	15.0	wwPDB-VP

Xtrriage's analysis on translational NCS is as follows: *The largest off-origin peak in the Patterson function is 6.66% of the height of the origin peak. No significant pseudotranslation is detected.*

¹ Intensities estimated from amplitudes.

² Theoretical values of $\langle |L| \rangle$, $\langle L^2 \rangle$ for acentric reflections are 0.5, 0.333 respectively for untwinned datasets, and 0.375, 0.2 for perfectly twinned datasets.

4 Model quality [i](#)

4.1 Standard geometry [i](#)

MolProbity failed to run properly - this section is therefore empty.

4.2 Too-close contacts [i](#)

MolProbity failed to run properly - this section is therefore empty.

4.3 Torsion angles [i](#)

4.3.1 Protein backbone [i](#)

MolProbity failed to run properly - this section is therefore empty.

4.3.2 Protein sidechains [i](#)

MolProbity failed to run properly - this section is therefore empty.

4.3.3 RNA [i](#)

MolProbity failed to run properly - this section is therefore empty.

4.4 Non-standard residues in protein, DNA, RNA chains [i](#)

There are no non-standard protein/DNA/RNA residues in this entry.

4.5 Carbohydrates [i](#)

There are no monosaccharides in this entry.

4.6 Ligand geometry [i](#)

Of 10 ligands modelled in this entry, 1 is monoatomic - leaving 9 for Mogul analysis.

In the following table, the Counts columns list the number of bonds (or angles) for which Mogul statistics could be retrieved, the number of bonds (or angles) that are observed in the model and the number of bonds (or angles) that are defined in the Chemical Component Dictionary. The Link column lists molecule types, if any, to which the group is linked. The Z score for a bond

length (or angle) is the number of standard deviations the observed value is removed from the expected value. A bond length (or angle) with $|Z| > 2$ is considered an outlier worth inspection. RMSZ is the root-mean-square of all Z scores of the bond lengths (or angles).

Mol	Type	Chain	Res	Link	Bond lengths			Bond angles		
					Counts	RMSZ	# Z > 2	Counts	RMSZ	# Z > 2
5	GOL	A	1207	-	5,5,5	0.60	0	5,5,5	1.00	0
4	EDO	A	1206	-	3,3,3	0.47	0	2,2,2	0.36	0
4	EDO	A	1205	-	3,3,3	0.41	0	2,2,2	0.60	0
6	SO4	A	1209	-	4,4,4	0.17	0	6,6,6	0.35	0
2	9H4	A	1201	-	54,58,58	3.79	22 (40%)	76,89,89	2.25	23 (30%)
6	SO4	A	1210	-	4,4,4	0.16	0	6,6,6	0.45	0
4	EDO	A	1203	-	3,3,3	0.45	0	2,2,2	0.65	0
5	GOL	A	1208	-	5,5,5	1.70	2 (40%)	5,5,5	1.09	0
4	EDO	A	1204	-	3,3,3	0.47	0	2,2,2	0.40	0

In the following table, the Chirals column lists the number of chiral outliers, the number of chiral centers analysed, the number of these observed in the model and the number defined in the Chemical Component Dictionary. Similar counts are reported in the Torsion and Rings columns. '-' means no outliers of that kind were identified.

Mol	Type	Chain	Res	Link	Chirals	Torsions	Rings
5	GOL	A	1207	-	-	2/4/4/4	-
4	EDO	A	1206	-	-	0/1/1/1	-
4	EDO	A	1205	-	-	0/1/1/1	-
2	9H4	A	1201	-	-	3/53/86/86	0/5/6/6
4	EDO	A	1203	-	-	0/1/1/1	-
5	GOL	A	1208	-	-	2/4/4/4	-
4	EDO	A	1204	-	-	1/1/1/1	-

All (24) bond length outliers are listed below:

Mol	Chain	Res	Type	Atoms	Z	Observed(Å)	Ideal(Å)
2	A	1201	9H4	C01-C12	-11.44	1.33	1.52
2	A	1201	9H4	C01-N15	10.72	1.64	1.47
2	A	1201	9H4	C45-C46	7.87	1.51	1.37
2	A	1201	9H4	C09-N52	7.57	1.42	1.32
2	A	1201	9H4	C49-C46	6.59	1.51	1.38
2	A	1201	9H4	C50-C49	6.44	1.50	1.36
2	A	1201	9H4	C45-C44	6.04	1.51	1.41
2	A	1201	9H4	C50-C51	5.92	1.52	1.41
2	A	1201	9H4	C16-N15	5.28	1.46	1.34
2	A	1201	9H4	C24-N23	5.19	1.45	1.34

Continued on next page...

Continued from previous page...

Mol	Chain	Res	Type	Atoms	Z	Observed(Å)	Ideal(Å)
2	A	1201	9H4	C10-N43	4.71	1.42	1.30
2	A	1201	9H4	C36-N35	4.47	1.45	1.34
2	A	1201	9H4	C51-N52	4.10	1.44	1.37
2	A	1201	9H4	C06-C05	3.82	1.54	1.49
2	A	1201	9H4	C44-N43	3.81	1.43	1.37
2	A	1201	9H4	C51-C44	3.80	1.50	1.42
2	A	1201	9H4	O38-C39	-3.78	1.41	1.48
2	A	1201	9H4	C14-N15	-3.42	1.40	1.47
2	A	1201	9H4	C32-S29	-3.34	1.78	1.81
2	A	1201	9H4	S29-N28	3.17	1.65	1.60
2	A	1201	9H4	O38-C36	2.71	1.40	1.34
5	A	1208	GOL	O3-C3	-2.62	1.31	1.42
5	A	1208	GOL	O2-C2	-2.14	1.37	1.43
2	A	1201	9H4	O30-S29	2.05	1.47	1.43

All (23) bond angle outliers are listed below:

Mol	Chain	Res	Type	Atoms	Z	Observed(°)	Ideal(°)
2	A	1201	9H4	C26-N28-S29	-7.73	111.58	124.08
2	A	1201	9H4	C26-C22-N23	5.45	121.92	116.06
2	A	1201	9H4	O31-S29-O30	-5.21	109.99	120.57
2	A	1201	9H4	C09-N52-C51	-4.62	113.89	118.38
2	A	1201	9H4	C46-C45-C44	-4.22	114.84	119.27
2	A	1201	9H4	C50-C51-N52	-3.78	112.94	118.69
2	A	1201	9H4	O27-C26-C22	3.55	124.97	120.74
2	A	1201	9H4	C07-C22-N23	-3.54	113.05	117.80
2	A	1201	9H4	C49-C50-C51	-3.47	116.47	120.84
2	A	1201	9H4	O31-S29-N28	3.44	115.62	109.38
2	A	1201	9H4	C24-C14-N15	-3.31	103.44	112.56
2	A	1201	9H4	C07-C06-C05	3.27	128.30	120.03
2	A	1201	9H4	C08-C09-N52	3.22	121.79	116.97
2	A	1201	9H4	O31-S29-C32	3.07	110.06	107.60
2	A	1201	9H4	C44-C51-N52	2.92	124.99	121.18
2	A	1201	9H4	O30-S29-C32	-2.89	105.28	107.60
2	A	1201	9H4	C22-C26-N28	-2.75	110.94	115.70
2	A	1201	9H4	C45-C44-C51	2.69	122.43	119.51
2	A	1201	9H4	O17-C16-N15	-2.67	116.63	121.38
2	A	1201	9H4	C01-N15-C14	-2.61	107.93	111.70
2	A	1201	9H4	C50-C51-C44	2.26	122.06	119.25
2	A	1201	9H4	C49-C46-C45	2.08	123.61	120.81
2	A	1201	9H4	C13-C14-C24	2.07	115.46	111.32

There are no chirality outliers.

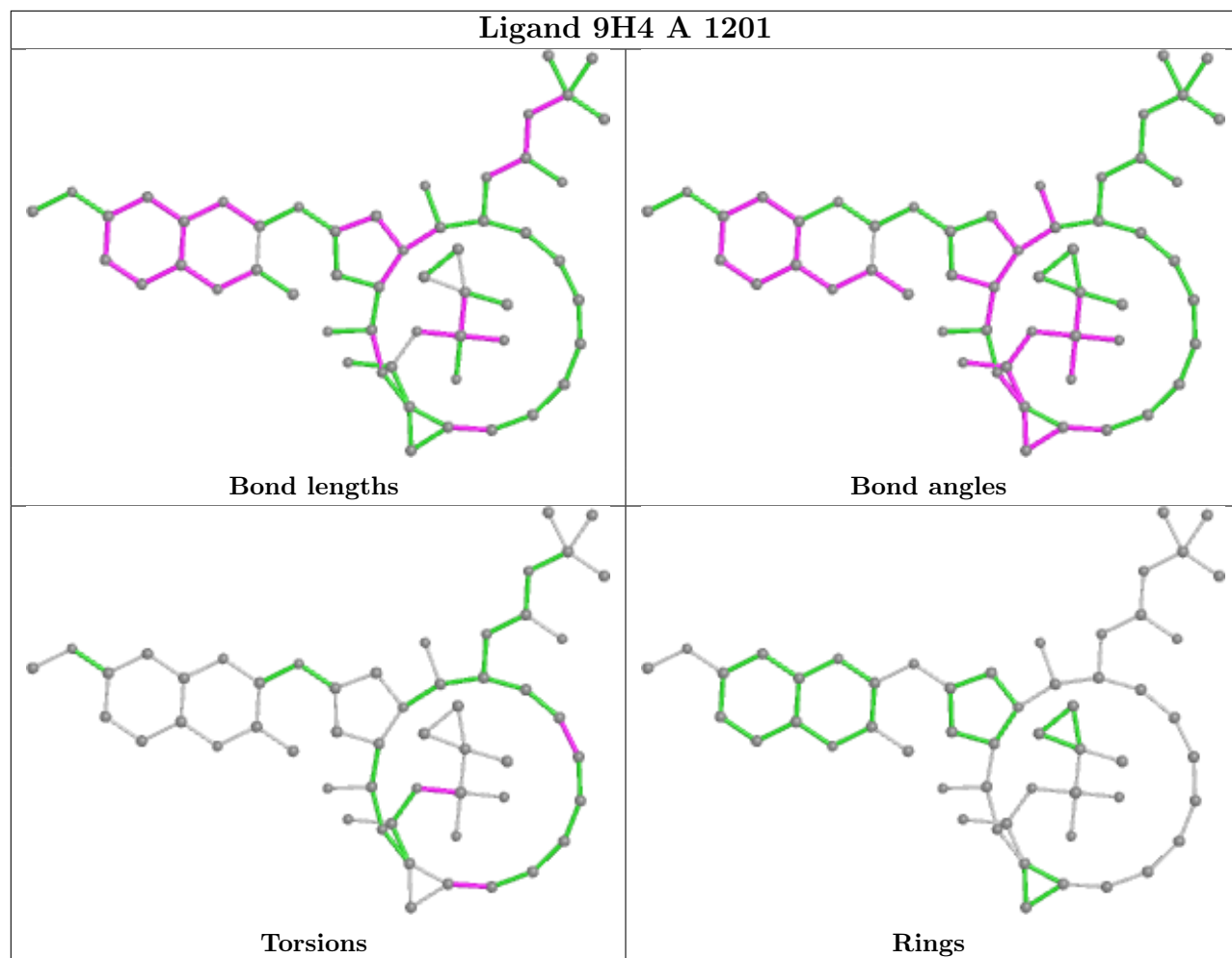
All (8) torsion outliers are listed below:

Mol	Chain	Res	Type	Atoms
2	A	1201	9H4	C26-N28-S29-C32
5	A	1207	GOL	O1-C1-C2-C3
2	A	1201	9H4	C18-C03-C19-C04
5	A	1208	GOL	C1-C2-C3-O3
4	A	1204	EDO	O1-C1-C2-O2
5	A	1208	GOL	O2-C2-C3-O3
5	A	1207	GOL	O1-C1-C2-O2
2	A	1201	9H4	C21-C05-C06-C22

There are no ring outliers.

No monomer is involved in short contacts.

The following is a two-dimensional graphical depiction of Mogul quality analysis of bond lengths, bond angles, torsion angles, and ring geometry for all instances of the Ligand of Interest. In addition, ligands with molecular weight > 250 and outliers as shown on the validation Tables will also be included. For torsion angles, if less than 5% of the Mogul distribution of torsion angles is within 10 degrees of the torsion angle in question, then that torsion angle is considered an outlier. Any bond that is central to one or more torsion angles identified as an outlier by Mogul will be highlighted in the graph. For rings, the root-mean-square deviation (RMSD) between the ring in question and similar rings identified by Mogul is calculated over all ring torsion angles. If the average RMSD is greater than 60 degrees and the minimal RMSD between the ring in question and any Mogul-identified rings is also greater than 60 degrees, then that ring is considered an outlier. The outliers are highlighted in purple. The color gray indicates Mogul did not find sufficient equivalents in the CSD to analyse the geometry.



4.7 Other polymers [i](#)

There are no such residues in this entry.

4.8 Polymer linkage issues [i](#)

There are no chain breaks in this entry.

5 Fit of model and data

5.1 Protein, DNA and RNA chains

EDS failed to run properly - this section is therefore empty.

5.2 Non-standard residues in protein, DNA, RNA chains

EDS failed to run properly - this section is therefore empty.

5.3 Carbohydrates

EDS failed to run properly - this section is therefore empty.

5.4 Ligands

EDS failed to run properly - this section is therefore empty.

5.5 Other polymers

EDS failed to run properly - this section is therefore empty.