



# Full wwPDB X-ray Structure Validation Report ⓘ

Oct 5, 2023 – 08:27 AM EDT

PDB ID : 6UOB  
Title : Crystal structure of Danio rerio histone deacetylase 6 catalytic domain 1 (CD1)  
K330L mutant complexed with Resminostat  
Authors : Osko, J.D.; Christianson, D.W.  
Deposited on : 2019-10-14  
Resolution : 1.58 Å(reported)

This is a Full wwPDB X-ray Structure Validation Report for a publicly released PDB entry.

We welcome your comments at [validation@mail.wwpdb.org](mailto:validation@mail.wwpdb.org)

A user guide is available at

<https://www.wwpdb.org/validation/2017/XrayValidationReportHelp>

with specific help available everywhere you see the ⓘ symbol.

The types of validation reports are described at

<http://www.wwpdb.org/validation/2017/FAQs#types>.

---

The following versions of software and data (see [references ⓘ](#)) were used in the production of this report:

MolProbity : **FAILED**  
Mogul : 1.8.5 (274361), CSD as541be (2020)  
Xtrriage (Phenix) : 1.13  
EDS : **FAILED**  
buster-report : 1.1.7 (2018)  
Percentile statistics : 20191225.v01 (using entries in the PDB archive December 25th 2019)  
Ideal geometry (proteins) : Engh & Huber (2001)  
Ideal geometry (DNA, RNA) : Parkinson et al. (1996)  
Validation Pipeline (wwPDB-VP) : 2.35.1

## 1 Overall quality at a glance

The following experimental techniques were used to determine the structure:

*X-RAY DIFFRACTION*

The reported resolution of this entry is 1.58 Å.

There are no overall percentile quality scores available for this entry.

MolProbity and EDS failed to run properly - the sequence quality summary graphics cannot be shown.

## 2 Entry composition

There are 7 unique types of molecules in this entry. The entry contains 6247 atoms, of which 57 are hydrogens and 0 are deuteriums.

In the tables below, the ZeroOcc column contains the number of atoms modelled with zero occupancy, the AltConf column contains the number of residues with at least one atom in alternate conformation and the Trace column contains the number of residues modelled with at most 2 atoms.

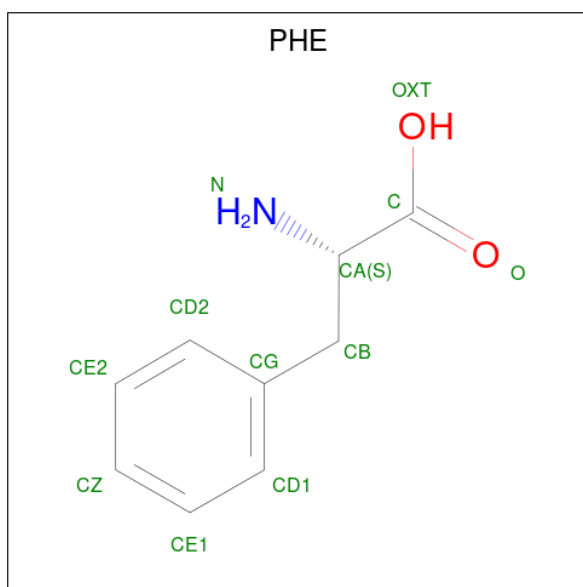
- Molecule 1 is a protein called Histone deacetylase 6.

Mol	Chain	Residues	Atoms					ZeroOcc	AltConf	Trace
			Total	C	N	O	S			
1	A	358	2813	1783	476	534	20	0	12	0
1	B	357	2779	1763	466	530	20	0	6	0

There are 14 discrepancies between the modelled and reference sequences:

Chain	Residue	Modelled	Actual	Comment	Reference
A	54	SER	-	expression tag	UNP F8W4B7
A	55	ASN	-	expression tag	UNP F8W4B7
A	56	ALA	-	expression tag	UNP F8W4B7
A	57	GLY	-	expression tag	UNP F8W4B7
A	58	GLY	-	expression tag	UNP F8W4B7
A	59	SER	-	expression tag	UNP F8W4B7
A	330	LEU	LYS	engineered mutation	UNP F8W4B7
B	54	SER	-	expression tag	UNP F8W4B7
B	55	ASN	-	expression tag	UNP F8W4B7
B	56	ALA	-	expression tag	UNP F8W4B7
B	57	GLY	-	expression tag	UNP F8W4B7
B	58	GLY	-	expression tag	UNP F8W4B7
B	59	SER	-	expression tag	UNP F8W4B7
B	330	LEU	LYS	engineered mutation	UNP F8W4B7

- Molecule 2 is PHENYLALANINE (three-letter code: PHE) (formula: C<sub>9</sub>H<sub>11</sub>NO<sub>2</sub>).



Mol	Chain	Residues	Atoms				ZeroOcc	AltConf
2	A	1	Total	C	N	O	0	0
			11	9	1	1		

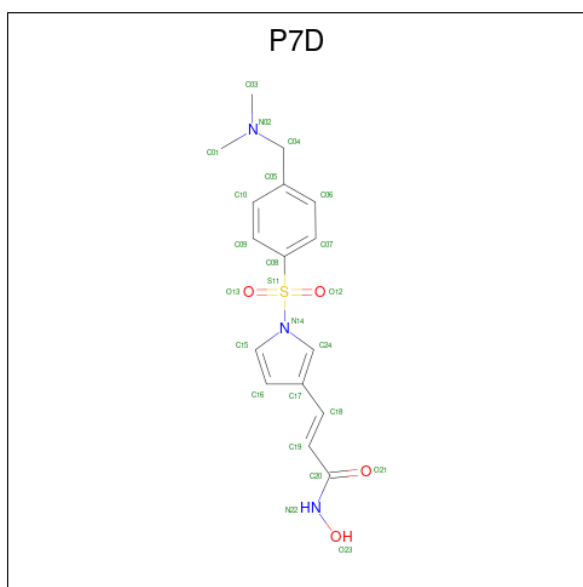
- Molecule 3 is ZINC ION (three-letter code: ZN) (formula: Zn).

Mol	Chain	Residues	Atoms		ZeroOcc	AltConf
3	A	1	Total	Zn	0	0
			1	1		
3	B	1	Total	Zn	0	0
			1	1		

- Molecule 4 is POTASSIUM ION (three-letter code: K) (formula: K).

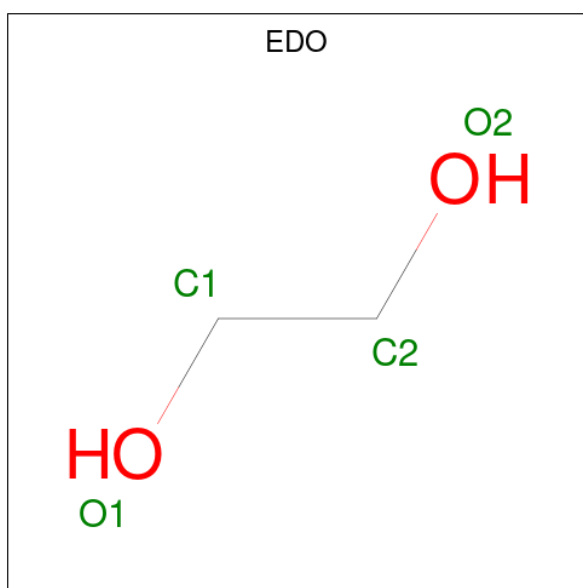
Mol	Chain	Residues	Atoms		ZeroOcc	AltConf
4	A	2	Total	K	0	0
			2	2		
4	B	2	Total	K	0	0
			2	2		

- Molecule 5 is Resminostat (three-letter code: P7D) (formula: C<sub>16</sub>H<sub>19</sub>N<sub>3</sub>O<sub>4</sub>S) (labeled as "Ligand of Interest" by depositor).



Mol	Chain	Residues	Atoms					ZeroOcc	AltConf		
			Total	C	H	N	O			S	
5	A	1	Total	86	32	38	6	8	2	0	1
5	B	1	Total	43	16	19	3	4	1	0	0

- Molecule 6 is 1,2-ETHANEDIOL (three-letter code: EDO) (formula: C<sub>2</sub>H<sub>6</sub>O<sub>2</sub>).



Mol	Chain	Residues	Atoms		ZeroOcc	AltConf
			Total	C O		
6	A	1	Total	4 2 2	0	0
6	B	1	Total	4 2 2	0	0

*Continued on next page...*

*Continued from previous page...*

Mol	Chain	Residues	Atoms			ZeroOcc	AltConf
6	B	1	Total	C	O	0	0
			4	2	2		

- Molecule 7 is water.

Mol	Chain	Residues	Atoms		ZeroOcc	AltConf
7	A	264	Total	O	0	0
			264	264		
7	B	233	Total	O	0	0
			233	233		

MolProbity and EDS failed to run properly - this section is therefore empty.

### 3 Data and refinement statistics

EDS failed to run properly - this section is therefore incomplete.

Property	Value	Source
Space group	P 21 21 21	Depositor
Cell constants a, b, c, $\alpha$ , $\beta$ , $\gamma$	67.27Å 102.62Å 112.90Å 90.00° 90.00° 90.00°	Depositor
Resolution (Å)	56.45 – 1.58	Depositor
% Data completeness (in resolution range)	99.4 (56.45-1.58)	Depositor
$R_{merge}$	0.14	Depositor
$R_{sym}$	(Not available)	Depositor
$\langle I/\sigma(I) \rangle$ <sup>1</sup>	1.89 (at 1.58Å)	Xtrriage
Refinement program	PHENIX 1.11.1_2575, PHENIX 1.11.1_2575	Depositor
R, $R_{free}$	0.184 , 0.208	Depositor
Wilson B-factor (Å <sup>2</sup> )	16.3	Xtrriage
Anisotropy	0.523	Xtrriage
L-test for twinning <sup>2</sup>	$\langle  L  \rangle = 0.49$ , $\langle L^2 \rangle = 0.32$	Xtrriage
Estimated twinning fraction	No twinning to report.	Xtrriage
Total number of atoms	6247	wwPDB-VP
Average B, all atoms (Å <sup>2</sup> )	20.0	wwPDB-VP

Xtrriage's analysis on translational NCS is as follows: *The largest off-origin peak in the Patterson function is 5.28% of the height of the origin peak. No significant pseudotranslation is detected.*

<sup>1</sup> Intensities estimated from amplitudes.

<sup>2</sup> Theoretical values of  $\langle |L| \rangle$ ,  $\langle L^2 \rangle$  for acentric reflections are 0.5, 0.333 respectively for untwinned datasets, and 0.375, 0.2 for perfectly twinned datasets.

## 4 Model quality [i](#)

### 4.1 Standard geometry [i](#)

MolProbity failed to run properly - this section is therefore empty.

### 4.2 Too-close contacts [i](#)

MolProbity failed to run properly - this section is therefore empty.

### 4.3 Torsion angles [i](#)

#### 4.3.1 Protein backbone [i](#)

MolProbity failed to run properly - this section is therefore empty.

#### 4.3.2 Protein sidechains [i](#)

MolProbity failed to run properly - this section is therefore empty.

#### 4.3.3 RNA [i](#)

MolProbity failed to run properly - this section is therefore empty.

### 4.4 Non-standard residues in protein, DNA, RNA chains [i](#)

There are no non-standard protein/DNA/RNA residues in this entry.

### 4.5 Carbohydrates [i](#)

There are no monosaccharides in this entry.

### 4.6 Ligand geometry [i](#)

Of 13 ligands modelled in this entry, 6 are monoatomic - leaving 7 for Mogul analysis.

In the following table, the Counts columns list the number of bonds (or angles) for which Mogul statistics could be retrieved, the number of bonds (or angles) that are observed in the model and the number of bonds (or angles) that are defined in the Chemical Component Dictionary. The Link column lists molecule types, if any, to which the group is linked. The Z score for a bond



length (or angle) is the number of standard deviations the observed value is removed from the expected value. A bond length (or angle) with  $|Z| > 2$  is considered an outlier worth inspection. RMSZ is the root-mean-square of all Z scores of the bond lengths (or angles).

Mol	Type	Chain	Res	Link	Bond lengths			Bond angles		
					Counts	RMSZ	# Z  > 2	Counts	RMSZ	# Z  > 2
6	EDO	B	506	-	3,3,3	0.39	0	2,2,2	0.42	0
5	P7D	A	505[B]	3	24,25,25	1.83	7 (29%)	27,35,35	3.05	10 (37%)
5	P7D	A	505[A]	3	24,25,25	1.49	3 (12%)	27,35,35	3.38	9 (33%)
6	EDO	B	505	-	3,3,3	0.34	0	2,2,2	0.45	0
2	PHE	A	501	-	10,11,12	0.59	0	10,13,15	0.27	0
6	EDO	A	506	-	3,3,3	0.49	0	2,2,2	0.35	0
5	P7D	B	504	3	24,25,25	1.57	6 (25%)	27,35,35	3.20	11 (40%)

In the following table, the Chirals column lists the number of chiral outliers, the number of chiral centers analysed, the number of these observed in the model and the number defined in the Chemical Component Dictionary. Similar counts are reported in the Torsion and Rings columns. '-' means no outliers of that kind were identified.

Mol	Type	Chain	Res	Link	Chirals	Torsions	Rings
6	EDO	B	506	-	-	1/1/1/1	-
5	P7D	A	505[B]	3	-	4/17/23/23	0/2/2/2
5	P7D	A	505[A]	3	-	4/17/23/23	0/2/2/2
6	EDO	B	505	-	-	1/1/1/1	-
2	PHE	A	501	-	-	0/5/6/8	0/1/1/1
6	EDO	A	506	-	-	0/1/1/1	-
5	P7D	B	504	3	-	2/17/23/23	0/2/2/2

All (16) bond length outliers are listed below:

Mol	Chain	Res	Type	Atoms	Z	Observed(Å)	Ideal(Å)
5	A	505[B]	P7D	C20-N22	4.26	1.40	1.33
5	A	505[A]	P7D	C20-N22	3.74	1.39	1.33
5	A	505[B]	P7D	C04-N02	3.44	1.56	1.46
5	B	504	P7D	C20-N22	3.38	1.39	1.33
5	B	504	P7D	C04-N02	2.78	1.54	1.46
5	A	505[B]	P7D	C15-N14	2.72	1.44	1.38
5	A	505[B]	P7D	C24-N14	2.66	1.44	1.38
5	A	505[A]	P7D	C15-N14	2.43	1.43	1.38
5	B	504	P7D	C15-N14	2.26	1.43	1.38
5	A	505[B]	P7D	C04-C05	2.20	1.55	1.51
5	B	504	P7D	C19-C20	-2.19	1.43	1.48
5	B	504	P7D	C03-N02	2.19	1.52	1.46

*Continued on next page...*

Continued from previous page...

Mol	Chain	Res	Type	Atoms	Z	Observed(Å)	Ideal(Å)
5	A	505[A]	P7D	C24-N14	2.18	1.43	1.38
5	B	504	P7D	O12-S11	-2.09	1.41	1.43
5	A	505[B]	P7D	C01-N02	2.08	1.52	1.46
5	A	505[B]	P7D	C09-C10	2.00	1.42	1.38

All (30) bond angle outliers are listed below:

Mol	Chain	Res	Type	Atoms	Z	Observed(°)	Ideal(°)
5	A	505[A]	P7D	C08-S11-N14	-9.04	93.39	104.52
5	A	505[A]	P7D	O21-C20-N22	-7.07	109.81	122.89
5	B	504	P7D	O21-C20-N22	-7.07	109.81	122.89
5	A	505[B]	P7D	O21-C20-N22	-7.07	109.82	122.89
5	B	504	P7D	C08-S11-N14	-6.79	96.16	104.52
5	A	505[B]	P7D	C09-C08-C07	-6.44	111.46	120.44
5	A	505[A]	P7D	C19-C20-N22	6.26	126.84	114.38
5	A	505[B]	P7D	C19-C20-N22	6.22	126.76	114.38
5	A	505[A]	P7D	C09-C08-C07	-5.92	112.19	120.44
5	B	504	P7D	C09-C08-C07	-5.72	112.45	120.44
5	B	504	P7D	C19-C20-N22	5.65	125.63	114.38
5	A	505[B]	P7D	C09-C08-S11	5.51	125.89	119.77
5	A	505[A]	P7D	C10-C09-C08	5.41	125.04	119.45
5	A	505[B]	P7D	C06-C07-C08	5.29	124.93	119.45
5	A	505[B]	P7D	C10-C09-C08	5.07	124.69	119.45
5	A	505[A]	P7D	C07-C08-S11	5.01	125.33	119.77
5	B	504	P7D	C10-C09-C08	4.95	124.57	119.45
5	B	504	P7D	C06-C07-C08	4.81	124.43	119.45
5	B	504	P7D	C09-C08-S11	4.80	125.10	119.77
5	A	505[A]	P7D	C06-C07-C08	4.24	123.84	119.45
5	B	504	P7D	C18-C19-C20	-3.43	114.85	121.56
5	A	505[A]	P7D	O12-S11-C08	2.64	113.59	107.62
5	A	505[B]	P7D	C07-C08-S11	2.58	122.63	119.77
5	A	505[B]	P7D	C06-C05-C10	-2.34	114.48	118.17
5	B	504	P7D	C07-C08-S11	2.32	122.35	119.77
5	B	504	P7D	C17-C18-C19	2.23	132.00	126.91
5	A	505[A]	P7D	C09-C08-S11	2.22	122.23	119.77
5	B	504	P7D	C06-C05-C10	-2.17	114.75	118.17
5	A	505[B]	P7D	C01-N02-C04	2.05	114.92	110.69
5	A	505[B]	P7D	O12-S11-C08	2.02	112.17	107.62

There are no chirality outliers.

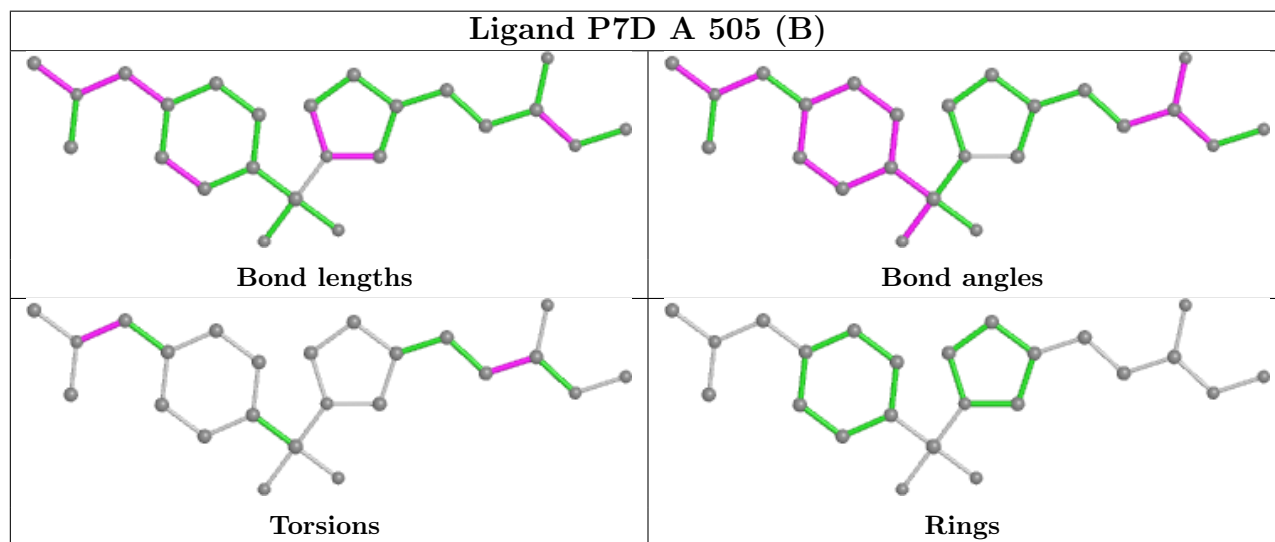
All (12) torsion outliers are listed below:

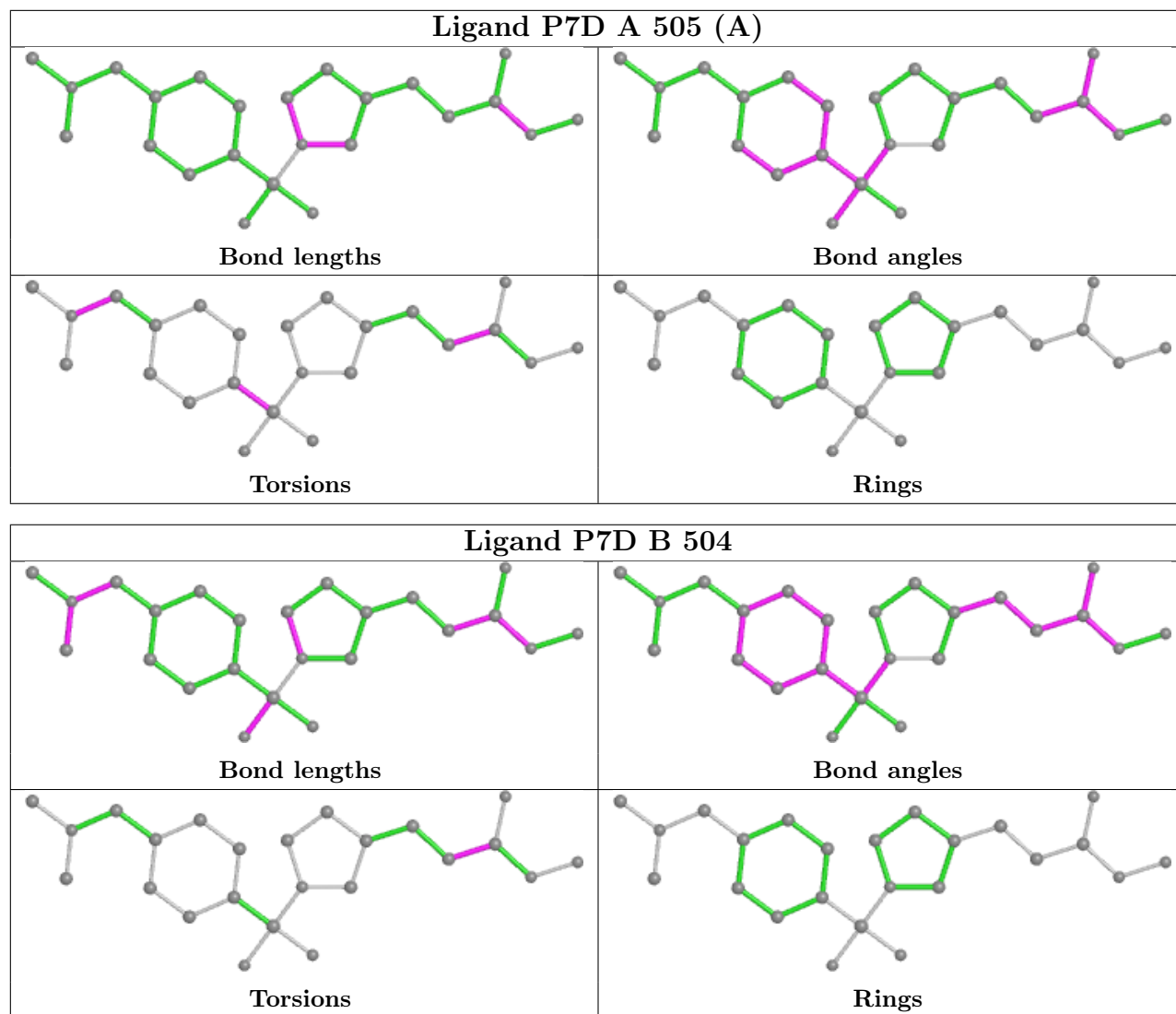
Mol	Chain	Res	Type	Atoms
5	A	505[A]	P7D	C18-C19-C20-N22
5	A	505[B]	P7D	C18-C19-C20-N22
5	A	505[B]	P7D	C05-C04-N02-C01
5	B	504	P7D	C18-C19-C20-N22
5	A	505[A]	P7D	C18-C19-C20-O21
5	A	505[B]	P7D	C18-C19-C20-O21
5	B	504	P7D	C18-C19-C20-O21
6	B	505	EDO	O1-C1-C2-O2
5	A	505[A]	P7D	C05-C04-N02-C03
6	B	506	EDO	O1-C1-C2-O2
5	A	505[B]	P7D	C05-C04-N02-C03
5	A	505[A]	P7D	C09-C08-S11-O12

There are no ring outliers.

No monomer is involved in short contacts.

The following is a two-dimensional graphical depiction of Mogul quality analysis of bond lengths, bond angles, torsion angles, and ring geometry for all instances of the Ligand of Interest. In addition, ligands with molecular weight > 250 and outliers as shown on the validation Tables will also be included. For torsion angles, if less than 5% of the Mogul distribution of torsion angles is within 10 degrees of the torsion angle in question, then that torsion angle is considered an outlier. Any bond that is central to one or more torsion angles identified as an outlier by Mogul will be highlighted in the graph. For rings, the root-mean-square deviation (RMSD) between the ring in question and similar rings identified by Mogul is calculated over all ring torsion angles. If the average RMSD is greater than 60 degrees and the minimal RMSD between the ring in question and any Mogul-identified rings is also greater than 60 degrees, then that ring is considered an outlier. The outliers are highlighted in purple. The color gray indicates Mogul did not find sufficient equivalents in the CSD to analyse the geometry.





#### 4.7 Other polymers [\(i\)](#)

There are no such residues in this entry.

#### 4.8 Polymer linkage issues [\(i\)](#)

There are no chain breaks in this entry.

## 5 Fit of model and data

### 5.1 Protein, DNA and RNA chains

EDS failed to run properly - this section is therefore empty.

### 5.2 Non-standard residues in protein, DNA, RNA chains

EDS failed to run properly - this section is therefore empty.

### 5.3 Carbohydrates

EDS failed to run properly - this section is therefore empty.

### 5.4 Ligands

EDS failed to run properly - this section is therefore empty.

### 5.5 Other polymers

EDS failed to run properly - this section is therefore empty.