



Full wwPDB X-ray Structure Validation Report ⓘ

May 17, 2020 – 09:50 pm BST

PDB ID : 5URK
Title : Crystal structure of human BRR2 in complex with T-3935799
Authors : Qin, L.; Tjhen, R.; Klein, M.G.
Deposited on : 2017-02-10
Resolution : 2.95 Å(reported)

This is a Full wwPDB X-ray Structure Validation Report for a publicly released PDB entry.

We welcome your comments at validation@mail.wwpdb.org

A user guide is available at

<https://www.wwpdb.org/validation/2017/XrayValidationReportHelp>

with specific help available everywhere you see the ⓘ symbol.

The following versions of software and data (see [references ⓘ](#)) were used in the production of this report:

MolProbity : 4.02b-467
Mogul : 1.8.5 (274361), CSD as541be (2020)
Xtriage (Phenix) : 1.13
EDS : 2.11
buster-report : 1.1.7 (2018)
Percentile statistics : 20191225.v01 (using entries in the PDB archive December 25th 2019)
Refmac : 5.8.0158
CCP4 : 7.0.044 (Gargrove)
Ideal geometry (proteins) : Engh & Huber (2001)
Ideal geometry (DNA, RNA) : Parkinson et al. (1996)
Validation Pipeline (wwPDB-VP) : 2.11

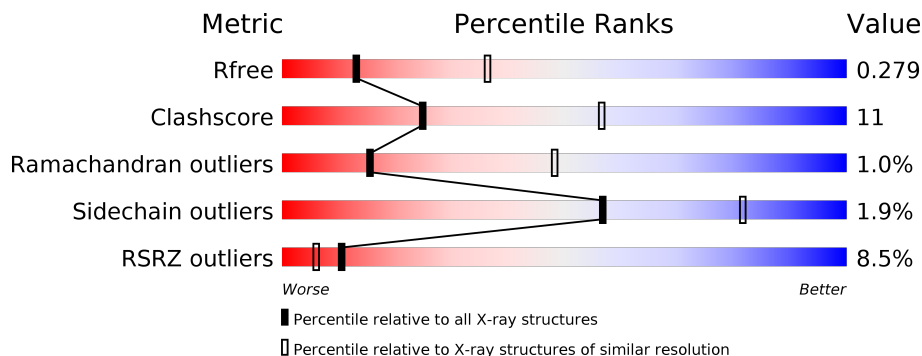
1 Overall quality at a glance

The following experimental techniques were used to determine the structure:

X-RAY DIFFRACTION

The reported resolution of this entry is 2.95 Å.

Percentile scores (ranging between 0-100) for global validation metrics of the entry are shown in the following graphic. The table shows the number of entries on which the scores are based.



Metric	Whole archive (#Entries)	Similar resolution (#Entries, resolution range(Å))
R_{free}	130704	3104 (3.00-2.92)
Clashscore	141614	3462 (3.00-2.92)
Ramachandran outliers	138981	3340 (3.00-2.92)
Sidechain outliers	138945	3343 (3.00-2.92)
RSRZ outliers	127900	2986 (3.00-2.92)

The table below summarises the geometric issues observed across the polymeric chains and their fit to the electron density. The red, orange, yellow and green segments on the lower bar indicate the fraction of residues that contain outliers for ≥ 3 , 2, 1 and 0 types of geometric quality criteria respectively. A grey segment represents the fraction of residues that are not modelled. The numeric value for each fraction is indicated below the corresponding segment, with a dot representing fractions $\leq 5\%$. The upper red bar (where present) indicates the fraction of residues that have poor fit to the electron density. The numeric value is given above the bar.

Mol	Chain	Length	Quality of chain
1	A	1738	

2 Entry composition [i](#)

There are 3 unique types of molecules in this entry. The entry contains 13657 atoms, of which 0 are hydrogens and 0 are deuteriums.

In the tables below, the ZeroOcc column contains the number of atoms modelled with zero occupancy, the AltConf column contains the number of residues with at least one atom in alternate conformation and the Trace column contains the number of residues modelled with at most 2 atoms.

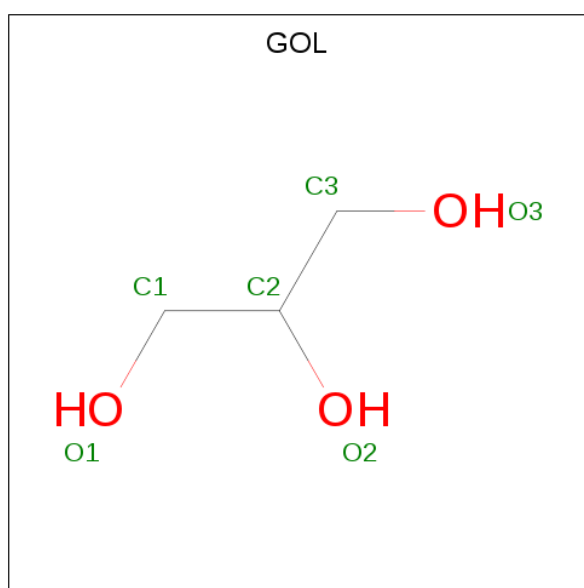
- Molecule 1 is a protein called U5 small nuclear ribonucleoprotein 200 kDa helicase.

Mol	Chain	Residues	Atoms					ZeroOcc	AltConf	Trace
			Total	C	N	O	S			
1	A	1706	13618	8710	2320	2520	68	0	0	0

There are 3 discrepancies between the modelled and reference sequences:

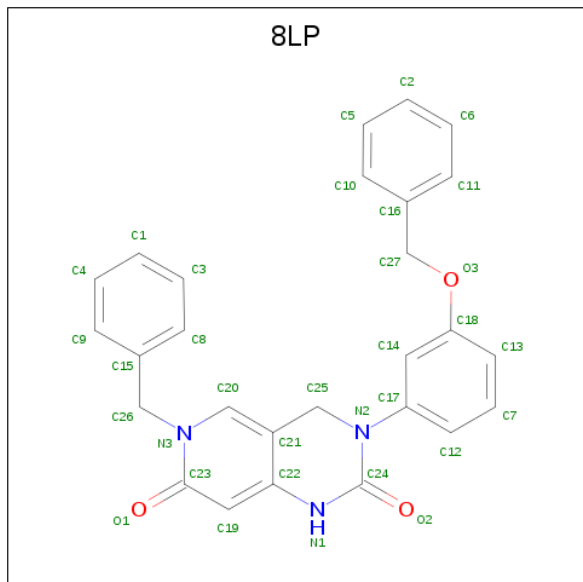
Chain	Residue	Modelled	Actual	Comment	Reference
A	392	GLY	-	expression tag	UNP O75643
A	393	GLY	-	expression tag	UNP O75643
A	394	SER	-	expression tag	UNP O75643

- Molecule 2 is GLYCEROL (three-letter code: GOL) (formula: C₃H₈O₃).



Mol	Chain	Residues	Atoms			ZeroOcc	AltConf
			Total	C	O		
2	A	1	6	3	3	0	0

- Molecule 3 is 6-benzyl-3-[3-(benzyloxy)phenyl]-4,6-dihydropyrido[4,3-d]pyrimidine-2,7(1H,3H)-dione (three-letter code: 8LP) (formula: $C_{27}H_{23}N_3O_3$).

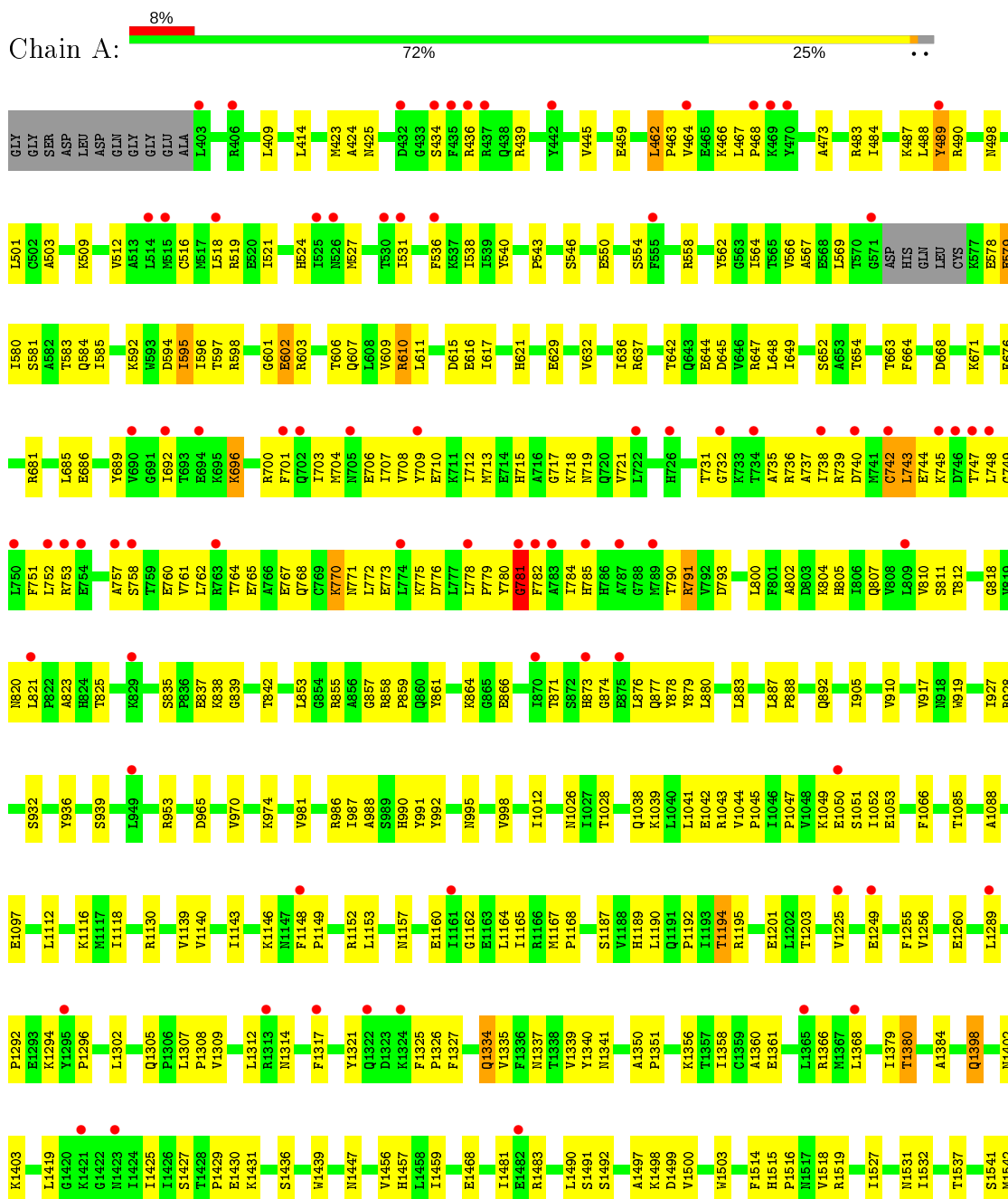


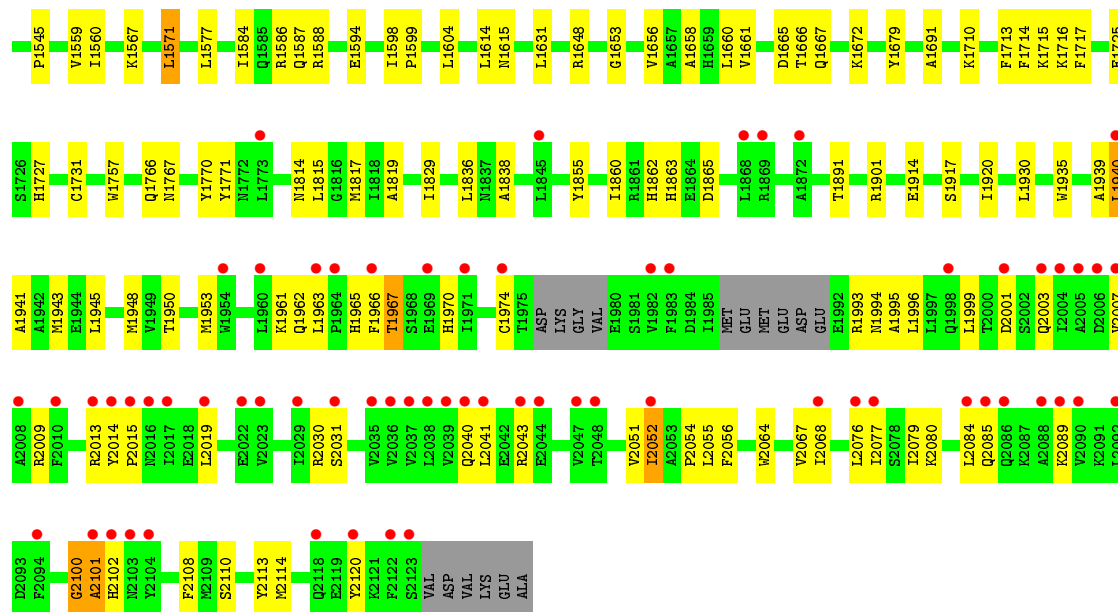
Mol	Chain	Residues	Atoms				ZeroOcc	AltConf
			Total	C	N	O		
3	A	1	33	27	3	3	0	0

3 Residue-property plots [i](#)

These plots are drawn for all protein, RNA and DNA chains in the entry. The first graphic for a chain summarises the proportions of the various outlier classes displayed in the second graphic. The second graphic shows the sequence view annotated by issues in geometry and electron density. Residues are color-coded according to the number of geometric quality criteria for which they contain at least one outlier: green = 0, yellow = 1, orange = 2 and red = 3 or more. A red dot above a residue indicates a poor fit to the electron density ($RSRZ > 2$). Stretches of 2 or more consecutive residues without any outlier are shown as a green connector. Residues present in the sample, but not in the model, are shown in grey.

- Molecule 1: U5 small nuclear ribonucleoprotein 200 kDa helicase





4 Data and refinement statistics

Property	Value	Source
Space group	C 1 2 1	Depositor
Cell constants a, b, c, α , β , γ	145.49Å 154.07Å 143.51Å 90.00° 120.74° 90.00°	Depositor
Resolution (Å)	48.67 – 2.95 48.67 – 2.95	Depositor EDS
% Data completeness (in resolution range)	99.7 (48.67-2.95) 99.7 (48.67-2.95)	Depositor EDS
R_{merge}	(Not available)	Depositor
R_{sym}	(Not available)	Depositor
$\langle I/\sigma(I) \rangle$ ¹	1.42 (at 2.96Å)	Xtrriage
Refinement program	PHENIX 1.9_1692, REFMAC	Depositor
R, R_{free}	0.233 , 0.277 0.236 , 0.279	Depositor DCC
R_{free} test set	2829 reflections (4.96%)	wwPDB-VP
Wilson B-factor (Å ²)	89.0	Xtrriage
Anisotropy	0.543	Xtrriage
Bulk solvent k_{sol} (e/Å ³), B_{sol} (Å ²)	0.30 , 64.6	EDS
L-test for twinning ²	$\langle L \rangle = 0.49$, $\langle L^2 \rangle = 0.33$	Xtrriage
Estimated twinning fraction	0.014 for h,-k,-h-l	Xtrriage
F_o, F_c correlation	0.94	EDS
Total number of atoms	13657	wwPDB-VP
Average B, all atoms (Å ²)	105.0	wwPDB-VP

Xtrriage's analysis on translational NCS is as follows: *The largest off-origin peak in the Patterson function is 3.63% of the height of the origin peak. No significant pseudotranslation is detected.*

¹ Intensities estimated from amplitudes.

² Theoretical values of $\langle |L| \rangle$, $\langle L^2 \rangle$ for acentric reflections are 0.5, 0.333 respectively for untwinned datasets, and 0.375, 0.2 for perfectly twinned datasets.

5 Model quality [i](#)

5.1 Standard geometry [i](#)

Bond lengths and bond angles in the following residue types are not validated in this section: GOL, 8LP

The Z score for a bond length (or angle) is the number of standard deviations the observed value is removed from the expected value. A bond length (or angle) with $|Z| > 5$ is considered an outlier worth inspection. RMSZ is the root-mean-square of all Z scores of the bond lengths (or angles).

Mol	Chain	Bond lengths		Bond angles	
		RMSZ	# Z >5	RMSZ	# Z >5
1	A	0.38	0/13908	0.64	4/18870 (0.0%)

There are no bond length outliers.

All (4) bond angle outliers are listed below:

Mol	Chain	Res	Type	Atoms	Z	Observed(°)	Ideal(°)
1	A	717	GLY	N-CA-C	-6.88	95.90	113.10
1	A	781	GLY	N-CA-C	5.38	126.54	113.10
1	A	1190	LEU	CA-CB-CG	5.15	127.14	115.30
1	A	821	LEU	CA-CB-CG	5.01	126.82	115.30

There are no chirality outliers.

There are no planarity outliers.

5.2 Too-close contacts [i](#)

In the following table, the Non-H and H(model) columns list the number of non-hydrogen atoms and hydrogen atoms in the chain respectively. The H(added) column lists the number of hydrogen atoms added and optimized by MolProbity. The Clashes column lists the number of clashes within the asymmetric unit, whereas Symm-Clashes lists symmetry related clashes.

Mol	Chain	Non-H	H(model)	H(added)	Clashes	Symm-Clashes
1	A	13618	0	13648	295	0
2	A	6	0	8	3	0
3	A	33	0	0	3	0
All	All	13657	0	13656	296	0

The all-atom clashscore is defined as the number of clashes found per 1000 atoms (including hydrogen atoms). The all-atom clashscore for this structure is 11.

All (296) close contacts within the same asymmetric unit are listed below, sorted by their clash magnitude.

Atom-1	Atom-2	Interatomic distance (Å)	Clash overlap (Å)
1:A:742:CYS:O	1:A:744:GLU:N	2.07	0.88
1:A:820:ASN:OD1	1:A:855:ARG:NH1	2.11	0.83
1:A:1967:THR:O	1:A:1970:HIS:ND1	2.15	0.79
1:A:1255:PHE:HB2	3:A:2202:8LP:C27	2.12	0.79
1:A:780:TYR:O	1:A:782:PHE:N	2.18	0.77
1:A:768:GLN:O	1:A:775:LYS:NZ	2.18	0.76
1:A:732:GLY:O	1:A:736:ARG:HB2	1.85	0.76
1:A:2013:ARG:NH2	1:A:2113:TYR:OH	2.18	0.76
1:A:753:ARG:HG2	1:A:761:VAL:HG22	1.69	0.74
1:A:770:LYS:O	1:A:775:LYS:NZ	2.17	0.74
1:A:601:GLY:HA3	1:A:1537:THR:HG23	1.67	0.74
1:A:988:ALA:HB2	1:A:998:VAL:HG11	1.68	0.73
1:A:1157:ASN:HB3	1:A:1160:GLU:OE1	1.88	0.73
1:A:1337:ASN:OD1	1:A:1341:ASN:ND2	2.19	0.72
1:A:760:GLU:HG2	1:A:805:HIS:CE1	2.24	0.72
1:A:1727:HIS:HE2	1:A:1770:TYR:HH	1.37	0.72
1:A:488:LEU:HD11	1:A:501:LEU:HD13	1.71	0.71
1:A:2013:ARG:NH2	1:A:2052:ILE:H	1.89	0.71
1:A:610:ARG:NH2	1:A:645:ASP:O	2.24	0.69
1:A:2067:VAL:HG22	1:A:2079:ILE:HG13	1.74	0.69
1:A:715:HIS:HB3	1:A:719:ASN:HB3	1.77	0.66
1:A:736:ARG:NH1	1:A:773:GLU:OE2	2.27	0.66
1:A:1819:ALA:HB2	1:A:1829:ILE:HG12	1.77	0.65
1:A:423:MET:HG2	1:A:425:ASN:HB2	1.78	0.65
1:A:487:LYS:HE2	1:A:676:PHE:HE1	1.62	0.64
1:A:701:PHE:HA	1:A:704:MET:HE2	1.79	0.64
1:A:2054:PRO:HG2	1:A:2055:LEU:HD12	1.79	0.63
1:A:1514:PHE:HB3	1:A:1518:VAL:HG21	1.79	0.63
1:A:804:LYS:HE2	1:A:861:TYR:CE2	2.34	0.63
1:A:758:SER:HA	1:A:761:VAL:HB	1.79	0.62
1:A:463:PRO:HG2	1:A:466:LYS:HG3	1.80	0.62
1:A:1130:ARG:HG3	1:A:1140:VAL:HG11	1.82	0.61
1:A:986:ARG:O	1:A:990:HIS:ND1	2.33	0.61
1:A:1148:PHE:CE2	1:A:1152:ARG:HD2	2.36	0.61
1:A:436:ARG:HG2	1:A:445:VAL:HG22	1.81	0.60
1:A:424:ALA:HB3	1:A:888:PRO:HG2	1.82	0.60
1:A:498:ASN:HD21	1:A:648:LEU:HD13	1.67	0.60
1:A:731:THR:HG23	1:A:810:VAL:HG13	1.84	0.60
1:A:742:CYS:HA	1:A:748:LEU:HD12	1.82	0.60
1:A:790:THR:OG1	1:A:791:ARG:N	2.34	0.60

Continued on next page...

Continued from previous page...

Atom-1	Atom-2	Interatomic distance (Å)	Clash overlap (Å)
1:A:696:LYS:O	1:A:700:ARG:HG3	2.01	0.60
1:A:751:PHE:N	1:A:780:TYR:OH	2.35	0.60
1:A:566:VAL:HG22	1:A:585:ILE:HB	1.83	0.59
1:A:1195:ARG:NH1	1:A:1260:GLU:OE2	2.35	0.59
1:A:1962:GLN:NE2	1:A:2114:MET:O	2.33	0.59
1:A:1049:LYS:HD3	1:A:1050:GLU:H	1.67	0.59
1:A:1358:ILE:HA	1:A:1361:GLU:HB2	1.83	0.59
1:A:745:LYS:O	1:A:748:LEU:HG	2.03	0.59
1:A:1314:ASN:HB3	1:A:1317:PHE:HB2	1.84	0.59
1:A:1855:TYR:HB3	1:A:1891:THR:HG21	1.84	0.59
1:A:712:ILE:HG23	1:A:721:VAL:HG21	1.85	0.59
1:A:876:LEU:HD22	1:A:879:TYR:HE2	1.67	0.59
1:A:753:ARG:HD3	1:A:761:VAL:HG13	1.84	0.58
1:A:1667:GLN:NE2	1:A:1710:LYS:HE3	2.18	0.58
1:A:876:LEU:HD22	1:A:879:TYR:CE2	2.39	0.57
1:A:2076:LEU:HD21	1:A:2079:ILE:HB	1.85	0.57
1:A:617:ILE:HG22	1:A:652:SER:HB2	1.84	0.57
1:A:1341:ASN:O	1:A:1366:ARG:NH1	2.38	0.57
1:A:1666:THR:HG21	1:A:1714:PHE:CE2	2.40	0.56
1:A:1302:LEU:N	1:A:1334:GLN:OE1	2.30	0.56
1:A:738:ILE:HD11	1:A:782:PHE:CZ	2.40	0.56
1:A:1594:GLU:HG2	1:A:1614:LEU:HD22	1.86	0.56
1:A:1953:MET:HE3	1:A:2114:MET:HG3	1.87	0.56
1:A:703:ILE:O	1:A:707:ILE:HG12	2.05	0.56
1:A:1672:LYS:HG3	1:A:1860:ILE:HD13	1.89	0.55
1:A:731:THR:CG2	1:A:784:ILE:HB	2.37	0.55
1:A:838:LYS:HD2	1:A:842:THR:HG21	1.88	0.55
1:A:1560:ILE:HG13	1:A:1658:ALA:HB2	1.88	0.55
1:A:1350:ALA:HB3	1:A:1356:LYS:HD3	1.89	0.55
1:A:2068:ILE:O	1:A:2077:ILE:HG13	2.07	0.55
1:A:1368:LEU:HD22	1:A:1403:LYS:HE3	1.89	0.54
1:A:1567:LYS:O	1:A:1571:LEU:HD13	2.06	0.54
1:A:1577:LEU:HD11	1:A:1615:ASN:HB2	1.88	0.54
1:A:1447:ASN:HA	1:A:1483:ARG:NH2	2.22	0.54
1:A:516:CYS:SG	1:A:649:ILE:HG12	2.48	0.54
1:A:1038:GLN:O	1:A:1042:GLU:HG2	2.07	0.54
1:A:1360:ALA:HB2	1:A:1490:LEU:HD11	1.90	0.54
1:A:1939:ALA:C	1:A:1941:ALA:H	2.12	0.54
1:A:668:ASP:HB3	1:A:671:LYS:HB2	1.90	0.54
1:A:1351:PRO:HG3	1:A:1516:PRO:HA	1.90	0.53
1:A:503:ALA:HB3	1:A:509:LYS:HE3	1.89	0.53

Continued on next page...

Continued from previous page...

Atom-1	Atom-2	Interatomic distance (Å)	Clash overlap (Å)
1:A:802:ALA:O	1:A:804:LYS:NZ	2.41	0.53
1:A:567:ALA:HB3	1:A:583:THR:HG21	1.89	0.53
1:A:1148:PHE:CZ	1:A:1152:ARG:HD2	2.43	0.53
1:A:597:THR:HA	1:A:602:GLU:HB2	1.91	0.53
1:A:708:VAL:O	1:A:712:ILE:HG13	2.08	0.53
1:A:540:TYR:OH	1:A:615:ASP:OD2	2.20	0.53
1:A:1335:VAL:O	1:A:1339:VAL:HG23	2.08	0.53
1:A:603:ARG:HH21	1:A:607:GLN:HG3	1.74	0.53
1:A:484:ILE:HD12	1:A:484:ILE:H	1.73	0.52
1:A:550:GLU:HB2	1:A:818:GLY:O	2.08	0.52
1:A:1146:LYS:HE3	1:A:1164:LEU:O	2.09	0.52
1:A:1112:LEU:HG	1:A:1116:LYS:HE3	1.90	0.52
1:A:715:HIS:HB3	1:A:719:ASN:CB	2.39	0.52
1:A:905:ILE:HG22	1:A:981:VAL:HG22	1.91	0.52
1:A:974:LYS:HD2	1:A:974:LYS:H	1.75	0.52
1:A:2040:GLN:OE1	1:A:2089:LYS:HG2	2.10	0.51
1:A:1088:ALA:HB1	1:A:1118:ILE:HD13	1.93	0.51
1:A:1481:ILE:HG23	1:A:1483:ARG:H	1.75	0.51
1:A:1770:TYR:HE2	2:A:2201:GOL:H11	1.75	0.51
1:A:459:GLU:OE2	1:A:483:ARG:NH2	2.43	0.51
1:A:686:GLU:HB2	1:A:864:LYS:HE3	1.92	0.51
1:A:709:TYR:OH	1:A:748:LEU:HD22	2.11	0.51
1:A:1994:ASN:O	1:A:1996:LEU:N	2.43	0.51
1:A:743:LEU:HA	1:A:747:THR:HA	1.93	0.51
1:A:753:ARG:HE	1:A:780:TYR:HA	1.74	0.51
1:A:811:SER:OG	1:A:812:THR:N	2.44	0.51
1:A:713:MET:SD	1:A:749:GLY:HA3	2.51	0.50
1:A:781:GLY:O	1:A:807:GLN:N	2.43	0.50
1:A:538:ILE:HB	1:A:585:ILE:HG13	1.93	0.50
1:A:1994:ASN:C	1:A:1996:LEU:H	2.13	0.50
1:A:1716:LYS:HD3	1:A:1717:PHE:CE2	2.46	0.50
1:A:753:ARG:CG	1:A:761:VAL:HG22	2.39	0.50
1:A:1189:HIS:HB3	1:A:1201:GLU:HB2	1.94	0.50
1:A:1499:ASP:OD2	1:A:1766:GLN:HG3	2.11	0.50
1:A:1457:HIS:CD2	1:A:1492:SER:H	2.30	0.50
1:A:736:ARG:HH22	1:A:773:GLU:HB3	1.76	0.50
1:A:1666:THR:HG21	1:A:1714:PHE:CZ	2.47	0.50
1:A:621:HIS:O	1:A:892:GLN:NE2	2.29	0.50
1:A:965:ASP:HA	1:A:970:VAL:O	2.11	0.50
1:A:1049:LYS:O	1:A:1051:SER:N	2.45	0.49
1:A:986:ARG:HG3	1:A:990:HIS:HE1	1.76	0.49

Continued on next page...

Continued from previous page...

Atom-1	Atom-2	Interatomic distance (Å)	Clash overlap (Å)
1:A:518:LEU:HD23	1:A:521:ILE:HD12	1.94	0.49
1:A:637:ARG:HH22	1:A:919:TRP:HB2	1.77	0.49
1:A:1901:ARG:HG3	1:A:1961:LYS:NZ	2.28	0.49
1:A:603:ARG:NH1	1:A:642:THR:HG21	2.28	0.49
1:A:876:LEU:C	1:A:878:TYR:N	2.66	0.49
1:A:1497:ALA:O	1:A:1500:VAL:HG12	2.13	0.49
1:A:1661:VAL:HG23	1:A:1691:ALA:HB2	1.94	0.49
1:A:467:LEU:HB2	1:A:468:PRO:HD2	1.95	0.49
1:A:1836:LEU:HD22	1:A:1930:LEU:HD21	1.95	0.48
1:A:1456:VAL:HG12	1:A:1491:SER:HB2	1.95	0.48
1:A:1966:PHE:HD2	1:A:1970:HIS:NE2	2.11	0.48
1:A:785:HIS:O	1:A:811:SER:HA	2.14	0.48
1:A:1456:VAL:CG1	1:A:1491:SER:HB2	2.44	0.48
1:A:611:LEU:HD11	1:A:649:ILE:HD13	1.95	0.48
1:A:2030:ARG:HG2	1:A:2100:GLY:H	1.78	0.48
1:A:1559:VAL:HG22	1:A:1660:LEU:HB3	1.96	0.48
1:A:632:VAL:O	1:A:636:ILE:HG12	2.13	0.48
1:A:487:LYS:HE2	1:A:676:PHE:CE1	2.46	0.48
1:A:762:LEU:HA	1:A:765:GLU:HG2	1.94	0.48
1:A:1953:MET:CE	1:A:2114:MET:HG3	2.44	0.48
1:A:1963:LEU:HD22	1:A:2007:VAL:HG13	1.96	0.48
1:A:1531:ASN:O	1:A:1532:ILE:HG13	2.14	0.48
1:A:521:ILE:HG23	1:A:531:ILE:HD11	1.96	0.48
1:A:1419:LEU:HA	1:A:1425:ILE:HD13	1.96	0.47
1:A:1312:LEU:HD12	1:A:1340:TYR:CZ	2.49	0.47
1:A:1398:GLN:O	1:A:1402:ASN:HA	2.14	0.47
1:A:1945:LEU:HA	1:A:1948:MET:HG2	1.95	0.47
1:A:2043:ARG:NH2	1:A:2085:GLN:O	2.26	0.47
1:A:578:GLU:C	1:A:580:ILE:H	2.18	0.47
1:A:654:THR:HG21	1:A:676:PHE:O	2.15	0.47
1:A:1012:ILE:HD12	1:A:1047:PRO:O	2.15	0.47
1:A:1994:ASN:OD1	1:A:1994:ASN:N	2.48	0.47
1:A:1066:PHE:CG	1:A:1085:THR:HG21	2.50	0.47
1:A:731:THR:O	1:A:810:VAL:HG11	2.14	0.47
1:A:986:ARG:HG3	1:A:990:HIS:CE1	2.50	0.47
1:A:757:ALA:O	1:A:761:VAL:HG21	2.14	0.47
1:A:2101:ALA:O	1:A:2102:HIS:ND1	2.48	0.47
1:A:823:ALA:O	1:A:857:GLY:N	2.45	0.47
1:A:1044:VAL:HA	1:A:1045:PRO:HD3	1.73	0.46
1:A:1321:TYR:HD2	1:A:1325:PHE:CZ	2.33	0.46
1:A:2064:TRP:CZ3	1:A:2110:SER:HB2	2.49	0.46

Continued on next page...

Continued from previous page...

Atom-1	Atom-2	Interatomic distance (Å)	Clash overlap (Å)
1:A:1187:SER:HB3	1:A:1203:THR:HB	1.96	0.46
1:A:1770:TYR:CE2	2:A:2201:GOL:H11	2.50	0.46
1:A:1940:LEU:HD23	1:A:1943:MET:SD	2.56	0.46
1:A:1309:VAL:HG23	1:A:1326:PRO:O	2.16	0.46
1:A:594:ASP:O	1:A:598:ARG:HG3	2.16	0.46
1:A:790:THR:O	1:A:791:ARG:HB2	2.14	0.46
1:A:2041:LEU:HD11	1:A:2108:PHE:CE1	2.50	0.46
1:A:498:ASN:ND2	1:A:648:LEU:HD13	2.29	0.46
1:A:1970:HIS:HD2	1:A:1974:CYS:SG	2.38	0.46
1:A:1194:THR:HG22	1:A:1195:ARG:H	1.80	0.46
1:A:1292:PRO:HG3	1:A:1767:ASN:OD1	2.15	0.46
1:A:595:ILE:HG22	1:A:596:ILE:HD12	1.98	0.46
1:A:1012:ILE:HD11	1:A:1047:PRO:HD2	1.98	0.46
1:A:1337:ASN:O	1:A:1341:ASN:HB2	2.16	0.46
1:A:1815:LEU:H	1:A:1815:LEU:HD12	1.81	0.46
1:A:704:MET:O	1:A:708:VAL:HG23	2.16	0.46
1:A:1308:PRO:HA	1:A:1327:PHE:HD1	1.81	0.46
1:A:1515:HIS:O	1:A:1518:VAL:HG22	2.15	0.46
1:A:1148:PHE:HE1	1:A:1153:LEU:HD12	1.80	0.46
1:A:1195:ARG:HD2	1:A:1294:LYS:HB2	1.97	0.46
1:A:2009:ARG:HH11	1:A:2052:ILE:HD12	1.80	0.46
1:A:519:ARG:HD3	1:A:647:ARG:NH1	2.31	0.46
1:A:1604:LEU:HD21	1:A:1631:LEU:HD23	1.97	0.45
1:A:873:HIS:CG	1:A:874:GLY:N	2.85	0.45
1:A:1398:GLN:HA	1:A:1403:LYS:O	2.16	0.45
1:A:409:LEU:HD13	1:A:414:LEU:HD11	1.99	0.45
1:A:439:ARG:HA	1:A:439:ARG:HH21	1.80	0.45
1:A:790:THR:HB	1:A:793:ASP:HB2	1.99	0.45
1:A:1527:ILE:HD13	1:A:1715:LYS:HG2	1.98	0.45
1:A:1713:PHE:HB2	3:A:2202:8LP:C27	2.47	0.45
1:A:554:SER:O	1:A:558:ARG:HG3	2.17	0.45
1:A:1966:PHE:HD2	1:A:1970:HIS:CE1	2.35	0.45
1:A:2014:TYR:HA	1:A:2015:PRO:HD3	1.77	0.45
1:A:2019:LEU:HD22	1:A:2120:TYR:CE2	2.51	0.45
2:A:2201:GOL:H2	3:A:2202:8LP:C8	2.47	0.45
1:A:737:ALA:HA	1:A:740:ASP:HB3	1.99	0.45
1:A:804:LYS:HE2	1:A:861:TYR:CD2	2.52	0.45
1:A:1384:ALA:HB1	1:A:1653:GLY:HA2	1.98	0.45
1:A:760:GLU:HG2	1:A:805:HIS:ND1	2.32	0.45
1:A:1296:PRO:HG3	1:A:1498:LYS:HE3	2.00	0.44
1:A:853:LEU:HD23	1:A:853:LEU:HA	1.70	0.44

Continued on next page...

Continued from previous page...

Atom-1	Atom-2	Interatomic distance (Å)	Clash overlap (Å)
1:A:1865:ASP:OD1	1:A:1865:ASP:N	2.50	0.44
1:A:837:GLU:O	1:A:1026:ASN:HB2	2.18	0.44
1:A:1814:ASN:HA	1:A:1817:MET:CE	2.48	0.44
1:A:1950:THR:HA	1:A:2056:PHE:CD2	2.53	0.44
1:A:629:GLU:HA	1:A:664:PHE:HZ	1.83	0.44
1:A:689:TYR:HE2	1:A:883:LEU:HD12	1.83	0.44
1:A:917:VAL:HG13	1:A:953:ARG:HB3	1.99	0.44
1:A:701:PHE:HA	1:A:704:MET:CE	2.47	0.44
1:A:991:TYR:CE2	1:A:1097:GLU:HG3	2.53	0.44
1:A:473:ALA:O	1:A:562:TYR:OH	2.30	0.44
1:A:484:ILE:HG23	1:A:676:PHE:CE2	2.53	0.44
1:A:2051:VAL:HG13	1:A:2113:TYR:OH	2.18	0.43
1:A:473:ALA:HB3	1:A:562:TYR:CZ	2.53	0.43
1:A:928:ARG:HB3	1:A:936:TYR:CE1	2.53	0.43
1:A:464:VAL:O	1:A:467:LEU:HG	2.18	0.43
1:A:606:THR:HA	1:A:609:VAL:HG23	2.00	0.43
1:A:771:ASN:OD1	1:A:772:LEU:N	2.44	0.43
1:A:1225:VAL:HG11	1:A:1256:VAL:HG11	2.01	0.43
1:A:1041:LEU:HA	1:A:1044:VAL:HG22	2.01	0.43
1:A:1162:GLY:HA3	1:A:1168:PRO:HA	2.00	0.43
1:A:2084:LEU:O	1:A:2085:GLN:HB2	2.19	0.43
1:A:764:THR:HB	1:A:778:LEU:O	2.18	0.43
1:A:767:GLU:HG3	1:A:800:LEU:HD11	2.01	0.43
1:A:1379:ILE:HA	1:A:1427:SER:O	2.19	0.43
1:A:1380:THR:O	1:A:1429:PRO:HD3	2.19	0.43
1:A:611:LEU:HD12	1:A:647:ARG:O	2.18	0.43
1:A:706:GLU:O	1:A:710:GLU:HG2	2.18	0.43
1:A:825:THR:HA	1:A:866:GLU:O	2.19	0.43
1:A:663:THR:HB	1:A:927:ILE:HD13	2.00	0.43
1:A:1165:ILE:HG23	1:A:1167:MET:HB3	2.00	0.42
1:A:1192:PRO:HG3	1:A:1289:LEU:HD11	2.01	0.42
1:A:1950:THR:HA	1:A:2056:PHE:HD2	1.84	0.42
1:A:579:GLU:C	1:A:581:SER:H	2.23	0.42
1:A:1648:ARG:HD2	1:A:1679:TYR:CE1	2.55	0.42
1:A:692:ILE:HG12	1:A:871:THR:O	2.20	0.42
1:A:1725:GLU:HB3	1:A:1771:TYR:OH	2.20	0.42
1:A:569:LEU:O	1:A:592:LYS:HE2	2.19	0.42
1:A:681:ARG:NH1	1:A:685:LEU:HD22	2.34	0.42
1:A:887:LEU:HA	1:A:888:PRO:HD3	1.79	0.42
1:A:995:ASN:O	1:A:998:VAL:HG22	2.19	0.42
1:A:1914:GLU:O	1:A:1917:SER:HB3	2.19	0.42

Continued on next page...

Continued from previous page...

Atom-1	Atom-2	Interatomic distance (Å)	Clash overlap (Å)
1:A:2080:LYS:HE3	1:A:2080:LYS:HB2	1.81	0.42
1:A:543:PRO:HG3	1:A:616:GLU:HB2	2.02	0.42
1:A:718:LYS:HE3	1:A:718:LYS:HB3	1.88	0.42
1:A:1012:ILE:CD1	1:A:1047:PRO:HD2	2.50	0.42
1:A:1598:ILE:HB	1:A:1599:PRO:HD3	2.01	0.42
1:A:2068:ILE:CG2	1:A:2077:ILE:HD11	2.50	0.42
1:A:876:LEU:HD23	1:A:876:LEU:HA	1.63	0.42
1:A:739:ARG:NH2	1:A:776:ASP:OD1	2.53	0.42
1:A:1838:ALA:HB2	1:A:1935:TRP:NE1	2.35	0.42
1:A:1515:HIS:CG	1:A:1516:PRO:HD2	2.55	0.42
1:A:2019:LEU:HD12	1:A:2041:LEU:HD21	2.01	0.42
1:A:753:ARG:HH21	1:A:780:TYR:HB2	1.85	0.42
1:A:987:ILE:HG23	1:A:991:TYR:CD2	2.55	0.42
1:A:518:LEU:HD23	1:A:518:LEU:HA	1.93	0.41
1:A:1503:TRP:NE1	1:A:1757:TRP:O	2.54	0.41
1:A:1920:ILE:HD13	1:A:1920:ILE:HA	1.90	0.41
1:A:1863:HIS:O	1:A:1863:HIS:ND1	2.54	0.41
1:A:1966:PHE:HD2	1:A:1970:HIS:CD2	2.39	0.41
1:A:1965:HIS:HB3	1:A:2003:GLN:HE21	1.85	0.41
1:A:1542:MET:C	1:A:1545:PRO:HD2	2.41	0.41
1:A:905:ILE:HG12	1:A:910:VAL:HG22	2.02	0.41
1:A:595:ILE:HG13	1:A:992:TYR:CD1	2.56	0.41
1:A:1139:VAL:O	1:A:1143:ILE:HG13	2.20	0.41
1:A:768:GLN:CD	1:A:779:PRO:HD3	2.41	0.41
1:A:835:SER:O	1:A:839:GLY:N	2.54	0.41
1:A:928:ARG:NH2	1:A:932:SER:OG	2.51	0.41
1:A:1817:MET:HE3	1:A:1817:MET:HB2	1.88	0.41
1:A:2013:ARG:NH1	1:A:2052:ILE:HB	2.36	0.41
1:A:2040:GLN:HE22	1:A:2089:LYS:HD2	1.86	0.41
1:A:489:TYR:HE1	1:A:490:ARG:NH1	2.18	0.41
1:A:524:HIS:CD2	1:A:536:PHE:CD1	3.09	0.41
1:A:876:LEU:C	1:A:878:TYR:H	2.24	0.41
1:A:1586:ARG:O	1:A:1587:GLN:HB2	2.20	0.41
1:A:1519:ARG:NH2	1:A:1691:ALA:O	2.37	0.41
1:A:462:LEU:HD13	1:A:489:TYR:CE1	2.55	0.41
1:A:642:THR:C	1:A:644:GLU:H	2.25	0.41
1:A:1430:GLU:HG2	1:A:1431:LYS:N	2.35	0.41
1:A:1459:ILE:HD11	1:A:1468:GLU:HB2	2.03	0.41
1:A:564:ILE:HD12	1:A:584:GLN:HG2	2.03	0.41
1:A:2089:LYS:HE2	1:A:2089:LYS:HB3	1.84	0.40
1:A:735:ALA:HB2	1:A:810:VAL:CG1	2.50	0.40

Continued on next page...

Continued from previous page...

Atom-1	Atom-2	Interatomic distance (Å)	Clash overlap (Å)
1:A:1039:LYS:O	1:A:1043:ARG:HG3	2.21	0.40
1:A:1436:SER:O	1:A:1439:TRP:HB3	2.21	0.40
1:A:2051:VAL:HG13	1:A:2113:TYR:CZ	2.57	0.40
1:A:488:LEU:HD13	1:A:512:VAL:HG11	2.04	0.40
1:A:858:ARG:HA	1:A:859:PRO:HD3	1.88	0.40
1:A:877:GLN:O	1:A:880:LEU:HB2	2.20	0.40
1:A:1948:MET:HB2	1:A:1953:MET:O	2.20	0.40
1:A:1149:PRO:HG2	1:A:1152:ARG:HB2	2.04	0.40
1:A:1447:ASN:HA	1:A:1483:ARG:HH22	1.85	0.40
1:A:462:LEU:HA	1:A:463:PRO:HD2	1.89	0.40

There are no symmetry-related clashes.

5.3 Torsion angles [i](#)

5.3.1 Protein backbone [i](#)

In the following table, the Percentiles column shows the percent Ramachandran outliers of the chain as a percentile score with respect to all X-ray entries followed by that with respect to entries of similar resolution.

The Analysed column shows the number of residues for which the backbone conformation was analysed, and the total number of residues.

Mol	Chain	Analysed	Favoured	Allowed	Outliers	Percentiles
1	A	1698/1738 (98%)	1609 (95%)	72 (4%)	17 (1%)	15 48

All (17) Ramachandran outliers are listed below:

Mol	Chain	Res	Type
1	A	527	MET
1	A	743	LEU
1	A	781	GLY
1	A	791	ARG
1	A	1995	ALA
1	A	2031	SER
1	A	2100	GLY
1	A	770	LYS
1	A	1665	ASP
1	A	1993	ARG
1	A	2101	ALA

Continued on next page...

Continued from previous page...

Mol	Chain	Res	Type
1	A	579	GLU
1	A	696	LYS
1	A	742	CYS
1	A	1940	LEU
1	A	1052	ILE
1	A	1584	ILE

5.3.2 Protein sidechains [i](#)

In the following table, the Percentiles column shows the percent sidechain outliers of the chain as a percentile score with respect to all X-ray entries followed by that with respect to entries of similar resolution.

The Analysed column shows the number of residues for which the sidechain conformation was analysed, and the total number of residues.

Mol	Chain	Analysed	Rotameric	Outliers	Percentiles
1	A	1503/1551 (97%)	1475 (98%)	28 (2%)	57 81

All (28) residues with a non-rotameric sidechain are listed below:

Mol	Chain	Res	Type
1	A	434	SER
1	A	462	LEU
1	A	489	TYR
1	A	546	SER
1	A	595	ILE
1	A	602	GLU
1	A	610	ARG
1	A	752	LEU
1	A	939	SER
1	A	1028	THR
1	A	1053	GLU
1	A	1194	THR
1	A	1249	GLU
1	A	1305	GLN
1	A	1307	LEU
1	A	1334	GLN
1	A	1380	THR
1	A	1398	GLN
1	A	1541	SER
1	A	1571	LEU

Continued on next page...

Continued from previous page...

Mol	Chain	Res	Type
1	A	1588	ARG
1	A	1656	VAL
1	A	1731	CYS
1	A	1862	HIS
1	A	1967	THR
1	A	1999	LEU
1	A	2001	ASP
1	A	2052	ILE

Some sidechains can be flipped to improve hydrogen bonding and reduce clashes. All (3) such sidechains are listed below:

Mol	Chain	Res	Type
1	A	715	HIS
1	A	824	HIS
1	A	1179	HIS

5.3.3 RNA [i](#)

There are no RNA molecules in this entry.

5.4 Non-standard residues in protein, DNA, RNA chains [i](#)

There are no non-standard protein/DNA/RNA residues in this entry.

5.5 Carbohydrates [i](#)

There are no carbohydrates in this entry.

5.6 Ligand geometry [i](#)

2 ligands are modelled in this entry.

In the following table, the Counts columns list the number of bonds (or angles) for which Mogul statistics could be retrieved, the number of bonds (or angles) that are observed in the model and the number of bonds (or angles) that are defined in the Chemical Component Dictionary. The Link column lists molecule types, if any, to which the group is linked. The Z score for a bond length (or angle) is the number of standard deviations the observed value is removed from the expected value. A bond length (or angle) with $|Z| > 2$ is considered an outlier worth inspection. RMSZ is the root-mean-square of all Z scores of the bond lengths (or angles).

Mol	Type	Chain	Res	Link	Bond lengths			Bond angles		
					Counts	RMSZ	# Z > 2	Counts	RMSZ	# Z > 2
3	8LP	A	2202	-	36,37,37	1.44	3 (8%)	44,51,51	1.52	7 (15%)
2	GOL	A	2201	-	5,5,5	0.40	0	5,5,5	0.27	0

In the following table, the Chirals column lists the number of chiral outliers, the number of chiral centers analysed, the number of these observed in the model and the number defined in the Chemical Component Dictionary. Similar counts are reported in the Torsion and Rings columns. '-' means no outliers of that kind were identified.

Mol	Type	Chain	Res	Link	Chirals	Torsions	Rings
3	8LP	A	2202	-	-	2/13/25/25	0/5/5/5
2	GOL	A	2201	-	-	0/4/4/4	-

All (3) bond length outliers are listed below:

Mol	Chain	Res	Type	Atoms	Z	Observed(Å)	Ideal(Å)
3	A	2202	8LP	C19-C22	-6.46	1.33	1.40
3	A	2202	8LP	C26-N3	-2.54	1.44	1.48
3	A	2202	8LP	C22-N1	-2.02	1.36	1.39

All (7) bond angle outliers are listed below:

Mol	Chain	Res	Type	Atoms	Z	Observed(°)	Ideal(°)
3	A	2202	8LP	C21-C25-N2	4.91	117.34	109.76
3	A	2202	8LP	C20-N3-C23	3.89	123.45	122.40
3	A	2202	8LP	C27-O3-C18	-3.84	108.17	117.65
3	A	2202	8LP	C12-C17-N2	-2.81	116.06	120.18
3	A	2202	8LP	O2-C24-N2	-2.79	120.26	122.00
3	A	2202	8LP	C21-C22-N1	-2.56	117.07	119.11
3	A	2202	8LP	C15-C26-N3	-2.03	109.34	112.40

There are no chirality outliers.

All (2) torsion outliers are listed below:

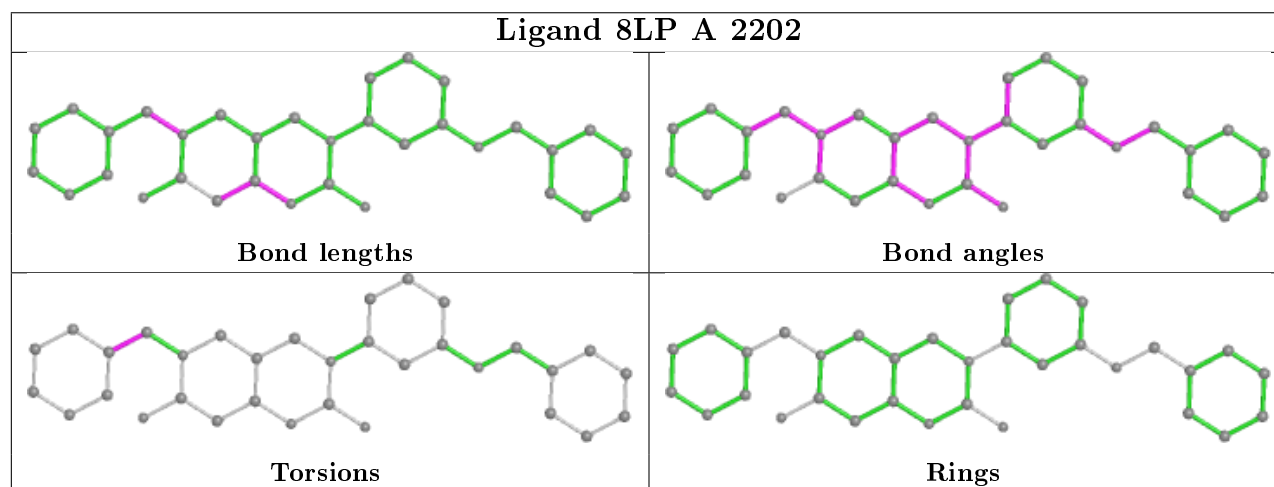
Mol	Chain	Res	Type	Atoms
3	A	2202	8LP	C8-C15-C26-N3
3	A	2202	8LP	C9-C15-C26-N3

There are no ring outliers.

2 monomers are involved in 5 short contacts:

Mol	Chain	Res	Type	Clashes	Symm-Clashes
3	A	2202	8LP	3	0
2	A	2201	GOL	3	0

The following is a two-dimensional graphical depiction of Mogul quality analysis of bond lengths, bond angles, torsion angles, and ring geometry for all instances of the Ligand of Interest. In addition, ligands with molecular weight > 250 and outliers as shown on the validation Tables will also be included. For torsion angles, if less than 5% of the Mogul distribution of torsion angles is within 10 degrees of the torsion angle in question, then that torsion angle is considered an outlier. Any bond that is central to one or more torsion angles identified as an outlier by Mogul will be highlighted in the graph. For rings, the root-mean-square deviation (RMSD) between the ring in question and similar rings identified by Mogul is calculated over all ring torsion angles. If the average RMSD is greater than 60 degrees and the minimal RMSD between the ring in question and any Mogul-identified rings is also greater than 60 degrees, then that ring is considered an outlier. The outliers are highlighted in purple. The color gray indicates Mogul did not find sufficient equivalents in the CSD to analyse the geometry.



5.7 Other polymers [\(i\)](#)

There are no such residues in this entry.

5.8 Polymer linkage issues [\(i\)](#)

There are no chain breaks in this entry.

6 Fit of model and data

6.1 Protein, DNA and RNA chains

In the following table, the column labelled ‘#RSRZ> 2’ contains the number (and percentage) of RSRZ outliers, followed by percent RSRZ outliers for the chain as percentile scores relative to all X-ray entries and entries of similar resolution. The OWAB column contains the minimum, median, 95th percentile and maximum values of the occupancy-weighted average B-factor per residue. The column labelled ‘Q< 0.9’ lists the number of (and percentage) of residues with an average occupancy less than 0.9.

Mol	Chain	Analysed	<RSRZ>	#RSRZ>2	OWAB(Å ²)	Q<0.9
1	A	1706/1738 (98%)	0.54	145 (8%) 10 6	57, 102, 157, 200	0

All (145) RSRZ outliers are listed below:

Mol	Chain	Res	Type	RSRZ
1	A	1963	LEU	6.8
1	A	746	ASP	6.8
1	A	2016	ASN	6.7
1	A	2010	PHE	6.3
1	A	2035	VAL	6.3
1	A	722	LEU	6.1
1	A	2092	LEU	6.1
1	A	2104	TYR	5.4
1	A	809	LEU	5.2
1	A	2041	LEU	5.0
1	A	1050	GLU	4.9
1	A	783	ALA	4.7
1	A	2038	LEU	4.6
1	A	2004	ILE	4.6
1	A	875	GLU	4.6
1	A	1983	PHE	4.5
1	A	2015	PRO	4.5
1	A	2017	ILE	4.5
1	A	2037	VAL	4.4
1	A	2085	GLN	4.4
1	A	403	LEU	4.4
1	A	437	ARG	4.4
1	A	1365	LEU	4.3
1	A	2122	PHE	4.2
1	A	694	GLU	4.2
1	A	782	PHE	4.1
1	A	2022	GLU	4.1

Continued on next page...

Continued from previous page...

Mol	Chain	Res	Type	RSRZ
1	A	2006	ASP	4.1
1	A	2019	LEU	3.9
1	A	747	THR	3.9
1	A	1960	LEU	3.8
1	A	2044	GLU	3.8
1	A	763	ARG	3.8
1	A	2052	ILE	3.8
1	A	2047	VAL	3.7
1	A	530	THR	3.6
1	A	789	MET	3.6
1	A	525	ILE	3.6
1	A	1998	GLN	3.6
1	A	774	LEU	3.6
1	A	692	ILE	3.5
1	A	2005	ALA	3.5
1	A	1322	GLN	3.4
1	A	873	HIS	3.4
1	A	1982	VAL	3.4
1	A	2048	THR	3.4
1	A	2102	HIS	3.3
1	A	2068	ILE	3.3
1	A	2084	LEU	3.2
1	A	571	GLY	3.2
1	A	740	ASP	3.2
1	A	432	ASP	3.2
1	A	1969	GLU	3.2
1	A	2013	ARG	3.1
1	A	1971	ILE	3.1
1	A	2088	ALA	3.1
1	A	2043	ARG	3.1
1	A	526	ASN	3.0
1	A	2123	SER	3.0
1	A	1317	PHE	3.0
1	A	2077	ILE	2.9
1	A	435	PHE	2.9
1	A	1845	LEU	2.9
1	A	2086	GLN	2.9
1	A	531	ILE	2.9
1	A	1964	PRO	2.9
1	A	1482	GLU	2.9
1	A	750	LEU	2.9
1	A	2089	LYS	2.8

Continued on next page...

Continued from previous page...

Mol	Chain	Res	Type	RSRZ
1	A	1966	PHE	2.8
1	A	442	TYR	2.8
1	A	787	ALA	2.8
1	A	1161	ILE	2.8
1	A	752	LEU	2.8
1	A	2120	TYR	2.8
1	A	753	ARG	2.7
1	A	2001	ASP	2.7
1	A	2031	SER	2.7
1	A	701	PHE	2.7
1	A	738	ILE	2.7
1	A	2023	VAL	2.7
1	A	436	ARG	2.7
1	A	748	LEU	2.6
1	A	2036	VAL	2.6
1	A	2039	VAL	2.6
1	A	2007	VAL	2.6
1	A	2076	LEU	2.5
1	A	2101	ALA	2.5
1	A	2090	VAL	2.5
1	A	2103	ASN	2.5
1	A	821	LEU	2.5
1	A	1289	LEU	2.5
1	A	2014	TYR	2.5
1	A	2029	ILE	2.5
1	A	2008	ALA	2.4
1	A	742	CYS	2.4
1	A	870	ILE	2.4
1	A	758	SER	2.4
1	A	1974	CYS	2.4
1	A	1940	LEU	2.4
1	A	514	LEU	2.4
1	A	1773	LEU	2.4
1	A	1869	ARG	2.3
1	A	702	GLN	2.3
1	A	734	THR	2.3
1	A	1249	GLU	2.3
1	A	1313	ARG	2.3
1	A	1868	LEU	2.3
1	A	726	HIS	2.3
1	A	469	LYS	2.3
1	A	754	GLU	2.2

Continued on next page...

Continued from previous page...

Mol	Chain	Res	Type	RSRZ
1	A	690	VAL	2.2
1	A	489	TYR	2.2
1	A	1421	LYS	2.2
1	A	778	LEU	2.2
1	A	1148	PHE	2.2
1	A	2094	PHE	2.2
1	A	406	ARG	2.2
1	A	705	ASN	2.2
1	A	2118	GLN	2.2
1	A	470	TYR	2.2
1	A	949	LEU	2.2
1	A	518	LEU	2.2
1	A	536	PHE	2.2
1	A	1368	LEU	2.1
1	A	1872	ALA	2.1
1	A	829	LYS	2.1
1	A	515	MET	2.1
1	A	2003	GLN	2.1
1	A	1225	VAL	2.1
1	A	1423	ASN	2.1
1	A	745	LYS	2.1
1	A	709	TYR	2.0
1	A	2040	GLN	2.0
1	A	732	GLY	2.0
1	A	1295	TYR	2.0
1	A	1324	LYS	2.0
1	A	464	VAL	2.0
1	A	468	PRO	2.0
1	A	785	HIS	2.0
1	A	434	SER	2.0
1	A	757	ALA	2.0
1	A	781	GLY	2.0
1	A	1954	TRP	2.0
1	A	555	PHE	2.0

6.2 Non-standard residues in protein, DNA, RNA chains [i](#)

There are no non-standard protein/DNA/RNA residues in this entry.

6.3 Carbohydrates [i](#)

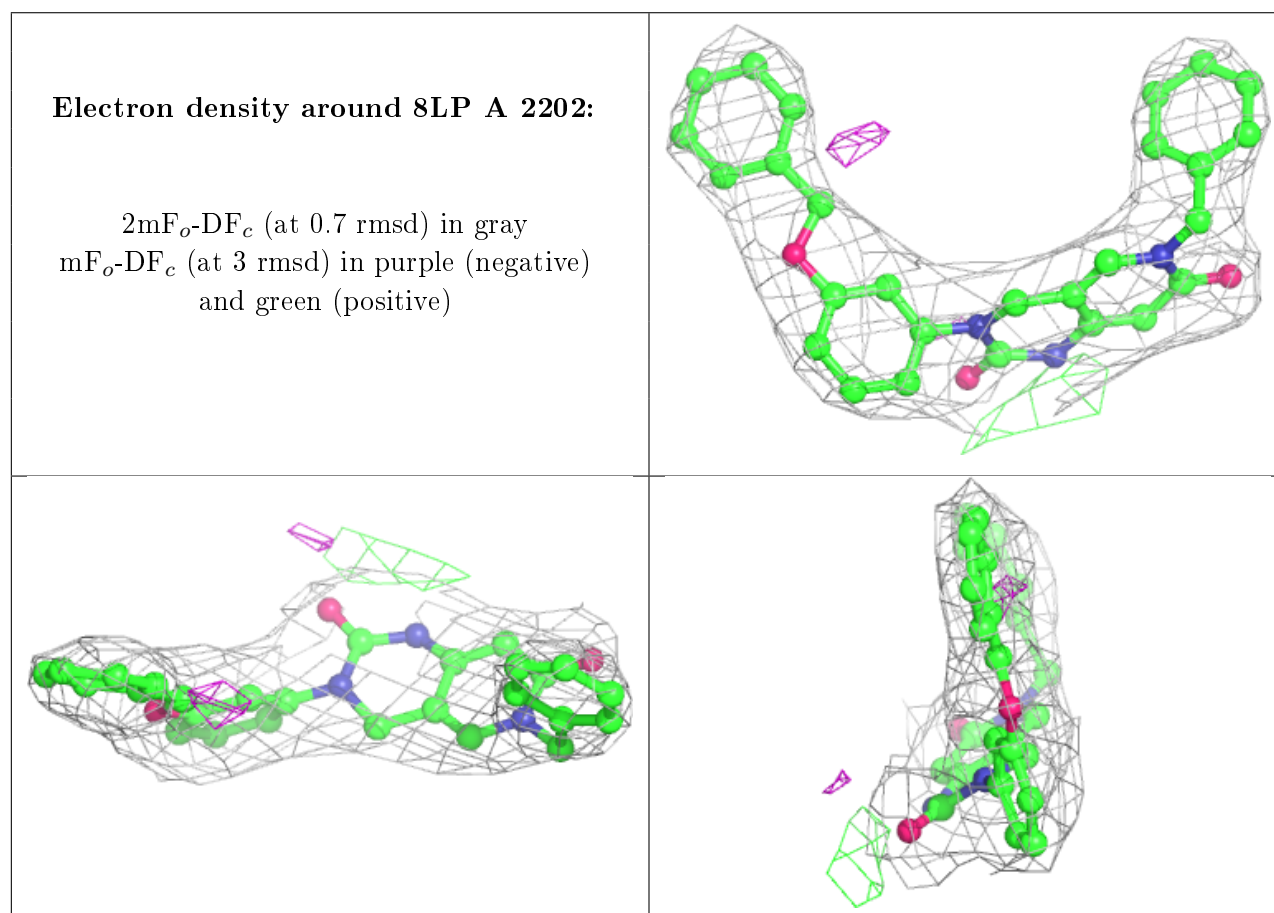
There are no carbohydrates in this entry.

6.4 Ligands [i](#)

In the following table, the Atoms column lists the number of modelled atoms in the group and the number defined in the chemical component dictionary. The B-factors column lists the minimum, median, 95th percentile and maximum values of B factors of atoms in the group. The column labelled 'Q< 0.9' lists the number of atoms with occupancy less than 0.9.

Mol	Type	Chain	Res	Atoms	RSCC	RSR	B-factors(\AA^2)	Q<0.9
2	GOL	A	2201	6/6	0.91	0.22	71,71,76,81	0
3	8LP	A	2202	33/33	0.93	0.23	63,71,78,83	0

The following is a graphical depiction of the model fit to experimental electron density of all instances of the Ligand of Interest. In addition, ligands with molecular weight > 250 and outliers as shown on the geometry validation Tables will also be included. Each fit is shown from different orientation to approximate a three-dimensional view.



6.5 Other polymers

There are no such residues in this entry.