



# Full wwPDB X-ray Structure Validation Report ⓘ

Oct 5, 2023 – 03:13 AM EDT

PDB ID : 6UT0  
Title : Identification of the Clinical Development Candidate MRTX849, a Covalent KRASG12C Inhibitor for the Treatment of Cancer  
Authors : Vigers, G.P.; Smith, D.J.  
Deposited on : 2019-10-29  
Resolution : 1.94 Å(reported)

This is a Full wwPDB X-ray Structure Validation Report for a publicly released PDB entry.

We welcome your comments at [validation@mail.wwpdb.org](mailto:validation@mail.wwpdb.org)

A user guide is available at

<https://www.wwpdb.org/validation/2017/XrayValidationReportHelp>

with specific help available everywhere you see the ⓘ symbol.

The types of validation reports are described at

<http://www.wwpdb.org/validation/2017/FAQs#types>.

---

The following versions of software and data (see [references ⓘ](#)) were used in the production of this report:

MolProbity : **FAILED**  
Mogul : 1.8.5 (274361), CSD as541be (2020)  
Xtrriage (Phenix) : 1.13  
EDS : **FAILED**  
buster-report : 1.1.7 (2018)  
Percentile statistics : 20191225.v01 (using entries in the PDB archive December 25th 2019)  
Ideal geometry (proteins) : Engh & Huber (2001)  
Ideal geometry (DNA, RNA) : Parkinson et al. (1996)  
Validation Pipeline (wwPDB-VP) : 2.35.1

## 1 Overall quality at a glance

The following experimental techniques were used to determine the structure:

*X-RAY DIFFRACTION*

The reported resolution of this entry is 1.94 Å.

There are no overall percentile quality scores available for this entry.

MolProbity and EDS failed to run properly - the sequence quality summary graphics cannot be shown.

## 2 Entry composition [i](#)

There are 5 unique types of molecules in this entry. The entry contains 11583 atoms, of which 5426 are hydrogens and 0 are deuteriums.

In the tables below, the ZeroOcc column contains the number of atoms modelled with zero occupancy, the AltConf column contains the number of residues with at least one atom in alternate conformation and the Trace column contains the number of residues modelled with at most 2 atoms.

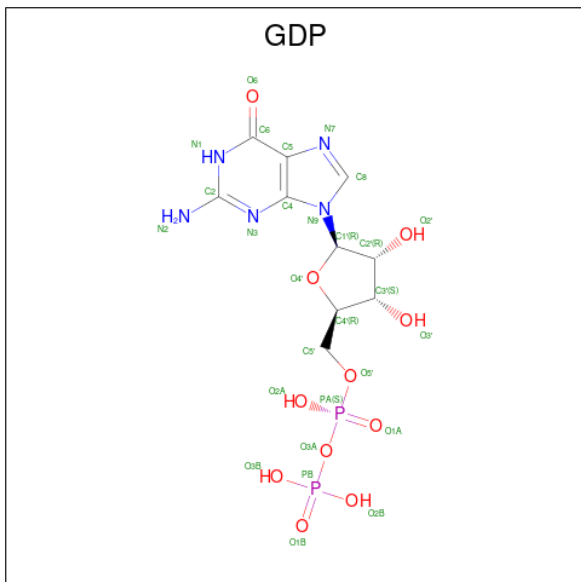
- Molecule 1 is a protein called GTPase KRas.

Mol	Chain	Residues	Atoms					ZeroOcc	AltConf	Trace	
			Total	C	H	N	O				S
1	A	169	2699	849	1344	232	269	5	64	0	0
1	B	168	2678	843	1333	230	267	5	64	1	0
1	C	170	2716	854	1352	233	272	5	64	1	0
1	D	170	2708	851	1349	233	270	5	64	0	0

There are 20 discrepancies between the modelled and reference sequences:

Chain	Residue	Modelled	Actual	Comment	Reference
A	0	GLY	-	expression tag	UNP P01116
A	12	CYS	GLY	variant	UNP P01116
A	51	SER	CYS	engineered mutation	UNP P01116
A	80	LEU	CYS	engineered mutation	UNP P01116
A	118	SER	CYS	engineered mutation	UNP P01116
B	0	GLY	-	expression tag	UNP P01116
B	12	CYS	GLY	variant	UNP P01116
B	51	SER	CYS	engineered mutation	UNP P01116
B	80	LEU	CYS	engineered mutation	UNP P01116
B	118	SER	CYS	engineered mutation	UNP P01116
C	0	GLY	-	expression tag	UNP P01116
C	12	CYS	GLY	variant	UNP P01116
C	51	SER	CYS	engineered mutation	UNP P01116
C	80	LEU	CYS	engineered mutation	UNP P01116
C	118	SER	CYS	engineered mutation	UNP P01116
D	0	GLY	-	expression tag	UNP P01116
D	12	CYS	GLY	variant	UNP P01116
D	51	SER	CYS	engineered mutation	UNP P01116
D	80	LEU	CYS	engineered mutation	UNP P01116
D	118	SER	CYS	engineered mutation	UNP P01116

- Molecule 2 is GUANOSINE-5'-DIPHOSPHATE (three-letter code: GDP) (formula:  $C_{10}H_{15}N_5O_{11}P_2$ ).

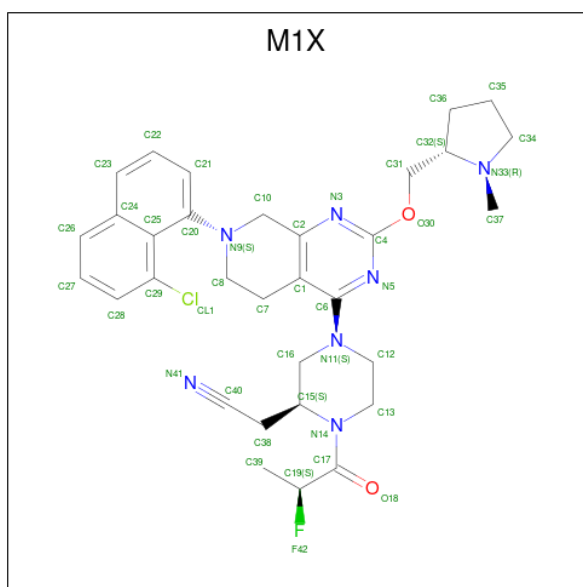


Mol	Chain	Residues	Atoms					ZeroOcc	AltConf	
			Total	C	H	N	O			P
2	A	1	Total	C	H	N	O	P	2	0
			40	10	12	5	11	2		
2	B	1	Total	C	H	N	O	P	2	0
			40	10	12	5	11	2		
2	C	1	Total	C	H	N	O	P	2	0
			40	10	12	5	11	2		
2	D	1	Total	C	H	N	O	P	2	0
			40	10	12	5	11	2		

- Molecule 3 is MAGNESIUM ION (three-letter code: MG) (formula: Mg).

Mol	Chain	Residues	Atoms		ZeroOcc	AltConf
			Total	Mg		
3	A	1	Total	Mg	0	0
			1	1		
3	B	1	Total	Mg	0	0
			1	1		
3	C	1	Total	Mg	0	0
			1	1		
3	D	1	Total	Mg	0	0
			1	1		

- Molecule 4 is {(2S)-4-[7-(8-chloronaphthalen-1-yl)-2-[[[(2S)-1-methylpyrrolidin-2-yl]methoxy]-5,6,7,8-tetrahydropyrido[3,4-d]pyrimidin-4-yl]-1-[(2S)-2-fluoropropanoyl]piperazin-2-yl}acetonitrile (three-letter code: M1X) (formula:  $C_{32}H_{37}ClFN_7O_2$ ) (labeled as "Ligand of Interest" by depositor).



Mol	Chain	Residues	Atoms					ZeroOcc	AltConf	
			Total	C	Cl	F	N			O
4	A	1	Total 43	C 32	Cl 1	F 1	N 7	O 2	0	0
4	B	1	Total 43	C 32	Cl 1	F 1	N 7	O 2	0	0
4	C	1	Total 43	C 32	Cl 1	F 1	N 7	O 2	0	0
4	D	1	Total 43	C 32	Cl 1	F 1	N 7	O 2	0	0

- Molecule 5 is water.

Mol	Chain	Residues	Atoms		ZeroOcc	AltConf
5	A	108	Total 108	O 108	0	0
5	B	125	Total 125	O 125	0	0
5	C	130	Total 130	O 130	0	0
5	D	83	Total 83	O 83	0	0

MolProbity and EDS failed to run properly - this section is therefore empty.

### 3 Data and refinement statistics i

EDS failed to run properly - this section is therefore incomplete.

Property	Value	Source
Space group	P 1 21 1	Depositor
Cell constants a, b, c, $\alpha$ , $\beta$ , $\gamma$	74.92Å 61.80Å 76.05Å 90.00° 111.37° 90.00°	Depositor
Resolution (Å)	28.32 – 1.94	Depositor
% Data completeness (in resolution range)	96.3 (28.32-1.94)	Depositor
$R_{merge}$	0.08	Depositor
$R_{sym}$	(Not available)	Depositor
$\langle I/\sigma(I) \rangle$ <sup>1</sup>	4.35 (at 1.93Å)	Xtriage
Refinement program	REFMAC 5.8.0253	Depositor
R, $R_{free}$	0.175 , 0.222	Depositor
Wilson B-factor (Å <sup>2</sup> )	14.9	Xtriage
Anisotropy	0.464	Xtriage
L-test for twinning <sup>2</sup>	$\langle  L  \rangle = 0.49$ , $\langle L^2 \rangle = 0.33$	Xtriage
Estimated twinning fraction	0.017 for l,-k,h	Xtriage
Total number of atoms	11583	wwPDB-VP
Average B, all atoms (Å <sup>2</sup> )	22.0	wwPDB-VP

Xtriage's analysis on translational NCS is as follows: *The largest off-origin peak in the Patterson function is 16.86% of the height of the origin peak. No significant pseudotranslation is detected.*

<sup>1</sup>Intensities estimated from amplitudes.

<sup>2</sup>Theoretical values of  $\langle |L| \rangle$ ,  $\langle L^2 \rangle$  for acentric reflections are 0.5, 0.333 respectively for untwinned datasets, and 0.375, 0.2 for perfectly twinned datasets.

## 4 Model quality [i](#)

### 4.1 Standard geometry [i](#)

MolProbity failed to run properly - this section is therefore empty.

### 4.2 Too-close contacts [i](#)

MolProbity failed to run properly - this section is therefore empty.

### 4.3 Torsion angles [i](#)

#### 4.3.1 Protein backbone [i](#)

MolProbity failed to run properly - this section is therefore empty.

#### 4.3.2 Protein sidechains [i](#)

MolProbity failed to run properly - this section is therefore empty.

#### 4.3.3 RNA [i](#)

MolProbity failed to run properly - this section is therefore empty.

### 4.4 Non-standard residues in protein, DNA, RNA chains [i](#)

There are no non-standard protein/DNA/RNA residues in this entry.

### 4.5 Carbohydrates [i](#)

There are no monosaccharides in this entry.

### 4.6 Ligand geometry [i](#)

Of 12 ligands modelled in this entry, 4 are monoatomic - leaving 8 for Mogul analysis.

In the following table, the Counts columns list the number of bonds (or angles) for which Mogul statistics could be retrieved, the number of bonds (or angles) that are observed in the model and the number of bonds (or angles) that are defined in the Chemical Component Dictionary. The Link column lists molecule types, if any, to which the group is linked. The Z score for a bond

length (or angle) is the number of standard deviations the observed value is removed from the expected value. A bond length (or angle) with  $|Z| > 2$  is considered an outlier worth inspection. RMSZ is the root-mean-square of all Z scores of the bond lengths (or angles).

Mol	Type	Chain	Res	Link	Bond lengths			Bond angles		
					Counts	RMSZ	# Z  > 2	Counts	RMSZ	# Z  > 2
2	GDP	A	201	3	24,30,30	0.98	1 (4%)	30,47,47	1.09	2 (6%)
4	M1X	B	203	1	47,48,48	1.53	9 (19%)	53,69,69	2.09	15 (28%)
4	M1X	D	203	1	47,48,48	1.65	8 (17%)	53,69,69	2.19	15 (28%)
2	GDP	C	201	3	24,30,30	1.33	3 (12%)	30,47,47	1.10	2 (6%)
2	GDP	B	201	3	24,30,30	1.13	1 (4%)	30,47,47	1.33	4 (13%)
2	GDP	D	201	3	24,30,30	0.71	0	30,47,47	1.23	4 (13%)
4	M1X	C	203	1	47,48,48	1.45	8 (17%)	53,69,69	2.00	18 (33%)
4	M1X	A	203	1	47,48,48	1.37	7 (14%)	53,69,69	1.92	14 (26%)

In the following table, the Chirals column lists the number of chiral outliers, the number of chiral centers analysed, the number of these observed in the model and the number defined in the Chemical Component Dictionary. Similar counts are reported in the Torsion and Rings columns. '-' means no outliers of that kind were identified.

Mol	Type	Chain	Res	Link	Chirals	Torsions	Rings
2	GDP	A	201	3	-	1/12/32/32	0/3/3/3
4	M1X	B	203	1	-	5/23/56/56	0/6/6/6
4	M1X	D	203	1	-	2/23/56/56	0/6/6/6
2	GDP	C	201	3	-	0/12/32/32	0/3/3/3
2	GDP	B	201	3	-	3/12/32/32	0/3/3/3
2	GDP	D	201	3	-	1/12/32/32	0/3/3/3
4	M1X	C	203	1	-	2/23/56/56	0/6/6/6
4	M1X	A	203	1	-	4/23/56/56	0/6/6/6

All (37) bond length outliers are listed below:

Mol	Chain	Res	Type	Atoms	Z	Observed(Å)	Ideal(Å)
4	D	203	M1X	F42-C19	-4.82	1.33	1.40
4	B	203	M1X	O30-C4	4.66	1.39	1.34
4	D	203	M1X	O30-C4	4.26	1.39	1.34
4	C	203	M1X	C32-N33	4.03	1.53	1.48
4	B	203	M1X	F42-C19	-3.95	1.34	1.40
4	D	203	M1X	C32-N33	3.95	1.53	1.48
4	C	203	M1X	C6-N11	3.28	1.45	1.37
4	D	203	M1X	C6-N11	3.20	1.45	1.37
4	A	203	M1X	F42-C19	-3.17	1.36	1.40

*Continued on next page...*



Continued from previous page...

Mol	Chain	Res	Type	Atoms	Z	Observed(Å)	Ideal(Å)
4	D	203	M1X	C38-C40	3.10	1.52	1.46
2	C	201	GDP	C2'-C1'	-2.99	1.49	1.53
4	A	203	M1X	C6-N11	2.98	1.45	1.37
2	C	201	GDP	C6-N1	-2.95	1.33	1.37
4	A	203	M1X	O30-C4	2.91	1.37	1.34
4	A	203	M1X	C37-N33	2.87	1.52	1.46
4	C	203	M1X	C13-N14	2.80	1.51	1.47
2	B	201	GDP	O4'-C1'	2.70	1.44	1.41
4	B	203	M1X	C37-N33	2.63	1.52	1.46
4	D	203	M1X	C37-N33	2.62	1.52	1.46
4	A	203	M1X	C32-N33	2.58	1.51	1.48
4	A	203	M1X	C39-C19	2.56	1.54	1.50
4	C	203	M1X	C7-C1	2.55	1.55	1.51
4	C	203	M1X	C28-C29	2.46	1.42	1.36
4	B	203	M1X	C21-C20	2.32	1.42	1.38
4	B	203	M1X	C34-N33	2.32	1.53	1.46
4	A	203	M1X	C34-N33	2.25	1.53	1.46
2	C	201	GDP	O6-C6	2.22	1.27	1.23
4	D	203	M1X	C28-C29	2.13	1.41	1.36
4	B	203	M1X	C39-C19	2.13	1.53	1.50
4	C	203	M1X	C37-N33	2.12	1.51	1.46
4	B	203	M1X	C22-C23	2.09	1.41	1.36
4	C	203	M1X	C22-C23	2.09	1.41	1.36
4	B	203	M1X	C31-C32	2.05	1.57	1.52
4	B	203	M1X	C32-N33	2.05	1.51	1.48
4	D	203	M1X	C34-N33	2.04	1.52	1.46
2	A	201	GDP	C6-N1	-2.03	1.34	1.37
4	C	203	M1X	C39-C19	2.02	1.53	1.50

All (74) bond angle outliers are listed below:

Mol	Chain	Res	Type	Atoms	Z	Observed(°)	Ideal(°)
4	D	203	M1X	C10-N9-C20	-6.79	105.64	117.38
4	D	203	M1X	F42-C19-C39	6.71	114.37	108.70
4	B	203	M1X	C10-N9-C20	-6.45	106.23	117.38
4	A	203	M1X	C10-N9-C20	-6.26	106.55	117.38
4	B	203	M1X	C29-C25-C24	6.06	117.71	114.93
4	C	203	M1X	C10-N9-C20	-5.24	108.31	117.38
4	C	203	M1X	C6-C1-C2	5.04	118.33	115.80
4	A	203	M1X	C29-C25-C24	4.67	117.07	114.93
4	D	203	M1X	C21-C20-N9	-4.13	116.54	122.18
4	D	203	M1X	C6-C1-C2	3.81	117.71	115.80

Continued on next page...

*Continued from previous page...*

Mol	Chain	Res	Type	Atoms	Z	Observed(°)	Ideal(°)
4	C	203	M1X	C39-C19-C17	-3.81	105.39	110.88
4	B	203	M1X	C12-C13-N14	-3.79	103.40	110.46
4	C	203	M1X	C1-C2-N3	-3.76	120.32	123.49
4	B	203	M1X	C1-C2-N3	-3.71	120.36	123.49
4	D	203	M1X	C7-C8-N9	-3.64	98.83	110.63
4	A	203	M1X	C8-C7-C1	-3.63	105.66	111.63
4	A	203	M1X	C21-C20-N9	-3.51	117.39	122.18
4	A	203	M1X	F42-C19-C39	3.39	111.57	108.70
4	D	203	M1X	C26-C24-C23	-3.27	115.53	123.19
4	A	203	M1X	C7-C1-C2	3.23	124.10	121.08
4	D	203	M1X	C7-C1-C2	-3.22	118.07	121.08
4	B	203	M1X	C6-C1-C2	3.16	117.38	115.80
4	C	203	M1X	C12-N11-C6	-3.10	108.27	119.05
4	B	203	M1X	C21-C20-N9	-3.09	117.97	122.18
4	C	203	M1X	C13-N14-C15	2.99	119.53	115.36
2	B	201	GDP	O6-C6-N1	2.94	124.12	120.65
4	D	203	M1X	C26-C24-C25	2.93	124.14	118.27
4	B	203	M1X	F42-C19-C39	2.90	111.15	108.70
4	A	203	M1X	C31-O30-C4	2.87	121.62	117.83
4	C	203	M1X	C10-C2-N3	2.85	121.50	116.44
4	C	203	M1X	C31-C32-N33	-2.72	104.52	111.33
4	B	203	M1X	C31-O30-C4	2.72	121.42	117.83
2	B	201	GDP	O6-C6-C5	-2.67	119.16	124.37
4	D	203	M1X	C28-C29-CL1	-2.66	112.05	118.57
4	D	203	M1X	C1-C6-N5	-2.64	118.54	122.61
2	C	201	GDP	C8-N7-C5	2.62	107.98	102.99
4	C	203	M1X	C10-C2-C1	-2.61	118.10	121.38
4	D	203	M1X	C1-C2-N3	-2.60	121.29	123.49
2	C	201	GDP	O3B-PB-O2B	2.56	117.44	107.64
4	B	203	M1X	C15-C16-N11	2.56	112.91	109.57
4	C	203	M1X	C12-N11-C16	2.55	119.98	112.55
4	C	203	M1X	C7-C1-C2	-2.54	118.70	121.08
4	C	203	M1X	C7-C8-N9	-2.53	102.42	110.63
4	A	203	M1X	C35-C36-C32	2.53	110.56	104.68
4	B	203	M1X	C31-C32-N33	-2.47	105.16	111.33
4	C	203	M1X	C26-C27-C28	-2.43	117.11	120.99
4	C	203	M1X	C28-C29-CL1	-2.43	112.62	118.57
4	A	203	M1X	N3-C4-N5	-2.43	122.95	127.63
4	B	203	M1X	C26-C24-C23	-2.42	117.54	123.19
2	D	201	GDP	C8-N7-C5	2.41	107.59	102.99
2	B	201	GDP	O4'-C4'-C3'	2.39	109.84	105.11
4	B	203	M1X	C13-C12-N11	-2.38	106.08	110.70

*Continued on next page...*

*Continued from previous page...*

Mol	Chain	Res	Type	Atoms	Z	Observed(°)	Ideal(°)
4	C	203	M1X	C21-C20-N9	-2.37	118.95	122.18
4	D	203	M1X	N3-C4-N5	-2.31	123.18	127.63
4	A	203	M1X	C12-N11-C16	2.30	119.26	112.55
2	D	201	GDP	O3'-C3'-C4'	-2.29	104.41	111.05
4	B	203	M1X	C28-C29-CL1	-2.28	112.99	118.57
4	D	203	M1X	C16-N11-C6	-2.27	111.15	119.06
2	A	201	GDP	O2A-PA-O1A	2.22	123.22	112.24
4	A	203	M1X	C16-N11-C6	-2.22	111.33	119.06
4	B	203	M1X	N3-C4-N5	-2.22	123.37	127.63
4	D	203	M1X	C31-C32-N33	-2.20	105.84	111.33
4	C	203	M1X	N5-C6-N11	2.20	120.37	116.80
2	A	201	GDP	C8-N7-C5	2.19	107.17	102.99
4	C	203	M1X	C27-C26-C24	2.19	123.86	120.44
2	D	201	GDP	O5'-PA-O1A	2.15	117.45	109.07
2	B	201	GDP	PA-O3A-PB	-2.14	125.48	132.83
4	B	203	M1X	C7-C8-N9	-2.13	103.74	110.63
4	C	203	M1X	F42-C19-C39	2.12	110.49	108.70
2	D	201	GDP	O2'-C2'-C3'	2.06	118.50	111.82
4	A	203	M1X	O18-C17-N14	-2.06	117.71	121.38
4	A	203	M1X	C13-N14-C15	2.04	118.20	115.36
4	D	203	M1X	C12-N11-C6	-2.01	112.05	119.05
4	A	203	M1X	C26-C24-C23	-2.01	118.49	123.19

There are no chirality outliers.

All (18) torsion outliers are listed below:

Mol	Chain	Res	Type	Atoms
4	A	203	M1X	N14-C17-C19-F42
4	B	203	M1X	N14-C17-C19-F42
4	C	203	M1X	N14-C17-C19-F42
4	C	203	M1X	O18-C17-N14-C15
4	D	203	M1X	N14-C17-C19-F42
4	B	203	M1X	C21-C20-N9-C10
4	A	203	M1X	C21-C20-N9-C8
4	B	203	M1X	C21-C20-N9-C8
2	A	201	GDP	PA-O3A-PB-O2B
2	D	201	GDP	PA-O3A-PB-O3B
4	B	203	M1X	C25-C20-N9-C10
4	A	203	M1X	C25-C20-N9-C8
4	A	203	M1X	C21-C20-N9-C10
4	B	203	M1X	C25-C20-N9-C8
2	B	201	GDP	PA-O3A-PB-O2B

*Continued on next page...*

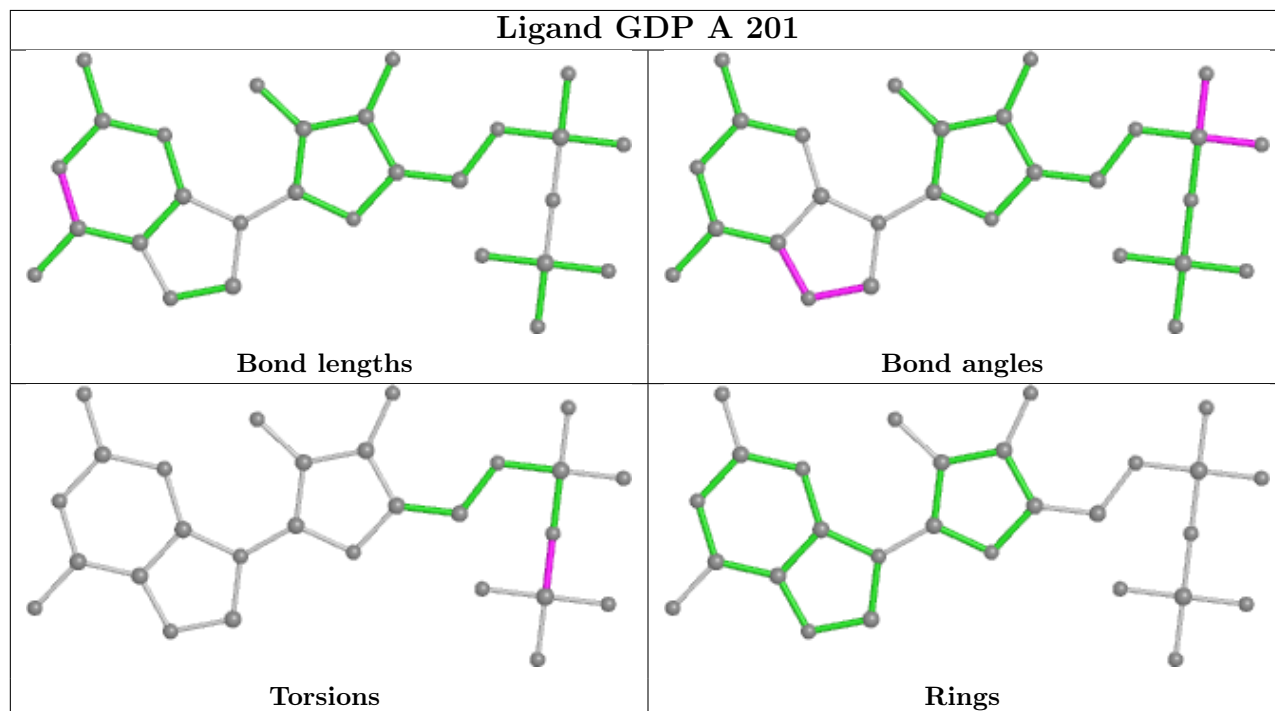
Continued from previous page...

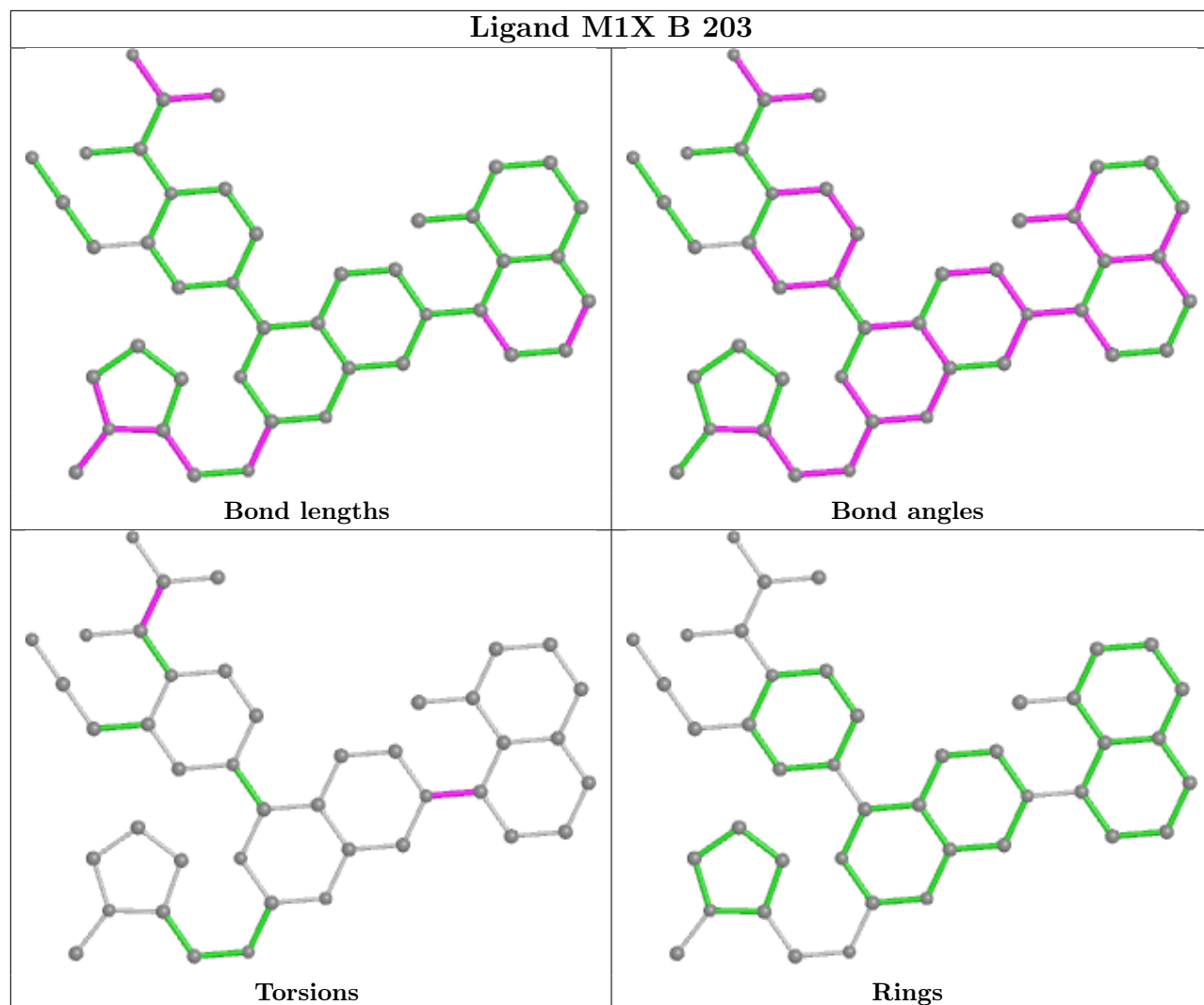
Mol	Chain	Res	Type	Atoms
2	B	201	GDP	PA-O3A-PB-O3B
4	D	203	M1X	C21-C20-N9-C10
2	B	201	GDP	PA-O3A-PB-O1B

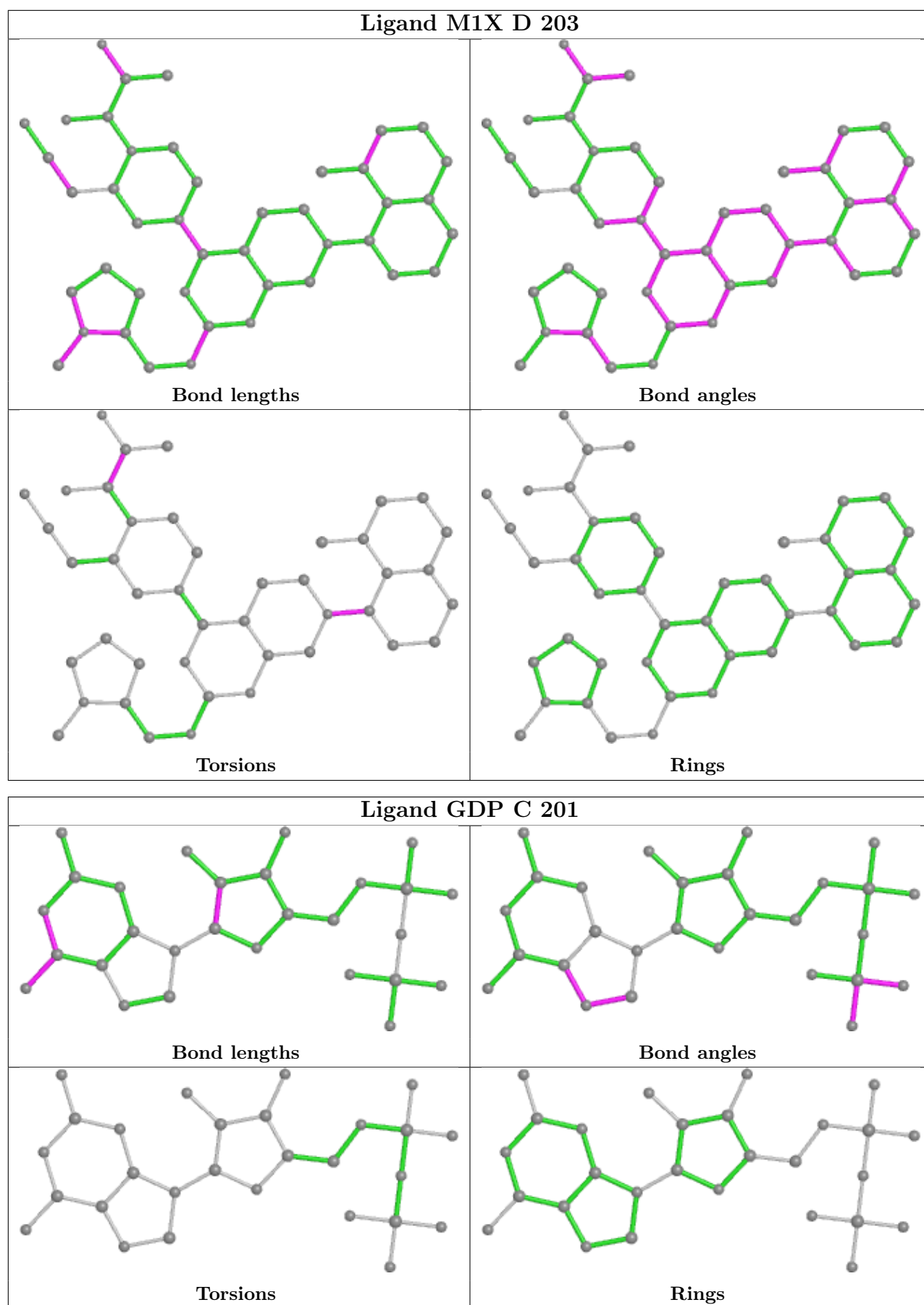
There are no ring outliers.

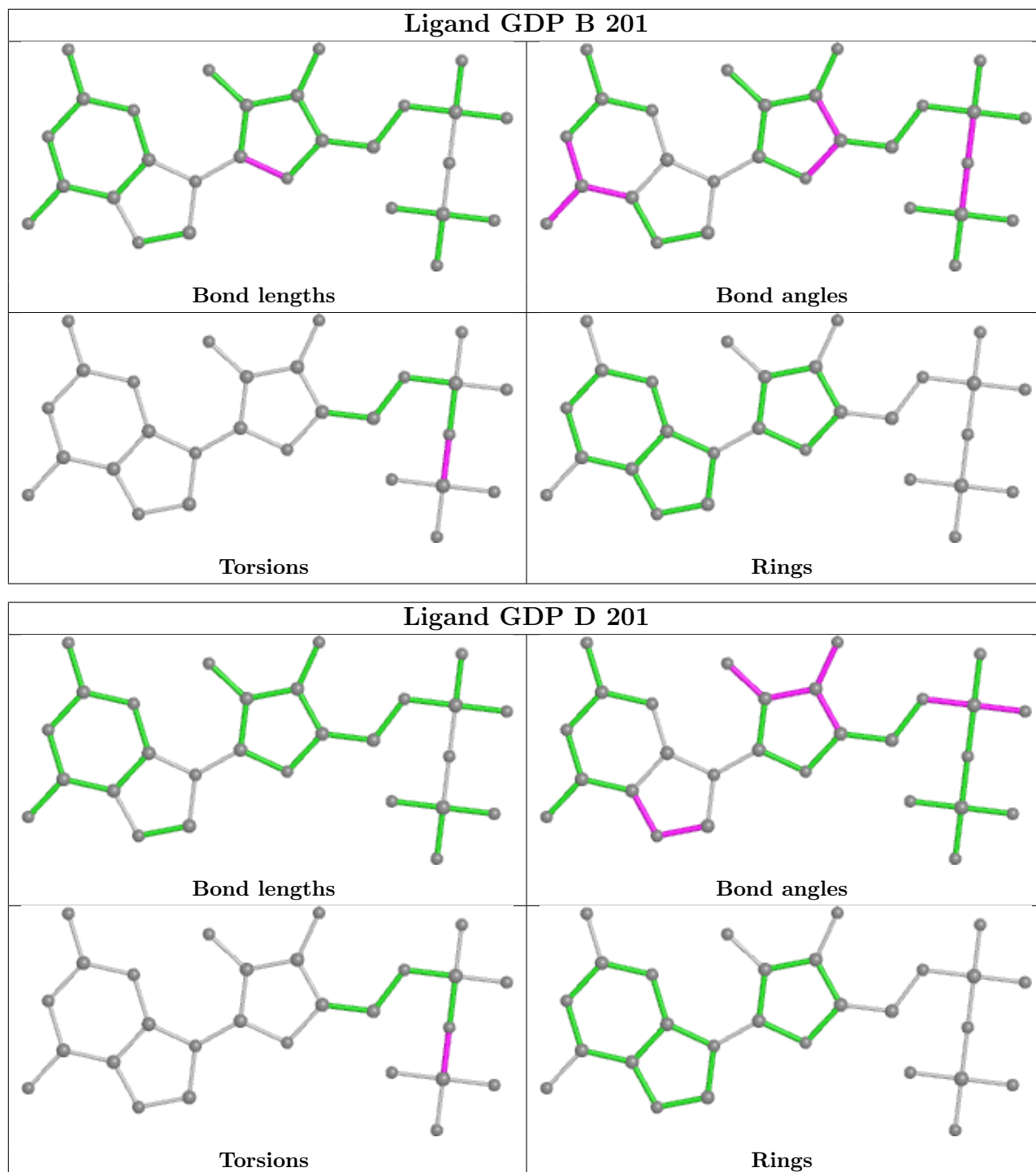
No monomer is involved in short contacts.

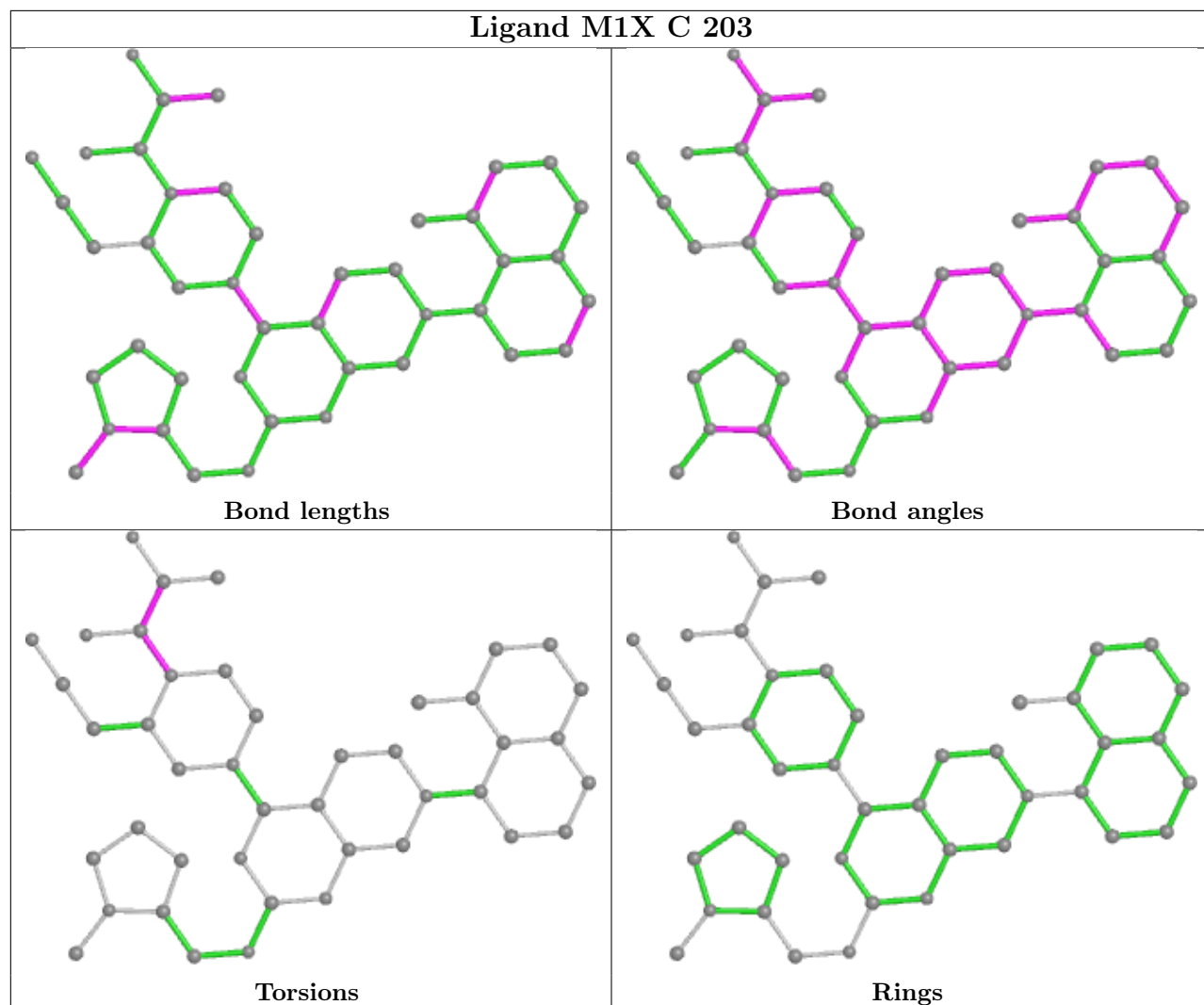
The following is a two-dimensional graphical depiction of Mogul quality analysis of bond lengths, bond angles, torsion angles, and ring geometry for all instances of the Ligand of Interest. In addition, ligands with molecular weight > 250 and outliers as shown on the validation Tables will also be included. For torsion angles, if less than 5% of the Mogul distribution of torsion angles is within 10 degrees of the torsion angle in question, then that torsion angle is considered an outlier. Any bond that is central to one or more torsion angles identified as an outlier by Mogul will be highlighted in the graph. For rings, the root-mean-square deviation (RMSD) between the ring in question and similar rings identified by Mogul is calculated over all ring torsion angles. If the average RMSD is greater than 60 degrees and the minimal RMSD between the ring in question and any Mogul-identified rings is also greater than 60 degrees, then that ring is considered an outlier. The outliers are highlighted in purple. The color gray indicates Mogul did not find sufficient equivalents in the CSD to analyse the geometry.



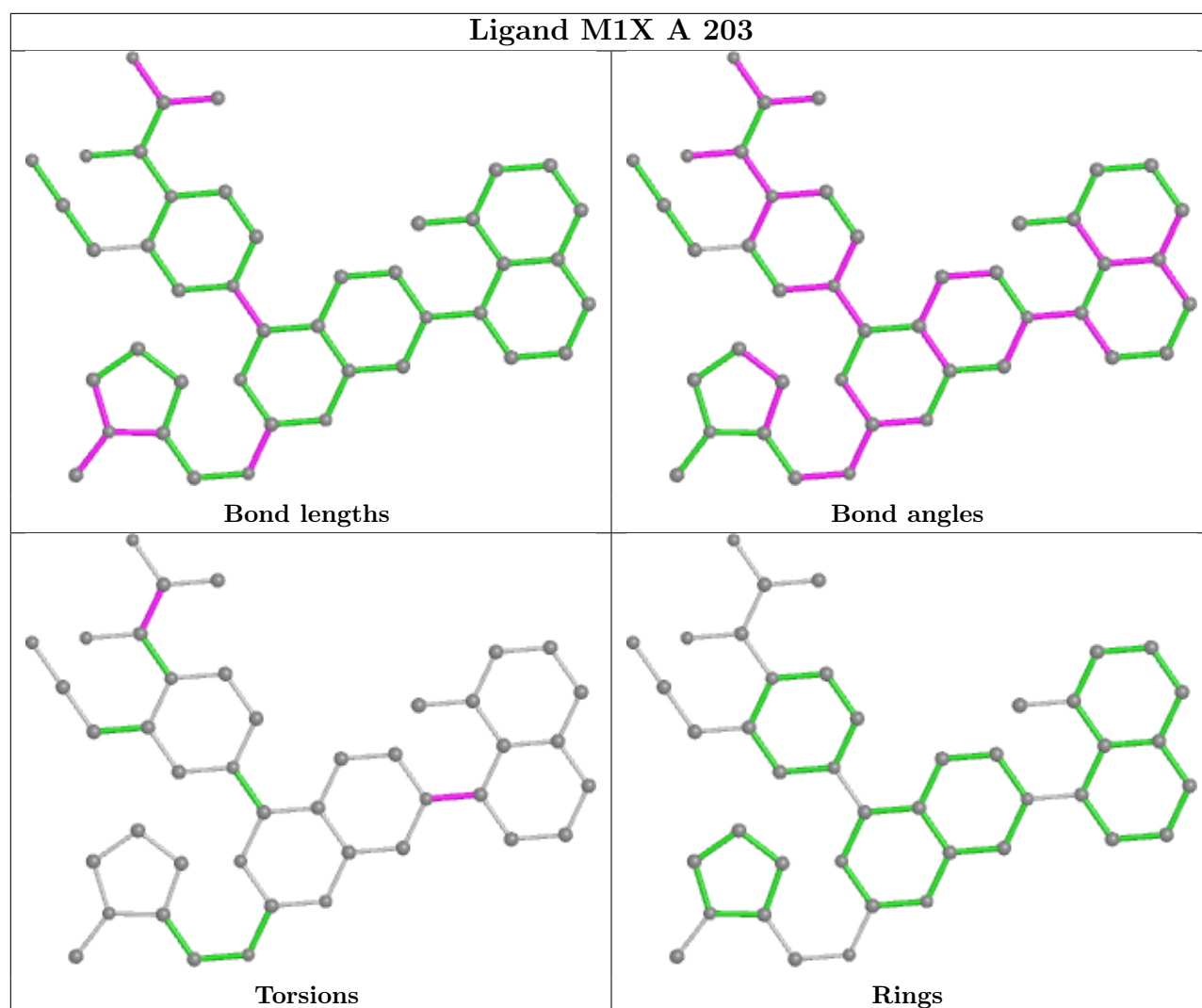












#### 4.7 Other polymers [\(i\)](#)

There are no such residues in this entry.

#### 4.8 Polymer linkage issues [\(i\)](#)

There are no chain breaks in this entry.

## 5 Fit of model and data

### 5.1 Protein, DNA and RNA chains

EDS failed to run properly - this section is therefore empty.

### 5.2 Non-standard residues in protein, DNA, RNA chains

EDS failed to run properly - this section is therefore empty.

### 5.3 Carbohydrates

EDS failed to run properly - this section is therefore empty.

### 5.4 Ligands

EDS failed to run properly - this section is therefore empty.

### 5.5 Other polymers

EDS failed to run properly - this section is therefore empty.