



Full wwPDB X-ray Structure Validation Report ⓘ

Dec 8, 2023 – 06:15 am GMT

PDB ID : 1UZY
Title : Erythrina crystagalli lectin
Authors : Turton, K.; Natesh, R.; Thiyagarajan, N.; Chaddock, J.A.; Acharya, K.R.
Deposited on : 2004-03-19
Resolution : 2.00 Å(reported)

This is a Full wwPDB X-ray Structure Validation Report for a publicly released PDB entry.

We welcome your comments at validation@mail.wwpdb.org

A user guide is available at

<https://www.wwpdb.org/validation/2017/XrayValidationReportHelp>

with specific help available everywhere you see the ⓘ symbol.

The types of validation reports are described at

<http://www.wwpdb.org/validation/2017/FAQs#types>.

The following versions of software and data (see [references ⓘ](#)) were used in the production of this report:

MolProbity : 4.02b-467
Mogul : 1.8.4, CSD as541be (2020)
Xtrriage (Phenix) : **NOT EXECUTED**
EDS : **NOT EXECUTED**
Percentile statistics : 20191225.v01 (using entries in the PDB archive December 25th 2019)
Ideal geometry (proteins) : Engh & Huber (2001)
Ideal geometry (DNA, RNA) : Parkinson et al. (1996)
Validation Pipeline (wwPDB-VP) : 2.36

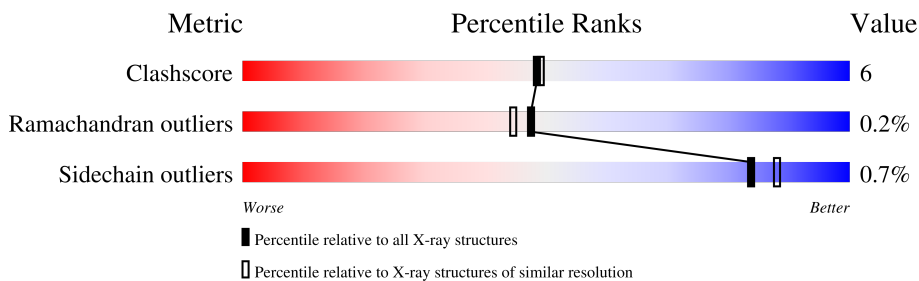
1 Overall quality at a glance i

The following experimental techniques were used to determine the structure:

X-RAY DIFFRACTION

The reported resolution of this entry is 2.00 Å.

Percentile scores (ranging between 0-100) for global validation metrics of the entry are shown in the following graphic. The table shows the number of entries on which the scores are based.



Metric	Whole archive (#Entries)	Similar resolution (#Entries, resolution range(Å))
Clashscore	141614	9178 (2.00-2.00)
Ramachandran outliers	138981	9054 (2.00-2.00)
Sidechain outliers	138945	9053 (2.00-2.00)

The table below summarises the geometric issues observed across the polymeric chains and their fit to the electron density. The red, orange, yellow and green segments of the lower bar indicate the fraction of residues that contain outliers for ≥ 3 , 2, 1 and 0 types of geometric quality criteria respectively. A grey segment represents the fraction of residues that are not modelled. The numeric value for each fraction is indicated below the corresponding segment, with a dot representing fractions $\leq 5\%$.

Note EDS was not executed.

Mol	Chain	Length	Quality of chain
1	A	242	
1	B	242	
2	C	3	
3	D	2	
3	F	2	
4	E	6	

2 Entry composition [i](#)

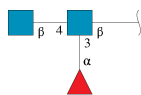
There are 8 unique types of molecules in this entry. The entry contains 4370 atoms, of which 0 are hydrogens and 0 are deuteriums.

In the tables below, the ZeroOcc column contains the number of atoms modelled with zero occupancy, the AltConf column contains the number of residues with at least one atom in alternate conformation and the Trace column contains the number of residues modelled with at most 2 atoms.

- Molecule 1 is a protein called Lectin.

Mol	Chain	Residues	Atoms					ZeroOcc	AltConf	Trace
			Total	C	N	O	S			
1	A	239	Total	C	N	O	S	0	0	1
			1849	1184	301	361	3			
1	B	239	Total	C	N	O	S	0	0	1
			1847	1184	301	359	3			

- Molecule 2 is an oligosaccharide called alpha-L-fucopyranose-(1-3)-[2-acetamido-2-deoxy-beta-D-glucopyranose-(1-4)]2-acetamido-2-deoxy-beta-D-glucopyranose.



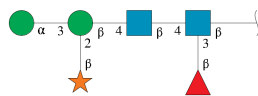
Mol	Chain	Residues	Atoms				ZeroOcc	AltConf	Trace
			Total	C	N	O			
2	C	3	Total	C	N	O	0	0	0
			38	22	2	14			

- Molecule 3 is an oligosaccharide called beta-D-galactopyranose-(1-4)-beta-D-glucopyranose.



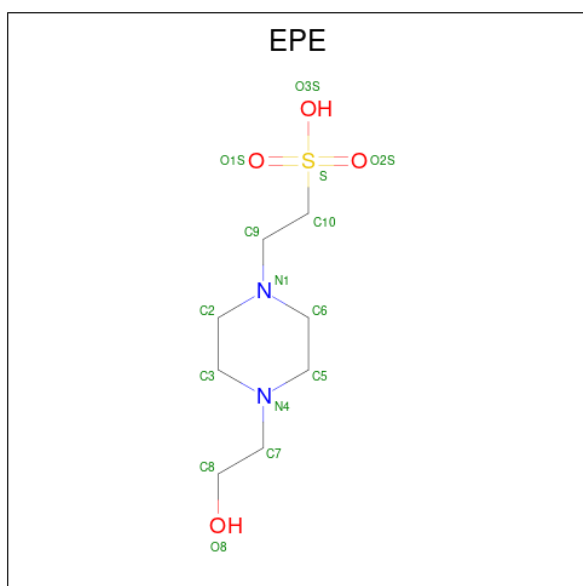
Mol	Chain	Residues	Atoms			ZeroOcc	AltConf	Trace
			Total	C	O			
3	D	2	Total	C	O	0	0	0
			23	12	11			
3	F	2	Total	C	O	0	0	0
			23	12	11			

- Molecule 4 is an oligosaccharide called beta-D-xylopyranose-(1-2)-[alpha-D-mannopyranose-(1-3)]beta-D-mannopyranose-(1-4)-2-acetamido-2-deoxy-beta-D-glucopyranose-(1-4)-[beta-L-fucopyranose-(1-3)]2-acetamido-2-deoxy-beta-D-glucopyranose.



Mol	Chain	Residues	Atoms				ZeroOcc	AltConf	Trace
			Total	C	N	O			
4	E	6	69	39	2	28	0	0	0

- Molecule 5 is 4-(2-HYDROXYETHYL)-1-PIPERAZINE ETHANESULFONIC ACID (three-letter code: EPE) (formula: C₈H₁₈N₂O₄S).



Mol	Chain	Residues	Atoms					ZeroOcc	AltConf
			Total	C	N	O	S		
5	A	1	15	8	2	4	1	0	0
5	A	1	15	8	2	4	1	0	0
5	B	1	15	8	2	4	1	0	0
5	B	1	15	8	2	4	1	0	0

- Molecule 6 is CALCIUM ION (three-letter code: CA) (formula: Ca).

Mol	Chain	Residues	Atoms		ZeroOcc	AltConf
			Total	Ca		
6	A	1	1	1	0	0
6	B	1	1	1	0	0

- Molecule 7 is MANGANESE (II) ION (three-letter code: MN) (formula: Mn).

Mol	Chain	Residues	Atoms		ZeroOcc	AltConf
7	A	1	Total 1	Mn 1	0	0
7	B	1	Total 1	Mn 1	0	0

- Molecule 8 is water.

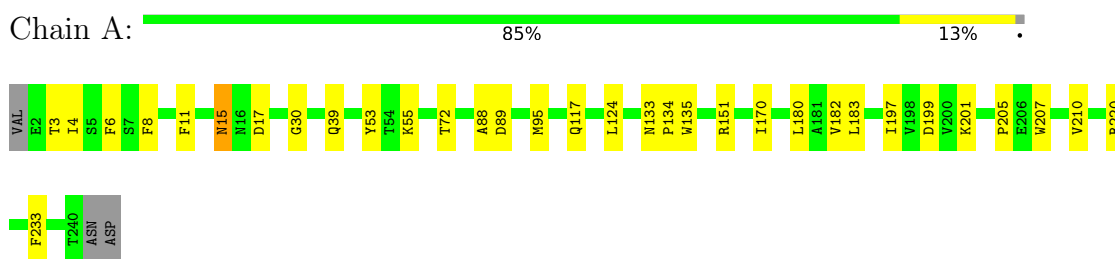
Mol	Chain	Residues	Atoms		ZeroOcc	AltConf
8	A	221	Total 221	O 221	0	0
8	B	236	Total 236	O 236	0	0

3 Residue-property plots [i](#)

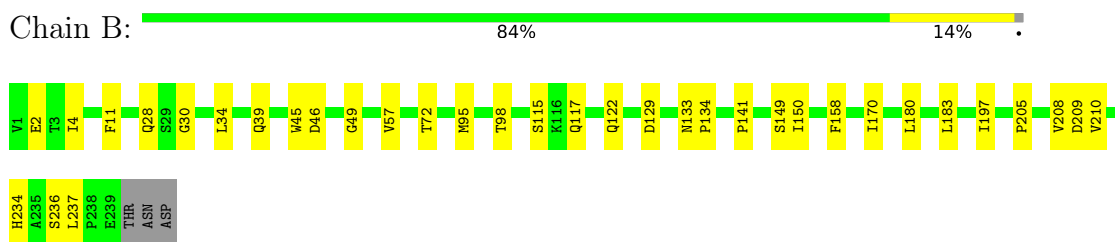
These plots are drawn for all protein, RNA, DNA and oligosaccharide chains in the entry. The first graphic for a chain summarises the proportions of the various outlier classes displayed in the second graphic. The second graphic shows the sequence view annotated by issues in geometry. Residues are color-coded according to the number of geometric quality criteria for which they contain at least one outlier: green = 0, yellow = 1, orange = 2 and red = 3 or more. Stretches of 2 or more consecutive residues without any outlier are shown as a green connector. Residues present in the sample, but not in the model, are shown in grey.

Note EDS was not executed.

- Molecule 1: Lectin



- Molecule 1: Lectin



- Molecule 2: alpha-L-fucopyranose-(1-3)-[2-acetamido-2-deoxy-beta-D-glucopyranose-(1-4)]2-acetamido-2-deoxy-beta-D-glucopyranose



- Molecule 3: beta-D-galactopyranose-(1-4)-beta-D-glucopyranose



- Molecule 3: beta-D-galactopyranose-(1-4)-beta-D-glucopyranose



BGC1
GAL2

- Molecule 4: beta-D-xylopyranose-(1-2)-[alpha-D-mannopyranose-(1-3)]beta-D-mannopyranose-(1-4)-2-acetamido-2-deoxy-beta-D-glucopyranose-(1-4)-[beta-L-fucopyranose-(1-3)]2-acetamido-2-deoxy-beta-D-glucopyranose

Chain E:  50% 33% 17%

MAG1
MAG2
BMA3
XYP4
MAN5
FUL6

4 Data and refinement statistics

Xtrriage (Phenix) and EDS were not executed - this section is therefore incomplete.

Property	Value	Source
Space group	P 65	Depositor
Cell constants a, b, c, α , β , γ	134.02Å 134.02Å 81.64Å 90.00° 90.00° 120.00°	Depositor
Resolution (Å)	40.00 – 2.00	Depositor
% Data completeness (in resolution range)	97.0 (40.00-2.00)	Depositor
R_{merge}	0.07	Depositor
R_{sym}	(Not available)	Depositor
Refinement program	CNS 1.0	Depositor
R, R_{free}	0.189 , 0.209	Depositor
Estimated twinning fraction	No twinning to report.	Xtrriage
Total number of atoms	4370	wwPDB-VP
Average B, all atoms (Å ²)	28.0	wwPDB-VP

5 Model quality [i](#)

5.1 Standard geometry [i](#)

Bond lengths and bond angles in the following residue types are not validated in this section: NAG, GAL, MAN, XYP, FUL, BGC, CA, BMA, FUC, EPE, MN

The Z score for a bond length (or angle) is the number of standard deviations the observed value is removed from the expected value. A bond length (or angle) with $|Z| > 5$ is considered an outlier worth inspection. RMSZ is the root-mean-square of all Z scores of the bond lengths (or angles).

Mol	Chain	Bond lengths		Bond angles	
		RMSZ	# Z >5	RMSZ	# Z >5
1	A	0.35	0/1900	0.66	0/2599
1	B	0.35	0/1898	0.65	0/2597
All	All	0.35	0/3798	0.66	0/5196

There are no bond length outliers.

There are no bond angle outliers.

There are no chirality outliers.

There are no planarity outliers.

5.2 Too-close contacts [i](#)

In the following table, the Non-H and H(model) columns list the number of non-hydrogen atoms and hydrogen atoms in the chain respectively. The H(added) column lists the number of hydrogen atoms added and optimized by MolProbity. The Clashes column lists the number of clashes within the asymmetric unit, whereas Symm-Clashes lists symmetry-related clashes.

Mol	Chain	Non-H	H(model)	H(added)	Clashes	Symm-Clashes
1	A	1849	0	1780	20	0
1	B	1847	0	1786	25	0
2	C	38	0	34	1	0
3	D	23	0	21	0	0
3	F	23	0	21	0	0
4	E	69	0	51	1	0
5	A	30	0	36	0	0
5	B	30	0	36	3	0
6	A	1	0	0	0	0
6	B	1	0	0	0	0
7	A	1	0	0	0	0

Continued on next page...

Continued from previous page...

Mol	Chain	Non-H	H(model)	H(added)	Clashes	Symm-Clashes
7	B	1	0	0	0	0
8	A	221	0	0	1	0
8	B	236	0	0	0	0
All	All	4370	0	3765	46	0

The all-atom clashscore is defined as the number of clashes found per 1000 atoms (including hydrogen atoms). The all-atom clashscore for this structure is 6.

All (46) close contacts within the same asymmetric unit are listed below, sorted by their clash magnitude.

Atom-1	Atom-2	Interatomic distance (Å)	Clash overlap (Å)
1:A:11:PHE:O	1:A:30:GLY:HA2	1.91	0.69
1:B:45:TRP:NE1	5:B:1240:EPE:H101	2.09	0.68
1:B:2:GLU:HB3	1:B:237:LEU:HB3	1.76	0.67
1:B:117:GLN:HA	1:B:149:SER:HB2	1.80	0.62
1:B:11:PHE:O	1:B:30:GLY:HA2	2.00	0.61
2:C:2:FUC:H3	2:C:3:NAG:O6	2.02	0.59
1:A:197:ILE:HD11	1:B:197:ILE:HD11	1.86	0.57
1:B:95:MET:HG2	1:B:210:VAL:HG12	1.88	0.56
1:A:180:LEU:HD21	1:A:182:VAL:HG23	1.88	0.55
1:A:180:LEU:C	1:A:180:LEU:HD23	2.28	0.55
1:A:95:MET:HG2	1:A:210:VAL:HG12	1.89	0.53
1:B:72:THR:HG22	1:B:170:ILE:HB	1.90	0.52
1:A:183:LEU:C	1:A:183:LEU:HD23	2.31	0.52
1:B:39:GLN:H	1:B:39:GLN:CD	2.14	0.51
1:B:141:PRO:HG2	1:B:158:PHE:O	2.13	0.49
1:B:115:SER:HA	1:B:150:ILE:HG22	1.95	0.49
1:A:205:PRO:HG2	1:A:207:TRP:O	2.14	0.47
1:B:45:TRP:HE1	5:B:1240:EPE:H101	1.79	0.47
1:B:180:LEU:C	1:B:180:LEU:HD12	2.34	0.46
1:A:220:ARG:HD3	8:A:2085:HOH:O	2.15	0.46
1:B:4:ILE:HG21	1:B:57:VAL:HG13	1.98	0.46
1:A:135:TRP:HB2	1:A:151:ARG:HG2	1.98	0.45
1:A:199:ASP:OD1	1:A:201:LYS:HB2	2.16	0.45
1:A:6:PHE:CE2	1:A:233:PHE:HB3	2.51	0.45
1:B:133:ASN:HB3	1:B:134:PRO:CD	2.48	0.44
1:B:28:GLN:HE21	1:B:28:GLN:HA	1.82	0.44
1:A:53:TYR:CE2	1:A:55:LYS:HB2	2.53	0.44
1:B:98:THR:HG22	1:B:209:ASP:OD1	2.18	0.43
1:A:3:THR:CG2	1:A:4:ILE:N	2.82	0.43
1:B:39:GLN:CD	1:B:39:GLN:N	2.72	0.43

Continued on next page...

Continued from previous page...

Atom-1	Atom-2	Interatomic distance (Å)	Clash overlap (Å)
1:B:28:GLN:HA	1:B:28:GLN:NE2	2.33	0.43
1:B:46:ASP:OD2	5:B:1240:EPE:H51	2.19	0.42
1:A:8:PHE:HE1	1:A:15:ASN:ND2	2.18	0.42
1:B:122:GLN:HB3	1:B:205:PRO:HD3	2.02	0.41
4:E:1:NAG:H61	4:E:2:NAG:C1	2.50	0.41
1:B:129:ASP:O	1:B:141:PRO:HA	2.20	0.41
1:A:3:THR:HG22	1:A:4:ILE:N	2.35	0.41
1:A:15:ASN:OD1	1:A:17:ASP:HB2	2.20	0.41
1:B:183:LEU:HD23	1:B:183:LEU:C	2.41	0.41
1:B:234:HIS:HE1	1:B:236:SER:OG	2.04	0.41
1:A:72:THR:HG22	1:A:170:ILE:HB	2.02	0.41
1:A:199:ASP:OD1	1:A:201:LYS:HE2	2.20	0.41
1:B:205:PRO:HG2	1:B:208:VAL:HG12	2.03	0.41
1:A:133:ASN:HB3	1:A:134:PRO:CD	2.51	0.40
1:A:88:ALA:HB1	1:A:89:ASP:CG	2.42	0.40
1:B:34:LEU:O	1:B:49:GLY:HA3	2.22	0.40

There are no symmetry-related clashes.

5.3 Torsion angles [i](#)

5.3.1 Protein backbone [i](#)

In the following table, the Percentiles column shows the percent Ramachandran outliers of the chain as a percentile score with respect to all X-ray entries followed by that with respect to entries of similar resolution.

The Analysed column shows the number of residues for which the backbone conformation was analysed, and the total number of residues.

Mol	Chain	Analysed	Favoured	Allowed	Outliers	Percentiles	
1	A	237/242 (98%)	228 (96%)	8 (3%)	1 (0%)	34	30
1	B	237/242 (98%)	230 (97%)	7 (3%)	0	100	100
All	All	474/484 (98%)	458 (97%)	15 (3%)	1 (0%)	47	44

All (1) Ramachandran outliers are listed below:

Mol	Chain	Res	Type
1	A	15	ASN

5.3.2 Protein sidechains [i](#)

In the following table, the Percentiles column shows the percent sidechain outliers of the chain as a percentile score with respect to all X-ray entries followed by that with respect to entries of similar resolution.

The Analysed column shows the number of residues for which the sidechain conformation was analysed, and the total number of residues.

Mol	Chain	Analysed	Rotameric	Outliers	Percentiles	
1	A	204/208 (98%)	201 (98%)	3 (2%)	65	69
1	B	204/208 (98%)	204 (100%)	0	100	100
All	All	408/416 (98%)	405 (99%)	3 (1%)	84	88

All (3) residues with a non-rotameric sidechain are listed below:

Mol	Chain	Res	Type
1	A	39	GLN
1	A	117	GLN
1	A	124	LEU

Sometimes sidechains can be flipped to improve hydrogen bonding and reduce clashes. All (11) such sidechains are listed below:

Mol	Chain	Res	Type
1	A	33	GLN
1	A	38	ASN
1	A	80	GLN
1	A	119	ASN
1	A	156	GLN
1	B	28	GLN
1	B	33	GLN
1	B	38	ASN
1	B	80	GLN
1	B	104	GLN
1	B	234	HIS

5.3.3 RNA [i](#)

There are no RNA molecules in this entry.

5.4 Non-standard residues in protein, DNA, RNA chains [i](#)

There are no non-standard protein/DNA/RNA residues in this entry.

5.5 Carbohydrates [i](#)

13 monosaccharides are modelled in this entry.

In the following table, the Counts columns list the number of bonds (or angles) for which Mogul statistics could be retrieved, the number of bonds (or angles) that are observed in the model and the number of bonds (or angles) that are defined in the Chemical Component Dictionary. The Link column lists molecule types, if any, to which the group is linked. The Z score for a bond length (or angle) is the number of standard deviations the observed value is removed from the expected value. A bond length (or angle) with $|Z| > 2$ is considered an outlier worth inspection. RMSZ is the root-mean-square of all Z scores of the bond lengths (or angles).

Mol	Type	Chain	Res	Link	Bond lengths			Bond angles		
					Counts	RMSZ	# Z > 2	Counts	RMSZ	# Z > 2
2	NAG	C	1	1,2	14,14,15	0.58	0	17,19,21	0.72	0
2	FUC	C	2	2	10,10,11	0.50	0	14,14,16	0.38	0
2	NAG	C	3	2	14,14,15	0.51	0	17,19,21	0.65	0
3	BGC	D	1	3	12,12,12	0.90	0	17,17,17	0.49	0
3	GAL	D	2	3	11,11,12	1.02	0	15,15,17	0.94	1 (6%)
4	NAG	E	1	1,4	14,14,15	0.58	0	17,19,21	0.93	1 (5%)
4	NAG	E	2	4	14,14,15	0.54	0	17,19,21	0.64	0
4	BMA	E	3	4	11,11,12	0.56	0	15,15,17	0.47	0
4	XYP	E	4	4	9,9,10	1.59	2 (22%)	10,12,14	1.64	2 (20%)
4	MAN	E	5	4	11,11,12	0.46	0	15,15,17	0.52	0
4	FUL	E	6	4	10,10,11	0.40	0	14,14,16	0.33	0
3	BGC	F	1	3	12,12,12	1.00	0	17,17,17	0.52	0
3	GAL	F	2	3	11,11,12	1.04	0	15,15,17	0.93	1 (6%)

In the following table, the Chirals column lists the number of chiral outliers, the number of chiral centers analysed, the number of these observed in the model and the number defined in the Chemical Component Dictionary. Similar counts are reported in the Torsion and Rings columns. '-' means no outliers of that kind were identified.

Mol	Type	Chain	Res	Link	Chirals	Torsions	Rings
2	NAG	C	1	1,2	-	0/6/23/26	0/1/1/1
2	FUC	C	2	2	-	-	0/1/1/1
2	NAG	C	3	2	-	3/6/23/26	0/1/1/1
3	BGC	D	1	3	-	0/2/22/22	0/1/1/1
3	GAL	D	2	3	-	0/2/19/22	0/1/1/1

Continued on next page...

Continued from previous page...

Mol	Type	Chain	Res	Link	Chirals	Torsions	Rings
4	NAG	E	1	1,4	-	2/6/23/26	0/1/1/1
4	NAG	E	2	4	-	2/6/23/26	0/1/1/1
4	BMA	E	3	4	-	0/2/19/22	0/1/1/1
4	XYP	E	4	4	-	-	0/1/1/1
4	MAN	E	5	4	-	0/2/19/22	0/1/1/1
4	FUL	E	6	4	-	-	0/1/1/1
3	BGC	F	1	3	-	0/2/22/22	0/1/1/1
3	GAL	F	2	3	-	0/2/19/22	0/1/1/1

All (2) bond length outliers are listed below:

Mol	Chain	Res	Type	Atoms	Z	Observed(Å)	Ideal(Å)
4	E	4	XYP	O5-C5	2.44	1.47	1.42
4	E	4	XYP	C5-C4	2.22	1.57	1.52

All (5) bond angle outliers are listed below:

Mol	Chain	Res	Type	Atoms	Z	Observed(°)	Ideal(°)
4	E	4	XYP	O2-C2-C3	-2.93	104.28	110.14
4	E	4	XYP	C5-C4-C3	-2.80	106.22	109.67
4	E	1	NAG	C2-N2-C7	-2.55	119.27	122.90
3	D	2	GAL	C3-C4-C5	-2.21	106.29	110.24
3	F	2	GAL	C3-C4-C5	-2.12	106.46	110.24

There are no chirality outliers.

All (7) torsion outliers are listed below:

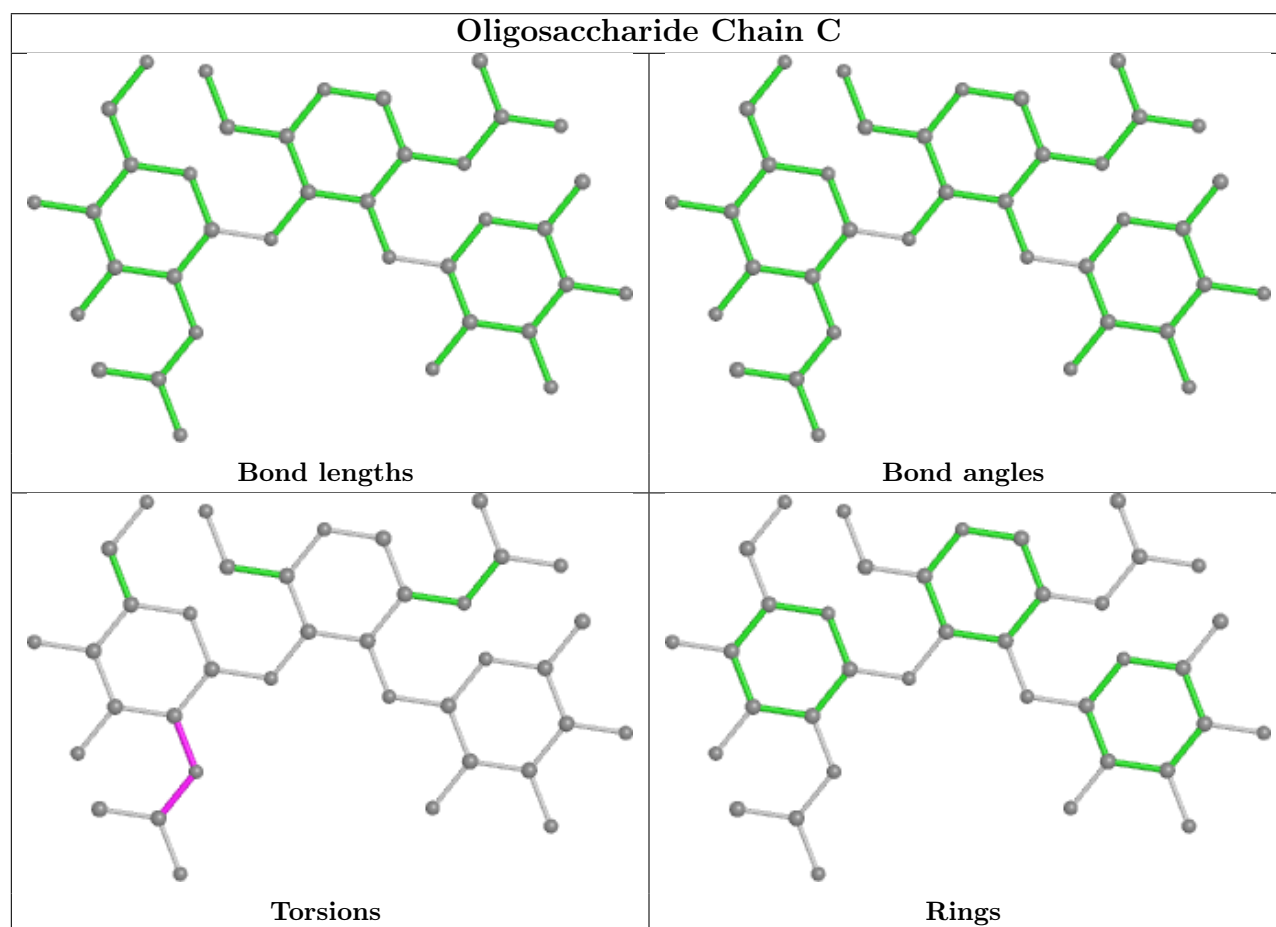
Mol	Chain	Res	Type	Atoms
2	C	3	NAG	C3-C2-N2-C7
4	E	1	NAG	C8-C7-N2-C2
4	E	1	NAG	O7-C7-N2-C2
2	C	3	NAG	C8-C7-N2-C2
2	C	3	NAG	O7-C7-N2-C2
4	E	2	NAG	C4-C5-C6-O6
4	E	2	NAG	O5-C5-C6-O6

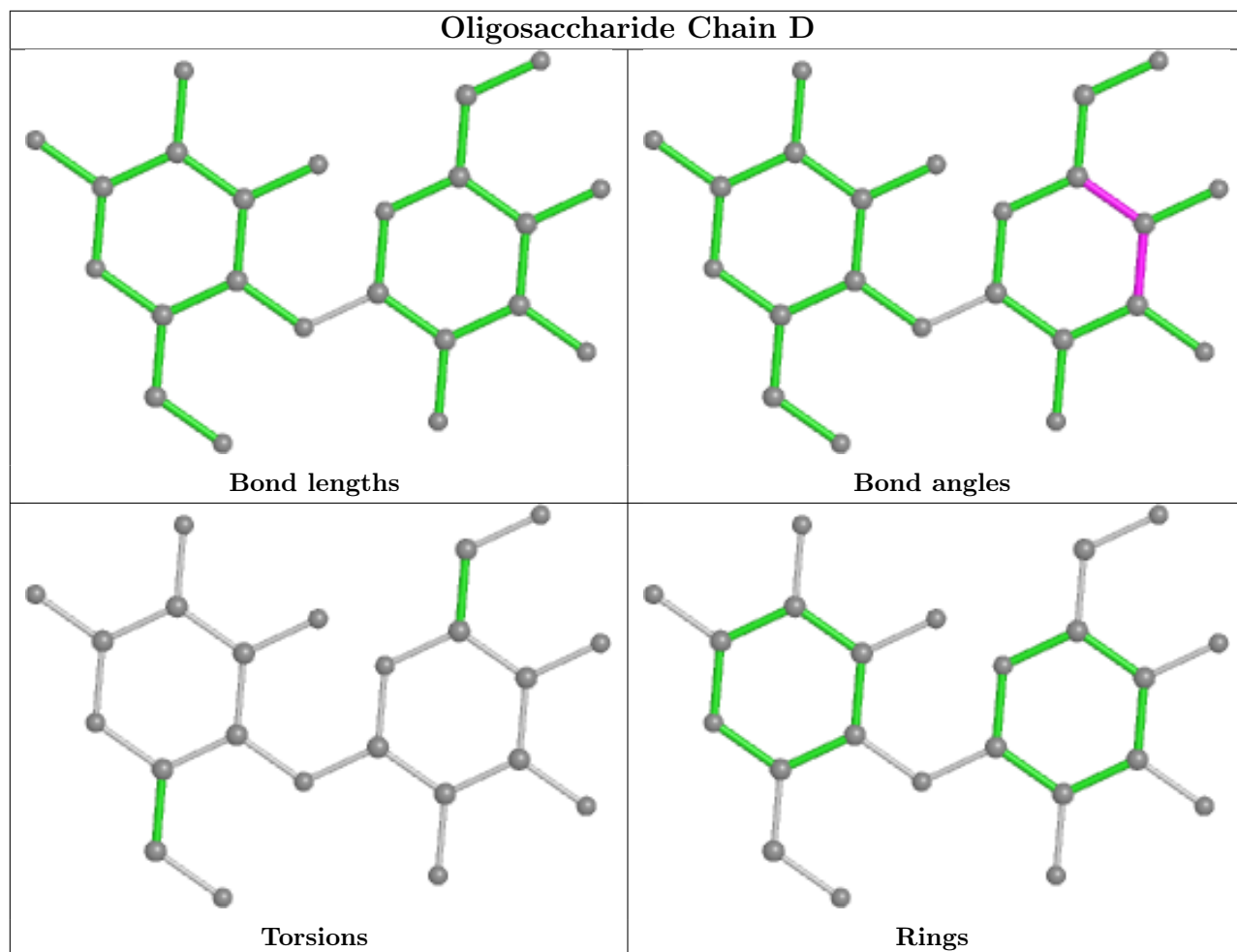
There are no ring outliers.

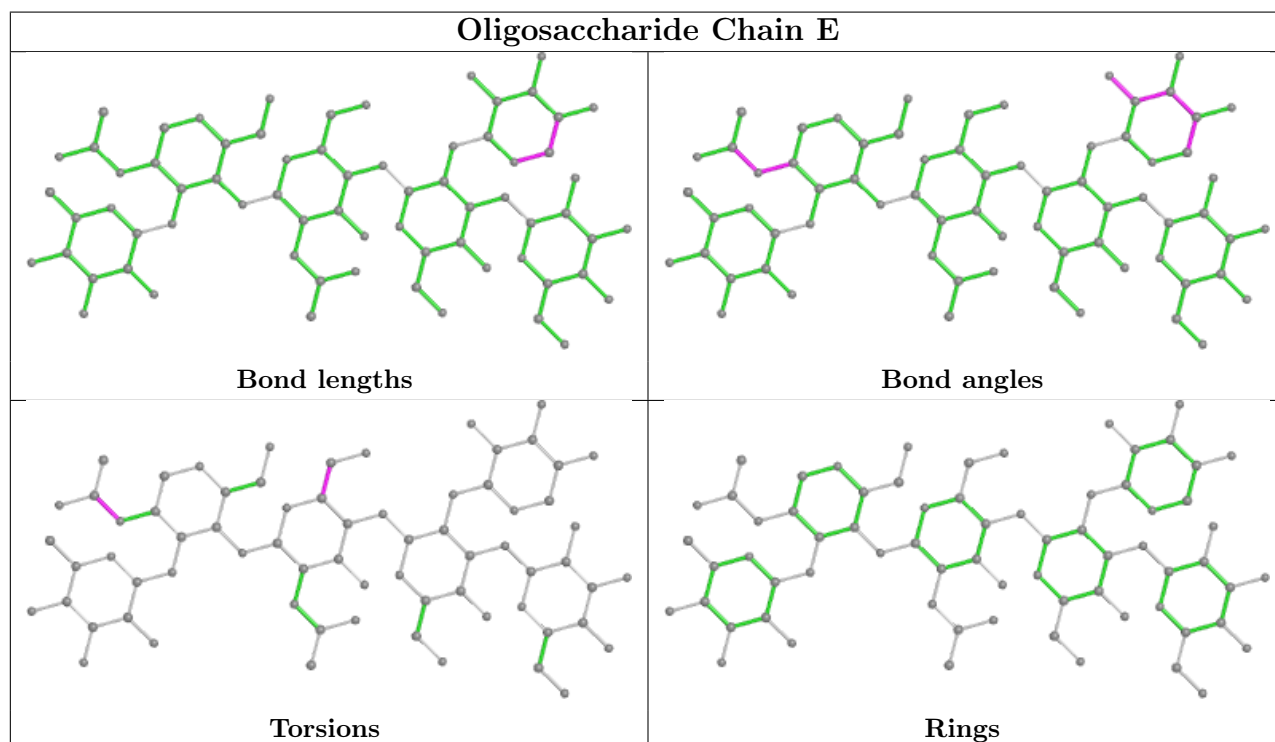
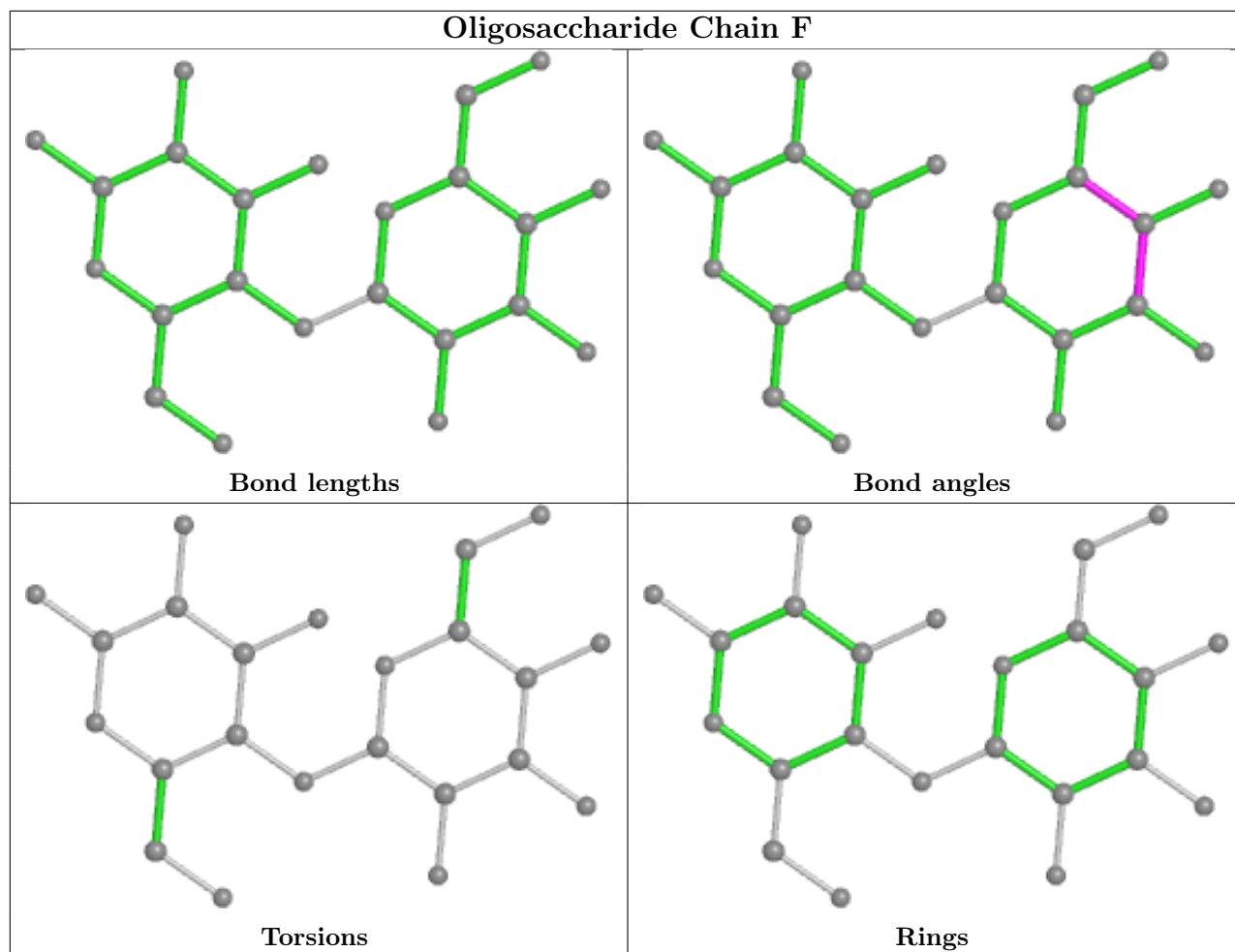
4 monomers are involved in 2 short contacts:

Mol	Chain	Res	Type	Clashes	Symm-Clashes
2	C	3	NAG	1	0
4	E	2	NAG	1	0
2	C	2	FUC	1	0
4	E	1	NAG	1	0

The following is a two-dimensional graphical depiction of Mogul quality analysis of bond lengths, bond angles, torsion angles, and ring geometry for oligosaccharide.







5.6 Ligand geometry [i](#)

Of 8 ligands modelled in this entry, 4 are monoatomic - leaving 4 for Mogul analysis.

In the following table, the Counts columns list the number of bonds (or angles) for which Mogul statistics could be retrieved, the number of bonds (or angles) that are observed in the model and the number of bonds (or angles) that are defined in the Chemical Component Dictionary. The Link column lists molecule types, if any, to which the group is linked. The Z score for a bond length (or angle) is the number of standard deviations the observed value is removed from the expected value. A bond length (or angle) with $|Z| > 2$ is considered an outlier worth inspection. RMSZ is the root-mean-square of all Z scores of the bond lengths (or angles).

Mol	Type	Chain	Res	Link	Bond lengths			Bond angles		
					Counts	RMSZ	# Z > 2	Counts	RMSZ	# Z > 2
5	EPE	A	1240	-	15,15,15	1.83	3 (20%)	18,20,20	1.68	3 (16%)
5	EPE	B	1239	-	15,15,15	1.86	3 (20%)	18,20,20	1.77	4 (22%)
5	EPE	B	1240	-	15,15,15	1.92	2 (13%)	18,20,20	1.89	3 (16%)
5	EPE	A	1241	-	15,15,15	2.06	3 (20%)	18,20,20	1.76	4 (22%)

In the following table, the Chirals column lists the number of chiral outliers, the number of chiral centers analysed, the number of these observed in the model and the number defined in the Chemical Component Dictionary. Similar counts are reported in the Torsion and Rings columns. '-' means no outliers of that kind were identified.

Mol	Type	Chain	Res	Link	Chirals	Torsions	Rings
5	EPE	A	1240	-	-	3/9/19/19	0/1/1/1
5	EPE	B	1239	-	-	0/9/19/19	0/1/1/1
5	EPE	B	1240	-	-	3/9/19/19	0/1/1/1
5	EPE	A	1241	-	-	1/9/19/19	0/1/1/1

All (11) bond length outliers are listed below:

Mol	Chain	Res	Type	Atoms	Z	Observed(Å)	Ideal(Å)
5	A	1241	EPE	O3S-S	5.47	1.66	1.47
5	B	1239	EPE	O3S-S	5.46	1.66	1.47
5	A	1240	EPE	O3S-S	5.45	1.66	1.47
5	B	1240	EPE	O3S-S	5.17	1.65	1.47
5	B	1240	EPE	C10-S	3.61	1.82	1.77
5	A	1241	EPE	C10-S	3.38	1.82	1.77
5	B	1239	EPE	C10-S	2.59	1.81	1.77
5	A	1240	EPE	C10-S	2.52	1.81	1.77
5	B	1239	EPE	C5-N4	2.07	1.52	1.46
5	A	1240	EPE	C5-N4	2.05	1.52	1.46
5	A	1241	EPE	C3-N4	2.03	1.52	1.46

All (14) bond angle outliers are listed below:

Mol	Chain	Res	Type	Atoms	Z	Observed(°)	Ideal(°)
5	B	1240	EPE	O2S-S-C10	5.09	113.05	106.92
5	A	1241	EPE	O2S-S-C10	4.81	112.71	106.92
5	B	1239	EPE	O2S-S-C10	4.77	112.66	106.92
5	A	1240	EPE	O2S-S-C10	4.54	112.38	106.92
5	B	1240	EPE	O3S-S-O1S	-3.93	101.66	111.27
5	A	1240	EPE	O3S-S-O1S	-3.24	103.35	111.27
5	A	1241	EPE	O3S-S-O1S	-3.22	103.40	111.27
5	B	1239	EPE	O3S-S-O1S	-2.89	104.22	111.27
5	B	1239	EPE	O1S-S-C10	-2.75	103.60	106.92
5	B	1240	EPE	O2S-S-O1S	2.45	122.43	113.95
5	A	1241	EPE	C2-C3-N4	2.14	115.03	110.64
5	A	1241	EPE	O2S-S-O1S	2.13	121.33	113.95
5	B	1239	EPE	O2S-S-O1S	2.09	121.19	113.95
5	A	1240	EPE	O2S-S-O1S	2.08	121.16	113.95

There are no chirality outliers.

All (7) torsion outliers are listed below:

Mol	Chain	Res	Type	Atoms
5	A	1241	EPE	N4-C7-C8-O8
5	A	1240	EPE	N4-C7-C8-O8
5	A	1240	EPE	C10-C9-N1-C6
5	B	1240	EPE	C10-C9-N1-C6
5	B	1240	EPE	N4-C7-C8-O8
5	A	1240	EPE	C10-C9-N1-C2
5	B	1240	EPE	C10-C9-N1-C2

There are no ring outliers.

1 monomer is involved in 3 short contacts:

Mol	Chain	Res	Type	Clashes	Symm-Clashes
5	B	1240	EPE	3	0

5.7 Other polymers

There are no such residues in this entry.

5.8 Polymer linkage issues

There are no chain breaks in this entry.

6 Fit of model and data [i](#)

6.1 Protein, DNA and RNA chains [i](#)

EDS was not executed - this section is therefore empty.

6.2 Non-standard residues in protein, DNA, RNA chains [i](#)

EDS was not executed - this section is therefore empty.

6.3 Carbohydrates [i](#)

EDS was not executed - this section is therefore empty.

6.4 Ligands [i](#)

EDS was not executed - this section is therefore empty.

6.5 Other polymers [i](#)

EDS was not executed - this section is therefore empty.