



# Full wwPDB X-ray Structure Validation Report ⓘ

Oct 5, 2023 – 07:10 AM EDT

PDB ID : 6V4S  
Title : A Closed pore conformation of a Pentameric ligand-gated ion channel with additional N-terminal domain  
Authors : Delarue, M.; Hu, H.D.  
Deposited on : 2019-11-29  
Resolution : 3.55 Å(reported)

This is a Full wwPDB X-ray Structure Validation Report for a publicly released PDB entry.

We welcome your comments at [validation@mail.wwpdb.org](mailto:validation@mail.wwpdb.org)

A user guide is available at

<https://www.wwpdb.org/validation/2017/XrayValidationReportHelp>

with specific help available everywhere you see the ⓘ symbol.

The types of validation reports are described at

<http://www.wwpdb.org/validation/2017/FAQs#types>.

---

The following versions of software and data (see [references ⓘ](#)) were used in the production of this report:

MolProbity : **FAILED**  
Mogul : 1.8.5 (274361), CSD as541be (2020)  
Xtriage (Phenix) : 1.13  
EDS : **FAILED**  
buster-report : 1.1.7 (2018)  
Percentile statistics : 20191225.v01 (using entries in the PDB archive December 25th 2019)  
Ideal geometry (proteins) : Engh & Huber (2001)  
Ideal geometry (DNA, RNA) : Parkinson et al. (1996)  
Validation Pipeline (wwPDB-VP) : 2.35.1

## 1 Overall quality at a glance

The following experimental techniques were used to determine the structure:

*X-RAY DIFFRACTION*

The reported resolution of this entry is 3.55 Å.

There are no overall percentile quality scores available for this entry.

MolProbity and EDS failed to run properly - the sequence quality summary graphics cannot be shown.

## 2 Entry composition [i](#)

There are 6 unique types of molecules in this entry. The entry contains 23261 atoms, of which 0 are hydrogens and 0 are deuteriums.

In the tables below, the ZeroOcc column contains the number of atoms modelled with zero occupancy, the AltConf column contains the number of residues with at least one atom in alternate conformation and the Trace column contains the number of residues modelled with at most 2 atoms.

- Molecule 1 is a protein called Neur\_chan\_LBD domain-containing protein.

Mol	Chain	Residues	Atoms					ZeroOcc	AltConf	Trace
			Total	C	N	O	S			
1	A	585	4576	2948	752	865	11	0	0	0
1	E	591	4613	2972	758	872	11	0	0	0
1	D	591	4613	2972	758	872	11	0	0	0
1	C	588	4597	2960	756	870	11	0	0	0
1	B	586	4584	2951	753	869	11	0	0	0

- Molecule 2 is CALCIUM ION (three-letter code: CA) (formula: Ca).

Mol	Chain	Residues	Atoms		ZeroOcc	AltConf
2	A	2	Total 2	Ca 2	2	0
2	E	1	Total 1	Ca 1	0	0
2	C	1	Total 1	Ca 1	1	0
2	B	1	Total 1	Ca 1	1	0

- Molecule 3 is SODIUM ION (three-letter code: NA) (formula: Na).

Mol	Chain	Residues	Atoms		ZeroOcc	AltConf
3	A	3	Total 3	Na 3	0	0
3	D	1	Total 1	Na 1	0	0
3	C	2	Total 2	Na 2	1	0

*Continued on next page...*

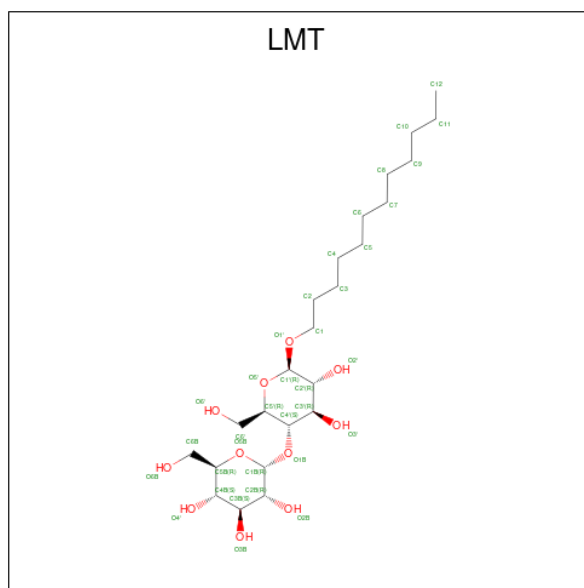
Continued from previous page...

Mol	Chain	Residues	Atoms		ZeroOcc	AltConf
3	B	1	Total	Na	0	0
			1	1		

- Molecule 4 is CHLORIDE ION (three-letter code: CL) (formula: Cl).

Mol	Chain	Residues	Atoms		ZeroOcc	AltConf
4	A	1	Total	Cl	0	0
			1	1		
4	E	1	Total	Cl	0	0
			1	1		
4	D	1	Total	Cl	0	0
			1	1		
4	C	1	Total	Cl	0	0
			1	1		
4	B	1	Total	Cl	0	0
			1	1		

- Molecule 5 is DODECYL-BETA-D-MALTOSE (three-letter code: LMT) (formula: C<sub>24</sub>H<sub>46</sub>O<sub>11</sub>).



Mol	Chain	Residues	Atoms			ZeroOcc	AltConf
5	A	1	Total	C	O	0	0
			25	14	11		
5	E	1	Total	C	O	0	0
			25	14	11		
5	E	1	Total	C	O	0	0
			25	14	11		

Continued on next page...

*Continued from previous page...*

Mol	Chain	Residues	Atoms	ZeroOcc	AltConf
5	E	1	Total C O 25 14 11	0	0
5	D	1	Total C O 26 15 11	0	0
5	C	1	Total C O 25 14 11	0	0
5	C	1	Total C O 27 16 11	0	0
5	B	1	Total C O 25 14 11	0	0
5	B	1	Total C O 26 15 11	0	0
5	B	1	Total C O 27 16 11	0	0

- Molecule 6 is water.

Mol	Chain	Residues	Atoms	ZeroOcc	AltConf
6	A	1	Total O 1 1	0	0
6	E	1	Total O 1 1	0	0
6	D	1	Total O 1 1	0	0
6	C	1	Total O 1 1	0	0
6	B	1	Total O 1 1	0	0

MolProbity and EDS failed to run properly - this section is therefore empty.

### 3 Data and refinement statistics

EDS failed to run properly - this section is therefore incomplete.

Property	Value	Source
Space group	P 21 21 2	Depositor
Cell constants a, b, c, $\alpha$ , $\beta$ , $\gamma$	159.41Å 337.25Å 111.81Å 90.00° 90.00° 90.00°	Depositor
Resolution (Å)	48.04 – 3.55	Depositor
% Data completeness (in resolution range)	89.0 (48.04-3.55)	Depositor
$R_{merge}$	(Not available)	Depositor
$R_{sym}$	(Not available)	Depositor
$\langle I/\sigma(I) \rangle$ <sup>1</sup>	1.42 (at 3.57Å)	Xtrriage
Refinement program	REFMAC 5.8.0158	Depositor
R, $R_{free}$	0.194 , 0.268	Depositor
Wilson B-factor (Å <sup>2</sup> )	94.2	Xtrriage
Anisotropy	0.916	Xtrriage
L-test for twinning <sup>2</sup>	$\langle  L  \rangle = 0.48$ , $\langle L^2 \rangle = 0.30$	Xtrriage
Estimated twinning fraction	No twinning to report.	Xtrriage
Total number of atoms	23261	wwPDB-VP
Average B, all atoms (Å <sup>2</sup> )	145.0	wwPDB-VP

Xtrriage's analysis on translational NCS is as follows: *The largest off-origin peak in the Patterson function is 6.15% of the height of the origin peak. No significant pseudotranslation is detected.*

<sup>1</sup>Intensities estimated from amplitudes.

<sup>2</sup>Theoretical values of  $\langle |L| \rangle$ ,  $\langle L^2 \rangle$  for acentric reflections are 0.5, 0.333 respectively for untwinned datasets, and 0.375, 0.2 for perfectly twinned datasets.

## 4 Model quality [i](#)

### 4.1 Standard geometry [i](#)

MolProbity failed to run properly - this section is therefore empty.

### 4.2 Too-close contacts [i](#)

MolProbity failed to run properly - this section is therefore empty.

### 4.3 Torsion angles [i](#)

#### 4.3.1 Protein backbone [i](#)

MolProbity failed to run properly - this section is therefore empty.

#### 4.3.2 Protein sidechains [i](#)

MolProbity failed to run properly - this section is therefore empty.

#### 4.3.3 RNA [i](#)

MolProbity failed to run properly - this section is therefore empty.

### 4.4 Non-standard residues in protein, DNA, RNA chains [i](#)

There are no non-standard protein/DNA/RNA residues in this entry.

### 4.5 Carbohydrates [i](#)

There are no monosaccharides in this entry.

### 4.6 Ligand geometry [i](#)

Of 27 ligands modelled in this entry, 17 are monoatomic - leaving 10 for Mogul analysis.

In the following table, the Counts columns list the number of bonds (or angles) for which Mogul statistics could be retrieved, the number of bonds (or angles) that are observed in the model and the number of bonds (or angles) that are defined in the Chemical Component Dictionary. The Link column lists molecule types, if any, to which the group is linked. The Z score for a bond

length (or angle) is the number of standard deviations the observed value is removed from the expected value. A bond length (or angle) with  $|Z| > 2$  is considered an outlier worth inspection. RMSZ is the root-mean-square of all Z scores of the bond lengths (or angles).

Mol	Type	Chain	Res	Link	Bond lengths			Bond angles		
					Counts	RMSZ	# Z  > 2	Counts	RMSZ	# Z  > 2
5	LMT	C	706	-	28,28,36	1.25	1 (3%)	39,39,47	2.14	12 (30%)
5	LMT	B	705	-	27,27,36	1.22	1 (3%)	37,38,47	1.82	10 (27%)
5	LMT	E	705	-	26,26,36	1.40	3 (11%)	37,37,47	2.28	10 (27%)
5	LMT	A	707	-	26,26,36	1.24	2 (7%)	37,37,47	1.97	8 (21%)
5	LMT	C	705	-	26,26,36	1.14	1 (3%)	37,37,47	1.77	9 (24%)
5	LMT	E	704	-	26,26,36	0.98	1 (3%)	37,37,47	2.02	13 (35%)
5	LMT	E	703	-	26,26,36	1.05	1 (3%)	37,37,47	1.60	5 (13%)
5	LMT	B	706	-	28,28,36	0.50	0	39,39,47	1.24	6 (15%)
5	LMT	D	703	-	27,27,36	1.28	1 (3%)	37,38,47	2.41	9 (24%)
5	LMT	B	704	-	26,26,36	1.10	1 (3%)	37,37,47	1.60	7 (18%)

In the following table, the Chirals column lists the number of chiral outliers, the number of chiral centers analysed, the number of these observed in the model and the number defined in the Chemical Component Dictionary. Similar counts are reported in the Torsion and Rings columns. '-' means no outliers of that kind were identified.

Mol	Type	Chain	Res	Link	Chirals	Torsions	Rings
5	LMT	C	706	-	-	3/13/53/61	0/2/2/2
5	LMT	B	705	-	-	6/12/52/61	0/2/2/2
5	LMT	E	705	-	-	5/11/51/61	0/2/2/2
5	LMT	A	707	-	-	5/11/51/61	0/2/2/2
5	LMT	C	705	-	-	6/11/51/61	0/2/2/2
5	LMT	E	704	-	-	8/11/51/61	0/2/2/2
5	LMT	E	703	-	-	5/11/51/61	0/2/2/2
5	LMT	B	706	-	-	5/13/53/61	0/2/2/2
5	LMT	D	703	-	-	5/12/52/61	0/2/2/2
5	LMT	B	704	-	-	5/11/51/61	0/2/2/2

All (12) bond length outliers are listed below:

Mol	Chain	Res	Type	Atoms	Z	Observed(Å)	Ideal(Å)
5	E	705	LMT	O1'-C1'	4.59	1.48	1.40
5	D	703	LMT	O1'-C1'	4.47	1.47	1.40
5	A	707	LMT	O1'-C1'	4.12	1.47	1.40

*Continued on next page...*



*Continued from previous page...*

Mol	Chain	Res	Type	Atoms	Z	Observed(Å)	Ideal(Å)
5	B	705	LMT	O1'-C1'	4.07	1.47	1.40
5	C	705	LMT	O1'-C1'	3.99	1.47	1.40
5	C	706	LMT	O1'-C1'	3.80	1.46	1.40
5	B	704	LMT	O1'-C1'	3.61	1.46	1.40
5	E	703	LMT	O1'-C1'	2.92	1.45	1.40
5	E	704	LMT	O1'-C1'	2.85	1.45	1.40
5	E	705	LMT	O1B-C1B	2.41	1.48	1.41
5	A	707	LMT	O1B-C1B	2.10	1.47	1.41
5	E	705	LMT	O5B-C1B	2.09	1.47	1.41

All (89) bond angle outliers are listed below:

Mol	Chain	Res	Type	Atoms	Z	Observed(°)	Ideal(°)
5	D	703	LMT	C1B-O5B-C5B	7.63	128.66	113.69
5	D	703	LMT	C1-O1'-C1'	7.17	125.73	113.84
5	E	705	LMT	C1B-O5B-C5B	6.72	126.89	113.69
5	C	706	LMT	C1B-O5B-C5B	5.85	125.17	113.69
5	E	705	LMT	C1'-O5'-C5'	5.52	124.52	113.69
5	A	707	LMT	O1B-C1B-C2B	5.49	122.32	108.10
5	A	707	LMT	C1B-O1B-C4'	5.03	130.41	117.96
5	E	705	LMT	O5'-C5'-C4'	4.88	120.05	109.75
5	E	703	LMT	O1B-C1B-C2B	4.79	120.51	108.10
5	A	707	LMT	C1'-O5'-C5'	4.67	122.85	113.69
5	D	703	LMT	C1'-O5'-C5'	4.42	122.37	113.69
5	E	703	LMT	C1'-O5'-C5'	4.35	122.23	113.69
5	B	705	LMT	C1B-O5B-C5B	4.29	122.11	113.69
5	E	703	LMT	C1B-O1B-C4'	4.27	128.53	117.96
5	B	704	LMT	C1'-O5'-C5'	4.25	122.03	113.69
5	B	705	LMT	C1-O1'-C1'	4.24	120.87	113.84
5	C	705	LMT	O1B-C1B-C2B	4.16	118.89	108.10
5	C	706	LMT	C1-O1'-C1'	4.05	120.56	113.84
5	C	706	LMT	C3B-C4B-C5B	3.94	117.26	110.24
5	A	707	LMT	C1B-O5B-C5B	3.92	121.38	113.69
5	C	706	LMT	O1'-C1'-C2'	3.87	114.35	108.30
5	E	704	LMT	C4B-C3B-C2B	3.80	117.46	110.82
5	C	705	LMT	O2B-C2B-C1B	3.73	119.12	110.05
5	C	706	LMT	O1B-C4'-C3'	3.70	117.12	107.28
5	B	704	LMT	O5'-C5'-C4'	3.68	117.52	109.75
5	E	704	LMT	C3B-C4B-C5B	3.65	116.75	110.24
5	E	704	LMT	C1B-O1B-C4'	3.63	126.96	117.96
5	B	705	LMT	C3B-C4B-C5B	3.61	116.68	110.24
5	B	704	LMT	C1B-O1B-C4'	3.61	126.89	117.96

*Continued on next page...*

*Continued from previous page...*

Mol	Chain	Res	Type	Atoms	Z	Observed(°)	Ideal(°)
5	C	706	LMT	O5'-C1'-C2'	-3.52	102.89	110.35
5	E	705	LMT	O5B-C5B-C4B	3.52	116.08	109.69
5	C	706	LMT	O5B-C5B-C6B	3.51	115.16	106.44
5	C	705	LMT	O1'-C1'-C2'	3.45	113.69	108.30
5	E	704	LMT	C1B-O5B-C5B	3.43	120.42	113.69
5	E	705	LMT	C2'-C3'-C4'	3.42	117.48	109.68
5	E	704	LMT	O5B-C5B-C6B	3.35	114.77	106.44
5	E	704	LMT	O1B-C1B-C2B	-3.30	99.55	108.10
5	B	706	LMT	O1B-C4'-C3'	3.30	116.06	107.28
5	D	703	LMT	O5'-C1'-C2'	-3.30	103.37	110.35
5	D	703	LMT	O5'-C5'-C4'	3.22	116.53	109.75
5	B	706	LMT	C1B-O5B-C5B	3.18	119.92	113.69
5	B	706	LMT	C4B-C3B-C2B	-3.17	105.29	110.82
5	B	704	LMT	O1B-C1B-C2B	3.16	116.29	108.10
5	C	705	LMT	C1B-O1B-C4'	3.12	125.69	117.96
5	D	703	LMT	C3B-C4B-C5B	3.12	115.80	110.24
5	D	703	LMT	C2'-C3'-C4'	3.10	116.77	109.68
5	C	706	LMT	C2'-C3'-C4'	3.09	116.74	109.68
5	E	704	LMT	O1'-C1'-C2'	3.08	113.11	108.30
5	B	705	LMT	O1'-C1'-C2'	3.03	113.03	108.30
5	B	705	LMT	O5'-C1'-C2'	-2.99	104.02	110.35
5	E	704	LMT	O5'-C1'-C2'	-2.94	104.12	110.35
5	B	706	LMT	O5B-C5B-C4B	2.91	114.97	109.69
5	C	706	LMT	O5'-C5'-C4'	2.86	115.79	109.75
5	E	703	LMT	O2B-C2B-C1B	2.85	116.97	110.05
5	E	705	LMT	C1B-O1B-C4'	2.77	124.82	117.96
5	C	705	LMT	O5'-C5'-C4'	2.77	115.58	109.75
5	E	704	LMT	C1'-O5'-C5'	2.73	119.04	113.69
5	B	705	LMT	C2'-C3'-C4'	2.72	115.89	109.68
5	C	705	LMT	C1'-O5'-C5'	2.70	118.99	113.69
5	E	705	LMT	C1'-C2'-C3'	2.67	115.56	110.00
5	C	706	LMT	C1B-O1B-C4'	2.67	124.56	117.96
5	E	705	LMT	O1'-C1'-C2'	2.59	112.35	108.30
5	E	704	LMT	C1B-C2B-C3B	2.57	115.34	110.00
5	D	703	LMT	O1B-C1B-C2B	2.56	114.74	108.10
5	B	705	LMT	C1B-O1B-C4'	2.49	124.14	117.96
5	B	704	LMT	O2B-C2B-C1B	2.47	116.06	110.05
5	A	707	LMT	O2B-C2B-C1B	2.44	115.97	110.05
5	B	704	LMT	O1'-C1'-C2'	2.42	112.08	108.30
5	B	705	LMT	O1B-C4'-C3'	2.41	113.70	107.28
5	B	704	LMT	O5B-C5B-C6B	2.41	112.42	106.44
5	C	705	LMT	O5'-C1'-C2'	-2.39	105.28	110.35

*Continued on next page...*

*Continued from previous page...*

Mol	Chain	Res	Type	Atoms	Z	Observed(°)	Ideal(°)
5	C	706	LMT	O5B-C5B-C4B	2.39	114.03	109.69
5	E	704	LMT	O5'-C5'-C6'	2.37	112.33	106.44
5	B	705	LMT	O5'-C5'-C4'	2.36	114.73	109.75
5	A	707	LMT	O5'-C5'-C4'	2.33	114.66	109.75
5	E	703	LMT	O5'-C5'-C4'	2.32	114.65	109.75
5	E	705	LMT	C1-O1'-C1'	2.26	119.03	113.92
5	A	707	LMT	O1'-C1'-C2'	2.25	111.82	108.30
5	B	706	LMT	C6B-C5B-C4B	-2.19	107.88	113.00
5	C	705	LMT	O5B-C5B-C6B	2.13	111.72	106.44
5	B	706	LMT	O5B-C1B-C2B	2.10	114.79	110.35
5	C	705	LMT	C1-O1'-C1'	2.10	118.66	113.92
5	E	705	LMT	O1B-C4'-C3'	2.10	112.86	107.28
5	C	706	LMT	C1'-C2'-C3'	2.08	114.34	110.00
5	E	704	LMT	O1B-C4'-C3'	2.07	112.79	107.28
5	E	704	LMT	C1-O1'-C1'	2.03	118.50	113.92
5	D	703	LMT	O5B-C5B-C4B	2.01	113.35	109.69
5	A	707	LMT	O5B-C5B-C4B	2.01	113.34	109.69
5	B	705	LMT	O5B-C5B-C4B	2.00	113.33	109.69

There are no chirality outliers.

All (53) torsion outliers are listed below:

Mol	Chain	Res	Type	Atoms
5	A	707	LMT	C2B-C1B-O1B-C4'
5	E	703	LMT	C2B-C1B-O1B-C4'
5	E	704	LMT	C2'-C1'-O1'-C1
5	E	704	LMT	O5'-C1'-O1'-C1
5	D	703	LMT	C2'-C1'-O1'-C1
5	D	703	LMT	O5'-C1'-O1'-C1
5	C	705	LMT	C2B-C1B-O1B-C4'
5	B	704	LMT	C2'-C1'-O1'-C1
5	B	704	LMT	O5'-C1'-O1'-C1
5	B	706	LMT	C3'-C4'-O1B-C1B
5	B	704	LMT	C2B-C1B-O1B-C4'
5	B	705	LMT	O5B-C5B-C6B-O6B
5	B	706	LMT	O5'-C5'-C6'-O6'
5	B	706	LMT	C4B-C5B-C6B-O6B
5	C	706	LMT	O5B-C5B-C6B-O6B
5	E	703	LMT	O5B-C5B-C6B-O6B
5	B	706	LMT	O5B-C5B-C6B-O6B
5	B	706	LMT	C4'-C5'-C6'-O6'
5	D	703	LMT	C4B-C5B-C6B-O6B

*Continued on next page...*

*Continued from previous page...*

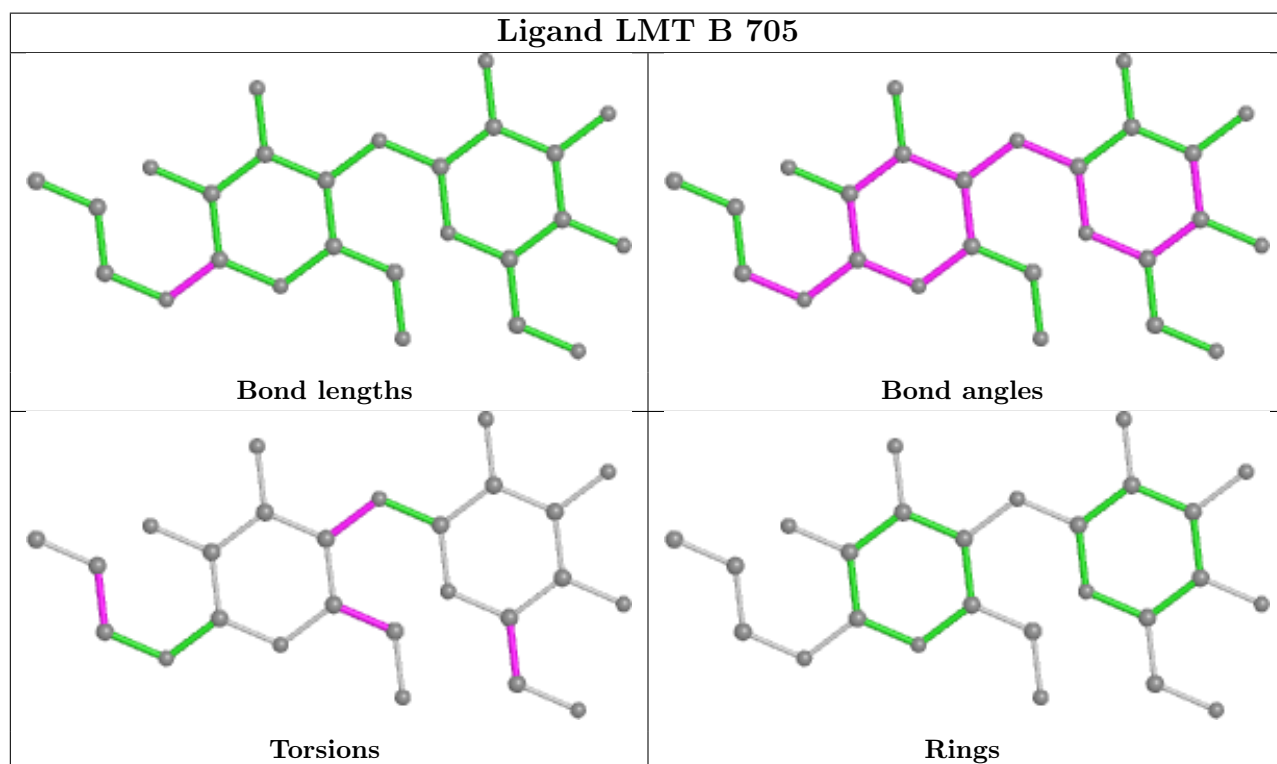
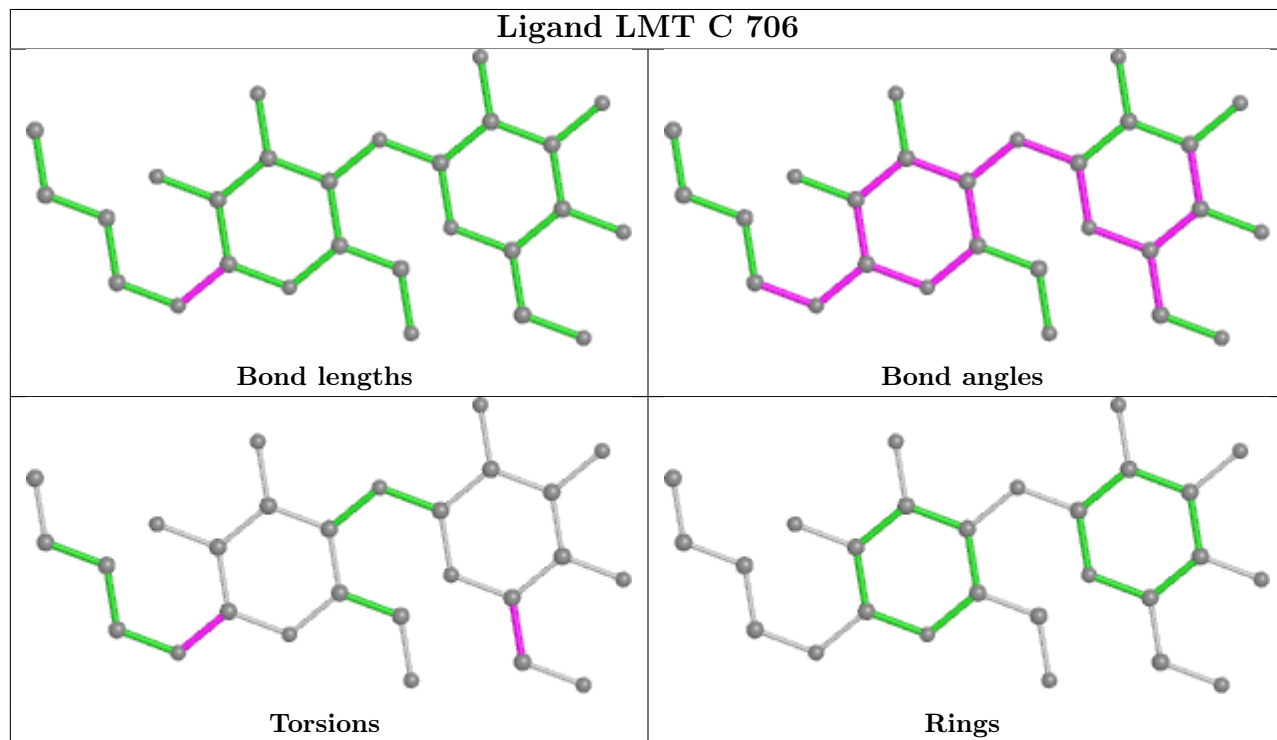
Mol	Chain	Res	Type	Atoms
5	C	706	LMT	O5'-C1'-O1'-C1
5	E	703	LMT	C4'-C5'-C6'-O6'
5	B	705	LMT	C4B-C5B-C6B-O6B
5	E	704	LMT	O5'-C5'-C6'-O6'
5	E	703	LMT	C4B-C5B-C6B-O6B
5	C	705	LMT	O5B-C5B-C6B-O6B
5	D	703	LMT	O5B-C5B-C6B-O6B
5	E	705	LMT	C4'-C5'-C6'-O6'
5	E	704	LMT	O5B-C1B-O1B-C4'
5	C	706	LMT	C2'-C1'-O1'-C1
5	E	704	LMT	O5B-C5B-C6B-O6B
5	E	705	LMT	O5'-C5'-C6'-O6'
5	E	703	LMT	O5'-C5'-C6'-O6'
5	D	703	LMT	O1'-C1-C2-C3
5	B	704	LMT	O5'-C5'-C6'-O6'
5	E	704	LMT	C5'-C4'-O1B-C1B
5	E	704	LMT	C3'-C4'-O1B-C1B
5	A	707	LMT	O5B-C5B-C6B-O6B
5	E	705	LMT	O5B-C5B-C6B-O6B
5	B	704	LMT	O5B-C5B-C6B-O6B
5	B	705	LMT	C3'-C4'-O1B-C1B
5	C	705	LMT	O5'-C5'-C6'-O6'
5	A	707	LMT	O5'-C5'-C6'-O6'
5	B	705	LMT	C5'-C4'-O1B-C1B
5	E	704	LMT	C2-C1-O1'-C1'
5	B	705	LMT	C4'-C5'-C6'-O6'
5	C	705	LMT	C4B-C5B-C6B-O6B
5	B	705	LMT	O1'-C1-C2-C3
5	A	707	LMT	O5B-C1B-O1B-C4'
5	E	705	LMT	O5'-C1'-O1'-C1
5	E	705	LMT	C2'-C1'-O1'-C1
5	C	705	LMT	O5'-C1'-O1'-C1
5	A	707	LMT	C5'-C4'-O1B-C1B
5	C	705	LMT	C2'-C1'-O1'-C1

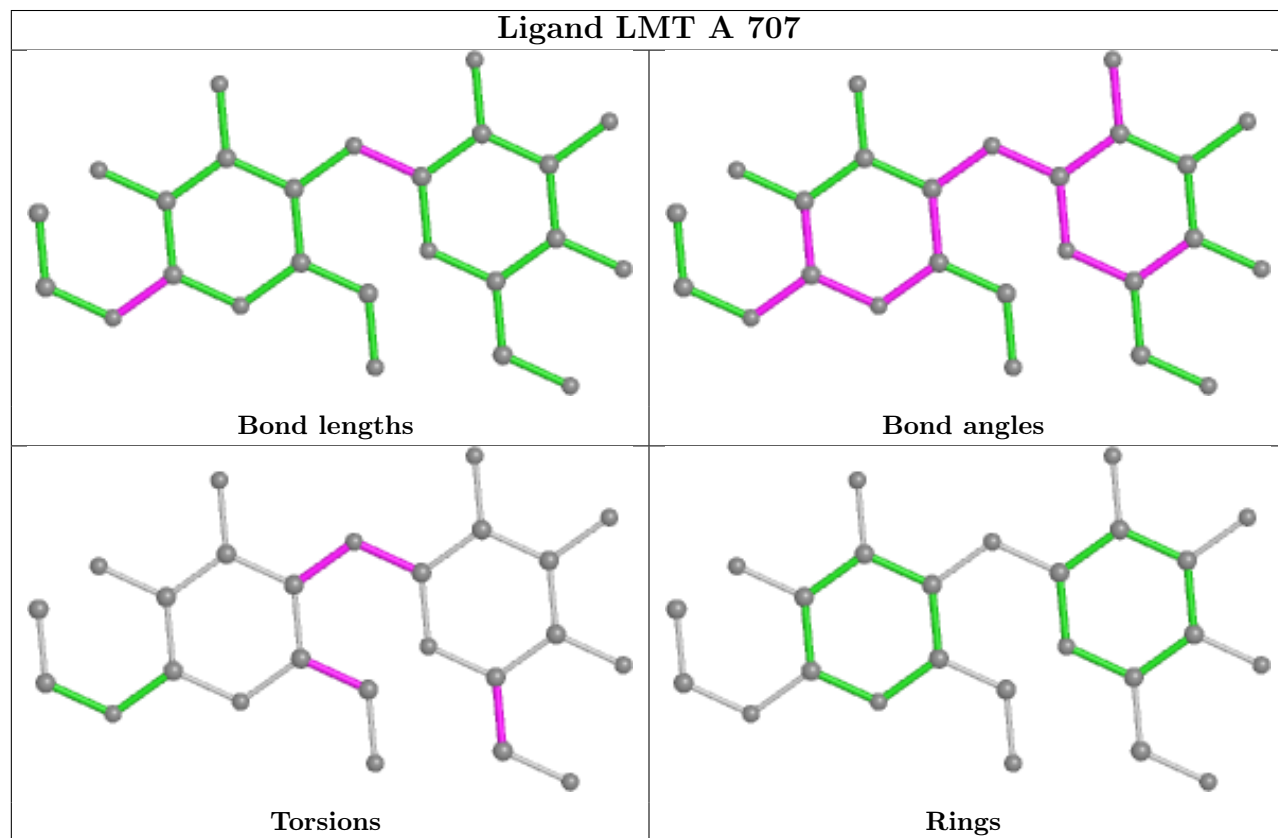
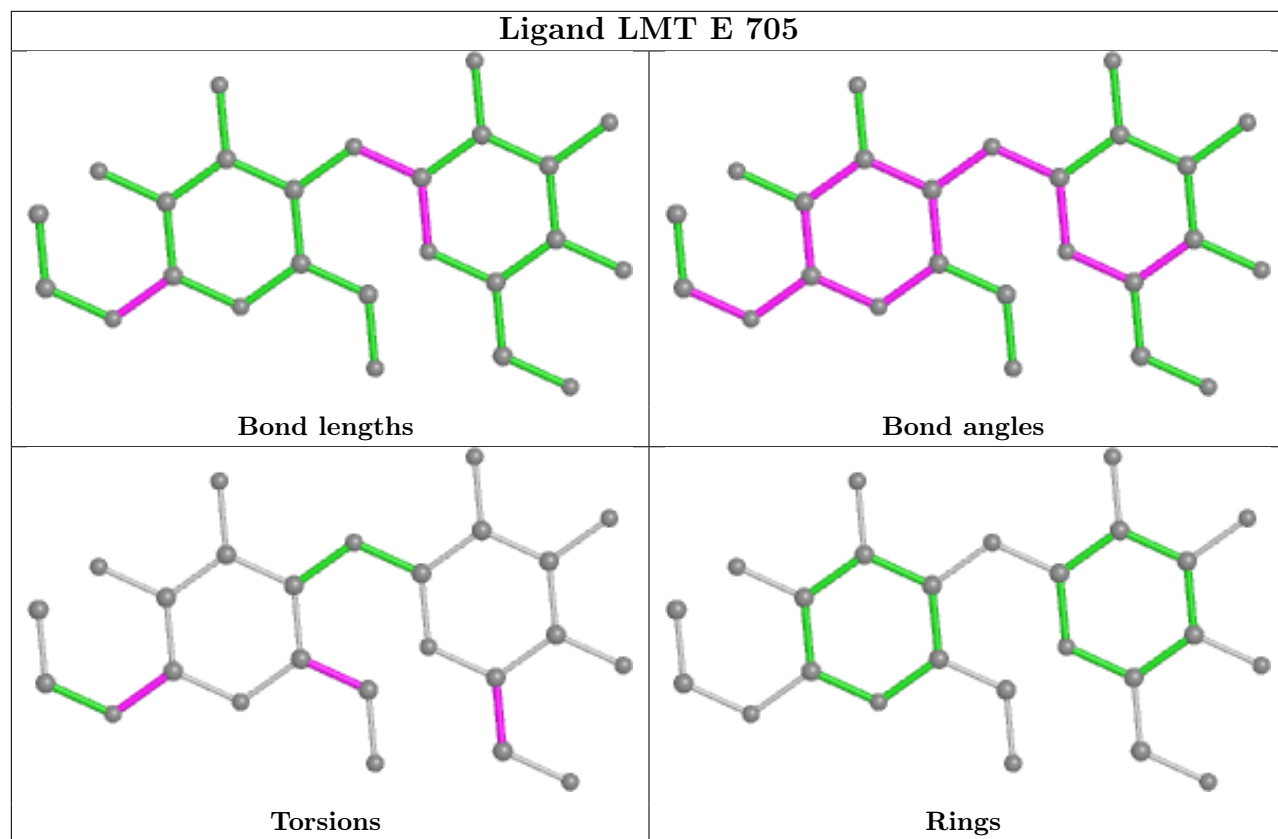
There are no ring outliers.

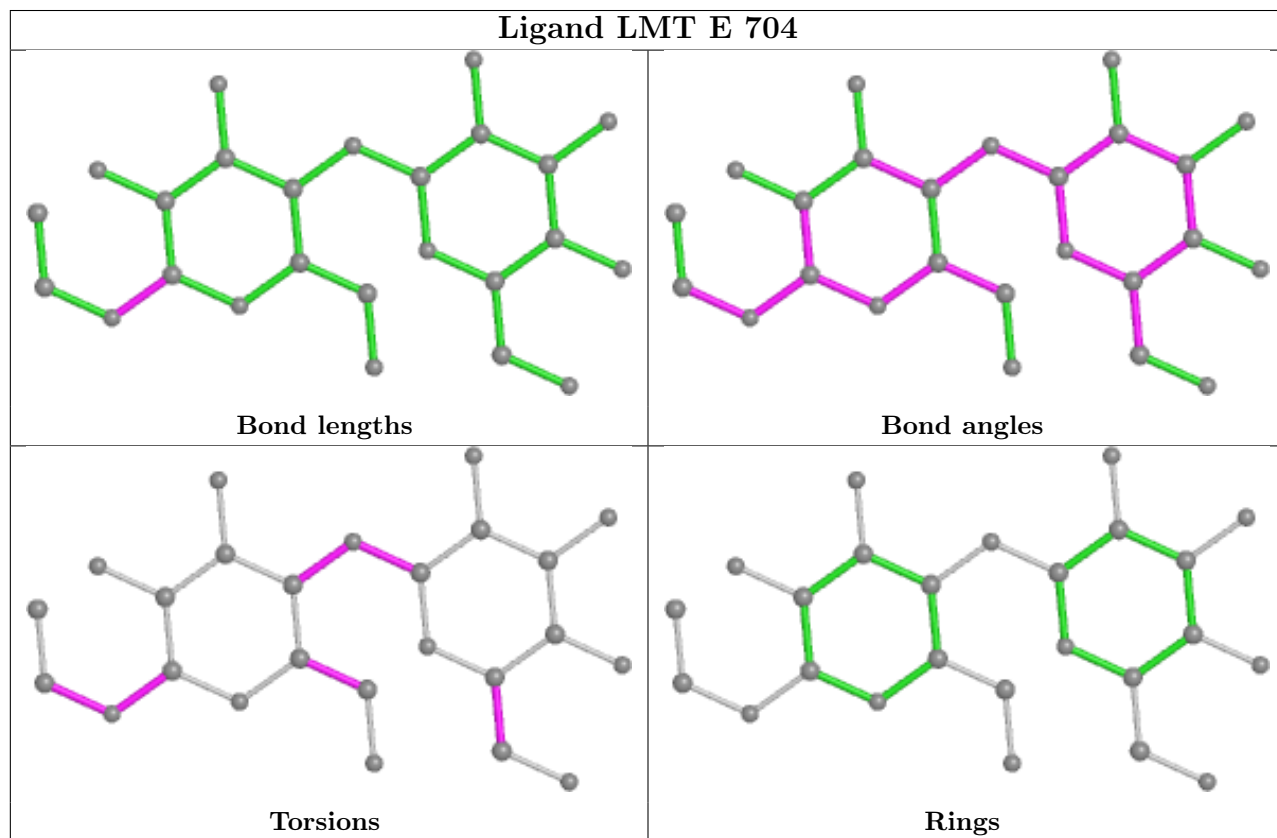
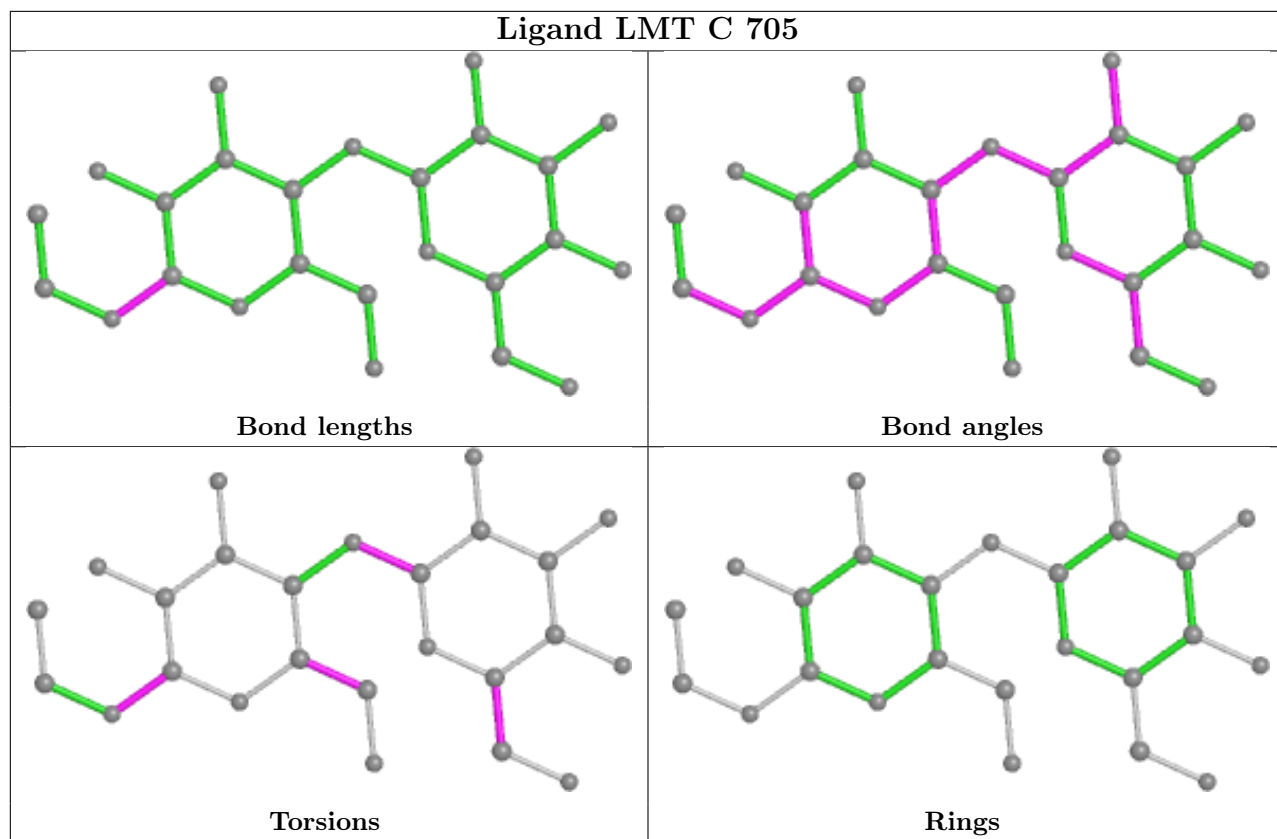
No monomer is involved in short contacts.

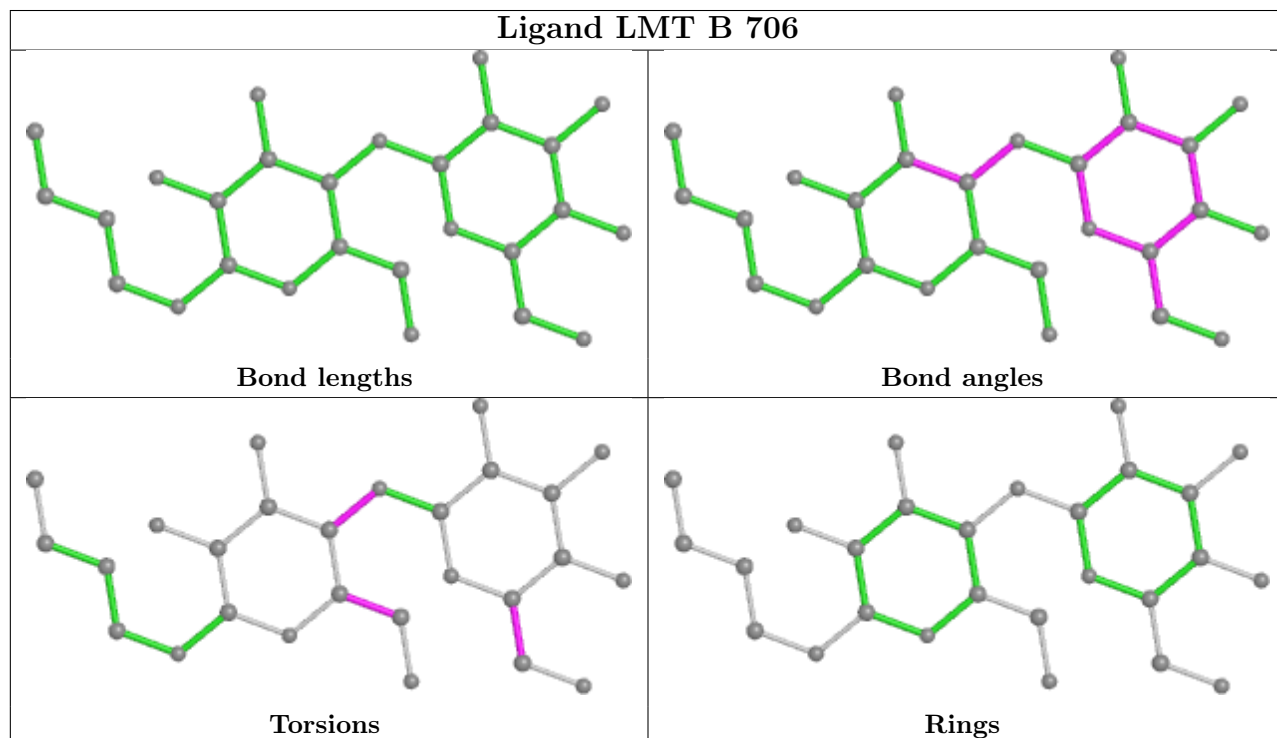
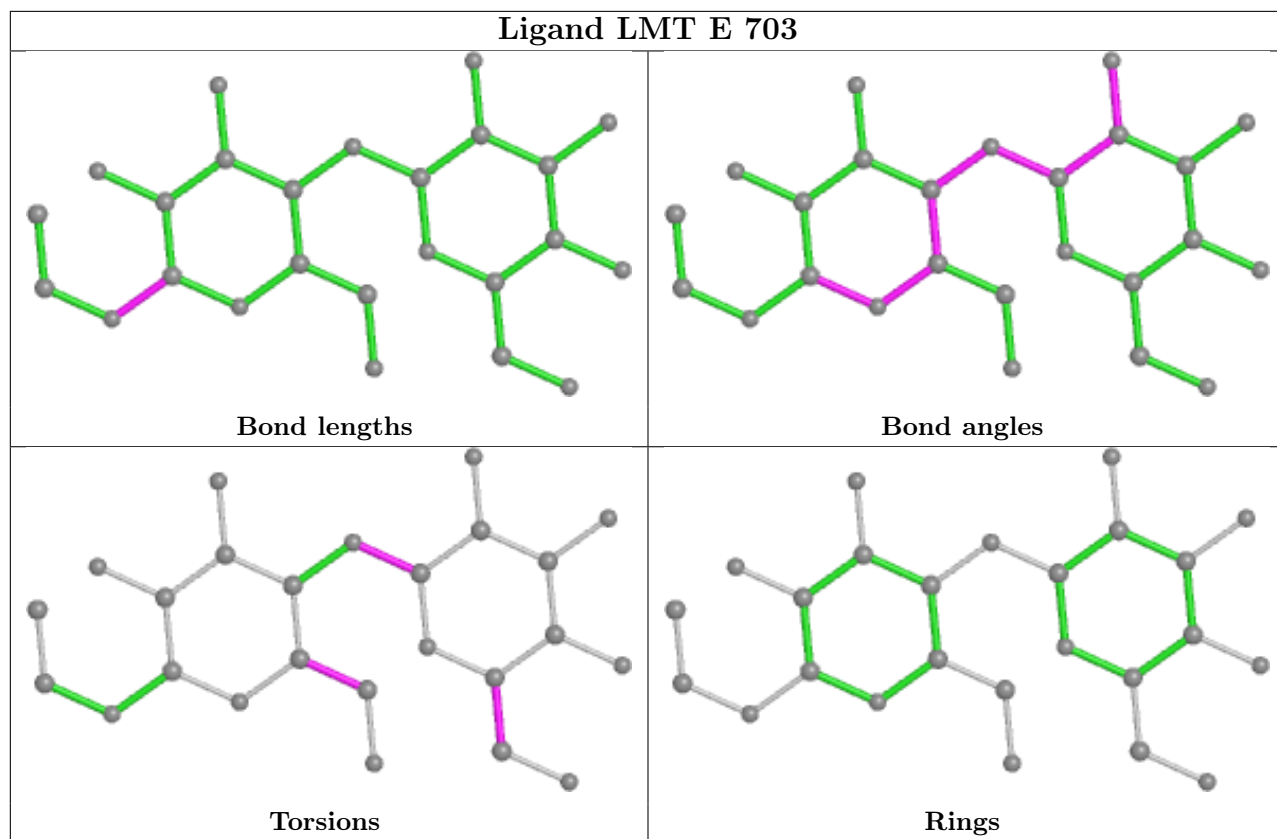
The following is a two-dimensional graphical depiction of Mogul quality analysis of bond lengths, bond angles, torsion angles, and ring geometry for all instances of the Ligand of Interest. In addition, ligands with molecular weight > 250 and outliers as shown on the validation Tables will also be included. For torsion angles, if less than 5% of the Mogul distribution of torsion angles is within 10 degrees of the torsion angle in question, then that torsion angle is considered an outlier.

Any bond that is central to one or more torsion angles identified as an outlier by Mogul will be highlighted in the graph. For rings, the root-mean-square deviation (RMSD) between the ring in question and similar rings identified by Mogul is calculated over all ring torsion angles. If the average RMSD is greater than 60 degrees and the minimal RMSD between the ring in question and any Mogul-identified rings is also greater than 60 degrees, then that ring is considered an outlier. The outliers are highlighted in purple. The color gray indicates Mogul did not find sufficient equivalents in the CSD to analyse the geometry.

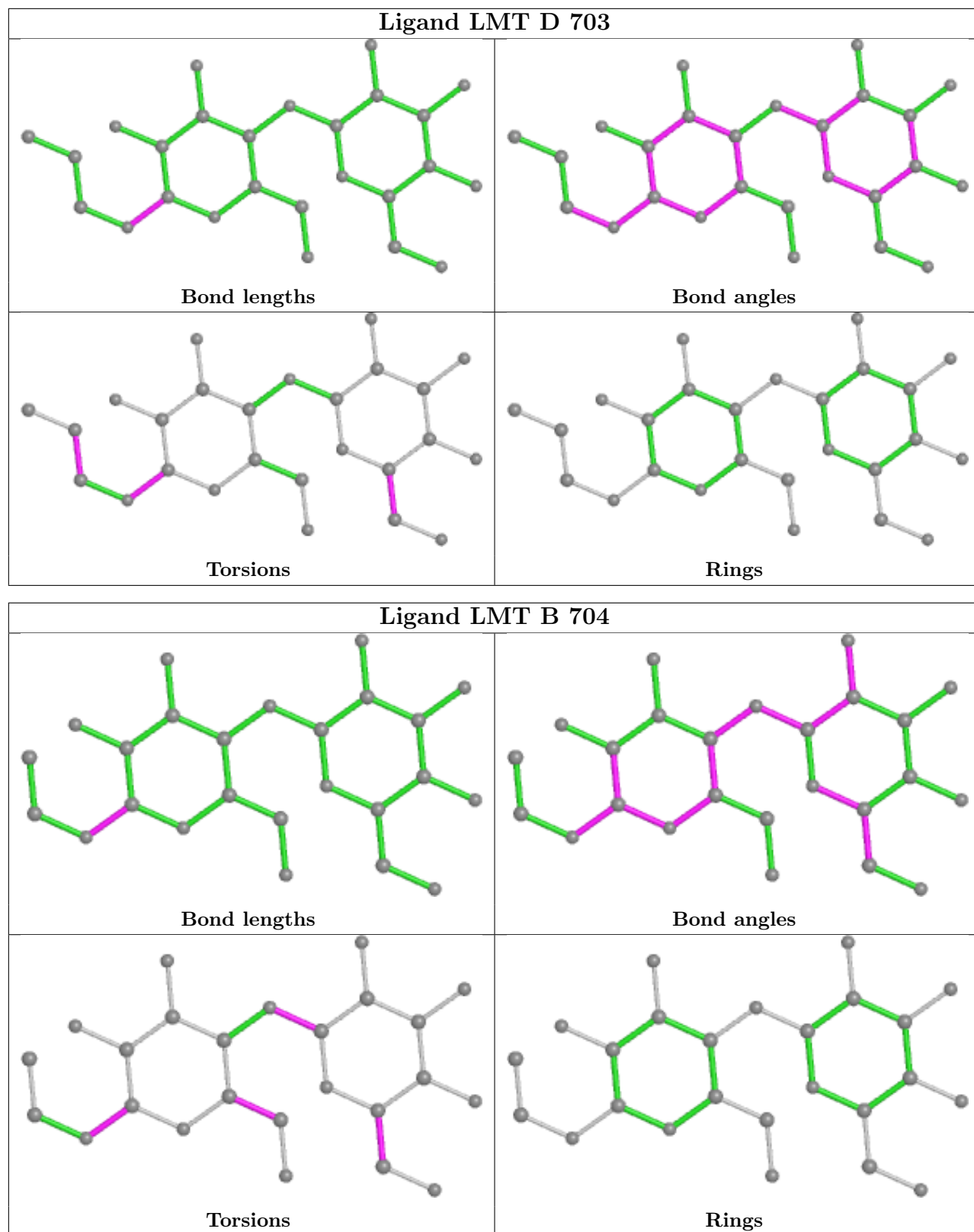












#### 4.7 Other polymers [i](#)

There are no such residues in this entry.

## 4.8 Polymer linkage issues

There are no chain breaks in this entry.

## 5 Fit of model and data

### 5.1 Protein, DNA and RNA chains

EDS failed to run properly - this section is therefore empty.

### 5.2 Non-standard residues in protein, DNA, RNA chains

EDS failed to run properly - this section is therefore empty.

### 5.3 Carbohydrates

EDS failed to run properly - this section is therefore empty.

### 5.4 Ligands

EDS failed to run properly - this section is therefore empty.

### 5.5 Other polymers

EDS failed to run properly - this section is therefore empty.