



# Full wwPDB X-ray Structure Validation Report ⓘ

Sep 13, 2020 – 10:36 AM BST

PDB ID : 2VBX  
Title : Feast or famine regulatory protein (Rv3291c) from *M. tuberculosis* complexed with L-Phenylalanine  
Authors : Shrivastava, T.; Ramachandran, R.  
Deposited on : 2007-09-18  
Resolution : 2.75 Å (reported)

This is a Full wwPDB X-ray Structure Validation Report for a publicly released PDB entry.

We welcome your comments at [validation@mail.wwpdb.org](mailto:validation@mail.wwpdb.org)

A user guide is available at

<https://www.wwpdb.org/validation/2017/XrayValidationReportHelp>

with specific help available everywhere you see the ⓘ symbol.

---

The following versions of software and data (see [references ⓘ](#)) were used in the production of this report:

MolProbity : 4.02b-467  
Mogul : 1.8.5 (274361), CSD as541be (2020)  
Xtriage (Phenix) : 1.13  
EDS : **FAILED**  
Percentile statistics : 20191225.v01 (using entries in the PDB archive December 25th 2019)  
Ideal geometry (proteins) : Engh & Huber (2001)  
Ideal geometry (DNA, RNA) : Parkinson et al. (1996)  
Validation Pipeline (wwPDB-VP) : 2.14.4.dev1

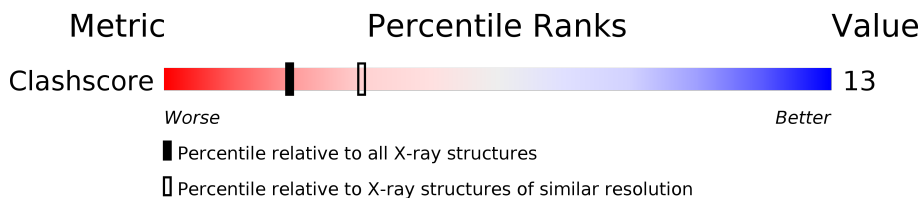
# 1 Overall quality at a glance i

The following experimental techniques were used to determine the structure:

*X-RAY DIFFRACTION*

The reported resolution of this entry is 2.75 Å.



Percentile scores (ranging between 0-100) for global validation metrics of the entry are shown in the following graphic. The table shows the number of entries on which the scores are based.



Metric	Whole archive (#Entries)	Similar resolution (#Entries, resolution range(Å))
Clashscore	141614	1277 (2.78-2.74)

The table below summarises the geometric issues observed across the polymeric chains and their fit to the electron density. The red, orange, yellow and green segments on the lower bar indicate the fraction of residues that contain outliers for  $\geq 3$ , 2, 1 and 0 types of geometric quality criteria respectively. A grey segment represents the fraction of residues that are not modelled. The numeric value for each fraction is indicated below the corresponding segment, with a dot representing fractions  $\leq 5\%$

Note EDS failed to run properly.

Mol	Chain	Length	Quality of chain
1	A	150	
1	B	150	

The following table lists non-polymeric compounds, carbohydrate monomers and non-standard residues in protein, DNA, RNA chains that are outliers for geometric or electron-density-fit criteria:

Mol	Type	Chain	Res	Chirality	Geometry	Clashes	Electron density
2	HIS	A	1152	-	-	X	-

## 2 Entry composition [i](#)

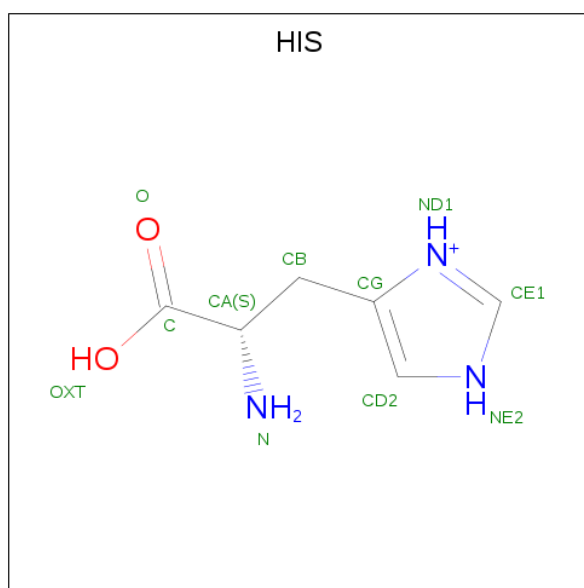
There are 3 unique types of molecules in this entry. The entry contains 2292 atoms, of which 0 are hydrogens and 0 are deuteriums.

In the tables below, the ZeroOcc column contains the number of atoms modelled with zero occupancy, the AltConf column contains the number of residues with at least one atom in alternate conformation and the Trace column contains the number of residues modelled with at most 2 atoms.

- Molecule 1 is a protein called TRANSCRIPTIONAL REGULATORY PROTEIN.

Mol	Chain	Residues	Atoms					ZeroOcc	AltConf	Trace
			Total	C	N	O	S			
1	A	147	Total	C	N	O	S	0	0	0
			1127	697	209	220	1			
1	B	147	Total	C	N	O	S	0	0	0
			1111	689	203	218	1			

- Molecule 2 is HISTIDINE (three-letter code: HIS) (formula: C<sub>6</sub>H<sub>10</sub>N<sub>3</sub>O<sub>2</sub>).



Mol	Chain	Residues	Atoms				ZeroOcc	AltConf
			Total	C	N	O		
2	A	1	Total	C	N	O	0	0
			11	6	3	2		
2	A	1	Total	C	N	O	0	0
			11	6	3	2		

- Molecule 3 is water.

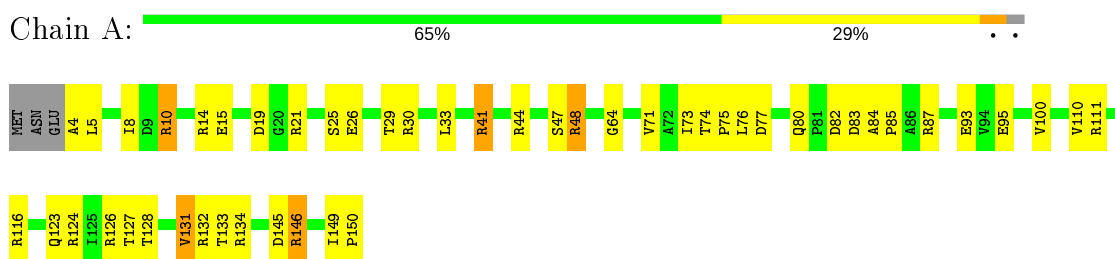
<b>Mol</b>	<b>Chain</b>	<b>Residues</b>	<b>Atoms</b>		<b>ZeroOcc</b>	<b>AltConf</b>
3	A	16	Total 16	O 16	0	0
3	B	16	Total 16	O 16	0	0

### 3 Residue-property plots

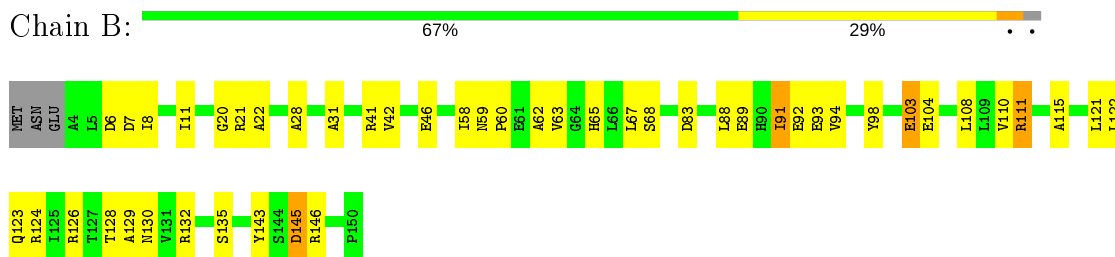
These plots are drawn for all protein, RNA, DNA and oligosaccharide chains in the entry. The first graphic for a chain summarises the proportions of the various outlier classes displayed in the second graphic. The second graphic shows the sequence view annotated by issues in geometry. Residues are color-coded according to the number of geometric quality criteria for which they contain at least one outlier: green = 0, yellow = 1, orange = 2 and red = 3 or more. Stretches of 2 or more consecutive residues without any outlier are shown as a green connector. Residues present in the sample, but not in the model, are shown in grey.

Note EDS failed to run properly.

- Molecule 1: TRANSCRIPTIONAL REGULATORY PROTEIN



- Molecule 1: TRANSCRIPTIONAL REGULATORY PROTEIN



## 4 Data and refinement statistics i

EDS failed to run properly - this section is therefore incomplete.

Property	Value	Source
Space group	P 42 21 2	Depositor
Cell constants a, b, c, $\alpha$ , $\beta$ , $\gamma$	100.90Å 100.90Å 99.29Å 90.00° 90.00° 90.00°	Depositor
Resolution (Å)	71.43 – 2.75	Depositor
% Data completeness (in resolution range)	97.6 (71.43-2.75)	Depositor
$R_{merge}$	0.11	Depositor
$R_{sym}$	(Not available)	Depositor
$\langle I/\sigma(I) \rangle$ <sup>1</sup>	2.56 (at 2.77Å)	Xtrriage
Refinement program	REFMAC 5.2.0005	Depositor
R, $R_{free}$	0.226 , 0.270	Depositor
Wilson B-factor (Å <sup>2</sup> )	48.0	Xtrriage
Anisotropy	0.122	Xtrriage
L-test for twinning <sup>2</sup>	$\langle  L  \rangle = 0.49$ , $\langle L^2 \rangle = 0.32$	Xtrriage
Estimated twinning fraction	0.022 for -h,-l,-k 0.010 for l,-k,h	Xtrriage
Total number of atoms	2292	wwPDB-VP
Average B, all atoms (Å <sup>2</sup> )	36.0	wwPDB-VP

Xtrriage's analysis on translational NCS is as follows: *The largest off-origin peak in the Patterson function is 6.53% of the height of the origin peak. No significant pseudotranslation is detected.*

<sup>1</sup> Intensities estimated from amplitudes.

<sup>2</sup> Theoretical values of  $\langle |L| \rangle$ ,  $\langle L^2 \rangle$  for acentric reflections are 0.5, 0.333 respectively for untwinned datasets, and 0.375, 0.2 for perfectly twinned datasets.

## 5 Model quality i

### 5.1 Standard geometry i

The Z score for a bond length (or angle) is the number of standard deviations the observed value is removed from the expected value. A bond length (or angle) with  $|Z| > 5$  is considered an outlier worth inspection. RMSZ is the root-mean-square of all Z scores of the bond lengths (or angles).

Mol	Chain	Bond lengths		Bond angles	
		RMSZ	# Z  >5	RMSZ	# Z  >5
1	A	1.52	8/1141 (0.7%)	1.60	27/1552 (1.7%)
1	B	1.41	5/1125 (0.4%)	1.40	13/1533 (0.8%)
All	All	1.46	13/2266 (0.6%)	1.51	40/3085 (1.3%)

All (13) bond length outliers are listed below:

Mol	Chain	Res	Type	Atoms	Z	Observed(Å)	Ideal(Å)
1	B	98	TYR	CD1-CE1	7.94	1.51	1.39
1	A	93	GLU	CB-CG	-6.85	1.39	1.52
1	B	143	TYR	CD1-CE1	6.56	1.49	1.39
1	A	116	ARG	CB-CG	6.21	1.69	1.52
1	B	123	GLN	CG-CD	5.87	1.64	1.51
1	A	110	VAL	CB-CG1	-5.85	1.40	1.52
1	A	77	ASP	CB-CG	5.74	1.63	1.51
1	A	26	GLU	CG-CD	5.63	1.60	1.51
1	A	146	ARG	CB-CG	-5.26	1.38	1.52
1	B	110	VAL	CB-CG1	-5.12	1.42	1.52
1	A	71	VAL	CB-CG2	-5.07	1.42	1.52
1	A	116	ARG	CG-CD	5.05	1.64	1.51
1	B	135	SER	CB-OG	-5.00	1.35	1.42

All (40) bond angle outliers are listed below:

Mol	Chain	Res	Type	Atoms	Z	Observed(°)	Ideal(°)
1	A	146	ARG	NE-CZ-NH1	12.46	126.53	120.30
1	A	111	ARG	NE-CZ-NH2	-10.29	115.15	120.30
1	B	111	ARG	NE-CZ-NH1	-9.42	115.59	120.30
1	A	111	ARG	NE-CZ-NH1	8.97	124.78	120.30
1	A	83	ASP	CB-CG-OD1	-8.26	110.87	118.30
1	B	104	GLU	N-CA-CB	-8.02	96.17	110.60
1	A	126	ARG	NE-CZ-NH1	7.83	124.22	120.30
1	B	130	ASN	CB-CA-C	6.72	123.84	110.40
1	A	146	ARG	CD-NE-CZ	6.49	132.69	123.60

*Continued on next page...*

Continued from previous page...

Mol	Chain	Res	Type	Atoms	Z	Observed(°)	Ideal(°)
1	A	87	ARG	NE-CZ-NH1	6.43	123.51	120.30
1	A	48	ARG	C-N-CA	-6.38	108.91	122.30
1	A	126	ARG	CG-CD-NE	-6.28	98.62	111.80
1	B	91	ILE	CB-CA-C	6.17	123.94	111.60
1	B	103	GLU	CA-C-N	-6.14	103.69	117.20
1	B	103	GLU	O-C-N	6.04	132.37	122.70
1	A	126	ARG	NE-CZ-NH2	-5.97	117.31	120.30
1	A	116	ARG	NE-CZ-NH1	5.93	123.27	120.30
1	A	19	ASP	CB-CG-OD2	-5.93	112.96	118.30
1	A	100	VAL	CG1-CB-CG2	5.88	120.31	110.90
1	B	111	ARG	CD-NE-CZ	-5.85	115.41	123.60
1	A	33	LEU	CB-CG-CD1	-5.81	101.12	111.00
1	B	145	ASP	N-CA-C	5.50	125.84	111.00
1	A	14	ARG	NE-CZ-NH1	5.45	123.02	120.30
1	B	94	VAL	CG1-CB-CG2	5.43	119.60	110.90
1	B	103	GLU	C-N-CA	-5.43	108.12	121.70
1	A	146	ARG	NE-CZ-NH2	-5.41	117.59	120.30
1	A	110	VAL	CG1-CB-CG2	5.38	119.52	110.90
1	A	41	ARG	NE-CZ-NH1	5.33	122.97	120.30
1	A	82	ASP	CB-CG-OD2	-5.30	113.53	118.30
1	A	145	ASP	C-N-CA	-5.24	108.59	121.70
1	A	64	GLY	N-CA-C	5.21	126.13	113.10
1	A	126	ARG	CD-NE-CZ	5.21	130.89	123.60
1	A	19	ASP	CB-CG-OD1	5.14	122.93	118.30
1	A	131	VAL	N-CA-CB	-5.13	100.21	111.50
1	A	80	GLN	C-N-CD	5.11	139.13	128.40
1	B	121	LEU	CB-CG-CD2	-5.10	102.33	111.00
1	B	91	ILE	CA-CB-CG2	5.09	121.07	110.90
1	A	10	ARG	NE-CZ-NH1	5.07	122.83	120.30
1	A	48	ARG	NE-CZ-NH2	-5.02	117.79	120.30
1	B	129	ALA	C-N-CA	-5.01	109.18	121.70

There are no chirality outliers.

There are no planarity outliers.

## 5.2 Too-close contacts

In the following table, the Non-H and H(model) columns list the number of non-hydrogen atoms and hydrogen atoms in the chain respectively. The H(added) column lists the number of hydrogen atoms added and optimized by MolProbity. The Clashes column lists the number of clashes within the asymmetric unit, whereas Symm-Clashes lists symmetry related clashes.



Mol	Chain	Non-H	H(model)	H(added)	Clashes	Symm-Clashes
1	A	1127	0	1130	24	0
1	B	1111	0	1104	33	0
2	A	22	0	12	7	0
3	A	16	0	0	10	0
3	B	16	0	0	3	0
All	All	2292	0	2246	59	0

The all-atom clashscore is defined as the number of clashes found per 1000 atoms (including hydrogen atoms). The all-atom clashscore for this structure is 13.

All (59) close contacts within the same asymmetric unit are listed below, sorted by their clash magnitude.

Atom-1	Atom-2	Interatomic distance (Å)	Clash overlap (Å)
1:B:132:ARG:HD3	3:B:2012:HOH:O	1.47	1.11
1:B:91:ILE:HD11	1:B:93:GLU:HG2	1.50	0.93
1:A:124:ARG:O	1:A:128:THR:HG23	1.77	0.84
2:A:1152:HIS:HA	3:A:2015:HOH:O	1.85	0.76
1:A:8:ILE:HB	1:A:41:ARG:NH2	2.00	0.76
1:B:21:ARG:O	1:B:22:ALA:O	2.07	0.73
1:A:134:ARG:HH12	2:A:1152:HIS:N	1.87	0.72
2:A:1152:HIS:CG	3:A:2015:HOH:O	2.43	0.71
1:B:21:ARG:O	1:B:22:ALA:C	2.30	0.69
1:A:21:ARG:NH1	1:B:20:GLY:O	2.25	0.69
1:A:15:GLU:OE1	1:A:30:ARG:NH1	2.25	0.68
1:B:63:VAL:HG12	1:B:63:VAL:O	1.94	0.68
2:A:1152:HIS:ND1	3:A:2015:HOH:O	2.27	0.67
1:B:28:ALA:HA	1:B:31:ALA:HB3	1.77	0.65
1:A:134:ARG:NH2	3:A:2011:HOH:O	2.32	0.62
1:B:124:ARG:HD3	3:B:2009:HOH:O	2.00	0.61
1:B:68:SER:OG	1:B:111:ARG:HD3	2.01	0.60
2:A:1152:HIS:CG	3:A:2011:HOH:O	2.57	0.57
2:A:1152:HIS:ND1	3:A:2011:HOH:O	2.33	0.57
1:B:91:ILE:CD1	1:B:93:GLU:HG2	2.30	0.57
2:A:1152:HIS:ND1	3:A:2009:HOH:O	2.27	0.56
3:A:2010:HOH:O	1:B:103:GLU:HG3	2.04	0.56
1:A:47:SER:C	1:A:48:ARG:O	2.44	0.53
1:A:84:ALA:HB3	1:A:85:PRO:HD3	1.94	0.50
1:B:42:VAL:O	1:B:46:GLU:HG3	2.12	0.50
1:B:60:PRO:O	1:B:65:HIS:HB2	2.12	0.49
1:B:59:ASN:HD22	1:B:62:ALA:HB2	1.78	0.49
1:B:67:LEU:HD12	1:B:115:ALA:HA	1.95	0.48
1:A:146:ARG:NH2	1:B:89:GLU:O	2.40	0.48

*Continued on next page...*

Continued from previous page...

Atom-1	Atom-2	Interatomic distance (Å)	Clash overlap (Å)
1:A:73:ILE:HG22	1:A:133:THR:HG22	1.95	0.48
1:A:10:ARG:NH1	1:A:150:PRO:O	2.47	0.47
1:B:91:ILE:HD12	1:B:92:GLU:N	2.30	0.47
1:A:95:GLU:HG2	1:B:145:ASP:HA	1.97	0.46
1:A:44:ARG:NH2	3:A:2004:HOH:O	2.48	0.46
1:B:63:VAL:O	1:B:63:VAL:CG1	2.64	0.45
1:A:76:LEU:HD23	1:A:76:LEU:HA	1.82	0.45
1:B:122:LEU:O	1:B:126:ARG:HG3	2.17	0.45
1:B:128:THR:HG21	3:B:2001:HOH:O	2.17	0.44
1:A:123:GLN:O	1:A:127:THR:HG23	2.17	0.44
1:B:11:ILE:H	1:B:11:ILE:HG12	1.59	0.44
1:A:8:ILE:CB	1:A:41:ARG:NH2	2.78	0.44
1:B:59:ASN:ND2	1:B:62:ALA:HB2	2.33	0.43
1:A:76:LEU:HD21	1:A:132:ARG:HG3	2.00	0.43
1:B:146:ARG:HH11	1:B:146:ARG:HB2	1.83	0.43
1:A:134:ARG:NH2	3:A:2009:HOH:O	2.24	0.43
1:A:149:ILE:HG23	1:B:63:VAL:CG1	2.49	0.43
1:A:4:ALA:O	1:A:5:LEU:HD23	2.19	0.42
1:A:149:ILE:HA	1:A:150:PRO:HD3	1.81	0.42
1:B:111:ARG:HH11	1:B:111:ARG:HD3	1.55	0.42
1:A:131:VAL:HG13	1:A:132:ARG:O	2.20	0.42
1:B:124:ARG:O	1:B:128:THR:HG23	2.20	0.41
1:B:83:ASP:N	1:B:83:ASP:OD2	2.49	0.41
1:A:25:SER:O	1:A:29:THR:HG23	2.19	0.41
1:B:58:ILE:HG21	1:B:63:VAL:HG21	2.01	0.41
1:B:6:ASP:OD1	1:B:7:ASP:N	2.54	0.41
1:B:8:ILE:HB	1:B:41:ARG:HH21	1.85	0.41
1:B:67:LEU:HD23	1:B:67:LEU:HA	1.87	0.41
1:B:88:LEU:HD13	1:B:108:LEU:HD11	2.02	0.41
1:A:74:THR:HA	1:A:75:PRO:HD3	1.87	0.40

There are no symmetry-related clashes.

## 5.3 Torsion angles [i](#)

### 5.3.1 Protein backbone [i](#)

There are no protein backbone outliers to report in this entry.

### 5.3.2 Protein sidechains [i](#)

There are no protein residues with a non-rotameric sidechain to report in this entry.

### 5.3.3 RNA [i](#)

There are no RNA molecules in this entry.

## 5.4 Non-standard residues in protein, DNA, RNA chains [i](#)

There are no non-standard protein/DNA/RNA residues in this entry.

## 5.5 Carbohydrates [i](#)

There are no monosaccharides in this entry.

## 5.6 Ligand geometry [i](#)

2 ligands are modelled in this entry.

In the following table, the Counts columns list the number of bonds (or angles) for which Mogul statistics could be retrieved, the number of bonds (or angles) that are observed in the model and the number of bonds (or angles) that are defined in the Chemical Component Dictionary. The Link column lists molecule types, if any, to which the group is linked. The Z score for a bond length (or angle) is the number of standard deviations the observed value is removed from the expected value. A bond length (or angle) with  $|Z| > 2$  is considered an outlier worth inspection. RMSZ is the root-mean-square of all Z scores of the bond lengths (or angles).

Mol	Type	Chain	Res	Link	Bond lengths			Bond angles		
					Counts	RMSZ	# Z  > 2	Counts	RMSZ	# Z  > 2
2	HIS	A	1151	-	4,11,11	0.54	0	3,14,14	1.49	1 (33%)
2	HIS	A	1152	-	4,11,11	0.70	0	3,14,14	2.98	2 (66%)

In the following table, the Chirals column lists the number of chiral outliers, the number of chiral centers analysed, the number of these observed in the model and the number defined in the Chemical Component Dictionary. Similar counts are reported in the Torsion and Rings columns. '-' means no outliers of that kind were identified.

Mol	Type	Chain	Res	Link	Chirals	Torsions	Rings
2	HIS	A	1151	-	-	2/4/8/8	0/1/1/1
2	HIS	A	1152	-	-	2/4/8/8	0/1/1/1

There are no bond length outliers.

All (3) bond angle outliers are listed below:

Mol	Chain	Res	Type	Atoms	Z	Observed( $^{\circ}$ )	Ideal( $^{\circ}$ )
2	A	1152	HIS	CB-CA-C	4.60	118.13	110.69
2	A	1151	HIS	CD2-NE2-CE1	2.29	109.36	105.78
2	A	1152	HIS	CD2-NE2-CE1	2.18	109.18	105.78

There are no chirality outliers.

All (4) torsion outliers are listed below:

Mol	Chain	Res	Type	Atoms
2	A	1151	HIS	CA-CB-CG-ND1
2	A	1152	HIS	C-CA-CB-CG
2	A	1152	HIS	CA-CB-CG-ND1
2	A	1151	HIS	N-CA-CB-CG

There are no ring outliers.

1 monomer is involved in 7 short contacts:

Mol	Chain	Res	Type	Clashes	Symm-Clashes
2	A	1152	HIS	7	0

## 5.7 Other polymers [i](#)

There are no such residues in this entry.

## 5.8 Polymer linkage issues [i](#)

There are no chain breaks in this entry.

## 6 Fit of model and data

### 6.1 Protein, DNA and RNA chains

EDS failed to run properly - this section is therefore empty.

### 6.2 Non-standard residues in protein, DNA, RNA chains

EDS failed to run properly - this section is therefore empty.

### 6.3 Carbohydrates

EDS failed to run properly - this section is therefore empty.

### 6.4 Ligands

EDS failed to run properly - this section is therefore empty.

### 6.5 Other polymers

EDS failed to run properly - this section is therefore empty.