



Full wwPDB X-ray Structure Validation Report ⓘ

Sep 13, 2020 – 10:36 AM BST

PDB ID : 2VBY
Title : Feast or famine regulatory protein (Rv3291c) from *M. tuberculosis* complexed with L-Tyrosine
Authors : Shrivastava, T.; Ramachandran, R.
Deposited on : 2007-09-18
Resolution : 2.80 Å (reported)

This is a Full wwPDB X-ray Structure Validation Report for a publicly released PDB entry.

We welcome your comments at validation@mail.wwpdb.org

A user guide is available at

<https://www.wwpdb.org/validation/2017/XrayValidationReportHelp>

with specific help available everywhere you see the ⓘ symbol.

The following versions of software and data (see [references ⓘ](#)) were used in the production of this report:

MolProbity : 4.02b-467
Mogul : 1.8.5 (274361), CSD as541be (2020)
Xtriage (Phenix) : 1.13
EDS : **FAILED**
Percentile statistics : 20191225.v01 (using entries in the PDB archive December 25th 2019)
Ideal geometry (proteins) : Engh & Huber (2001)
Ideal geometry (DNA, RNA) : Parkinson et al. (1996)
Validation Pipeline (wwPDB-VP) : 2.14.4.dev1

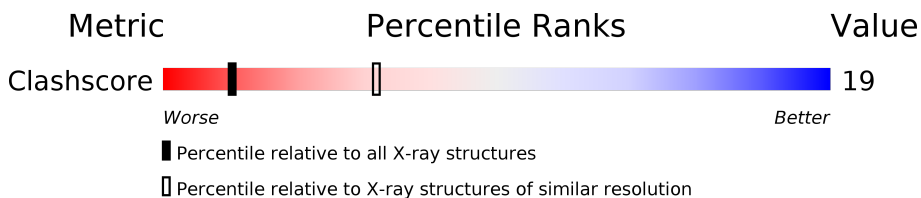
1 Overall quality at a glance

The following experimental techniques were used to determine the structure:

X-RAY DIFFRACTION

The reported resolution of this entry is 2.80 Å.



Percentile scores (ranging between 0-100) for global validation metrics of the entry are shown in the following graphic. The table shows the number of entries on which the scores are based.



Metric	Whole archive (#Entries)	Similar resolution (#Entries, resolution range(Å))
Clashscore	141614	3569 (2.80-2.80)

The table below summarises the geometric issues observed across the polymeric chains and their fit to the electron density. The red, orange, yellow and green segments on the lower bar indicate the fraction of residues that contain outliers for ≥ 3 , 2, 1 and 0 types of geometric quality criteria respectively. A grey segment represents the fraction of residues that are not modelled. The numeric value for each fraction is indicated below the corresponding segment, with a dot representing fractions $\leq 5\%$

Note EDS failed to run properly.

Mol	Chain	Length	Quality of chain
1	A	150	
1	B	150	

2 Entry composition [i](#)

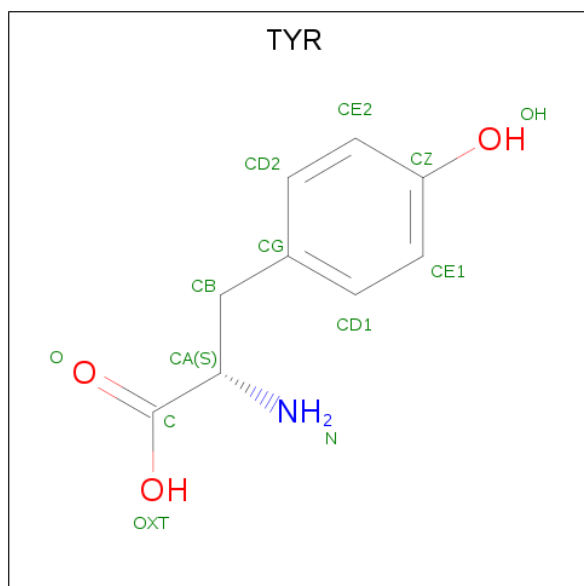
There are 3 unique types of molecules in this entry. The entry contains 2277 atoms, of which 0 are hydrogens and 0 are deuteriums.

In the tables below, the ZeroOcc column contains the number of atoms modelled with zero occupancy, the AltConf column contains the number of residues with at least one atom in alternate conformation and the Trace column contains the number of residues modelled with at most 2 atoms.

- Molecule 1 is a protein called TRANSCRIPTIONAL REGULATORY PROTEIN.

Mol	Chain	Residues	Atoms					ZeroOcc	AltConf	Trace
			Total	C	N	O	S			
1	A	147	Total	C	N	O	S	0	0	0
			1127	697	209	220	1			
1	B	147	Total	C	N	O	S	0	0	0
			1111	689	203	218	1			

- Molecule 2 is TYROSINE (three-letter code: TYR) (formula: C₉H₁₁NO₃).



Mol	Chain	Residues	Atoms				ZeroOcc	AltConf
			Total	C	N	O		
2	A	1	Total	C	N	O	0	0
			13	9	1	3		

- Molecule 3 is water.

Mol	Chain	Residues	Atoms	ZeroOcc	AltConf
3	A	13	Total	O	0
			13	13	

Continued on next page...

Continued from previous page...

Mol	Chain	Residues	Atoms		ZeroOcc	AltConf
3	B	13	Total	O	0	0
			13	13		

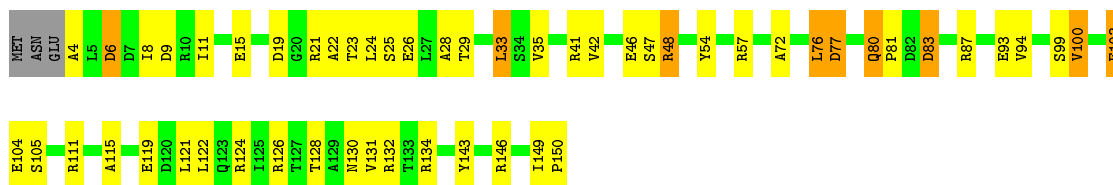
3 Residue-property plots [i](#)

These plots are drawn for all protein, RNA, DNA and oligosaccharide chains in the entry. The first graphic for a chain summarises the proportions of the various outlier classes displayed in the second graphic. The second graphic shows the sequence view annotated by issues in geometry. Residues are color-coded according to the number of geometric quality criteria for which they contain at least one outlier: green = 0, yellow = 1, orange = 2 and red = 3 or more. Stretches of 2 or more consecutive residues without any outlier are shown as a green connector. Residues present in the sample, but not in the model, are shown in grey.

Note EDS failed to run properly.

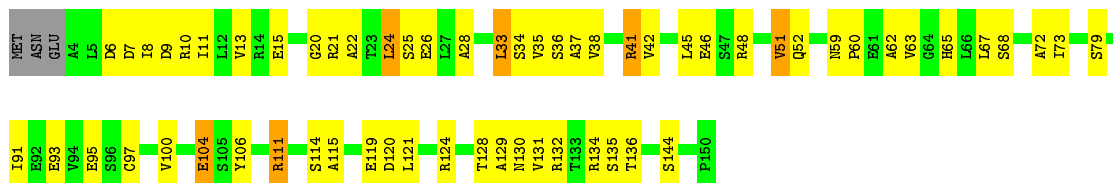
- Molecule 1: TRANSCRIPTIONAL REGULATORY PROTEIN

Chain A:  62% 30% 6%



- Molecule 1: TRANSCRIPTIONAL REGULATORY PROTEIN

Chain B:  57% 37%



4 Data and refinement statistics i

EDS failed to run properly - this section is therefore incomplete.

Property	Value	Source
Space group	P 42 21 2	Depositor
Cell constants a, b, c, α , β , γ	100.81Å 100.81Å 99.36Å 90.00° 90.00° 90.00°	Depositor
Resolution (Å)	71.25 – 2.80	Depositor
% Data completeness (in resolution range)	96.9 (71.25-2.80)	Depositor
R_{merge}	0.12	Depositor
R_{sym}	(Not available)	Depositor
$\langle I/\sigma(I) \rangle$ ¹	2.35 (at 2.79Å)	Xtrriage
Refinement program	REFMAC 5.2.0005	Depositor
R, R_{free}	0.202 , 0.261	Depositor
Wilson B-factor (Å ²)	46.0	Xtrriage
Anisotropy	0.122	Xtrriage
L-test for twinning ²	$\langle L \rangle = 0.48$, $\langle L^2 \rangle = 0.31$	Xtrriage
Estimated twinning fraction	0.027 for -h,-l,-k 0.010 for l,-k,h	Xtrriage
Total number of atoms	2277	wwPDB-VP
Average B, all atoms (Å ²)	42.0	wwPDB-VP

Xtrriage's analysis on translational NCS is as follows: *The largest off-origin peak in the Patterson function is 6.10% of the height of the origin peak. No significant pseudotranslation is detected.*

¹ Intensities estimated from amplitudes.

² Theoretical values of $\langle |L| \rangle$, $\langle L^2 \rangle$ for acentric reflections are 0.5, 0.333 respectively for untwinned datasets, and 0.375, 0.2 for perfectly twinned datasets.

5 Model quality i

5.1 Standard geometry i

The Z score for a bond length (or angle) is the number of standard deviations the observed value is removed from the expected value. A bond length (or angle) with $|Z| > 5$ is considered an outlier worth inspection. RMSZ is the root-mean-square of all Z scores of the bond lengths (or angles).

Mol	Chain	Bond lengths		Bond angles	
		RMSZ	# Z >5	RMSZ	# Z >5
1	A	1.64	14/1141 (1.2%)	1.64	18/1552 (1.2%)
1	B	1.68	15/1125 (1.3%)	1.46	8/1533 (0.5%)
All	All	1.66	29/2266 (1.3%)	1.55	26/3085 (0.8%)

Chiral center outliers are detected by calculating the chiral volume of a chiral center and verifying if the center is modelled as a planar moiety or with the opposite hand. A planarity outlier is detected by checking planarity of atoms in a peptide group, atoms in a mainchain group or atoms of a sidechain that are expected to be planar.

Mol	Chain	#Chirality outliers	#Planarity outliers
1	A	0	3

All (29) bond length outliers are listed below:

Mol	Chain	Res	Type	Atoms	Z	Observed(Å)	Ideal(Å)
1	A	119	GLU	CB-CG	-8.75	1.35	1.52
1	B	104	GLU	CG-CD	8.11	1.64	1.51
1	B	134	ARG	CG-CD	8.09	1.72	1.51
1	A	115	ALA	CA-CB	-7.54	1.36	1.52
1	B	35	VAL	CB-CG2	7.28	1.68	1.52
1	A	146	ARG	CG-CD	-6.96	1.34	1.51
1	A	131	VAL	CB-CG1	-6.68	1.38	1.52
1	A	132	ARG	CB-CG	-6.42	1.35	1.52
1	A	131	VAL	CB-CG2	-6.36	1.39	1.52
1	B	100	VAL	CB-CG1	-5.89	1.40	1.52
1	B	51	VAL	CB-CG2	-5.79	1.40	1.52
1	A	103	GLU	CD-OE2	5.78	1.32	1.25
1	A	72	ALA	CA-CB	-5.73	1.40	1.52
1	B	41	ARG	CZ-NH1	5.71	1.40	1.33
1	A	26	GLU	CG-CD	5.66	1.60	1.51
1	B	134	ARG	CZ-NH1	5.62	1.40	1.33
1	B	97	CYS	CB-SG	-5.60	1.72	1.81
1	A	103	GLU	CG-CD	5.59	1.60	1.51

Continued on next page...

Continued from previous page...

Mol	Chain	Res	Type	Atoms	Z	Observed(Å)	Ideal(Å)
1	B	135	SER	CB-OG	-5.54	1.35	1.42
1	A	94	VAL	CB-CG1	-5.53	1.41	1.52
1	B	95	GLU	CD-OE2	5.52	1.31	1.25
1	B	111	ARG	CG-CD	-5.46	1.38	1.51
1	B	79	SER	C-O	-5.42	1.13	1.23
1	A	100	VAL	CB-CG2	-5.42	1.41	1.52
1	B	106	TYR	CB-CG	-5.37	1.43	1.51
1	B	130	ASN	CB-CG	5.31	1.63	1.51
1	B	33	LEU	CG-CD2	5.25	1.71	1.51
1	A	126	ARG	CG-CD	-5.19	1.39	1.51
1	A	143	TYR	CD2-CE2	5.02	1.46	1.39

All (26) bond angle outliers are listed below:

Mol	Chain	Res	Type	Atoms	Z	Observed(°)	Ideal(°)
1	A	146	ARG	NE-CZ-NH1	18.98	129.79	120.30
1	A	146	ARG	NE-CZ-NH2	-14.08	113.26	120.30
1	B	24	LEU	CA-CB-CG	8.29	134.38	115.30
1	A	111	ARG	NE-CZ-NH2	-8.25	116.17	120.30
1	B	120	ASP	CB-CG-OD2	-8.23	110.89	118.30
1	A	146	ARG	CD-NE-CZ	7.28	133.79	123.60
1	B	130	ASN	CB-CA-C	7.22	124.84	110.40
1	B	41	ARG	NE-CZ-NH2	-7.21	116.69	120.30
1	A	111	ARG	NE-CZ-NH1	6.88	123.74	120.30
1	A	33	LEU	CB-CG-CD1	-6.81	99.43	111.00
1	A	48	ARG	C-N-CA	-6.62	108.40	122.30
1	A	83	ASP	CB-CG-OD1	-6.23	112.69	118.30
1	B	129	ALA	C-N-CA	-6.14	106.34	121.70
1	A	19	ASP	CB-CG-OD2	-6.11	112.80	118.30
1	B	41	ARG	NE-CZ-NH1	5.72	123.16	120.30
1	A	83	ASP	N-CA-CB	-5.71	100.33	110.60
1	B	144	SER	N-CA-CB	-5.68	101.97	110.50
1	A	77	ASP	CB-CG-OD1	5.58	123.33	118.30
1	A	131	VAL	N-CA-CB	-5.49	99.43	111.50
1	B	114	SER	N-CA-CB	-5.43	102.35	110.50
1	A	9	ASP	CB-CG-OD1	5.37	123.13	118.30
1	A	76	LEU	CB-CG-CD2	-5.33	101.95	111.00
1	A	6	ASP	CB-CG-OD1	5.17	122.95	118.30
1	A	77	ASP	CB-CG-OD2	-5.15	113.67	118.30
1	A	41	ARG	NE-CZ-NH2	5.15	122.87	120.30
1	A	94	VAL	CG1-CB-CG2	5.13	119.11	110.90

There are no chirality outliers.

All (3) planarity outliers are listed below:

Mol	Chain	Res	Type	Group
1	A	130	ASN	Peptide
1	A	47	SER	Peptide
1	A	80	GLN	Peptide

5.2 Too-close contacts [i](#)

In the following table, the Non-H and H(model) columns list the number of non-hydrogen atoms and hydrogen atoms in the chain respectively. The H(added) column lists the number of hydrogen atoms added and optimized by MolProbity. The Clashes column lists the number of clashes within the asymmetric unit, whereas Symm-Clashes lists symmetry related clashes.

Mol	Chain	Non-H	H(model)	H(added)	Clashes	Symm-Clashes
1	A	1127	0	1130	41	0
1	B	1111	0	1104	46	0
2	A	13	0	8	0	0
3	A	13	0	0	3	0
3	B	13	0	0	2	0
All	All	2277	0	2242	84	0

The all-atom clashscore is defined as the number of clashes found per 1000 atoms (including hydrogen atoms). The all-atom clashscore for this structure is 19.

All (84) close contacts within the same asymmetric unit are listed below, sorted by their clash magnitude.

Atom-1	Atom-2	Interatomic distance (Å)	Clash overlap (Å)
1:A:80:GLN:H	1:A:80:GLN:CD	1.50	1.15
1:A:80:GLN:NE2	1:A:80:GLN:H	1.51	1.07
1:A:80:GLN:NE2	1:A:80:GLN:N	2.05	1.04
1:A:87:ARG:HH11	1:A:87:ARG:HB3	1.18	1.03
1:A:80:GLN:N	1:A:80:GLN:CD	2.26	0.89
1:A:57:ARG:CB	3:A:2003:HOH:O	2.21	0.88
1:B:124:ARG:O	1:B:128:THR:HG23	1.74	0.87
1:A:87:ARG:HH11	1:A:87:ARG:CB	1.89	0.85
1:B:124:ARG:HD3	3:B:2008:HOH:O	1.77	0.85
1:A:23:THR:HG22	3:A:2001:HOH:O	1.76	0.84
1:B:42:VAL:O	1:B:46:GLU:HG3	1.76	0.84
1:A:103:GLU:HB2	3:A:2005:HOH:O	1.77	0.84
1:A:124:ARG:O	1:A:128:THR:HG23	1.88	0.73

Continued on next page...

Continued from previous page...

Atom-1	Atom-2	Interatomic distance (Å)	Clash overlap (Å)
1:B:60:PRO:O	1:B:65:HIS:HB2	1.90	0.71
1:B:59:ASN:ND2	1:B:62:ALA:H	1.89	0.70
1:B:124:ARG:CD	3:B:2008:HOH:O	2.37	0.70
1:B:7:ASP:HA	1:B:10:ARG:HB2	1.73	0.69
1:A:25:SER:O	1:A:29:THR:HG23	1.93	0.68
1:A:57:ARG:O	1:B:52:GLN:HG3	1.95	0.66
1:A:87:ARG:HB3	1:A:87:ARG:NH1	2.03	0.65
1:A:124:ARG:O	1:A:128:THR:CG2	2.48	0.62
1:A:21:ARG:NH1	1:B:20:GLY:O	2.33	0.61
1:B:8:ILE:HG21	1:B:41:ARG:HH21	1.64	0.60
1:B:63:VAL:HG12	1:B:63:VAL:O	2.02	0.59
1:B:72:ALA:HB1	1:B:104:GLU:HG2	1.85	0.58
1:A:100:VAL:HG22	1:B:136:THR:HG22	1.86	0.58
1:B:8:ILE:CG2	1:B:41:ARG:HH21	2.17	0.58
1:B:91:ILE:HD12	1:B:93:GLU:OE1	2.04	0.57
1:B:59:ASN:HD22	1:B:62:ALA:HB2	1.68	0.57
1:B:21:ARG:O	1:B:22:ALA:C	2.45	0.55
1:B:124:ARG:O	1:B:128:THR:CG2	2.50	0.55
1:A:87:ARG:HH11	1:A:87:ARG:CG	2.21	0.53
1:B:59:ASN:HD22	1:B:62:ALA:CB	2.22	0.53
1:B:59:ASN:HD22	1:B:62:ALA:H	1.55	0.53
1:A:28:ALA:HB1	1:A:33:LEU:O	2.09	0.53
1:A:6:ASP:OD1	1:A:8:ILE:HB	2.09	0.53
1:B:28:ALA:HB1	1:B:33:LEU:O	2.08	0.53
1:B:15:GLU:OE1	1:B:15:GLU:HA	2.08	0.53
1:B:73:ILE:HD12	1:B:131:VAL:HG11	1.92	0.51
1:B:6:ASP:O	1:B:8:ILE:N	2.44	0.51
1:B:132:ARG:HG2	1:B:132:ARG:HH11	1.76	0.51
1:A:80:GLN:NE2	1:A:80:GLN:CA	2.72	0.50
1:A:11:ILE:O	1:A:15:GLU:HG2	2.12	0.50
1:B:34:SER:O	1:B:36:SER:N	2.45	0.49
1:A:87:ARG:NH1	1:A:87:ARG:CG	2.75	0.49
1:A:21:ARG:O	1:A:22:ALA:C	2.51	0.49
1:A:99:SER:HA	1:A:105:SER:O	2.12	0.48
1:B:63:VAL:O	1:B:63:VAL:CG1	2.62	0.48
1:A:76:LEU:HD23	1:A:76:LEU:HA	1.33	0.47
1:B:21:ARG:O	1:B:22:ALA:O	2.33	0.47
1:B:68:SER:OG	1:B:111:ARG:HD3	2.14	0.46
1:B:34:SER:C	1:B:36:SER:N	2.69	0.46
1:B:24:LEU:O	1:B:38:VAL:HG11	2.16	0.46
1:B:46:GLU:HG2	1:B:51:VAL:CG2	2.46	0.46

Continued on next page...

Continued from previous page...

Atom-1	Atom-2	Interatomic distance (Å)	Clash overlap (Å)
1:B:8:ILE:CG2	1:B:41:ARG:NH2	2.78	0.46
1:B:33:LEU:HD22	1:B:37:ALA:HB3	1.97	0.46
1:A:24:LEU:HB3	1:A:35:VAL:HG13	1.98	0.45
1:B:9:ASP:O	1:B:13:VAL:HG22	2.17	0.45
1:A:80:GLN:HB2	1:A:81:PRO:O	2.16	0.45
1:A:93:GLU:HG3	1:A:121:LEU:HD13	2.00	0.44
1:B:72:ALA:CB	1:B:104:GLU:HG2	2.45	0.44
1:B:119:GLU:O	1:B:119:GLU:HG3	2.17	0.44
1:B:45:LEU:O	1:B:48:ARG:O	2.36	0.44
1:A:21:ARG:NH1	1:A:21:ARG:HG2	2.33	0.44
1:A:83:ASP:HB3	1:A:87:ARG:HD2	2.00	0.44
1:B:37:ALA:O	1:B:41:ARG:HG2	2.17	0.44
1:A:21:ARG:CG	1:A:21:ARG:HH11	2.31	0.44
1:B:67:LEU:HD12	1:B:115:ALA:N	2.32	0.43
1:A:149:ILE:HA	1:A:150:PRO:HD3	1.81	0.42
1:A:104:GLU:CD	1:A:134:ARG:HH21	2.22	0.42
1:A:122:LEU:HA	1:A:122:LEU:HD23	1.84	0.42
1:A:21:ARG:O	1:A:22:ALA:O	2.38	0.42
1:A:24:LEU:HD12	1:A:24:LEU:HA	1.85	0.41
1:B:6:ASP:O	1:B:9:ASP:N	2.53	0.41
1:B:51:VAL:CG2	1:B:51:VAL:O	2.68	0.41
1:A:42:VAL:O	1:A:46:GLU:HG3	2.20	0.41
1:A:4:ALA:O	1:A:48:ARG:NH2	2.53	0.41
1:B:121:LEU:HA	1:B:121:LEU:HD12	1.71	0.41
1:A:77:ASP:C	1:A:77:ASP:OD1	2.58	0.41
1:B:11:ILE:H	1:B:11:ILE:HG12	1.72	0.41
1:B:7:ASP:O	1:B:11:ILE:HG12	2.20	0.41
1:A:21:ARG:C	1:A:22:ALA:O	2.59	0.41
1:B:25:SER:OG	1:B:26:GLU:N	2.53	0.41
1:A:54:TYR:CD1	1:A:54:TYR:N	2.90	0.40

There are no symmetry-related clashes.

5.3 Torsion angles [i](#)

5.3.1 Protein backbone [i](#)

There are no protein backbone outliers to report in this entry.

5.3.2 Protein sidechains [i](#)

There are no protein residues with a non-rotameric sidechain to report in this entry.

5.3.3 RNA [i](#)

There are no RNA molecules in this entry.

5.4 Non-standard residues in protein, DNA, RNA chains [i](#)

There are no non-standard protein/DNA/RNA residues in this entry.

5.5 Carbohydrates [i](#)

There are no monosaccharides in this entry.

5.6 Ligand geometry [i](#)

1 ligand is modelled in this entry.

In the following table, the Counts columns list the number of bonds (or angles) for which Mogul statistics could be retrieved, the number of bonds (or angles) that are observed in the model and the number of bonds (or angles) that are defined in the Chemical Component Dictionary. The Link column lists molecule types, if any, to which the group is linked. The Z score for a bond length (or angle) is the number of standard deviations the observed value is removed from the expected value. A bond length (or angle) with $|Z| > 2$ is considered an outlier worth inspection. RMSZ is the root-mean-square of all Z scores of the bond lengths (or angles).

Mol	Type	Chain	Res	Link	Bond lengths			Bond angles		
					Counts	RMSZ	$\# Z > 2$	Counts	RMSZ	$\# Z > 2$
2	TYR	A	1153	-	10,13,13	0.87	0	12,17,17	0.80	1 (8%)

In the following table, the Chirals column lists the number of chiral outliers, the number of chiral centers analysed, the number of these observed in the model and the number defined in the Chemical Component Dictionary. Similar counts are reported in the Torsion and Rings columns. '-' means no outliers of that kind were identified.

Mol	Type	Chain	Res	Link	Chirals	Torsions	Rings
2	TYR	A	1153	-	-	2/4/8/8	0/1/1/1

There are no bond length outliers.

All (1) bond angle outliers are listed below:

Mol	Chain	Res	Type	Atoms	Z	Observed($^{\circ}$)	Ideal($^{\circ}$)
2	A	1153	TYR	CB-CA-C	-2.30	106.96	110.69

There are no chirality outliers.

All (2) torsion outliers are listed below:

Mol	Chain	Res	Type	Atoms
2	A	1153	TYR	CA-CB-CG-CD2
2	A	1153	TYR	CA-CB-CG-CD1

There are no ring outliers.

No monomer is involved in short contacts.

5.7 Other polymers [i](#)

There are no such residues in this entry.

5.8 Polymer linkage issues [i](#)

There are no chain breaks in this entry.

6 Fit of model and data

6.1 Protein, DNA and RNA chains

EDS failed to run properly - this section is therefore empty.

6.2 Non-standard residues in protein, DNA, RNA chains

EDS failed to run properly - this section is therefore empty.

6.3 Carbohydrates

EDS failed to run properly - this section is therefore empty.

6.4 Ligands

EDS failed to run properly - this section is therefore empty.

6.5 Other polymers

EDS failed to run properly - this section is therefore empty.