



Full wwPDB X-ray Structure Validation Report ⓘ

Oct 4, 2023 – 11:13 PM EDT

PDB ID : 6VBN
Title : Crystal Structure of hTDO2 bound to inhibitor GNE1
Authors : Harris, S.F.; Oh, A.
Deposited on : 2019-12-19
Resolution : 3.18 Å(reported)

This is a Full wwPDB X-ray Structure Validation Report for a publicly released PDB entry.

We welcome your comments at validation@mail.wwpdb.org

A user guide is available at

<https://www.wwpdb.org/validation/2017/XrayValidationReportHelp>

with specific help available everywhere you see the ⓘ symbol.

The types of validation reports are described at

<http://www.wwpdb.org/validation/2017/FAQs#types>.

The following versions of software and data (see [references ⓘ](#)) were used in the production of this report:

MolProbity : **FAILED**
Mogul : 1.8.5 (274361), CSD as541be (2020)
Xtrriage (Phenix) : 1.13
EDS : **FAILED**
buster-report : 1.1.7 (2018)
Percentile statistics : 20191225.v01 (using entries in the PDB archive December 25th 2019)
Ideal geometry (proteins) : Engh & Huber (2001)
Ideal geometry (DNA, RNA) : Parkinson et al. (1996)
Validation Pipeline (wwPDB-VP) : 2.35.1

1 Overall quality at a glance

The following experimental techniques were used to determine the structure:

X-RAY DIFFRACTION

The reported resolution of this entry is 3.18 Å.

There are no overall percentile quality scores available for this entry.

MolProbity and EDS failed to run properly - the sequence quality summary graphics cannot be shown.

2 Entry composition i

There are 4 unique types of molecules in this entry. The entry contains 11885 atoms, of which 12 are hydrogens and 0 are deuteriums.

In the tables below, the ZeroOcc column contains the number of atoms modelled with zero occupancy, the AltConf column contains the number of residues with at least one atom in alternate conformation and the Trace column contains the number of residues modelled with at most 2 atoms.

- Molecule 1 is a protein called Tryptophan 2,3-dioxygenase.

Mol	Chain	Residues	Atoms					ZeroOcc	AltConf	Trace
			Total	C	N	O	S			
1	A	344	2899	1858	509	521	11	0	0	0
1	B	343	2892	1853	508	520	11	0	0	0
1	C	345	2906	1862	510	523	11	0	0	0
1	D	343	2892	1853	508	520	11	0	0	0

There are 56 discrepancies between the modelled and reference sequences:

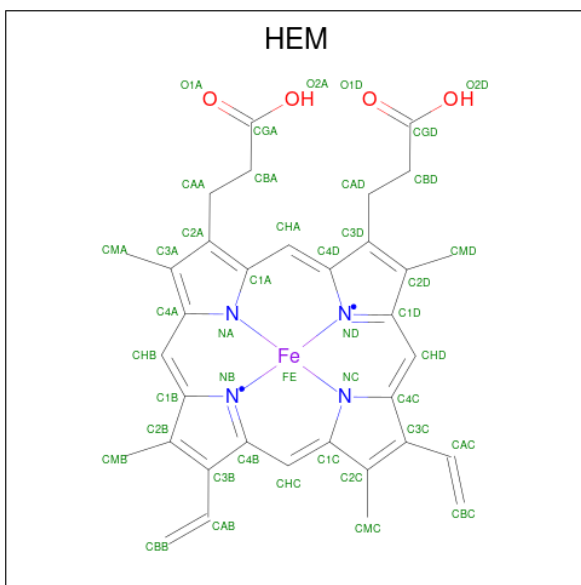
Chain	Residue	Modelled	Actual	Comment	Reference
A	15	MET	-	expression tag	UNP P48775
A	16	GLY	-	expression tag	UNP P48775
A	17	SER	-	expression tag	UNP P48775
A	389	GLY	-	expression tag	UNP P48775
A	390	ASN	-	expression tag	UNP P48775
A	391	SER	-	expression tag	UNP P48775
A	392	ASP	-	expression tag	UNP P48775
A	393	TYR	-	expression tag	UNP P48775
A	394	LYS	-	expression tag	UNP P48775
A	395	ASP	-	expression tag	UNP P48775
A	396	ASP	-	expression tag	UNP P48775
A	397	ASP	-	expression tag	UNP P48775
A	398	ASP	-	expression tag	UNP P48775
A	399	LYS	-	expression tag	UNP P48775
B	15	MET	-	expression tag	UNP P48775
B	16	GLY	-	expression tag	UNP P48775
B	17	SER	-	expression tag	UNP P48775
B	389	GLY	-	expression tag	UNP P48775
B	390	ASN	-	expression tag	UNP P48775
B	391	SER	-	expression tag	UNP P48775
B	392	ASP	-	expression tag	UNP P48775

Continued on next page...

Continued from previous page...

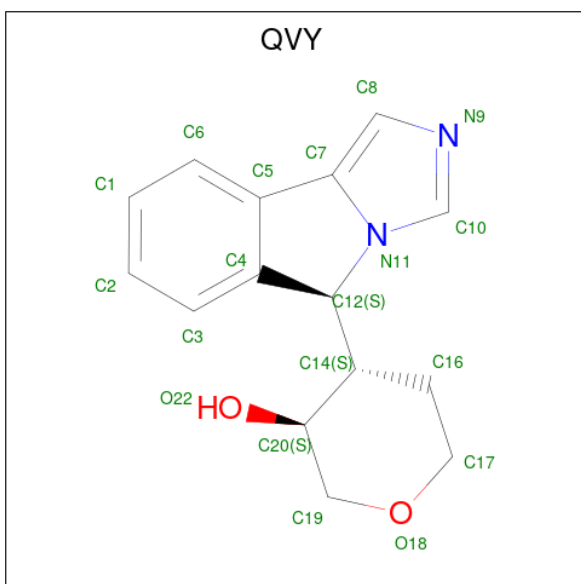
Chain	Residue	Modelled	Actual	Comment	Reference
B	393	TYR	-	expression tag	UNP P48775
B	394	LYS	-	expression tag	UNP P48775
B	395	ASP	-	expression tag	UNP P48775
B	396	ASP	-	expression tag	UNP P48775
B	397	ASP	-	expression tag	UNP P48775
B	398	ASP	-	expression tag	UNP P48775
B	399	LYS	-	expression tag	UNP P48775
C	15	MET	-	expression tag	UNP P48775
C	16	GLY	-	expression tag	UNP P48775
C	17	SER	-	expression tag	UNP P48775
C	389	GLY	-	expression tag	UNP P48775
C	390	ASN	-	expression tag	UNP P48775
C	391	SER	-	expression tag	UNP P48775
C	392	ASP	-	expression tag	UNP P48775
C	393	TYR	-	expression tag	UNP P48775
C	394	LYS	-	expression tag	UNP P48775
C	395	ASP	-	expression tag	UNP P48775
C	396	ASP	-	expression tag	UNP P48775
C	397	ASP	-	expression tag	UNP P48775
C	398	ASP	-	expression tag	UNP P48775
C	399	LYS	-	expression tag	UNP P48775
D	15	MET	-	expression tag	UNP P48775
D	16	GLY	-	expression tag	UNP P48775
D	17	SER	-	expression tag	UNP P48775
D	389	GLY	-	expression tag	UNP P48775
D	390	ASN	-	expression tag	UNP P48775
D	391	SER	-	expression tag	UNP P48775
D	392	ASP	-	expression tag	UNP P48775
D	393	TYR	-	expression tag	UNP P48775
D	394	LYS	-	expression tag	UNP P48775
D	395	ASP	-	expression tag	UNP P48775
D	396	ASP	-	expression tag	UNP P48775
D	397	ASP	-	expression tag	UNP P48775
D	398	ASP	-	expression tag	UNP P48775
D	399	LYS	-	expression tag	UNP P48775

- Molecule 2 is PROTOPORPHYRIN IX CONTAINING FE (three-letter code: HEM) (formula: C₃₄H₃₂FeN₄O₄).



Mol	Chain	Residues	Atoms				ZeroOcc	AltConf	
			Total	C	Fe	N			O
2	A	1	Total 43	C 34	Fe 1	N 4	O 4	0	0
2	B	1	Total 43	C 34	Fe 1	N 4	O 4	0	0
2	C	1	Total 43	C 34	Fe 1	N 4	O 4	0	0
2	D	1	Total 43	C 34	Fe 1	N 4	O 4	0	0

- Molecule 3 is 1,5-anhydro-2,3-dideoxy-3-[(5S)-5H-imidazo[5,1-a]isoindol-5-yl]-D-threo-pentitol (three-letter code: QVY) (formula: $C_{15}H_{16}N_2O_2$) (labeled as "Ligand of Interest" by depositor).



Mol	Chain	Residues	Atoms					ZeroOcc	AltConf
3	A	1	Total	C	H	N	O	0	0
			22	15	3	2	2		
3	B	1	Total	C	H	N	O	0	0
			22	15	3	2	2		
3	C	1	Total	C	H	N	O	0	0
			22	15	3	2	2		
3	C	1	Total	C	H	N	O	0	0
			22	15	3	2	2		

- Molecule 4 is water.

Mol	Chain	Residues	Atoms		ZeroOcc	AltConf
4	A	13	Total	O	0	0
			13	13		
4	B	12	Total	O	0	0
			12	12		
4	C	4	Total	O	0	0
			4	4		
4	D	7	Total	O	0	0
			7	7		

MolProbity and EDS failed to run properly - this section is therefore empty.

3 Data and refinement statistics

EDS failed to run properly - this section is therefore incomplete.

Property	Value	Source
Space group	P 21 21 21	Depositor
Cell constants a, b, c, α , β , γ	78.47Å 143.04Å 147.24Å 90.00° 90.00° 90.00°	Depositor
Resolution (Å)	39.37 – 3.18	Depositor
% Data completeness (in resolution range)	99.8 (39.37-3.18)	Depositor
R_{merge}	0.14	Depositor
R_{sym}	(Not available)	Depositor
$\langle I/\sigma(I) \rangle$ ¹	2.52 (at 3.19Å)	Xtrriage
Refinement program	BUSTER 2.11.6	Depositor
R, R_{free}	0.196 , 0.245	Depositor
Wilson B-factor (Å ²)	94.6	Xtrriage
Anisotropy	0.350	Xtrriage
L-test for twinning ²	$\langle L \rangle = 0.48$, $\langle L^2 \rangle = 0.31$	Xtrriage
Estimated twinning fraction	0.015 for -h,l,k	Xtrriage
Total number of atoms	11885	wwPDB-VP
Average B, all atoms (Å ²)	110.0	wwPDB-VP

Xtrriage's analysis on translational NCS is as follows: *The largest off-origin peak in the Patterson function is 4.05% of the height of the origin peak. No significant pseudotranslation is detected.*

¹Intensities estimated from amplitudes.

²Theoretical values of $\langle |L| \rangle$, $\langle L^2 \rangle$ for acentric reflections are 0.5, 0.333 respectively for untwinned datasets, and 0.375, 0.2 for perfectly twinned datasets.

4 Model quality [i](#)

4.1 Standard geometry [i](#)

MolProbity failed to run properly - this section is therefore empty.

4.2 Too-close contacts [i](#)

MolProbity failed to run properly - this section is therefore empty.

4.3 Torsion angles [i](#)

4.3.1 Protein backbone [i](#)

MolProbity failed to run properly - this section is therefore empty.

4.3.2 Protein sidechains [i](#)

MolProbity failed to run properly - this section is therefore empty.

4.3.3 RNA [i](#)

MolProbity failed to run properly - this section is therefore empty.

4.4 Non-standard residues in protein, DNA, RNA chains [i](#)

There are no non-standard protein/DNA/RNA residues in this entry.

4.5 Carbohydrates [i](#)

There are no monosaccharides in this entry.

4.6 Ligand geometry [i](#)

8 ligands are modelled in this entry.

In the following table, the Counts columns list the number of bonds (or angles) for which Mogul statistics could be retrieved, the number of bonds (or angles) that are observed in the model and the number of bonds (or angles) that are defined in the Chemical Component Dictionary. The Link column lists molecule types, if any, to which the group is linked. The Z score for a bond

length (or angle) is the number of standard deviations the observed value is removed from the expected value. A bond length (or angle) with $|Z| > 2$ is considered an outlier worth inspection. RMSZ is the root-mean-square of all Z scores of the bond lengths (or angles).

Mol	Type	Chain	Res	Link	Bond lengths			Bond angles		
					Counts	RMSZ	# Z > 2	Counts	RMSZ	# Z > 2
3	QVY	A	402	2	20,22,22	0.54	0	21,32,32	1.12	2 (9%)
2	HEM	D	401	3,1	41,50,50	1.26	6 (14%)	45,82,82	1.44	7 (15%)
2	HEM	B	401	3,1	41,50,50	1.28	7 (17%)	45,82,82	1.53	9 (20%)
3	QVY	C	402	2	20,22,22	0.53	0	21,32,32	1.16	2 (9%)
2	HEM	A	401	3,1	41,50,50	1.37	7 (17%)	45,82,82	1.53	6 (13%)
3	QVY	C	403	2	20,22,22	0.57	0	21,32,32	1.18	2 (9%)
3	QVY	B	402	2	20,22,22	0.51	0	21,32,32	1.11	2 (9%)
2	HEM	C	401	3,1	41,50,50	1.37	8 (19%)	45,82,82	1.46	7 (15%)

In the following table, the Chirals column lists the number of chiral outliers, the number of chiral centers analysed, the number of these observed in the model and the number defined in the Chemical Component Dictionary. Similar counts are reported in the Torsion and Rings columns. '-' means no outliers of that kind were identified.

Mol	Type	Chain	Res	Link	Chirals	Torsions	Rings
3	QVY	A	402	2	-	0/3/27/27	0/4/4/4
2	HEM	D	401	3,1	-	6/12/54/54	-
2	HEM	B	401	3,1	-	6/12/54/54	-
3	QVY	C	402	2	-	0/3/27/27	0/4/4/4
2	HEM	A	401	3,1	-	6/12/54/54	-
3	QVY	C	403	2	-	0/3/27/27	0/4/4/4
3	QVY	B	402	2	-	0/3/27/27	0/4/4/4
2	HEM	C	401	3,1	-	6/12/54/54	-

All (28) bond length outliers are listed below:

Mol	Chain	Res	Type	Atoms	Z	Observed(Å)	Ideal(Å)
2	C	401	HEM	C4D-ND	-2.97	1.35	1.40
2	B	401	HEM	C1B-NB	-2.83	1.35	1.40
2	A	401	HEM	C4D-ND	-2.80	1.35	1.40
2	C	401	HEM	C4D-C3D	2.79	1.49	1.45
2	D	401	HEM	C4D-ND	-2.70	1.35	1.40
2	D	401	HEM	C1B-NB	-2.57	1.35	1.40
2	A	401	HEM	C3B-C4B	2.50	1.49	1.44
2	A	401	HEM	C4D-C3D	2.50	1.49	1.45
2	B	401	HEM	C4D-C3D	2.49	1.49	1.45

Continued on next page...

Continued from previous page...

Mol	Chain	Res	Type	Atoms	Z	Observed(Å)	Ideal(Å)
2	B	401	HEM	C3B-C4B	2.47	1.49	1.44
2	B	401	HEM	C4D-ND	-2.47	1.36	1.40
2	D	401	HEM	C4D-C3D	2.45	1.49	1.45
2	D	401	HEM	C3C-C2C	-2.37	1.37	1.40
2	C	401	HEM	C3C-C2C	-2.35	1.37	1.40
2	B	401	HEM	C1D-ND	-2.31	1.34	1.38
2	A	401	HEM	C1D-ND	-2.30	1.34	1.38
2	D	401	HEM	C3B-C4B	2.28	1.49	1.44
2	C	401	HEM	C1D-C2D	2.24	1.48	1.44
2	C	401	HEM	C3B-C4B	2.23	1.49	1.44
2	A	401	HEM	C3C-C2C	-2.21	1.37	1.40
2	D	401	HEM	C1D-ND	-2.20	1.34	1.38
2	C	401	HEM	C1B-NB	-2.17	1.36	1.40
2	A	401	HEM	C1B-NB	-2.16	1.36	1.40
2	B	401	HEM	C1D-C2D	2.13	1.48	1.44
2	C	401	HEM	CAA-C2A	-2.12	1.48	1.52
2	A	401	HEM	C1D-C2D	2.10	1.48	1.44
2	C	401	HEM	C1D-ND	-2.06	1.34	1.38
2	B	401	HEM	C3C-C2C	-2.06	1.37	1.40

All (37) bond angle outliers are listed below:

Mol	Chain	Res	Type	Atoms	Z	Observed(°)	Ideal(°)
2	B	401	HEM	C2B-C1B-NB	3.79	114.33	109.84
3	C	403	QVY	C6-C5-C7	3.78	130.75	123.45
3	C	402	QVY	C6-C5-C7	3.74	130.68	123.45
2	A	401	HEM	C2B-C1B-NB	3.74	114.27	109.84
2	C	401	HEM	C2B-C1B-NB	3.69	114.21	109.84
2	B	401	HEM	CBD-CAD-C3D	-3.66	102.45	112.63
3	A	402	QVY	C6-C5-C7	3.49	130.20	123.45
2	A	401	HEM	CBD-CAD-C3D	-3.47	102.98	112.63
2	C	401	HEM	CBD-CAD-C3D	-3.44	103.06	112.63
2	D	401	HEM	C2B-C1B-NB	3.44	113.92	109.84
2	D	401	HEM	CBD-CAD-C3D	-3.40	103.19	112.63
3	B	402	QVY	C6-C5-C7	3.39	130.00	123.45
2	B	401	HEM	CBA-CAA-C2A	-3.28	107.03	112.62
2	A	401	HEM	CBA-CAA-C2A	-3.21	107.15	112.62
2	A	401	HEM	O2A-CGA-CBA	3.04	123.81	114.03
2	C	401	HEM	O2A-CGA-CBA	3.03	123.75	114.03
2	C	401	HEM	CBA-CAA-C2A	-2.81	107.82	112.62
2	D	401	HEM	CBA-CAA-C2A	-2.77	107.89	112.62
2	B	401	HEM	O2A-CGA-CBA	2.60	122.39	114.03

Continued on next page...

Continued from previous page...

Mol	Chain	Res	Type	Atoms	Z	Observed(°)	Ideal(°)
2	D	401	HEM	C4B-C3B-C2B	-2.53	105.11	107.11
2	D	401	HEM	O2A-CGA-CBA	2.39	121.71	114.03
3	B	402	QVY	C5-C7-N11	-2.35	105.28	112.38
2	B	401	HEM	C4A-C3A-C2A	-2.32	105.38	107.00
3	C	403	QVY	C5-C7-N11	-2.32	105.38	112.38
3	C	402	QVY	C5-C7-N11	-2.31	105.40	112.38
3	A	402	QVY	C5-C7-N11	-2.29	105.46	112.38
2	A	401	HEM	CHB-C1B-C2B	-2.26	120.48	126.72
2	C	401	HEM	C4B-C3B-C2B	-2.15	105.41	107.11
2	A	401	HEM	CHD-C1D-C2D	-2.15	121.62	124.98
2	C	401	HEM	CHB-C1B-C2B	-2.12	120.86	126.72
2	B	401	HEM	CHB-C1B-C2B	-2.08	120.98	126.72
2	B	401	HEM	CHD-C1D-C2D	-2.06	121.76	124.98
2	D	401	HEM	CHB-C1B-C2B	-2.06	121.03	126.72
2	B	401	HEM	CAD-CBD-CGD	2.03	117.97	113.60
2	B	401	HEM	C4B-C3B-C2B	-2.02	105.51	107.11
2	C	401	HEM	CHD-C1D-C2D	-2.01	121.84	124.98
2	D	401	HEM	CAD-CBD-CGD	2.00	117.92	113.60

There are no chirality outliers.

All (24) torsion outliers are listed below:

Mol	Chain	Res	Type	Atoms
2	A	401	HEM	C2B-C3B-CAB-CBB
2	D	401	HEM	C2B-C3B-CAB-CBB
2	B	401	HEM	C4B-C3B-CAB-CBB
2	C	401	HEM	C4B-C3B-CAB-CBB
2	D	401	HEM	CAA-CBA-CGA-O2A
2	B	401	HEM	CAA-CBA-CGA-O1A
2	A	401	HEM	CAA-CBA-CGA-O1A
2	B	401	HEM	CAA-CBA-CGA-O2A
2	C	401	HEM	CAA-CBA-CGA-O1A
2	A	401	HEM	CAA-CBA-CGA-O2A
2	C	401	HEM	CAA-CBA-CGA-O2A
2	D	401	HEM	CAA-CBA-CGA-O1A
2	B	401	HEM	C2B-C3B-CAB-CBB
2	C	401	HEM	C2B-C3B-CAB-CBB
2	A	401	HEM	C4B-C3B-CAB-CBB
2	D	401	HEM	C4B-C3B-CAB-CBB
2	C	401	HEM	CAD-CBD-CGD-O2D
2	D	401	HEM	CAD-CBD-CGD-O2D
2	B	401	HEM	CAD-CBD-CGD-O2D

Continued on next page...

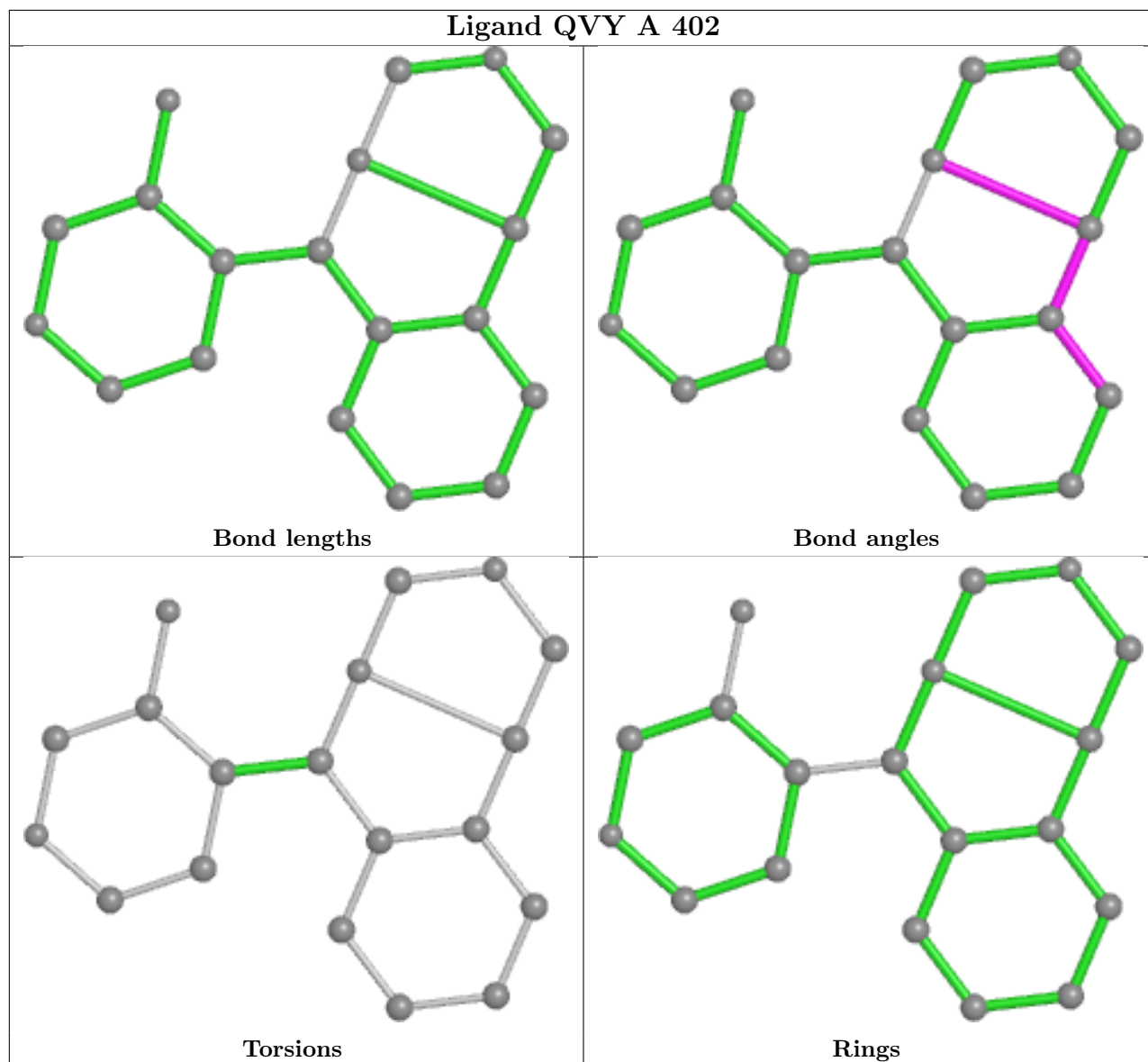
Continued from previous page...

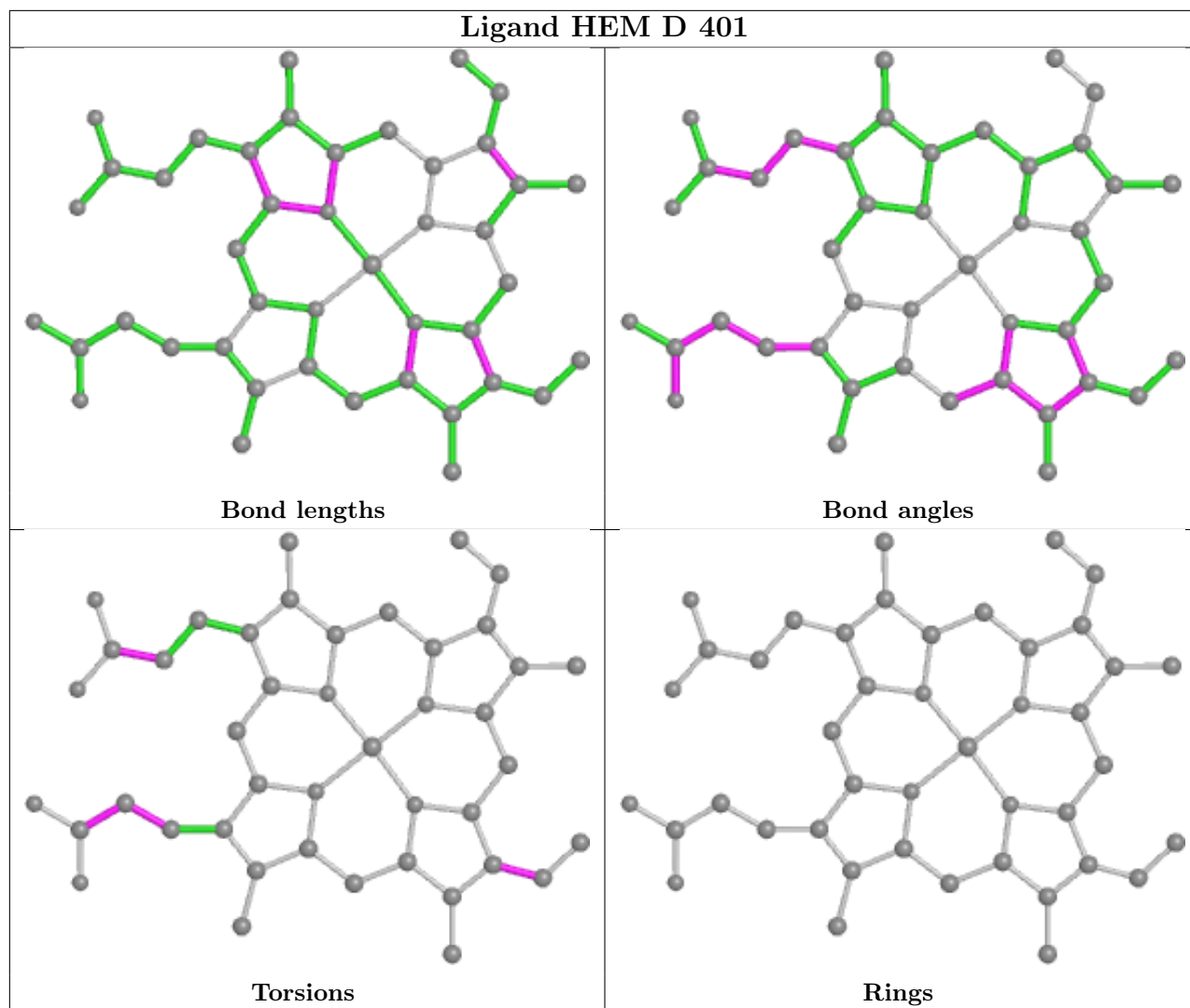
Mol	Chain	Res	Type	Atoms
2	A	401	HEM	CAD-CBD-CGD-O1D
2	A	401	HEM	CAD-CBD-CGD-O2D
2	B	401	HEM	CAD-CBD-CGD-O1D
2	C	401	HEM	CAD-CBD-CGD-O1D
2	D	401	HEM	C2A-CAA-CBA-CGA

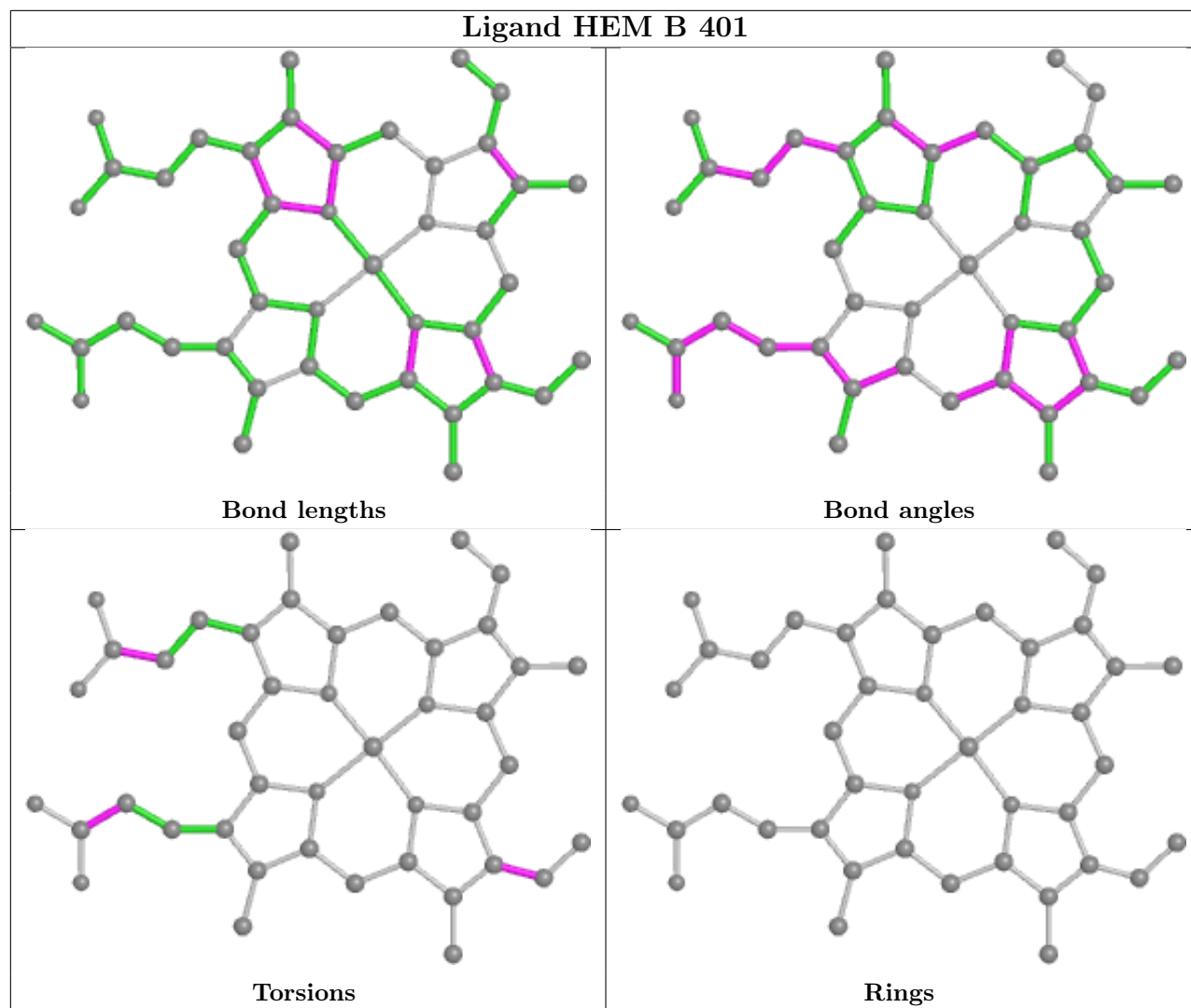
There are no ring outliers.

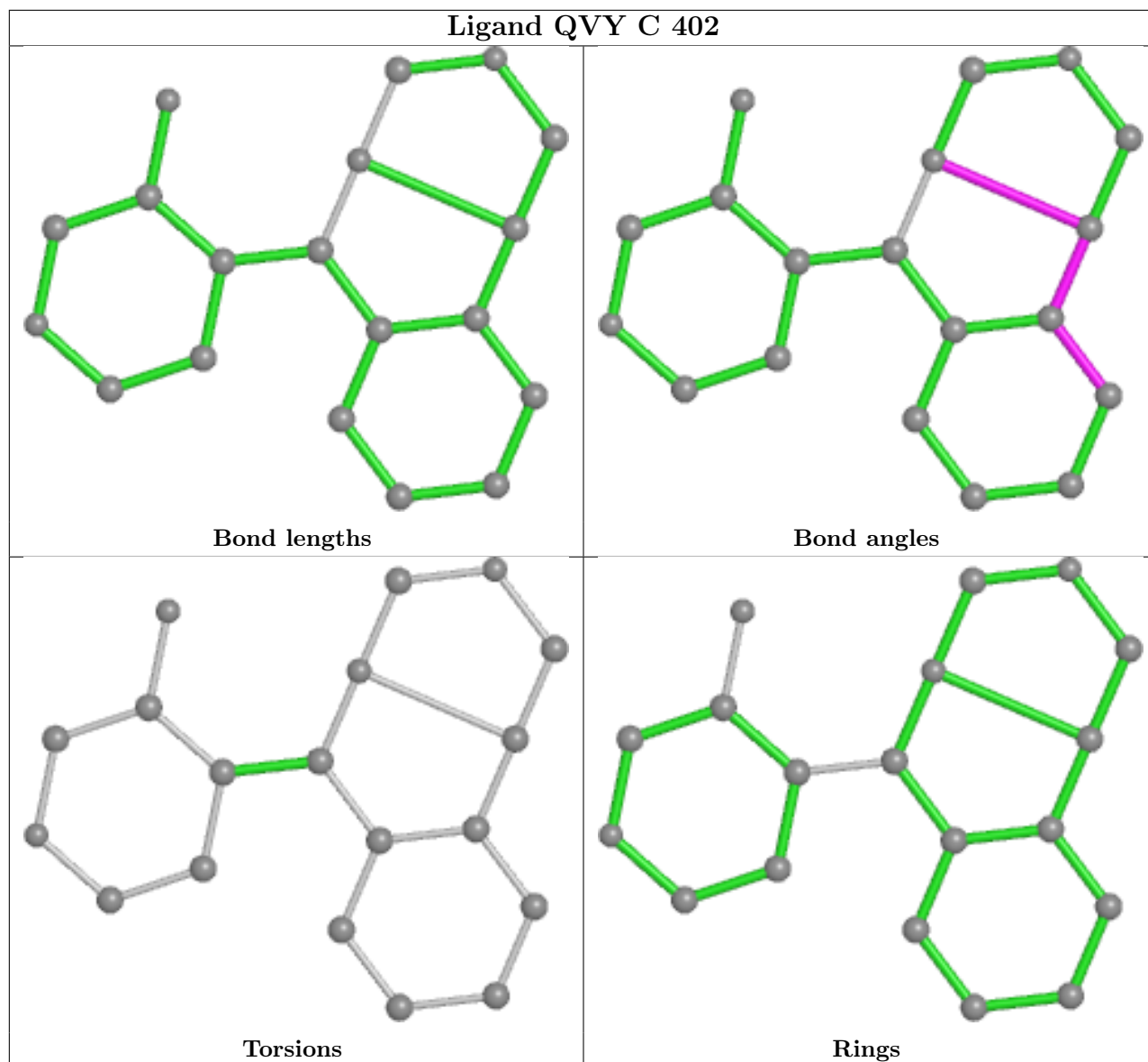
No monomer is involved in short contacts.

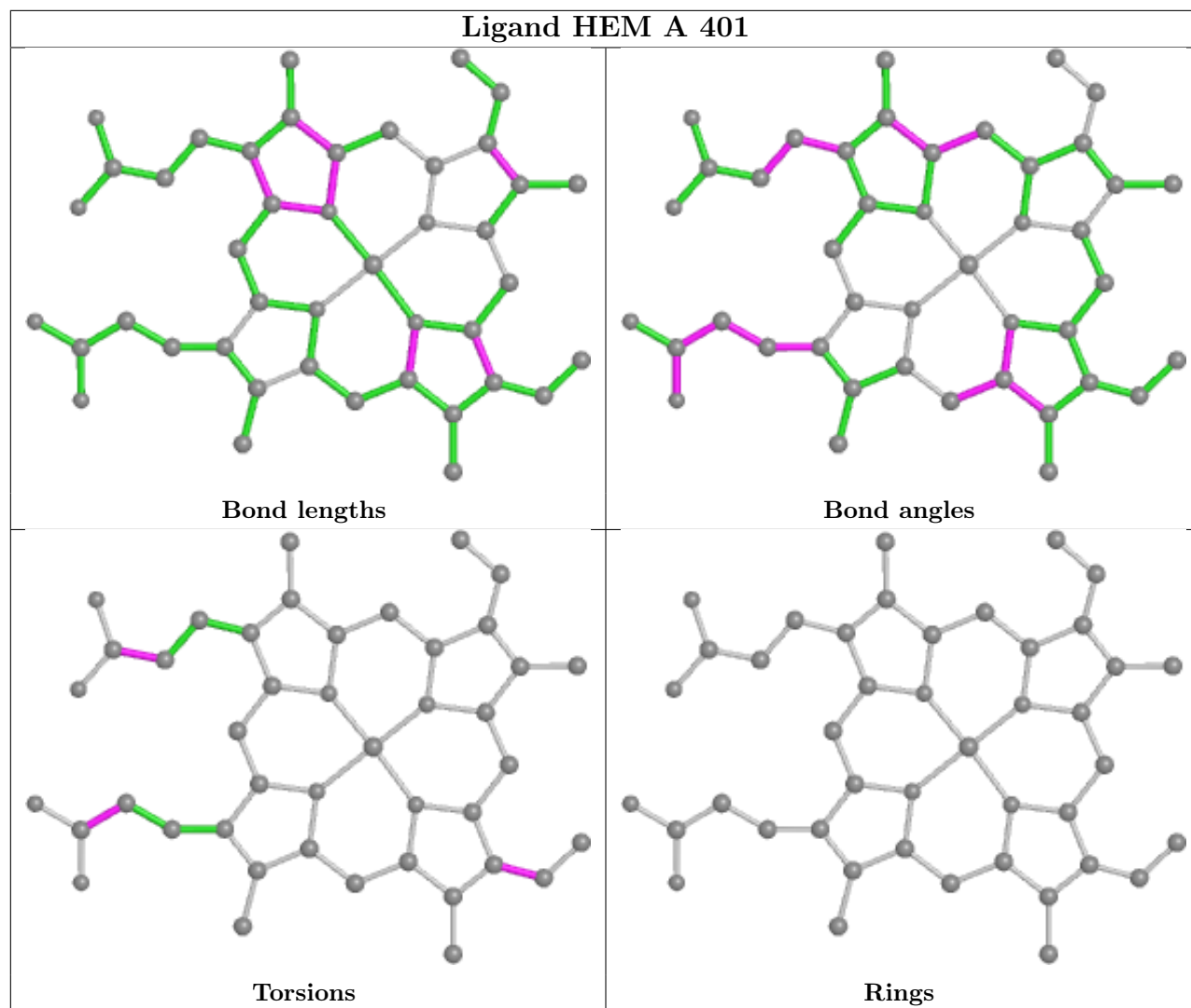
The following is a two-dimensional graphical depiction of Mogul quality analysis of bond lengths, bond angles, torsion angles, and ring geometry for all instances of the Ligand of Interest. In addition, ligands with molecular weight > 250 and outliers as shown on the validation Tables will also be included. For torsion angles, if less than 5% of the Mogul distribution of torsion angles is within 10 degrees of the torsion angle in question, then that torsion angle is considered an outlier. Any bond that is central to one or more torsion angles identified as an outlier by Mogul will be highlighted in the graph. For rings, the root-mean-square deviation (RMSD) between the ring in question and similar rings identified by Mogul is calculated over all ring torsion angles. If the average RMSD is greater than 60 degrees and the minimal RMSD between the ring in question and any Mogul-identified rings is also greater than 60 degrees, then that ring is considered an outlier. The outliers are highlighted in purple. The color gray indicates Mogul did not find sufficient equivalents in the CSD to analyse the geometry.

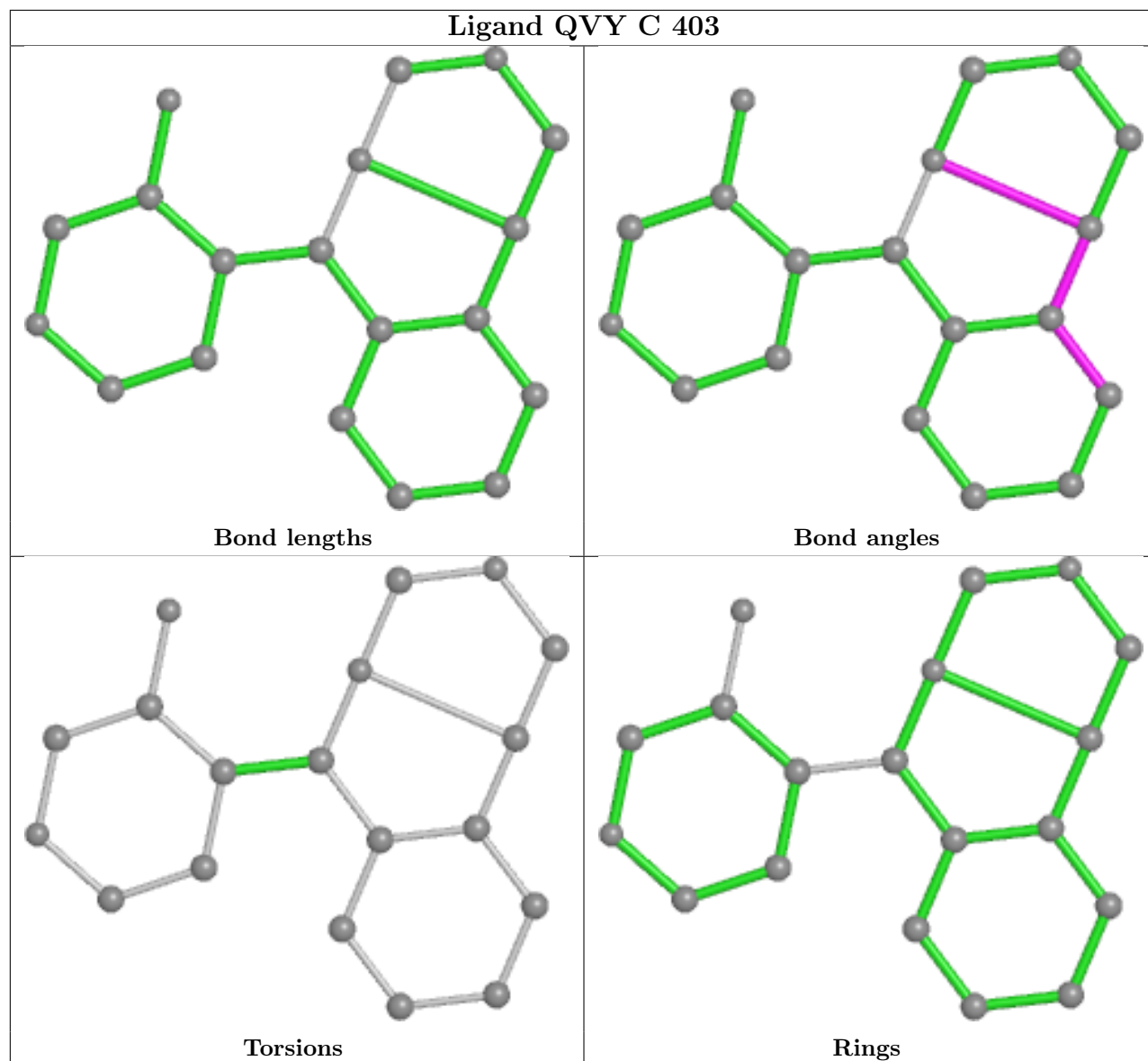


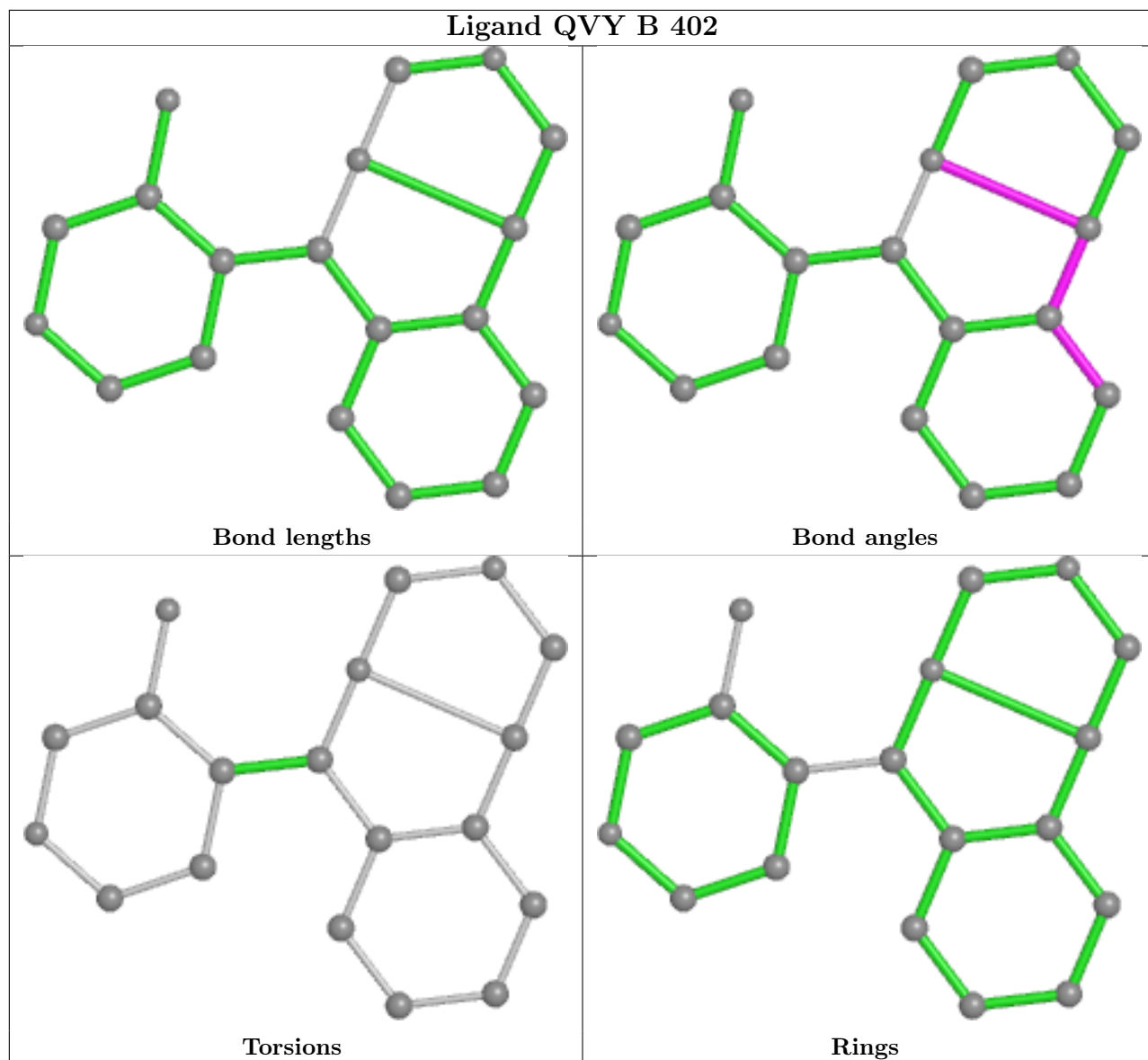


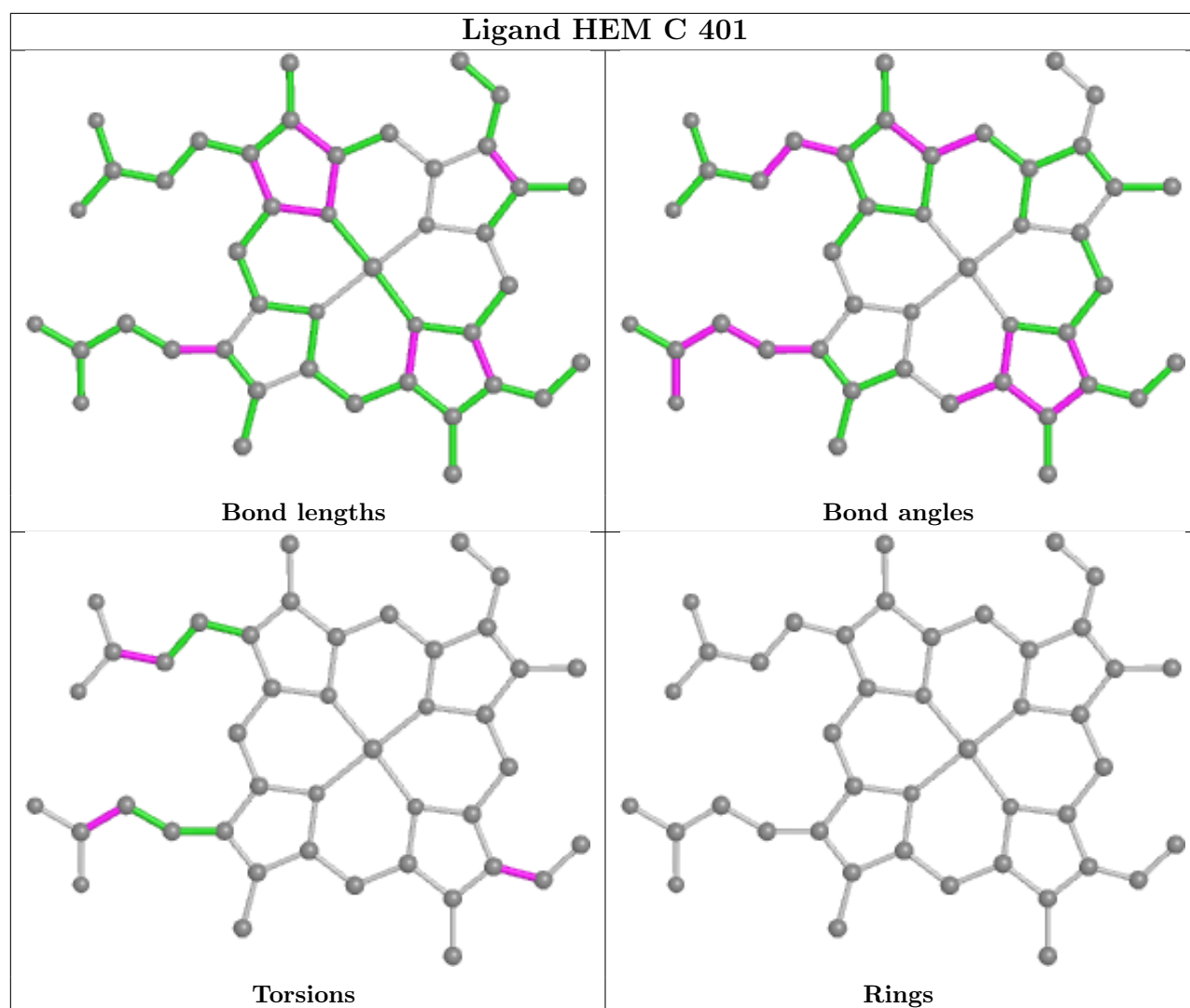












4.7 Other polymers [i](#)

There are no such residues in this entry.

4.8 Polymer linkage issues [i](#)

There are no chain breaks in this entry.

5 Fit of model and data

5.1 Protein, DNA and RNA chains

EDS failed to run properly - this section is therefore empty.

5.2 Non-standard residues in protein, DNA, RNA chains

EDS failed to run properly - this section is therefore empty.

5.3 Carbohydrates

EDS failed to run properly - this section is therefore empty.

5.4 Ligands

EDS failed to run properly - this section is therefore empty.

5.5 Other polymers

EDS failed to run properly - this section is therefore empty.