



Full wwPDB X-ray Structure Validation Report ⓘ

Oct 17, 2023 – 11:19 PM EDT

PDB ID : 1VC4
Title : Crystal Structure of Indole-3-Glycerol Phosphate Synthase (TrpC) from *Thermus Thermophilus* At 1.8 Å Resolution
Authors : Bagautdinov, B.; Tahirov, T.H.; RIKEN Structural Genomics/Proteomics Initiative (RSGI)
Deposited on : 2004-03-04
Resolution : 1.80 Å(reported)

This is a Full wwPDB X-ray Structure Validation Report for a publicly released PDB entry.

We welcome your comments at validation@mail.wwpdb.org

A user guide is available at

<https://www.wwpdb.org/validation/2017/XrayValidationReportHelp>

with specific help available everywhere you see the ⓘ symbol.

The types of validation reports are described at

<http://www.wwpdb.org/validation/2017/FAQs#types>.

The following versions of software and data (see [references ⓘ](#)) were used in the production of this report:

MolProbity : 4.02b-467
Mogul : 1.8.5 (274361), CSD as541be (2020)
Xtriage (Phenix) : 1.13
EDS : 2.36
Percentile statistics : 20191225.v01 (using entries in the PDB archive December 25th 2019)
Refmac : 5.8.0158
CCP4 : 7.0.044 (Gargrove)
Ideal geometry (proteins) : Engh & Huber (2001)
Ideal geometry (DNA, RNA) : Parkinson et al. (1996)
Validation Pipeline (wwPDB-VP) : 2.36

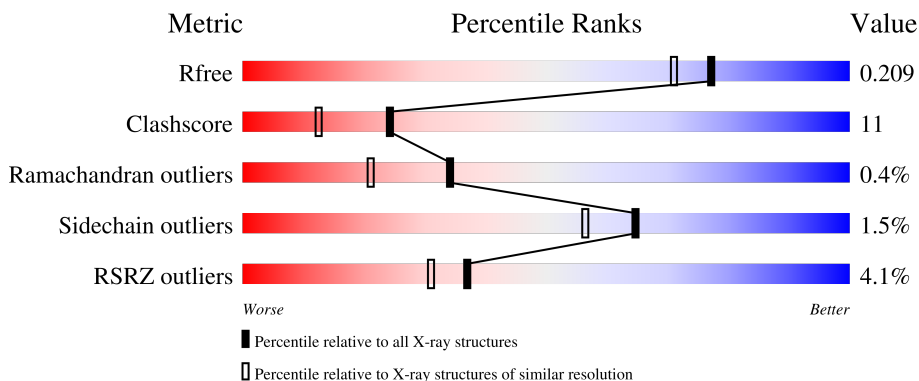
1 Overall quality at a glance

The following experimental techniques were used to determine the structure:

X-RAY DIFFRACTION


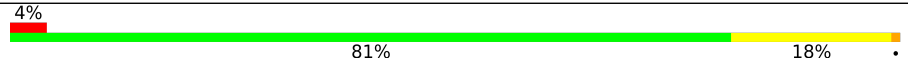
The reported resolution of this entry is 1.80 Å.

Percentile scores (ranging between 0-100) for global validation metrics of the entry are shown in the following graphic. The table shows the number of entries on which the scores are based.



Metric	Whole archive (#Entries)	Similar resolution (#Entries, resolution range(Å))
R_{free}	130704	5950 (1.80-1.80)
Clashscore	141614	6793 (1.80-1.80)
Ramachandran outliers	138981	6697 (1.80-1.80)
Sidechain outliers	138945	6696 (1.80-1.80)
RSRZ outliers	127900	5850 (1.80-1.80)

The table below summarises the geometric issues observed across the polymeric chains and their fit to the electron density. The red, orange, yellow and green segments of the lower bar indicate the fraction of residues that contain outliers for ≥ 3 , 2, 1 and 0 types of geometric quality criteria respectively. A grey segment represents the fraction of residues that are not modelled. The numeric value for each fraction is indicated below the corresponding segment, with a dot representing fractions $\leq 5\%$. The upper red bar (where present) indicates the fraction of residues that have poor fit to the electron density. The numeric value is given above the bar.

Mol	Chain	Length	Quality of chain
1	A	254	 4% 81% 18% .
1	B	254	 4% 81% 18% .

2 Entry composition [i](#)

There are 5 unique types of molecules in this entry. The entry contains 4656 atoms, of which 0 are hydrogens and 0 are deuteriums.

In the tables below, the ZeroOcc column contains the number of atoms modelled with zero occupancy, the AltConf column contains the number of residues with at least one atom in alternate conformation and the Trace column contains the number of residues modelled with at most 2 atoms.

- Molecule 1 is a protein called Indole-3-Glycerol Phosphate Synthase.

Mol	Chain	Residues	Atoms					ZeroOcc	AltConf	Trace
			Total	C	N	O	S			
1	A	254	Total 1953	C 1239	N 353	O 358	S 3	0	5	0
1	B	254	Total 1944	C 1229	N 353	O 359	S 3	0	3	0

- Molecule 2 is SULFATE ION (three-letter code: SO4) (formula: O₄S).



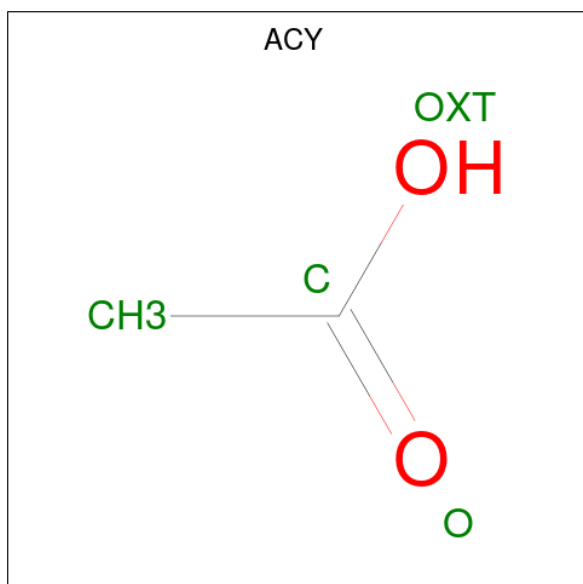
Mol	Chain	Residues	Atoms			ZeroOcc	AltConf
			Total	O	S		
2	A	1	Total 5	O 4	S 1	0	0
2	A	1	Total 5	O 4	S 1	0	0
2	A	1	Total 5	O 4	S 1	0	0
2	A	1	Total 5	O 4	S 1	0	0

Continued on next page...

Continued from previous page...

Mol	Chain	Residues	Atoms	ZeroOcc	AltConf
2	A	1	Total O S 5 4 1	0	0
2	B	1	Total O S 5 4 1	0	0
2	B	1	Total O S 5 4 1	0	0
2	B	1	Total O S 5 4 1	0	0
2	B	1	Total O S 5 4 1	0	0
2	B	1	Total O S 5 4 1	0	0

- Molecule 3 is ACETIC ACID (three-letter code: ACY) (formula: C₂H₄O₂).



Mol	Chain	Residues	Atoms	ZeroOcc	AltConf
3	A	1	Total C O 4 2 2	0	0
3	A	1	Total C O 4 2 2	0	0
3	B	1	Total C O 4 2 2	0	0
3	B	1	Total C O 4 2 2	0	0
3	B	1	Total C O 4 2 2	0	0

- Molecule 4 is GLYCEROL (three-letter code: GOL) (formula: $C_3H_8O_3$).



Mol	Chain	Residues	Atoms		ZeroOcc	AltConf
4	B	1	Total	C O	0	0
			6	3 3		

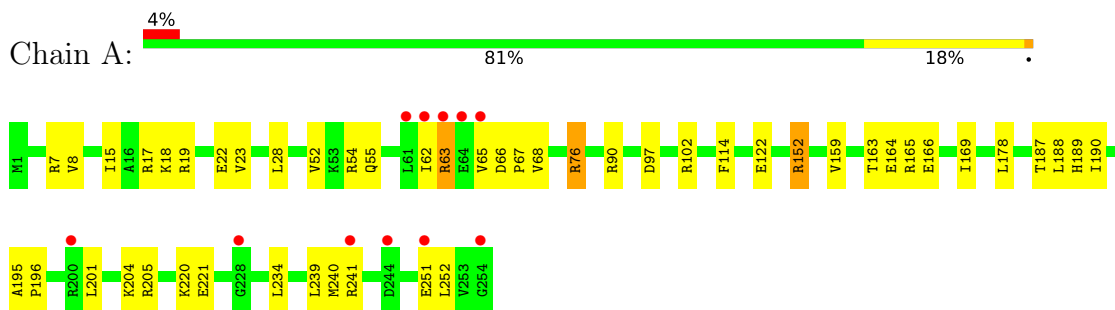
- Molecule 5 is water.

Mol	Chain	Residues	Atoms		ZeroOcc	AltConf
5	A	335	Total	O	0	0
			335	335		
5	B	348	Total	O	0	0
			348	348		

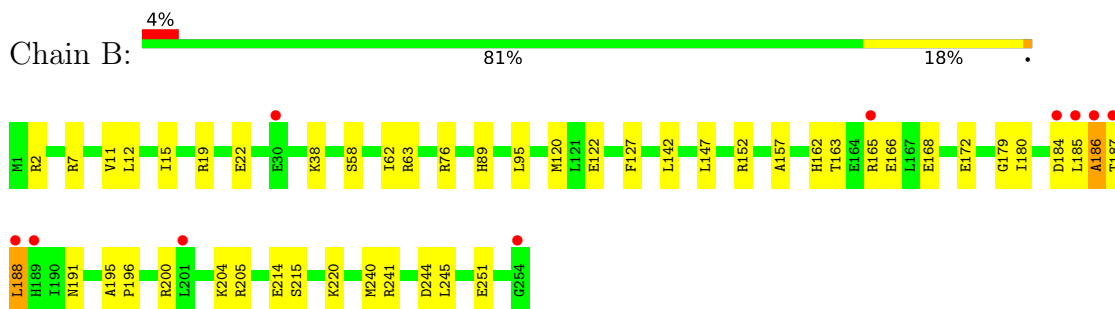
3 Residue-property plots [i](#)

These plots are drawn for all protein, RNA, DNA and oligosaccharide chains in the entry. The first graphic for a chain summarises the proportions of the various outlier classes displayed in the second graphic. The second graphic shows the sequence view annotated by issues in geometry and electron density. Residues are color-coded according to the number of geometric quality criteria for which they contain at least one outlier: green = 0, yellow = 1, orange = 2 and red = 3 or more. A red dot above a residue indicates a poor fit to the electron density ($RSRZ > 2$). Stretches of 2 or more consecutive residues without any outlier are shown as a green connector. Residues present in the sample, but not in the model, are shown in grey.

- Molecule 1: Indole-3-Glycerol Phosphate Synthase



- Molecule 1: Indole-3-Glycerol Phosphate Synthase



4 Data and refinement statistics

Property	Value	Source
Space group	P 21 21 21	Depositor
Cell constants a, b, c, α , β , γ	63.65Å 78.19Å 91.52Å 90.00° 90.00° 90.00°	Depositor
Resolution (Å)	33.56 – 1.80 33.56 – 1.80	Depositor EDS
% Data completeness (in resolution range)	97.6 (33.56-1.80) 97.6 (33.56-1.80)	Depositor EDS
R_{merge}	0.07	Depositor
R_{sym}	(Not available)	Depositor
$\langle I/\sigma(I) \rangle$ ¹	0.74 (at 1.79Å)	Xtrriage
Refinement program	CNS 1.1	Depositor
R, R_{free}	0.186 , 0.218 0.176 , 0.209	Depositor DCC
R_{free} test set	2145 reflections (5.01%)	wwPDB-VP
Wilson B-factor (Å ²)	21.5	Xtrriage
Anisotropy	0.378	Xtrriage
Bulk solvent k_{sol} (e/Å ³), B_{sol} (Å ²)	0.33 , 53.4	EDS
L-test for twinning ²	$\langle L \rangle = 0.48$, $\langle L^2 \rangle = 0.30$	Xtrriage
Estimated twinning fraction	No twinning to report.	Xtrriage
F_o, F_c correlation	0.96	EDS
Total number of atoms	4656	wwPDB-VP
Average B, all atoms (Å ²)	24.0	wwPDB-VP

Xtrriage's analysis on translational NCS is as follows: *The analyses of the Patterson function reveals a significant off-origin peak that is 37.59 % of the origin peak, indicating pseudo-translational symmetry. The chance of finding a peak of this or larger height randomly in a structure without pseudo-translational symmetry is equal to 4.1887e-04. The detected translational NCS is most likely also responsible for the elevated intensity ratio.*

¹Intensities estimated from amplitudes.

²Theoretical values of $\langle |L| \rangle$, $\langle L^2 \rangle$ for acentric reflections are 0.5, 0.333 respectively for untwinned datasets, and 0.375, 0.2 for perfectly twinned datasets.

5 Model quality [i](#)

5.1 Standard geometry [i](#)

Bond lengths and bond angles in the following residue types are not validated in this section: ACY, SO4, GOL

The Z score for a bond length (or angle) is the number of standard deviations the observed value is removed from the expected value. A bond length (or angle) with $|Z| > 5$ is considered an outlier worth inspection. RMSZ is the root-mean-square of all Z scores of the bond lengths (or angles).

Mol	Chain	Bond lengths		Bond angles	
		RMSZ	# Z >5	RMSZ	# Z >5
1	A	0.27	0/2006	0.59	0/2713
1	B	0.29	0/1989	0.60	0/2690
All	All	0.28	0/3995	0.59	0/5403

There are no bond length outliers.

There are no bond angle outliers.

There are no chirality outliers.

There are no planarity outliers.

5.2 Too-close contacts [i](#)

In the following table, the Non-H and H(model) columns list the number of non-hydrogen atoms and hydrogen atoms in the chain respectively. The H(added) column lists the number of hydrogen atoms added and optimized by MolProbity. The Clashes column lists the number of clashes within the asymmetric unit, whereas Symm-Clashes lists symmetry-related clashes.

Mol	Chain	Non-H	H(model)	H(added)	Clashes	Symm-Clashes
1	A	1953	0	2049	53	0
1	B	1944	0	2027	37	0
2	A	25	0	0	0	0
2	B	25	0	0	1	0
3	A	8	0	6	0	0
3	B	12	0	9	2	0
4	B	6	0	8	1	0
5	A	335	0	0	7	0
5	B	348	0	0	8	0
All	All	4656	0	4099	89	0

The all-atom clashscore is defined as the number of clashes found per 1000 atoms (including

hydrogen atoms). The all-atom clashscore for this structure is 11.

All (89) close contacts within the same asymmetric unit are listed below, sorted by their clash magnitude.

Atom-1	Atom-2	Interatomic distance (Å)	Clash overlap (Å)
1:A:195:ALA:HB3	1:A:196:PRO:HD3	1.66	0.75
1:A:165:ARG:HH21	1:A:169:ILE:HD11	1.52	0.74
1:B:205:ARG:HH21	4:B:1001:GOL:H2	1.53	0.73
1:B:195:ALA:HB3	1:B:196:PRO:HD3	1.71	0.70
1:A:201:LEU:O	1:A:205:ARG:HG2	1.93	0.68
1:B:220:LYS:HE2	1:B:251:GLU:O	1.94	0.68
1:B:162:HIS:NE2	1:B:184:ASP:HA	2.09	0.68
1:A:52[A]:VAL:HG11	1:A:67:PRO:HA	1.76	0.67
1:B:7:ARG:HD2	5:B:3077:HOH:O	1.94	0.65
1:A:165:ARG:NH2	1:A:169:ILE:HD11	2.11	0.65
1:A:221:GLU:HG2	1:B:122:GLU:OE1	1.97	0.65
1:A:65:VAL:HG11	1:A:240:MET:HE3	1.78	0.64
1:B:185:LEU:O	1:B:186:ALA:HB2	1.98	0.64
1:B:204:LYS:HB2	1:B:204:LYS:NZ	2.14	0.63
1:A:63:ARG:H	1:A:63:ARG:CD	2.11	0.63
1:A:76:ARG:HD3	5:A:3225:HOH:O	1.98	0.62
1:B:187:THR:HB	5:B:3344:HOH:O	2.01	0.60
1:A:63:ARG:HH11	1:A:63:ARG:HG2	1.67	0.59
1:A:63:ARG:H	1:A:63:ARG:HD3	1.69	0.57
1:B:244:ASP:HA	3:B:3003:ACY:O	2.04	0.57
1:B:147:LEU:HG	5:B:3343:HOH:O	2.06	0.56
1:A:205:ARG:NH1	1:A:205:ARG:HB3	2.22	0.55
1:A:7:ARG:HH11	1:A:7:ARG:HG2	1.73	0.54
1:A:63:ARG:HD3	1:A:63:ARG:N	2.24	0.53
1:B:58[B]:SER:OG	1:B:188:LEU:HG	2.07	0.53
1:A:15:ILE:HG12	1:A:90:ARG:HG3	1.92	0.52
1:A:8:VAL:O	1:A:17:ARG:NH2	2.43	0.52
1:B:163:THR:OG1	1:B:166:GLU:HG3	2.09	0.51
1:A:189:HIS:HD2	5:A:3057:HOH:O	1.94	0.51
1:A:220:LYS:HE3	5:B:3287:HOH:O	2.11	0.51
1:A:18:LYS:O	1:A:22:GLU:HG2	2.10	0.51
1:B:62:ILE:HG23	1:B:241:ARG:HG3	1.92	0.51
1:A:55:GLN:HG3	5:A:3197:HOH:O	2.10	0.51
1:B:2[A]:ARG:NE	5:B:3174:HOH:O	2.44	0.51
1:B:63:ARG:HH22	1:B:245:LEU:HD11	1.76	0.51
1:A:164:GLU:HG2	1:A:201:LEU:HD21	1.94	0.50
1:A:28:LEU:CD1	1:A:122:GLU:HG2	2.42	0.49
1:B:168:GLU:O	1:B:172:GLU:HG3	2.12	0.49

Continued on next page...

Continued from previous page...

Atom-1	Atom-2	Interatomic distance (Å)	Clash overlap (Å)
1:B:185:LEU:O	1:B:186:ALA:CB	2.59	0.49
1:A:17:ARG:HD2	5:A:3107:HOH:O	2.13	0.48
1:A:63:ARG:CD	1:A:63:ARG:N	2.77	0.48
1:B:165:ARG:HG3	5:B:3230:HOH:O	2.13	0.48
1:A:164:GLU:HG2	1:A:201:LEU:CD2	2.44	0.47
1:B:180:ILE:HG21	1:B:195:ALA:HA	1.96	0.47
1:A:19:ARG:O	1:A:23:VAL:HG23	2.15	0.47
1:A:159:VAL:O	1:A:178[B]:LEU:HD22	2.14	0.47
1:A:52[A]:VAL:CG1	1:A:67:PRO:HA	2.43	0.47
1:A:65:VAL:HG11	1:A:240:MET:CE	2.45	0.46
1:A:163:THR:OG1	1:A:166:GLU:HG3	2.16	0.46
1:B:63:ARG:NH2	1:B:240:MET:O	2.45	0.46
1:B:147:LEU:CD2	1:B:157:ALA:HB3	2.46	0.45
1:B:22:GLU:OE1	1:B:89:HIS:NE2	2.41	0.45
1:A:62:ILE:HD13	1:A:241:ARG:HG3	1.98	0.45
1:B:63:ARG:HH22	1:B:245:LEU:CD1	2.29	0.45
1:B:147:LEU:C	1:B:147:LEU:HD13	2.37	0.44
1:A:220:LYS:HE2	1:A:251:GLU:O	2.17	0.44
1:A:187:THR:O	1:A:188:LEU:HB2	2.17	0.43
1:A:152[A]:ARG:NE	5:A:3311:HOH:O	2.51	0.43
1:A:65:VAL:HG22	1:A:66:ASP:N	2.33	0.43
1:B:38:LYS:HE3	5:B:3350:HOH:O	2.17	0.43
1:B:196:PRO:O	1:B:200:ARG:HG3	2.18	0.43
1:A:52[A]:VAL:HG11	1:A:67:PRO:CA	2.46	0.43
1:A:66:ASP:OD2	1:A:68:VAL:HB	2.19	0.43
1:A:251:GLU:HA	1:A:251:GLU:OE1	2.19	0.43
1:A:165:ARG:HG2	5:A:3138:HOH:O	2.17	0.43
1:B:251:GLU:HG3	2:B:2008:SO4:O1	2.19	0.43
1:B:152:ARG:HD2	5:B:3105:HOH:O	2.18	0.42
1:A:204:LYS:O	1:A:204:LYS:HD3	2.20	0.42
1:A:239:LEU:HD21	1:A:252:LEU:HD12	2.02	0.42
1:B:95:LEU:HD21	1:B:127:PHE:CE1	2.54	0.42
1:A:54:ARG:NH2	1:A:97:ASP:OD1	2.53	0.41
1:A:190:ILE:HG22	5:A:3331:HOH:O	2.20	0.41
1:B:22:GLU:CD	1:B:89:HIS:HE2	2.21	0.41
1:B:120:MET:HG2	3:B:3005:ACY:H2	2.01	0.41
1:B:147:LEU:HD13	1:B:147:LEU:O	2.21	0.41
1:B:179:GLY:HA3	1:B:214:GLU:OE1	2.21	0.41
1:A:28:LEU:HD12	1:A:122:GLU:HG2	2.01	0.41
1:A:63:ARG:HG2	1:A:63:ARG:NH1	2.33	0.41
1:A:114:PHE:CD1	1:A:114:PHE:N	2.88	0.41

Continued on next page...

Continued from previous page...

Atom-1	Atom-2	Interatomic distance (Å)	Clash overlap (Å)
1:B:15:ILE:O	1:B:19:ARG:HG2	2.20	0.41
1:B:142:LEU:HD23	1:B:142:LEU:HA	1.96	0.41
1:A:62:ILE:HD13	1:A:241:ARG:CG	2.51	0.40
1:B:11:VAL:HG13	1:B:12:LEU:N	2.37	0.40

There are no symmetry-related clashes.

5.3 Torsion angles [i](#)

5.3.1 Protein backbone [i](#)

In the following table, the Percentiles column shows the percent Ramachandran outliers of the chain as a percentile score with respect to all X-ray entries followed by that with respect to entries of similar resolution.

The Analysed column shows the number of residues for which the backbone conformation was analysed, and the total number of residues.

Mol	Chain	Analysed	Favoured	Allowed	Outliers	Percentiles	
1	A	257/254 (101%)	252 (98%)	5 (2%)	0	100	100
1	B	255/254 (100%)	249 (98%)	4 (2%)	2 (1%)	19	7
All	All	512/508 (101%)	501 (98%)	9 (2%)	2 (0%)	34	21

All (2) Ramachandran outliers are listed below:

Mol	Chain	Res	Type
1	B	186	ALA
1	B	215	SER

5.3.2 Protein sidechains [i](#)

In the following table, the Percentiles column shows the percent sidechain outliers of the chain as a percentile score with respect to all X-ray entries followed by that with respect to entries of similar resolution.

The Analysed column shows the number of residues for which the sidechain conformation was analysed, and the total number of residues.

Continued on next page...

Continued from previous page...

Mol	Chain	Analysed	Rotameric	Outliers	Percentiles	
1	A	204/199 (102%)	200 (98%)	4 (2%)	55	44
1	B	202/199 (102%)	198 (98%)	4 (2%)	55	44
All	All	406/398 (102%)	398 (98%)	8 (2%)	65	44

All (8) residues with a non-rotameric sidechain are listed below:

Mol	Chain	Res	Type
1	A	63	ARG
1	A	76	ARG
1	A	152[A]	ARG
1	A	152[B]	ARG
1	B	76[A]	ARG
1	B	76[B]	ARG
1	B	188	LEU
1	B	191	ASN

Sometimes sidechains can be flipped to improve hydrogen bonding and reduce clashes. All (2) such sidechains are listed below:

Mol	Chain	Res	Type
1	A	55	GLN
1	B	191	ASN

5.3.3 RNA [i](#)

There are no RNA molecules in this entry.

5.4 Non-standard residues in protein, DNA, RNA chains [i](#)

There are no non-standard protein/DNA/RNA residues in this entry.

5.5 Carbohydrates [i](#)

There are no monosaccharides in this entry.

5.6 Ligand geometry

16 ligands are modelled in this entry.

In the following table, the Counts columns list the number of bonds (or angles) for which Mogul statistics could be retrieved, the number of bonds (or angles) that are observed in the model and the number of bonds (or angles) that are defined in the Chemical Component Dictionary. The Link column lists molecule types, if any, to which the group is linked. The Z score for a bond length (or angle) is the number of standard deviations the observed value is removed from the expected value. A bond length (or angle) with $|Z| > 2$ is considered an outlier worth inspection. RMSZ is the root-mean-square of all Z scores of the bond lengths (or angles).

Mol	Type	Chain	Res	Link	Bond lengths			Bond angles		
					Counts	RMSZ	# Z > 2	Counts	RMSZ	# Z > 2
2	SO4	A	2009	-	4,4,4	1.88	2 (50%)	6,6,6	0.89	0
2	SO4	B	2005	-	4,4,4	1.86	2 (50%)	6,6,6	0.88	0
3	ACY	B	3002	-	3,3,3	2.60	1 (33%)	3,3,3	1.42	0
2	SO4	A	2004	-	4,4,4	1.90	2 (50%)	6,6,6	0.90	0
3	ACY	B	3003	-	3,3,3	2.60	1 (33%)	3,3,3	1.43	0
2	SO4	A	2007	-	4,4,4	1.87	2 (50%)	6,6,6	0.91	0
2	SO4	A	2001	-	4,4,4	1.80	2 (50%)	6,6,6	0.88	0
2	SO4	B	2006	-	4,4,4	1.89	2 (50%)	6,6,6	0.91	0
2	SO4	B	2008	-	4,4,4	1.88	2 (50%)	6,6,6	0.90	0
3	ACY	A	3004	-	3,3,3	2.68	1 (33%)	3,3,3	1.36	0
3	ACY	B	3005	-	3,3,3	2.63	1 (33%)	3,3,3	1.36	0
2	SO4	B	2010	-	4,4,4	1.88	2 (50%)	6,6,6	0.89	0
4	GOL	B	1001	-	5,5,5	0.41	0	5,5,5	0.38	0
2	SO4	A	2002	-	4,4,4	1.77	2 (50%)	6,6,6	0.86	0
2	SO4	B	2003	-	4,4,4	1.76	2 (50%)	6,6,6	0.90	0
3	ACY	A	3001	-	3,3,3	2.64	1 (33%)	3,3,3	1.39	0

In the following table, the Chirals column lists the number of chiral outliers, the number of chiral centers analysed, the number of these observed in the model and the number defined in the Chemical Component Dictionary. Similar counts are reported in the Torsion and Rings columns. '-' means no outliers of that kind were identified.

Mol	Type	Chain	Res	Link	Chirals	Torsions	Rings
4	GOL	B	1001	-	-	4/4/4/4	-

All (25) bond length outliers are listed below:

Mol	Chain	Res	Type	Atoms	Z	Observed(Å)	Ideal(Å)
3	A	3004	ACY	O-C	4.29	1.41	1.22
3	A	3001	ACY	O-C	4.21	1.41	1.22
3	B	3005	ACY	O-C	4.20	1.41	1.22
3	B	3002	ACY	O-C	4.14	1.41	1.22
3	B	3003	ACY	O-C	4.11	1.41	1.22
2	A	2004	SO4	O1-S	3.14	1.63	1.46
2	B	2006	SO4	O1-S	3.13	1.63	1.46
2	A	2009	SO4	O1-S	3.11	1.62	1.46
2	B	2008	SO4	O1-S	3.11	1.62	1.46
2	A	2007	SO4	O1-S	3.10	1.62	1.46
2	B	2010	SO4	O1-S	3.08	1.62	1.46
2	B	2005	SO4	O1-S	3.07	1.62	1.46
2	A	2001	SO4	O1-S	2.91	1.61	1.46
2	B	2003	SO4	O1-S	2.85	1.61	1.46
2	A	2002	SO4	O1-S	2.81	1.61	1.46
2	B	2010	SO4	O3-S	-2.12	1.30	1.47
2	A	2002	SO4	O3-S	-2.09	1.30	1.47
2	A	2009	SO4	O3-S	-2.08	1.30	1.47
2	A	2004	SO4	O3-S	-2.08	1.30	1.47
2	B	2006	SO4	O3-S	-2.06	1.30	1.47
2	B	2008	SO4	O3-S	-2.06	1.30	1.47
2	B	2005	SO4	O3-S	-2.06	1.31	1.47
2	A	2001	SO4	O3-S	-2.05	1.31	1.47
2	A	2007	SO4	O3-S	-2.05	1.31	1.47
2	B	2003	SO4	O3-S	-2.00	1.31	1.47

There are no bond angle outliers.

There are no chirality outliers.

All (4) torsion outliers are listed below:

Mol	Chain	Res	Type	Atoms
4	B	1001	GOL	O1-C1-C2-C3
4	B	1001	GOL	O1-C1-C2-O2
4	B	1001	GOL	C1-C2-C3-O3
4	B	1001	GOL	O2-C2-C3-O3

There are no ring outliers.

4 monomers are involved in 4 short contacts:

Mol	Chain	Res	Type	Clashes	Symm-Clashes
3	B	3003	ACY	1	0
2	B	2008	SO4	1	0

Continued on next page...

Continued from previous page...

Mol	Chain	Res	Type	Clashes	Symm-Clashes
3	B	3005	ACY	1	0
4	B	1001	GOL	1	0

5.7 Other polymers [i](#)

There are no such residues in this entry.

5.8 Polymer linkage issues [i](#)

There are no chain breaks in this entry.

6 Fit of model and data

6.1 Protein, DNA and RNA chains

In the following table, the column labelled ‘#RSRZ > 2’ contains the number (and percentage) of RSRZ outliers, followed by percent RSRZ outliers for the chain as percentile scores relative to all X-ray entries and entries of similar resolution. The OWAB column contains the minimum, median, 95th percentile and maximum values of the occupancy-weighted average B-factor per residue. The column labelled ‘Q < 0.9’ lists the number of (and percentage) of residues with an average occupancy less than 0.9.

Mol	Chain	Analysed	<RSRZ>	#RSRZ>2	OWAB(Å ²)	Q<0.9
1	A	254/254 (100%)	0.09	11 (4%) 35 29	12, 19, 38, 57	0
1	B	254/254 (100%)	0.12	10 (3%) 39 33	12, 20, 34, 50	1 (0%)
All	All	508/508 (100%)	0.11	21 (4%) 37 31	12, 20, 36, 57	1 (0%)

All (21) RSRZ outliers are listed below:

Mol	Chain	Res	Type	RSRZ
1	B	185	LEU	4.8
1	B	189	HIS	4.8
1	A	61	LEU	4.4
1	B	254	GLY	4.2
1	A	254	GLY	4.1
1	A	63	ARG	3.5
1	A	62	ILE	3.3
1	B	186	ALA	3.0
1	B	165	ARG	2.9
1	B	184	ASP	2.7
1	B	187	THR	2.7
1	A	251	GLU	2.6
1	B	30	GLU	2.3
1	A	241	ARG	2.3
1	A	244	ASP	2.2
1	A	65	VAL	2.2
1	A	228	GLY	2.2
1	B	188	LEU	2.2
1	A	64	GLU	2.1
1	B	201	LEU	2.1
1	A	200	ARG	2.0

6.2 Non-standard residues in protein, DNA, RNA chains [i](#)

There are no non-standard protein/DNA/RNA residues in this entry.

6.3 Carbohydrates [i](#)

There are no monosaccharides in this entry.

6.4 Ligands [i](#)

In the following table, the Atoms column lists the number of modelled atoms in the group and the number defined in the chemical component dictionary. The B-factors column lists the minimum, median, 95th percentile and maximum values of B factors of atoms in the group. The column labelled 'Q< 0.9' lists the number of atoms with occupancy less than 0.9.

Mol	Type	Chain	Res	Atoms	RSCC	RSR	B-factors(\AA^2)	Q<0.9
4	GOL	B	1001	6/6	0.64	0.21	44,45,45,45	0
3	ACY	A	3004	4/4	0.72	0.23	34,36,37,37	0
3	ACY	B	3005	4/4	0.75	0.21	25,26,29,31	0
2	SO4	A	2007	5/5	0.82	0.22	61,62,63,63	0
3	ACY	B	3003	4/4	0.83	0.21	42,43,43,43	0
3	ACY	B	3002	4/4	0.84	0.17	31,33,34,36	0
2	SO4	B	2008	5/5	0.86	0.23	70,70,70,70	0
2	SO4	B	2006	5/5	0.86	0.19	52,53,53,53	0
3	ACY	A	3001	4/4	0.88	0.13	46,46,46,47	0
2	SO4	B	2010	5/5	0.88	0.21	69,69,70,71	0
2	SO4	A	2004	5/5	0.90	0.23	43,44,44,45	0
2	SO4	B	2005	5/5	0.93	0.22	42,42,44,45	0
2	SO4	A	2009	5/5	0.96	0.09	53,53,54,54	0
2	SO4	A	2001	5/5	0.98	0.10	22,24,24,27	0
2	SO4	B	2003	5/5	0.98	0.07	20,22,24,24	0
2	SO4	A	2002	5/5	0.99	0.13	20,26,28,30	0

6.5 Other polymers [i](#)

There are no such residues in this entry.