



Full wwPDB X-ray Structure Validation Report ⓘ

Nov 21, 2023 – 06:56 PM JST

PDB ID : 7VFQ
Title : Wild type GltA from Bifidobacterium infantis JCM 1222 complexed with lacto-N-tetraose
Authors : Sato, M.; Sakanaka, M.; Katayama, T.; Fushinobu, S.
Deposited on : 2021-09-13
Resolution : 1.55 Å(reported)

This is a Full wwPDB X-ray Structure Validation Report for a publicly released PDB entry.

We welcome your comments at validation@mail.wwpdb.org

A user guide is available at

<https://www.wwpdb.org/validation/2017/XrayValidationReportHelp>

with specific help available everywhere you see the ⓘ symbol.

The types of validation reports are described at

<http://www.wwpdb.org/validation/2017/FAQs#types>.

The following versions of software and data (see [references ⓘ](#)) were used in the production of this report:

MolProbity : 4.02b-467
Mogul : 1.8.5 (274361), CSD as541be (2020)
Xtriage (Phenix) : 1.13
EDS : 2.36
Percentile statistics : 20191225.v01 (using entries in the PDB archive December 25th 2019)
Refmac : 5.8.0158
CCP4 : 7.0.044 (Gargrove)
Ideal geometry (proteins) : Engh & Huber (2001)
Ideal geometry (DNA, RNA) : Parkinson et al. (1996)
Validation Pipeline (wwPDB-VP) : 2.36

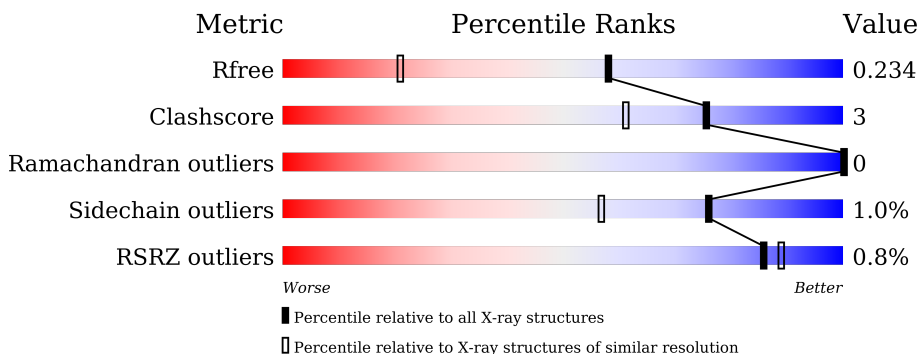
1 Overall quality at a glance

The following experimental techniques were used to determine the structure:

X-RAY DIFFRACTION

The reported resolution of this entry is 1.55 Å.

Percentile scores (ranging between 0-100) for global validation metrics of the entry are shown in the following graphic. The table shows the number of entries on which the scores are based.



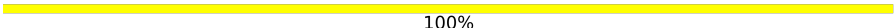
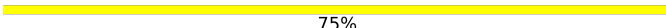
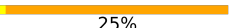
Metric	Whole archive (#Entries)	Similar resolution (#Entries, resolution range(Å))
R_{free}	130704	1483 (1.56-1.56)
Clashscore	141614	1529 (1.56-1.56)
Ramachandran outliers	138981	1498 (1.56-1.56)
Sidechain outliers	138945	1495 (1.56-1.56)
RSRZ outliers	127900	1465 (1.56-1.56)

The table below summarises the geometric issues observed across the polymeric chains and their fit to the electron density. The red, orange, yellow and green segments of the lower bar indicate the fraction of residues that contain outliers for ≥ 3 , 2, 1 and 0 types of geometric quality criteria respectively. A grey segment represents the fraction of residues that are not modelled. The numeric value for each fraction is indicated below the corresponding segment, with a dot representing fractions $\leq 5\%$. The upper red bar (where present) indicates the fraction of residues that have poor fit to the electron density. The numeric value is given above the bar.

Mol	Chain	Length	Quality of chain
1	A	411	
1	B	411	
1	C	411	
1	D	411	
2	E	4	
2	F	4	

Continued on next page...

Continued from previous page...

Mol	Chain	Length	Quality of chain
2	G	4	 100%
2	H	4	 75%  25%

2 Entry composition i

There are 4 unique types of molecules in this entry. The entry contains 13682 atoms, of which 0 are hydrogens and 0 are deuteriums.

In the tables below, the ZeroOcc column contains the number of atoms modelled with zero occupancy, the AltConf column contains the number of residues with at least one atom in alternate conformation and the Trace column contains the number of residues modelled with at most 2 atoms.

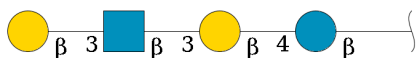
- Molecule 1 is a protein called Extracellular solute-binding protein, family 1.

Mol	Chain	Residues	Atoms					ZeroOcc	AltConf	Trace
			Total	C	N	O	S			
1	A	394	2971	1879	485	593	14	0	0	0
1	B	396	2987	1887	488	598	14	0	0	0
1	C	397	2991	1889	489	599	14	0	0	0
1	D	397	2991	1889	489	599	14	0	0	0

There are 4 discrepancies between the modelled and reference sequences:

Chain	Residue	Modelled	Actual	Comment	Reference
A	28	MET	-	initiating methionine	UNP B7GN82
B	28	MET	-	initiating methionine	UNP B7GN82
C	28	MET	-	initiating methionine	UNP B7GN82
D	28	MET	-	initiating methionine	UNP B7GN82

- Molecule 2 is an oligosaccharide called beta-D-galactopyranose-(1-3)-2-acetamido-2-deoxy-beta-D-glucopyranose-(1-3)-beta-D-galactopyranose-(1-4)-beta-D-glucopyranose.



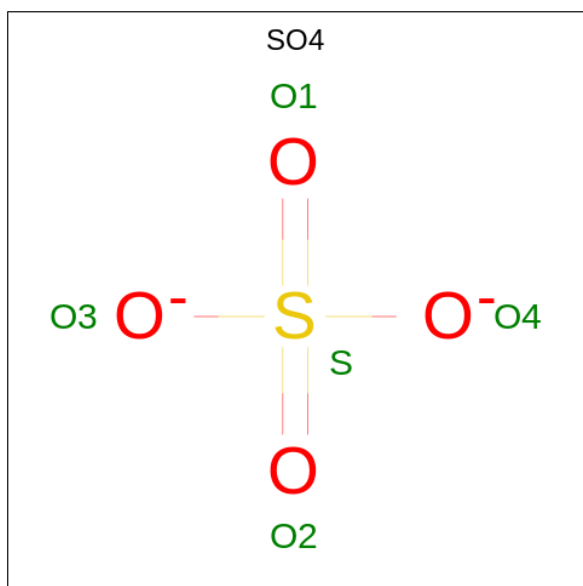
Mol	Chain	Residues	Atoms				ZeroOcc	AltConf	Trace
			Total	C	N	O			
2	E	4	48	26	1	21	0	0	0
2	F	4	48	26	1	21	0	0	0
2	G	4	48	26	1	21	0	0	0

Continued on next page...

Continued from previous page...

Mol	Chain	Residues	Atoms				ZeroOcc	AltConf	Trace
			Total	C	N	O			
2	H	4	48	26	1	21	0	0	0

- Molecule 3 is SULFATE ION (three-letter code: SO4) (formula: O₄S).



Mol	Chain	Residues	Atoms			ZeroOcc	AltConf
			Total	O	S		
3	A	1	5	4	1	0	0
3	B	1	5	4	1	0	0
3	B	1	5	4	1	0	0
3	C	1	5	4	1	0	0
3	D	1	5	4	1	0	0

- Molecule 4 is water.

Mol	Chain	Residues	Atoms		ZeroOcc	AltConf
			Total	O		
4	A	360	360	360	0	0
4	B	396	396	396	0	0
4	C	365	365	365	0	0

Continued on next page...

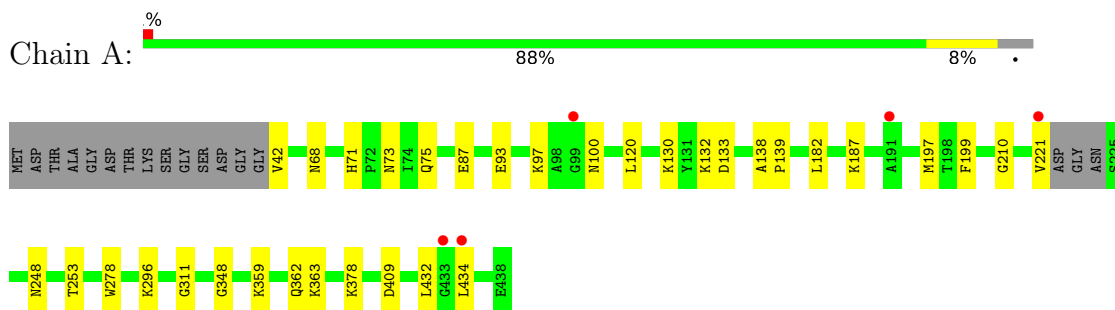
Continued from previous page...

Mol	Chain	Residues	Atoms		ZeroOcc	AltConf
4	D	404	Total 404	O 404	0	0

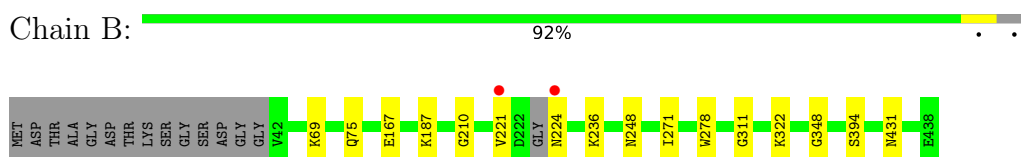
3 Residue-property plots [i](#)

These plots are drawn for all protein, RNA, DNA and oligosaccharide chains in the entry. The first graphic for a chain summarises the proportions of the various outlier classes displayed in the second graphic. The second graphic shows the sequence view annotated by issues in geometry and electron density. Residues are color-coded according to the number of geometric quality criteria for which they contain at least one outlier: green = 0, yellow = 1, orange = 2 and red = 3 or more. A red dot above a residue indicates a poor fit to the electron density ($RSRZ > 2$). Stretches of 2 or more consecutive residues without any outlier are shown as a green connector. Residues present in the sample, but not in the model, are shown in grey.

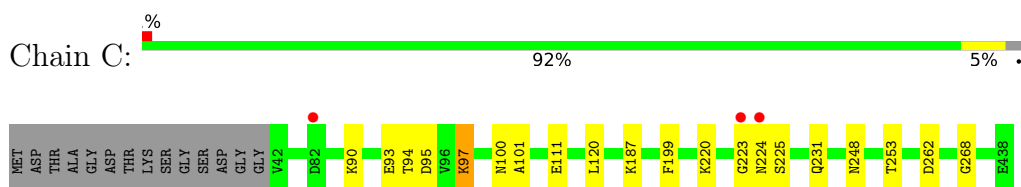
- Molecule 1: Extracellular solute-binding protein, family 1



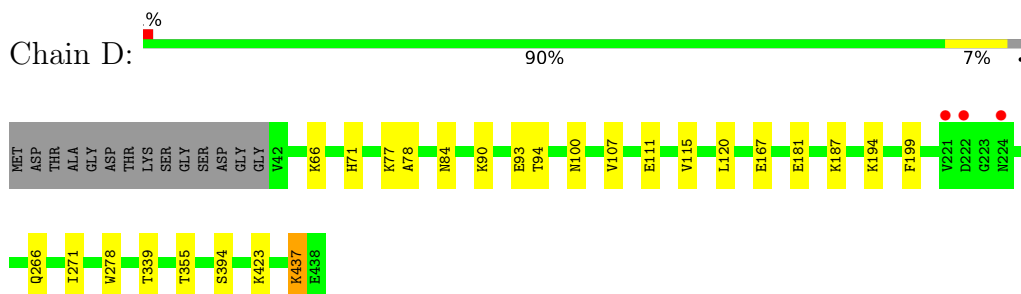
- Molecule 1: Extracellular solute-binding protein, family 1



- Molecule 1: Extracellular solute-binding protein, family 1



- Molecule 1: Extracellular solute-binding protein, family 1





- Molecule 2: beta-D-galactopyranose-(1-3)-2-acetamido-2-deoxy-beta-D-glucopyranose-(1-3)-beta-D-galactopyranose-(1-4)-beta-D-glucopyranose

Chain E:  100%

BGC1
GAL2
MAG3
GAL4

- Molecule 2: beta-D-galactopyranose-(1-3)-2-acetamido-2-deoxy-beta-D-glucopyranose-(1-3)-beta-D-galactopyranose-(1-4)-beta-D-glucopyranose

Chain F:  75%  25%



BGC1
GAL2
MAG3
GAL4

- Molecule 2: beta-D-galactopyranose-(1-3)-2-acetamido-2-deoxy-beta-D-glucopyranose-(1-3)-beta-D-galactopyranose-(1-4)-beta-D-glucopyranose

Chain G:  100%

BGC1
GAL2
MAG3
GAL4

- Molecule 2: beta-D-galactopyranose-(1-3)-2-acetamido-2-deoxy-beta-D-glucopyranose-(1-3)-beta-D-galactopyranose-(1-4)-beta-D-glucopyranose

Chain H:  75%  25%

BGC1
GAL2
MAG3
GAL4

4 Data and refinement statistics i

Property	Value	Source
Space group	P 1	Depositor
Cell constants a, b, c, α , β , γ	39.14Å 84.38Å 106.69Å 97.41° 92.25° 89.92°	Depositor
Resolution (Å)	47.59 – 1.55 47.54 – 1.55	Depositor EDS
% Data completeness (in resolution range)	95.5 (47.59-1.55) 95.5 (47.54-1.55)	Depositor EDS
R_{merge}	0.07	Depositor
R_{sym}	(Not available)	Depositor
$\langle I/\sigma(I) \rangle$ ¹	2.41 (at 1.55Å)	Xtrriage
Refinement program	REFMAC 5.8.0267	Depositor
R, R_{free}	0.191 , 0.227 0.201 , 0.234	Depositor DCC
R_{free} test set	9435 reflections (5.03%)	wwPDB-VP
Wilson B-factor (Å ²)	9.2	Xtrriage
Anisotropy	0.089	Xtrriage
Bulk solvent k_{sol} (e/Å ³), B_{sol} (Å ²)	0.36 , 41.3	EDS
L-test for twinning ²	$\langle L \rangle = 0.49$, $\langle L^2 \rangle = 0.32$	Xtrriage
Estimated twinning fraction	0.078 for h,-k,-l	Xtrriage
F_o, F_c correlation	0.95	EDS
Total number of atoms	13682	wwPDB-VP
Average B, all atoms (Å ²)	12.0	wwPDB-VP

Xtrriage's analysis on translational NCS is as follows: *The analyses of the Patterson function reveals a significant off-origin peak that is 73.01 % of the origin peak, indicating pseudo-translational symmetry. The chance of finding a peak of this or larger height randomly in a structure without pseudo-translational symmetry is equal to 1.9854e-06. The detected translational NCS is most likely also responsible for the elevated intensity ratio.*

¹Intensities estimated from amplitudes.

²Theoretical values of $\langle |L| \rangle$, $\langle L^2 \rangle$ for acentric reflections are 0.5, 0.333 respectively for untwinned datasets, and 0.375, 0.2 for perfectly twinned datasets.

5 Model quality

5.1 Standard geometry

Bond lengths and bond angles in the following residue types are not validated in this section: GAL, SO4, NAG, BGC

The Z score for a bond length (or angle) is the number of standard deviations the observed value is removed from the expected value. A bond length (or angle) with $|Z| > 5$ is considered an outlier worth inspection. RMSZ is the root-mean-square of all Z scores of the bond lengths (or angles).

Mol	Chain	Bond lengths		Bond angles	
		RMSZ	# Z >5	RMSZ	# Z >5
1	A	0.74	1/3033 (0.0%)	0.83	0/4112
1	B	0.74	0/3049	0.84	0/4134
1	C	0.72	1/3054 (0.0%)	0.83	0/4142
1	D	0.74	0/3054	0.84	0/4142
All	All	0.74	2/12190 (0.0%)	0.84	0/16530

All (2) bond length outliers are listed below:

Mol	Chain	Res	Type	Atoms	Z	Observed(Å)	Ideal(Å)
1	A	87	GLU	CD-OE1	5.62	1.31	1.25
1	C	111	GLU	CD-OE1	5.30	1.31	1.25

There are no bond angle outliers.

There are no chirality outliers.

There are no planarity outliers.

5.2 Too-close contacts

In the following table, the Non-H and H(model) columns list the number of non-hydrogen atoms and hydrogen atoms in the chain respectively. The H(added) column lists the number of hydrogen atoms added and optimized by MolProbity. The Clashes column lists the number of clashes within the asymmetric unit, whereas Symm-Clashes lists symmetry-related clashes.

Mol	Chain	Non-H	H(model)	H(added)	Clashes	Symm-Clashes
1	A	2971	0	2886	22	0
1	B	2987	0	2896	13	0
1	C	2991	0	2900	14	0
1	D	2991	0	2900	27	0
2	E	48	0	42	0	0

Continued on next page...

Continued from previous page...

Mol	Chain	Non-H	H(model)	H(added)	Clashes	Symm-Clashes
2	F	48	0	42	1	0
2	G	48	0	42	0	0
2	H	48	0	42	2	0
3	A	5	0	0	0	0
3	B	10	0	0	0	0
3	C	5	0	0	0	0
3	D	5	0	0	0	0
4	A	360	0	0	10	0
4	B	396	0	0	4	0
4	C	365	0	0	5	0
4	D	404	0	0	15	0
All	All	13682	0	11750	73	0

The all-atom clashscore is defined as the number of clashes found per 1000 atoms (including hydrogen atoms). The all-atom clashscore for this structure is 3.

All (73) close contacts within the same asymmetric unit are listed below, sorted by their clash magnitude.

Atom-1	Atom-2	Interatomic distance (Å)	Clash overlap (Å)
1:D:437:LYS:CE	4:D:601:HOH:O	2.12	0.98
1:D:437:LYS:NZ	4:D:601:HOH:O	1.81	0.96
1:D:339:THR:HG21	4:D:637:HOH:O	1.73	0.88
1:D:66:LYS:HE3	4:D:612:HOH:O	1.76	0.84
1:B:221:VAL:HG23	4:B:778:HOH:O	1.81	0.80
1:D:437:LYS:HE3	4:D:601:HOH:O	1.77	0.77
1:A:42:VAL:N	4:A:602:HOH:O	2.22	0.72
1:A:75:GLN:NE2	1:D:100:ASN:HD22	1.87	0.72
1:D:236:LYS:HG3	4:D:607:HOH:O	1.88	0.72
1:A:221:VAL:C	4:A:601:HOH:O	2.29	0.69
1:A:73:ASN:ND2	4:A:603:HOH:O	2.25	0.68
1:D:423:LYS:NZ	4:D:603:HOH:O	2.27	0.64
1:B:75:GLN:NE2	1:C:100:ASN:HD22	1.98	0.61
1:A:187:LYS:HE2	1:A:248:ASN:CG	2.22	0.60
1:C:93:GLU:HG3	1:C:120:LEU:HD21	1.84	0.59
1:D:77:LYS:NZ	1:D:78:ALA:O	2.37	0.58
1:A:71:HIS:HE1	4:A:833:HOH:O	1.86	0.57
1:A:221:VAL:O	4:A:601:HOH:O	2.17	0.57
1:C:94:THR:HA	1:C:97:LYS:HD3	1.86	0.57
1:D:71:HIS:HE1	4:D:736:HOH:O	1.86	0.56
1:D:93:GLU:CG	1:D:120:LEU:HD11	2.35	0.55
1:B:224:ASN:ND2	4:B:606:HOH:O	2.37	0.54

Continued on next page...

Continued from previous page...

Atom-1	Atom-2	Interatomic distance (Å)	Clash overlap (Å)
1:B:394:SER:HB3	4:B:897:HOH:O	2.09	0.53
1:B:75:GLN:HE22	1:C:100:ASN:HD22	1.56	0.52
1:D:84:ASN:HB3	4:D:773:HOH:O	2.08	0.52
1:D:167:GLU:HG2	1:D:271:ILE:HG21	1.92	0.52
1:B:69:LYS:HE2	4:C:625:HOH:O	2.10	0.50
1:D:93:GLU:HG2	1:D:120:LEU:HD11	1.93	0.50
1:A:362:GLN:NE2	4:A:607:HOH:O	2.36	0.49
1:A:210:GLY:O	1:A:311:GLY:HA3	2.13	0.48
1:D:93:GLU:HG3	1:D:120:LEU:HD11	1.96	0.48
1:C:90:LYS:O	1:C:94:THR:HG23	2.14	0.48
1:C:199:PHE:O	1:C:253:THR:HA	2.14	0.47
1:D:236:LYS:HE3	4:D:607:HOH:O	2.15	0.47
1:D:394:SER:HB3	4:D:911:HOH:O	2.14	0.46
1:A:182:LEU:HD21	1:A:197:MET:HE2	1.97	0.46
1:C:223:GLY:HA3	4:C:609:HOH:O	2.16	0.45
1:C:95:ASP:HB3	1:C:101:ALA:HA	1.99	0.45
1:D:199:PHE:O	1:D:253:THR:HA	2.17	0.44
1:A:138:ALA:HB3	1:A:139:PRO:HD3	2.00	0.44
1:B:278:TRP:HA	1:B:348:GLY:O	2.18	0.44
1:C:93:GLU:CG	1:C:120:LEU:HD21	2.47	0.44
4:D:954:HOH:O	2:H:3:NAG:H82	2.16	0.44
1:D:278:TRP:CH2	2:H:3:NAG:H3	2.53	0.44
1:D:181:GLU:OE2	4:D:602:HOH:O	2.21	0.43
1:D:187:LYS:HE2	1:D:248:ASN:CG	2.38	0.43
1:A:100:ASN:HA	4:A:608:HOH:O	2.18	0.43
1:A:187:LYS:HE2	1:A:248:ASN:ND2	2.34	0.43
1:B:167:GLU:HG2	1:B:271:ILE:HG21	2.01	0.42
1:C:262:ASP:OD2	4:C:601:HOH:O	2.22	0.42
1:A:133:ASP:HB2	4:A:884:HOH:O	2.19	0.42
1:C:187:LYS:HE2	1:C:248:ASN:CG	2.39	0.42
1:C:220:LYS:HE3	1:D:266:GLN:OE1	2.19	0.42
1:A:199:PHE:O	1:A:253:THR:HA	2.19	0.42
1:D:90:LYS:O	1:D:94:THR:HG23	2.19	0.41
1:D:194:LYS:HE3	4:D:662:HOH:O	2.20	0.41
1:B:69:LYS:CE	4:C:625:HOH:O	2.69	0.41
1:B:278:TRP:CH2	2:F:3:NAG:H3	2.55	0.41
1:C:231:GLN:HA	1:C:231:GLN:OE1	2.20	0.41
1:B:187:LYS:HE2	1:B:248:ASN:CG	2.40	0.41
1:A:296:LYS:HD3	4:A:633:HOH:O	2.20	0.41
1:D:111:GLU:O	1:D:115:VAL:HG22	2.21	0.41
1:A:132:LYS:HE2	4:A:714:HOH:O	2.21	0.41

Continued on next page...

Continued from previous page...

Atom-1	Atom-2	Interatomic distance (Å)	Clash overlap (Å)
1:A:363:LYS:HA	1:A:363:LYS:HD2	1.90	0.41
1:D:355:THR:HG21	4:D:637:HOH:O	2.20	0.41
1:A:93:GLU:HG3	1:A:120:LEU:HD21	2.03	0.40
1:A:409:ASP:C	1:A:409:ASP:OD1	2.60	0.40
1:C:268:GLY:HA2	4:C:705:HOH:O	2.22	0.40
1:A:68:ASN:HB3	1:A:75:GLN:HE22	1.86	0.40
1:B:210:GLY:O	1:B:311:GLY:HA3	2.22	0.40
1:B:431:ASN:HB2	4:B:799:HOH:O	2.21	0.40
1:A:278:TRP:HA	1:A:348:GLY:O	2.21	0.40
1:D:107:VAL:HG11	1:D:115:VAL:HG21	2.04	0.40

There are no symmetry-related clashes.

5.3 Torsion angles [i](#)

5.3.1 Protein backbone [i](#)

In the following table, the Percentiles column shows the percent Ramachandran outliers of the chain as a percentile score with respect to all X-ray entries followed by that with respect to entries of similar resolution.

The Analysed column shows the number of residues for which the backbone conformation was analysed, and the total number of residues.

Mol	Chain	Analysed	Favoured	Allowed	Outliers	Percentiles	
1	A	390/411 (95%)	385 (99%)	5 (1%)	0	100	100
1	B	392/411 (95%)	387 (99%)	5 (1%)	0	100	100
1	C	395/411 (96%)	390 (99%)	5 (1%)	0	100	100
1	D	395/411 (96%)	389 (98%)	6 (2%)	0	100	100
All	All	1572/1644 (96%)	1551 (99%)	21 (1%)	0	100	100

There are no Ramachandran outliers to report.

5.3.2 Protein sidechains [i](#)

In the following table, the Percentiles column shows the percent sidechain outliers of the chain as a percentile score with respect to all X-ray entries followed by that with respect to entries of similar resolution.

The Analysed column shows the number of residues for which the sidechain conformation was analysed, and the total number of residues.

Mol	Chain	Analysed	Rotameric	Outliers	Percentiles	
1	A	308/319 (97%)	302 (98%)	6 (2%)	57	28
1	B	310/319 (97%)	308 (99%)	2 (1%)	86	73
1	C	310/319 (97%)	307 (99%)	3 (1%)	76	57
1	D	310/319 (97%)	309 (100%)	1 (0%)	92	85
All	All	1238/1276 (97%)	1226 (99%)	12 (1%)	76	57

All (12) residues with a non-rotameric sidechain are listed below:

Mol	Chain	Res	Type
1	A	97	LYS
1	A	130	LYS
1	A	359	LYS
1	A	378	LYS
1	A	432	LEU
1	A	434	LEU
1	B	236	LYS
1	B	322	LYS
1	C	97	LYS
1	C	224	ASN
1	C	225	SER
1	D	437	LYS

Sometimes sidechains can be flipped to improve hydrogen bonding and reduce clashes. All (16) such sidechains are listed below:

Mol	Chain	Res	Type
1	A	71	HIS
1	A	73	ASN
1	A	75	GLN
1	A	211	GLN
1	B	75	GLN
1	B	211	GLN
1	B	326	HIS
1	C	73	ASN
1	C	75	GLN
1	C	211	GLN
1	C	326	HIS
1	D	71	HIS
1	D	75	GLN

Continued on next page...

Continued from previous page...

Mol	Chain	Res	Type
1	D	122	GLN
1	D	224	ASN
1	D	402	GLN

5.3.3 RNA [i](#)

There are no RNA molecules in this entry.

5.4 Non-standard residues in protein, DNA, RNA chains [i](#)

There are no non-standard protein/DNA/RNA residues in this entry.

5.5 Carbohydrates [i](#)

16 monosaccharides are modelled in this entry.

In the following table, the Counts columns list the number of bonds (or angles) for which Mogul statistics could be retrieved, the number of bonds (or angles) that are observed in the model and the number of bonds (or angles) that are defined in the Chemical Component Dictionary. The Link column lists molecule types, if any, to which the group is linked. The Z score for a bond length (or angle) is the number of standard deviations the observed value is removed from the expected value. A bond length (or angle) with $|Z| > 2$ is considered an outlier worth inspection. RMSZ is the root-mean-square of all Z scores of the bond lengths (or angles).

Mol	Type	Chain	Res	Link	Bond lengths			Bond angles		
					Counts	RMSZ	# Z > 2	Counts	RMSZ	# Z > 2
2	BGC	E	1	2	12,12,12	0.76	0	17,17,17	1.51	3 (17%)
2	GAL	E	2	2	11,11,12	1.00	0	15,15,17	1.44	2 (13%)
2	NAG	E	3	2	14,14,15	0.79	0	17,19,21	1.04	2 (11%)
2	GAL	E	4	2	11,11,12	0.93	0	15,15,17	0.95	1 (6%)
2	BGC	F	1	2	12,12,12	0.88	0	17,17,17	1.65	4 (23%)
2	GAL	F	2	2	11,11,12	0.99	1 (9%)	15,15,17	1.05	1 (6%)
2	NAG	F	3	2	14,14,15	0.63	0	17,19,21	1.13	2 (11%)
2	GAL	F	4	2	11,11,12	1.27	1 (9%)	15,15,17	1.61	4 (26%)
2	BGC	G	1	2	12,12,12	0.86	0	17,17,17	1.69	3 (17%)
2	GAL	G	2	2	11,11,12	0.83	0	15,15,17	1.76	2 (13%)
2	NAG	G	3	2	14,14,15	0.74	0	17,19,21	1.18	2 (11%)
2	GAL	G	4	2	11,11,12	1.27	1 (9%)	15,15,17	1.08	1 (6%)
2	BGC	H	1	2	12,12,12	1.10	1 (8%)	17,17,17	2.15	8 (47%)

Mol	Type	Chain	Res	Link	Bond lengths			Bond angles		
					Counts	RMSZ	# Z > 2	Counts	RMSZ	# Z > 2
2	GAL	H	2	2	11,11,12	0.78	0	15,15,17	1.53	3 (20%)
2	NAG	H	3	2	14,14,15	0.92	0	17,19,21	1.46	4 (23%)
2	GAL	H	4	2	11,11,12	1.15	1 (9%)	15,15,17	0.76	0

In the following table, the Chirals column lists the number of chiral outliers, the number of chiral centers analysed, the number of these observed in the model and the number defined in the Chemical Component Dictionary. Similar counts are reported in the Torsion and Rings columns. '-' means no outliers of that kind were identified.

Mol	Type	Chain	Res	Link	Chirals	Torsions	Rings
2	BGC	E	1	2	-	0/2/22/22	0/1/1/1
2	GAL	E	2	2	-	0/2/19/22	0/1/1/1
2	NAG	E	3	2	-	0/6/23/26	0/1/1/1
2	GAL	E	4	2	-	0/2/19/22	0/1/1/1
2	BGC	F	1	2	-	0/2/22/22	0/1/1/1
2	GAL	F	2	2	-	0/2/19/22	0/1/1/1
2	NAG	F	3	2	-	0/6/23/26	0/1/1/1
2	GAL	F	4	2	-	0/2/19/22	0/1/1/1
2	BGC	G	1	2	-	0/2/22/22	0/1/1/1
2	GAL	G	2	2	-	0/2/19/22	0/1/1/1
2	NAG	G	3	2	-	0/6/23/26	0/1/1/1
2	GAL	G	4	2	-	0/2/19/22	0/1/1/1
2	BGC	H	1	2	-	0/2/22/22	0/1/1/1
2	GAL	H	2	2	-	0/2/19/22	0/1/1/1
2	NAG	H	3	2	-	0/6/23/26	0/1/1/1
2	GAL	H	4	2	-	0/2/19/22	0/1/1/1

All (5) bond length outliers are listed below:

Mol	Chain	Res	Type	Atoms	Z	Observed(Å)	Ideal(Å)
2	G	4	GAL	O5-C1	-3.54	1.38	1.43
2	H	4	GAL	O4-C4	2.73	1.49	1.43
2	F	4	GAL	C4-C5	-2.40	1.48	1.53
2	H	1	BGC	O4-C4	2.38	1.48	1.43
2	F	2	GAL	C2-C3	2.10	1.55	1.52

All (42) bond angle outliers are listed below:

Mol	Chain	Res	Type	Atoms	Z	Observed(°)	Ideal(°)
2	G	2	GAL	C1-C2-C3	4.83	115.60	109.67
2	H	1	BGC	C1-O5-C5	-4.59	105.01	113.66

Continued on next page...

Continued from previous page...

Mol	Chain	Res	Type	Atoms	Z	Observed(°)	Ideal(°)
2	G	1	BGC	O4-C4-C5	-4.13	99.03	109.30
2	E	1	BGC	O5-C1-C2	-3.76	103.58	110.28
2	F	1	BGC	O5-C1-C2	-3.41	104.20	110.28
2	H	3	NAG	C1-O5-C5	-3.33	107.68	112.19
2	E	2	GAL	C1-O5-C5	3.29	116.65	112.19
2	F	4	GAL	C1-C2-C3	-3.29	105.63	109.67
2	E	2	GAL	O3-C3-C2	-3.20	103.86	109.99
2	F	1	BGC	O4-C4-C3	-3.18	103.01	110.35
2	G	2	GAL	C1-O5-C5	3.14	116.45	112.19
2	F	4	GAL	O2-C2-C1	3.11	115.52	109.15
2	G	1	BGC	C1-O5-C5	-3.11	107.80	113.66
2	F	3	NAG	C1-O5-C5	-3.08	108.02	112.19
2	F	2	GAL	O3-C3-C2	-3.06	104.14	109.99
2	H	1	BGC	C4-C3-C2	3.03	116.11	110.82
2	H	2	GAL	O5-C5-C6	-2.81	102.81	107.20
2	H	1	BGC	O4-C4-C5	-2.72	102.53	109.30
2	H	1	BGC	O3-C3-C4	-2.72	104.07	110.35
2	E	1	BGC	O4-C4-C5	-2.71	102.56	109.30
2	F	4	GAL	O5-C1-C2	2.70	114.94	110.77
2	H	2	GAL	O3-C3-C2	-2.68	104.86	109.99
2	H	1	BGC	O2-C2-C1	-2.62	103.09	109.16
2	H	1	BGC	O5-C5-C6	2.53	112.74	106.44
2	H	1	BGC	O4-C4-C3	-2.51	104.54	110.35
2	F	1	BGC	O4-C4-C5	-2.44	103.24	109.30
2	G	3	NAG	O3-C3-C2	-2.43	104.44	109.47
2	E	1	BGC	O4-C4-C3	-2.42	104.74	110.35
2	H	3	NAG	O3-C3-C2	-2.42	104.45	109.47
2	G	3	NAG	C1-O5-C5	-2.27	109.12	112.19
2	H	3	NAG	C4-C3-C2	-2.24	107.73	111.02
2	F	1	BGC	C1-C2-C3	-2.24	105.67	110.31
2	F	4	GAL	O3-C3-C2	-2.23	105.72	109.99
2	H	2	GAL	C1-O5-C5	2.21	115.19	112.19
2	G	4	GAL	C1-C2-C3	2.19	112.36	109.67
2	G	1	BGC	O5-C5-C6	2.14	111.76	106.44
2	E	3	NAG	O3-C3-C2	-2.12	105.08	109.47
2	F	3	NAG	O3-C3-C2	-2.08	105.16	109.47
2	E	4	GAL	C1-O5-C5	2.06	114.98	112.19
2	H	1	BGC	O2-C2-C3	2.05	115.08	110.35
2	H	3	NAG	O3-C3-C4	2.04	115.07	110.35
2	E	3	NAG	C1-O5-C5	-2.04	109.43	112.19

There are no chirality outliers.

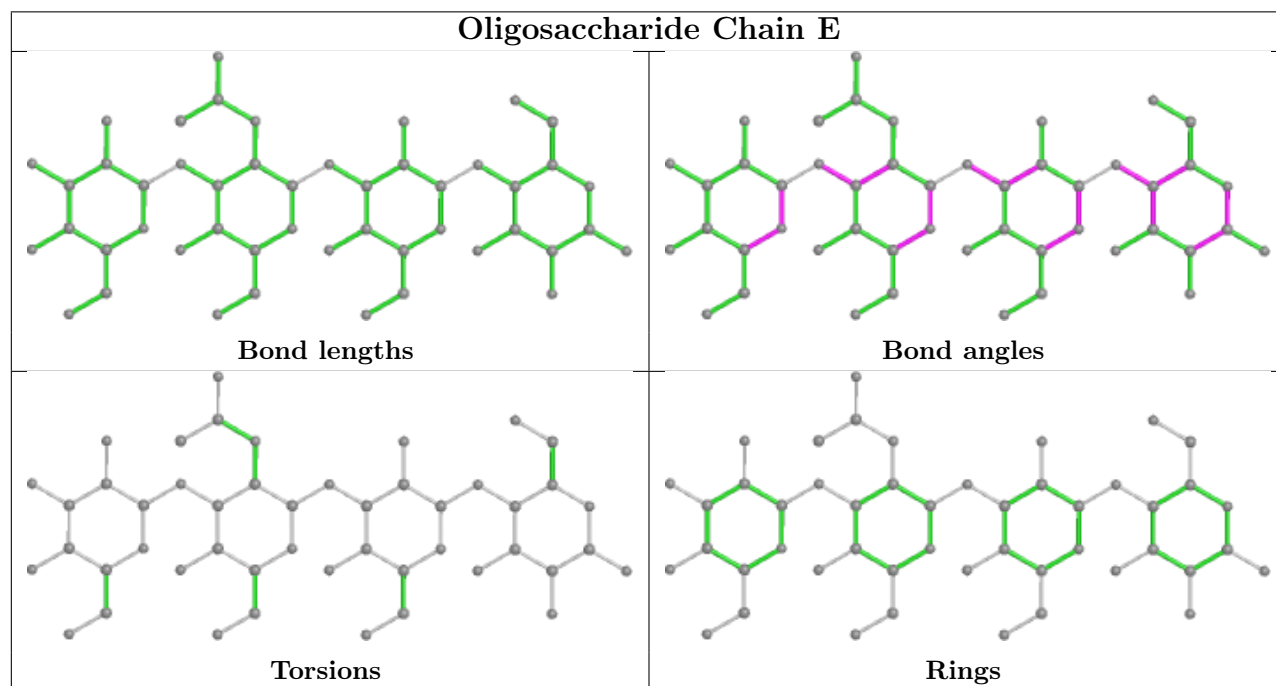
There are no torsion outliers.

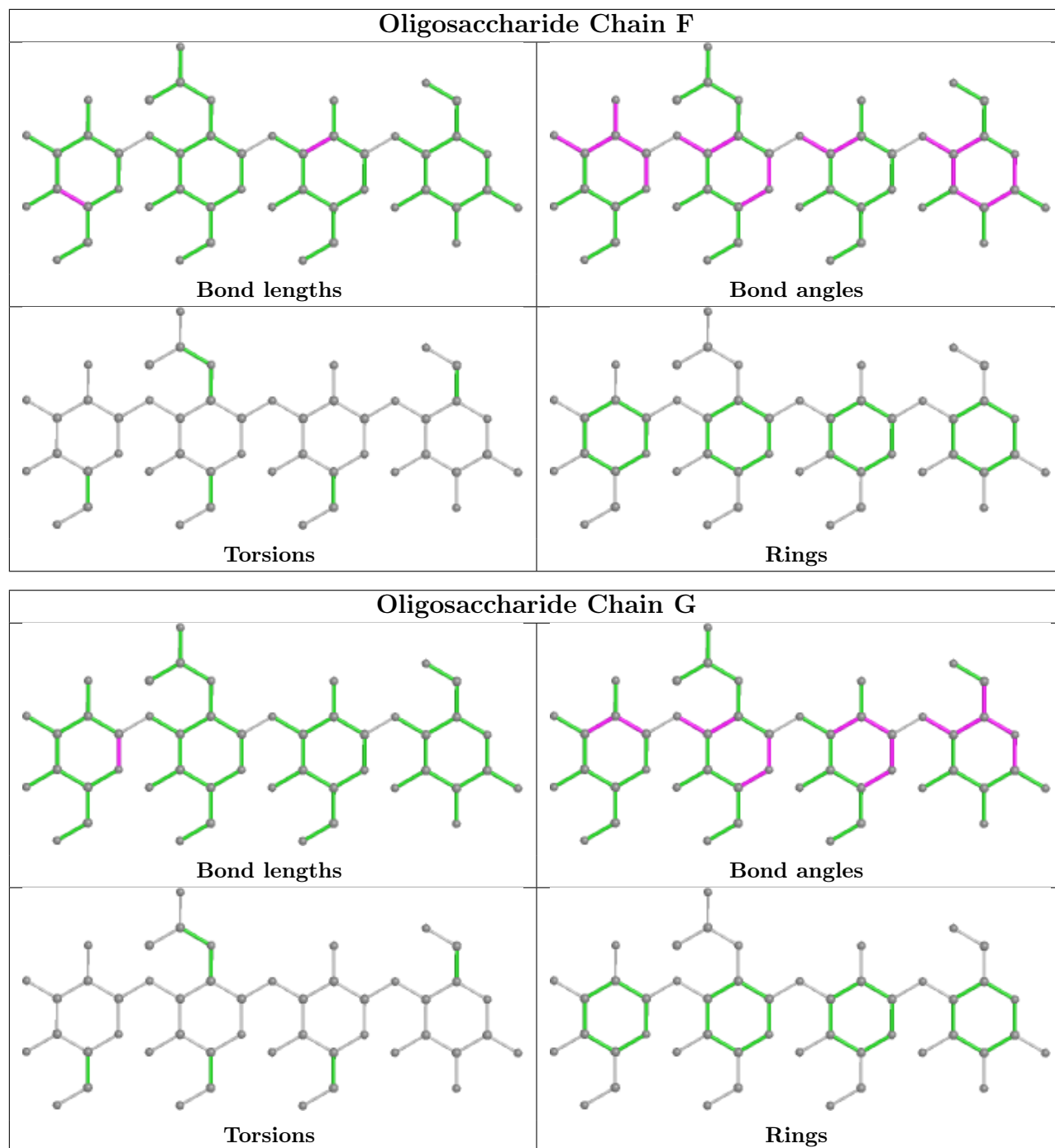
There are no ring outliers.

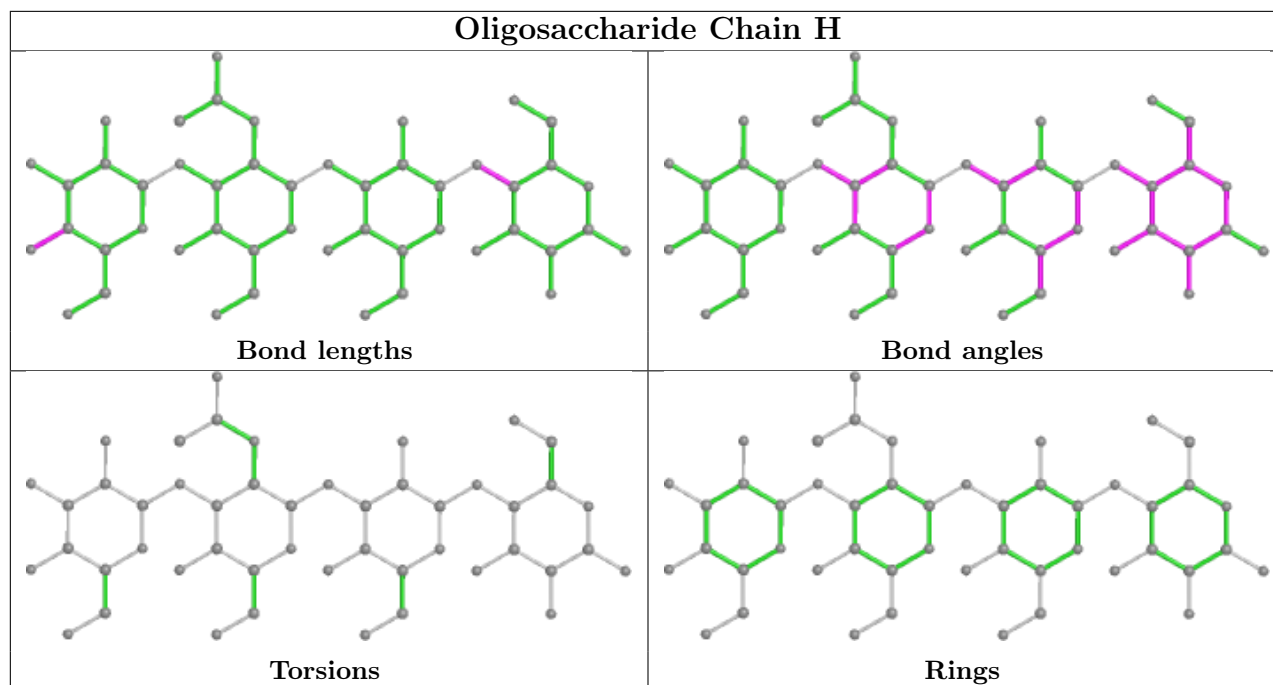
2 monomers are involved in 3 short contacts:

Mol	Chain	Res	Type	Clashes	Symm-Clashes
2	H	3	NAG	2	0
2	F	3	NAG	1	0

The following is a two-dimensional graphical depiction of Mogul quality analysis of bond lengths, bond angles, torsion angles, and ring geometry for oligosaccharide.







5.6 Ligand geometry [i](#)

5 ligands are modelled in this entry.

In the following table, the Counts columns list the number of bonds (or angles) for which Mogul statistics could be retrieved, the number of bonds (or angles) that are observed in the model and the number of bonds (or angles) that are defined in the Chemical Component Dictionary. The Link column lists molecule types, if any, to which the group is linked. The Z score for a bond length (or angle) is the number of standard deviations the observed value is removed from the expected value. A bond length (or angle) with $|Z| > 2$ is considered an outlier worth inspection. RMSZ is the root-mean-square of all Z scores of the bond lengths (or angles).

Mol	Type	Chain	Res	Link	Bond lengths			Bond angles		
					Counts	RMSZ	$\# Z > 2$	Counts	RMSZ	$\# Z > 2$
3	SO4	C	501	-	4,4,4	0.29	0	6,6,6	0.21	0
3	SO4	D	501	-	4,4,4	0.31	0	6,6,6	0.08	0
3	SO4	A	501	-	4,4,4	0.26	0	6,6,6	0.06	0
3	SO4	B	501	-	4,4,4	0.33	0	6,6,6	0.14	0
3	SO4	B	502	-	4,4,4	0.26	0	6,6,6	0.10	0

There are no bond length outliers.

There are no bond angle outliers.

There are no chirality outliers.

There are no torsion outliers.

There are no ring outliers.

No monomer is involved in short contacts.

5.7 Other polymers [i](#)

There are no such residues in this entry.

5.8 Polymer linkage issues [i](#)

There are no chain breaks in this entry.

6 Fit of model and data [i](#)

6.1 Protein, DNA and RNA chains [i](#)

In the following table, the column labelled ‘#RSRZ > 2’ contains the number (and percentage) of RSRZ outliers, followed by percent RSRZ outliers for the chain as percentile scores relative to all X-ray entries and entries of similar resolution. The OWAB column contains the minimum, median, 95th percentile and maximum values of the occupancy-weighted average B-factor per residue. The column labelled ‘Q < 0.9’ lists the number of (and percentage) of residues with an average occupancy less than 0.9.

Mol	Chain	Analysed	<RSRZ>	#RSRZ>2	OWAB(Å ²)	Q<0.9
1	A	394/411 (95%)	-0.02	5 (1%) 77 82	4, 9, 21, 36	0
1	B	396/411 (96%)	-0.05	2 (0%) 91 93	4, 9, 20, 43	0
1	C	397/411 (96%)	-0.00	3 (0%) 86 89	4, 10, 23, 58	0
1	D	397/411 (96%)	-0.03	3 (0%) 86 89	4, 9, 21, 48	0
All	All	1584/1644 (96%)	-0.03	13 (0%) 86 89	4, 9, 21, 58	0

All (13) RSRZ outliers are listed below:

Mol	Chain	Res	Type	RSRZ
1	C	224	ASN	4.9
1	A	221	VAL	4.6
1	D	224	ASN	3.4
1	B	224	ASN	3.3
1	C	223	GLY	3.2
1	A	191	ALA	2.6
1	A	433	GLY	2.5
1	D	221	VAL	2.5
1	B	221	VAL	2.4
1	D	222	ASP	2.2
1	C	82	ASP	2.2
1	A	99	GLY	2.1
1	A	434	LEU	2.1

6.2 Non-standard residues in protein, DNA, RNA chains [i](#)

There are no non-standard protein/DNA/RNA residues in this entry.

6.3 Carbohydrates

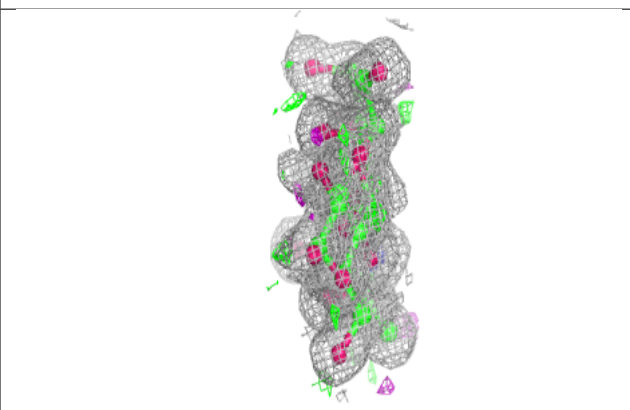
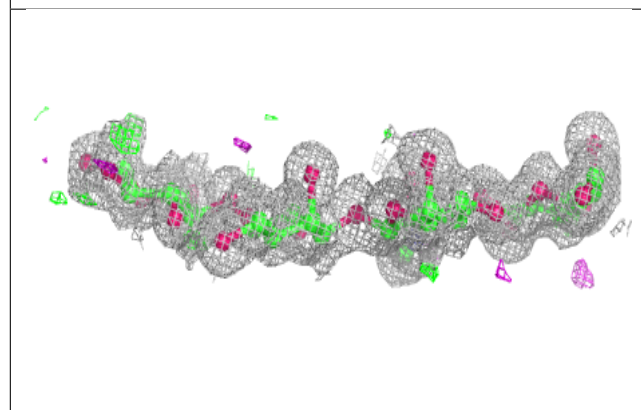
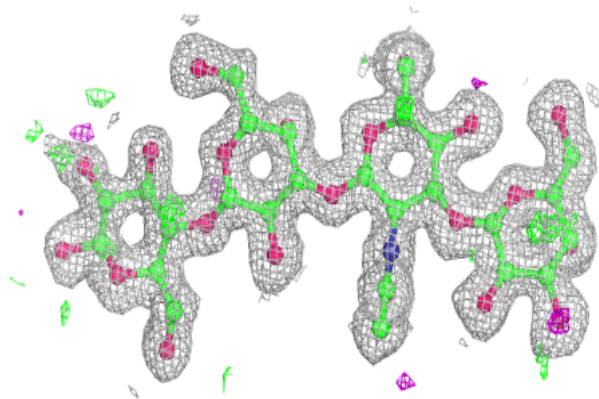
In the following table, the Atoms column lists the number of modelled atoms in the group and the number defined in the chemical component dictionary. The B-factors column lists the minimum, median, 95th percentile and maximum values of B factors of atoms in the group. The column labelled 'Q<0.9' lists the number of atoms with occupancy less than 0.9.

Mol	Type	Chain	Res	Atoms	RSCC	RSR	B-factors(Å ²)	Q<0.9
2	BGC	H	1	12/12	0.89	0.12	9,15,18,22	0
2	BGC	G	1	12/12	0.91	0.10	8,14,17,19	0
2	BGC	F	1	12/12	0.91	0.12	8,13,20,21	0
2	BGC	E	1	12/12	0.92	0.10	8,14,19,21	0
2	GAL	G	2	11/12	0.93	0.09	6,8,11,12	0
2	GAL	H	2	11/12	0.94	0.07	6,8,10,12	0
2	GAL	F	4	11/12	0.96	0.09	4,4,4,4	0
2	GAL	F	2	11/12	0.97	0.07	6,7,9,10	0
2	NAG	G	3	14/15	0.97	0.08	4,4,5,5	0
2	GAL	G	4	11/12	0.97	0.07	4,4,4,5	0
2	GAL	E	4	11/12	0.97	0.08	4,4,4,5	0
2	GAL	E	2	11/12	0.97	0.07	6,8,9,9	0
2	GAL	H	4	11/12	0.97	0.08	4,4,4,5	0
2	NAG	E	3	14/15	0.98	0.07	4,5,5,6	0
2	NAG	H	3	14/15	0.98	0.06	4,5,5,5	0
2	NAG	F	3	14/15	0.98	0.07	5,5,6,6	0

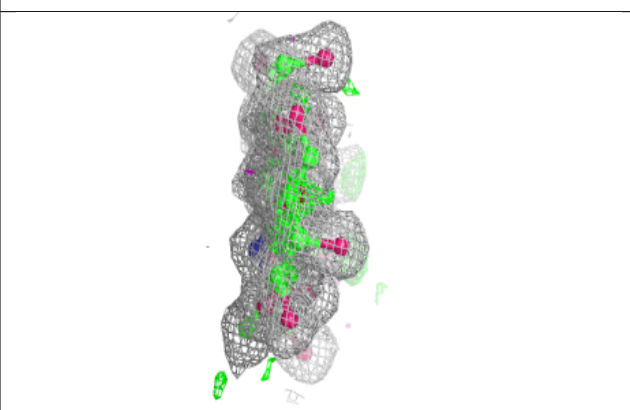
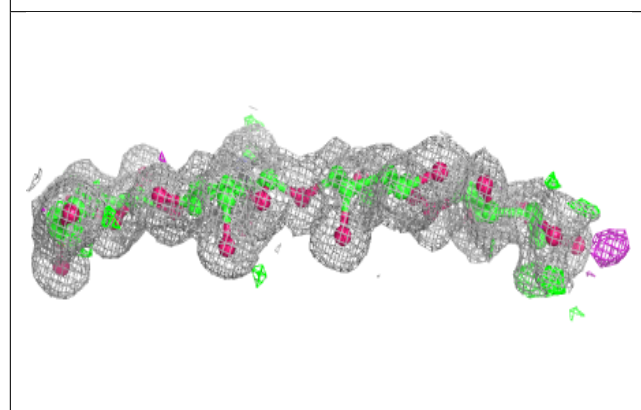
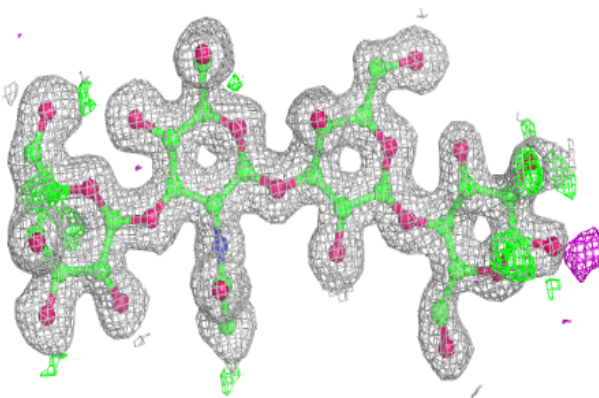
The following is a graphical depiction of the model fit to experimental electron density for oligosaccharide. Each fit is shown from different orientation to approximate a three-dimensional view.

Electron density around Chain E:

$2mF_o-DF_c$ (at 0.7 rmsd) in gray
 mF_o-DF_c (at 3 rmsd) in purple (negative)
and green (positive)

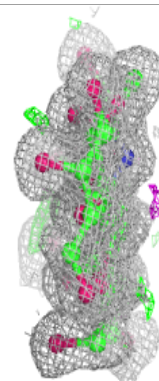
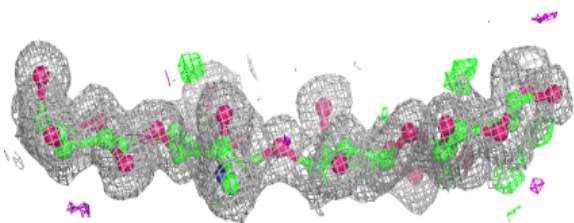
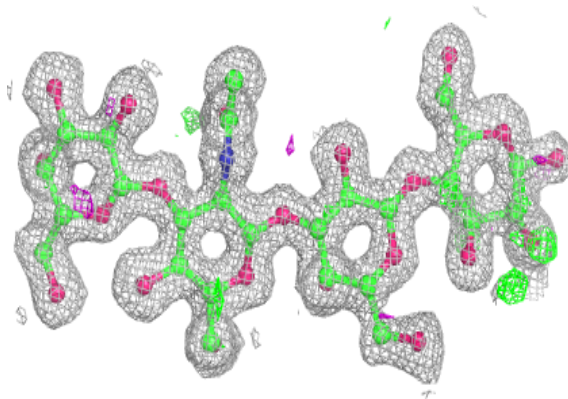
**Electron density around Chain F:**

$2mF_o-DF_c$ (at 0.7 rmsd) in gray
 mF_o-DF_c (at 3 rmsd) in purple (negative)
and green (positive)

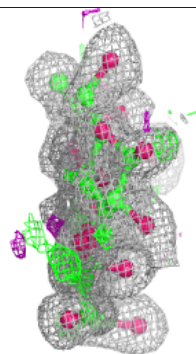
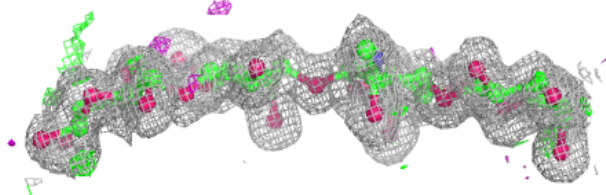
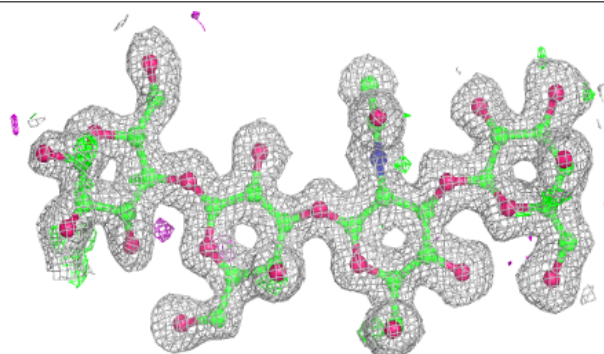


Electron density around Chain G:

$2mF_o-DF_c$ (at 0.7 rmsd) in gray
 mF_o-DF_c (at 3 rmsd) in purple (negative)
and green (positive)

**Electron density around Chain H:**

$2mF_o-DF_c$ (at 0.7 rmsd) in gray
 mF_o-DF_c (at 3 rmsd) in purple (negative)
and green (positive)



6.4 Ligands [i](#)

In the following table, the Atoms column lists the number of modelled atoms in the group and the number defined in the chemical component dictionary. The B-factors column lists the minimum, median, 95th percentile and maximum values of B factors of atoms in the group. The column labelled 'Q< 0.9' lists the number of atoms with occupancy less than 0.9.

Mol	Type	Chain	Res	Atoms	RSCC	RSR	B-factors(Å ²)	Q<0.9
3	SO4	B	502	5/5	0.68	0.22	54,57,61,63	0
3	SO4	B	501	5/5	0.89	0.26	44,47,49,50	0
3	SO4	D	501	5/5	0.93	0.23	33,35,38,40	0
3	SO4	C	501	5/5	0.95	0.15	24,25,26,26	0
3	SO4	A	501	5/5	0.97	0.14	25,26,27,28	0

6.5 Other polymers [i](#)

There are no such residues in this entry.