



Full wwPDB X-ray Structure Validation Report ⓘ

Oct 4, 2023 – 09:53 PM EDT

PDB ID : 6VKV
Title : Co-crystal structure of GS-6207 bound to HIV-1 capsid hexamer
Authors : Bester, S.M.; Kvaratskhelia, M.
Deposited on : 2020-01-22
Resolution : 2.22 Å(reported)

This is a Full wwPDB X-ray Structure Validation Report for a publicly released PDB entry.

We welcome your comments at validation@mail.wwpdb.org

A user guide is available at

<https://www.wwpdb.org/validation/2017/XrayValidationReportHelp>

with specific help available everywhere you see the ⓘ symbol.

The types of validation reports are described at

<http://www.wwpdb.org/validation/2017/FAQs#types>.

The following versions of software and data (see [references ⓘ](#)) were used in the production of this report:

MolProbity : **FAILED**
Mogul : 1.8.5 (274361), CSD as541be (2020)
Xtrriage (Phenix) : 1.13
EDS : **FAILED**
buster-report : 1.1.7 (2018)
Percentile statistics : 20191225.v01 (using entries in the PDB archive December 25th 2019)
Ideal geometry (proteins) : Engh & Huber (2001)
Ideal geometry (DNA, RNA) : Parkinson et al. (1996)
Validation Pipeline (wwPDB-VP) : 2.35.1

1 Overall quality at a glance

The following experimental techniques were used to determine the structure:

X-RAY DIFFRACTION

The reported resolution of this entry is 2.22 Å.

There are no overall percentile quality scores available for this entry.

MolProbity and EDS failed to run properly - the sequence quality summary graphics cannot be shown.

2 Entry composition i

There are 5 unique types of molecules in this entry. The entry contains 5783 atoms, of which 0 are hydrogens and 0 are deuteriums.

In the tables below, the ZeroOcc column contains the number of atoms modelled with zero occupancy, the AltConf column contains the number of residues with at least one atom in alternate conformation and the Trace column contains the number of residues modelled with at most 2 atoms.

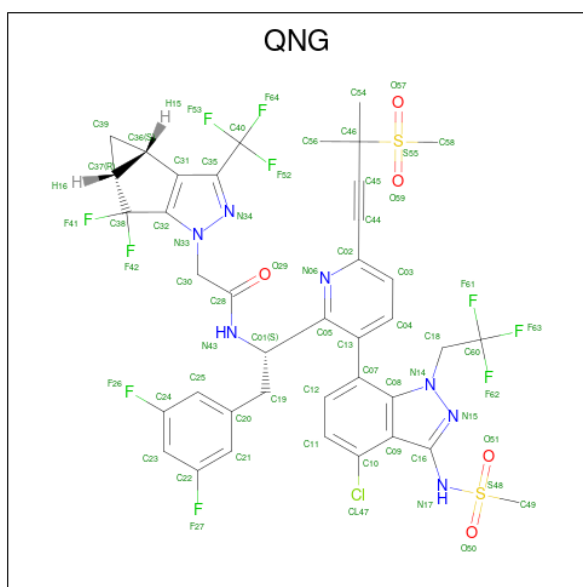
- Molecule 1 is a protein called Capsid protein p24.

Mol	Chain	Residues	Atoms					ZeroOcc	AltConf	Trace
			Total	C	N	O	S			
1	A	220	Total 1715	C 1077	N 303	O 321	S 14	0	1	0
1	B	220	Total 1724	C 1082	N 304	O 324	S 14	0	2	0
1	C	220	Total 1704	C 1071	N 299	O 320	S 14	0	0	0

There are 12 discrepancies between the modelled and reference sequences:

Chain	Residue	Modelled	Actual	Comment	Reference
A	14	CYS	ALA	engineered mutation	UNP B6DRA0
A	45	CYS	GLU	engineered mutation	UNP B6DRA0
A	184	ALA	TRP	engineered mutation	UNP B6DRA0
A	185	ALA	MET	engineered mutation	UNP B6DRA0
B	14	CYS	ALA	engineered mutation	UNP B6DRA0
B	45	CYS	GLU	engineered mutation	UNP B6DRA0
B	184	ALA	TRP	engineered mutation	UNP B6DRA0
B	185	ALA	MET	engineered mutation	UNP B6DRA0
C	14	CYS	ALA	engineered mutation	UNP B6DRA0
C	45	CYS	GLU	engineered mutation	UNP B6DRA0
C	184	ALA	TRP	engineered mutation	UNP B6DRA0
C	185	ALA	MET	engineered mutation	UNP B6DRA0

- Molecule 2 is N-[(1S)-1-(3-{4-chloro-3-[(methylsulfonyl)amino]-1-(2,2,2-trifluoroethyl)-1H-indazol-7-yl}-6-[3-methyl-3-(methylsulfonyl)but-1-yn-1-yl]pyridin-2-yl)-2-(3,5-difluorophenyl)ethyl]-2-[(3bS,4aR)-5,5-difluoro-3-(trifluoromethyl)-3b,4,4a,5-tetrahydro-1H-cyclopropa[3,4]cyclopenta[1,2-c]pyrazol-1-yl]acetamide (three-letter code: QNG) (formula: C₃₉H₃₂ClF₁₀N₇O₅S₂) (labeled as "Ligand of Interest" by depositor).



Mol	Chain	Residues	Atoms						ZeroOcc	AltConf	
			Total	C	Cl	F	N	O			S
2	A	1	Total 128	C 78	Cl 2	F 20	N 14	O 10	S 4	0	1
2	B	1	Total 128	C 78	Cl 2	F 20	N 14	O 10	S 4	0	1
2	C	1	Total 128	C 78	Cl 2	F 20	N 14	O 10	S 4	0	1

- Molecule 3 is IODIDE ION (three-letter code: IOD) (formula: I).

Mol	Chain	Residues	Atoms	ZeroOcc	AltConf
3	A	3	Total 3 I 3	0	0
3	B	1	Total 1 I 1	0	0
3	C	1	Total 1 I 1	0	0

- Molecule 4 is CHLORIDE ION (three-letter code: CL) (formula: Cl).

Mol	Chain	Residues	Atoms	ZeroOcc	AltConf
4	A	4	Total 4 Cl 4	0	0
4	B	4	Total 4 Cl 4	0	0
4	C	6	Total 6 Cl 6	0	0

- Molecule 5 is water.

Mol	Chain	Residues	Atoms		ZeroOcc	AltConf
5	A	73	Total 73	O 73	0	0
5	B	76	Total 76	O 76	0	0
5	C	88	Total 88	O 88	0	0

MolProbity and EDS failed to run properly - this section is therefore empty.

3 Data and refinement statistics i

EDS failed to run properly - this section is therefore incomplete.

Property	Value	Source
Space group	P 6	Depositor
Cell constants a, b, c, α , β , γ	160.05Å 160.05Å 57.53Å 90.00° 90.00° 120.00°	Depositor
Resolution (Å)	44.26 – 2.22	Depositor
% Data completeness (in resolution range)	99.7 (44.26-2.22)	Depositor
R_{merge}	(Not available)	Depositor
R_{sym}	(Not available)	Depositor
$\langle I/\sigma(I) \rangle$ ¹	1.73 (at 2.22Å)	Xtriage
Refinement program	PHENIX 1.10.1_2155	Depositor
R, R_{free}	0.231 , 0.269	Depositor
Wilson B-factor (Å ²)	30.8	Xtriage
Anisotropy	0.087	Xtriage
L-test for twinning ²	$\langle L \rangle = 0.50$, $\langle L^2 \rangle = 0.33$	Xtriage
Estimated twinning fraction	0.029 for h,-h-k,-l	Xtriage
Total number of atoms	5783	wwPDB-VP
Average B, all atoms (Å ²)	40.0	wwPDB-VP

Xtriage's analysis on translational NCS is as follows: *The analyses of the Patterson function reveals a significant off-origin peak that is 32.78 % of the origin peak, indicating pseudo-translational symmetry. The chance of finding a peak of this or larger height randomly in a structure without pseudo-translational symmetry is equal to 8.8967e-04. The detected translational NCS is most likely also responsible for the elevated intensity ratio.*

¹Intensities estimated from amplitudes.

²Theoretical values of $\langle |L| \rangle$, $\langle L^2 \rangle$ for acentric reflections are 0.5, 0.333 respectively for untwinned datasets, and 0.375, 0.2 for perfectly twinned datasets.

4 Model quality [i](#)

4.1 Standard geometry [i](#)

MolProbity failed to run properly - this section is therefore empty.

4.2 Too-close contacts [i](#)

MolProbity failed to run properly - this section is therefore empty.

4.3 Torsion angles [i](#)

4.3.1 Protein backbone [i](#)

MolProbity failed to run properly - this section is therefore empty.

4.3.2 Protein sidechains [i](#)

MolProbity failed to run properly - this section is therefore empty.

4.3.3 RNA [i](#)

MolProbity failed to run properly - this section is therefore empty.

4.4 Non-standard residues in protein, DNA, RNA chains [i](#)

There are no non-standard protein/DNA/RNA residues in this entry.

4.5 Carbohydrates [i](#)

There are no monosaccharides in this entry.

4.6 Ligand geometry [i](#)

Of 25 ligands modelled in this entry, 19 are monoatomic - leaving 6 for Mogul analysis.

In the following table, the Counts columns list the number of bonds (or angles) for which Mogul statistics could be retrieved, the number of bonds (or angles) that are observed in the model and the number of bonds (or angles) that are defined in the Chemical Component Dictionary. The Link column lists molecule types, if any, to which the group is linked. The Z score for a bond

length (or angle) is the number of standard deviations the observed value is removed from the expected value. A bond length (or angle) with $|Z| > 2$ is considered an outlier worth inspection. RMSZ is the root-mean-square of all Z scores of the bond lengths (or angles).

Mol	Type	Chain	Res	Link	Bond lengths			Bond angles		
					Counts	RMSZ	# Z > 2	Counts	RMSZ	# Z > 2
2	QNG	A	301[B]	-	60,70,70	2.66	19 (31%)	80,114,114	3.46	28 (35%)
2	QNG	C	301[B]	-	60,70,70	2.51	20 (33%)	80,114,114	3.18	29 (36%)
2	QNG	B	301[A]	-	60,70,70	2.56	20 (33%)	80,114,114	3.57	28 (35%)
2	QNG	B	301[B]	-	60,70,70	2.54	21 (35%)	80,114,114	3.37	23 (28%)
2	QNG	A	301[A]	-	60,70,70	2.60	19 (31%)	80,114,114	3.37	23 (28%)
2	QNG	C	301[A]	-	60,70,70	2.61	19 (31%)	80,114,114	3.44	25 (31%)

In the following table, the Chirals column lists the number of chiral outliers, the number of chiral centers analysed, the number of these observed in the model and the number defined in the Chemical Component Dictionary. Similar counts are reported in the Torsion and Rings columns. '-' means no outliers of that kind were identified.

Mol	Type	Chain	Res	Link	Chirals	Torsions	Rings
2	QNG	A	301[B]	-	-	2/41/72/72	0/7/7/7
2	QNG	C	301[B]	-	-	1/41/72/72	0/7/7/7
2	QNG	B	301[A]	-	-	13/41/72/72	0/7/7/7
2	QNG	B	301[B]	-	-	5/41/72/72	0/7/7/7
2	QNG	A	301[A]	-	-	7/41/72/72	0/7/7/7
2	QNG	C	301[A]	-	-	11/41/72/72	0/7/7/7

All (118) bond length outliers are listed below:

Mol	Chain	Res	Type	Atoms	Z	Observed(Å)	Ideal(Å)
2	B	301[A]	QNG	C28-N43	7.06	1.49	1.34
2	B	301[B]	QNG	C28-N43	7.05	1.49	1.34
2	A	301[A]	QNG	S48-N17	6.92	1.72	1.63
2	C	301[A]	QNG	C28-N43	6.90	1.48	1.34
2	A	301[B]	QNG	C28-N43	6.84	1.48	1.34
2	A	301[B]	QNG	S48-N17	6.83	1.72	1.63
2	C	301[A]	QNG	S48-N17	6.76	1.72	1.63
2	A	301[A]	QNG	C28-N43	6.67	1.48	1.34
2	C	301[A]	QNG	C02-C44	6.43	1.55	1.44
2	A	301[B]	QNG	C02-C44	6.40	1.55	1.44
2	C	301[B]	QNG	S48-N17	6.25	1.71	1.63
2	C	301[B]	QNG	C28-N43	6.21	1.47	1.34
2	B	301[B]	QNG	S48-N17	6.20	1.71	1.63

Continued on next page...

Continued from previous page...

Mol	Chain	Res	Type	Atoms	Z	Observed(Å)	Ideal(Å)
2	A	301[A]	QNG	C02-C44	6.18	1.54	1.44
2	B	301[A]	QNG	C58-S55	6.14	1.83	1.76
2	C	301[B]	QNG	C02-C44	6.11	1.54	1.44
2	B	301[A]	QNG	S48-N17	6.11	1.71	1.63
2	A	301[B]	QNG	C58-S55	6.10	1.83	1.76
2	C	301[A]	QNG	C46-C45	6.05	1.55	1.46
2	B	301[A]	QNG	C02-C44	5.96	1.54	1.44
2	B	301[B]	QNG	C58-S55	5.92	1.83	1.76
2	A	301[B]	QNG	C46-C45	5.72	1.55	1.46
2	B	301[B]	QNG	C02-C44	5.72	1.53	1.44
2	C	301[B]	QNG	C46-C45	5.69	1.55	1.46
2	A	301[A]	QNG	C58-S55	5.67	1.83	1.76
2	C	301[A]	QNG	C58-S55	5.65	1.83	1.76
2	B	301[A]	QNG	C46-C45	5.51	1.54	1.46
2	C	301[B]	QNG	C58-S55	5.46	1.83	1.76
2	A	301[A]	QNG	C46-C45	5.44	1.54	1.46
2	A	301[A]	QNG	C38-C32	5.15	1.55	1.49
2	B	301[B]	QNG	C46-C45	5.10	1.54	1.46
2	A	301[B]	QNG	C38-C32	5.02	1.55	1.49
2	C	301[A]	QNG	C38-C32	4.89	1.55	1.49
2	B	301[A]	QNG	C38-C32	4.88	1.55	1.49
2	A	301[B]	QNG	C07-C13	4.84	1.57	1.50
2	B	301[B]	QNG	C38-C32	4.82	1.55	1.49
2	C	301[B]	QNG	C38-C32	4.76	1.55	1.49
2	A	301[A]	QNG	C07-C13	4.75	1.56	1.50
2	C	301[A]	QNG	C07-C13	4.66	1.56	1.50
2	B	301[A]	QNG	O59-S55	4.52	1.47	1.44
2	A	301[B]	QNG	O57-S55	4.47	1.47	1.44
2	C	301[B]	QNG	O59-S55	4.47	1.47	1.44
2	A	301[B]	QNG	O59-S55	4.43	1.47	1.44
2	A	301[A]	QNG	O59-S55	4.36	1.47	1.44
2	C	301[B]	QNG	C07-C13	4.29	1.56	1.50
2	B	301[B]	QNG	C07-C13	4.26	1.56	1.50
2	C	301[A]	QNG	O59-S55	4.26	1.47	1.44
2	B	301[A]	QNG	O57-S55	4.22	1.47	1.44
2	B	301[B]	QNG	O59-S55	4.18	1.47	1.44
2	A	301[A]	QNG	O57-S55	4.08	1.47	1.44
2	B	301[B]	QNG	O57-S55	3.98	1.47	1.44
2	B	301[A]	QNG	C07-C13	3.94	1.55	1.50
2	C	301[A]	QNG	O57-S55	3.89	1.46	1.44
2	C	301[B]	QNG	O57-S55	3.85	1.46	1.44
2	C	301[B]	QNG	C09-C08	-3.61	1.38	1.42

Continued on next page...

Continued from previous page...

Mol	Chain	Res	Type	Atoms	Z	Observed(Å)	Ideal(Å)
2	A	301[A]	QNG	C16-N17	3.57	1.47	1.39
2	C	301[A]	QNG	C16-N17	3.54	1.47	1.39
2	A	301[B]	QNG	C16-N17	3.48	1.47	1.39
2	B	301[B]	QNG	C35-N34	3.48	1.38	1.34
2	C	301[A]	QNG	C35-N34	3.44	1.38	1.34
2	B	301[A]	QNG	C35-N34	3.42	1.38	1.34
2	C	301[A]	QNG	C49-S48	3.41	1.83	1.75
2	A	301[B]	QNG	C49-S48	3.40	1.83	1.75
2	B	301[A]	QNG	C49-S48	3.40	1.83	1.75
2	A	301[A]	QNG	C49-S48	3.39	1.83	1.75
2	C	301[B]	QNG	C49-S48	3.39	1.83	1.75
2	B	301[B]	QNG	C49-S48	3.37	1.83	1.75
2	A	301[B]	QNG	C18-C60	3.26	1.54	1.50
2	B	301[B]	QNG	C18-C60	3.25	1.54	1.50
2	B	301[A]	QNG	C18-C60	3.21	1.54	1.50
2	B	301[A]	QNG	C16-N17	3.20	1.46	1.39
2	A	301[A]	QNG	C18-C60	3.19	1.54	1.50
2	B	301[B]	QNG	C16-N17	3.18	1.46	1.39
2	B	301[B]	QNG	C09-C08	-3.17	1.38	1.42
2	C	301[B]	QNG	C16-N17	3.08	1.46	1.39
2	A	301[B]	QNG	C35-N34	3.01	1.38	1.34
2	C	301[B]	QNG	C35-N34	3.00	1.38	1.34
2	C	301[A]	QNG	C18-C60	3.00	1.54	1.50
2	A	301[A]	QNG	C31-C36	2.99	1.57	1.51
2	C	301[B]	QNG	C32-N33	-2.97	1.33	1.37
2	A	301[B]	QNG	C31-C36	2.95	1.57	1.51
2	C	301[A]	QNG	C31-C36	2.94	1.57	1.51
2	B	301[A]	QNG	C09-C08	-2.93	1.39	1.42
2	B	301[B]	QNG	C31-C36	2.92	1.57	1.51
2	A	301[A]	QNG	C09-C08	-2.91	1.39	1.42
2	C	301[B]	QNG	C31-C36	2.88	1.57	1.51
2	B	301[A]	QNG	C31-C36	2.85	1.57	1.51
2	C	301[A]	QNG	C09-C08	-2.75	1.39	1.42
2	B	301[B]	QNG	C32-N33	-2.74	1.33	1.37
2	A	301[B]	QNG	C09-C08	-2.72	1.39	1.42
2	A	301[A]	QNG	C35-N34	2.72	1.37	1.34
2	A	301[A]	QNG	C32-N33	-2.59	1.33	1.37
2	B	301[A]	QNG	C32-N33	-2.59	1.33	1.37
2	A	301[B]	QNG	C32-N33	-2.54	1.33	1.37
2	C	301[A]	QNG	C32-N33	-2.51	1.33	1.37
2	B	301[B]	QNG	O51-S48	2.26	1.47	1.43
2	A	301[B]	QNG	O50-S48	2.25	1.47	1.43

Continued on next page...

Continued from previous page...

Mol	Chain	Res	Type	Atoms	Z	Observed(Å)	Ideal(Å)
2	B	301[A]	QNG	O51-S48	2.25	1.47	1.43
2	A	301[A]	QNG	O50-S48	2.20	1.47	1.43
2	C	301[B]	QNG	O50-S48	2.20	1.47	1.43
2	C	301[B]	QNG	C18-C60	2.20	1.53	1.50
2	A	301[B]	QNG	C11-C10	2.14	1.41	1.36
2	B	301[B]	QNG	O50-S48	2.14	1.47	1.43
2	C	301[A]	QNG	O51-S48	2.14	1.47	1.43
2	A	301[B]	QNG	O51-S48	2.12	1.47	1.43
2	C	301[B]	QNG	O51-S48	2.12	1.47	1.43
2	A	301[A]	QNG	O51-S48	2.11	1.47	1.43
2	C	301[B]	QNG	O29-C28	-2.11	1.19	1.23
2	B	301[B]	QNG	C11-C10	2.10	1.41	1.36
2	C	301[A]	QNG	O29-C28	-2.10	1.19	1.23
2	C	301[B]	QNG	C11-C10	2.10	1.41	1.36
2	B	301[A]	QNG	O50-S48	2.08	1.47	1.43
2	C	301[A]	QNG	C11-C10	2.06	1.41	1.36
2	B	301[B]	QNG	O29-C28	-2.05	1.19	1.23
2	A	301[A]	QNG	C11-C10	2.05	1.41	1.36
2	B	301[A]	QNG	O29-C28	-2.04	1.19	1.23
2	B	301[A]	QNG	C39-C37	2.01	1.53	1.50
2	B	301[B]	QNG	C39-C37	2.00	1.53	1.50

All (156) bond angle outliers are listed below:

Mol	Chain	Res	Type	Atoms	Z	Observed(°)	Ideal(°)
2	A	301[B]	QNG	O59-S55-O57	-20.56	101.01	118.10
2	C	301[A]	QNG	O59-S55-O57	-19.81	101.63	118.10
2	B	301[A]	QNG	O59-S55-O57	-19.73	101.69	118.10
2	A	301[A]	QNG	O59-S55-O57	-19.48	101.91	118.10
2	B	301[B]	QNG	O59-S55-O57	-19.10	102.22	118.10
2	C	301[B]	QNG	O59-S55-O57	-18.37	102.82	118.10
2	C	301[A]	QNG	O51-S48-O50	-12.59	100.75	118.85
2	A	301[A]	QNG	O51-S48-O50	-12.25	101.24	118.85
2	B	301[A]	QNG	O51-S48-O50	-12.22	101.28	118.85
2	A	301[B]	QNG	O51-S48-O50	-12.14	101.40	118.85
2	B	301[B]	QNG	O51-S48-O50	-12.03	101.55	118.85
2	C	301[B]	QNG	O51-S48-O50	-10.43	103.86	118.85
2	A	301[A]	QNG	C39-C36-C31	9.64	128.58	115.70
2	B	301[A]	QNG	C39-C36-C31	9.58	128.50	115.70
2	B	301[B]	QNG	C39-C36-C31	9.41	128.28	115.70
2	A	301[B]	QNG	C39-C36-C31	9.33	128.18	115.70
2	C	301[A]	QNG	C39-C36-C31	9.30	128.14	115.70

Continued on next page...

Continued from previous page...

Mol	Chain	Res	Type	Atoms	Z	Observed(°)	Ideal(°)
2	B	301[A]	QNG	C40-C35-C31	-8.62	124.12	129.48
2	C	301[B]	QNG	C39-C36-C31	8.30	126.80	115.70
2	B	301[A]	QNG	C40-C35-N34	7.29	128.40	119.69
2	A	301[B]	QNG	C02-N06-C05	7.14	122.22	117.22
2	B	301[B]	QNG	C40-C35-C31	-6.45	125.47	129.48
2	A	301[A]	QNG	C02-N06-C05	6.39	121.69	117.22
2	C	301[A]	QNG	C40-C35-C31	-6.21	125.62	129.48
2	C	301[A]	QNG	C02-N06-C05	6.16	121.53	117.22
2	B	301[B]	QNG	C40-C35-N34	6.10	126.98	119.69
2	B	301[A]	QNG	C02-N06-C05	6.00	121.42	117.22
2	C	301[A]	QNG	C40-C35-N34	5.97	126.83	119.69
2	B	301[B]	QNG	C02-N06-C05	5.10	120.79	117.22
2	A	301[A]	QNG	C40-C35-N34	5.00	125.67	119.69
2	A	301[B]	QNG	C40-C35-N34	4.88	125.52	119.69
2	C	301[B]	QNG	C40-C35-C31	-4.81	126.49	129.48
2	C	301[B]	QNG	C40-C35-N34	4.79	125.41	119.69
2	C	301[B]	QNG	C02-N06-C05	4.62	120.45	117.22
2	A	301[A]	QNG	C40-C35-C31	-4.34	126.78	129.48
2	C	301[B]	QNG	C49-S48-N17	4.02	111.21	106.63
2	A	301[B]	QNG	C40-C35-C31	-4.01	126.99	129.48
2	A	301[A]	QNG	C49-S48-N17	3.79	110.96	106.63
2	B	301[A]	QNG	F41-C38-C32	-3.75	107.30	112.81
2	A	301[B]	QNG	C54-C46-C45	-3.65	106.59	109.96
2	B	301[B]	QNG	C16-N17-S48	-3.62	117.70	124.17
2	B	301[A]	QNG	C18-N14-N15	3.49	123.63	117.08
2	B	301[B]	QNG	F41-C38-C32	-3.49	107.69	112.81
2	C	301[B]	QNG	C18-N14-N15	3.45	123.56	117.08
2	C	301[B]	QNG	C13-C05-C01	-3.39	118.36	122.91
2	C	301[A]	QNG	C18-N14-N15	3.33	123.33	117.08
2	A	301[A]	QNG	C18-N14-N15	3.30	123.26	117.08
2	B	301[B]	QNG	C18-N14-N15	3.28	123.22	117.08
2	B	301[B]	QNG	C49-S48-N17	3.25	110.33	106.63
2	B	301[A]	QNG	C16-N17-S48	-3.21	118.44	124.17
2	C	301[B]	QNG	C16-N17-S48	-3.12	118.60	124.17
2	C	301[B]	QNG	F61-C60-C18	-3.11	107.03	112.12
2	A	301[A]	QNG	F41-C38-C32	-3.11	108.24	112.81
2	A	301[B]	QNG	C18-N14-N15	3.10	122.89	117.08
2	B	301[A]	QNG	C32-C31-C35	3.06	107.73	104.23
2	C	301[B]	QNG	C01-N43-C28	-3.05	118.47	123.33
2	A	301[A]	QNG	F52-C40-C35	-2.99	107.64	112.32
2	B	301[B]	QNG	C19-C01-C05	-2.99	105.72	110.64
2	C	301[A]	QNG	F41-C38-C32	-2.98	108.44	112.81

Continued on next page...

Continued from previous page...

Mol	Chain	Res	Type	Atoms	Z	Observed(°)	Ideal(°)
2	A	301[A]	QNG	C13-C05-C01	-2.94	118.97	122.91
2	C	301[B]	QNG	F41-C38-C32	-2.90	108.55	112.81
2	B	301[B]	QNG	C32-C31-C35	2.89	107.54	104.23
2	A	301[A]	QNG	O57-S55-C58	2.89	112.22	108.44
2	C	301[A]	QNG	C32-C31-C35	2.87	107.52	104.23
2	B	301[B]	QNG	C23-C22-C21	-2.85	119.92	123.52
2	B	301[A]	QNG	C23-C22-C21	-2.85	119.92	123.52
2	B	301[A]	QNG	C49-S48-N17	2.84	109.87	106.63
2	B	301[B]	QNG	O59-S55-C58	2.83	112.15	108.44
2	B	301[B]	QNG	C30-N33-N34	2.81	125.66	117.77
2	A	301[A]	QNG	C32-C31-C35	2.78	107.41	104.23
2	A	301[B]	QNG	C32-C31-C35	2.75	107.37	104.23
2	A	301[B]	QNG	C23-C22-C21	-2.74	120.05	123.52
2	A	301[B]	QNG	C49-S48-N17	2.74	109.76	106.63
2	B	301[A]	QNG	F53-C40-C35	-2.74	108.03	112.32
2	B	301[A]	QNG	C25-C24-C23	-2.73	120.07	123.52
2	B	301[B]	QNG	C25-C24-C23	-2.70	120.11	123.52
2	A	301[A]	QNG	C23-C22-C21	-2.69	120.11	123.52
2	B	301[A]	QNG	C13-C05-C01	-2.68	119.31	122.91
2	A	301[B]	QNG	C25-C24-C23	-2.66	120.15	123.52
2	B	301[A]	QNG	C19-C01-C05	-2.65	106.27	110.64
2	B	301[A]	QNG	C30-N33-N34	2.65	125.22	117.77
2	A	301[B]	QNG	F41-C38-C32	-2.63	108.95	112.81
2	B	301[A]	QNG	C24-C23-C22	2.62	120.20	116.13
2	C	301[A]	QNG	C25-C24-C23	-2.60	120.23	123.52
2	C	301[A]	QNG	C03-C02-N06	-2.60	120.28	123.27
2	C	301[A]	QNG	C23-C22-C21	-2.60	120.23	123.52
2	B	301[B]	QNG	C24-C23-C22	2.58	120.14	116.13
2	C	301[B]	QNG	C09-C10-CL47	-2.58	116.64	122.81
2	A	301[A]	QNG	C25-C24-C23	-2.57	120.27	123.52
2	B	301[B]	QNG	O51-S48-C49	2.57	112.40	108.28
2	C	301[A]	QNG	C30-N33-N34	2.55	124.95	117.77
2	C	301[B]	QNG	C30-N33-N34	2.54	124.91	117.77
2	A	301[A]	QNG	F61-C60-C18	-2.54	107.98	112.12
2	B	301[A]	QNG	O51-S48-C49	2.53	112.34	108.28
2	B	301[A]	QNG	C13-C07-C08	2.53	123.99	121.14
2	B	301[A]	QNG	C12-C07-C08	2.53	121.09	117.47
2	A	301[B]	QNG	C07-C13-C05	-2.52	117.96	122.73
2	C	301[B]	QNG	F53-C40-C35	-2.52	108.38	112.32
2	C	301[A]	QNG	C13-C05-C01	-2.51	119.54	122.91
2	A	301[B]	QNG	C04-C13-C07	2.51	123.34	119.27
2	A	301[A]	QNG	C24-C23-C22	2.50	120.02	116.13

Continued on next page...

Continued from previous page...

Mol	Chain	Res	Type	Atoms	Z	Observed(°)	Ideal(°)
2	A	301[B]	QNG	C24-C23-C22	2.49	120.01	116.13
2	A	301[B]	QNG	O57-S55-C58	2.49	111.70	108.44
2	C	301[B]	QNG	C23-C22-C21	-2.49	120.38	123.52
2	B	301[B]	QNG	C13-C05-C01	-2.45	119.63	122.91
2	A	301[B]	QNG	O59-S55-C58	2.44	111.64	108.44
2	A	301[A]	QNG	C07-C13-C05	-2.44	118.12	122.73
2	C	301[B]	QNG	C32-C31-C35	2.43	107.01	104.23
2	A	301[B]	QNG	C03-C02-N06	-2.43	120.49	123.27
2	C	301[B]	QNG	F42-C38-C32	-2.41	109.27	112.81
2	C	301[A]	QNG	C19-C01-C05	-2.40	106.68	110.64
2	A	301[B]	QNG	C13-C05-C01	-2.40	119.69	122.91
2	C	301[B]	QNG	C19-C01-C05	-2.40	106.69	110.64
2	C	301[A]	QNG	C49-S48-N17	2.39	109.36	106.63
2	A	301[B]	QNG	C03-C02-C44	2.39	123.99	120.34
2	C	301[B]	QNG	C25-C24-C23	-2.37	120.52	123.52
2	C	301[B]	QNG	C12-C11-C10	-2.37	118.02	120.89
2	C	301[A]	QNG	C24-C23-C22	2.37	119.82	116.13
2	C	301[A]	QNG	O50-S48-C49	2.36	112.07	108.28
2	C	301[B]	QNG	O50-S48-C49	2.36	112.06	108.28
2	B	301[B]	QNG	C12-C07-C08	2.34	120.82	117.47
2	A	301[B]	QNG	F64-C40-C35	-2.33	108.68	112.32
2	C	301[A]	QNG	C30-C28-N43	2.33	120.66	115.26
2	B	301[A]	QNG	C54-C46-C45	-2.32	107.82	109.96
2	B	301[B]	QNG	C30-C28-N43	2.31	120.62	115.26
2	C	301[A]	QNG	O57-S55-C58	2.31	111.47	108.44
2	B	301[A]	QNG	O59-S55-C58	2.31	111.46	108.44
2	C	301[A]	QNG	O50-S48-N17	2.30	111.79	107.10
2	C	301[A]	QNG	O59-S55-C58	2.30	111.45	108.44
2	B	301[A]	QNG	O57-S55-C58	2.29	111.44	108.44
2	A	301[A]	QNG	C04-C13-C07	2.28	122.97	119.27
2	B	301[A]	QNG	C12-C07-C13	-2.26	114.92	119.12
2	A	301[B]	QNG	C16-N17-S48	-2.26	120.14	124.17
2	B	301[A]	QNG	C30-C28-N43	2.23	120.44	115.26
2	A	301[A]	QNG	O50-S48-N17	2.23	111.64	107.10
2	A	301[B]	QNG	O50-S48-C49	2.22	111.84	108.28
2	B	301[A]	QNG	O50-S48-C49	2.21	111.83	108.28
2	C	301[B]	QNG	C24-C23-C22	2.20	119.56	116.13
2	A	301[A]	QNG	C01-N43-C28	-2.19	119.84	123.33
2	C	301[A]	QNG	O29-C28-N43	-2.19	119.26	122.95
2	C	301[A]	QNG	C01-N43-C28	-2.16	119.88	123.33
2	C	301[B]	QNG	C07-C13-C05	-2.15	118.66	122.73
2	A	301[A]	QNG	C09-C10-CL47	-2.15	117.66	122.81

Continued on next page...

Continued from previous page...

Mol	Chain	Res	Type	Atoms	Z	Observed(°)	Ideal(°)
2	A	301[B]	QNG	C30-N33-N34	2.13	123.77	117.77
2	B	301[B]	QNG	F53-C40-C35	-2.12	109.01	112.32
2	C	301[A]	QNG	O51-S48-C49	2.10	111.65	108.28
2	A	301[B]	QNG	F63-C60-C18	-2.08	108.72	112.12
2	A	301[B]	QNG	C01-N43-C28	-2.08	120.01	123.33
2	C	301[B]	QNG	C12-C07-C08	2.07	120.44	117.47
2	C	301[B]	QNG	O29-C28-N43	-2.06	119.47	122.95
2	A	301[B]	QNG	O50-S48-N17	2.06	111.30	107.10
2	A	301[A]	QNG	C03-C02-N06	-2.05	120.92	123.27
2	B	301[B]	QNG	F27-C22-C23	2.04	121.17	118.25
2	C	301[B]	QNG	C03-C02-N06	-2.02	120.95	123.27
2	B	301[A]	QNG	F27-C22-C23	2.02	121.14	118.25
2	C	301[B]	QNG	F64-C40-C35	-2.01	109.18	112.32

There are no chirality outliers.

All (39) torsion outliers are listed below:

Mol	Chain	Res	Type	Atoms
2	A	301[B]	QNG	C45-C46-S55-O59
2	B	301[A]	QNG	C02-C44-C45-C46
2	B	301[A]	QNG	C45-C46-S55-O57
2	B	301[A]	QNG	C45-C46-S55-O59
2	B	301[A]	QNG	C54-C46-S55-O57
2	B	301[A]	QNG	C54-C46-S55-O59
2	B	301[A]	QNG	C56-C46-S55-O57
2	B	301[A]	QNG	C56-C46-S55-O59
2	B	301[B]	QNG	N14-C18-C60-F61
2	B	301[B]	QNG	N14-C18-C60-F62
2	B	301[B]	QNG	N14-C18-C60-F63
2	C	301[A]	QNG	C02-C44-C45-C46
2	C	301[A]	QNG	C45-C46-S55-O57
2	C	301[A]	QNG	C45-C46-S55-O59
2	C	301[A]	QNG	C54-C46-S55-O59
2	C	301[A]	QNG	C56-C46-S55-O57
2	C	301[A]	QNG	C56-C46-S55-O59
2	A	301[A]	QNG	C16-N17-S48-O51
2	A	301[A]	QNG	C02-C44-C45-C46
2	B	301[B]	QNG	C02-C44-C45-C46
2	C	301[B]	QNG	C02-C44-C45-C46
2	C	301[A]	QNG	C54-C46-S55-O57
2	A	301[A]	QNG	C16-N17-S48-O50
2	C	301[A]	QNG	C16-N17-S48-O51

Continued on next page...

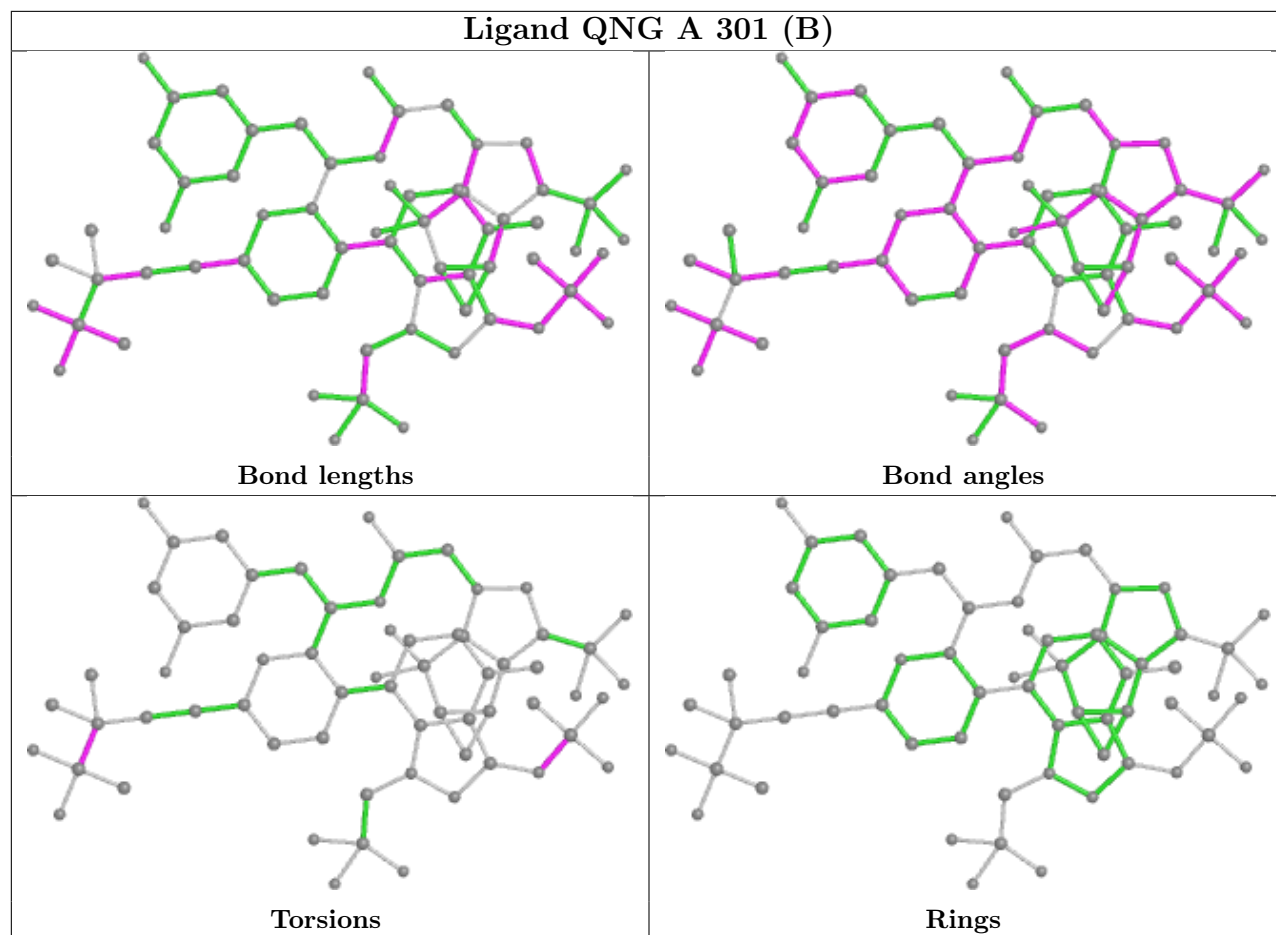
Continued from previous page...

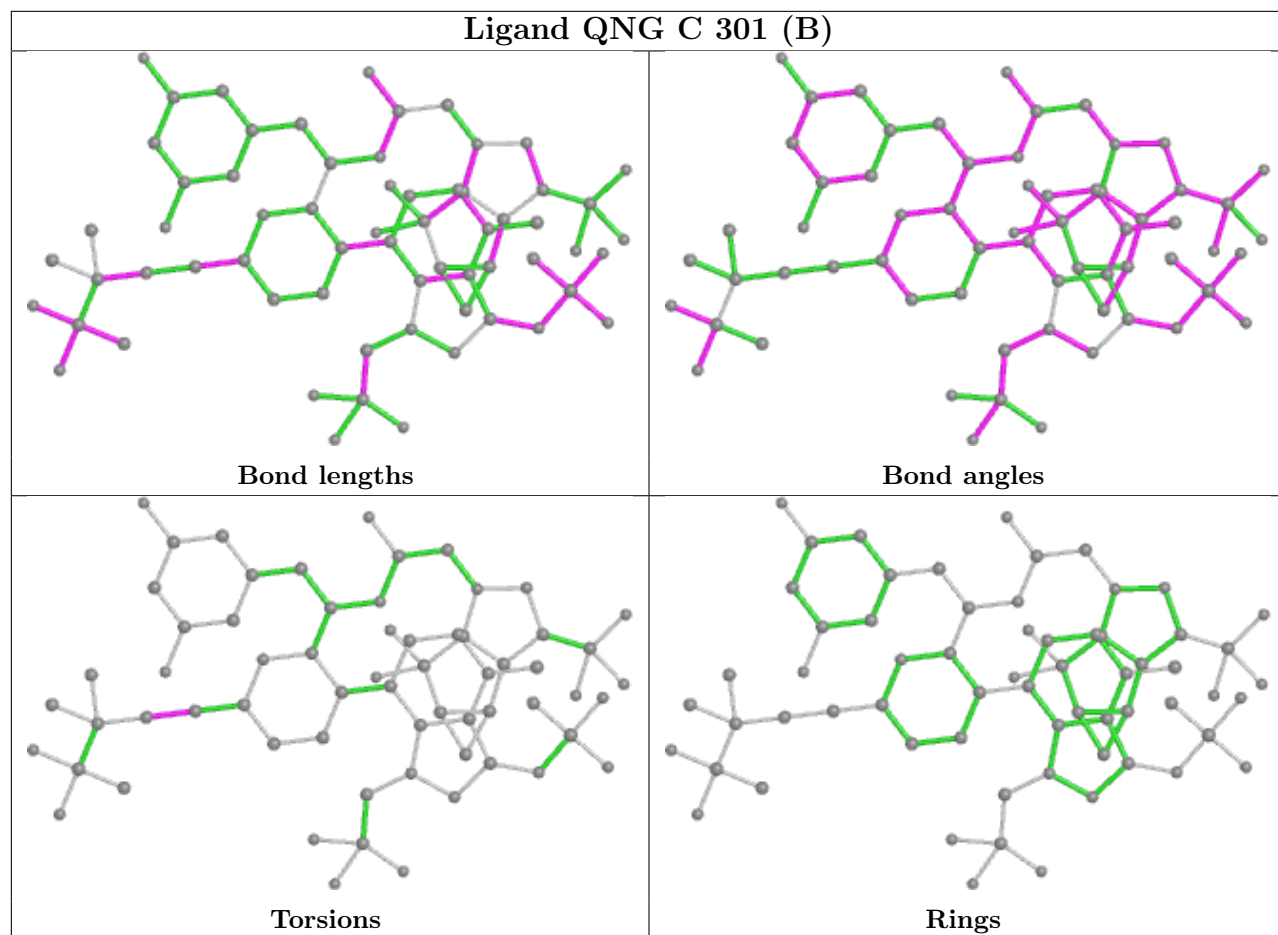
Mol	Chain	Res	Type	Atoms
2	A	301[A]	QNG	N34-C35-C40-F52
2	B	301[A]	QNG	N34-C35-C40-F53
2	A	301[B]	QNG	C16-N17-S48-O51
2	B	301[A]	QNG	C16-N17-S48-O51
2	A	301[A]	QNG	N34-C35-C40-F53
2	A	301[A]	QNG	N34-C35-C40-F64
2	B	301[A]	QNG	N34-C35-C40-F64
2	B	301[A]	QNG	C28-C30-N33-C32
2	B	301[B]	QNG	C28-C30-N33-C32
2	C	301[A]	QNG	C28-C30-N33-C32
2	B	301[A]	QNG	N34-C35-C40-F52
2	A	301[A]	QNG	C16-N17-S48-C49
2	C	301[A]	QNG	C16-N17-S48-C49
2	B	301[A]	QNG	N06-C02-C44-C45
2	C	301[A]	QNG	C28-C30-N33-N34

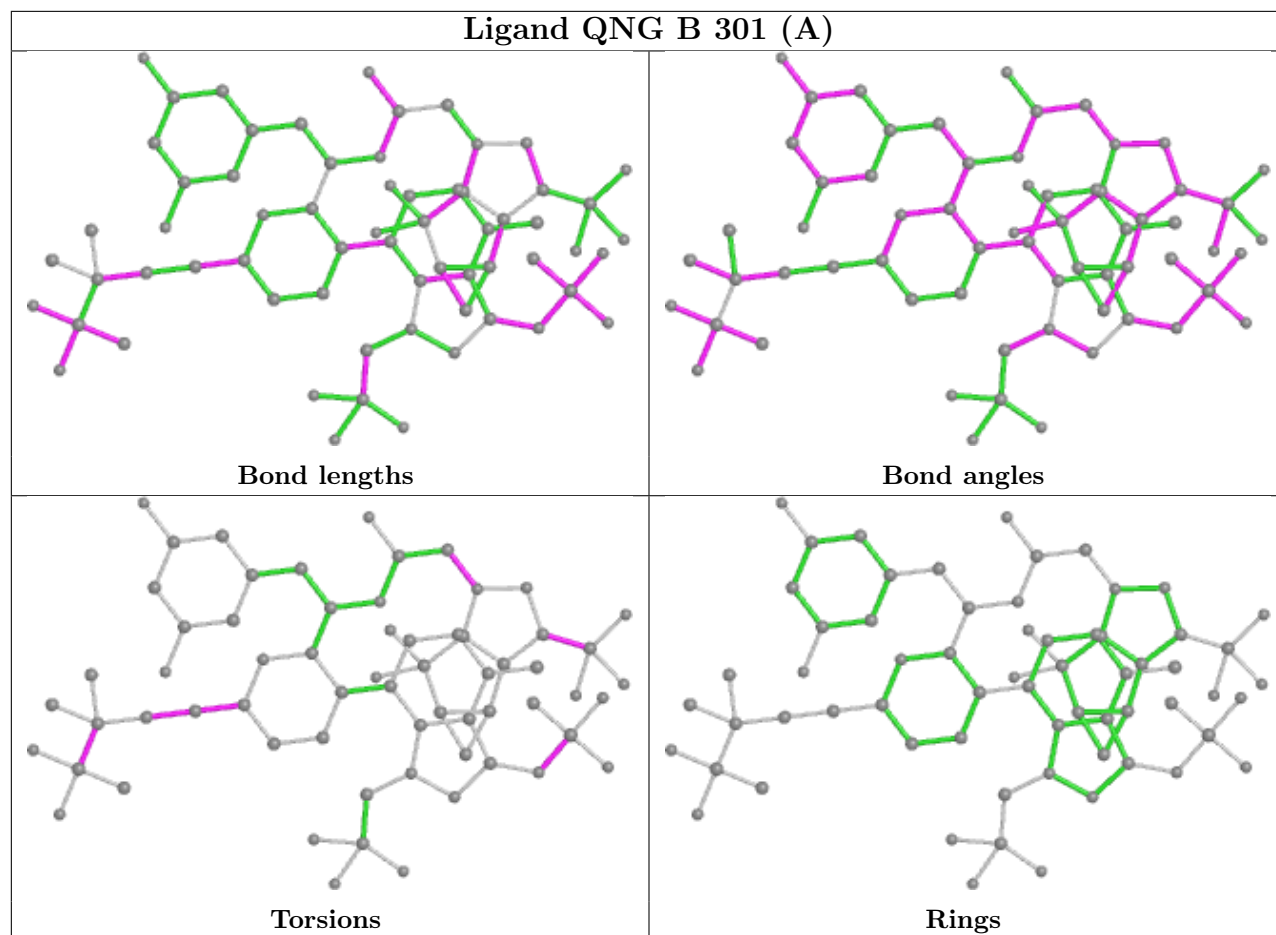
There are no ring outliers.

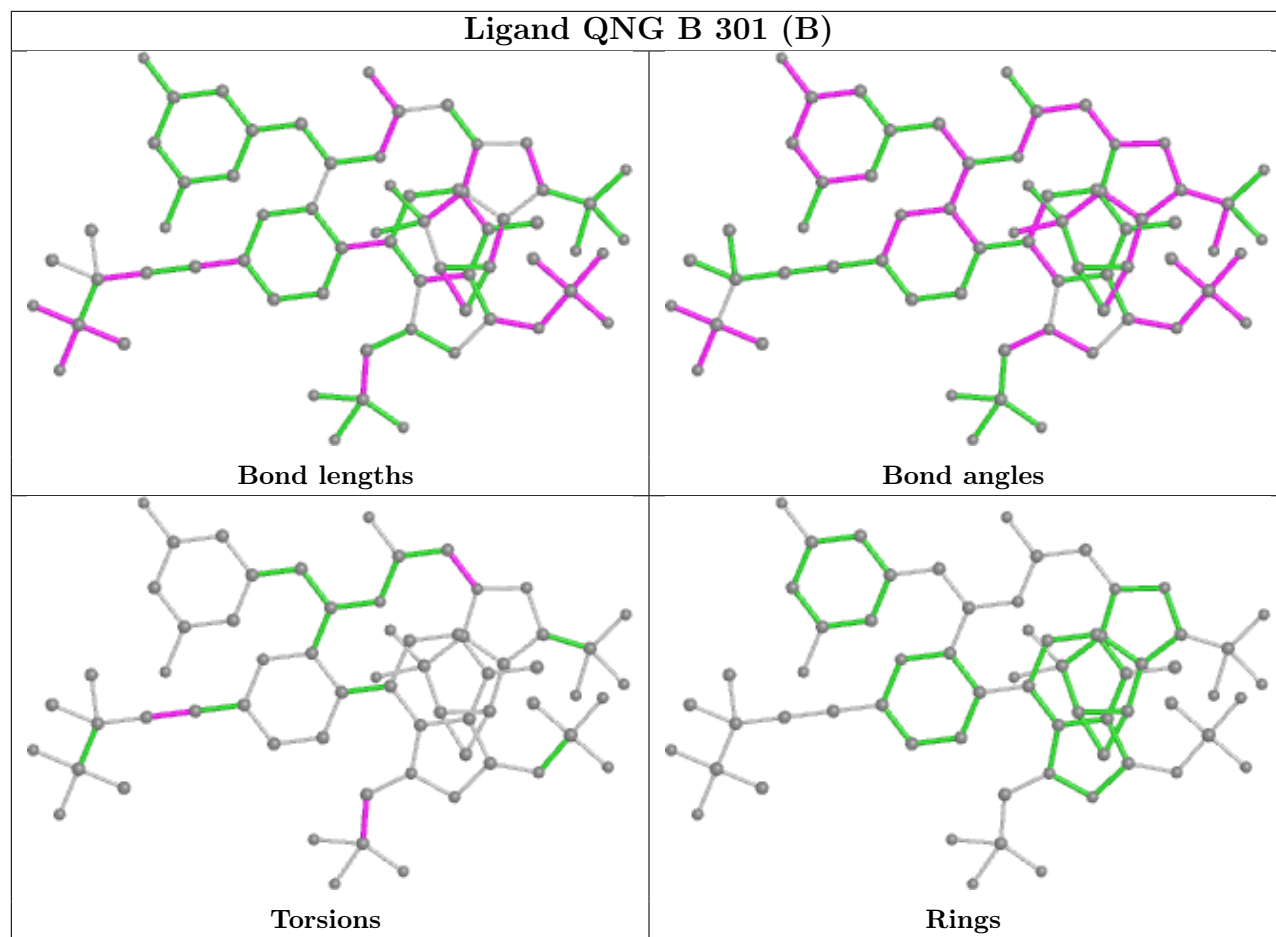
No monomer is involved in short contacts.

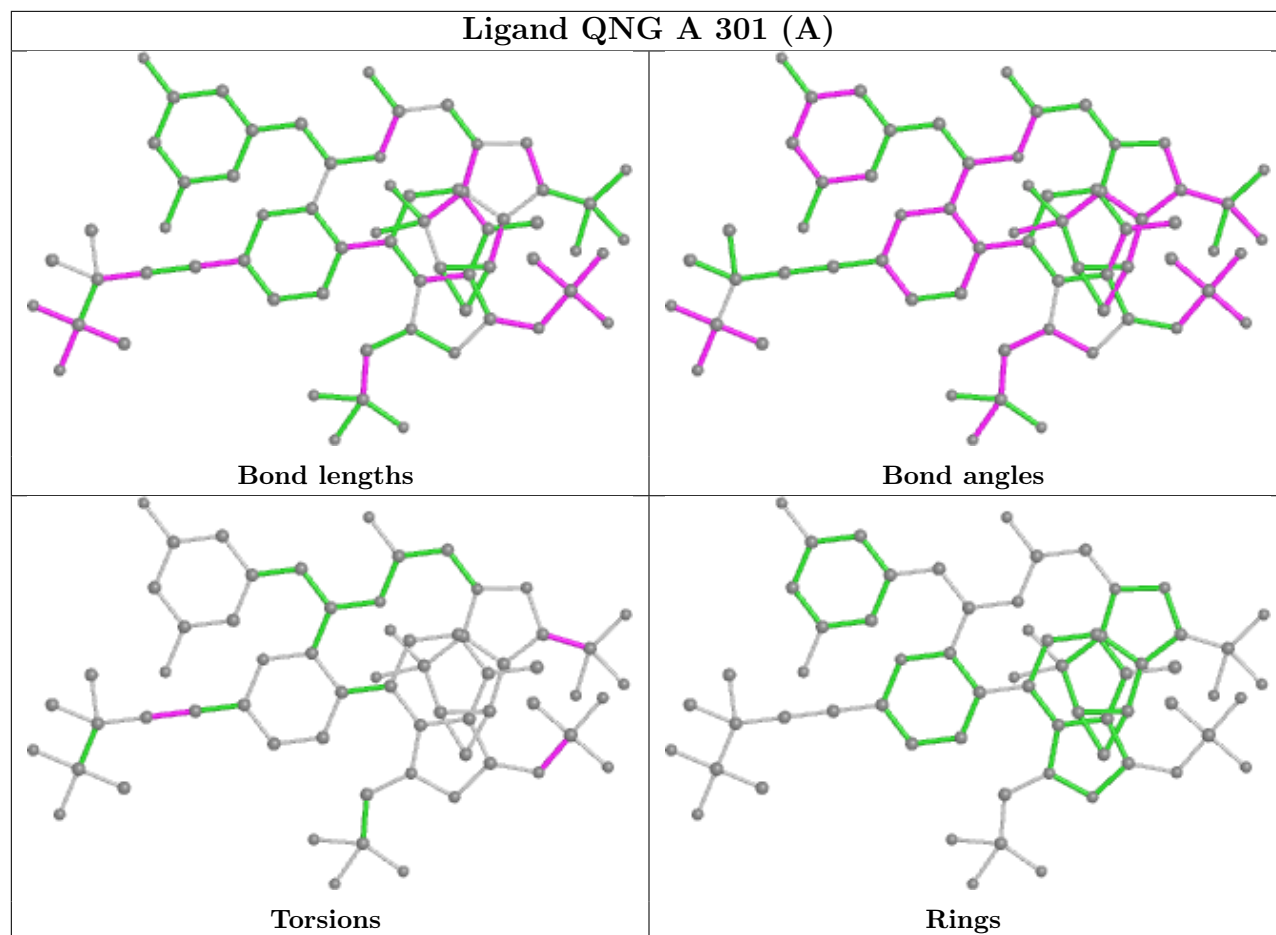
The following is a two-dimensional graphical depiction of Mogul quality analysis of bond lengths, bond angles, torsion angles, and ring geometry for all instances of the Ligand of Interest. In addition, ligands with molecular weight > 250 and outliers as shown on the validation Tables will also be included. For torsion angles, if less than 5% of the Mogul distribution of torsion angles is within 10 degrees of the torsion angle in question, then that torsion angle is considered an outlier. Any bond that is central to one or more torsion angles identified as an outlier by Mogul will be highlighted in the graph. For rings, the root-mean-square deviation (RMSD) between the ring in question and similar rings identified by Mogul is calculated over all ring torsion angles. If the average RMSD is greater than 60 degrees and the minimal RMSD between the ring in question and any Mogul-identified rings is also greater than 60 degrees, then that ring is considered an outlier. The outliers are highlighted in purple. The color gray indicates Mogul did not find sufficient equivalents in the CSD to analyse the geometry.

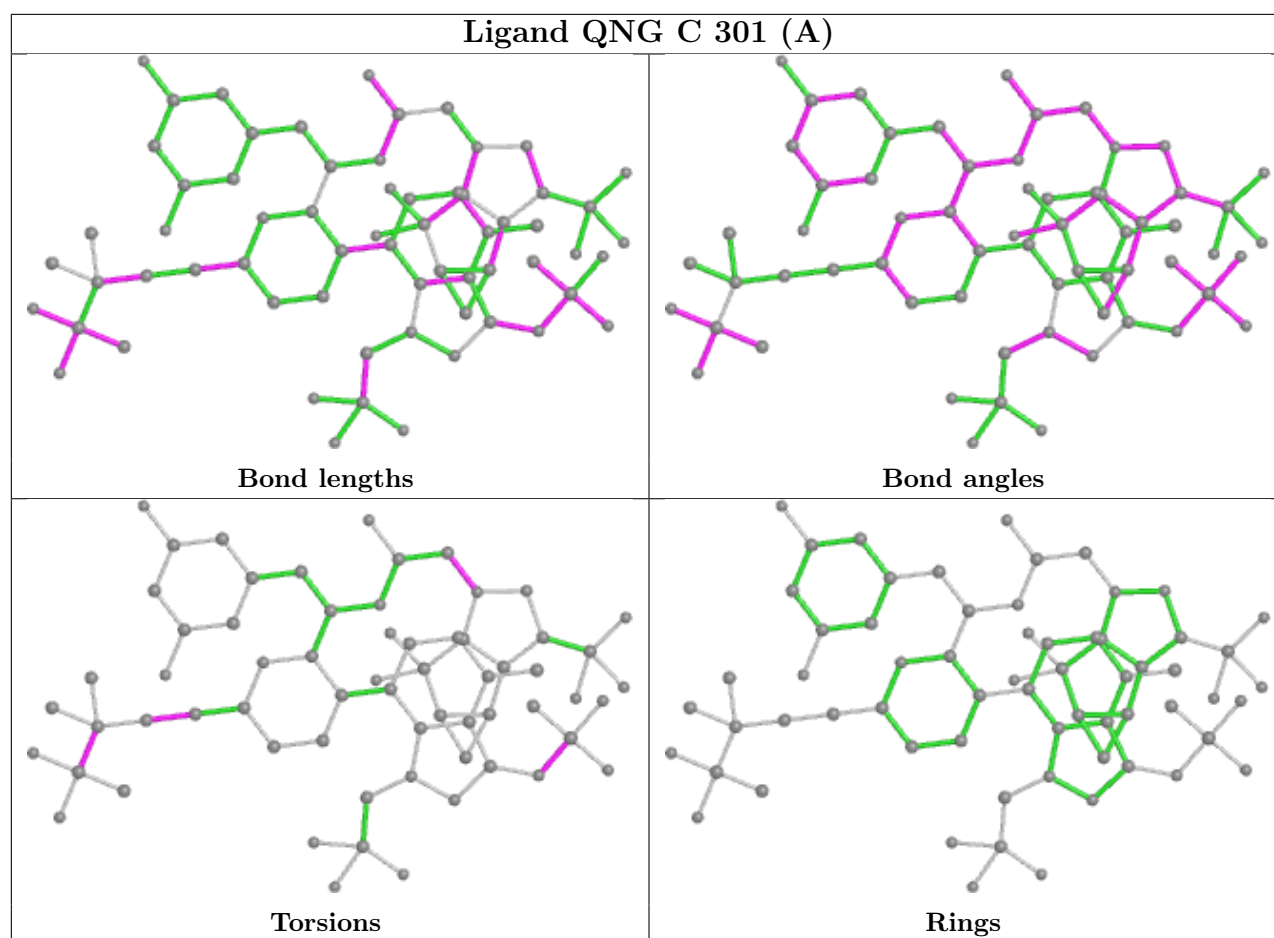












4.7 Other polymers [\(i\)](#)

There are no such residues in this entry.

4.8 Polymer linkage issues [\(i\)](#)

There are no chain breaks in this entry.

5 Fit of model and data

5.1 Protein, DNA and RNA chains

EDS failed to run properly - this section is therefore empty.

5.2 Non-standard residues in protein, DNA, RNA chains

EDS failed to run properly - this section is therefore empty.

5.3 Carbohydrates

EDS failed to run properly - this section is therefore empty.

5.4 Ligands

EDS failed to run properly - this section is therefore empty.

5.5 Other polymers

EDS failed to run properly - this section is therefore empty.