



# Full wwPDB X-ray Structure Validation Report ⓘ

Sep 25, 2023 – 02:59 AM EDT

PDB ID : 5VL0  
Title : horse liver alcohol dehydrogenase complexed with NADH and N-benzyformamide  
Authors : Plapp, B.V.; Brown, E.N.; Ramaswamy, S.; Baskar Raj, S.  
Deposited on : 2017-04-24  
Resolution : 1.20 Å(reported)

This is a Full wwPDB X-ray Structure Validation Report for a publicly released PDB entry.

We welcome your comments at [validation@mail.wwpdb.org](mailto:validation@mail.wwpdb.org)

A user guide is available at

<https://www.wwpdb.org/validation/2017/XrayValidationReportHelp>

with specific help available everywhere you see the ⓘ symbol.

The types of validation reports are described at

<http://www.wwpdb.org/validation/2017/FAQs#types>.

---

The following versions of software and data (see [references ⓘ](#)) were used in the production of this report:

MolProbity : 4.02b-467  
Mogul : 1.8.5 (274361), CSD as541be (2020)  
Xtriage (Phenix) : 1.13  
EDS : 2.35.1  
buster-report : 1.1.7 (2018)  
Percentile statistics : 20191225.v01 (using entries in the PDB archive December 25th 2019)  
Refmac : 5.8.0158  
CCP4 : 7.0.044 (Gargrove)  
Ideal geometry (proteins) : Engh & Huber (2001)  
Ideal geometry (DNA, RNA) : Parkinson et al. (1996)  
Validation Pipeline (wwPDB-VP) : 2.35.1

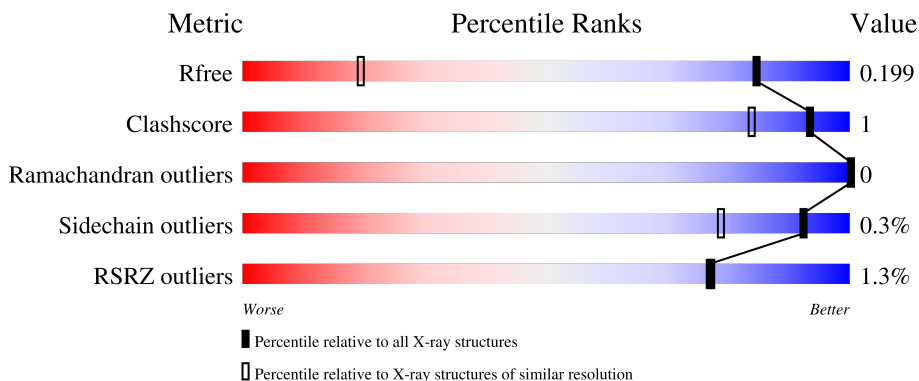
# 1 Overall quality at a glance

The following experimental techniques were used to determine the structure:

*X-RAY DIFFRACTION*

The reported resolution of this entry is 1.20 Å.

Percentile scores (ranging between 0-100) for global validation metrics of the entry are shown in the following graphic. The table shows the number of entries on which the scores are based.



Metric	Whole archive (#Entries)	Similar resolution (#Entries, resolution range(Å))
$R_{free}$	130704	1223 (1.22-1.18)
Clashscore	141614	1286 (1.22-1.18)
Ramachandran outliers	138981	1240 (1.22-1.18)
Sidechain outliers	138945	1239 (1.22-1.18)
RSRZ outliers	127900	1200 (1.22-1.18)

The table below summarises the geometric issues observed across the polymeric chains and their fit to the electron density. The red, orange, yellow and green segments of the lower bar indicate the fraction of residues that contain outliers for  $\geq 3$ , 2, 1 and 0 types of geometric quality criteria respectively. A grey segment represents the fraction of residues that are not modelled. The numeric value for each fraction is indicated below the corresponding segment, with a dot representing fractions  $\leq 5\%$ . The upper red bar (where present) indicates the fraction of residues that have poor fit to the electron density. The numeric value is given above the bar.

Mol	Chain	Length	Quality of chain
1	A	374	 96%
1	B	374	 97%
1	C	374	 95%
1	D	374	 95% 5%

## 2 Entry composition [i](#)

There are 6 unique types of molecules in this entry. The entry contains 12940 atoms, of which 0 are hydrogens and 0 are deuteriums.

In the tables below, the ZeroOcc column contains the number of atoms modelled with zero occupancy, the AltConf column contains the number of residues with at least one atom in alternate conformation and the Trace column contains the number of residues modelled with at most 2 atoms.

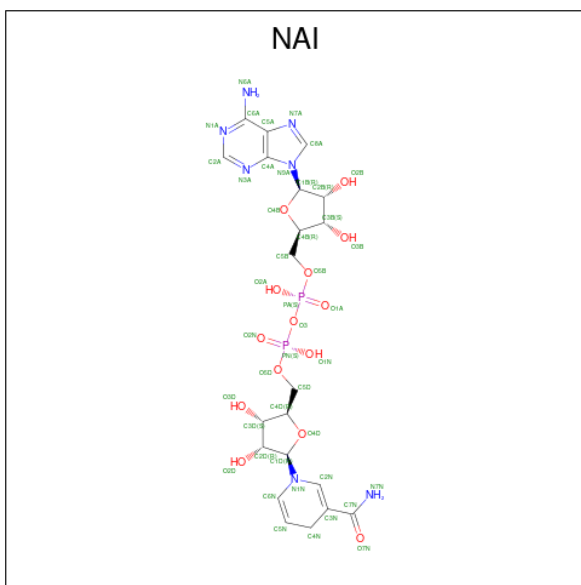
- Molecule 1 is a protein called Alcohol dehydrogenase E chain.

Mol	Chain	Residues	Atoms					ZeroOcc	AltConf	Trace
			Total	C	N	O	S			
1	A	374	2821	1797	474	523	27	0	9	0
1	B	374	2846	1810	480	532	24	0	13	0
1	C	374	2845	1812	479	528	26	0	14	0
1	D	374	2831	1801	475	529	26	0	12	0

- Molecule 2 is ZINC ION (three-letter code: ZN) (formula: Zn).

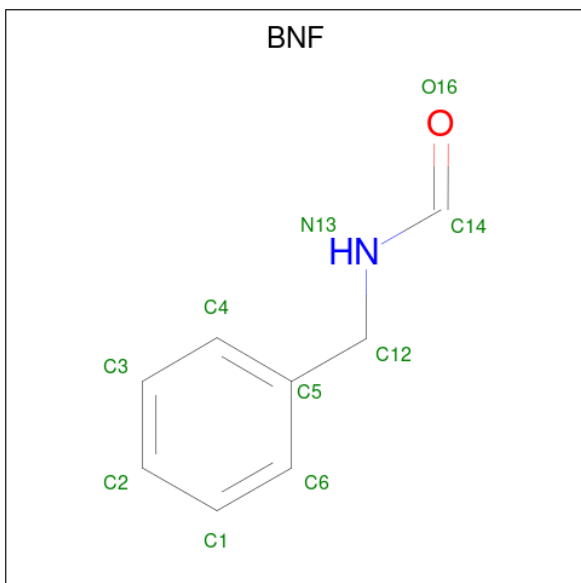
Mol	Chain	Residues	Atoms		ZeroOcc	AltConf
2	A	2	Total	Zn	0	0
			2	2		
2	B	2	Total	Zn	0	0
			2	2		
2	C	2	Total	Zn	0	0
			2	2		
2	D	2	Total	Zn	0	0
			2	2		

- Molecule 3 is 1,4-DIHYDRONICOTINAMIDE ADENINE DINUCLEOTIDE (three-letter code: NAI) (formula: C<sub>21</sub>H<sub>29</sub>N<sub>7</sub>O<sub>14</sub>P<sub>2</sub>).



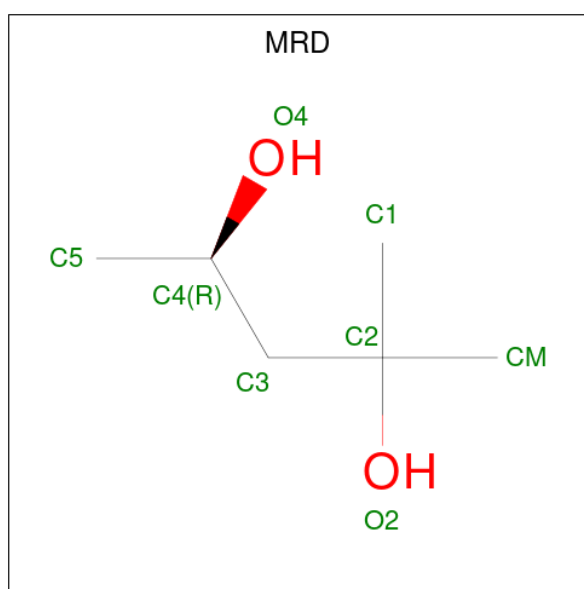
Mol	Chain	Residues	Atoms				ZeroOcc	AltConf		
			Total	C	N	O			P	
3	A	1	Total	44	21	7	14	2	0	0
3	B	1	Total	44	21	7	14	2	0	0
3	C	1	Total	44	21	7	14	2	0	0
3	D	1	Total	44	21	7	14	2	0	0

- Molecule 4 is N-BENZYLFORMAMIDE (three-letter code: BNF) (formula: C<sub>8</sub>H<sub>9</sub>NO).



Mol	Chain	Residues	Atoms				ZeroOcc	AltConf
4	A	1	Total	C	N	O	0	0
			10	8	1	1		
4	B	1	Total	C	N	O	0	0
			10	8	1	1		
4	C	1	Total	C	N	O	0	0
			10	8	1	1		
4	D	1	Total	C	N	O	0	0
			10	8	1	1		

- Molecule 5 is (4R)-2-METHYLPENTANE-2,4-DIOL (three-letter code: MRD) (formula: C<sub>6</sub>H<sub>14</sub>O<sub>2</sub>).



Mol	Chain	Residues	Atoms			ZeroOcc	AltConf
5	B	1	Total	C	O	0	0
			8	6	2		
5	C	1	Total	C	O	0	1
			8	6	2		

- Molecule 6 is water.

Mol	Chain	Residues	Atoms		ZeroOcc	AltConf
6	A	324	Total	O	0	4
			326	326		
6	B	322	Total	O	0	3
			323	323		
6	C	367	Total	O	0	12
			371	371		

*Continued on next page...*

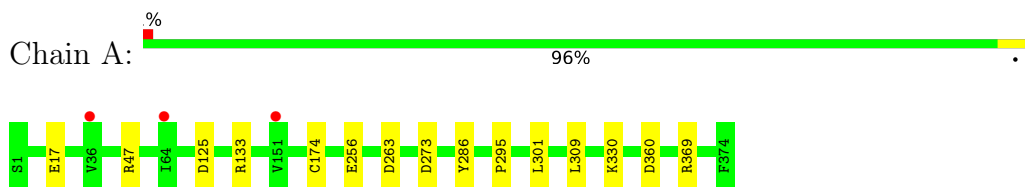
*Continued from previous page...*

<b>Mol</b>	<b>Chain</b>	<b>Residues</b>	<b>Atoms</b>		<b>ZeroOcc</b>	<b>AltConf</b>
6	D	334	Total 337	O 337	0	8

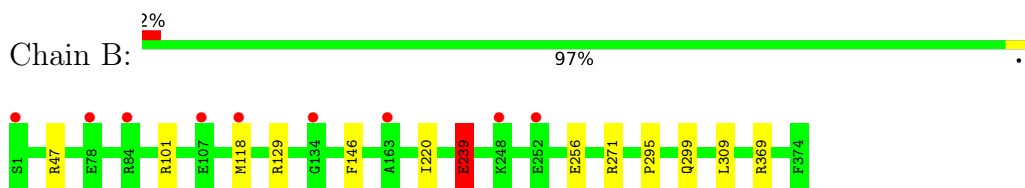
### 3 Residue-property plots [i](#)

These plots are drawn for all protein, RNA, DNA and oligosaccharide chains in the entry. The first graphic for a chain summarises the proportions of the various outlier classes displayed in the second graphic. The second graphic shows the sequence view annotated by issues in geometry and electron density. Residues are color-coded according to the number of geometric quality criteria for which they contain at least one outlier: green = 0, yellow = 1, orange = 2 and red = 3 or more. A red dot above a residue indicates a poor fit to the electron density ( $RSRZ > 2$ ). Stretches of 2 or more consecutive residues without any outlier are shown as a green connector. Residues present in the sample, but not in the model, are shown in grey.

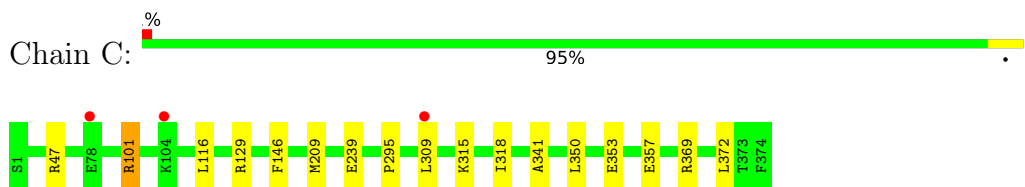
- Molecule 1: Alcohol dehydrogenase E chain



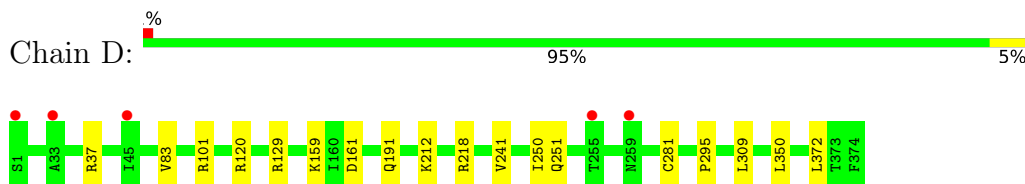
- Molecule 1: Alcohol dehydrogenase E chain



- Molecule 1: Alcohol dehydrogenase E chain



- Molecule 1: Alcohol dehydrogenase E chain



## 4 Data and refinement statistics

Property	Value	Source
Space group	P 1 21 1	Depositor
Cell constants a, b, c, $\alpha$ , $\beta$ , $\gamma$	50.16Å 180.29Å 86.92Å 90.00° 106.18° 90.00°	Depositor
Resolution (Å)	19.95 – 1.20 19.95 – 1.20	Depositor EDS
% Data completeness (in resolution range)	79.4 (19.95-1.20) 79.4 (19.95-1.20)	Depositor EDS
$R_{merge}$	0.09	Depositor
$R_{sym}$	(Not available)	Depositor
$\langle I/\sigma(I) \rangle$ <sup>1</sup>	2.58 (at 1.20Å)	Xtrriage
Refinement program	REFMAC 5.8.0158	Depositor
R, $R_{free}$	0.158 , 0.199 0.158 , 0.199	Depositor DCC
$R_{free}$ test set	3775 reflections (1.03%)	wwPDB-VP
Wilson B-factor (Å <sup>2</sup> )	13.9	Xtrriage
Anisotropy	0.725	Xtrriage
Bulk solvent $k_{sol}$ (e/Å <sup>3</sup> ), $B_{sol}$ (Å <sup>2</sup> )	0.39 , 44.3	EDS
L-test for twinning <sup>2</sup>	$\langle  L  \rangle = 0.51$ , $\langle L^2 \rangle = 0.34$	Xtrriage
Estimated twinning fraction	0.000 for h,-k,-h-l	Xtrriage
$F_o, F_c$ correlation	0.98	EDS
Total number of atoms	12940	wwPDB-VP
Average B, all atoms (Å <sup>2</sup> )	21.0	wwPDB-VP

Xtrriage's analysis on translational NCS is as follows: *The analyses of the Patterson function reveals a significant off-origin peak that is 67.13 % of the origin peak, indicating pseudo-translational symmetry. The chance of finding a peak of this or larger height randomly in a structure without pseudo-translational symmetry is equal to 5.4128e-06. The detected translational NCS is most likely also responsible for the elevated intensity ratio.*

<sup>1</sup>Intensities estimated from amplitudes.

<sup>2</sup>Theoretical values of  $\langle |L| \rangle$ ,  $\langle L^2 \rangle$  for acentric reflections are 0.5, 0.333 respectively for untwinned datasets, and 0.375, 0.2 for perfectly twinned datasets.



## 5 Model quality i

### 5.1 Standard geometry i

Bond lengths and bond angles in the following residue types are not validated in this section: ZN, NAI, BNF, MRD

The Z score for a bond length (or angle) is the number of standard deviations the observed value is removed from the expected value. A bond length (or angle) with  $|Z| > 5$  is considered an outlier worth inspection. RMSZ is the root-mean-square of all Z scores of the bond lengths (or angles).

Mol	Chain	Bond lengths		Bond angles	
		RMSZ	# $ Z  > 5$	RMSZ	# $ Z  > 5$
1	A	0.95	1/2909 (0.0%)	1.01	7/3927 (0.2%)
1	B	0.94	3/2947 (0.1%)	0.98	8/3978 (0.2%)
1	C	0.98	2/2953 (0.1%)	1.02	7/3987 (0.2%)
1	D	0.91	0/2933	0.98	6/3961 (0.2%)
All	All	0.95	6/11742 (0.1%)	1.00	28/15853 (0.2%)

All (6) bond length outliers are listed below:

Mol	Chain	Res	Type	Atoms	Z	Observed(Å)	Ideal(Å)
1	B	256	GLU	CD-OE1	-7.66	1.17	1.25
1	A	256	GLU	CD-OE2	-6.91	1.18	1.25
1	B	239[A]	GLU	CD-OE2	6.24	1.32	1.25
1	B	239[B]	GLU	CD-OE2	6.24	1.32	1.25
1	C	353	GLU	CG-CD	5.38	1.60	1.51
1	C	315	LYS	CA-CB	-5.30	1.42	1.53

All (28) bond angle outliers are listed below:

Mol	Chain	Res	Type	Atoms	Z	Observed(°)	Ideal(°)
1	C	129	ARG	NE-CZ-NH2	-8.09	116.26	120.30
1	B	271	ARG	NE-CZ-NH1	6.89	123.74	120.30
1	A	47	ARG	NE-CZ-NH2	-6.77	116.92	120.30
1	A	369	ARG	NE-CZ-NH1	6.55	123.58	120.30
1	B	129	ARG	NE-CZ-NH2	-6.40	117.10	120.30
1	C	101[A]	ARG	NE-CZ-NH1	6.24	123.42	120.30
1	C	101[B]	ARG	NE-CZ-NH1	6.24	123.42	120.30
1	B	146	PHE	CB-CG-CD2	-6.13	116.51	120.80
1	B	369	ARG	NE-CZ-NH2	-6.11	117.24	120.30
1	D	37	ARG	NE-CZ-NH1	5.74	123.17	120.30
1	A	133	ARG	NE-CZ-NH2	-5.70	117.45	120.30

*Continued on next page...*

Continued from previous page...

Mol	Chain	Res	Type	Atoms	Z	Observed(°)	Ideal(°)
1	C	146	PHE	CB-CG-CD1	5.67	124.77	120.80
1	D	161	ASP	CB-CG-OD1	5.66	123.40	118.30
1	B	47	ARG	NE-CZ-NH2	-5.58	117.51	120.30
1	C	369	ARG	NE-CZ-NH2	-5.52	117.54	120.30
1	B	129	ARG	NE-CZ-NH1	5.46	123.03	120.30
1	A	263	ASP	CB-CG-OD1	-5.37	113.47	118.30
1	C	146	PHE	CB-CG-CD2	-5.36	117.05	120.80
1	A	369	ARG	NE-CZ-NH2	-5.35	117.62	120.30
1	B	271	ARG	NE-CZ-NH2	-5.30	117.65	120.30
1	C	47	ARG	NE-CZ-NH2	-5.28	117.66	120.30
1	D	218	ARG	NE-CZ-NH1	-5.26	117.67	120.30
1	D	101	ARG	NE-CZ-NH2	5.21	122.90	120.30
1	A	125	ASP	CB-CG-OD1	5.18	122.97	118.30
1	D	129	ARG	NE-CZ-NH2	-5.17	117.71	120.30
1	B	146	PHE	CB-CG-CD1	5.13	124.39	120.80
1	D	161	ASP	CB-CG-OD2	-5.05	113.75	118.30
1	A	273	ASP	CB-CG-OD2	5.04	122.84	118.30

There are no chirality outliers.

There are no planarity outliers.

## 5.2 Too-close contacts [\(i\)](#)

In the following table, the Non-H and H(model) columns list the number of non-hydrogen atoms and hydrogen atoms in the chain respectively. The H(added) column lists the number of hydrogen atoms added and optimized by MolProbity. The Clashes column lists the number of clashes within the asymmetric unit, whereas Symm-Clashes lists symmetry-related clashes.

Mol	Chain	Non-H	H(model)	H(added)	Clashes	Symm-Clashes
1	A	2821	0	2904	8	0
1	B	2846	0	2920	7	0
1	C	2845	0	2928	8	0
1	D	2831	0	2902	14	0
2	A	2	0	0	0	0
2	B	2	0	0	0	0
2	C	2	0	0	0	0
2	D	2	0	0	0	0
3	A	44	0	27	1	0
3	B	44	0	27	0	0
3	C	44	0	27	0	0
3	D	44	0	27	0	0

Continued on next page...

Continued from previous page...

Mol	Chain	Non-H	H(model)	H(added)	Clashes	Symm-Clashes
4	A	10	0	9	1	0
4	B	10	0	9	0	0
4	C	10	0	9	2	0
4	D	10	0	9	0	0
5	B	8	0	14	2	0
5	C	8	0	14	0	0
6	A	326	0	0	2	0
6	B	323	0	0	1	0
6	C	371	0	0	3	0
6	D	337	0	0	3	0
All	All	12940	0	11826	32	0

The all-atom clashscore is defined as the number of clashes found per 1000 atoms (including hydrogen atoms). The all-atom clashscore for this structure is 1.

All (32) close contacts within the same asymmetric unit are listed below, sorted by their clash magnitude.

Atom-1	Atom-2	Interatomic distance (Å)	Clash overlap (Å)
1:D:241[B]:VAL:HG21	1:D:250:ILE:HD11	1.59	0.84
5:B:405:MRD:H5C3	5:B:405:MRD:H1C2	1.61	0.82
1:D:251:GLN:HA	1:D:281[B]:CYS:SG	2.24	0.77
1:D:241[B]:VAL:CG2	1:D:250:ILE:HD11	2.19	0.73
1:C:309[B]:LEU:HD11	1:D:295:PRO:HD3	1.73	0.70
1:A:286:TYR:OH	1:B:101[B]:ARG:NE	2.31	0.64
1:B:220:ILE:HG12	1:B:239[A]:GLU:HG3	1.83	0.61
1:A:17:GLU:OE1	6:A:501:HOH:O	2.16	0.59
1:C:101[A]:ARG:NH1	6:C:502:HOH:O	2.38	0.55
1:A:309[B]:LEU:HD11	1:B:295:PRO:HD3	1.89	0.53
1:C:309[B]:LEU:CD1	1:D:295:PRO:HD3	2.38	0.53
1:C:295:PRO:HD3	1:D:309[A]:LEU:HD11	1.91	0.51
1:A:360:ASP:OD1	6:A:502:HOH:O	2.20	0.50
6:C:667[B]:HOH:O	1:D:295:PRO:HB2	2.10	0.49
4:C:404:BNF:H2	1:D:309[B]:LEU:HD23	1.95	0.48
1:C:116[B]:LEU:HD13	1:C:318[B]:ILE:HD12	1.94	0.48
5:B:405:MRD:H1C2	5:B:405:MRD:C5	2.40	0.48
1:D:212:LYS:NZ	6:D:506:HOH:O	2.42	0.47
1:A:295:PRO:HD3	1:B:309[B]:LEU:HD11	1.95	0.47
1:B:299[B]:GLN:OE1	6:B:501:HOH:O	2.21	0.45
1:C:357[B]:GLU:HG3	6:C:723:HOH:O	2.16	0.45
1:A:309[B]:LEU:CD1	1:B:295:PRO:HD3	2.47	0.44
4:A:404:BNF:H2	1:B:309[A]:LEU:HD23	1.99	0.44

Continued on next page...

Continued from previous page...

Atom-1	Atom-2	Interatomic distance (Å)	Clash overlap (Å)
1:D:191:GLN:HG2	6:D:752:HOH:O	2.18	0.42
4:C:404:BNF:H2	1:D:309[B]:LEU:CD2	2.50	0.42
1:C:209[B]:MET:HE1	1:C:341:ALA:H	1.86	0.41
1:C:350:LEU:O	1:C:372:LEU:HA	2.20	0.41
1:A:301:LEU:C	1:A:301:LEU:HD12	2.41	0.41
1:D:350:LEU:O	1:D:372:LEU:HA	2.20	0.41
1:D:120:ARG:HB2	6:D:651:HOH:O	2.21	0.41
1:A:174:CYS:SG	3:A:403:NAI:H5N	2.61	0.41
1:D:83:VAL:HG12	1:D:159:LYS:HB2	2.02	0.41

There are no symmetry-related clashes.

## 5.3 Torsion angles [i](#)

### 5.3.1 Protein backbone [i](#)

In the following table, the Percentiles column shows the percent Ramachandran outliers of the chain as a percentile score with respect to all X-ray entries followed by that with respect to entries of similar resolution.

The Analysed column shows the number of residues for which the backbone conformation was analysed, and the total number of residues.

Mol	Chain	Analysed	Favoured	Allowed	Outliers	Percentiles	
1	A	381/374 (102%)	370 (97%)	11 (3%)	0	100	100
1	B	385/374 (103%)	374 (97%)	11 (3%)	0	100	100
1	C	386/374 (103%)	375 (97%)	11 (3%)	0	100	100
1	D	384/374 (103%)	374 (97%)	10 (3%)	0	100	100
All	All	1536/1496 (103%)	1493 (97%)	43 (3%)	0	100	100

There are no Ramachandran outliers to report.

### 5.3.2 Protein sidechains [i](#)

In the following table, the Percentiles column shows the percent sidechain outliers of the chain as a percentile score with respect to all X-ray entries followed by that with respect to entries of similar resolution.

The Analysed column shows the number of residues for which the sidechain conformation was analysed, and the total number of residues.

Mol	Chain	Analysed	Rotameric	Outliers	Percentiles	
1	A	317/308 (103%)	315 (99%)	2 (1%)	86	63
1	B	320/308 (104%)	317 (99%)	3 (1%)	78	50
1	C	322/308 (104%)	321 (100%)	1 (0%)	92	79
1	D	320/308 (104%)	320 (100%)	0	100	100
All	All	1279/1232 (104%)	1273 (100%)	6 (0%)	92	67

All (6) residues with a non-rotameric sidechain are listed below:

Mol	Chain	Res	Type
1	A	330[A]	LYS
1	A	330[B]	LYS
1	B	118	MET
1	B	239[A]	GLU
1	B	239[B]	GLU
1	C	239	GLU

Sometimes sidechains can be flipped to improve hydrogen bonding and reduce clashes. There are no such sidechains identified.

### 5.3.3 RNA [i](#)

There are no RNA molecules in this entry.

### 5.4 Non-standard residues in protein, DNA, RNA chains [i](#)

There are no non-standard protein/DNA/RNA residues in this entry.

### 5.5 Carbohydrates [i](#)

There are no monosaccharides in this entry.

### 5.6 Ligand geometry [i](#)

Of 18 ligands modelled in this entry, 8 are monoatomic - leaving 10 for Mogul analysis.

In the following table, the Counts columns list the number of bonds (or angles) for which Mogul statistics could be retrieved, the number of bonds (or angles) that are observed in the model and the number of bonds (or angles) that are defined in the Chemical Component Dictionary. The Link column lists molecule types, if any, to which the group is linked. The Z score for a bond

length (or angle) is the number of standard deviations the observed value is removed from the expected value. A bond length (or angle) with  $|Z| > 2$  is considered an outlier worth inspection. RMSZ is the root-mean-square of all Z scores of the bond lengths (or angles).

Mol	Type	Chain	Res	Link	Bond lengths			Bond angles		
					Counts	RMSZ	# Z  > 2	Counts	RMSZ	# Z  > 2
5	MRD	B	405	-	7,7,7	0.47	0	9,10,10	1.16	0
3	NAI	C	403	-	42,48,48	1.61	8 (19%)	47,73,73	1.77	9 (19%)
4	BNF	A	404	2	10,10,10	0.94	0	10,11,11	4.53	5 (50%)
3	NAI	B	403	-	42,48,48	1.54	4 (9%)	47,73,73	1.34	4 (8%)
4	BNF	D	404	2	10,10,10	0.79	0	10,11,11	3.19	2 (20%)
4	BNF	B	404	2	10,10,10	0.87	0	10,11,11	4.11	4 (40%)
3	NAI	D	403	-	42,48,48	1.69	5 (11%)	47,73,73	1.67	8 (17%)
4	BNF	C	404	2	10,10,10	0.94	0	10,11,11	4.76	3 (30%)
3	NAI	A	403	-	42,48,48	1.61	6 (14%)	47,73,73	1.62	6 (12%)
5	MRD	C	405[A]	-	7,7,7	0.44	0	9,10,10	0.87	0

In the following table, the Chirals column lists the number of chiral outliers, the number of chiral centers analysed, the number of these observed in the model and the number defined in the Chemical Component Dictionary. Similar counts are reported in the Torsion and Rings columns. '-' means no outliers of that kind were identified.

Mol	Type	Chain	Res	Link	Chirals	Torsions	Rings
5	MRD	B	405	-	-	2/5/5/5	-
3	NAI	C	403	-	-	3/25/72/72	0/5/5/5
4	BNF	A	404	2	-	0/4/4/4	0/1/1/1
3	NAI	B	403	-	-	3/25/72/72	0/5/5/5
4	BNF	D	404	2	-	0/4/4/4	0/1/1/1
4	BNF	B	404	2	-	0/4/4/4	0/1/1/1
3	NAI	D	403	-	-	3/25/72/72	0/5/5/5
4	BNF	C	404	2	-	0/4/4/4	0/1/1/1
3	NAI	A	403	-	-	3/25/72/72	0/5/5/5
5	MRD	C	405[A]	-	-	2/5/5/5	-

All (23) bond length outliers are listed below:

Mol	Chain	Res	Type	Atoms	Z	Observed(Å)	Ideal(Å)
3	D	403	NAI	C2A-N3A	7.24	1.43	1.32
3	B	403	NAI	C2A-N1A	6.74	1.46	1.33
3	A	403	NAI	C4N-C5N	-4.15	1.38	1.48
3	A	403	NAI	C2A-N3A	4.05	1.38	1.32

*Continued on next page...*

Continued from previous page...

Mol	Chain	Res	Type	Atoms	Z	Observed(Å)	Ideal(Å)
3	C	403	NAI	C2A-N1A	3.95	1.41	1.33
3	C	403	NAI	C2A-N3A	3.88	1.38	1.32
3	C	403	NAI	C5A-C4A	-3.79	1.30	1.40
3	A	403	NAI	C6A-N1A	-3.75	1.20	1.37
3	C	403	NAI	C6A-N1A	-3.52	1.21	1.37
3	B	403	NAI	C2A-N3A	3.43	1.37	1.32
3	C	403	NAI	C4N-C3N	3.33	1.56	1.49
3	C	403	NAI	C1D-N1N	-2.83	1.38	1.46
3	A	403	NAI	C2A-N1A	2.81	1.39	1.33
3	A	403	NAI	C4A-N3A	2.77	1.39	1.35
3	D	403	NAI	C8A-N7A	-2.77	1.29	1.34
3	C	403	NAI	C6N-N1N	2.64	1.43	1.37
3	D	403	NAI	C1D-N1N	-2.45	1.39	1.46
3	D	403	NAI	O4B-C4B	-2.33	1.39	1.45
3	C	403	NAI	O4D-C4D	-2.21	1.40	1.45
3	B	403	NAI	C6N-N1N	2.19	1.42	1.37
3	A	403	NAI	C8A-N7A	-2.11	1.30	1.34
3	B	403	NAI	C6A-N1A	-2.10	1.27	1.37
3	D	403	NAI	C4A-N3A	2.05	1.38	1.35

All (41) bond angle outliers are listed below:

Mol	Chain	Res	Type	Atoms	Z	Observed(°)	Ideal(°)
4	C	404	BNF	O16-C14-N13	14.04	139.06	124.89
4	B	404	BNF	O16-C14-N13	11.97	136.96	124.89
4	A	404	BNF	O16-C14-N13	11.76	136.76	124.89
4	D	404	BNF	O16-C14-N13	9.44	134.41	124.89
3	C	403	NAI	N3A-C2A-N1A	-7.14	117.51	128.68
3	D	403	NAI	N3A-C2A-N1A	-7.00	117.74	128.68
3	A	403	NAI	N3A-C2A-N1A	-5.45	120.16	128.68
3	A	403	NAI	C2A-N1A-C6A	5.22	127.68	118.75
3	B	403	NAI	N3A-C2A-N1A	-5.00	120.87	128.68
3	D	403	NAI	C2A-N1A-C6A	4.40	126.29	118.75
3	B	403	NAI	C3N-C2N-N1N	4.27	129.19	123.10
4	A	404	BNF	C5-C12-N13	4.21	119.37	112.86
4	A	404	BNF	C6-C5-C4	4.13	124.66	118.17
4	C	404	BNF	C5-C12-N13	3.96	118.99	112.86
3	C	403	NAI	C3N-C2N-N1N	3.63	128.28	123.10
3	C	403	NAI	C1B-N9A-C4A	-3.61	120.30	126.64
4	A	404	BNF	C1-C6-C5	-3.39	115.44	120.63
4	A	404	BNF	C2-C3-C4	-3.38	115.05	120.19
3	A	403	NAI	C2D-C1D-N1N	3.36	121.72	113.30

Continued on next page...

Continued from previous page...

Mol	Chain	Res	Type	Atoms	Z	Observed(°)	Ideal(°)
4	B	404	BNF	C6-C5-C4	3.21	123.21	118.17
3	A	403	NAI	O4B-C1B-C2B	-3.10	102.40	106.93
3	C	403	NAI	N6A-C6A-N1A	2.90	124.58	118.57
3	C	403	NAI	C2A-N1A-C6A	2.89	123.70	118.75
3	C	403	NAI	O4D-C1D-N1N	2.87	113.67	108.06
3	C	403	NAI	C5A-C6A-N6A	-2.86	116.00	120.35
3	D	403	NAI	O4D-C1D-N1N	2.75	113.43	108.06
3	D	403	NAI	O2D-C2D-C1D	2.54	118.50	110.02
3	D	403	NAI	C1B-N9A-C4A	-2.52	122.21	126.64
4	B	404	BNF	C1-C6-C5	-2.48	116.83	120.63
3	D	403	NAI	O4B-C4B-C3B	2.40	109.87	105.11
3	B	403	NAI	C2A-N1A-C6A	2.35	122.78	118.75
3	C	403	NAI	O4B-C1B-C2B	-2.31	103.56	106.93
4	D	404	BNF	C6-C5-C4	2.26	121.72	118.17
3	D	403	NAI	O1N-PN-O2N	2.25	123.36	112.24
3	B	403	NAI	O2A-PA-O1A	2.23	123.27	112.24
3	C	403	NAI	C2D-C1D-N1N	2.13	118.64	113.30
3	A	403	NAI	C4A-C5A-N7A	-2.08	107.23	109.40
4	C	404	BNF	C6-C5-C4	2.06	121.41	118.17
3	D	403	NAI	C2D-C1D-N1N	2.05	118.44	113.30
4	B	404	BNF	C2-C3-C4	-2.04	117.08	120.19
3	A	403	NAI	O4D-C1D-C2D	-2.02	102.25	106.64

There are no chirality outliers.

All (16) torsion outliers are listed below:

Mol	Chain	Res	Type	Atoms
5	B	405	MRD	C2-C3-C4-O4
5	B	405	MRD	C2-C3-C4-C5
5	C	405[A]	MRD	C2-C3-C4-O4
3	A	403	NAI	C2D-C1D-N1N-C2N
3	B	403	NAI	C2D-C1D-N1N-C2N
3	C	403	NAI	C2D-C1D-N1N-C2N
3	D	403	NAI	C2D-C1D-N1N-C2N
3	D	403	NAI	O4D-C1D-N1N-C2N
3	A	403	NAI	O4D-C1D-N1N-C2N
3	B	403	NAI	O4D-C1D-N1N-C2N
3	C	403	NAI	O4D-C1D-N1N-C2N
3	B	403	NAI	O4B-C4B-C5B-O5B
3	C	403	NAI	O4B-C4B-C5B-O5B
3	D	403	NAI	O4B-C4B-C5B-O5B
5	C	405[A]	MRD	C2-C3-C4-C5

Continued on next page...



*Continued from previous page...*

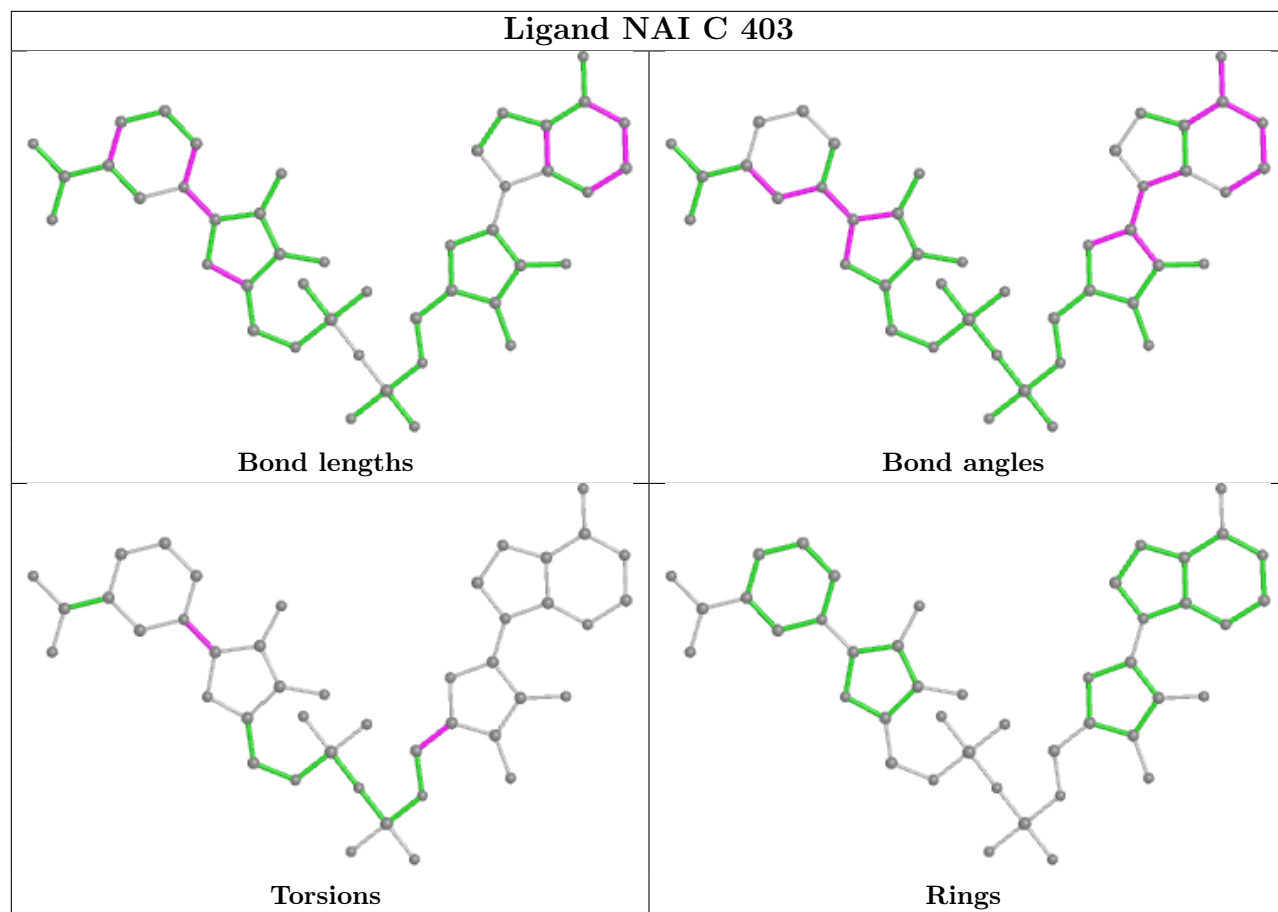
Mol	Chain	Res	Type	Atoms
3	A	403	NAI	O4B-C4B-C5B-O5B

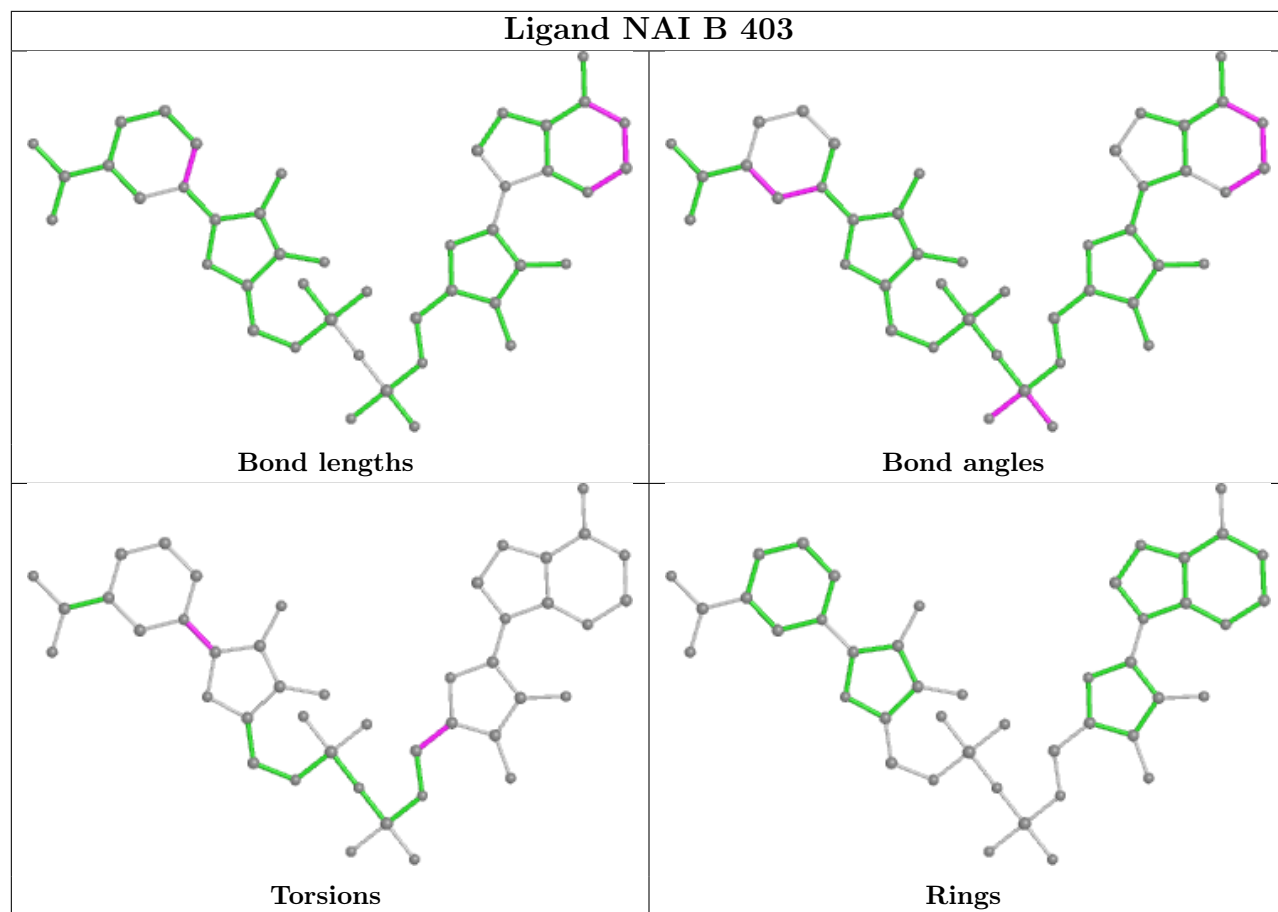
There are no ring outliers.

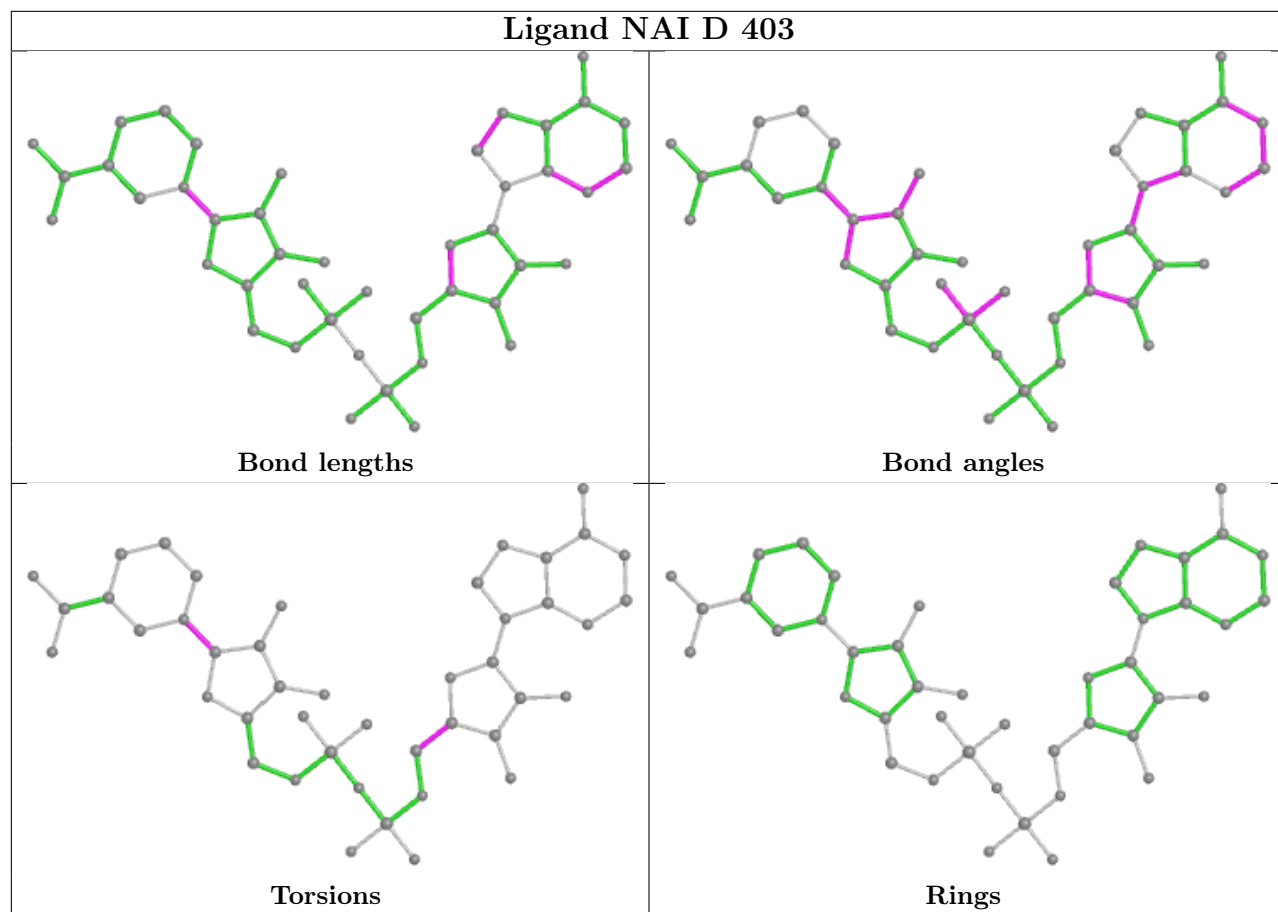
4 monomers are involved in 6 short contacts:

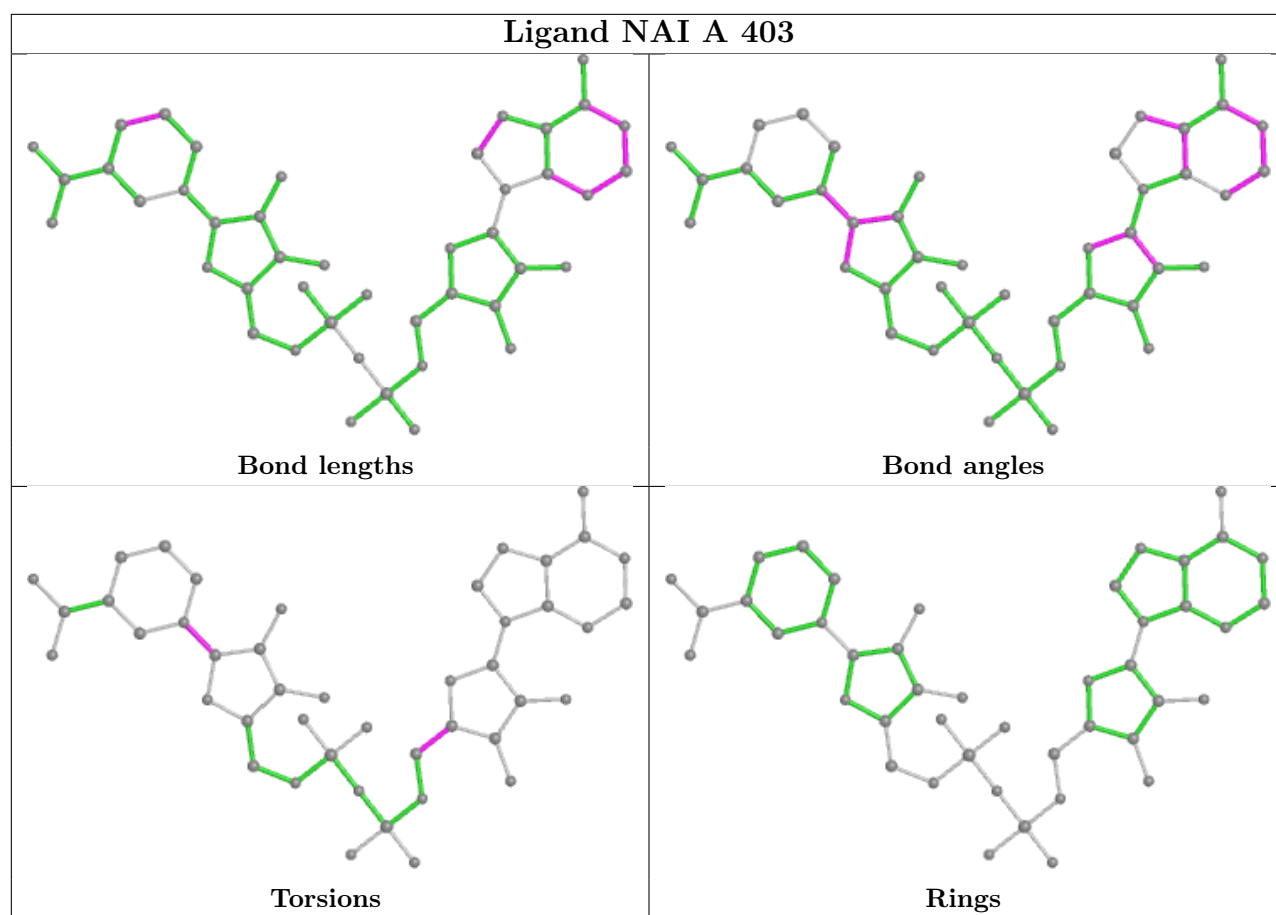
Mol	Chain	Res	Type	Clashes	Symm-Clashes
5	B	405	MRD	2	0
4	A	404	BNF	1	0
4	C	404	BNF	2	0
3	A	403	NAI	1	0

The following is a two-dimensional graphical depiction of Mogul quality analysis of bond lengths, bond angles, torsion angles, and ring geometry for all instances of the Ligand of Interest. In addition, ligands with molecular weight > 250 and outliers as shown on the validation Tables will also be included. For torsion angles, if less than 5% of the Mogul distribution of torsion angles is within 10 degrees of the torsion angle in question, then that torsion angle is considered an outlier. Any bond that is central to one or more torsion angles identified as an outlier by Mogul will be highlighted in the graph. For rings, the root-mean-square deviation (RMSD) between the ring in question and similar rings identified by Mogul is calculated over all ring torsion angles. If the average RMSD is greater than 60 degrees and the minimal RMSD between the ring in question and any Mogul-identified rings is also greater than 60 degrees, then that ring is considered an outlier. The outliers are highlighted in purple. The color gray indicates Mogul did not find sufficient equivalents in the CSD to analyse the geometry.









## 5.7 Other polymers [i](#)

There are no such residues in this entry.

## 5.8 Polymer linkage issues [i](#)

There are no chain breaks in this entry.

## 6 Fit of model and data

### 6.1 Protein, DNA and RNA chains

In the following table, the column labelled ‘#RSRZ > 2’ contains the number (and percentage) of RSRZ outliers, followed by percent RSRZ outliers for the chain as percentile scores relative to all X-ray entries and entries of similar resolution. The OWAB column contains the minimum, median, 95<sup>th</sup> percentile and maximum values of the occupancy-weighted average B-factor per residue. The column labelled ‘Q < 0.9’ lists the number of (and percentage) of residues with an average occupancy less than 0.9.

Mol	Chain	Analysed	<RSRZ>	#RSRZ>2	OWAB(Å <sup>2</sup> )	Q<0.9
1	A	374/374 (100%)	0.13	3 (0%) 86 86	13, 18, 29, 40	0
1	B	374/374 (100%)	0.08	9 (2%) 59 57	13, 18, 30, 42	0
1	C	374/374 (100%)	0.10	3 (0%) 86 86	12, 17, 27, 42	0
1	D	374/374 (100%)	0.11	5 (1%) 77 77	13, 19, 30, 40	0
All	All	1496/1496 (100%)	0.10	20 (1%) 77 77	12, 18, 29, 42	0

All (20) RSRZ outliers are listed below:

Mol	Chain	Res	Type	RSRZ
1	B	1	SER	3.6
1	B	134	GLY	3.2
1	B	163	ALA	3.0
1	D	255	THR	3.0
1	C	78	GLU	2.9
1	B	118	MET	2.8
1	D	259	ASN	2.8
1	B	78	GLU	2.5
1	C	309[A]	LEU	2.4
1	A	36	VAL	2.3
1	B	84	ARG	2.3
1	B	248	LYS	2.3
1	D	33	ALA	2.2
1	A	64	ILE	2.2
1	B	107[A]	GLU	2.2
1	D	45	ILE	2.1
1	D	1	SER	2.1
1	A	151	VAL	2.1
1	B	252	GLU	2.0
1	C	104	LYS	2.0

## 6.2 Non-standard residues in protein, DNA, RNA chains [i](#)

There are no non-standard protein/DNA/RNA residues in this entry.

## 6.3 Carbohydrates [i](#)

There are no monosaccharides in this entry.

## 6.4 Ligands [i](#)

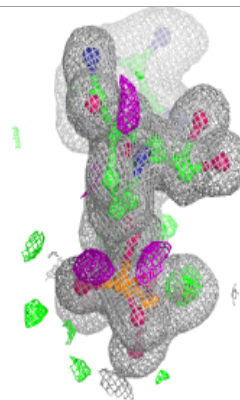
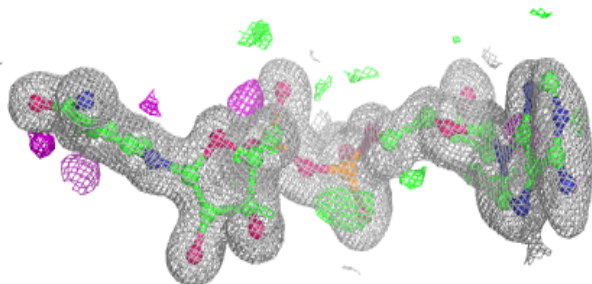
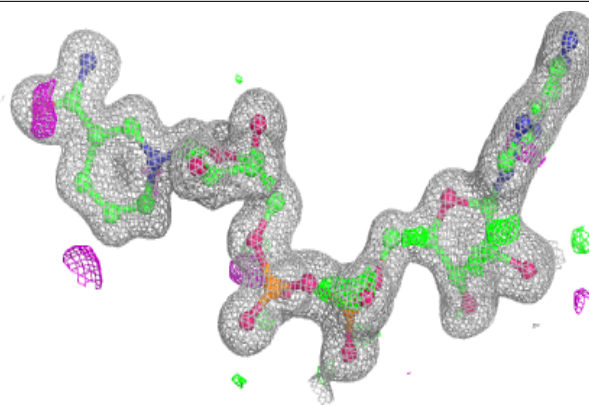
In the following table, the Atoms column lists the number of modelled atoms in the group and the number defined in the chemical component dictionary. The B-factors column lists the minimum, median, 95<sup>th</sup> percentile and maximum values of B factors of atoms in the group. The column labelled 'Q< 0.9' lists the number of atoms with occupancy less than 0.9.

Mol	Type	Chain	Res	Atoms	RSCC	RSR	B-factors( $\text{\AA}^2$ )	Q<0.9
5	MRD	C	405[A]	8/8	0.87	0.17	31,35,40,42	8
5	MRD	B	405	8/8	0.89	0.14	35,41,43,50	0
4	BNF	A	404	10/10	0.93	0.10	16,24,27,27	0
4	BNF	C	404	10/10	0.94	0.08	17,22,26,27	0
4	BNF	D	404	10/10	0.95	0.09	16,32,33,34	0
4	BNF	B	404	10/10	0.96	0.11	16,28,35,35	0
3	NAI	A	403	44/44	0.97	0.07	12,16,23,27	0
3	NAI	B	403	44/44	0.98	0.05	12,14,20,23	0
3	NAI	C	403	44/44	0.98	0.06	11,14,21,27	0
3	NAI	D	403	44/44	0.98	0.05	12,16,22,30	0
2	ZN	B	402	1/1	0.99	0.03	17,17,17,17	0
2	ZN	C	402	1/1	0.99	0.02	17,17,17,17	0
2	ZN	D	401	1/1	1.00	0.05	16,16,16,16	0
2	ZN	D	402	1/1	1.00	0.01	16,16,16,16	0
2	ZN	B	401	1/1	1.00	0.04	16,16,16,16	0
2	ZN	A	401	1/1	1.00	0.04	15,15,15,15	0
2	ZN	C	401	1/1	1.00	0.03	15,15,15,15	0
2	ZN	A	402	1/1	1.00	0.02	15,15,15,15	0

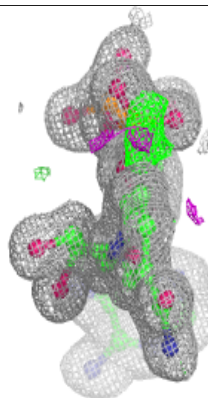
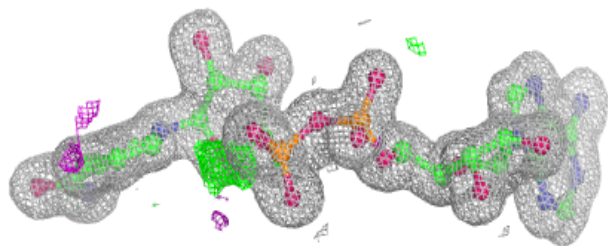
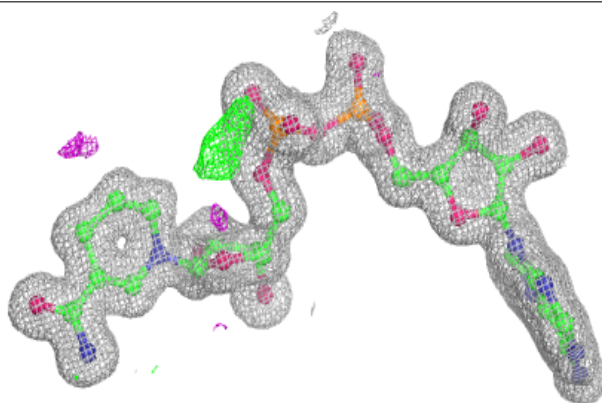
The following is a graphical depiction of the model fit to experimental electron density of all instances of the Ligand of Interest. In addition, ligands with molecular weight > 250 and outliers as shown on the geometry validation Tables will also be included. Each fit is shown from different orientation to approximate a three-dimensional view.

**Electron density around NAI A 403:**

$2mF_o-DF_c$  (at 0.7 rmsd) in gray  
 $mF_o-DF_c$  (at 3 rmsd) in purple (negative)  
and green (positive)

**Electron density around NAI B 403:**

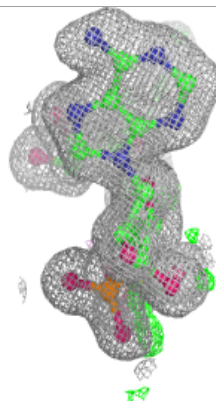
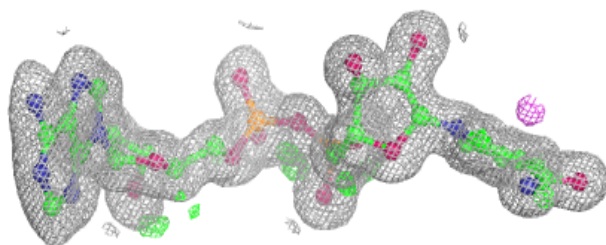
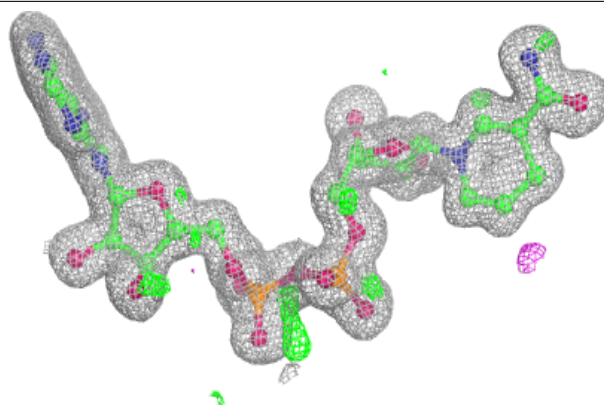
$2mF_o-DF_c$  (at 0.7 rmsd) in gray  
 $mF_o-DF_c$  (at 3 rmsd) in purple (negative)  
and green (positive)



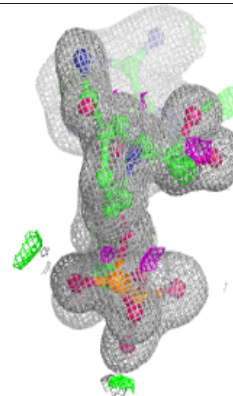
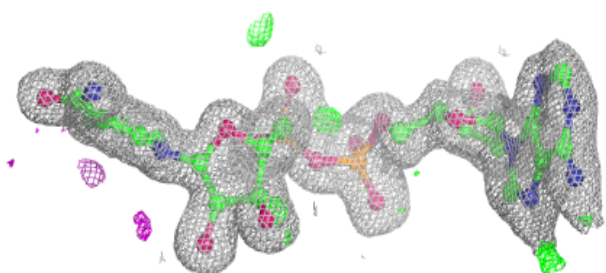
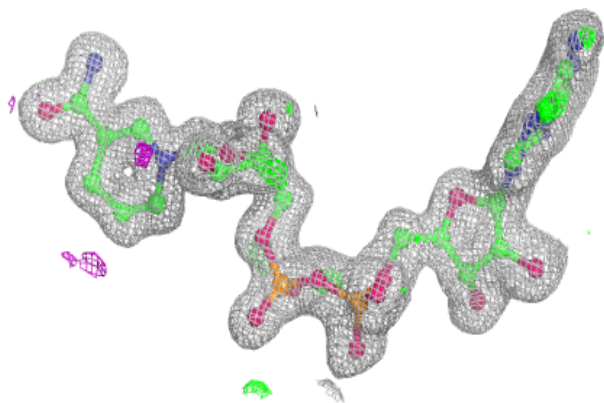


**Electron density around NAI C 403:**

$2mF_o-DF_c$  (at 0.7 rmsd) in gray  
 $mF_o-DF_c$  (at 3 rmsd) in purple (negative)  
and green (positive)

**Electron density around NAI D 403:**

$2mF_o-DF_c$  (at 0.7 rmsd) in gray  
 $mF_o-DF_c$  (at 3 rmsd) in purple (negative)  
and green (positive)



## 6.5 Other polymers [i](#)

There are no such residues in this entry.