



# Full wwPDB X-ray Structure Validation Report ⓘ

Nov 5, 2023 – 02:31 PM EST

PDB ID : 6VNC  
Title : JAK2 JH1 in complex with BL2-096  
Authors : Davis, R.R.; Schonbrunn, E.  
Deposited on : 2020-01-29  
Resolution : 2.30 Å(reported)

This is a Full wwPDB X-ray Structure Validation Report for a publicly released PDB entry.

We welcome your comments at [validation@mail.wwpdb.org](mailto:validation@mail.wwpdb.org)

A user guide is available at

<https://www.wwpdb.org/validation/2017/XrayValidationReportHelp>

with specific help available everywhere you see the ⓘ symbol.

The types of validation reports are described at

<http://www.wwpdb.org/validation/2017/FAQs#types>.

---

The following versions of software and data (see [references ⓘ](#)) were used in the production of this report:

MolProbity : 4.02b-467  
Mogul : 1.8.5 (274361), CSD as541be (2020)  
Xtriage (Phenix) : 1.13  
EDS : 2.36  
buster-report : 1.1.7 (2018)  
Percentile statistics : 20191225.v01 (using entries in the PDB archive December 25th 2019)  
Refmac : 5.8.0158  
CCP4 : 7.0.044 (Gargrove)  
Ideal geometry (proteins) : Engh & Huber (2001)  
Ideal geometry (DNA, RNA) : Parkinson et al. (1996)  
Validation Pipeline (wwPDB-VP) : 2.36

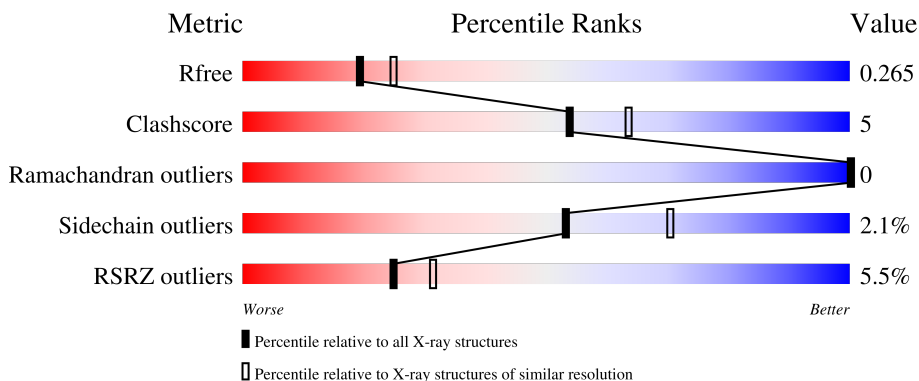
# 1 Overall quality at a glance

The following experimental techniques were used to determine the structure:

*X-RAY DIFFRACTION*


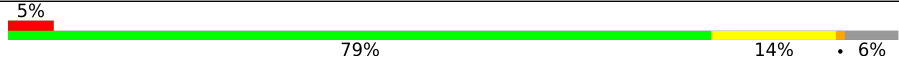
The reported resolution of this entry is 2.30 Å.

Percentile scores (ranging between 0-100) for global validation metrics of the entry are shown in the following graphic. The table shows the number of entries on which the scores are based.



Metric	Whole archive (#Entries)	Similar resolution (#Entries, resolution range(Å))
$R_{free}$	130704	5042 (2.30-2.30)
Clashscore	141614	5643 (2.30-2.30)
Ramachandran outliers	138981	5575 (2.30-2.30)
Sidechain outliers	138945	5575 (2.30-2.30)
RSRZ outliers	127900	4938 (2.30-2.30)

The table below summarises the geometric issues observed across the polymeric chains and their fit to the electron density. The red, orange, yellow and green segments of the lower bar indicate the fraction of residues that contain outliers for  $\geq 3$ , 2, 1 and 0 types of geometric quality criteria respectively. A grey segment represents the fraction of residues that are not modelled. The numeric value for each fraction is indicated below the corresponding segment, with a dot representing fractions  $\leq 5\%$ . The upper red bar (where present) indicates the fraction of residues that have poor fit to the electron density. The numeric value is given above the bar.

Mol	Chain	Length	Quality of chain
1	A	308	
1	B	308	

## 2 Entry composition [i](#)

There are 3 unique types of molecules in this entry. The entry contains 4971 atoms, of which 0 are hydrogens and 0 are deuteriums.

In the tables below, the ZeroOcc column contains the number of atoms modelled with zero occupancy, the AltConf column contains the number of residues with at least one atom in alternate conformation and the Trace column contains the number of residues modelled with at most 2 atoms.

- Molecule 1 is a protein called Tyrosine-protein kinase JAK2.

Mol	Chain	Residues	Atoms						ZeroOcc	AltConf	Trace
			Total	C	N	O	P	S			
1	B	289	2395	1521	417	442	1	14	0	0	0
1	A	297	2461	1565	426	455	1	14	0	0	0

There are 30 discrepancies between the modelled and reference sequences:

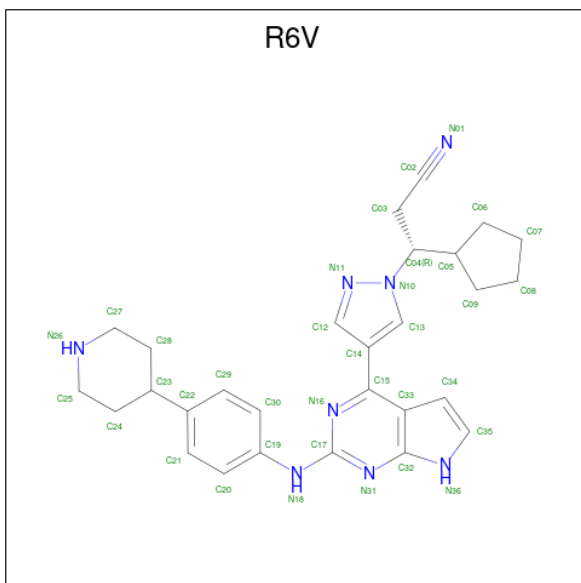
Chain	Residue	Modelled	Actual	Comment	Reference
B	825	HIS	-	expression tag	UNP O60674
B	826	HIS	-	expression tag	UNP O60674
B	827	HIS	-	expression tag	UNP O60674
B	828	HIS	-	expression tag	UNP O60674
B	829	HIS	-	expression tag	UNP O60674
B	830	HIS	-	expression tag	UNP O60674
B	831	HIS	-	expression tag	UNP O60674
B	832	HIS	-	expression tag	UNP O60674
B	833	GLU	-	expression tag	UNP O60674
B	834	ASN	-	expression tag	UNP O60674
B	835	LEU	-	expression tag	UNP O60674
B	836	TYR	-	expression tag	UNP O60674
B	837	PHE	-	expression tag	UNP O60674
B	838	GLN	-	expression tag	UNP O60674
B	839	GLY	-	expression tag	UNP O60674
A	825	HIS	-	expression tag	UNP O60674
A	826	HIS	-	expression tag	UNP O60674
A	827	HIS	-	expression tag	UNP O60674
A	828	HIS	-	expression tag	UNP O60674
A	829	HIS	-	expression tag	UNP O60674
A	830	HIS	-	expression tag	UNP O60674
A	831	HIS	-	expression tag	UNP O60674
A	832	HIS	-	expression tag	UNP O60674
A	833	GLU	-	expression tag	UNP O60674
A	834	ASN	-	expression tag	UNP O60674

*Continued on next page...*

Continued from previous page...

Chain	Residue	Modelled	Actual	Comment	Reference
A	835	LEU	-	expression tag	UNP O60674
A	836	TYR	-	expression tag	UNP O60674
A	837	PHE	-	expression tag	UNP O60674
A	838	GLN	-	expression tag	UNP O60674
A	839	GLY	-	expression tag	UNP O60674

- Molecule 2 is (3R)-3-cyclopentyl-3-[4-(2-{[4-(piperidin-4-yl)phenyl]amino}-7H-pyrrolo[2,3-d]pyrimidin-4-yl)-1H-pyrazol-1-yl]propanenitrile (three-letter code: R6V) (formula: C<sub>28</sub>H<sub>32</sub>N<sub>8</sub>) (labeled as "Ligand of Interest" by depositor).



Mol	Chain	Residues	Atoms		ZeroOcc	AltConf	
2	B	1	Total	C	N	0	0
			36	28	8		
2	A	1	Total	C	N	0	0
			36	28	8		

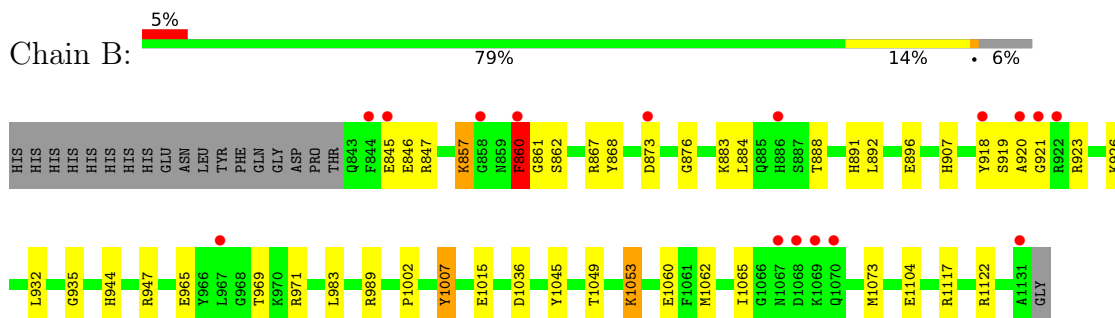
- Molecule 3 is water.

Mol	Chain	Residues	Atoms		ZeroOcc	AltConf
3	B	25	Total	O	0	0
			25	25		
3	A	18	Total	O	0	0
			18	18		

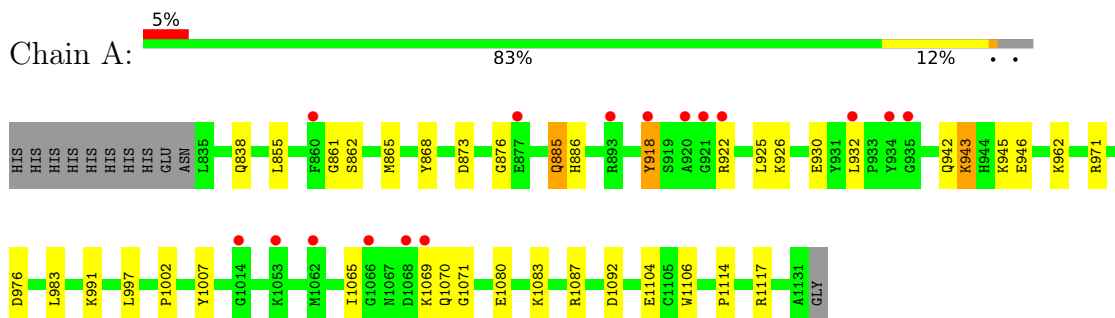
### 3 Residue-property plots [i](#)

These plots are drawn for all protein, RNA, DNA and oligosaccharide chains in the entry. The first graphic for a chain summarises the proportions of the various outlier classes displayed in the second graphic. The second graphic shows the sequence view annotated by issues in geometry and electron density. Residues are color-coded according to the number of geometric quality criteria for which they contain at least one outlier: green = 0, yellow = 1, orange = 2 and red = 3 or more. A red dot above a residue indicates a poor fit to the electron density ( $RSRZ > 2$ ). Stretches of 2 or more consecutive residues without any outlier are shown as a green connector. Residues present in the sample, but not in the model, are shown in grey.

- Molecule 1: Tyrosine-protein kinase JAK2



- Molecule 1: Tyrosine-protein kinase JAK2



## 4 Data and refinement statistics

Property	Value	Source
Space group	P 41	Depositor
Cell constants a, b, c, $\alpha$ , $\beta$ , $\gamma$	112.68Å 112.68Å 70.26Å 90.00° 90.00° 90.00°	Depositor
Resolution (Å)	43.95 – 2.30 43.95 – 2.30	Depositor EDS
% Data completeness (in resolution range)	97.7 (43.95-2.30) 99.8 (43.95-2.30)	Depositor EDS
$R_{merge}$	(Not available)	Depositor
$R_{sym}$	(Not available)	Depositor
$\langle I/\sigma(I) \rangle$ <sup>1</sup>	1.68 (at 2.29Å)	Xtrriage
Refinement program	PHENIX 1.14-3260_3260	Depositor
R, $R_{free}$	0.226 , 0.269 0.223 , 0.265	Depositor DCC
$R_{free}$ test set	937 reflections (2.39%)	wwPDB-VP
Wilson B-factor (Å <sup>2</sup> )	54.5	Xtrriage
Anisotropy	0.295	Xtrriage
Bulk solvent $k_{sol}$ (e/Å <sup>3</sup> ), $B_{sol}$ (Å <sup>2</sup> )	0.33 , 47.2	EDS
L-test for twinning <sup>2</sup>	$\langle  L  \rangle = 0.47$ , $\langle L^2 \rangle = 0.30$	Xtrriage
Estimated twinning fraction	0.042 for h,-k,-l	Xtrriage
$F_o, F_c$ correlation	0.94	EDS
Total number of atoms	4971	wwPDB-VP
Average B, all atoms (Å <sup>2</sup> )	71.0	wwPDB-VP

Xtrriage's analysis on translational NCS is as follows: *The largest off-origin peak in the Patterson function is 3.44% of the height of the origin peak. No significant pseudotranslation is detected.*

<sup>1</sup>Intensities estimated from amplitudes.

<sup>2</sup>Theoretical values of  $\langle |L| \rangle$ ,  $\langle L^2 \rangle$  for acentric reflections are 0.5, 0.333 respectively for untwinned datasets, and 0.375, 0.2 for perfectly twinned datasets.

## 5 Model quality [i](#)

### 5.1 Standard geometry [i](#)

Bond lengths and bond angles in the following residue types are not validated in this section: PTR, R6V

The Z score for a bond length (or angle) is the number of standard deviations the observed value is removed from the expected value. A bond length (or angle) with  $|Z| > 5$  is considered an outlier worth inspection. RMSZ is the root-mean-square of all Z scores of the bond lengths (or angles).

Mol	Chain	Bond lengths		Bond angles	
		RMSZ	# Z  >5	RMSZ	# Z  >5
1	A	0.36	0/2498	0.52	0/3362
1	B	0.39	0/2429	0.68	6/3267 (0.2%)
All	All	0.37	0/4927	0.60	6/6629 (0.1%)

Chiral center outliers are detected by calculating the chiral volume of a chiral center and verifying if the center is modelled as a planar moiety or with the opposite hand. A planarity outlier is detected by checking planarity of atoms in a peptide group, atoms in a mainchain group or atoms of a sidechain that are expected to be planar.

Mol	Chain	#Chirality outliers	#Planarity outliers
1	B	0	1

There are no bond length outliers.

All (6) bond angle outliers are listed below:

Mol	Chain	Res	Type	Atoms	Z	Observed( $^{\circ}$ )	Ideal( $^{\circ}$ )
1	B	860	PHE	CB-CG-CD2	-9.72	113.99	120.80
1	B	947	ARG	CB-CG-CD	-8.34	89.93	111.60
1	B	947	ARG	NE-CZ-NH1	6.53	123.56	120.30
1	B	1015	GLU	CA-CB-CG	-6.37	99.38	113.40
1	B	947	ARG	NE-CZ-NH2	-6.05	117.27	120.30
1	B	1073	MET	CA-CB-CG	-5.54	103.88	113.30

There are no chirality outliers.

All (1) planarity outliers are listed below:

Mol	Chain	Res	Type	Group
1	B	860	PHE	Sidechain

## 5.2 Too-close contacts [i](#)

In the following table, the Non-H and H(model) columns list the number of non-hydrogen atoms and hydrogen atoms in the chain respectively. The H(added) column lists the number of hydrogen atoms added and optimized by MolProbity. The Clashes column lists the number of clashes within the asymmetric unit, whereas Symm-Clashes lists symmetry-related clashes.

Mol	Chain	Non-H	H(model)	H(added)	Clashes	Symm-Clashes
1	A	2461	0	2435	25	0
1	B	2395	0	2377	27	2
2	A	36	0	0	0	0
2	B	36	0	0	2	0
3	A	18	0	0	1	0
3	B	25	0	0	4	0
All	All	4971	0	4812	52	2

The all-atom clashscore is defined as the number of clashes found per 1000 atoms (including hydrogen atoms). The all-atom clashscore for this structure is 5.

All (52) close contacts within the same asymmetric unit are listed below, sorted by their clash magnitude.

Atom-1	Atom-2	Interatomic distance (Å)	Clash overlap (Å)
1:B:883:LYS:NZ	3:B:1303:HOH:O	1.94	1.00
1:A:962:LYS:NZ	3:A:1302:HOH:O	1.95	0.97
1:B:1036:ASP:OD1	3:B:1301:HOH:O	1.88	0.89
1:B:907:HIS:O	3:B:1302:HOH:O	1.93	0.83
1:B:868:TYR:O	1:B:876:GLY:HA3	1.92	0.70
1:B:846:GLU:OE1	1:B:926:LYS:NZ	2.22	0.67
1:B:845:GLU:OE1	1:B:847:ARG:NH2	2.28	0.66
1:A:868:TYR:O	1:A:876:GLY:HA3	1.96	0.65
1:A:930:GLU:OE2	1:A:991:LYS:NZ	2.32	0.63
1:B:971:ARG:NH2	1:B:1002:PRO:O	2.33	0.61
1:A:918:TYR:HD2	1:A:925:LEU:HD13	1.64	0.60
1:A:1104:GLU:HG2	1:A:1114:PRO:HD3	1.85	0.59
1:B:932:LEU:HD12	1:B:983:LEU:HB2	1.85	0.58
2:B:1201:R6V:C30	2:B:1201:R6V:N16	2.66	0.58
1:B:919:SER:O	1:B:923:ARG:N	2.34	0.57
1:A:971:ARG:NH2	1:A:1002:PRO:O	2.38	0.57
1:A:1080:GLU:HA	1:A:1083:LYS:HG2	1.87	0.55
1:B:1062:MET:HA	1:B:1065:ILE:HG12	1.90	0.54
1:B:989:ARG:NH1	3:B:1306:HOH:O	2.42	0.52
1:A:932:LEU:HD21	1:A:991:LYS:HD2	1.93	0.51
1:B:1104:GLU:OE1	1:B:1122:ARG:NH1	2.33	0.50

*Continued on next page...*



Continued from previous page...

Atom-1	Atom-2	Interatomic distance (Å)	Clash overlap (Å)
1:A:855:LEU:HD11	1:A:865:MET:HB2	1.94	0.50
1:B:857:LYS:HD3	1:B:862:SER:HB3	1.93	0.50
1:A:976:ASP:HB2	1:A:997:LEU:HD12	1.94	0.49
1:A:925:LEU:HD12	1:A:926:LYS:H	1.78	0.49
1:A:861:GLY:C	1:A:885:GLN:OE1	2.52	0.48
1:A:945:LYS:HG3	1:A:946:GLU:OE2	2.12	0.48
1:A:942:GLN:HG3	1:A:943:LYS:HD3	1.97	0.47
1:B:884:LEU:HD23	1:B:884:LEU:HA	1.45	0.47
1:A:862:SER:N	1:A:885:GLN:OE1	2.48	0.47
1:A:1087:ARG:HE	1:A:1106:TRP:HB3	1.80	0.47
1:B:935:GLY:HA2	2:B:1201:R6V:C30	2.44	0.46
1:A:873:ASP:N	1:A:873:ASP:OD1	2.49	0.46
1:A:946:GLU:OE2	1:A:946:GLU:N	2.49	0.46
1:B:1045:TYR:O	1:B:1049:THR:HG23	2.16	0.45
1:B:888:THR:O	1:B:892:LEU:HB2	2.16	0.45
1:B:1053:LYS:H	1:B:1053:LYS:HG3	1.54	0.45
1:A:932:LEU:HD22	1:A:983:LEU:HB2	1.99	0.44
1:B:860:PHE:HD2	1:B:884:LEU:CD2	2.31	0.44
1:A:945:LYS:CG	1:A:946:GLU:OE2	2.66	0.44
1:A:1065:ILE:O	1:A:1069:LYS:HE3	2.17	0.44
1:A:918:TYR:HB3	1:A:925:LEU:HA	2.00	0.43
1:B:861:GLY:HA3	1:B:883:LYS:O	2.17	0.43
1:B:873:ASP:OD1	1:B:873:ASP:N	2.51	0.43
1:B:965:GLU:O	1:B:969:THR:HG23	2.19	0.43
1:A:1070:GLN:HG2	1:A:1071:GLY:H	1.82	0.43
1:B:892:LEU:O	1:B:896:GLU:HG3	2.19	0.42
1:B:1045:TYR:OH	1:B:1060:GLU:HG3	2.20	0.42
1:A:838:GLN:OE1	1:A:838:GLN:HA	2.20	0.41
1:B:920:ALA:N	1:B:921:GLY:HA3	2.34	0.41
1:B:1117:ARG:HB3	1:A:886:HIS:ND1	2.36	0.41
1:B:867:ARG:NH1	1:B:876:GLY:O	2.54	0.40

All (2) symmetry-related close contacts are listed below. The label for Atom-2 includes the symmetry operator and encoded unit-cell translations to be applied.

Atom-1	Atom-2	Interatomic distance (Å)	Clash overlap (Å)
1:B:883:LYS:NZ	1:B:1007:PTR:O3P[2_654]	1.28	0.92
1:B:883:LYS:CE	1:B:1007:PTR:O3P[2_654]	2.02	0.18

## 5.3 Torsion angles [i](#)

### 5.3.1 Protein backbone [i](#)

In the following table, the Percentiles column shows the percent Ramachandran outliers of the chain as a percentile score with respect to all X-ray entries followed by that with respect to entries of similar resolution.

The Analysed column shows the number of residues for which the backbone conformation was analysed, and the total number of residues.

Mol	Chain	Analysed	Favoured	Allowed	Outliers	Percentiles	
1	A	294/308 (96%)	290 (99%)	4 (1%)	0	100	100
1	B	286/308 (93%)	282 (99%)	4 (1%)	0	100	100
All	All	580/616 (94%)	572 (99%)	8 (1%)	0	100	100

There are no Ramachandran outliers to report.

### 5.3.2 Protein sidechains [i](#)

In the following table, the Percentiles column shows the percent sidechain outliers of the chain as a percentile score with respect to all X-ray entries followed by that with respect to entries of similar resolution.

The Analysed column shows the number of residues for which the sidechain conformation was analysed, and the total number of residues.

Mol	Chain	Analysed	Rotameric	Outliers	Percentiles	
1	A	270/280 (96%)	264 (98%)	6 (2%)	52	69
1	B	263/280 (94%)	258 (98%)	5 (2%)	57	73
All	All	533/560 (95%)	522 (98%)	11 (2%)	53	70

All (11) residues with a non-rotameric sidechain are listed below:

Mol	Chain	Res	Type
1	B	857	LYS
1	B	891	HIS
1	B	918	TYR
1	B	944	HIS
1	B	1053	LYS
1	A	885	GLN
1	A	918	TYR
1	A	922	ARG

*Continued on next page...*

Continued from previous page...

Mol	Chain	Res	Type
1	A	943	LYS
1	A	1092	ASP
1	A	1117	ARG

Sometimes sidechains can be flipped to improve hydrogen bonding and reduce clashes. All (1) such sidechains are listed below:

Mol	Chain	Res	Type
1	A	1077	HIS

### 5.3.3 RNA [i](#)

There are no RNA molecules in this entry.

## 5.4 Non-standard residues in protein, DNA, RNA chains [i](#)

2 non-standard protein/DNA/RNA residues are modelled in this entry.

In the following table, the Counts columns list the number of bonds (or angles) for which Mogul statistics could be retrieved, the number of bonds (or angles) that are observed in the model and the number of bonds (or angles) that are defined in the Chemical Component Dictionary. The Link column lists molecule types, if any, to which the group is linked. The Z score for a bond length (or angle) is the number of standard deviations the observed value is removed from the expected value. A bond length (or angle) with  $|Z| > 2$  is considered an outlier worth inspection. RMSZ is the root-mean-square of all Z scores of the bond lengths (or angles).

Mol	Type	Chain	Res	Link	Bond lengths			Bond angles		
					Counts	RMSZ	# Z  > 2	Counts	RMSZ	# Z  > 2
1	PTR	A	1007	1	15,16,17	1.35	1 (6%)	19,22,24	0.61	0
1	PTR	B	1007	1	15,16,17	2.10	4 (26%)	19,22,24	1.03	1 (5%)

In the following table, the Chirals column lists the number of chiral outliers, the number of chiral centers analysed, the number of these observed in the model and the number defined in the Chemical Component Dictionary. Similar counts are reported in the Torsion and Rings columns. '-' means no outliers of that kind were identified.

Mol	Type	Chain	Res	Link	Chirals	Torsions	Rings
1	PTR	A	1007	1	-	1/10/11/13	0/1/1/1
1	PTR	B	1007	1	-	0/10/11/13	0/1/1/1

All (5) bond length outliers are listed below:

Mol	Chain	Res	Type	Atoms	Z	Observed(Å)	Ideal(Å)
1	B	1007	PTR	P-OH	5.02	1.67	1.59
1	B	1007	PTR	P-O1P	4.33	1.64	1.50
1	A	1007	PTR	OH-CZ	-4.28	1.30	1.40
1	B	1007	PTR	OH-CZ	-3.73	1.32	1.40
1	B	1007	PTR	P-O3P	-2.19	1.46	1.54

All (1) bond angle outliers are listed below:

Mol	Chain	Res	Type	Atoms	Z	Observed(°)	Ideal(°)
1	B	1007	PTR	O3P-P-O2P	2.51	117.24	107.64

There are no chirality outliers.

All (1) torsion outliers are listed below:

Mol	Chain	Res	Type	Atoms
1	A	1007	PTR	CZ-OH-P-O1P

There are no ring outliers.

1 monomer is involved in 2 short contacts:

Mol	Chain	Res	Type	Clashes	Symm-Clashes
1	B	1007	PTR	0	2

## 5.5 Carbohydrates [i](#)

There are no monosaccharides in this entry.

## 5.6 Ligand geometry [i](#)

2 ligands are modelled in this entry.

In the following table, the Counts columns list the number of bonds (or angles) for which Mogul statistics could be retrieved, the number of bonds (or angles) that are observed in the model and the number of bonds (or angles) that are defined in the Chemical Component Dictionary. The Link column lists molecule types, if any, to which the group is linked. The Z score for a bond length (or angle) is the number of standard deviations the observed value is removed from the expected value. A bond length (or angle) with  $|Z| > 2$  is considered an outlier worth inspection. RMSZ is the root-mean-square of all Z scores of the bond lengths (or angles).

Mol	Type	Chain	Res	Link	Bond lengths			Bond angles		
					Counts	RMSZ	# Z  > 2	Counts	RMSZ	# Z  > 2

Mol	Type	Chain	Res	Link	Bond lengths			Bond angles		
					Counts	RMSZ	# Z  > 2	Counts	RMSZ	# Z  > 2
2	R6V	A	1201	-	37,41,41	2.12	9 (24%)	38,57,57	1.53	6 (15%)
2	R6V	B	1201	-	37,41,41	2.41	10 (27%)	38,57,57	2.61	11 (28%)

In the following table, the Chirals column lists the number of chiral outliers, the number of chiral centers analysed, the number of these observed in the model and the number defined in the Chemical Component Dictionary. Similar counts are reported in the Torsion and Rings columns. '-' means no outliers of that kind were identified.

Mol	Type	Chain	Res	Link	Chirals	Torsions	Rings
2	R6V	A	1201	-	-	2/14/38/38	0/6/6/6
2	R6V	B	1201	-	-	0/14/38/38	0/6/6/6

All (19) bond length outliers are listed below:

Mol	Chain	Res	Type	Atoms	Z	Observed(Å)	Ideal(Å)
2	B	1201	R6V	C17-N18	7.27	1.51	1.36
2	B	1201	R6V	C09-C05	-6.44	1.37	1.53
2	A	1201	R6V	C09-C05	-6.24	1.37	1.53
2	B	1201	R6V	C06-C05	4.94	1.66	1.53
2	A	1201	R6V	C17-N18	4.80	1.46	1.36
2	A	1201	R6V	C06-C05	4.71	1.66	1.53
2	B	1201	R6V	C19-N18	4.04	1.49	1.40
2	A	1201	R6V	C13-N10	-3.58	1.32	1.35
2	A	1201	R6V	C07-C06	-3.56	1.36	1.51
2	B	1201	R6V	C07-C06	-3.54	1.37	1.51
2	B	1201	R6V	C13-N10	-3.42	1.32	1.35
2	B	1201	R6V	C03-C02	3.29	1.53	1.46
2	B	1201	R6V	C14-C15	3.17	1.53	1.49
2	A	1201	R6V	C14-C15	3.03	1.53	1.49
2	A	1201	R6V	C03-C02	2.89	1.52	1.46
2	A	1201	R6V	C04-N10	-2.74	1.45	1.49
2	A	1201	R6V	C19-N18	2.64	1.46	1.40
2	B	1201	R6V	C04-N10	-2.50	1.45	1.49
2	B	1201	R6V	C33-C32	-2.24	1.37	1.43

All (17) bond angle outliers are listed below:

Mol	Chain	Res	Type	Atoms	Z	Observed(°)	Ideal(°)
2	B	1201	R6V	C14-C15-N16	7.86	123.16	115.50

*Continued on next page...*

Continued from previous page...

Mol	Chain	Res	Type	Atoms	Z	Observed(°)	Ideal(°)
2	B	1201	R6V	C17-N31-C32	6.90	123.11	115.28
2	B	1201	R6V	N31-C17-N16	-6.35	116.19	126.23
2	A	1201	R6V	C17-N31-C32	4.76	120.68	115.28
2	B	1201	R6V	C19-N18-C17	-4.51	116.15	129.23
2	A	1201	R6V	C33-C15-N16	-3.71	118.56	121.95
2	B	1201	R6V	C33-C15-N16	-3.55	118.71	121.95
2	B	1201	R6V	C14-C15-C33	-3.46	118.11	122.27
2	A	1201	R6V	N31-C17-N16	-3.30	121.01	126.23
2	B	1201	R6V	C29-C30-C19	3.27	124.08	120.30
2	B	1201	R6V	C30-C29-C22	-3.23	117.95	121.20
2	B	1201	R6V	C28-C23-C22	-3.12	105.47	112.79
2	A	1201	R6V	C06-C05-C04	-2.47	107.87	112.73
2	A	1201	R6V	C14-C15-N16	2.29	117.73	115.50
2	A	1201	R6V	C28-C23-C22	-2.25	107.52	112.79
2	B	1201	R6V	C28-C23-C24	2.09	113.93	109.56
2	B	1201	R6V	N18-C17-N16	2.09	124.00	116.92

There are no chirality outliers.

All (2) torsion outliers are listed below:

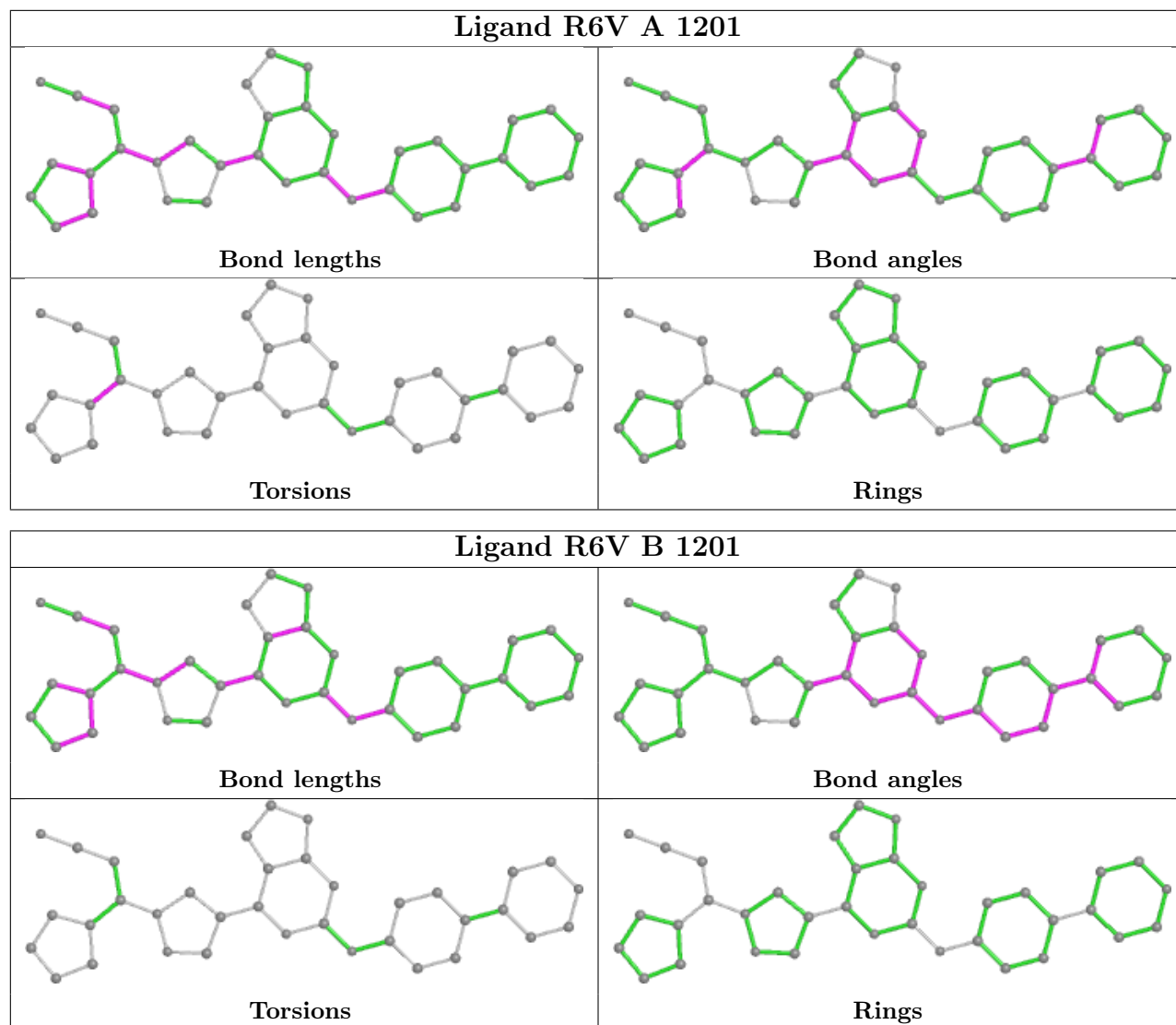
Mol	Chain	Res	Type	Atoms
2	A	1201	R6V	C03-C04-C05-C06
2	A	1201	R6V	N10-C04-C05-C06

There are no ring outliers.

1 monomer is involved in 2 short contacts:

Mol	Chain	Res	Type	Clashes	Symm-Clashes
2	B	1201	R6V	2	0

The following is a two-dimensional graphical depiction of Mogul quality analysis of bond lengths, bond angles, torsion angles, and ring geometry for all instances of the Ligand of Interest. In addition, ligands with molecular weight > 250 and outliers as shown on the validation Tables will also be included. For torsion angles, if less than 5% of the Mogul distribution of torsion angles is within 10 degrees of the torsion angle in question, then that torsion angle is considered an outlier. Any bond that is central to one or more torsion angles identified as an outlier by Mogul will be highlighted in the graph. For rings, the root-mean-square deviation (RMSD) between the ring in question and similar rings identified by Mogul is calculated over all ring torsion angles. If the average RMSD is greater than 60 degrees and the minimal RMSD between the ring in question and any Mogul-identified rings is also greater than 60 degrees, then that ring is considered an outlier. The outliers are highlighted in purple. The color gray indicates Mogul did not find sufficient equivalents in the CSD to analyse the geometry.



## 5.7 Other polymers [\(i\)](#)

There are no such residues in this entry.

## 5.8 Polymer linkage issues [\(i\)](#)

There are no chain breaks in this entry.

## 6 Fit of model and data

### 6.1 Protein, DNA and RNA chains

In the following table, the column labelled ‘#RSRZ > 2’ contains the number (and percentage) of RSRZ outliers, followed by percent RSRZ outliers for the chain as percentile scores relative to all X-ray entries and entries of similar resolution. The OWAB column contains the minimum, median, 95<sup>th</sup> percentile and maximum values of the occupancy-weighted average B-factor per residue. The column labelled ‘Q < 0.9’ lists the number of (and percentage) of residues with an average occupancy less than 0.9.

Mol	Chain	Analysed	<RSRZ>	#RSRZ>2	OWAB(Å <sup>2</sup> )	Q<0.9
1	A	296/308 (96%)	0.64	16 (5%) 25 32	49, 67, 102, 131	0
1	B	288/308 (93%)	0.65	16 (5%) 24 30	42, 67, 111, 129	0
All	All	584/616 (94%)	0.65	32 (5%) 25 31	42, 67, 107, 131	0

All (32) RSRZ outliers are listed below:

Mol	Chain	Res	Type	RSRZ
1	B	1068	ASP	5.5
1	A	921	GLY	5.3
1	A	1014	GLY	4.6
1	A	920	ALA	4.6
1	B	920	ALA	4.5
1	B	922	ARG	4.4
1	A	922	ARG	4.2
1	B	1067	ASN	3.9
1	B	860	PHE	3.8
1	B	921	GLY	3.8
1	B	886	HIS	3.4
1	A	1069	LYS	3.2
1	A	1068	ASP	3.2
1	A	1062	MET	3.1
1	B	844	PHE	3.1
1	B	918	TYR	3.0
1	B	1070	GLN	2.7
1	A	1066	GLY	2.6
1	A	860	PHE	2.5
1	B	1069	LYS	2.4
1	B	873	ASP	2.4
1	B	1131	ALA	2.3
1	A	1053	LYS	2.3
1	B	967	LEU	2.3

*Continued on next page...*



Continued from previous page...

Mol	Chain	Res	Type	RSRZ
1	B	845	GLU	2.2
1	A	877	GLU	2.2
1	A	935	GLY	2.2
1	A	918	TYR	2.1
1	A	934	TYR	2.1
1	B	858	GLY	2.1
1	A	932	LEU	2.1
1	A	893	ARG	2.0

## 6.2 Non-standard residues in protein, DNA, RNA chains [i](#)

In the following table, the Atoms column lists the number of modelled atoms in the group and the number defined in the chemical component dictionary. The B-factors column lists the minimum, median, 95<sup>th</sup> percentile and maximum values of B factors of atoms in the group. The column labelled 'Q< 0.9' lists the number of atoms with occupancy less than 0.9.

Mol	Type	Chain	Res	Atoms	RSCC	RSR	B-factors(Å <sup>2</sup> )	Q<0.9
1	PTR	B	1007	16/17	0.85	0.16	56,70,124,125	0
1	PTR	A	1007	16/17	0.91	0.13	55,81,114,119	0

## 6.3 Carbohydrates [i](#)

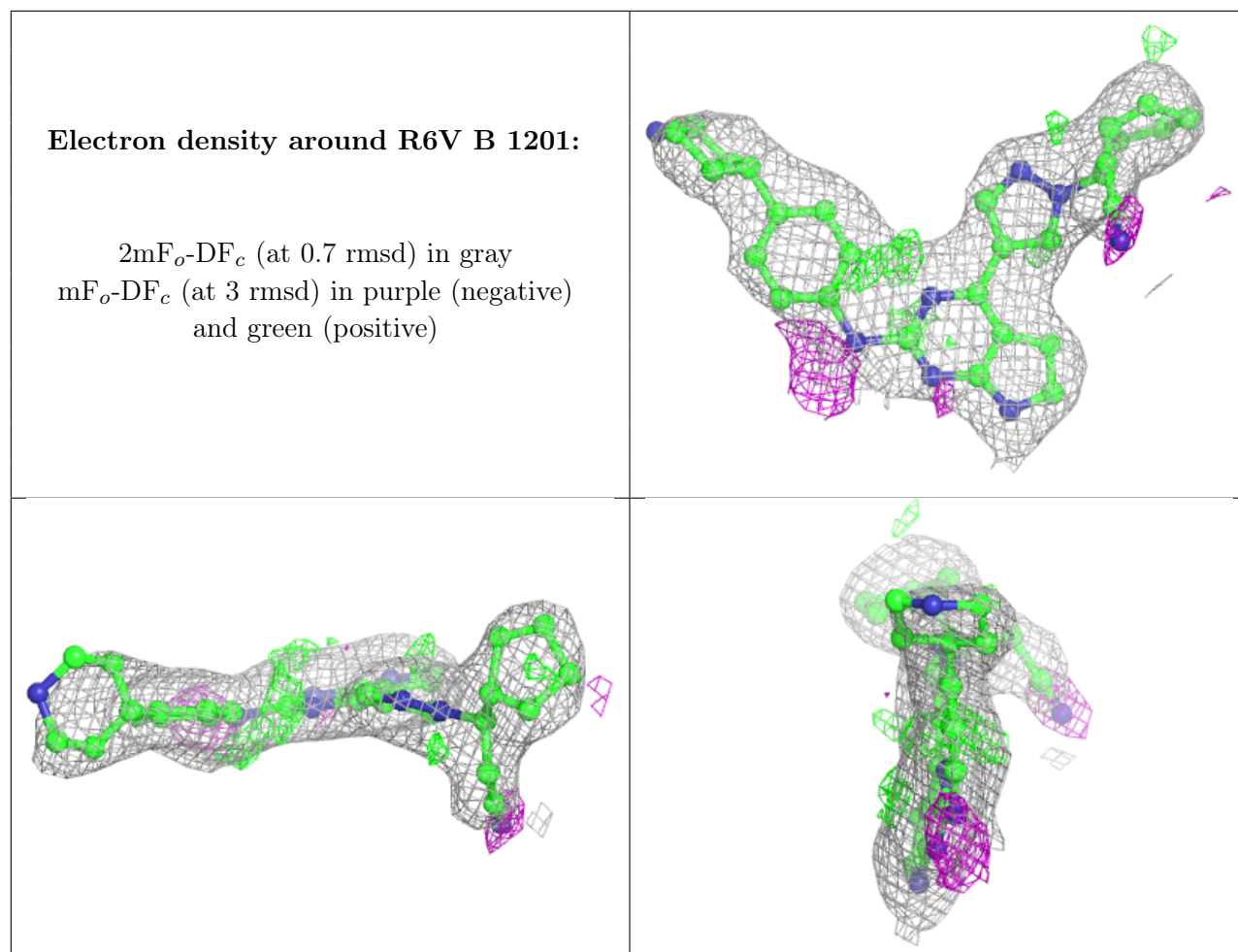
There are no monosaccharides in this entry.

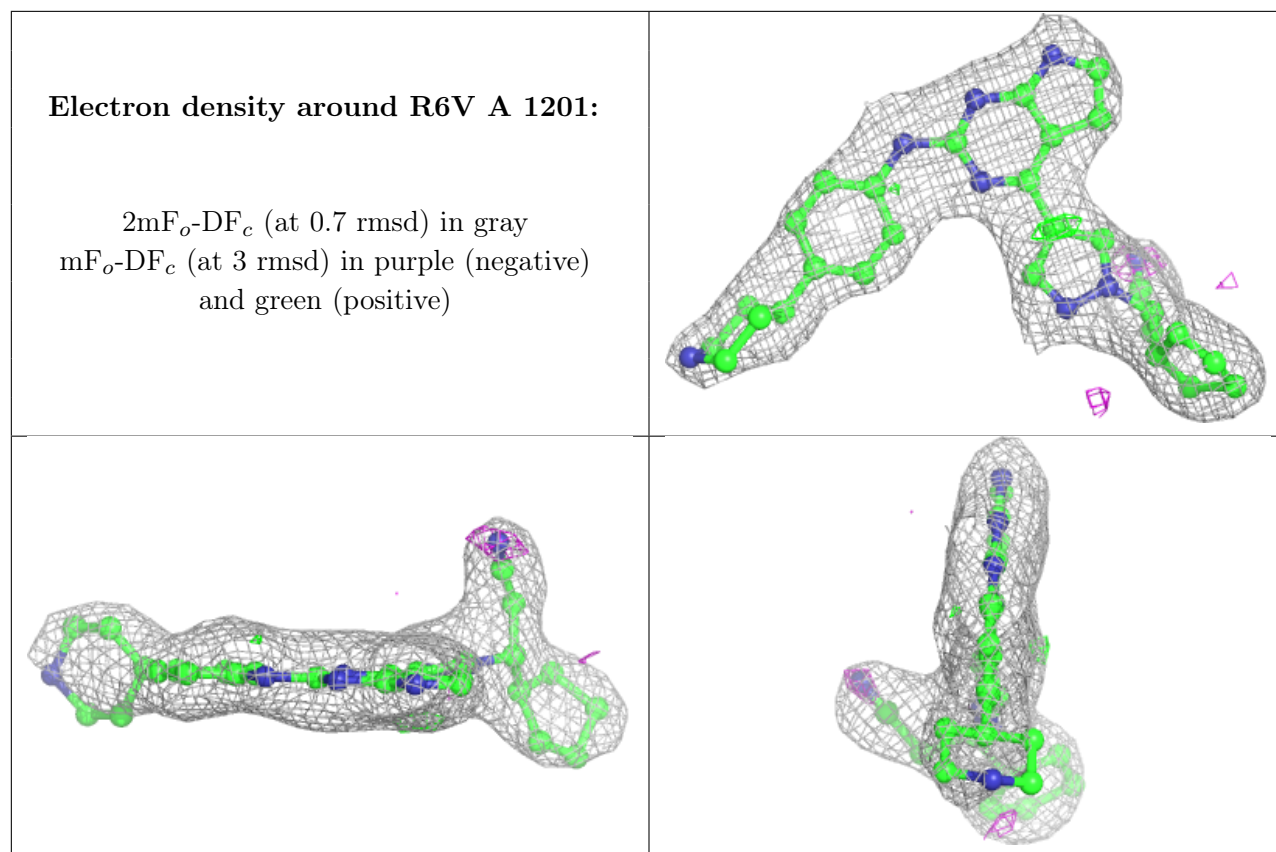
## 6.4 Ligands [i](#)

In the following table, the Atoms column lists the number of modelled atoms in the group and the number defined in the chemical component dictionary. The B-factors column lists the minimum, median, 95<sup>th</sup> percentile and maximum values of B factors of atoms in the group. The column labelled 'Q< 0.9' lists the number of atoms with occupancy less than 0.9.

Mol	Type	Chain	Res	Atoms	RSCC	RSR	B-factors(Å <sup>2</sup> )	Q<0.9
2	R6V	B	1201	36/36	0.93	0.19	39,53,74,94	0
2	R6V	A	1201	36/36	0.96	0.22	47,55,81,99	0

The following is a graphical depiction of the model fit to experimental electron density of all instances of the Ligand of Interest. In addition, ligands with molecular weight > 250 and outliers as shown on the geometry validation Tables will also be included. Each fit is shown from different orientation to approximate a three-dimensional view.





## 6.5 Other polymers [i](#)

There are no such residues in this entry.