



Full wwPDB X-ray Structure Validation Report

Sep 24, 2024 – 04:13 PM EDT

PDB ID : 8VZC
Title : Crystal Structure of 2-Hydroxyacyl-CoA Lyase/Synthase ApbHACS from Alphaproteobacteria bacterium in the Complex with THDP, Formyl-CoA, and ADP
Authors : Gade, P.; Kim, Y.; Endres, M.; Lee, S.; Yoshikuni, Y.; Gonzalez, R.; Michalska, K.; Joachimiak, A.
Deposited on : 2024-02-11
Resolution : 1.72 Å(reported)

This is a Full wwPDB X-ray Structure Validation Report for a publicly released PDB entry.

We welcome your comments at validation@mail.wwpdb.org

A user guide is available at

<https://www.wwpdb.org/validation/2017/XrayValidationReportHelp>

with specific help available everywhere you see the  symbol.

The types of validation reports are described at

<http://www.wwpdb.org/validation/2017/FAQs#types>.

The following versions of software and data (see [references](#) ①) were used in the production of this report:

MolProbity : 4.02b-467
Mogul : 2022.3.0, CSD as543be (2022)
Xtrriage (Phenix) : 1.20.1
EDS : 3.0
buster-report : 1.1.7 (2018)
Percentile statistics : 20231227.v01 (using entries in the PDB archive December 27th 2023)
CCP4 : 9.0.002 (Gargrove)
Density-Fitness : 1.0.11
Ideal geometry (proteins) : Engh & Huber (2001)
Ideal geometry (DNA, RNA) : Parkinson et al. (1996)
Validation Pipeline (wwPDB-VP) : 2.38.3

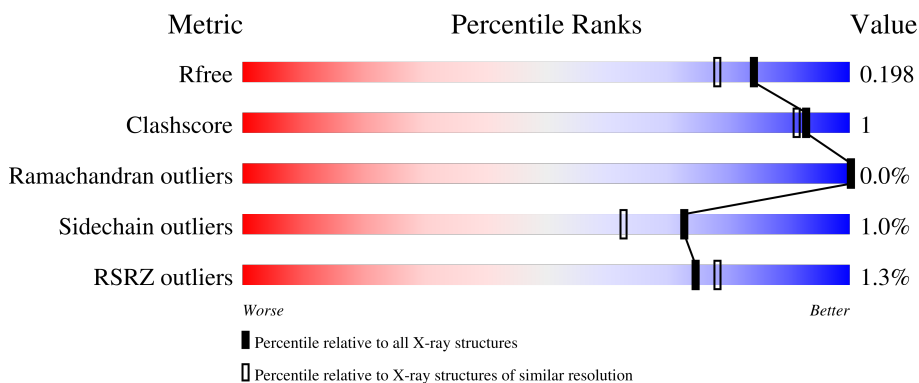
1 Overall quality at a glance

The following experimental techniques were used to determine the structure:

X-RAY DIFFRACTION

The reported resolution of this entry is 1.72 Å.

Percentile scores (ranging between 0-100) for global validation metrics of the entry are shown in the following graphic. The table shows the number of entries on which the scores are based.



Metric	Whole archive (#Entries)	Similar resolution (#Entries, resolution range(Å))
R_{free}	164625	7106 (1.74-1.70)
Clashscore	180529	7746 (1.74-1.70)
Ramachandran outliers	177936	7654 (1.74-1.70)
Sidechain outliers	177891	7654 (1.74-1.70)
RSRZ outliers	164620	7104 (1.74-1.70)

The table below summarises the geometric issues observed across the polymeric chains and their fit to the electron density. The red, orange, yellow and green segments of the lower bar indicate the fraction of residues that contain outliers for ≥ 3 , 2, 1 and 0 types of geometric quality criteria respectively. A grey segment represents the fraction of residues that are not modelled. The numeric value for each fraction is indicated below the corresponding segment, with a dot representing fractions $\leq 5\%$. The upper red bar (where present) indicates the fraction of residues that have poor fit to the electron density. The numeric value is given above the bar.

Mol	Chain	Length	Quality of chain
1	A	557	 96%
1	B	557	 96%
1	C	557	 97%
1	D	557	 97%

2 Entry composition [i](#)

There are 9 unique types of molecules in this entry. The entry contains 19329 atoms, of which 0 are hydrogens and 0 are deuteriums.

In the tables below, the ZeroOcc column contains the number of atoms modelled with zero occupancy, the AltConf column contains the number of residues with at least one atom in alternate conformation and the Trace column contains the number of residues modelled with at most 2 atoms.

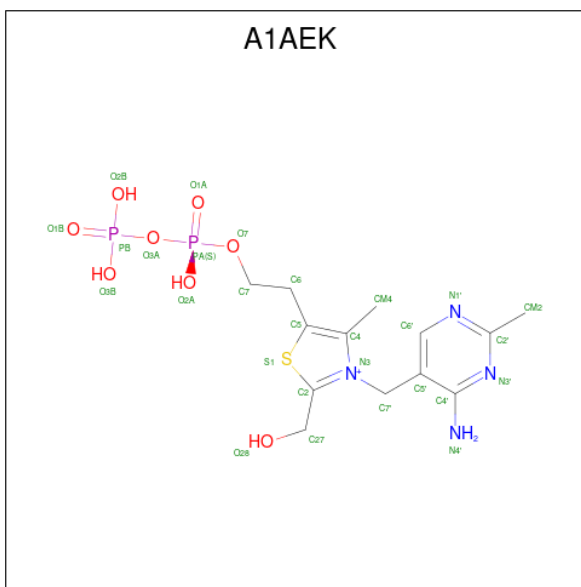
- Molecule 1 is a protein called Oxalyl-CoA decarboxylase.

Mol	Chain	Residues	Atoms					ZeroOcc	AltConf	Trace
			Total	C	N	O	S			
1	A	554	4191	2643	755	769	24	0	4	0
1	B	555	4219	2659	763	773	24	0	6	0
1	C	554	4169	2632	749	765	23	0	1	0
1	D	554	4188	2643	754	767	24	0	3	0

There are 12 discrepancies between the modelled and reference sequences:

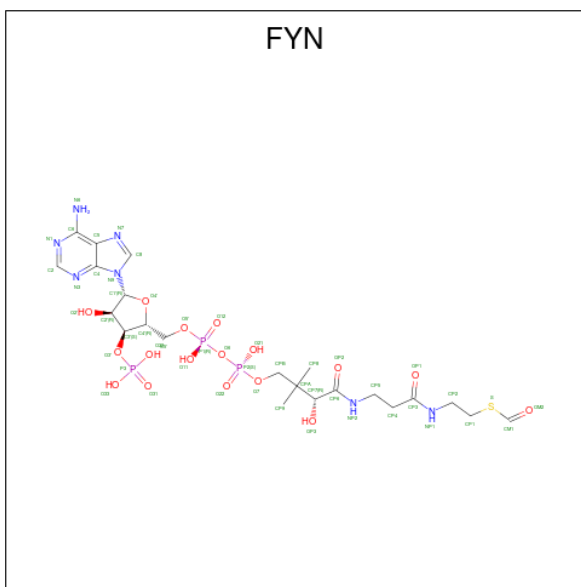
Chain	Residue	Modelled	Actual	Comment	Reference
A	-2	SER	-	expression tag	UNP A0A3C0TX30
A	-1	ASN	-	expression tag	UNP A0A3C0TX30
A	0	ALA	-	expression tag	UNP A0A3C0TX30
B	-2	SER	-	expression tag	UNP A0A3C0TX30
B	-1	ASN	-	expression tag	UNP A0A3C0TX30
B	0	ALA	-	expression tag	UNP A0A3C0TX30
C	-2	SER	-	expression tag	UNP A0A3C0TX30
C	-1	ASN	-	expression tag	UNP A0A3C0TX30
C	0	ALA	-	expression tag	UNP A0A3C0TX30
D	-2	SER	-	expression tag	UNP A0A3C0TX30
D	-1	ASN	-	expression tag	UNP A0A3C0TX30
D	0	ALA	-	expression tag	UNP A0A3C0TX30

- Molecule 2 is 3-[(4-amino-2-methylpyrimidin-5-yl)methyl]-2-(hydroxymethyl)-5-(2-[(S)-hydroxy(phosphonooxy)phosphoryl]oxy)ethyl)-4-methyl-1,3-thiazol-3-ium (three-letter code: A1AEK) (formula: C₁₃H₂₁N₄O₈P₂S) (labeled as "Ligand of Interest" by depositor).



Mol	Chain	Residues	Atoms					ZeroOcc	AltConf		
			Total	C	N	O	P			S	
2	A	1	Total	26	12	4	7	2	1	0	0
2	B	1	Total	28	13	4	8	2	1	0	0
2	C	1	Total	26	12	4	7	2	1	0	0
2	D	1	Total	28	13	4	8	2	1	0	0

- Molecule 3 is S-{(9R,13S,15R)-17-[(2R,3S,4R,5R)-5-(6-AMINO-9H-PURIN-9-YL)-4-HYDROXY-3-(PHOSPHONOXY)TETRAHYDROFURAN-2-YL]-9,13,15-TRIHYDROXY-10,10-DIMETHYL-13,15-DIOXIDO-4,8-DIOXO-12,14,16-TRIOXA-3,7-DIAZA-13,15-DIPHOSPHAHEPTADEC-1-YL} THIOFORMATE (three-letter code: FYN) (formula: C₂₂H₃₆N₇O₁₇P₃S) (labeled as "Ligand of Interest" by depositor).

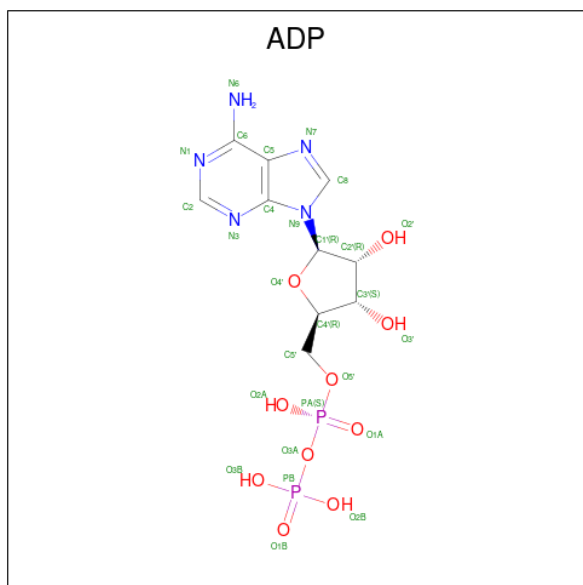


Mol	Chain	Residues	Atoms					ZeroOcc	AltConf	
			Total	C	N	O	P			S
3	A	1	50	22	7	17	3	1	0	0
3	B	1	48	21	7	16	3	1	0	0
3	C	1	50	22	7	17	3	1	0	0
3	D	1	48	21	7	16	3	1	0	0

- Molecule 4 is MAGNESIUM ION (three-letter code: MG) (formula: Mg).

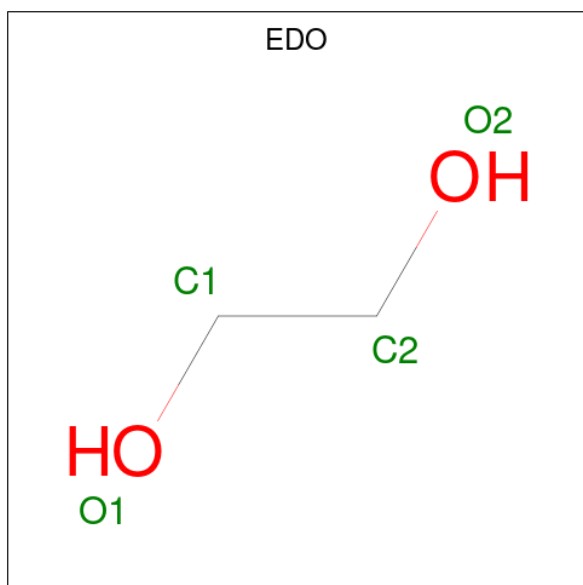
Mol	Chain	Residues	Atoms		ZeroOcc	AltConf
			Total	Mg		
4	A	1	1	1	0	0
4	B	1	1	1	0	0
4	C	1	1	1	0	0
4	D	1	1	1	0	0

- Molecule 5 is ADENOSINE-5'-DIPHOSPHATE (three-letter code: ADP) (formula: $C_{10}H_{15}N_5O_{10}P_2$) (labeled as "Ligand of Interest" by depositor).



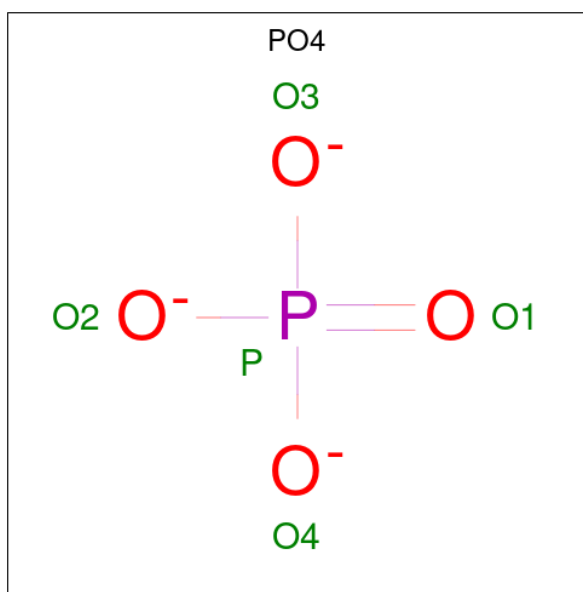
Mol	Chain	Residues	Atoms					ZeroOcc	AltConf
			Total	C	N	O	P		
5	A	1	Total	C	N	O	P	0	0
			27	10	5	10	2		
5	B	1	Total	C	N	O	P	0	0
			27	10	5	10	2		
5	C	1	Total	C	N	O	P	0	0
			27	10	5	10	2		
5	D	1	Total	C	N	O	P	0	0
			27	10	5	10	2		

- Molecule 6 is 1,2-ETHANEDIOL (three-letter code: EDO) (formula: $C_2H_6O_2$).



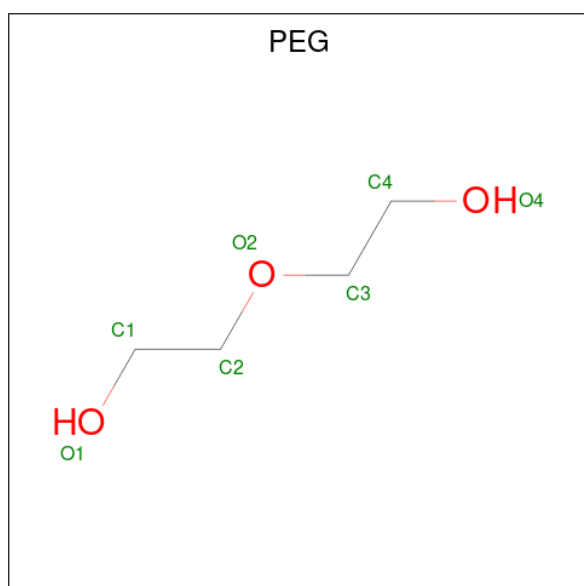
Mol	Chain	Residues	Atoms	ZeroOcc	AltConf
6	A	1	Total C O 4 2 2	0	0
6	A	1	Total C O 4 2 2	0	0
6	A	1	Total C O 8 4 4	0	1
6	A	1	Total C O 4 2 2	0	0
6	A	1	Total C O 4 2 2	0	0
6	B	1	Total C O 4 2 2	0	0
6	B	1	Total C O 4 2 2	0	0
6	C	1	Total C O 4 2 2	0	0
6	C	1	Total C O 8 4 4	0	1
6	C	1	Total C O 4 2 2	0	0
6	D	1	Total C O 4 2 2	0	0
6	D	1	Total C O 4 2 2	0	0

- Molecule 7 is PHOSPHATE ION (three-letter code: PO4) (formula: O₄P).



Mol	Chain	Residues	Atoms	ZeroOcc	AltConf
7	A	1	Total O P 5 4 1	0	0
7	B	1	Total O P 5 4 1	0	0
7	C	1	Total O P 5 4 1	0	0
7	D	1	Total O P 5 4 1	0	0

- Molecule 8 is DI(HYDROXYETHYL)ETHER (three-letter code: PEG) (formula: C₄H₁₀O₃).



Mol	Chain	Residues	Atoms	ZeroOcc	AltConf
8	C	1	Total C O 7 4 3	0	0

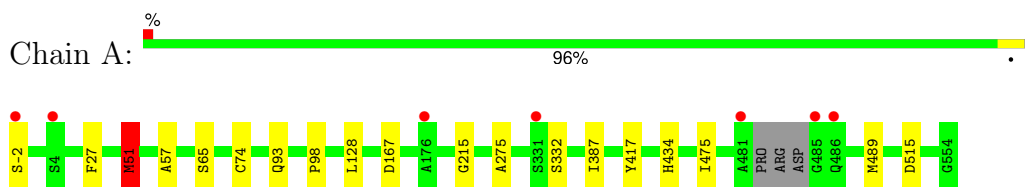
- Molecule 9 is water.

Mol	Chain	Residues	Atoms	ZeroOcc	AltConf
9	A	551	Total O 551 551	0	0
9	B	489	Total O 489 489	0	0
9	C	522	Total O 522 522	0	0
9	D	501	Total O 501 501	0	0

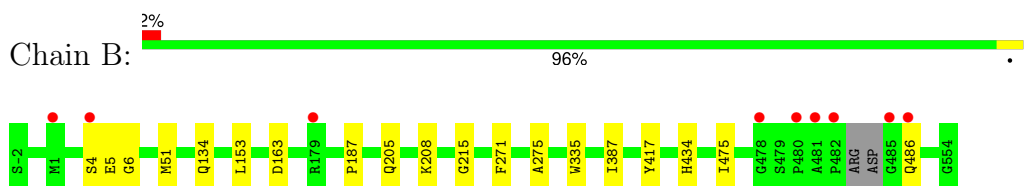
3 Residue-property plots [i](#)

These plots are drawn for all protein, RNA, DNA and oligosaccharide chains in the entry. The first graphic for a chain summarises the proportions of the various outlier classes displayed in the second graphic. The second graphic shows the sequence view annotated by issues in geometry and electron density. Residues are color-coded according to the number of geometric quality criteria for which they contain at least one outlier: green = 0, yellow = 1, orange = 2 and red = 3 or more. A red dot above a residue indicates a poor fit to the electron density ($RSRZ > 2$). Stretches of 2 or more consecutive residues without any outlier are shown as a green connector. Residues present in the sample, but not in the model, are shown in grey.

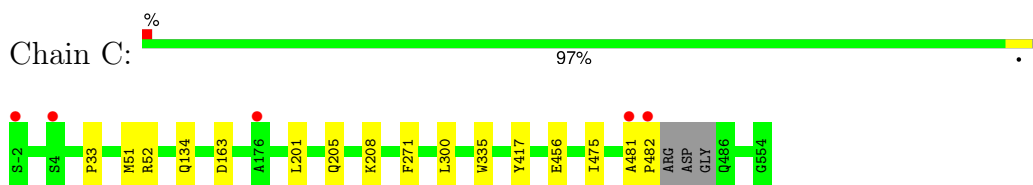
- Molecule 1: Oxalyl-CoA decarboxylase



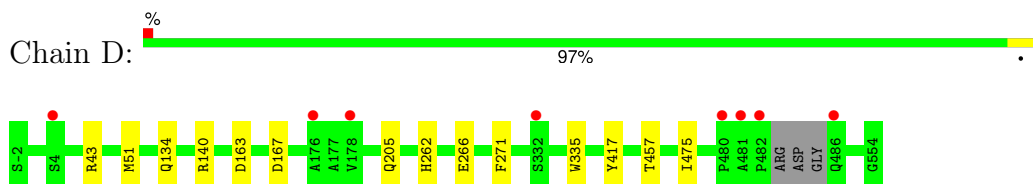
- Molecule 1: Oxalyl-CoA decarboxylase



- Molecule 1: Oxalyl-CoA decarboxylase



- Molecule 1: Oxalyl-CoA decarboxylase



4 Data and refinement statistics

Property	Value	Source
Space group	P 1	Depositor
Cell constants a, b, c, α , β , γ	69.08Å 102.44Å 103.98Å 113.83° 96.81° 105.45°	Depositor
Resolution (Å)	38.63 – 1.72 38.63 – 1.72	Depositor EDS
% Data completeness (in resolution range)	92.2 (38.63-1.72) 92.2 (38.63-1.72)	Depositor EDS
R_{merge}	0.07	Depositor
R_{sym}	(Not available)	Depositor
$\langle I/\sigma(I) \rangle$ ¹	1.30 (at 1.50Å)	Xtrriage
Refinement program	PHENIX 1.20.1_4487	Depositor
R, R_{free}	0.162 , 0.198 0.163 , 0.198	Depositor DCC
R_{free} test set	12678 reflections (4.88%)	wwPDB-VP
Wilson B-factor (Å ²)	19.2	Xtrriage
Anisotropy	0.731	Xtrriage
Bulk solvent k_{sol} (e/Å ³), B_{sol} (Å ²)	0.39 , 48.0	EDS
L-test for twinning ²	$\langle L \rangle = 0.51$, $\langle L^2 \rangle = 0.35$	Xtrriage
Estimated twinning fraction	No twinning to report.	Xtrriage
F_o, F_c correlation	0.96	EDS
Total number of atoms	19329	wwPDB-VP
Average B, all atoms (Å ²)	21.0	wwPDB-VP

Xtrriage's analysis on translational NCS is as follows: *The largest off-origin peak in the Patterson function is 4.76% of the height of the origin peak. No significant pseudotranslation is detected.*

¹Intensities estimated from amplitudes.

²Theoretical values of $\langle |L| \rangle$, $\langle L^2 \rangle$ for acentric reflections are 0.5, 0.333 respectively for untwinned datasets, and 0.375, 0.2 for perfectly twinned datasets.

5 Model quality [i](#)

5.1 Standard geometry [i](#)

Bond lengths and bond angles in the following residue types are not validated in this section: ADP, FYN, EDO, PO4, PEG, A1AEK, MG

The Z score for a bond length (or angle) is the number of standard deviations the observed value is removed from the expected value. A bond length (or angle) with $|Z| > 5$ is considered an outlier worth inspection. RMSZ is the root-mean-square of all Z scores of the bond lengths (or angles).

Mol	Chain	Bond lengths		Bond angles	
		RMSZ	# Z >5	RMSZ	# Z >5
1	A	0.56	0/4283	0.69	1/5811 (0.0%)
1	B	0.52	0/4312	0.70	1/5850 (0.0%)
1	C	0.53	0/4262	0.67	1/5786 (0.0%)
1	D	0.51	0/4281	0.67	0/5811
All	All	0.53	0/17138	0.68	3/23258 (0.0%)

Chiral center outliers are detected by calculating the chiral volume of a chiral center and verifying if the center is modelled as a planar moiety or with the opposite hand. A planarity outlier is detected by checking planarity of atoms in a peptide group, atoms in a mainchain group or atoms of a sidechain that are expected to be planar.

Mol	Chain	#Chirality outliers	#Planarity outliers
1	D	0	1

There are no bond length outliers.

All (3) bond angle outliers are listed below:

Mol	Chain	Res	Type	Atoms	Z	Observed(°)	Ideal(°)
1	B	51	MET	CG-SD-CE	5.47	108.96	100.20
1	C	51	MET	CA-CB-CG	-5.44	104.05	113.30
1	A	51	MET	CG-SD-CE	5.27	108.64	100.20

There are no chirality outliers.

All (1) planarity outliers are listed below:

Mol	Chain	Res	Type	Group
1	D	140	ARG	Sidechain

5.2 Too-close contacts

In the following table, the Non-H and H(model) columns list the number of non-hydrogen atoms and hydrogen atoms in the chain respectively. The H(added) column lists the number of hydrogen atoms added and optimized by MolProbity. The Clashes column lists the number of clashes within the asymmetric unit, whereas Symm-Clashes lists symmetry-related clashes.

Mol	Chain	Non-H	H(model)	H(added)	Clashes	Symm-Clashes
1	A	4191	0	4157	8	0
1	B	4219	0	4184	8	0
1	C	4169	0	4137	8	0
1	D	4188	0	4158	8	0
2	A	26	0	0	5	0
2	B	28	0	0	4	0
2	C	26	0	0	4	0
2	D	28	0	0	5	0
3	A	50	0	31	3	0
3	B	48	0	31	2	0
3	C	50	0	32	1	0
3	D	48	0	31	3	0
4	A	1	0	0	0	0
4	B	1	0	0	0	0
4	C	1	0	0	0	0
4	D	1	0	0	0	0
5	A	27	0	12	0	0
5	B	27	0	12	0	0
5	C	27	0	12	0	0
5	D	27	0	12	0	0
6	A	24	0	36	0	0
6	B	8	0	12	0	0
6	C	16	0	24	0	0
6	D	8	0	12	0	0
7	A	5	0	0	0	0
7	B	5	0	0	1	0
7	C	5	0	0	1	0
7	D	5	0	0	0	0
8	C	7	0	10	0	0
9	A	551	0	0	1	0
9	B	489	0	0	0	0
9	C	522	0	0	0	0
9	D	501	0	0	2	0
All	All	19329	0	16903	48	0

The all-atom clashscore is defined as the number of clashes found per 1000 atoms (including hydrogen atoms). The all-atom clashscore for this structure is 1.

All (48) close contacts within the same asymmetric unit are listed below, sorted by their clash magnitude.

Atom-1	Atom-2	Interatomic distance (Å)	Clash overlap (Å)
2:A:601:A1AEK:C2	3:A:602:FYN:CM1	1.77	1.60
2:D:601:A1AEK:C2	2:D:601:A1AEK:C27	1.78	1.60
2:A:601:A1AEK:C5	2:A:601:A1AEK:S1	2.02	1.47
2:C:601:A1AEK:S1	2:C:601:A1AEK:C5	2.17	1.31
2:B:601:A1AEK:O28	2:B:601:A1AEK:C27	1.89	1.21
3:A:602:FYN:CM1	3:A:602:FYN:OM2	2.02	1.07
2:C:601:A1AEK:S1	2:C:601:A1AEK:C6	2.49	1.00
2:A:601:A1AEK:S1	2:A:601:A1AEK:C6	2.50	0.97
2:D:601:A1AEK:C27	2:D:601:A1AEK:O28	2.16	0.92
2:D:601:A1AEK:C27	3:D:602:FYN:HP11	2.08	0.82
3:D:602:FYN:S	9:D:795:HOH:O	2.53	0.66
2:B:601:A1AEK:C27	3:B:602:FYN:HP11	2.29	0.63
1:A:51:MET:HG3	1:A:57:ALA:HB2	1.83	0.61
1:C:475:ILE:HG23	2:C:601:A1AEK:C5	2.38	0.54
1:A:387:ILE:HD11	1:A:434:HIS:ND1	2.23	0.53
1:D:475:ILE:HG23	2:D:601:A1AEK:C5	2.39	0.52
1:A:475:ILE:HG23	2:A:601:A1AEK:C5	2.40	0.52
2:C:601:A1AEK:C2	3:C:602:FYN:HP11	2.40	0.51
1:C:134:GLN:HA	1:C:163:ASP:HB3	1.92	0.51
1:C:208:LYS:HD3	7:C:609:PO4:O4	2.12	0.50
1:A:434:HIS:HD2	9:A:1175:HOH:O	1.95	0.50
1:D:205[A]:GLN:HG2	1:D:335:TRP:CG	2.47	0.49
1:C:205[A]:GLN:HG2	1:C:335:TRP:CD2	2.47	0.49
1:D:43:ARG:NH1	9:D:704:HOH:O	2.44	0.49
1:A:215:GLY:HA3	1:A:275:ALA:HB2	1.94	0.49
1:B:215:GLY:HA3	1:B:275:ALA:HB2	1.96	0.48
1:B:387:ILE:HD11	1:B:434:HIS:ND1	2.30	0.47
1:B:205:GLN:HG2	1:B:335:TRP:CG	2.51	0.46
1:B:475:ILE:HG23	2:B:601:A1AEK:C5	2.46	0.46
1:B:134:GLN:HA	1:B:163:ASP:HB3	1.97	0.45
1:A:93[A]:GLN:HG2	1:A:128:LEU:O	2.15	0.45
1:D:205[B]:GLN:HG3	1:D:335:TRP:CD1	2.52	0.45
1:D:262:HIS:CE1	1:D:266:GLU:HG3	2.53	0.44
1:C:201:LEU:O	1:C:205[A]:GLN:HG3	2.18	0.43
1:B:208:LYS:HD3	7:B:607:PO4:O2	2.18	0.43
1:B:153:LEU:HG	1:B:187:PRO:HG3	2.00	0.43
1:D:51:MET:HG2	1:D:457:THR:HG21	2.02	0.42
1:C:300:LEU:O	1:C:300:LEU:HD23	2.20	0.42
2:D:601:A1AEK:C27	3:D:602:FYN:CP1	2.89	0.42
2:A:601:A1AEK:C2	3:A:602:FYN:S	2.99	0.42

Continued on next page...

Continued from previous page...

Atom-1	Atom-2	Interatomic distance (Å)	Clash overlap (Å)
1:C:52:ARG:HD3	1:C:456:GLU:OE1	2.21	0.41
1:C:481:ALA:HA	1:C:482:PRO:HD3	1.95	0.41
1:D:134:GLN:HA	1:D:163:ASP:HB3	2.01	0.41
1:A:27:PHE:O	1:A:74:CYS:HA	2.21	0.41
1:D:205[A]:GLN:HG2	1:D:335:TRP:CD2	2.56	0.40
1:A:65:SER:HB3	1:A:98:PRO:HG2	2.01	0.40
1:B:4:SER:O	1:B:6:GLY:N	2.54	0.40
2:B:601:A1AEK:C27	3:B:602:FYN:CP1	2.99	0.40

There are no symmetry-related clashes.

5.3 Torsion angles [i](#)

5.3.1 Protein backbone [i](#)

In the following table, the Percentiles column shows the percent Ramachandran outliers of the chain as a percentile score with respect to all X-ray entries followed by that with respect to entries of similar resolution.

The Analysed column shows the number of residues for which the backbone conformation was analysed, and the total number of residues.

Mol	Chain	Analysed	Favoured	Allowed	Outliers	Percentiles	
1	A	554/557 (100%)	543 (98%)	11 (2%)	0	100	100
1	B	557/557 (100%)	545 (98%)	11 (2%)	1 (0%)	44	29
1	C	551/557 (99%)	542 (98%)	9 (2%)	0	100	100
1	D	553/557 (99%)	544 (98%)	9 (2%)	0	100	100
All	All	2215/2228 (99%)	2174 (98%)	40 (2%)	1 (0%)	100	100

All (1) Ramachandran outliers are listed below:

Mol	Chain	Res	Type
1	B	5	GLU

5.3.2 Protein sidechains [i](#)

In the following table, the Percentiles column shows the percent sidechain outliers of the chain as a percentile score with respect to all X-ray entries followed by that with respect to entries of similar resolution.

The Analysed column shows the number of residues for which the sidechain conformation was analysed, and the total number of residues.

Mol	Chain	Analysed	Rotameric	Outliers	Percentiles	
1	A	415/414 (100%)	408 (98%)	7 (2%)	56	40
1	B	418/414 (101%)	415 (99%)	3 (1%)	81	74
1	C	413/414 (100%)	410 (99%)	3 (1%)	81	74
1	D	415/414 (100%)	412 (99%)	3 (1%)	81	74
All	All	1661/1656 (100%)	1645 (99%)	16 (1%)	73	63

All (16) residues with a non-rotameric sidechain are listed below:

Mol	Chain	Res	Type
1	A	-2	SER
1	A	51	MET
1	A	167	ASP
1	A	332	SER
1	A	417	TYR
1	A	489	MET
1	A	515	ASP
1	B	271	PHE
1	B	417	TYR
1	B	486	GLN
1	C	33	PRO
1	C	271	PHE
1	C	417	TYR
1	D	167	ASP
1	D	271	PHE
1	D	417	TYR

Sometimes sidechains can be flipped to improve hydrogen bonding and reduce clashes. There are no such sidechains identified.

5.3.3 RNA [i](#)

There are no RNA molecules in this entry.

5.4 Non-standard residues in protein, DNA, RNA chains [i](#)

There are no non-standard protein/DNA/RNA residues in this entry.

5.5 Carbohydrates [i](#)

There are no oligosaccharides in this entry.

5.6 Ligand geometry [i](#)

Of 35 ligands modelled in this entry, 4 are monoatomic - leaving 31 for Mogul analysis.

In the following table, the Counts columns list the number of bonds (or angles) for which Mogul statistics could be retrieved, the number of bonds (or angles) that are observed in the model and the number of bonds (or angles) that are defined in the Chemical Component Dictionary. The Link column lists molecule types, if any, to which the group is linked. The Z score for a bond length (or angle) is the number of standard deviations the observed value is removed from the expected value. A bond length (or angle) with $|Z| > 2$ is considered an outlier worth inspection. RMSZ is the root-mean-square of all Z scores of the bond lengths (or angles).

Mol	Type	Chain	Res	Link	Bond lengths			Bond angles		
					Counts	RMSZ	# Z > 2	Counts	RMSZ	# Z > 2
6	EDO	C	608	-	3,3,3	0.50	0	2,2,2	0.35	0
3	FYN	B	602	-	43,50,52	0.94	2 (4%)	56,75,77	2.18	10 (17%)
2	A1AEK	A	601	4	23,27,29	2.51	4 (17%)	30,40,43	3.26	11 (36%)
5	ADP	C	604	-	24,29,29	1.11	1 (4%)	29,45,45	1.39	3 (10%)
3	FYN	C	602	-	45,52,52	0.98	3 (6%)	56,77,77	1.22	3 (5%)
6	EDO	B	605	-	3,3,3	0.52	0	2,2,2	0.45	0
6	EDO	D	606	-	3,3,3	0.46	0	2,2,2	0.36	0
2	A1AEK	C	601	4	23,27,29	6.67	6 (26%)	30,40,43	3.52	14 (46%)
6	EDO	B	606	-	3,3,3	0.35	0	2,2,2	0.87	0
6	EDO	A	605	-	3,3,3	0.59	0	2,2,2	0.18	0
6	EDO	A	609	-	3,3,3	0.43	0	2,2,2	0.41	0
5	ADP	B	604	-	24,29,29	0.94	1 (4%)	29,45,45	1.42	5 (17%)
6	EDO	D	605	-	3,3,3	0.50	0	2,2,2	0.23	0
8	PEG	C	605	-	6,6,6	0.17	0	5,5,5	0.12	0
6	EDO	A	607[A]	-	3,3,3	0.48	0	2,2,2	0.32	0
6	EDO	C	606	-	3,3,3	0.44	0	2,2,2	0.73	0
6	EDO	C	607[A]	-	3,3,3	0.62	0	2,2,2	0.42	0
7	PO4	B	607	-	4,4,4	0.80	0	6,6,6	0.51	0
6	EDO	A	606	-	3,3,3	0.43	0	2,2,2	0.42	0
2	A1AEK	B	601	4	26,29,29	4.55	5 (19%)	30,43,43	3.47	10 (33%)
5	ADP	A	604	-	24,29,29	1.04	1 (4%)	29,45,45	1.53	5 (17%)
5	ADP	D	604	-	24,29,29	0.92	1 (4%)	29,45,45	1.23	2 (6%)
2	A1AEK	D	601	4	26,29,29	5.51	6 (23%)	30,43,43	3.37	11 (36%)
3	FYN	A	602	-	45,52,52	0.81	1 (2%)	56,77,77	1.48	6 (10%)
6	EDO	A	608	-	3,3,3	0.38	0	2,2,2	0.44	0

Mol	Type	Chain	Res	Link	Bond lengths			Bond angles		
					Counts	RMSZ	# Z > 2	Counts	RMSZ	# Z > 2
3	FYN	D	602	-	43,50,52	0.86	2 (4%)	56,75,77	2.41	10 (17%)
6	EDO	A	607[B]	-	3,3,3	0.43	0	2,2,2	0.38	0
7	PO4	C	609	-	4,4,4	0.91	0	6,6,6	0.52	0
6	EDO	C	607[B]	-	3,3,3	0.59	0	2,2,2	0.34	0
7	PO4	D	607	-	4,4,4	0.96	0	6,6,6	0.40	0
7	PO4	A	610	-	4,4,4	0.91	0	6,6,6	0.48	0

In the following table, the Chirals column lists the number of chiral outliers, the number of chiral centers analysed, the number of these observed in the model and the number defined in the Chemical Component Dictionary. Similar counts are reported in the Torsion and Rings columns. '-' means no outliers of that kind were identified.

Mol	Type	Chain	Res	Link	Chirals	Torsions	Rings
6	EDO	C	608	-	-	1/1/1/1	-
3	FYN	B	602	-	-	5/44/64/66	0/3/3/3
2	A1AEK	A	601	4	-	7/16/17/19	0/2/2/2
5	ADP	C	604	-	-	2/12/32/32	0/3/3/3
3	FYN	C	602	-	-	4/45/66/66	0/3/3/3
6	EDO	B	605	-	-	1/1/1/1	-
6	EDO	D	606	-	-	1/1/1/1	-
2	A1AEK	C	601	4	-	7/16/17/19	0/2/2/2
6	EDO	B	606	-	-	0/1/1/1	-
6	EDO	A	605	-	-	1/1/1/1	-
6	EDO	A	609	-	-	1/1/1/1	-
5	ADP	B	604	-	-	1/12/32/32	0/3/3/3
6	EDO	D	605	-	-	0/1/1/1	-
8	PEG	C	605	-	-	2/4/4/4	-
6	EDO	A	607[A]	-	-	0/1/1/1	-
6	EDO	C	606	-	-	1/1/1/1	-
6	EDO	C	607[A]	-	-	1/1/1/1	-
6	EDO	A	606	-	-	1/1/1/1	-
2	A1AEK	B	601	4	-	5/16/19/19	0/2/2/2
5	ADP	A	604	-	-	1/12/32/32	0/3/3/3
5	ADP	D	604	-	-	2/12/32/32	0/3/3/3
2	A1AEK	D	601	4	-	6/16/19/19	0/2/2/2
3	FYN	A	602	-	-	3/45/66/66	0/3/3/3
6	EDO	A	608	-	-	1/1/1/1	-
3	FYN	D	602	-	-	3/44/64/66	0/3/3/3
6	EDO	A	607[B]	-	-	1/1/1/1	-
6	EDO	C	607[B]	-	-	0/1/1/1	-

All (33) bond length outliers are listed below:

Mol	Chain	Res	Type	Atoms	Z	Observed(Å)	Ideal(Å)
2	C	601	A1AEK	C4-N3	29.50	1.65	1.39
2	D	601	A1AEK	O28-C27	17.52	2.16	1.41
2	D	601	A1AEK	C27-C2	17.21	1.78	1.49
2	B	601	A1AEK	C5-S1	12.94	1.98	1.74
2	B	601	A1AEK	C27-C2	11.95	1.69	1.49
2	D	601	A1AEK	C5-S1	11.88	1.96	1.74
2	B	601	A1AEK	O28-C27	11.21	1.89	1.41
2	A	601	A1AEK	C6-C5	-8.59	1.46	1.51
2	B	601	A1AEK	C4-N3	-8.52	1.21	1.39
2	C	601	A1AEK	C2-N3	-8.21	1.18	1.36
2	C	601	A1AEK	C6-C5	-7.27	1.46	1.51
2	A	601	A1AEK	C2-N3	-6.02	1.23	1.36
2	D	601	A1AEK	C4-N3	-4.07	1.31	1.39
2	A	601	A1AEK	C4-N3	3.87	1.43	1.39
2	B	601	A1AEK	C6-C5	-3.86	1.48	1.51
5	C	604	ADP	PA-O3A	3.45	1.63	1.59
5	B	604	ADP	PA-O3A	3.34	1.63	1.59
2	C	601	A1AEK	C5'-C4'	-3.29	1.37	1.42
3	C	602	FYN	O4'-C1'	3.27	1.45	1.40
5	A	604	ADP	PA-O3A	3.27	1.63	1.59
2	D	601	A1AEK	C6-C5	-3.00	1.49	1.51
3	B	602	FYN	O4'-C1'	2.85	1.44	1.40
5	D	604	ADP	PA-O3A	2.67	1.62	1.59
2	D	601	A1AEK	C5'-C4'	-2.62	1.38	1.42
3	B	602	FYN	CP2-NP1	-2.50	1.40	1.46
3	A	602	FYN	P1-O6	2.47	1.62	1.59
2	C	601	A1AEK	PA-O3A	2.47	1.62	1.59
3	C	602	FYN	CM1-S	2.20	1.80	1.74
2	C	601	A1AEK	C2'-N1'	2.14	1.37	1.34
2	A	601	A1AEK	C2'-N1'	2.14	1.37	1.34
3	D	602	FYN	CP2-NP1	-2.12	1.41	1.46
3	D	602	FYN	O4'-C1'	2.10	1.43	1.40
3	C	602	FYN	C2-N3	2.00	1.35	1.32

All (90) bond angle outliers are listed below:

Mol	Chain	Res	Type	Atoms	Z	Observed(°)	Ideal(°)
3	D	602	FYN	CP1-CP2-NP1	-13.89	80.79	112.31
2	A	601	A1AEK	CM4-C4-C5	-11.14	103.24	127.60
2	C	601	A1AEK	CM4-C4-C5	-11.11	103.31	127.60
3	B	602	FYN	CP1-CP2-NP1	-10.76	87.90	112.31
2	B	601	A1AEK	CM4-C4-C5	-10.59	104.43	127.60

Continued on next page...

Continued from previous page...

Mol	Chain	Res	Type	Atoms	Z	Observed(°)	Ideal(°)
2	D	601	A1AEK	CM4-C4-C5	-10.41	104.83	127.60
2	C	601	A1AEK	C6-C5-C4	9.38	156.22	127.05
2	D	601	A1AEK	C4-N3-C2	-8.81	102.06	109.76
2	B	601	A1AEK	C4-N3-C2	-7.66	103.06	109.76
2	B	601	A1AEK	C6-C5-C4	7.35	149.91	127.05
2	A	601	A1AEK	C7'-N3-C2	-6.71	113.22	125.35
2	B	601	A1AEK	C5'-C7'-N3	-6.60	102.35	113.23
2	D	601	A1AEK	C5'-C7'-N3	-5.92	103.48	113.23
3	B	602	FYN	N3-C2-N1	-5.66	120.99	128.67
2	A	601	A1AEK	C6-C5-C4	5.66	144.65	127.05
3	D	602	FYN	N3-C2-N1	-5.55	121.14	128.67
3	A	602	FYN	N3-C2-N1	-5.43	121.30	128.67
2	C	601	A1AEK	C5-C4-N3	5.36	118.30	107.57
3	C	602	FYN	N3-C2-N1	-5.12	121.72	128.67
2	A	601	A1AEK	C6'-C5'-C4'	4.98	121.67	115.55
2	C	601	A1AEK	C7'-N3-C2	-4.84	116.61	125.35
2	D	601	A1AEK	C6-C5-C4	4.82	142.04	127.05
3	D	602	FYN	O4'-C1'-N9	-4.74	102.45	108.75
3	A	602	FYN	CP5-CP4-CP3	-4.72	104.53	112.39
3	B	602	FYN	CP4-CP3-NP1	-4.57	108.02	116.34
2	A	601	A1AEK	C5-C4-N3	4.55	116.68	107.57
5	A	604	ADP	C4'-O4'-C1'	-4.46	105.84	109.92
3	A	602	FYN	O4'-C1'-N9	-4.46	102.84	108.75
2	B	601	A1AEK	C5-C4-N3	4.43	116.93	107.66
2	C	601	A1AEK	C6'-C5'-C4'	4.37	120.92	115.55
5	C	604	ADP	N3-C2-N1	-4.36	122.76	128.67
3	B	602	FYN	CP4-CP5-NP2	-4.18	103.11	112.00
5	B	604	ADP	N3-C2-N1	-4.04	123.18	128.67
2	A	601	A1AEK	C5'-C6'-N1'	-3.96	117.40	123.83
3	C	602	FYN	O11-P1-O6	3.88	117.76	107.27
2	C	601	A1AEK	C5'-C7'-N3	-3.88	106.83	113.28
2	B	601	A1AEK	C6'-N1'-C2'	3.81	122.33	116.07
2	D	601	A1AEK	C5-C4-N3	3.73	115.47	107.66
2	B	601	A1AEK	C5'-C6'-N1'	-3.68	117.84	123.83
2	C	601	A1AEK	C5'-C6'-N1'	-3.64	117.90	123.83
2	D	601	A1AEK	N1'-C2'-N3'	-3.60	119.53	125.53
2	D	601	A1AEK	C6'-C5'-C4'	3.59	119.96	115.55
5	A	604	ADP	N3-C2-N1	-3.55	123.85	128.67
2	D	601	A1AEK	C5'-C6'-N1'	-3.51	118.12	123.83
2	D	601	A1AEK	C6'-N1'-C2'	3.48	121.78	116.07
2	C	601	A1AEK	CM4-C4-N3	3.40	126.87	122.53
2	A	601	A1AEK	C5'-C7'-N3	-3.39	107.63	113.28

Continued on next page...

Continued from previous page...

Mol	Chain	Res	Type	Atoms	Z	Observed(°)	Ideal(°)
3	B	602	FYN	O4'-C1'-N9	-3.37	104.28	108.75
3	D	602	FYN	CP4-CP5-NP2	-3.34	104.90	112.00
3	B	602	FYN	OP1-CP3-CP4	3.33	128.05	122.02
5	D	604	ADP	N3-C2-N1	-3.29	124.20	128.67
2	B	601	A1AEK	C6'-C5'-C4'	3.27	119.57	115.55
3	D	602	FYN	CP4-CP3-NP1	-3.11	110.67	116.34
2	D	601	A1AEK	CM2-C2'-N1'	3.09	120.49	117.20
2	A	601	A1AEK	CM2-C2'-N1'	3.09	120.49	117.20
2	B	601	A1AEK	N1'-C2'-N3'	-3.04	120.47	125.53
3	A	602	FYN	CP1-CP2-NP1	-2.95	106.26	112.41
2	A	601	A1AEK	C6'-N1'-C2'	2.92	120.87	116.07
3	A	602	FYN	CP2-NP1-CP3	-2.89	117.45	122.82
2	C	601	A1AEK	N4'-C4'-N3'	2.79	120.80	117.03
2	C	601	A1AEK	C6'-N1'-C2'	2.77	120.62	116.07
3	B	602	FYN	CP5-NP2-CP6	-2.75	117.60	122.55
5	B	604	ADP	C4'-O4'-C1'	-2.64	107.51	109.92
5	A	604	ADP	C1'-N9-C4	-2.63	122.02	126.64
2	C	601	A1AEK	N1'-C2'-N3'	-2.56	121.27	125.53
5	D	604	ADP	C4-C5-N7	-2.54	106.65	109.34
3	C	602	FYN	CP1-CP2-NP1	-2.53	107.14	112.41
5	A	604	ADP	C4-C5-N7	-2.48	106.72	109.34
3	D	602	FYN	OP1-CP3-CP4	2.44	126.45	122.02
2	A	601	A1AEK	N1'-C2'-N3'	-2.42	121.50	125.53
3	A	602	FYN	O11-P1-O6	2.36	113.66	107.27
2	B	601	A1AEK	CM2-C2'-N1'	2.36	119.71	117.20
5	C	604	ADP	C4'-O4'-C1'	-2.35	107.77	109.92
5	B	604	ADP	O4'-C1'-N9	-2.35	105.63	108.75
3	D	602	FYN	CP8-CPA-CP7	2.32	112.73	108.77
2	C	601	A1AEK	CM2-C2'-N1'	2.31	119.67	117.20
3	D	602	FYN	C1'-N9-C4	-2.29	122.61	126.64
3	D	602	FYN	CP5-NP2-CP6	-2.28	118.45	122.55
3	B	602	FYN	C1'-N9-C4	-2.28	122.64	126.64
2	D	601	A1AEK	C2'-N3'-C4'	2.21	121.50	118.10
2	A	601	A1AEK	N4'-C4'-N3'	2.19	119.98	117.03
5	B	604	ADP	C1'-N9-C4	-2.17	122.83	126.64
3	B	602	FYN	O7-CPB-CPA	-2.13	107.12	110.55
3	B	602	FYN	CP9-CPA-CPB	2.13	111.74	108.22
2	C	601	A1AEK	C5'-C4'-N4'	-2.13	119.27	122.14
5	C	604	ADP	C1'-N9-C4	-2.11	122.93	126.64
2	C	601	A1AEK	C7'-C5'-C4'	-2.11	115.63	121.83
5	B	604	ADP	C4-C5-N7	-2.10	107.12	109.34
3	D	602	FYN	O3'-C3'-C4'	-2.10	102.63	110.03

Continued on next page...

Continued from previous page...

Mol	Chain	Res	Type	Atoms	Z	Observed(°)	Ideal(°)
5	A	604	ADP	O2A-PA-O1A	2.05	121.98	112.44

There are no chirality outliers.

All (58) torsion outliers are listed below:

Mol	Chain	Res	Type	Atoms
2	A	601	A1AEK	C5-C6-C7-O7
2	A	601	A1AEK	C5'-C7'-N3-C2
2	A	601	A1AEK	PA-O3A-PB-O3B
2	B	601	A1AEK	C5-C6-C7-O7
2	B	601	A1AEK	PA-O3A-PB-O2B
2	B	601	A1AEK	PA-O3A-PB-O3B
2	C	601	A1AEK	C5-C6-C7-O7
2	C	601	A1AEK	C5'-C7'-N3-C2
2	C	601	A1AEK	PA-O3A-PB-O2B
2	C	601	A1AEK	PA-O3A-PB-O3B
2	D	601	A1AEK	C5-C6-C7-O7
2	D	601	A1AEK	PA-O3A-PB-O2B
2	D	601	A1AEK	PA-O3A-PB-O3B
3	A	602	FYN	CP2-CP1-S-CM1
3	B	602	FYN	CPB-O7-P2-O22
3	B	602	FYN	S-CP1-CP2-NP1
8	C	605	PEG	O2-C3-C4-O4
6	A	605	EDO	O1-C1-C2-O2
6	A	606	EDO	O1-C1-C2-O2
6	C	607[A]	EDO	O1-C1-C2-O2
6	C	608	EDO	O1-C1-C2-O2
2	A	601	A1AEK	C4-C5-C6-C7
2	C	601	A1AEK	C4-C5-C6-C7
5	C	604	ADP	O4'-C4'-C5'-O5'
5	D	604	ADP	O4'-C4'-C5'-O5'
5	D	604	ADP	C3'-C4'-C5'-O5'
6	A	607[B]	EDO	O1-C1-C2-O2
6	B	605	EDO	O1-C1-C2-O2
6	C	606	EDO	O1-C1-C2-O2
3	B	602	FYN	NP2-CP6-CP7-CPA
5	C	604	ADP	C3'-C4'-C5'-O5'
2	B	601	A1AEK	C4-C5-C6-C7
2	D	601	A1AEK	C4-C5-C6-C7
2	A	601	A1AEK	PA-O3A-PB-O2B
8	C	605	PEG	C1-C2-O2-C3
2	A	601	A1AEK	C7-O7-PA-O1A

Continued on next page...

Continued from previous page...

Mol	Chain	Res	Type	Atoms
2	C	601	A1AEK	C7-O7-PA-O1A
2	D	601	A1AEK	C5'-C7'-N3-C2
3	A	602	FYN	CPB-O7-P2-O22
3	C	602	FYN	CPB-O7-P2-O22
3	A	602	FYN	P2-O6-P1-O11
3	B	602	FYN	P2-O6-P1-O11
3	C	602	FYN	P2-O6-P1-O11
6	A	609	EDO	O1-C1-C2-O2
6	D	606	EDO	O1-C1-C2-O2
5	A	604	ADP	O4'-C4'-C5'-O5'
3	D	602	FYN	P2-O6-P1-O11
5	B	604	ADP	O4'-C4'-C5'-O5'
3	C	602	FYN	S-CP1-CP2-NP1
2	A	601	A1AEK	PA-O3A-PB-O1B
2	B	601	A1AEK	PA-O3A-PB-O1B
3	B	602	FYN	OP2-CP6-CP7-CPA
2	C	601	A1AEK	PA-O3A-PB-O1B
2	D	601	A1AEK	PA-O3A-PB-O1B
3	C	602	FYN	CP2-CP1-S-CM1
3	D	602	FYN	S-CP1-CP2-NP1
6	A	608	EDO	O1-C1-C2-O2
3	D	602	FYN	P2-O6-P1-O12

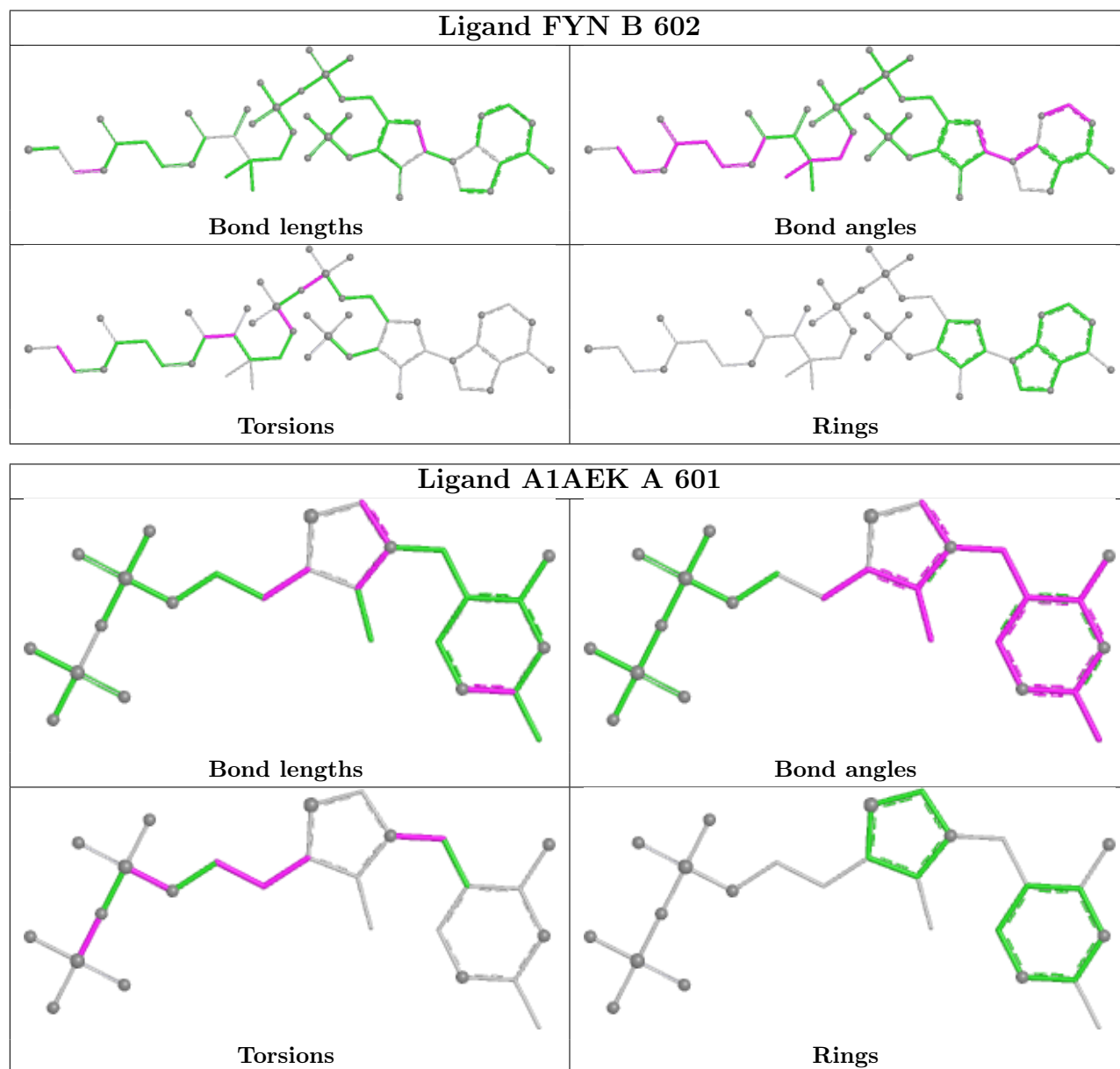
There are no ring outliers.

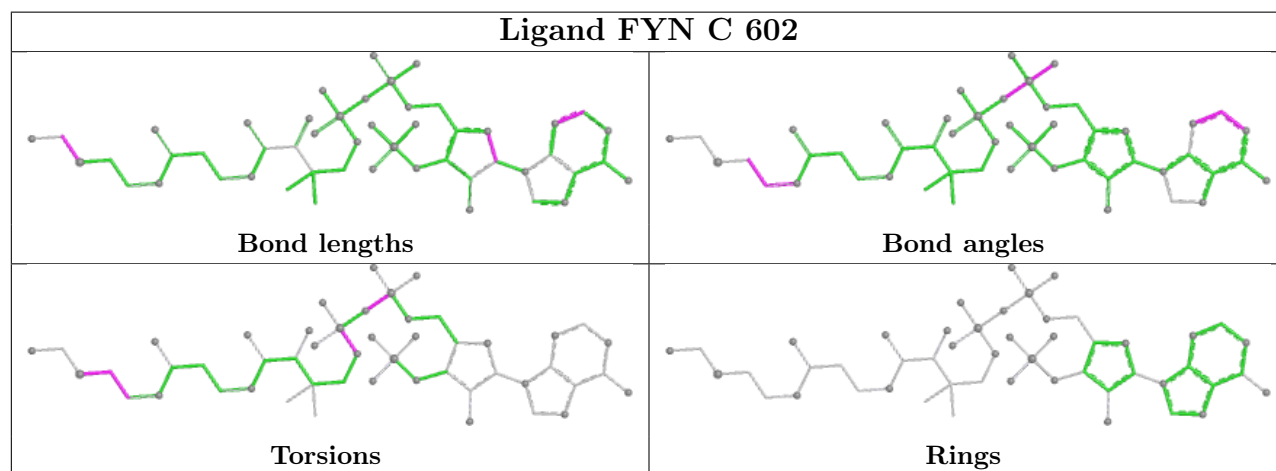
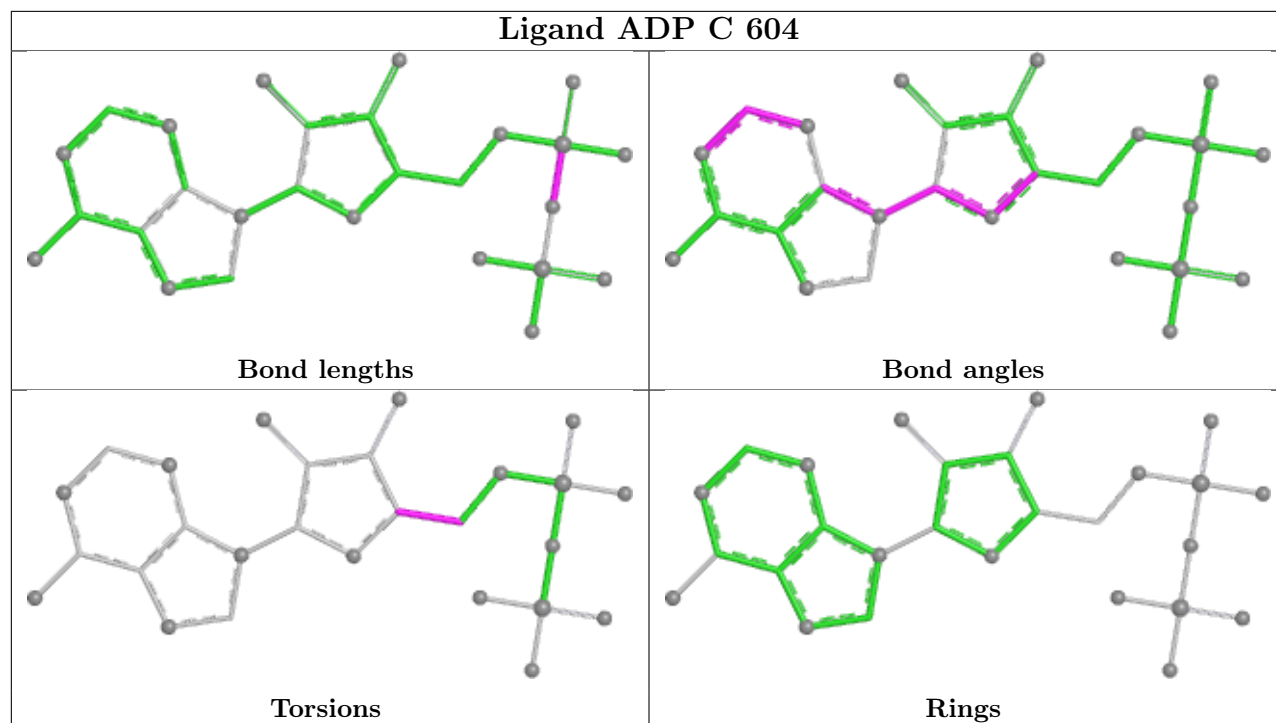
10 monomers are involved in 22 short contacts:

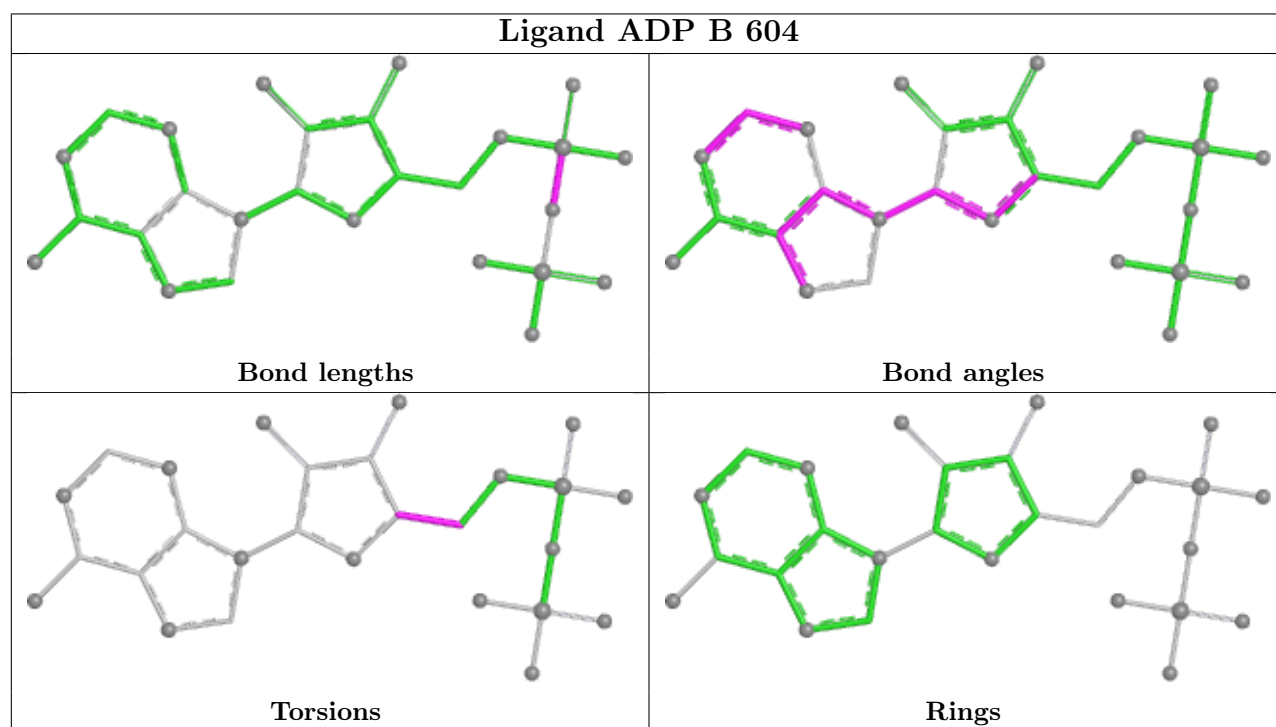
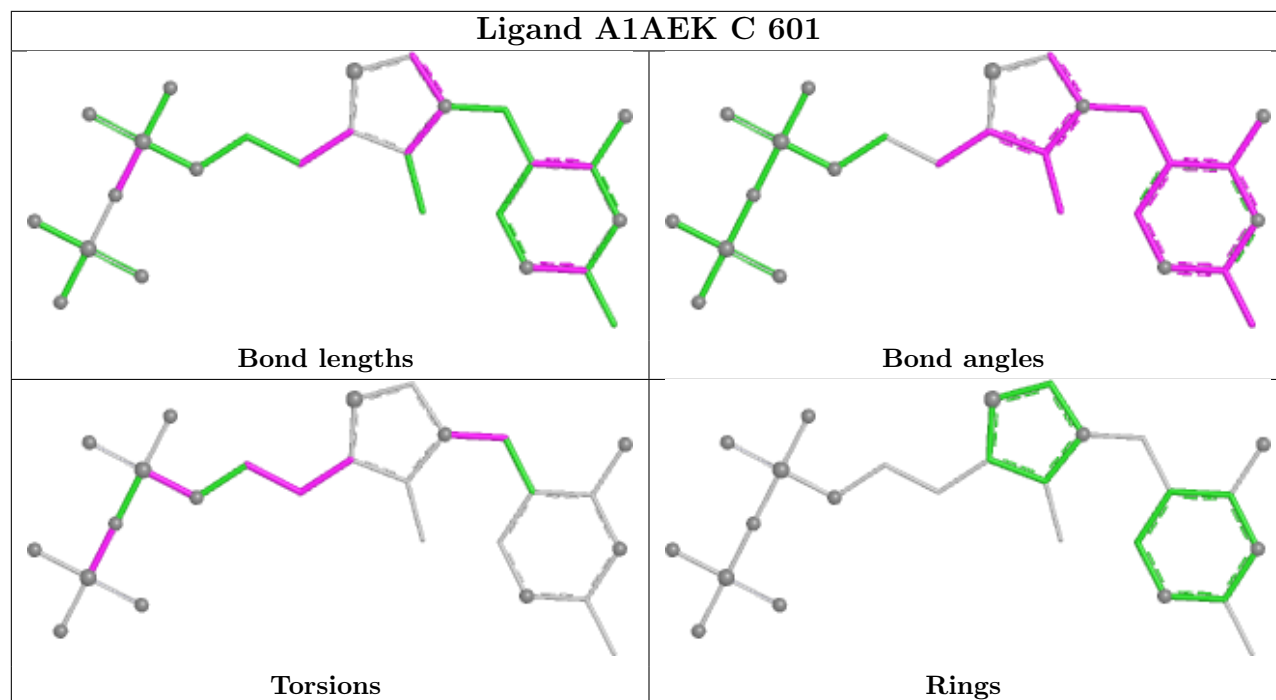
Mol	Chain	Res	Type	Clashes	Symm-Clashes
3	B	602	FYN	2	0
2	A	601	A1AEK	5	0
3	C	602	FYN	1	0
2	C	601	A1AEK	4	0
7	B	607	PO4	1	0
2	B	601	A1AEK	4	0
2	D	601	A1AEK	5	0
3	A	602	FYN	3	0
3	D	602	FYN	3	0
7	C	609	PO4	1	0

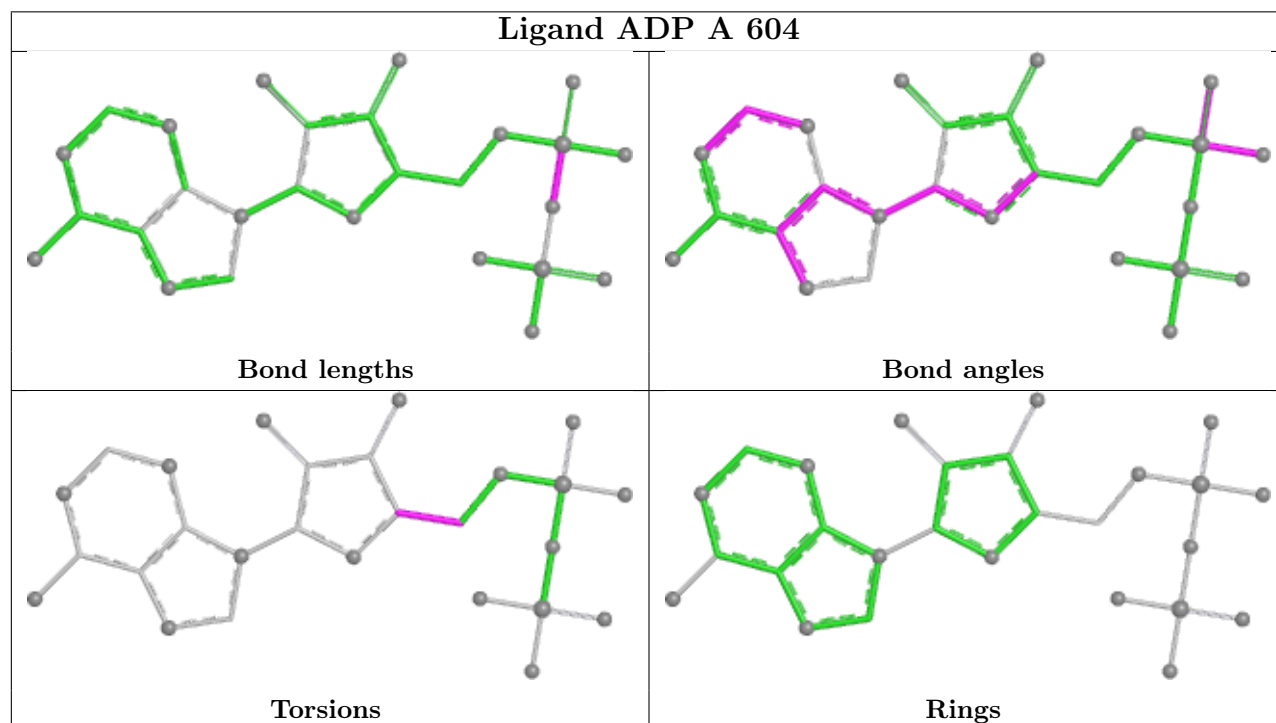
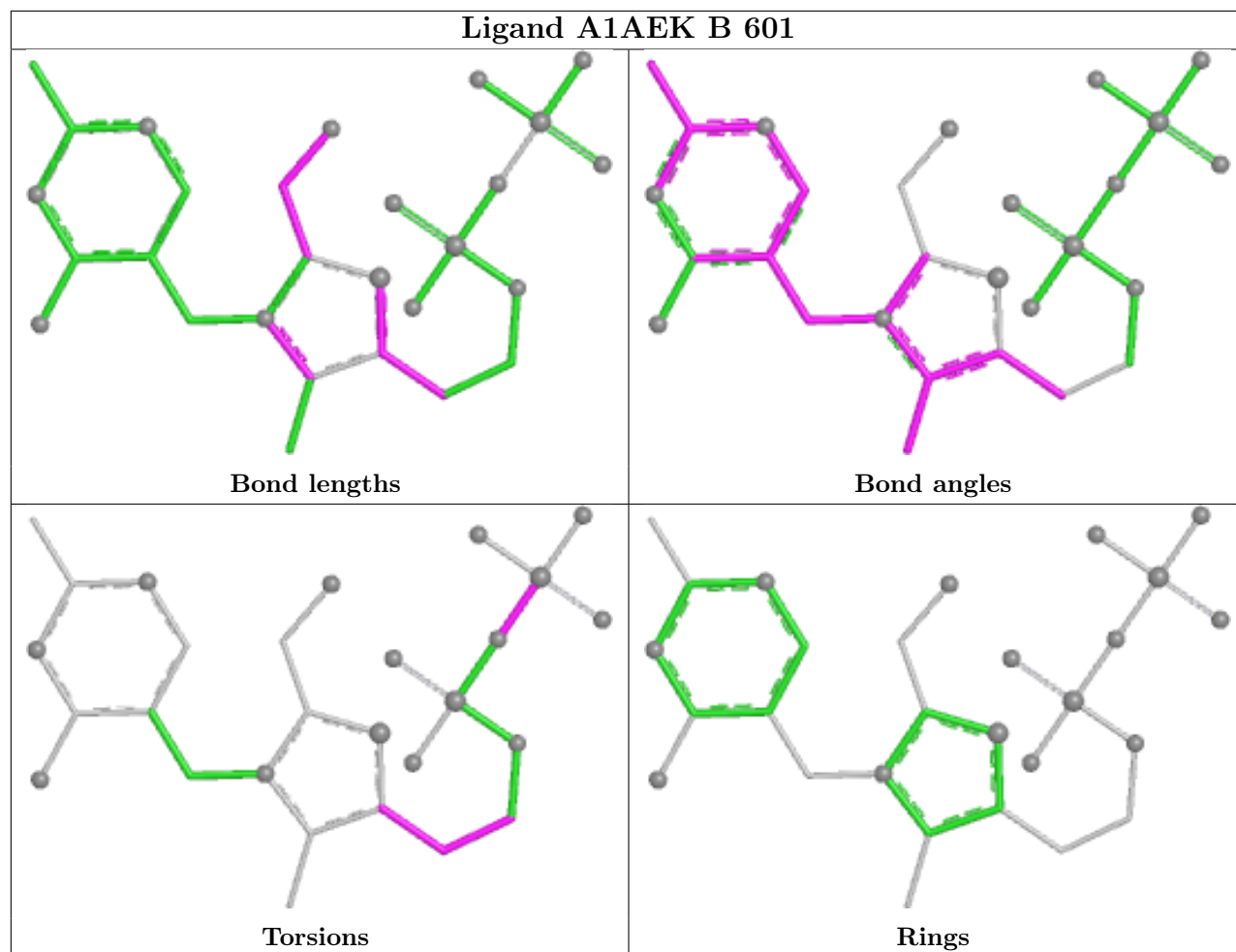
The following is a two-dimensional graphical depiction of Mogul quality analysis of bond lengths, bond angles, torsion angles, and ring geometry for all instances of the Ligand of Interest. In addition, ligands with molecular weight > 250 and outliers as shown on the validation Tables will also be included. For torsion angles, if less than 5% of the Mogul distribution of torsion angles is

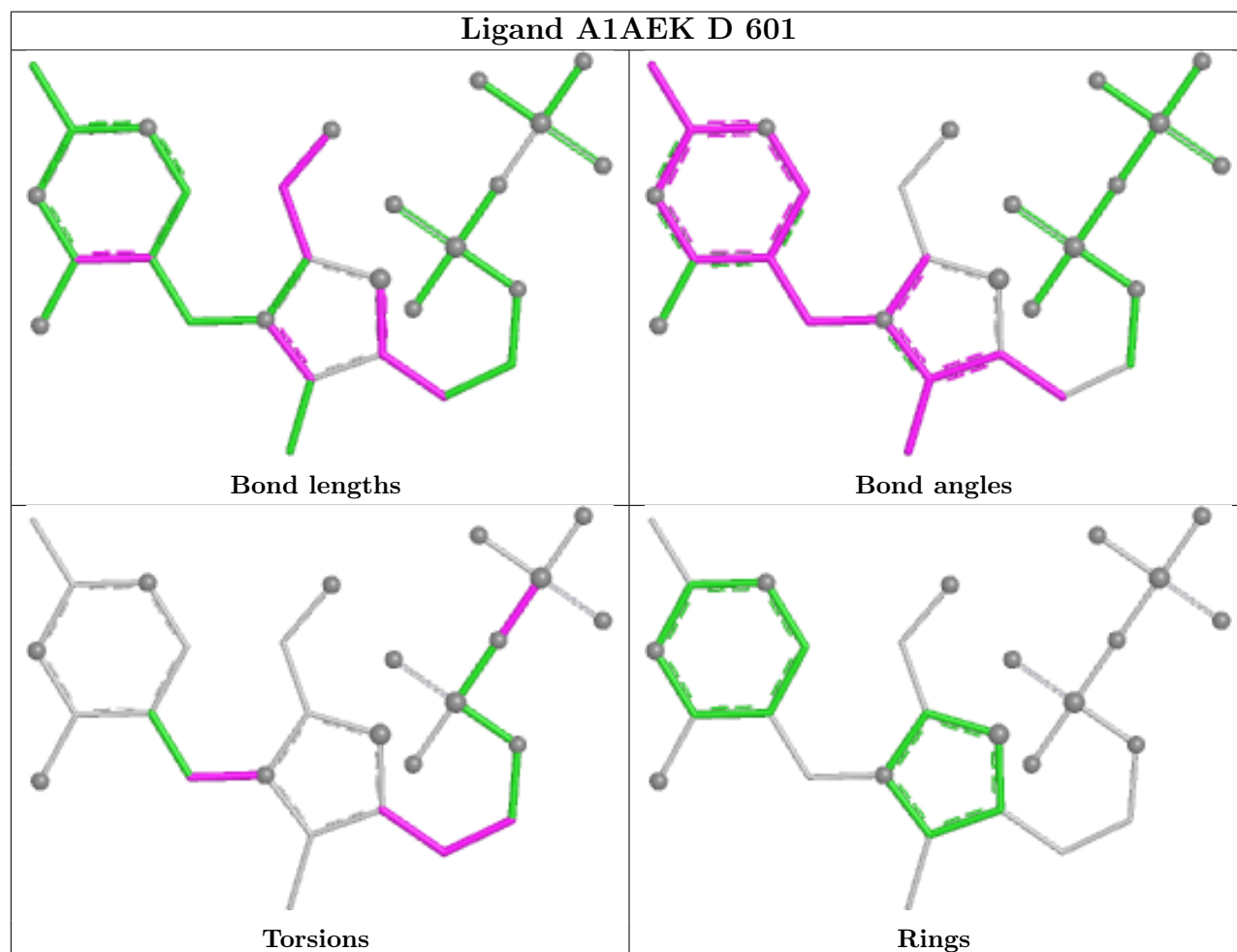
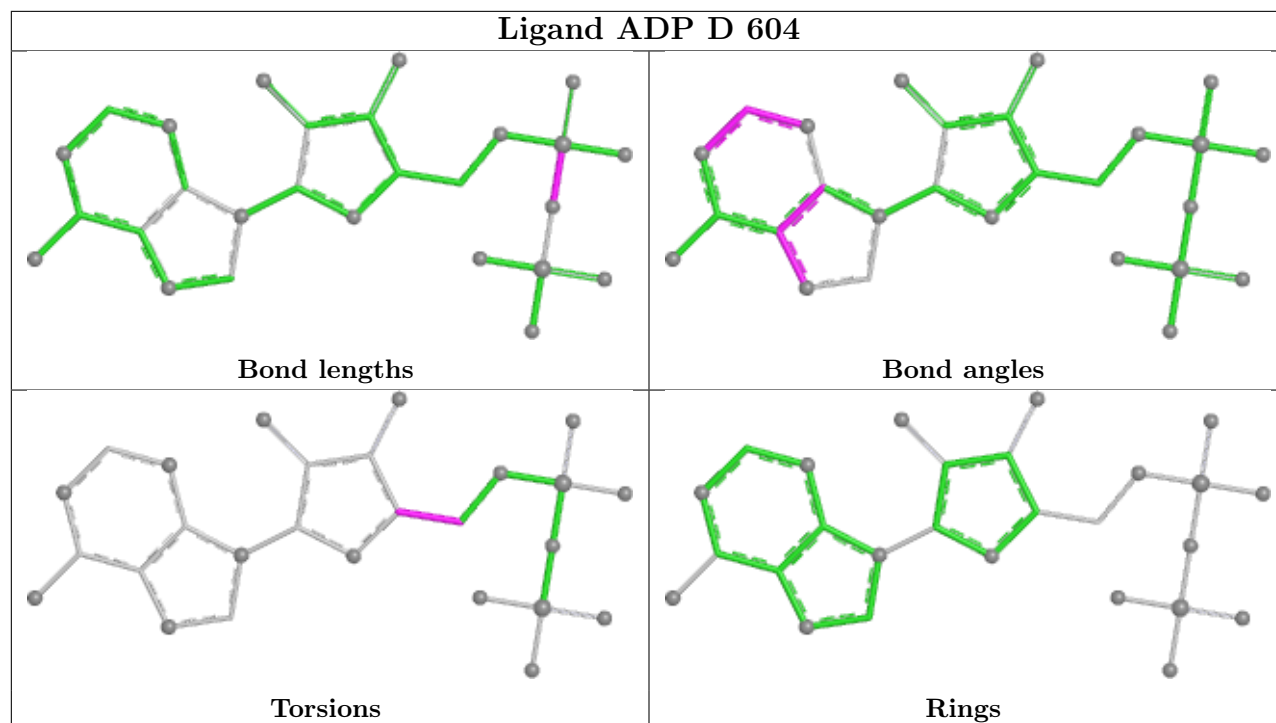
within 10 degrees of the torsion angle in question, then that torsion angle is considered an outlier. Any bond that is central to one or more torsion angles identified as an outlier by Mogul will be highlighted in the graph. For rings, the root-mean-square deviation (RMSD) between the ring in question and similar rings identified by Mogul is calculated over all ring torsion angles. If the average RMSD is greater than 60 degrees and the minimal RMSD between the ring in question and any Mogul-identified rings is also greater than 60 degrees, then that ring is considered an outlier. The outliers are highlighted in purple. The color gray indicates Mogul did not find sufficient equivalents in the CSD to analyse the geometry.

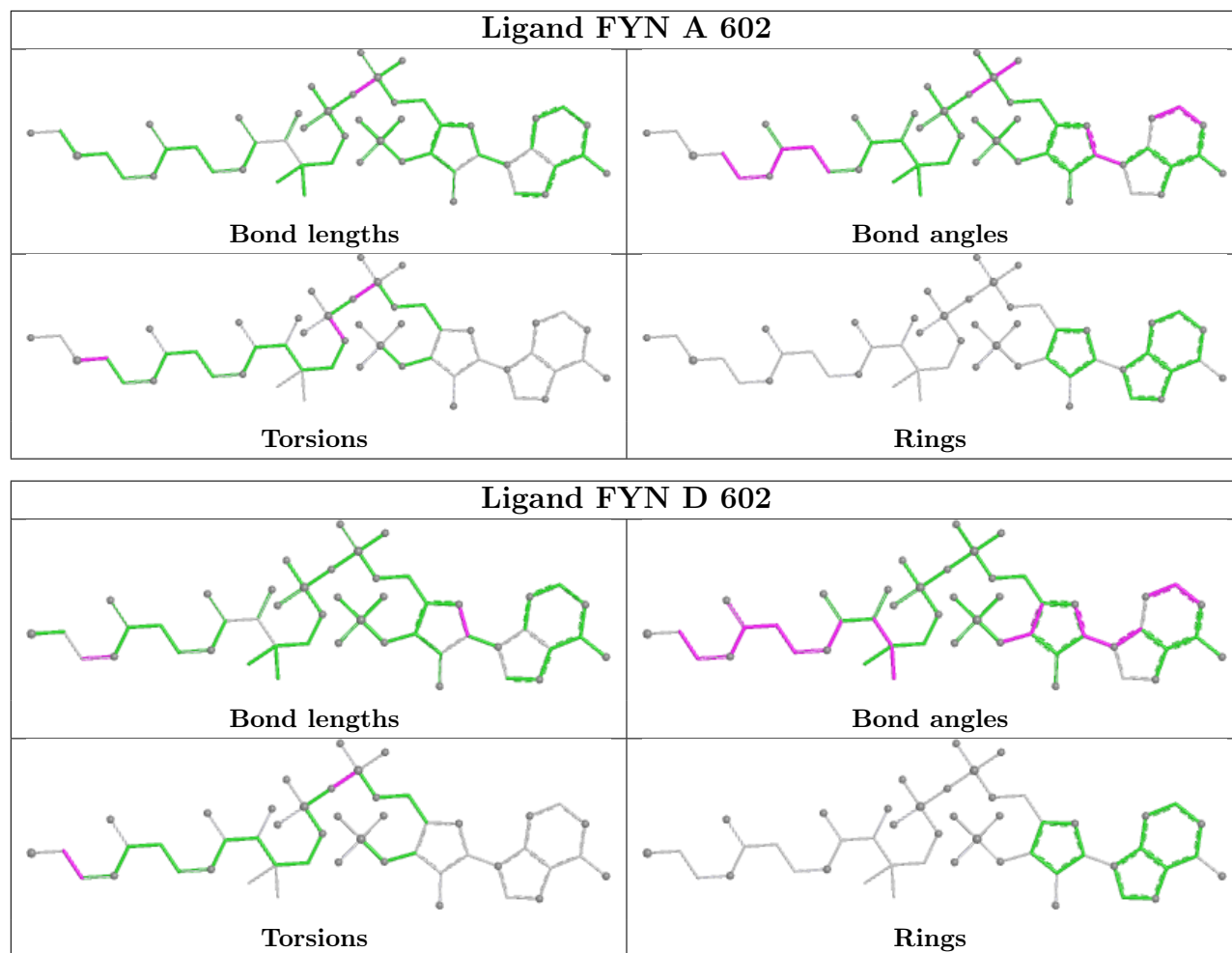












5.7 Other polymers [\(i\)](#)

There are no such residues in this entry.

5.8 Polymer linkage issues [\(i\)](#)

There are no chain breaks in this entry.

6 Fit of model and data [i](#)

6.1 Protein, DNA and RNA chains [i](#)

In the following table, the column labelled ‘#RSRZ > 2’ contains the number (and percentage) of RSRZ outliers, followed by percent RSRZ outliers for the chain as percentile scores relative to all X-ray entries and entries of similar resolution. The OWAB column contains the minimum, median, 95th percentile and maximum values of the occupancy-weighted average B-factor per residue. The column labelled ‘Q < 0.9’ lists the number of (and percentage) of residues with an average occupancy less than 0.9.

Mol	Chain	Analysed	<RSRZ>	#RSRZ>2	OWAB(Å ²)	Q<0.9
1	A	554/557 (99%)	-0.22	7 (1%) 74 78	7, 18, 30, 85	4 (0%)
1	B	555/557 (99%)	-0.10	9 (1%) 70 74	9, 19, 35, 75	6 (1%)
1	C	554/557 (99%)	-0.18	5 (0%) 81 83	12, 19, 33, 64	1 (0%)
1	D	554/557 (99%)	-0.10	8 (1%) 73 77	9, 19, 35, 71	3 (0%)
All	All	2217/2228 (99%)	-0.15	29 (1%) 74 78	7, 19, 34, 85	14 (0%)

All (29) RSRZ outliers are listed below:

Mol	Chain	Res	Type	RSRZ
1	D	482	PRO	4.9
1	A	481	ALA	4.6
1	C	482	PRO	4.6
1	B	482	PRO	3.9
1	B	485	GLY	3.9
1	A	485	GLY	3.7
1	B	4	SER	3.5
1	D	4	SER	3.4
1	C	481	ALA	3.4
1	B	480	PRO	3.3
1	D	481	ALA	3.2
1	B	486	GLN	3.1
1	D	486	GLN	3.0
1	D	176	ALA	2.7
1	B	478	GLY	2.7
1	A	331[A]	SER	2.5
1	D	332	SER	2.5
1	D	480	PRO	2.5
1	A	486	GLN	2.5
1	D	178	VAL	2.4
1	B	481	ALA	2.3

Continued on next page...

Continued from previous page...

Mol	Chain	Res	Type	RSRZ
1	A	-2	SER	2.3
1	B	1	MET	2.2
1	B	179	ARG	2.2
1	C	176	ALA	2.2
1	C	-2	SER	2.2
1	C	4	SER	2.1
1	A	176	ALA	2.0
1	A	4	SER	2.0

6.2 Non-standard residues in protein, DNA, RNA chains [i](#)

There are no non-standard protein/DNA/RNA residues in this entry.

6.3 Carbohydrates [i](#)

There are no monosaccharides in this entry.

6.4 Ligands [i](#)

In the following table, the Atoms column lists the number of modelled atoms in the group and the number defined in the chemical component dictionary. The B-factors column lists the minimum, median, 95th percentile and maximum values of B factors of atoms in the group. The column labelled 'Q< 0.9' lists the number of atoms with occupancy less than 0.9.

Mol	Type	Chain	Res	Atoms	RSCC	RSR	B-factors(\AA^2)	Q<0.9
6	EDO	A	609	4/4	0.66	0.20	59,59,60,60	0
6	EDO	B	606	4/4	0.70	0.21	19,19,19,19	4
7	PO4	B	607	5/5	0.72	0.14	72,74,74,75	0
6	EDO	A	607[A]	4/4	0.77	0.16	47,47,48,48	4
6	EDO	A	607[B]	4/4	0.77	0.16	47,47,48,48	4
7	PO4	A	610	5/5	0.77	0.14	83,85,85,85	0
6	EDO	A	608	4/4	0.77	0.17	19,19,19,19	4
7	PO4	C	609	5/5	0.78	0.13	79,79,80,80	0
6	EDO	C	608	4/4	0.79	0.17	19,19,19,19	4
7	PO4	D	607	5/5	0.84	0.13	71,71,72,72	0
6	EDO	A	605	4/4	0.85	0.14	40,43,44,45	0
8	PEG	C	605	7/7	0.85	0.15	50,53,53,54	0
6	EDO	C	607[A]	4/4	0.88	0.10	19,19,19,19	4
6	EDO	C	607[B]	4/4	0.88	0.10	19,19,19,19	4
6	EDO	D	605	4/4	0.89	0.12	46,46,46,46	0

Continued on next page...

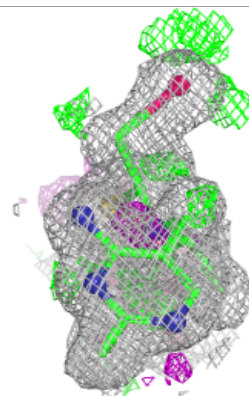
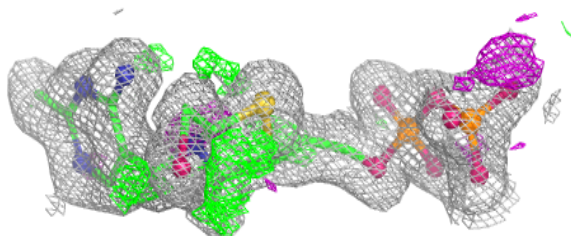
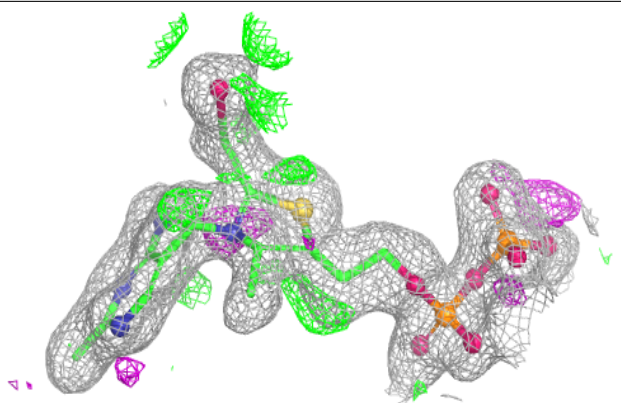
Continued from previous page...

Mol	Type	Chain	Res	Atoms	RSCC	RSR	B-factors(Å ²)	Q<0.9
6	EDO	C	606	4/4	0.90	0.11	19,19,19,19	4
6	EDO	D	606	4/4	0.91	0.13	19,19,19,19	0
6	EDO	A	606	4/4	0.92	0.11	23,28,31,34	0
6	EDO	B	605	4/4	0.93	0.10	19,19,19,19	0
2	A1AEK	D	601	28/28	0.95	0.08	16,19,27,30	0
2	A1AEK	C	601	26/28	0.96	0.07	14,16,23,26	0
2	A1AEK	A	601	26/28	0.96	0.08	14,16,23,26	0
3	FYN	B	602	48/50	0.96	0.07	19,24,31,36	2
3	FYN	C	602	50/50	0.96	0.08	17,21,29,41	3
3	FYN	D	602	48/50	0.96	0.07	19,23,31,34	3
2	A1AEK	B	601	28/28	0.96	0.08	16,20,27,32	0
5	ADP	D	604	27/27	0.97	0.06	15,18,19,20	0
3	FYN	A	602	50/50	0.97	0.07	17,21,29,41	2
4	MG	D	603	1/1	0.97	0.04	16,16,16,16	0
5	ADP	A	604	27/27	0.97	0.06	13,16,18,20	0
5	ADP	B	604	27/27	0.97	0.05	14,16,18,20	0
4	MG	B	603	1/1	0.98	0.05	15,15,15,15	0
5	ADP	C	604	27/27	0.98	0.05	16,17,19,20	0
4	MG	A	603	1/1	0.99	0.06	12,12,12,12	0
4	MG	C	603	1/1	0.99	0.07	12,12,12,12	0

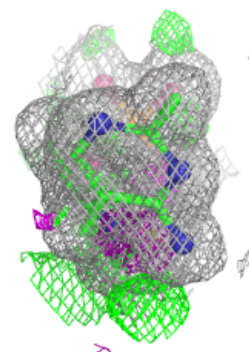
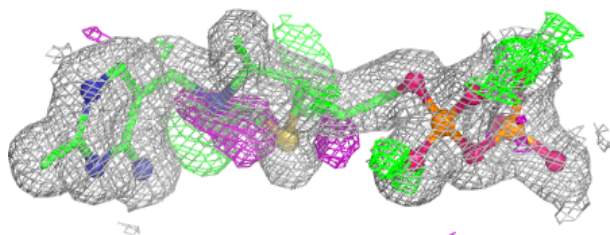
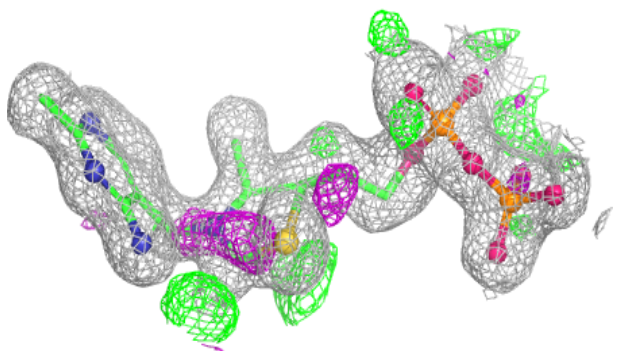
The following is a graphical depiction of the model fit to experimental electron density of all instances of the Ligand of Interest. In addition, ligands with molecular weight > 250 and outliers as shown on the geometry validation Tables will also be included. Each fit is shown from different orientation to approximate a three-dimensional view.

Electron density around A1AEK D 601:

$2mF_o-DF_c$ (at 0.7 rmsd) in gray
 mF_o-DF_c (at 3 rmsd) in purple (negative)
and green (positive)

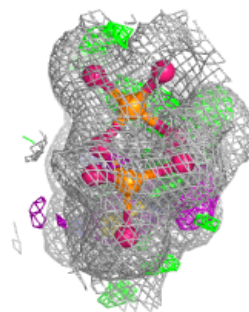
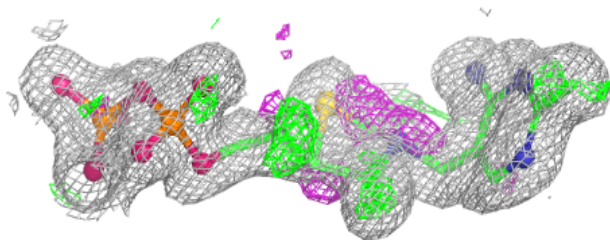
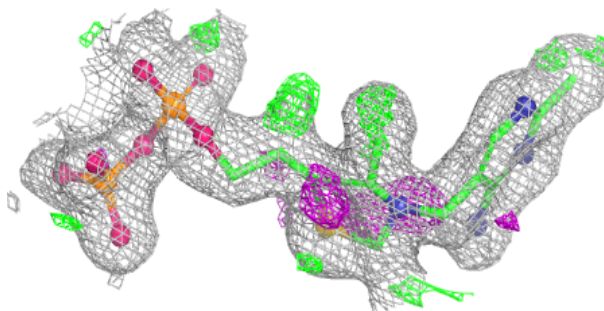
**Electron density around A1AEK C 601:**

$2mF_o-DF_c$ (at 0.7 rmsd) in gray
 mF_o-DF_c (at 3 rmsd) in purple (negative)
and green (positive)

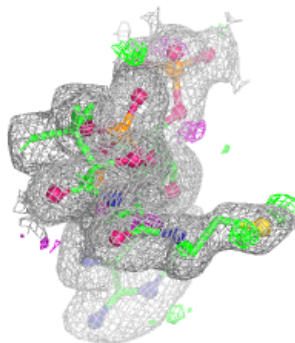
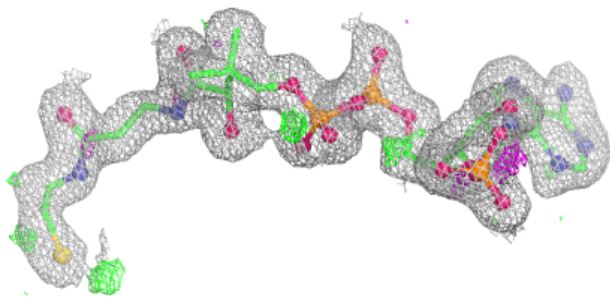
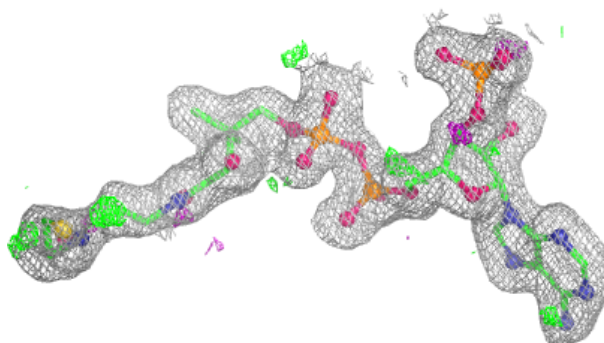


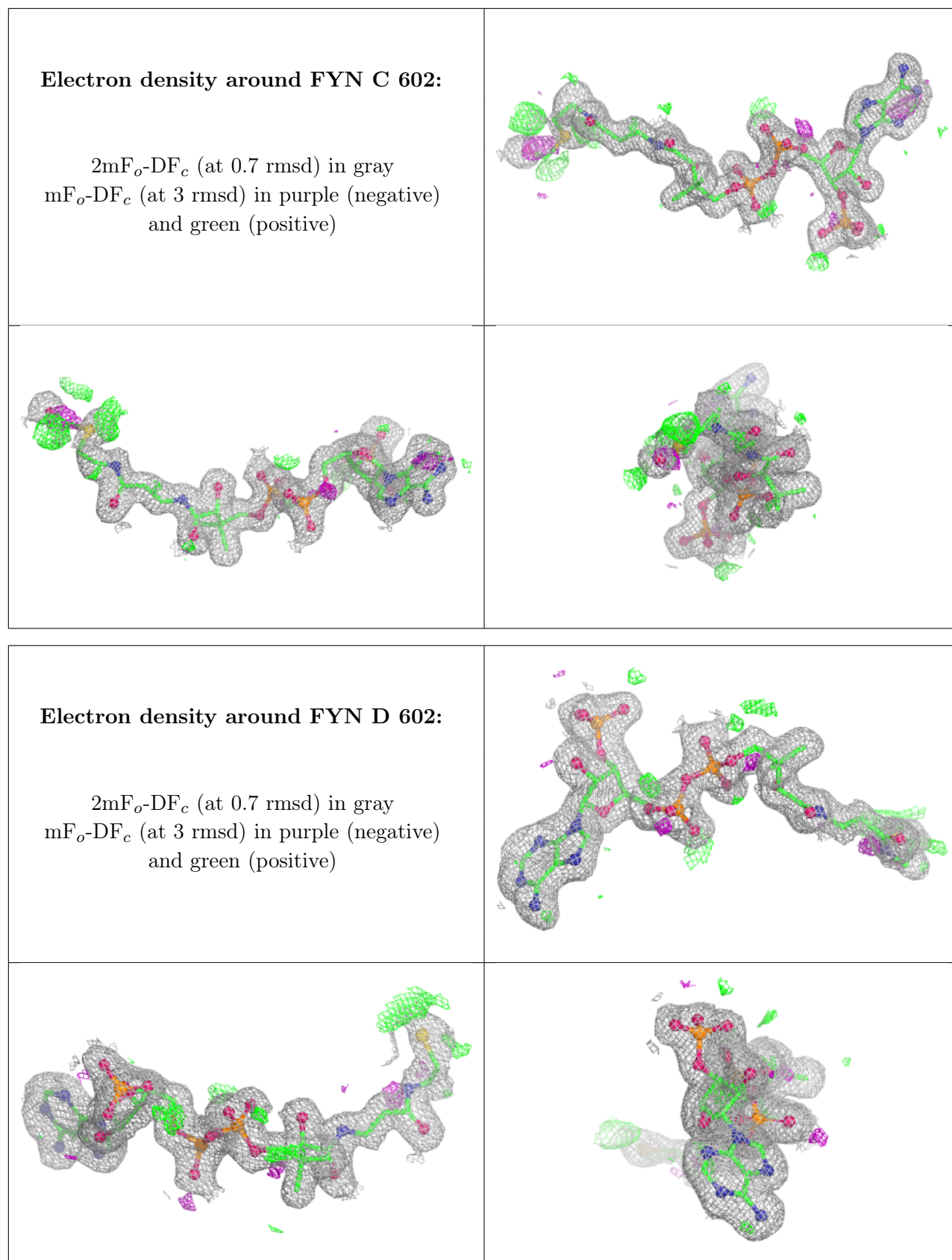
Electron density around A1AEK A 601:

$2mF_o-DF_c$ (at 0.7 rmsd) in gray
 mF_o-DF_c (at 3 rmsd) in purple (negative)
and green (positive)

**Electron density around FYN B 602:**

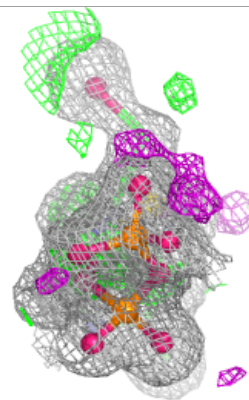
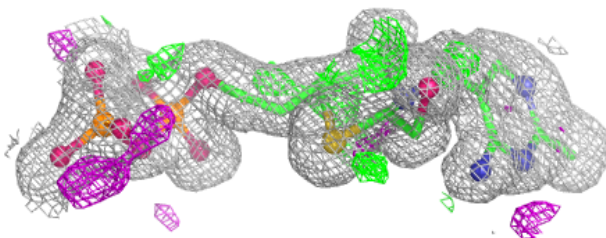
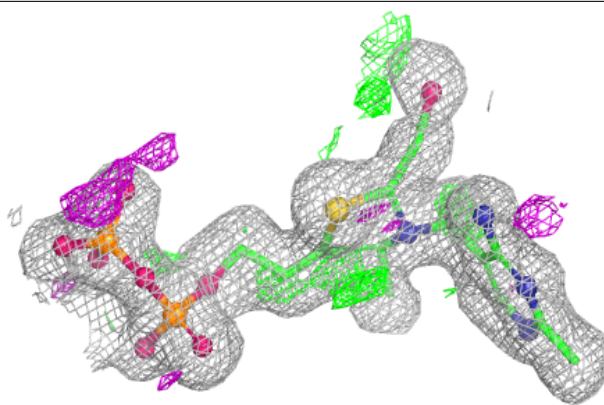
$2mF_o-DF_c$ (at 0.7 rmsd) in gray
 mF_o-DF_c (at 3 rmsd) in purple (negative)
and green (positive)



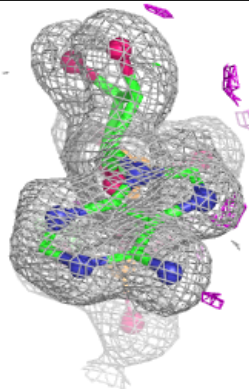
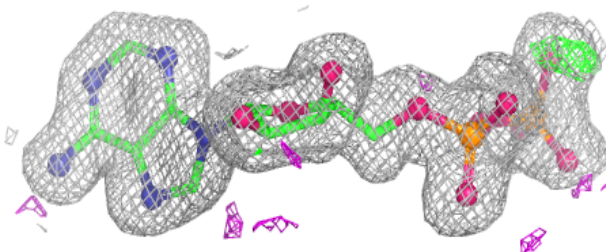
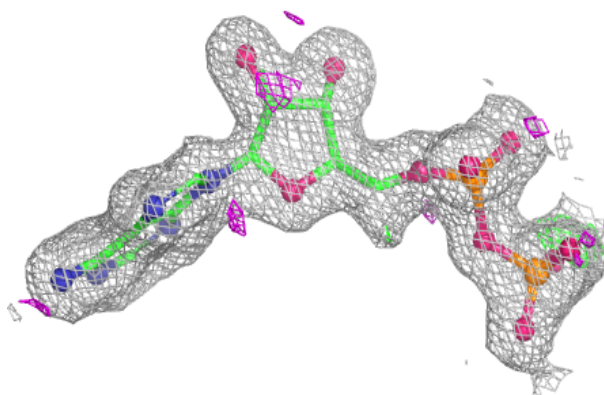


Electron density around A1AEK B 601:

$2mF_o-DF_c$ (at 0.7 rmsd) in gray
 mF_o-DF_c (at 3 rmsd) in purple (negative)
and green (positive)

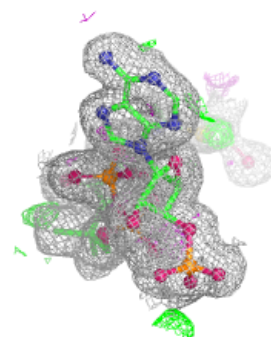
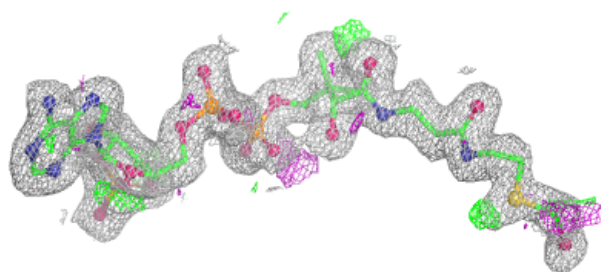
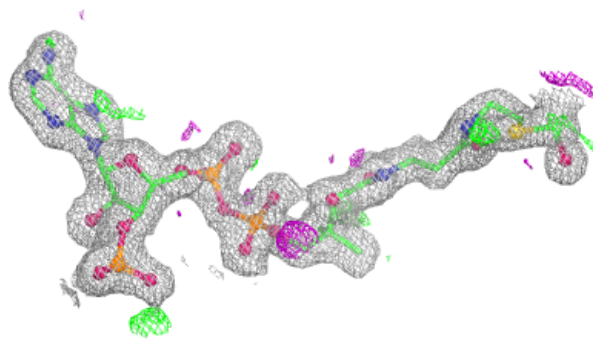
**Electron density around ADP D 604:**

$2mF_o-DF_c$ (at 0.7 rmsd) in gray
 mF_o-DF_c (at 3 rmsd) in purple (negative)
and green (positive)

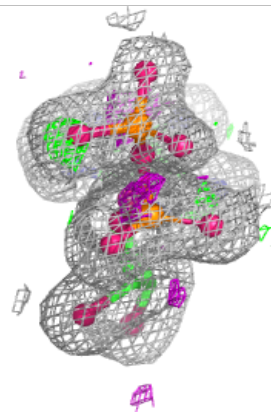
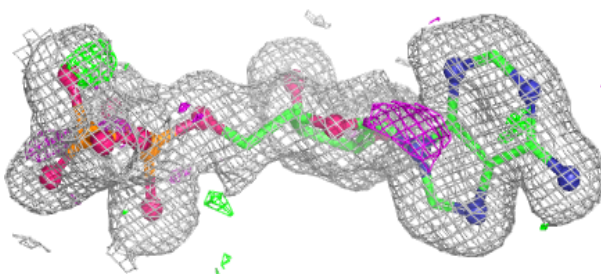
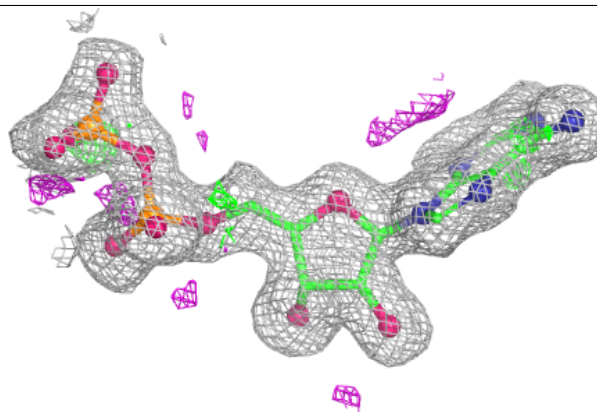


Electron density around FYN A 602:

$2mF_o-DF_c$ (at 0.7 rmsd) in gray
 mF_o-DF_c (at 3 rmsd) in purple (negative)
and green (positive)

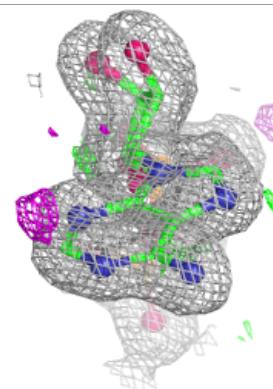
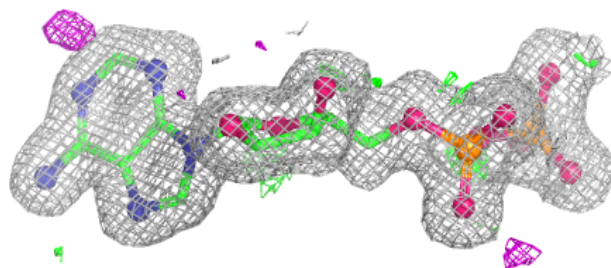
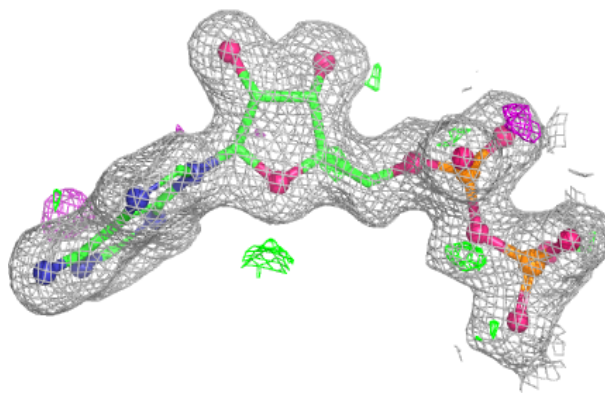
**Electron density around ADP A 604:**

$2mF_o-DF_c$ (at 0.7 rmsd) in gray
 mF_o-DF_c (at 3 rmsd) in purple (negative)
and green (positive)

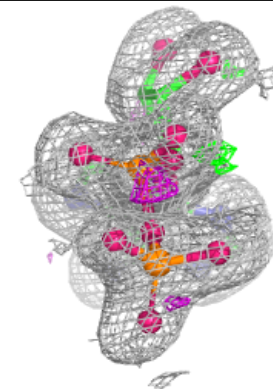
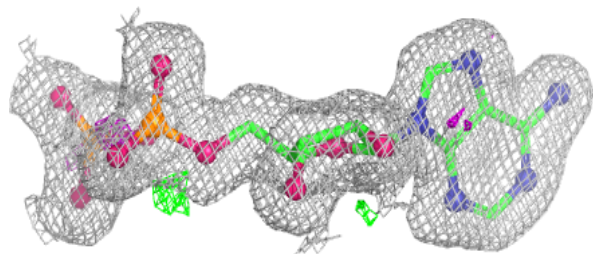
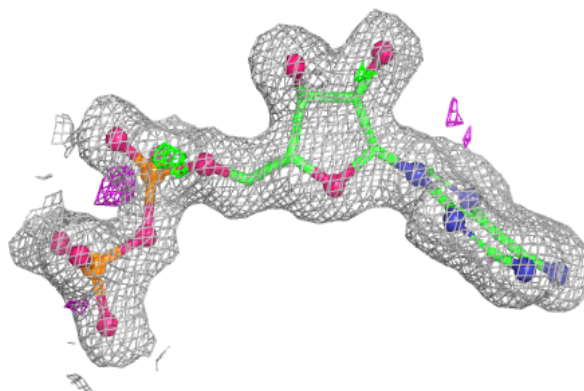


Electron density around ADP B 604:

$2mF_o-DF_c$ (at 0.7 rmsd) in gray
 mF_o-DF_c (at 3 rmsd) in purple (negative)
and green (positive)

**Electron density around ADP C 604:**

$2mF_o-DF_c$ (at 0.7 rmsd) in gray
 mF_o-DF_c (at 3 rmsd) in purple (negative)
and green (positive)



6.5 Other polymers [i](#)

There are no such residues in this entry.