



# Full wwPDB X-ray Structure Validation Report ⓘ

Sep 25, 2023 – 06:28 AM EDT

PDB ID : 5W3D  
Title : The structure of kinesin-14 wild-type Ncd-ADP dimer  
Authors : Park, H.W.; Ma, Z.; Chacko, J.; Jiang, S.M.; Robinson, R.C.; Endow, S.A.  
Deposited on : 2017-06-07  
Resolution : 2.79 Å(reported)

This is a Full wwPDB X-ray Structure Validation Report for a publicly released PDB entry.

We welcome your comments at [validation@mail.wwpdb.org](mailto:validation@mail.wwpdb.org)

A user guide is available at

<https://www.wwpdb.org/validation/2017/XrayValidationReportHelp>

with specific help available everywhere you see the ⓘ symbol.

The types of validation reports are described at

<http://www.wwpdb.org/validation/2017/FAQs#types>.

---

The following versions of software and data (see [references ⓘ](#)) were used in the production of this report:

MolProbity : 4.02b-467  
Mogul : 1.8.5 (274361), CSD as541be (2020)  
Xtriage (Phenix) : 1.13  
EDS : 2.35.1  
buster-report : 1.1.7 (2018)  
Percentile statistics : 20191225.v01 (using entries in the PDB archive December 25th 2019)  
Refmac : 5.8.0158  
CCP4 : 7.0.044 (Gargrove)  
Ideal geometry (proteins) : Engh & Huber (2001)  
Ideal geometry (DNA, RNA) : Parkinson et al. (1996)  
Validation Pipeline (wwPDB-VP) : 2.35.1

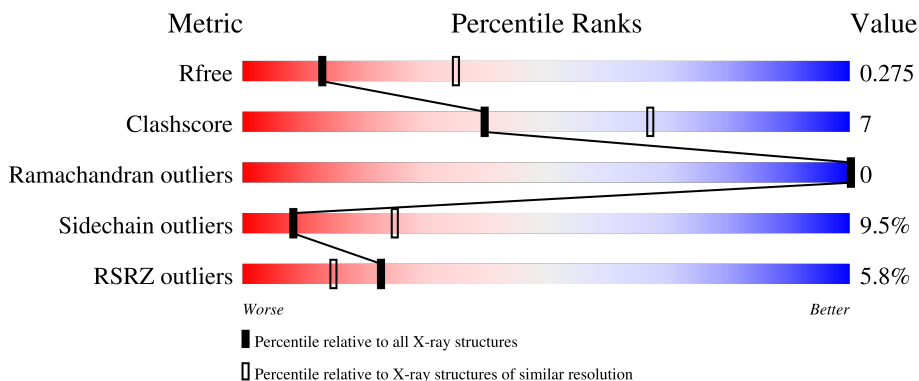
# 1 Overall quality at a glance

The following experimental techniques were used to determine the structure:

*X-RAY DIFFRACTION*

The reported resolution of this entry is 2.79 Å.

Percentile scores (ranging between 0-100) for global validation metrics of the entry are shown in the following graphic. The table shows the number of entries on which the scores are based.



Metric	Whole archive (#Entries)	Similar resolution (#Entries, resolution range(Å))
$R_{free}$	130704	3140 (2.80-2.80)
Clashscore	141614	3569 (2.80-2.80)
Ramachandran outliers	138981	3498 (2.80-2.80)
Sidechain outliers	138945	3500 (2.80-2.80)
RSRZ outliers	127900	3078 (2.80-2.80)

The table below summarises the geometric issues observed across the polymeric chains and their fit to the electron density. The red, orange, yellow and green segments of the lower bar indicate the fraction of residues that contain outliers for  $\geq 3$ , 2, 1 and 0 types of geometric quality criteria respectively. A grey segment represents the fraction of residues that are not modelled. The numeric value for each fraction is indicated below the corresponding segment, with a dot representing fractions  $\leq 5\%$ . The upper red bar (where present) indicates the fraction of residues that have poor fit to the electron density. The numeric value is given above the bar.

Mol	Chain	Length	Quality of chain
1	A	412	 8% 66% 18% 14%
1	B	412	 8% 61% 14% 24%

## 2 Entry composition [i](#)

There are 3 unique types of molecules in this entry. The entry contains 5346 atoms, of which 0 are hydrogens and 0 are deuteriums.

In the tables below, the ZeroOcc column contains the number of atoms modelled with zero occupancy, the AltConf column contains the number of residues with at least one atom in alternate conformation and the Trace column contains the number of residues modelled with at most 2 atoms.

- Molecule 1 is a protein called Protein claret segregational.

Mol	Chain	Residues	Atoms					ZeroOcc	AltConf	Trace
			Total	C	N	O	S			
1	A	354	2830	1764	497	549	20	0	0	0
1	B	313	2460	1541	425	477	17	0	0	0

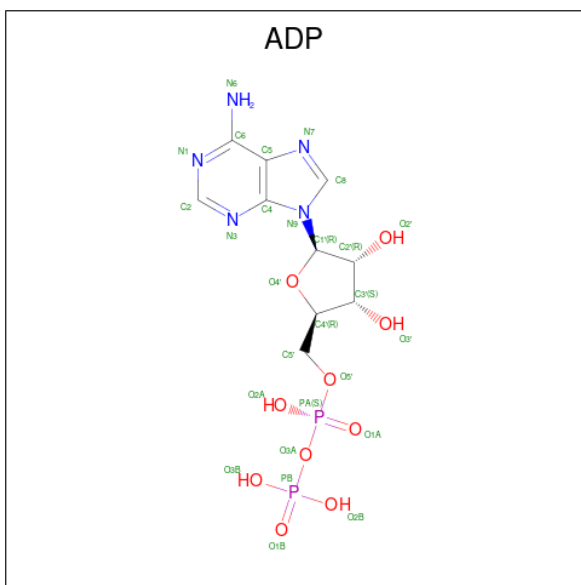
There are 10 discrepancies between the modelled and reference sequences:

Chain	Residue	Modelled	Actual	Comment	Reference
A	289	MET	-	initiating methionine	UNP P20480
A	290	GLY	-	expression tag	UNP P20480
A	291	SER	-	expression tag	UNP P20480
A	292	MET	-	expression tag	UNP P20480
A	697	ASN	SER	conflict	UNP P20480
B	289	MET	-	initiating methionine	UNP P20480
B	290	GLY	-	expression tag	UNP P20480
B	291	SER	-	expression tag	UNP P20480
B	292	MET	-	expression tag	UNP P20480
B	697	ASN	SER	conflict	UNP P20480

- Molecule 2 is MAGNESIUM ION (three-letter code: MG) (formula: Mg).

Mol	Chain	Residues	Atoms		ZeroOcc	AltConf
			Total	Mg		
2	A	1	1	1	0	0
2	B	1	1	1	0	0

- Molecule 3 is ADENOSINE-5'-DIPHOSPHATE (three-letter code: ADP) (formula: C<sub>10</sub>H<sub>15</sub>N<sub>5</sub>O<sub>10</sub>P<sub>2</sub>).



Mol	Chain	Residues	Atoms					ZeroOcc	AltConf
			Total	C	N	O	P		
3	A	1	27	10	5	10	2	0	0
3	B	1	27	10	5	10	2	0	0



## 4 Data and refinement statistics

Property	Value	Source
Space group	C 1 2 1	Depositor
Cell constants a, b, c, $\alpha$ , $\beta$ , $\gamma$	163.27Å 67.25Å 94.42Å 90.00° 97.92° 90.00°	Depositor
Resolution (Å)	46.80 – 2.79 46.76 – 2.79	Depositor EDS
% Data completeness (in resolution range)	99.0 (46.80-2.79) 99.1 (46.76-2.79)	Depositor EDS
$R_{merge}$	(Not available)	Depositor
$R_{sym}$	0.09	Depositor
$\langle I/\sigma(I) \rangle$ <sup>1</sup>	1.04 (at 2.77Å)	Xtrriage
Refinement program	REFMAC 5.7.0029	Depositor
R, $R_{free}$	0.235 , 0.280 0.236 , 0.275	Depositor DCC
$R_{free}$ test set	1288 reflections (5.09%)	wwPDB-VP
Wilson B-factor (Å <sup>2</sup> )	71.5	Xtrriage
Anisotropy	0.042	Xtrriage
Bulk solvent $k_{sol}$ (e/Å <sup>3</sup> ), $B_{sol}$ (Å <sup>2</sup> )	0.33 , 51.7	EDS
L-test for twinning <sup>2</sup>	$\langle  L  \rangle = 0.49$ , $\langle L^2 \rangle = 0.32$	Xtrriage
Estimated twinning fraction	No twinning to report.	Xtrriage
$F_o, F_c$ correlation	0.93	EDS
Total number of atoms	5346	wwPDB-VP
Average B, all atoms (Å <sup>2</sup> )	82.0	wwPDB-VP

Xtrriage's analysis on translational NCS is as follows: *The largest off-origin peak in the Patterson function is 5.29% of the height of the origin peak. No significant pseudotranslation is detected.*

<sup>1</sup>Intensities estimated from amplitudes.

<sup>2</sup>Theoretical values of  $\langle |L| \rangle$ ,  $\langle L^2 \rangle$  for acentric reflections are 0.5, 0.333 respectively for untwinned datasets, and 0.375, 0.2 for perfectly twinned datasets.

## 5 Model quality [i](#)

### 5.1 Standard geometry [i](#)

Bond lengths and bond angles in the following residue types are not validated in this section: MG, ADP

The Z score for a bond length (or angle) is the number of standard deviations the observed value is removed from the expected value. A bond length (or angle) with  $|Z| > 5$  is considered an outlier worth inspection. RMSZ is the root-mean-square of all Z scores of the bond lengths (or angles).

Mol	Chain	Bond lengths		Bond angles	
		RMSZ	# Z  >5	RMSZ	# Z  >5
1	A	0.44	0/2876	0.66	3/3879 (0.1%)
1	B	0.39	0/2498	0.61	1/3371 (0.0%)
All	All	0.42	0/5374	0.64	4/7250 (0.1%)

There are no bond length outliers.

All (4) bond angle outliers are listed below:

Mol	Chain	Res	Type	Atoms	Z	Observed(°)	Ideal(°)
1	A	505	ALA	CB-CA-C	7.85	121.88	110.10
1	A	485	TYR	CB-CA-C	-5.92	98.56	110.40
1	A	486	ASN	N-CA-CB	5.22	120.00	110.60
1	B	653	CYS	CB-CA-C	-5.14	100.12	110.40

There are no chirality outliers.

There are no planarity outliers.

### 5.2 Too-close contacts [i](#)

In the following table, the Non-H and H(model) columns list the number of non-hydrogen atoms and hydrogen atoms in the chain respectively. The H(added) column lists the number of hydrogen atoms added and optimized by MolProbity. The Clashes column lists the number of clashes within the asymmetric unit, whereas Symm-Clashes lists symmetry-related clashes.

Mol	Chain	Non-H	H(model)	H(added)	Clashes	Symm-Clashes
1	A	2830	0	2779	47	2
1	B	2460	0	2378	31	2
2	A	1	0	0	0	0
2	B	1	0	0	0	0
3	A	27	0	12	3	0

*Continued on next page...*

*Continued from previous page...*

Mol	Chain	Non-H	H(model)	H(added)	Clashes	Symm-Clashes
3	B	27	0	12	1	0
All	All	5346	0	5181	77	2

The all-atom clashscore is defined as the number of clashes found per 1000 atoms (including hydrogen atoms). The all-atom clashscore for this structure is 7.

All (77) close contacts within the same asymmetric unit are listed below, sorted by their clash magnitude.

Atom-1	Atom-2	Interatomic distance (Å)	Clash overlap (Å)
1:B:611:LEU:O	1:B:615:GLN:HG3	1.02	1.17
1:B:611:LEU:O	1:B:615:GLN:CG	1.99	1.09
1:A:488:VAL:HG23	1:A:490:TYR:CE1	2.04	0.93
1:B:420:GLN:HA	1:B:423:LEU:HD12	1.56	0.88
1:A:488:VAL:CG2	1:A:490:TYR:CE1	2.70	0.75
1:B:622:TYR:CB	1:B:623:ARG:HA	2.17	0.74
1:B:352:PHE:CD2	1:B:642:LEU:HD11	2.26	0.69
1:B:376:SER:HB2	1:B:398:PHE:O	1.93	0.69
1:A:488:VAL:CG2	1:A:490:TYR:CZ	2.77	0.67
1:A:359:LEU:HD23	1:A:362:GLU:H	1.63	0.64
1:A:488:VAL:HG21	1:A:490:TYR:OH	2.00	0.62
1:A:427:ASN:C	1:A:428:ILE:HD12	2.20	0.62
1:A:488:VAL:HG23	1:A:490:TYR:CZ	2.34	0.62
1:A:365:ARG:HB2	1:A:650:PHE:CD1	2.36	0.61
1:B:486:ASN:OD1	1:B:486:ASN:O	2.18	0.61
1:A:622:TYR:CG	1:A:632:MET:HG3	2.36	0.60
1:B:625:SER:HB3	1:B:628:THR:OG1	2.02	0.59
1:B:622:TYR:CD2	1:B:622:TYR:N	2.71	0.58
1:B:352:PHE:CE2	1:B:642:LEU:HD11	2.39	0.57
1:A:526:ASN:OD1	1:A:529:ARG:NH1	2.37	0.57
1:B:621:PRO:C	1:B:622:TYR:HD2	2.08	0.57
1:A:488:VAL:CG2	1:A:490:TYR:OH	2.55	0.54
1:A:437:GLY:N	3:A:802:ADP:O1B	2.40	0.54
1:A:360:GLU:OE1	1:A:360:GLU:N	2.36	0.53
1:B:603:LEU:O	1:B:607:THR:HG23	2.08	0.53
1:A:439:GLY:CA	3:A:802:ADP:O1A	2.58	0.51
1:A:299:GLU:OE2	1:B:304:ARG:NH2	2.43	0.51
1:A:360:GLU:H	1:A:360:GLU:CD	2.14	0.51
1:A:485:TYR:CZ	1:A:549:ARG:HG3	2.46	0.51
1:A:524:ASP:HB2	1:A:525:PRO:HD2	1.93	0.51
1:A:349:ILE:C	1:A:349:ILE:HD13	2.32	0.50
1:A:454:ILE:HB	1:A:455:PRO:HD3	1.93	0.50

*Continued on next page...*



*Continued from previous page...*

Atom-1	Atom-2	Interatomic distance (Å)	Clash overlap (Å)
1:B:621:PRO:C	1:B:622:TYR:CD2	2.85	0.50
1:A:436:THR:OG1	1:A:585:GLU:OE2	2.23	0.50
1:A:554:HIS:CD2	1:A:582:ALA:H	2.30	0.49
1:A:622:TYR:CD1	1:A:632:MET:HG3	2.47	0.49
1:A:621:PRO:HB2	1:A:624:ASN:CG	2.33	0.49
1:A:374:ASP:OD1	1:A:377:THR:N	2.45	0.49
1:A:342:VAL:O	1:A:346:ARG:HG3	2.12	0.49
1:B:425:GLY:HA2	1:B:573:VAL:O	2.14	0.48
1:A:403:HIS:HB2	1:A:404:PRO:CD	2.44	0.48
1:B:622:TYR:CB	1:B:623:ARG:CA	2.92	0.47
1:A:525:PRO:HB2	1:A:529:ARG:NH2	2.29	0.46
1:A:380:LEU:HD12	1:A:380:LEU:H	1.80	0.46
1:A:487:GLU:HG3	1:A:626:LYS:HD3	1.96	0.46
1:A:538:ASN:N	1:A:538:ASN:OD1	2.49	0.46
1:B:379:GLU:CG	1:B:381:GLN:HE21	2.29	0.46
1:A:356:ARG:NE	1:A:437:GLY:O	2.45	0.46
1:B:473:TRP:HE1	1:B:563:GLY:C	2.19	0.46
1:B:492:LEU:O	1:B:493:LEU:HD23	2.16	0.45
1:B:352:PHE:CZ	1:B:414:MET:HG2	2.52	0.45
1:B:486:ASN:H	1:B:488:VAL:HG12	1.81	0.45
1:B:625:SER:OG	1:B:626:LYS:N	2.50	0.45
1:B:439:GLY:N	3:B:802:ADP:O2A	2.50	0.45
1:A:481:PHE:CD1	1:A:481:PHE:N	2.84	0.45
1:B:610:ILE:HG22	1:B:614:LEU:HD12	1.99	0.45
1:B:482:LEU:N	1:B:482:LEU:HD23	2.30	0.44
1:B:442:TYR:O	1:B:446:GLY:HA2	2.17	0.44
1:A:668:ASN:HD22	1:A:668:ASN:N	2.14	0.44
1:A:439:GLY:HA2	3:A:802:ADP:O1A	2.17	0.44
1:A:613:LEU:HD13	1:A:620:ILE:CD1	2.48	0.44
1:A:365:ARG:NH2	1:A:652:ASP:OD1	2.50	0.44
1:A:668:ASN:HD22	1:A:668:ASN:H	1.66	0.43
1:B:522:VAL:HG13	1:B:527:HIS:CD2	2.52	0.43
1:A:471:LEU:HD12	1:A:471:LEU:N	2.32	0.43
1:A:403:HIS:HB2	1:A:404:PRO:HD2	2.00	0.43
1:A:408:GLN:HA	1:A:408:GLN:OE1	2.18	0.43
1:A:654:PHE:O	1:A:658:VAL:HG23	2.19	0.42
1:A:482:LEU:C	1:A:482:LEU:HD12	2.40	0.41
1:B:429:CYS:HB2	1:B:641:THR:HB	2.02	0.41
1:A:491:ASP:OD1	1:A:491:ASP:C	2.58	0.41
1:A:621:PRO:HB2	1:A:624:ASN:ND2	2.36	0.41
1:B:349:ILE:O	1:B:349:ILE:HG23	2.21	0.41

*Continued on next page...*

Continued from previous page...

Atom-1	Atom-2	Interatomic distance (Å)	Clash overlap (Å)
1:B:631:LEU:O	1:B:633:PRO:HD3	2.20	0.41
1:A:485:TYR:O	1:A:488:VAL:HG22	2.21	0.40
1:B:622:TYR:HB2	1:B:623:ARG:HA	2.00	0.40
1:A:411:ILE:HG23	1:A:644:PHE:CZ	2.57	0.40

All (2) symmetry-related close contacts are listed below. The label for Atom-2 includes the symmetry operator and encoded unit-cell translations to be applied.

Atom-1	Atom-2	Interatomic distance (Å)	Clash overlap (Å)
1:A:364:ASN:CB	1:B:624:ASN:OD1[2_565]	1.69	0.51
1:A:364:ASN:CG	1:B:624:ASN:OD1[2_565]	2.11	0.09

## 5.3 Torsion angles [i](#)

### 5.3.1 Protein backbone [i](#)

In the following table, the Percentiles column shows the percent Ramachandran outliers of the chain as a percentile score with respect to all X-ray entries followed by that with respect to entries of similar resolution.

The Analysed column shows the number of residues for which the backbone conformation was analysed, and the total number of residues.

Mol	Chain	Analysed	Favoured	Allowed	Outliers	Percentiles	
1	A	346/412 (84%)	336 (97%)	10 (3%)	0	100	100
1	B	295/412 (72%)	263 (89%)	32 (11%)	0	100	100
All	All	641/824 (78%)	599 (93%)	42 (7%)	0	100	100

There are no Ramachandran outliers to report.

### 5.3.2 Protein sidechains [i](#)

In the following table, the Percentiles column shows the percent sidechain outliers of the chain as a percentile score with respect to all X-ray entries followed by that with respect to entries of similar resolution.

The Analysed column shows the number of residues for which the sidechain conformation was analysed, and the total number of residues.

Mol	Chain	Analysed	Rotameric	Outliers	Percentiles	
1	A	322/372 (87%)	289 (90%)	33 (10%)	7	22
1	B	275/372 (74%)	251 (91%)	24 (9%)	10	30
All	All	597/744 (80%)	540 (90%)	57 (10%)	8	25

All (57) residues with a non-rotameric sidechain are listed below:

Mol	Chain	Res	Type
1	A	298	THR
1	A	311	LEU
1	A	338	LEU
1	A	349	ILE
1	A	355	ILE
1	A	359	LEU
1	A	366	MET
1	A	368	CYS
1	A	371	THR
1	A	380	LEU
1	A	384	ASP
1	A	405	LEU
1	A	459	ASP
1	A	461	LEU
1	A	487	GLU
1	A	495	ASN
1	A	497	GLN
1	A	501	GLU
1	A	512	ILE
1	A	528	LEU
1	A	532	MET
1	A	537	MET
1	A	538	ASN
1	A	539	ARG
1	A	550	SER
1	A	571	ILE
1	A	613	LEU
1	A	625	SER
1	A	640	LYS
1	A	648	SER
1	A	666	SER
1	A	668	ASN
1	A	671	LYS
1	B	296	LEU
1	B	300	VAL

*Continued on next page...*

*Continued from previous page...*

Mol	Chain	Res	Type
1	B	306	ARG
1	B	312	ARG
1	B	314	ASN
1	B	315	GLU
1	B	326	GLU
1	B	346	ARG
1	B	350	ARG
1	B	356	ARG
1	B	368	CYS
1	B	393	GLN
1	B	395	ILE
1	B	435	GLN
1	B	521	THR
1	B	539	ARG
1	B	559	LEU
1	B	562	ILE
1	B	585	GLU
1	B	614	LEU
1	B	622	TYR
1	B	626	LYS
1	B	641	THR
1	B	659	LYS

Sometimes sidechains can be flipped to improve hydrogen bonding and reduce clashes. All (17) such sidechains are listed below:

Mol	Chain	Res	Type
1	A	302	HIS
1	A	393	GLN
1	A	470	ASN
1	A	495	ASN
1	A	497	GLN
1	A	554	HIS
1	A	577	ASN
1	A	629	HIS
1	A	668	ASN
1	B	305	GLN
1	B	327	GLN
1	B	364	ASN
1	B	381	GLN
1	B	538	ASN
1	B	577	ASN
1	B	615	GLN

*Continued on next page...*

*Continued from previous page...*

Mol	Chain	Res	Type
1	B	655	GLN

### 5.3.3 RNA [i](#)

There are no RNA molecules in this entry.

## 5.4 Non-standard residues in protein, DNA, RNA chains [i](#)

There are no non-standard protein/DNA/RNA residues in this entry.

## 5.5 Carbohydrates [i](#)

There are no monosaccharides in this entry.

## 5.6 Ligand geometry [i](#)

Of 4 ligands modelled in this entry, 2 are monoatomic - leaving 2 for Mogul analysis.

In the following table, the Counts columns list the number of bonds (or angles) for which Mogul statistics could be retrieved, the number of bonds (or angles) that are observed in the model and the number of bonds (or angles) that are defined in the Chemical Component Dictionary. The Link column lists molecule types, if any, to which the group is linked. The Z score for a bond length (or angle) is the number of standard deviations the observed value is removed from the expected value. A bond length (or angle) with  $|Z| > 2$  is considered an outlier worth inspection. RMSZ is the root-mean-square of all Z scores of the bond lengths (or angles).

Mol	Type	Chain	Res	Link	Bond lengths			Bond angles		
					Counts	RMSZ	# Z  > 2	Counts	RMSZ	# Z  > 2
3	ADP	B	802	2	24,29,29	0.98	1 (4%)	29,45,45	1.41	3 (10%)
3	ADP	A	802	2	24,29,29	1.12	2 (8%)	29,45,45	1.55	6 (20%)

In the following table, the Chirals column lists the number of chiral outliers, the number of chiral centers analysed, the number of these observed in the model and the number defined in the Chemical Component Dictionary. Similar counts are reported in the Torsion and Rings columns. '-' means no outliers of that kind were identified.

Mol	Type	Chain	Res	Link	Chirals	Torsions	Rings
3	ADP	B	802	2	-	5/12/32/32	0/3/3/3
3	ADP	A	802	2	-	6/12/32/32	0/3/3/3

All (3) bond length outliers are listed below:

Mol	Chain	Res	Type	Atoms	Z	Observed(Å)	Ideal(Å)
3	A	802	ADP	C2-N3	2.64	1.36	1.32
3	A	802	ADP	C5-C4	2.39	1.47	1.40
3	B	802	ADP	C5-C4	2.28	1.47	1.40

All (9) bond angle outliers are listed below:

Mol	Chain	Res	Type	Atoms	Z	Observed(°)	Ideal(°)
3	B	802	ADP	N3-C2-N1	-3.79	122.76	128.68
3	A	802	ADP	N3-C2-N1	-3.68	122.93	128.68
3	B	802	ADP	PA-O3A-PB	-3.49	120.85	132.83
3	A	802	ADP	PA-O3A-PB	-3.28	121.57	132.83
3	A	802	ADP	C3'-C2'-C1'	2.84	105.25	100.98
3	B	802	ADP	C4-C5-N7	-2.80	106.48	109.40
3	A	802	ADP	C2'-C3'-C4'	2.44	107.39	102.64
3	A	802	ADP	C4-C5-N7	-2.29	107.02	109.40
3	A	802	ADP	O3B-PB-O3A	2.05	111.50	104.64

There are no chirality outliers.

All (11) torsion outliers are listed below:

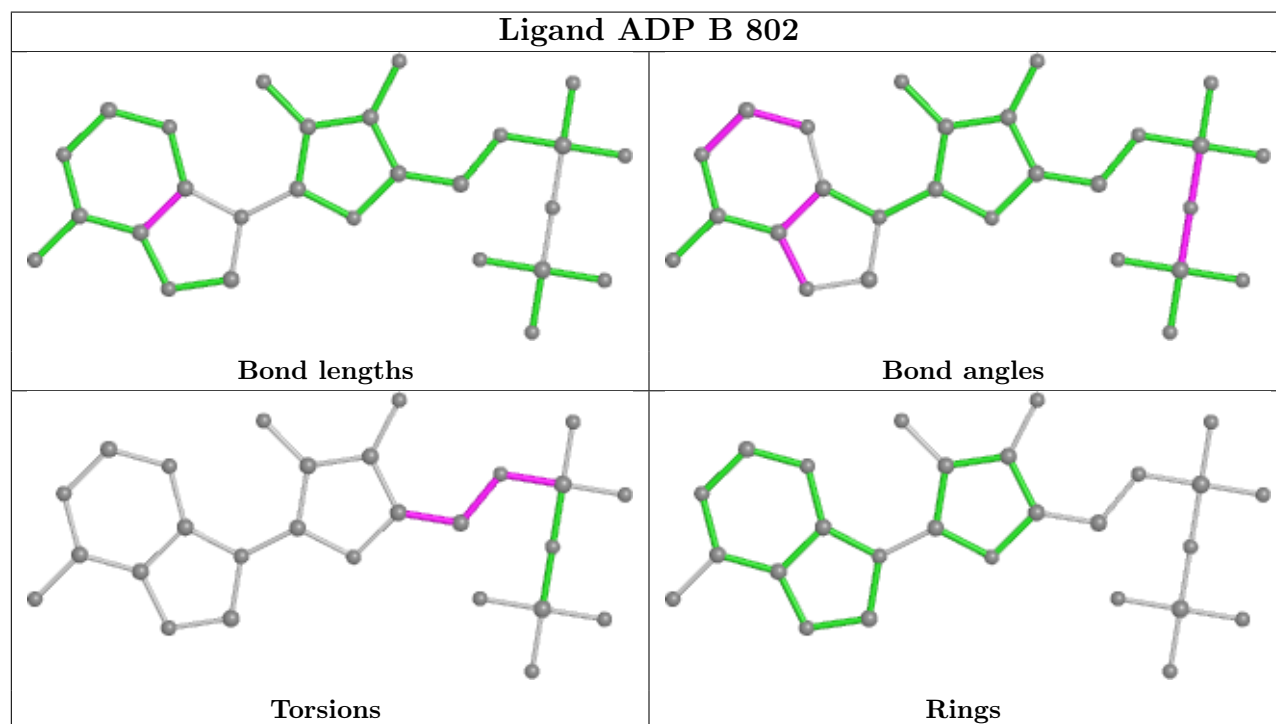
Mol	Chain	Res	Type	Atoms
3	A	802	ADP	C5'-O5'-PA-O2A
3	B	802	ADP	C5'-O5'-PA-O3A
3	A	802	ADP	O4'-C4'-C5'-O5'
3	B	802	ADP	O4'-C4'-C5'-O5'
3	B	802	ADP	C3'-C4'-C5'-O5'
3	A	802	ADP	C3'-C4'-C5'-O5'
3	A	802	ADP	C5'-O5'-PA-O3A
3	B	802	ADP	C5'-O5'-PA-O1A
3	A	802	ADP	C4'-C5'-O5'-PA
3	B	802	ADP	C4'-C5'-O5'-PA
3	A	802	ADP	C5'-O5'-PA-O1A

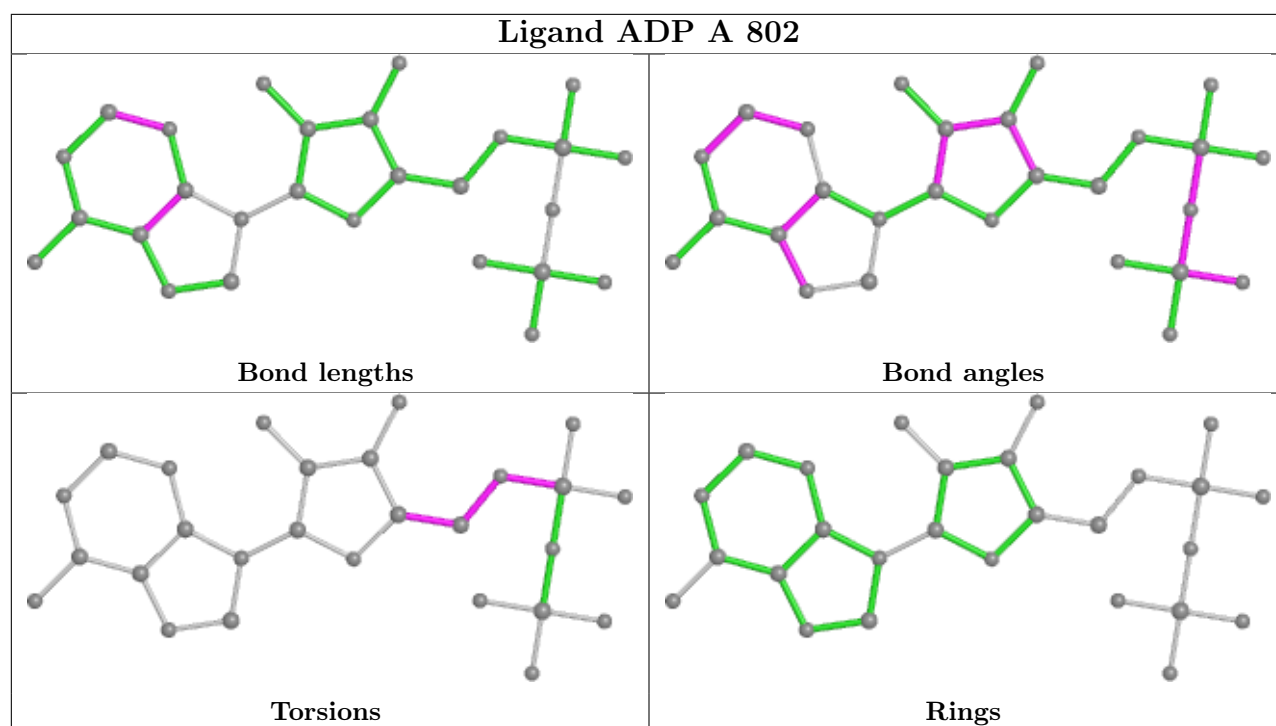
There are no ring outliers.

2 monomers are involved in 4 short contacts:

Mol	Chain	Res	Type	Clashes	Symm-Clashes
3	B	802	ADP	1	0
3	A	802	ADP	3	0

The following is a two-dimensional graphical depiction of Mogul quality analysis of bond lengths, bond angles, torsion angles, and ring geometry for all instances of the Ligand of Interest. In addition, ligands with molecular weight > 250 and outliers as shown on the validation Tables will also be included. For torsion angles, if less than 5% of the Mogul distribution of torsion angles is within 10 degrees of the torsion angle in question, then that torsion angle is considered an outlier. Any bond that is central to one or more torsion angles identified as an outlier by Mogul will be highlighted in the graph. For rings, the root-mean-square deviation (RMSD) between the ring in question and similar rings identified by Mogul is calculated over all ring torsion angles. If the average RMSD is greater than 60 degrees and the minimal RMSD between the ring in question and any Mogul-identified rings is also greater than 60 degrees, then that ring is considered an outlier. The outliers are highlighted in purple. The color gray indicates Mogul did not find sufficient equivalents in the CSD to analyse the geometry.





## 5.7 Other polymers [i](#)

There are no such residues in this entry.

## 5.8 Polymer linkage issues [i](#)

There are no chain breaks in this entry.



## 6 Fit of model and data

### 6.1 Protein, DNA and RNA chains

In the following table, the column labelled ‘#RSRZ> 2’ contains the number (and percentage) of RSRZ outliers, followed by percent RSRZ outliers for the chain as percentile scores relative to all X-ray entries and entries of similar resolution. The OWAB column contains the minimum, median, 95<sup>th</sup> percentile and maximum values of the occupancy-weighted average B-factor per residue. The column labelled ‘Q< 0.9’ lists the number of (and percentage) of residues with an average occupancy less than 0.9.

Mol	Chain	Analysed	<RSRZ>	#RSRZ>2	OWAB(Å <sup>2</sup> )	Q<0.9
1	A	354/412 (85%)	0.36	5 (1%) 75 70	45, 69, 103, 115	0
1	B	313/412 (75%)	0.72	34 (10%) 5 3	51, 91, 129, 140	0
All	All	667/824 (80%)	0.53	39 (5%) 23 15	45, 78, 123, 140	0

All (39) RSRZ outliers are listed below:

Mol	Chain	Res	Type	RSRZ
1	B	468	TYR	5.9
1	B	561	LEU	5.3
1	B	572	SER	4.8
1	B	489	LEU	4.7
1	B	564	ARG	4.3
1	B	485	TYR	4.1
1	B	563	GLY	3.9
1	B	523	LEU	3.7
1	B	481	PHE	3.5
1	B	490	TYR	3.4
1	A	305	GLN	3.4
1	B	558	LYS	3.3
1	B	520	GLU	3.3
1	B	573	VAL	3.3
1	B	385	ALA	3.2
1	B	528	LEU	3.2
1	B	466	ARG	3.2
1	A	309	GLU	3.1
1	B	622	TYR	3.1
1	B	562	ILE	3.0
1	B	560	GLU	3.0
1	B	431	PHE	2.9
1	B	366	MET	2.9
1	B	475	TYR	2.8

*Continued on next page...*

*Continued from previous page...*

Mol	Chain	Res	Type	RSRZ
1	B	478	LYS	2.8
1	B	532	MET	2.7
1	B	307	THR	2.6
1	B	492	LEU	2.6
1	B	480	THR	2.4
1	B	578	LEU	2.4
1	B	574	GLY	2.3
1	B	519	GLU	2.3
1	B	651	GLN	2.3
1	A	362	GLU	2.3
1	B	296	LEU	2.3
1	A	618	ASP	2.2
1	B	473	TRP	2.2
1	A	493	LEU	2.2
1	B	419	ILE	2.0

## 6.2 Non-standard residues in protein, DNA, RNA chains [i](#)

There are no non-standard protein/DNA/RNA residues in this entry.

## 6.3 Carbohydrates [i](#)

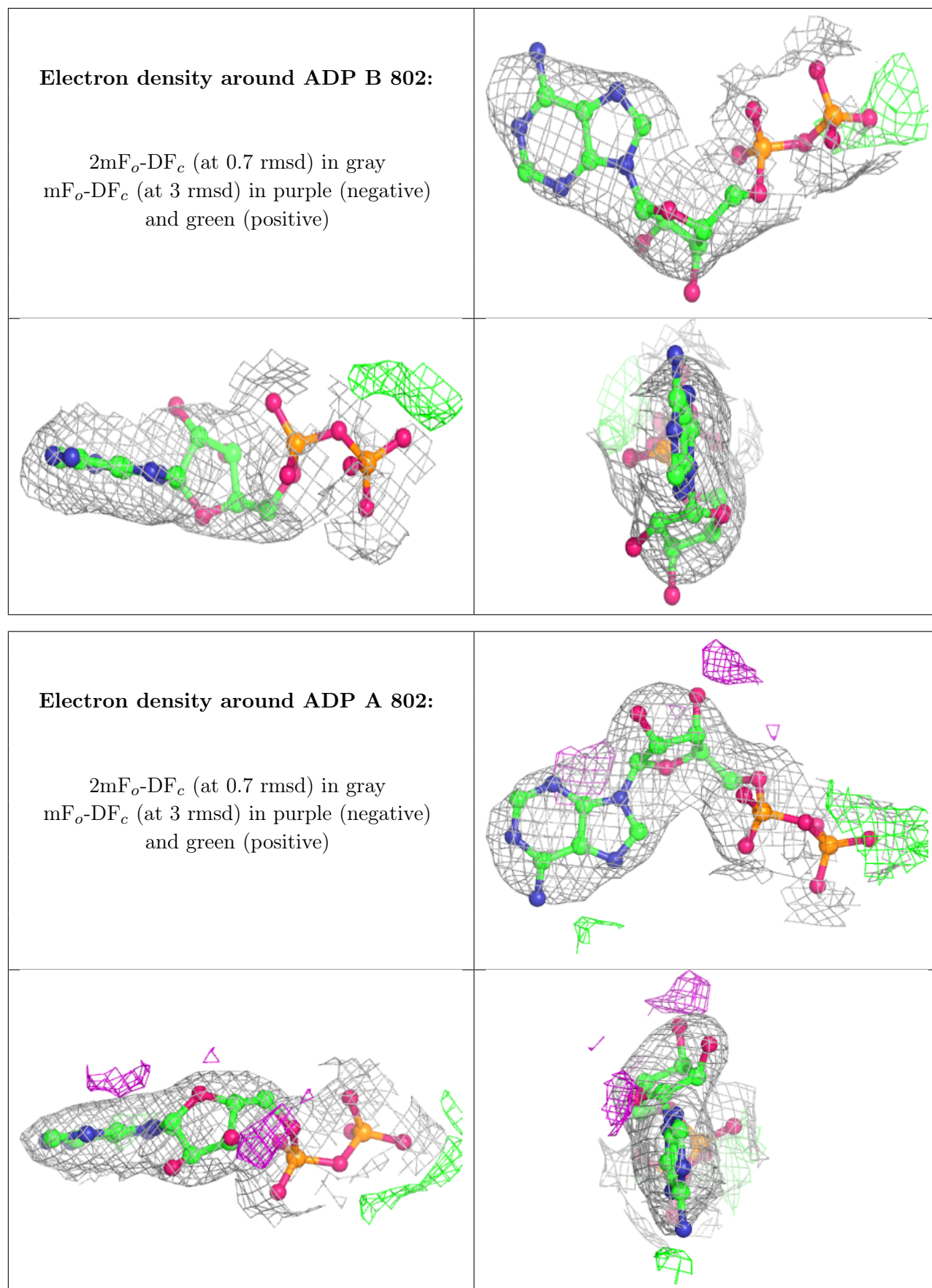
There are no monosaccharides in this entry.

## 6.4 Ligands [i](#)

In the following table, the Atoms column lists the number of modelled atoms in the group and the number defined in the chemical component dictionary. The B-factors column lists the minimum, median, 95<sup>th</sup> percentile and maximum values of B factors of atoms in the group. The column labelled 'Q< 0.9' lists the number of atoms with occupancy less than 0.9.

Mol	Type	Chain	Res	Atoms	RSCC	RSR	B-factors(Å <sup>2</sup> )	Q<0.9
2	MG	A	801	1/1	0.84	0.30	63,63,63,63	0
2	MG	B	801	1/1	0.90	0.37	82,82,82,82	0
3	ADP	B	802	27/27	0.94	0.20	83,100,105,107	0
3	ADP	A	802	27/27	0.97	0.20	65,73,81,86	0

The following is a graphical depiction of the model fit to experimental electron density of all instances of the Ligand of Interest. In addition, ligands with molecular weight > 250 and outliers as shown on the geometry validation Tables will also be included. Each fit is shown from different orientation to approximate a three-dimensional view.



## 6.5 Other polymers [i](#)

There are no such residues in this entry.