



wwPDB EM Validation Summary Report ⓘ

Nov 4, 2024 – 07:32 PM JST

PDB ID : 8W4A
EMDB ID : EMD-37264
Title : membrane proteins
Authors : Yu, J.; Ge, J.P.; Xu, R.S.
Deposited on : 2023-08-23
Resolution : 2.69 Å(reported)

This is a wwPDB EM Validation Summary Report for a publicly released PDB entry.

We welcome your comments at validation@mail.wwpdb.org

A user guide is available at

<https://www.wwpdb.org/validation/2017/EMValidationReportHelp>

with specific help available everywhere you see the ⓘ symbol.

The types of validation reports are described at

<http://www.wwpdb.org/validation/2017/FAQs#types>.

The following versions of software and data (see [references ⓘ](#)) were used in the production of this report:

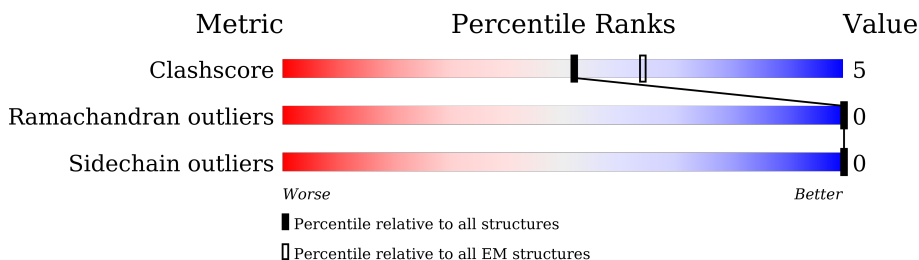
EMDB validation analysis : 0.0.1.dev113
Mogul : 1.8.5 (274361), CSD as541be (2020)
MolProbity : 4.02b-467
buster-report : 1.1.7 (2018)
Percentile statistics : 20231227.v01 (using entries in the PDB archive December 27th 2023)
MapQ : 1.9.13
Ideal geometry (proteins) : Engh & Huber (2001)
Ideal geometry (DNA, RNA) : Parkinson et al. (1996)
Validation Pipeline (wwPDB-VP) : 2.39

1 Overall quality at a glance

The following experimental techniques were used to determine the structure:
ELECTRON MICROSCOPY

The reported resolution of this entry is 2.69 Å.

Percentile scores (ranging between 0-100) for global validation metrics of the entry are shown in the following graphic. The table shows the number of entries on which the scores are based.



Metric	Whole archive (#Entries)	EM structures (#Entries)
Clashscore	210492	15764
Ramachandran outliers	207382	16835
Sidechain outliers	206894	16415

The table below summarises the geometric issues observed across the polymeric chains and their fit to the map. The red, orange, yellow and green segments of the bar indicate the fraction of residues that contain outliers for ≥ 3 , 2, 1 and 0 types of geometric quality criteria respectively. A grey segment represents the fraction of residues that are not modelled. The numeric value for each fraction is indicated below the corresponding segment, with a dot representing fractions $\leq 5\%$. The upper red bar (where present) indicates the fraction of residues that have poor fit to the EM map (all-atom inclusion $< 40\%$). The numeric value is given above the bar.

Mol	Chain	Length	Quality of chain
1	A	706	
1	B	706	
2	C	2	
2	D	2	
2	E	2	
2	F	2	

2 Entry composition [i](#)

There are 12 unique types of molecules in this entry. The entry contains 9588 atoms, of which 0 are hydrogens and 0 are deuteriums.

In the tables below, the AltConf column contains the number of residues with at least one atom in alternate conformation and the Trace column contains the number of residues modelled with at most 2 atoms.

- Molecule 1 is a protein called Heparan-alpha-glucosaminide N-acetyltransferase.

Mol	Chain	Residues	Atoms					AltConf	Trace
			Total	C	N	O	S		
1	B	533	4230	2810	678	723	19	0	0
1	A	533	4230	2810	678	723	19	0	0

There are 86 discrepancies between the modelled and reference sequences:

Chain	Residue	Modelled	Actual	Comment	Reference
B	664	GLY	-	expression tag	UNP Q68CP4
B	665	SER	-	expression tag	UNP Q68CP4
B	666	GLY	-	expression tag	UNP Q68CP4
B	667	GLY	-	expression tag	UNP Q68CP4
B	668	GLY	-	expression tag	UNP Q68CP4
B	669	GLY	-	expression tag	UNP Q68CP4
B	670	SER	-	expression tag	UNP Q68CP4
B	671	GLY	-	expression tag	UNP Q68CP4
B	672	GLY	-	expression tag	UNP Q68CP4
B	673	GLY	-	expression tag	UNP Q68CP4
B	674	GLY	-	expression tag	UNP Q68CP4
B	675	SER	-	expression tag	UNP Q68CP4
B	676	GLY	-	expression tag	UNP Q68CP4
B	677	GLY	-	expression tag	UNP Q68CP4
B	678	GLY	-	expression tag	UNP Q68CP4
B	679	TRP	-	expression tag	UNP Q68CP4
B	680	SER	-	expression tag	UNP Q68CP4
B	681	HIS	-	expression tag	UNP Q68CP4
B	682	PRO	-	expression tag	UNP Q68CP4
B	683	GLN	-	expression tag	UNP Q68CP4
B	684	PHE	-	expression tag	UNP Q68CP4
B	685	GLU	-	expression tag	UNP Q68CP4
B	686	LYS	-	expression tag	UNP Q68CP4
B	687	GLY	-	expression tag	UNP Q68CP4
B	688	GLY	-	expression tag	UNP Q68CP4
B	689	GLY	-	expression tag	UNP Q68CP4

Continued on next page...

Continued from previous page...

Chain	Residue	Modelled	Actual	Comment	Reference
B	690	SER	-	expression tag	UNP Q68CP4
B	691	GLY	-	expression tag	UNP Q68CP4
B	692	GLY	-	expression tag	UNP Q68CP4
B	693	GLY	-	expression tag	UNP Q68CP4
B	694	SER	-	expression tag	UNP Q68CP4
B	695	GLY	-	expression tag	UNP Q68CP4
B	696	GLY	-	expression tag	UNP Q68CP4
B	697	SER	-	expression tag	UNP Q68CP4
B	698	ALA	-	expression tag	UNP Q68CP4
B	699	TRP	-	expression tag	UNP Q68CP4
B	700	SER	-	expression tag	UNP Q68CP4
B	701	HIS	-	expression tag	UNP Q68CP4
B	702	PRO	-	expression tag	UNP Q68CP4
B	703	GLN	-	expression tag	UNP Q68CP4
B	704	PHE	-	expression tag	UNP Q68CP4
B	705	GLU	-	expression tag	UNP Q68CP4
B	706	LYS	-	expression tag	UNP Q68CP4
A	664	GLY	-	expression tag	UNP Q68CP4
A	665	SER	-	expression tag	UNP Q68CP4
A	666	GLY	-	expression tag	UNP Q68CP4
A	667	GLY	-	expression tag	UNP Q68CP4
A	668	GLY	-	expression tag	UNP Q68CP4
A	669	GLY	-	expression tag	UNP Q68CP4
A	670	SER	-	expression tag	UNP Q68CP4
A	671	GLY	-	expression tag	UNP Q68CP4
A	672	GLY	-	expression tag	UNP Q68CP4
A	673	GLY	-	expression tag	UNP Q68CP4
A	674	GLY	-	expression tag	UNP Q68CP4
A	675	SER	-	expression tag	UNP Q68CP4
A	676	GLY	-	expression tag	UNP Q68CP4
A	677	GLY	-	expression tag	UNP Q68CP4
A	678	GLY	-	expression tag	UNP Q68CP4
A	679	TRP	-	expression tag	UNP Q68CP4
A	680	SER	-	expression tag	UNP Q68CP4
A	681	HIS	-	expression tag	UNP Q68CP4
A	682	PRO	-	expression tag	UNP Q68CP4
A	683	GLN	-	expression tag	UNP Q68CP4
A	684	PHE	-	expression tag	UNP Q68CP4
A	685	GLU	-	expression tag	UNP Q68CP4
A	686	LYS	-	expression tag	UNP Q68CP4
A	687	GLY	-	expression tag	UNP Q68CP4
A	688	GLY	-	expression tag	UNP Q68CP4

Continued on next page...

Continued from previous page...

Chain	Residue	Modelled	Actual	Comment	Reference
A	689	GLY	-	expression tag	UNP Q68CP4
A	690	SER	-	expression tag	UNP Q68CP4
A	691	GLY	-	expression tag	UNP Q68CP4
A	692	GLY	-	expression tag	UNP Q68CP4
A	693	GLY	-	expression tag	UNP Q68CP4
A	694	SER	-	expression tag	UNP Q68CP4
A	695	GLY	-	expression tag	UNP Q68CP4
A	696	GLY	-	expression tag	UNP Q68CP4
A	697	SER	-	expression tag	UNP Q68CP4
A	698	ALA	-	expression tag	UNP Q68CP4
A	699	TRP	-	expression tag	UNP Q68CP4
A	700	SER	-	expression tag	UNP Q68CP4
A	701	HIS	-	expression tag	UNP Q68CP4
A	702	PRO	-	expression tag	UNP Q68CP4
A	703	GLN	-	expression tag	UNP Q68CP4
A	704	PHE	-	expression tag	UNP Q68CP4
A	705	GLU	-	expression tag	UNP Q68CP4
A	706	LYS	-	expression tag	UNP Q68CP4

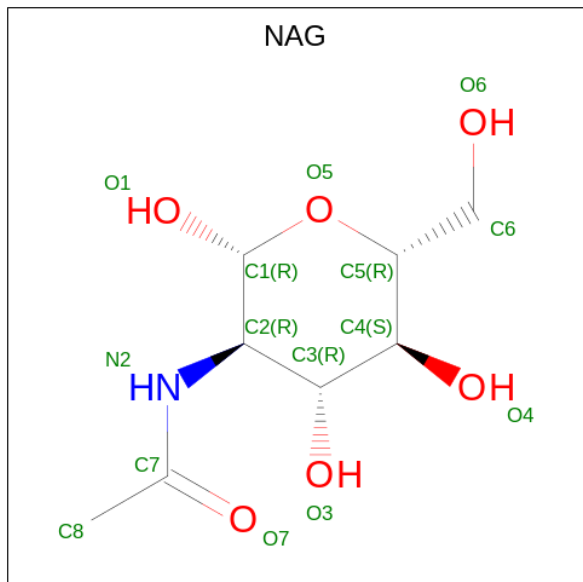
- Molecule 2 is an oligosaccharide called 2-acetamido-2-deoxy-beta-D-glucopyranose-(1-4)-2-acetamido-2-deoxy-beta-D-glucopyranose.



Mol	Chain	Residues	Atoms			AltConf	Trace	
			Total	C	N			O
2	C	2	28	16	2	10	0	0
2	D	2	28	16	2	10	0	0
2	E	2	28	16	2	10	0	0
2	F	2	28	16	2	10	0	0

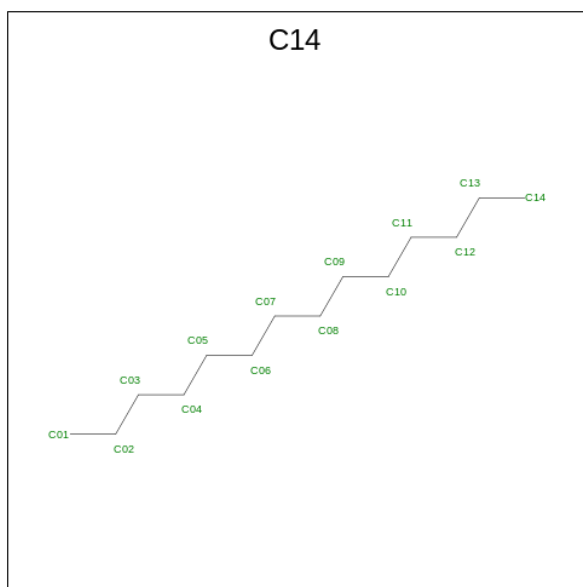
- Molecule 3 is {N}-[(2 {S},3 {R},4 {R},5 {S},6 {R})-6-(hydroxymethyl)-2-[[[(2 {R},4 {R})-4-methyl-2-oxidanyl-3,4-dihydro-2 {H}-chromen-7-yl]oxy]-4,5-bis(oxidanyl)oxan-3-yl]ethanamide (three-letter code: UV6) (formula: C₁₈H₂₅NO₈) (labeled as "Ligand of Interest" by depositor).

- Molecule 5 is 2-acetamido-2-deoxy-beta-D-glucopyranose (three-letter code: NAG) (formula: $C_8H_{15}NO_6$).



Mol	Chain	Residues	Atoms				AltConf
			Total	C	N	O	
5	B	1	14	8	1	5	0
5	A	1	14	8	1	5	0

- Molecule 6 is TETRADECANE (three-letter code: C14) (formula: $C_{14}H_{30}$).



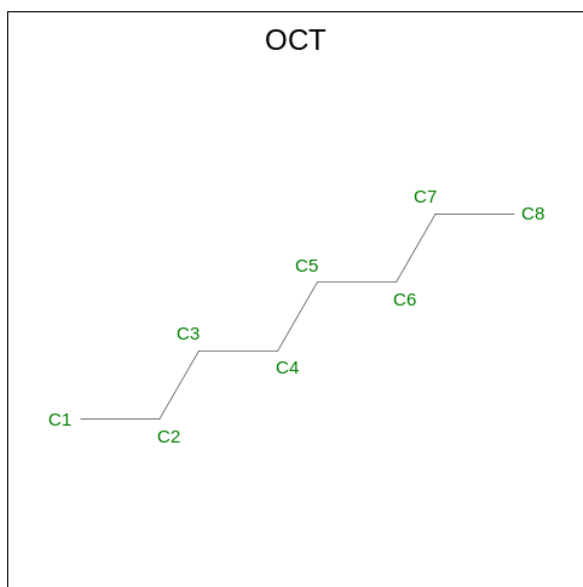
Mol	Chain	Residues	Atoms	AltConf
6	B	1	Total C 14 14	0
6	B	1	Total C 14 14	0
6	B	1	Total C 14 14	0
6	B	1	Total C 14 14	0
6	B	1	Total C 14 14	0
6	B	1	Total C 14 14	0
6	B	1	Total C 14 14	0
6	B	1	Total C 14 14	0
6	B	1	Total C 14 14	0
6	B	1	Total C 14 14	0
6	B	1	Total C 14 14	0
6	B	1	Total C 14 14	0
6	B	1	Total C 14 14	0
6	A	1	Total C 14 14	0
6	A	1	Total C 14 14	0
6	A	1	Total C 14 14	0
6	A	1	Total C 14 14	0
6	A	1	Total C 14 14	0
6	A	1	Total C 14 14	0
6	A	1	Total C 14 14	0
6	A	1	Total C 14 14	0
6	A	1	Total C 14 14	0
6	A	1	Total C 14 14	0

Continued on next page...

Continued from previous page...

Mol	Chain	Residues	Atoms	AltConf
6	A	1	Total C 14 14	0
6	A	1	Total C 14 14	0

- Molecule 7 is N-OCTANE (three-letter code: OCT) (formula: C₈H₁₈).



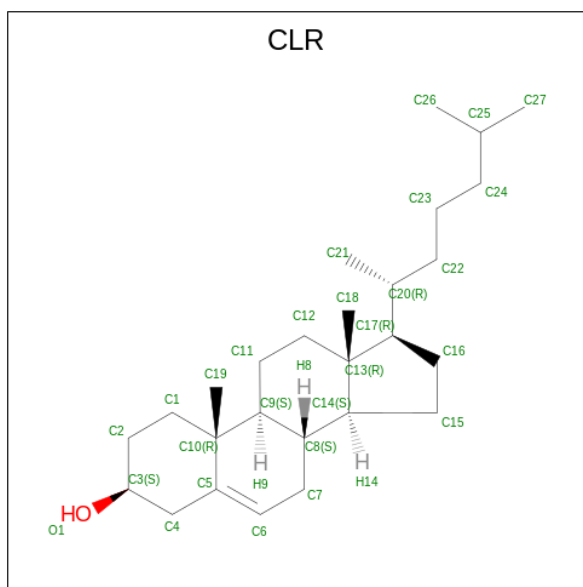
Mol	Chain	Residues	Atoms	AltConf
7	B	1	Total C 8 8	0
7	B	1	Total C 8 8	0
7	B	1	Total C 8 8	0
7	B	1	Total C 8 8	0
7	B	1	Total C 8 8	0
7	B	1	Total C 8 8	0
7	B	1	Total C 8 8	0
7	B	1	Total C 8 8	0
7	B	1	Total C 8 8	0

Continued on next page...

Continued from previous page...

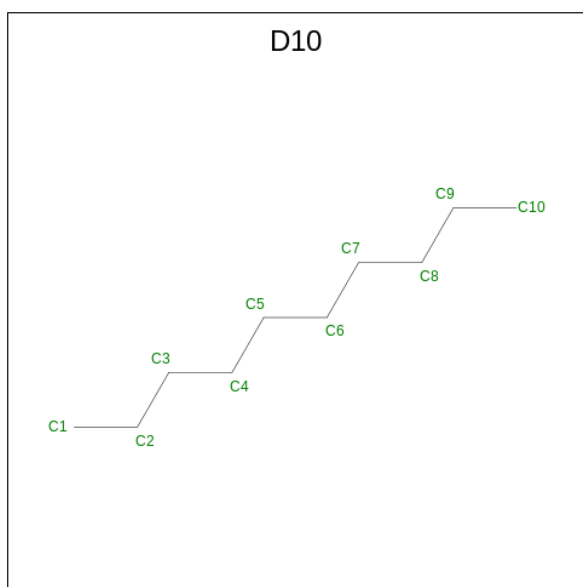
Mol	Chain	Residues	Atoms	AltConf
7	A	1	Total C 8 8	0
7	A	1	Total C 8 8	0

- Molecule 8 is CHOLESTEROL (three-letter code: CLR) (formula: $C_{27}H_{46}O$).



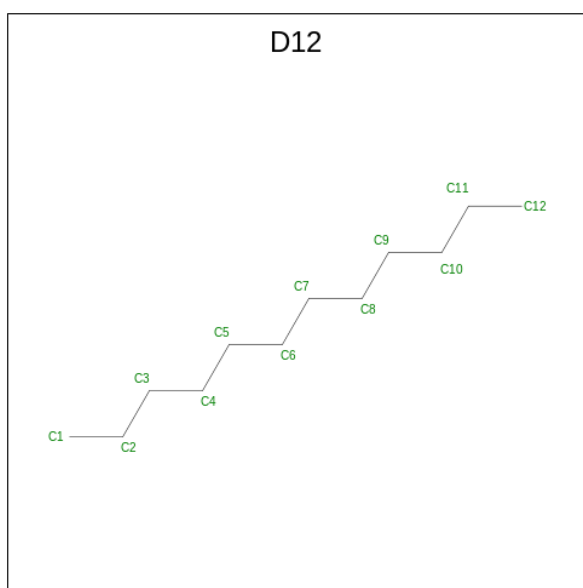
Mol	Chain	Residues	Atoms	AltConf
8	B	1	Total C O 28 27 1	0
8	B	1	Total C O 28 27 1	0
8	A	1	Total C O 28 27 1	0
8	A	1	Total C O 28 27 1	0

- Molecule 9 is DECANE (three-letter code: D10) (formula: $C_{10}H_{22}$).



Mol	Chain	Residues	Atoms	AltConf
9	B	1	Total C 10 10	0
9	A	1	Total C 10 10	0

- Molecule 10 is DODECANE (three-letter code: D12) (formula: $C_{12}H_{26}$).



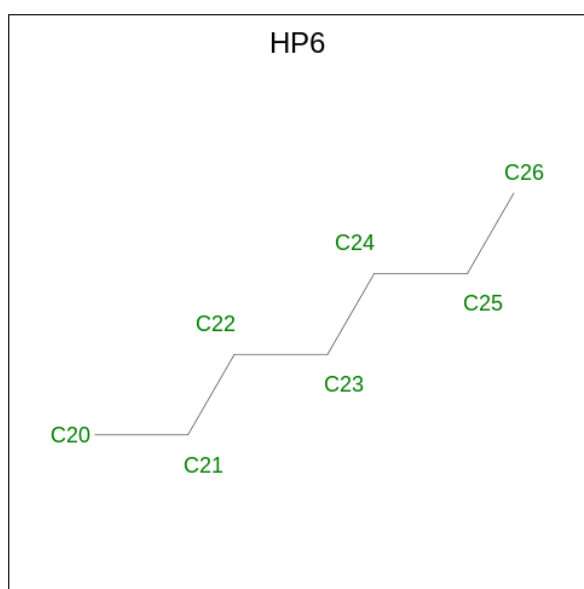
Mol	Chain	Residues	Atoms	AltConf
10	B	1	Total C 12 12	0
10	B	1	Total C 10 10	0

Continued on next page...

Continued from previous page...

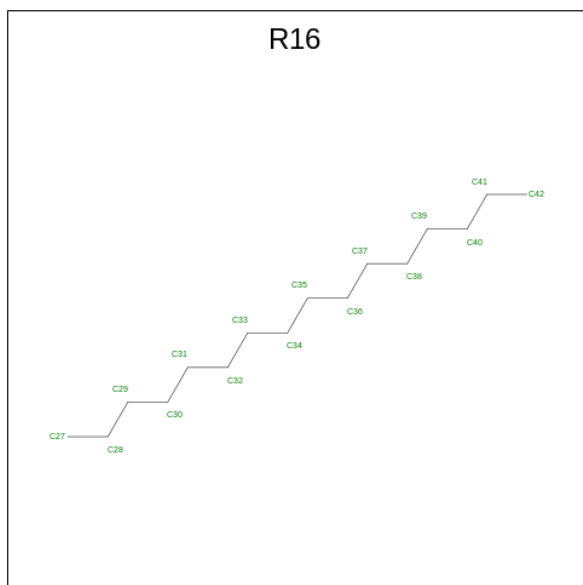
Mol	Chain	Residues	Atoms	AltConf
10	B	1	Total C 12 12	0
10	A	1	Total C 12 12	0
10	A	1	Total C 12 12	0
10	A	1	Total C 10 10	0

- Molecule 11 is HEPTANE (three-letter code: HP6) (formula: C_7H_{16}).

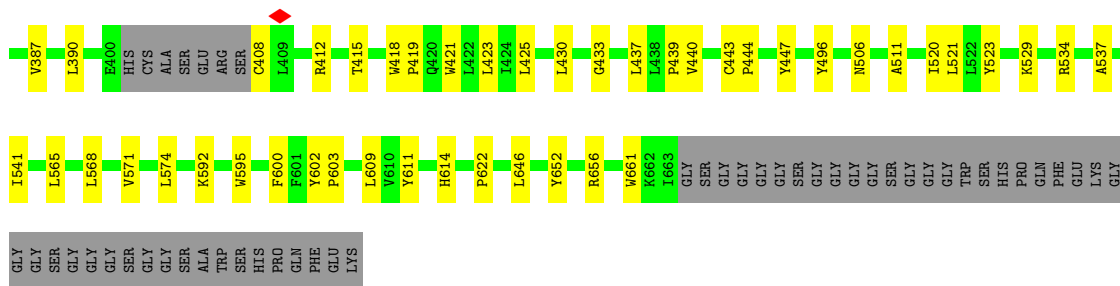


Mol	Chain	Residues	Atoms	AltConf
11	B	1	Total C 7 7	0
11	A	1	Total C 7 7	0

- Molecule 12 is HEXADECANE (three-letter code: R16) (formula: $C_{16}H_{34}$).



Mol	Chain	Residues	Atoms	AltConf
12	B	1	Total C 16 16	0
12	A	1	Total C 16 16	0



- Molecule 2: 2-acetamido-2-deoxy-beta-D-glucopyranose-(1-4)-2-acetamido-2-deoxy-beta-D-glucopyranose

Chain C:  100%



- Molecule 2: 2-acetamido-2-deoxy-beta-D-glucopyranose-(1-4)-2-acetamido-2-deoxy-beta-D-glucopyranose

Chain D:  100%



- Molecule 2: 2-acetamido-2-deoxy-beta-D-glucopyranose-(1-4)-2-acetamido-2-deoxy-beta-D-glucopyranose

Chain E:  100%



- Molecule 2: 2-acetamido-2-deoxy-beta-D-glucopyranose-(1-4)-2-acetamido-2-deoxy-beta-D-glucopyranose

Chain F:  50%  100%



4 Experimental information

Property	Value	Source
EM reconstruction method	SINGLE PARTICLE	Depositor
Imposed symmetry	POINT, Not provided	
Number of particles used	476448	Depositor
Resolution determination method	FSC 0.143 CUT-OFF	Depositor
CTF correction method	PHASE FLIPPING AND AMPLITUDE CORRECTION	Depositor
Microscope	FEI TITAN KRIOS	Depositor
Voltage (kV)	300	Depositor
Electron dose ($e^-/\text{\AA}^2$)	50	Depositor
Minimum defocus (nm)	800	Depositor
Maximum defocus (nm)	2000	Depositor
Magnification	Not provided	
Image detector	GATAN K3 (6k x 4k)	Depositor
Maximum map value	2.476	Depositor
Minimum map value	-1.376	Depositor
Average map value	0.001	Depositor
Map value standard deviation	0.035	Depositor
Recommended contour level	0.17	Depositor
Map size (Å)	332.0, 332.0, 332.0	wwPDB
Map dimensions	400, 400, 400	wwPDB
Map angles (°)	90.0, 90.0, 90.0	wwPDB
Pixel spacing (Å)	0.83, 0.83, 0.83	Depositor

5 Model quality [i](#)

5.1 Standard geometry [i](#)

Bond lengths and bond angles in the following residue types are not validated in this section: C14, HP6, OCT, D10, CLR, ACO, R16, UV6, D12, NAG

The Z score for a bond length (or angle) is the number of standard deviations the observed value is removed from the expected value. A bond length (or angle) with $|Z| > 5$ is considered an outlier worth inspection. RMSZ is the root-mean-square of all Z scores of the bond lengths (or angles).

Mol	Chain	Bond lengths		Bond angles	
		RMSZ	# Z >5	RMSZ	# Z >5
1	A	0.26	0/4350	0.43	0/5930
1	B	0.26	0/4350	0.43	0/5930
All	All	0.26	0/8700	0.43	0/11860

There are no bond length outliers.

There are no bond angle outliers.

There are no chirality outliers.

There are no planarity outliers.

5.2 Too-close contacts [i](#)

In the following table, the Non-H and H(model) columns list the number of non-hydrogen atoms and hydrogen atoms in the chain respectively. The H(added) column lists the number of hydrogen atoms added and optimized by MolProbity. The Clashes column lists the number of clashes within the asymmetric unit, whereas Symm-Clashes lists symmetry-related clashes.

Mol	Chain	Non-H	H(model)	H(added)	Clashes	Symm-Clashes
1	A	4230	0	4304	45	0
1	B	4230	0	4304	50	0
2	C	28	0	25	0	0
2	D	28	0	25	0	0
2	E	28	0	25	0	0
2	F	28	0	25	0	0
3	A	27	0	0	0	0
3	B	27	0	0	1	0
4	A	48	0	31	3	0
4	B	48	0	31	2	0
5	A	14	0	13	0	0

Continued on next page...

Continued from previous page...

Mol	Chain	Non-H	H(model)	H(added)	Clashes	Symm-Clashes
5	B	14	0	13	0	0
6	A	168	0	360	8	0
6	B	168	0	360	10	0
7	A	128	0	288	0	0
7	B	128	0	288	1	0
8	A	56	0	92	10	0
8	B	56	0	92	8	0
9	A	10	0	22	0	0
9	B	10	0	22	0	0
10	A	34	0	71	0	0
10	B	34	0	71	1	0
11	A	7	0	16	1	0
11	B	7	0	16	1	0
12	A	16	0	34	0	0
12	B	16	0	34	0	0
All	All	9588	0	10562	105	0

The all-atom clashscore is defined as the number of clashes found per 1000 atoms (including hydrogen atoms). The all-atom clashscore for this structure is 5.

The worst 5 of 105 close contacts within the same asymmetric unit are listed below, sorted by their clash magnitude.

Atom-1	Atom-2	Interatomic distance (Å)	Clash overlap (Å)
1:B:595:TRP:HB2	8:B:827:CLR:H183	1.67	0.76
1:A:595:TRP:HB2	8:A:828:CLR:H183	1.69	0.75
1:A:652:TYR:OH	1:A:656:ARG:NH2	2.21	0.73
1:B:394:PHE:HB2	1:B:420:GLN:NE2	2.09	0.67
1:B:347:PHE:HB2	6:B:804:C14:H072	1.80	0.64

There are no symmetry-related clashes.

5.3 Torsion angles [i](#)

5.3.1 Protein backbone [i](#)

In the following table, the Percentiles column shows the percent Ramachandran outliers of the chain as a percentile score with respect to all PDB entries followed by that with respect to all EM entries.

The Analysed column shows the number of residues for which the backbone conformation was analysed, and the total number of residues.

Mol	Chain	Analysed	Favoured	Allowed	Outliers	Percentiles	
1	A	527/706 (75%)	520 (99%)	7 (1%)	0	100	100
1	B	527/706 (75%)	520 (99%)	7 (1%)	0	100	100
All	All	1054/1412 (75%)	1040 (99%)	14 (1%)	0	100	100

There are no Ramachandran outliers to report.

5.3.2 Protein sidechains [i](#)

In the following table, the Percentiles column shows the percent sidechain outliers of the chain as a percentile score with respect to all PDB entries followed by that with respect to all EM entries.

The Analysed column shows the number of residues for which the sidechain conformation was analysed, and the total number of residues.

Mol	Chain	Analysed	Rotameric	Outliers	Percentiles	
1	A	462/577 (80%)	462 (100%)	0	100	100
1	B	462/577 (80%)	462 (100%)	0	100	100
All	All	924/1154 (80%)	924 (100%)	0	100	100

There are no protein residues with a non-rotameric sidechain to report.

Sometimes sidechains can be flipped to improve hydrogen bonding and reduce clashes. All (1) such sidechains are listed below:

Mol	Chain	Res	Type
1	B	286	ASN

5.3.3 RNA [i](#)

There are no RNA molecules in this entry.

5.4 Non-standard residues in protein, DNA, RNA chains [i](#)

There are no non-standard protein/DNA/RNA residues in this entry.

5.5 Carbohydrates [i](#)

8 monosaccharides are modelled in this entry.

In the following table, the Counts columns list the number of bonds (or angles) for which Mogul statistics could be retrieved, the number of bonds (or angles) that are observed in the model and the number of bonds (or angles) that are defined in the Chemical Component Dictionary. The Link column lists molecule types, if any, to which the group is linked. The Z score for a bond length (or angle) is the number of standard deviations the observed value is removed from the expected value. A bond length (or angle) with $|Z| > 2$ is considered an outlier worth inspection. RMSZ is the root-mean-square of all Z scores of the bond lengths (or angles).

Mol	Type	Chain	Res	Link	Bond lengths			Bond angles		
					Counts	RMSZ	# Z > 2	Counts	RMSZ	# Z > 2
2	NAG	C	1	1,2	14,14,15	0.25	0	17,19,21	0.46	0
2	NAG	C	2	2	14,14,15	0.21	0	17,19,21	0.41	0
2	NAG	D	1	1,2	14,14,15	0.25	0	17,19,21	0.48	0
2	NAG	D	2	2	14,14,15	0.23	0	17,19,21	0.41	0
2	NAG	E	1	1,2	14,14,15	0.25	0	17,19,21	0.47	0
2	NAG	E	2	2	14,14,15	0.23	0	17,19,21	0.42	0
2	NAG	F	1	1,2	14,14,15	0.27	0	17,19,21	0.48	0
2	NAG	F	2	2	14,14,15	0.23	0	17,19,21	0.40	0

In the following table, the Chirals column lists the number of chiral outliers, the number of chiral centers analysed, the number of these observed in the model and the number defined in the Chemical Component Dictionary. Similar counts are reported in the Torsion and Rings columns. '-' means no outliers of that kind were identified.

Mol	Type	Chain	Res	Link	Chirals	Torsions	Rings
2	NAG	C	1	1,2	-	2/6/23/26	0/1/1/1
2	NAG	C	2	2	-	0/6/23/26	0/1/1/1
2	NAG	D	1	1,2	-	2/6/23/26	0/1/1/1
2	NAG	D	2	2	-	2/6/23/26	0/1/1/1
2	NAG	E	1	1,2	-	2/6/23/26	0/1/1/1
2	NAG	E	2	2	-	0/6/23/26	0/1/1/1
2	NAG	F	1	1,2	-	2/6/23/26	0/1/1/1
2	NAG	F	2	2	-	2/6/23/26	0/1/1/1

There are no bond length outliers.

There are no bond angle outliers.

There are no chirality outliers.

5 of 12 torsion outliers are listed below:

Mol	Chain	Res	Type	Atoms
2	C	1	NAG	O5-C5-C6-O6
2	E	1	NAG	O5-C5-C6-O6

Continued on next page...

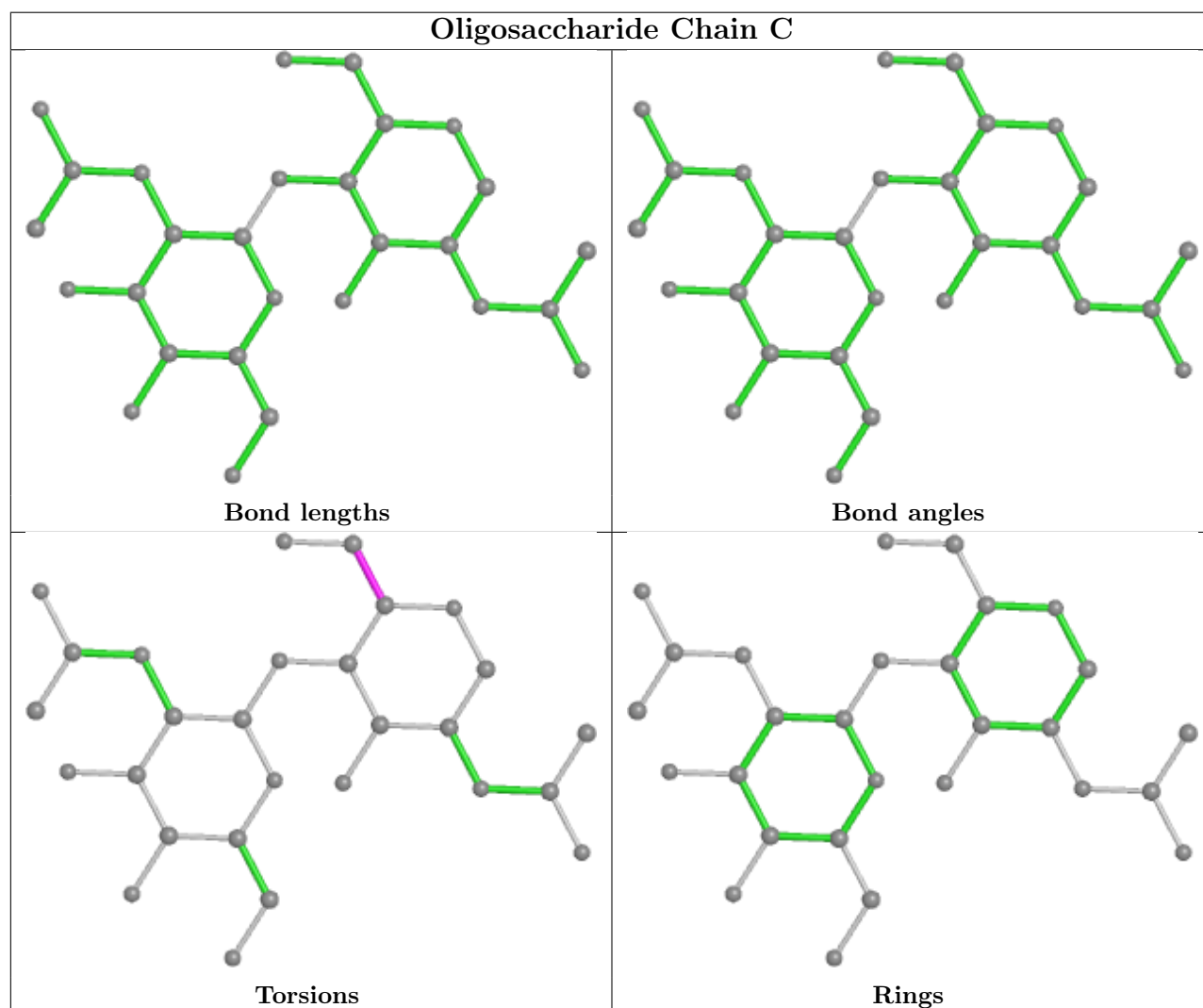
Continued from previous page...

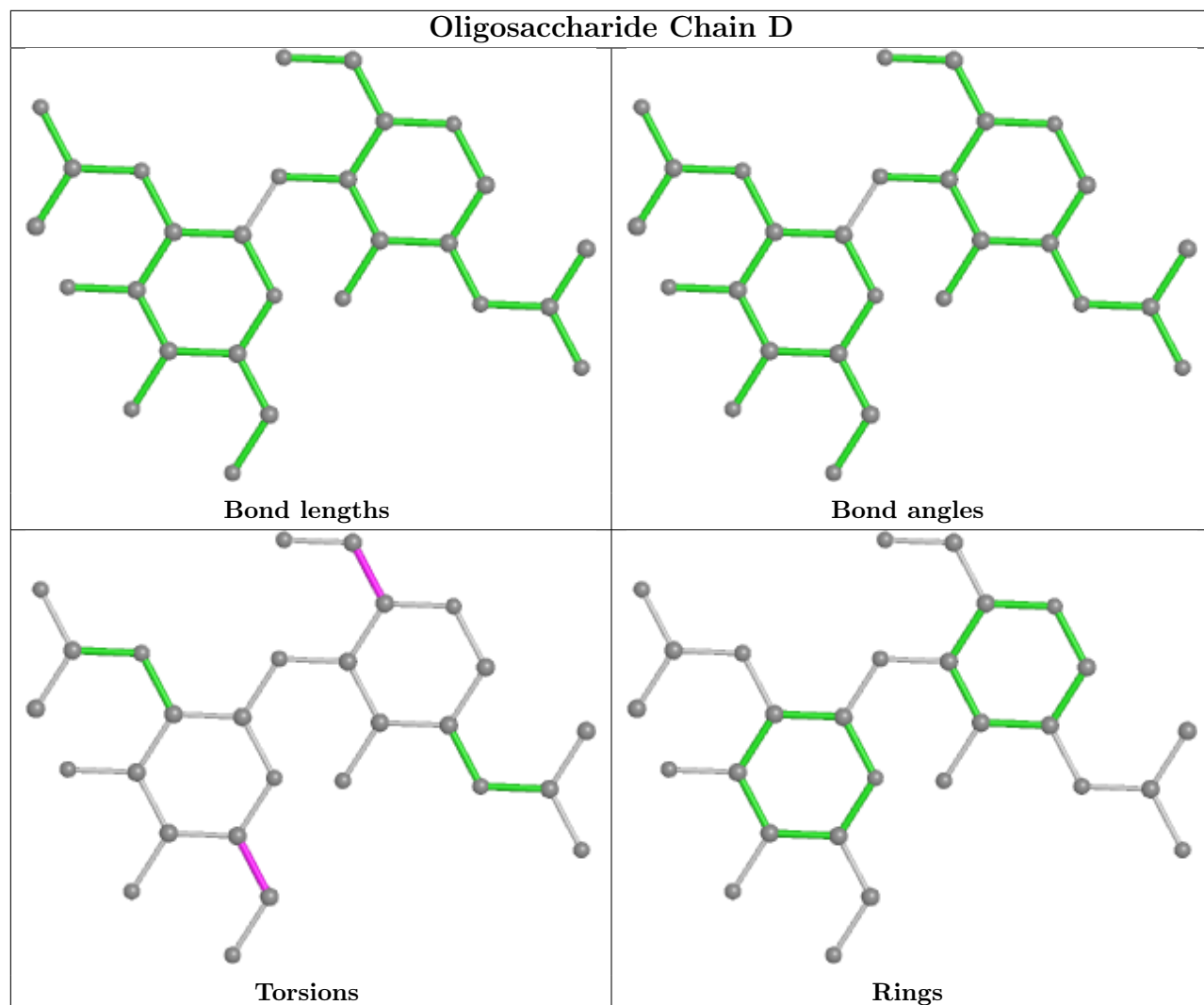
Mol	Chain	Res	Type	Atoms
2	E	1	NAG	C4-C5-C6-O6
2	C	1	NAG	C4-C5-C6-O6
2	F	1	NAG	C4-C5-C6-O6

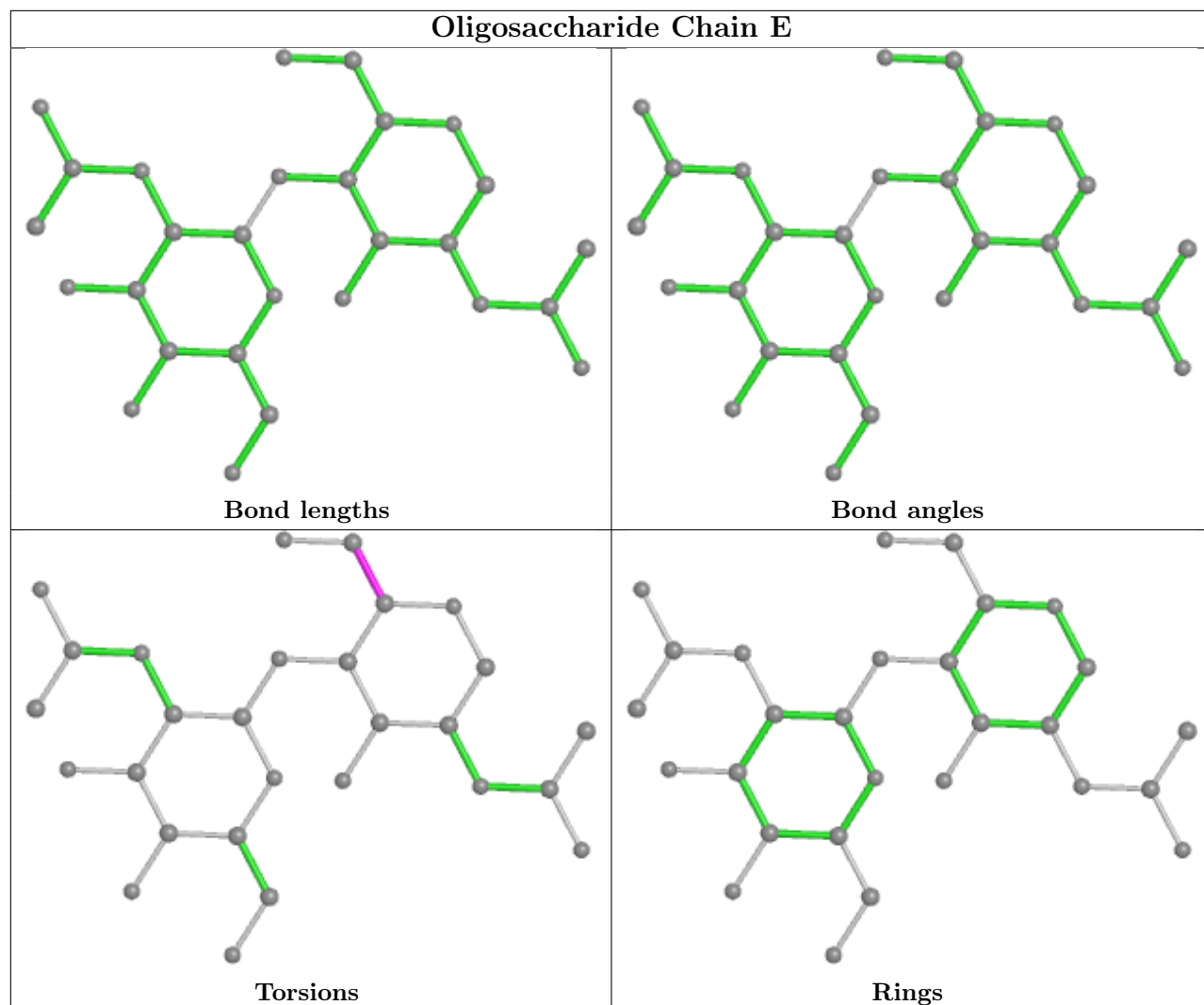
There are no ring outliers.

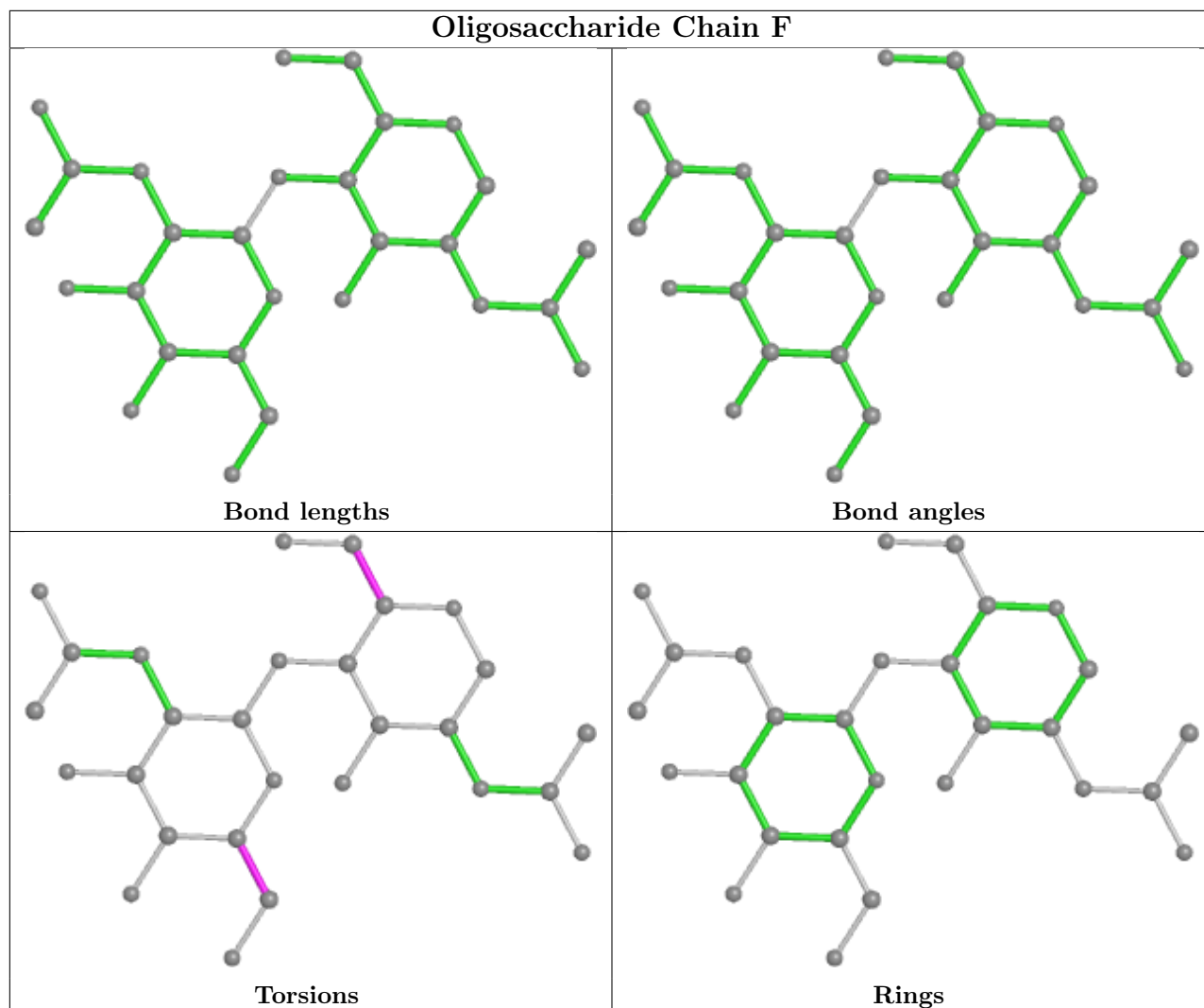
No monomer is involved in short contacts.

The following is a two-dimensional graphical depiction of Mogul quality analysis of bond lengths, bond angles, torsion angles, and ring geometry for oligosaccharide.









5.6 Ligand geometry [i](#)

78 ligands are modelled in this entry.

In the following table, the Counts columns list the number of bonds (or angles) for which Mogul statistics could be retrieved, the number of bonds (or angles) that are observed in the model and the number of bonds (or angles) that are defined in the Chemical Component Dictionary. The Link column lists molecule types, if any, to which the group is linked. The Z score for a bond length (or angle) is the number of standard deviations the observed value is removed from the expected value. A bond length (or angle) with $|Z| > 2$ is considered an outlier worth inspection. RMSZ is the root-mean-square of all Z scores of the bond lengths (or angles).

Mol	Type	Chain	Res	Link	Bond lengths			Bond angles		
					Counts	RMSZ	$\# Z > 2$	Counts	RMSZ	$\# Z > 2$
7	OCT	B	819	-	7,7,7	0.29	0	6,6,6	0.32	0
7	OCT	A	813	-	7,7,7	0.30	0	6,6,6	0.31	0
6	C14	A	831	-	13,13,13	0.29	0	12,12,12	0.31	0
7	OCT	A	836	-	7,7,7	0.30	0	6,6,6	0.28	0

Mol	Type	Chain	Res	Link	Bond lengths			Bond angles		
					Counts	RMSZ	# Z > 2	Counts	RMSZ	# Z > 2
6	C14	A	830	-	13,13,13	0.28	0	12,12,12	0.37	0
6	C14	B	825	-	13,13,13	0.28	0	12,12,12	0.37	0
8	CLR	A	828	-	31,31,31	0.27	0	48,48,48	0.41	0
6	C14	B	805	-	13,13,13	0.28	0	12,12,12	0.40	0
6	C14	B	807	-	13,13,13	0.29	0	12,12,12	0.35	0
7	OCT	B	824	-	7,7,7	0.29	0	6,6,6	0.34	0
7	OCT	A	839	-	7,7,7	0.30	0	6,6,6	0.32	0
7	OCT	A	820	-	7,7,7	0.30	0	6,6,6	0.31	0
7	OCT	B	835	-	7,7,7	0.30	0	6,6,6	0.28	0
12	R16	B	833	-	15,15,15	0.28	0	14,14,14	0.36	0
12	R16	A	834	-	15,15,15	0.28	0	14,14,14	0.35	0
6	C14	A	822	-	13,13,13	0.29	0	12,12,12	0.35	0
11	HP6	A	823	-	6,6,6	0.29	0	5,5,5	0.28	0
6	C14	A	815	-	13,13,13	0.28	0	12,12,12	0.38	0
7	OCT	B	810	-	7,7,7	0.29	0	6,6,6	0.32	0
4	ACO	B	802	-	41,50,53	0.55	0	52,75,79	0.67	2 (3%)
7	OCT	B	836	-	7,7,7	0.29	0	6,6,6	0.32	0
3	UV6	A	802	-	29,29,29	2.75	18 (62%)	39,42,42	1.34	5 (12%)
7	OCT	A	819	-	7,7,7	0.29	0	6,6,6	0.32	0
7	OCT	B	838	-	7,7,7	0.30	0	6,6,6	0.32	0
8	CLR	B	827	-	31,31,31	0.27	0	48,48,48	0.39	0
7	OCT	B	831	-	7,7,7	0.30	0	6,6,6	0.32	0
10	D12	A	827	-	9,9,11	0.29	0	8,8,10	0.35	0
9	D10	B	816	-	9,9,9	0.29	0	8,8,8	0.35	0
7	OCT	B	837	-	7,7,7	0.29	0	6,6,6	0.31	0
7	OCT	A	833	-	7,7,7	0.30	0	6,6,6	0.31	0
7	OCT	A	838	-	7,7,7	0.29	0	6,6,6	0.32	0
7	OCT	B	820	-	7,7,7	0.30	0	6,6,6	0.32	0
7	OCT	B	812	-	7,7,7	0.30	0	6,6,6	0.31	0
6	C14	B	813	-	13,13,13	0.29	0	12,12,12	0.37	0
7	OCT	A	816	-	7,7,7	0.30	0	6,6,6	0.32	0
7	OCT	B	823	-	7,7,7	0.29	0	6,6,6	0.33	0
3	UV6	B	801	-	29,29,29	2.73	18 (62%)	39,42,42	1.36	5 (12%)
7	OCT	B	815	-	7,7,7	0.30	0	6,6,6	0.32	0
6	C14	B	804	-	13,13,13	0.28	0	12,12,12	0.39	0
6	C14	A	807	-	13,13,13	0.28	0	12,12,12	0.36	0
7	OCT	B	834	-	7,7,7	0.29	0	6,6,6	0.30	0
7	OCT	B	818	-	7,7,7	0.29	0	6,6,6	0.33	0
10	D12	A	818	-	11,11,11	0.28	0	10,10,10	0.36	0
6	C14	B	809	-	13,13,13	0.28	0	12,12,12	0.38	0
7	OCT	B	808	-	7,7,7	0.29	0	6,6,6	0.32	0
5	NAG	B	803	1	14,14,15	0.24	0	17,19,21	0.46	0

Mol	Type	Chain	Res	Link	Bond lengths			Bond angles		
					Counts	RMSZ	# Z > 2	Counts	RMSZ	# Z > 2
6	C14	B	814	-	13,13,13	0.28	0	12,12,12	0.38	0
7	OCT	A	809	-	7,7,7	0.29	0	6,6,6	0.32	0
7	OCT	A	835	-	7,7,7	0.29	0	6,6,6	0.30	0
7	OCT	A	824	-	7,7,7	0.30	0	6,6,6	0.33	0
7	OCT	A	825	-	7,7,7	0.29	0	6,6,6	0.34	0
7	OCT	A	832	-	7,7,7	0.30	0	6,6,6	0.32	0
10	D12	B	817	-	11,11,11	0.28	0	10,10,10	0.36	0
6	C14	A	829	-	13,13,13	0.28	0	12,12,12	0.38	0
6	C14	A	810	-	13,13,13	0.27	0	12,12,12	0.39	0
7	OCT	A	811	-	7,7,7	0.29	0	6,6,6	0.32	0
9	D10	A	817	-	9,9,9	0.29	0	8,8,8	0.35	0
8	CLR	B	811	-	31,31,31	0.27	0	48,48,48	0.39	0
5	NAG	A	804	1	14,14,15	0.22	0	17,19,21	0.46	0
10	D12	A	801	-	11,11,11	0.28	0	10,10,10	0.36	0
7	OCT	A	837	-	7,7,7	0.29	0	6,6,6	0.32	0
10	D12	B	826	-	9,9,11	0.29	0	8,8,10	0.35	0
6	C14	A	806	-	13,13,13	0.28	0	12,12,12	0.39	0
6	C14	B	828	-	13,13,13	0.28	0	12,12,12	0.37	0
6	C14	B	830	-	13,13,13	0.29	0	12,12,12	0.31	0
6	C14	A	805	-	13,13,13	0.29	0	12,12,12	0.37	0
6	C14	B	806	-	13,13,13	0.29	0	12,12,12	0.36	0
10	D12	B	839	-	11,11,11	0.28	0	10,10,10	0.37	0
6	C14	B	821	-	13,13,13	0.27	0	12,12,12	0.40	0
4	ACO	A	803	-	41,50,53	0.54	0	52,75,79	0.64	2 (3%)
6	C14	A	814	-	13,13,13	0.28	0	12,12,12	0.37	0
7	OCT	B	832	-	7,7,7	0.30	0	6,6,6	0.30	0
6	C14	A	808	-	13,13,13	0.29	0	12,12,12	0.36	0
6	C14	B	829	-	13,13,13	0.28	0	12,12,12	0.36	0
8	CLR	A	812	-	31,31,31	0.27	0	48,48,48	0.39	0
7	OCT	A	821	-	7,7,7	0.30	0	6,6,6	0.32	0
11	HP6	B	822	-	6,6,6	0.30	0	5,5,5	0.28	0
6	C14	A	826	-	13,13,13	0.29	0	12,12,12	0.37	0

In the following table, the Chirals column lists the number of chiral outliers, the number of chiral centers analysed, the number of these observed in the model and the number defined in the Chemical Component Dictionary. Similar counts are reported in the Torsion and Rings columns. '-' means no outliers of that kind were identified.

Mol	Type	Chain	Res	Link	Chirals	Torsions	Rings
7	OCT	B	819	-	-	1/5/5/5	-
7	OCT	A	813	-	-	1/5/5/5	-
6	C14	A	831	-	-	7/11/11/11	-

Continued on next page...

Continued from previous page...

Mol	Type	Chain	Res	Link	Chirals	Torsions	Rings
7	OCT	A	836	-	-	1/5/5/5	-
6	C14	A	830	-	-	3/11/11/11	-
6	C14	B	825	-	-	6/11/11/11	-
8	CLR	A	828	-	-	4/10/68/68	0/4/4/4
6	C14	B	805	-	-	1/11/11/11	-
6	C14	B	807	-	-	3/11/11/11	-
7	OCT	B	824	-	-	0/5/5/5	-
7	OCT	A	839	-	-	0/5/5/5	-
7	OCT	A	820	-	-	2/5/5/5	-
7	OCT	B	835	-	-	1/5/5/5	-
12	R16	B	833	-	-	5/13/13/13	-
12	R16	A	834	-	-	5/13/13/13	-
6	C14	A	822	-	-	3/11/11/11	-
11	HP6	A	823	-	-	3/4/4/4	-
6	C14	A	815	-	-	4/11/11/11	-
7	OCT	B	810	-	-	0/5/5/5	-
4	ACO	B	802	-	-	8/44/64/67	0/3/3/3
7	OCT	B	836	-	-	0/5/5/5	-
3	UV6	A	802	-	-	3/10/42/42	0/3/3/3
7	OCT	A	819	-	-	0/5/5/5	-
7	OCT	B	838	-	-	0/5/5/5	-
8	CLR	B	827	-	-	4/10/68/68	0/4/4/4
7	OCT	B	831	-	-	0/5/5/5	-
10	D12	A	827	-	-	1/7/7/9	-
9	D10	B	816	-	-	2/7/7/7	-
7	OCT	B	837	-	-	1/5/5/5	-
7	OCT	A	833	-	-	0/5/5/5	-
7	OCT	A	838	-	-	1/5/5/5	-
7	OCT	B	820	-	-	2/5/5/5	-
7	OCT	B	812	-	-	0/5/5/5	-
6	C14	B	813	-	-	4/11/11/11	-
7	OCT	A	816	-	-	2/5/5/5	-
7	OCT	B	823	-	-	0/5/5/5	-
3	UV6	B	801	-	-	3/10/42/42	0/3/3/3
7	OCT	B	815	-	-	2/5/5/5	-
6	C14	B	804	-	-	3/11/11/11	-
6	C14	A	807	-	-	3/11/11/11	-

Continued on next page...

Continued from previous page...

Mol	Type	Chain	Res	Link	Chirals	Torsions	Rings
7	OCT	B	834	-	-	0/5/5/5	-
7	OCT	B	818	-	-	0/5/5/5	-
10	D12	A	818	-	-	4/9/9/9	-
6	C14	B	809	-	-	5/11/11/11	-
7	OCT	B	808	-	-	0/5/5/5	-
5	NAG	B	803	1	-	2/6/23/26	0/1/1/1
6	C14	B	814	-	-	4/11/11/11	-
7	OCT	A	809	-	-	0/5/5/5	-
7	OCT	A	835	-	-	1/5/5/5	-
7	OCT	A	824	-	-	0/5/5/5	-
7	OCT	A	825	-	-	0/5/5/5	-
7	OCT	A	832	-	-	0/5/5/5	-
10	D12	B	817	-	-	4/9/9/9	-
6	C14	A	829	-	-	4/11/11/11	-
6	C14	A	810	-	-	5/11/11/11	-
7	OCT	A	811	-	-	0/5/5/5	-
9	D10	A	817	-	-	2/7/7/7	-
8	CLR	B	811	-	-	0/10/68/68	0/4/4/4
5	NAG	A	804	1	-	2/6/23/26	0/1/1/1
10	D12	A	801	-	-	6/9/9/9	-
7	OCT	A	837	-	-	1/5/5/5	-
10	D12	B	826	-	-	1/7/7/9	-
6	C14	A	806	-	-	0/11/11/11	-
6	C14	B	828	-	-	4/11/11/11	-
6	C14	B	830	-	-	7/11/11/11	-
6	C14	A	805	-	-	3/11/11/11	-
6	C14	B	806	-	-	5/11/11/11	-
10	D12	B	839	-	-	6/9/9/9	-
6	C14	B	821	-	-	3/11/11/11	-
4	ACO	A	803	-	-	8/44/64/67	0/3/3/3
6	C14	A	814	-	-	5/11/11/11	-
7	OCT	B	832	-	-	1/5/5/5	-
6	C14	A	808	-	-	3/11/11/11	-
6	C14	B	829	-	-	4/11/11/11	-
8	CLR	A	812	-	-	0/10/68/68	0/4/4/4
7	OCT	A	821	-	-	2/5/5/5	-
11	HP6	B	822	-	-	3/4/4/4	-

Continued on next page...

Continued from previous page...

Mol	Type	Chain	Res	Link	Chirals	Torsions	Rings
6	C14	A	826	-	-	6/11/11/11	-

The worst 5 of 36 bond length outliers are listed below:

Mol	Chain	Res	Type	Atoms	Z	Observed(Å)	Ideal(Å)
3	A	802	UV6	O7-C13	5.49	1.45	1.38
3	B	801	UV6	O7-C13	5.34	1.45	1.38
3	B	801	UV6	O5-C4'	4.99	1.56	1.44
3	A	802	UV6	O5-C4'	4.97	1.56	1.44
3	A	802	UV6	C1'-N9	4.27	1.52	1.45

The worst 5 of 14 bond angle outliers are listed below:

Mol	Chain	Res	Type	Atoms	Z	Observed(°)	Ideal(°)
3	B	801	UV6	C9-OP3-CAA	-4.24	111.57	117.79
3	A	802	UV6	C9-OP3-CAA	-4.01	111.92	117.79
3	A	802	UV6	C2'-C1'-N9	-2.61	105.68	110.62
3	B	801	UV6	C2'-C1'-N9	-2.43	106.04	110.62
4	A	803	ACO	P2A-O6A-CCP	-2.41	107.68	121.56

There are no chirality outliers.

5 of 190 torsion outliers are listed below:

Mol	Chain	Res	Type	Atoms
4	B	802	ACO	C5B-O5B-P1A-O3A
4	B	802	ACO	P1A-O3A-P2A-O6A
4	B	802	ACO	CCP-O6A-P2A-O4A
4	B	802	ACO	CCP-O6A-P2A-O5A
4	A	803	ACO	C5B-O5B-P1A-O3A

There are no ring outliers.

27 monomers are involved in 44 short contacts:

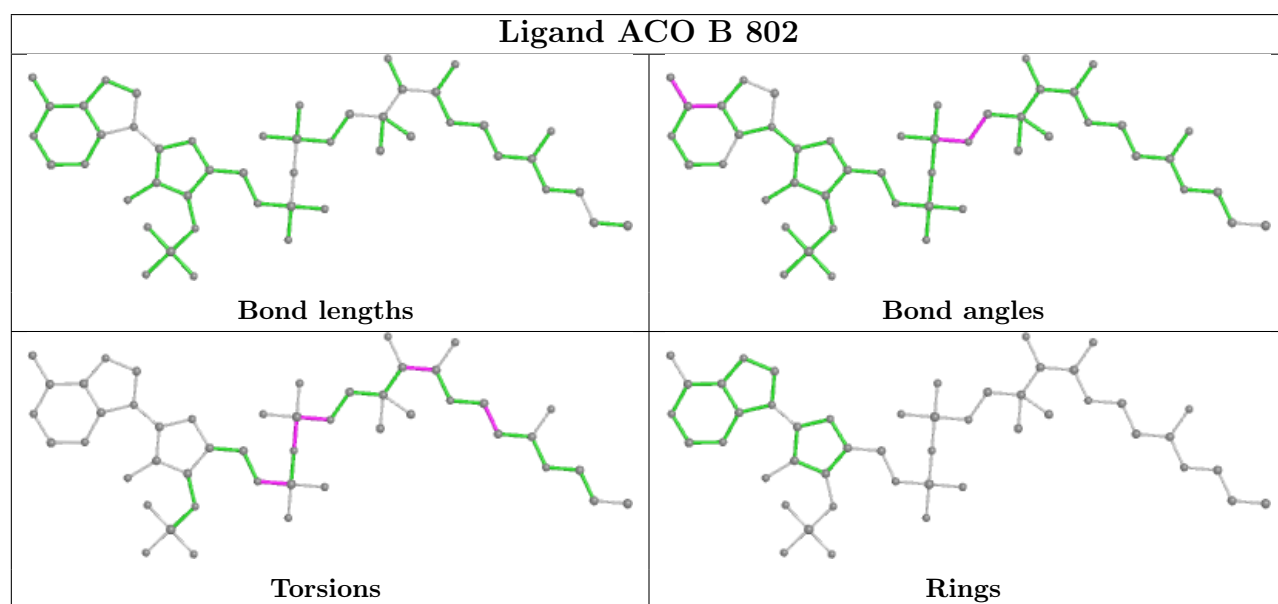
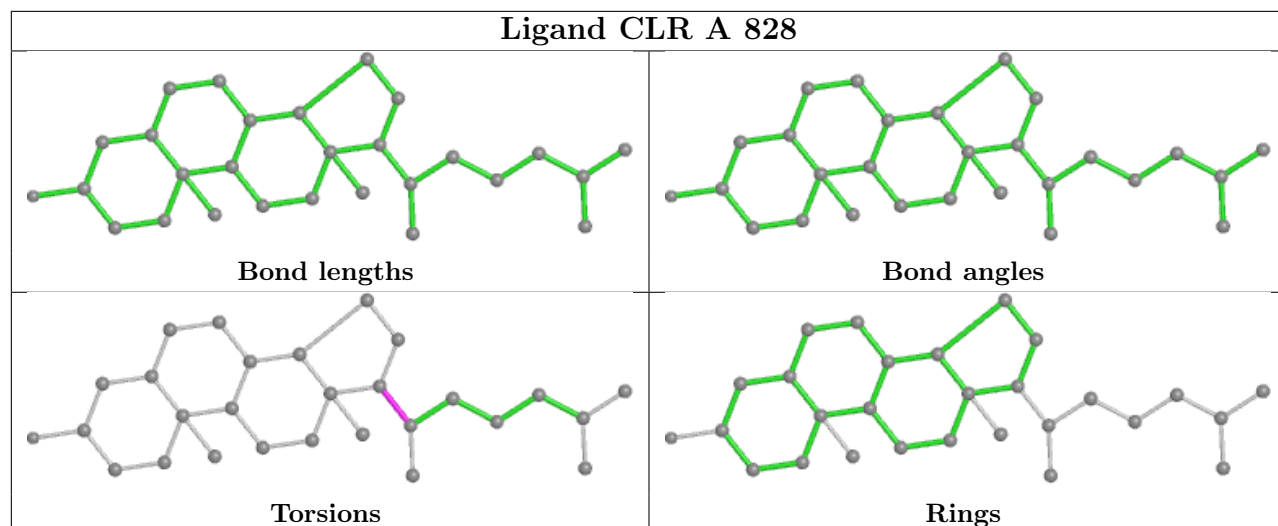
Mol	Chain	Res	Type	Clashes	Symm-Clashes
6	A	831	C14	1	0
6	B	825	C14	1	0
8	A	828	CLR	3	0
6	B	805	C14	1	0
7	B	835	OCT	1	0
6	A	822	C14	2	0
11	A	823	HP6	1	0

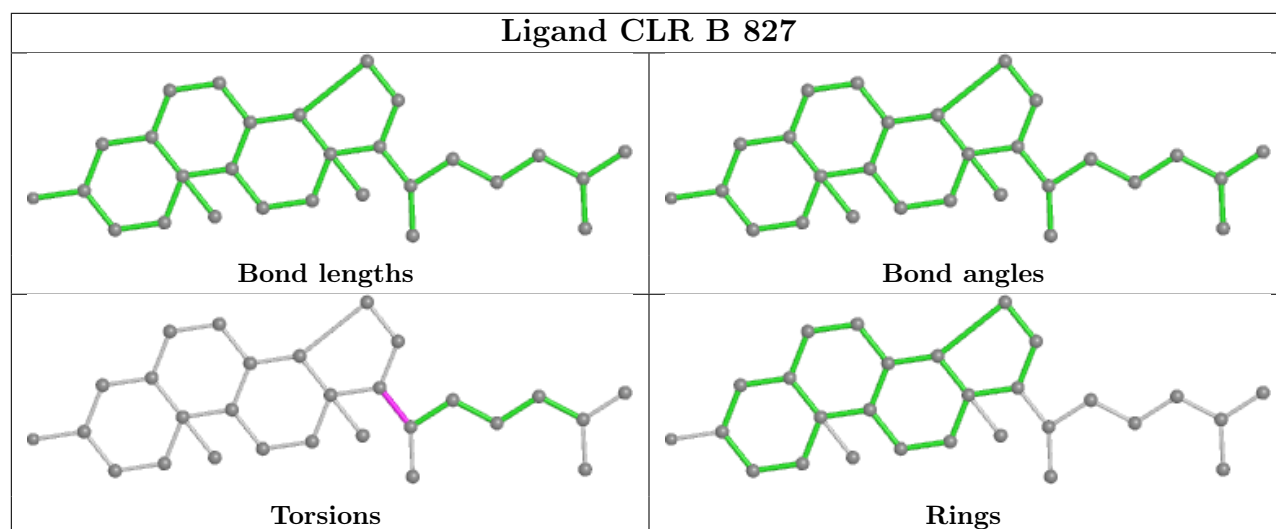
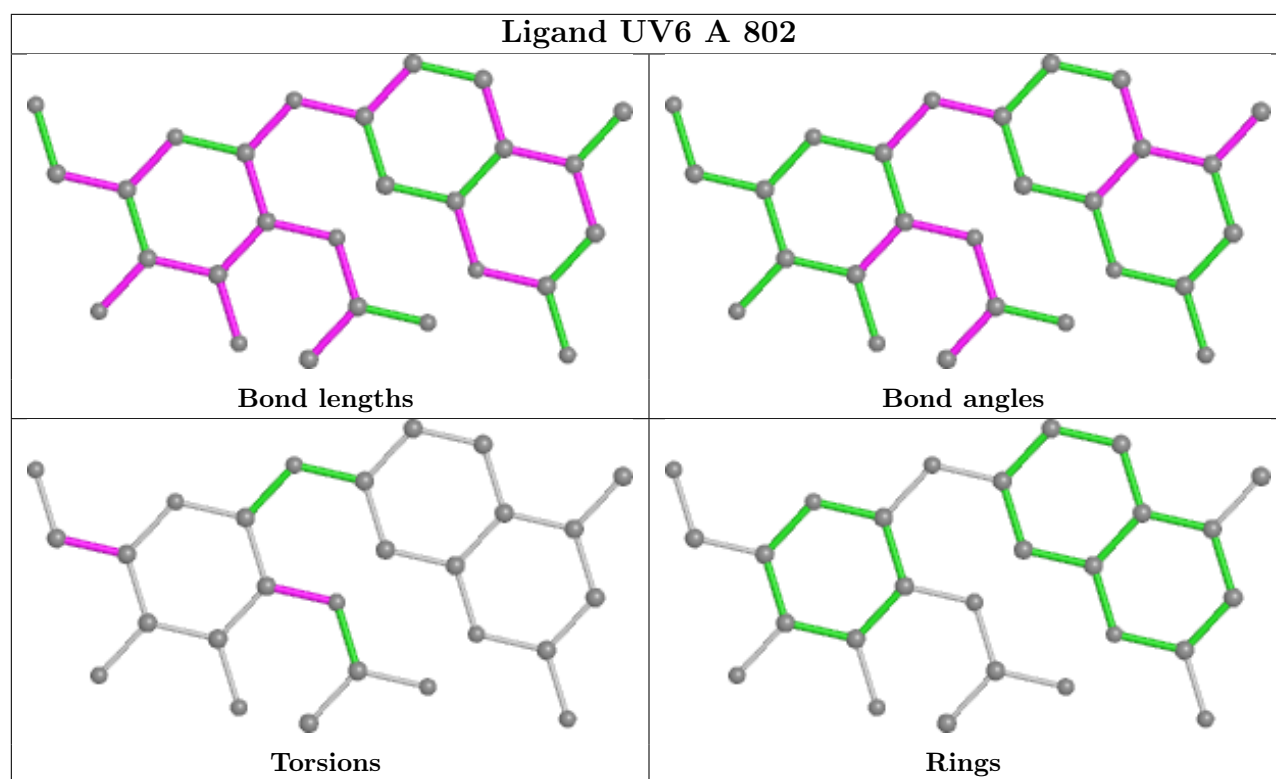
Continued on next page...

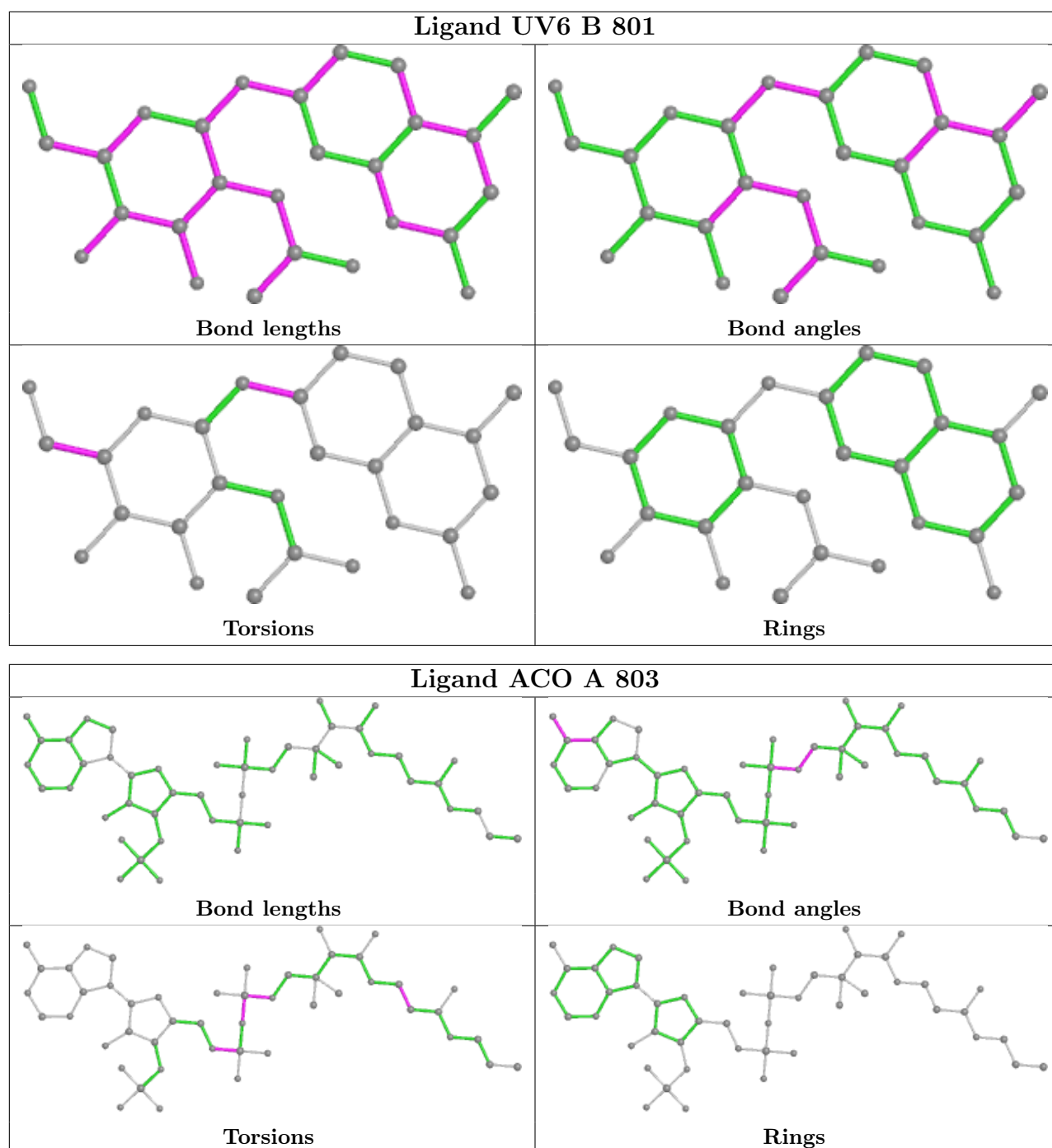
Continued from previous page...

Mol	Chain	Res	Type	Clashes	Symm-Clashes
6	A	815	C14	1	0
4	B	802	ACO	2	0
8	B	827	CLR	3	0
6	B	813	C14	2	0
3	B	801	UV6	1	0
6	B	804	C14	1	0
6	A	807	C14	1	0
6	B	809	C14	1	0
6	B	814	C14	1	0
8	B	811	CLR	5	0
10	B	826	D12	1	0
6	B	828	C14	1	0
6	B	830	C14	1	0
6	A	805	C14	1	0
6	B	821	C14	1	0
4	A	803	ACO	3	0
6	A	814	C14	1	0
8	A	812	CLR	7	0
11	B	822	HP6	1	0
6	A	826	C14	1	0

The following is a two-dimensional graphical depiction of Mogul quality analysis of bond lengths, bond angles, torsion angles, and ring geometry for all instances of the Ligand of Interest. In addition, ligands with molecular weight > 250 and outliers as shown on the validation Tables will also be included. For torsion angles, if less than 5% of the Mogul distribution of torsion angles is within 10 degrees of the torsion angle in question, then that torsion angle is considered an outlier. Any bond that is central to one or more torsion angles identified as an outlier by Mogul will be highlighted in the graph. For rings, the root-mean-square deviation (RMSD) between the ring in question and similar rings identified by Mogul is calculated over all ring torsion angles. If the average RMSD is greater than 60 degrees and the minimal RMSD between the ring in question and any Mogul-identified rings is also greater than 60 degrees, then that ring is considered an outlier. The outliers are highlighted in purple. The color gray indicates Mogul did not find sufficient equivalents in the CSD to analyse the geometry.







5.7 Other polymers [i](#)

There are no such residues in this entry.

5.8 Polymer linkage issues [i](#)

There are no chain breaks in this entry.

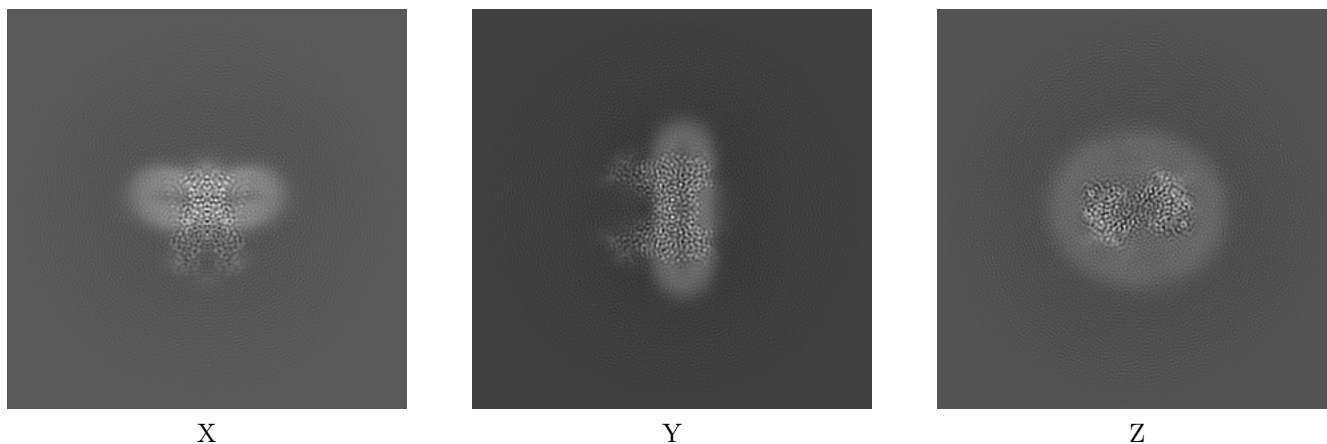
6 Map visualisation [i](#)

This section contains visualisations of the EMDB entry EMD-37264. These allow visual inspection of the internal detail of the map and identification of artifacts.

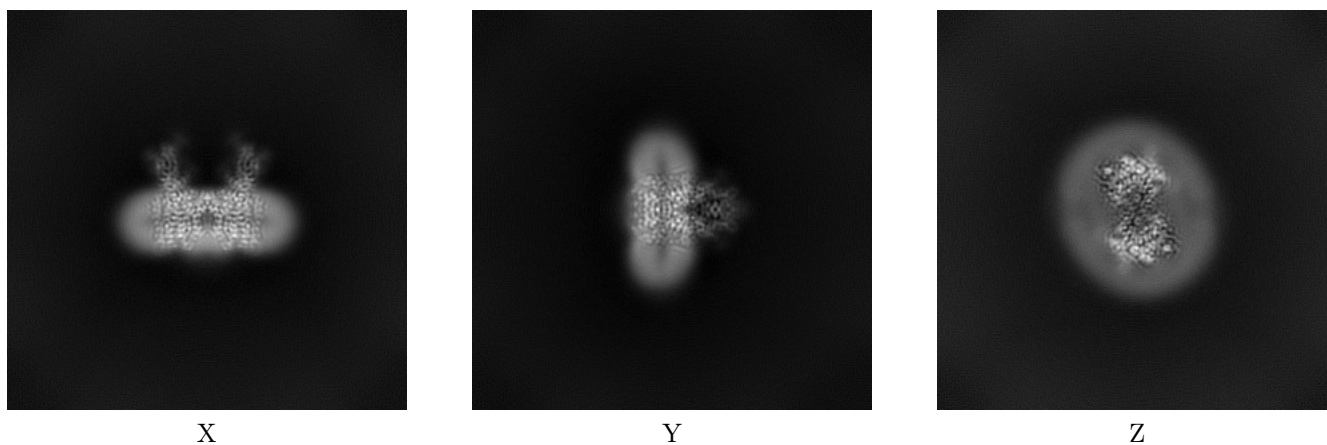
Images derived from a raw map, generated by summing the deposited half-maps, are presented below the corresponding image components of the primary map to allow further visual inspection and comparison with those of the primary map.

6.1 Orthogonal projections [i](#)

6.1.1 Primary map



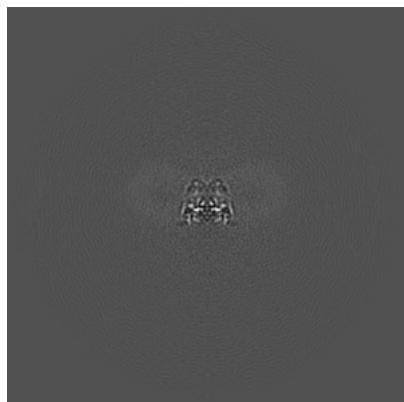
6.1.2 Raw map



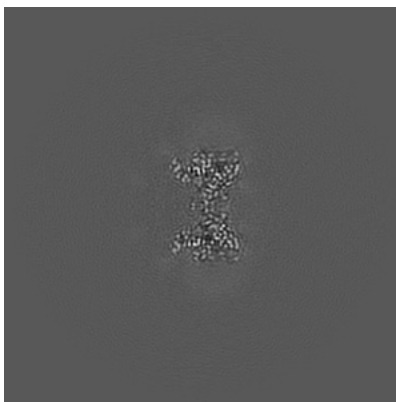
The images above show the map projected in three orthogonal directions.

6.2 Central slices [i](#)

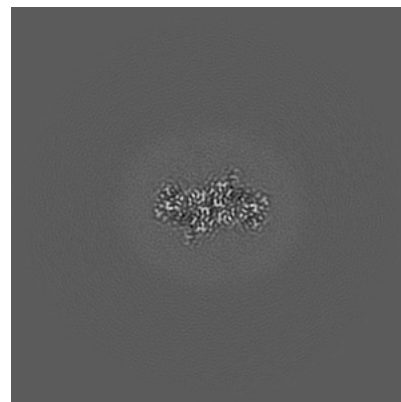
6.2.1 Primary map



X Index: 200

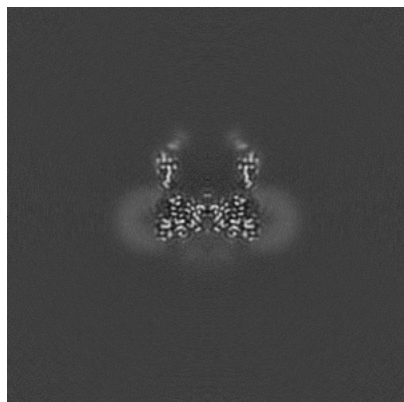


Y Index: 200

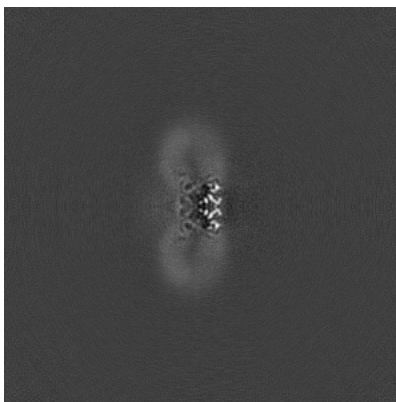


Z Index: 200

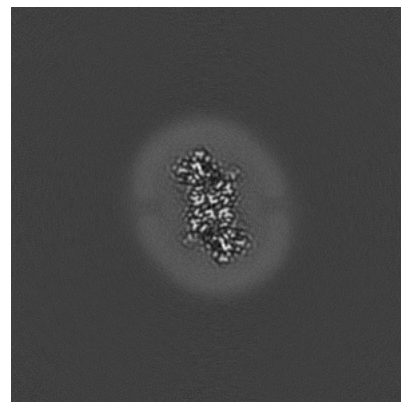
6.2.2 Raw map



X Index: 200



Y Index: 200

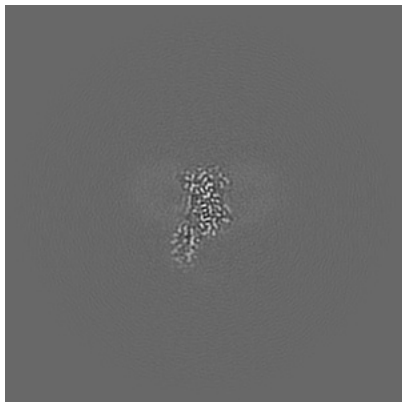


Z Index: 200

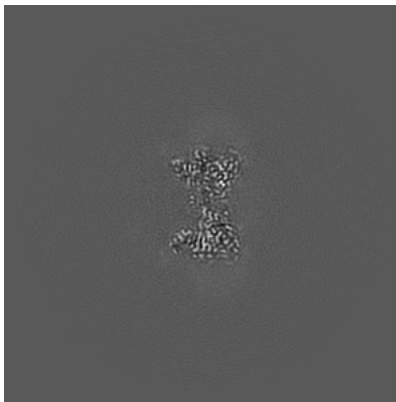
The images above show central slices of the map in three orthogonal directions.

6.3 Largest variance slices [i](#)

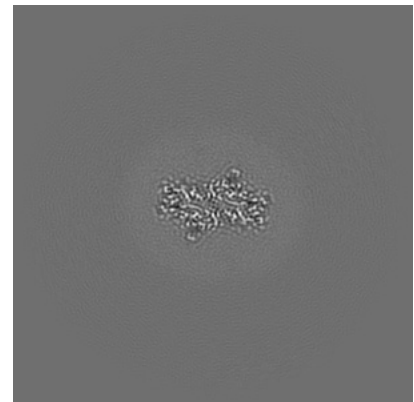
6.3.1 Primary map



X Index: 164

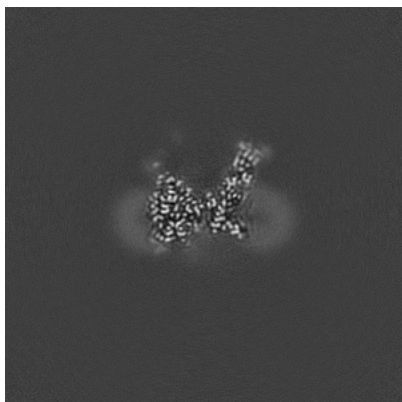


Y Index: 198

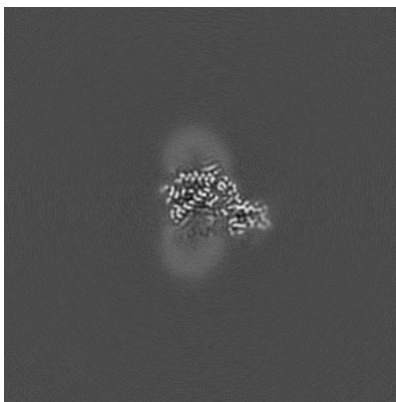


Z Index: 196

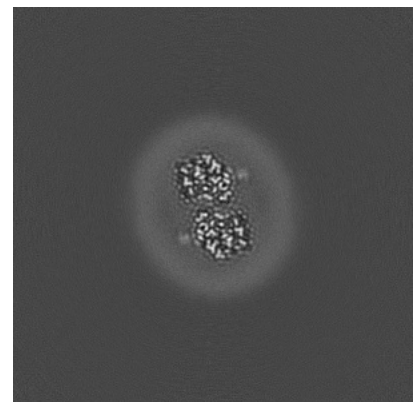
6.3.2 Raw map



X Index: 213



Y Index: 162

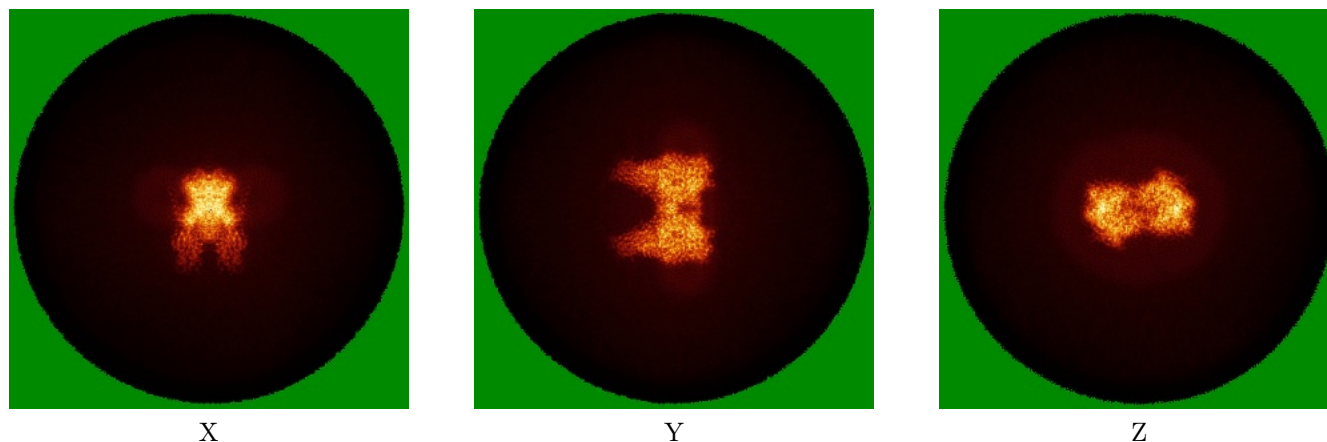


Z Index: 180

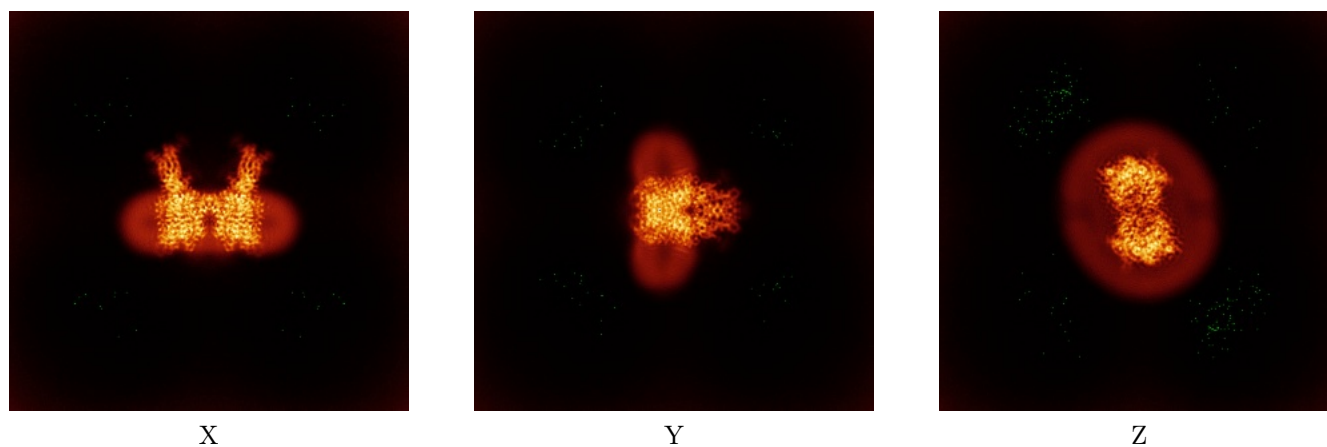
The images above show the largest variance slices of the map in three orthogonal directions.

6.4 Orthogonal standard-deviation projections (False-color) [i](#)

6.4.1 Primary map



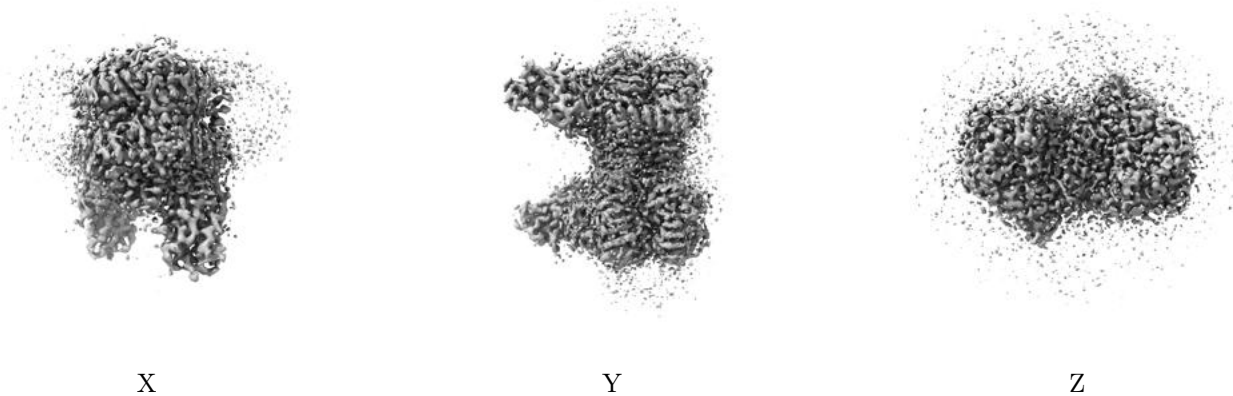
6.4.2 Raw map



The images above show the map standard deviation projections with false color in three orthogonal directions. Minimum values are shown in green, max in blue, and dark to light orange shades represent small to large values respectively.

6.5 Orthogonal surface views [i](#)

6.5.1 Primary map



The images above show the 3D surface view of the map at the recommended contour level 0.17. These images, in conjunction with the slice images, may facilitate assessment of whether an appropriate contour level has been provided.

6.5.2 Raw map



These images show the 3D surface of the raw map. The raw map's contour level was selected so that its surface encloses the same volume as the primary map does at its recommended contour level.

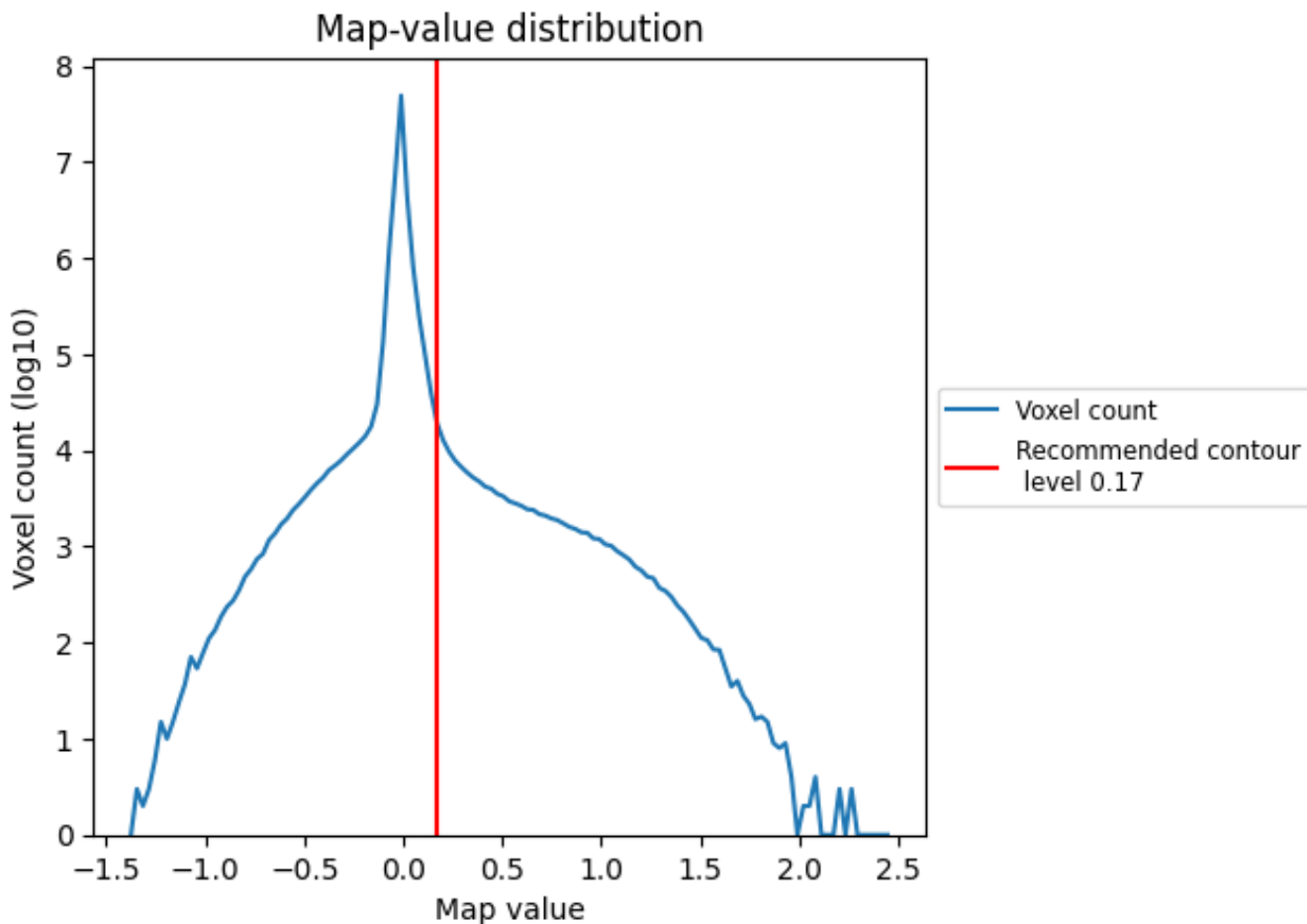
6.6 Mask visualisation [i](#)

This section was not generated. No masks/segmentation were deposited.

7 Map analysis [i](#)

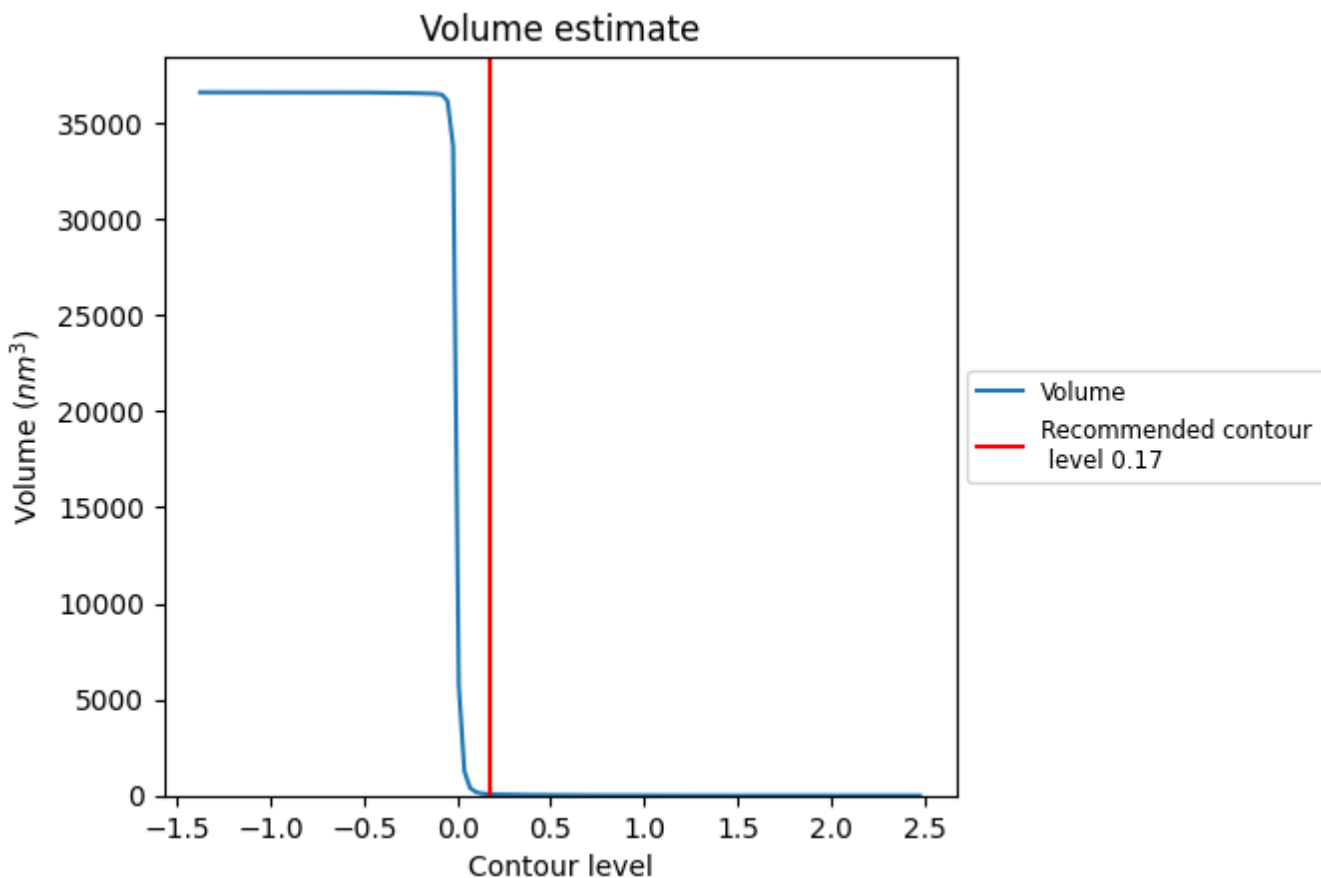
This section contains the results of statistical analysis of the map.

7.1 Map-value distribution [i](#)



The map-value distribution is plotted in 128 intervals along the x-axis. The y-axis is logarithmic. A spike in this graph at zero usually indicates that the volume has been masked.

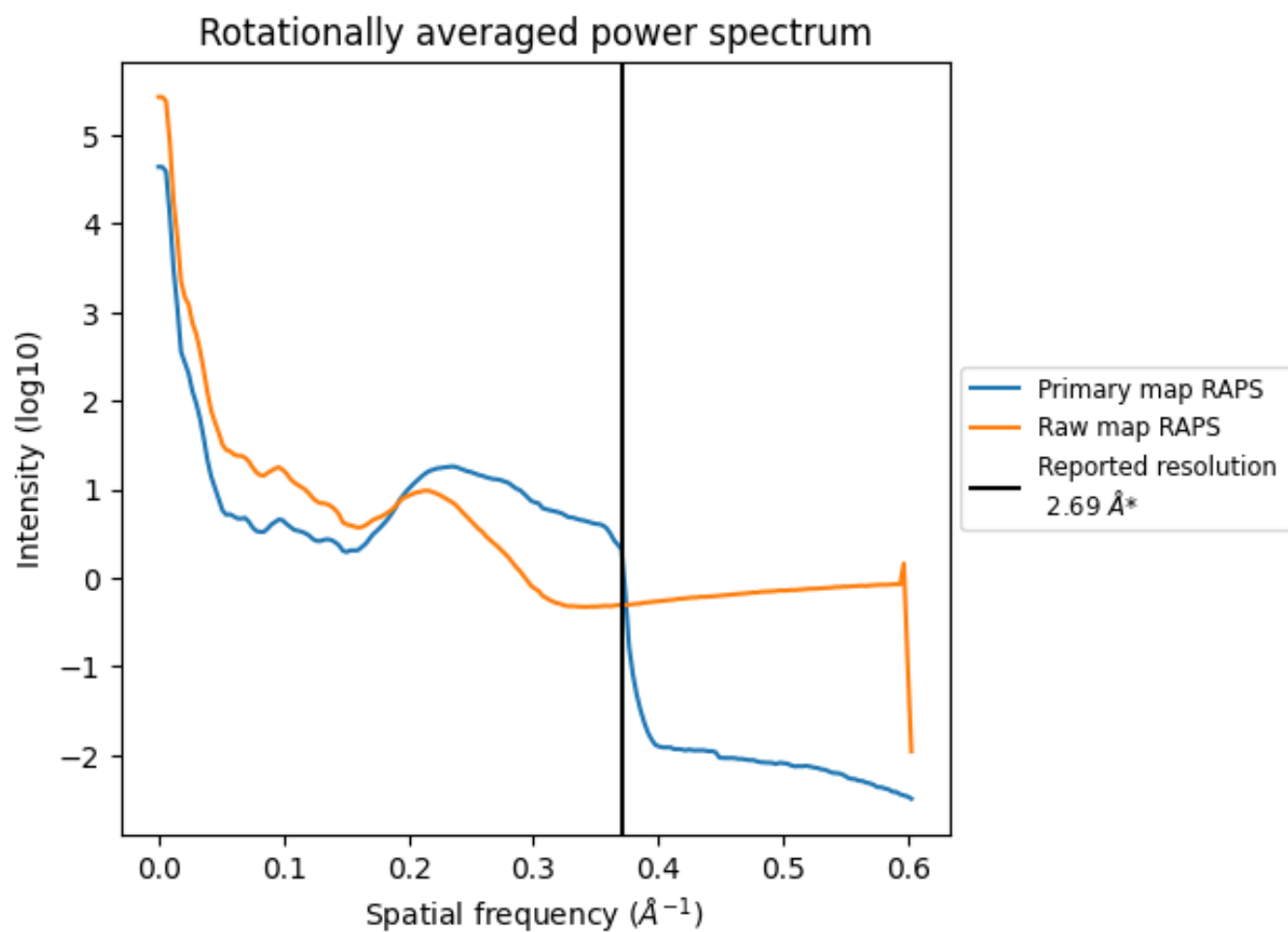
7.2 Volume estimate [\(i\)](#)



The volume at the recommended contour level is 75 nm^3 ; this corresponds to an approximate mass of 67 kDa.

The volume estimate graph shows how the enclosed volume varies with the contour level. The recommended contour level is shown as a vertical line and the intersection between the line and the curve gives the volume of the enclosed surface at the given level.

7.3 Rotationally averaged power spectrum i

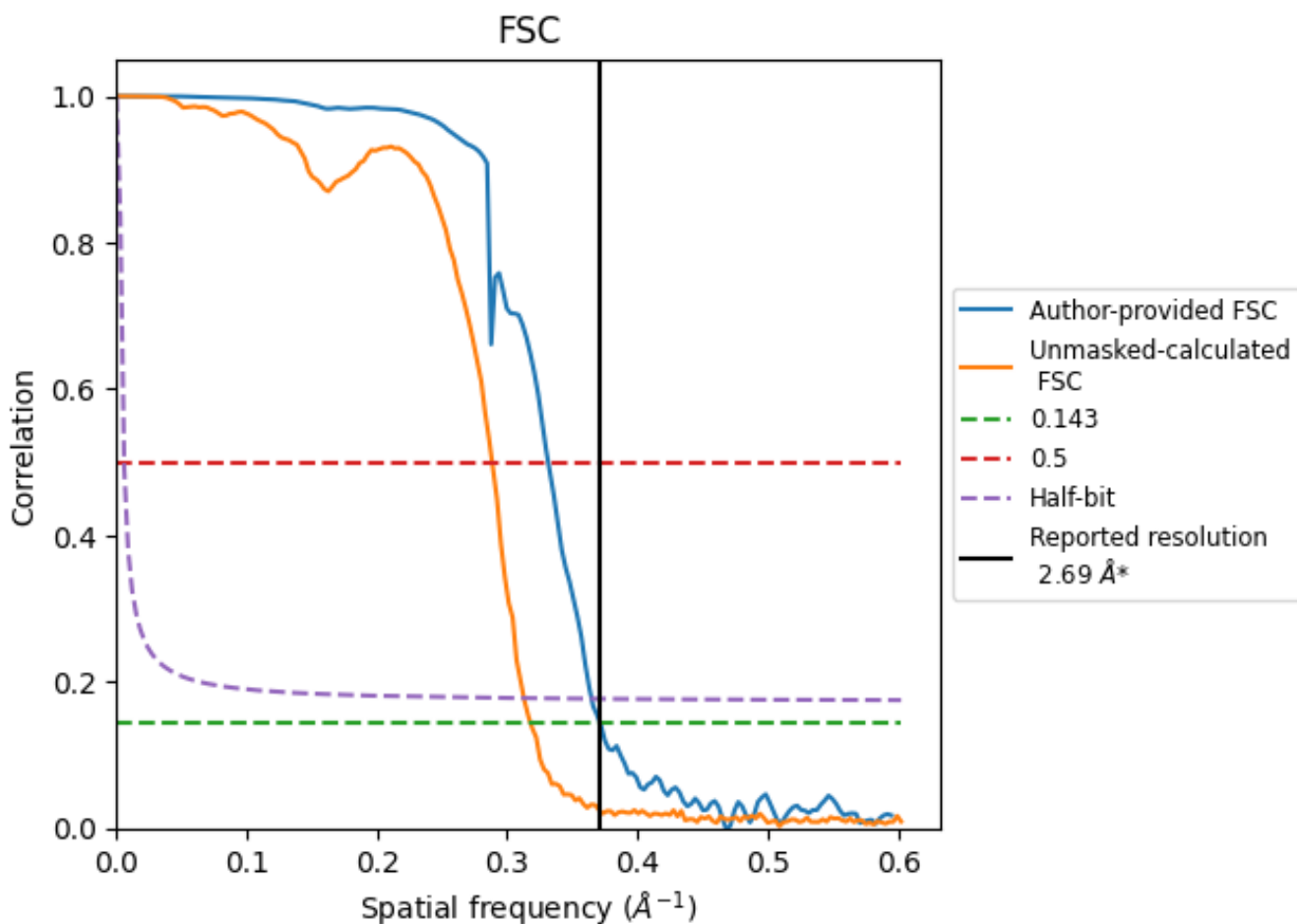


*Reported resolution corresponds to spatial frequency of 0.372 Å⁻¹

8 Fourier-Shell correlation [i](#)

Fourier-Shell Correlation (FSC) is the most commonly used method to estimate the resolution of single-particle and subtomogram-averaged maps. The shape of the curve depends on the imposed symmetry, mask and whether or not the two 3D reconstructions used were processed from a common reference. The reported resolution is shown as a black line. A curve is displayed for the half-bit criterion in addition to lines showing the 0.143 gold standard cut-off and 0.5 cut-off.

8.1 FSC [i](#)



*Reported resolution corresponds to spatial frequency of 0.372 Å⁻¹

8.2 Resolution estimates [i](#)

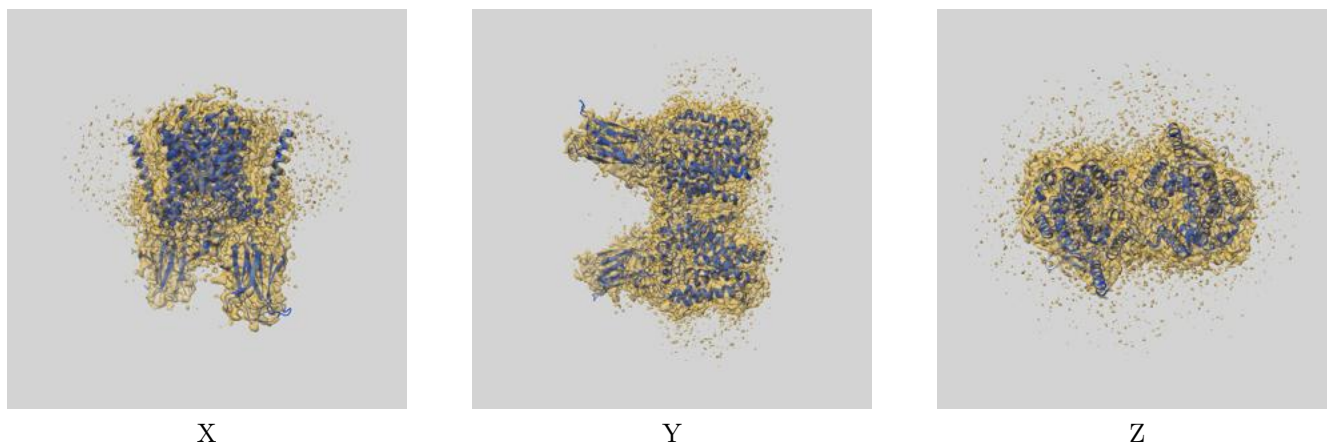
Resolution estimate (Å)	Estimation criterion (FSC cut-off)		
	0.143	0.5	Half-bit
Reported by author	2.69	-	-
Author-provided FSC curve	2.69	3.02	2.74
Unmasked-calculated*	3.14	3.47	3.20

*Resolution estimate based on FSC curve calculated by comparison of deposited half-maps. The value from deposited half-maps intersecting FSC 0.143 CUT-OFF 3.14 differs from the reported value 2.69 by more than 10 %

9 Map-model fit [i](#)

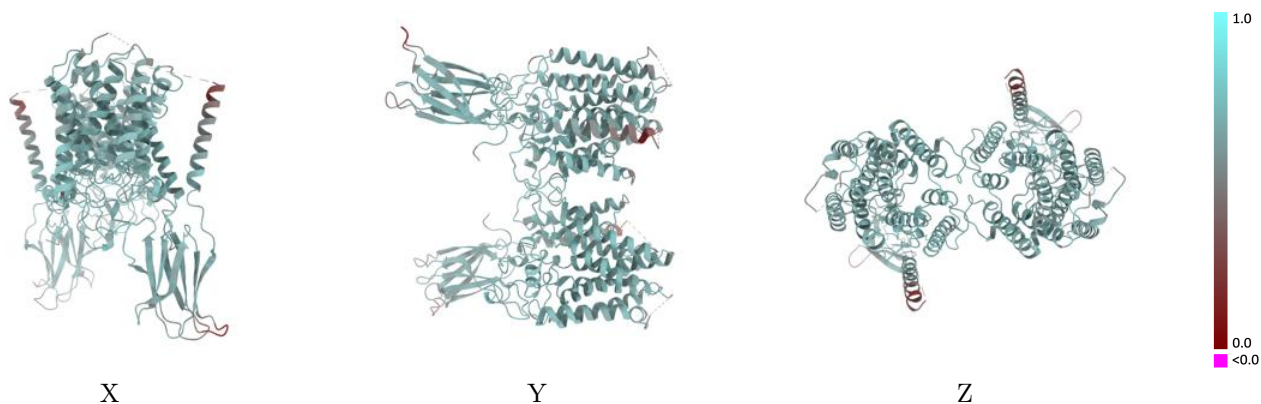
This section contains information regarding the fit between EMDB map EMD-37264 and PDB model 8W4A. Per-residue inclusion information can be found in section [3](#) on page [15](#).

9.1 Map-model overlay [i](#)



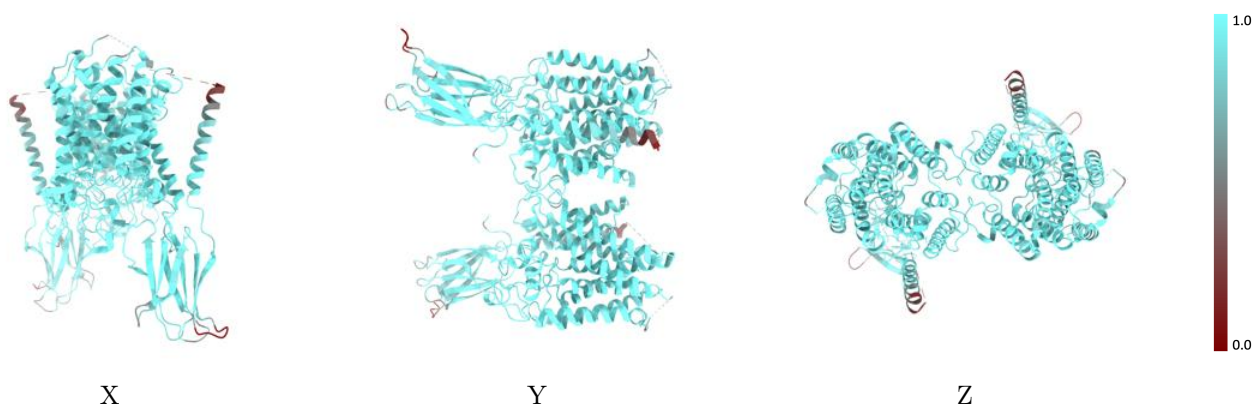
The images above show the 3D surface view of the map at the recommended contour level 0.17 at 50% transparency in yellow overlaid with a ribbon representation of the model coloured in blue. These images allow for the visual assessment of the quality of fit between the atomic model and the map.

9.2 Q-score mapped to coordinate model [\(i\)](#)



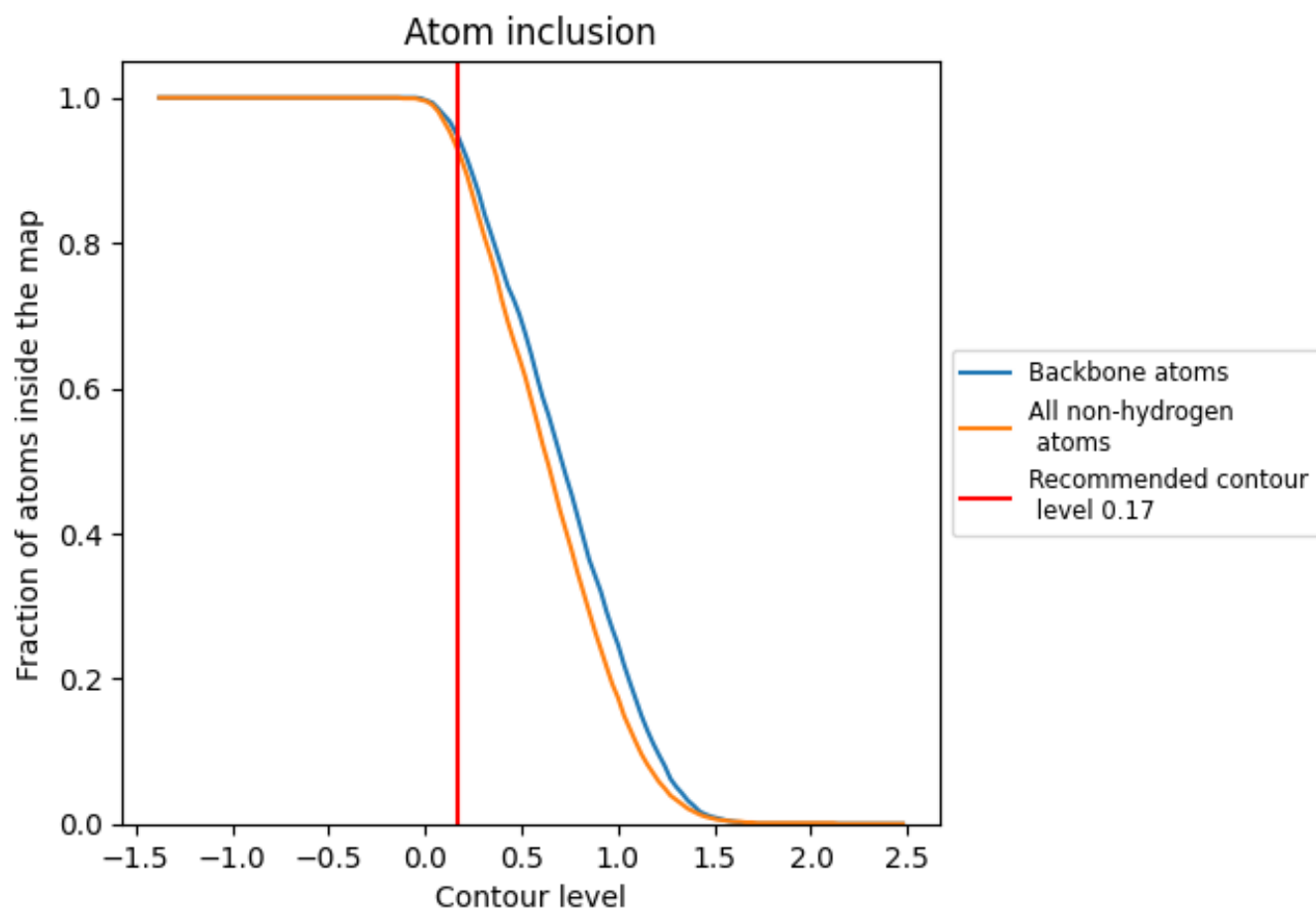
The images above show the model with each residue coloured according to its Q-score. This shows their resolvability in the map with higher Q-score values reflecting better resolvability. Please note: Q-score is calculating the resolvability of atoms, and thus high values are only expected at resolutions at which atoms can be resolved. Low Q-score values may therefore be expected for many entries.

9.3 Atom inclusion mapped to coordinate model [\(i\)](#)



The images above show the model with each residue coloured according to its atom inclusion. This shows to what extent they are inside the map at the recommended contour level (0.17).















9.4 Atom inclusion [i](#)



At the recommended contour level, 95% of all backbone atoms, 93% of all non-hydrogen atoms, are inside the map.

9.5 Map-model fit summary

The table lists the average atom inclusion at the recommended contour level (0.17) and Q-score for the entire model and for each chain.

Chain	Atom inclusion	Q-score
All	 0.9280	 0.6190
A	 0.9290	 0.6180
B	 0.9320	 0.6220
C	 0.8210	 0.5830
D	 0.6430	 0.4760
E	 0.7860	 0.5830
F	 0.6070	 0.4810

