



wwPDB X-ray Structure Validation Summary Report ⓘ

Sep 25, 2023 – 02:30 AM EDT

PDB ID : 5W6G
Title : Human antibody 6649 in complex with influenza hemagglutinin H1 Solomon Islands
Authors : Raymond, D.D.; Harrison, S.C.
Deposited on : 2017-06-16
Resolution : 2.79 Å (reported)

This is a wwPDB X-ray Structure Validation Summary Report for a publicly released PDB entry.

We welcome your comments at validation@mail.wwpdb.org

A user guide is available at

<https://www.wwpdb.org/validation/2017/XrayValidationReportHelp>

with specific help available everywhere you see the ⓘ symbol.

The types of validation reports are described at

<http://www.wwpdb.org/validation/2017/FAQs#types>.

The following versions of software and data (see [references ⓘ](#)) were used in the production of this report:

MolProbity : 4.02b-467
Mogul : 1.8.5 (274361), CSD as541be (2020)
Xtriage (Phenix) : 1.13
EDS : 2.35.1
Percentile statistics : 20191225.v01 (using entries in the PDB archive December 25th 2019)
Refmac : 5.8.0158
CCP4 : 7.0.044 (Gargrove)
Ideal geometry (proteins) : Engh & Huber (2001)
Ideal geometry (DNA, RNA) : Parkinson et al. (1996)
Validation Pipeline (wwPDB-VP) : 2.35.1

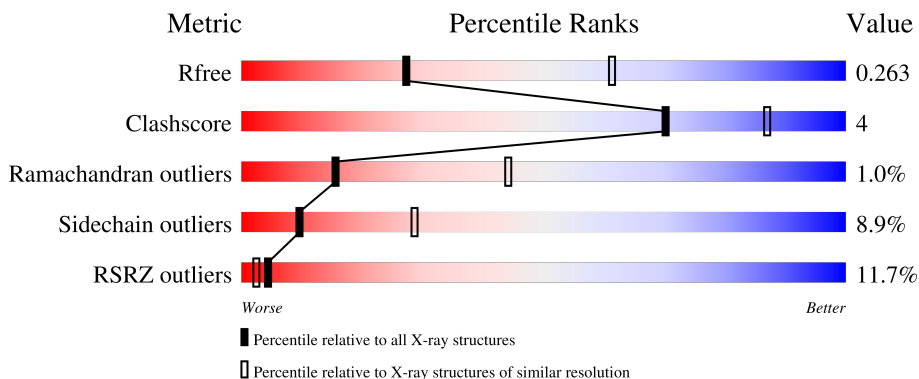
1 Overall quality at a glance

The following experimental techniques were used to determine the structure:

X-RAY DIFFRACTION

The reported resolution of this entry is 2.79 Å.

Percentile scores (ranging between 0-100) for global validation metrics of the entry are shown in the following graphic. The table shows the number of entries on which the scores are based.



Metric	Whole archive (#Entries)	Similar resolution (#Entries, resolution range(Å))
R_{free}	130704	3140 (2.80-2.80)
Clashscore	141614	3569 (2.80-2.80)
Ramachandran outliers	138981	3498 (2.80-2.80)
Sidechain outliers	138945	3500 (2.80-2.80)
RSRZ outliers	127900	3078 (2.80-2.80)

The table below summarises the geometric issues observed across the polymeric chains and their fit to the electron density. The red, orange, yellow and green segments of the lower bar indicate the fraction of residues that contain outliers for ≥ 3 , 2, 1 and 0 types of geometric quality criteria respectively. A grey segment represents the fraction of residues that are not modelled. The numeric value for each fraction is indicated below the corresponding segment, with a dot representing fractions $\leq 5\%$. The upper red bar (where present) indicates the fraction of residues that have poor fit to the electron density. The numeric value is given above the bar.

Mol	Chain	Length	Quality of chain
1	A	334	 5% 85% 11% ..
2	B	178	 8% 77% 15% .. 6%
3	H	230	 11% 77% 19% ..
4	L	218	 24% 86% 11% .
5	C	2	 50% 50%

The following table lists non-polymeric compounds, carbohydrate monomers and non-standard residues in protein, DNA, RNA chains that are outliers for geometric or electron-density-fit criteria:

Mol	Type	Chain	Res	Chirality	Geometry	Clashes	Electron density
8	GOL	A	414	-	-	-	X

2 Entry composition [i](#)

There are 9 unique types of molecules in this entry. The entry contains 7347 atoms, of which 0 are hydrogens and 0 are deuteriums.

In the tables below, the ZeroOcc column contains the number of atoms modelled with zero occupancy, the AltConf column contains the number of residues with at least one atom in alternate conformation and the Trace column contains the number of residues modelled with at most 2 atoms.

- Molecule 1 is a protein called Hemagglutinin HA1.

Mol	Chain	Residues	Atoms					ZeroOcc	AltConf	Trace
			Total	C	N	O	S			
1	A	326	2563	1618	444	490	11	0	0	0

There are 8 discrepancies between the modelled and reference sequences:

Chain	Residue	Modelled	Actual	Comment	Reference
A	-3	ALA	-	expression tag	UNP A7UPX0
A	-2	ASP	-	expression tag	UNP A7UPX0
A	-1	PRO	-	expression tag	UNP A7UPX0
A	0	GLY	-	expression tag	UNP A7UPX0
A	1	TYR	-	expression tag	UNP A7UPX0
A	2	LEU	-	expression tag	UNP A7UPX0
A	3	LEU	-	expression tag	UNP A7UPX0
A	4	GLU	-	expression tag	UNP A7UPX0

- Molecule 2 is a protein called Hemagglutinin HA2.

Mol	Chain	Residues	Atoms					ZeroOcc	AltConf	Trace
			Total	C	N	O	S			
2	B	168	1359	849	233	270	7	0	0	0

There are 2 discrepancies between the modelled and reference sequences:

Chain	Residue	Modelled	Actual	Comment	Reference
B	677	ARG	-	expression tag	UNP A7UPX0
B	678	SER	-	expression tag	UNP A7UPX0

- Molecule 3 is a protein called 6649 antibody heavy chain.

Mol	Chain	Residues	Atoms					ZeroOcc	AltConf	Trace
			Total	C	N	O	S			
3	H	225	1708	1087	284	331	6	0	0	0

There are 2 discrepancies between the modelled and reference sequences:

Chain	Residue	Modelled	Actual	Comment	Reference
H	125	GLY	SER	conflict	UNP S6B2B6
H	148	VAL	ALA	conflict	UNP S6B2B6

- Molecule 4 is a protein called 6649 antibody light chain.

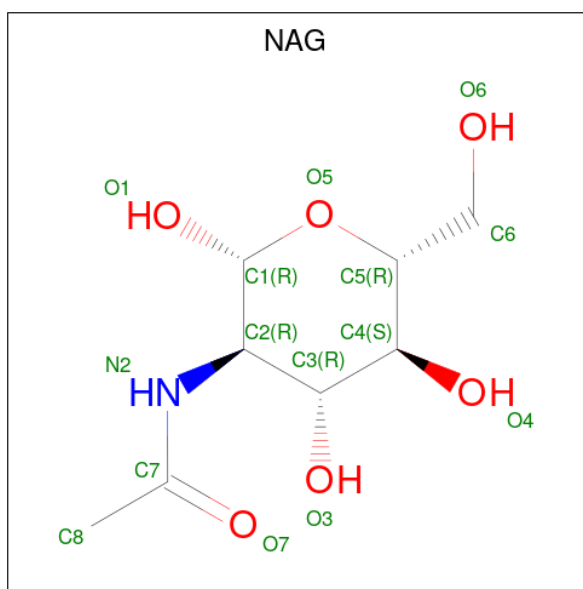
Mol	Chain	Residues	Atoms					ZeroOcc	AltConf	Trace
			Total	C	N	O	S			
4	L	214	1580	989	266	321	4	0	0	0

- Molecule 5 is an oligosaccharide called 2-acetamido-2-deoxy-beta-D-glucopyranose-(1-4)-2-acetamido-2-deoxy-beta-D-glucopyranose.



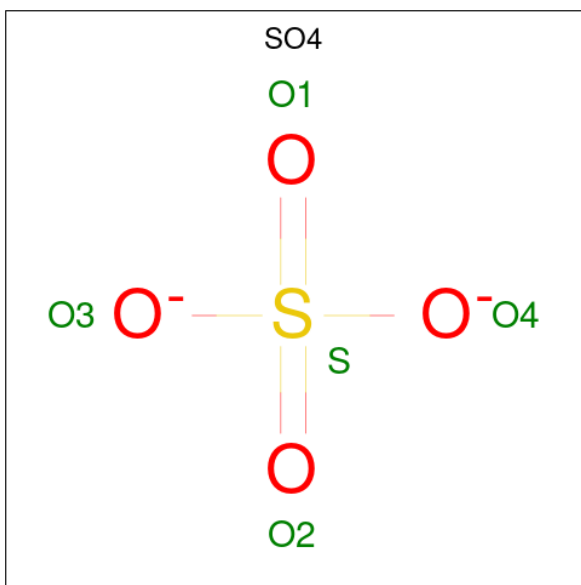
Mol	Chain	Residues	Atoms					ZeroOcc	AltConf	Trace
			Total	C	N	O	S			
5	C	2	28	16	2	10		0	0	0

- Molecule 6 is 2-acetamido-2-deoxy-beta-D-glucopyranose (three-letter code: NAG) (formula: C₈H₁₅NO₆).



Mol	Chain	Residues	Atoms				ZeroOcc	AltConf
6	A	1	Total	C	N	O	0	0
			14	8	1	5		
6	A	1	Total	C	N	O	0	0
			14	8	1	5		
6	A	1	Total	C	N	O	0	0
			14	8	1	5		
6	A	1	Total	C	N	O	0	0
			14	8	1	5		

- Molecule 7 is SULFATE ION (three-letter code: SO4) (formula: O₄S).



Mol	Chain	Residues	Atoms		ZeroOcc	AltConf
7	A	1	Total	O S	0	0
			5	4 1		
7	A	1	Total	O S	0	0
			5	4 1		
7	A	1	Total	O S	0	0
			5	4 1		
7	A	1	Total	O S	0	0
			5	4 1		
7	A	1	Total	O S	0	0
			5	4 1		

- Molecule 8 is GLYCEROL (three-letter code: GOL) (formula: C₃H₈O₃).



Mol	Chain	Residues	Atoms	ZeroOcc	AltConf
8	A	1	Total C O 6 3 3	0	0
8	A	1	Total C O 6 3 3	0	0

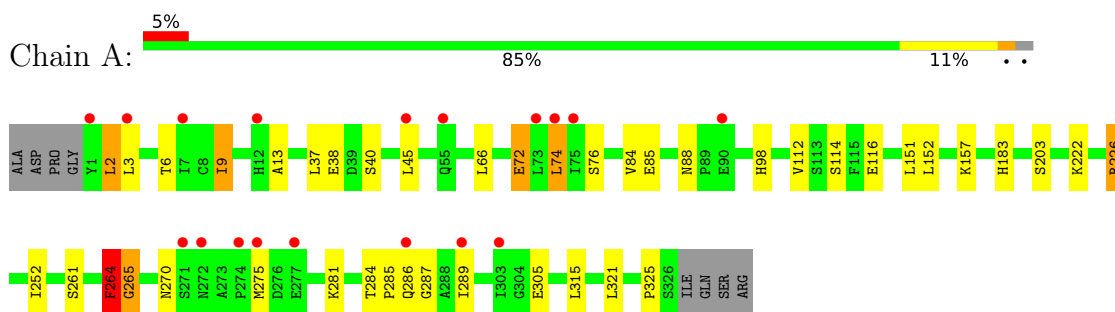
- Molecule 9 is water.

Mol	Chain	Residues	Atoms	ZeroOcc	AltConf
9	A	7	Total O 7 7	0	0
9	H	2	Total O 2 2	0	0
9	L	2	Total O 2 2	0	0

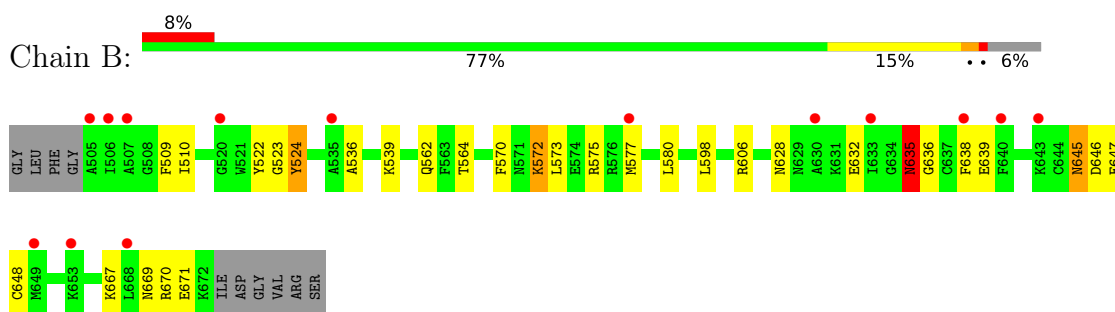
3 Residue-property plots [i](#)

These plots are drawn for all protein, RNA, DNA and oligosaccharide chains in the entry. The first graphic for a chain summarises the proportions of the various outlier classes displayed in the second graphic. The second graphic shows the sequence view annotated by issues in geometry and electron density. Residues are color-coded according to the number of geometric quality criteria for which they contain at least one outlier: green = 0, yellow = 1, orange = 2 and red = 3 or more. A red dot above a residue indicates a poor fit to the electron density ($RSRZ > 2$). Stretches of 2 or more consecutive residues without any outlier are shown as a green connector. Residues present in the sample, but not in the model, are shown in grey.

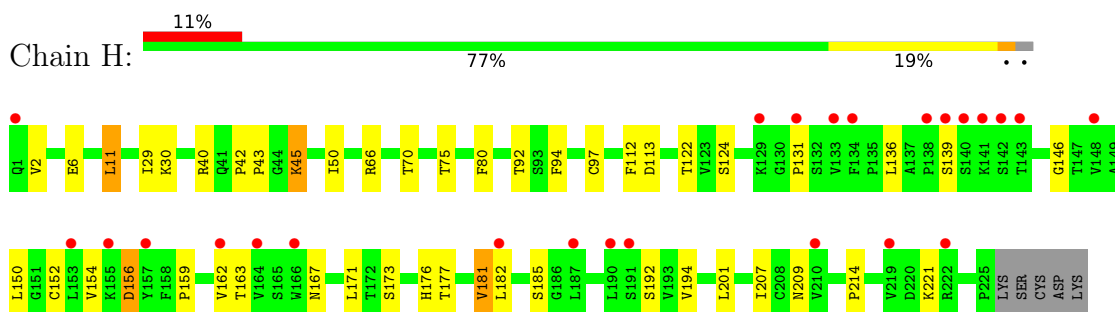
- Molecule 1: Hemagglutinin HA1



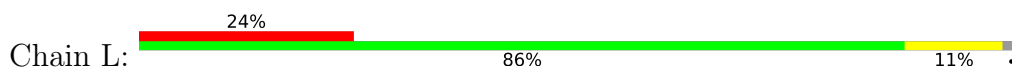
- Molecule 2: Hemagglutinin HA2

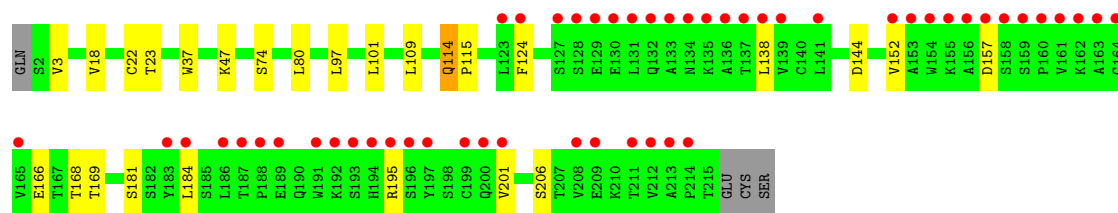


- Molecule 3: 6649 antibody heavy chain



- Molecule 4: 6649 antibody light chain





- Molecule 5: 2-acetamido-2-deoxy-beta-D-glucopyranose-(1-4)-2-acetamido-2-deoxy-beta-D-glucopyranose

Chain C: 50% 50%

MAG1
MAG2

4 Data and refinement statistics i

Property	Value	Source
Space group	P 21 3	Depositor
Cell constants a, b, c, α , β , γ	177.31Å 177.31Å 177.31Å 90.00° 90.00° 90.00°	Depositor
Resolution (Å)	49.18 – 2.79 49.18 – 2.79	Depositor EDS
% Data completeness (in resolution range)	99.3 (49.18-2.79) 99.6 (49.18-2.79)	Depositor EDS
R_{merge}	0.23	Depositor
R_{sym}	(Not available)	Depositor
$\langle I/\sigma(I) \rangle$ ¹	1.09 (at 2.81Å)	Xtrriage
Refinement program	BUSTER 2.10.2	Depositor
R, R_{free}	0.218 , 0.253 0.226 , 0.263	Depositor DCC
R_{free} test set	2291 reflections (4.98%)	wwPDB-VP
Wilson B-factor (Å ²)	78.4	Xtrriage
Anisotropy	0.000	Xtrriage
Bulk solvent k_{sol} (e/Å ³), B_{sol} (Å ²)	0.35 , 66.3	EDS
L-test for twinning ²	$\langle L \rangle = 0.52$, $\langle L^2 \rangle = 0.36$	Xtrriage
Estimated twinning fraction	0.012 for l,-k,h	Xtrriage
F_o, F_c correlation	0.94	EDS
Total number of atoms	7347	wwPDB-VP
Average B, all atoms (Å ²)	85.0	wwPDB-VP

Xtrriage's analysis on translational NCS is as follows: *The largest off-origin peak in the Patterson function is 1.87% of the height of the origin peak. No significant pseudotranslation is detected.*

¹Intensities estimated from amplitudes.

²Theoretical values of $\langle |L| \rangle$, $\langle L^2 \rangle$ for acentric reflections are 0.5, 0.333 respectively for untwinned datasets, and 0.375, 0.2 for perfectly twinned datasets.

5 Model quality [i](#)

5.1 Standard geometry [i](#)

Bond lengths and bond angles in the following residue types are not validated in this section: GOL, SO4, NAG

The Z score for a bond length (or angle) is the number of standard deviations the observed value is removed from the expected value. A bond length (or angle) with $|Z| > 5$ is considered an outlier worth inspection. RMSZ is the root-mean-square of all Z scores of the bond lengths (or angles).

Mol	Chain	Bond lengths		Bond angles	
		RMSZ	# Z >5	RMSZ	# Z >5
1	A	0.54	0/2630	0.79	0/3580
2	B	0.51	0/1385	0.71	0/1861
3	H	0.51	0/1757	0.77	0/2400
4	L	0.49	0/1619	0.71	0/2211
All	All	0.52	0/7391	0.75	0/10052

There are no bond length outliers.

There are no bond angle outliers.

There are no chirality outliers.

There are no planarity outliers.

5.2 Too-close contacts [i](#)

In the following table, the Non-H and H(model) columns list the number of non-hydrogen atoms and hydrogen atoms in the chain respectively. The H(added) column lists the number of hydrogen atoms added and optimized by MolProbity. The Clashes column lists the number of clashes within the asymmetric unit, whereas Symm-Clashes lists symmetry-related clashes.

Mol	Chain	Non-H	H(model)	H(added)	Clashes	Symm-Clashes
1	A	2563	0	2474	18	0
2	B	1359	0	1286	11	0
3	H	1708	0	1657	19	0
4	L	1580	0	1530	8	0
5	C	28	0	25	0	0
6	A	56	0	52	0	0
7	A	30	0	0	0	0
8	A	12	0	16	1	0
9	A	7	0	0	0	0

Continued on next page...

Continued from previous page...

Mol	Chain	Non-H	H(model)	H(added)	Clashes	Symm-Clashes
9	H	2	0	0	0	0
9	L	2	0	0	0	0
All	All	7347	0	7040	51	0

The all-atom clashscore is defined as the number of clashes found per 1000 atoms (including hydrogen atoms). The all-atom clashscore for this structure is 4.

The worst 5 of 51 close contacts within the same asymmetric unit are listed below, sorted by their clash magnitude.

Atom-1	Atom-2	Interatomic distance (Å)	Clash overlap (Å)
1:A:85:GLU:O	1:A:270:ASN:HA	1.85	0.77
1:A:284:THR:HB	1:A:287:GLY:O	1.84	0.77
3:H:40:ARG:HB3	3:H:50:ILE:HD11	1.82	0.61
1:A:284:THR:HG22	1:A:286:GLN:H	1.68	0.59
3:H:167:ASN:HD22	3:H:207:ILE:HG13	1.67	0.59

There are no symmetry-related clashes.

5.3 Torsion angles [i](#)

5.3.1 Protein backbone [i](#)

In the following table, the Percentiles column shows the percent Ramachandran outliers of the chain as a percentile score with respect to all X-ray entries followed by that with respect to entries of similar resolution.

The Analysed column shows the number of residues for which the backbone conformation was analysed, and the total number of residues.

Mol	Chain	Analysed	Favoured	Allowed	Outliers	Percentiles	
1	A	324/334 (97%)	299 (92%)	21 (6%)	4 (1%)	13	39
2	B	166/178 (93%)	154 (93%)	11 (7%)	1 (1%)	25	56
3	H	223/230 (97%)	200 (90%)	20 (9%)	3 (1%)	12	36
4	L	212/218 (97%)	200 (94%)	11 (5%)	1 (0%)	29	61
All	All	925/960 (96%)	853 (92%)	63 (7%)	9 (1%)	15	44

5 of 9 Ramachandran outliers are listed below:

Mol	Chain	Res	Type
1	A	264	PHE
2	B	635	ASN
3	H	146	GLY
1	A	74	LEU
3	H	156	ASP

5.3.2 Protein sidechains [i](#)

In the following table, the Percentiles column shows the percent sidechain outliers of the chain as a percentile score with respect to all X-ray entries followed by that with respect to entries of similar resolution.

The Analysed column shows the number of residues for which the sidechain conformation was analysed, and the total number of residues.

Mol	Chain	Analysed	Rotameric	Outliers	Percentiles	
1	A	286/292 (98%)	267 (93%)	19 (7%)	16	44
2	B	146/153 (95%)	128 (88%)	18 (12%)	4	15
3	H	193/198 (98%)	172 (89%)	21 (11%)	6	19
4	L	177/181 (98%)	164 (93%)	13 (7%)	14	38
All	All	802/824 (97%)	731 (91%)	71 (9%)	9	28

5 of 71 residues with a non-rotameric sidechain are listed below:

Mol	Chain	Res	Type
3	H	221	LYS
4	L	18	VAL
4	L	144	ASP
2	B	572	LYS
2	B	564	THR

Sometimes sidechains can be flipped to improve hydrogen bonding and reduce clashes. 5 of 7 such sidechains are listed below:

Mol	Chain	Res	Type
2	B	628	ASN
2	B	635	ASN
4	L	114	GLN
3	H	167	ASN
2	B	625	GLN

5.3.3 RNA [i](#)

There are no RNA molecules in this entry.

5.4 Non-standard residues in protein, DNA, RNA chains [i](#)

There are no non-standard protein/DNA/RNA residues in this entry.

5.5 Carbohydrates [i](#)

2 monosaccharides are modelled in this entry.

In the following table, the Counts columns list the number of bonds (or angles) for which Mogul statistics could be retrieved, the number of bonds (or angles) that are observed in the model and the number of bonds (or angles) that are defined in the Chemical Component Dictionary. The Link column lists molecule types, if any, to which the group is linked. The Z score for a bond length (or angle) is the number of standard deviations the observed value is removed from the expected value. A bond length (or angle) with $|Z| > 2$ is considered an outlier worth inspection. RMSZ is the root-mean-square of all Z scores of the bond lengths (or angles).

Mol	Type	Chain	Res	Link	Bond lengths			Bond angles		
					Counts	RMSZ	# Z > 2	Counts	RMSZ	# Z > 2
5	NAG	C	1	1,5	14,14,15	0.33	0	17,19,21	0.91	1 (5%)
5	NAG	C	2	5	14,14,15	0.31	0	17,19,21	0.66	0

In the following table, the Chirals column lists the number of chiral outliers, the number of chiral centers analysed, the number of these observed in the model and the number defined in the Chemical Component Dictionary. Similar counts are reported in the Torsion and Rings columns. '-' means no outliers of that kind were identified.

Mol	Type	Chain	Res	Link	Chirals	Torsions	Rings
5	NAG	C	1	1,5	-	0/6/23/26	0/1/1/1
5	NAG	C	2	5	-	1/6/23/26	0/1/1/1

There are no bond length outliers.

All (1) bond angle outliers are listed below:

Mol	Chain	Res	Type	Atoms	Z	Observed(°)	Ideal(°)
5	C	1	NAG	O5-C1-C2	-2.21	107.79	111.29

There are no chirality outliers.

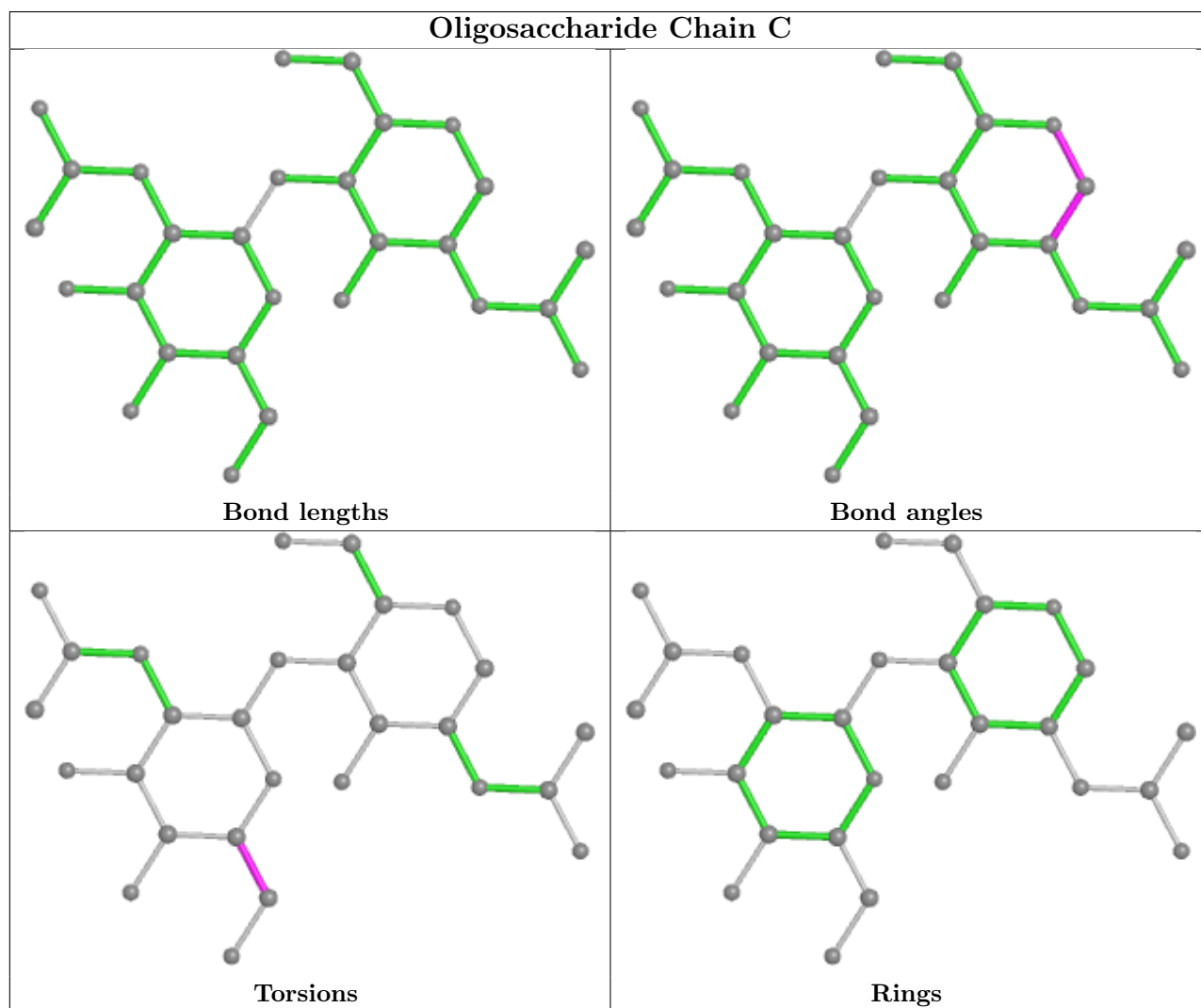
All (1) torsion outliers are listed below:

Mol	Chain	Res	Type	Atoms
5	C	2	NAG	O5-C5-C6-O6

There are no ring outliers.

No monomer is involved in short contacts.

The following is a two-dimensional graphical depiction of Mogul quality analysis of bond lengths, bond angles, torsion angles, and ring geometry for oligosaccharide.



5.6 Ligand geometry [i](#)

12 ligands are modelled in this entry.

In the following table, the Counts columns list the number of bonds (or angles) for which Mogul statistics could be retrieved, the number of bonds (or angles) that are observed in the model and the number of bonds (or angles) that are defined in the Chemical Component Dictionary. The Link column lists molecule types, if any, to which the group is linked. The Z score for a bond

length (or angle) is the number of standard deviations the observed value is removed from the expected value. A bond length (or angle) with $|Z| > 2$ is considered an outlier worth inspection. RMSZ is the root-mean-square of all Z scores of the bond lengths (or angles).

Mol	Type	Chain	Res	Link	Bond lengths			Bond angles		
					Counts	RMSZ	# Z > 2	Counts	RMSZ	# Z > 2
7	SO4	A	407	-	4,4,4	0.22	0	6,6,6	0.24	0
7	SO4	A	409	-	4,4,4	0.22	0	6,6,6	0.24	0
7	SO4	A	410	-	4,4,4	0.15	0	6,6,6	0.20	0
7	SO4	A	412	-	4,4,4	0.23	0	6,6,6	0.24	0
6	NAG	A	404	1	14,14,15	0.31	0	17,19,21	1.19	2 (11%)
6	NAG	A	405	1	14,14,15	0.34	0	17,19,21	0.88	1 (5%)
6	NAG	A	406	1	14,14,15	0.37	0	17,19,21	0.82	1 (5%)
7	SO4	A	411	-	4,4,4	0.19	0	6,6,6	0.76	0
8	GOL	A	413	-	5,5,5	0.14	0	5,5,5	0.44	0
8	GOL	A	414	-	5,5,5	0.09	0	5,5,5	0.27	0
7	SO4	A	408	-	4,4,4	0.18	0	6,6,6	0.27	0
6	NAG	A	403	1	14,14,15	0.36	0	17,19,21	1.31	2 (11%)

In the following table, the Chirals column lists the number of chiral outliers, the number of chiral centers analysed, the number of these observed in the model and the number defined in the Chemical Component Dictionary. Similar counts are reported in the Torsion and Rings columns. '-' means no outliers of that kind were identified.

Mol	Type	Chain	Res	Link	Chirals	Torsions	Rings
6	NAG	A	404	1	-	2/6/23/26	0/1/1/1
6	NAG	A	405	1	-	2/6/23/26	0/1/1/1
6	NAG	A	406	1	-	0/6/23/26	0/1/1/1
8	GOL	A	413	-	-	1/4/4/4	-
8	GOL	A	414	-	-	2/4/4/4	-
6	NAG	A	403	1	-	1/6/23/26	0/1/1/1

There are no bond length outliers.

The worst 5 of 6 bond angle outliers are listed below:

Mol	Chain	Res	Type	Atoms	Z	Observed(°)	Ideal(°)
6	A	403	NAG	C1-C2-N2	3.84	117.06	110.49
6	A	404	NAG	C1-O5-C5	3.56	117.02	112.19
6	A	405	NAG	C1-O5-C5	3.22	116.56	112.19
6	A	403	NAG	C2-N2-C7	2.80	126.88	122.90
6	A	406	NAG	C1-O5-C5	2.12	115.07	112.19

There are no chirality outliers.

5 of 8 torsion outliers are listed below:

Mol	Chain	Res	Type	Atoms
6	A	403	NAG	C1-C2-N2-C7
8	A	414	GOL	C1-C2-C3-O3
8	A	414	GOL	O2-C2-C3-O3
6	A	405	NAG	C4-C5-C6-O6
6	A	405	NAG	O5-C5-C6-O6

There are no ring outliers.

1 monomer is involved in 1 short contact:

Mol	Chain	Res	Type	Clashes	Symm-Clashes
8	A	414	GOL	1	0

5.7 Other polymers [i](#)

There are no such residues in this entry.

5.8 Polymer linkage issues [i](#)

There are no chain breaks in this entry.

6 Fit of model and data [i](#)

6.1 Protein, DNA and RNA chains [i](#)

In the following table, the column labelled ‘#RSRZ> 2’ contains the number (and percentage) of RSRZ outliers, followed by percent RSRZ outliers for the chain as percentile scores relative to all X-ray entries and entries of similar resolution. The OWAB column contains the minimum, median, 95th percentile and maximum values of the occupancy-weighted average B-factor per residue. The column labelled ‘Q< 0.9’ lists the number of (and percentage) of residues with an average occupancy less than 0.9.

Mol	Chain	Analysed	<RSRZ>	#RSRZ>2	OWAB(Å ²)	Q<0.9
1	A	326/334 (97%)	0.58	18 (5%) 25 16	54, 72, 106, 135	0
2	B	168/178 (94%)	0.69	14 (8%) 11 6	54, 99, 137, 148	0
3	H	225/230 (97%)	0.71	25 (11%) 5 3	53, 84, 121, 171	0
4	L	214/218 (98%)	1.22	52 (24%) 0 0	57, 85, 135, 152	0
All	All	933/960 (97%)	0.78	109 (11%) 4 2	53, 80, 131, 171	0

The worst 5 of 109 RSRZ outliers are listed below:

Mol	Chain	Res	Type	RSRZ
4	L	186	LEU	8.0
2	B	668	LEU	7.8
4	L	156	ALA	7.1
3	H	140	SER	6.8
4	L	154	TRP	6.3

6.2 Non-standard residues in protein, DNA, RNA chains [i](#)

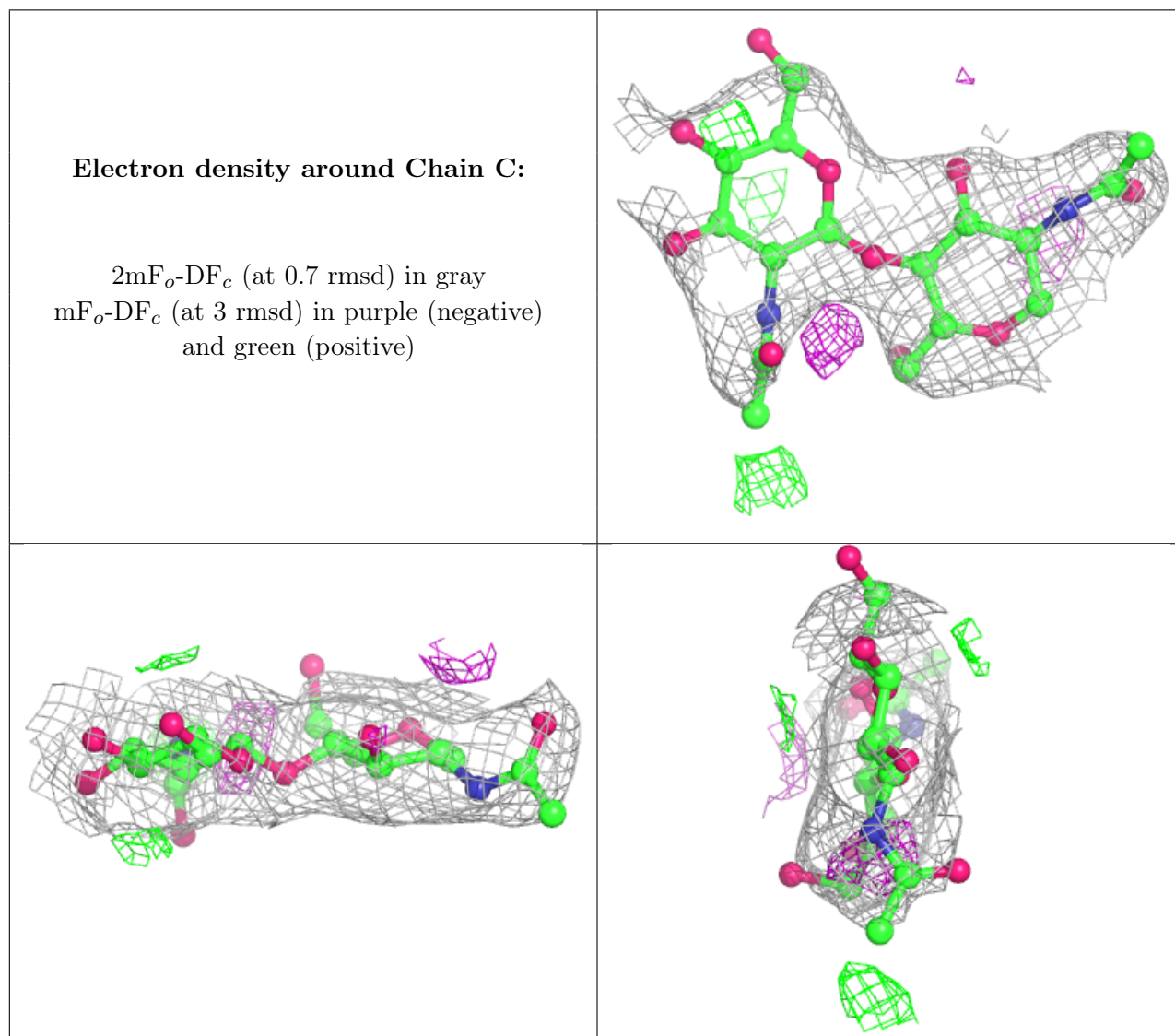
There are no non-standard protein/DNA/RNA residues in this entry.

6.3 Carbohydrates [i](#)

In the following table, the Atoms column lists the number of modelled atoms in the group and the number defined in the chemical component dictionary. The B-factors column lists the minimum, median, 95th percentile and maximum values of B factors of atoms in the group. The column labelled ‘Q< 0.9’ lists the number of atoms with occupancy less than 0.9.

Mol	Type	Chain	Res	Atoms	RSCC	RSR	B-factors(Å ²)	Q<0.9
5	NAG	C	2	14/15	0.79	0.22	116,121,126,127	0
5	NAG	C	1	14/15	0.95	0.25	84,95,101,109	0

The following is a graphical depiction of the model fit to experimental electron density for oligosaccharide. Each fit is shown from different orientation to approximate a three-dimensional view.



6.4 Ligands [i](#)

In the following table, the Atoms column lists the number of modelled atoms in the group and the number defined in the chemical component dictionary. The B-factors column lists the minimum, median, 95th percentile and maximum values of B factors of atoms in the group. The column labelled 'Q< 0.9' lists the number of atoms with occupancy less than 0.9.

Mol	Type	Chain	Res	Atoms	RSCC	RSR	B-factors(Å ²)	Q<0.9
8	GOL	A	414	6/6	0.69	0.45	103,106,108,108	0
6	NAG	A	406	14/15	0.71	0.16	130,133,134,135	0
8	GOL	A	413	6/6	0.75	0.30	88,99,101,102	0
7	SO4	A	409	5/5	0.76	0.20	139,139,141,142	0

Continued on next page...

Continued from previous page...

Mol	Type	Chain	Res	Atoms	RSCC	RSR	B-factors(\AA^2)	Q<0.9
6	NAG	A	405	14/15	0.83	0.27	122,128,131,131	0
7	SO4	A	412	5/5	0.85	0.16	139,139,139,139	0
6	NAG	A	403	14/15	0.87	0.30	133,136,137,138	0
7	SO4	A	410	5/5	0.88	0.24	145,146,146,147	0
6	NAG	A	404	14/15	0.90	0.15	100,102,105,108	0
7	SO4	A	411	5/5	0.92	0.21	106,107,108,109	0
7	SO4	A	407	5/5	0.92	0.14	116,118,120,120	0
7	SO4	A	408	5/5	0.99	0.17	75,79,81,84	0

6.5 Other polymers [i](#)

There are no such residues in this entry.