



Full wwPDB X-ray Structure Validation Report ⓘ

Aug 26, 2024 – 04:23 PM JST

PDB ID : 8W8L
Title : Crystal structure of bacterial prolyl-tRNA synthetase in complex with inhibitor PAA-38
Authors : Luo, Z.; Zhou, H.
Deposited on : 2023-09-03
Resolution : 1.82 Å(reported)

This is a Full wwPDB X-ray Structure Validation Report for a publicly released PDB entry.

We welcome your comments at validation@mail.wwpdb.org

A user guide is available at

<https://www.wwpdb.org/validation/2017/XrayValidationReportHelp>

with specific help available everywhere you see the ⓘ symbol.

The types of validation reports are described at

<http://www.wwpdb.org/validation/2017/FAQs#types>.

The following versions of software and data (see [references ⓘ](#)) were used in the production of this report:

MolProbity : 4.02b-467
Mogul : 1.8.5 (274361), CSD as541be (2020)
Xtrriage (Phenix) : 1.13
EDS : 3.0
buster-report : 1.1.7 (2018)
Percentile statistics : 20231227.v01 (using entries in the PDB archive December 27th 2023)
CCP4 : 9.0.002 (Gargrove)
Density-Fitness : 1.0.11
Ideal geometry (proteins) : Engh & Huber (2001)
Ideal geometry (DNA, RNA) : Parkinson et al. (1996)
Validation Pipeline (wwPDB-VP) : 2.38.2

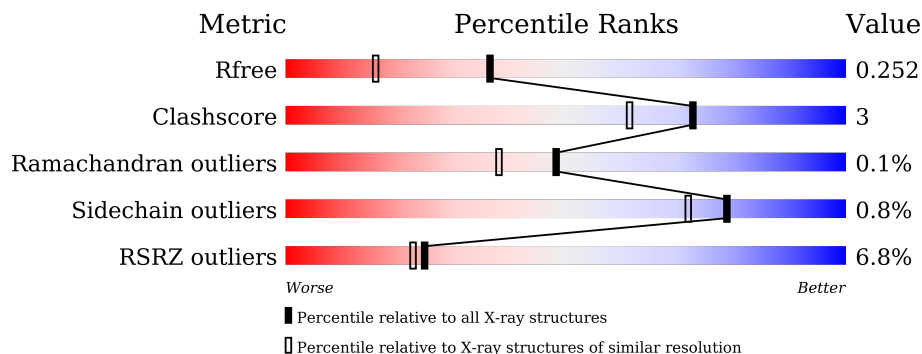
1 Overall quality at a glance

The following experimental techniques were used to determine the structure:

X-RAY DIFFRACTION

The reported resolution of this entry is 1.82 Å.

Percentile scores (ranging between 0-100) for global validation metrics of the entry are shown in the following graphic. The table shows the number of entries on which the scores are based.



Metric	Whole archive (#Entries)	Similar resolution (#Entries, resolution range(Å))
R_{free}	164625	9242 (1.84-1.80)
Clashscore	180529	1080 (1.82-1.82)
Ramachandran outliers	177936	1073 (1.82-1.82)
Sidechain outliers	177891	1073 (1.82-1.82)
RSRZ outliers	164620	9241 (1.84-1.80)

The table below summarises the geometric issues observed across the polymeric chains and their fit to the electron density. The red, orange, yellow and green segments of the lower bar indicate the fraction of residues that contain outliers for ≥ 3 , 2, 1 and 0 types of geometric quality criteria respectively. A grey segment represents the fraction of residues that are not modelled. The numeric value for each fraction is indicated below the corresponding segment, with a dot representing fractions $\leq 5\%$. The upper red bar (where present) indicates the fraction of residues that have poor fit to the electron density. The numeric value is given above the bar.

Mol	Chain	Length	Quality of chain
1	A	579	 4% 94% 2% 2%
1	B	579	 9% 91% 6% 4%

The following table lists non-polymeric compounds, carbohydrate monomers and non-standard residues in protein, DNA, RNA chains that are outliers for geometric or electron-density-fit criteria:

Mol	Type	Chain	Res	Chirality	Geometry	Clashes	Electron density
5	EDO	A	615	-	-	X	-

2 Entry composition [i](#)

There are 6 unique types of molecules in this entry. The entry contains 9700 atoms, of which 0 are hydrogens and 0 are deuteriums.

In the tables below, the ZeroOcc column contains the number of atoms modelled with zero occupancy, the AltConf column contains the number of residues with at least one atom in alternate conformation and the Trace column contains the number of residues modelled with at most 2 atoms.

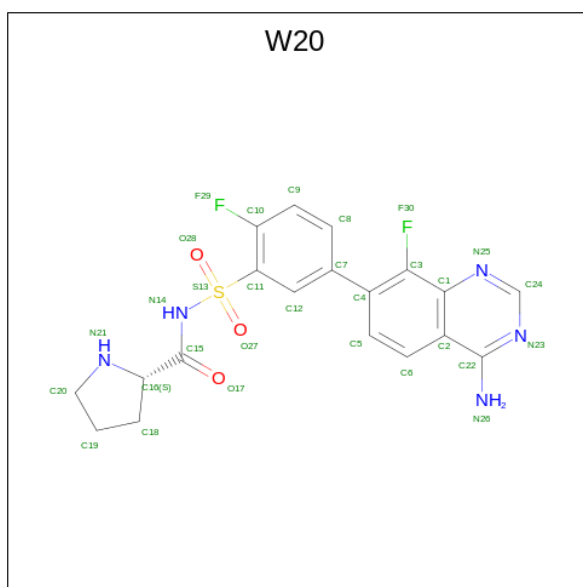
- Molecule 1 is a protein called Proline-tRNA ligase.

Mol	Chain	Residues	Atoms					ZeroOcc	AltConf	Trace
			Total	C	N	O	S			
1	A	572	Total	C	N	O	S	0	3	0
			4405	2793	760	835	17			
1	B	563	Total	C	N	O	S	0	9	0
			4356	2760	750	828	18			

There are 16 discrepancies between the modelled and reference sequences:

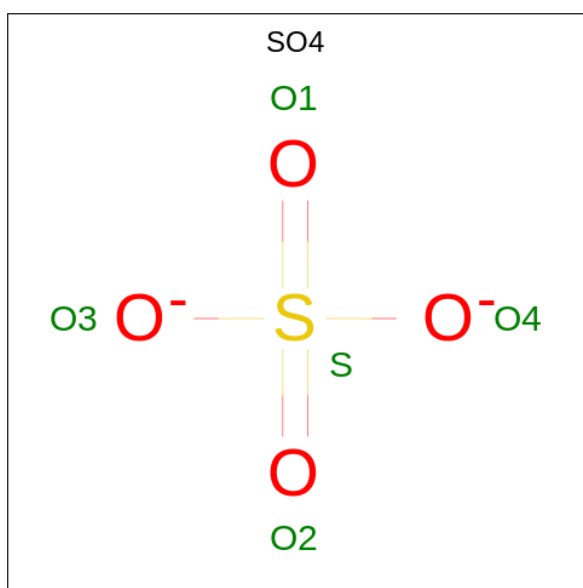
Chain	Residue	Modelled	Actual	Comment	Reference
A	-7	MET	-	initiating methionine	UNP Q9I502
A	-6	GLY	-	expression tag	UNP Q9I502
A	-5	HIS	-	expression tag	UNP Q9I502
A	-4	HIS	-	expression tag	UNP Q9I502
A	-3	HIS	-	expression tag	UNP Q9I502
A	-2	HIS	-	expression tag	UNP Q9I502
A	-1	HIS	-	expression tag	UNP Q9I502
A	0	HIS	-	expression tag	UNP Q9I502
B	-7	MET	-	initiating methionine	UNP Q9I502
B	-6	GLY	-	expression tag	UNP Q9I502
B	-5	HIS	-	expression tag	UNP Q9I502
B	-4	HIS	-	expression tag	UNP Q9I502
B	-3	HIS	-	expression tag	UNP Q9I502
B	-2	HIS	-	expression tag	UNP Q9I502
B	-1	HIS	-	expression tag	UNP Q9I502
B	0	HIS	-	expression tag	UNP Q9I502

- Molecule 2 is (2 {S})- {N}-[5-(4-azanyl-8-fluoranyl-quinazolin-7-yl)-2-fluoranyl-phenyl]sulfonylpyrrolidine-2-carboxamide (three-letter code: W20) (formula: C₁₉H₁₇F₂N₅O₃S) (labeled as "Ligand of Interest" by depositor).



Mol	Chain	Residues	Atoms					ZeroOcc	AltConf	
			Total	C	F	N	O			S
2	A	1	30	19	2	5	3	1	0	0
2	B	1	30	19	2	5	3	1	0	0

- Molecule 3 is SULFATE ION (three-letter code: SO4) (formula: O₄S).



Mol	Chain	Residues	Atoms			ZeroOcc	AltConf
			Total	O	S		
3	A	1	5	4	1	0	0
3	A	1	5	4	1	0	0

Continued on next page...

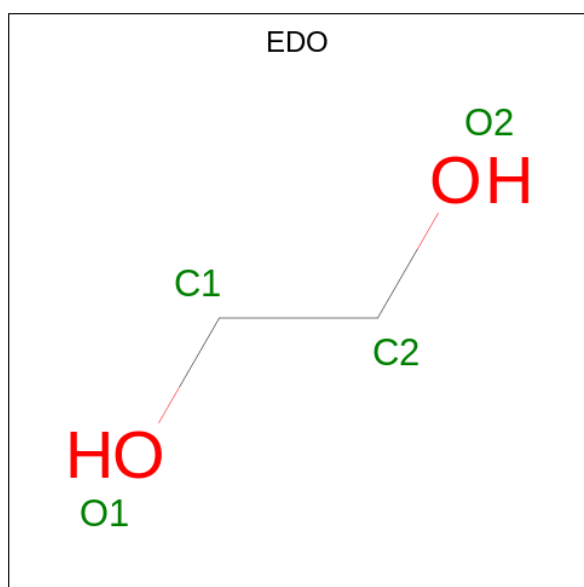
Continued from previous page...

Mol	Chain	Residues	Atoms			ZeroOcc	AltConf
3	B	1	Total	O	S	0	0
			5	4	1		

- Molecule 4 is MAGNESIUM ION (three-letter code: MG) (formula: Mg).

Mol	Chain	Residues	Atoms		ZeroOcc	AltConf
4	A	7	Total	Mg	0	0
			7	7		
4	B	2	Total	Mg	0	0
			2	2		

- Molecule 5 is 1,2-ETHANEDIOL (three-letter code: EDO) (formula: C₂H₆O₂).



Mol	Chain	Residues	Atoms			ZeroOcc	AltConf
5	A	1	Total	C	O	0	0
			4	2	2		
5	A	1	Total	C	O	0	0
			4	2	2		
5	A	1	Total	C	O	0	0
			4	2	2		
5	A	1	Total	C	O	0	0
			4	2	2		
5	A	1	Total	C	O	0	0
			4	2	2		
5	B	1	Total	C	O	0	0
			4	2	2		

Continued on next page...

Continued from previous page...

Mol	Chain	Residues	Atoms	ZeroOcc	AltConf
5	B	1	Total C O 4 2 2	0	0
5	B	1	Total C O 4 2 2	0	0
5	B	1	Total C O 4 2 2	0	0
5	B	1	Total C O 4 2 2	0	0
5	B	1	Total C O 4 2 2	0	0
5	B	1	Total C O 4 2 2	0	0

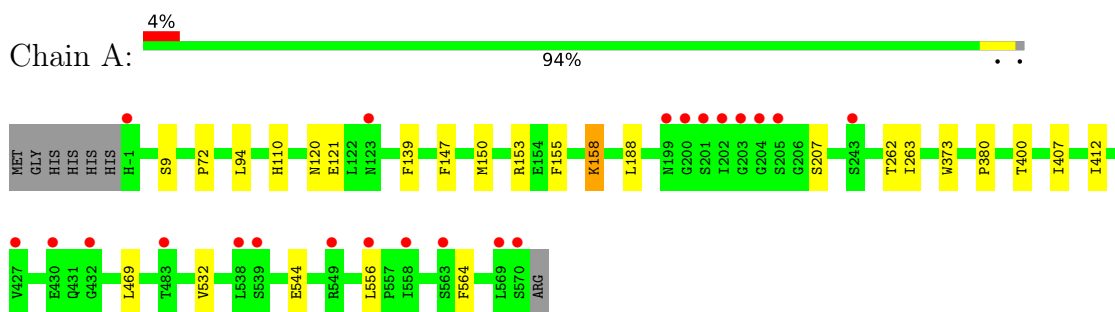
- Molecule 6 is water.

Mol	Chain	Residues	Atoms	ZeroOcc	AltConf
6	A	429	Total O 429 429	0	0
6	B	378	Total O 378 378	0	0

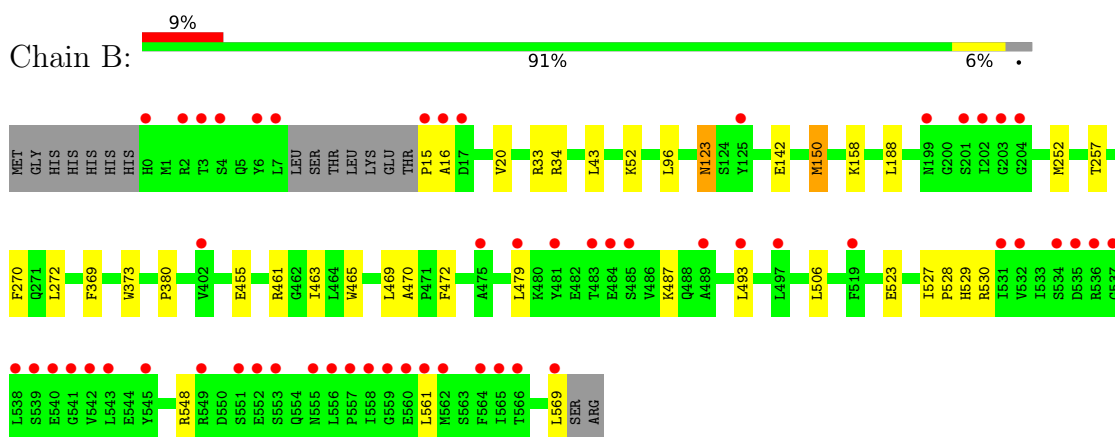
3 Residue-property plots [i](#)

These plots are drawn for all protein, RNA, DNA and oligosaccharide chains in the entry. The first graphic for a chain summarises the proportions of the various outlier classes displayed in the second graphic. The second graphic shows the sequence view annotated by issues in geometry and electron density. Residues are color-coded according to the number of geometric quality criteria for which they contain at least one outlier: green = 0, yellow = 1, orange = 2 and red = 3 or more. A red dot above a residue indicates a poor fit to the electron density ($RSRZ > 2$). Stretches of 2 or more consecutive residues without any outlier are shown as a green connector. Residues present in the sample, but not in the model, are shown in grey.

- Molecule 1: Proline-tRNA ligase



- Molecule 1: Proline-tRNA ligase



4 Data and refinement statistics

Property	Value	Source
Space group	P 21 21 21	Depositor
Cell constants a, b, c, α , β , γ	74.48Å 103.06Å 194.09Å 90.00° 90.00° 90.00°	Depositor
Resolution (Å)	97.05 – 1.82 97.05 – 1.82	Depositor EDS
% Data completeness (in resolution range)	99.0 (97.05-1.82) 99.0 (97.05-1.82)	Depositor EDS
R_{merge}	0.06	Depositor
R_{sym}	(Not available)	Depositor
$\langle I/\sigma(I) \rangle$ ¹	2.26 (at 1.82Å)	Xtrriage
Refinement program	REFMAC 5.8.0415	Depositor
R, R_{free}	0.211 , 0.241 0.222 , 0.252	Depositor DCC
R_{free} test set	6690 reflections (5.01%)	wwPDB-VP
Wilson B-factor (Å ²)	24.3	Xtrriage
Anisotropy	0.123	Xtrriage
Bulk solvent k_{sol} (e/Å ³), B_{sol} (Å ²)	0.37 , 45.2	EDS
L-test for twinning ²	$\langle L \rangle = 0.45$, $\langle L^2 \rangle = 0.28$	Xtrriage
Estimated twinning fraction	No twinning to report.	Xtrriage
F_o, F_c correlation	0.94	EDS
Total number of atoms	9700	wwPDB-VP
Average B, all atoms (Å ²)	28.0	wwPDB-VP

Xtrriage's analysis on translational NCS is as follows: *The largest off-origin peak in the Patterson function is 3.90% of the height of the origin peak. No significant pseudotranslation is detected.*

¹Intensities estimated from amplitudes.

²Theoretical values of $\langle |L| \rangle$, $\langle L^2 \rangle$ for acentric reflections are 0.5, 0.333 respectively for untwinned datasets, and 0.375, 0.2 for perfectly twinned datasets.

5 Model quality

5.1 Standard geometry

Bond lengths and bond angles in the following residue types are not validated in this section: EDO, MG, SO4, W20

The Z score for a bond length (or angle) is the number of standard deviations the observed value is removed from the expected value. A bond length (or angle) with $|Z| > 5$ is considered an outlier worth inspection. RMSZ is the root-mean-square of all Z scores of the bond lengths (or angles).

Mol	Chain	Bond lengths		Bond angles	
		RMSZ	# Z >5	RMSZ	# Z >5
1	A	0.29	0/4490	0.56	0/6088
1	B	0.29	0/4453	0.56	0/6039
All	All	0.29	0/8943	0.56	0/12127

There are no bond length outliers.

There are no bond angle outliers.

There are no chirality outliers.

There are no planarity outliers.

5.2 Too-close contacts

In the following table, the Non-H and H(model) columns list the number of non-hydrogen atoms and hydrogen atoms in the chain respectively. The H(added) column lists the number of hydrogen atoms added and optimized by MolProbity. The Clashes column lists the number of clashes within the asymmetric unit, whereas Symm-Clashes lists symmetry-related clashes.

Mol	Chain	Non-H	H(model)	H(added)	Clashes	Symm-Clashes
1	A	4405	0	4356	28	0
1	B	4356	0	4258	34	0
2	A	30	0	0	0	0
2	B	30	0	0	0	0
3	A	10	0	0	0	0
3	B	5	0	0	0	0
4	A	7	0	0	0	0
4	B	2	0	0	0	0
5	A	20	0	30	5	0
5	B	28	0	42	4	0
6	A	429	0	0	1	0

Continued on next page...

Continued from previous page...

Mol	Chain	Non-H	H(model)	H(added)	Clashes	Symm-Clashes
6	B	378	0	0	2	0
All	All	9700	0	8686	55	0

The all-atom clashscore is defined as the number of clashes found per 1000 atoms (including hydrogen atoms). The all-atom clashscore for this structure is 3.

All (55) close contacts within the same asymmetric unit are listed below, sorted by their clash magnitude.

Atom-1	Atom-2	Interatomic distance (Å)	Clash overlap (Å)
1:A:263:ILE:H	5:A:615:EDO:H22	1.48	0.78
1:A:120:ASN:CG	1:B:33[B]:ARG:HH22	1.88	0.76
1:B:33[B]:ARG:HD2	1:B:33[B]:ARG:C	2.06	0.75
1:A:120:ASN:ND2	1:B:33[B]:ARG:HH22	1.89	0.70
1:A:150:MET:HE1	1:A:407:ILE:CG2	2.22	0.68
1:A:150:MET:HE1	1:A:407:ILE:HG23	1.75	0.68
1:B:33[B]:ARG:HH11	1:B:33[B]:ARG:HG2	1.60	0.66
1:B:33[A]:ARG:HG2	1:B:43:LEU:HD11	1.78	0.65
1:B:529:HIS:CD2	1:B:569:LEU:HD21	2.36	0.61
1:B:33[B]:ARG:HD2	1:B:34:ARG:N	2.15	0.61
1:B:188:LEU:HD22	1:B:469:LEU:HD21	1.83	0.60
1:B:33[B]:ARG:HH11	1:B:33[B]:ARG:CG	2.13	0.60
1:A:263:ILE:H	5:A:615:EDO:C2	2.17	0.57
1:B:150[A]:MET:HE1	1:B:455:GLU:HG3	1.87	0.57
1:B:493:LEU:HD11	1:B:561:LEU:HD23	1.87	0.56
1:B:20:VAL:HG11	5:B:606:EDO:H11	1.87	0.55
1:B:142:GLU:HG3	6:B:804:HOH:O	2.05	0.55
1:A:121:GLU:OE2	1:B:33[A]:ARG:NE	2.40	0.54
1:B:33[B]:ARG:CG	1:B:33[B]:ARG:NH1	2.70	0.53
1:A:262:THR:HB	5:A:615:EDO:H21	1.91	0.53
1:A:556:LEU:CD1	1:A:564:PHE:CG	2.92	0.53
1:A:556:LEU:HD11	1:A:564:PHE:CG	2.44	0.53
1:B:493:LEU:HD11	1:B:561:LEU:CD2	2.40	0.52
1:B:463:ILE:HG21	1:B:465:TRP:CE2	2.45	0.51
1:A:207:SER:HB2	1:A:412:ILE:O	2.11	0.51
1:A:155:PHE:HA	5:A:614:EDO:H21	1.94	0.50
1:B:33[B]:ARG:C	1:B:33[B]:ARG:CD	2.78	0.49
1:A:373:TRP:CZ3	1:A:380:PRO:HD3	2.48	0.49
1:B:33[B]:ARG:CD	1:B:34:ARG:N	2.77	0.48
1:A:139:PHE:HA	1:A:153:ARG:O	2.15	0.46
1:A:120:ASN:CB	1:B:33[B]:ARG:HH22	2.28	0.46
1:A:556:LEU:HD11	1:A:564:PHE:CB	2.46	0.46

Continued on next page...

Continued from previous page...

Atom-1	Atom-2	Interatomic distance (Å)	Clash overlap (Å)
1:A:120:ASN:HB3	1:B:33[B]:ARG:HH12	1.79	0.46
1:A:188:LEU:HD22	1:A:469:LEU:HD21	1.98	0.46
1:A:400[B]:THR:HG22	6:A:1004:HOH:O	2.17	0.45
1:A:94:LEU:HD11	1:B:96:LEU:HD13	1.99	0.45
1:A:120:ASN:ND2	1:B:33[B]:ARG:NH2	2.60	0.45
1:B:530:ARG:HD3	5:B:610:EDO:H22	1.98	0.45
1:A:158:LYS:HD2	1:A:158:LYS:C	2.37	0.45
1:B:373:TRP:CZ3	1:B:380:PRO:HD3	2.53	0.45
1:B:252:MET:CE	5:B:608:EDO:H22	2.48	0.44
1:A:9:SER:CB	1:B:123:ASN:HD21	2.30	0.43
1:B:461:ARG:HD2	1:B:523:GLU:OE1	2.18	0.43
1:A:72:PRO:O	1:A:110:HIS:HE1	2.02	0.43
1:B:257:THR:HG22	1:B:270:PHE:CZ	2.53	0.43
1:B:52:LYS:HE3	1:B:470:ALA:O	2.19	0.43
1:B:472:PHE:HB2	1:B:527:ILE:HD12	2.01	0.42
1:A:556:LEU:HD13	1:A:564:PHE:CD2	2.55	0.42
1:A:147:PHE:HB2	1:A:150:MET:HB2	2.02	0.42
1:B:528:PRO:HA	1:B:548:ARG:HB2	2.02	0.41
1:B:506:LEU:C	1:B:506:LEU:HD23	2.40	0.41
5:B:606:EDO:H22	6:B:924:HOH:O	2.21	0.41
1:B:272:LEU:HD11	1:B:369[B]:PHE:CE1	2.56	0.41
1:A:263:ILE:HG12	5:A:615:EDO:H22	2.03	0.41
1:A:532:VAL:HB	1:A:544:GLU:HB3	2.04	0.40

There are no symmetry-related clashes.

5.3 Torsion angles [i](#)

5.3.1 Protein backbone [i](#)

In the following table, the Percentiles column shows the percent Ramachandran outliers of the chain as a percentile score with respect to all X-ray entries followed by that with respect to entries of similar resolution.

The Analysed column shows the number of residues for which the backbone conformation was analysed, and the total number of residues.

Mol	Chain	Analysed	Favoured	Allowed	Outliers	Percentiles
1	A	573/579 (99%)	560 (98%)	13 (2%)	0	100 100
1	B	568/579 (98%)	558 (98%)	9 (2%)	1 (0%)	44 33

Continued on next page...

Continued from previous page...

Mol	Chain	Analysed	Favoured	Allowed	Outliers	Percentiles
All	All	1141/1158 (98%)	1118 (98%)	22 (2%)	1 (0%)	48 38

All (1) Ramachandran outliers are listed below:

Mol	Chain	Res	Type
1	B	16	ALA

5.3.2 Protein sidechains [i](#)

In the following table, the Percentiles column shows the percent sidechain outliers of the chain as a percentile score with respect to all X-ray entries followed by that with respect to entries of similar resolution.

The Analysed column shows the number of residues for which the sidechain conformation was analysed, and the total number of residues.

Mol	Chain	Analysed	Rotameric	Outliers	Percentiles
1	A	459/483 (95%)	458 (100%)	1 (0%)	92 90
1	B	449/483 (93%)	442 (98%)	7 (2%)	58 45
All	All	908/966 (94%)	900 (99%)	8 (1%)	79 66

All (8) residues with a non-rotameric sidechain are listed below:

Mol	Chain	Res	Type
1	A	158	LYS
1	B	15	PRO
1	B	123	ASN
1	B	150[A]	MET
1	B	150[B]	MET
1	B	158	LYS
1	B	479	LEU
1	B	487	LYS

Sometimes sidechains can be flipped to improve hydrogen bonding and reduce clashes. All (5) such sidechains are listed below:

Mol	Chain	Res	Type
1	A	62	ASN
1	A	100	HIS
1	A	110	HIS
1	B	123	ASN

Continued on next page...

Continued from previous page...

Mol	Chain	Res	Type
1	B	372	ASN

5.3.3 RNA [i](#)

There are no RNA molecules in this entry.

5.4 Non-standard residues in protein, DNA, RNA chains [i](#)

There are no non-standard protein/DNA/RNA residues in this entry.

5.5 Carbohydrates [i](#)

There are no oligosaccharides in this entry.

5.6 Ligand geometry [i](#)

Of 26 ligands modelled in this entry, 9 are monoatomic - leaving 17 for Mogul analysis.

In the following table, the Counts columns list the number of bonds (or angles) for which Mogul statistics could be retrieved, the number of bonds (or angles) that are observed in the model and the number of bonds (or angles) that are defined in the Chemical Component Dictionary. The Link column lists molecule types, if any, to which the group is linked. The Z score for a bond length (or angle) is the number of standard deviations the observed value is removed from the expected value. A bond length (or angle) with $|Z| > 2$ is considered an outlier worth inspection. RMSZ is the root-mean-square of all Z scores of the bond lengths (or angles).

Mol	Type	Chain	Res	Link	Bond lengths			Bond angles		
					Counts	RMSZ	$\# Z > 2$	Counts	RMSZ	$\# Z > 2$
5	EDO	B	605	-	3,3,3	0.10	0	2,2,2	0.18	0
5	EDO	A	614	-	3,3,3	0.14	0	2,2,2	0.37	0
5	EDO	B	608	-	3,3,3	0.05	0	2,2,2	0.17	0
2	W20	A	601	-	33,33,33	0.33	0	43,49,49	0.69	1 (2%)
5	EDO	B	607	-	3,3,3	0.24	0	2,2,2	0.44	0
5	EDO	A	613	-	3,3,3	0.05	0	2,2,2	0.21	0
5	EDO	B	609	-	3,3,3	0.08	0	2,2,2	0.15	0
5	EDO	B	611	-	3,3,3	0.13	0	2,2,2	0.25	0
5	EDO	B	606	-	3,3,3	0.04	0	2,2,2	0.17	0
3	SO4	A	603	-	4,4,4	0.37	0	6,6,6	0.06	0
5	EDO	B	610	-	3,3,3	0.10	0	2,2,2	0.27	0
3	SO4	A	602	-	4,4,4	0.37	0	6,6,6	0.06	0
2	W20	B	601	-	33,33,33	0.43	0	43,49,49	0.65	0

Mol	Type	Chain	Res	Link	Bond lengths			Bond angles		
					Counts	RMSZ	# Z > 2	Counts	RMSZ	# Z > 2
3	SO4	B	602	-	4,4,4	0.37	0	6,6,6	0.05	0
5	EDO	A	612	-	3,3,3	0.07	0	2,2,2	0.10	0
5	EDO	A	615	-	3,3,3	0.16	0	2,2,2	0.47	0
5	EDO	A	611	-	3,3,3	0.11	0	2,2,2	0.15	0

In the following table, the Chirals column lists the number of chiral outliers, the number of chiral centers analysed, the number of these observed in the model and the number defined in the Chemical Component Dictionary. Similar counts are reported in the Torsion and Rings columns. '-' means no outliers of that kind were identified.

Mol	Type	Chain	Res	Link	Chirals	Torsions	Rings
5	EDO	B	605	-	-	0/1/1/1	-
5	EDO	A	614	-	-	1/1/1/1	-
5	EDO	B	608	-	-	0/1/1/1	-
2	W20	A	601	-	-	5/19/26/26	0/4/4/4
5	EDO	B	607	-	-	1/1/1/1	-
5	EDO	B	609	-	-	0/1/1/1	-
5	EDO	B	611	-	-	1/1/1/1	-
5	EDO	B	606	-	-	0/1/1/1	-
5	EDO	A	611	-	-	0/1/1/1	-
5	EDO	B	610	-	-	1/1/1/1	-
2	W20	B	601	-	-	5/19/26/26	0/4/4/4
5	EDO	A	612	-	-	0/1/1/1	-
5	EDO	A	615	-	-	0/1/1/1	-
5	EDO	A	613	-	-	1/1/1/1	-

There are no bond length outliers.

All (1) bond angle outliers are listed below:

Mol	Chain	Res	Type	Atoms	Z	Observed(°)	Ideal(°)
2	A	601	W20	O17-C15-N14	2.53	127.87	123.00

There are no chirality outliers.

All (15) torsion outliers are listed below:

Mol	Chain	Res	Type	Atoms
2	B	601	W20	C5-C4-C7-C8
2	B	601	W20	C5-C4-C7-C12
2	A	601	W20	C5-C4-C7-C12
2	A	601	W20	C5-C4-C7-C8
2	B	601	W20	C3-C4-C7-C12

Continued on next page...

Continued from previous page...

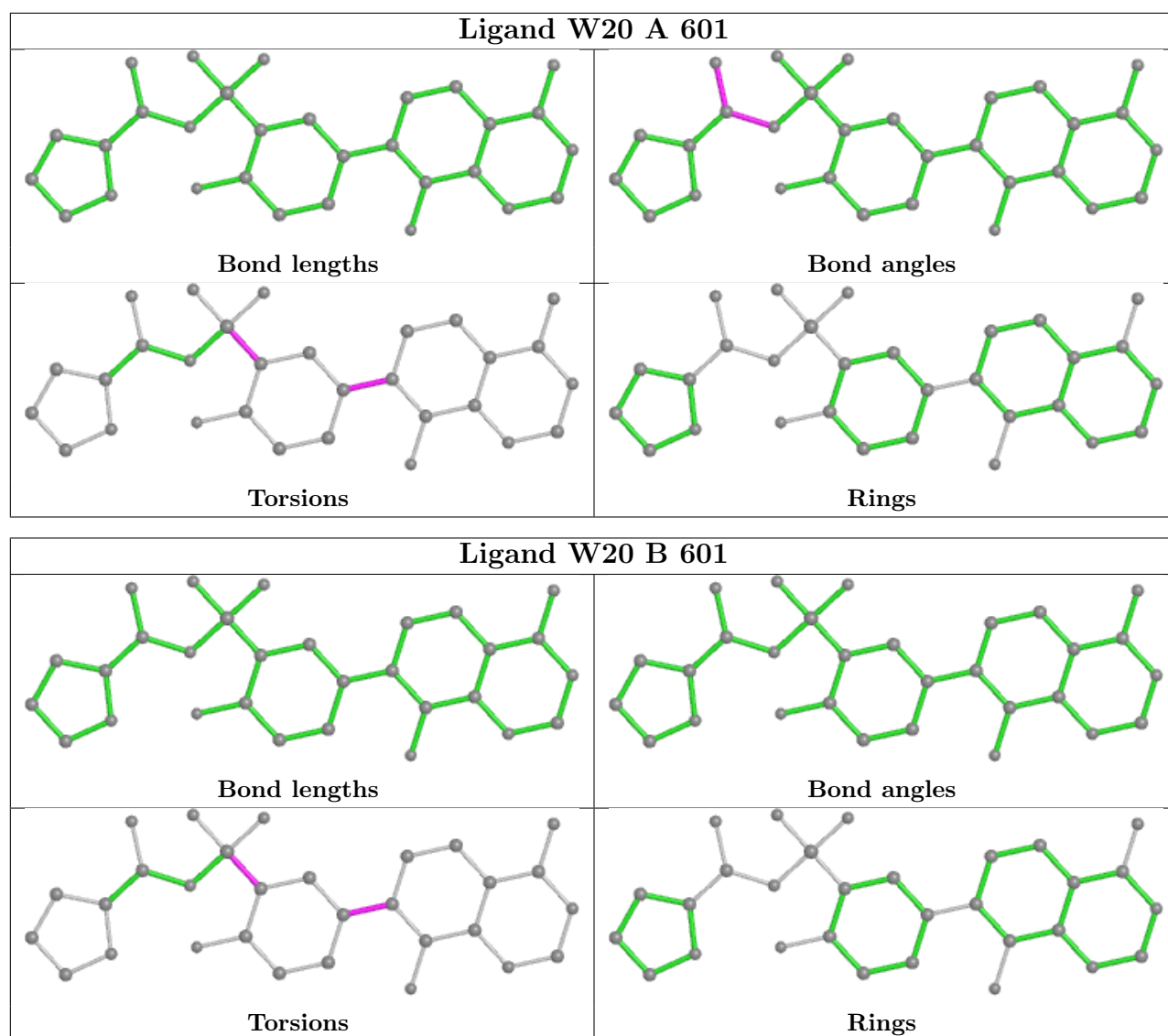
Mol	Chain	Res	Type	Atoms
2	A	601	W20	C3-C4-C7-C8
2	A	601	W20	C3-C4-C7-C12
5	B	611	EDO	O1-C1-C2-O2
2	B	601	W20	C3-C4-C7-C8
5	B	607	EDO	O1-C1-C2-O2
5	A	613	EDO	O1-C1-C2-O2
2	A	601	W20	C10-C11-S13-O27
2	B	601	W20	C10-C11-S13-O27
5	A	614	EDO	O1-C1-C2-O2
5	B	610	EDO	O1-C1-C2-O2

There are no ring outliers.

5 monomers are involved in 9 short contacts:

Mol	Chain	Res	Type	Clashes	Symm-Clashes
5	A	614	EDO	1	0
5	B	608	EDO	1	0
5	B	606	EDO	2	0
5	B	610	EDO	1	0
5	A	615	EDO	4	0

The following is a two-dimensional graphical depiction of Mogul quality analysis of bond lengths, bond angles, torsion angles, and ring geometry for all instances of the Ligand of Interest. In addition, ligands with molecular weight > 250 and outliers as shown on the validation Tables will also be included. For torsion angles, if less than 5% of the Mogul distribution of torsion angles is within 10 degrees of the torsion angle in question, then that torsion angle is considered an outlier. Any bond that is central to one or more torsion angles identified as an outlier by Mogul will be highlighted in the graph. For rings, the root-mean-square deviation (RMSD) between the ring in question and similar rings identified by Mogul is calculated over all ring torsion angles. If the average RMSD is greater than 60 degrees and the minimal RMSD between the ring in question and any Mogul-identified rings is also greater than 60 degrees, then that ring is considered an outlier. The outliers are highlighted in purple. The color gray indicates Mogul did not find sufficient equivalents in the CSD to analyse the geometry.



5.7 Other polymers [i](#)

There are no such residues in this entry.

5.8 Polymer linkage issues [i](#)

There are no chain breaks in this entry.

6 Fit of model and data [i](#)

6.1 Protein, DNA and RNA chains [i](#)

In the following table, the column labelled ‘#RSRZ > 2’ contains the number (and percentage) of RSRZ outliers, followed by percent RSRZ outliers for the chain as percentile scores relative to all X-ray entries and entries of similar resolution. The OWAB column contains the minimum, median, 95th percentile and maximum values of the occupancy-weighted average B-factor per residue. The column labelled ‘Q < 0.9’ lists the number of (and percentage) of residues with an average occupancy less than 0.9.

Mol	Chain	Analysed	<RSRZ>	#RSRZ>2	OWAB(Å ²)	Q<0.9
1	A	572/579 (98%)	0.25	22 (3%) 44 44	13, 25, 43, 60	3 (0%)
1	B	563/579 (97%)	0.47	55 (9%) 14 13	10, 25, 52, 68	9 (1%)
All	All	1135/1158 (98%)	0.36	77 (6%) 25 23	10, 25, 49, 68	12 (1%)

All (77) RSRZ outliers are listed below:

Mol	Chain	Res	Type	RSRZ
1	B	558	ILE	5.4
1	A	200	GLY	4.7
1	B	15	PRO	4.6
1	A	201	SER	4.4
1	A	204	GLY	4.4
1	B	553	SER	4.3
1	B	556	LEU	4.1
1	B	204	GLY	4.0
1	B	542	VAL	4.0
1	B	489	ALA	4.0
1	B	541	GLY	3.8
1	B	569	LEU	3.8
1	A	-1	HIS	3.8
1	B	7	LEU	3.6
1	B	559	GLY	3.6
1	B	479	LEU	3.5
1	B	202	ILE	3.5
1	A	202	ILE	3.4
1	B	566	THR	3.3
1	B	16	ALA	3.3
1	B	483[A]	THR	3.3
1	B	561	LEU	3.3
1	B	538	LEU	3.2
1	B	203	GLY	3.2

Continued on next page...

Continued from previous page...

Mol	Chain	Res	Type	RSRZ
1	A	203	GLY	3.1
1	B	539	SER	3.1
1	B	557	PRO	3.0
1	A	432	GLY	2.9
1	B	0	HIS	2.9
1	A	558	ILE	2.9
1	A	205	SER	2.9
1	B	545	TYR	2.8
1	B	560	GLU	2.8
1	B	543	LEU	2.8
1	B	484	GLU	2.8
1	B	531	ILE	2.8
1	B	201	SER	2.7
1	B	199	ASN	2.7
1	B	565	ILE	2.7
1	B	6	TYR	2.7
1	B	3	THR	2.7
1	A	538	LEU	2.7
1	A	556	LEU	2.6
1	B	551	SER	2.6
1	B	540	GLU	2.6
1	B	535	ASP	2.6
1	B	564	PHE	2.5
1	A	483	THR	2.5
1	B	2	ARG	2.5
1	A	570	SER	2.5
1	B	475	ALA	2.4
1	B	4	SER	2.4
1	A	430	GLU	2.4
1	A	563	SER	2.4
1	B	552	GLU	2.4
1	B	481	TYR	2.4
1	B	536	ARG	2.3
1	A	539	SER	2.3
1	B	17	ASP	2.3
1	A	569	LEU	2.3
1	A	123	ASN	2.2
1	A	199	ASN	2.2
1	B	402	VAL	2.2
1	B	485	SER	2.2
1	A	549	ARG	2.2
1	A	427	VAL	2.2

Continued on next page...

Continued from previous page...

Mol	Chain	Res	Type	RSRZ
1	B	532	VAL	2.2
1	B	562	MET	2.2
1	B	125	TYR	2.2
1	B	534	SER	2.1
1	B	537	GLY	2.1
1	B	555	ASN	2.1
1	B	519	PHE	2.0
1	A	243	SER	2.0
1	B	493	LEU	2.0
1	B	497	LEU	2.0
1	B	549	ARG	2.0

6.2 Non-standard residues in protein, DNA, RNA chains [i](#)

There are no non-standard protein/DNA/RNA residues in this entry.

6.3 Carbohydrates [i](#)

There are no monosaccharides in this entry.

6.4 Ligands [i](#)

In the following table, the Atoms column lists the number of modelled atoms in the group and the number defined in the chemical component dictionary. The B-factors column lists the minimum, median, 95th percentile and maximum values of B factors of atoms in the group. The column labelled 'Q< 0.9' lists the number of atoms with occupancy less than 0.9.

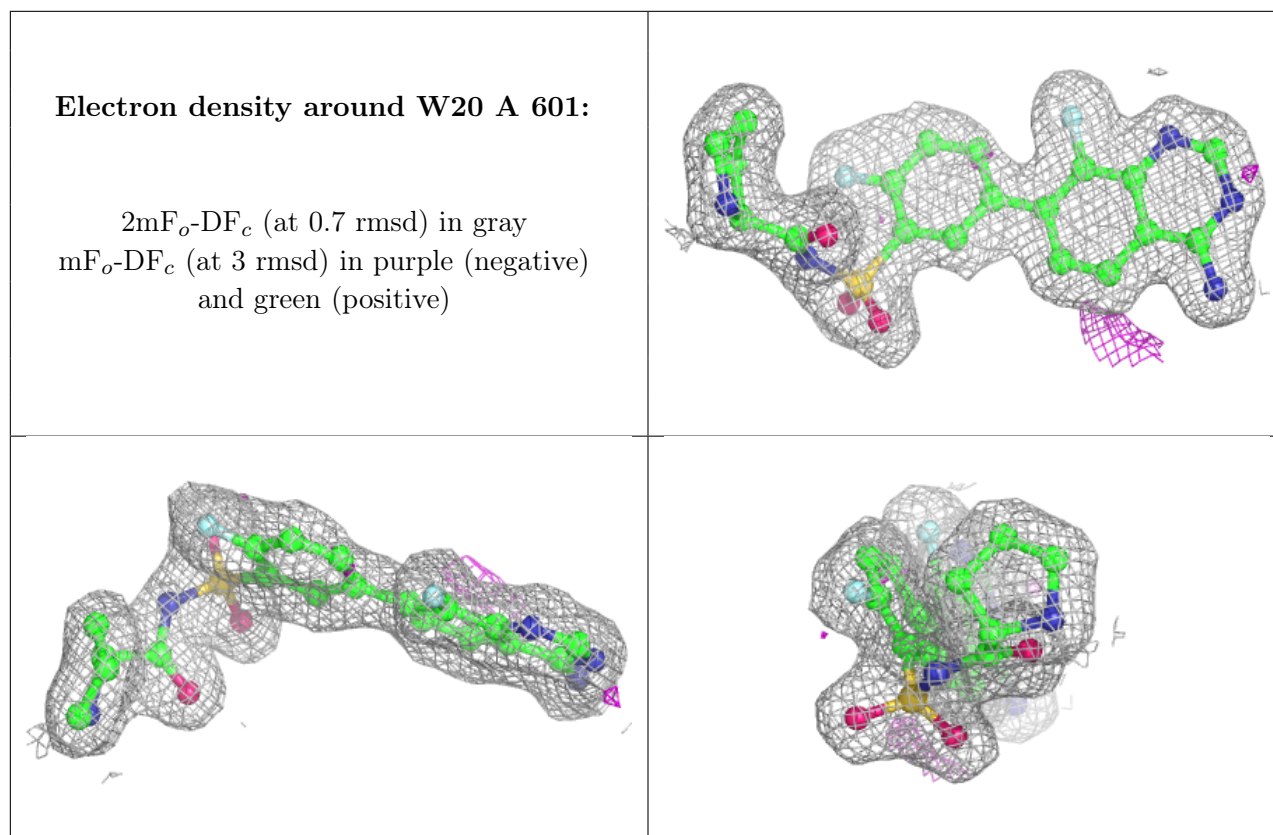
Mol	Type	Chain	Res	Atoms	RSCC	RSR	B-factors(Å ²)	Q<0.9
5	EDO	B	605	4/4	0.71	0.23	45,46,47,48	0
5	EDO	B	607	4/4	0.73	0.24	38,38,39,40	0
3	SO4	A	602	5/5	0.78	0.15	65,67,69,70	0
5	EDO	A	615	4/4	0.80	0.15	34,35,36,36	0
5	EDO	A	614	4/4	0.82	0.21	43,44,44,45	0
5	EDO	A	611	4/4	0.84	0.15	39,41,42,43	0
5	EDO	B	609	4/4	0.84	0.16	34,36,37,38	0
5	EDO	A	612	4/4	0.85	0.16	46,46,46,46	0
5	EDO	B	608	4/4	0.88	0.14	43,43,43,45	0
5	EDO	B	606	4/4	0.89	0.14	39,39,39,40	0
5	EDO	B	611	4/4	0.89	0.12	33,34,34,35	0
4	MG	A	608	1/1	0.91	0.15	44,44,44,44	0

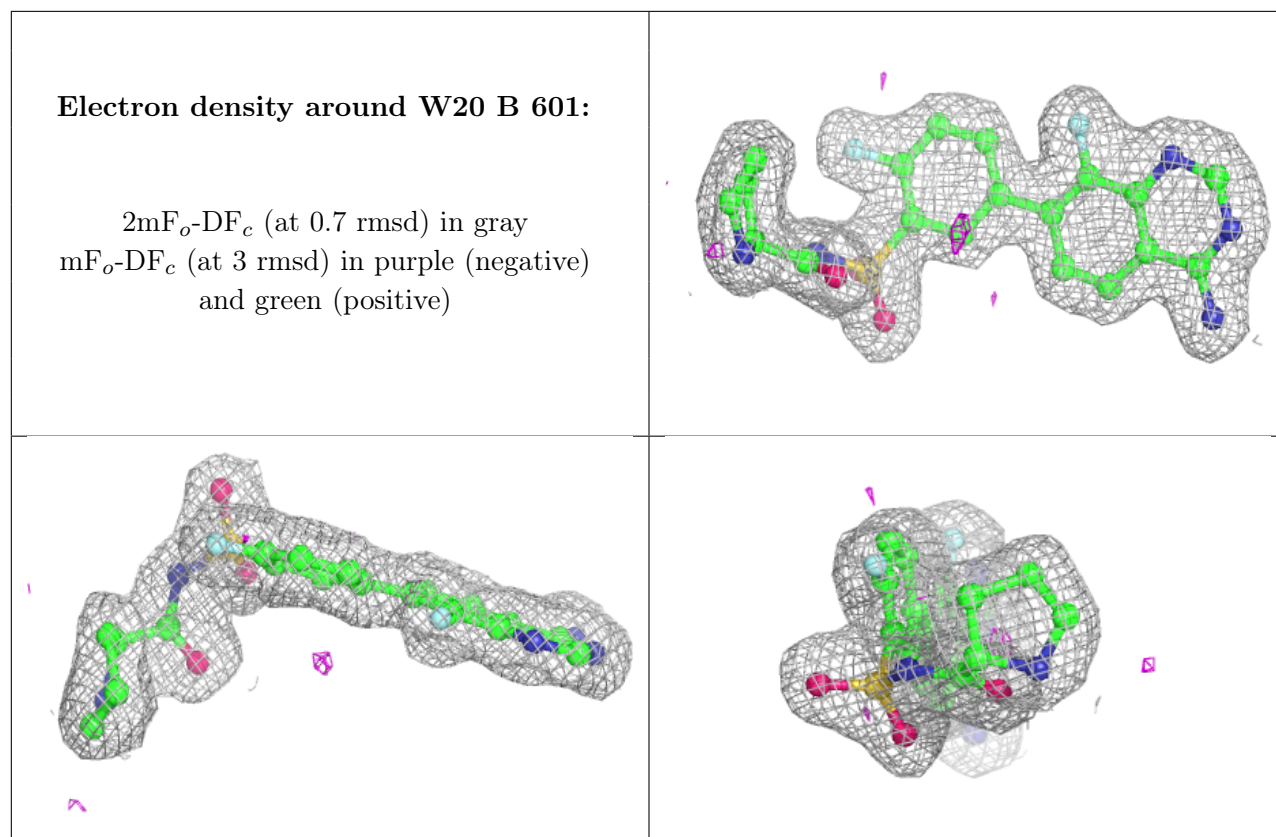
Continued on next page...

Continued from previous page...

Mol	Type	Chain	Res	Atoms	RSCC	RSR	B-factors(\AA^2)	Q<0.9
4	MG	A	610	1/1	0.91	0.14	34,34,34,34	0
5	EDO	B	610	4/4	0.91	0.15	44,45,45,45	0
3	SO4	B	602	5/5	0.91	0.09	52,52,53,56	0
4	MG	B	603	1/1	0.94	0.13	33,33,33,33	0
4	MG	A	605	1/1	0.94	0.11	34,34,34,34	0
4	MG	A	607	1/1	0.95	0.14	27,27,27,27	0
3	SO4	A	603	5/5	0.95	0.15	37,38,40,40	0
5	EDO	A	613	4/4	0.95	0.10	36,36,36,36	0
4	MG	A	604	1/1	0.96	0.10	30,30,30,30	0
4	MG	A	606	1/1	0.96	0.08	29,29,29,29	0
2	W20	A	601	30/30	0.97	0.06	18,21,23,23	0
2	W20	B	601	30/30	0.97	0.06	18,20,22,26	0
4	MG	B	604	1/1	0.97	0.06	30,30,30,30	0
4	MG	A	609	1/1	0.98	0.06	29,29,29,29	0

The following is a graphical depiction of the model fit to experimental electron density of all instances of the Ligand of Interest. In addition, ligands with molecular weight > 250 and outliers as shown on the geometry validation Tables will also be included. Each fit is shown from different orientation to approximate a three-dimensional view.





6.5 Other polymers [i](#)

There are no such residues in this entry.