



wwPDB EM Validation Summary Report ⓘ

Nov 5, 2022 – 06:31 PM EDT

PDB ID : 5W9M
EMDB ID : EMD-8788
Title : MERS S ectodomain trimer in complex with variable domain of neutralizing antibody G4
Authors : Pallesen, J.; Ward, A.B.
Deposited on : 2017-06-23
Resolution : 4.70 Å(reported)

This is a wwPDB EM Validation Summary Report for a publicly released PDB entry.

We welcome your comments at validation@mail.wwpdb.org

A user guide is available at

<https://www.wwpdb.org/validation/2017/EMValidationReportHelp>

with specific help available everywhere you see the ⓘ symbol.

The types of validation reports are described at

<http://www.wwpdb.org/validation/2017/FAQs#types>.

The following versions of software and data (see [references ⓘ](#)) were used in the production of this report:

EMDB validation analysis : 0.0.1.dev43
MolProbity : 4.02b-467
Percentile statistics : 20191225.v01 (using entries in the PDB archive December 25th 2019)
MapQ : 1.9.9
Ideal geometry (proteins) : Engh & Huber (2001)
Ideal geometry (DNA, RNA) : Parkinson et al. (1996)
Validation Pipeline (wwPDB-VP) : 2.31.2

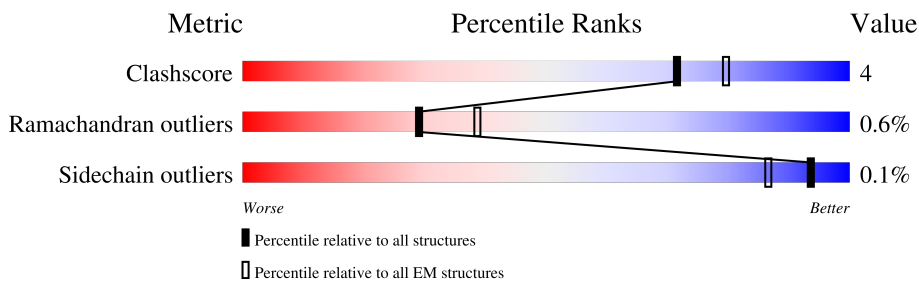
1 Overall quality at a glance

The following experimental techniques were used to determine the structure:

ELECTRON MICROSCOPY

The reported resolution of this entry is 4.70 Å.

Percentile scores (ranging between 0-100) for global validation metrics of the entry are shown in the following graphic. The table shows the number of entries on which the scores are based.



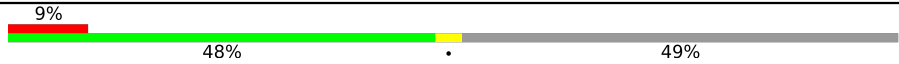

Metric	Whole archive (#Entries)	EM structures (#Entries)
Clashscore	158937	4297
Ramachandran outliers	154571	4023
Sidechain outliers	154315	3826

The table below summarises the geometric issues observed across the polymeric chains and their fit to the map. The red, orange, yellow and green segments of the bar indicate the fraction of residues that contain outliers for ≥ 3 , 2, 1 and 0 types of geometric quality criteria respectively. A grey segment represents the fraction of residues that are not modelled. The numeric value for each fraction is indicated below the corresponding segment, with a dot representing fractions $\leq 5\%$. The upper red bar (where present) indicates the fraction of residues that have poor fit to the EM map (all-atom inclusion $< 40\%$). The numeric value is given above the bar.

Mol	Chain	Length	Quality of chain
1	A	1329	
1	D	1329	
1	E	1329	
1	F	1329	
1	G	1329	
1	J	1329	
2	B	233	
2	H	233	

Continued on next page...

Continued from previous page...

Mol	Chain	Length	Quality of chain
3	C	218	 <p>9% 48% 49%</p>
3	I	218	 <p>7% 49% 49%</p>

2 Entry composition [i](#)

There are 3 unique types of molecules in this entry. The entry contains 31126 atoms, of which 0 are hydrogens and 0 are deuteriums.

In the tables below, the AltConf column contains the number of residues with at least one atom in alternate conformation and the Trace column contains the number of residues modelled with at most 2 atoms.

- Molecule 1 is a protein called Spike glycoprotein.

Mol	Chain	Residues	Atoms					AltConf	Trace
			Total	C	N	O	S		
1	A	463	3545	2243	600	685	17	0	0
1	D	457	3496	2214	590	675	17	0	0
1	G	463	3545	2243	600	685	17	0	0
1	E	726	5658	3601	926	1097	34	0	0
1	F	726	5658	3601	926	1097	34	0	0
1	J	726	5658	3601	926	1097	34	0	0

There are 258 discrepancies between the modelled and reference sequences:

Chain	Residue	Modelled	Actual	Comment	Reference
A	506	PHE	LEU	conflict	UNP W5ZZF5
A	748	ALA	ARG	conflict	UNP W5ZZF5
A	751	GLY	ARG	conflict	UNP W5ZZF5
A	1060	PRO	VAL	engineered mutation	UNP W5ZZF5
A	1061	PRO	LEU	engineered mutation	UNP W5ZZF5
A	1292	GLY	-	expression tag	UNP W5ZZF5
A	1293	SER	-	expression tag	UNP W5ZZF5
A	1294	GLY	-	expression tag	UNP W5ZZF5
A	1295	TYR	-	expression tag	UNP W5ZZF5
A	1296	ILE	-	expression tag	UNP W5ZZF5
A	1297	PRO	-	expression tag	UNP W5ZZF5
A	1298	GLU	-	expression tag	UNP W5ZZF5
A	1299	ALA	-	expression tag	UNP W5ZZF5
A	1300	PRO	-	expression tag	UNP W5ZZF5
A	1301	ARG	-	expression tag	UNP W5ZZF5
A	1302	ASP	-	expression tag	UNP W5ZZF5
A	1303	GLY	-	expression tag	UNP W5ZZF5
A	1304	GLN	-	expression tag	UNP W5ZZF5

Continued on next page...

Continued from previous page...

Chain	Residue	Modelled	Actual	Comment	Reference
A	1305	ALA	-	expression tag	UNP W5ZZF5
A	1306	TYR	-	expression tag	UNP W5ZZF5
A	1307	VAL	-	expression tag	UNP W5ZZF5
A	1308	ARG	-	expression tag	UNP W5ZZF5
A	1309	LYS	-	expression tag	UNP W5ZZF5
A	1310	ASP	-	expression tag	UNP W5ZZF5
A	1311	GLY	-	expression tag	UNP W5ZZF5
A	1312	GLU	-	expression tag	UNP W5ZZF5
A	1313	TRP	-	expression tag	UNP W5ZZF5
A	1314	VAL	-	expression tag	UNP W5ZZF5
A	1315	LEU	-	expression tag	UNP W5ZZF5
A	1316	LEU	-	expression tag	UNP W5ZZF5
A	1317	SER	-	expression tag	UNP W5ZZF5
A	1318	THR	-	expression tag	UNP W5ZZF5
A	1319	PHE	-	expression tag	UNP W5ZZF5
A	1320	LEU	-	expression tag	UNP W5ZZF5
A	1321	GLY	-	expression tag	UNP W5ZZF5
A	1322	ARG	-	expression tag	UNP W5ZZF5
A	1323	SER	-	expression tag	UNP W5ZZF5
A	1324	LEU	-	expression tag	UNP W5ZZF5
A	1325	GLU	-	expression tag	UNP W5ZZF5
A	1326	VAL	-	expression tag	UNP W5ZZF5
A	1327	LEU	-	expression tag	UNP W5ZZF5
A	1328	PHE	-	expression tag	UNP W5ZZF5
A	1329	GLN	-	expression tag	UNP W5ZZF5
D	506	PHE	LEU	conflict	UNP W5ZZF5
D	748	ALA	ARG	conflict	UNP W5ZZF5
D	751	GLY	ARG	conflict	UNP W5ZZF5
D	1060	PRO	VAL	engineered mutation	UNP W5ZZF5
D	1061	PRO	LEU	engineered mutation	UNP W5ZZF5
D	1292	GLY	-	expression tag	UNP W5ZZF5
D	1293	SER	-	expression tag	UNP W5ZZF5
D	1294	GLY	-	expression tag	UNP W5ZZF5
D	1295	TYR	-	expression tag	UNP W5ZZF5
D	1296	ILE	-	expression tag	UNP W5ZZF5
D	1297	PRO	-	expression tag	UNP W5ZZF5
D	1298	GLU	-	expression tag	UNP W5ZZF5
D	1299	ALA	-	expression tag	UNP W5ZZF5
D	1300	PRO	-	expression tag	UNP W5ZZF5
D	1301	ARG	-	expression tag	UNP W5ZZF5
D	1302	ASP	-	expression tag	UNP W5ZZF5
D	1303	GLY	-	expression tag	UNP W5ZZF5

Continued on next page...

Continued from previous page...

Chain	Residue	Modelled	Actual	Comment	Reference
D	1304	GLN	-	expression tag	UNP W5ZZF5
D	1305	ALA	-	expression tag	UNP W5ZZF5
D	1306	TYR	-	expression tag	UNP W5ZZF5
D	1307	VAL	-	expression tag	UNP W5ZZF5
D	1308	ARG	-	expression tag	UNP W5ZZF5
D	1309	LYS	-	expression tag	UNP W5ZZF5
D	1310	ASP	-	expression tag	UNP W5ZZF5
D	1311	GLY	-	expression tag	UNP W5ZZF5
D	1312	GLU	-	expression tag	UNP W5ZZF5
D	1313	TRP	-	expression tag	UNP W5ZZF5
D	1314	VAL	-	expression tag	UNP W5ZZF5
D	1315	LEU	-	expression tag	UNP W5ZZF5
D	1316	LEU	-	expression tag	UNP W5ZZF5
D	1317	SER	-	expression tag	UNP W5ZZF5
D	1318	THR	-	expression tag	UNP W5ZZF5
D	1319	PHE	-	expression tag	UNP W5ZZF5
D	1320	LEU	-	expression tag	UNP W5ZZF5
D	1321	GLY	-	expression tag	UNP W5ZZF5
D	1322	ARG	-	expression tag	UNP W5ZZF5
D	1323	SER	-	expression tag	UNP W5ZZF5
D	1324	LEU	-	expression tag	UNP W5ZZF5
D	1325	GLU	-	expression tag	UNP W5ZZF5
D	1326	VAL	-	expression tag	UNP W5ZZF5
D	1327	LEU	-	expression tag	UNP W5ZZF5
D	1328	PHE	-	expression tag	UNP W5ZZF5
D	1329	GLN	-	expression tag	UNP W5ZZF5
G	506	PHE	LEU	conflict	UNP W5ZZF5
G	748	ALA	ARG	conflict	UNP W5ZZF5
G	751	GLY	ARG	conflict	UNP W5ZZF5
G	1060	PRO	VAL	engineered mutation	UNP W5ZZF5
G	1061	PRO	LEU	engineered mutation	UNP W5ZZF5
G	1292	GLY	-	expression tag	UNP W5ZZF5
G	1293	SER	-	expression tag	UNP W5ZZF5
G	1294	GLY	-	expression tag	UNP W5ZZF5
G	1295	TYR	-	expression tag	UNP W5ZZF5
G	1296	ILE	-	expression tag	UNP W5ZZF5
G	1297	PRO	-	expression tag	UNP W5ZZF5
G	1298	GLU	-	expression tag	UNP W5ZZF5
G	1299	ALA	-	expression tag	UNP W5ZZF5
G	1300	PRO	-	expression tag	UNP W5ZZF5
G	1301	ARG	-	expression tag	UNP W5ZZF5
G	1302	ASP	-	expression tag	UNP W5ZZF5

Continued on next page...

Continued from previous page...

Chain	Residue	Modelled	Actual	Comment	Reference
G	1303	GLY	-	expression tag	UNP W5ZZF5
G	1304	GLN	-	expression tag	UNP W5ZZF5
G	1305	ALA	-	expression tag	UNP W5ZZF5
G	1306	TYR	-	expression tag	UNP W5ZZF5
G	1307	VAL	-	expression tag	UNP W5ZZF5
G	1308	ARG	-	expression tag	UNP W5ZZF5
G	1309	LYS	-	expression tag	UNP W5ZZF5
G	1310	ASP	-	expression tag	UNP W5ZZF5
G	1311	GLY	-	expression tag	UNP W5ZZF5
G	1312	GLU	-	expression tag	UNP W5ZZF5
G	1313	TRP	-	expression tag	UNP W5ZZF5
G	1314	VAL	-	expression tag	UNP W5ZZF5
G	1315	LEU	-	expression tag	UNP W5ZZF5
G	1316	LEU	-	expression tag	UNP W5ZZF5
G	1317	SER	-	expression tag	UNP W5ZZF5
G	1318	THR	-	expression tag	UNP W5ZZF5
G	1319	PHE	-	expression tag	UNP W5ZZF5
G	1320	LEU	-	expression tag	UNP W5ZZF5
G	1321	GLY	-	expression tag	UNP W5ZZF5
G	1322	ARG	-	expression tag	UNP W5ZZF5
G	1323	SER	-	expression tag	UNP W5ZZF5
G	1324	LEU	-	expression tag	UNP W5ZZF5
G	1325	GLU	-	expression tag	UNP W5ZZF5
G	1326	VAL	-	expression tag	UNP W5ZZF5
G	1327	LEU	-	expression tag	UNP W5ZZF5
G	1328	PHE	-	expression tag	UNP W5ZZF5
G	1329	GLN	-	expression tag	UNP W5ZZF5
E	506	PHE	LEU	conflict	UNP W5ZZF5
E	748	ALA	ARG	conflict	UNP W5ZZF5
E	751	GLY	ARG	conflict	UNP W5ZZF5
E	1060	PRO	VAL	engineered mutation	UNP W5ZZF5
E	1061	PRO	LEU	engineered mutation	UNP W5ZZF5
E	1292	GLY	-	expression tag	UNP W5ZZF5
E	1293	SER	-	expression tag	UNP W5ZZF5
E	1294	GLY	-	expression tag	UNP W5ZZF5
E	1295	TYR	-	expression tag	UNP W5ZZF5
E	1296	ILE	-	expression tag	UNP W5ZZF5
E	1297	PRO	-	expression tag	UNP W5ZZF5
E	1298	GLU	-	expression tag	UNP W5ZZF5
E	1299	ALA	-	expression tag	UNP W5ZZF5
E	1300	PRO	-	expression tag	UNP W5ZZF5
E	1301	ARG	-	expression tag	UNP W5ZZF5

Continued on next page...

Continued from previous page...

Chain	Residue	Modelled	Actual	Comment	Reference
E	1302	ASP	-	expression tag	UNP W5ZZF5
E	1303	GLY	-	expression tag	UNP W5ZZF5
E	1304	GLN	-	expression tag	UNP W5ZZF5
E	1305	ALA	-	expression tag	UNP W5ZZF5
E	1306	TYR	-	expression tag	UNP W5ZZF5
E	1307	VAL	-	expression tag	UNP W5ZZF5
E	1308	ARG	-	expression tag	UNP W5ZZF5
E	1309	LYS	-	expression tag	UNP W5ZZF5
E	1310	ASP	-	expression tag	UNP W5ZZF5
E	1311	GLY	-	expression tag	UNP W5ZZF5
E	1312	GLU	-	expression tag	UNP W5ZZF5
E	1313	TRP	-	expression tag	UNP W5ZZF5
E	1314	VAL	-	expression tag	UNP W5ZZF5
E	1315	LEU	-	expression tag	UNP W5ZZF5
E	1316	LEU	-	expression tag	UNP W5ZZF5
E	1317	SER	-	expression tag	UNP W5ZZF5
E	1318	THR	-	expression tag	UNP W5ZZF5
E	1319	PHE	-	expression tag	UNP W5ZZF5
E	1320	LEU	-	expression tag	UNP W5ZZF5
E	1321	GLY	-	expression tag	UNP W5ZZF5
E	1322	ARG	-	expression tag	UNP W5ZZF5
E	1323	SER	-	expression tag	UNP W5ZZF5
E	1324	LEU	-	expression tag	UNP W5ZZF5
E	1325	GLU	-	expression tag	UNP W5ZZF5
E	1326	VAL	-	expression tag	UNP W5ZZF5
E	1327	LEU	-	expression tag	UNP W5ZZF5
E	1328	PHE	-	expression tag	UNP W5ZZF5
E	1329	GLN	-	expression tag	UNP W5ZZF5
F	506	PHE	LEU	conflict	UNP W5ZZF5
F	748	ALA	ARG	conflict	UNP W5ZZF5
F	751	GLY	ARG	conflict	UNP W5ZZF5
F	1060	PRO	VAL	engineered mutation	UNP W5ZZF5
F	1061	PRO	LEU	engineered mutation	UNP W5ZZF5
F	1292	GLY	-	expression tag	UNP W5ZZF5
F	1293	SER	-	expression tag	UNP W5ZZF5
F	1294	GLY	-	expression tag	UNP W5ZZF5
F	1295	TYR	-	expression tag	UNP W5ZZF5
F	1296	ILE	-	expression tag	UNP W5ZZF5
F	1297	PRO	-	expression tag	UNP W5ZZF5
F	1298	GLU	-	expression tag	UNP W5ZZF5
F	1299	ALA	-	expression tag	UNP W5ZZF5
F	1300	PRO	-	expression tag	UNP W5ZZF5

Continued on next page...

Continued from previous page...

Chain	Residue	Modelled	Actual	Comment	Reference
F	1301	ARG	-	expression tag	UNP W5ZZF5
F	1302	ASP	-	expression tag	UNP W5ZZF5
F	1303	GLY	-	expression tag	UNP W5ZZF5
F	1304	GLN	-	expression tag	UNP W5ZZF5
F	1305	ALA	-	expression tag	UNP W5ZZF5
F	1306	TYR	-	expression tag	UNP W5ZZF5
F	1307	VAL	-	expression tag	UNP W5ZZF5
F	1308	ARG	-	expression tag	UNP W5ZZF5
F	1309	LYS	-	expression tag	UNP W5ZZF5
F	1310	ASP	-	expression tag	UNP W5ZZF5
F	1311	GLY	-	expression tag	UNP W5ZZF5
F	1312	GLU	-	expression tag	UNP W5ZZF5
F	1313	TRP	-	expression tag	UNP W5ZZF5
F	1314	VAL	-	expression tag	UNP W5ZZF5
F	1315	LEU	-	expression tag	UNP W5ZZF5
F	1316	LEU	-	expression tag	UNP W5ZZF5
F	1317	SER	-	expression tag	UNP W5ZZF5
F	1318	THR	-	expression tag	UNP W5ZZF5
F	1319	PHE	-	expression tag	UNP W5ZZF5
F	1320	LEU	-	expression tag	UNP W5ZZF5
F	1321	GLY	-	expression tag	UNP W5ZZF5
F	1322	ARG	-	expression tag	UNP W5ZZF5
F	1323	SER	-	expression tag	UNP W5ZZF5
F	1324	LEU	-	expression tag	UNP W5ZZF5
F	1325	GLU	-	expression tag	UNP W5ZZF5
F	1326	VAL	-	expression tag	UNP W5ZZF5
F	1327	LEU	-	expression tag	UNP W5ZZF5
F	1328	PHE	-	expression tag	UNP W5ZZF5
F	1329	GLN	-	expression tag	UNP W5ZZF5
J	506	PHE	LEU	conflict	UNP W5ZZF5
J	748	ALA	ARG	conflict	UNP W5ZZF5
J	751	GLY	ARG	conflict	UNP W5ZZF5
J	1060	PRO	VAL	engineered mutation	UNP W5ZZF5
J	1061	PRO	LEU	engineered mutation	UNP W5ZZF5
J	1292	GLY	-	expression tag	UNP W5ZZF5
J	1293	SER	-	expression tag	UNP W5ZZF5
J	1294	GLY	-	expression tag	UNP W5ZZF5
J	1295	TYR	-	expression tag	UNP W5ZZF5
J	1296	ILE	-	expression tag	UNP W5ZZF5
J	1297	PRO	-	expression tag	UNP W5ZZF5
J	1298	GLU	-	expression tag	UNP W5ZZF5
J	1299	ALA	-	expression tag	UNP W5ZZF5

Continued on next page...

Continued from previous page...

Chain	Residue	Modelled	Actual	Comment	Reference
J	1300	PRO	-	expression tag	UNP W5ZZF5
J	1301	ARG	-	expression tag	UNP W5ZZF5
J	1302	ASP	-	expression tag	UNP W5ZZF5
J	1303	GLY	-	expression tag	UNP W5ZZF5
J	1304	GLN	-	expression tag	UNP W5ZZF5
J	1305	ALA	-	expression tag	UNP W5ZZF5
J	1306	TYR	-	expression tag	UNP W5ZZF5
J	1307	VAL	-	expression tag	UNP W5ZZF5
J	1308	ARG	-	expression tag	UNP W5ZZF5
J	1309	LYS	-	expression tag	UNP W5ZZF5
J	1310	ASP	-	expression tag	UNP W5ZZF5
J	1311	GLY	-	expression tag	UNP W5ZZF5
J	1312	GLU	-	expression tag	UNP W5ZZF5
J	1313	TRP	-	expression tag	UNP W5ZZF5
J	1314	VAL	-	expression tag	UNP W5ZZF5
J	1315	LEU	-	expression tag	UNP W5ZZF5
J	1316	LEU	-	expression tag	UNP W5ZZF5
J	1317	SER	-	expression tag	UNP W5ZZF5
J	1318	THR	-	expression tag	UNP W5ZZF5
J	1319	PHE	-	expression tag	UNP W5ZZF5
J	1320	LEU	-	expression tag	UNP W5ZZF5
J	1321	GLY	-	expression tag	UNP W5ZZF5
J	1322	ARG	-	expression tag	UNP W5ZZF5
J	1323	SER	-	expression tag	UNP W5ZZF5
J	1324	LEU	-	expression tag	UNP W5ZZF5
J	1325	GLU	-	expression tag	UNP W5ZZF5
J	1326	VAL	-	expression tag	UNP W5ZZF5
J	1327	LEU	-	expression tag	UNP W5ZZF5
J	1328	PHE	-	expression tag	UNP W5ZZF5
J	1329	GLN	-	expression tag	UNP W5ZZF5

- Molecule 2 is a protein called G4 VH.

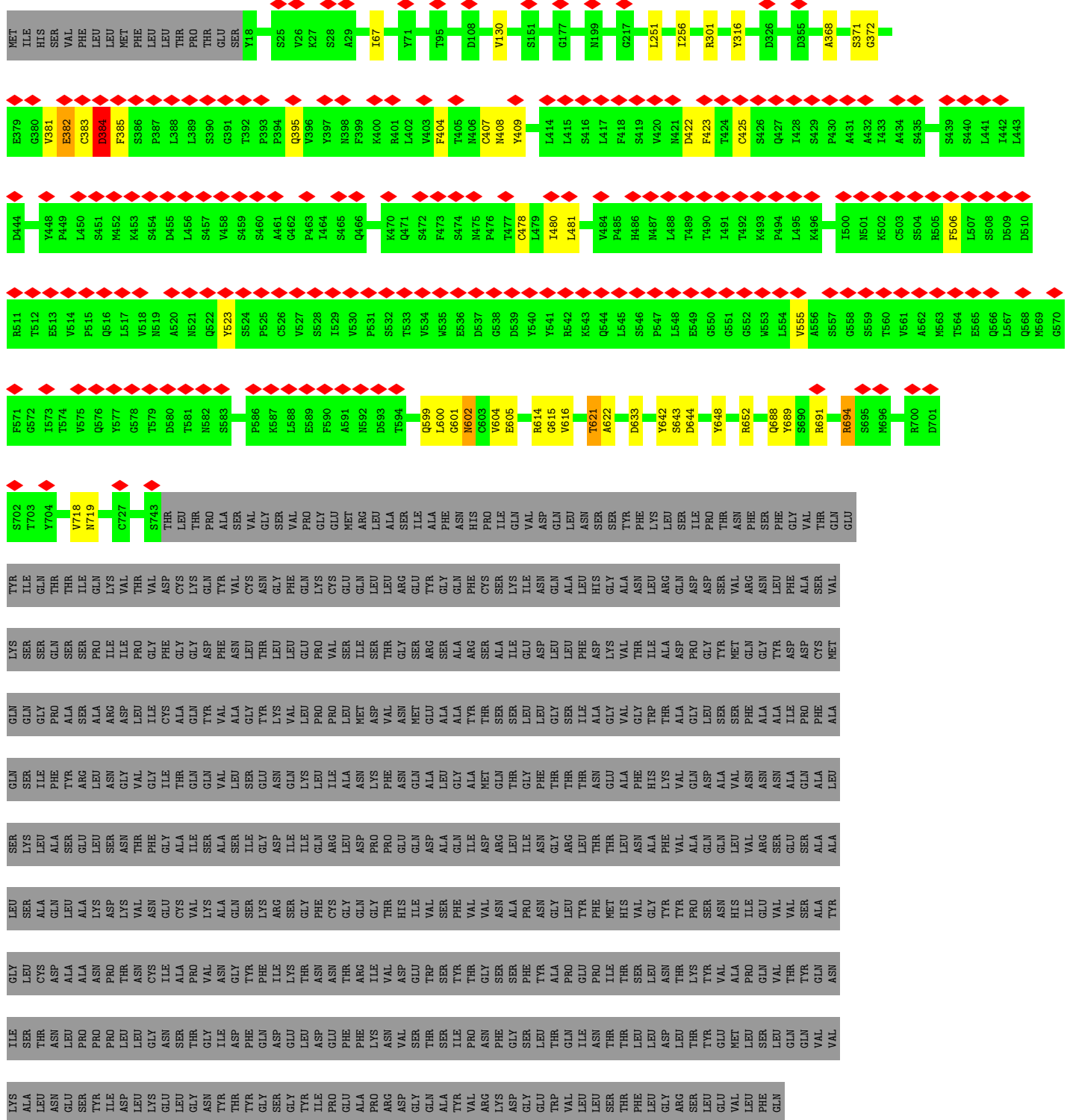
Mol	Chain	Residues	Atoms					AltConf	Trace
2	B	119	Total	C	N	O	S	0	0
			948	602	156	185	5		
2	H	119	Total	C	N	O	S	0	0
			948	602	156	185	5		

- Molecule 3 is a protein called G4 VL.

Mol	Chain	Residues	Atoms					AltConf	Trace
			Total	C	N	O	S		
3	C	111	835	522	143	166	4	0	0
3	I	111	835	522	143	166	4	0	0

TYR	THR	THR	TYR	GLY	GLY	GLY	GLY	TYR	ILE	PRO	GLU	GLU	ALA	ALA	TYR	VAL	VAL	ARG	LYS	ASP	GLY	GLY	GLU	TRP	VAL	LEU	LEU	LEU	SER	THR	THR	PHE	LEU	LEU	GLN
-----	-----	-----	-----	-----	-----	-----	-----	-----	-----	-----	-----	-----	-----	-----	-----	-----	-----	-----	-----	-----	-----	-----	-----	-----	-----	-----	-----	-----	-----	-----	-----	-----	-----	-----	-----

• Molecule 1: Spike glycoprotein



4 Experimental information

Property	Value	Source
EM reconstruction method	SINGLE PARTICLE	Depositor
Imposed symmetry	POINT, C1	Depositor
Number of particles used	9333	Depositor
Resolution determination method	FSC 0.143 CUT-OFF	Depositor
CTF correction method	PHASE FLIPPING AND AMPLITUDE CORRECTION	Depositor
Microscope	FEI TITAN KRIOS	Depositor
Voltage (kV)	300	Depositor
Electron dose ($e^-/\text{\AA}^2$)	1.89	Depositor
Minimum defocus (nm)	700	Depositor
Maximum defocus (nm)	2500	Depositor
Magnification	29000	Depositor
Image detector	GATAN K2 SUMMIT (4k x 4k)	Depositor
Maximum map value	0.058	Depositor
Minimum map value	-0.025	Depositor
Average map value	0.000	Depositor
Map value standard deviation	0.003	Depositor
Recommended contour level	0.015	Depositor
Map size (Å)	310.08, 310.08, 310.08	wwPDB
Map dimensions	304, 304, 304	wwPDB
Map angles (°)	90.0, 90.0, 90.0	wwPDB
Pixel spacing (Å)	1.02, 1.02, 1.02	Depositor

5 Model quality [i](#)

5.1 Standard geometry [i](#)

The Z score for a bond length (or angle) is the number of standard deviations the observed value is removed from the expected value. A bond length (or angle) with $|Z| > 5$ is considered an outlier worth inspection. RMSZ is the root-mean-square of all Z scores of the bond lengths (or angles).

Mol	Chain	Bond lengths		Bond angles	
		RMSZ	# Z >5	RMSZ	# Z >5
1	A	0.76	0/3618	0.82	2/4921 (0.0%)
1	D	0.76	0/3568	0.82	4/4851 (0.1%)
1	E	0.71	0/5803	0.88	6/7901 (0.1%)
1	F	0.72	0/5803	0.88	6/7901 (0.1%)
1	G	0.76	0/3618	0.84	3/4921 (0.1%)
1	J	0.73	0/5803	0.90	6/7901 (0.1%)
2	B	0.74	0/972	0.87	1/1317 (0.1%)
2	H	0.77	0/972	0.85	0/1317
3	C	0.76	0/852	0.83	1/1153 (0.1%)
3	I	0.77	0/852	0.87	0/1153
All	All	0.74	0/31861	0.86	29/43336 (0.1%)

There are no bond length outliers.

The worst 5 of 29 bond angle outliers are listed below:

Mol	Chain	Res	Type	Atoms	Z	Observed(°)	Ideal(°)
1	E	691	ARG	NE-CZ-NH2	-8.66	115.97	120.30
1	D	932	TYR	CB-CG-CD2	-7.88	116.27	121.00
1	J	184	TYR	CB-CG-CD1	-7.62	116.43	121.00
1	J	691	ARG	NE-CZ-NH2	-7.20	116.70	120.30
1	F	642	TYR	CB-CG-CD2	-7.09	116.75	121.00

There are no chirality outliers.

There are no planarity outliers.

5.2 Too-close contacts [i](#)

In the following table, the Non-H and H(model) columns list the number of non-hydrogen atoms and hydrogen atoms in the chain respectively. The H(added) column lists the number of hydrogen atoms added and optimized by MolProbity. The Clashes column lists the number of clashes within the asymmetric unit, whereas Symm-Clashes lists symmetry-related clashes.

Mol	Chain	Non-H	H(model)	H(added)	Clashes	Symm-Clashes
1	A	3545	0	3470	9	0
1	D	3496	0	3420	22	0
1	E	5658	0	5423	85	0
1	F	5658	0	5423	49	0
1	G	3545	0	3471	14	0
1	J	5658	0	5425	26	0
2	B	948	0	904	2	0
2	H	948	0	904	0	0
3	C	835	0	816	4	0
3	I	835	0	816	2	0
All	All	31126	0	30072	212	0

The all-atom clashscore is defined as the number of clashes found per 1000 atoms (including hydrogen atoms). The all-atom clashscore for this structure is 4.

The worst 5 of 212 close contacts within the same asymmetric unit are listed below, sorted by their clash magnitude.

Atom-1	Atom-2	Interatomic distance (Å)	Clash overlap (Å)
1:F:506:PHE:HE2	1:F:555:VAL:CG2	0.99	1.62
1:J:506:PHE:CE2	1:J:555:VAL:HG21	1.13	1.60
1:E:506:PHE:CE2	1:E:555:VAL:CG2	1.76	1.58
1:J:506:PHE:CE2	1:J:555:VAL:CG2	1.94	1.51
1:F:506:PHE:CE2	1:F:555:VAL:CG2	1.74	1.43

There are no symmetry-related clashes.

5.3 Torsion angles [i](#)

5.3.1 Protein backbone [i](#)

In the following table, the Percentiles column shows the percent Ramachandran outliers of the chain as a percentile score with respect to all PDB entries followed by that with respect to all EM entries.

The Analysed column shows the number of residues for which the backbone conformation was analysed, and the total number of residues.

Mol	Chain	Analysed	Favoured	Allowed	Outliers	Percentiles
1	A	459/1329 (34%)	443 (96%)	15 (3%)	1 (0%)	47 81
1	D	451/1329 (34%)	435 (96%)	12 (3%)	4 (1%)	17 56

Continued on next page...

Continued from previous page...

Mol	Chain	Analysed	Favoured	Allowed	Outliers	Percentiles	
1	E	724/1329 (54%)	691 (95%)	28 (4%)	5 (1%)	22	62
1	F	724/1329 (54%)	693 (96%)	28 (4%)	3 (0%)	34	72
1	G	459/1329 (34%)	442 (96%)	15 (3%)	2 (0%)	34	72
1	J	724/1329 (54%)	700 (97%)	19 (3%)	5 (1%)	22	62
2	B	117/233 (50%)	114 (97%)	3 (3%)	0	100	100
2	H	117/233 (50%)	112 (96%)	5 (4%)	0	100	100
3	C	109/218 (50%)	104 (95%)	4 (4%)	1 (1%)	17	56
3	I	109/218 (50%)	103 (94%)	5 (5%)	1 (1%)	17	56
All	All	3993/8876 (45%)	3837 (96%)	134 (3%)	22 (1%)	29	65

5 of 22 Ramachandran outliers are listed below:

Mol	Chain	Res	Type
1	G	962	ALA
1	E	384	ASP
1	J	378	ALA
1	D	961	THR
1	D	965	SER

5.3.2 Protein sidechains [i](#)

In the following table, the Percentiles column shows the percent sidechain outliers of the chain as a percentile score with respect to all PDB entries followed by that with respect to all EM entries.

The Analysed column shows the number of residues for which the sidechain conformation was analysed, and the total number of residues.

Mol	Chain	Analysed	Rotameric	Outliers	Percentiles	
1	A	388/1148 (34%)	388 (100%)	0	100	100
1	D	382/1148 (33%)	382 (100%)	0	100	100
1	E	635/1148 (55%)	631 (99%)	4 (1%)	86	92
1	F	635/1148 (55%)	635 (100%)	0	100	100
1	G	388/1148 (34%)	388 (100%)	0	100	100
1	J	635/1148 (55%)	634 (100%)	1 (0%)	93	96
2	B	102/202 (50%)	102 (100%)	0	100	100
2	H	102/202 (50%)	102 (100%)	0	100	100

Continued on next page...

Continued from previous page...

Mol	Chain	Analysed	Rotameric	Outliers	Percentiles	
3	C	93/192 (48%)	93 (100%)	0	100	100
3	I	93/192 (48%)	93 (100%)	0	100	100
All	All	3453/7676 (45%)	3448 (100%)	5 (0%)	93	97

All (5) residues with a non-rotameric sidechain are listed below:

Mol	Chain	Res	Type
1	E	384	ASP
1	E	423	PHE
1	E	602	ASN
1	E	694	ARG
1	J	670	HIS

Sometimes sidechains can be flipped to improve hydrogen bonding and reduce clashes. There are no such sidechains identified.

5.3.3 RNA [i](#)

There are no RNA molecules in this entry.

5.4 Non-standard residues in protein, DNA, RNA chains [i](#)

There are no non-standard protein/DNA/RNA residues in this entry.

5.5 Carbohydrates [i](#)

There are no monosaccharides in this entry.

5.6 Ligand geometry [i](#)

There are no ligands in this entry.

5.7 Other polymers [i](#)

There are no such residues in this entry.

5.8 Polymer linkage issues

There are no chain breaks in this entry.

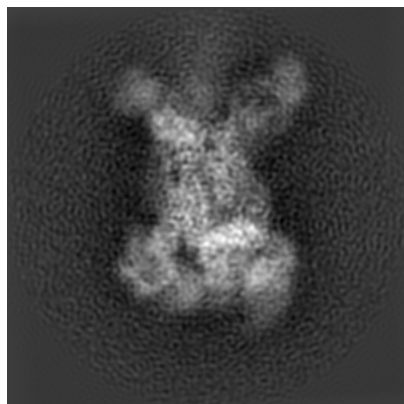
6 Map visualisation [i](#)

This section contains visualisations of the EMDB entry EMD-8788. These allow visual inspection of the internal detail of the map and identification of artifacts.

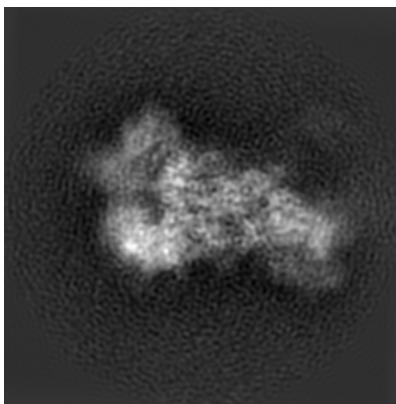
Images derived from a raw map, generated by summing the deposited half-maps, are presented below the corresponding image components of the primary map to allow further visual inspection and comparison with those of the primary map.

6.1 Orthogonal projections [i](#)

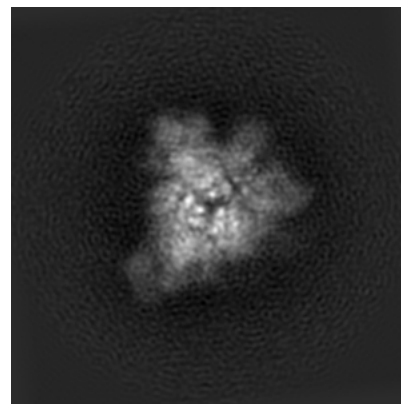
6.1.1 Primary map



X

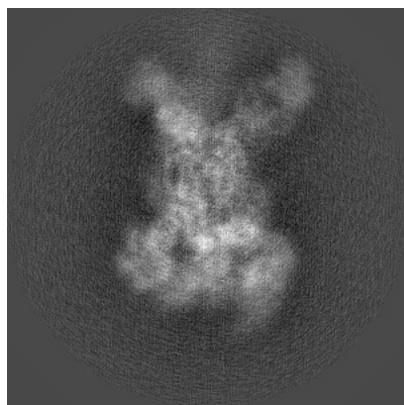


Y

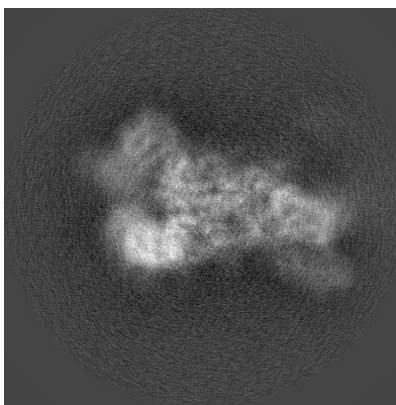


Z

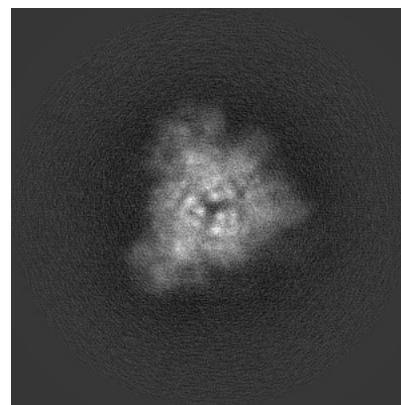
6.1.2 Raw map



X



Y

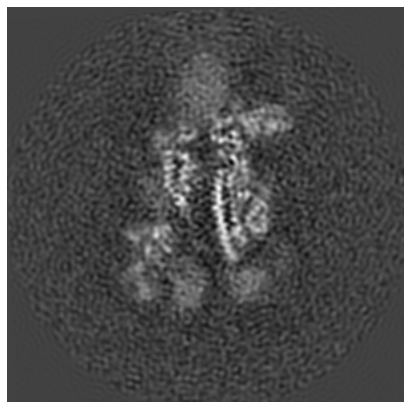


Z

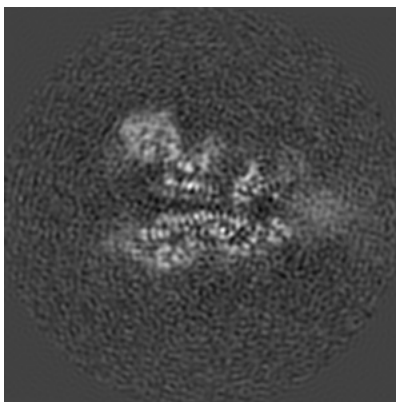
The images above show the map projected in three orthogonal directions.

6.2 Central slices [i](#)

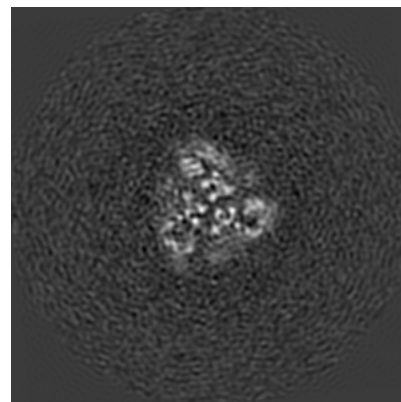
6.2.1 Primary map



X Index: 152

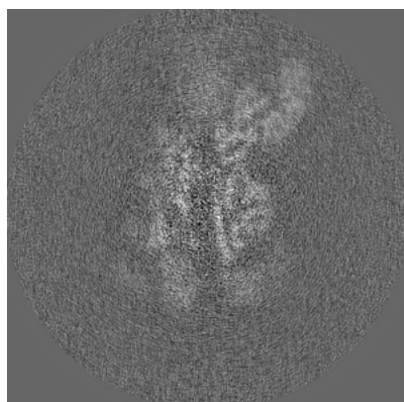


Y Index: 152

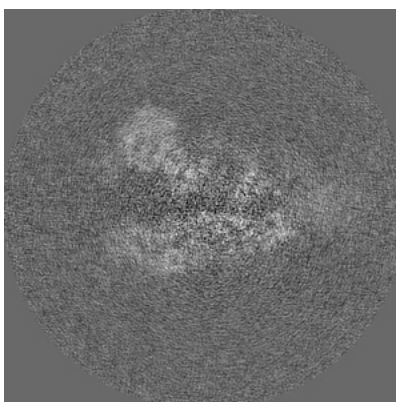


Z Index: 152

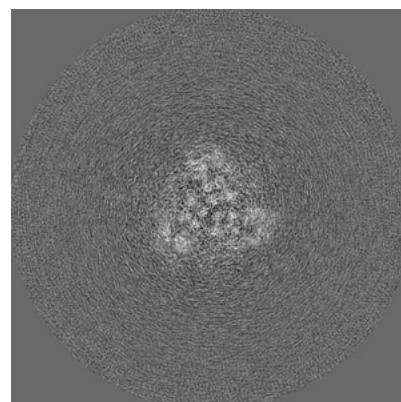
6.2.2 Raw map



X Index: 152



Y Index: 152

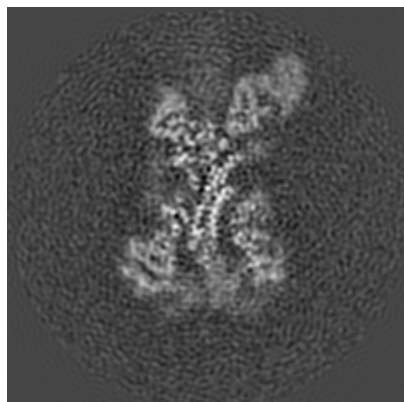


Z Index: 152

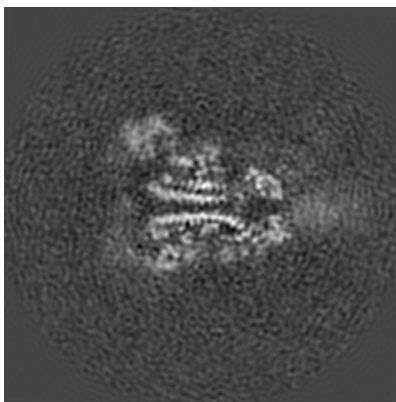
The images above show central slices of the map in three orthogonal directions.

6.3 Largest variance slices [i](#)

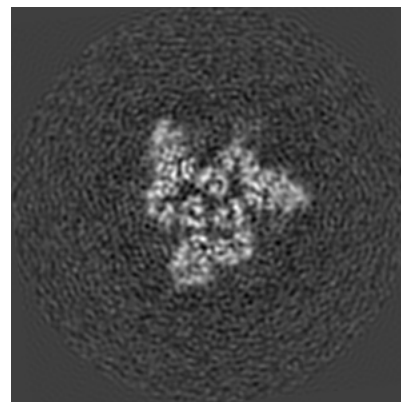
6.3.1 Primary map



X Index: 134

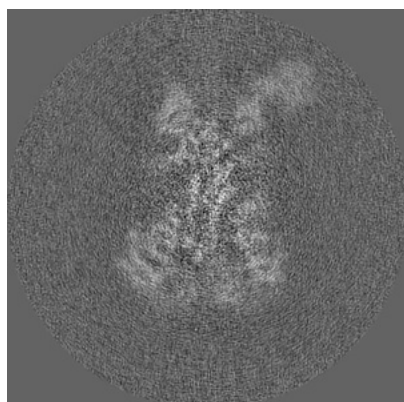


Y Index: 149

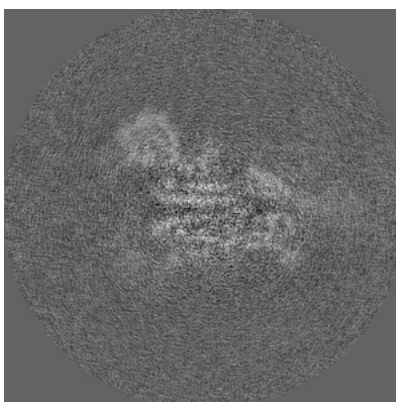


Z Index: 125

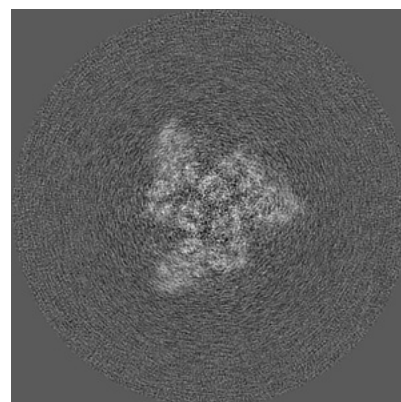
6.3.2 Raw map



X Index: 137



Y Index: 146

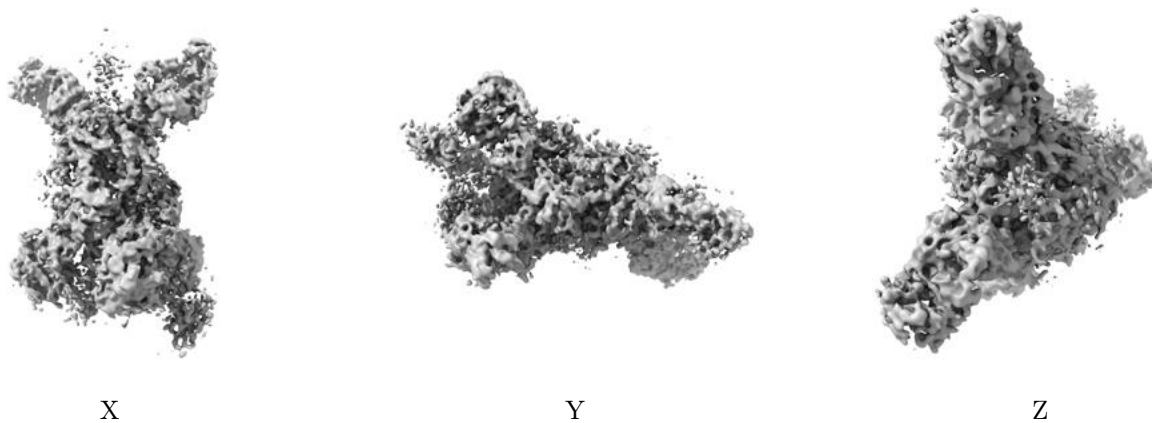


Z Index: 127

The images above show the largest variance slices of the map in three orthogonal directions.

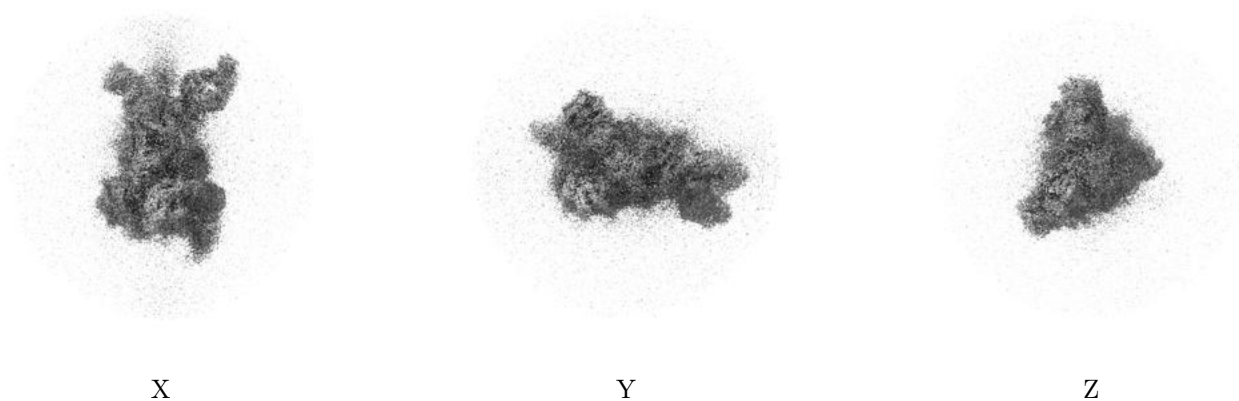
6.4 Orthogonal surface views [i](#)

6.4.1 Primary map



The images above show the 3D surface view of the map at the recommended contour level 0.015. These images, in conjunction with the slice images, may facilitate assessment of whether an appropriate contour level has been provided.

6.4.2 Raw map



These images show the 3D surface of the raw map. The raw map's contour level was selected so that its surface encloses the same volume as the primary map does at its recommended contour level.

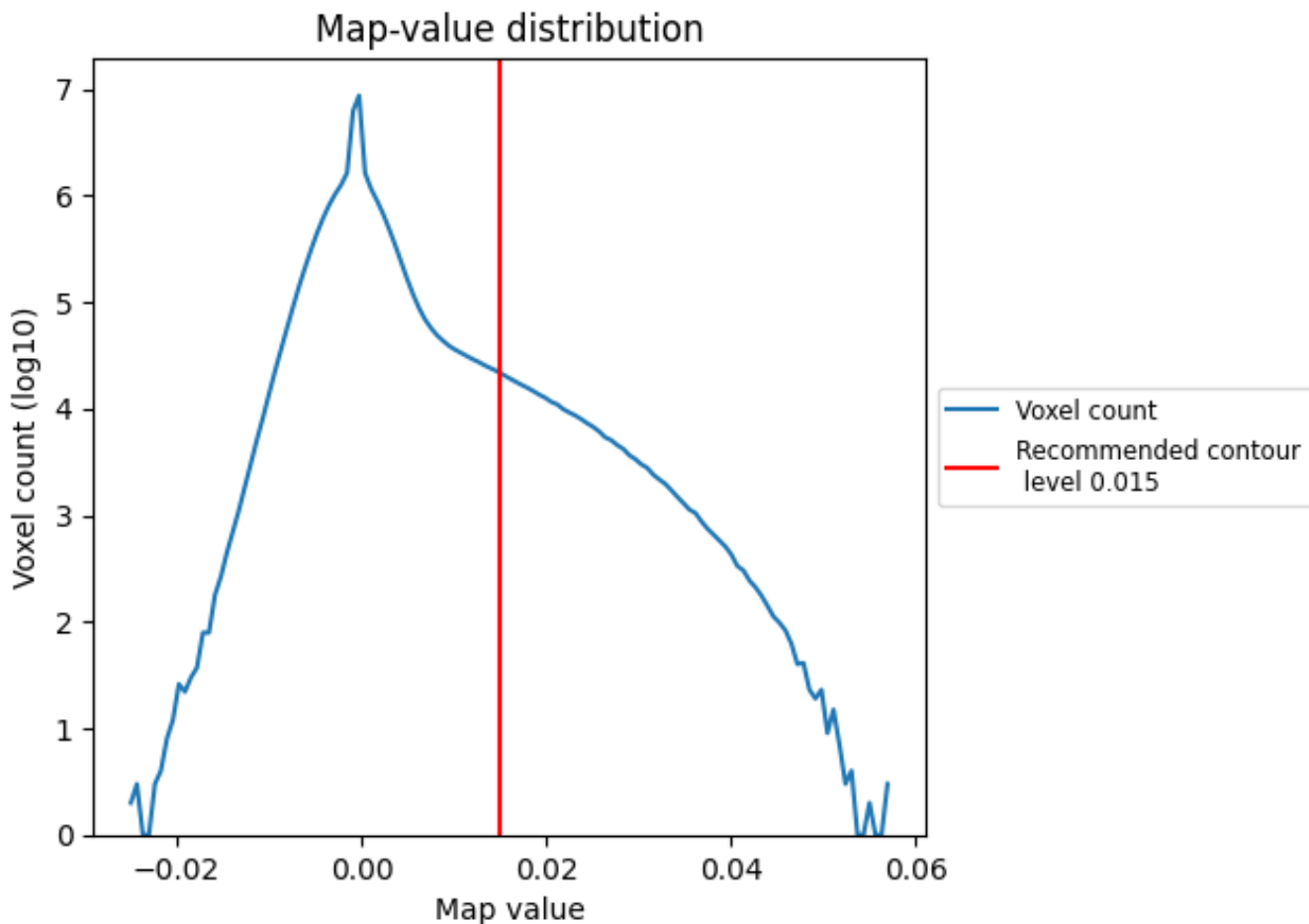
6.5 Mask visualisation [i](#)

This section was not generated. No masks/segmentation were deposited.

7 Map analysis [i](#)

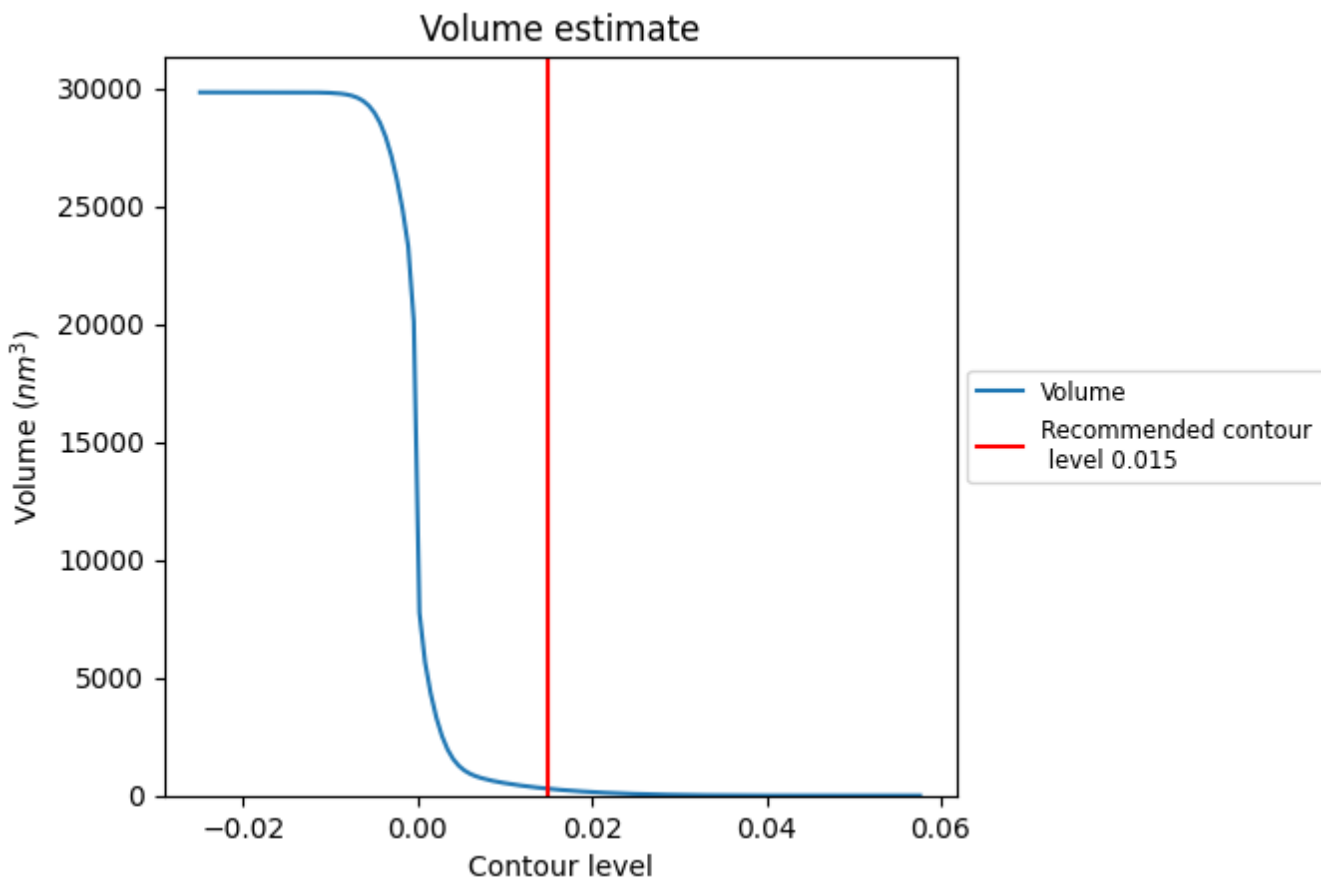
This section contains the results of statistical analysis of the map.

7.1 Map-value distribution [i](#)



The map-value distribution is plotted in 128 intervals along the x-axis. The y-axis is logarithmic. A spike in this graph at zero usually indicates that the volume has been masked.

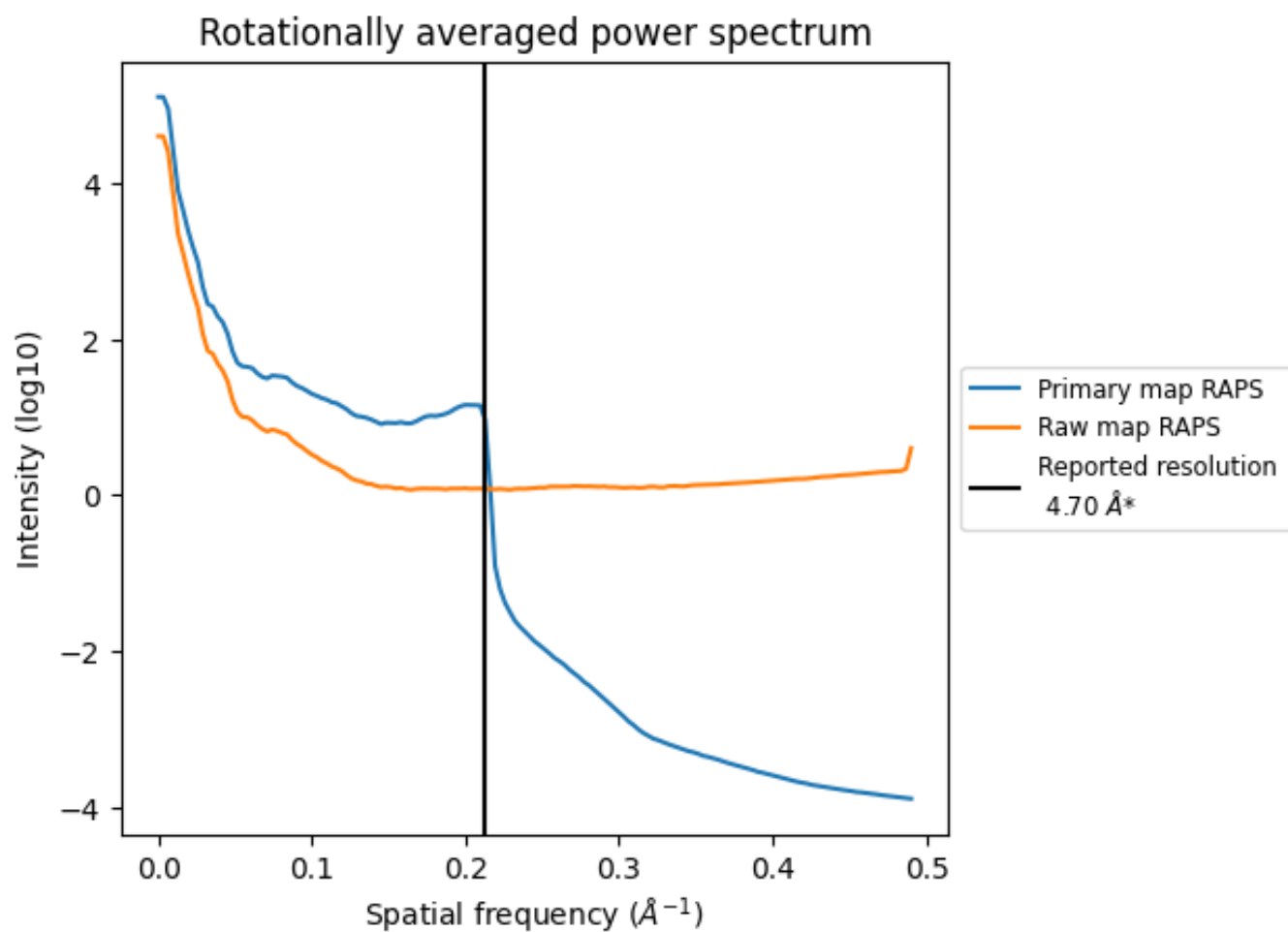
7.2 Volume estimate [\(i\)](#)



The volume at the recommended contour level is 289 nm³; this corresponds to an approximate mass of 261 kDa.

The volume estimate graph shows how the enclosed volume varies with the contour level. The recommended contour level is shown as a vertical line and the intersection between the line and the curve gives the volume of the enclosed surface at the given level.

7.3 Rotationally averaged power spectrum [i](#)

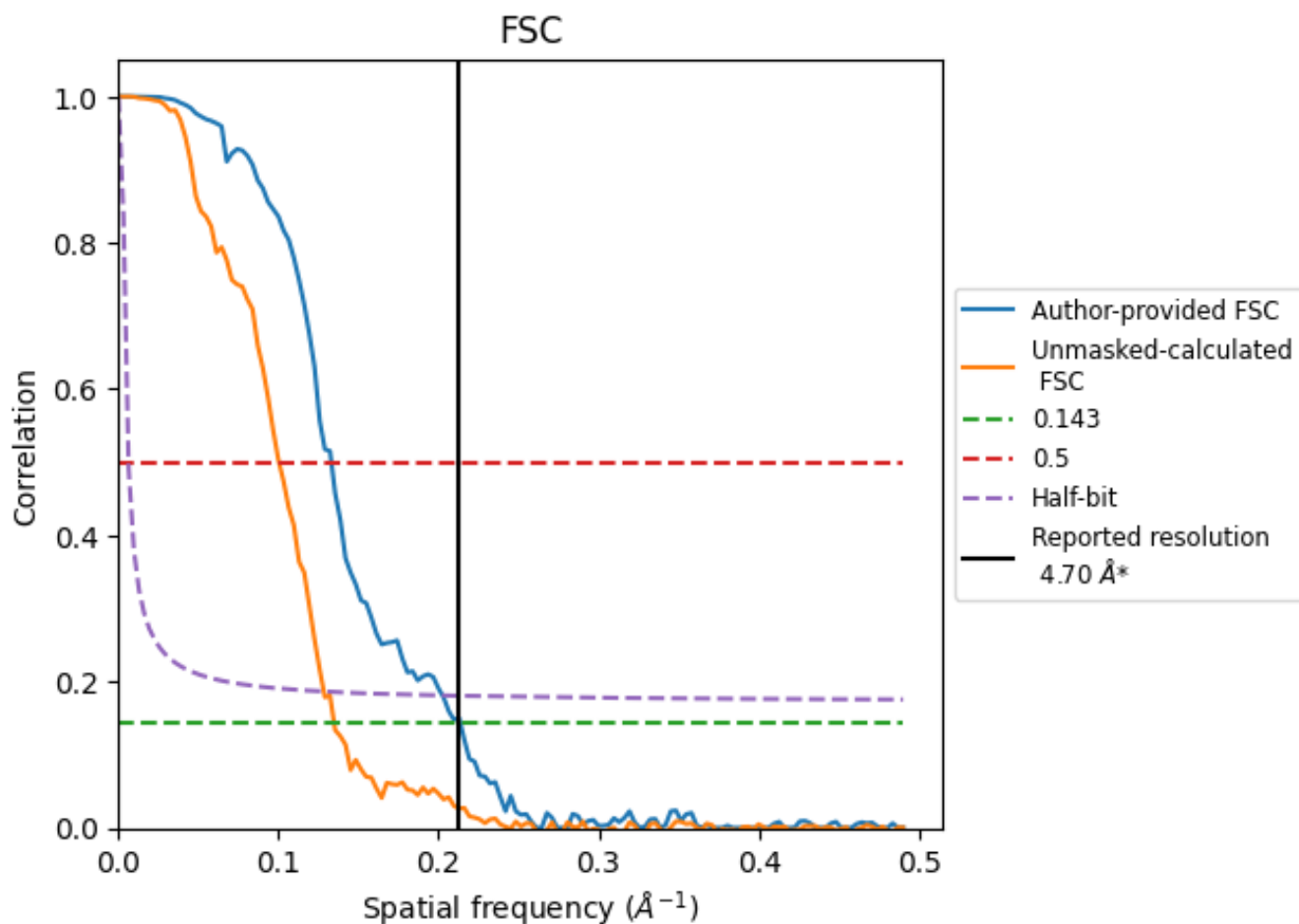


*Reported resolution corresponds to spatial frequency of 0.213 Å⁻¹

8 Fourier-Shell correlation [i](#)

Fourier-Shell Correlation (FSC) is the most commonly used method to estimate the resolution of single-particle and subtomogram-averaged maps. The shape of the curve depends on the imposed symmetry, mask and whether or not the two 3D reconstructions used were processed from a common reference. The reported resolution is shown as a black line. A curve is displayed for the half-bit criterion in addition to lines showing the 0.143 gold standard cut-off and 0.5 cut-off.

8.1 FSC [i](#)



*Reported resolution corresponds to spatial frequency of 0.213 Å⁻¹

8.2 Resolution estimates [i](#)

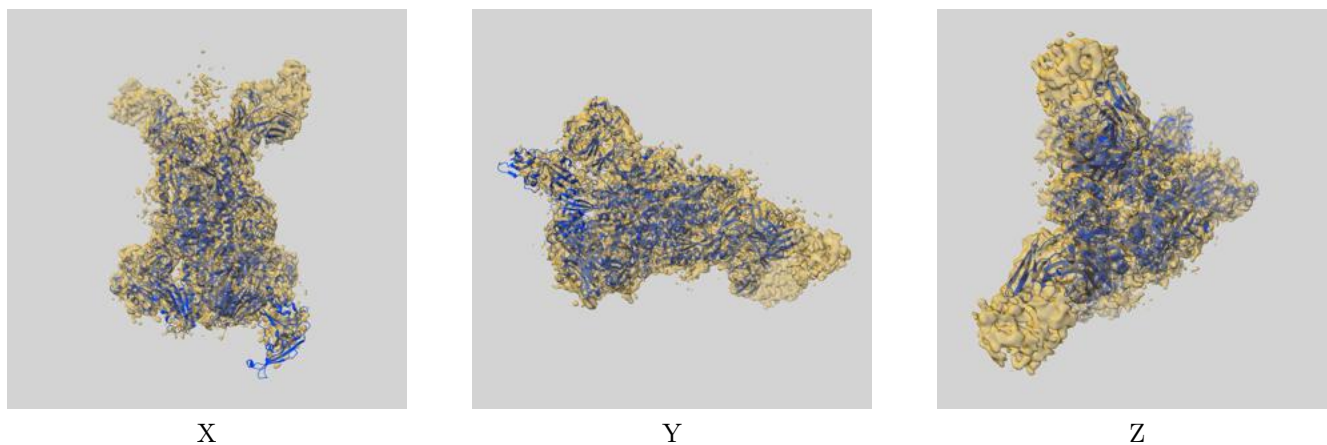
Resolution estimate (Å)	Estimation criterion (FSC cut-off)		
	0.143	0.5	Half-bit
Reported by author	4.70	-	-
Author-provided FSC curve	4.68	7.51	4.94
Unmasked-calculated*	7.42	9.97	7.79

*Resolution estimate based on FSC curve calculated by comparison of deposited half-maps. The value from deposited half-maps intersecting FSC 0.143 CUT-OFF 7.42 differs from the reported value 4.7 by more than 10 %

9 Map-model fit [i](#)

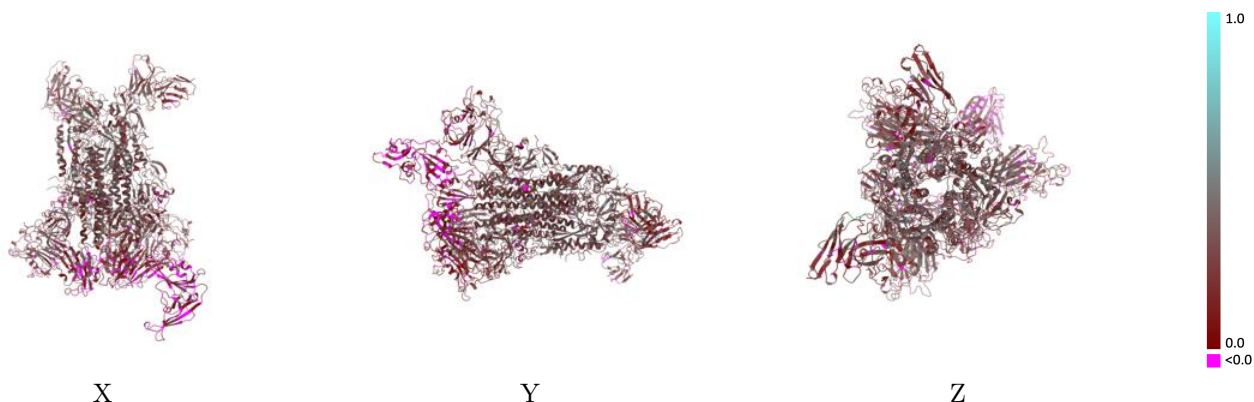
This section contains information regarding the fit between EMDB map EMD-8788 and PDB model 5W9M. Per-residue inclusion information can be found in section 3 on page 12.

9.1 Map-model overlay [i](#)



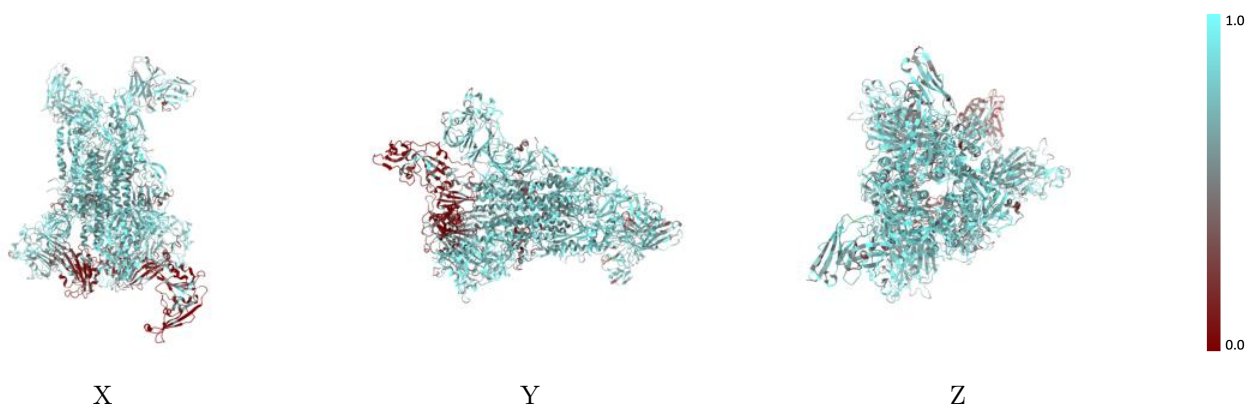
The images above show the 3D surface view of the map at the recommended contour level 0.015 at 50% transparency in yellow overlaid with a ribbon representation of the model coloured in blue. These images allow for the visual assessment of the quality of fit between the atomic model and the map.

9.2 Q-score mapped to coordinate model [i](#)



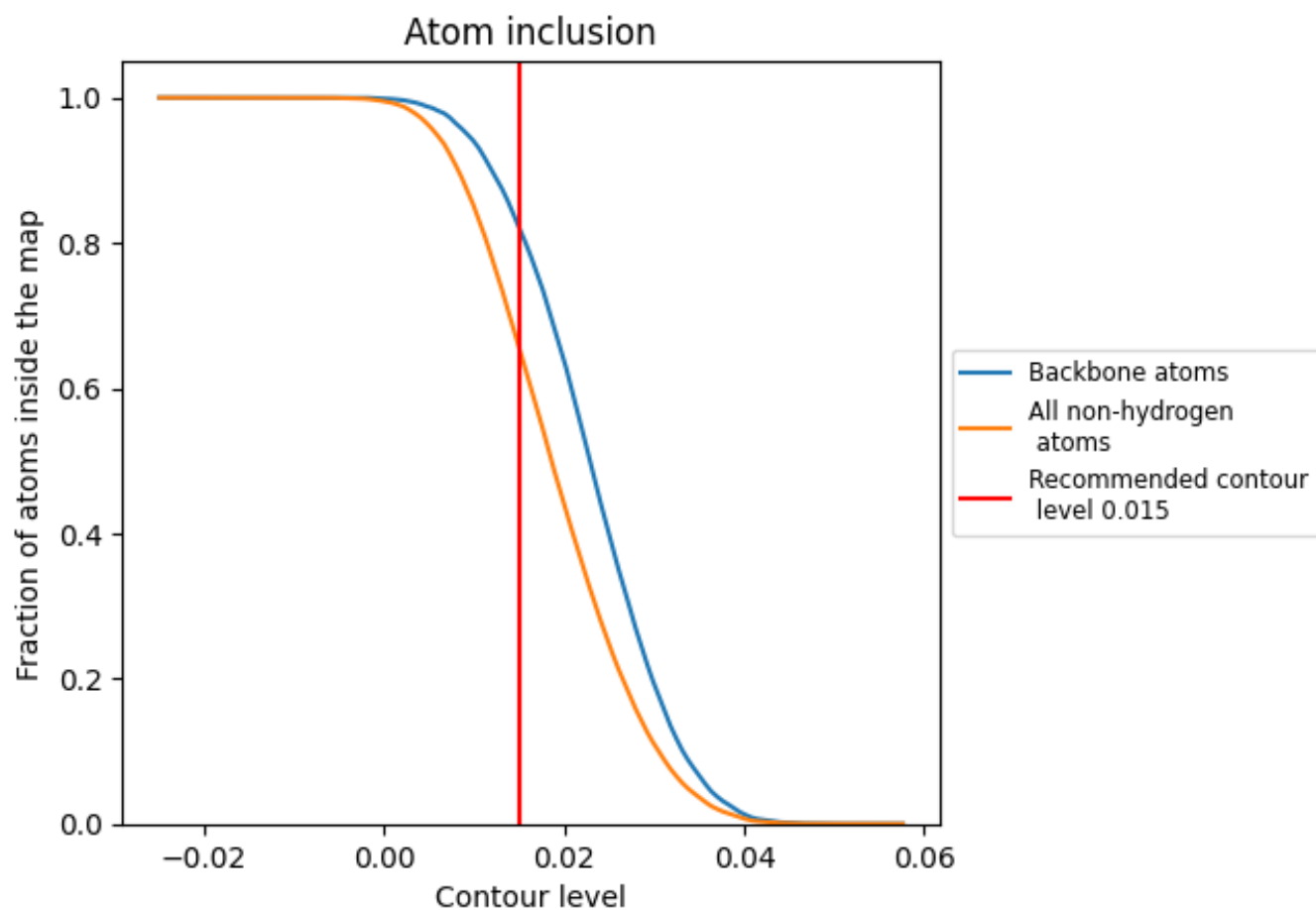
The images above show the model with each residue coloured according to its Q-score. This shows their resolvability in the map with higher Q-score values reflecting better resolvability. Please note: Q-score is calculating the resolvability of atoms, and thus high values are only expected at resolutions at which atoms can be resolved. Low Q-score values may therefore be expected for many entries.

9.3 Atom inclusion mapped to coordinate model [i](#)



The images above show the model with each residue coloured according to its atom inclusion. This shows to what extent they are inside the map at the recommended contour level (0.015).























9.4 Atom inclusion [i](#)



At the recommended contour level, 82% of all backbone atoms, 66% of all non-hydrogen atoms, are inside the map.

9.5 Map-model fit summary [i](#)

The table lists the average atom inclusion at the recommended contour level (0.015) and Q-score for the entire model and for each chain.

Chain	Atom inclusion	Q-score
All	 0.6559	 0.2520
A	 0.7461	 0.3180
B	 0.6919	 0.2630
C	 0.6347	 0.2240
D	 0.7378	 0.3060
E	 0.5983	 0.2090
F	 0.5742	 0.2130
G	 0.7453	 0.3110
H	 0.7405	 0.2870
I	 0.6396	 0.2110
J	 0.6164	 0.2220

