



Full wwPDB X-ray Structure Validation Report ⓘ

Nov 21, 2023 – 05:23 PM JST

PDB ID : 7WAG
Title : Crystal structure of MurJ squeezed form
Authors : Tsukazaki, T.; Kohga, H.; Tanaka, Y.; Yoshikaie, K.; Taniguchi, K.; Fujimoto, K.
Deposited on : 2021-12-14
Resolution : 2.55 Å(reported)

This is a Full wwPDB X-ray Structure Validation Report for a publicly released PDB entry.

We welcome your comments at validation@mail.wwpdb.org

A user guide is available at

<https://www.wwpdb.org/validation/2017/XrayValidationReportHelp>

with specific help available everywhere you see the ⓘ symbol.

The types of validation reports are described at

<http://www.wwpdb.org/validation/2017/FAQs#types>.

The following versions of software and data (see [references ⓘ](#)) were used in the production of this report:

MolProbity : 4.02b-467
Mogul : 1.8.5 (274361), CSD as541be (2020)
Xtriage (Phenix) : 1.13
EDS : 2.36
buster-report : 1.1.7 (2018)
Percentile statistics : 20191225.v01 (using entries in the PDB archive December 25th 2019)
Refmac : 5.8.0158
CCP4 : 7.0.044 (Gargrove)
Ideal geometry (proteins) : Engh & Huber (2001)
Ideal geometry (DNA, RNA) : Parkinson et al. (1996)
Validation Pipeline (wwPDB-VP) : 2.36

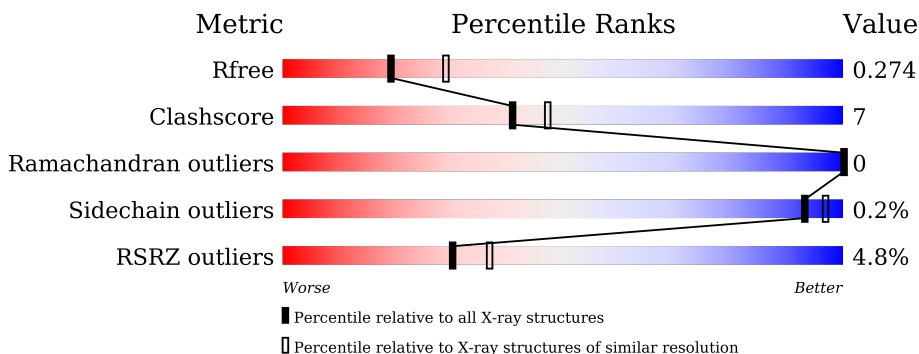
1 Overall quality at a glance

The following experimental techniques were used to determine the structure:

X-RAY DIFFRACTION

The reported resolution of this entry is 2.55 Å.

Percentile scores (ranging between 0-100) for global validation metrics of the entry are shown in the following graphic. The table shows the number of entries on which the scores are based.



Metric	Whole archive (#Entries)	Similar resolution (#Entries, resolution range(Å))
R_{free}	130704	1284 (2.56-2.52)
Clashscore	141614	1332 (2.56-2.52)
Ramachandran outliers	138981	1315 (2.56-2.52)
Sidechain outliers	138945	1315 (2.56-2.52)
RSRZ outliers	127900	1272 (2.56-2.52)

The table below summarises the geometric issues observed across the polymeric chains and their fit to the electron density. The red, orange, yellow and green segments of the lower bar indicate the fraction of residues that contain outliers for ≥ 3 , 2, 1 and 0 types of geometric quality criteria respectively. A grey segment represents the fraction of residues that are not modelled. The numeric value for each fraction is indicated below the corresponding segment, with a dot representing fractions $\leq 5\%$. The upper red bar (where present) indicates the fraction of residues that have poor fit to the electron density. The numeric value is given above the bar.

Mol	Chain	Length	Quality of chain
1	A	522	

2 Entry composition

There are 4 unique types of molecules in this entry. The entry contains 4273 atoms, of which 0 are hydrogens and 0 are deuteriums.

In the tables below, the ZeroOcc column contains the number of atoms modelled with zero occupancy, the AltConf column contains the number of residues with at least one atom in alternate conformation and the Trace column contains the number of residues modelled with at most 2 atoms.

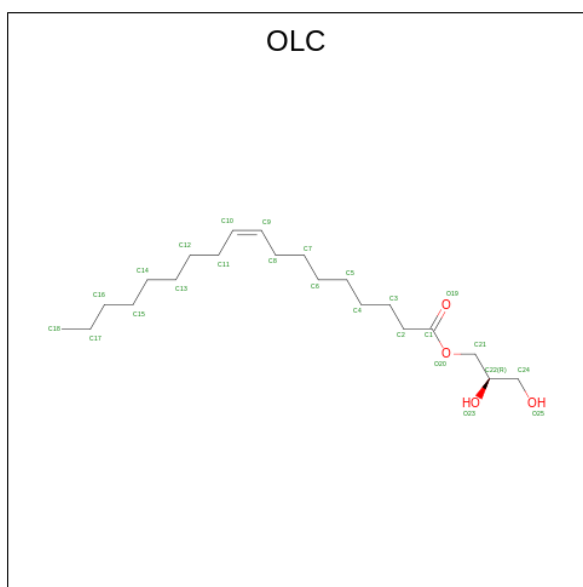
- Molecule 1 is a protein called Lipid II flippase MurJ.

Mol	Chain	Residues	Atoms					ZeroOcc	AltConf	Trace
			Total	C	N	O	S			
1	A	522	3987	2650	651	663	23	0	0	0

There are 14 discrepancies between the modelled and reference sequences:

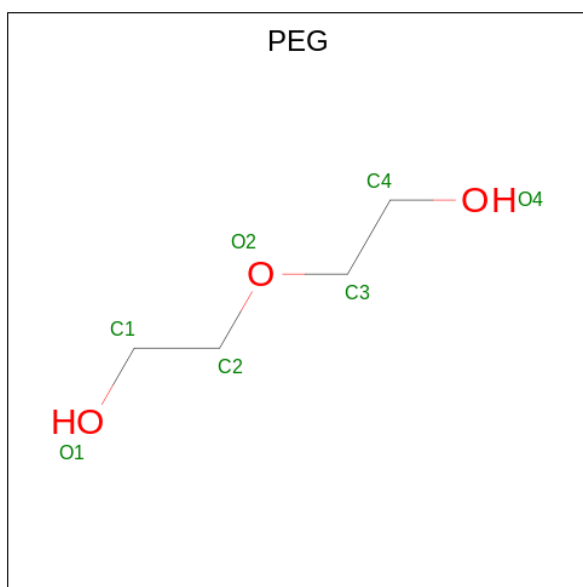
Chain	Residue	Modelled	Actual	Comment	Reference
A	9	GLY	-	insertion	UNP P0AF16
A	10	ARG	VAL	engineered mutation	UNP P0AF16
A	11	CYS	SER	engineered mutation	UNP P0AF16
A	512	LEU	-	expression tag	UNP P0AF16
A	513	GLU	-	expression tag	UNP P0AF16
A	514	SER	-	expression tag	UNP P0AF16
A	515	SER	-	expression tag	UNP P0AF16
A	516	GLY	-	expression tag	UNP P0AF16
A	517	GLU	-	expression tag	UNP P0AF16
A	518	ASN	-	expression tag	UNP P0AF16
A	519	LEU	-	expression tag	UNP P0AF16
A	520	TYR	-	expression tag	UNP P0AF16
A	521	PHE	-	expression tag	UNP P0AF16
A	522	GLN	-	expression tag	UNP P0AF16

- Molecule 2 is (2R)-2,3-dihydroxypropyl (9Z)-octadec-9-enoate (three-letter code: OLC) (formula: C₂₁H₄₀O₄) (labeled as "Ligand of Interest" by depositor).



Mol	Chain	Residues	Atoms	ZeroOcc	AltConf
2	A	1	Total C O 25 21 4	0	0
2	A	1	Total C O 25 21 4	0	0
2	A	1	Total C 11 11	0	0
2	A	1	Total C 8 8	0	0
2	A	1	Total C 13 13	0	0
2	A	1	Total C 17 17	0	0
2	A	1	Total C 13 13	0	0
2	A	1	Total C O 17 13 4	0	0
2	A	1	Total C 11 11	0	0
2	A	1	Total C O 25 21 4	0	0
2	A	1	Total C O 19 15 4	0	0
2	A	1	Total C 10 10	0	0
2	A	1	Total C O 25 21 4	0	0

- Molecule 3 is DI(HYDROXYETHYL)ETHER (three-letter code: PEG) (formula: C₄H₁₀O₃).



Mol	Chain	Residues	Atoms	ZeroOcc	AltConf
3	A	1	Total C O 7 4 3	0	0

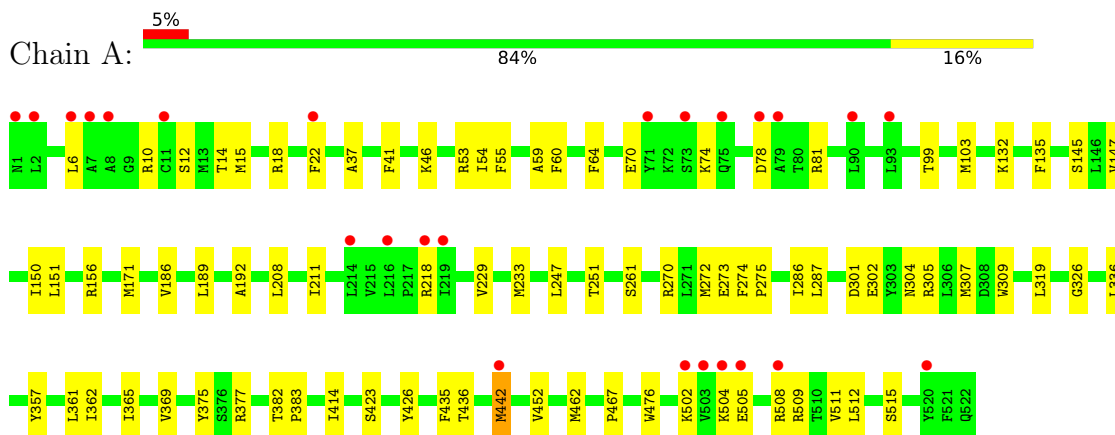
- Molecule 4 is water.

Mol	Chain	Residues	Atoms	ZeroOcc	AltConf
4	A	60	Total O 60 60	0	0

3 Residue-property plots [i](#)

These plots are drawn for all protein, RNA, DNA and oligosaccharide chains in the entry. The first graphic for a chain summarises the proportions of the various outlier classes displayed in the second graphic. The second graphic shows the sequence view annotated by issues in geometry and electron density. Residues are color-coded according to the number of geometric quality criteria for which they contain at least one outlier: green = 0, yellow = 1, orange = 2 and red = 3 or more. A red dot above a residue indicates a poor fit to the electron density ($RSRZ > 2$). Stretches of 2 or more consecutive residues without any outlier are shown as a green connector. Residues present in the sample, but not in the model, are shown in grey.

- Molecule 1: Lipid II flippase MurJ



4 Data and refinement statistics i

Property	Value	Source
Space group	P 21 21 21	Depositor
Cell constants a, b, c, α , β , γ	74.45Å 75.06Å 115.21Å 90.00° 90.00° 90.00°	Depositor
Resolution (Å)	45.70 – 2.55 45.70 – 2.55	Depositor EDS
% Data completeness (in resolution range)	100.0 (45.70-2.55) 99.9 (45.70-2.55)	Depositor EDS
R_{merge}	(Not available)	Depositor
R_{sym}	(Not available)	Depositor
$\langle I/\sigma(I) \rangle$ ¹	1.23 (at 2.54Å)	Xtrriage
Refinement program	PHENIX (1.18.2_3874: ???)	Depositor
R, R_{free}	0.214 , 0.268 0.223 , 0.274	Depositor DCC
R_{free} test set	2004 reflections (9.24%)	wwPDB-VP
Wilson B-factor (Å ²)	43.3	Xtrriage
Anisotropy	0.395	Xtrriage
Bulk solvent k_{sol} (e/Å ³), B_{sol} (Å ²)	0.32 , 58.3	EDS
L-test for twinning ²	$\langle L \rangle = 0.50$, $\langle L^2 \rangle = 0.33$	Xtrriage
Estimated twinning fraction	0.019 for k,h,-l	Xtrriage
F_o, F_c correlation	0.92	EDS
Total number of atoms	4273	wwPDB-VP
Average B, all atoms (Å ²)	45.0	wwPDB-VP

Xtrriage's analysis on translational NCS is as follows: *The largest off-origin peak in the Patterson function is 4.40% of the height of the origin peak. No significant pseudotranslation is detected.*

¹Intensities estimated from amplitudes.

²Theoretical values of $\langle |L| \rangle$, $\langle L^2 \rangle$ for acentric reflections are 0.5, 0.333 respectively for untwinned datasets, and 0.375, 0.2 for perfectly twinned datasets.

5 Model quality [i](#)

5.1 Standard geometry [i](#)

Bond lengths and bond angles in the following residue types are not validated in this section: PEG, OLC

The Z score for a bond length (or angle) is the number of standard deviations the observed value is removed from the expected value. A bond length (or angle) with $|Z| > 5$ is considered an outlier worth inspection. RMSZ is the root-mean-square of all Z scores of the bond lengths (or angles).

Mol	Chain	Bond lengths		Bond angles	
		RMSZ	# Z >5	RMSZ	# Z >5
1	A	0.29	0/4082	0.50	1/5553 (0.0%)

There are no bond length outliers.

All (1) bond angle outliers are listed below:

Mol	Chain	Res	Type	Atoms	Z	Observed($^{\circ}$)	Ideal($^{\circ}$)
1	A	218	ARG	NE-CZ-NH2	-7.95	116.32	120.30

There are no chirality outliers.

There are no planarity outliers.

5.2 Too-close contacts [i](#)

In the following table, the Non-H and H(model) columns list the number of non-hydrogen atoms and hydrogen atoms in the chain respectively. The H(added) column lists the number of hydrogen atoms added and optimized by MolProbity. The Clashes column lists the number of clashes within the asymmetric unit, whereas Symm-Clashes lists symmetry-related clashes.

Mol	Chain	Non-H	H(model)	H(added)	Clashes	Symm-Clashes
1	A	3987	0	4213	60	0
2	A	219	0	339	16	0
3	A	7	0	10	0	0
4	A	60	0	0	3	0
All	All	4273	0	4562	62	0

The all-atom clashscore is defined as the number of clashes found per 1000 atoms (including hydrogen atoms). The all-atom clashscore for this structure is 7.

All (62) close contacts within the same asymmetric unit are listed below, sorted by their clash

magnitude.

Atom-1	Atom-2	Interatomic distance (Å)	Clash overlap (Å)
2:A:601:OLC:H3A	2:A:612:OLC:H3	1.60	0.83
1:A:247:LEU:HD22	1:A:414:ILE:HD13	1.72	0.72
1:A:151:LEU:HD22	1:A:156:ARG:HD3	1.72	0.71
1:A:319:LEU:HG	1:A:452:VAL:HG21	1.72	0.71
1:A:426:TYR:HD2	2:A:613:OLC:H6	1.59	0.68
1:A:505:GLU:OE2	1:A:509:ARG:NE	2.28	0.66
1:A:423:SER:HA	2:A:614:OLC:H10	1.84	0.59
1:A:208:LEU:HD12	1:A:211:ILE:HD11	1.85	0.58
2:A:609:OLC:H2A	2:A:614:OLC:H2	1.86	0.57
1:A:509:ARG:HB2	1:A:512:LEU:HD23	1.86	0.57
1:A:37:ALA:HB1	1:A:186:VAL:HG11	1.86	0.57
1:A:307:MET:HG2	1:A:435:PHE:CD1	2.40	0.56
1:A:476:TRP:HE3	2:A:612:OLC:H4A	1.71	0.56
1:A:442:MET:SD	1:A:442:MET:N	2.76	0.55
1:A:54:ILE:HG23	1:A:59:ALA:HB3	1.87	0.54
1:A:132:LYS:HD3	2:A:606:OLC:H15A	1.88	0.54
1:A:53:ARG:CZ	1:A:273:GLU:HG3	2.38	0.53
1:A:99:THR:HG23	1:A:135:PHE:HB3	1.90	0.53
1:A:229:VAL:O	1:A:233:MET:HG3	2.09	0.53
1:A:511:VAL:HG13	1:A:512:LEU:HD22	1.91	0.52
1:A:78:ASP:OD1	1:A:81:ARG:NH2	2.43	0.51
1:A:426:TYR:HE2	2:A:609:OLC:H21	1.76	0.50
1:A:502:LYS:HB3	1:A:505:GLU:HB3	1.93	0.50
1:A:467:PRO:HG3	2:A:601:OLC:H3	1.93	0.50
1:A:274:PHE:HB3	1:A:275:PRO:HD3	1.94	0.49
1:A:103:MET:HE2	2:A:606:OLC:H13A	1.93	0.49
1:A:55:PHE:CD2	1:A:145:SER:HA	2.48	0.48
1:A:476:TRP:CE3	2:A:612:OLC:H4A	2.48	0.48
1:A:14:THR:O	1:A:18:ARG:HG2	2.13	0.48
1:A:326:GLY:HA3	2:A:610:OLC:C9	2.44	0.48
1:A:261:SER:N	4:A:714:HOH:O	2.48	0.47
1:A:272:MET:SD	1:A:357:TYR:HB3	2.55	0.47
1:A:302:GLU:OE2	1:A:515:SER:HA	2.14	0.47
1:A:55:PHE:CE2	1:A:145:SER:HA	2.50	0.47
1:A:375:TYR:HE1	1:A:383:PRO:HG2	1.80	0.46
1:A:6:LEU:HD11	1:A:286:ILE:HD11	1.97	0.46
1:A:147:VAL:HA	1:A:150:ILE:HD12	1.97	0.45
1:A:301:ASP:HB3	1:A:305:ARG:NH1	2.31	0.45
1:A:10:ARG:O	1:A:14:THR:HG23	2.17	0.45
1:A:504:LYS:HD2	1:A:508:ARG:HD2	1.97	0.45
1:A:12:SER:HA	1:A:15:MET:HE3	1.99	0.44

Continued on next page...

Continued from previous page...

Atom-1	Atom-2	Interatomic distance (Å)	Clash overlap (Å)
1:A:362:ILE:HG21	2:A:614:OLC:H15A	2.00	0.44
1:A:60:PHE:CE2	1:A:64:PHE:HB2	2.53	0.44
1:A:377:ARG:NH1	4:A:707:HOH:O	2.38	0.44
1:A:362:ILE:HG22	4:A:724:HOH:O	2.18	0.43
1:A:132:LYS:HE3	1:A:132:LYS:HB2	1.82	0.43
1:A:462:MET:SD	2:A:601:OLC:H15	2.58	0.43
1:A:46:LYS:HE2	1:A:251:THR:OG1	2.17	0.43
1:A:426:TYR:CD2	2:A:613:OLC:H6	2.47	0.43
1:A:171:MET:HA	1:A:192:ALA:HB1	2.00	0.43
1:A:287:LEU:HD21	1:A:369:VAL:HG13	2.00	0.43
1:A:361:LEU:O	1:A:365:ILE:HG12	2.19	0.43
1:A:41:PHE:CE1	1:A:189:LEU:HB3	2.54	0.42
1:A:382:THR:OG1	2:A:611:OLC:H5	2.19	0.42
1:A:272:MET:O	1:A:275:PRO:HD2	2.20	0.41
1:A:309:TRP:CE2	1:A:512:LEU:HD21	2.55	0.41
1:A:467:PRO:HD3	2:A:601:OLC:H5A	2.02	0.41
1:A:509:ARG:HA	1:A:509:ARG:HD3	1.89	0.41
1:A:70:GLU:O	1:A:74:LYS:HG2	2.21	0.41
1:A:22:PHE:HE1	1:A:336:LEU:HB3	1.85	0.41
1:A:270:ARG:NH1	1:A:273:GLU:OE1	2.50	0.41
1:A:304:ASN:ND2	1:A:436:THR:O	2.53	0.41

There are no symmetry-related clashes.

5.3 Torsion angles [i](#)

5.3.1 Protein backbone [i](#)

In the following table, the Percentiles column shows the percent Ramachandran outliers of the chain as a percentile score with respect to all X-ray entries followed by that with respect to entries of similar resolution.

The Analysed column shows the number of residues for which the backbone conformation was analysed, and the total number of residues.

Mol	Chain	Analysed	Favoured	Allowed	Outliers	Percentiles
1	A	520/522 (100%)	509 (98%)	11 (2%)	0	100 100

There are no Ramachandran outliers to report.

5.3.2 Protein sidechains [i](#)

In the following table, the Percentiles column shows the percent sidechain outliers of the chain as a percentile score with respect to all X-ray entries followed by that with respect to entries of similar resolution.

The Analysed column shows the number of residues for which the sidechain conformation was analysed, and the total number of residues.

Mol	Chain	Analysed	Rotameric	Outliers	Percentiles
1	A	418/418 (100%)	417 (100%)	1 (0%)	93 97

All (1) residues with a non-rotameric sidechain are listed below:

Mol	Chain	Res	Type
1	A	442	MET

Sometimes sidechains can be flipped to improve hydrogen bonding and reduce clashes. There are no such sidechains identified.

5.3.3 RNA [i](#)

There are no RNA molecules in this entry.

5.4 Non-standard residues in protein, DNA, RNA chains [i](#)

There are no non-standard protein/DNA/RNA residues in this entry.

5.5 Carbohydrates [i](#)

There are no monosaccharides in this entry.

5.6 Ligand geometry [i](#)

14 ligands are modelled in this entry.

In the following table, the Counts columns list the number of bonds (or angles) for which Mogul statistics could be retrieved, the number of bonds (or angles) that are observed in the model and the number of bonds (or angles) that are defined in the Chemical Component Dictionary. The Link column lists molecule types, if any, to which the group is linked. The Z score for a bond length (or angle) is the number of standard deviations the observed value is removed from the expected value. A bond length (or angle) with $|Z| > 2$ is considered an outlier worth inspection. RMSZ is the root-mean-square of all Z scores of the bond lengths (or angles).

Mol	Type	Chain	Res	Link	Bond lengths			Bond angles		
					Counts	RMSZ	# Z > 2	Counts	RMSZ	# Z > 2
2	OLC	A	614	-	24,24,24	0.26	0	25,25,25	0.24	0
2	OLC	A	607	-	16,16,24	0.20	0	15,15,25	0.24	0
2	OLC	A	612	-	18,18,24	0.25	0	18,19,25	0.25	0
2	OLC	A	613	-	9,9,24	0.23	0	8,8,25	0.26	0
2	OLC	A	602	-	24,24,24	0.24	0	25,25,25	0.26	0
2	OLC	A	605	-	7,7,24	0.09	0	6,6,25	0.08	0
3	PEG	A	603	-	6,6,6	0.12	0	5,5,5	0.11	0
2	OLC	A	608	-	12,12,24	0.25	0	11,11,25	0.22	0
2	OLC	A	610	-	10,10,24	0.22	0	9,9,25	0.34	0
2	OLC	A	606	-	12,12,24	0.22	0	11,11,25	0.17	0
2	OLC	A	604	-	10,10,24	0.24	0	9,9,25	0.27	0
2	OLC	A	611	-	24,24,24	0.24	0	25,25,25	0.27	0
2	OLC	A	609	-	16,16,24	0.27	0	17,17,25	0.32	0
2	OLC	A	601	-	24,24,24	0.26	0	25,25,25	0.23	0

In the following table, the Chirals column lists the number of chiral outliers, the number of chiral centers analysed, the number of these observed in the model and the number defined in the Chemical Component Dictionary. Similar counts are reported in the Torsion and Rings columns. '-' means no outliers of that kind were identified.

Mol	Type	Chain	Res	Link	Chirals	Torsions	Rings
2	OLC	A	614	-	-	3/24/24/24	-
2	OLC	A	607	-	-	6/14/14/24	-
2	OLC	A	612	-	-	3/18/18/24	-
2	OLC	A	613	-	-	1/7/7/24	-
2	OLC	A	602	-	-	9/24/24/24	-
2	OLC	A	605	-	-	0/5/5/24	-
3	PEG	A	603	-	-	2/4/4/4	-
2	OLC	A	608	-	-	3/10/10/24	-
2	OLC	A	610	-	-	2/8/8/24	-
2	OLC	A	606	-	-	4/10/10/24	-
2	OLC	A	604	-	-	1/8/8/24	-
2	OLC	A	611	-	-	6/24/24/24	-
2	OLC	A	609	-	-	9/16/16/24	-
2	OLC	A	601	-	-	5/24/24/24	-

There are no bond length outliers.

There are no bond angle outliers.

There are no chirality outliers.

All (54) torsion outliers are listed below:

Mol	Chain	Res	Type	Atoms
2	A	602	OLC	O20-C21-C22-O23
2	A	609	OLC	C21-C22-C24-O25
2	A	609	OLC	O20-C21-C22-C24
2	A	609	OLC	O20-C21-C22-O23
2	A	601	OLC	C4-C5-C6-C7
2	A	609	OLC	O23-C22-C24-O25
2	A	602	OLC	C1-C2-C3-C4
2	A	608	OLC	C11-C10-C9-C8
2	A	610	OLC	C5-C6-C7-C8
2	A	602	OLC	O20-C21-C22-C24
2	A	607	OLC	C13-C14-C15-C16
2	A	608	OLC	C6-C7-C8-C9
2	A	609	OLC	C3-C4-C5-C6
2	A	612	OLC	C1-C2-C3-C4
2	A	607	OLC	C12-C13-C14-C15
2	A	602	OLC	C3-C4-C5-C6
2	A	612	OLC	C6-C7-C8-C9
2	A	602	OLC	C4-C5-C6-C7
2	A	609	OLC	C2-C1-O20-C21
2	A	611	OLC	C3-C4-C5-C6
2	A	608	OLC	C7-C8-C9-C10
3	A	603	PEG	C1-C2-O2-C3
2	A	609	OLC	O19-C1-O20-C21
2	A	614	OLC	C5-C6-C7-C8
2	A	611	OLC	O20-C21-C22-C24
2	A	607	OLC	C4-C5-C6-C7
2	A	609	OLC	C1-C2-C3-C4
2	A	606	OLC	C7-C8-C9-C10
2	A	606	OLC	C6-C7-C8-C9
2	A	609	OLC	C4-C5-C6-C7
2	A	611	OLC	O19-C1-O20-C21
2	A	606	OLC	C12-C13-C14-C15
2	A	610	OLC	C9-C10-C11-C12
2	A	611	OLC	C2-C1-O20-C21
2	A	611	OLC	C5-C6-C7-C8
2	A	602	OLC	C9-C10-C11-C12
2	A	602	OLC	C13-C14-C15-C16
2	A	604	OLC	C9-C10-C11-C12
2	A	607	OLC	C7-C8-C9-C10
2	A	606	OLC	C11-C12-C13-C14
2	A	601	OLC	C1-C2-C3-C4
2	A	601	OLC	C2-C1-O20-C21

Continued on next page...

Continued from previous page...

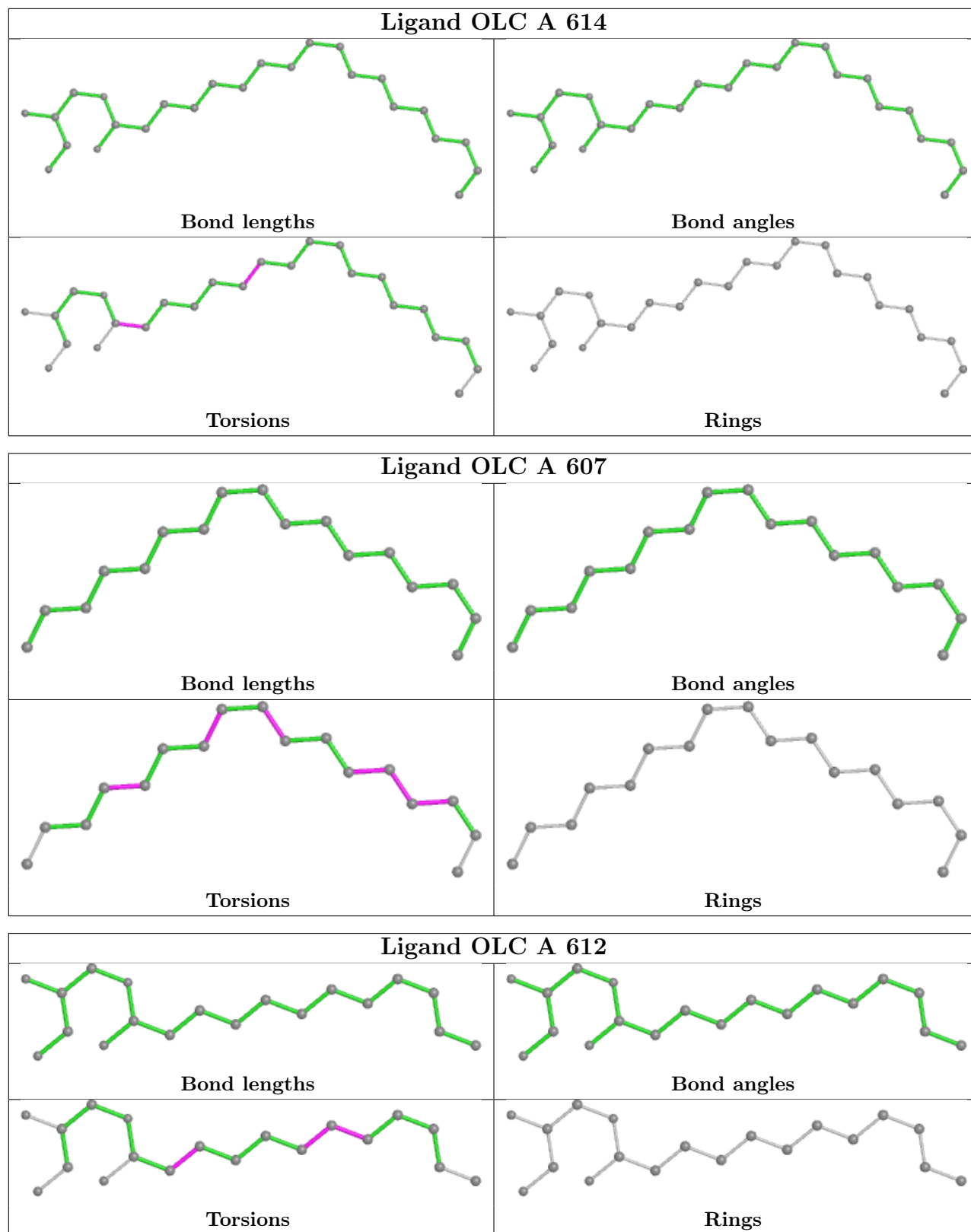
Mol	Chain	Res	Type	Atoms
2	A	601	OLC	O19-C1-O20-C21
2	A	607	OLC	C14-C15-C16-C17
3	A	603	PEG	C4-C3-O2-C2
2	A	613	OLC	C5-C6-C7-C8
2	A	614	OLC	O20-C1-C2-C3
2	A	601	OLC	C7-C8-C9-C10
2	A	607	OLC	C9-C10-C11-C12
2	A	614	OLC	O19-C1-C2-C3
2	A	612	OLC	C5-C6-C7-C8
2	A	602	OLC	C2-C3-C4-C5
2	A	602	OLC	O20-C1-C2-C3
2	A	611	OLC	O20-C1-C2-C3

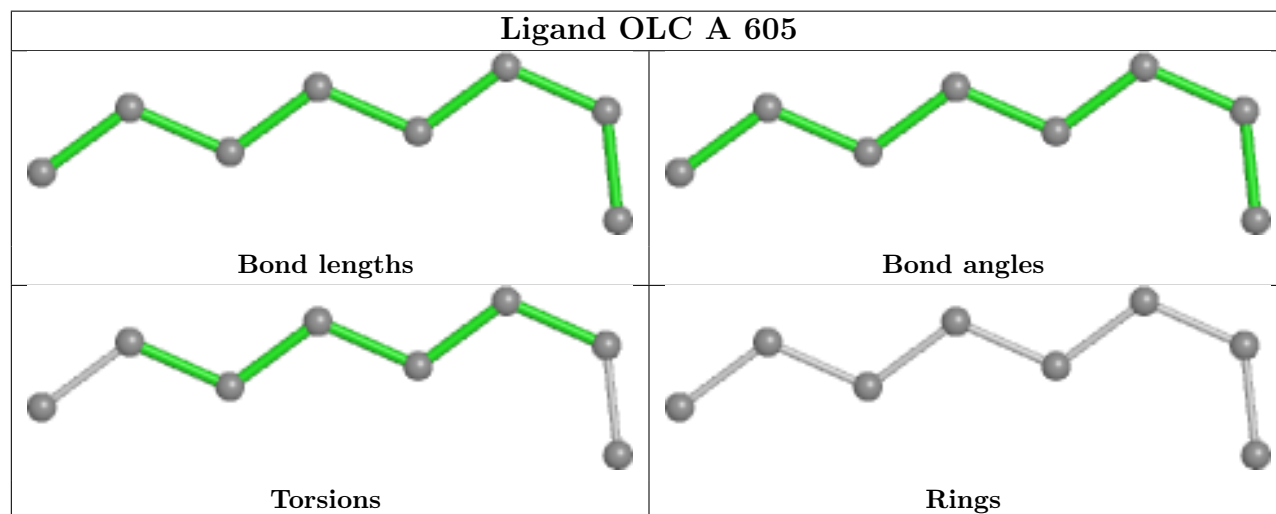
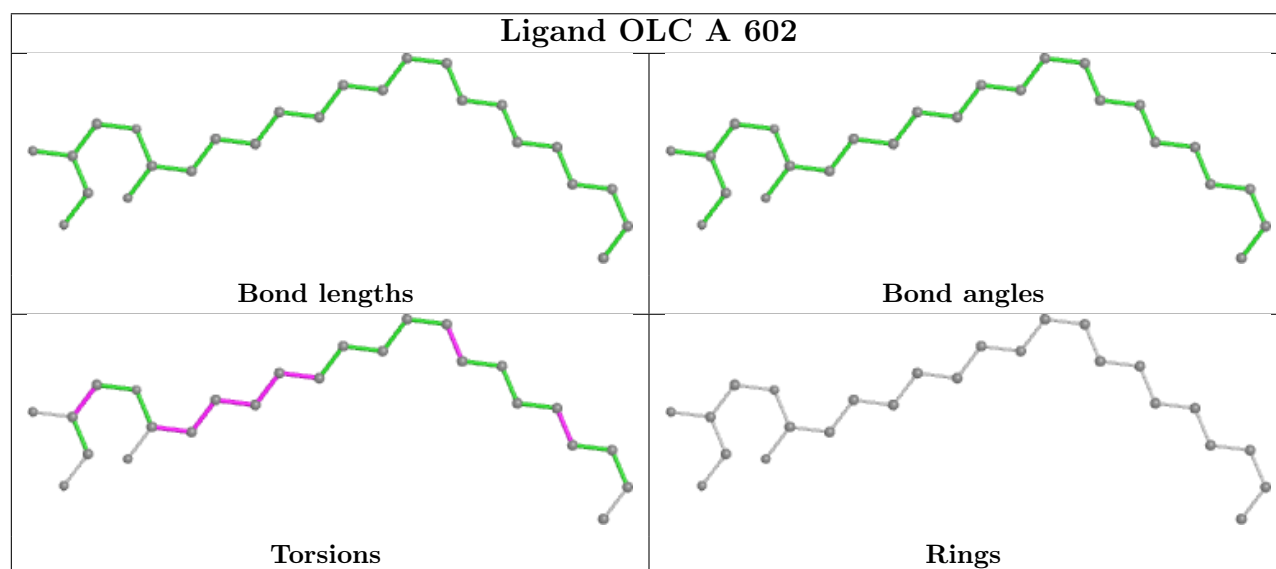
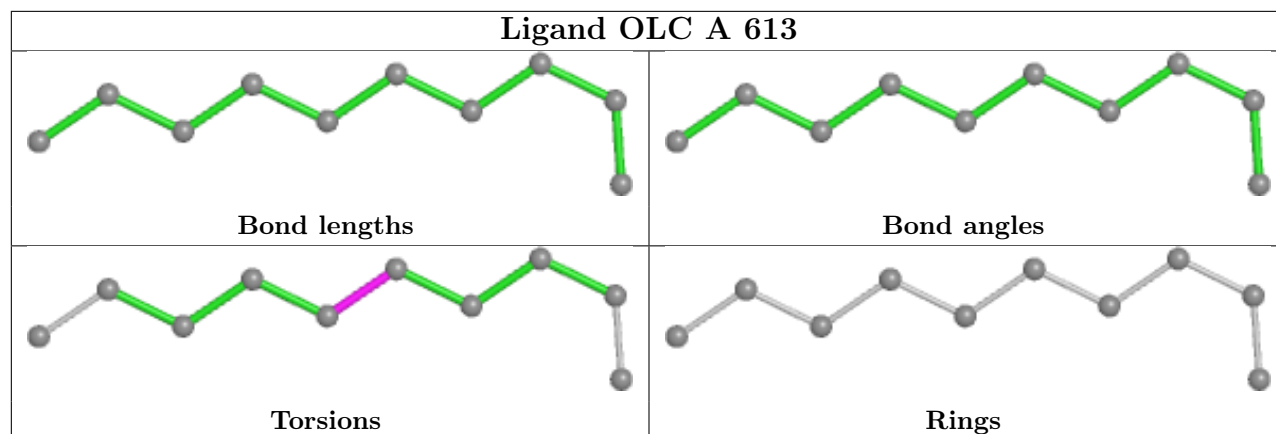
There are no ring outliers.

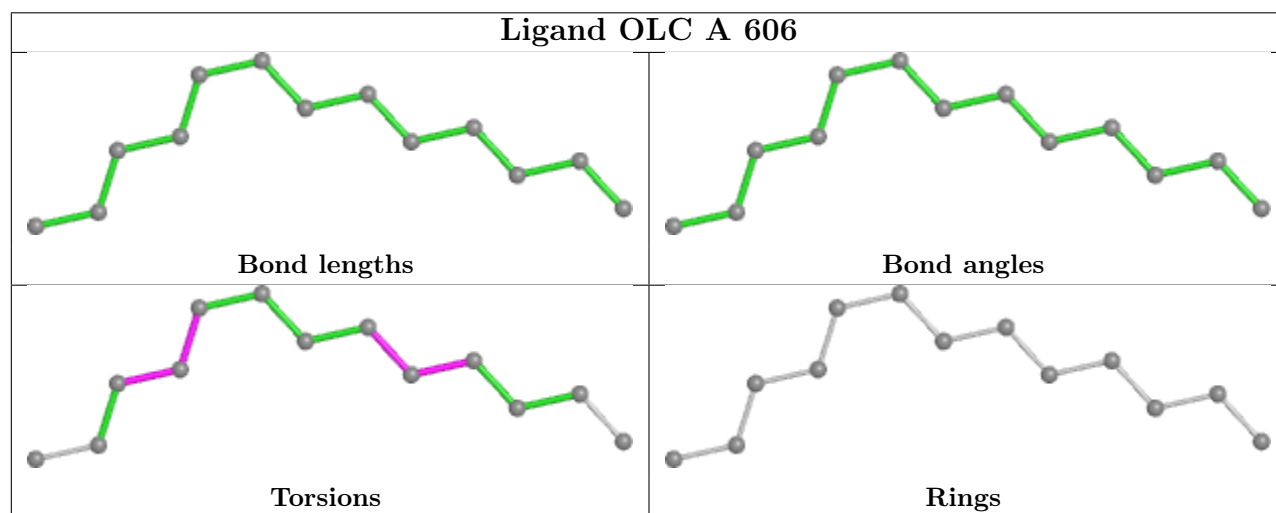
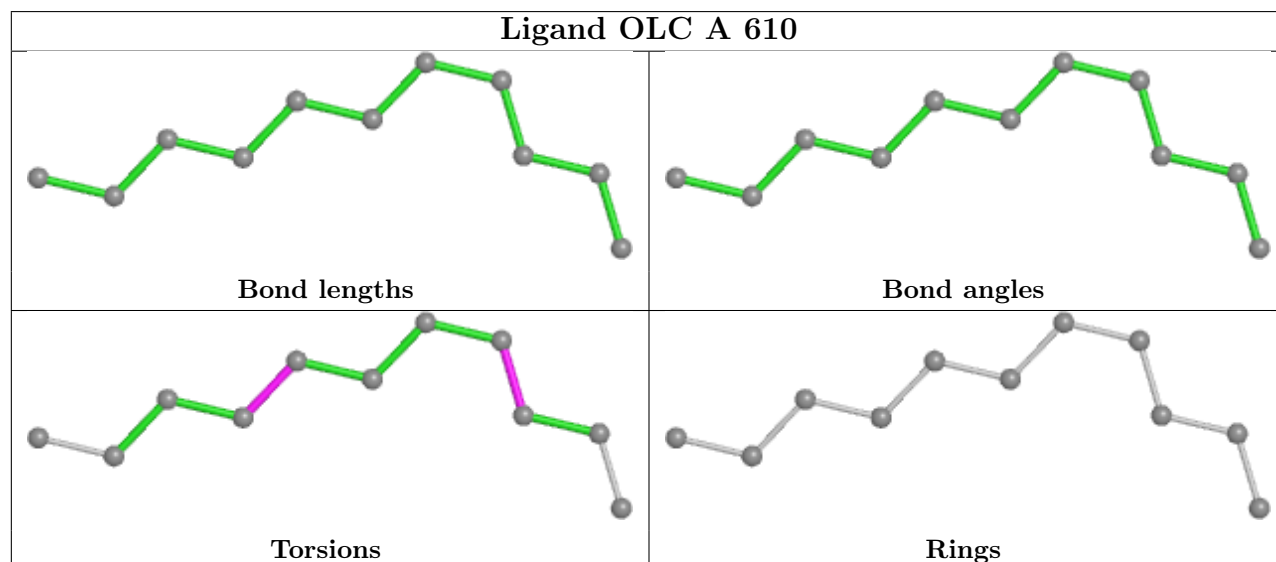
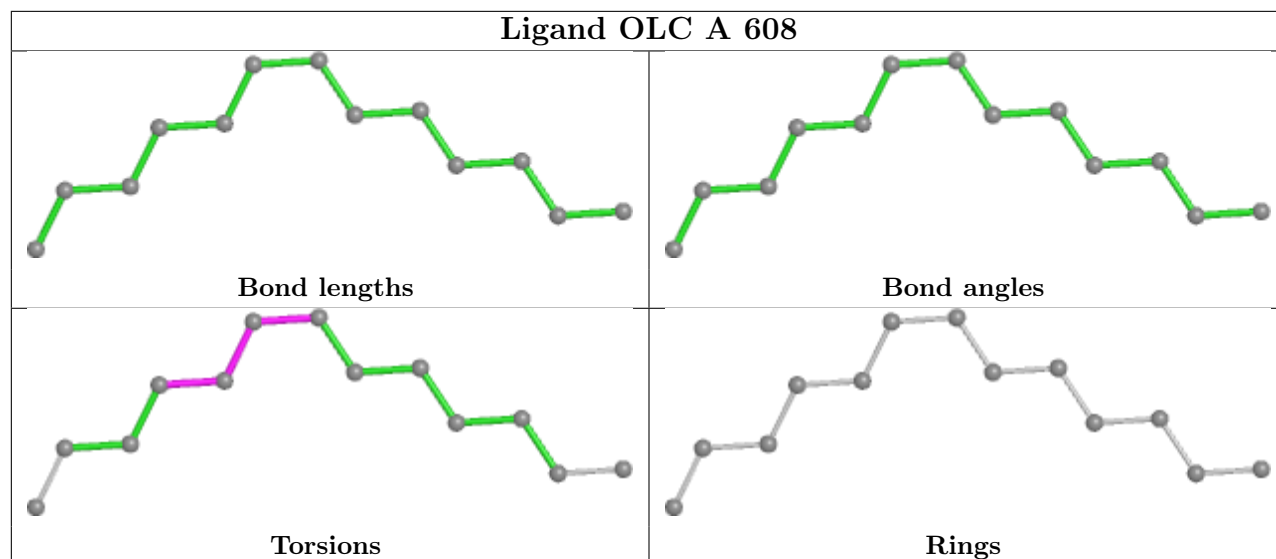
8 monomers are involved in 16 short contacts:

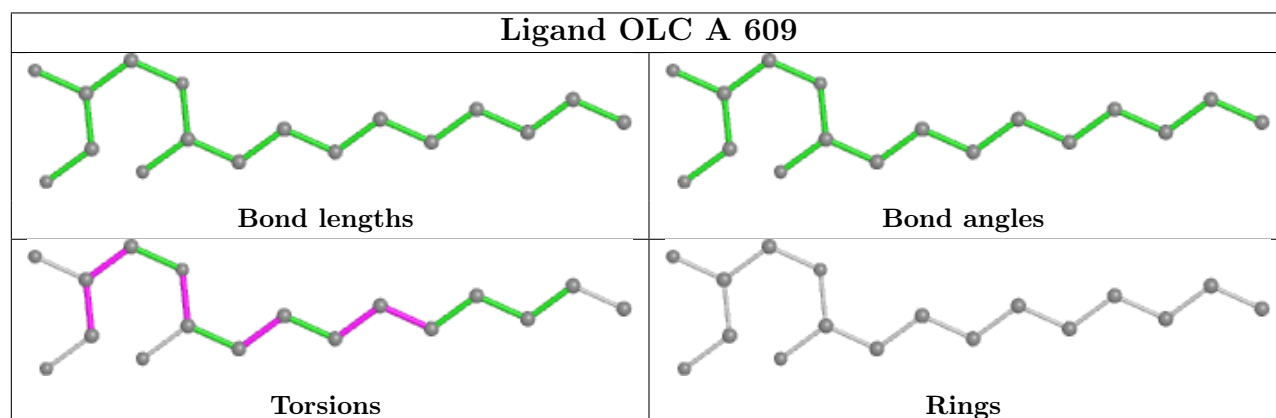
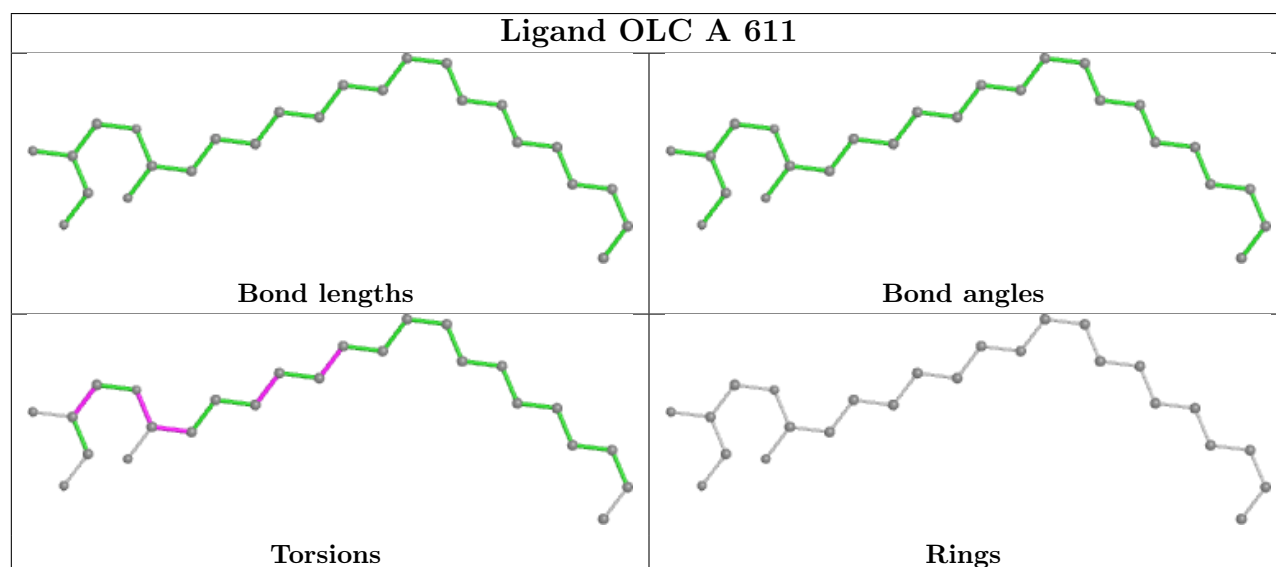
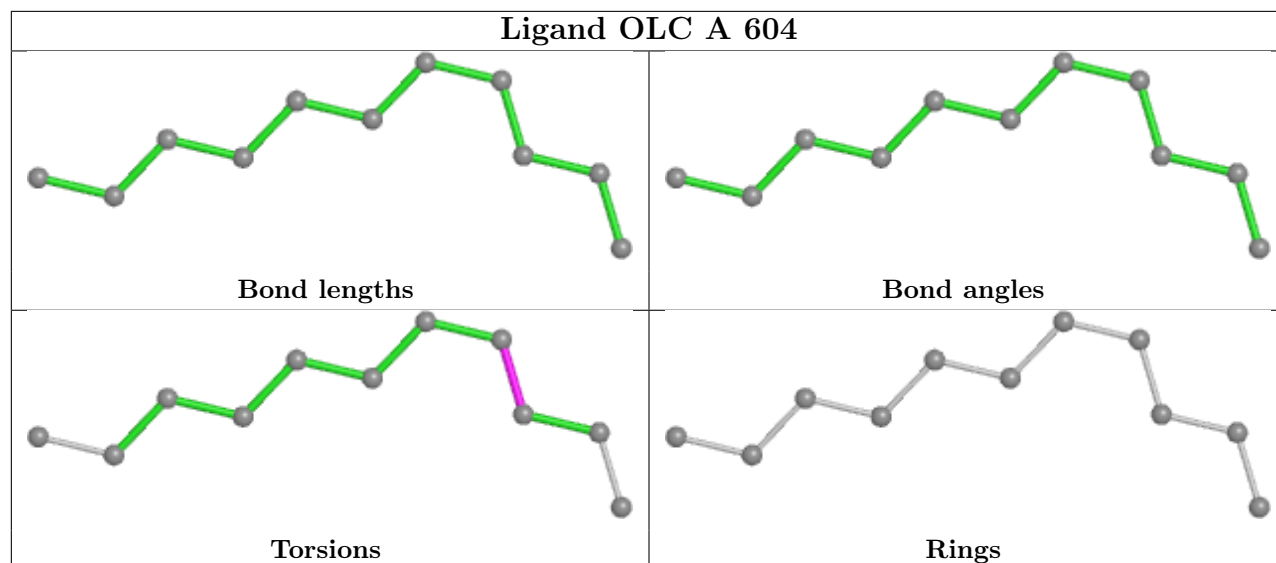
Mol	Chain	Res	Type	Clashes	Symm-Clashes
2	A	614	OLC	3	0
2	A	612	OLC	3	0
2	A	613	OLC	2	0
2	A	610	OLC	1	0
2	A	606	OLC	2	0
2	A	611	OLC	1	0
2	A	609	OLC	2	0
2	A	601	OLC	4	0

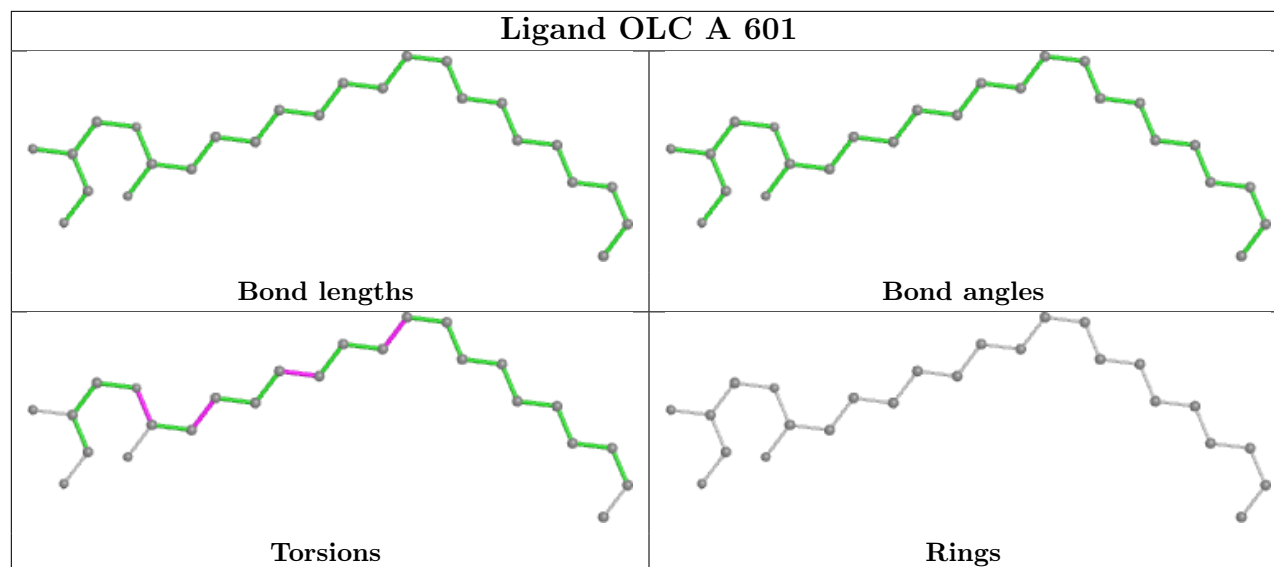
The following is a two-dimensional graphical depiction of Mogul quality analysis of bond lengths, bond angles, torsion angles, and ring geometry for all instances of the Ligand of Interest. In addition, ligands with molecular weight > 250 and outliers as shown on the validation Tables will also be included. For torsion angles, if less than 5% of the Mogul distribution of torsion angles is within 10 degrees of the torsion angle in question, then that torsion angle is considered an outlier. Any bond that is central to one or more torsion angles identified as an outlier by Mogul will be highlighted in the graph. For rings, the root-mean-square deviation (RMSD) between the ring in question and similar rings identified by Mogul is calculated over all ring torsion angles. If the average RMSD is greater than 60 degrees and the minimal RMSD between the ring in question and any Mogul-identified rings is also greater than 60 degrees, then that ring is considered an outlier. The outliers are highlighted in purple. The color gray indicates Mogul did not find sufficient equivalents in the CSD to analyse the geometry.











5.7 Other polymers [\(i\)](#)

There are no such residues in this entry.

5.8 Polymer linkage issues [\(i\)](#)

There are no chain breaks in this entry.

6 Fit of model and data

6.1 Protein, DNA and RNA chains

In the following table, the column labelled ‘#RSRZ > 2’ contains the number (and percentage) of RSRZ outliers, followed by percent RSRZ outliers for the chain as percentile scores relative to all X-ray entries and entries of similar resolution. The OWAB column contains the minimum, median, 95th percentile and maximum values of the occupancy-weighted average B-factor per residue. The column labelled ‘Q < 0.9’ lists the number of (and percentage) of residues with an average occupancy less than 0.9.

Mol	Chain	Analysed	<RSRZ>	#RSRZ>2	OWAB(Å ²)	Q<0.9
1	A	522/522 (100%)	0.14	25 (4%) 30 37	28, 42, 68, 99	0

All (25) RSRZ outliers are listed below:

Mol	Chain	Res	Type	RSRZ
1	A	8	ALA	6.2
1	A	216	LEU	4.7
1	A	520	TYR	4.0
1	A	504	LYS	3.8
1	A	2	LEU	3.5
1	A	71	TYR	3.2
1	A	503	VAL	3.2
1	A	75	GLN	3.2
1	A	508	ARG	3.2
1	A	502	LYS	3.0
1	A	7	ALA	2.9
1	A	6	LEU	2.9
1	A	219	ILE	2.8
1	A	93	LEU	2.6
1	A	11	CYS	2.5
1	A	78	ASP	2.5
1	A	79	ALA	2.5
1	A	505	GLU	2.4
1	A	218	ARG	2.3
1	A	442	MET	2.2
1	A	90	LEU	2.2
1	A	73	SER	2.2
1	A	1	ASN	2.1
1	A	22	PHE	2.0
1	A	214	LEU	2.0

6.2 Non-standard residues in protein, DNA, RNA chains [i](#)

There are no non-standard protein/DNA/RNA residues in this entry.

6.3 Carbohydrates [i](#)

There are no monosaccharides in this entry.

6.4 Ligands [i](#)

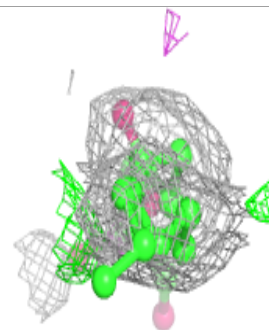
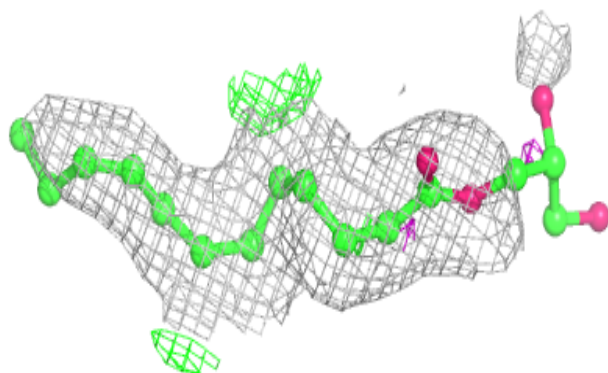
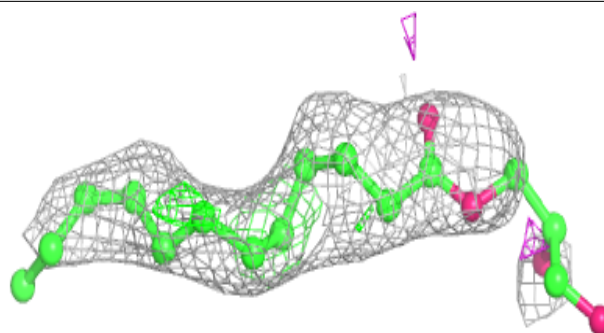
In the following table, the Atoms column lists the number of modelled atoms in the group and the number defined in the chemical component dictionary. The B-factors column lists the minimum, median, 95th percentile and maximum values of B factors of atoms in the group. The column labelled 'Q< 0.9' lists the number of atoms with occupancy less than 0.9.

Mol	Type	Chain	Res	Atoms	RSCC	RSR	B-factors(Å ²)	Q<0.9
2	OLC	A	612	19/25	0.67	0.30	58,66,89,90	0
2	OLC	A	609	17/25	0.71	0.27	55,72,78,84	0
2	OLC	A	611	25/25	0.72	0.35	46,63,92,101	0
2	OLC	A	607	17/25	0.72	0.26	47,58,64,64	0
2	OLC	A	602	25/25	0.75	0.36	38,50,72,82	0
2	OLC	A	601	25/25	0.76	0.38	52,65,84,92	0
2	OLC	A	606	13/25	0.79	0.31	58,65,70,73	0
2	OLC	A	610	11/25	0.81	0.19	43,51,58,60	0
2	OLC	A	604	11/25	0.82	0.24	48,52,62,65	0
2	OLC	A	614	25/25	0.82	0.26	41,51,65,72	0
2	OLC	A	613	10/25	0.83	0.23	51,59,63,66	0
2	OLC	A	605	8/25	0.83	0.21	41,48,49,60	0
2	OLC	A	608	13/25	0.91	0.21	39,51,61,62	0
3	PEG	A	603	7/7	0.91	0.23	44,46,55,59	0

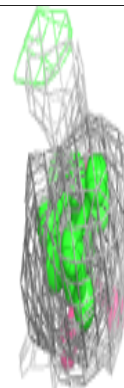
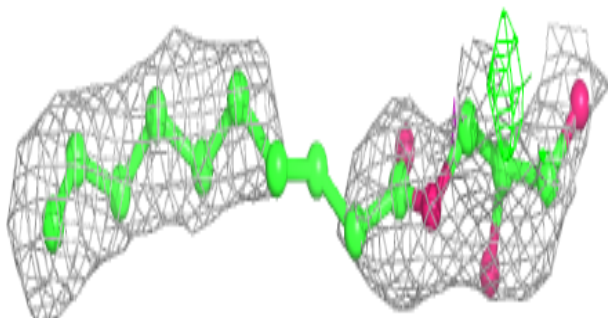
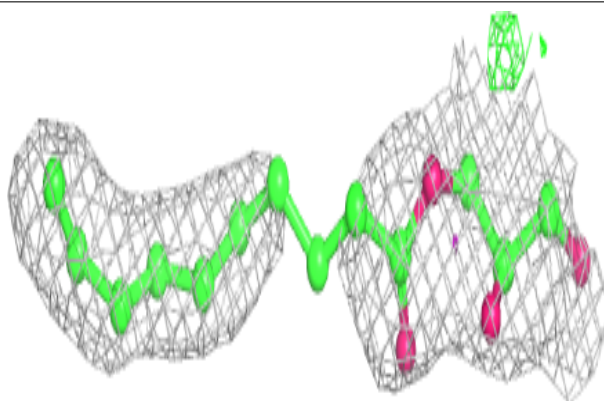
The following is a graphical depiction of the model fit to experimental electron density of all instances of the Ligand of Interest. In addition, ligands with molecular weight > 250 and outliers as shown on the geometry validation Tables will also be included. Each fit is shown from different orientation to approximate a three-dimensional view.

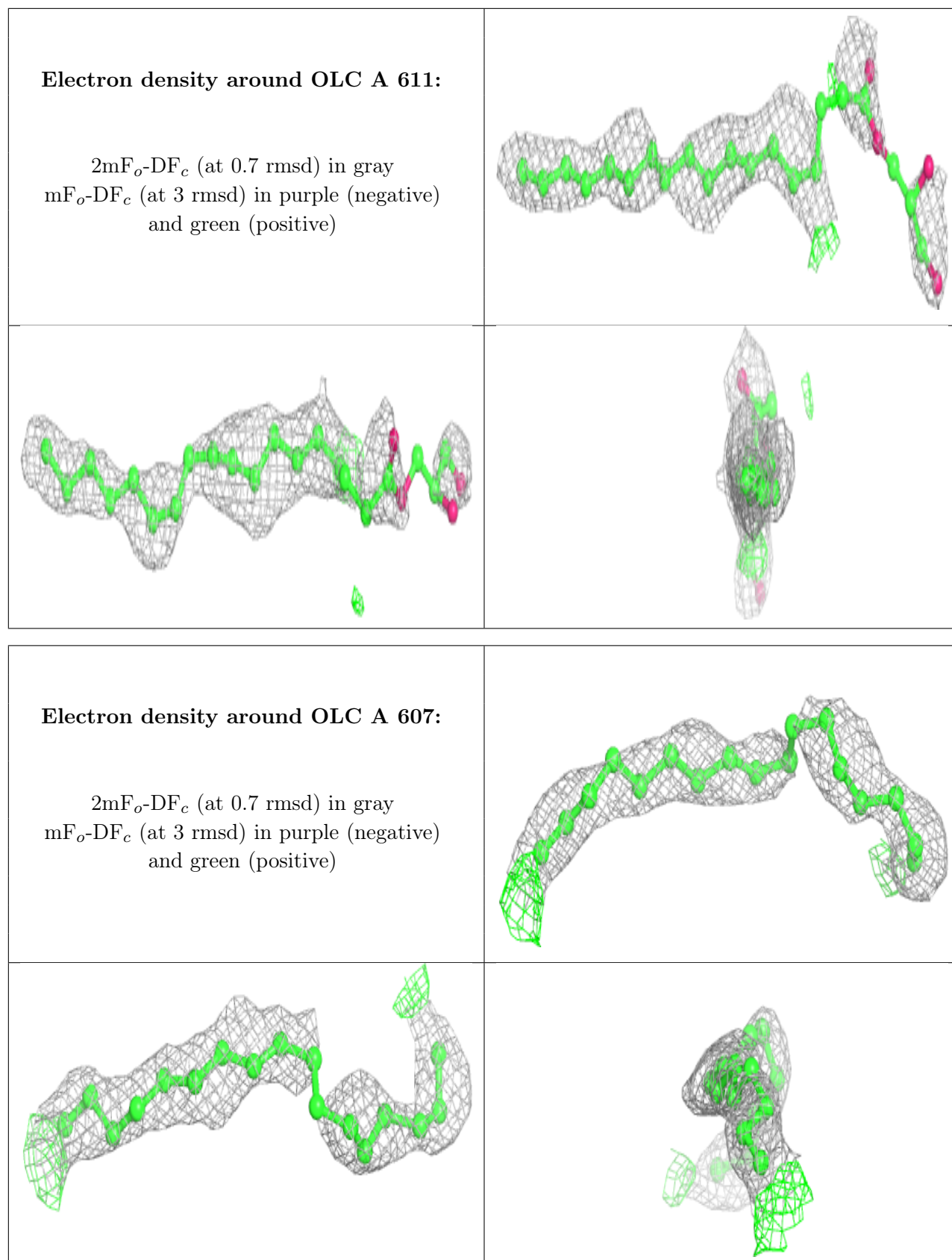
Electron density around OLC A 612:

$2mF_o-DF_c$ (at 0.7 rmsd) in gray
 mF_o-DF_c (at 3 rmsd) in purple (negative)
and green (positive)

**Electron density around OLC A 609:**

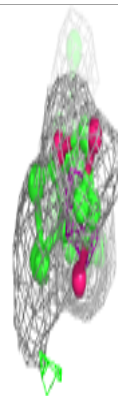
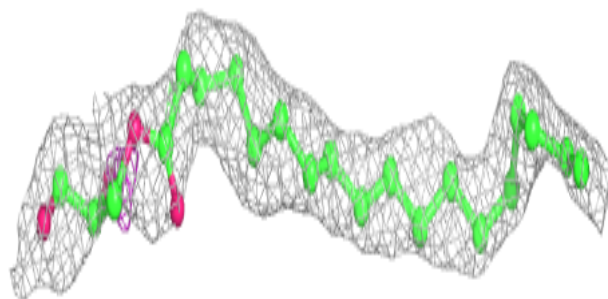
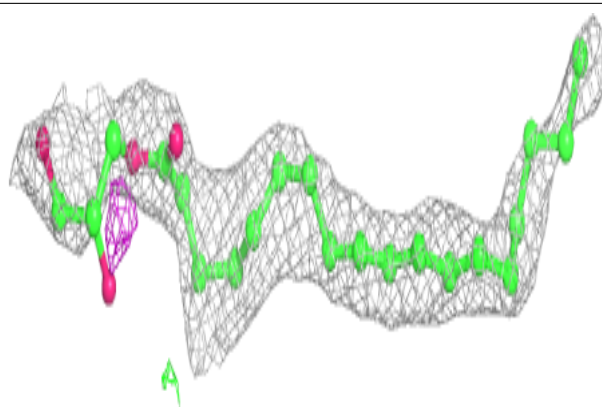
$2mF_o-DF_c$ (at 0.7 rmsd) in gray
 mF_o-DF_c (at 3 rmsd) in purple (negative)
and green (positive)



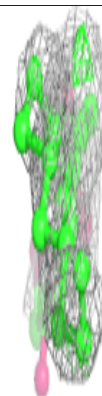
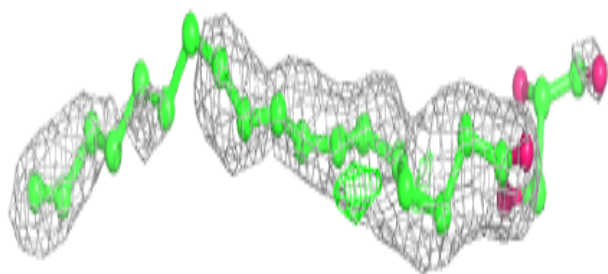
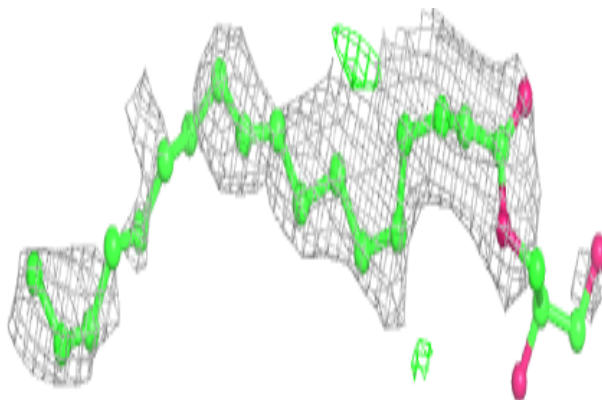


Electron density around OLC A 602:

$2mF_o-DF_c$ (at 0.7 rmsd) in gray
 mF_o-DF_c (at 3 rmsd) in purple (negative)
and green (positive)

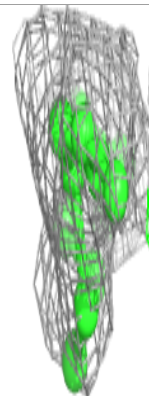
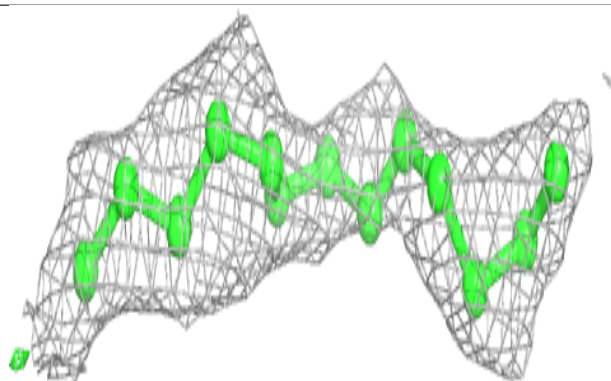
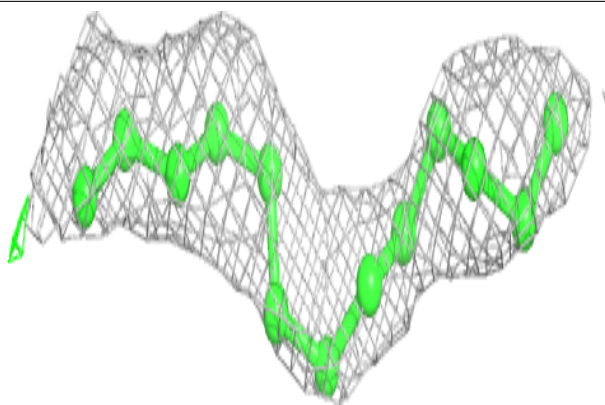
**Electron density around OLC A 601:**

$2mF_o-DF_c$ (at 0.7 rmsd) in gray
 mF_o-DF_c (at 3 rmsd) in purple (negative)
and green (positive)

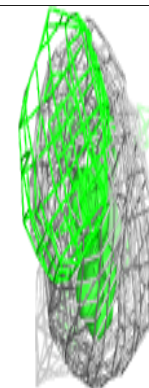
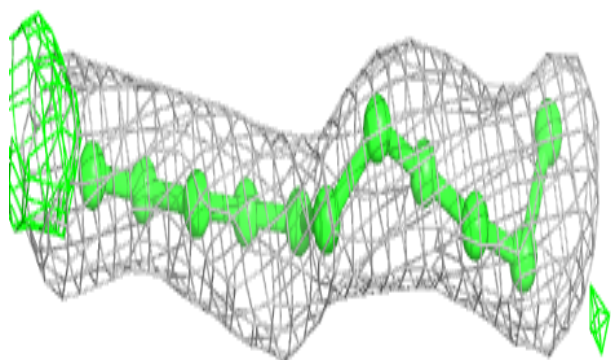
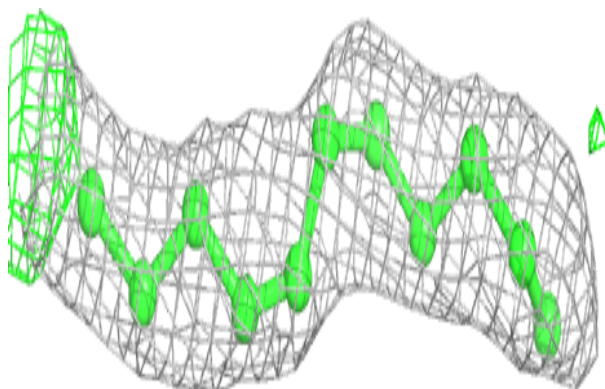


Electron density around OLC A 606:

$2mF_o-DF_c$ (at 0.7 rmsd) in gray
 mF_o-DF_c (at 3 rmsd) in purple (negative)
and green (positive)

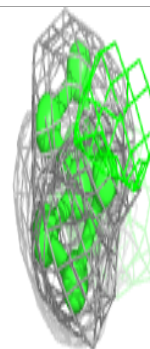
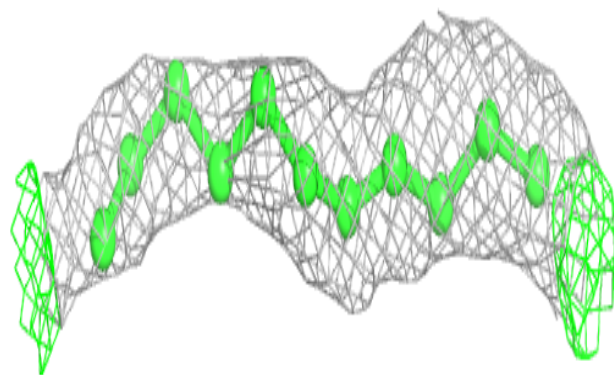
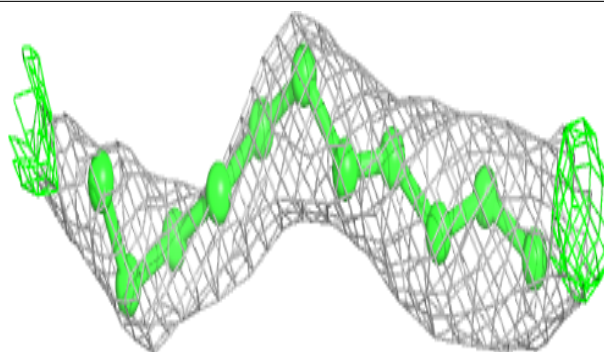
**Electron density around OLC A 610:**

$2mF_o-DF_c$ (at 0.7 rmsd) in gray
 mF_o-DF_c (at 3 rmsd) in purple (negative)
and green (positive)

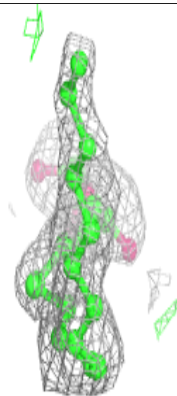
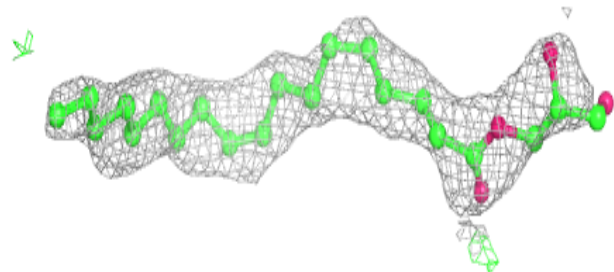
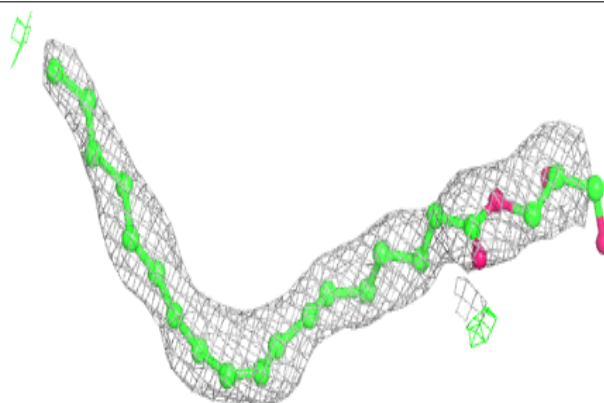


Electron density around OLC A 604:

$2mF_o-DF_c$ (at 0.7 rmsd) in gray
 mF_o-DF_c (at 3 rmsd) in purple (negative)
and green (positive)

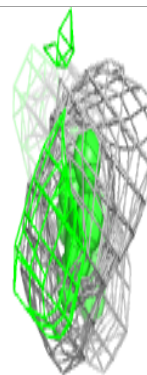
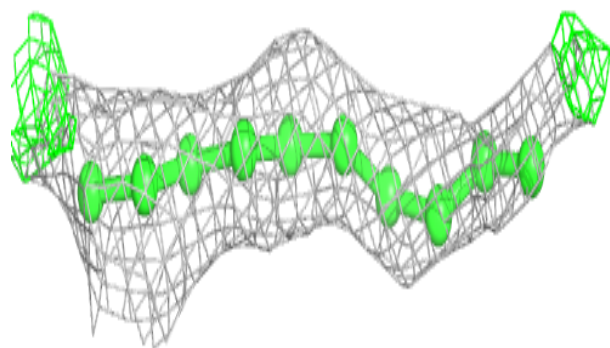
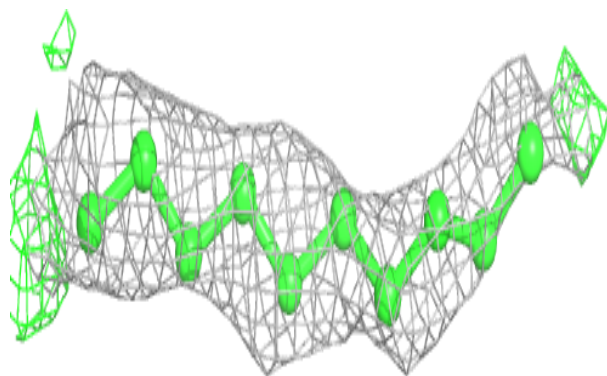
**Electron density around OLC A 614:**

$2mF_o-DF_c$ (at 0.7 rmsd) in gray
 mF_o-DF_c (at 3 rmsd) in purple (negative)
and green (positive)

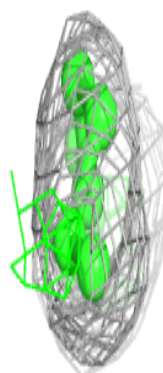
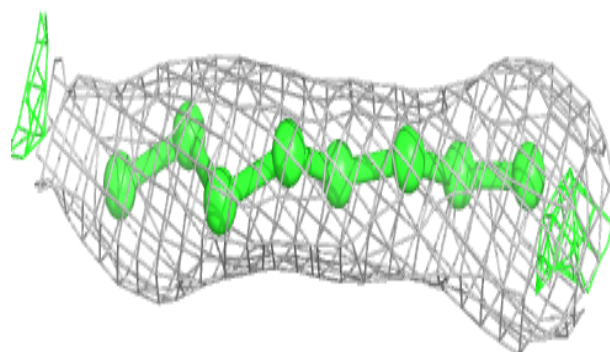
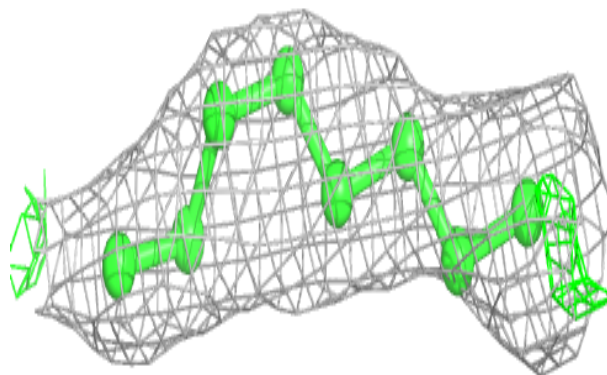


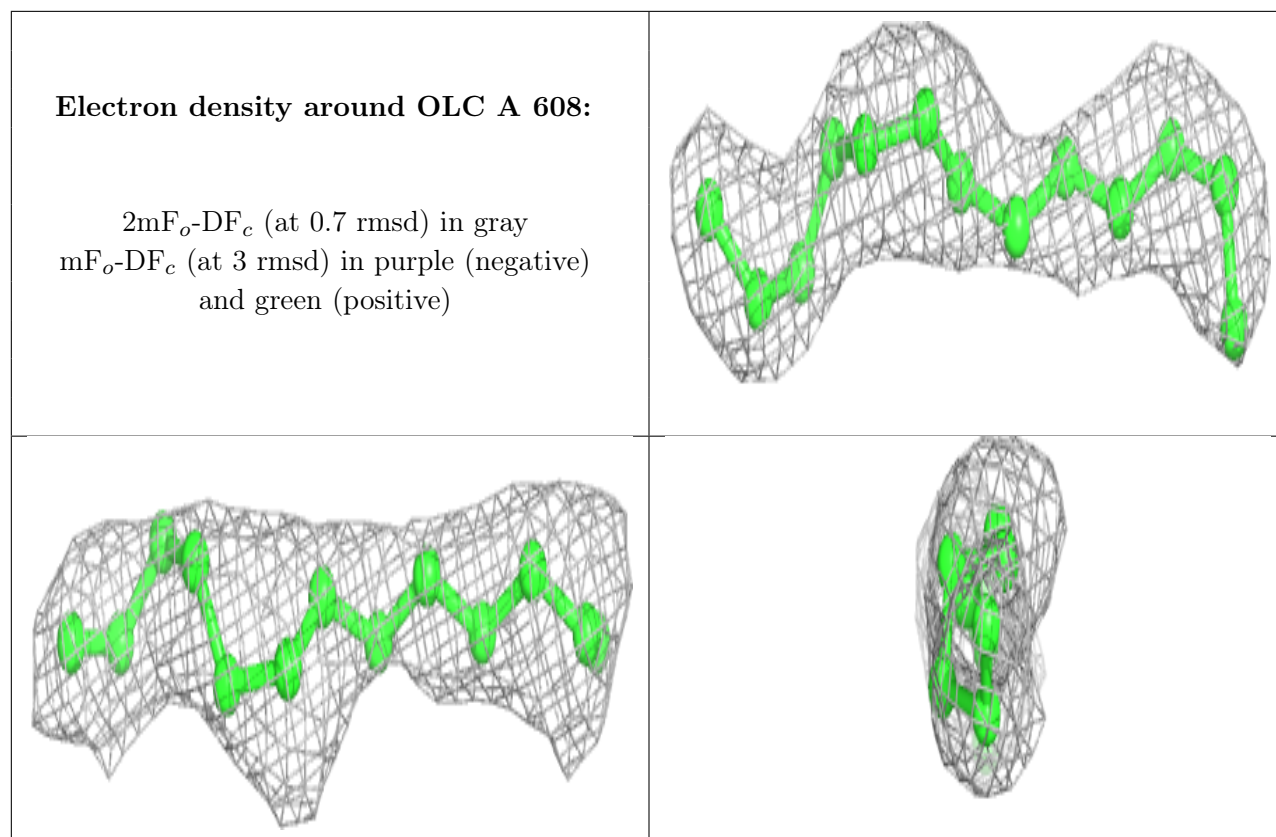
Electron density around OLC A 613:

$2mF_o-DF_c$ (at 0.7 rmsd) in gray
 mF_o-DF_c (at 3 rmsd) in purple (negative)
and green (positive)

**Electron density around OLC A 605:**

$2mF_o-DF_c$ (at 0.7 rmsd) in gray
 mF_o-DF_c (at 3 rmsd) in purple (negative)
and green (positive)





6.5 Other polymers [i](#)

There are no such residues in this entry.