



# wwPDB EM Validation Summary Report ⓘ

Feb 26, 2024 – 08:14 AM EST

PDB ID : 6WCJ  
EMDB ID : EMD-21611  
Title : Asymmetric vertex of the clathrin minicoat cage  
Authors : Paraan, M.; Mendez, J.; Sharum, S.; Kurtin, D.; He, H.; Stagg, S.  
Deposited on : 2020-03-30  
Resolution : 6.30 Å (reported)  
Based on initial model : 6SCT

This is a wwPDB EM Validation Summary Report for a publicly released PDB entry.

We welcome your comments at [validation@mail.wwpdb.org](mailto:validation@mail.wwpdb.org)

A user guide is available at

<https://www.wwpdb.org/validation/2017/EMValidationReportHelp>

with specific help available everywhere you see the ⓘ symbol.

The types of validation reports are described at

<http://www.wwpdb.org/validation/2017/FAQs#types>.

---

The following versions of software and data (see [references ⓘ](#)) were used in the production of this report:

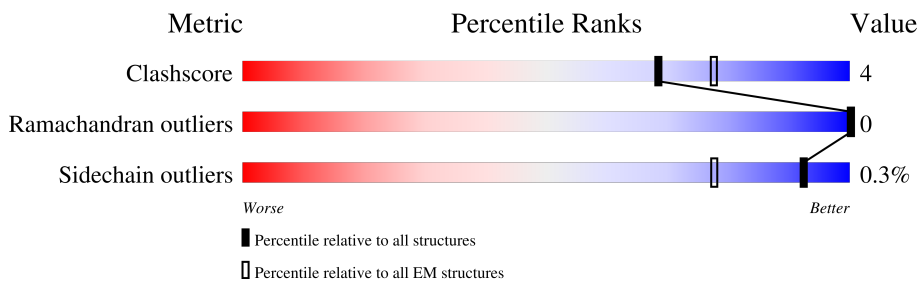
EMDB validation analysis : 0.0.1.dev70  
MolProbity : 4.02b-467  
Percentile statistics : 20191225.v01 (using entries in the PDB archive December 25th 2019)  
MapQ : 1.9.13  
Ideal geometry (proteins) : Engh & Huber (2001)  
Ideal geometry (DNA, RNA) : Parkinson et al. (1996)  
Validation Pipeline (wwPDB-VP) : 2.36

# 1 Overall quality at a glance

The following experimental techniques were used to determine the structure:  
*ELECTRON MICROSCOPY*

The reported resolution of this entry is 6.30 Å.

Percentile scores (ranging between 0-100) for global validation metrics of the entry are shown in the following graphic. The table shows the number of entries on which the scores are based.









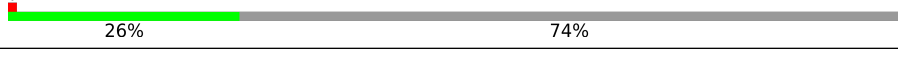
Metric	Whole archive (#Entries)	EM structures (#Entries)
Clashscore	158937	4297
Ramachandran outliers	154571	4023
Sidechain outliers	154315	3826

The table below summarises the geometric issues observed across the polymeric chains and their fit to the map. The red, orange, yellow and green segments of the bar indicate the fraction of residues that contain outliers for  $\geq 3$ , 2, 1 and 0 types of geometric quality criteria respectively. A grey segment represents the fraction of residues that are not modelled. The numeric value for each fraction is indicated below the corresponding segment, with a dot representing fractions  $\leq 5\%$ . The upper red bar (where present) indicates the fraction of residues that have poor fit to the EM map (all-atom inclusion  $< 40\%$ ). The numeric value is given above the bar.

Mol	Chain	Length	Quality of chain
1	A	1675	
1	C	1675	
1	D	1675	
1	G	1675	
1	H	1675	
1	I	1675	
1	K	1675	
1	L	1675	

Continued on next page...

*Continued from previous page...*

Mol	Chain	Length	Quality of chain
1	M	1675	
2	B	228	
2	E	228	
2	F	228	
2	J	228	
2	N	228	
2	O	228	

## 2 Entry composition [i](#)

There are 2 unique types of molecules in this entry. The entry contains 41184 atoms, of which 0 are hydrogens and 0 are deuteriums.

In the tables below, the AltConf column contains the number of residues with at least one atom in alternate conformation and the Trace column contains the number of residues modelled with at most 2 atoms.

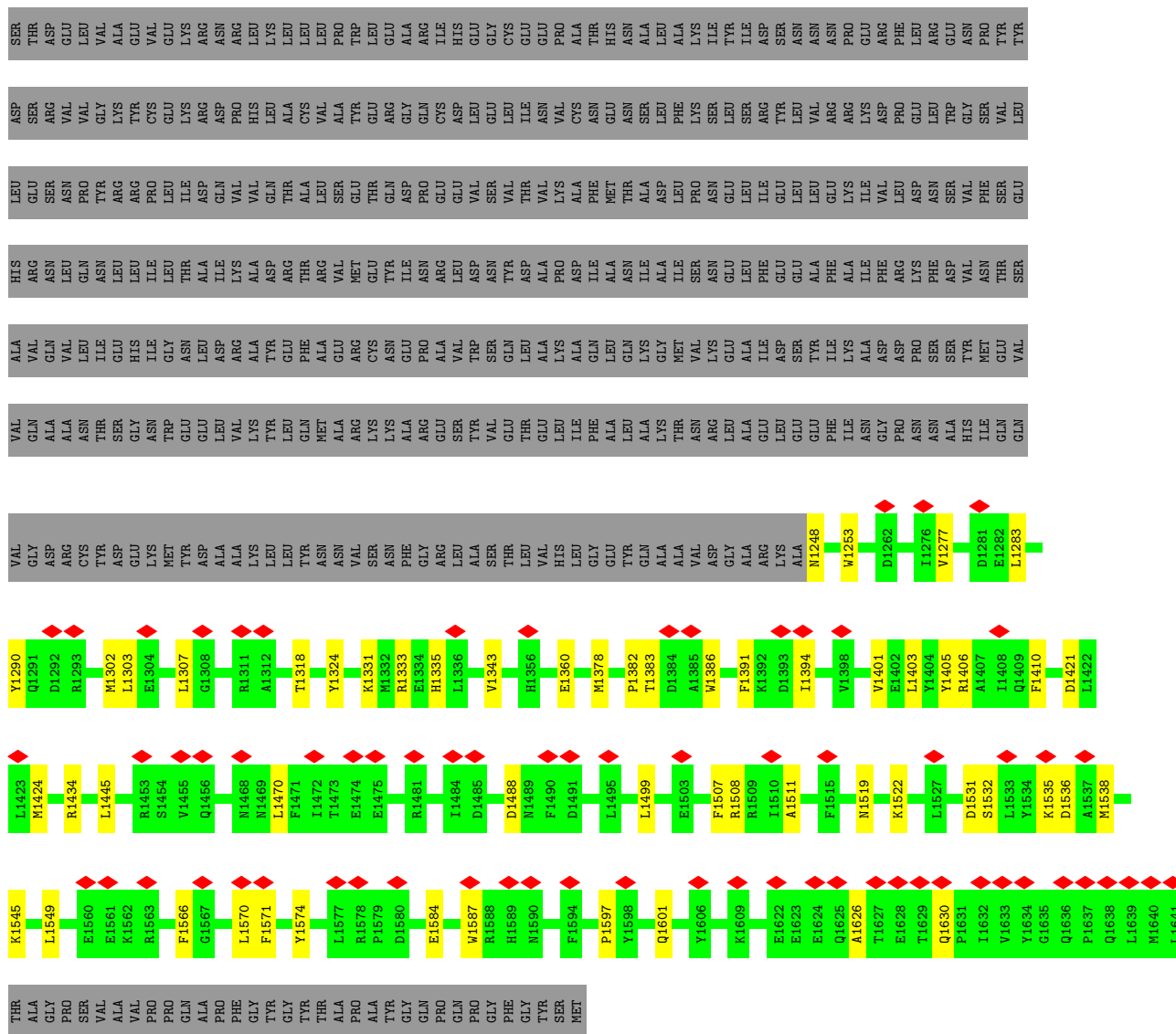
- Molecule 1 is a protein called Clathrin heavy chain 1.

Mol	Chain	Residues	Atoms					AltConf	Trace
			Total	C	N	O	S		
1	A	394	3287	2114	546	607	20	0	0
1	C	394	3287	2114	546	607	20	0	0
1	D	394	3287	2114	546	607	20	0	0
1	L	666	5410	3442	927	1016	25	0	0
1	M	441	3600	2294	615	676	15	0	0
1	G	666	5410	3442	927	1016	25	0	0
1	H	441	3600	2294	615	676	15	0	0
1	I	666	5410	3442	927	1016	25	0	0
1	K	441	3600	2294	615	676	15	0	0

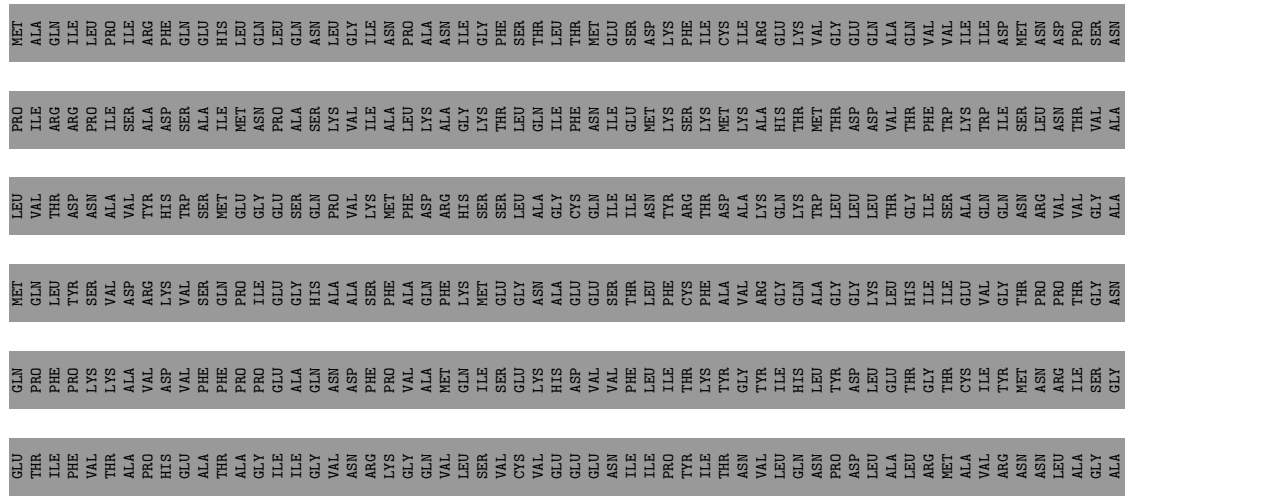
- Molecule 2 is a protein called Clathrin light chain B.

Mol	Chain	Residues	Atoms					AltConf	Trace
			Total	C	N	O	S		
2	B	109	916	564	173	175	4	0	0
2	E	109	916	564	173	175	4	0	0
2	F	109	916	564	173	175	4	0	0
2	O	59	515	313	101	100	1	0	0
2	J	59	515	313	101	100	1	0	0
2	N	59	515	313	101	100	1	0	0





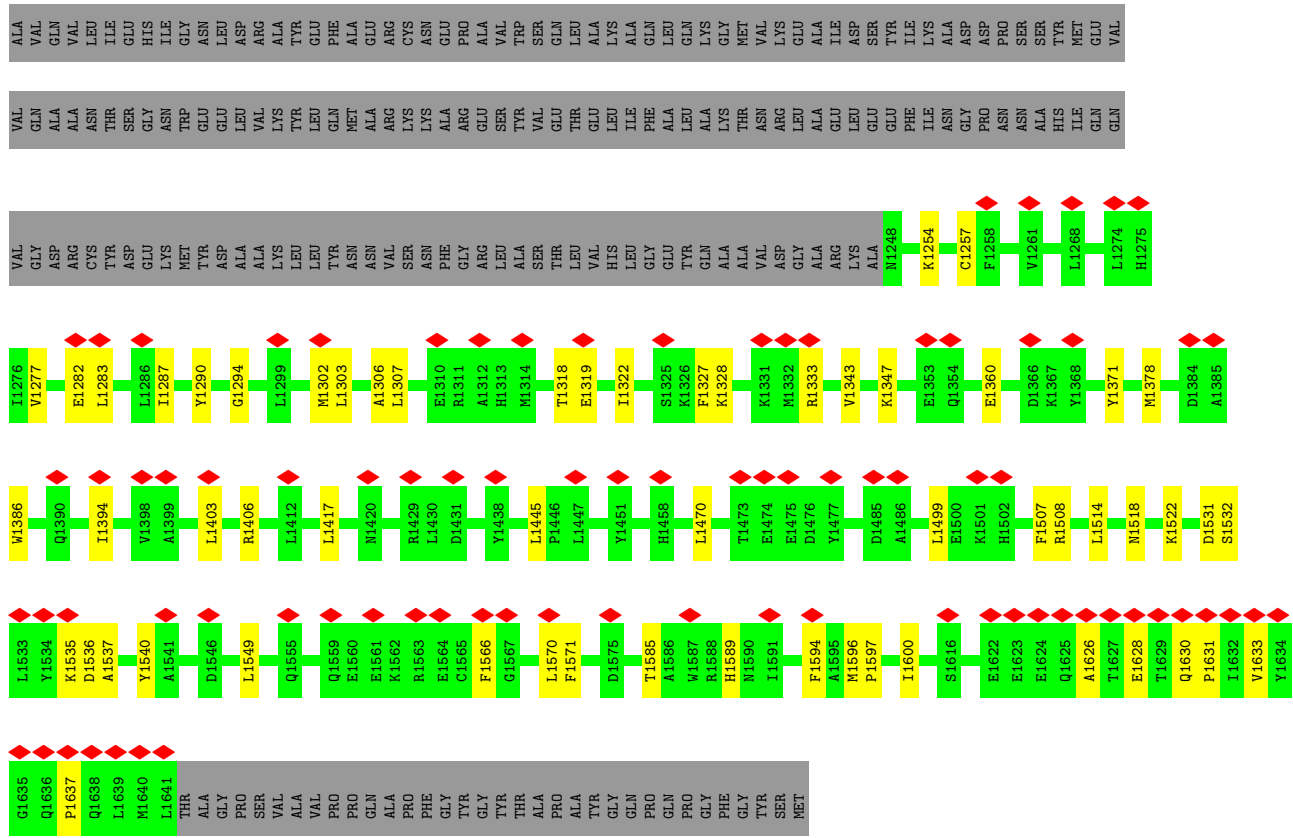
• Molecule 1: Clathrin heavy chain 1



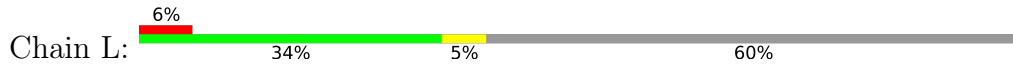


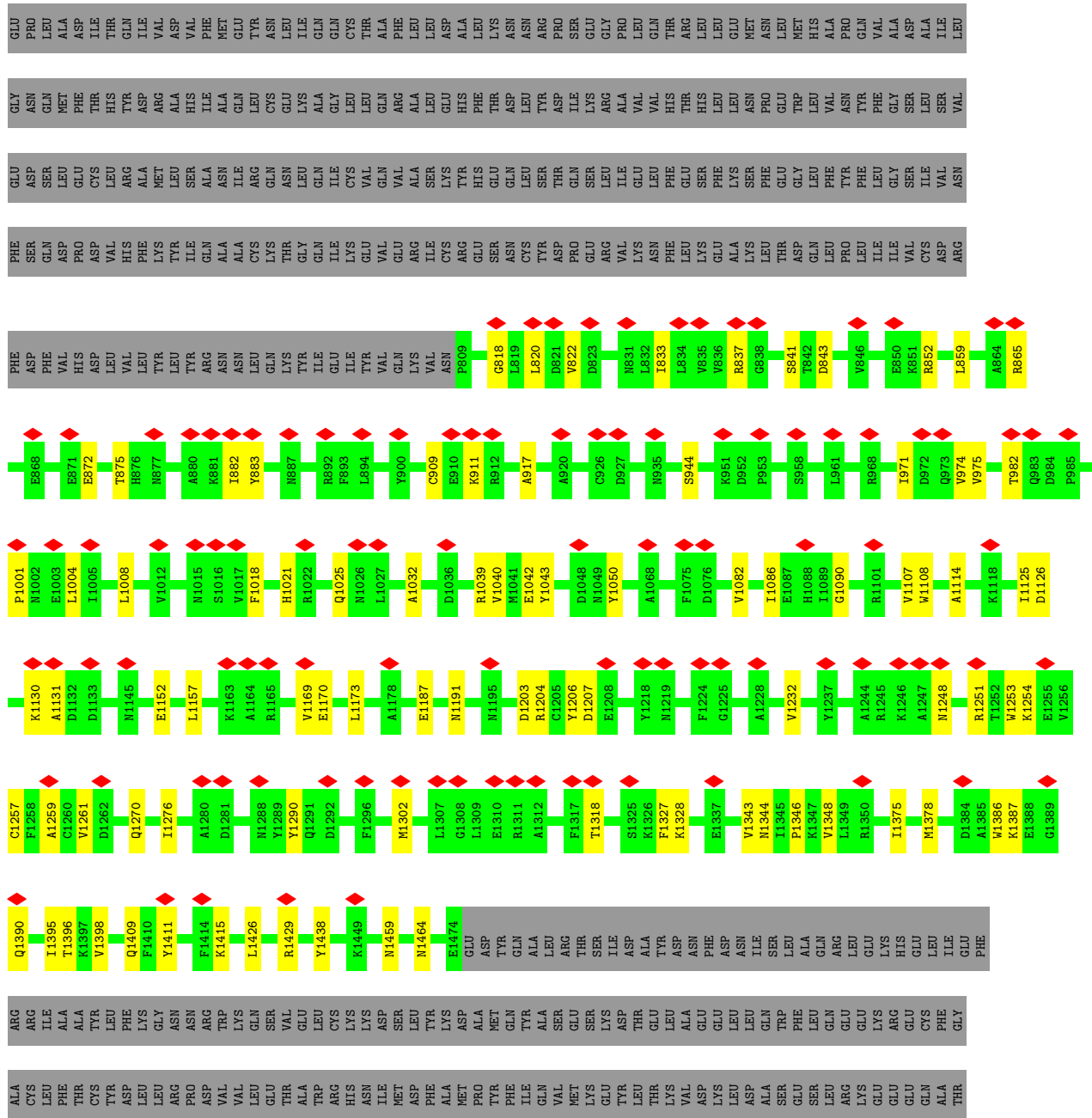




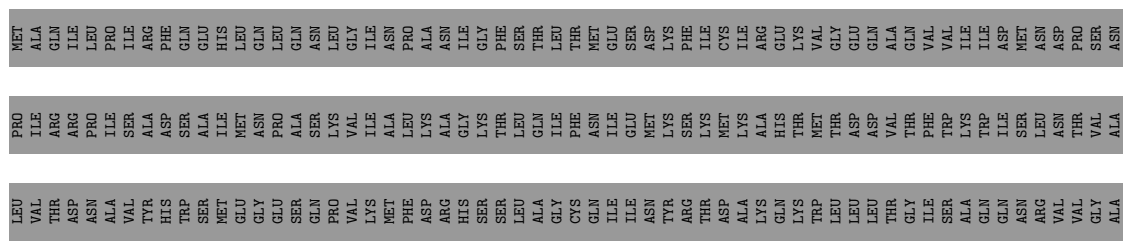


● Molecule 1: Clathrin heavy chain 1





Molecule 1: Clathrin heavy chain 1



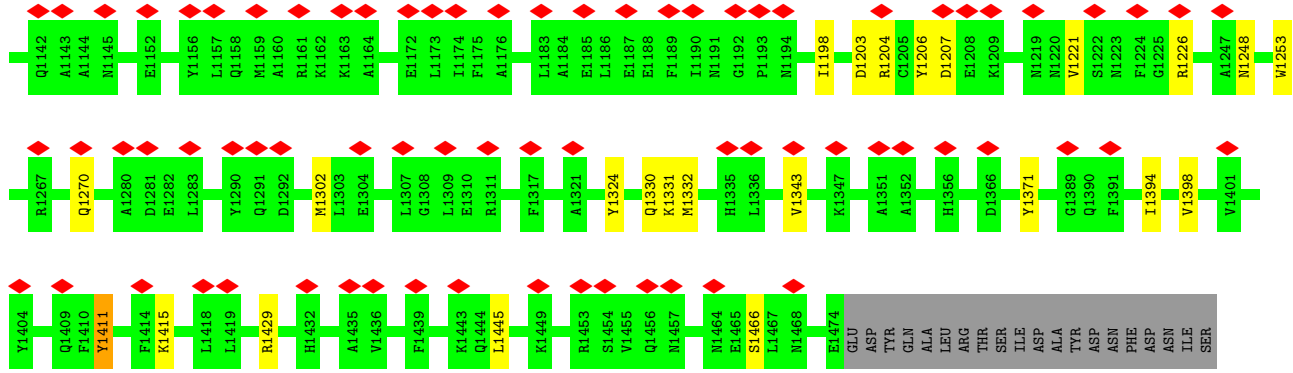












LEU ALA  
GLN TRP  
PHE LEU  
ARG LEU  
GLY LEU  
GLU LEU  
LYS LEU  
HIS LEU

GLN TRP  
PHE LEU  
ARG LEU  
GLY LEU  
GLU LEU  
LYS LEU  
HIS LEU

ALA SER  
GLU TRP  
SER LEU  
LEU LEU  
LEU LEU  
LYS LEU  
GLY LEU

MET

• Molecule 1: Clathrin heavy chain 1



MET ALA  
ALA ILE  
SER LEU  
LEU LEU  
LEU LEU  
LYS LEU  
GLY LEU

PRO ILE  
LEU ARG  
ARG PRO  
SER LEU  
SER LEU  
LEU LEU  
LYS LEU

LEU VAL  
THR ASP  
SER ASN  
VAL ALA  
VAL ALA  
TYR THR  
HIS THR

MET GLN  
LEU TYR  
SER LEU  
VAL VAL  
ASP VAL  
ARG VAL  
LYS VAL

GLN PRO  
THR LEU  
PHE PRO  
VAL ASP  
LYS VAL  
ALA VAL  
PRO VAL

GLU THR  
ILE PHE  
VAL VAL  
ARG ALA  
LYS THR  
PHE THR  
GLY THR

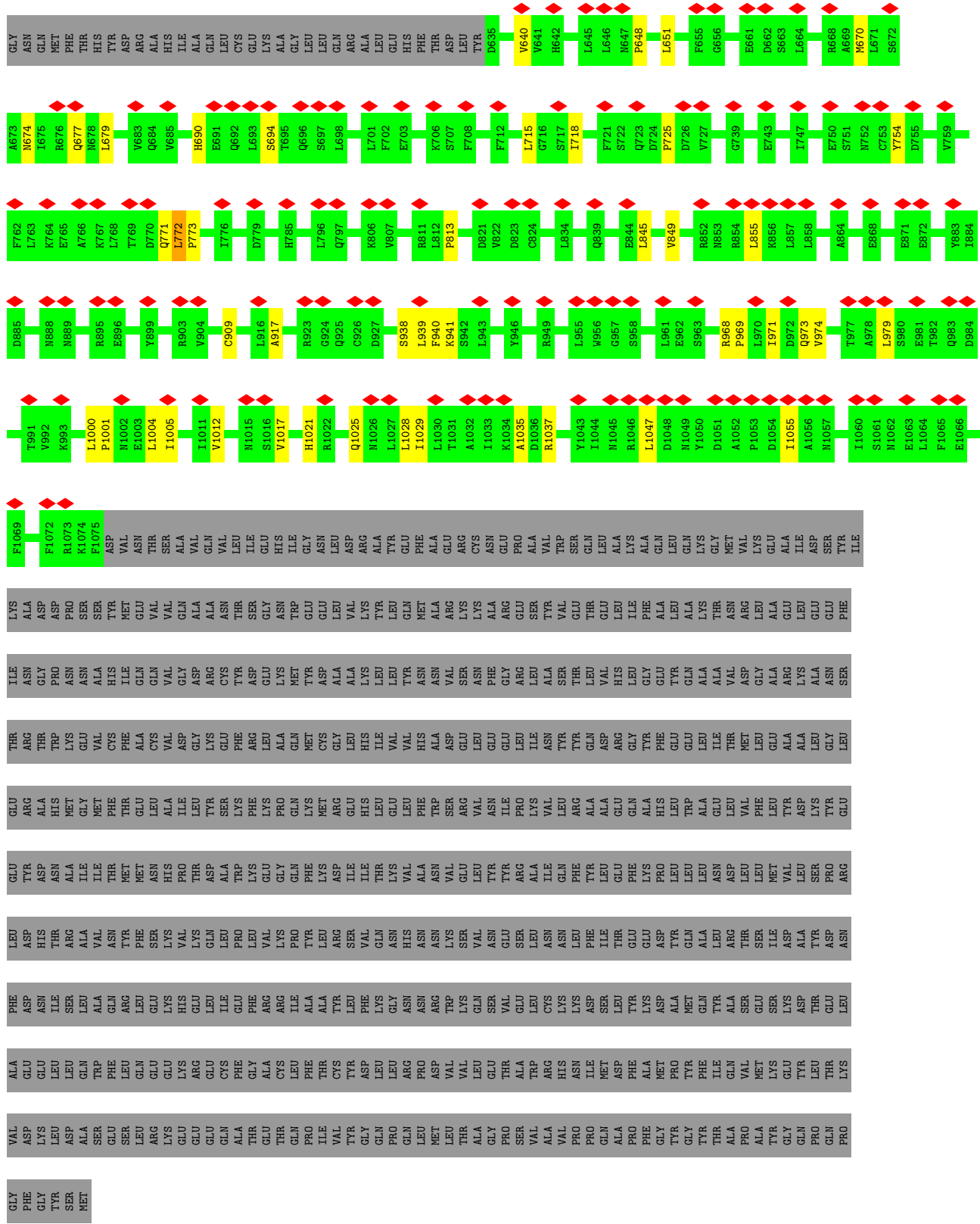
GLU GLU  
PHE PHE  
ARG ALA  
LYS THR  
PHE THR  
GLN THR  
ILE THR

LEU LEU  
ASP ASN  
GLN THR  
SER LEU  
VAL VAL  
VAL VAL  
GLY VAL

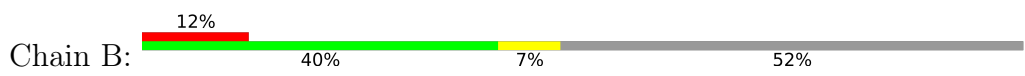
ARG ALA  
ASN VAL  
VAL VAL  
PRO VAL  
ASN VAL  
LYS VAL  
GLN VAL

GLU PRO  
LEU LEU  
ALA VAL  
ASP VAL  
ILE VAL  
THR VAL  
LEU VAL





- Molecule 2: Clathrin light chain B







MET ALA ASP ASP PHE GLY PHE PHE SER SER SER SER SER SER GLY SER GLY PRO PRO GLU ALA ALA ALA GLU ASP ASP ASP ALA ALA ALA PHE LEU ALA ALA GLN GLN SER SER SER ASP ASP ASP ALA ALA TYR ALA PHE LEU ALA ILE ALA ALA GLN ALA SER ASP ARG ARG ILE ALA ALA TYR GLN ILE GLU ASP ASN ASP GLY PHE PHE GLY

SER GLY ALA SER ASP PHE MET GLY ALA THR VAL ASN GLN SER ASP VAL PHE GLN ALA ALA ASN GLY TYR ALA ALA ALA ILE ILE ALA GLN ALA SER ASP ARG ARG ILE THR THR GLN GLU P99 E100 R103 R106 E107 Q109 R110 R111 R112 E115 E126 W127 R128 E137 E147

R148 N149 I156 A156 D157 LYS ALA PHE THR VAL ASN GLN SER ASP VAL PHE GLN ALA ALA ILE ILE TYR VAL VAL ALA ALA SER LYS GLU THR THR GLY THR TRP GLU LYS VAL ALA GLN LEU CYS PHE ASN PRO LYS SER LYS GLN CYS LYS ASP VAL

SER ARG LEU SER ARG VAL LEU MET SER PHE LEU LYS THR THR PRO LEU SER ARG

● Molecule 2: Clathrin light chain B



MET ALA ASP ASP PHE GLY PHE PHE SER SER SER SER SER SER GLY SER GLY PRO PRO GLU ALA ALA ALA ALA ASN GLU GLY VAL PRO ASP PRO ALA ALA ALA TYR ALA PHE LEU ALA ILE ALA ALA GLN ALA SER ASP ARG ARG ILE THR THR GLN GLU P99 E100 R103 E107 R128 E137 R154 I155 A156 D157 LYS ALA PHE TYR GLN PRO

SER GLY ALA SER ASP PHE MET GLY ALA THR VAL ASN GLN SER ASP VAL PHE GLN ALA ALA ASN GLU GLY VAL PRO ASP PRO ALA ALA ALA TYR ALA PHE LEU ALA ILE ALA ALA GLN ALA SER ASP ARG ARG ILE THR THR GLN GLU P99 E100 R103 E107 R128 E137 R154 I155 A156 D157 LYS ALA PHE TYR GLN PRO

ASP ALA ASP ILE ILE TYR VAL ALA ALA GLU GLU ALA PHE VAL LYS GLU SER LYS PHE VAL PHE GLN LYS GLU TYR VAL ALA MET VAL VAL LEU ARG ARG SER VAL ASP VAL ARG LEU MET VAL VAL MET SER LEU LYS GLN THR

PRO LEU SER ARG

## 4 Experimental information

Property	Value	Source
EM reconstruction method	SINGLE PARTICLE	Depositor
Imposed symmetry	POINT, C1	Depositor
Number of particles used	305413	Depositor
Resolution determination method	FSC 0.143 CUT-OFF	Depositor
CTF correction method	PHASE FLIPPING AND AMPLITUDE CORRECTION	Depositor
Microscope	FEI TITAN KRIOS	Depositor
Voltage (kV)	300	Depositor
Electron dose ( $e^-/\text{\AA}^2$ )	50	Depositor
Minimum defocus (nm)	3000	Depositor
Maximum defocus (nm)	5000	Depositor
Magnification	35000	Depositor
Image detector	GATAN K3 (6k x 4k)	Depositor
Maximum map value	19.387	Depositor
Minimum map value	-9.134	Depositor
Average map value	0.008	Depositor
Map value standard deviation	0.238	Depositor
Recommended contour level	4.0	Depositor
Map size (Å)	793.8, 793.8, 793.8	wwPDB
Map dimensions	600, 600, 600	wwPDB
Map angles (°)	90.0, 90.0, 90.0	wwPDB
Pixel spacing (Å)	1.323, 1.323, 1.323	Depositor

## 5 Model quality [i](#)

### 5.1 Standard geometry [i](#)

The Z score for a bond length (or angle) is the number of standard deviations the observed value is removed from the expected value. A bond length (or angle) with  $|Z| > 5$  is considered an outlier worth inspection. RMSZ is the root-mean-square of all Z scores of the bond lengths (or angles).

Mol	Chain	Bond lengths		Bond angles	
		RMSZ	# Z  >5	RMSZ	# Z  >5
1	A	0.23	0/3362	0.36	0/4543
1	C	0.23	0/3362	0.36	0/4543
1	D	0.23	0/3362	0.35	0/4543
1	G	0.23	0/5518	0.36	0/7475
1	H	0.23	0/3669	0.36	0/4973
1	I	0.23	0/5518	0.36	0/7475
1	K	0.23	0/3669	0.36	0/4973
1	L	0.23	0/5518	0.36	0/7475
1	M	0.23	0/3669	0.36	0/4973
2	B	0.22	0/929	0.32	0/1239
2	E	0.22	0/929	0.32	0/1239
2	F	0.22	0/929	0.31	0/1239
2	J	0.21	0/521	0.31	0/692
2	N	0.21	0/521	0.30	0/692
2	O	0.21	0/521	0.30	0/692
All	All	0.23	0/41997	0.36	0/56766

There are no bond length outliers.

There are no bond angle outliers.

There are no chirality outliers.

There are no planarity outliers.

### 5.2 Too-close contacts [i](#)

In the following table, the Non-H and H(model) columns list the number of non-hydrogen atoms and hydrogen atoms in the chain respectively. The H(added) column lists the number of hydrogen atoms added and optimized by MolProbity. The Clashes column lists the number of clashes within the asymmetric unit, whereas Symm-Clashes lists symmetry-related clashes.

Mol	Chain	Non-H	H(model)	H(added)	Clashes	Symm-Clashes
1	A	3287	0	3239	34	0

*Continued on next page...*

Continued from previous page...

Mol	Chain	Non-H	H(model)	H(added)	Clashes	Symm-Clashes
1	C	3287	0	3239	31	0
1	D	3287	0	3239	35	0
1	G	5410	0	5373	46	0
1	H	3600	0	3597	28	0
1	I	5410	0	5373	31	0
1	K	3600	0	3597	25	0
1	L	5410	0	5373	52	0
1	M	3600	0	3597	34	0
2	B	916	0	917	12	0
2	E	916	0	917	7	0
2	F	916	0	917	4	0
2	J	515	0	510	2	0
2	N	515	0	510	0	0
2	O	515	0	510	0	0
All	All	41184	0	40908	314	0

The all-atom clashscore is defined as the number of clashes found per 1000 atoms (including hydrogen atoms). The all-atom clashscore for this structure is 4.

The worst 5 of 314 close contacts within the same asymmetric unit are listed below, sorted by their clash magnitude.

Atom-1	Atom-2	Interatomic distance (Å)	Clash overlap (Å)
1:C:1558:LEU:HD22	1:C:1591:ILE:HG21	1.76	0.66
1:H:934:CYS:HA	1:H:938:SER:HB3	1.78	0.65
1:M:983:GLN:HE22	1:G:892:ARG:HB2	1.61	0.65
1:C:1514:LEU:O	1:C:1518:ASN:ND2	2.30	0.63
1:L:975:VAL:HA	1:L:1008:LEU:HD13	1.81	0.63

There are no symmetry-related clashes.

## 5.3 Torsion angles [i](#)

### 5.3.1 Protein backbone [i](#)

In the following table, the Percentiles column shows the percent Ramachandran outliers of the chain as a percentile score with respect to all PDB entries followed by that with respect to all EM entries.

The Analysed column shows the number of residues for which the backbone conformation was analysed, and the total number of residues.

Mol	Chain	Analysed	Favoured	Allowed	Outliers	Percentiles	
1	A	392/1675 (23%)	390 (100%)	2 (0%)	0	100	100
1	C	392/1675 (23%)	387 (99%)	5 (1%)	0	100	100
1	D	392/1675 (23%)	388 (99%)	4 (1%)	0	100	100
1	G	664/1675 (40%)	654 (98%)	10 (2%)	0	100	100
1	H	439/1675 (26%)	420 (96%)	19 (4%)	0	100	100
1	I	664/1675 (40%)	647 (97%)	17 (3%)	0	100	100
1	K	439/1675 (26%)	418 (95%)	21 (5%)	0	100	100
1	L	664/1675 (40%)	652 (98%)	12 (2%)	0	100	100
1	M	439/1675 (26%)	420 (96%)	19 (4%)	0	100	100
2	B	105/228 (46%)	104 (99%)	1 (1%)	0	100	100
2	E	105/228 (46%)	103 (98%)	2 (2%)	0	100	100
2	F	105/228 (46%)	104 (99%)	1 (1%)	0	100	100
2	J	57/228 (25%)	57 (100%)	0	0	100	100
2	N	57/228 (25%)	57 (100%)	0	0	100	100
2	O	57/228 (25%)	57 (100%)	0	0	100	100
All	All	4971/16443 (30%)	4858 (98%)	113 (2%)	0	100	100

There are no Ramachandran outliers to report.

### 5.3.2 Protein sidechains [i](#)

In the following table, the Percentiles column shows the percent sidechain outliers of the chain as a percentile score with respect to all PDB entries followed by that with respect to all EM entries.

The Analysed column shows the number of residues for which the sidechain conformation was analysed, and the total number of residues.

Mol	Chain	Analysed	Rotameric	Outliers	Percentiles	
1	A	356/1470 (24%)	355 (100%)	1 (0%)	92	95
1	C	356/1470 (24%)	356 (100%)	0	100	100
1	D	356/1470 (24%)	355 (100%)	1 (0%)	92	95
1	G	589/1470 (40%)	587 (100%)	2 (0%)	92	95
1	H	406/1470 (28%)	404 (100%)	2 (0%)	88	93
1	I	589/1470 (40%)	586 (100%)	3 (0%)	88	93

*Continued on next page...*

Continued from previous page...

Mol	Chain	Analysed	Rotameric	Outliers	Percentiles	
1	K	406/1470 (28%)	404 (100%)	2 (0%)	88	93
1	L	589/1470 (40%)	589 (100%)	0	100	100
1	M	406/1470 (28%)	404 (100%)	2 (0%)	88	93
2	B	101/182 (56%)	101 (100%)	0	100	100
2	E	101/182 (56%)	101 (100%)	0	100	100
2	F	101/182 (56%)	101 (100%)	0	100	100
2	J	55/182 (30%)	55 (100%)	0	100	100
2	N	55/182 (30%)	55 (100%)	0	100	100
2	O	55/182 (30%)	55 (100%)	0	100	100
All	All	4521/14322 (32%)	4508 (100%)	13 (0%)	92	95

5 of 13 residues with a non-rotameric sidechain are listed below:

Mol	Chain	Res	Type
1	H	772	LEU
1	I	982	THR
1	K	772	LEU
1	I	1411	TYR
1	K	771	GLN

Sometimes sidechains can be flipped to improve hydrogen bonding and reduce clashes. 5 of 30 such sidechains are listed below:

Mol	Chain	Res	Type
1	M	642	HIS
1	I	853	ASN
2	J	152	ASN
1	K	674	ASN
1	G	1460	ASN

### 5.3.3 RNA [i](#)

There are no RNA molecules in this entry.

## 5.4 Non-standard residues in protein, DNA, RNA chains [i](#)

There are no non-standard protein/DNA/RNA residues in this entry.



## 5.5 Carbohydrates [i](#)

There are no monosaccharides in this entry.

## 5.6 Ligand geometry [i](#)

There are no ligands in this entry.

## 5.7 Other polymers [i](#)

There are no such residues in this entry.

## 5.8 Polymer linkage issues [i](#)

There are no chain breaks in this entry.

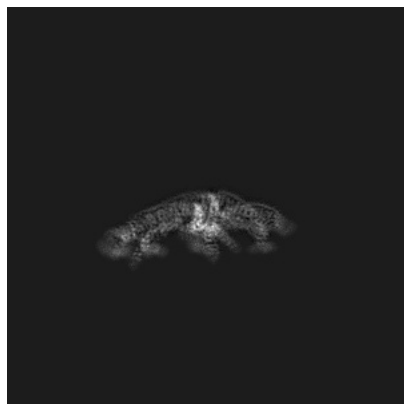
## 6 Map visualisation [i](#)

This section contains visualisations of the EMDB entry EMD-21611. These allow visual inspection of the internal detail of the map and identification of artifacts.

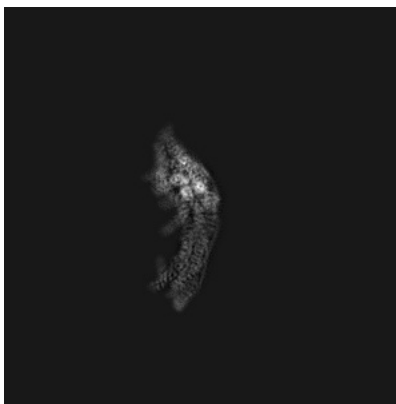
Images derived from a raw map, generated by summing the deposited half-maps, are presented below the corresponding image components of the primary map to allow further visual inspection and comparison with those of the primary map.

### 6.1 Orthogonal projections [i](#)

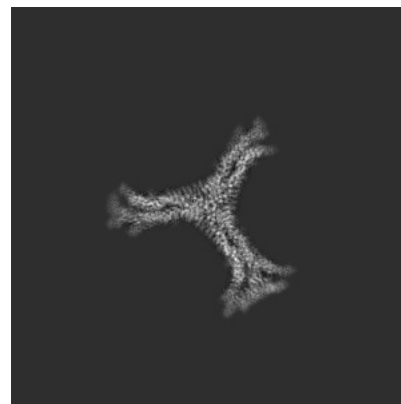
#### 6.1.1 Primary map



X

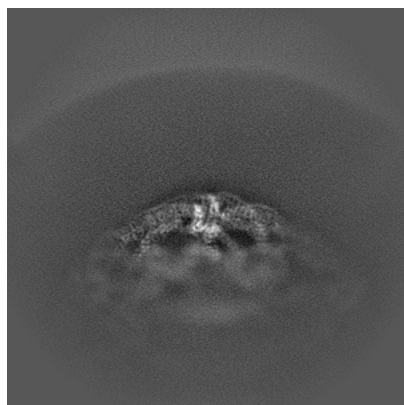


Y

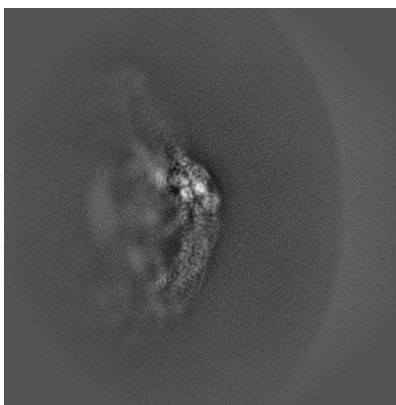


Z

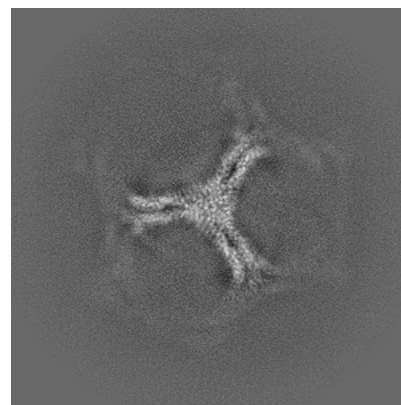
#### 6.1.2 Raw map



X



Y

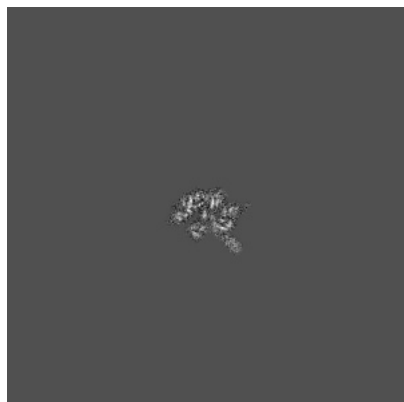


Z

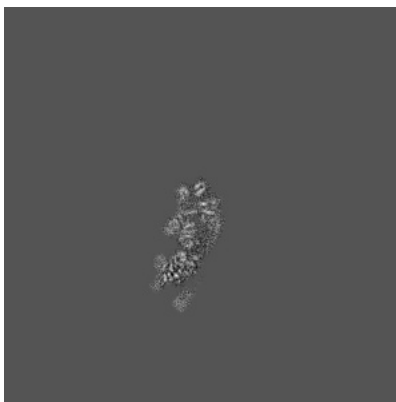
The images above show the map projected in three orthogonal directions.

## 6.2 Central slices [i](#)

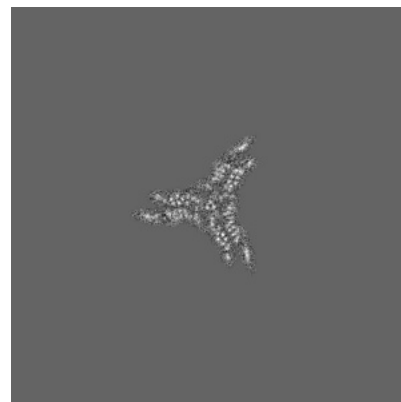
### 6.2.1 Primary map



X Index: 300

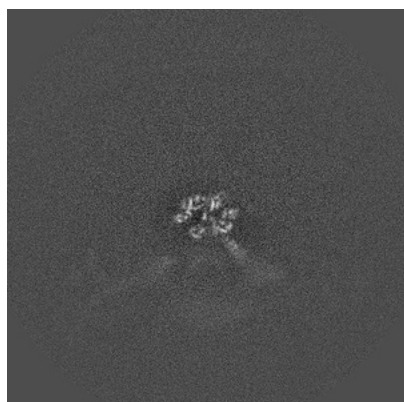


Y Index: 300

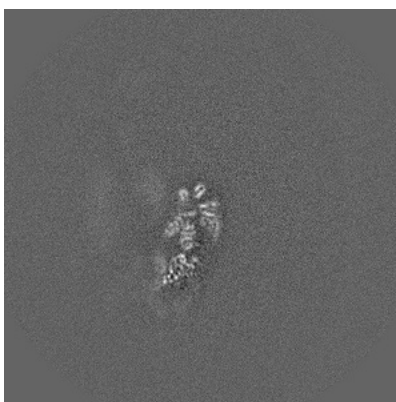


Z Index: 300

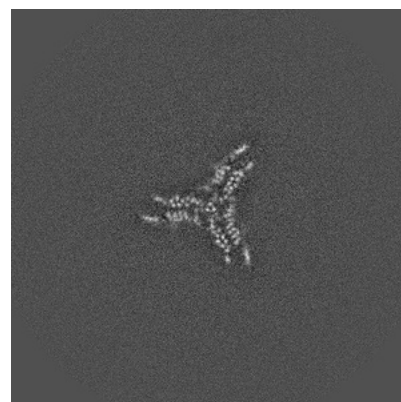
### 6.2.2 Raw map



X Index: 300



Y Index: 300



Z Index: 300

The images above show central slices of the map in three orthogonal directions.

## 6.3 Largest variance slices [i](#)

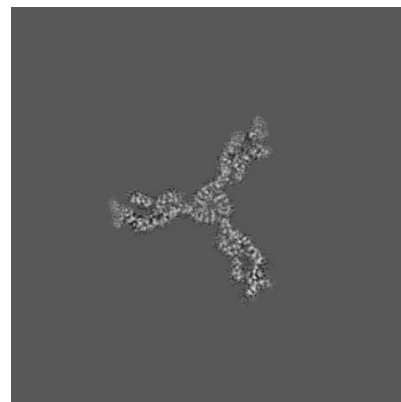
### 6.3.1 Primary map



X Index: 337

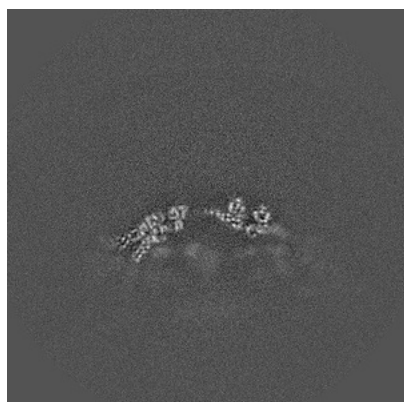


Y Index: 308

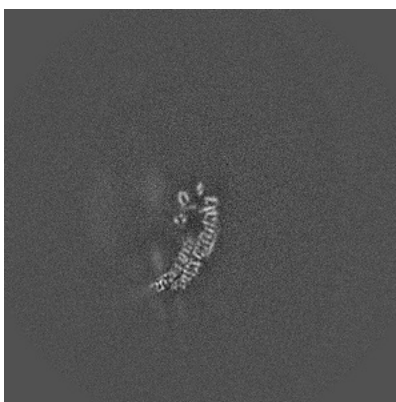


Z Index: 270

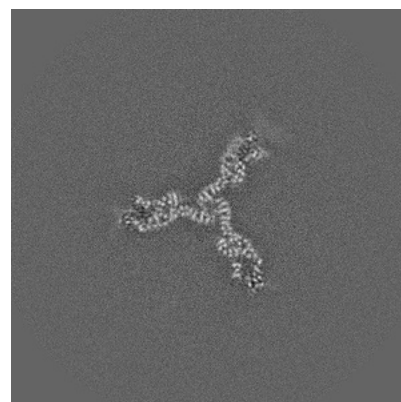
### 6.3.2 Raw map



X Index: 337



Y Index: 308

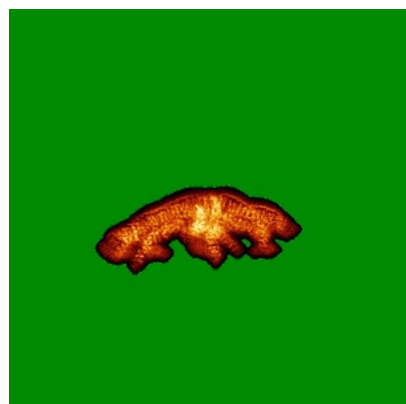


Z Index: 272

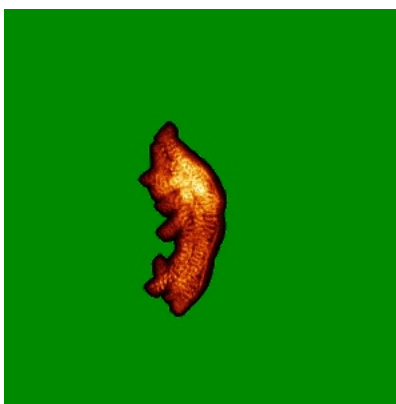
The images above show the largest variance slices of the map in three orthogonal directions.

## 6.4 Orthogonal standard-deviation projections (False-color) [i](#)

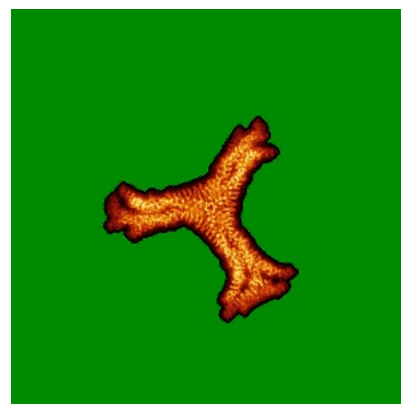
### 6.4.1 Primary map



X

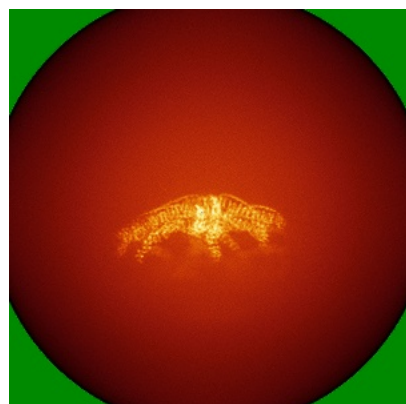


Y

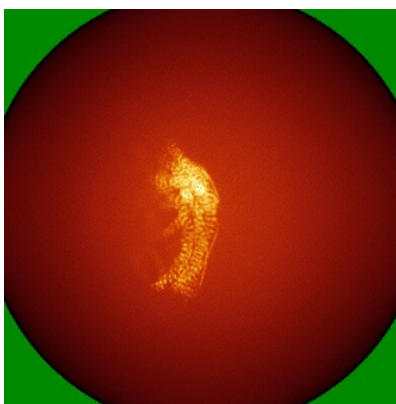


Z

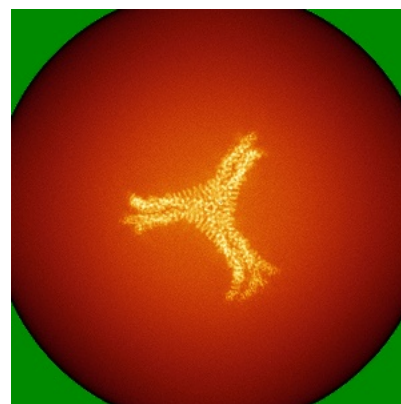
### 6.4.2 Raw map



X



Y

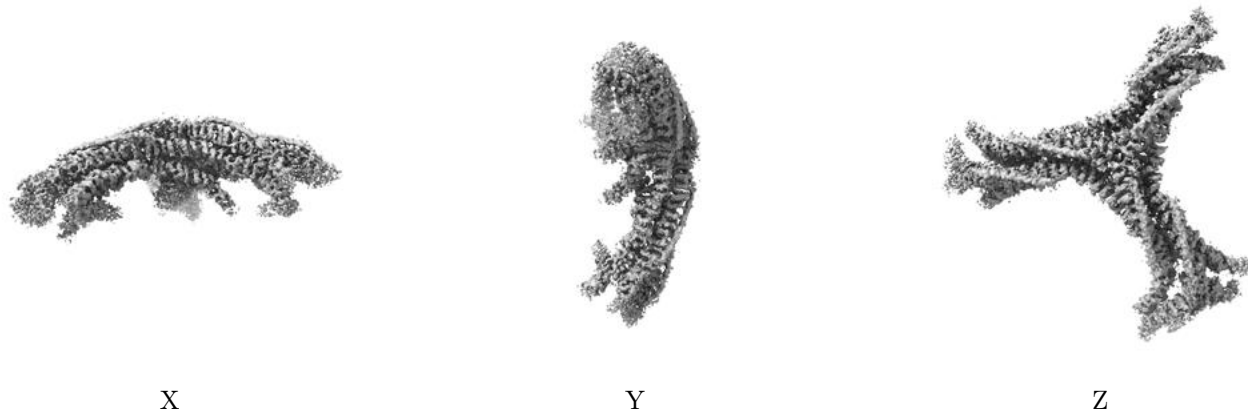


Z

The images above show the map standard deviation projections with false color in three orthogonal directions. Minimum values are shown in green, max in blue, and dark to light orange shades represent small to large values respectively.

## 6.5 Orthogonal surface views [i](#)

### 6.5.1 Primary map



The images above show the 3D surface view of the map at the recommended contour level 4.0. These images, in conjunction with the slice images, may facilitate assessment of whether an appropriate contour level has been provided.

### 6.5.2 Raw map



These images show the 3D surface of the raw map. The raw map's contour level was selected so that its surface encloses the same volume as the primary map does at its recommended contour level.

## 6.6 Mask visualisation [i](#)

This section shows the 3D surface view of the primary map at 50% transparency overlaid with the specified mask at 0% transparency

A mask typically either:

- Encompasses the whole structure
- Separates out a domain, a functional unit, a monomer or an area of interest from a larger structure

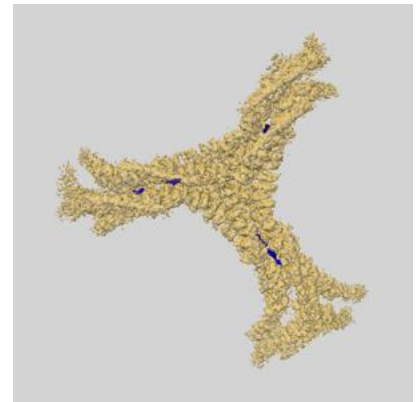
### 6.6.1 emd\_21611\_msk\_1.map [i](#)



X



Y

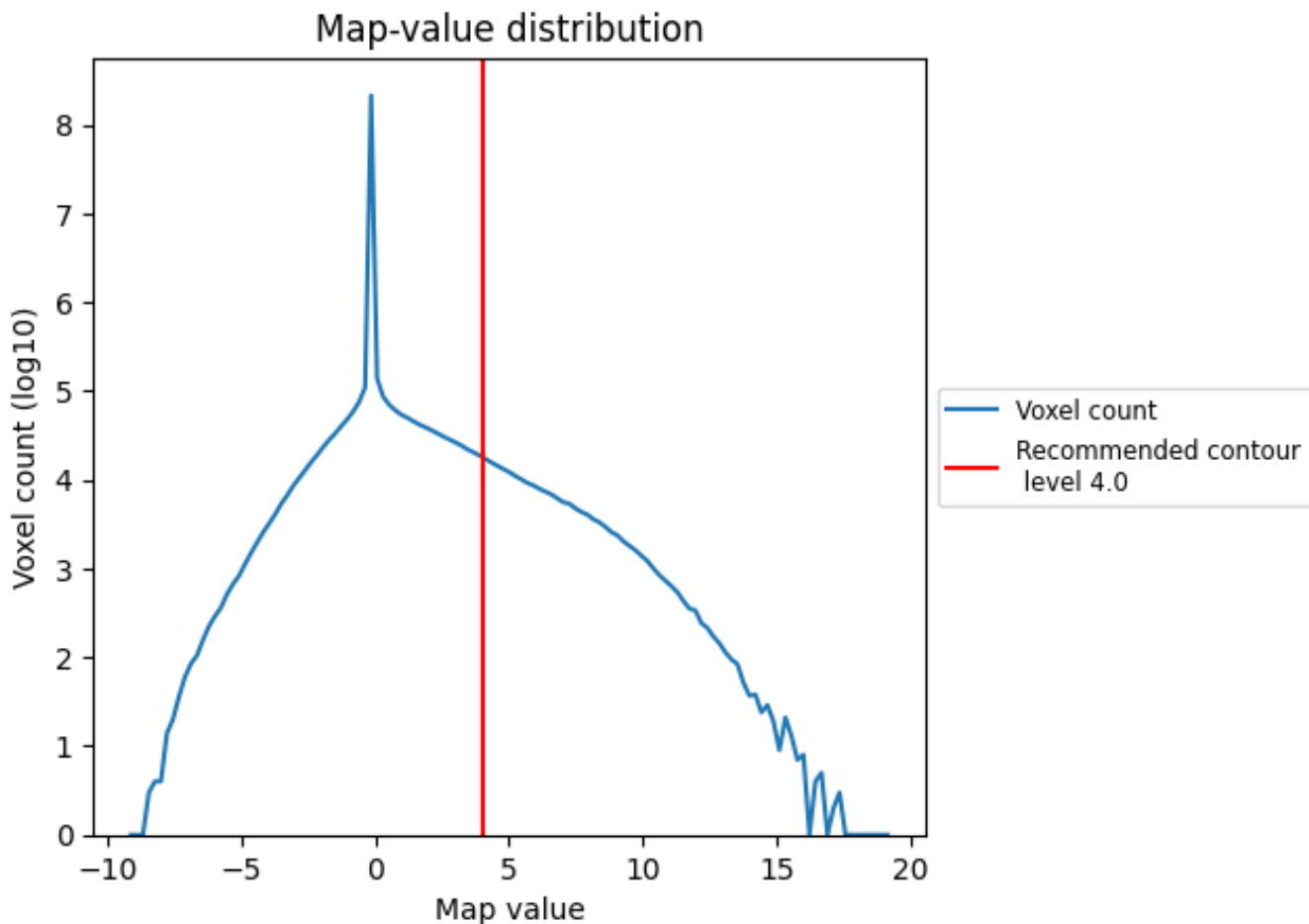


Z

## 7 Map analysis [i](#)

This section contains the results of statistical analysis of the map.

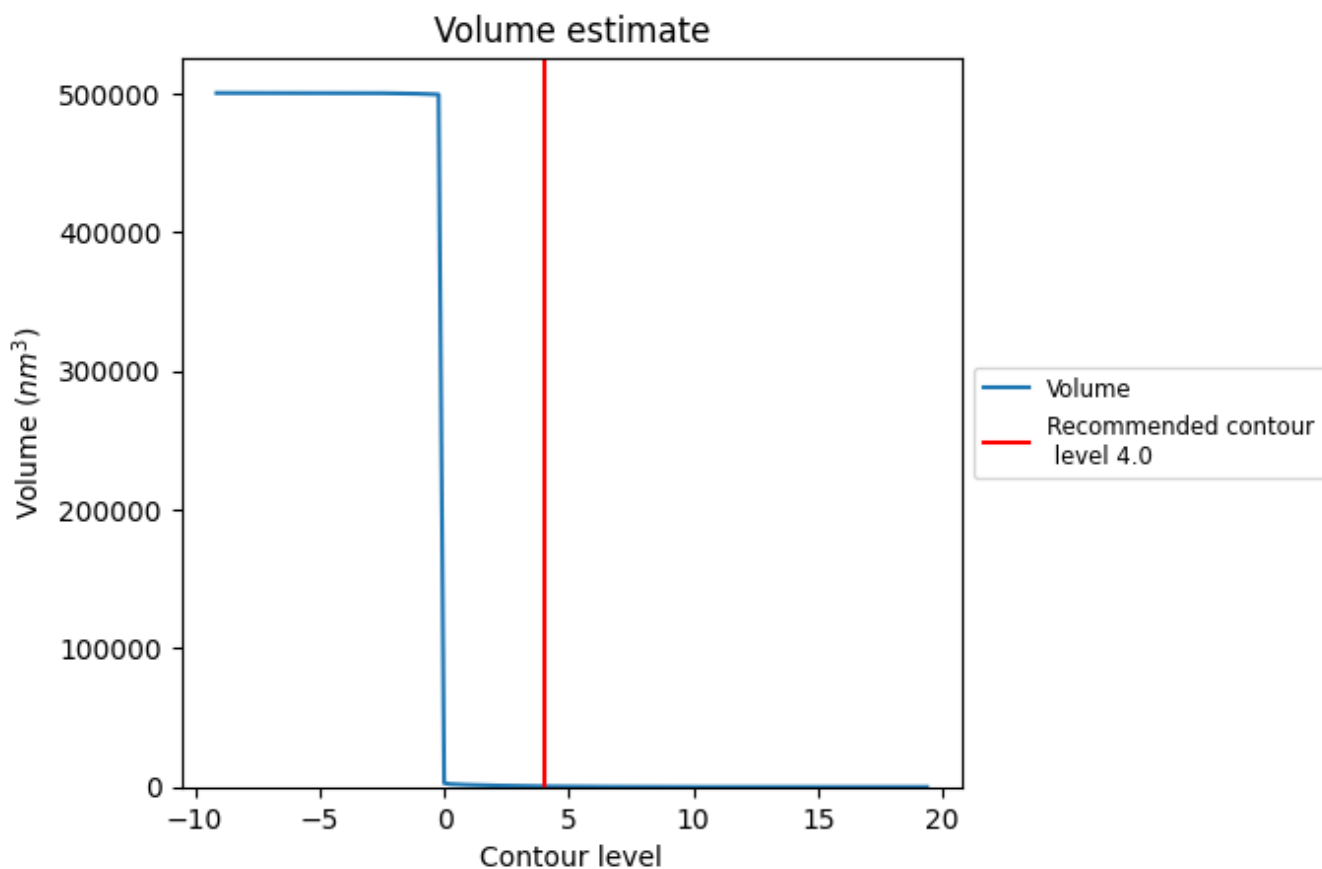
### 7.1 Map-value distribution [i](#)



The map-value distribution is plotted in 128 intervals along the x-axis. The y-axis is logarithmic. A spike in this graph at zero usually indicates that the volume has been masked.



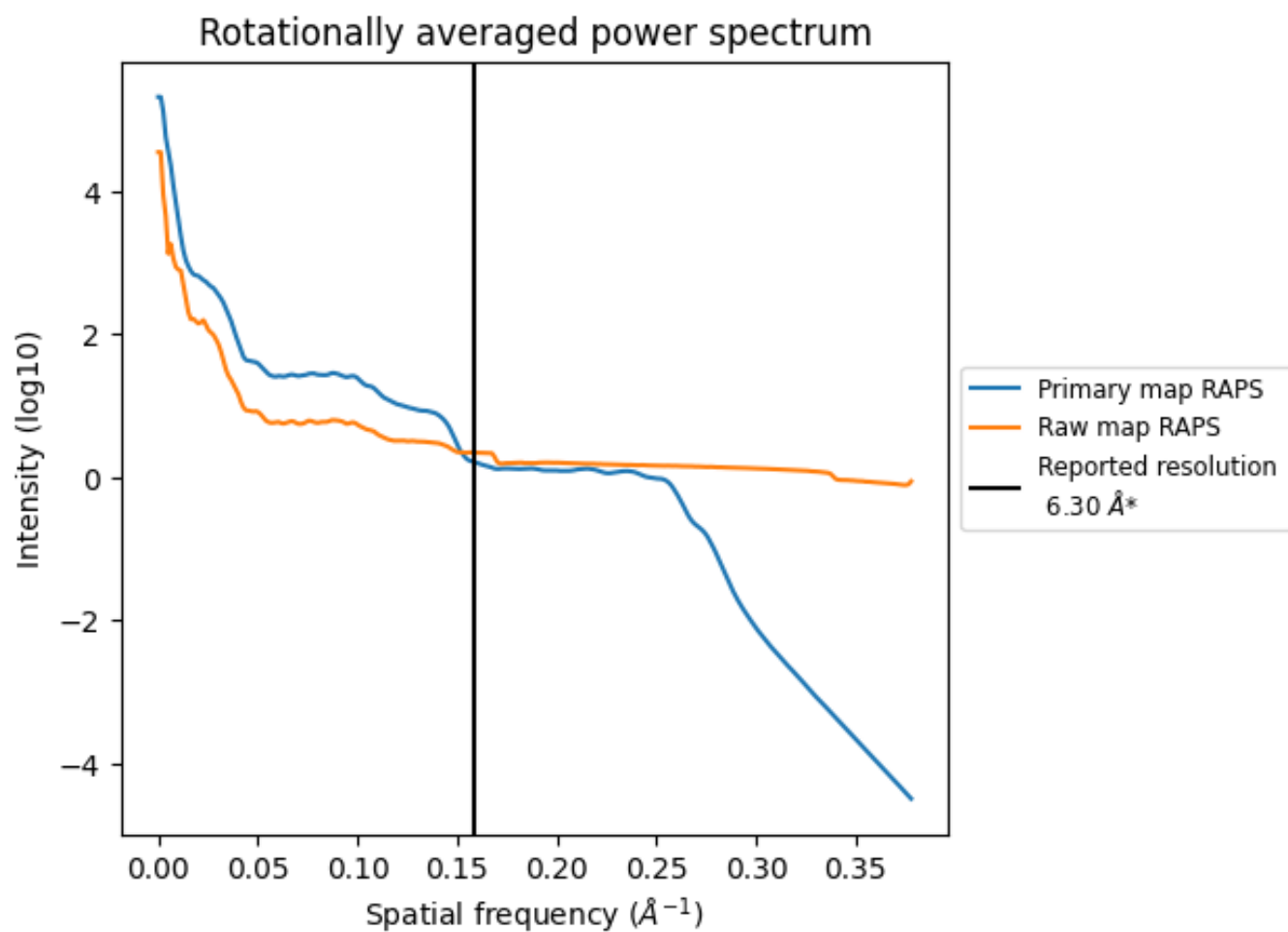
## 7.2 Volume estimate [\(i\)](#)



The volume at the recommended contour level is 471 nm<sup>3</sup>; this corresponds to an approximate mass of 426 kDa.

The volume estimate graph shows how the enclosed volume varies with the contour level. The recommended contour level is shown as a vertical line and the intersection between the line and the curve gives the volume of the enclosed surface at the given level.

### 7.3 Rotationally averaged power spectrum [\(i\)](#)

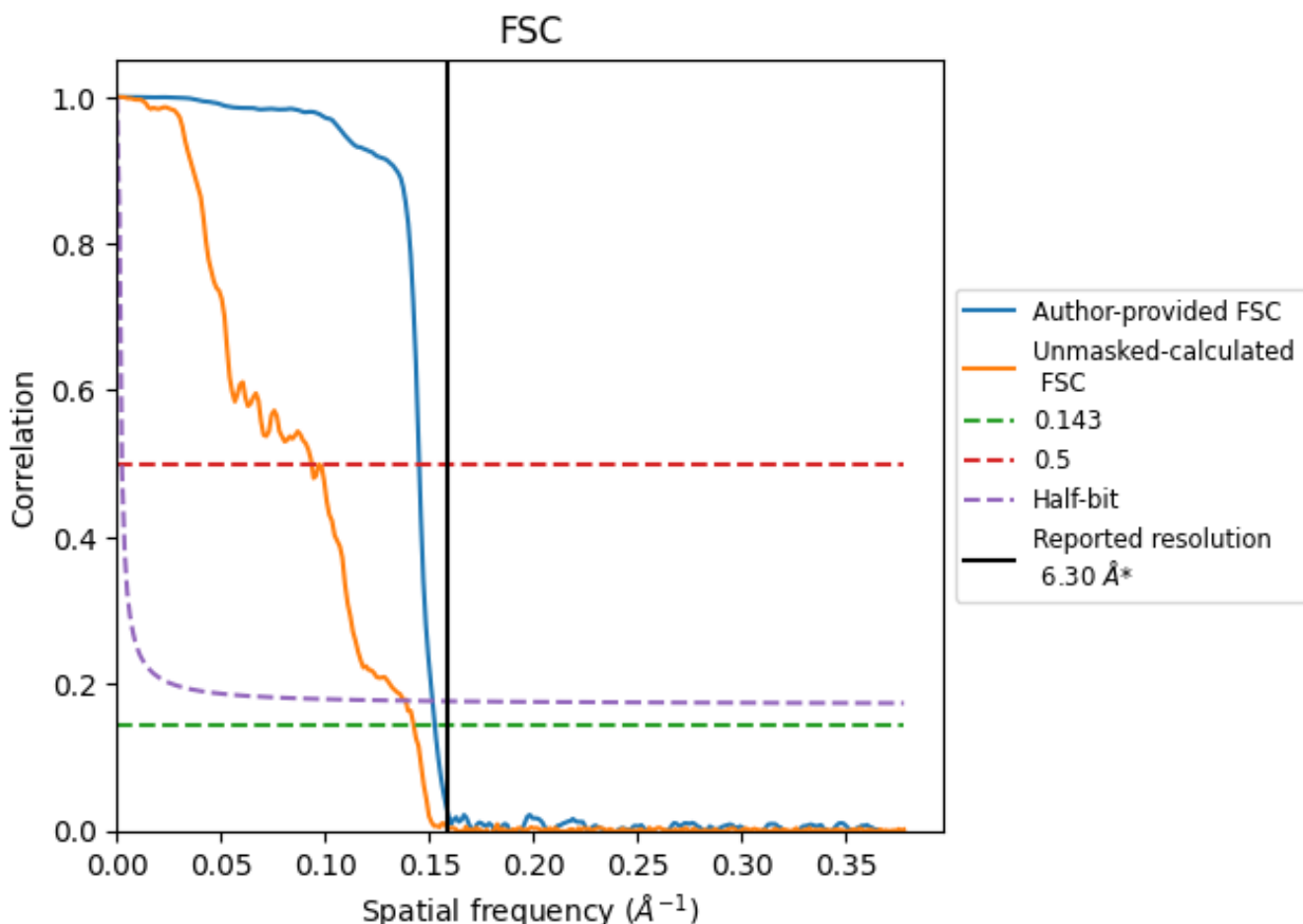


\*Reported resolution corresponds to spatial frequency of 0.159 Å<sup>-1</sup>

## 8 Fourier-Shell correlation [i](#)

Fourier-Shell Correlation (FSC) is the most commonly used method to estimate the resolution of single-particle and subtomogram-averaged maps. The shape of the curve depends on the imposed symmetry, mask and whether or not the two 3D reconstructions used were processed from a common reference. The reported resolution is shown as a black line. A curve is displayed for the half-bit criterion in addition to lines showing the 0.143 gold standard cut-off and 0.5 cut-off.

### 8.1 FSC [i](#)



\*Reported resolution corresponds to spatial frequency of 0.159 Å<sup>-1</sup>

## 8.2 Resolution estimates [i](#)

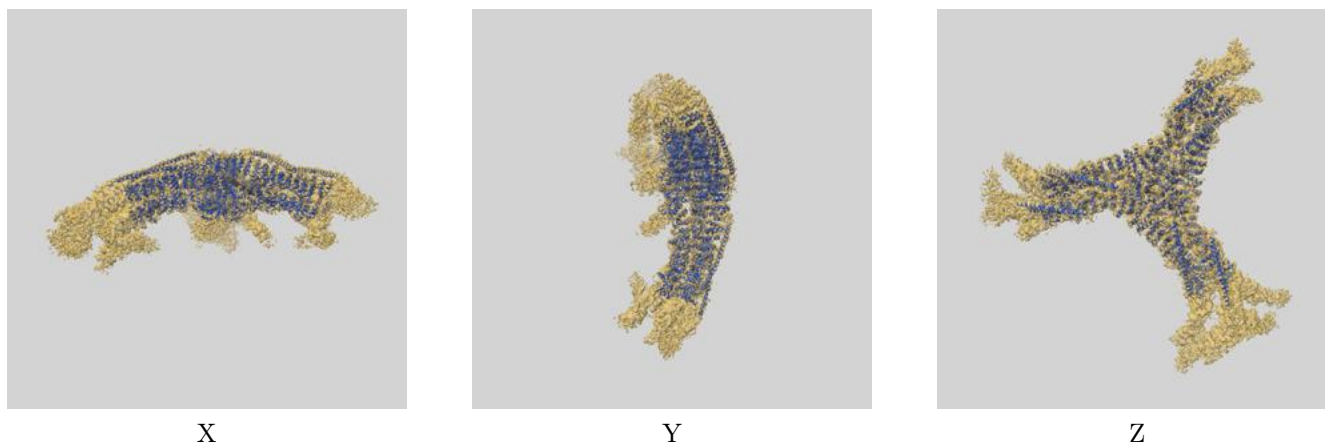
Resolution estimate (Å)	Estimation criterion (FSC cut-off)		
	0.143	0.5	Half-bit
Reported by author	6.30	-	-
Author-provided FSC curve	6.55	6.89	6.60
Unmasked-calculated*	7.02	10.70	7.21

\*Resolution estimate based on FSC curve calculated by comparison of deposited half-maps. The value from deposited half-maps intersecting FSC 0.143 CUT-OFF 7.02 differs from the reported value 6.3 by more than 10 %

## 9 Map-model fit [i](#)

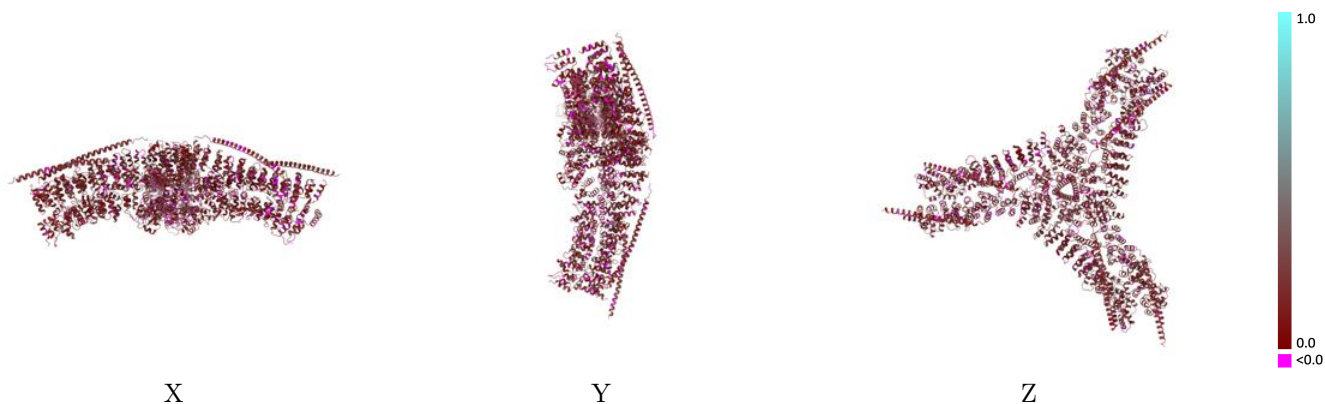
This section contains information regarding the fit between EMDB map EMD-21611 and PDB model 6WCJ. Per-residue inclusion information can be found in section [3](#) on page [5](#).

### 9.1 Map-model overlay [i](#)



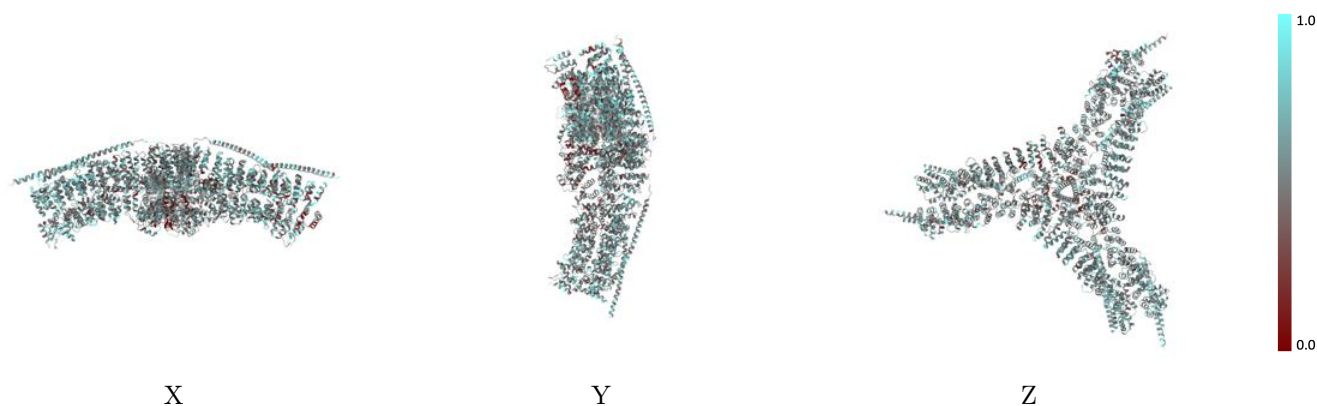
The images above show the 3D surface view of the map at the recommended contour level 4.0 at 50% transparency in yellow overlaid with a ribbon representation of the model coloured in blue. These images allow for the visual assessment of the quality of fit between the atomic model and the map.

## 9.2 Q-score mapped to coordinate model [i](#)



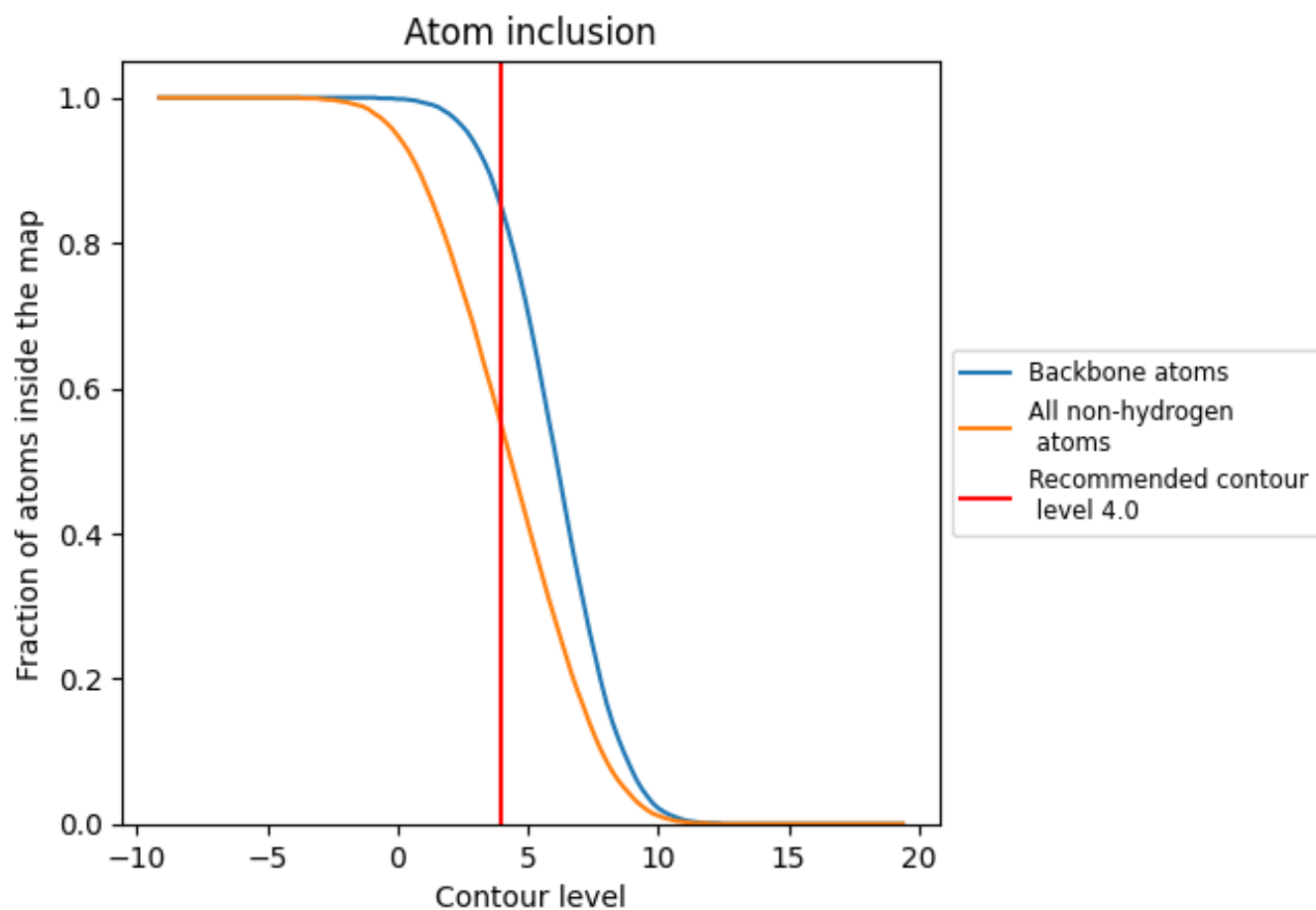
The images above show the model with each residue coloured according to its Q-score. This shows their resolvability in the map with higher Q-score values reflecting better resolvability. Please note: Q-score is calculating the resolvability of atoms, and thus high values are only expected at resolutions at which atoms can be resolved. Low Q-score values may therefore be expected for many entries.

## 9.3 Atom inclusion mapped to coordinate model [i](#)



The images above show the model with each residue coloured according to its atom inclusion. This shows to what extent they are inside the map at the recommended contour level (4.0).

































## 9.4 Atom inclusion [i](#)



At the recommended contour level, 85% of all backbone atoms, 55% of all non-hydrogen atoms, are inside the map.

## 9.5 Map-model fit summary [i](#)

The table lists the average atom inclusion at the recommended contour level (4.0) and Q-score for the entire model and for each chain.

Chain	Atom inclusion	Q-score
All	 0.5470	 0.1630
A	 0.5590	 0.1750
B	 0.5380	 0.1830
C	 0.5670	 0.1550
D	 0.5470	 0.1590
E	 0.5320	 0.1420
F	 0.5060	 0.1500
G	 0.5680	 0.1680
H	 0.5190	 0.1620
I	 0.5310	 0.1470
J	 0.5720	 0.1590
K	 0.5040	 0.1600
L	 0.5710	 0.1700
M	 0.5390	 0.1700
N	 0.5980	 0.1770
O	 0.6080	 0.1950

