



Full wwPDB X-ray Structure Validation Report ⓘ

Sep 26, 2023 – 06:28 AM EDT

PDB ID : 5WEA
Title : Human Argonaute2 Helix-7 Mutant
Authors : Schirle, N.T.; Klum, S.M.; MacRae, I.J.
Deposited on : 2017-07-08
Resolution : 3.12 Å(reported)

This is a Full wwPDB X-ray Structure Validation Report for a publicly released PDB entry.

We welcome your comments at validation@mail.wwpdb.org

A user guide is available at

<https://www.wwpdb.org/validation/2017/XrayValidationReportHelp>

with specific help available everywhere you see the ⓘ symbol.

The types of validation reports are described at

<http://www.wwpdb.org/validation/2017/FAQs#types>.

The following versions of software and data (see [references ⓘ](#)) were used in the production of this report:

MolProbity : 4.02b-467
Mogul : 1.8.5 (274361), CSD as541be (2020)
Xtrriage (Phenix) : 1.13
EDS : 2.35.1
Percentile statistics : 20191225.v01 (using entries in the PDB archive December 25th 2019)
Refmac : 5.8.0158
CCP4 : 7.0.044 (Gargrove)
Ideal geometry (proteins) : Engh & Huber (2001)
Ideal geometry (DNA, RNA) : Parkinson et al. (1996)
Validation Pipeline (wwPDB-VP) : 2.35.1

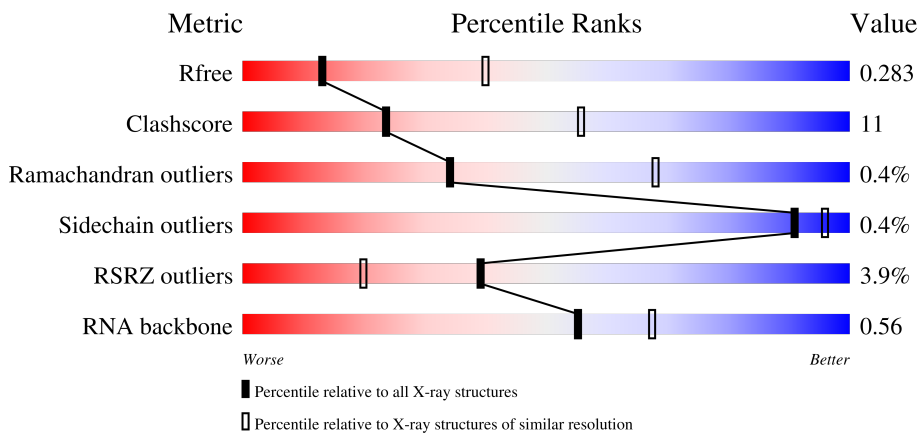
1 Overall quality at a glance i

The following experimental techniques were used to determine the structure:

X-RAY DIFFRACTION

The reported resolution of this entry is 3.12 Å.

Percentile scores (ranging between 0-100) for global validation metrics of the entry are shown in the following graphic. The table shows the number of entries on which the scores are based.



Metric	Whole archive (#Entries)	Similar resolution (#Entries, resolution range(Å))
R_{free}	130704	1292 (3.14-3.10)
Clashscore	141614	1389 (3.14-3.10)
Ramachandran outliers	138981	1337 (3.14-3.10)
Sidechain outliers	138945	1337 (3.14-3.10)
RSRZ outliers	127900	1260 (3.14-3.10)
RNA backbone	3102	1134 (3.44-2.80)

The table below summarises the geometric issues observed across the polymeric chains and their fit to the electron density. The red, orange, yellow and green segments of the lower bar indicate the fraction of residues that contain outliers for ≥ 3 , 2, 1 and 0 types of geometric quality criteria respectively. A grey segment represents the fraction of residues that are not modelled. The numeric value for each fraction is indicated below the corresponding segment, with a dot representing fractions $\leq 5\%$. The upper red bar (where present) indicates the fraction of residues that have poor fit to the electron density. The numeric value is given above the bar.

Mol	Chain	Length	Quality of chain
1	A	859	
2	B	8	

The following table lists non-polymeric compounds, carbohydrate monomers and non-standard residues in protein, DNA, RNA chains that are outliers for geometric or electron-density-fit crite-

ria:

Mol	Type	Chain	Res	Chirality	Geometry	Clashes	Electron density
3	IPH	A	901	-	-	-	X

2 Entry composition [i](#)

There are 4 unique types of molecules in this entry. The entry contains 6340 atoms, of which 0 are hydrogens and 0 are deuteriums.

In the tables below, the ZeroOcc column contains the number of atoms modelled with zero occupancy, the AltConf column contains the number of residues with at least one atom in alternate conformation and the Trace column contains the number of residues modelled with at most 2 atoms.

- Molecule 1 is a protein called Protein argonaute-2.

Mol	Chain	Residues	Atoms					ZeroOcc	AltConf	Trace
			Total	C	N	O	S			
1	A	764	6139	3915	1107	1079	38	0	0	0

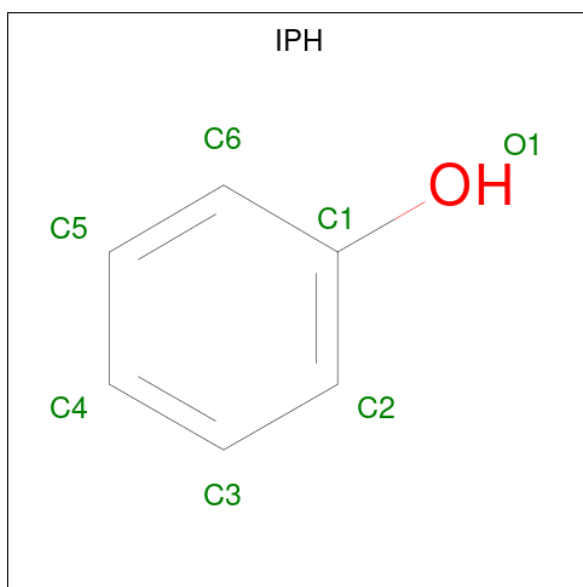
There are 7 discrepancies between the modelled and reference sequences:

Chain	Residue	Modelled	Actual	Comment	Reference
A	364	ALA	MET	engineered mutation	UNP Q9UKV8
A	365	ALA	ILE	engineered mutation	UNP Q9UKV8
A	387	ASP	SER	engineered mutation	UNP Q9UKV8
A	824	ALA	SER	conflict	UNP Q9UKV8
A	828	ASP	SER	conflict	UNP Q9UKV8
A	831	ASP	SER	conflict	UNP Q9UKV8
A	834	ALA	SER	conflict	UNP Q9UKV8

- Molecule 2 is a RNA chain called RNA (5'-R(P*AP*AP*AP*AP*AP*AP*AP*U)-3').

Mol	Chain	Residues	Atoms					ZeroOcc	AltConf	Trace
			Total	C	N	O	P			
2	B	8	171	76	37	51	7	0	0	0

- Molecule 3 is PHENOL (three-letter code: IPH) (formula: C₆H₆O).



Mol	Chain	Residues	Atoms	ZeroOcc	AltConf
3	A	1	Total C O 7 6 1	0	0

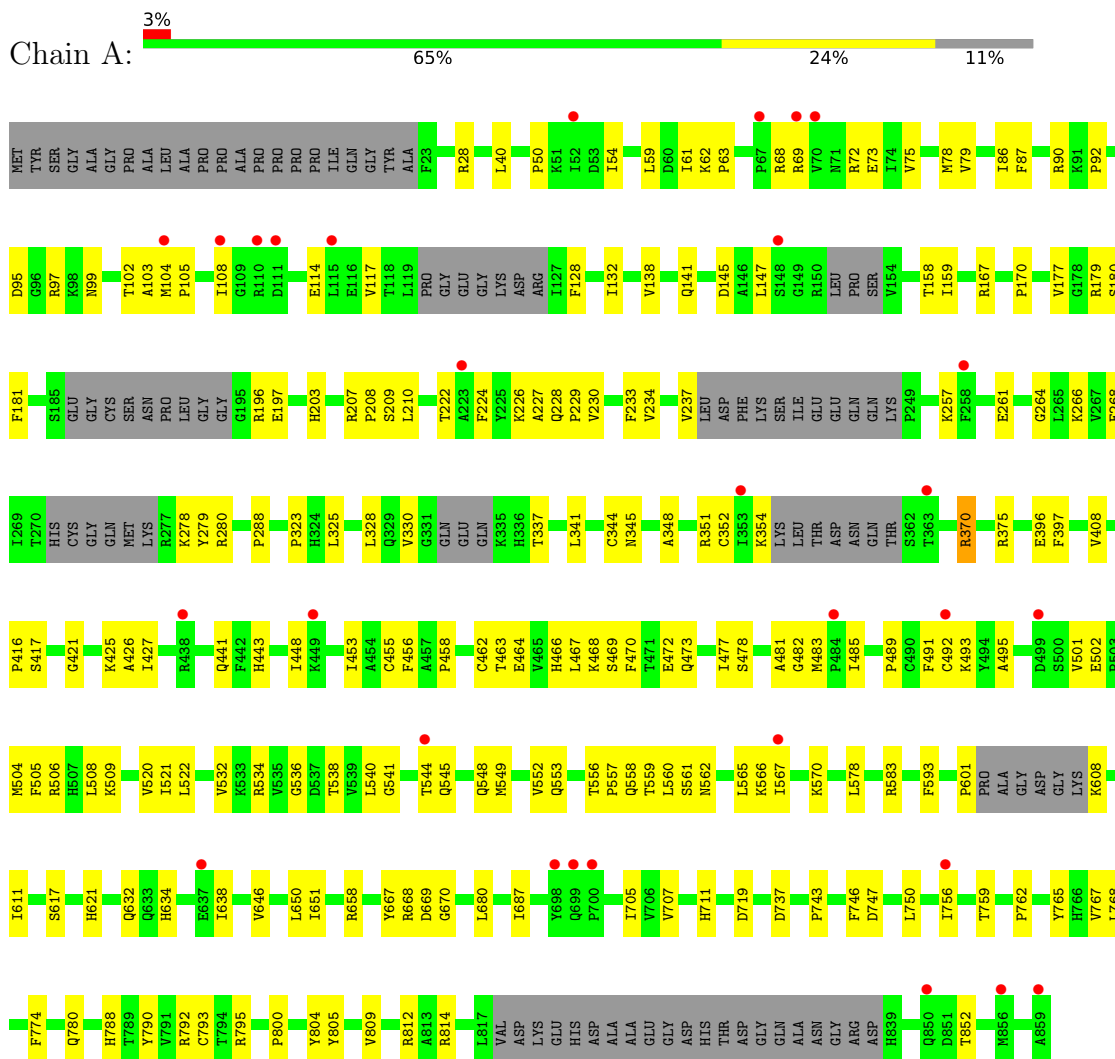
- Molecule 4 is water.

Mol	Chain	Residues	Atoms	ZeroOcc	AltConf
4	A	23	Total O 23 23	0	0

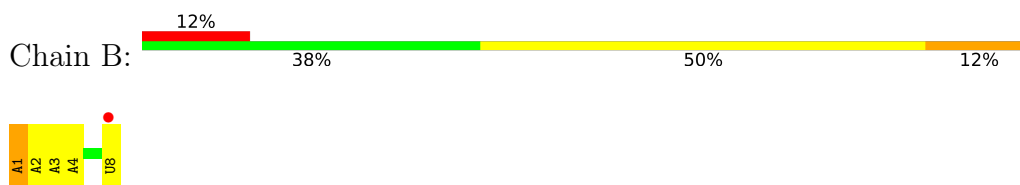
3 Residue-property plots [i](#)

These plots are drawn for all protein, RNA, DNA and oligosaccharide chains in the entry. The first graphic for a chain summarises the proportions of the various outlier classes displayed in the second graphic. The second graphic shows the sequence view annotated by issues in geometry and electron density. Residues are color-coded according to the number of geometric quality criteria for which they contain at least one outlier: green = 0, yellow = 1, orange = 2 and red = 3 or more. A red dot above a residue indicates a poor fit to the electron density ($RSRZ > 2$). Stretches of 2 or more consecutive residues without any outlier are shown as a green connector. Residues present in the sample, but not in the model, are shown in grey.

- Molecule 1: Protein argonaute-2



- Molecule 2: RNA (5'-R(P*AP*AP*AP*AP*AP*AP*AP*U)-3')



4 Data and refinement statistics

Property	Value	Source
Space group	P 1 21 1	Depositor
Cell constants a, b, c, α , β , γ	63.26Å 107.88Å 68.72Å 90.00° 107.46° 90.00°	Depositor
Resolution (Å)	65.56 – 3.12 65.56 – 3.12	Depositor EDS
% Data completeness (in resolution range)	94.2 (65.56-3.12) 94.1 (65.56-3.12)	Depositor EDS
R_{merge}	0.11	Depositor
R_{sym}	(Not available)	Depositor
$\langle I/\sigma(I) \rangle$ ¹	1.87 (at 3.13Å)	Xtrriage
Refinement program	PHENIX 1.10.1_2155	Depositor
R, R_{free}	0.252 , 0.282 0.253 , 0.283	Depositor DCC
R_{free} test set	739 reflections (4.99%)	wwPDB-VP
Wilson B-factor (Å ²)	64.4	Xtrriage
Anisotropy	0.805	Xtrriage
Bulk solvent k_{sol} (e/Å ³), B_{sol} (Å ²)	0.30 , 74.1	EDS
L-test for twinning ²	$\langle L \rangle = 0.49$, $\langle L^2 \rangle = 0.32$	Xtrriage
Estimated twinning fraction	No twinning to report.	Xtrriage
F_o, F_c correlation	0.88	EDS
Total number of atoms	6340	wwPDB-VP
Average B, all atoms (Å ²)	76.0	wwPDB-VP

Xtrriage's analysis on translational NCS is as follows: *The largest off-origin peak in the Patterson function is 4.90% of the height of the origin peak. No significant pseudotranslation is detected.*

¹Intensities estimated from amplitudes.

²Theoretical values of $\langle |L| \rangle$, $\langle L^2 \rangle$ for acentric reflections are 0.5, 0.333 respectively for untwinned datasets, and 0.375, 0.2 for perfectly twinned datasets.

5 Model quality [i](#)

5.1 Standard geometry [i](#)

Bond lengths and bond angles in the following residue types are not validated in this section: IPH

The Z score for a bond length (or angle) is the number of standard deviations the observed value is removed from the expected value. A bond length (or angle) with $|Z| > 5$ is considered an outlier worth inspection. RMSZ is the root-mean-square of all Z scores of the bond lengths (or angles).

Mol	Chain	Bond lengths		Bond angles	
		RMSZ	# $ Z > 5$	RMSZ	# $ Z > 5$
1	A	0.24	0/6281	0.43	0/8495
2	B	0.81	1/186 (0.5%)	0.74	0/281
All	All	0.27	1/6467 (0.0%)	0.44	0/8776

All (1) bond length outliers are listed below:

Mol	Chain	Res	Type	Atoms	Z	Observed(Å)	Ideal(Å)
2	B	1	A	OP3-P	-10.55	1.48	1.61

There are no bond angle outliers.

There are no chirality outliers.

There are no planarity outliers.

5.2 Too-close contacts [i](#)

In the following table, the Non-H and H(model) columns list the number of non-hydrogen atoms and hydrogen atoms in the chain respectively. The H(added) column lists the number of hydrogen atoms added and optimized by MolProbity. The Clashes column lists the number of clashes within the asymmetric unit, whereas Symm-Clashes lists symmetry-related clashes.

Mol	Chain	Non-H	H(model)	H(added)	Clashes	Symm-Clashes
1	A	6139	0	6202	135	0
2	B	171	0	82	10	0
3	A	7	0	6	2	0
4	A	23	0	0	1	0
All	All	6340	0	6290	141	0

The all-atom clashscore is defined as the number of clashes found per 1000 atoms (including hydrogen atoms). The all-atom clashscore for this structure is 11.

All (141) close contacts within the same asymmetric unit are listed below, sorted by their clash magnitude.

Atom-1	Atom-2	Interatomic distance (Å)	Clash overlap (Å)
1:A:90:ARG:HE	1:A:104:MET:HB2	1.44	0.81
2:B:8:U:O4'	2:B:8:U:C3'	2.34	0.75
2:B:8:U:C2'	2:B:8:U:N1	2.52	0.72
2:B:8:U:O4'	2:B:8:U:C2'	2.38	0.72
1:A:549:MET:O	1:A:553:GLN:NE2	2.24	0.71
1:A:325:LEU:HD23	1:A:341:LEU:HD12	1.75	0.69
1:A:478:SER:OG	1:A:483:MET:O	2.11	0.69
1:A:95:ASP:HB2	1:A:99:ASN:HB2	1.76	0.68
1:A:520:VAL:HG11	1:A:532:VAL:HG11	1.80	0.64
1:A:556:THR:HG23	1:A:558:GLN:H	1.63	0.63
1:A:62:LYS:NZ	1:A:114:GLU:OE1	2.32	0.63
1:A:680:LEU:HD22	1:A:768:LEU:HB3	1.80	0.63
1:A:705:ILE:HG12	1:A:767:VAL:HG22	1.82	0.62
1:A:72:ARG:NH2	1:A:95:ASP:O	2.33	0.61
1:A:583:ARG:NH1	1:A:621:HIS:O	2.34	0.61
1:A:167:ARG:NH1	1:A:179:ARG:O	2.34	0.60
1:A:222:THR:HG21	1:A:351:ARG:HE	1.67	0.60
2:B:8:U:O4'	2:B:8:U:N1	2.35	0.59
1:A:196:ARG:NE	1:A:352:CYS:SG	2.73	0.59
1:A:608:LYS:O	1:A:634:HIS:ND1	2.32	0.59
1:A:227:ALA:HB2	1:A:348:ALA:HB2	1.84	0.59
1:A:750:LEU:HB3	1:A:765:TYR:HE2	1.67	0.58
1:A:668:ARG:NH1	1:A:669:ASP:O	2.35	0.58
1:A:812:ARG:NH2	4:A:1005:HOH:O	2.36	0.58
1:A:117:VAL:HG22	1:A:128:PHE:H	1.70	0.57
1:A:534:ARG:O	1:A:538:THR:OG1	2.21	0.57
1:A:462:CYS:SG	1:A:463:THR:N	2.78	0.56
1:A:491:PHE:CZ	1:A:508:LEU:HD22	2.41	0.56
1:A:578:LEU:HD12	1:A:578:LEU:H	1.68	0.56
1:A:234:VAL:HG21	1:A:341:LEU:HD13	1.88	0.56
1:A:509:LYS:HD3	1:A:540:LEU:HD23	1.88	0.56
1:A:416:PRO:HD2	1:A:788:HIS:CE1	2.41	0.56
1:A:632:GLN:NE2	1:A:638:ILE:O	2.39	0.55
1:A:711:HIS:NE2	1:A:762:PRO:O	2.30	0.55
1:A:469:SER:HA	1:A:472:GLU:HB2	1.90	0.54
1:A:330:VAL:O	1:A:337:THR:OG1	2.26	0.53
1:A:108:ILE:HG21	1:A:132:ILE:HG22	1.91	0.53
1:A:562:ASN:HA	1:A:565:LEU:HD12	1.90	0.53
1:A:441:GLN:HB2	1:A:482:GLY:HA3	1.91	0.53
1:A:455:CYS:HA	1:A:521:ILE:HB	1.90	0.52

Continued on next page...

Continued from previous page...

Atom-1	Atom-2	Interatomic distance (Å)	Clash overlap (Å)
1:A:593:PHE:H	1:A:617:SER:HB3	1.74	0.52
1:A:504:MET:HG3	1:A:508:LEU:HD21	1.91	0.52
1:A:417:SER:HB3	1:A:427:ILE:HG23	1.92	0.52
1:A:421:GLY:HA3	1:A:443:HIS:HA	1.92	0.52
1:A:601:PRO:HB3	1:A:814:ARG:HH22	1.74	0.52
1:A:138:VAL:HG13	1:A:158:THR:HG22	1.93	0.51
2:B:8:U:C2'	2:B:8:U:C6	2.94	0.51
1:A:210:LEU:HA	1:A:743:PRO:HB3	1.93	0.50
1:A:159:ILE:HD13	1:A:208:PRO:HG3	1.94	0.50
1:A:237:VAL:HG11	1:A:261:GLU:HG3	1.93	0.50
1:A:560:LEU:HD12	1:A:561:SER:N	2.27	0.50
1:A:117:VAL:HG21	1:A:128:PHE:HD2	1.77	0.50
1:A:50:PRO:HG3	1:A:397:PHE:O	2.12	0.50
1:A:180:SER:HA	1:A:203:HIS:HA	1.94	0.49
1:A:40:LEU:HB2	1:A:408:VAL:HG23	1.94	0.49
1:A:68:ARG:HD3	1:A:97:ARG:HE	1.77	0.49
1:A:370:ARG:HE	1:A:375:ARG:HA	1.77	0.49
1:A:75:VAL:HA	1:A:78:MET:HG2	1.95	0.48
1:A:522:LEU:O	1:A:548:GLN:HA	2.13	0.48
1:A:611:ILE:HD12	1:A:814:ARG:HG2	1.94	0.48
1:A:545:GLN:NE2	2:B:1:A:OP3	2.45	0.48
1:A:197:GLU:N	1:A:224:PHE:O	2.47	0.48
1:A:790:TYR:OH	1:A:792:ARG:NH1	2.40	0.48
1:A:69:ARG:O	1:A:73:GLU:HG2	2.12	0.48
1:A:477:ILE:HG13	1:A:560:LEU:HD13	1.96	0.48
1:A:505:PHE:CZ	1:A:536:GLY:HA2	2.49	0.48
1:A:264:GLY:O	1:A:280:ARG:NH1	2.47	0.47
1:A:707:VAL:HG12	1:A:765:TYR:HD1	1.78	0.47
1:A:651:ILE:HA	3:A:901:IPH:H3	1.96	0.47
1:A:737:ASP:OD1	1:A:780:GLN:NE2	2.47	0.47
1:A:506:ARG:HD2	1:A:540:LEU:HD21	1.96	0.47
1:A:478:SER:HA	1:A:481:ALA:HB3	1.96	0.47
1:A:229:PRO:HA	1:A:345:ASN:HA	1.95	0.47
1:A:266:LYS:HE3	1:A:278:LYS:HD2	1.97	0.47
1:A:750:LEU:HB3	1:A:765:TYR:CE2	2.50	0.46
1:A:453:ILE:HD12	1:A:489:PRO:HB3	1.97	0.46
1:A:226:LYS:HD3	1:A:228:GLN:HE21	1.80	0.46
1:A:491:PHE:CD1	1:A:493:LYS:HG2	2.50	0.46
1:A:501:VAL:HG11	1:A:532:VAL:HG22	1.97	0.46
1:A:521:ILE:HD13	1:A:552:VAL:HG11	1.98	0.46
1:A:196:ARG:HH21	1:A:354:LYS:HB3	1.81	0.46

Continued on next page...

Continued from previous page...

Atom-1	Atom-2	Interatomic distance (Å)	Clash overlap (Å)
1:A:103:ALA:HB2	1:A:396:GLU:HG3	1.98	0.45
1:A:104:MET:HB3	1:A:105:PRO:HD2	1.98	0.45
1:A:167:ARG:HD3	1:A:181:PHE:CZ	2.52	0.45
1:A:658:ARG:O	1:A:658:ARG:HG2	2.15	0.45
1:A:222:THR:HB	1:A:224:PHE:HE1	1.82	0.45
2:B:3:A:H2'	2:B:4:A:C8	2.52	0.45
1:A:28:ARG:HA	1:A:746:PHE:HB2	1.99	0.45
1:A:257:LYS:O	1:A:261:GLU:HG2	2.17	0.45
1:A:79:VAL:HA	1:A:87:PHE:CE2	2.52	0.45
1:A:279:TYR:HB3	1:A:330:VAL:HB	1.99	0.45
1:A:375:ARG:HD2	1:A:759:THR:HG21	1.99	0.45
1:A:54:ILE:HB	1:A:138:VAL:HB	1.99	0.45
1:A:473:GLN:O	1:A:477:ILE:HG12	2.17	0.45
1:A:502:GLU:O	1:A:506:ARG:HG2	2.17	0.44
1:A:268:GLU:O	1:A:344:CYS:HA	2.18	0.44
1:A:467:LEU:HD23	1:A:492:CYS:SG	2.57	0.44
1:A:541:GLY:HA2	1:A:852:THR:HG23	1.99	0.44
1:A:456:PHE:HA	1:A:495:ALA:O	2.18	0.44
1:A:328:LEU:HD13	1:A:341:LEU:HD22	1.99	0.44
1:A:667:TYR:CE2	1:A:800:PRO:HG2	2.53	0.44
1:A:793:CYS:HB3	2:B:3:A:O2'	2.18	0.44
1:A:458:PRO:O	1:A:462:CYS:N	2.50	0.44
1:A:59:LEU:HB3	1:A:61:ILE:HD11	2.00	0.44
1:A:790:TYR:CZ	1:A:792:ARG:HD3	2.53	0.43
1:A:63:PRO:HD2	1:A:128:PHE:CE1	2.53	0.43
1:A:28:ARG:NH2	1:A:747:ASP:OD1	2.51	0.43
1:A:669:ASP:OD1	1:A:670:GLY:N	2.52	0.43
1:A:707:VAL:HG12	1:A:765:TYR:CD1	2.54	0.43
1:A:92:PRO:HB3	1:A:102:THR:HG22	2.01	0.43
1:A:650:LEU:O	3:A:901:IPH:H4	2.19	0.43
1:A:147:LEU:HD22	1:A:209:SER:O	2.19	0.43
1:A:544:THR:O	1:A:570:LYS:NZ	2.43	0.43
1:A:448:ILE:HB	1:A:485:ILE:HD12	2.00	0.43
1:A:557:PRO:HA	1:A:560:LEU:HD11	2.01	0.43
1:A:805:TYR:O	1:A:809:VAL:HG23	2.19	0.42
1:A:177:VAL:HG21	1:A:224:PHE:HZ	1.85	0.42
1:A:441:GLN:HB2	1:A:482:GLY:CA	2.49	0.42
1:A:170:PRO:HB2	1:A:181:PHE:CZ	2.55	0.42
1:A:478:SER:OG	1:A:485:ILE:HG12	2.20	0.42
1:A:646:VAL:HG11	1:A:687:ILE:HG13	2.01	0.42
1:A:790:TYR:CE2	1:A:792:ARG:HB2	2.54	0.42

Continued on next page...

Continued from previous page...

Atom-1	Atom-2	Interatomic distance (Å)	Clash overlap (Å)
1:A:469:SER:O	1:A:473:GLN:HG2	2.19	0.42
1:A:466:HIS:O	1:A:470:PHE:N	2.33	0.42
1:A:566:LYS:HE2	1:A:566:LYS:HB3	1.86	0.42
1:A:86:ILE:HG13	1:A:87:PHE:N	2.35	0.41
1:A:467:LEU:HA	1:A:470:PHE:HB3	2.00	0.41
1:A:207:ARG:HA	1:A:208:PRO:HD3	1.95	0.41
1:A:545:GLN:HG2	1:A:567:ILE:HD11	2.02	0.41
1:A:556:THR:HG22	1:A:559:THR:HG23	2.02	0.41
1:A:230:VAL:HA	1:A:233:PHE:HB3	2.02	0.41
1:A:477:ILE:O	1:A:481:ALA:N	2.51	0.41
1:A:559:THR:HG22	2:B:2:A:C6	2.56	0.41
1:A:288:PRO:HB2	1:A:323:PRO:O	2.21	0.40
1:A:464:GLU:O	1:A:468:LYS:N	2.42	0.40
1:A:477:ILE:HG13	1:A:560:LEU:CD1	2.50	0.40
1:A:756:ILE:HD11	1:A:795:ARG:CZ	2.50	0.40
1:A:141:GLN:O	1:A:145:ASP:N	2.52	0.40
1:A:226:LYS:HD3	1:A:228:GLN:NE2	2.36	0.40
1:A:506:ARG:HA	1:A:540:LEU:HD21	2.04	0.40
1:A:559:THR:HG22	2:B:2:A:C5	2.56	0.40

There are no symmetry-related clashes.

5.3 Torsion angles [i](#)

5.3.1 Protein backbone [i](#)

In the following table, the Percentiles column shows the percent Ramachandran outliers of the chain as a percentile score with respect to all X-ray entries followed by that with respect to entries of similar resolution.

The Analysed column shows the number of residues for which the backbone conformation was analysed, and the total number of residues.

Mol	Chain	Analysed	Favoured	Allowed	Outliers	Percentiles
1	A	744/859 (87%)	701 (94%)	40 (5%)	3 (0%)	34 68

All (3) Ramachandran outliers are listed below:

Mol	Chain	Res	Type
1	A	370	ARG
1	A	426	ALA

Continued on next page...

Continued from previous page...

Mol	Chain	Res	Type
1	A	425	LYS

5.3.2 Protein sidechains [i](#)

In the following table, the Percentiles column shows the percent sidechain outliers of the chain as a percentile score with respect to all X-ray entries followed by that with respect to entries of similar resolution.

The Analysed column shows the number of residues for which the sidechain conformation was analysed, and the total number of residues.

Mol	Chain	Analysed	Rotameric	Outliers	Percentiles
1	A	676/748 (90%)	673 (100%)	3 (0%)	91 96

All (3) residues with a non-rotameric sidechain are listed below:

Mol	Chain	Res	Type
1	A	719	ASP
1	A	774	PHE
1	A	804	TYR

Sometimes sidechains can be flipped to improve hydrogen bonding and reduce clashes. All (2) such sidechains are listed below:

Mol	Chain	Res	Type
1	A	780	GLN
1	A	788	HIS

5.3.3 RNA [i](#)

Mol	Chain	Analysed	Backbone Outliers	Pucker Outliers
2	B	6/8 (75%)	0	0

There are no RNA backbone outliers to report.

There are no RNA pucker outliers to report.

5.4 Non-standard residues in protein, DNA, RNA chains [i](#)

There are no non-standard protein/DNA/RNA residues in this entry.

5.5 Carbohydrates [i](#)

There are no monosaccharides in this entry.

5.6 Ligand geometry [i](#)

1 ligand is modelled in this entry.

In the following table, the Counts columns list the number of bonds (or angles) for which Mogul statistics could be retrieved, the number of bonds (or angles) that are observed in the model and the number of bonds (or angles) that are defined in the Chemical Component Dictionary. The Link column lists molecule types, if any, to which the group is linked. The Z score for a bond length (or angle) is the number of standard deviations the observed value is removed from the expected value. A bond length (or angle) with $|Z| > 2$ is considered an outlier worth inspection. RMSZ is the root-mean-square of all Z scores of the bond lengths (or angles).

Mol	Type	Chain	Res	Link	Bond lengths			Bond angles		
					Counts	RMSZ	# Z > 2	Counts	RMSZ	# Z > 2
3	IPH	A	901	-	7,7,7	0.33	0	8,8,8	0.27	0

In the following table, the Chirals column lists the number of chiral outliers, the number of chiral centers analysed, the number of these observed in the model and the number defined in the Chemical Component Dictionary. Similar counts are reported in the Torsion and Rings columns. '2' means no outliers of that kind were identified.

Mol	Type	Chain	Res	Link	Chirals	Torsions	Rings
3	IPH	A	901	-	-	-	0/1/1/1

There are no bond length outliers.

There are no bond angle outliers.

There are no chirality outliers.

There are no torsion outliers.

There are no ring outliers.

1 monomer is involved in 2 short contacts:

Mol	Chain	Res	Type	Clashes	Symm-Clashes
3	A	901	IPH	2	0

5.7 Other polymers [i](#)

There are no such residues in this entry.

5.8 Polymer linkage issues

There are no chain breaks in this entry.

6 Fit of model and data

6.1 Protein, DNA and RNA chains

In the following table, the column labelled ‘#RSRZ > 2’ contains the number (and percentage) of RSRZ outliers, followed by percent RSRZ outliers for the chain as percentile scores relative to all X-ray entries and entries of similar resolution. The OWAB column contains the minimum, median, 95th percentile and maximum values of the occupancy-weighted average B-factor per residue. The column labelled ‘Q < 0.9’ lists the number of (and percentage) of residues with an average occupancy less than 0.9.

Mol	Chain	Analysed	<RSRZ>	#RSRZ>2	OWAB(Å ²)	Q<0.9
1	A	764/859 (88%)	0.28	29 (3%) 40 20	29, 72, 129, 161	0
2	B	8/8 (100%)	0.47	1 (12%) 3 1	63, 72, 102, 124	0
All	All	772/867 (89%)	0.28	30 (3%) 39 20	29, 72, 129, 161	0

All (30) RSRZ outliers are listed below:

Mol	Chain	Res	Type	RSRZ
1	A	544	THR	7.5
1	A	859	ALA	4.6
1	A	353	ILE	3.9
1	A	484	PRO	3.4
1	A	110	ARG	3.3
1	A	492	CYS	3.2
1	A	363	THR	3.0
1	A	449	LYS	2.9
1	A	850	GLN	2.9
1	A	699	GLN	2.9
1	A	67	PRO	2.8
1	A	756	ILE	2.8
1	A	70	VAL	2.8
1	A	567	ILE	2.7
1	A	115	LEU	2.6
2	B	8	U	2.6
1	A	223	ALA	2.6
1	A	637	GLU	2.6
1	A	499	ASP	2.5
1	A	52	ILE	2.5
1	A	148	SER	2.4
1	A	69	ARG	2.3
1	A	700	PRO	2.3
1	A	438	ARG	2.3

Continued on next page...

Continued from previous page...

Mol	Chain	Res	Type	RSRZ
1	A	104	MET	2.1
1	A	108	ILE	2.1
1	A	111	ASP	2.1
1	A	258	PHE	2.1
1	A	856	MET	2.1
1	A	698	TYR	2.1

6.2 Non-standard residues in protein, DNA, RNA chains [i](#)

There are no non-standard protein/DNA/RNA residues in this entry.

6.3 Carbohydrates [i](#)

There are no monosaccharides in this entry.

6.4 Ligands [i](#)

In the following table, the Atoms column lists the number of modelled atoms in the group and the number defined in the chemical component dictionary. The B-factors column lists the minimum, median, 95th percentile and maximum values of B factors of atoms in the group. The column labelled 'Q< 0.9' lists the number of atoms with occupancy less than 0.9.

Mol	Type	Chain	Res	Atoms	RSCC	RSR	B-factors(Å ²)	Q<0.9
3	IPH	A	901	7/7	0.55	0.71	125,127,130,132	0

6.5 Other polymers [i](#)

There are no such residues in this entry.