



Full wwPDB X-ray Structure Validation Report ⓘ

Sep 25, 2023 – 12:36 AM EDT

PDB ID : 5WHL
Title : Kelch domain of human Keap1 bound to inhibitory small molecule fragment:
hydroxyphenyl propionic acid
Authors : Carolan, J.P.; Lynch, A.J.; Allen, K.N.
Deposited on : 2017-07-17
Resolution : 2.50 Å(reported)

This is a Full wwPDB X-ray Structure Validation Report for a publicly released PDB entry.

We welcome your comments at validation@mail.wwpdb.org

A user guide is available at

<https://www.wwpdb.org/validation/2017/XrayValidationReportHelp>

with specific help available everywhere you see the ⓘ symbol.

The types of validation reports are described at

<http://www.wwpdb.org/validation/2017/FAQs#types>.

The following versions of software and data (see [references ⓘ](#)) were used in the production of this report:

MolProbity : 4.02b-467
Mogul : 1.8.5 (274361), CSD as541be (2020)
Xtriage (Phenix) : 1.13
EDS : 2.35.1
Percentile statistics : 20191225.v01 (using entries in the PDB archive December 25th 2019)
Refmac : 5.8.0158
CCP4 : 7.0.044 (Gargrove)
Ideal geometry (proteins) : Engh & Huber (2001)
Ideal geometry (DNA, RNA) : Parkinson et al. (1996)
Validation Pipeline (wwPDB-VP) : 2.35.1

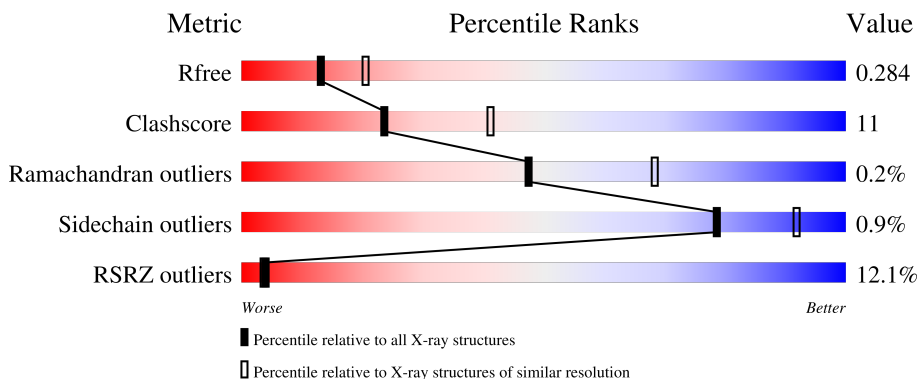
1 Overall quality at a glance

The following experimental techniques were used to determine the structure:

X-RAY DIFFRACTION

The reported resolution of this entry is 2.50 Å.

Percentile scores (ranging between 0-100) for global validation metrics of the entry are shown in the following graphic. The table shows the number of entries on which the scores are based.



Metric	Whole archive (#Entries)	Similar resolution (#Entries, resolution range(Å))
R_{free}	130704	4661 (2.50-2.50)
Clashscore	141614	5346 (2.50-2.50)
Ramachandran outliers	138981	5231 (2.50-2.50)
Sidechain outliers	138945	5233 (2.50-2.50)
RSRZ outliers	127900	4559 (2.50-2.50)

The table below summarises the geometric issues observed across the polymeric chains and their fit to the electron density. The red, orange, yellow and green segments of the lower bar indicate the fraction of residues that contain outliers for ≥ 3 , 2, 1 and 0 types of geometric quality criteria respectively. A grey segment represents the fraction of residues that are not modelled. The numeric value for each fraction is indicated below the corresponding segment, with a dot representing fractions $\leq 5\%$. The upper red bar (where present) indicates the fraction of residues that have poor fit to the electron density. The numeric value is given above the bar.

Mol	Chain	Length	Quality of chain
1	A	336	
1	B	336	

2 Entry composition [i](#)

There are 4 unique types of molecules in this entry. The entry contains 4418 atoms, of which 0 are hydrogens and 0 are deuteriums.

In the tables below, the ZeroOcc column contains the number of atoms modelled with zero occupancy, the AltConf column contains the number of residues with at least one atom in alternate conformation and the Trace column contains the number of residues modelled with at most 2 atoms.

- Molecule 1 is a protein called Kelch-like ECH-associated protein 1.

Mol	Chain	Residues	Atoms					ZeroOcc	AltConf	Trace
			Total	C	N	O	S			
1	A	280	2142	1330	389	408	15	0	0	0
1	B	289	2218	1379	401	422	16	0	1	0

There are 58 discrepancies between the modelled and reference sequences:

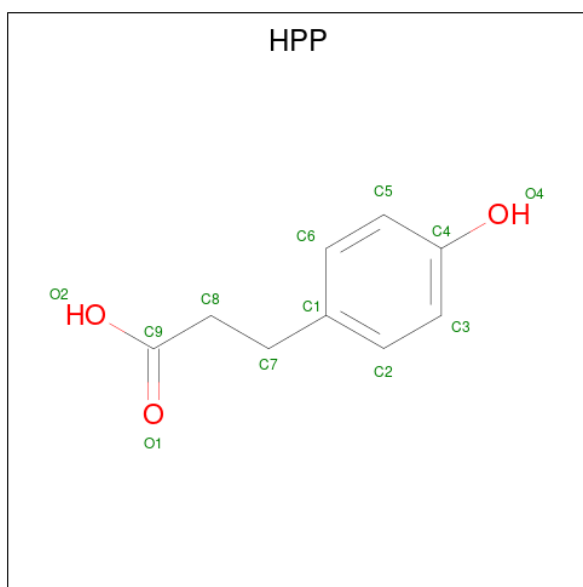
Chain	Residue	Modelled	Actual	Comment	Reference
A	289	MET	-	initiating methionine	UNP Q14145
A	290	GLY	-	expression tag	UNP Q14145
A	291	SER	-	expression tag	UNP Q14145
A	292	SER	-	expression tag	UNP Q14145
A	293	HIS	-	expression tag	UNP Q14145
A	294	HIS	-	expression tag	UNP Q14145
A	295	HIS	-	expression tag	UNP Q14145
A	296	HIS	-	expression tag	UNP Q14145
A	297	HIS	-	expression tag	UNP Q14145
A	298	HIS	-	expression tag	UNP Q14145
A	299	SER	-	expression tag	UNP Q14145
A	300	SER	-	expression tag	UNP Q14145
A	301	GLY	-	expression tag	UNP Q14145
A	302	GLY	-	expression tag	UNP Q14145
A	303	GLU	-	expression tag	UNP Q14145
A	304	ASN	-	expression tag	UNP Q14145
A	305	LEU	-	expression tag	UNP Q14145
A	306	TYR	-	expression tag	UNP Q14145
A	307	PHE	-	expression tag	UNP Q14145
A	308	GLN	-	expression tag	UNP Q14145
A	309	GLY	-	expression tag	UNP Q14145
A	310	HIS	-	expression tag	UNP Q14145
A	311	MET	-	expression tag	UNP Q14145
A	319	SER	CYS	engineered mutation	UNP Q14145
A	540	ALA	GLU	engineered mutation	UNP Q14145

Continued on next page...

Continued from previous page...

Chain	Residue	Modelled	Actual	Comment	Reference
A	542	ALA	GLU	engineered mutation	UNP Q14145
A	613	SER	CYS	engineered mutation	UNP Q14145
A	622	SER	CYS	engineered mutation	UNP Q14145
A	624	SER	CYS	engineered mutation	UNP Q14145
B	289	MET	-	initiating methionine	UNP Q14145
B	290	GLY	-	expression tag	UNP Q14145
B	291	SER	-	expression tag	UNP Q14145
B	292	SER	-	expression tag	UNP Q14145
B	293	HIS	-	expression tag	UNP Q14145
B	294	HIS	-	expression tag	UNP Q14145
B	295	HIS	-	expression tag	UNP Q14145
B	296	HIS	-	expression tag	UNP Q14145
B	297	HIS	-	expression tag	UNP Q14145
B	298	HIS	-	expression tag	UNP Q14145
B	299	SER	-	expression tag	UNP Q14145
B	300	SER	-	expression tag	UNP Q14145
B	301	GLY	-	expression tag	UNP Q14145
B	302	GLY	-	expression tag	UNP Q14145
B	303	GLU	-	expression tag	UNP Q14145
B	304	ASN	-	expression tag	UNP Q14145
B	305	LEU	-	expression tag	UNP Q14145
B	306	TYR	-	expression tag	UNP Q14145
B	307	PHE	-	expression tag	UNP Q14145
B	308	GLN	-	expression tag	UNP Q14145
B	309	GLY	-	expression tag	UNP Q14145
B	310	HIS	-	expression tag	UNP Q14145
B	311	MET	-	expression tag	UNP Q14145
B	319	SER	CYS	engineered mutation	UNP Q14145
B	540	ALA	GLU	engineered mutation	UNP Q14145
B	542	ALA	GLU	engineered mutation	UNP Q14145
B	613	SER	CYS	engineered mutation	UNP Q14145
B	622	SER	CYS	engineered mutation	UNP Q14145
B	624	SER	CYS	engineered mutation	UNP Q14145

- Molecule 2 is HYDROXYPHENYL PROPIONIC ACID (three-letter code: HPP) (formula: $C_9H_{10}O_3$).



Mol	Chain	Residues	Atoms			ZeroOcc	AltConf
2	A	1	Total	C	O	0	0
			12	9	3		

- Molecule 3 is SULFATE ION (three-letter code: SO₄) (formula: O₄S).



Mol	Chain	Residues	Atoms			ZeroOcc	AltConf
3	B	1	Total	O	S	0	0
			5	4	1		
3	B	1	Total	O	S	0	0
			5	4	1		
3	B	1	Total	O	S	0	0
			5	4	1		

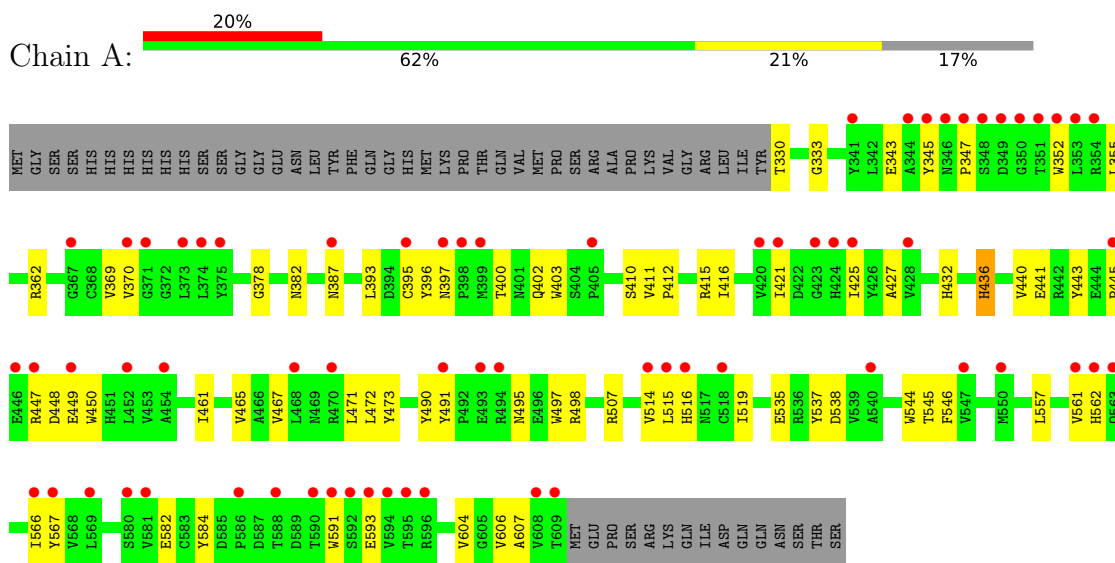
- Molecule 4 is water.

Mol	Chain	Residues	Atoms	ZeroOcc	AltConf
4	A	6	Total O 6 6	0	0
4	B	25	Total O 25 25	0	0

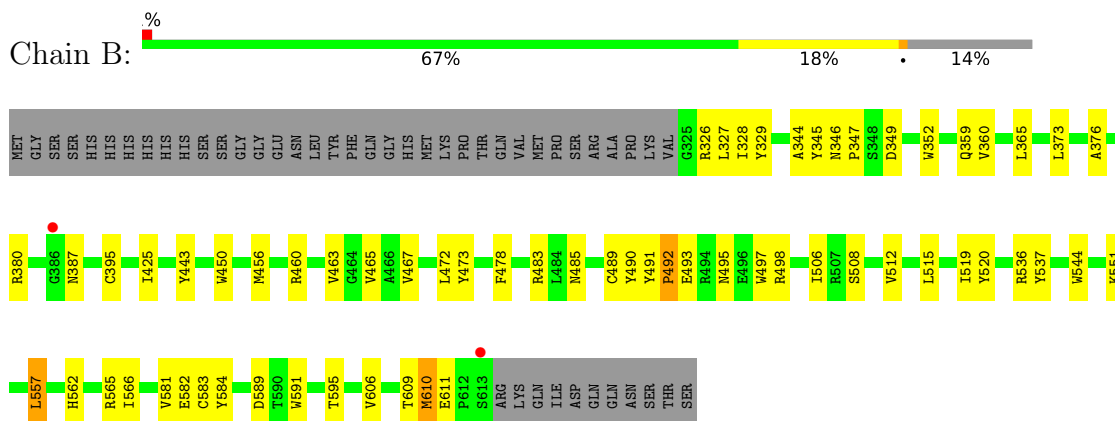
3 Residue-property plots

These plots are drawn for all protein, RNA, DNA and oligosaccharide chains in the entry. The first graphic for a chain summarises the proportions of the various outlier classes displayed in the second graphic. The second graphic shows the sequence view annotated by issues in geometry and electron density. Residues are color-coded according to the number of geometric quality criteria for which they contain at least one outlier: green = 0, yellow = 1, orange = 2 and red = 3 or more. A red dot above a residue indicates a poor fit to the electron density ($RSRZ > 2$). Stretches of 2 or more consecutive residues without any outlier are shown as a green connector. Residues present in the sample, but not in the model, are shown in grey.

- Molecule 1: Kelch-like ECH-associated protein 1



- Molecule 1: Kelch-like ECH-associated protein 1



4 Data and refinement statistics i

Property	Value	Source
Space group	C 1 2 1	Depositor
Cell constants a, b, c, α , β , γ	160.85Å 68.31Å 77.41Å 90.00° 117.68° 90.00°	Depositor
Resolution (Å)	71.22 – 2.50 71.22 – 2.50	Depositor EDS
% Data completeness (in resolution range)	99.6 (71.22-2.50) 91.8 (71.22-2.50)	Depositor EDS
R_{merge}	0.15	Depositor
R_{sym}	(Not available)	Depositor
$\langle I/\sigma(I) \rangle$ ¹	1.13 (at 2.51Å)	Xtrriage
Refinement program	PHENIX (1.12_2829: ???)	Depositor
R, R_{free}	0.230 , 0.284 0.230 , 0.284	Depositor DCC
R_{free} test set	2016 reflections (7.81%)	wwPDB-VP
Wilson B-factor (Å ²)	35.8	Xtrriage
Anisotropy	0.195	Xtrriage
Bulk solvent k_{sol} (e/Å ³), B_{sol} (Å ²)	0.34 , 41.0	EDS
L-test for twinning ²	$\langle L \rangle = 0.48$, $\langle L^2 \rangle = 0.31$	Xtrriage
Estimated twinning fraction	0.025 for -h-2*1,-k,l	Xtrriage
F_o, F_c correlation	0.91	EDS
Total number of atoms	4418	wwPDB-VP
Average B, all atoms (Å ²)	52.0	wwPDB-VP

Xtrriage's analysis on translational NCS is as follows: *The largest off-origin peak in the Patterson function is 5.43% of the height of the origin peak. No significant pseudotranslation is detected.*

¹Intensities estimated from amplitudes.

²Theoretical values of $\langle |L| \rangle$, $\langle L^2 \rangle$ for acentric reflections are 0.5, 0.333 respectively for untwinned datasets, and 0.375, 0.2 for perfectly twinned datasets.

5 Model quality [i](#)

5.1 Standard geometry [i](#)

Bond lengths and bond angles in the following residue types are not validated in this section: HPP, SO4

The Z score for a bond length (or angle) is the number of standard deviations the observed value is removed from the expected value. A bond length (or angle) with $|Z| > 5$ is considered an outlier worth inspection. RMSZ is the root-mean-square of all Z scores of the bond lengths (or angles).

Mol	Chain	Bond lengths		Bond angles	
		RMSZ	# Z >5	RMSZ	# Z >5
1	A	0.37	0/2194	0.62	0/2989
1	B	0.50	0/2275	0.68	1/3098 (0.0%)
All	All	0.44	0/4469	0.65	1/6087 (0.0%)

There are no bond length outliers.

All (1) bond angle outliers are listed below:

Mol	Chain	Res	Type	Atoms	Z	Observed(°)	Ideal(°)
1	B	610	MET	C-N-CA	5.72	136.00	121.70

There are no chirality outliers.

There are no planarity outliers.

5.2 Too-close contacts [i](#)

In the following table, the Non-H and H(model) columns list the number of non-hydrogen atoms and hydrogen atoms in the chain respectively. The H(added) column lists the number of hydrogen atoms added and optimized by MolProbity. The Clashes column lists the number of clashes within the asymmetric unit, whereas Symm-Clashes lists symmetry-related clashes.

Mol	Chain	Non-H	H(model)	H(added)	Clashes	Symm-Clashes
1	A	2142	0	2035	54	0
1	B	2218	0	2113	45	0
2	A	12	0	9	0	0
3	B	15	0	0	1	0
4	A	6	0	0	0	0
4	B	25	0	0	0	0
All	All	4418	0	4157	96	0

The all-atom clashscore is defined as the number of clashes found per 1000 atoms (including hydrogen atoms). The all-atom clashscore for this structure is 11.

All (96) close contacts within the same asymmetric unit are listed below, sorted by their clash magnitude.

Atom-1	Atom-2	Interatomic distance (Å)	Clash overlap (Å)
1:A:472:LEU:HB3	1:A:490:TYR:HB3	1.63	0.81
1:A:382:ASN:OD1	1:A:387:ASN:ND2	2.15	0.80
1:A:436:HIS:CD2	1:A:461:ILE:HD11	2.22	0.73
1:A:397:ASN:HB3	1:A:400:THR:HB	1.71	0.73
1:A:370:VAL:HG11	1:A:445:PRO:HG2	1.70	0.72
1:A:490:TYR:OH	1:A:495:ASN:OD1	2.08	0.69
1:A:516:HIS:HD1	1:B:493:GLU:HB2	1.59	0.67
1:B:472:LEU:HB3	1:B:490:TYR:HB3	1.78	0.64
1:A:514:VAL:O	1:A:561:VAL:HG21	1.99	0.62
1:B:490:TYR:CE2	1:B:492:PRO:HA	2.34	0.62
1:B:327:LEU:HD11	1:B:611:GLU:HG3	1.82	0.61
1:A:425:ILE:HB	1:A:443:TYR:HB3	1.86	0.56
1:A:345:TYR:HB2	1:A:352:TRP:CH2	2.40	0.56
1:B:515:LEU:HD22	1:B:566:ILE:HG13	1.88	0.56
1:A:410:SER:OG	1:A:441:GLU:OE2	2.22	0.55
1:B:478:PHE:HD1	1:B:483:ARG:HG3	1.72	0.55
1:A:515:LEU:HG	1:A:516:HIS:CD2	2.42	0.55
1:B:465:VAL:HA	1:B:473:TYR:O	2.07	0.54
1:B:478:PHE:CD1	1:B:483:ARG:HG3	2.42	0.54
1:B:512:VAL:HA	1:B:520:TYR:O	2.07	0.54
1:B:365:LEU:H	1:B:365:LEU:HD23	1.71	0.54
1:B:347:PRO:HG2	1:B:562:HIS:CE1	2.43	0.53
1:B:557:LEU:H	1:B:557:LEU:HD23	1.74	0.53
1:A:369:VAL:HG23	1:A:607:ALA:HB1	1.92	0.52
1:B:490:TYR:HB2	1:B:497:TRP:CH2	2.44	0.52
1:A:515:LEU:HD22	1:A:566:ILE:HG13	1.93	0.51
1:A:362:ARG:HD2	1:A:378:GLY:O	2.11	0.51
1:B:565:ARG:HD3	1:B:583:CYS:SG	2.50	0.51
1:A:562:HIS:HB3	1:A:567:TYR:CE2	2.46	0.51
1:A:582:GLU:HG2	1:A:593:GLU:HG2	1.93	0.50
1:A:538:ASP:OD2	1:B:498:ARG:NH1	2.45	0.50
1:A:415:ARG:HB2	1:A:461:ILE:HG22	1.95	0.49
1:B:490:TYR:HB2	1:B:497:TRP:CZ2	2.48	0.49
1:A:443:TYR:CE1	1:A:448:ASP:HA	2.47	0.49
1:A:490:TYR:HB2	1:A:497:TRP:CH2	2.48	0.49
1:A:347:PRO:HG2	1:A:562:HIS:CE1	2.48	0.49
1:B:584:TYR:OH	1:B:589:ASP:OD1	2.20	0.49

Continued on next page...

Continued from previous page...

Atom-1	Atom-2	Interatomic distance (Å)	Clash overlap (Å)
1:A:400:THR:HG22	1:A:402:GLN:HB2	1.94	0.49
1:A:516:HIS:ND1	1:B:493:GLU:HB2	2.26	0.48
1:A:436:HIS:CD2	1:A:461:ILE:CD1	2.94	0.48
1:A:440:VAL:HG21	1:A:497:TRP:HZ2	1.80	0.47
1:B:345:TYR:HB2	1:B:352:TRP:CZ3	2.49	0.47
1:B:373:LEU:HB3	1:B:395:CYS:SG	2.55	0.47
1:A:465:VAL:HA	1:A:473:TYR:O	2.15	0.46
1:A:421:ILE:HG12	1:A:467:VAL:HG11	1.98	0.46
1:A:443:TYR:HB2	1:A:450:TRP:CE2	2.51	0.46
1:A:355:LEU:HD13	1:A:396:TYR:OH	2.15	0.46
1:A:507:ARG:NH2	1:A:535:GLU:OE2	2.36	0.46
1:A:421:ILE:HD11	1:A:472:LEU:HB2	1.97	0.46
1:A:425:ILE:HD12	1:A:443:TYR:HD2	1.81	0.46
1:A:537:TYR:HB2	1:A:544:TRP:CE2	2.51	0.46
1:A:416:ILE:HD11	1:A:427:ALA:HB1	1.98	0.45
1:B:329:TYR:O	1:B:606:VAL:HA	2.16	0.45
1:B:485:ASN:HB3	1:B:506:ILE:HA	1.98	0.45
1:A:412:PRO:HG2	1:A:432:HIS:CE1	2.52	0.45
1:A:491:TYR:CE1	1:A:498:ARG:HD3	2.51	0.44
1:B:425:ILE:HB	1:B:443:TYR:HB3	1.99	0.44
1:B:467:VAL:HG22	1:B:472:LEU:HD12	2.00	0.44
1:A:345:TYR:HB2	1:A:352:TRP:CZ3	2.52	0.44
1:A:393:LEU:HD22	1:A:450:TRP:HZ2	1.83	0.44
1:A:425:ILE:HD12	1:A:443:TYR:CD2	2.53	0.44
1:B:443:TYR:HB2	1:B:450:TRP:CZ3	2.53	0.44
1:B:537:TYR:HB2	1:B:544:TRP:CE3	2.53	0.43
1:A:411:VAL:HG22	1:A:412:PRO:HD2	2.00	0.43
1:B:380:ARG:NH2	1:B:387:ASN:HB3	2.34	0.43
1:A:467:VAL:HA	1:A:471:LEU:O	2.18	0.43
1:A:447:ARG:O	1:A:449:GLU:HG3	2.18	0.43
1:B:551:LYS:HB3	1:B:582:GLU:CD	2.39	0.43
1:B:456:MET:SD	1:B:460:ARG:HD2	2.58	0.43
1:A:537:TYR:HB2	1:A:544:TRP:CD2	2.54	0.42
1:B:359:GLN:HG3	1:B:360:VAL:HG23	2.00	0.42
1:A:473:TYR:CD1	1:A:519:ILE:HD11	2.54	0.42
1:A:545:THR:HG22	1:A:546:PHE:O	2.18	0.42
1:B:483:ARG:HG2	1:B:508[A]:SER:HB3	2.01	0.42
1:B:345:TYR:HB2	1:B:352:TRP:CH2	2.53	0.42
1:A:584:TYR:HB2	1:A:591:TRP:CH2	2.54	0.42
1:A:395:CYS:O	1:A:403:TRP:HA	2.20	0.42
1:B:491:TYR:O	1:B:495:ASN:N	2.53	0.41

Continued on next page...

Continued from previous page...

Atom-1	Atom-2	Interatomic distance (Å)	Clash overlap (Å)
1:B:609:THR:OG1	3:B:702:SO4:O4	2.31	0.41
1:B:326:ARG:HE	1:B:610:MET:HE2	1.85	0.41
1:A:330:THR:HG22	1:A:343:GLU:O	2.20	0.41
1:B:443:TYR:HB2	1:B:450:TRP:CE3	2.55	0.41
1:B:443:TYR:HB2	1:B:450:TRP:CH2	2.55	0.41
1:B:584:TYR:HB2	1:B:591:TRP:CZ3	2.55	0.41
1:A:393:LEU:HD22	1:A:450:TRP:CZ2	2.56	0.41
1:A:604:VAL:HG23	1:A:606:VAL:HG23	2.01	0.41
1:B:566:ILE:HB	1:B:584:TYR:HB3	2.02	0.41
1:B:489:CYS:O	1:B:497:TRP:HA	2.21	0.41
1:A:584:TYR:HB2	1:A:591:TRP:CZ2	2.56	0.41
1:B:365:LEU:HD12	1:B:376:ALA:HB1	2.03	0.41
1:B:581:VAL:HB	1:B:595:THR:HG22	2.03	0.41
1:B:328:ILE:O	1:B:344:ALA:HA	2.21	0.41
1:B:346:ASN:HB3	1:B:349:ASP:OD1	2.21	0.40
1:B:519:ILE:O	1:B:536:ARG:HA	2.21	0.40
1:A:461:ILE:HD13	1:A:461:ILE:HG21	1.87	0.40
1:A:333:GLY:HA3	1:A:604:VAL:HG12	2.04	0.40

There are no symmetry-related clashes.

5.3 Torsion angles [i](#)

5.3.1 Protein backbone [i](#)

In the following table, the Percentiles column shows the percent Ramachandran outliers of the chain as a percentile score with respect to all X-ray entries followed by that with respect to entries of similar resolution.

The Analysed column shows the number of residues for which the backbone conformation was analysed, and the total number of residues.

Mol	Chain	Analysed	Favoured	Allowed	Outliers	Percentiles	
1	A	278/336 (83%)	265 (95%)	13 (5%)	0	100	100
1	B	288/336 (86%)	279 (97%)	8 (3%)	1 (0%)	41	61
All	All	566/672 (84%)	544 (96%)	21 (4%)	1 (0%)	47	68

All (1) Ramachandran outliers are listed below:

Mol	Chain	Res	Type
1	B	492	PRO

5.3.2 Protein sidechains [i](#)

In the following table, the Percentiles column shows the percent sidechain outliers of the chain as a percentile score with respect to all X-ray entries followed by that with respect to entries of similar resolution.

The Analysed column shows the number of residues for which the sidechain conformation was analysed, and the total number of residues.

Mol	Chain	Analysed	Rotameric	Outliers	Percentiles	
1	A	225/275 (82%)	223 (99%)	2 (1%)	78	92
1	B	234/275 (85%)	232 (99%)	2 (1%)	78	92
All	All	459/550 (84%)	455 (99%)	4 (1%)	78	92

All (4) residues with a non-rotameric sidechain are listed below:

Mol	Chain	Res	Type
1	A	436	HIS
1	A	557	LEU
1	B	463	VAL
1	B	557	LEU

Sometimes sidechains can be flipped to improve hydrogen bonding and reduce clashes. All (1) such sidechains are listed below:

Mol	Chain	Res	Type
1	B	387	ASN

5.3.3 RNA [i](#)

There are no RNA molecules in this entry.

5.4 Non-standard residues in protein, DNA, RNA chains [i](#)

There are no non-standard protein/DNA/RNA residues in this entry.

5.5 Carbohydrates [i](#)

There are no monosaccharides in this entry.

5.6 Ligand geometry [i](#)

4 ligands are modelled in this entry.

In the following table, the Counts columns list the number of bonds (or angles) for which Mogul statistics could be retrieved, the number of bonds (or angles) that are observed in the model and the number of bonds (or angles) that are defined in the Chemical Component Dictionary. The Link column lists molecule types, if any, to which the group is linked. The Z score for a bond length (or angle) is the number of standard deviations the observed value is removed from the expected value. A bond length (or angle) with $|Z| > 2$ is considered an outlier worth inspection. RMSZ is the root-mean-square of all Z scores of the bond lengths (or angles).

Mol	Type	Chain	Res	Link	Bond lengths			Bond angles		
					Counts	RMSZ	# Z > 2	Counts	RMSZ	# Z > 2
3	SO4	B	702	-	4,4,4	0.22	0	6,6,6	0.29	0
3	SO4	B	701	-	4,4,4	0.18	0	6,6,6	0.31	0
3	SO4	B	703	-	4,4,4	0.25	0	6,6,6	0.35	0
2	HPP	A	701	-	12,12,12	0.87	0	15,15,15	2.38	2 (13%)

In the following table, the Chirals column lists the number of chiral outliers, the number of chiral centers analysed, the number of these observed in the model and the number defined in the Chemical Component Dictionary. Similar counts are reported in the Torsion and Rings columns. '2' means no outliers of that kind were identified.

Mol	Type	Chain	Res	Link	Chirals	Torsions	Rings
2	HPP	A	701	-	-	2/5/5/5	0/1/1/1

There are no bond length outliers.

All (2) bond angle outliers are listed below:

Mol	Chain	Res	Type	Atoms	Z	Observed(°)	Ideal(°)
2	A	701	HPP	O2-C9-O1	-8.20	102.86	123.30
2	A	701	HPP	O1-C9-C8	-3.66	111.32	123.08

There are no chirality outliers.

All (2) torsion outliers are listed below:

Mol	Chain	Res	Type	Atoms
2	A	701	HPP	C7-C8-C9-O2

Continued on next page...

Continued from previous page...

Mol	Chain	Res	Type	Atoms
2	A	701	HPP	C7-C8-C9-O1

There are no ring outliers.

1 monomer is involved in 1 short contact:

Mol	Chain	Res	Type	Clashes	Symm-Clashes
3	B	702	SO4	1	0

5.7 Other polymers [i](#)

There are no such residues in this entry.

5.8 Polymer linkage issues [i](#)

There are no chain breaks in this entry.

6 Fit of model and data

6.1 Protein, DNA and RNA chains

In the following table, the column labelled ‘#RSRZ > 2’ contains the number (and percentage) of RSRZ outliers, followed by percent RSRZ outliers for the chain as percentile scores relative to all X-ray entries and entries of similar resolution. The OWAB column contains the minimum, median, 95th percentile and maximum values of the occupancy-weighted average B-factor per residue. The column labelled ‘Q < 0.9’ lists the number of (and percentage) of residues with an average occupancy less than 0.9.

Mol	Chain	Analysed	<RSRZ>	#RSRZ>2	OWAB(Å ²)	Q<0.9
1	A	280/336 (83%)	1.33	67 (23%) 0 0	31, 63, 108, 140	0
1	B	289/336 (86%)	0.29	2 (0%) 87 89	22, 35, 54, 76	0
All	All	569/672 (84%)	0.80	69 (12%) 4 4	22, 44, 100, 140	0

All (69) RSRZ outliers are listed below:

Mol	Chain	Res	Type	RSRZ
1	A	446	GLU	7.8
1	A	562	HIS	6.9
1	A	561	VAL	6.9
1	A	566	ILE	5.7
1	A	494	ARG	5.7
1	A	445	PRO	5.4
1	A	421	ILE	5.4
1	A	395	CYS	4.9
1	A	346	ASN	4.9
1	A	563	GLN	4.8
1	A	351	THR	4.8
1	A	515	LEU	4.8
1	A	352	TRP	4.7
1	A	516	HIS	4.7
1	A	345	TYR	4.6
1	A	567	TYR	4.6
1	A	425	ILE	4.5
1	A	399	MET	4.3
1	A	353	LEU	4.2
1	A	590	THR	4.1
1	A	350	GLY	4.1
1	A	344	ALA	3.9
1	A	591	TRP	3.9
1	A	348	SER	3.7

Continued on next page...

Continued from previous page...

Mol	Chain	Res	Type	RSRZ
1	A	608	VAL	3.7
1	A	449	GLU	3.6
1	A	347	PRO	3.5
1	A	374	LEU	3.5
1	A	588	THR	3.4
1	A	592	SER	3.4
1	A	581	VAL	3.3
1	A	424	HIS	3.2
1	A	609	THR	3.2
1	A	594	VAL	3.2
1	A	447	ARG	3.0
1	A	397	ASN	2.9
1	A	420	VAL	2.9
1	A	398	PRO	2.9
1	A	491	TYR	2.7
1	A	349	ASP	2.7
1	A	518	CYS	2.6
1	B	613	SER	2.6
1	A	428	VAL	2.6
1	A	367	GLY	2.6
1	A	387	ASN	2.6
1	A	595	THR	2.5
1	A	371	GLY	2.5
1	A	452	LEU	2.4
1	A	370	VAL	2.4
1	A	375	TYR	2.4
1	A	493	GLU	2.4
1	A	454	ALA	2.4
1	A	547	VAL	2.3
1	A	569	LEU	2.3
1	A	540	ALA	2.3
1	A	580	SER	2.3
1	A	514	VAL	2.2
1	A	373	LEU	2.2
1	A	596	ARG	2.2
1	A	341	TYR	2.2
1	A	354	ARG	2.2
1	A	423	GLY	2.1
1	B	386	GLY	2.1
1	A	405	PRO	2.1
1	A	468	LEU	2.1
1	A	470	ARG	2.1

Continued on next page...

Continued from previous page...

Mol	Chain	Res	Type	RSRZ
1	A	550	MET	2.1
1	A	586	PRO	2.1
1	A	593	GLU	2.0

6.2 Non-standard residues in protein, DNA, RNA chains [i](#)

There are no non-standard protein/DNA/RNA residues in this entry.

6.3 Carbohydrates [i](#)

There are no monosaccharides in this entry.

6.4 Ligands [i](#)

In the following table, the Atoms column lists the number of modelled atoms in the group and the number defined in the chemical component dictionary. The B-factors column lists the minimum, median, 95th percentile and maximum values of B factors of atoms in the group. The column labelled 'Q< 0.9' lists the number of atoms with occupancy less than 0.9.

Mol	Type	Chain	Res	Atoms	RSCC	RSR	B-factors(Å ²)	Q<0.9
2	HPP	A	701	12/12	0.88	0.32	41,53,64,66	0
3	SO4	B	703	5/5	0.91	0.13	47,47,61,72	0
3	SO4	B	702	5/5	0.92	0.21	60,61,70,76	0
3	SO4	B	701	5/5	0.98	0.19	38,39,45,51	0

6.5 Other polymers [i](#)

There are no such residues in this entry.