



Full wwPDB X-ray Structure Validation Report ⓘ

Dec 4, 2023 – 05:04 am GMT

PDB ID : 2WLS
Title : Crystal structure of Mus musculus Acetylcholinesterase in complex with AMTS13
Authors : Pang, Y.P.; Ekstrom, F.; Polsinelli, G.A.; Gao, Y.; Rana, S.; Hua, D.H.; Andersson, B.; Andersson, P.O.; Peng, L.; Singh, S.K.; Mishra, R.K.; Zhu, K.Y.; Fallon, A.M.; Ragsdale, D.W.; Brimijoin, S.
Deposited on : 2009-06-25
Resolution : 2.60 Å(reported)

This is a Full wwPDB X-ray Structure Validation Report for a publicly released PDB entry.

We welcome your comments at validation@mail.wwpdb.org

A user guide is available at

<https://www.wwpdb.org/validation/2017/XrayValidationReportHelp>

with specific help available everywhere you see the ⓘ symbol.

The types of validation reports are described at

<http://www.wwpdb.org/validation/2017/FAQs#types>.

The following versions of software and data (see [references ⓘ](#)) were used in the production of this report:

MolProbity : 4.02b-467
Mogul : **NOT EXECUTED**
Xtriage (Phenix) : 1.13
EDS : **FAILED**
buster-report : **NOT EXECUTED**
Percentile statistics : **NOT EXECUTED**
Ideal geometry (proteins) : Engh & Huber (2001)
Ideal geometry (DNA, RNA) : Parkinson et al. (1996)
Validation Pipeline (wwPDB-VP) : 2.36

1 Overall quality at a glance

The following experimental techniques were used to determine the structure:

X-RAY DIFFRACTION

The reported resolution of this entry is 2.60 Å.

There are no overall percentile quality scores available for this entry.

2 Entry composition [i](#)

There are 6 unique types of molecules in this entry. The entry contains 8783 atoms, of which 0 are hydrogens and 0 are deuteriums.

In the tables below, the ZeroOcc column contains the number of atoms modelled with zero occupancy, the AltConf column contains the number of residues with at least one atom in alternate conformation and the Trace column contains the number of residues modelled with at most 2 atoms.

- Molecule 1 is a protein called ACETYLCHOLINESTERASE.

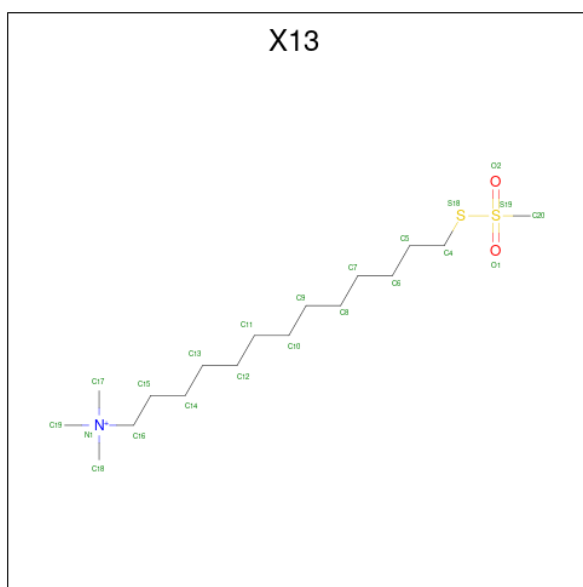
Mol	Chain	Residues	Atoms					ZeroOcc	AltConf	Trace
			Total	C	N	O	S			
1	A	535	Total 4185	C 2687	N 727	O 757	S 14	0	3	0
1	B	533	Total 4159	C 2670	N 718	O 757	S 14	0	0	0

- Molecule 2 is 2-acetamido-2-deoxy-beta-D-glucopyranose (three-letter code: NAG) (formula: $C_8H_{15}NO_6$).



Mol	Chain	Residues	Atoms				ZeroOcc	AltConf
			Total	C	N	O		
2	A	1	Total 14	C 8	N 1	O 5	0	0
2	A	1	Total 14	C 8	N 1	O 5	0	0

- Molecule 3 is N,N,N-trimethyl-13-[(methylsulfonyl)sulfonyl]tridecan-1-aminium (three-letter code: X13) (formula: $C_{17}H_{38}NO_2S_2$).



Mol	Chain	Residues	Atoms			ZeroOcc	AltConf	
3	A	1	Total	C	N	S	0	0
			18	16	1	1		
3	B	1	Total	C	N	S	0	0
			18	16	1	1		

- Molecule 4 is DI(HYDROXYETHYL)ETHER (three-letter code: PEG) (formula: $C_4H_{10}O_3$).



Mol	Chain	Residues	Atoms			ZeroOcc	AltConf
4	B	1	Total	C	O	0	0
			7	4	3		

- Molecule 5 is HEXAETHYLENE GLYCOL (three-letter code: P6G) (formula: $C_{12}H_{26}O_7$).



Mol	Chain	Residues	Atoms		ZeroOcc	AltConf
5	B	1	Total	C O	0	0
			19	12 7		

- Molecule 6 is water.

Mol	Chain	Residues	Atoms		ZeroOcc	AltConf
6	A	183	Total	O	0	0
			183	183		
6	B	166	Total	O	0	0
			166	166		

SEQUENCE-PLOTS INFOmissingINFO

3 Data and refinement statistics

EDS failed to run properly - this section is therefore incomplete.

Property	Value	Source
Space group	P 21 21 21	Depositor
Cell constants a, b, c, α , β , γ	78.48Å 110.31Å 227.60Å 90.00° 90.00° 90.00°	Depositor
Resolution (Å)	29.04 – 2.60	Depositor
% Data completeness (in resolution range)	99.5 (29.04-2.60)	Depositor
R_{merge}	0.08	Depositor
R_{sym}	(Not available)	Depositor
$\langle I/\sigma(I) \rangle$ ¹	4.40 (at 2.61Å)	Xtrriage
Refinement program	PHENIX (PHENIX.REFINE)	Depositor
R, R_{free}	0.185 , 0.226	Depositor
Wilson B-factor (Å ²)	60.7	Xtrriage
Anisotropy	0.043	Xtrriage
L-test for twinning ²	$\langle L \rangle = 0.50$, $\langle L^2 \rangle = 0.34$	Xtrriage
Estimated twinning fraction	No twinning to report.	Xtrriage
Total number of atoms	8783	wwPDB-VP
Average B, all atoms (Å ²)	58.0	wwPDB-VP

Xtrriage's analysis on translational NCS is as follows: *The largest off-origin peak in the Patterson function is 3.02% of the height of the origin peak. No significant pseudotranslation is detected.*

¹Intensities estimated from amplitudes.

²Theoretical values of $\langle |L| \rangle$, $\langle L^2 \rangle$ for acentric reflections are 0.5, 0.333 respectively for untwinned datasets, and 0.375, 0.2 for perfectly twinned datasets.

4 Model quality

4.1 Standard geometry

Bond lengths and bond angles in the following residue types are not validated in this section: NAG, P6G, X13, PEG

The Z score for a bond length (or angle) is the number of standard deviations the observed value is removed from the expected value. A bond length (or angle) with $|Z| > 5$ is considered an outlier worth inspection. RMSZ is the root-mean-square of all Z scores of the bond lengths (or angles).

Mol	Chain	Bond lengths		Bond angles	
		RMSZ	# Z >5	RMSZ	# Z >5
1	A	0.41	0/4318	0.57	0/5901
1	B	0.39	0/4282	0.56	0/5851
All	All	0.40	0/8600	0.57	0/11752

There are no bond length outliers.

There are no bond angle outliers.

There are no chirality outliers.

There are no planarity outliers.

4.2 Too-close contacts

In the following table, the Non-H and H(model) columns list the number of non-hydrogen atoms and hydrogen atoms in the chain respectively. The H(added) column lists the number of hydrogen atoms added and optimized by MolProbity. The Clashes column lists the number of clashes within the asymmetric unit, whereas Symm-Clashes lists symmetry-related clashes.

Mol	Chain	Non-H	H(model)	H(added)	Clashes	Symm-Clashes
1	A	4185	0	4072	85	0
1	B	4159	0	4047	99	0
2	A	28	0	26	0	0
3	A	18	0	35	4	0
3	B	18	0	35	0	0
4	B	7	0	10	0	0
5	B	19	0	24	3	0
6	A	183	0	0	6	0
6	B	166	0	0	1	0
All	All	8783	0	8249	184	0

The all-atom clashscore is defined as the number of clashes found per 1000 atoms (including

hydrogen atoms). The all-atom clashscore for this structure is 11.

All (184) close contacts within the same asymmetric unit are listed below, sorted by their clash magnitude.

Atom-1	Atom-2	Interatomic distance (Å)	Clash overlap (Å)
1:B:197:VAL:H	1:B:223:HIS:CD2	1.74	1.05
1:B:497:SER:H	1:B:498:PRO:HA	1.19	1.04
1:B:197:VAL:N	1:B:223:HIS:HD2	1.73	0.86
1:B:197:VAL:H	1:B:223:HIS:HD2	0.88	0.85
1:A:4:GLU:OE2	1:A:18:ARG:HD3	1.75	0.85
1:A:197:VAL:H	1:A:223:HIS:HD2	1.26	0.82
1:B:497:SER:H	1:B:498:PRO:CA	1.96	0.77
1:A:527:GLN:HE21	5:B:1546:P6G:H21	1.50	0.77
1:A:245:ARG:O	1:A:249:THR:HG23	1.84	0.76
1:B:210:GLY:HA3	1:B:232:PRO:HG3	1.68	0.75
1:B:458:PRO:HA	1:B:465:TYR:CD2	2.23	0.74
1:A:166:GLU:HB2	1:A:270:ILE:HD13	1.69	0.73
1:A:48:MET:HE1	1:A:166:GLU:HA	1.70	0.73
1:B:245:ARG:O	1:B:249:THR:HG23	1.89	0.72
1:A:381:HIS:HA	5:B:1546:P6G:H172	1.72	0.71
1:B:50:PRO:HG3	1:B:175:ASP:OD1	1.91	0.70
1:A:197:VAL:H	1:A:223:HIS:CD2	2.08	0.70
1:B:166:GLU:HG2	1:B:270:ILE:HD13	1.75	0.69
1:A:511:VAL:HG11	1:A:518:LEU:HD13	1.76	0.67
1:A:65:PHE:HB2	1:A:90[B]:ARG:HD2	1.77	0.66
1:B:77:TYR:CZ	1:B:348:LYS:HG2	2.31	0.65
1:B:294:ILE:HG12	1:B:365:ILE:HG22	1.78	0.65
1:A:329:GLY:HA3	1:A:428:TYR:CZ	2.32	0.64
1:B:497:SER:N	1:B:498:PRO:HA	2.03	0.64
1:B:48:MET:HE1	1:B:166:GLU:HA	1.79	0.63
1:B:45:ARG:HD2	1:B:51:GLU:OE1	1.99	0.62
1:B:491:ASP:HB3	1:B:494:ASP:HB3	1.80	0.62
1:A:90[B]:ARG:HG2	1:A:90[B]:ARG:HH11	1.65	0.62
1:A:296:ARG:HH21	1:A:369:GLN:NE2	1.98	0.62
1:A:470:ARG:HH11	1:A:474:GLN:HE22	1.49	0.60
1:B:44:SER:HA	1:B:274:ARG:HD2	1.83	0.60
1:B:250:LEU:O	1:B:254:LEU:HG	2.00	0.60
1:B:122:GLY:O	1:B:123:PHE:HB2	2.00	0.60
1:B:197:VAL:N	1:B:223:HIS:CD2	2.58	0.60
1:A:165:ARG:NH1	1:A:166:GLU:HG3	2.18	0.59
1:B:48:MET:HA	1:B:48:MET:HE2	1.85	0.59
1:B:348:LYS:O	1:B:440:PRO:HG3	2.02	0.59
1:B:329:GLY:HA3	1:B:428:TYR:CZ	2.38	0.58

Continued on next page...

Continued from previous page...

Atom-1	Atom-2	Interatomic distance (Å)	Clash overlap (Å)
1:A:224:ARG:HG2	1:A:325:GLN:HB2	1.84	0.58
1:A:327:LEU:HD12	1:A:328:VAL:N	2.18	0.58
1:B:48:MET:HA	1:B:48:MET:CE	2.34	0.58
1:A:329:GLY:HA3	1:A:428:TYR:CE2	2.39	0.57
1:A:1:GLU:HA	1:A:4:GLU:OE1	2.05	0.56
1:B:161:LEU:HD12	1:B:270:ILE:HD11	1.87	0.55
1:B:24:ALA:HB3	1:B:140:GLN:HG3	1.89	0.55
1:B:353:LEU:HB3	1:B:391:PRO:HB2	1.89	0.55
1:B:200:PHE:CB	1:B:226:VAL:HB	2.37	0.55
1:A:213:ILE:O	1:A:219:ARG:HD3	2.09	0.53
1:B:48:MET:HE2	1:B:49:PRO:HD3	1.90	0.53
1:A:369:GLN:HG3	6:A:2125:HOH:O	2.07	0.53
1:B:112:THR:HG21	1:B:143:GLY:O	2.08	0.53
1:A:113:PRO:HG2	1:A:485:ARG:HG2	1.90	0.53
1:B:211:MET:HG2	1:B:308:LEU:HD21	1.91	0.53
1:A:48:MET:HE1	1:A:165:ARG:O	2.08	0.53
1:B:433:ARG:CZ	1:B:437:LEU:HD23	2.39	0.52
1:A:338:PHE:CE2	3:A:1543:X13:H121	2.46	0.51
1:A:536:LEU:O	1:A:540:LEU:HD22	2.10	0.51
1:A:252:ALA:HB1	1:A:257:CYS:HB2	1.92	0.51
1:A:326:VAL:HG12	1:A:328:VAL:HG13	1.93	0.51
1:A:50:PRO:HG3	1:A:175:ASP:OD1	2.11	0.51
1:A:390:ASP:OD2	1:A:393[B]:HIS:HD2	1.94	0.51
1:A:66:GLN:HG3	1:A:98:TYR:CD1	2.46	0.50
1:A:76:LEU:HD22	1:A:341:TYR:CE2	2.46	0.50
1:A:463:LEU:O	1:A:464:ASN:HB2	2.11	0.50
1:B:329:GLY:HA3	1:B:428:TYR:CE1	2.46	0.50
1:A:90[B]:ARG:HG2	1:A:90[B]:ARG:NH1	2.26	0.50
1:B:511:VAL:HB	1:B:518:LEU:HD22	1.93	0.50
1:B:48:MET:CE	1:B:166:GLU:HA	2.42	0.50
1:A:458:PRO:HA	1:A:465:TYR:CD2	2.47	0.49
1:B:300:VAL:HB	1:B:301:PRO:HD2	1.94	0.49
1:B:48:MET:HE2	1:B:49:PRO:CD	2.43	0.49
1:B:424:ARG:HG3	1:B:424:ARG:NH1	2.27	0.49
1:B:293:SER:HB3	1:B:368:PRO:HB3	1.94	0.49
1:A:468:GLU:H	1:A:468:GLU:CD	2.15	0.49
1:A:88:PRO:HD3	6:A:2032:HOH:O	2.13	0.48
1:A:294:ILE:HD13	1:A:343:VAL:CG2	2.43	0.48
1:B:542:ALA:O	1:B:543:THR:OXT	2.32	0.48
1:B:213:ILE:O	1:B:219:ARG:HD3	2.13	0.48
1:A:65:PHE:O	1:A:90[B]:ARG:NE	2.46	0.48

Continued on next page...

Continued from previous page...

Atom-1	Atom-2	Interatomic distance (Å)	Clash overlap (Å)
1:B:160:ALA:HB2	1:B:169:GLY:HA2	1.96	0.48
1:A:390:ASP:OD2	1:A:393[B]:HIS:CD2	2.67	0.48
1:B:457:LEU:O	1:B:463:LEU:HD12	2.13	0.48
1:A:444:GLY:O	1:A:446:PRO:HD3	2.13	0.48
1:A:365:ILE:O	1:A:368:PRO:HD3	2.14	0.47
1:A:296:ARG:NH2	1:A:369:GLN:NE2	2.62	0.47
1:A:252:ALA:CB	1:A:269:LEU:HD21	2.44	0.47
1:B:166:GLU:HG2	1:B:270:ILE:CD1	2.43	0.47
1:B:210:GLY:CA	1:B:232:PRO:HG3	2.43	0.47
1:A:440:PRO:HD2	1:A:443:MET:HE3	1.96	0.47
1:B:105:TYR:CD2	1:B:105:TYR:C	2.88	0.47
1:B:320:ASP:OD1	1:B:322:GLN:HG2	2.15	0.47
1:A:165:ARG:HH12	1:A:166:GLU:HG3	1.80	0.46
1:A:433:ARG:NH2	1:A:440:PRO:O	2.48	0.46
1:A:13:ARG:NH2	6:A:2007:HOH:O	2.48	0.46
1:A:166:GLU:HB2	1:A:270:ILE:CD1	2.44	0.46
1:B:159:LEU:C	1:B:159:LEU:HD23	2.35	0.46
1:B:68:VAL:HG23	1:B:90:ARG:HB2	1.98	0.46
1:B:326:VAL:HG12	1:B:328:VAL:HG13	1.98	0.46
1:B:424:ARG:HH11	1:B:424:ARG:CG	2.29	0.46
1:A:104:PRO:HG3	1:A:143:GLY:HA2	1.97	0.46
1:A:540:LEU:HD22	1:A:540:LEU:H	1.80	0.46
1:B:252:ALA:HB2	1:B:269:LEU:HD21	1.98	0.46
1:A:48:MET:HA	1:A:48:MET:CE	2.46	0.45
1:A:276[B]:ARG:NH1	1:A:280:ASP:OD2	2.49	0.45
1:B:38:ALA:HB2	1:B:178:LEU:HD23	1.97	0.45
1:B:202:GLU:HA	1:B:228:GLN:O	2.15	0.45
1:A:227:LEU:HD12	1:A:227:LEU:N	2.31	0.45
1:A:528:THR:O	1:A:531:PHE:HB3	2.16	0.45
1:B:439:TRP:HB3	1:B:440:PRO:HD2	1.97	0.45
1:A:395:ARG:HD2	1:A:396:ASP:OD1	2.16	0.45
1:A:463:LEU:HD23	1:A:463:LEU:HA	1.69	0.45
1:A:195:MET:HE3	6:A:2080:HOH:O	2.14	0.45
1:A:211:MET:HE3	1:A:232:PRO:HA	1.98	0.45
1:B:45:ARG:O	1:B:48:MET:HB2	2.17	0.45
1:A:65:PHE:CB	1:A:90[B]:ARG:HD2	2.46	0.45
1:A:121:GLY:HA2	3:A:1543:X13:H152	1.98	0.45
1:A:194:PRO:HG3	6:A:2079:HOH:O	2.17	0.45
1:B:41:PRO:HG3	1:B:97:LEU:CD1	2.47	0.45
1:B:294:ILE:HD13	1:B:343:VAL:CG2	2.46	0.45
1:B:491:ASP:HA	1:B:492:PRO:HD3	1.76	0.45

Continued on next page...

Continued from previous page...

Atom-1	Atom-2	Interatomic distance (Å)	Clash overlap (Å)
1:A:211:MET:HG2	1:A:308:LEU:HD21	1.99	0.44
1:B:5:ASP:HA	1:B:6:PRO:HD3	1.87	0.44
1:A:75:THR:O	1:A:78:PRO:HD3	2.17	0.44
1:B:40:PRO:HA	1:B:41:PRO:HD3	1.78	0.44
1:B:77:TYR:CD1	1:B:348:LYS:HE3	2.52	0.44
1:A:177:ARG:CZ	1:A:217:PRO:HB2	2.48	0.44
3:A:1543:X13:H173	3:A:1543:X13:H151	1.71	0.44
1:B:269:LEU:C	1:B:269:LEU:HD23	2.39	0.43
1:A:24:ALA:HB3	1:A:140:GLN:HG3	1.99	0.43
1:B:295:PHE:CE2	1:B:338:PHE:CZ	3.06	0.43
1:B:227:LEU:HD12	1:B:227:LEU:N	2.33	0.43
1:B:304:ASP:OD2	1:B:306:ASP:HB3	2.19	0.43
1:A:509:GLN:NE2	1:A:520:VAL:HG11	2.34	0.43
1:B:428:TYR:C	1:B:428:TYR:CD1	2.91	0.43
1:B:540:LEU:C	1:B:542:ALA:H	2.22	0.43
1:B:49:PRO:HA	1:B:50:PRO:HD3	1.89	0.43
1:B:340:VAL:HG11	1:B:443:MET:CE	2.48	0.43
1:A:295:PHE:CE2	1:A:338:PHE:CZ	3.07	0.42
1:A:76:LEU:HD22	1:A:341:TYR:CD2	2.53	0.42
1:B:453:PHE:HB3	1:B:476:LEU:HD12	2.00	0.42
1:A:385:TRP:HD1	1:B:527:GLN:OE1	2.02	0.42
1:B:17:LEU:HD23	1:B:60:LEU:HB3	2.01	0.42
1:B:274:ARG:HD3	6:B:2100:HOH:O	2.20	0.42
1:B:458:PRO:HA	1:B:465:TYR:HD2	1.80	0.42
1:A:146:LEU:HD23	1:A:147:VAL:N	2.34	0.42
1:B:113:PRO:HG2	1:B:485:ARG:HG2	2.02	0.42
1:B:183:VAL:O	1:B:187:ILE:HB	2.19	0.42
1:A:48:MET:HE1	1:A:166:GLU:CA	2.45	0.42
1:B:305:GLY:HA2	1:B:309:SER:HA	2.00	0.42
1:B:288:VAL:CG2	1:B:298:SER:HB3	2.49	0.42
1:B:535:PHE:CD2	5:B:1546:P6G:H121	2.55	0.42
1:A:112:THR:HG21	1:A:143:GLY:O	2.20	0.41
1:A:291:GLN:HE21	1:A:291:GLN:HB2	1.64	0.41
1:A:300:VAL:HB	1:A:301:PRO:HD2	2.02	0.41
1:A:511:VAL:HB	1:A:518:LEU:HD22	2.02	0.41
1:B:296:ARG:NH2	1:B:406:ASN:OD1	2.53	0.41
1:B:161:LEU:HD12	1:B:270:ILE:CD1	2.50	0.41
1:A:313:GLU:HB2	6:A:2091:HOH:O	2.21	0.41
1:B:160:ALA:HB2	1:B:169:GLY:CA	2.50	0.41
1:B:540:LEU:HD23	1:B:540:LEU:HA	1.78	0.41
1:B:200:PHE:HB2	1:B:226:VAL:HB	2.02	0.41

Continued on next page...

Continued from previous page...

Atom-1	Atom-2	Interatomic distance (Å)	Clash overlap (Å)
1:B:331:VAL:HG22	1:B:334:GLU:OE2	2.21	0.41
1:A:328:VAL:O	1:A:427:ALA:HA	2.20	0.41
1:A:348:LYS:O	1:A:440:PRO:HG3	2.20	0.41
1:B:329:GLY:HA3	1:B:428:TYR:CE2	2.56	0.41
1:B:536:LEU:HD23	1:B:536:LEU:HA	1.87	0.41
1:A:457:LEU:N	1:A:458:PRO:CD	2.84	0.41
1:B:187:ILE:HD12	1:B:187:ILE:HA	1.84	0.41
1:B:524:LEU:HD13	1:B:524:LEU:HA	1.83	0.41
1:A:23:LYS:HD3	1:A:23:LYS:HA	1.82	0.40
1:A:356:ARG:O	1:A:360:LEU:HG	2.21	0.40
1:B:137:PHE:HB2	1:B:455:PHE:O	2.21	0.40
1:B:360:LEU:HD22	1:B:379:VAL:HG21	2.03	0.40
1:B:424:ARG:NH1	1:B:424:ARG:CG	2.82	0.40
1:A:22:LEU:O	1:A:28:PRO:HA	2.21	0.40
1:A:66:GLN:O	1:A:90[B]:ARG:HD3	2.21	0.40
1:A:86:TRP:CH2	3:A:1543:X13:H191	2.56	0.40
1:B:200:PHE:HB3	1:B:226:VAL:HB	2.03	0.40
1:A:210:GLY:HA3	1:A:232:PRO:HD3	2.03	0.40
1:B:107:ARG:HE	1:B:107:ARG:HB2	1.73	0.40
1:B:428:TYR:HB3	1:B:500:TRP:CZ2	2.57	0.40
1:B:251:LEU:O	1:B:255:VAL:HG22	2.22	0.40
1:B:271:ALA:O	1:B:275:THR:HG23	2.22	0.40
1:B:525:ARG:HH11	1:B:525:ARG:CG	2.35	0.40

There are no symmetry-related clashes.

4.3 Torsion angles [i](#)

4.3.1 Protein backbone [i](#)

In the following table, the Percentiles column shows the percent Ramachandran outliers of the chain as a percentile score with respect to all X-ray entries followed by that with respect to entries of similar resolution.

The Analysed column shows the number of residues for which the backbone conformation was analysed, and the total number of residues.

Mol	Chain	Analysed	Favoured	Allowed	Outliers	Percentiles
1	A	534/543 (98%)	509 (95%)	25 (5%)	0	100 100
1	B	529/543 (97%)	501 (95%)	22 (4%)	6 (1%)	14 30

Continued on next page...

Continued from previous page...

Mol	Chain	Analysed	Favoured	Allowed	Outliers	Percentiles
All	All	1063/1086 (98%)	1010 (95%)	47 (4%)	6 (1%)	25 47

All (6) Ramachandran outliers are listed below:

Mol	Chain	Res	Type
1	B	497	SER
1	B	542	ALA
1	B	494	ASP
1	B	496	LYS
1	B	322	GLN
1	B	121	GLY

4.3.2 Protein sidechains [i](#)

In the following table, the Percentiles column shows the percent sidechain outliers of the chain as a percentile score with respect to all X-ray entries followed by that with respect to entries of similar resolution.

The Analysed column shows the number of residues for which the sidechain conformation was analysed, and the total number of residues.

Mol	Chain	Analysed	Rotameric	Outliers	Percentiles
1	A	439/443 (99%)	419 (95%)	20 (5%)	27 51
1	B	438/443 (99%)	416 (95%)	22 (5%)	24 47
All	All	877/886 (99%)	835 (95%)	42 (5%)	25 49

All (42) residues with a non-rotameric sidechain are listed below:

Mol	Chain	Res	Type
1	A	7	GLN
1	A	13	ARG
1	A	54	ARG
1	A	165	ARG
1	A	195	MET
1	A	200	PHE
1	A	216	LEU
1	A	249	THR
1	A	291	GLN
1	A	295	PHE
1	A	322	GLN
1	A	327	LEU

Continued on next page...

Continued from previous page...

Mol	Chain	Res	Type
1	A	369	GLN
1	A	413	GLN
1	A	418	LEU
1	A	516	LYS
1	A	524	LEU
1	A	525	ARG
1	A	536	LEU
1	A	540	LEU
1	B	11	ARG
1	B	61	ASP
1	B	81	GLU
1	B	110	SER
1	B	136	ARG
1	B	200	PHE
1	B	246	ARG
1	B	249	THR
1	B	265	ASN
1	B	281	LEU
1	B	291	GLN
1	B	295	PHE
1	B	296	ARG
1	B	313	GLU
1	B	413	GLN
1	B	424	ARG
1	B	467	THR
1	B	496	LYS
1	B	497	SER
1	B	524	LEU
1	B	525	ARG
1	B	536	LEU

Sometimes sidechains can be flipped to improve hydrogen bonding and reduce clashes. All (8) such sidechains are listed below:

Mol	Chain	Res	Type
1	A	223	HIS
1	A	291	GLN
1	A	369	GLN
1	A	474	GLN
1	A	509	GLN
1	B	223	HIS
1	B	228	GLN
1	B	291	GLN

4.3.3 RNA [i](#)

There are no RNA molecules in this entry.

4.4 Non-standard residues in protein, DNA, RNA chains [i](#)

Mogul was not executed - this section is therefore empty.

4.5 Carbohydrates [i](#)

Mogul was not executed - this section is therefore empty.

4.6 Ligand geometry [i](#)

Mogul was not executed - this section is therefore empty.

4.7 Other polymers [i](#)

Mogul was not executed - this section is therefore empty.

4.8 Polymer linkage issues [i](#)

There are no chain breaks in this entry.

5 Fit of model and data

5.1 Protein, DNA and RNA chains

EDS failed to run properly - this section is therefore empty.

5.2 Non-standard residues in protein, DNA, RNA chains

EDS failed to run properly - this section is therefore empty.

5.3 Carbohydrates

EDS failed to run properly - this section is therefore empty.

5.4 Ligands

EDS failed to run properly - this section is therefore empty.

5.5 Other polymers

EDS failed to run properly - this section is therefore empty.